



Full wwPDB X-ray Structure Validation Report ⓘ

Mar 8, 2018 – 06:02 pm GMT

PDB ID : 4N5F
Title : Crystal Structure of a Putative acyl-CoA dehydrogenase with bound FADH2 from Burkholderia cenocepacia J2315
Authors : Seattle Structural Genomics Center for Infectious Disease; Seattle Structural Genomics Center for Infectious Disease (SSGCID)
Deposited on : 2013-10-09
Resolution : 2.20 Å(reported)

This is a Full wwPDB X-ray Structure Validation Report for a publicly released PDB entry.

We welcome your comments at validation@mail.wwpdb.org

A user guide is available at

<https://www.wwpdb.org/validation/2017/XrayValidationReportHelp>

with specific help available everywhere you see the ⓘ symbol.

The following versions of software and data (see [references ⓘ](#)) were used in the production of this report:

MolProbity : 4.02b-467
Mogul : 1.7.3 (157068), CSD as539be (2018)
Xtrriage (Phenix) : 1.13
EDS : trunk30967
Percentile statistics : 20171227.v01 (using entries in the PDB archive December 27th 2017)
Refmac : 5.8.0158
CCP4 : 7.0 (Gargrove)
Ideal geometry (proteins) : Engh & Huber (2001)
Ideal geometry (DNA, RNA) : Parkinson et al. (1996)
Validation Pipeline (wwPDB-VP) : trunk30967

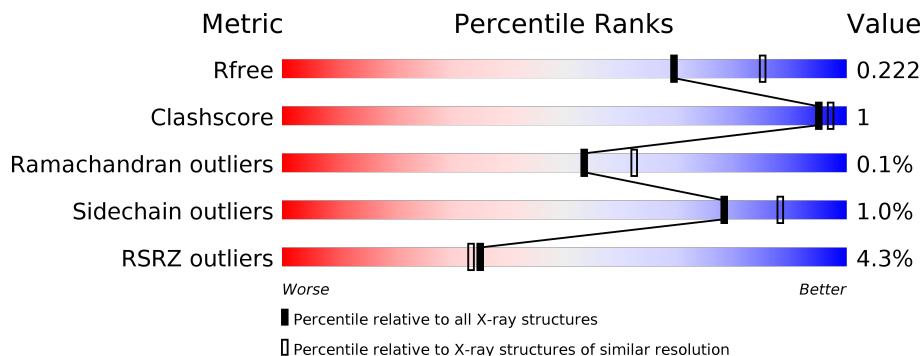
1 Overall quality at a glance

The following experimental techniques were used to determine the structure:

X-RAY DIFFRACTION

The reported resolution of this entry is 2.20 Å.

Percentile scores (ranging between 0-100) for global validation metrics of the entry are shown in the following graphic. The table shows the number of entries on which the scores are based.



Metric	Whole archive (#Entries)	Similar resolution (#Entries, resolution range(Å))
R_{free}	111664	4343 (2.20-2.20)
Clashscore	122126	5027 (2.20-2.20)
Ramachandran outliers	120053	4952 (2.20-2.20)
Sidechain outliers	120020	4953 (2.20-2.20)
RSRZ outliers	108989	4245 (2.20-2.20)

The table below summarises the geometric issues observed across the polymeric chains and their fit to the electron density. The red, orange, yellow and green segments on the lower bar indicate the fraction of residues that contain outliers for ≥ 3 , 2, 1 and 0 types of geometric quality criteria. A grey segment represents the fraction of residues that are not modelled. The numeric value for each fraction is indicated below the corresponding segment, with a dot representing fractions $\leq 5\%$. The upper red bar (where present) indicates the fraction of residues that have poor fit to the electron density. The numeric value is given above the bar.

Mol	Chain	Length	Quality of chain
1	A	385	 3% 96%
1	B	385	 5% 90% 6%

The following table lists non-polymeric compounds, carbohydrate monomers and non-standard residues in protein, DNA, RNA chains that are outliers for geometric or electron-density-fit criteria:

Mol	Type	Chain	Res	Chirality	Geometry	Clashes	Electron density
3	UNX	A	408	-	-	-	X
3	UNX	B	407	-	-	-	X

2 Entry composition

There are 4 unique types of molecules in this entry. The entry contains 5741 atoms, of which 0 are hydrogens and 0 are deuteriums.

In the tables below, the ZeroOcc column contains the number of atoms modelled with zero occupancy, the AltConf column contains the number of residues with at least one atom in alternate conformation and the Trace column contains the number of residues modelled with at most 2 atoms.

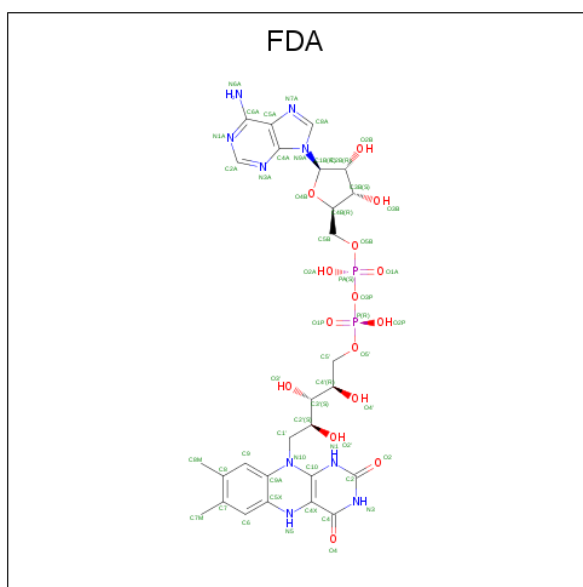
- Molecule 1 is a protein called Putative acyl-CoA dehydrogenase.

Mol	Chain	Residues	Atoms					ZeroOcc	AltConf	Trace
			Total	C	N	O	S			
1	A	378	2789	1742	497	531	19	0	0	0
1	B	369	2679	1678	477	504	20	0	1	0

There are 16 discrepancies between the modelled and reference sequences:

Chain	Residue	Modelled	Actual	Comment	Reference
A	-7	MET	-	INITIATING METHIONINE	UNP B4EGC8
A	-6	ALA	-	EXPRESSION TAG	UNP B4EGC8
A	-5	HIS	-	EXPRESSION TAG	UNP B4EGC8
A	-4	HIS	-	EXPRESSION TAG	UNP B4EGC8
A	-3	HIS	-	EXPRESSION TAG	UNP B4EGC8
A	-2	HIS	-	EXPRESSION TAG	UNP B4EGC8
A	-1	HIS	-	EXPRESSION TAG	UNP B4EGC8
A	0	HIS	-	EXPRESSION TAG	UNP B4EGC8
B	-7	MET	-	INITIATING METHIONINE	UNP B4EGC8
B	-6	ALA	-	EXPRESSION TAG	UNP B4EGC8
B	-5	HIS	-	EXPRESSION TAG	UNP B4EGC8
B	-4	HIS	-	EXPRESSION TAG	UNP B4EGC8
B	-3	HIS	-	EXPRESSION TAG	UNP B4EGC8
B	-2	HIS	-	EXPRESSION TAG	UNP B4EGC8
B	-1	HIS	-	EXPRESSION TAG	UNP B4EGC8
B	0	HIS	-	EXPRESSION TAG	UNP B4EGC8

- Molecule 2 is DIHYDROFLAVINE-ADENINE DINUCLEOTIDE (three-letter code: FDA) (formula: C₂₇H₃₅N₉O₁₅P₂).



Mol	Chain	Residues	Atoms				ZeroOcc	AltConf	
2	A	1	Total	C	N	O	P	0	0
			53	27	9	15	2		
2	B	1	Total	C	N	O	P	0	0
			53	27	9	15	2		

- Molecule 3 is UNKNOWN ATOM OR ION (three-letter code: UNX) (formula: X).

Mol	Chain	Residues	Atoms		ZeroOcc	AltConf
3	B	10	Total	X	0	0
			10	10		
3	A	11	Total	X	0	0
			11	11		

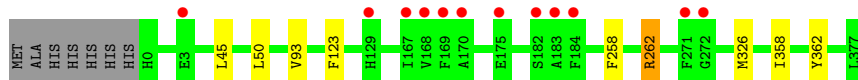
- Molecule 4 is water.

Mol	Chain	Residues	Atoms		ZeroOcc	AltConf
4	A	86	Total	O	0	0
			86	86		
4	B	60	Total	O	0	0
			60	60		

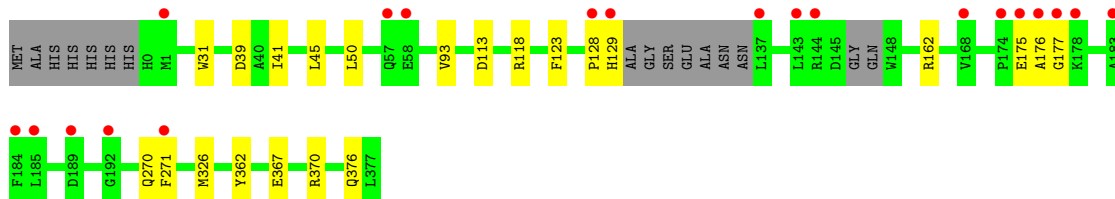
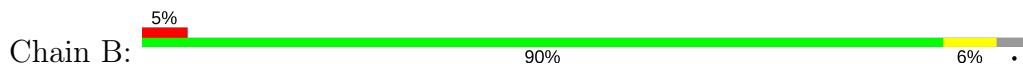
3 Residue-property plots [i](#)

These plots are drawn for all protein, RNA and DNA chains in the entry. The first graphic for a chain summarises the proportions of the various outlier classes displayed in the second graphic. The second graphic shows the sequence view annotated by issues in geometry and electron density. Residues are color-coded according to the number of geometric quality criteria for which they contain at least one outlier: green = 0, yellow = 1, orange = 2 and red = 3 or more. A red dot above a residue indicates a poor fit to the electron density ($RSRZ > 2$). Stretches of 2 or more consecutive residues without any outlier are shown as a green connector. Residues present in the sample, but not in the model, are shown in grey.

- Molecule 1: Putative acyl-CoA dehydrogenase



- Molecule 1: Putative acyl-CoA dehydrogenase



4 Data and refinement statistics

Property	Value	Source
Space group	P 43 21 2	Depositor
Cell constants a, b, c, α , β , γ	97.47Å 97.47Å 168.95Å 90.00° 90.00° 90.00°	Depositor
Resolution (Å)	19.77 – 2.20 19.77 – 2.20	Depositor EDS
% Data completeness (in resolution range)	99.5 (19.77-2.20) 99.7 (19.77-2.20)	Depositor EDS
R_{merge}	0.06	Depositor
R_{sym}	(Not available)	Depositor
$\langle I/\sigma(I) \rangle$ ¹	2.25 (at 2.19Å)	Xtrriage
Refinement program	REFMAC	Depositor
R, R_{free}	0.181 , 0.224 0.187 , 0.222	Depositor DCC
R_{free} test set	2111 reflections (5.04%)	wwPDB-VP
Wilson B-factor (Å ²)	39.8	Xtrriage
Anisotropy	0.005	Xtrriage
Bulk solvent k_{sol} (e/Å ³), B_{sol} (Å ²)	0.36 , 47.7	EDS
L-test for twinning ²	$\langle L \rangle = 0.49$, $\langle L^2 \rangle = 0.32$	Xtrriage
Estimated twinning fraction	No twinning to report.	Xtrriage
F_o, F_c correlation	0.96	EDS
Total number of atoms	5741	wwPDB-VP
Average B, all atoms (Å ²)	49.0	wwPDB-VP

Xtrriage's analysis on translational NCS is as follows: *The largest off-origin peak in the Patterson function is 19.53% of the height of the origin peak. No significant pseudotranslation is detected.*

¹Intensities estimated from amplitudes.

²Theoretical values of $\langle |L| \rangle$, $\langle L^2 \rangle$ for acentric reflections are 0.5, 0.333 respectively for untwinned datasets, and 0.375, 0.2 for perfectly twinned datasets.

5 Model quality [i](#)

5.1 Standard geometry [i](#)

Bond lengths and bond angles in the following residue types are not validated in this section: FDA, UNX

The Z score for a bond length (or angle) is the number of standard deviations the observed value is removed from the expected value. A bond length (or angle) with $|Z| > 5$ is considered an outlier worth inspection. RMSZ is the root-mean-square of all Z scores of the bond lengths (or angles).

Mol	Chain	Bond lengths		Bond angles	
		RMSZ	# $ Z > 5$	RMSZ	# $ Z > 5$
1	A	0.61	0/2838	0.74	1/3850 (0.0%)
1	B	0.58	1/2726 (0.0%)	0.70	1/3700 (0.0%)
All	All	0.59	1/5564 (0.0%)	0.72	2/7550 (0.0%)

All (1) bond length outliers are listed below:

Mol	Chain	Res	Type	Atoms	Z	Observed(Å)	Ideal(Å)
1	B	367	GLU	CD-OE2	5.89	1.32	1.25

All (2) bond angle outliers are listed below:

Mol	Chain	Res	Type	Atoms	Z	Observed(°)	Ideal(°)
1	B	370	ARG	NE-CZ-NH1	5.31	122.96	120.30
1	A	262	ARG	NE-CZ-NH1	5.02	122.81	120.30

There are no chirality outliers.

There are no planarity outliers.

5.2 Too-close contacts [i](#)

In the following table, the Non-H and H(model) columns list the number of non-hydrogen atoms and hydrogen atoms in the chain respectively. The H(added) column lists the number of hydrogen atoms added and optimized by MolProbity. The Clashes column lists the number of clashes within the asymmetric unit, whereas Symm-Clashes lists symmetry related clashes.

Mol	Chain	Non-H	H(model)	H(added)	Clashes	Symm-Clashes
1	A	2789	0	2698	5	0
1	B	2679	0	2541	9	0
2	A	53	0	33	1	0

Continued on next page...

Continued from previous page...

Mol	Chain	Non-H	H(model)	H(added)	Clashes	Symm-Clashes
2	B	53	0	33	0	0
3	A	11	0	0	0	0
3	B	10	0	0	0	0
4	A	86	0	0	0	0
4	B	60	0	0	0	0
All	All	5741	0	5305	14	0

The all-atom clashscore is defined as the number of clashes found per 1000 atoms (including hydrogen atoms). The all-atom clashscore for this structure is 1.

All (14) close contacts within the same asymmetric unit are listed below, sorted by their clash magnitude.

Atom-1	Atom-2	Interatomic distance (Å)	Clash overlap (Å)
1:A:45:LEU:HD23	1:A:50:LEU:HD12	1.78	0.66
1:B:45:LEU:HD23	1:B:50:LEU:HD12	1.80	0.63
1:A:93:VAL:HB	1:A:123:PHE:CD2	2.43	0.54
1:A:358:ILE:HD11	2:A:401:FDA:HM83	1.92	0.50
1:A:45:LEU:HD23	1:A:50:LEU:CD1	2.42	0.49
1:B:93:VAL:HB	1:B:123:PHE:CD1	2.47	0.49
1:B:45:LEU:HD23	1:B:50:LEU:CD1	2.42	0.49
1:A:258:PHE:CE2	1:A:262:ARG:HD2	2.49	0.48
1:B:39:ASP:OD1	1:B:162:ARG:NH1	2.47	0.47
1:B:113:ASP:OD1	1:B:118[A]:ARG:NH1	2.49	0.46
1:B:128:PRO:O	1:B:129:HIS:HB3	2.17	0.45
1:B:270:GLN:HG3	1:B:271:PHE:CD2	2.54	0.43
1:B:31:TRP:CZ2	1:B:41:ILE:HG13	2.55	0.41
1:B:175:GLU:HA	1:B:176:ALA:HA	1.74	0.41

There are no symmetry-related clashes.

5.3 Torsion angles [i](#)

5.3.1 Protein backbone [i](#)

In the following table, the Percentiles column shows the percent Ramachandran outliers of the chain as a percentile score with respect to all X-ray entries followed by that with respect to entries of similar resolution.

The Analysed column shows the number of residues for which the backbone conformation was analysed, and the total number of residues.

Mol	Chain	Analysed	Favoured	Allowed	Outliers	Percentiles	
1	A	376/385 (98%)	367 (98%)	9 (2%)	0	100	100
1	B	364/385 (94%)	355 (98%)	8 (2%)	1 (0%)	43	48
All	All	740/770 (96%)	722 (98%)	17 (2%)	1 (0%)	53	62

All (1) Ramachandran outliers are listed below:

Mol	Chain	Res	Type
1	B	177	GLY

5.3.2 Protein sidechains [i](#)

In the following table, the Percentiles column shows the percent sidechain outliers of the chain as a percentile score with respect to all X-ray entries followed by that with respect to entries of similar resolution.

The Analysed column shows the number of residues for which the sidechain conformation was analysed, and the total number of residues.

Mol	Chain	Analysed	Rotameric	Outliers	Percentiles	
1	A	268/289 (93%)	266 (99%)	2 (1%)	85	93
1	B	247/289 (86%)	244 (99%)	3 (1%)	74	85
All	All	515/578 (89%)	510 (99%)	5 (1%)	78	88

All (5) residues with a non-rotameric sidechain are listed below:

Mol	Chain	Res	Type
1	A	326	MET
1	A	362	TYR
1	B	326	MET
1	B	362	TYR
1	B	376	GLN

Some sidechains can be flipped to improve hydrogen bonding and reduce clashes. All (1) such sidechains are listed below:

Mol	Chain	Res	Type
1	A	360	GLN

5.3.3 RNA [i](#)

There are no RNA molecules in this entry.

5.4 Non-standard residues in protein, DNA, RNA chains [i](#)

There are no non-standard protein/DNA/RNA residues in this entry.

5.5 Carbohydrates [i](#)

There are no carbohydrates in this entry.

5.6 Ligand geometry [i](#)

Of 23 ligands modelled in this entry, 21 are unknown - leaving 2 for Mogul analysis.

In the following table, the Counts columns list the number of bonds (or angles) for which Mogul statistics could be retrieved, the number of bonds (or angles) that are observed in the model and the number of bonds (or angles) that are defined in the Chemical Component Dictionary. The Link column lists molecule types, if any, to which the group is linked. The Z score for a bond length (or angle) is the number of standard deviations the observed value is removed from the expected value. A bond length (or angle) with $|Z| > 2$ is considered an outlier worth inspection. RMSZ is the root-mean-square of all Z scores of the bond lengths (or angles).

Mol	Type	Chain	Res	Link	Bond lengths			Bond angles		
					Counts	RMSZ	# Z > 2	Counts	RMSZ	# Z > 2
2	FDA	A	401	-	51,58,58	1.56	6 (11%)	57,89,89	2.42	15 (26%)
2	FDA	B	401	-	51,58,58	1.53	7 (13%)	57,89,89	2.28	13 (22%)

In the following table, the Chirals column lists the number of chiral outliers, the number of chiral centers analysed, the number of these observed in the model and the number defined in the Chemical Component Dictionary. Similar counts are reported in the Torsion and Rings columns. '-' means no outliers of that kind were identified.

Mol	Type	Chain	Res	Link	Chirals	Torsions	Rings
2	FDA	A	401	-	-	0/28/50/50	0/6/6/6
2	FDA	B	401	-	-	0/28/50/50	0/6/6/6

All (13) bond length outliers are listed below:

Mol	Chain	Res	Type	Atoms	Z	Observed(Å)	Ideal(Å)
2	B	401	FDA	C6-C5X	-2.09	1.38	1.41

Continued on next page...

Continued from previous page...

Mol	Chain	Res	Type	Atoms	Z	Observed(Å)	Ideal(Å)
2	A	401	FDA	C2A-N3A	2.17	1.35	1.32
2	B	401	FDA	O4B-C1B	2.19	1.44	1.41
2	A	401	FDA	C10-N1	2.35	1.36	1.33
2	B	401	FDA	C10-N1	2.97	1.37	1.33
2	A	401	FDA	C5A-C4A	3.02	1.47	1.40
2	B	401	FDA	C5A-C4A	3.11	1.47	1.40
2	A	401	FDA	C4X-C10	4.62	1.48	1.41
2	B	401	FDA	C4-C4X	4.67	1.49	1.41
2	B	401	FDA	C9A-N10	4.75	1.44	1.38
2	B	401	FDA	C4X-C10	4.77	1.48	1.41
2	A	401	FDA	C9A-N10	4.90	1.44	1.38
2	A	401	FDA	C4-C4X	5.39	1.50	1.41

All (28) bond angle outliers are listed below:

Mol	Chain	Res	Type	Atoms	Z	Observed(°)	Ideal(°)
2	A	401	FDA	N3A-C2A-N1A	-7.83	122.16	128.86
2	B	401	FDA	N3A-C2A-N1A	-6.41	123.37	128.86
2	B	401	FDA	C4X-C10-N10	-6.23	114.60	120.40
2	A	401	FDA	C4-C4X-C10	-5.80	115.62	119.95
2	A	401	FDA	C1'-N10-C9A	-4.48	114.33	118.31
2	A	401	FDA	C4X-C10-N10	-4.35	116.36	120.40
2	B	401	FDA	C9A-N10-C10	-4.31	116.03	121.77
2	A	401	FDA	C9A-N10-C10	-4.06	116.36	121.77
2	B	401	FDA	C4-C4X-C10	-3.85	117.08	119.95
2	B	401	FDA	C4X-C4-N3	-3.26	118.83	123.47
2	B	401	FDA	P-O3P-PA	-2.98	122.61	132.63
2	A	401	FDA	C4X-C4-N3	-2.96	119.26	123.47
2	A	401	FDA	P-O3P-PA	-2.71	123.53	132.63
2	B	401	FDA	C1'-N10-C9A	-2.68	115.93	118.31
2	A	401	FDA	C4A-C5A-N7A	-2.67	106.83	109.41
2	B	401	FDA	C1B-N9A-C4A	-2.67	122.03	126.64
2	A	401	FDA	O3B-C3B-C2B	-2.59	103.53	111.83
2	B	401	FDA	C4B-O4B-C1B	-2.19	107.55	109.83
2	A	401	FDA	C1B-N9A-C4A	-2.17	122.89	126.64
2	A	401	FDA	C2A-N1A-C6A	2.04	122.22	118.75
2	B	401	FDA	C2A-N1A-C6A	2.04	122.22	118.75
2	A	401	FDA	C2B-C3B-C4B	2.33	107.09	102.62
2	B	401	FDA	N6A-C6A-N1A	2.64	124.06	118.57
2	A	401	FDA	C4X-N5-C5X	3.01	119.91	116.76
2	B	401	FDA	C4-C4X-N5	4.57	123.84	118.70
2	A	401	FDA	C4-C4X-N5	5.78	125.19	118.70

Continued on next page...

Continued from previous page...

Mol	Chain	Res	Type	Atoms	Z	Observed(°)	Ideal(°)
2	A	401	FDA	C4-N3-C2	8.49	122.37	115.14
2	B	401	FDA	C4-N3-C2	8.49	122.37	115.14

There are no chirality outliers.

There are no torsion outliers.

There are no ring outliers.

1 monomer is involved in 1 short contact:

Mol	Chain	Res	Type	Clashes	Symm-Clashes
2	A	401	FDA	1	0

5.7 Other polymers [i](#)

There are no such residues in this entry.

5.8 Polymer linkage issues [i](#)

There are no chain breaks in this entry.

6 Fit of model and data

6.1 Protein, DNA and RNA chains

In the following table, the column labelled ‘#RSRZ > 2’ contains the number (and percentage) of RSRZ outliers, followed by percent RSRZ outliers for the chain as percentile scores relative to all X-ray entries and entries of similar resolution. The OWAB column contains the minimum, median, 95th percentile and maximum values of the occupancy-weighted average B-factor per residue. The column labelled ‘Q < 0.9’ lists the number of (and percentage) of residues with an average occupancy less than 0.9.

Mol	Chain	Analysed	<RSRZ>	#RSRZ>2	OWAB(Å ²)	Q<0.9
1	A	378/385 (98%)	-0.17	12 (3%) 47 45	29, 45, 65, 73	0
1	B	369/385 (95%)	0.02	20 (5%) 26 24	31, 52, 85, 115	0
All	All	747/770 (97%)	-0.07	32 (4%) 35 33	29, 48, 77, 115	0

All (32) RSRZ outliers are listed below:

Mol	Chain	Res	Type	RSRZ
1	B	271	PHE	5.5
1	A	168	VAL	5.0
1	B	176	ALA	4.9
1	B	129	HIS	4.0
1	A	271	PHE	3.9
1	B	168	VAL	3.7
1	B	174	PRO	3.6
1	B	128	PRO	3.2
1	B	144	ARG	3.1
1	B	143	LEU	2.9
1	A	183	ALA	2.9
1	B	189	ASP	2.9
1	B	58	GLU	2.8
1	A	184	PHE	2.7
1	B	178	LYS	2.7
1	B	184	PHE	2.6
1	B	185	LEU	2.6
1	B	1	MET	2.6
1	B	183	ALA	2.6
1	B	137	LEU	2.5
1	A	175	GLU	2.3
1	A	182	SER	2.3
1	A	3	GLU	2.2
1	A	167	ILE	2.2

Continued on next page...

Continued from previous page...

Mol	Chain	Res	Type	RSRZ
1	B	57	GLN	2.2
1	A	170	ALA	2.2
1	B	192	GLY	2.2
1	A	169	PHE	2.1
1	B	177	GLY	2.1
1	A	129	HIS	2.1
1	B	175	GLU	2.0
1	A	272	GLY	2.0

6.2 Non-standard residues in protein, DNA, RNA chains [i](#)

There are no non-standard protein/DNA/RNA residues in this entry.

6.3 Carbohydrates [i](#)

There are no carbohydrates in this entry.

6.4 Ligands [i](#)

In the following table, the Atoms column lists the number of modelled atoms in the group and the number defined in the chemical component dictionary. The B-factors column lists the minimum, median, 95th percentile and maximum values of B factors of atoms in the group. The column labelled 'Q< 0.9' lists the number of atoms with occupancy less than 0.9.

Mol	Type	Chain	Res	Atoms	RSCC	RSR	B-factors(Å ²)	Q<0.9
3	UNX	B	407	1/1	0.75	0.96	62,62,62,62	0
2	FDA	B	401	53/53	0.77	0.26	42,65,73,76	53
3	UNX	A	407	1/1	0.79	0.39	46,46,46,46	0
3	UNX	A	408	1/1	0.79	0.70	65,65,65,65	0
3	UNX	B	411	1/1	0.79	0.12	53,53,53,53	0
3	UNX	B	410	1/1	0.81	0.14	49,49,49,49	0
3	UNX	B	409	1/1	0.83	0.69	66,66,66,66	0
3	UNX	B	406	1/1	0.86	0.26	24,24,24,24	0
2	FDA	A	401	53/53	0.90	0.17	35,45,49,50	53
3	UNX	A	412	1/1	0.90	0.37	45,45,45,45	0
3	UNX	A	410	1/1	0.91	0.42	51,51,51,51	0
3	UNX	A	409	1/1	0.92	0.32	51,51,51,51	0
3	UNX	B	408	1/1	0.92	0.13	44,44,44,44	0
3	UNX	A	402	1/1	0.93	0.22	26,26,26,26	0
3	UNX	A	403	1/1	0.93	0.09	51,51,51,51	0

Continued on next page...

Continued from previous page...

Mol	Type	Chain	Res	Atoms	RSCC	RSR	B-factors(\AA^2)	Q<0.9
3	UNX	B	404	1/1	0.94	0.13	49,49,49,49	0
3	UNX	A	405	1/1	0.95	0.07	60,60,60,60	0
3	UNX	A	406	1/1	0.95	0.10	44,44,44,44	0
3	UNX	B	403	1/1	0.95	0.19	41,41,41,41	0
3	UNX	B	405	1/1	0.96	0.18	53,53,53,53	0
3	UNX	A	411	1/1	0.96	0.44	47,47,47,47	0
3	UNX	A	404	1/1	0.96	0.10	53,53,53,53	0
3	UNX	B	402	1/1	0.98	0.24	36,36,36,36	0

6.5 Other polymers [i](#)

There are no such residues in this entry.