



# wwPDB X-ray Structure Validation Summary Report ⓘ

Oct 10, 2023 – 07:00 PM EDT

PDB ID : 5N6Y  
Title : Azotobacter vinelandii vanadium nitrogenase  
Authors : Sippel, D.; Einsle, O.  
Deposited on : 2017-02-16  
Resolution : 1.35 Å(reported)

This is a wwPDB X-ray Structure Validation Summary Report for a publicly released PDB entry.

We welcome your comments at [validation@mail.wwpdb.org](mailto:validation@mail.wwpdb.org)

A user guide is available at

<https://www.wwpdb.org/validation/2017/XrayValidationReportHelp>

with specific help available everywhere you see the ⓘ symbol.

The types of validation reports are described at

<http://www.wwpdb.org/validation/2017/FAQs#types>.

---

The following versions of software and data (see [references ⓘ](#)) were used in the production of this report:

MolProbity : 4.02b-467  
Mogul : 1.8.5 (274361), CSD as541be (2020)  
Xtrriage (Phenix) : 1.13  
EDS : 2.35.1  
buster-report : 1.1.7 (2018)  
Percentile statistics : 20191225.v01 (using entries in the PDB archive December 25th 2019)  
Refmac : 5.8.0158  
CCP4 : 7.0.044 (Gargrove)  
Ideal geometry (proteins) : Engh & Huber (2001)  
Ideal geometry (DNA, RNA) : Parkinson et al. (1996)  
Validation Pipeline (wwPDB-VP) : 2.35.1

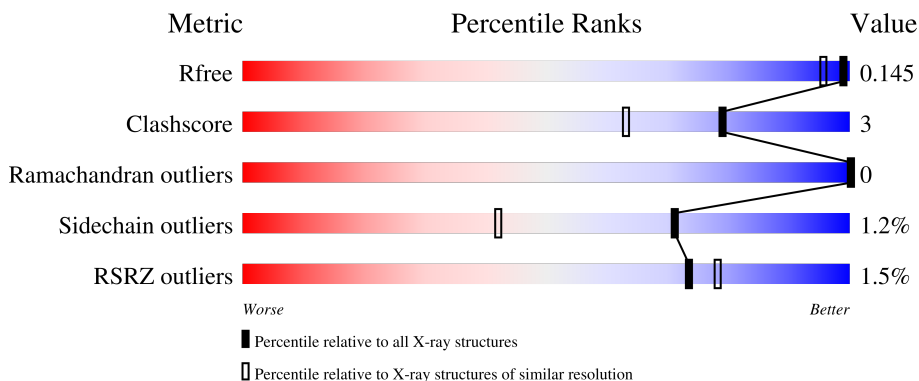
# 1 Overall quality at a glance

The following experimental techniques were used to determine the structure:

*X-RAY DIFFRACTION*

The reported resolution of this entry is 1.35 Å.

Percentile scores (ranging between 0-100) for global validation metrics of the entry are shown in the following graphic. The table shows the number of entries on which the scores are based.




Metric	Whole archive (#Entries)	Similar resolution (#Entries, resolution range(Å))
$R_{free}$	130704	1509 (1.38-1.34)
Clashscore	141614	1551 (1.38-1.34)
Ramachandran outliers	138981	1530 (1.38-1.34)
Sidechain outliers	138945	1530 (1.38-1.34)
RSRZ outliers	127900	1487 (1.38-1.34)

The table below summarises the geometric issues observed across the polymeric chains and their fit to the electron density. The red, orange, yellow and green segments of the lower bar indicate the fraction of residues that contain outliers for  $\geq 3$ , 2, 1 and 0 types of geometric quality criteria respectively. A grey segment represents the fraction of residues that are not modelled. The numeric value for each fraction is indicated below the corresponding segment, with a dot representing fractions  $\leq 5\%$ . The upper red bar (where present) indicates the fraction of residues that have poor fit to the electron density. The numeric value is given above the bar.

Mol	Chain	Length	Quality of chain
1	A	474	 3% 87% 11%
1	D	474	 2% 85% 14%
2	B	475	 0% 85% 11%
2	E	475	 0% 85% 11%
3	C	113	 2% 88% 11%

Continued on next page...

*Continued from previous page...*

Mol	Chain	Length	Quality of chain
3	F	113	 <p>A horizontal bar chart representing the quality of chain. The bar is divided into three segments: a small red segment on the left labeled '2%', a large green segment in the middle labeled '76%', and a yellow/orange segment on the right labeled '19%'. The bar ends with two small black dots.</p>

## 2 Entry composition [i](#)

There are 9 unique types of molecules in this entry. The entry contains 19130 atoms, of which 0 are hydrogens and 0 are deuteriums.

In the tables below, the ZeroOcc column contains the number of atoms modelled with zero occupancy, the AltConf column contains the number of residues with at least one atom in alternate conformation and the Trace column contains the number of residues modelled with at most 2 atoms.

- Molecule 1 is a protein called Nitrogenase vanadium-iron protein alpha chain.

Mol	Chain	Residues	Atoms					ZeroOcc	AltConf	Trace
			Total	C	N	O	S			
1	A	473	3804	2427	650	701	26	0	3	0
1	D	473	3807	2428	651	702	26	0	3	0

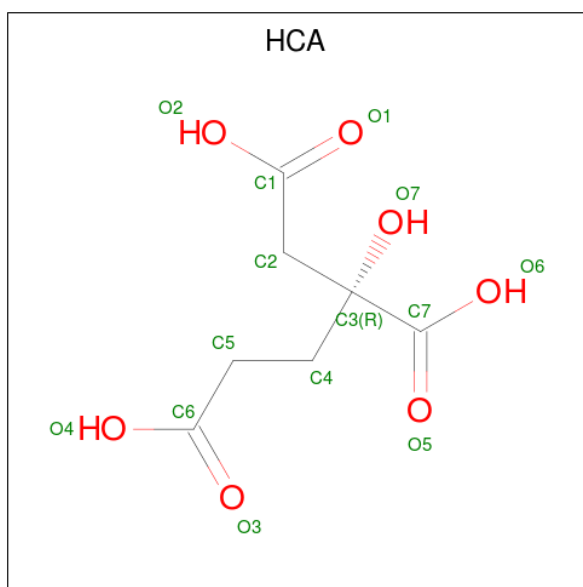
- Molecule 2 is a protein called Nitrogenase vanadium-iron protein beta chain.

Mol	Chain	Residues	Atoms					ZeroOcc	AltConf	Trace
			Total	C	N	O	S			
2	E	464	3643	2315	625	682	21	0	2	0
2	B	464	3643	2315	625	682	21	0	2	0

- Molecule 3 is a protein called Nitrogenase vanadium-iron protein delta chain.

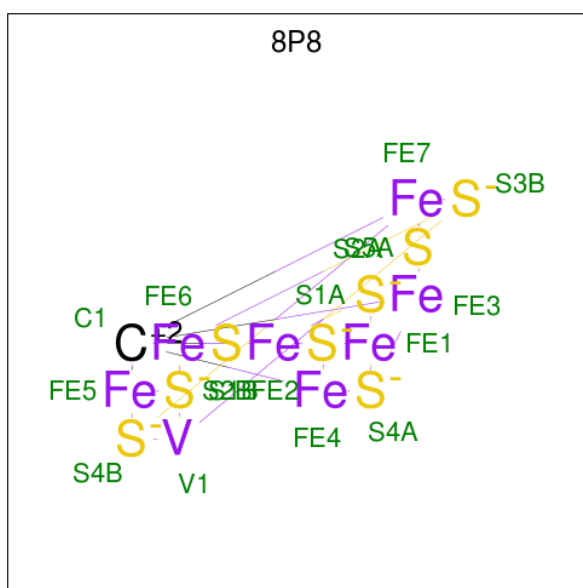
Mol	Chain	Residues	Atoms					ZeroOcc	AltConf	Trace
			Total	C	N	O	S			
3	C	112	936	588	168	178	2	0	0	0
3	F	111	944	592	169	181	2	0	2	0

- Molecule 4 is 3-HYDROXY-3-CARBOXY-ADIPIC ACID (three-letter code: HCA) (formula: C<sub>7</sub>H<sub>10</sub>O<sub>7</sub>).



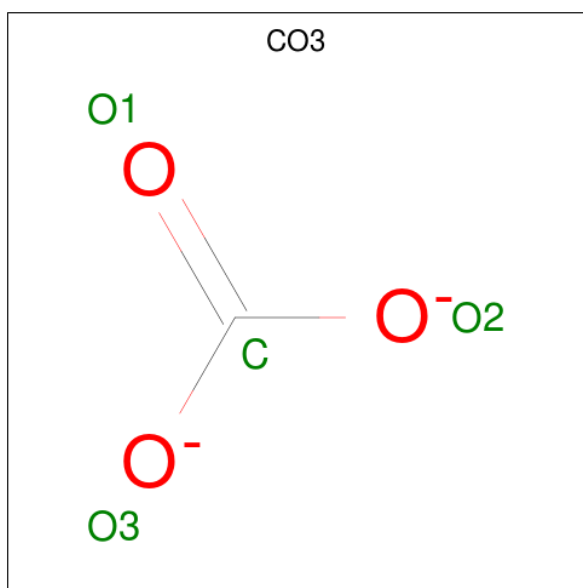
Mol	Chain	Residues	Atoms				ZeroOcc	AltConf
4	A	1	Total	C	O		0	0
			14	7	7			
4	D	1	Total	C	O		0	0
			14	7	7			

- Molecule 5 is C Fe7 S8 V (three-letter code: 8P8) (formula: CFe<sub>7</sub>S<sub>8</sub>V).



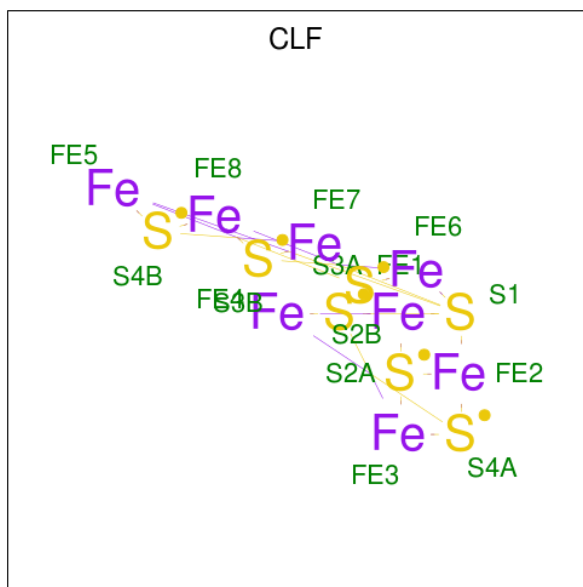
Mol	Chain	Residues	Atoms					ZeroOcc	AltConf
5	A	1	Total	C	Fe	S	V	0	0
			17	1	7	8	1		
5	D	1	Total	C	Fe	S	V	0	0
			17	1	7	8	1		

- Molecule 6 is CARBONATE ION (three-letter code: CO3) (formula: CO<sub>3</sub>).



Mol	Chain	Residues	Atoms	ZeroOcc	AltConf		
6	A	1	Total	C	O	0	0
			4	1	3		
6	D	1	Total	C	O	0	0
			4	1	3		

- Molecule 7 is FE(8)-S(7) CLUSTER (three-letter code: CLF) (formula: Fe<sub>8</sub>S<sub>7</sub>).



Mol	Chain	Residues	Atoms	ZeroOcc	AltConf		
7	A	1	Total	Fe	S	0	0
			15	8	7		

*Continued on next page...*

*Continued from previous page...*

Mol	Chain	Residues	Atoms			ZeroOcc	AltConf
7	E	1	Total	Fe	S	0	0
			15	8	7		

- Molecule 8 is MAGNESIUM ION (three-letter code: MG) (formula: Mg).

Mol	Chain	Residues	Atoms		ZeroOcc	AltConf
8	E	2	Total	Mg	0	0
			2	2		
8	C	1	Total	Mg	0	0
			1	1		
8	F	1	Total	Mg	0	0
			1	1		

- Molecule 9 is water.

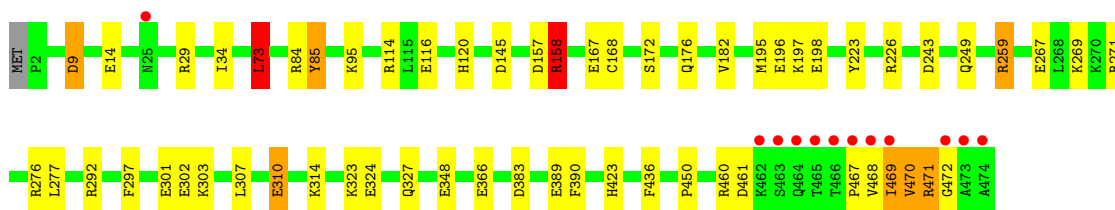
Mol	Chain	Residues	Atoms		ZeroOcc	AltConf
9	A	479	Total	O	0	0
			479	479		
9	E	521	Total	O	0	0
			521	521		
9	C	125	Total	O	0	0
			125	125		
9	D	494	Total	O	0	0
			494	494		
9	B	503	Total	O	0	0
			503	503		
9	F	127	Total	O	0	0
			127	127		

### 3 Residue-property plots [i](#)

These plots are drawn for all protein, RNA, DNA and oligosaccharide chains in the entry. The first graphic for a chain summarises the proportions of the various outlier classes displayed in the second graphic. The second graphic shows the sequence view annotated by issues in geometry and electron density. Residues are color-coded according to the number of geometric quality criteria for which they contain at least one outlier: green = 0, yellow = 1, orange = 2 and red = 3 or more. A red dot above a residue indicates a poor fit to the electron density ( $RSRZ > 2$ ). Stretches of 2 or more consecutive residues without any outlier are shown as a green connector. Residues present in the sample, but not in the model, are shown in grey.

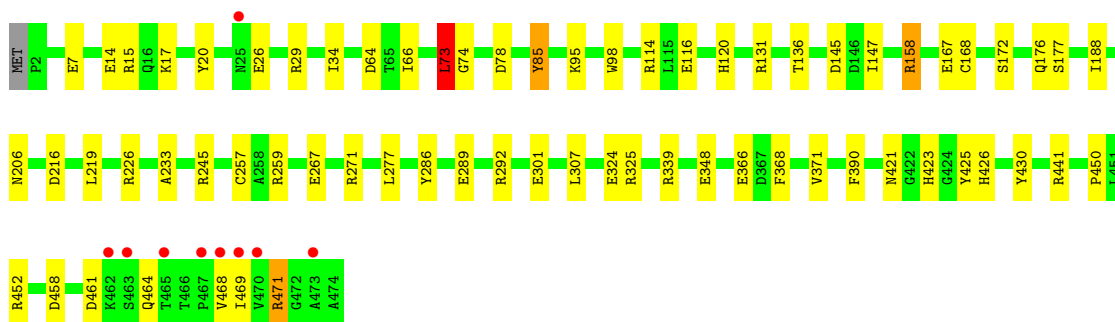
- Molecule 1: Nitrogenase vanadium-iron protein alpha chain

Chain A: 3% 87% 11%



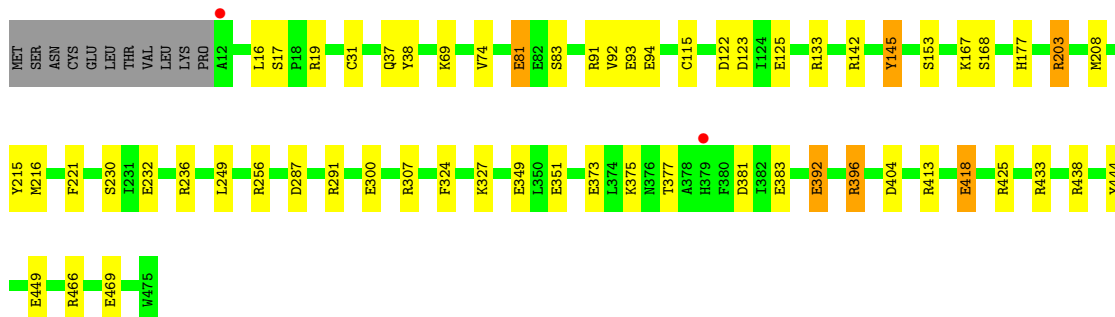
- Molecule 1: Nitrogenase vanadium-iron protein alpha chain

Chain D: 2% 85% 14%



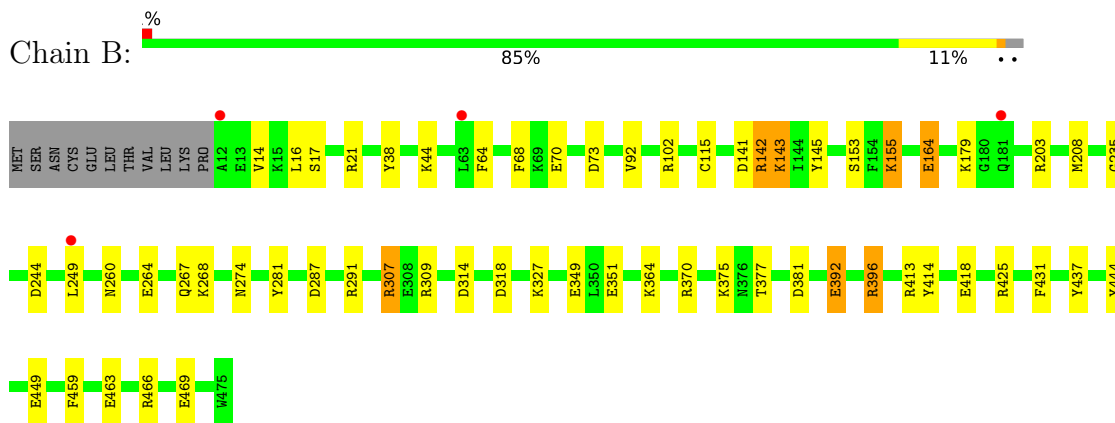
- Molecule 2: Nitrogenase vanadium-iron protein beta chain

Chain E: 85% 11%

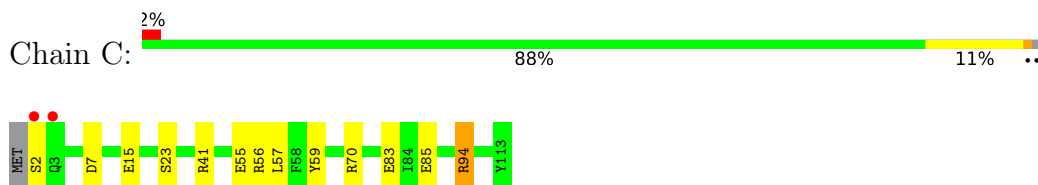




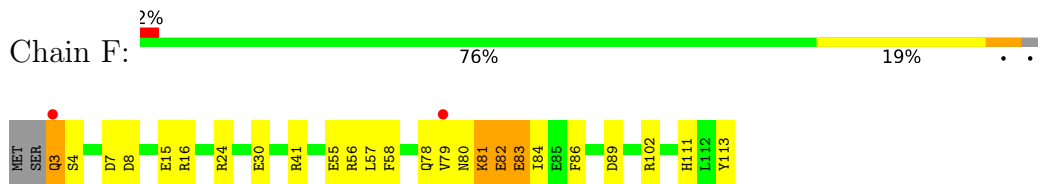
- Molecule 2: Nitrogenase vanadium-iron protein beta chain



- Molecule 3: Nitrogenase vanadium-iron protein delta chain



- Molecule 3: Nitrogenase vanadium-iron protein delta chain



## 4 Data and refinement statistics

Property	Value	Source
Space group	P 1	Depositor
Cell constants a, b, c, $\alpha$ , $\beta$ , $\gamma$	75.25Å 79.79Å 106.97Å 84.06° 72.62° 75.15°	Depositor
Resolution (Å)	102.04 – 1.35 46.52 – 1.35	Depositor EDS
% Data completeness (in resolution range)	96.1 (102.04-1.35) 96.1 (46.52-1.35)	Depositor EDS
$R_{merge}$	0.06	Depositor
$R_{sym}$	(Not available)	Depositor
$\langle I/\sigma(I) \rangle$ <sup>1</sup>	1.47 (at 1.35Å)	Xtrriage
Refinement program	REFMAC 5.8.0155	Depositor
R, $R_{free}$	0.109 , 0.146 0.109 , 0.145	Depositor DCC
$R_{free}$ test set	23846 reflections (4.92%)	wwPDB-VP
Wilson B-factor (Å <sup>2</sup> )	13.3	Xtrriage
Anisotropy	0.144	Xtrriage
Bulk solvent $k_{sol}$ (e/Å <sup>3</sup> ), $B_{sol}$ (Å <sup>2</sup> )	0.34 , 45.1	EDS
L-test for twinning <sup>2</sup>	$\langle  L  \rangle = 0.49$ , $\langle L^2 \rangle = 0.33$	Xtrriage
Estimated twinning fraction	No twinning to report.	Xtrriage
$F_o, F_c$ correlation	0.98	EDS
Total number of atoms	19130	wwPDB-VP
Average B, all atoms (Å <sup>2</sup> )	19.0	wwPDB-VP

Xtrriage's analysis on translational NCS is as follows: *The largest off-origin peak in the Patterson function is 4.28% of the height of the origin peak. No significant pseudotranslation is detected.*

<sup>1</sup>Intensities estimated from amplitudes.

<sup>2</sup>Theoretical values of  $\langle |L| \rangle$ ,  $\langle L^2 \rangle$  for acentric reflections are 0.5, 0.333 respectively for untwinned datasets, and 0.375, 0.2 for perfectly twinned datasets.

## 5 Model quality [i](#)

### 5.1 Standard geometry [i](#)

Bond lengths and bond angles in the following residue types are not validated in this section: CO3, 8P8, HCA, MG, CLF

The Z score for a bond length (or angle) is the number of standard deviations the observed value is removed from the expected value. A bond length (or angle) with  $|Z| > 5$  is considered an outlier worth inspection. RMSZ is the root-mean-square of all Z scores of the bond lengths (or angles).

Mol	Chain	Bond lengths		Bond angles	
		RMSZ	# $ Z  > 5$	RMSZ	# $ Z  > 5$
1	A	1.37	25/3902 (0.6%)	1.26	33/5272 (0.6%)
1	D	1.33	24/3902 (0.6%)	1.25	38/5272 (0.7%)
2	B	1.36	20/3720 (0.5%)	1.35	38/5035 (0.8%)
2	E	1.35	29/3720 (0.8%)	1.32	35/5035 (0.7%)
3	C	1.52	13/956 (1.4%)	1.59	5/1293 (0.4%)
3	F	1.58	12/964 (1.2%)	1.76	10/1304 (0.8%)
All	All	1.37	123/17164 (0.7%)	1.34	159/23211 (0.7%)

The worst 5 of 123 bond length outliers are listed below:

Mol	Chain	Res	Type	Atoms	Z	Observed(Å)	Ideal(Å)
1	D	172	SER	CB-OG	-15.74	1.21	1.42
3	F	56	ARG	CZ-NH1	13.92	1.51	1.33
1	A	324	GLU	CG-CD	12.38	1.70	1.51
1	D	324	GLU	CD-OE2	-11.98	1.12	1.25
1	A	172	SER	CB-OG	-11.73	1.27	1.42

The worst 5 of 159 bond angle outliers are listed below:

Mol	Chain	Res	Type	Atoms	Z	Observed(°)	Ideal(°)
3	F	56	ARG	NE-CZ-NH2	-30.61	105.00	120.30
3	F	56	ARG	NE-CZ-NH1	28.48	134.54	120.30
3	C	56	ARG	NE-CZ-NH1	28.01	134.31	120.30
3	C	56	ARG	NE-CZ-NH2	-22.39	109.11	120.30
2	B	466	ARG	NE-CZ-NH1	-19.03	110.78	120.30

There are no chirality outliers.

There are no planarity outliers.

## 5.2 Too-close contacts [i](#)

In the following table, the Non-H and H(model) columns list the number of non-hydrogen atoms and hydrogen atoms in the chain respectively. The H(added) column lists the number of hydrogen atoms added and optimized by MolProbity. The Clashes column lists the number of clashes within the asymmetric unit, whereas Symm-Clashes lists symmetry-related clashes.

Mol	Chain	Non-H	H(model)	H(added)	Clashes	Symm-Clashes
1	A	3804	0	3725	24	0
1	D	3807	0	3724	27	0
2	B	3643	0	3622	25	0
2	E	3643	0	3622	19	0
3	C	936	0	897	2	0
3	F	944	0	899	9	0
4	A	14	0	6	1	0
4	D	14	0	6	1	0
5	A	17	0	0	0	0
5	D	17	0	0	0	0
6	A	4	0	0	0	0
6	D	4	0	0	0	0
7	A	15	0	0	0	0
7	E	15	0	0	0	0
8	C	1	0	0	0	0
8	E	2	0	0	0	0
8	F	1	0	0	0	0
9	A	479	0	0	8	1
9	B	503	0	0	8	0
9	C	125	0	0	1	0
9	D	494	0	0	4	6
9	E	521	0	0	5	7
9	F	127	0	0	4	0
All	All	19130	0	16501	93	7

The all-atom clashscore is defined as the number of clashes found per 1000 atoms (including hydrogen atoms). The all-atom clashscore for this structure is 3.

The worst 5 of 93 close contacts within the same asymmetric unit are listed below, sorted by their clash magnitude.

Atom-1	Atom-2	Interatomic distance (Å)	Clash overlap (Å)
2:E:81:GLU:HB3	9:E:882:HOH:O	1.35	1.25
2:E:327:LYS:HE3	9:E:634:HOH:O	1.35	1.19
3:F:3:GLN:HB2	9:F:357:HOH:O	1.64	0.97
1:D:17:LYS:HG3	9:D:887:HOH:O	1.66	0.93

*Continued on next page...*

Continued from previous page...

Atom-1	Atom-2	Interatomic distance (Å)	Clash overlap (Å)
1:D:226:ARG:HD3	1:D:307[A]:LEU:HD13	1.52	0.91

The worst 5 of 7 symmetry-related close contacts are listed below. The label for Atom-2 includes the symmetry operator and encoded unit-cell translations to be applied.

Atom-1	Atom-2	Interatomic distance (Å)	Clash overlap (Å)
9:E:1110:HOH:O	9:D:985:HOH:O[1_455]	0.70	1.50
9:E:1120:HOH:O	9:D:971:HOH:O[1_455]	0.77	1.43
9:E:1116:HOH:O	9:D:994:HOH:O[1_455]	0.78	1.42
9:E:1053:HOH:O	9:D:1069:HOH:O[1_455]	0.81	1.39
9:E:1093:HOH:O	9:D:982:HOH:O[1_455]	1.07	1.13

### 5.3 Torsion angles [i](#)

#### 5.3.1 Protein backbone [i](#)

In the following table, the Percentiles column shows the percent Ramachandran outliers of the chain as a percentile score with respect to all X-ray entries followed by that with respect to entries of similar resolution.

The Analysed column shows the number of residues for which the backbone conformation was analysed, and the total number of residues.

Mol	Chain	Analysed	Favoured	Allowed	Outliers	Percentiles	
1	A	474/474 (100%)	463 (98%)	11 (2%)	0	100	100
1	D	474/474 (100%)	459 (97%)	15 (3%)	0	100	100
2	B	464/475 (98%)	457 (98%)	7 (2%)	0	100	100
2	E	464/475 (98%)	456 (98%)	8 (2%)	0	100	100
3	C	110/113 (97%)	105 (96%)	5 (4%)	0	100	100
3	F	111/113 (98%)	107 (96%)	4 (4%)	0	100	100
All	All	2097/2124 (99%)	2047 (98%)	50 (2%)	0	100	100

There are no Ramachandran outliers to report.

### 5.3.2 Protein sidechains [i](#)

In the following table, the Percentiles column shows the percent sidechain outliers of the chain as a percentile score with respect to all X-ray entries followed by that with respect to entries of similar resolution.

The Analysed column shows the number of residues for which the sidechain conformation was analysed, and the total number of residues.

Mol	Chain	Analysed	Rotameric	Outliers	Percentiles
1	A	406/404 (100%)	398 (98%)	8 (2%)	55 21
1	D	406/404 (100%)	400 (98%)	6 (2%)	65 33
2	B	389/398 (98%)	385 (99%)	4 (1%)	76 49
2	E	389/398 (98%)	388 (100%)	1 (0%)	92 83
3	C	101/102 (99%)	100 (99%)	1 (1%)	76 49
3	F	102/102 (100%)	101 (99%)	1 (1%)	76 49
All	All	1793/1808 (99%)	1772 (99%)	21 (1%)	71 42

5 of 21 residues with a non-rotameric sidechain are listed below:

Mol	Chain	Res	Type
1	D	259	ARG
2	B	143	LYS
3	F	81	LYS
2	B	155	LYS
2	B	142	ARG

Sometimes sidechains can be flipped to improve hydrogen bonding and reduce clashes. 5 of 19 such sidechains are listed below:

Mol	Chain	Res	Type
2	B	260	ASN
3	F	109	ASN
3	F	111	HIS
2	B	361	GLN
3	C	46	GLN

### 5.3.3 RNA [i](#)

There are no RNA molecules in this entry.

## 5.4 Non-standard residues in protein, DNA, RNA chains [i](#)

There are no non-standard protein/DNA/RNA residues in this entry.

## 5.5 Carbohydrates [i](#)

There are no monosaccharides in this entry.

## 5.6 Ligand geometry [i](#)

Of 12 ligands modelled in this entry, 4 are monoatomic - leaving 8 for Mogul analysis.

In the following table, the Counts columns list the number of bonds (or angles) for which Mogul statistics could be retrieved, the number of bonds (or angles) that are observed in the model and the number of bonds (or angles) that are defined in the Chemical Component Dictionary. The Link column lists molecule types, if any, to which the group is linked. The Z score for a bond length (or angle) is the number of standard deviations the observed value is removed from the expected value. A bond length (or angle) with  $|Z| > 2$  is considered an outlier worth inspection. RMSZ is the root-mean-square of all Z scores of the bond lengths (or angles).

Mol	Type	Chain	Res	Link	Bond lengths			Bond angles		
					Counts	RMSZ	# Z  > 2	Counts	RMSZ	# Z  > 2
4	HCA	D	501	5	13,13,13	1.07	1 (7%)	14,18,18	1.85	2 (14%)
6	CO3	D	503	5	2,3,3	0.35	0	2,3,3	0.57	0
7	CLF	E	501	1,2	0,24,24	-	-	-	-	-
4	HCA	A	501	5	13,13,13	1.97	3 (23%)	14,18,18	1.75	3 (21%)
7	CLF	A	504	1,2	0,24,24	-	-	-	-	-
5	8P8	A	502	6,1,4	12,28,28	2.20	7 (58%)	-	-	-
6	CO3	A	503	5	2,3,3	0.88	0	2,3,3	0.82	0
5	8P8	D	502	6,1,4	12,28,28	2.17	5 (41%)	-	-	-

In the following table, the Chirals column lists the number of chiral outliers, the number of chiral centers analysed, the number of these observed in the model and the number defined in the Chemical Component Dictionary. Similar counts are reported in the Torsion and Rings columns. '-' means no outliers of that kind were identified.

Mol	Type	Chain	Res	Link	Chirals	Torsions	Rings
7	CLF	A	504	1,2	-	-	0/12/10/10
4	HCA	D	501	5	-	2/17/17/17	-
7	CLF	E	501	1,2	-	-	0/12/10/10
4	HCA	A	501	5	-	2/17/17/17	-

The worst 5 of 16 bond length outliers are listed below:

Mol	Chain	Res	Type	Atoms	Z	Observed(Å)	Ideal(Å)
4	A	501	HCA	C3-C7	-5.53	1.47	1.53
5	D	502	8P8	S1A-FE2	-4.32	2.21	2.32
5	A	502	8P8	S1A-FE2	-3.21	2.24	2.32
5	D	502	8P8	S3B-FE6	-3.12	2.21	2.31
5	A	502	8P8	S2B-FE6	-3.00	2.17	2.24

All (5) bond angle outliers are listed below:

Mol	Chain	Res	Type	Atoms	Z	Observed(°)	Ideal(°)
4	A	501	HCA	O6-C7-C3	4.66	121.14	113.05
4	D	501	HCA	O5-C7-C3	-4.34	116.11	122.25
4	D	501	HCA	O6-C7-C3	4.01	120.02	113.05
4	A	501	HCA	C3-C2-C1	-2.79	107.05	113.81
4	A	501	HCA	O5-C7-C3	-2.03	119.38	122.25

There are no chirality outliers.

All (4) torsion outliers are listed below:

Mol	Chain	Res	Type	Atoms
4	A	501	HCA	C4-C5-C6-O3
4	D	501	HCA	C4-C5-C6-O4
4	A	501	HCA	C4-C5-C6-O4
4	D	501	HCA	C4-C5-C6-O3

There are no ring outliers.

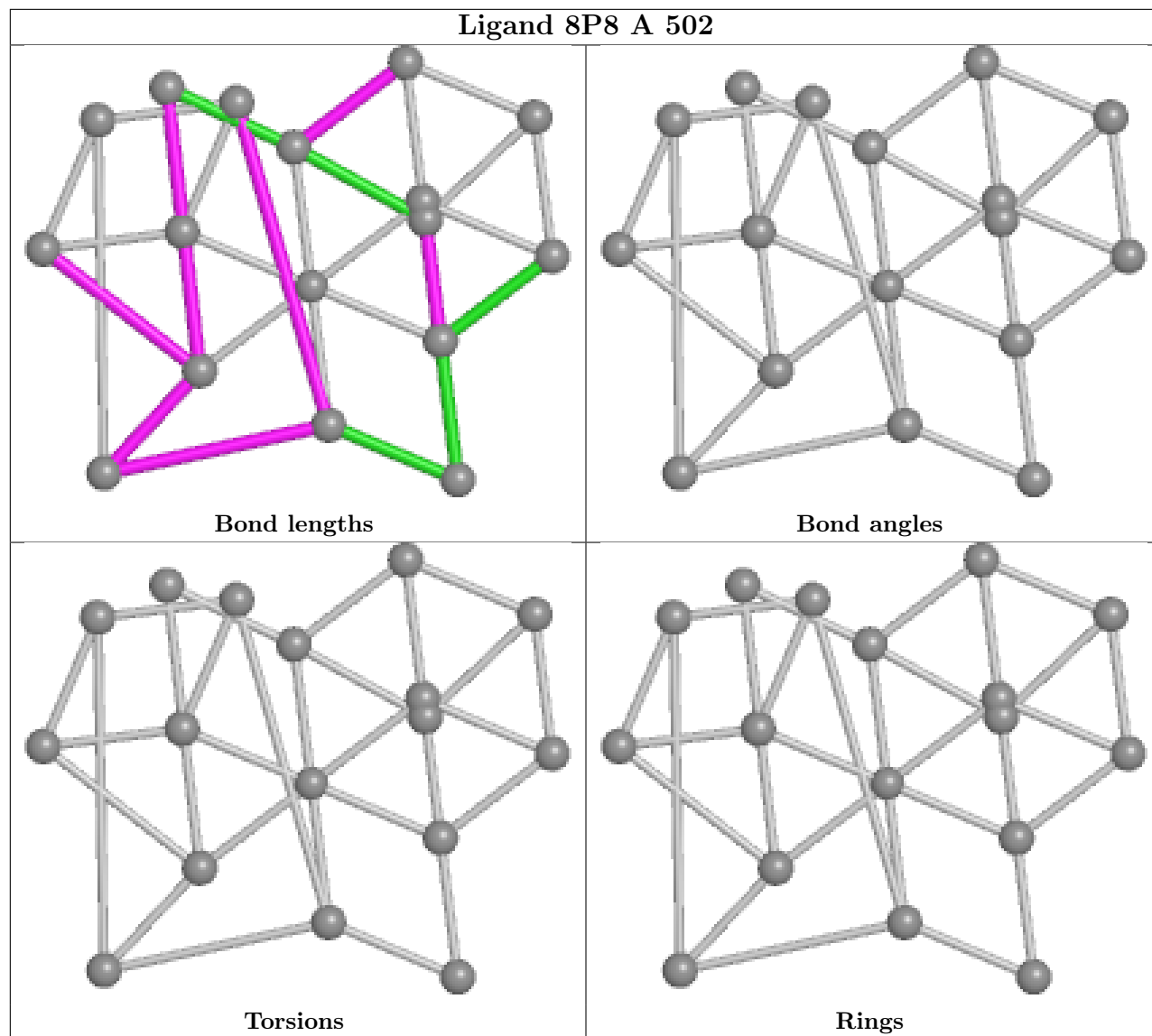
2 monomers are involved in 2 short contacts:

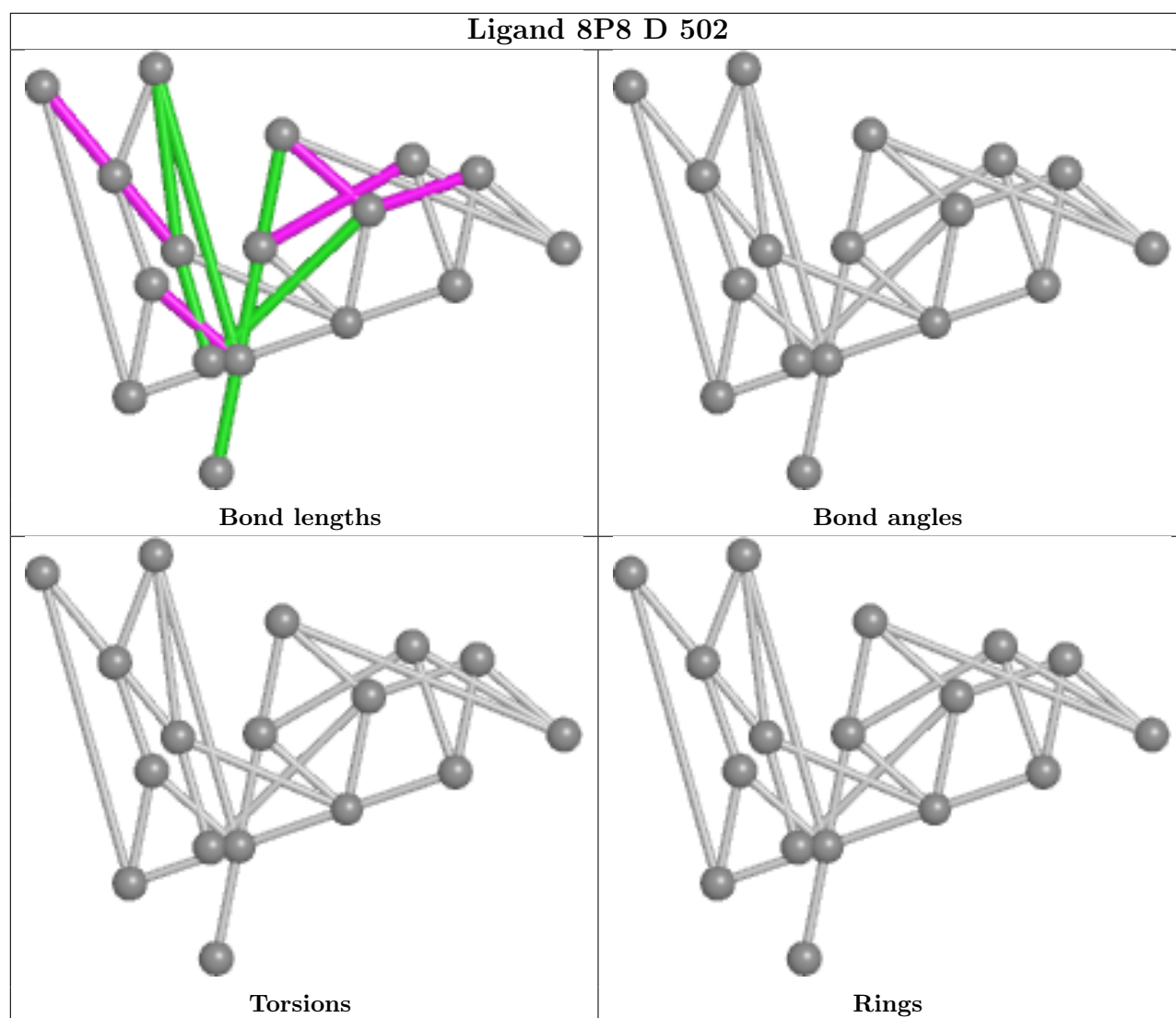
Mol	Chain	Res	Type	Clashes	Symm-Clashes
4	D	501	HCA	1	0
4	A	501	HCA	1	0

The following is a two-dimensional graphical depiction of Mogul quality analysis of bond lengths, bond angles, torsion angles, and ring geometry for all instances of the Ligand of Interest. In addition, ligands with molecular weight > 250 and outliers as shown on the validation Tables will also be included. For torsion angles, if less than 5% of the Mogul distribution of torsion angles is within 10 degrees of the torsion angle in question, then that torsion angle is considered an outlier. Any bond that is central to one or more torsion angles identified as an outlier by Mogul will be highlighted in the graph. For rings, the root-mean-square deviation (RMSD) between the ring in question and similar rings identified by Mogul is calculated over all ring torsion angles. If the average RMSD is greater than 60 degrees and the minimal RMSD between the ring in question and any Mogul-identified rings is also greater than 60 degrees, then that ring is considered an outlier. The outliers are highlighted in purple. The color gray indicates Mogul did not find sufficient



equivalents in the CSD to analyse the geometry.





## 5.7 Other polymers [i](#)

There are no such residues in this entry.

## 5.8 Polymer linkage issues [i](#)

There are no chain breaks in this entry.

## 6 Fit of model and data [i](#)

### 6.1 Protein, DNA and RNA chains [i](#)

In the following table, the column labelled ‘#RSRZ > 2’ contains the number (and percentage) of RSRZ outliers, followed by percent RSRZ outliers for the chain as percentile scores relative to all X-ray entries and entries of similar resolution. The OWAB column contains the minimum, median, 95<sup>th</sup> percentile and maximum values of the occupancy-weighted average B-factor per residue. The column labelled ‘Q < 0.9’ lists the number of (and percentage) of residues with an average occupancy less than 0.9.

Mol	Chain	Analysed	<RSRZ>	#RSRZ>2	OWAB(Å <sup>2</sup> )	Q<0.9
1	A	473/474 (99%)	-0.16	12 (2%) 57 63	10, 15, 32, 55	0
1	D	473/474 (99%)	-0.25	9 (1%) 66 71	8, 14, 30, 52	0
2	B	464/475 (97%)	-0.25	4 (0%) 84 87	10, 15, 30, 57	0
2	E	464/475 (97%)	-0.27	2 (0%) 92 93	9, 14, 26, 52	0
3	C	112/113 (99%)	-0.19	2 (1%) 68 73	14, 21, 37, 48	0
3	F	111/113 (98%)	-0.12	2 (1%) 68 73	13, 20, 50, 70	0
All	All	2097/2124 (98%)	-0.22	31 (1%) 73 78	8, 15, 32, 70	0

The worst 5 of 31 RSRZ outliers are listed below:

Mol	Chain	Res	Type	RSRZ
1	A	468	VAL	6.5
2	E	12	ALA	5.5
1	A	469	ILE	5.1
1	A	465	THR	4.8
3	F	3	GLN	4.7

### 6.2 Non-standard residues in protein, DNA, RNA chains [i](#)

There are no non-standard protein/DNA/RNA residues in this entry.

### 6.3 Carbohydrates [i](#)

There are no monosaccharides in this entry.

## 6.4 Ligands

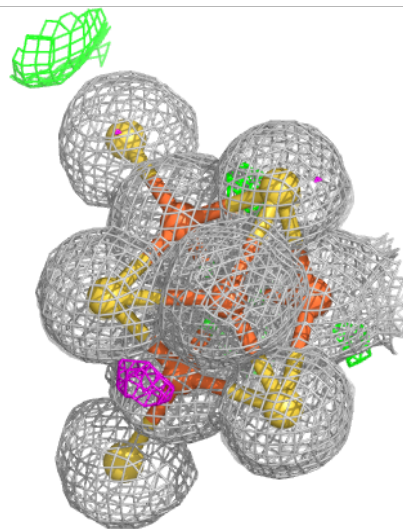
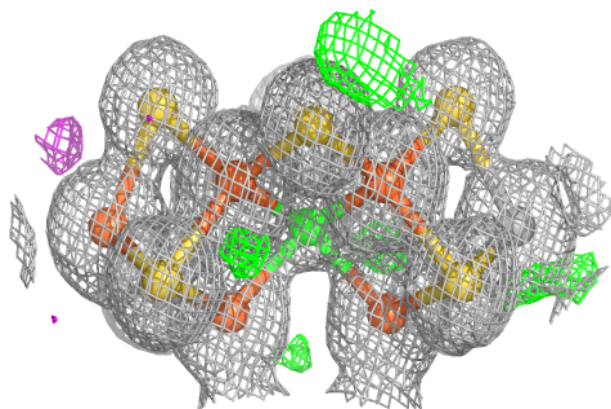
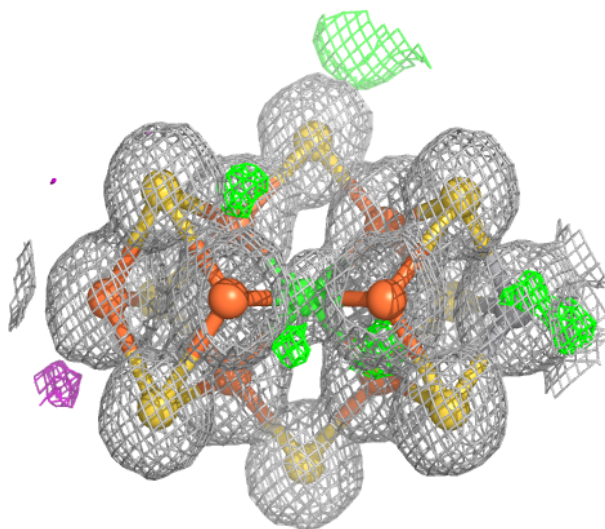
In the following table, the Atoms column lists the number of modelled atoms in the group and the number defined in the chemical component dictionary. The B-factors column lists the minimum, median, 95<sup>th</sup> percentile and maximum values of B factors of atoms in the group. The column labelled 'Q< 0.9' lists the number of atoms with occupancy less than 0.9.

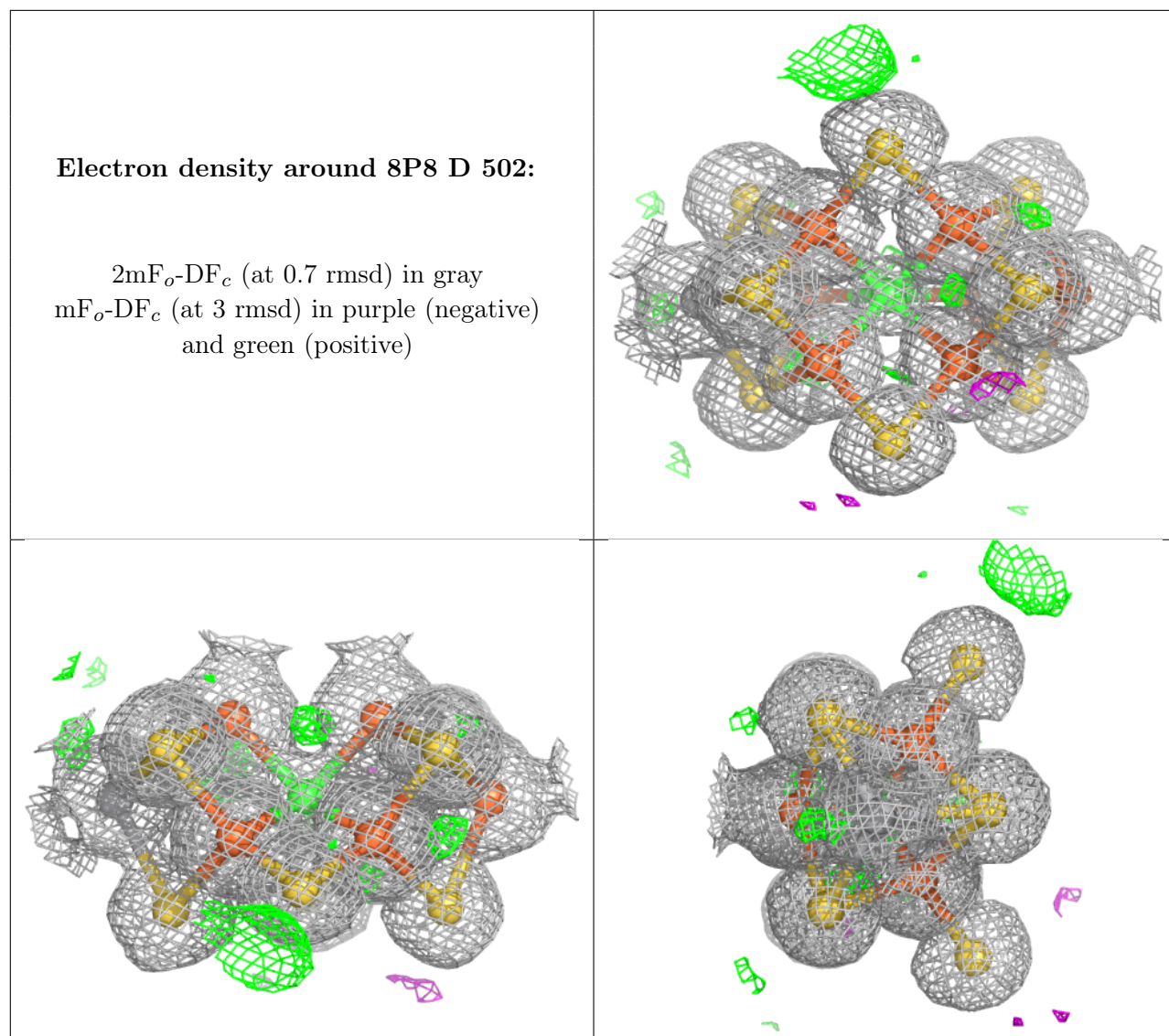
Mol	Type	Chain	Res	Atoms	RSCC	RSR	B-factors(Å <sup>2</sup> )	Q<0.9
4	HCA	A	501	14/14	0.99	0.09	8,11,17,18	0
4	HCA	D	501	14/14	0.99	0.08	7,9,15,16	0
6	CO3	A	503	4/4	0.99	0.09	10,10,10,11	0
6	CO3	D	503	4/4	0.99	0.09	8,10,10,10	0
5	8P8	A	502	17/17	1.00	0.07	10,10,11,14	0
5	8P8	D	502	17/17	1.00	0.07	8,9,10,12	0
7	CLF	A	504	15/15	1.00	0.06	10,11,12,14	0
7	CLF	E	501	15/15	1.00	0.06	8,9,10,13	0
8	MG	E	502	1/1	1.00	0.06	14,14,14,14	0
8	MG	E	503	1/1	1.00	0.05	13,13,13,13	0
8	MG	C	201	1/1	1.00	0.10	22,22,22,22	0
8	MG	F	201	1/1	1.00	0.11	22,22,22,22	0

The following is a graphical depiction of the model fit to experimental electron density of all instances of the Ligand of Interest. In addition, ligands with molecular weight > 250 and outliers as shown on the geometry validation Tables will also be included. Each fit is shown from different orientation to approximate a three-dimensional view.

**Electron density around 8P8 A 502:**

$2mF_o-DF_c$  (at 0.7 rmsd) in gray  
 $mF_o-DF_c$  (at 3 rmsd) in purple (negative)  
and green (positive)





## 6.5 Other polymers [\(i\)](#)

There are no such residues in this entry.