



Full wwPDB NMR Structure Validation Report ⓘ

Oct 26, 2021 – 04:05 PM EDT

PDB ID : 2N96
Title : An unexpected mode of small molecule DNA binding provides the structural basis for DNA cleavage by the potent antiproliferative agent (-)-lomaiviticin A
Authors : Woo, C.M.; Li, Z.; Paulson, E.; Herzon, S.B.
Deposited on : 2015-11-07

This is a Full wwPDB NMR Structure Validation Report for a publicly released PDB entry.

We welcome your comments at validation@mail.wwpdb.org

A user guide is available at

<https://www.wwpdb.org/validation/2017/NMRValidationReportHelp>

with specific help available everywhere you see the ⓘ symbol.

The following versions of software and data (see [references ⓘ](#)) were used in the production of this report:

MolProbity : 4.02b-467
Mogul : 1.8.5 (274361), CSD as541be (2020)
buster-report : 1.1.7 (2018)
Percentile statistics : 20191225.v01 (using entries in the PDB archive December 25th 2019)
RCI : v_1n_11_5_13_A (Berjanski et al., 2005)
PANAV : Wang et al. (2010)
ShiftChecker : 2.23.2
Ideal geometry (proteins) : Engh & Huber (2001)
Ideal geometry (DNA, RNA) : Parkinson et al. (1996)
Validation Pipeline (wwPDB-VP) : 2.23.2

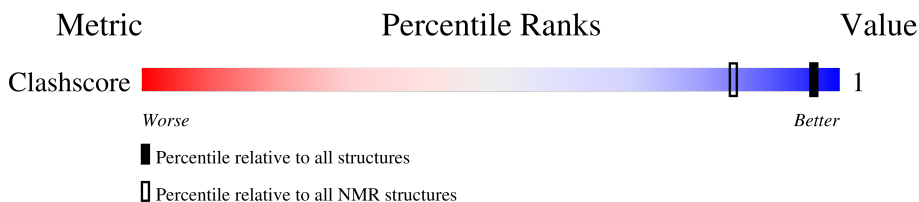
1 Overall quality at a glance i

The following experimental techniques were used to determine the structure:

SOLUTION NMR



The overall completeness of chemical shifts assignment is 48%.

Percentile scores (ranging between 0-100) for global validation metrics of the entry are shown in the following graphic. The table shows the number of entries on which the scores are based.



Metric	Whole archive (#Entries)	NMR archive (#Entries)
Clashscore	158937	12864

The table below summarises the geometric issues observed across the polymeric chains and their fit to the experimental data. The red, orange, yellow and green segments indicate the fraction of residues that contain outliers for ≥ 3 , 2, 1 and 0 types of geometric quality criteria. A cyan segment indicates the fraction of residues that are not part of the well-defined cores, and a grey segment represents the fraction of residues that are not modelled. The numeric value for each fraction is indicated below the corresponding segment, with a dot representing fractions $\leq 5\%$

Mol	Chain	Length	Quality of chain
1	X	8	
1	Y	8	

The following table lists non-polymeric compounds, carbohydrate monomers and non-standard residues in protein, DNA and RNA chains that are outliers for geometric criteria:

Mol	Chain	Compound	Res	Total models with violations	
				Chirality	Geometry
2	Y	4JF	101	6	-

2 Ensemble composition and analysis

This entry contains 6 models. This entry does not contain polypeptide chains, therefore identification of well-defined residues and clustering analysis are not possible. All residues are included in the validation scores.

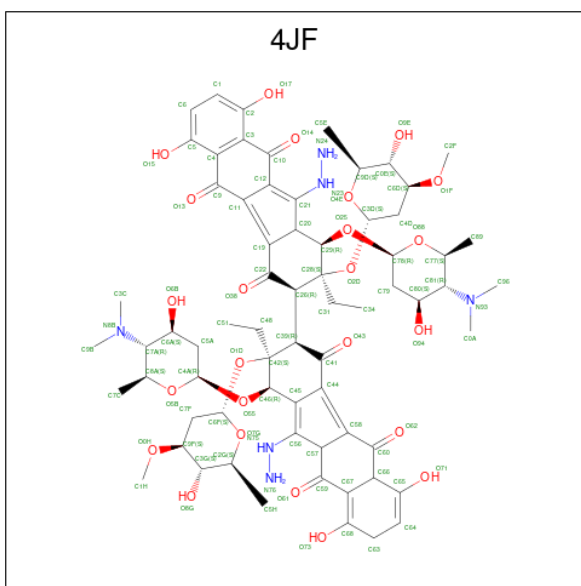
3 Entry composition [i](#)

There are 2 unique types of molecules in this entry. The entry contains 684 atoms, of which 264 are hydrogens and 0 are deuteriums.

- Molecule 1 is a DNA chain called DNA (5'-D(*GP*CP*TP*AP*TP*AP*GP*C)-3').

Mol	Chain	Residues	Atoms					Trace	
			Total	C	H	N	O		P
1	X	8	253	78	92	30	46	7	0
1	Y	8	253	78	92	30	46	7	0

- Molecule 2 is (1R,1'R,2S,2'S,3R,3'R,5aR,10aR,11a'S)-2'-[(2,6-dideoxy-3-O-methyl-alpha-L-arabino-hexopyranosyl)oxy]-2,2'-diethyl-11,11'-dihydrazinyl-6,6',9,9'-tetrahydroxy-4,4',5,5',10,10'-hexaaxo-1,1'-bis[[2,4,6-trideoxy-4-(dimethylamino)-beta-L-arabino-hexopyranosyl]oxy][2,2',3,3',4,4',5,5',5a,8,10,10',10a,11a'-tetradecahydro-1H,1'H-[3,3'-bibenzo[b]fluorene]]-2-yl 2,6-dideoxy-3-O-methyl-alpha-L-arabino-hexopyranoside (three-letter code: 4JF) (formula: C₆₈H₉₀N₆O₂₄).



Mol	Chain	Residues	Atoms				
			Total	C	H	N	O
2	Y	1	178	68	80	6	24

4 Residue-property plots

4.1 Average score per residue in the NMR ensemble

These plots are provided for all protein, RNA, DNA and oligosaccharide chains in the entry. The first graphic is the same as shown in the summary in section 1 of this report. The second graphic shows the sequence where residues are colour-coded according to the number of geometric quality criteria for which they contain at least one outlier: green = 0, yellow = 1, orange = 2 and red = 3 or more. Stretches of 2 or more consecutive residues without any outliers are shown as green connectors. Residues which are classified as ill-defined in the NMR ensemble, are shown in cyan with an underline colour-coded according to the previous scheme. Residues which were present in the experimental sample, but not modelled in the final structure are shown in grey.

- Molecule 1: DNA (5'-D(*GP*CP*TP*AP*TP*AP*GP*C)-3')



- Molecule 1: DNA (5'-D(*GP*CP*TP*AP*TP*AP*GP*C)-3')



4.2 Scores per residue for each member of the ensemble

Colouring as in section 4.1 above.

4.2.1 Score per residue for model 1

- Molecule 1: DNA (5'-D(*GP*CP*TP*AP*TP*AP*GP*C)-3')



- Molecule 1: DNA (5'-D(*GP*CP*TP*AP*TP*AP*GP*C)-3')




4.2.2 Score per residue for model 2

- Molecule 1: DNA (5'-D(*GP*CP*TP*AP*TP*AP*GP*C)-3')

Chain X:  62% 38%

G1
C2
T3
A4
T5
A6
G7
C8

- Molecule 1: DNA (5'-D(*GP*CP*TP*AP*TP*AP*GP*C)-3')

Chain Y:  50% 50%

G9
C10
T11
A12
T13
A14
G15
C16

4.2.3 Score per residue for model 3

- Molecule 1: DNA (5'-D(*GP*CP*TP*AP*TP*AP*GP*C)-3')

Chain X:  25% 62% 12%

G1
C2
T3
A4
T5
A6
G7
C8

- Molecule 1: DNA (5'-D(*GP*CP*TP*AP*TP*AP*GP*C)-3')

Chain Y:  25% 75%

G9
C10
T11
A12
T13
A14
G15
C16

4.2.4 Score per residue for model 4

- Molecule 1: DNA (5'-D(*GP*CP*TP*AP*TP*AP*GP*C)-3')

Chain X:  50% 50%

G1
C2
T3
A4
T5
A6
G7
C8

- Molecule 1: DNA (5'-D(*GP*CP*TP*AP*TP*AP*GP*C)-3')

Chain Y:  100%

G9
C10
T11
A12
T13
A14
G15
C16

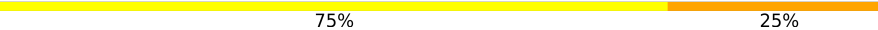
4.2.5 Score per residue for model 5

- Molecule 1: DNA (5'-D(*GP*CP*TP*AP*TP*AP*GP*C)-3')

Chain X:  50% 50%

G1
C2
T3
A4
T5
A6
G7
C8

- Molecule 1: DNA (5'-D(*GP*CP*TP*AP*TP*AP*GP*C)-3')

Chain Y:  75% 25%

G9
C10
T11
A12
T13
A14
G15
C16

4.2.6 Score per residue for model 6

- Molecule 1: DNA (5'-D(*GP*CP*TP*AP*TP*AP*GP*C)-3')

Chain X:  38% 62%

G1
C2
T3
A4
T5
A6
G7
C8

- Molecule 1: DNA (5'-D(*GP*CP*TP*AP*TP*AP*GP*C)-3')

Chain Y:  50% 50%

G9
C10
T11
A12
T13
A14
G15
C16

5 Refinement protocol and experimental data overview

The models were refined using the following method: *molecular dynamics*.

Of the 1000 calculated structures, 6 were deposited, based on the following criterion: *structures with the least restraint violations*.

The following table shows the software used for structure solution, optimisation and refinement.

Software name	Classification	Version
Amber	structure calculation	14
Amber	refinement	14

The following table shows chemical shift validation statistics as aggregates over all chemical shift files. Detailed validation can be found in section 7 of this report.

Chemical shift file(s)	working_cs.cif
Number of chemical shift lists	1
Total number of shifts	236
Number of shifts mapped to atoms	236
Number of unparsed shifts	0
Number of shifts with mapping errors	0
Number of shifts with mapping warnings	0
Assignment completeness (well-defined parts)	48%

6 Model quality i

6.1 Standard geometry i

Bond lengths and bond angles in the following residue types are not validated in this section: 4JF

The Z score for a bond length (or angle) is the number of standard deviations the observed value is removed from the expected value. A bond length (or angle) with $|Z| > 5$ is considered an outlier worth inspection. RMSZ is the (average) root-mean-square of all Z scores of the bond lengths (or angles).

Mol	Chain	Bond lengths		Bond angles	
		RMSZ	#Z>5	RMSZ	#Z>5
1	X	3.31±0.21	24±3/180 (13.1± 1.6%)	3.91±0.19	46±5/276 (16.8± 1.8%)
1	Y	3.28±0.12	24±3/180 (13.1± 1.5%)	4.21±0.24	54±5/276 (19.4± 1.7%)
All	All	3.30	284/2160 (13.1%)	4.07	600/3312 (18.1%)

Chiral center outliers are detected by calculating the chiral volume of a chiral center and verifying if the center is modelled as a planar moiety or with the opposite hand. A planarity outlier is detected by checking planarity of atoms in a peptide group, atoms in a mainchain group or atoms of a sidechain that are expected to be planar.

Mol	Chain	Chirality	Planarity
1	X	0.0±0.0	4.5±1.0
1	Y	0.0±0.0	4.7±2.2
All	All	0	55

All unique bond outliers are listed below. They are sorted according to the Z-score of the worst occurrence in the ensemble.

Mol	Chain	Res	Type	Atoms	Z	Observed(Å)	Ideal(Å)	Models	
								Worst	Total
1	Y	13	DT	C5-C7	12.11	1.57	1.50	2	1
1	X	6	DA	N7-C5	11.89	1.46	1.39	1	3
1	Y	11	DT	P-O5'	-11.78	1.48	1.59	2	3
1	X	7	DG	C2-N2	-11.71	1.22	1.34	4	5
1	Y	16	DC	C4-N4	-11.70	1.23	1.33	5	2
1	X	6	DA	N3-C4	11.55	1.41	1.34	5	1
1	Y	9	DG	C2-N2	-11.47	1.23	1.34	1	1
1	X	7	DG	C6-N1	-11.46	1.31	1.39	3	2
1	X	7	DG	N3-C4	11.03	1.43	1.35	6	3
1	Y	14	DA	C5-C4	-10.88	1.31	1.38	3	1
1	Y	14	DA	N3-C4	10.87	1.41	1.34	2	2
1	X	4	DA	N3-C4	10.54	1.41	1.34	4	3

Continued on next page...

Continued from previous page...

Mol	Chain	Res	Type	Atoms	Z	Observed(Å)	Ideal(Å)	Models	
								Worst	Total
1	Y	14	DA	N7-C5	10.45	1.45	1.39	2	3
1	Y	9	DG	N7-C5	10.42	1.45	1.39	6	4
1	X	4	DA	C5-C4	10.22	1.46	1.38	4	1
1	Y	15	DG	N3-C4	10.05	1.42	1.35	4	1
1	X	5	DT	C5-C7	9.89	1.55	1.50	4	2
1	Y	12	DA	N3-C4	9.70	1.40	1.34	6	3
1	Y	16	DC	C5'-C4'	9.61	1.61	1.51	4	3
1	Y	10	DC	C4-N4	-9.52	1.25	1.33	5	3
1	X	7	DG	O3'-P	9.41	1.72	1.61	2	1
1	X	1	DG	C6-N1	-9.30	1.33	1.39	6	1
1	X	8	DC	C4'-C3'	9.25	1.62	1.53	6	1
1	X	3	DT	C5-C7	9.21	1.55	1.50	3	2
1	X	8	DC	N1-C2	-9.10	1.31	1.40	5	2
1	Y	16	DC	N3-C4	-9.10	1.27	1.33	3	2
1	X	3	DT	C5'-C4'	9.05	1.61	1.51	5	2
1	X	1	DG	O3'-P	8.98	1.72	1.61	5	2
1	Y	13	DT	C5-C6	-8.90	1.28	1.34	6	2
1	X	4	DA	C6-N6	-8.87	1.26	1.33	2	1
1	X	4	DA	N7-C5	8.87	1.44	1.39	3	1
1	Y	14	DA	N1-C2	-8.73	1.26	1.34	6	1
1	X	6	DA	C8-N7	-8.70	1.25	1.31	2	1
1	Y	12	DA	C5'-C4'	8.62	1.60	1.51	4	1
1	X	5	DT	P-O5'	8.53	1.68	1.59	5	2
1	Y	12	DA	N9-C4	-8.46	1.32	1.37	6	3
1	X	7	DG	C8-N7	-8.31	1.25	1.30	5	3
1	X	7	DG	P-O5'	-8.28	1.51	1.59	4	2
1	Y	14	DA	C5'-C4'	8.22	1.60	1.51	3	2
1	X	6	DA	C4'-O4'	-8.09	1.36	1.45	5	1
1	Y	15	DG	C8-N7	8.06	1.35	1.30	2	3
1	Y	15	DG	N1-C2	-8.05	1.31	1.37	6	2
1	X	5	DT	N1-C6	8.01	1.43	1.38	1	2
1	X	2	DC	N1-C6	7.98	1.42	1.37	1	3
1	Y	12	DA	C4'-O4'	-7.95	1.37	1.45	4	1
1	Y	15	DG	N9-C8	7.92	1.43	1.37	6	2
1	Y	11	DT	C5'-C4'	7.88	1.60	1.51	6	2
1	Y	10	DC	C4'-O4'	-7.85	1.37	1.45	3	3
1	X	2	DC	P-O5'	7.82	1.67	1.59	2	2
1	X	4	DA	N9-C4	7.81	1.42	1.37	3	1
1	Y	11	DT	C5-C6	7.79	1.39	1.34	4	3
1	X	4	DA	C6-N1	-7.72	1.30	1.35	1	2
1	X	1	DG	C2-N2	-7.70	1.26	1.34	2	5

Continued on next page...

Continued from previous page...

Mol	Chain	Res	Type	Atoms	Z	Observed(Å)	Ideal(Å)	Models	
								Worst	Total
1	Y	13	DT	C5'-C4'	7.68	1.59	1.51	6	2
1	Y	15	DG	C6-N1	-7.63	1.34	1.39	5	1
1	Y	16	DC	C2-O2	7.61	1.31	1.24	2	1
1	Y	13	DT	C1'-N1	7.59	1.59	1.49	1	1
1	X	4	DA	C4'-O4'	-7.54	1.37	1.45	3	3
1	Y	14	DA	O3'-P	-7.47	1.52	1.61	4	1
1	Y	9	DG	C4'-O4'	-7.47	1.37	1.45	2	3
1	X	5	DT	N1-C2	7.33	1.44	1.38	6	3
1	Y	9	DG	N3-C4	7.32	1.40	1.35	3	2
1	Y	14	DA	C6-N1	-7.29	1.30	1.35	3	3
1	X	7	DG	C2'-C1'	7.29	1.59	1.52	6	1
1	X	4	DA	C8-N7	7.25	1.36	1.31	3	2
1	X	1	DG	C8-N7	7.24	1.35	1.30	2	1
1	X	3	DT	N1-C2	7.21	1.43	1.38	2	2
1	Y	14	DA	C2'-C1'	7.14	1.59	1.52	1	1
1	Y	14	DA	N9-C4	7.14	1.42	1.37	5	2
1	X	5	DT	C2-O2	7.07	1.28	1.22	5	2
1	X	1	DG	C2-N3	7.07	1.38	1.32	4	2
1	X	6	DA	P-O5'	-6.99	1.52	1.59	6	1
1	Y	14	DA	C3'-O3'	-6.96	1.34	1.44	3	1
1	Y	15	DG	C5'-C4'	6.88	1.58	1.51	5	1
1	X	1	DG	C5-C6	6.87	1.49	1.42	2	2
1	Y	12	DA	N7-C5	6.84	1.43	1.39	3	2
1	Y	13	DT	C4'-C3'	6.83	1.60	1.53	4	2
1	X	2	DC	C4-C5	6.77	1.48	1.43	1	1
1	Y	11	DT	N3-C4	6.69	1.44	1.38	5	2
1	X	4	DA	N1-C2	-6.65	1.28	1.34	3	2
1	Y	11	DT	C2'-C1'	-6.62	1.45	1.52	6	2
1	Y	11	DT	N1-C6	6.61	1.42	1.38	1	2
1	X	7	DG	C4'-O4'	-6.57	1.38	1.45	6	2
1	Y	13	DT	C4-C5	6.56	1.50	1.45	6	1
1	Y	10	DC	C5-C6	6.54	1.39	1.34	1	1
1	Y	10	DC	N1-C6	6.53	1.41	1.37	6	1
1	X	5	DT	C2'-C1'	-6.51	1.45	1.52	5	1
1	Y	16	DC	N1-C6	6.49	1.41	1.37	4	1
1	X	1	DG	C4'-C3'	6.46	1.59	1.53	2	2
1	Y	14	DA	C4'-C3'	6.40	1.59	1.53	3	1
1	X	4	DA	N9-C8	6.39	1.42	1.37	6	1
1	Y	14	DA	C5-C6	6.37	1.46	1.41	4	1
1	X	3	DT	C2-N3	6.36	1.42	1.37	4	1
1	X	3	DT	N1-C6	-6.34	1.33	1.38	2	2

Continued on next page...

Continued from previous page...

Mol	Chain	Res	Type	Atoms	Z	Observed(Å)	Ideal(Å)	Models	
								Worst	Total
1	X	3	DT	C2'-C1'	6.31	1.58	1.52	4	1
1	X	8	DC	C4'-O4'	-6.31	1.38	1.45	5	1
1	Y	9	DG	C6-N1	6.31	1.44	1.39	1	2
1	Y	9	DG	C4'-C3'	6.30	1.59	1.53	2	1
1	Y	10	DC	C2'-C1'	6.29	1.58	1.52	3	2
1	X	8	DC	C4-N4	-6.28	1.28	1.33	4	1
1	Y	15	DG	C5-C4	-6.27	1.33	1.38	4	3
1	X	4	DA	C5'-C4'	6.23	1.58	1.51	4	2
1	X	4	DA	C5-C6	-6.19	1.35	1.41	4	2
1	X	2	DC	C2-O2	-6.19	1.18	1.24	6	1
1	Y	9	DG	N9-C4	-6.18	1.33	1.38	1	1
1	Y	12	DA	C5-C4	-6.17	1.34	1.38	4	1
1	Y	11	DT	O4'-C1'	-6.14	1.34	1.42	5	1
1	Y	15	DG	C5-C6	6.11	1.48	1.42	6	1
1	Y	14	DA	C8-N7	-6.11	1.27	1.31	5	1
1	X	2	DC	N3-C4	6.10	1.38	1.33	3	3
1	X	6	DA	N9-C8	6.09	1.42	1.37	1	1
1	X	6	DA	C2'-C1'	6.07	1.58	1.52	1	1
1	X	7	DG	C3'-O3'	-6.06	1.36	1.44	3	1
1	Y	12	DA	C6-N1	-6.04	1.31	1.35	3	2
1	X	1	DG	C5-C4	6.04	1.42	1.38	3	1
1	X	2	DC	C2-N3	-5.99	1.30	1.35	2	1
1	Y	12	DA	C3'-C2'	-5.98	1.45	1.52	4	2
1	X	8	DC	C5'-C4'	5.97	1.57	1.51	6	2
1	X	6	DA	C5-C4	-5.96	1.34	1.38	5	2
1	X	3	DT	N3-C4	-5.96	1.33	1.38	6	1
1	Y	9	DG	C5'-C4'	5.93	1.57	1.51	2	2
1	Y	13	DT	C2-N3	5.92	1.42	1.37	6	1
1	Y	11	DT	O3'-P	-5.91	1.54	1.61	4	2
1	X	5	DT	C4'-O4'	-5.90	1.39	1.45	3	1
1	X	7	DG	N7-C5	5.88	1.42	1.39	1	2
1	Y	16	DC	C1'-N1	5.86	1.56	1.49	3	1
1	Y	11	DT	C3'-O3'	-5.86	1.36	1.44	5	2
1	Y	11	DT	C4-C5	5.84	1.50	1.45	6	2
1	Y	15	DG	N7-C5	5.82	1.42	1.39	5	1
1	Y	12	DA	N9-C8	-5.82	1.33	1.37	2	1
1	Y	9	DG	N1-C2	-5.79	1.33	1.37	1	1
1	X	8	DC	C4-C5	-5.77	1.38	1.43	1	1
1	Y	14	DA	P-O5'	-5.77	1.53	1.59	2	2
1	Y	9	DG	C2'-C1'	-5.75	1.46	1.52	5	2
1	X	4	DA	O4'-C1'	-5.73	1.35	1.42	5	1

Continued on next page...

Continued from previous page...

Mol	Chain	Res	Type	Atoms	Z	Observed(Å)	Ideal(Å)	Models	
								Worst	Total
1	Y	13	DT	N1-C2	5.72	1.42	1.38	4	2
1	X	5	DT	C2-N3	-5.70	1.33	1.37	5	1
1	X	2	DC	C2'-C1'	5.69	1.58	1.52	6	1
1	X	5	DT	O3'-P	-5.69	1.54	1.61	1	1
1	Y	9	DG	N9-C8	5.69	1.41	1.37	4	1
1	X	6	DA	C5'-C4'	5.64	1.57	1.51	1	3
1	Y	16	DC	C4'-O4'	-5.63	1.39	1.45	2	1
1	X	1	DG	C3'-C2'	5.60	1.58	1.52	1	1
1	Y	11	DT	C5-C7	5.56	1.53	1.50	3	1
1	X	1	DG	N3-C4	5.54	1.39	1.35	3	1
1	X	6	DA	N9-C4	-5.53	1.34	1.37	6	1
1	Y	15	DG	C3'-O3'	-5.50	1.36	1.44	6	1
1	Y	16	DC	C3'-O3'	-5.47	1.36	1.44	5	1
1	X	6	DA	C6-N1	-5.43	1.31	1.35	2	3
1	Y	9	DG	C5-C6	5.43	1.47	1.42	4	1
1	Y	11	DT	C2-O2	5.43	1.26	1.22	6	1
1	X	2	DC	C5-C6	5.41	1.38	1.34	3	1
1	X	1	DG	N7-C5	5.39	1.42	1.39	6	1
1	X	6	DA	C3'-C2'	5.39	1.58	1.52	4	1
1	Y	12	DA	C4'-C3'	5.39	1.58	1.53	1	1
1	X	1	DG	N9-C8	5.37	1.41	1.37	1	1
1	X	3	DT	C4'-C3'	-5.35	1.47	1.52	5	2
1	Y	9	DG	C8-N7	5.34	1.34	1.30	1	1
1	X	7	DG	C2-N3	5.34	1.37	1.32	4	1
1	Y	14	DA	C4'-O4'	-5.30	1.39	1.45	3	1
1	X	2	DC	C4-N4	-5.30	1.29	1.33	4	1
1	X	7	DG	N9-C8	-5.29	1.34	1.37	5	1
1	X	2	DC	C5'-C4'	5.26	1.57	1.51	3	1
1	X	3	DT	C3'-O3'	5.21	1.50	1.44	2	1
1	X	7	DG	N1-C2	-5.21	1.33	1.37	3	1
1	X	4	DA	C4'-C3'	5.18	1.58	1.53	4	1
1	Y	10	DC	C2-N3	5.17	1.39	1.35	5	1
1	Y	15	DG	C6-O6	5.15	1.28	1.24	4	1
1	Y	9	DG	C2-N3	5.15	1.36	1.32	1	1
1	Y	14	DA	C3'-C2'	-5.14	1.46	1.52	5	1
1	Y	11	DT	C2-N3	5.08	1.41	1.37	6	1
1	X	3	DT	O3'-P	-5.06	1.55	1.61	6	2
1	Y	12	DA	N1-C2	-5.05	1.29	1.34	2	1
1	X	7	DG	N9-C4	-5.03	1.33	1.38	4	1
1	Y	15	DG	C2-N2	-5.00	1.29	1.34	5	1

All unique angle outliers are listed below. They are sorted according to the Z-score of the worst

occurrence in the ensemble.

Mol	Chain	Res	Type	Atoms	Z	Observed(°)	Ideal(°)	Models	
								Worst	Total
1	X	5	DT	C6-C5-C7	-20.41	110.65	122.90	4	2
1	X	4	DA	O4'-C1'-N9	19.73	121.81	108.00	1	6
1	X	6	DA	N1-C6-N6	-17.16	108.30	118.60	6	5
1	Y	14	DA	C4-C5-C6	-16.96	108.52	117.00	3	2
1	Y	16	DC	N3-C4-C5	16.77	128.61	121.90	3	5
1	Y	12	DA	N1-C6-N6	-16.40	108.76	118.60	6	6
1	Y	10	DC	O4'-C1'-N1	16.34	119.44	108.00	2	4
1	Y	9	DG	O4'-C1'-N9	16.25	119.38	108.00	1	3
1	X	6	DA	O4'-C1'-N9	15.63	118.94	108.00	2	3
1	X	8	DC	N3-C4-C5	15.56	128.12	121.90	4	3
1	X	1	DG	O4'-C1'-N9	15.43	118.80	108.00	3	3
1	Y	15	DG	C8-N9-C4	-15.33	100.27	106.40	6	2
1	X	6	DA	C5-C6-N1	15.18	125.29	117.70	3	4
1	Y	14	DA	C5-C6-N1	15.11	125.25	117.70	3	3
1	Y	15	DG	N7-C8-N9	15.02	120.61	113.10	6	3
1	Y	13	DT	O4'-C1'-N1	14.63	118.24	108.00	6	5
1	Y	9	DG	C4-C5-N7	-14.42	105.03	110.80	5	3
1	X	7	DG	C2-N3-C4	14.39	119.10	111.90	4	2
1	Y	12	DA	C5-C6-N1	14.36	124.88	117.70	4	5
1	Y	16	DC	C2-N3-C4	-14.24	112.78	119.90	3	3
1	X	3	DT	O4'-C4'-C3'	14.19	114.51	106.00	1	3
1	Y	14	DA	N1-C6-N6	-14.01	110.20	118.60	3	5
1	X	3	DT	O4'-C1'-N1	13.99	117.79	108.00	5	3
1	X	2	DC	O4'-C1'-N1	13.93	117.75	108.00	5	2
1	Y	15	DG	C5-N7-C8	-13.90	97.35	104.30	6	3
1	Y	15	DG	O4'-C4'-C3'	13.88	114.33	106.00	6	4
1	Y	13	DT	N3-C2-O2	-13.75	114.05	122.30	6	3
1	Y	14	DA	O4'-C1'-N9	13.47	117.43	108.00	1	5
1	Y	9	DG	O4'-C1'-C2'	-13.46	95.13	105.90	3	3
1	Y	11	DT	O4'-C1'-N1	13.34	117.34	108.00	5	3
1	X	2	DC	N1-C2-O2	13.17	126.80	118.90	6	3
1	X	6	DA	O4'-C4'-C3'	12.90	113.74	106.00	5	1
1	X	8	DC	C2-N3-C4	-12.77	113.51	119.90	2	3
1	X	7	DG	N3-C4-C5	-12.62	122.29	128.60	4	2
1	X	1	DG	N1-C6-O6	-12.58	112.35	119.90	6	5
1	X	4	DA	C8-N9-C4	-12.51	100.80	105.80	2	4
1	Y	13	DT	C5-C6-N1	-12.45	116.23	123.70	1	3
1	Y	15	DG	N1-C6-O6	-12.41	112.45	119.90	2	1
1	Y	11	DT	C6-C5-C7	-12.29	115.52	122.90	4	5
1	Y	13	DT	C6-C5-C7	-12.23	115.56	122.90	5	2
1	Y	13	DT	N3-C4-O4	-12.19	112.59	119.90	2	3

Continued on next page...

Continued from previous page...

Mol	Chain	Res	Type	Atoms	Z	Observed(°)	Ideal(°)	Models	
								Worst	Total
1	Y	16	DC	N3-C2-O2	-12.14	113.40	121.90	3	6
1	Y	10	DC	N1-C2-O2	12.03	126.12	118.90	5	2
1	X	2	DC	N3-C2-O2	-11.94	113.54	121.90	6	6
1	Y	12	DA	O4'-C1'-N9	11.88	116.31	108.00	3	3
1	X	4	DA	N7-C8-N9	11.76	119.68	113.80	2	2
1	Y	14	DA	O4'-C4'-C3'	11.64	112.98	106.00	1	2
1	Y	9	DG	C8-N9-C4	11.62	111.05	106.40	1	2
1	X	2	DC	C6-N1-C2	-11.50	115.70	120.30	2	5
1	Y	15	DG	O4'-C1'-N9	11.48	116.04	108.00	1	4
1	Y	12	DA	N1-C2-N3	-11.46	123.57	129.30	1	2
1	X	6	DA	C4-C5-C6	-11.38	111.31	117.00	2	3
1	Y	16	DC	C5-C6-N1	-11.16	115.42	121.00	3	3
1	X	6	DA	N9-C4-C5	-11.07	101.37	105.80	4	2
1	Y	15	DG	O4'-C1'-C2'	-10.98	97.12	105.90	2	1
1	X	5	DT	N3-C2-O2	-10.86	115.79	122.30	1	3
1	X	8	DC	N1-C2-N3	10.81	126.77	119.20	2	1
1	Y	13	DT	C5-C4-O4	10.74	132.42	124.90	2	2
1	Y	12	DA	C5-N7-C8	-10.69	98.55	103.90	4	1
1	Y	10	DC	N3-C4-N4	-10.62	110.56	118.00	5	2
1	Y	10	DC	N3-C4-C5	10.57	126.13	121.90	6	3
1	Y	10	DC	N3-C2-O2	-10.55	114.51	121.90	5	3
1	X	5	DT	C4-C5-C7	10.53	125.32	119.00	4	1
1	Y	9	DG	C5-N7-C8	10.51	109.56	104.30	5	4
1	Y	15	DG	C5-C6-N1	10.50	116.75	111.50	2	4
1	X	4	DA	N1-C6-N6	-10.47	112.32	118.60	6	5
1	X	6	DA	C6-N1-C2	-10.47	112.32	118.60	6	4
1	X	3	DT	N3-C2-O2	-10.43	116.04	122.30	4	4
1	Y	12	DA	C4-C5-C6	-10.42	111.79	117.00	4	5
1	X	7	DG	N1-C6-O6	-10.32	113.71	119.90	3	4
1	Y	11	DT	C4-C5-C7	10.25	125.15	119.00	4	2
1	Y	14	DA	N9-C4-C5	-10.18	101.73	105.80	5	2
1	Y	16	DC	N1-C2-O2	10.15	124.99	118.90	1	6
1	X	4	DA	O4'-C1'-C2'	-10.10	97.82	105.90	6	3
1	Y	15	DG	N1-C2-N3	10.10	129.96	123.90	3	1
1	X	5	DT	C6-N1-C2	-10.06	116.27	121.30	1	2
1	Y	14	DA	C2-N3-C4	10.04	115.62	110.60	6	2
1	Y	14	DA	C8-N9-C4	-9.94	101.83	105.80	6	2
1	Y	11	DT	N3-C2-O2	-9.87	116.38	122.30	6	4
1	X	5	DT	N3-C4-O4	-9.78	114.03	119.90	1	3
1	X	7	DG	C8-N9-C4	-9.76	102.50	106.40	5	5
1	Y	13	DT	C2-N3-C4	-9.73	121.36	127.20	4	3

Continued on next page...

Continued from previous page...

Mol	Chain	Res	Type	Atoms	Z	Observed(°)	Ideal(°)	Models	
								Worst	Total
1	Y	13	DT	O4'-C1'-C2'	-9.72	98.12	105.90	6	5
1	Y	14	DA	N7-C8-N9	9.69	118.64	113.80	1	2
1	Y	10	DC	C2-N3-C4	-9.69	115.06	119.90	6	3
1	Y	9	DG	O4'-C4'-C3'	-9.67	100.20	106.00	2	2
1	X	7	DG	O4'-C4'-C3'	9.64	111.78	106.00	1	3
1	Y	14	DA	C5-N7-C8	-9.57	99.11	103.90	6	1
1	X	1	DG	N3-C4-C5	-9.56	123.82	128.60	5	3
1	Y	15	DG	C6-C5-N7	9.55	136.13	130.40	3	2
1	X	2	DC	O4'-C4'-C3'	9.54	111.72	106.00	6	3
1	X	8	DC	C6-N1-C2	-9.47	116.51	120.30	3	3
1	X	3	DT	C6-N1-C2	-9.43	116.59	121.30	5	2
1	X	3	DT	C2-N3-C4	-9.38	121.57	127.20	4	3
1	Y	9	DG	N3-C4-N9	9.35	131.61	126.00	4	1
1	Y	16	DC	O4'-C1'-N1	9.27	114.49	108.00	6	2
1	Y	9	DG	N3-C4-C5	-9.19	124.01	128.60	5	1
1	X	3	DT	N1-C2-O2	9.18	130.44	123.10	3	1
1	X	7	DG	N7-C8-N9	9.16	117.68	113.10	1	2
1	Y	15	DG	N3-C4-C5	-9.14	124.03	128.60	1	2
1	Y	13	DT	C6-N1-C2	9.11	125.85	121.30	1	2
1	X	3	DT	N1-C2-N3	9.10	120.06	114.60	4	1
1	Y	16	DC	O4'-C1'-C2'	9.10	113.18	105.90	5	1
1	Y	9	DG	N9-C4-C5	-9.01	101.80	105.40	4	2
1	Y	10	DC	C5-C4-N4	8.96	126.47	120.20	3	1
1	Y	14	DA	C6-C5-N7	8.95	138.57	132.30	3	3
1	X	8	DC	N3-C2-O2	-8.92	115.66	121.90	5	4
1	X	5	DT	C4-C5-C6	8.87	123.32	118.00	4	1
1	X	6	DA	C8-N9-C4	8.87	109.35	105.80	4	1
1	X	1	DG	C5-C6-O6	8.86	133.91	128.60	6	2
1	X	4	DA	N9-C4-C5	-8.84	102.27	105.80	5	3
1	Y	12	DA	O4'-C4'-C3'	8.83	111.30	106.00	3	4
1	X	7	DG	C5-C6-N1	8.83	115.91	111.50	4	2
1	Y	15	DG	P-O3'-C3'	8.76	130.21	119.70	4	1
1	Y	14	DA	C6-N1-C2	-8.66	113.41	118.60	2	2
1	Y	15	DG	C4'-C3'-C2'	-8.64	95.32	103.10	6	2
1	X	7	DG	N3-C2-N2	-8.58	113.89	119.90	5	3
1	X	8	DC	O4'-C1'-N1	8.58	114.01	108.00	3	3
1	X	6	DA	N1-C2-N3	-8.53	125.04	129.30	1	4
1	X	1	DG	C8-N9-C4	8.53	109.81	106.40	6	3
1	Y	12	DA	C2-N3-C4	8.50	114.85	110.60	1	3
1	Y	13	DT	C4-C5-C7	-8.44	113.94	119.00	2	3
1	Y	11	DT	C6-N1-C2	-8.44	117.08	121.30	5	2

Continued on next page...

Continued from previous page...

Mol	Chain	Res	Type	Atoms	Z	Observed(°)	Ideal(°)	Models	
								Worst	Total
1	Y	10	DC	O4'-C4'-C3'	8.42	111.05	106.00	4	2
1	X	6	DA	C4'-C3'-C2'	-8.42	95.52	103.10	5	1
1	Y	12	DA	C6-C5-N7	8.38	138.16	132.30	3	5
1	Y	13	DT	C4-C5-C6	8.35	123.01	118.00	3	4
1	Y	9	DG	N7-C8-N9	-8.32	108.94	113.10	1	1
1	X	3	DT	O4'-C1'-C2'	8.19	112.45	105.90	1	1
1	X	3	DT	C6-C5-C7	-8.19	117.99	122.90	3	2
1	Y	9	DG	N3-C2-N2	-8.18	114.17	119.90	4	1
1	Y	12	DA	C1'-O4'-C4'	-8.17	101.93	110.10	4	4
1	Y	15	DG	C6-N1-C2	-8.17	120.20	125.10	3	2
1	X	4	DA	C5-N7-C8	-8.17	99.82	103.90	4	3
1	Y	13	DT	N1-C2-N3	8.00	119.40	114.60	4	3
1	X	8	DC	N3-C4-N4	-7.81	112.53	118.00	2	2
1	Y	12	DA	N7-C8-N9	7.80	117.70	113.80	4	3
1	Y	10	DC	O4'-C1'-C2'	-7.79	99.67	105.90	3	1
1	Y	11	DT	N3-C4-O4	-7.68	115.29	119.90	2	2
1	Y	15	DG	C4-C5-N7	-7.67	107.73	110.80	3	4
1	X	6	DA	O4'-C1'-C2'	7.52	111.92	105.90	4	1
1	Y	14	DA	N1-C2-N3	-7.51	125.55	129.30	1	4
1	Y	16	DC	N3-C4-N4	-7.49	112.76	118.00	6	3
1	Y	15	DG	C4-C5-C6	-7.46	114.32	118.80	2	2
1	X	4	DA	O4'-C4'-C3'	7.46	110.47	106.00	4	1
1	X	5	DT	C3'-C2'-C1'	7.42	111.41	102.50	5	1
1	X	1	DG	O4'-C1'-C2'	-7.39	99.99	105.90	6	3
1	Y	12	DA	C4'-C3'-C2'	-7.34	96.49	103.10	2	1
1	X	4	DA	C4'-C3'-C2'	-7.32	96.51	103.10	4	2
1	X	4	DA	C4-C5-C6	-7.32	113.34	117.00	4	4
1	X	3	DT	N3-C4-O4	-7.24	115.56	119.90	6	1
1	X	8	DC	C5-C4-N4	7.23	125.26	120.20	2	2
1	Y	14	DA	N3-C4-C5	7.23	131.86	126.80	3	3
1	Y	11	DT	O4'-C4'-C3'	7.21	110.33	106.00	6	3
1	X	8	DC	C5-C6-N1	-7.21	117.40	121.00	2	2
1	X	6	DA	C4-C5-N7	7.21	114.30	110.70	4	1
1	Y	10	DC	C5-C6-N1	-7.20	117.40	121.00	2	1
1	Y	11	DT	C5-C6-N1	-7.19	119.39	123.70	3	3
1	X	7	DG	N9-C4-C5	7.18	108.27	105.40	4	3
1	X	2	DC	C2-N3-C4	-7.12	116.34	119.90	3	1
1	X	2	DC	C5-C6-N1	-7.12	117.44	121.00	1	1
1	X	1	DG	C2-N3-C4	7.08	115.44	111.90	5	1
1	Y	14	DA	O4'-C1'-C2'	-7.08	100.24	105.90	6	2
1	X	5	DT	O4'-C1'-N1	7.06	112.94	108.00	5	3

Continued on next page...

Continued from previous page...

Mol	Chain	Res	Type	Atoms	Z	Observed(°)	Ideal(°)	Models	
								Worst	Total
1	X	6	DA	C5-C6-N6	7.04	129.34	123.70	6	1
1	X	4	DA	C4-C5-N7	7.00	114.20	110.70	5	1
1	X	4	DA	C5-C6-N1	6.97	121.18	117.70	4	3
1	Y	12	DA	C8-N9-C4	-6.94	103.03	105.80	4	1
1	Y	11	DT	C4'-C3'-C2'	6.91	109.32	103.10	2	1
1	Y	12	DA	N9-C4-C5	6.90	108.56	105.80	4	1
1	Y	9	DG	C5-C6-O6	6.88	132.73	128.60	2	1
1	X	2	DC	N3-C4-N4	6.87	122.81	118.00	2	2
1	X	1	DG	C5-N7-C8	6.86	107.73	104.30	1	1
1	Y	15	DG	C5-C6-O6	6.84	132.71	128.60	1	1
1	X	6	DA	C5-N7-C8	-6.82	100.49	103.90	3	4
1	Y	12	DA	C5-C6-N6	6.80	129.14	123.70	5	2
1	Y	11	DT	N1-C2-N3	6.80	118.68	114.60	1	4
1	Y	13	DT	C4'-C3'-C2'	-6.78	97.00	103.10	1	2
1	X	7	DG	O3'-P-O5'	-6.75	91.17	104.00	2	2
1	Y	14	DA	C4-C5-N7	-6.71	107.34	110.70	4	2
1	X	8	DC	N1-C2-O2	6.66	122.89	118.90	5	1
1	X	1	DG	N3-C4-N9	6.65	129.99	126.00	6	1
1	X	5	DT	C5-C6-N1	-6.64	119.72	123.70	4	2
1	X	5	DT	N1-C2-N3	6.64	118.58	114.60	3	2
1	X	1	DG	C1'-O4'-C4'	-6.62	103.48	110.10	4	1
1	X	2	DC	C5-C4-N4	-6.59	115.58	120.20	2	1
1	Y	9	DG	C1'-O4'-C4'	-6.59	103.51	110.10	6	1
1	Y	13	DT	O4'-C4'-C3'	6.59	109.95	106.00	2	2
1	Y	9	DG	N1-C6-O6	-6.52	115.99	119.90	2	1
1	Y	13	DT	P-O3'-C3'	6.49	127.49	119.70	3	1
1	Y	16	DC	C3'-C2'-C1'	-6.48	94.72	102.50	5	1
1	Y	15	DG	C8-N9-C1'	6.46	135.40	127.00	6	1
1	X	4	DA	N3-C4-N9	6.44	132.55	127.40	5	1
1	X	5	DT	N1-C1'-C2'	6.41	124.77	112.60	2	1
1	Y	15	DG	N3-C2-N2	-6.39	115.43	119.90	5	2
1	Y	14	DA	N3-C4-N9	-6.36	122.31	127.40	3	1
1	X	7	DG	N1-C2-N2	6.34	121.90	116.20	5	1
1	Y	9	DG	C6-C5-N7	6.31	134.19	130.40	5	1
1	X	6	DA	P-O3'-C3'	6.30	127.26	119.70	2	2
1	Y	15	DG	N3-C4-N9	6.26	129.76	126.00	1	2
1	X	7	DG	N1-C2-N3	6.25	127.65	123.90	1	2
1	Y	10	DC	C1'-O4'-C4'	6.25	116.34	110.10	2	1
1	X	7	DG	C6-C5-N7	6.22	134.13	130.40	3	1
1	X	7	DG	C6-N1-C2	-6.20	121.38	125.10	2	3
1	Y	13	DT	O5'-P-OP1	-6.18	100.14	105.70	2	1

Continued on next page...

Continued from previous page...

Mol	Chain	Res	Type	Atoms	Z	Observed(°)	Ideal(°)	Models	
								Worst	Total
1	Y	9	DG	C5-C6-N1	-6.18	108.41	111.50	1	2
1	Y	11	DT	N3-C4-C5	6.14	118.89	115.20	2	2
1	X	1	DG	N7-C8-N9	6.11	116.16	113.10	3	1
1	X	4	DA	C1'-O4'-C4'	-6.10	104.00	110.10	4	1
1	X	4	DA	C5-C6-N6	6.09	128.57	123.70	6	1
1	X	1	DG	N9-C4-C5	6.06	107.82	105.40	5	2
1	X	5	DT	C5'-C4'-C3'	6.05	124.99	114.10	2	1
1	X	8	DC	C4'-C3'-C2'	-6.05	97.66	103.10	3	1
1	Y	13	DT	C1'-O4'-C4'	-6.04	104.06	110.10	6	1
1	Y	9	DG	C2-N3-C4	6.04	114.92	111.90	5	1
1	X	3	DT	C5-C6-N1	-6.04	120.08	123.70	1	3
1	Y	16	DC	N1-C2-N3	6.03	123.42	119.20	5	1
1	Y	11	DT	P-O3'-C3'	6.03	126.93	119.70	3	1
1	X	7	DG	C4-C5-C6	-6.01	115.20	118.80	3	1
1	Y	14	DA	O3'-P-O5'	6.00	115.40	104.00	6	1
1	Y	11	DT	C1'-O4'-C4'	-6.00	104.10	110.10	4	1
1	X	7	DG	C5-N7-C8	-5.98	101.31	104.30	1	1
1	X	5	DT	C6-N1-C1'	5.97	129.35	120.40	1	1
1	Y	14	DA	C1'-O4'-C4'	-5.96	104.14	110.10	2	2
1	Y	9	DG	C5'-C4'-O4'	5.94	120.59	109.30	1	1
1	X	5	DT	O4'-C1'-C2'	-5.92	101.17	105.90	5	2
1	X	7	DG	O4'-C1'-N9	5.91	112.14	108.00	4	2
1	X	2	DC	O3'-P-O5'	-5.91	92.78	104.00	4	1
1	Y	13	DT	N1-C2-O2	5.90	127.82	123.10	6	2
1	Y	9	DG	C5'-C4'-C3'	5.88	124.68	114.10	3	1
1	X	7	DG	C4-C5-N7	-5.85	108.46	110.80	5	1
1	X	6	DA	N3-C4-C5	5.83	130.88	126.80	2	1
1	X	5	DT	C5-C4-O4	5.82	128.97	124.90	4	2
1	X	1	DG	O4'-C4'-C3'	-5.80	102.18	104.50	5	1
1	Y	16	DC	C4-C5-C6	5.79	120.30	117.40	5	1
1	X	6	DA	C5'-C4'-O4'	5.74	120.20	109.30	2	1
1	Y	11	DT	C4-C5-C6	5.73	121.44	118.00	3	2
1	Y	10	DC	C6-N1-C2	-5.72	118.01	120.30	6	1
1	Y	11	DT	N1-C2-O2	-5.68	118.56	123.10	3	1
1	Y	10	DC	P-O3'-C3'	5.68	126.51	119.70	3	1
1	X	3	DT	N1-C1'-C2'	5.62	123.28	112.60	2	1
1	X	7	DG	C4'-C3'-C2'	-5.60	98.06	103.10	3	2
1	X	8	DC	O4'-C1'-C2'	-5.57	101.44	105.90	2	1
1	Y	15	DG	C3'-C2'-C1'	-5.56	95.83	102.50	5	1
1	X	3	DT	O3'-P-O5'	-5.56	93.44	104.00	4	1
1	X	4	DA	N3-C4-C5	-5.54	122.92	126.80	6	1

Continued on next page...

Continued from previous page...

Mol	Chain	Res	Type	Atoms	Z	Observed(°)	Ideal(°)	Models	
								Worst	Total
1	Y	15	DG	C2-N3-C4	-5.53	109.14	111.90	3	2
1	Y	10	DC	N1-C2-N3	5.48	123.04	119.20	6	1
1	Y	12	DA	C6-N1-C2	-5.48	115.31	118.60	4	2
1	X	6	DA	N3-C4-N9	-5.47	123.02	127.40	5	1
1	X	1	DG	N1-C2-N3	5.46	127.18	123.90	6	1
1	X	6	DA	C2-N3-C4	-5.43	107.89	110.60	2	1
1	X	2	DC	O5'-P-OP2	-5.43	100.81	105.70	1	1
1	Y	14	DA	P-O3'-C3'	5.43	126.21	119.70	5	1
1	X	5	DT	N3-C4-C5	-5.41	111.96	115.20	6	1
1	X	7	DG	O4'-C1'-C2'	5.37	110.20	105.90	4	1
1	X	3	DT	N3-C4-C5	5.37	118.42	115.20	6	2
1	X	5	DT	C4'-C3'-C2'	5.35	107.92	103.10	1	1
1	X	2	DC	OP1-P-O3'	5.33	116.92	105.20	6	1
1	X	8	DC	C1'-O4'-C4'	-5.31	104.79	110.10	1	1
1	X	1	DG	C8-N9-C1'	5.30	133.90	127.00	1	1
1	Y	11	DT	C2-N3-C4	-5.30	124.02	127.20	2	1
1	X	6	DA	C3'-C2'-C1'	5.29	108.85	102.50	5	1
1	X	1	DG	C4-N9-C1'	-5.29	119.62	126.50	1	1
1	X	7	DG	C5-C6-O6	5.25	131.75	128.60	6	1
1	X	1	DG	P-O3'-C3'	5.25	126.00	119.70	3	1
1	X	1	DG	C4-C5-N7	-5.23	108.71	110.80	3	1
1	X	2	DC	C5'-C4'-O4'	5.18	119.14	109.30	5	1
1	X	3	DT	C1'-O4'-C4'	-5.16	104.94	110.10	1	1
1	X	2	DC	N1-C2-N3	5.14	122.80	119.20	2	1
1	X	8	DC	C4-C5-C6	5.14	119.97	117.40	2	2
1	Y	16	DC	C4'-C3'-C2'	5.13	107.71	103.10	5	1
1	X	5	DT	P-O3'-C3'	5.12	125.85	119.70	5	1
1	Y	12	DA	O4'-C1'-C2'	5.11	109.99	105.90	1	1
1	Y	14	DA	C3'-C2'-C1'	-5.11	96.37	102.50	2	1
1	Y	11	DT	O5'-P-OP1	5.06	116.78	110.70	3	1
1	X	3	DT	OP2-P-O3'	5.06	116.33	105.20	6	1
1	Y	14	DA	C4'-C3'-C2'	-5.05	98.56	103.10	1	1
1	X	1	DG	N1-C2-N2	-5.05	111.66	116.20	5	1
1	X	3	DT	C3'-C2'-C1'	5.04	108.55	102.50	6	1

There are no chirality outliers.

All unique planar outliers are listed below. They are sorted by the frequency of occurrence in the ensemble.

Mol	Chain	Res	Type	Group	Models (Total)
1	Y	12	DA	Sidechain	6

Continued on next page...

Continued from previous page...

Mol	Chain	Res	Type	Group	Models (Total)
1	X	3	DT	Sidechain	5
1	X	4	DA	Sidechain	5
1	X	5	DT	Sidechain	5
1	Y	15	DG	Sidechain	5
1	X	7	DG	Sidechain	4
1	Y	9	DG	Sidechain	4
1	Y	10	DC	Sidechain	4
1	Y	13	DT	Sidechain	4
1	X	8	DC	Sidechain	3
1	X	1	DG	Sidechain	3
1	X	2	DC	Sidechain	2
1	Y	16	DC	Sidechain	2
1	Y	14	DA	Sidechain	2
1	Y	11	DT	Sidechain	1

6.2 Too-close contacts [i](#)

In the following table, the Non-H and H(model) columns list the number of non-hydrogen atoms and hydrogen atoms in each chain respectively. The H(added) column lists the number of hydrogen atoms added and optimized by MolProbity. The Clashes column lists the number of clashes averaged over the ensemble.

Mol	Chain	Non-H	H(model)	H(added)	Clashes
1	X	161	92	88	0±0
1	Y	161	92	89	0±0
All	All	2520	1584	1064	3

The all-atom clashscore is defined as the number of clashes found per 1000 atoms (including hydrogen atoms). The all-atom clashscore for this structure is 1.

All unique clashes are listed below, sorted by their clash magnitude.

Atom-1	Atom-2	Clash(Å)	Distance(Å)	Models	
				Worst	Total
1:X:3:DT:C4	1:X:4:DA:C6	0.43	3.07	1	1
1:X:1:DG:H1'	1:X:2:DC:C5	0.42	2.50	3	1
1:Y:9:DG:H1'	1:Y:10:DC:C6	0.41	2.50	6	1

6.3 Torsion angles [i](#)

6.3.1 Protein backbone [i](#)

There are no protein molecules in this entry.

6.3.2 Protein sidechains [i](#)

There are no protein molecules in this entry.

6.3.3 RNA [i](#)

There are no RNA molecules in this entry.

6.4 Non-standard residues in protein, DNA, RNA chains [i](#)

There are no non-standard protein/DNA/RNA residues in this entry.

6.5 Carbohydrates [i](#)

There are no monosaccharides in this entry.

6.6 Ligand geometry [i](#)

1 ligand is modelled in this entry.

In the following table, the Counts columns list the number of bonds for which Mogul statistics could be retrieved, the number of bonds that are observed in the model and the number of bonds that are defined in the chemical component dictionary. The Link column lists molecule types, if any, to which the group is linked. The Z score for a bond length is the number of standard deviations the observed value is removed from the expected value. A bond length with $|Z| > 2$ is considered an outlier worth inspection. RMSZ is the average root-mean-square of all Z scores of the bond lengths.

Mol	Type	Chain	Res	Link	Bond lengths		
					Counts	RMSZ	#Z>2
2	4JF	Y	101	-	100,109,109	3.36±0.08	31±3 (31±3%)

In the following table, the Counts columns list the number of angles for which Mogul statistics could be retrieved, the number of angles that are observed in the model and the number of angles that are defined in the chemical component dictionary. The Link column lists molecule types, if any, to which the group is linked. The Z score for a bond angle is the number of standard

deviations the observed value is removed from the expected value. A bond angle with $|Z| > 2$ is considered an outlier worth inspection. RMSZ is the average root-mean-square of all Z scores of the bond angles.

Mol	Type	Chain	Res	Link	Bond angles		
					Counts	RMSZ	#Z>2
2	4JF	Y	101	-	112,172,172	5.04±0.09	32±4 (29±3%)

In the following table, the Chirals column lists the number of chiral outliers, the number of chiral centers analysed, the number of these observed in the model and the number defined in the chemical component dictionary. Similar counts are reported in the Torsions and Rings columns. '-' means no outliers of that kind were identified.

Mol	Type	Chain	Res	Link	Chirals	Torsions	Rings
2	4JF	Y	101	-	3±0,3,45,47	0±0,40,245,245	0±0,12,12,12

All unique bond outliers are listed below. They are sorted according to the Z-score of the worst occurrence in the ensemble.

Mol	Chain	Res	Type	Atoms	Z	Observed(Å)	Ideal(Å)	Models	
								Worst	Total
2	Y	101	4JF	N76-N75	20.38	1.11	1.41	1	6
2	Y	101	4JF	N24-N23	19.33	1.13	1.41	5	6
2	Y	101	4JF	C20-C19	7.39	1.34	1.51	3	6
2	Y	101	4JF	C20-C21	7.19	1.39	1.50	1	4
2	Y	101	4JF	C63-C64	6.26	1.37	1.49	5	6
2	Y	101	4JF	C31-C28	5.58	1.63	1.52	2	6
2	Y	101	4JF	C66-C65	5.57	1.37	1.53	5	6
2	Y	101	4JF	C11-C9	5.21	1.34	1.46	6	6
2	Y	101	4JF	C46-C45	5.07	1.56	1.50	5	3
2	Y	101	4JF	O55-C46	5.00	1.51	1.42	4	4
2	Y	101	4JF	C66-C67	4.99	1.40	1.51	3	6
2	Y	101	4JF	C80-C81	4.78	1.59	1.53	4	2
2	Y	101	4JF	C39-C41	4.76	1.61	1.51	4	2
2	Y	101	4JF	C6A-C7A	4.50	1.59	1.53	1	3
2	Y	101	4JF	C48-C42	4.48	1.61	1.52	5	5
2	Y	101	4JF	O2D-C3D	4.35	1.52	1.42	4	2
2	Y	101	4JF	O2D-C28	4.21	1.52	1.46	1	3
2	Y	101	4JF	C44-C41	4.08	1.33	1.44	4	5
2	Y	101	4JF	C21-N23	3.86	1.28	1.34	1	3
2	Y	101	4JF	C5A-C4A	3.81	1.59	1.51	4	4
2	Y	101	4JF	O1D-C42	3.76	1.52	1.46	3	2
2	Y	101	4JF	O6B-C6A	3.72	1.35	1.43	2	2
2	Y	101	4JF	C56-N75	3.64	1.29	1.34	6	3
2	Y	101	4JF	C57-C58	3.54	1.35	1.52	4	6

Continued on next page...

Continued from previous page...

Mol	Chain	Res	Type	Atoms	Z	Observed(Å)	Ideal(Å)	Models	
								Worst	Total
2	Y	101	4JF	C67-C68	3.50	1.43	1.37	1	1
2	Y	101	4JF	O62-C60	3.44	1.16	1.22	5	1
2	Y	101	4JF	C29-C20	3.42	1.49	1.55	6	4
2	Y	101	4JF	O5B-C4A	3.37	1.50	1.42	2	1
2	Y	101	4JF	C7F-C9F	3.33	1.58	1.52	5	1
2	Y	101	4JF	C28-C29	3.30	1.64	1.53	5	2
2	Y	101	4JF	C5H-C2G	3.27	1.59	1.51	5	1
2	Y	101	4JF	C56-C45	3.23	1.31	1.36	3	1
2	Y	101	4JF	C5E-C9D	3.20	1.59	1.51	6	4
2	Y	101	4JF	C59-C67	3.18	1.55	1.47	5	2
2	Y	101	4JF	C79-C78	3.14	1.57	1.51	2	1
2	Y	101	4JF	C39-C26	3.08	1.63	1.55	6	4
2	Y	101	4JF	C6-C5	3.08	1.34	1.39	4	1
2	Y	101	4JF	C7F-C6F	3.08	1.57	1.51	2	5
2	Y	101	4JF	O73-C68	3.06	1.40	1.32	4	2
2	Y	101	4JF	C6-C1	3.00	1.44	1.38	3	2
2	Y	101	4JF	C7C-C8A	2.94	1.58	1.51	1	1
2	Y	101	4JF	C1-C2	2.92	1.44	1.39	6	1
2	Y	101	4JF	O1D-C6F	2.88	1.49	1.42	4	2
2	Y	101	4JF	C51-C48	2.84	1.63	1.51	2	2
2	Y	101	4JF	C9B-N8B	2.83	1.56	1.46	5	2
2	Y	101	4JF	C0E-C9D	2.73	1.58	1.52	4	3
2	Y	101	4JF	O7G-C6F	2.73	1.49	1.42	3	1
2	Y	101	4JF	O88-C78	2.65	1.49	1.42	3	2
2	Y	101	4JF	O61-C59	2.64	1.27	1.22	2	1
2	Y	101	4JF	C4D-C6D	2.64	1.57	1.52	6	3
2	Y	101	4JF	C12-C10	2.63	1.40	1.46	1	1
2	Y	101	4JF	C3-C10	2.62	1.53	1.46	6	3
2	Y	101	4JF	C4D-C3D	2.60	1.56	1.51	1	1
2	Y	101	4JF	C3C-N8B	2.57	1.55	1.46	1	1
2	Y	101	4JF	O0H-C9F	2.55	1.50	1.43	2	3
2	Y	101	4JF	C26-C22	2.55	1.56	1.51	5	2
2	Y	101	4JF	O1F-C2F	2.54	1.51	1.42	1	3
2	Y	101	4JF	O7G-C2G	2.52	1.38	1.44	4	1
2	Y	101	4JF	C3G-C9F	2.49	1.58	1.53	2	1
2	Y	101	4JF	C81-N93	2.46	1.54	1.48	6	1
2	Y	101	4JF	O0H-C1H	2.46	1.50	1.42	5	2
2	Y	101	4JF	O5B-C8A	2.33	1.50	1.44	6	1
2	Y	101	4JF	O25-C78	2.32	1.47	1.41	4	2
2	Y	101	4JF	C0E-C6D	2.29	1.57	1.53	6	2
2	Y	101	4JF	C5A-C6A	2.29	1.56	1.52	2	2

Continued on next page...

Continued from previous page...

Mol	Chain	Res	Type	Atoms	Z	Observed(Å)	Ideal(Å)	Models	
								Worst	Total
2	Y	101	4JF	O4E-C9D	2.29	1.39	1.44	1	1
2	Y	101	4JF	C79-C80	2.24	1.56	1.52	2	1
2	Y	101	4JF	C60-C58	2.23	1.41	1.47	3	1
2	Y	101	4JF	O43-C41	2.21	1.18	1.22	2	1
2	Y	101	4JF	C4-C9	2.11	1.51	1.46	2	1
2	Y	101	4JF	O15-C5	2.09	1.40	1.36	1	1
2	Y	101	4JF	O9E-C0E	2.09	1.47	1.43	3	1
2	Y	101	4JF	C7A-N8B	2.06	1.53	1.48	3	1

All unique angle outliers are listed below. They are sorted according to the Z-score of the worst occurrence in the ensemble.

Mol	Chain	Res	Type	Atoms	Z	Observed(°)	Ideal(°)	Models	
								Worst	Total
2	Y	101	4JF	C56-N75-N76	37.04	178.24	122.20	6	6
2	Y	101	4JF	C21-N23-N24	36.93	178.06	122.20	2	6
2	Y	101	4JF	C66-C67-C68	8.58	116.45	122.30	5	5
2	Y	101	4JF	C11-C12-C21	8.56	111.50	107.35	4	4
2	Y	101	4JF	O2D-C3D-C4D	5.86	116.97	108.91	1	2
2	Y	101	4JF	O5B-C4A-C5A	5.68	102.31	110.87	1	3
2	Y	101	4JF	C60-C66-C67	5.59	125.60	107.56	4	6
2	Y	101	4JF	O73-C68-C63	5.52	122.32	113.27	2	4
2	Y	101	4JF	C5H-C2G-C3G	5.18	122.64	113.07	4	2
2	Y	101	4JF	C45-C44-C58	5.17	101.40	109.38	2	6
2	Y	101	4JF	O7G-C6F-O1D	4.94	120.37	109.56	2	3
2	Y	101	4JF	C6-C5-C4	4.63	126.13	120.17	2	3
2	Y	101	4JF	C4A-O55-C46	4.54	121.51	115.20	5	4
2	Y	101	4JF	O73-C68-C67	4.52	116.03	123.13	2	3
2	Y	101	4JF	O4E-C9D-C0E	4.51	101.42	109.52	5	2
2	Y	101	4JF	O4E-C3D-C4D	4.50	104.09	110.87	1	4
2	Y	101	4JF	C44-C45-C56	4.49	112.42	106.64	3	6
2	Y	101	4JF	C1-C6-C5	4.43	115.95	120.50	3	4
2	Y	101	4JF	C3-C4-C5	4.40	112.85	119.30	2	2
2	Y	101	4JF	C1H-O0H-C9F	4.40	125.87	114.03	4	1
2	Y	101	4JF	O7G-C6F-C7F	4.37	117.47	110.87	4	5
2	Y	101	4JF	O6B-C6A-C5A	4.28	99.32	109.94	5	2
2	Y	101	4JF	C51-C48-C42	4.20	122.29	115.52	3	4
2	Y	101	4JF	O88-C78-C79	4.17	117.16	110.87	3	3
2	Y	101	4JF	C20-C19-C11	4.11	104.48	109.02	4	5
2	Y	101	4JF	O1D-C6F-C7F	3.94	114.33	108.91	3	1
2	Y	101	4JF	O38-C22-C19	3.92	129.66	121.87	6	4
2	Y	101	4JF	O38-C22-C26	3.82	129.06	121.21	4	4

Continued on next page...

Continued from previous page...

Mol	Chain	Res	Type	Atoms	Z	Observed(°)	Ideal(°)	Models	
								Worst	Total
2	Y	101	4JF	C31-C28-C29	3.74	122.15	111.41	4	2
2	Y	101	4JF	O14-C10-C12	3.69	128.83	122.35	3	1
2	Y	101	4JF	O7G-C2G-C3G	3.62	103.03	109.52	1	4
2	Y	101	4JF	C6D-C0E-C9D	3.54	104.06	110.04	4	1
2	Y	101	4JF	C6-C1-C2	3.43	116.98	120.50	1	2
2	Y	101	4JF	O62-C60-C58	3.39	128.60	121.87	1	2
2	Y	101	4JF	C0A-N93-C96	3.37	120.33	110.38	1	1
2	Y	101	4JF	O55-C4A-C5A	3.35	114.87	108.41	4	3
2	Y	101	4JF	O13-C9-C4	3.34	115.68	121.99	4	3
2	Y	101	4JF	O25-C78-C79	3.32	101.98	108.41	1	2
2	Y	101	4JF	O6B-C6A-C7A	3.27	118.36	110.08	2	1
2	Y	101	4JF	O94-C80-C81	3.27	118.34	110.08	3	2
2	Y	101	4JF	C45-C56-N75	3.21	123.44	126.35	2	2
2	Y	101	4JF	O8G-C3G-C9F	3.17	117.16	109.30	4	3
2	Y	101	4JF	O25-C78-O88	3.15	120.03	109.86	2	1
2	Y	101	4JF	O94-C80-C79	3.14	102.15	109.94	3	4
2	Y	101	4JF	C28-O2D-C3D	3.14	112.92	119.24	3	3
2	Y	101	4JF	O1D-C42-C46	3.13	117.74	110.45	6	1
2	Y	101	4JF	O15-C5-C4	3.03	115.47	121.14	2	1
2	Y	101	4JF	C7F-C9F-C3G	2.94	116.28	110.77	5	1
2	Y	101	4JF	O4E-C3D-O2D	2.93	115.97	109.56	2	2
2	Y	101	4JF	O5B-C8A-C7C	2.85	100.56	106.70	6	1
2	Y	101	4JF	C5E-C9D-C0E	2.83	107.84	113.07	4	1
2	Y	101	4JF	O43-C41-C39	2.83	115.39	121.21	5	1
2	Y	101	4JF	C3D-C4D-C6D	2.82	116.56	111.11	1	1
2	Y	101	4JF	C9F-C3G-C2G	2.76	114.73	110.04	4	3
2	Y	101	4JF	C29-C20-C21	2.74	127.08	114.03	1	4
2	Y	101	4JF	C42-O1D-C6F	2.69	124.67	119.24	2	1
2	Y	101	4JF	O61-C59-C67	2.65	127.13	121.87	1	2
2	Y	101	4JF	C5-C4-C9	2.63	117.61	121.47	1	2
2	Y	101	4JF	O1F-C6D-C0E	2.62	101.39	108.87	2	1
2	Y	101	4JF	O71-C65-C64	2.58	112.87	121.96	6	2
2	Y	101	4JF	O7G-C2G-C5H	2.53	101.24	106.70	4	1
2	Y	101	4JF	C3-C4-C9	2.52	124.06	119.64	3	2
2	Y	101	4JF	C78-O88-C77	2.51	107.09	113.84	3	1
2	Y	101	4JF	O2D-C28-C29	2.49	107.85	111.08	4	2
2	Y	101	4JF	C6F-C7F-C9F	2.48	115.89	111.11	2	1
2	Y	101	4JF	O17-C2-C3	2.44	125.71	121.14	6	2
2	Y	101	4JF	C3C-N8B-C7A	2.43	119.36	113.59	2	2
2	Y	101	4JF	O8G-C3G-C2G	2.40	104.35	109.67	6	1
2	Y	101	4JF	C56-C57-C58	2.37	111.97	101.16	1	4

Continued on next page...

Continued from previous page...

Mol	Chain	Res	Type	Atoms	Z	Observed(°)	Ideal(°)	Models	
								Worst	Total
2	Y	101	4JF	O9E-C0E-C6D	2.34	103.50	109.30	1	1
2	Y	101	4JF	C3-C10-C12	2.32	112.21	116.93	3	1
2	Y	101	4JF	C3D-O4E-C9D	2.26	119.93	113.84	1	2
2	Y	101	4JF	C11-C12-C10	2.19	125.75	121.89	2	1
2	Y	101	4JF	C28-C26-C22	2.16	104.11	109.85	6	1
2	Y	101	4JF	O4E-C9D-C5E	2.13	102.11	106.70	4	2
2	Y	101	4JF	O9E-C0E-C9D	2.09	105.03	109.67	5	1
2	Y	101	4JF	C4D-C6D-C0E	2.09	106.86	110.77	6	1
2	Y	101	4JF	O55-C4A-O5B	2.07	116.54	109.86	6	1
2	Y	101	4JF	C4-C3-C2	2.05	122.30	119.30	4	1
2	Y	101	4JF	C2F-O1F-C6D	2.05	119.55	114.03	3	1
2	Y	101	4JF	O17-C2-C1	2.04	113.80	119.33	3	1

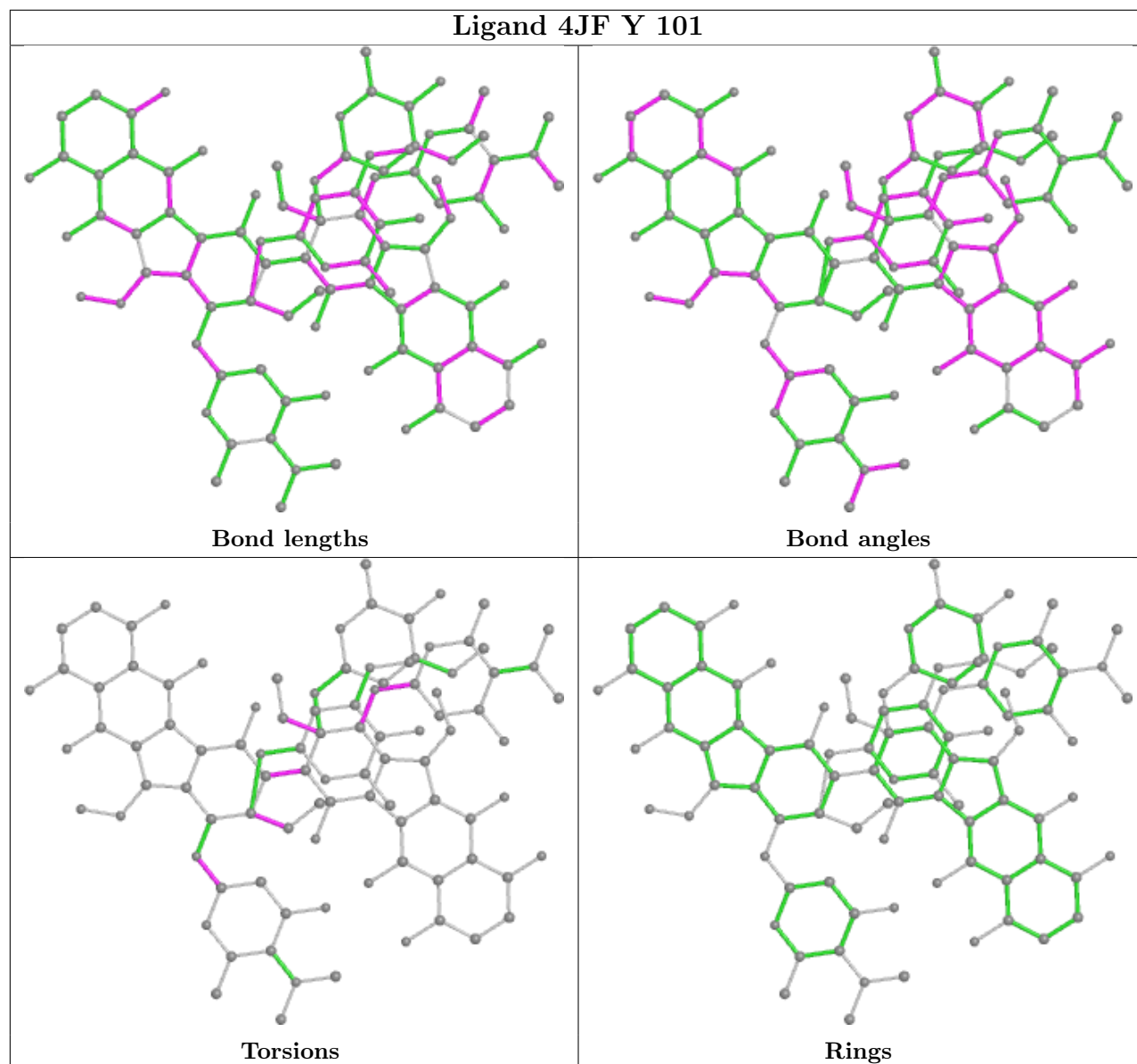
All unique chiral outliers are listed below. They are sorted by the frequency of occurrence in the ensemble.

Mol	Chain	Res	Type	Atoms	Models (Total)
2	Y	101	4JF	C57	6
2	Y	101	4JF	C20	6
2	Y	101	4JF	C66	6

There are no torsion outliers.

There are no ring outliers.

The following is a two-dimensional graphical depiction of Mogul quality analysis of bond lengths, bond angles, torsion angles, and ring geometry for all instances of the Ligand of Interest. In addition, ligands with molecular weight > 250 and outliers as shown on the validation Tables will also be included. For torsion angles, if less than 5% of the Mogul distribution of torsion angles is within 10 degrees of the torsion angle in question, then that torsion angle is considered an outlier. Any bond that is central to one or more torsion angles identified as an outlier by Mogul will be highlighted in the graph. For rings, the root-mean-square deviation (RMSD) between the ring in question and similar rings identified by Mogul is calculated over all ring torsion angles. If the average RMSD is greater than 60 degrees and the minimal RMSD between the ring in question and any Mogul-identified rings is also greater than 60 degrees, then that ring is considered an outlier. The outliers are highlighted in purple. The color gray indicates Mogul did not find sufficient equivalents in the CSD to analyse the geometry.



6.7 Other polymers [i](#)

There are no such molecules in this entry.

6.8 Polymer linkage issues [i](#)

There are no chain breaks in this entry.

7 Chemical shift validation [i](#)

The completeness of assignment taking into account all chemical shift lists is 48% for the well-defined parts and 48% for the entire structure.

7.1 Chemical shift list 1

File name: working_cs.cif

Chemical shift list name: *assigned_chem_shift_list_1*

7.1.1 Bookkeeping [i](#)

The following table shows the results of parsing the chemical shift list and reports the number of nuclei with statistically unusual chemical shifts.

Total number of shifts	236
Number of shifts mapped to atoms	236
Number of unparsed shifts	0
Number of shifts with mapping errors	0
Number of shifts with mapping warnings	0
Number of shift outliers (ShiftChecker)	0

7.1.2 Chemical shift referencing [i](#)

No chemical shift referencing corrections were calculated (not enough data).

7.1.3 Completeness of resonance assignments [i](#)

The following table shows the completeness of the chemical shift assignments for the well-defined regions of the structure. The overall completeness is 48%, i.e. 151 atoms were assigned a chemical shift out of a possible 316. 0 out of 0 assigned methyl groups (LEU and VAL) were assigned stereospecifically.

	Total	¹ H	¹³ C	¹⁵ N
Backbone	0/0 (—%)	0/0 (—%)	0/0 (—%)	0/0 (—%)
Sidechain	0/0 (—%)	0/0 (—%)	0/0 (—%)	0/0 (—%)
Aromatic	0/0 (—%)	0/0 (—%)	0/0 (—%)	0/0 (—%)
Overall	151/316 (48%)	151/188 (80%)	0/108 (0%)	0/20 (0%)

The following table shows the completeness of the chemical shift assignments for the full structure. The overall completeness is 48%, i.e. 151 atoms were assigned a chemical shift out of a possible 316. 0 out of 0 assigned methyl groups (LEU and VAL) were assigned stereospecifically.

	Total	¹H	¹³C	¹⁵N
Backbone	0/0 (—%)	0/0 (—%)	0/0 (—%)	0/0 (—%)
Sidechain	0/0 (—%)	0/0 (—%)	0/0 (—%)	0/0 (—%)
Aromatic	0/0 (—%)	0/0 (—%)	0/0 (—%)	0/0 (—%)
Overall	151/316 (48%)	151/188 (80%)	0/108 (0%)	0/20 (0%)

7.1.4 Statistically unusual chemical shifts [i](#)

There are no statistically unusual chemical shifts.

7.1.5 Random Coil Index (RCI) plots [i](#)

No *random coil index* (RCI) plot could be generated from the current chemical shift list (assigned_chem_shift_list_1). RCI is only applicable to proteins.