



# wwPDB EM Validation Summary Report ⓘ

Mar 27, 2026 – 01:38 AM UTC

PDB ID : 9NBD / pdb\_00009nbd  
EMDB ID : EMD-49227  
Title : AUGMIN Dimer  
Authors : Ashaduzzaman, M.; Al-Bassam, J.; Taheri, A.  
Deposited on : 2025-02-13  
Resolution : 8.10 Å(reported)

This is a wwPDB EM Validation Summary Report for a publicly released PDB entry.

We welcome your comments at [validation@mail.wwpdb.org](mailto:validation@mail.wwpdb.org)

A user guide is available at

<https://www.wwpdb.org/validation/2017/EMValidationReportHelp>

with specific help available everywhere you see the ⓘ symbol.

The types of validation reports are described at

<http://www.wwpdb.org/validation/2017/FAQs#types>.

---

The following versions of software and data (see [references ⓘ](#)) were used in the production of this report:

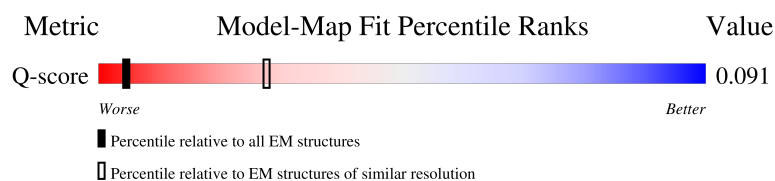
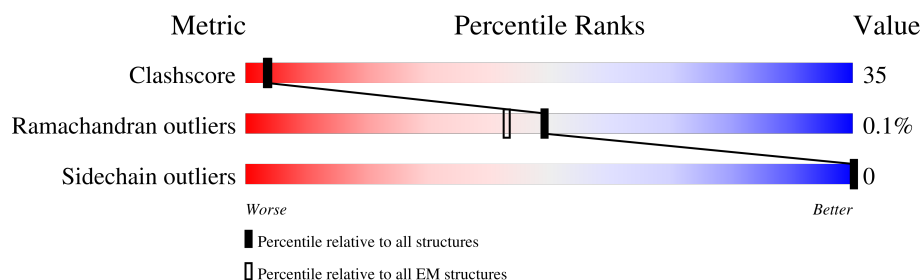
EMDB validation analysis : 0.0.1.dev132  
MolProbity : 4-5-2 with Phenix2.0  
Percentile statistics : 20250101.v01 (using entries in the PDB archive January 1st 2025)  
EM percentile statistics : 202505.v01 (Using data in the EMDB archive up until May 2025)  
MapQ : 1.9.13  
Ideal geometry (proteins) : Engh & Huber (2001)  
Ideal geometry (DNA, RNA) : Parkinson et al. (1996)  
Validation Pipeline (wwPDB-VP) : 2.49

# 1 Overall quality at a glance

The following experimental techniques were used to determine the structure:  
*ELECTRON MICROSCOPY*

The reported resolution of this entry is 8.10 Å.

Percentile scores (ranging between 0-100) for global validation metrics of the entry are shown in the following graphic. The table shows the number of entries on which the scores are based.



Metric	Whole archive (#Entries)	EM structures (#Entries)	Similar EM resolution (#Entries, resolution range(Å))
Clashscore	229148	23984	-
Ramachandran outliers	224038	23583	-
Sidechain outliers	223484	23102	-
Q-score	-	25397	342 ( 7.60 - 8.60 )

The table below summarises the geometric issues observed across the polymeric chains and their fit to the map. The red, orange, yellow and green segments of the bar indicate the fraction of residues that contain outliers for  $\geq 3$ , 2, 1 and 0 types of geometric quality criteria respectively. A grey segment represents the fraction of residues that are not modelled. The numeric value for each fraction is indicated below the corresponding segment, with a dot representing fractions  $\leq 5\%$ . The upper red bar (where present) indicates the fraction of residues that have poor fit to the EM map (all-atom inclusion  $< 40\%$ ). The numeric value is given above the bar.

Mol	Chain	Length	Quality of chain
1	A	298	<div> <div>28%</div> <div>38%</div> <div>56%</div> <div>6%</div> </div>
1	M	298	<div> <div>24%</div> <div>36%</div> <div>58%</div> <div>6%</div> </div>
2	D	423	<div> <div>24%</div> <div>35%</div> <div>51%</div> <div>14%</div> </div>
2	N	423	<div> <div>22%</div> <div>39%</div> <div>47%</div> <div>14%</div> </div>

*Continued on next page...*

Continued from previous page...

Mol	Chain	Length	Quality of chain
3	E	747	<div><div></div><div>12%</div><div>23%</div><div>31%</div><div>46%</div></div>
3	O	747	<div><div></div><div>14%</div><div>23%</div><div>31%</div><div>46%</div></div>
4	C	617	<div><div></div><div>25%</div><div>32%</div><div>29%</div><div>39%</div></div>
4	P	617	<div><div></div><div>25%</div><div>31%</div><div>29%</div><div>40%</div></div>

## 2 Entry composition [i](#)

There are 4 unique types of molecules in this entry. The entry contains 22553 atoms, of which 0 are hydrogens and 0 are deuteriums.

In the tables below, the AltConf column contains the number of residues with at least one atom in alternate conformation and the Trace column contains the number of residues modelled with at most 2 atoms.

- Molecule 1 is a protein called AUGMIN subunit 1.

Mol	Chain	Residues	Atoms					AltConf	Trace
1	A	280	Total	C	N	O	S	0	0
			2235	1399	389	439	8		
1	M	280	Total	C	N	O	S	0	0
			2235	1399	389	439	8		

There are 2 discrepancies between the modelled and reference sequences:

Chain	Residue	Modelled	Actual	Comment	Reference
A	?	-	GLN	deletion	UNP F4IK01
M	?	-	GLN	deletion	UNP F4IK01

- Molecule 2 is a protein called AUGMIN subunit 4.

Mol	Chain	Residues	Atoms					AltConf	Trace
2	D	363	Total	C	N	O	S	0	0
			2890	1804	505	566	15		
2	N	363	Total	C	N	O	S	0	0
			2890	1804	505	566	15		

- Molecule 3 is a protein called AUGMIN subunit 5.

Mol	Chain	Residues	Atoms					AltConf	Trace
3	E	405	Total	C	N	O	S	0	0
			3236	2009	587	627	13		
3	O	405	Total	C	N	O	S	0	0
			3236	2009	587	627	13		

There are 98 discrepancies between the modelled and reference sequences:

Chain	Residue	Modelled	Actual	Comment	Reference
E	?	-	LEU	deletion	UNP Q9FMB4
E	?	-	SER	deletion	UNP Q9FMB4
E	?	-	TYR	deletion	UNP Q9FMB4

*Continued on next page...*

*Continued from previous page...*

Chain	Residue	Modelled	Actual	Comment	Reference
E	?	-	GLN	deletion	UNP Q9FMB4
E	?	-	PHE	deletion	UNP Q9FMB4
E	?	-	ASN	deletion	UNP Q9FMB4
E	?	-	GLY	deletion	UNP Q9FMB4
E	?	-	ASN	deletion	UNP Q9FMB4
E	?	-	GLY	deletion	UNP Q9FMB4
E	?	-	LYS	deletion	UNP Q9FMB4
E	?	-	ILE	deletion	UNP Q9FMB4
E	?	-	GLY	deletion	UNP Q9FMB4
E	?	-	THR	deletion	UNP Q9FMB4
E	?	-	ASP	deletion	UNP Q9FMB4
E	?	-	THR	deletion	UNP Q9FMB4
E	?	-	HIS	deletion	UNP Q9FMB4
E	?	-	PHE	deletion	UNP Q9FMB4
E	?	-	GLN	deletion	UNP Q9FMB4
E	?	-	GLY	deletion	UNP Q9FMB4
E	?	-	LEU	deletion	UNP Q9FMB4
E	?	-	GLU	deletion	UNP Q9FMB4
E	?	-	SER	deletion	UNP Q9FMB4
E	?	-	MET	deletion	UNP Q9FMB4
E	?	-	GLY	deletion	UNP Q9FMB4
E	?	-	ALA	deletion	UNP Q9FMB4
E	?	-	ASN	deletion	UNP Q9FMB4
E	?	-	GLY	deletion	UNP Q9FMB4
E	?	-	SER	deletion	UNP Q9FMB4
E	?	-	THR	deletion	UNP Q9FMB4
E	?	-	GLY	deletion	UNP Q9FMB4
E	?	-	PRO	deletion	UNP Q9FMB4
E	?	-	GLU	deletion	UNP Q9FMB4
E	?	-	ALA	deletion	UNP Q9FMB4
E	?	-	VAL	deletion	UNP Q9FMB4
E	?	-	ALA	deletion	UNP Q9FMB4
E	?	-	TYR	deletion	UNP Q9FMB4
E	?	-	ALA	deletion	UNP Q9FMB4
E	?	-	GLU	deletion	UNP Q9FMB4
E	?	-	LYS	deletion	UNP Q9FMB4
E	?	-	ASN	deletion	UNP Q9FMB4
E	?	-	ALA	deletion	UNP Q9FMB4
E	?	-	ALA	deletion	UNP Q9FMB4
E	?	-	LEU	deletion	UNP Q9FMB4
E	?	-	LEU	deletion	UNP Q9FMB4
E	?	-	THR	deletion	UNP Q9FMB4

*Continued on next page...*

*Continued from previous page...*

Chain	Residue	Modelled	Actual	Comment	Reference
E	?	-	ALA	deletion	UNP Q9FMB4
E	?	-	ARG	deletion	UNP Q9FMB4
E	?	-	ALA	deletion	UNP Q9FMB4
E	?	-	GLY	deletion	UNP Q9FMB4
O	?	-	LEU	deletion	UNP Q9FMB4
O	?	-	SER	deletion	UNP Q9FMB4
O	?	-	TYR	deletion	UNP Q9FMB4
O	?	-	GLN	deletion	UNP Q9FMB4
O	?	-	PHE	deletion	UNP Q9FMB4
O	?	-	ASN	deletion	UNP Q9FMB4
O	?	-	GLY	deletion	UNP Q9FMB4
O	?	-	ASN	deletion	UNP Q9FMB4
O	?	-	GLY	deletion	UNP Q9FMB4
O	?	-	LYS	deletion	UNP Q9FMB4
O	?	-	ILE	deletion	UNP Q9FMB4
O	?	-	GLY	deletion	UNP Q9FMB4
O	?	-	THR	deletion	UNP Q9FMB4
O	?	-	ASP	deletion	UNP Q9FMB4
O	?	-	THR	deletion	UNP Q9FMB4
O	?	-	HIS	deletion	UNP Q9FMB4
O	?	-	PHE	deletion	UNP Q9FMB4
O	?	-	GLN	deletion	UNP Q9FMB4
O	?	-	GLY	deletion	UNP Q9FMB4
O	?	-	LEU	deletion	UNP Q9FMB4
O	?	-	GLU	deletion	UNP Q9FMB4
O	?	-	SER	deletion	UNP Q9FMB4
O	?	-	MET	deletion	UNP Q9FMB4
O	?	-	GLY	deletion	UNP Q9FMB4
O	?	-	ALA	deletion	UNP Q9FMB4
O	?	-	ASN	deletion	UNP Q9FMB4
O	?	-	GLY	deletion	UNP Q9FMB4
O	?	-	SER	deletion	UNP Q9FMB4
O	?	-	THR	deletion	UNP Q9FMB4
O	?	-	GLY	deletion	UNP Q9FMB4
O	?	-	PRO	deletion	UNP Q9FMB4
O	?	-	GLU	deletion	UNP Q9FMB4
O	?	-	ALA	deletion	UNP Q9FMB4
O	?	-	VAL	deletion	UNP Q9FMB4
O	?	-	ALA	deletion	UNP Q9FMB4
O	?	-	TYR	deletion	UNP Q9FMB4
O	?	-	ALA	deletion	UNP Q9FMB4
O	?	-	GLU	deletion	UNP Q9FMB4

*Continued on next page...*

*Continued from previous page...*

Chain	Residue	Modelled	Actual	Comment	Reference
O	?	-	LYS	deletion	UNP Q9FMB4
O	?	-	ASN	deletion	UNP Q9FMB4
O	?	-	ALA	deletion	UNP Q9FMB4
O	?	-	ALA	deletion	UNP Q9FMB4
O	?	-	LEU	deletion	UNP Q9FMB4
O	?	-	LEU	deletion	UNP Q9FMB4
O	?	-	THR	deletion	UNP Q9FMB4
O	?	-	ALA	deletion	UNP Q9FMB4
O	?	-	ARG	deletion	UNP Q9FMB4
O	?	-	ALA	deletion	UNP Q9FMB4
O	?	-	GLY	deletion	UNP Q9FMB4

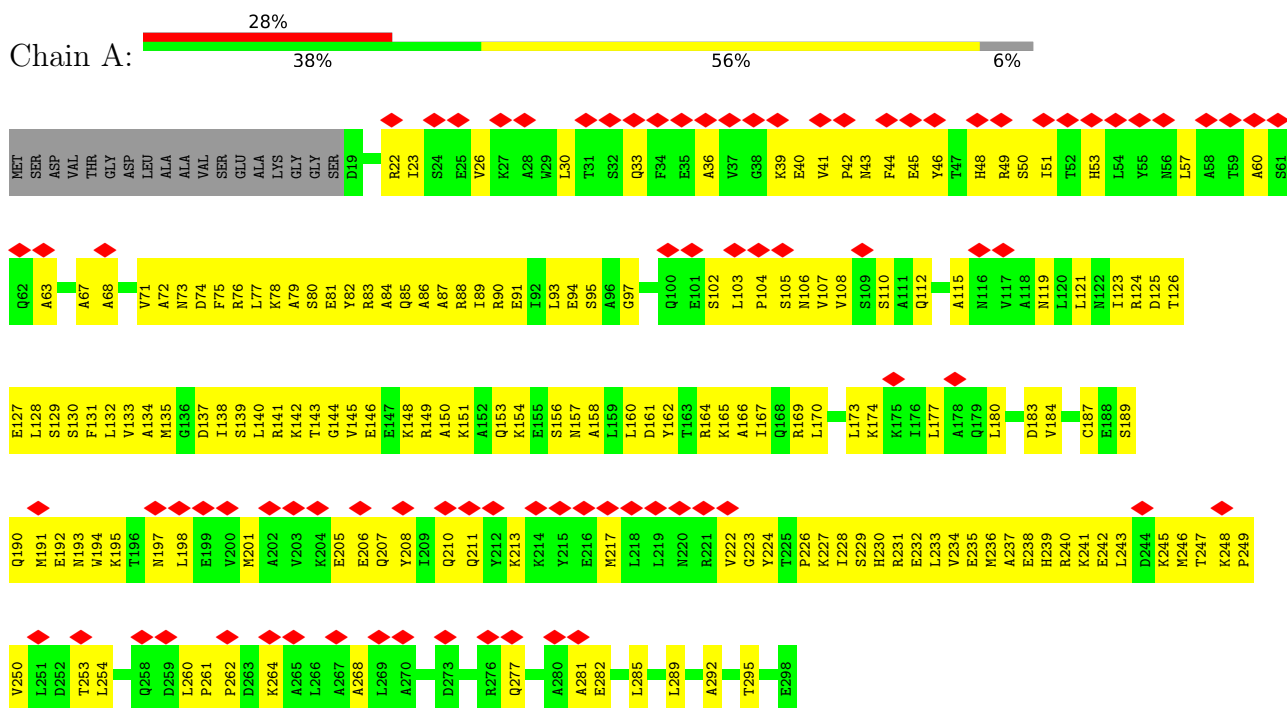
- Molecule 4 is a protein called AUGMIN subunit 3.

Mol	Chain	Residues	Atoms					AltConf	Trace
4	C	375	Total	C	N	O	S	0	0
			2930	1809	535	575	11		
4	P	371	Total	C	N	O	S	0	0
			2901	1792	531	567	11		

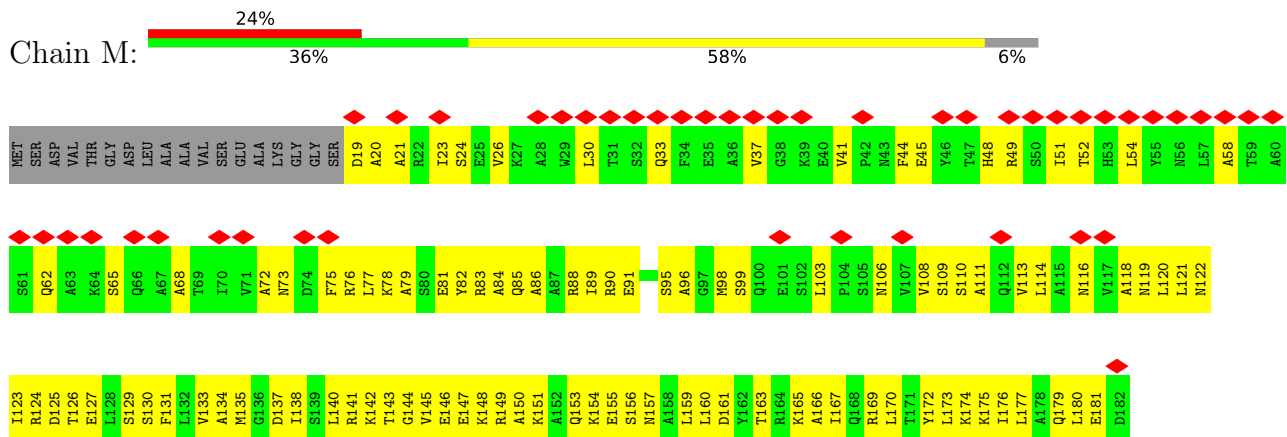
### 3 Residue-property plots

These plots are drawn for all protein, RNA, DNA and oligosaccharide chains in the entry. The first graphic for a chain summarises the proportions of the various outlier classes displayed in the second graphic. The second graphic shows the sequence view annotated by issues in geometry and atom inclusion in map density. Residues are color-coded according to the number of geometric quality criteria for which they contain at least one outlier: green = 0, yellow = 1, orange = 2 and red = 3 or more. A red diamond above a residue indicates a poor fit to the EM map for this residue (all-atom inclusion < 40%). Stretches of 2 or more consecutive residues without any outlier are shown as a green connector. Residues present in the sample, but not in the model, are shown in grey.

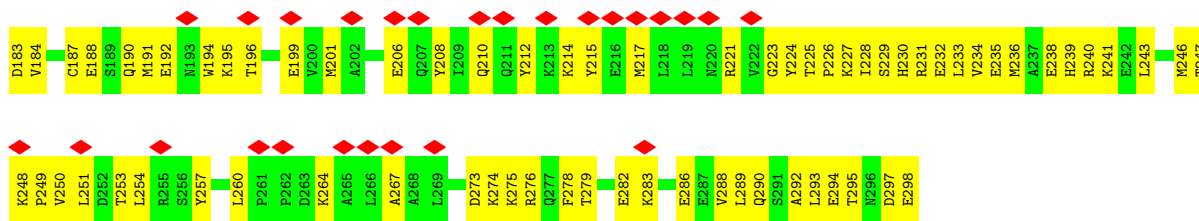
#### • Molecule 1: AUGMIN subunit 1



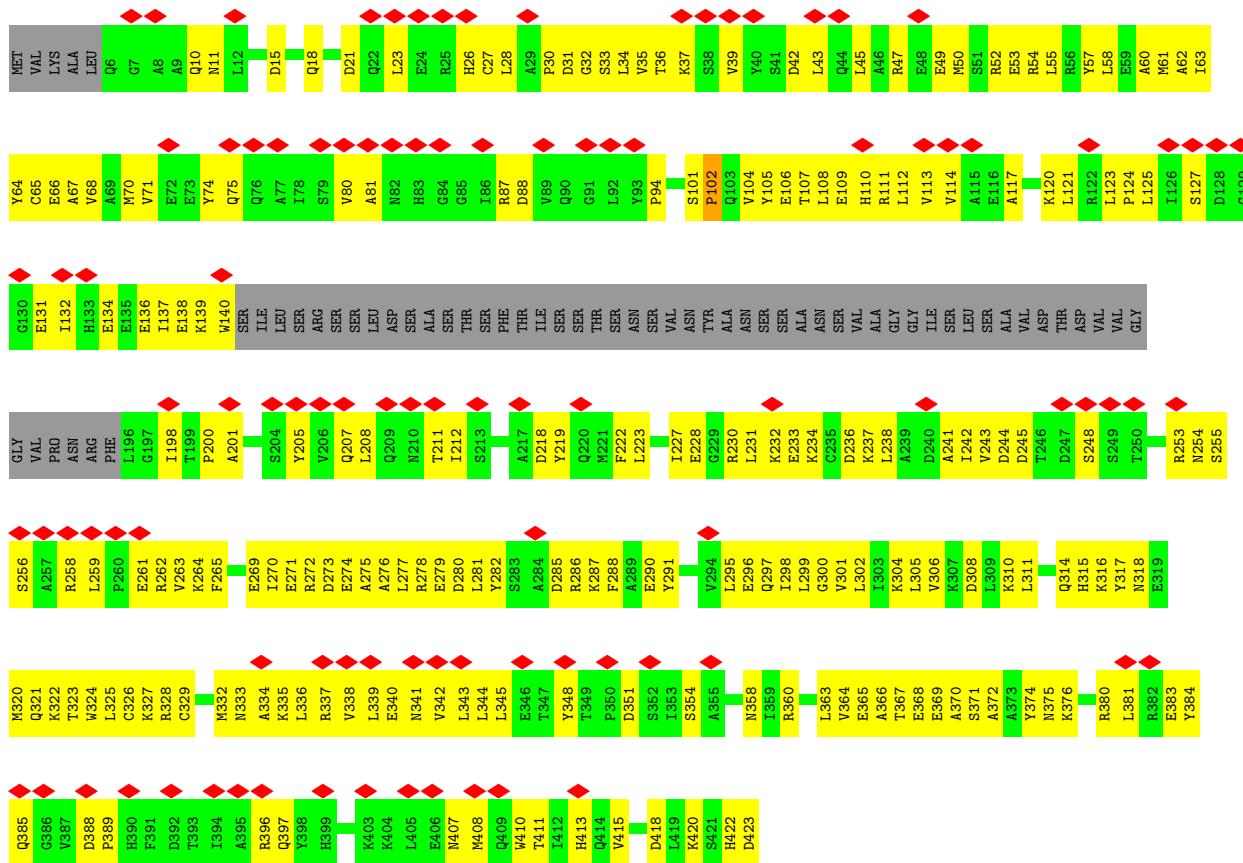
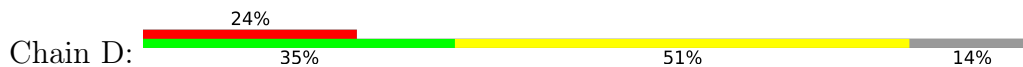
#### • Molecule 1: AUGMIN subunit 1





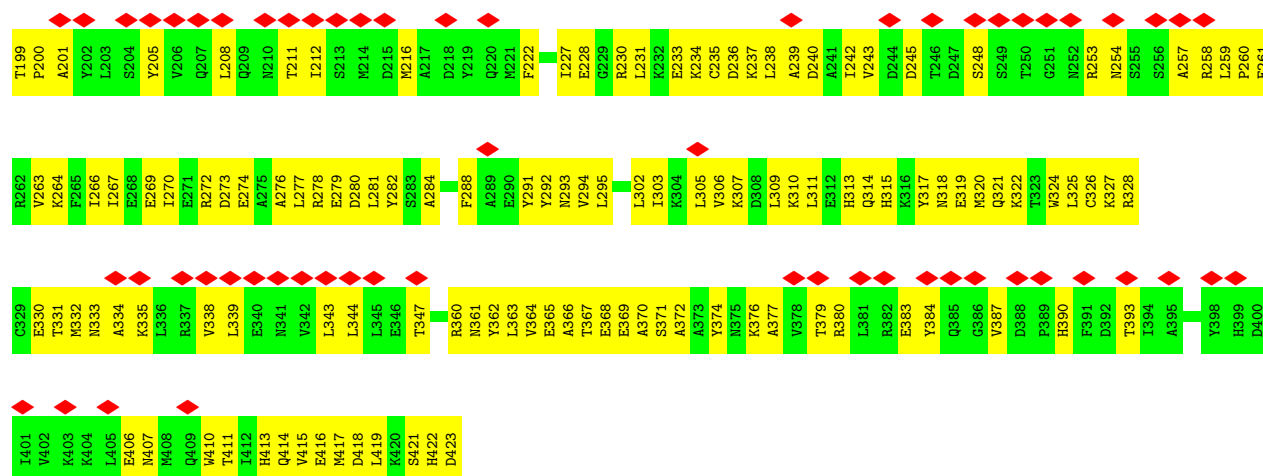


• Molecule 2: AUGMIN subunit 4

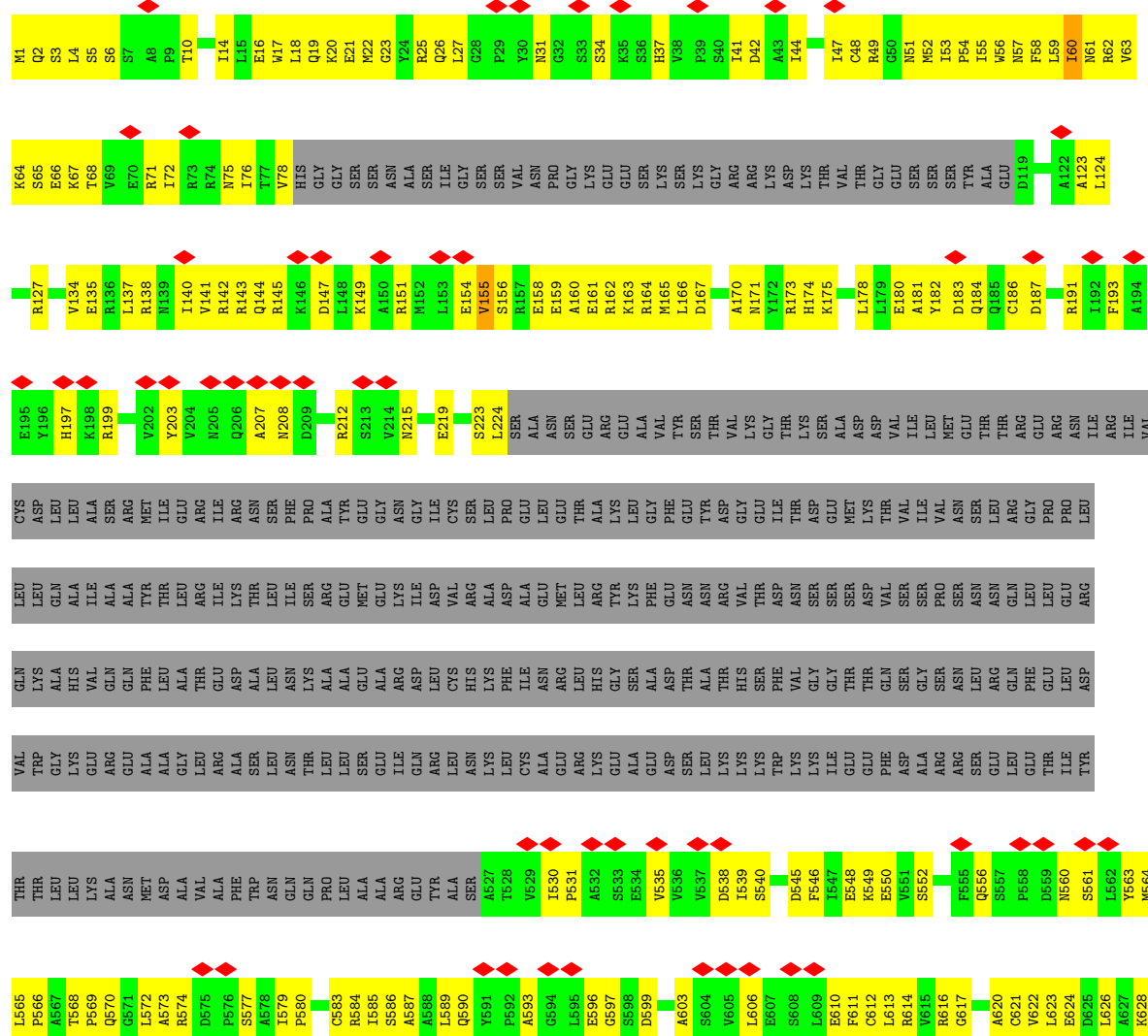
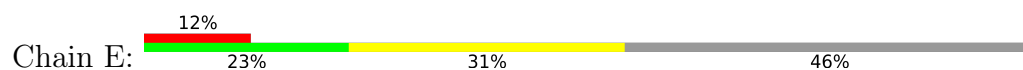


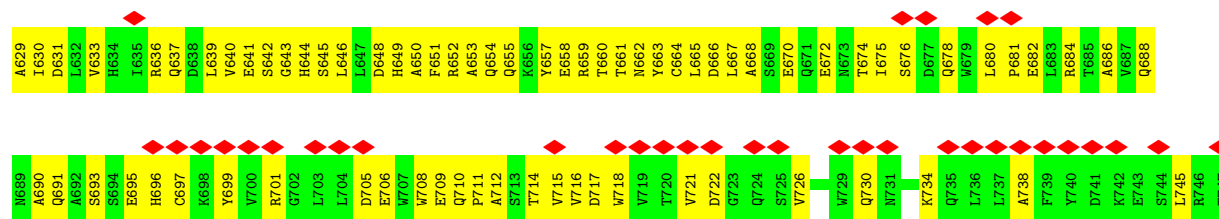
• Molecule 2: AUGMIN subunit 4



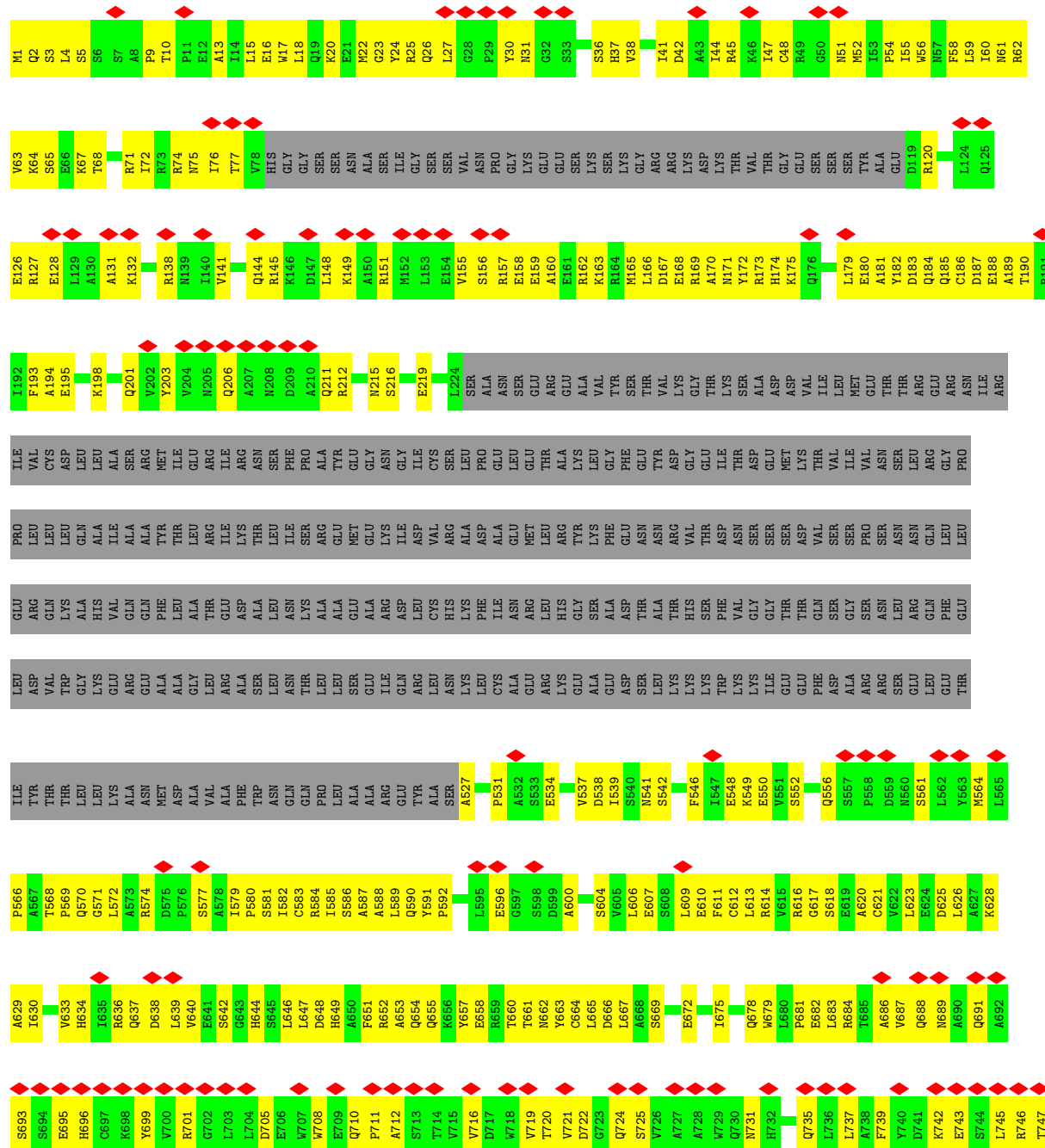
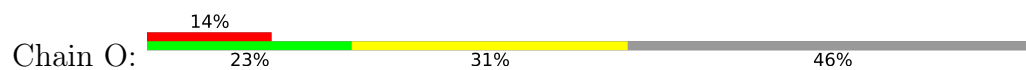


### • Molecule 3: AUGMIN subunit 5

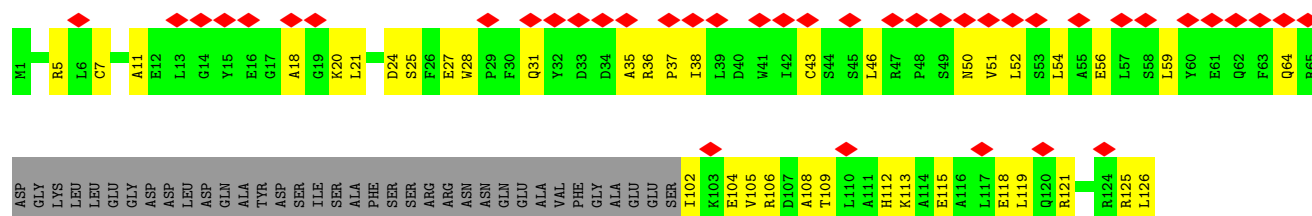
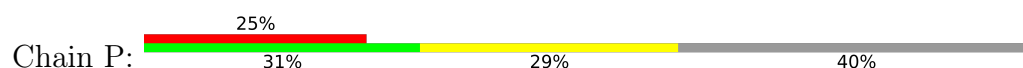




• Molecule 3: AUGMIN subunit 5



Chain C: 25% 32% 29% 39%





## 4 Experimental information

Property	Value	Source
EM reconstruction method	SINGLE PARTICLE	Depositor
Imposed symmetry	POINT, C2	Depositor
Number of particles used	6578	Depositor
Resolution determination method	FSC 0.143 CUT-OFF	Depositor
CTF correction method	NONE	Depositor
Microscope	TFS GLACIOS	Depositor
Voltage (kV)	200	Depositor
Electron dose ( $e^-/\text{\AA}^2$ )	60	Depositor
Minimum defocus (nm)	600	Depositor
Maximum defocus (nm)	1800	Depositor
Magnification	Not provided	
Image detector	GATAN K3 (6k x 4k)	Depositor
Maximum map value	0.023	Depositor
Minimum map value	-0.008	Depositor
Average map value	0.000	Depositor
Map value standard deviation	0.001	Depositor
Recommended contour level	0.004	Depositor
Map size ( $\text{\AA}$ )	337.91998, 337.91998, 337.91998	wwPDB
Map dimensions	384, 384, 384	wwPDB
Map angles ( $^\circ$ )	90.0, 90.0, 90.0	wwPDB
Pixel spacing ( $\text{\AA}$ )	0.87999994, 0.87999994, 0.87999994	Depositor

## 5 Model quality [i](#)

### 5.1 Standard geometry [i](#)

The Z score for a bond length (or angle) is the number of standard deviations the observed value is removed from the expected value. A bond length (or angle) with  $|Z| > 5$  is considered an outlier worth inspection. RMSZ is the root-mean-square of all Z scores of the bond lengths (or angles).

Mol	Chain	Bond lengths		Bond angles	
		RMSZ	$\# Z  > 5$	RMSZ	$\# Z  > 5$
1	A	0.14	0/2265	0.41	0/3054
1	M	0.13	0/2265	0.37	0/3054
2	D	0.15	0/2934	0.43	2/3965 (0.1%)
2	N	0.14	0/2934	0.41	2/3965 (0.1%)
3	E	0.17	0/3289	0.45	0/4447
3	O	0.18	0/3289	0.41	0/4447
4	C	0.13	0/2968	0.33	0/4009
4	P	0.14	0/2939	0.36	0/3970
All	All	0.15	0/22883	0.40	4/30911 (0.0%)

Chiral center outliers are detected by calculating the chiral volume of a chiral center and verifying if the center is modelled as a planar moiety or with the opposite hand. A planarity outlier is detected by checking planarity of atoms in a peptide group, atoms in a mainchain group or atoms of a sidechain that are expected to be planar.

Mol	Chain	#Chirality outliers	#Planarity outliers
2	D	0	1

There are no bond length outliers.

All (4) bond angle outliers are listed below:

Mol	Chain	Res	Type	Atoms	Z	Observed(°)	Ideal(°)
2	N	102	PRO	N-CA-CB	7.31	110.53	103.51
2	D	94	PRO	N-CA-CB	7.27	110.25	103.41
2	D	102	PRO	N-CA-CB	6.67	110.59	103.39
2	N	94	PRO	N-CA-CB	5.83	109.97	103.44

There are no chirality outliers.

All (1) planarity outliers are listed below:

Mol	Chain	Res	Type	Group
2	D	326	CYS	Peptide

## 5.2 Too-close contacts ⓘ

In the following table, the Non-H and H(model) columns list the number of non-hydrogen atoms and hydrogen atoms in the chain respectively. The H(added) column lists the number of hydrogen atoms added and optimized by MolProbity. The Clashes column lists the number of clashes within the asymmetric unit, whereas Symm-Clashes lists symmetry-related clashes.

Mol	Chain	Non-H	H(model)	H(added)	Clashes	Symm-Clashes
1	A	2235	0	2261	232	0
1	M	2235	0	2261	250	0
2	D	2890	0	2806	277	0
2	N	2890	0	2806	286	0
3	E	3236	0	3202	310	0
3	O	3236	0	3202	310	0
4	C	2930	0	2921	220	0
4	P	2901	0	2897	225	0
All	All	22553	0	22356	1552	0

The all-atom clashscore is defined as the number of clashes found per 1000 atoms (including hydrogen atoms). The all-atom clashscore for this structure is 35.

The worst 5 of 1552 close contacts within the same asymmetric unit are listed below, sorted by their clash magnitude.

Atom-1	Atom-2	Interatomic distance (Å)	Clash overlap (Å)
2:N:24:GLU:HA	2:N:27:CYS:HB2	1.48	0.94
1:M:125:ASP:HB2	3:O:585:ILE:HB	1.49	0.94
2:D:422:HIS:HB2	3:E:20:LYS:HD2	1.54	0.89
1:M:239:HIS:HE2	3:O:64:LYS:HG2	1.37	0.88
2:D:314:GLN:HA	2:D:317:TYR:HB3	1.53	0.88

There are no symmetry-related clashes.

## 5.3 Torsion angles ⓘ

### 5.3.1 Protein backbone ⓘ

In the following table, the Percentiles column shows the percent Ramachandran outliers of the chain as a percentile score with respect to all PDB entries followed by that with respect to all EM entries.

The Analysed column shows the number of residues for which the backbone conformation was analysed, and the total number of residues.



Mol	Chain	Analysed	Favoured	Allowed	Outliers	Percentiles	
1	A	278/298 (93%)	250 (90%)	28 (10%)	0	100	100
1	M	278/298 (93%)	257 (92%)	21 (8%)	0	100	100
2	D	361/423 (85%)	336 (93%)	25 (7%)	0	100	100
2	N	361/423 (85%)	320 (89%)	41 (11%)	0	100	100
3	E	399/747 (53%)	363 (91%)	34 (8%)	2 (0%)	24	63
3	O	399/747 (53%)	355 (89%)	44 (11%)	0	100	100
4	C	369/617 (60%)	346 (94%)	23 (6%)	0	100	100
4	P	365/617 (59%)	340 (93%)	25 (7%)	0	100	100
All	All	2810/4170 (67%)	2567 (91%)	241 (9%)	2 (0%)	49	83

All (2) Ramachandran outliers are listed below:

Mol	Chain	Res	Type
3	E	60	ILE
3	E	155	VAL

### 5.3.2 Protein sidechains ⓘ

In the following table, the Percentiles column shows the percent sidechain outliers of the chain as a percentile score with respect to all PDB entries followed by that with respect to all EM entries.

The Analysed column shows the number of residues for which the sidechain conformation was analysed, and the total number of residues.

Mol	Chain	Analysed	Rotameric	Outliers	Percentiles	
1	A	242/254 (95%)	242 (100%)	0	100	100
1	M	242/254 (95%)	242 (100%)	0	100	100
2	D	304/368 (83%)	304 (100%)	0	100	100
2	N	304/368 (83%)	304 (100%)	0	100	100
3	E	353/644 (55%)	353 (100%)	0	100	100
3	O	353/644 (55%)	353 (100%)	0	100	100
4	C	323/538 (60%)	323 (100%)	0	100	100
4	P	320/538 (60%)	320 (100%)	0	100	100
All	All	2441/3608 (68%)	2441 (100%)	0	100	100

There are no protein residues with a non-rotameric sidechain to report.

Sometimes sidechains can be flipped to improve hydrogen bonding and reduce clashes. 5 of 47 such sidechains are listed below:

Mol	Chain	Res	Type
1	M	179	GLN
3	O	51	ASN
1	M	239	HIS
2	N	407	ASN
3	O	215	ASN

### 5.3.3 RNA [i](#)

There are no RNA molecules in this entry.

### 5.4 Non-standard residues in protein, DNA, RNA chains [i](#)

There are no non-standard protein/DNA/RNA residues in this entry.

### 5.5 Carbohydrates [i](#)

There are no oligosaccharides in this entry.

### 5.6 Ligand geometry [i](#)

There are no ligands in this entry.

### 5.7 Other polymers [i](#)

There are no such residues in this entry.

### 5.8 Polymer linkage issues [i](#)

There are no chain breaks in this entry.

## 6 Map visualisation [i](#)

This section contains visualisations of the EMDB entry EMD-49227. These allow visual inspection of the internal detail of the map and identification of artifacts.

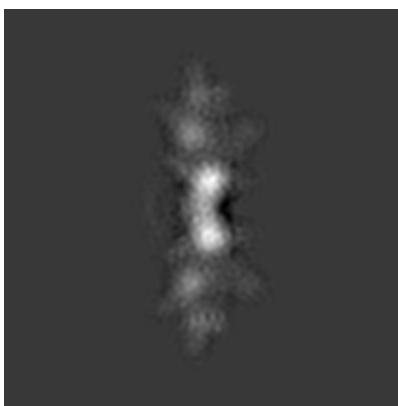
Images derived from a raw map, generated by summing the deposited half-maps, are presented below the corresponding image components of the primary map to allow further visual inspection and comparison with those of the primary map.

### 6.1 Orthogonal projections [i](#)

#### 6.1.1 Primary map



X

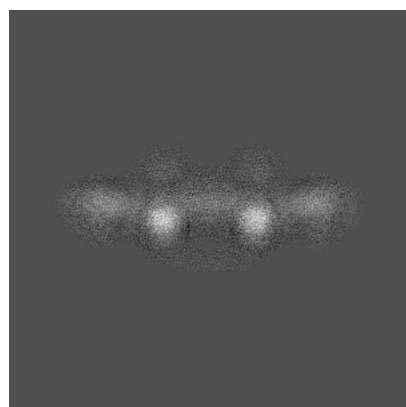


Y

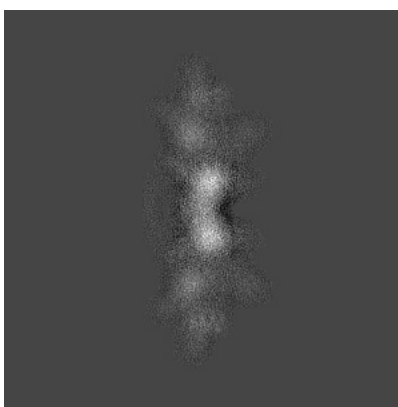


Z

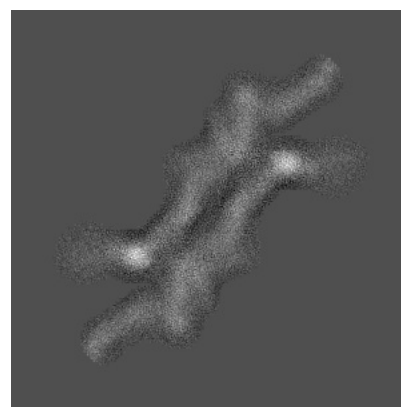
#### 6.1.2 Raw map



X



Y

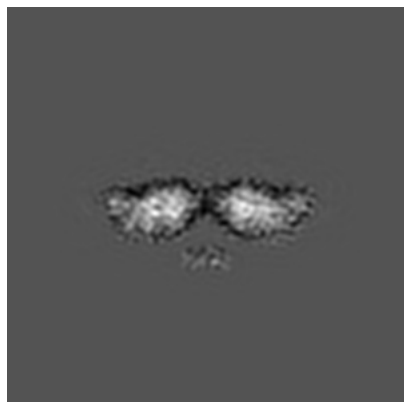


Z

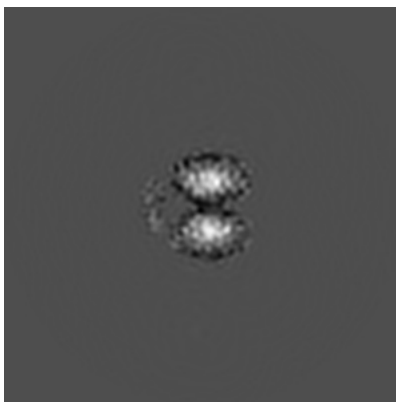
The images above show the map projected in three orthogonal directions.

## 6.2 Central slices [i](#)

### 6.2.1 Primary map



X Index: 192

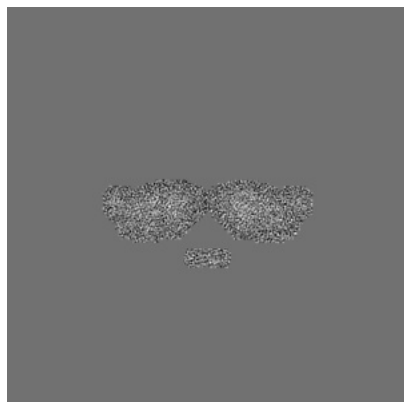


Y Index: 192

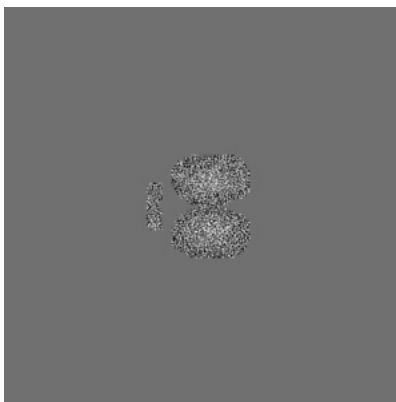


Z Index: 192

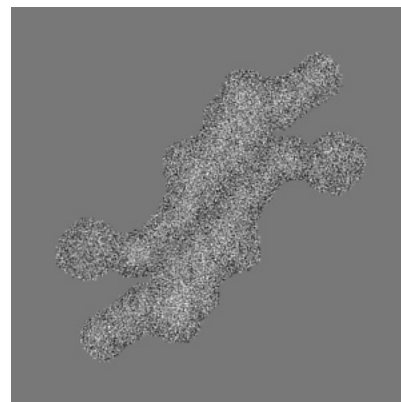
### 6.2.2 Raw map



X Index: 192



Y Index: 192

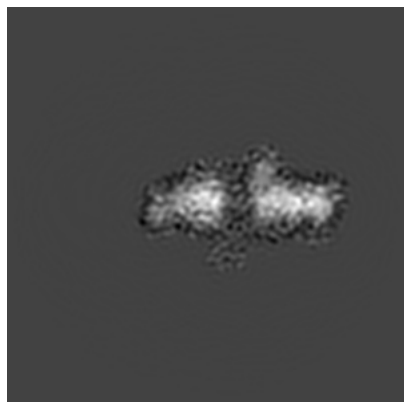


Z Index: 192

The images above show central slices of the map in three orthogonal directions.

## 6.3 Largest variance slices [i](#)

### 6.3.1 Primary map



X Index: 218

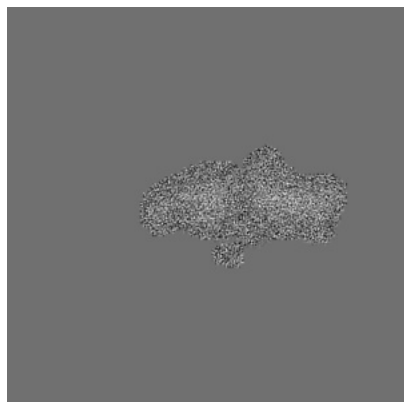


Y Index: 150

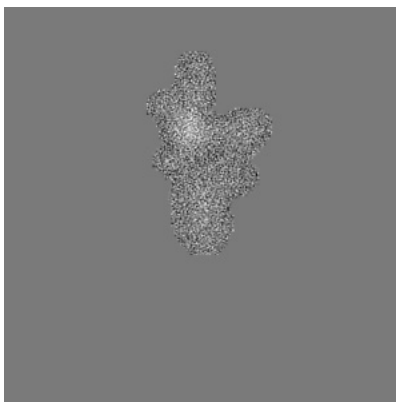


Z Index: 193

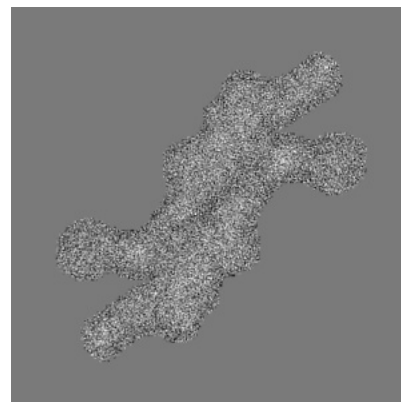
### 6.3.2 Raw map



X Index: 220



Y Index: 235

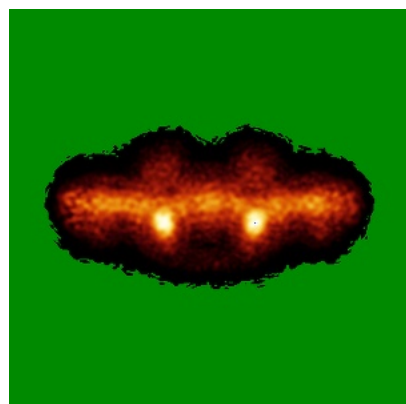


Z Index: 190

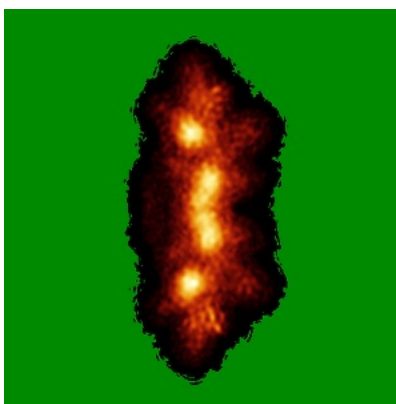
The images above show the largest variance slices of the map in three orthogonal directions.

## 6.4 Orthogonal standard-deviation projections (False-color) [i](#)

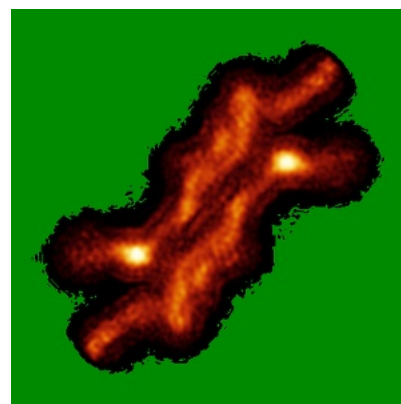
### 6.4.1 Primary map



X

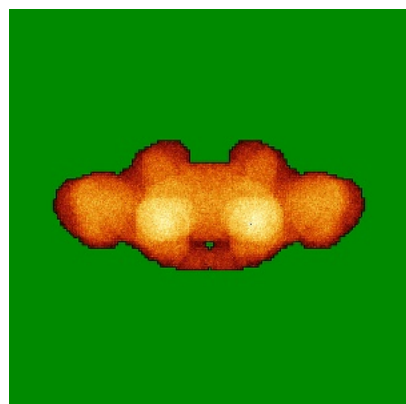


Y

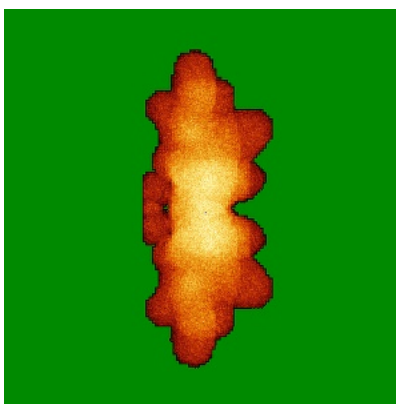


Z

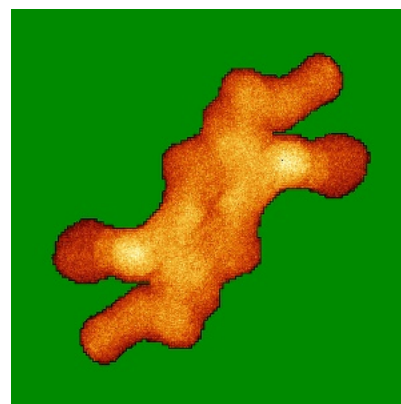
### 6.4.2 Raw map



X



Y



Z

The images above show the map standard deviation projections with false color in three orthogonal directions. Minimum values are shown in green, max in blue, and dark to light orange shades represent small to large values respectively.

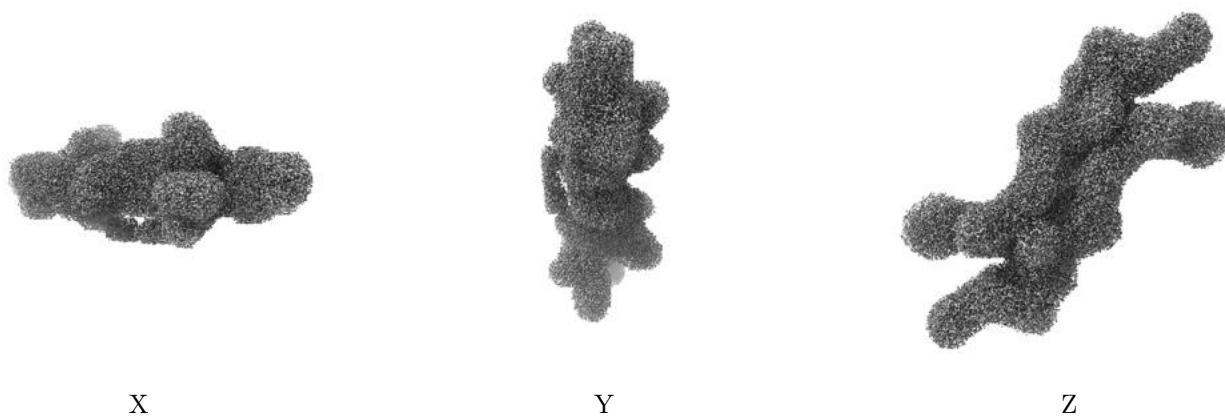
## 6.5 Orthogonal surface views [i](#)

### 6.5.1 Primary map



The images above show the 3D surface view of the map at the recommended contour level 0.004. These images, in conjunction with the slice images, may facilitate assessment of whether an appropriate contour level has been provided.

### 6.5.2 Raw map



These images show the 3D surface of the raw map. The raw map's contour level was selected so that its surface encloses the same volume as the primary map does at its recommended contour level.

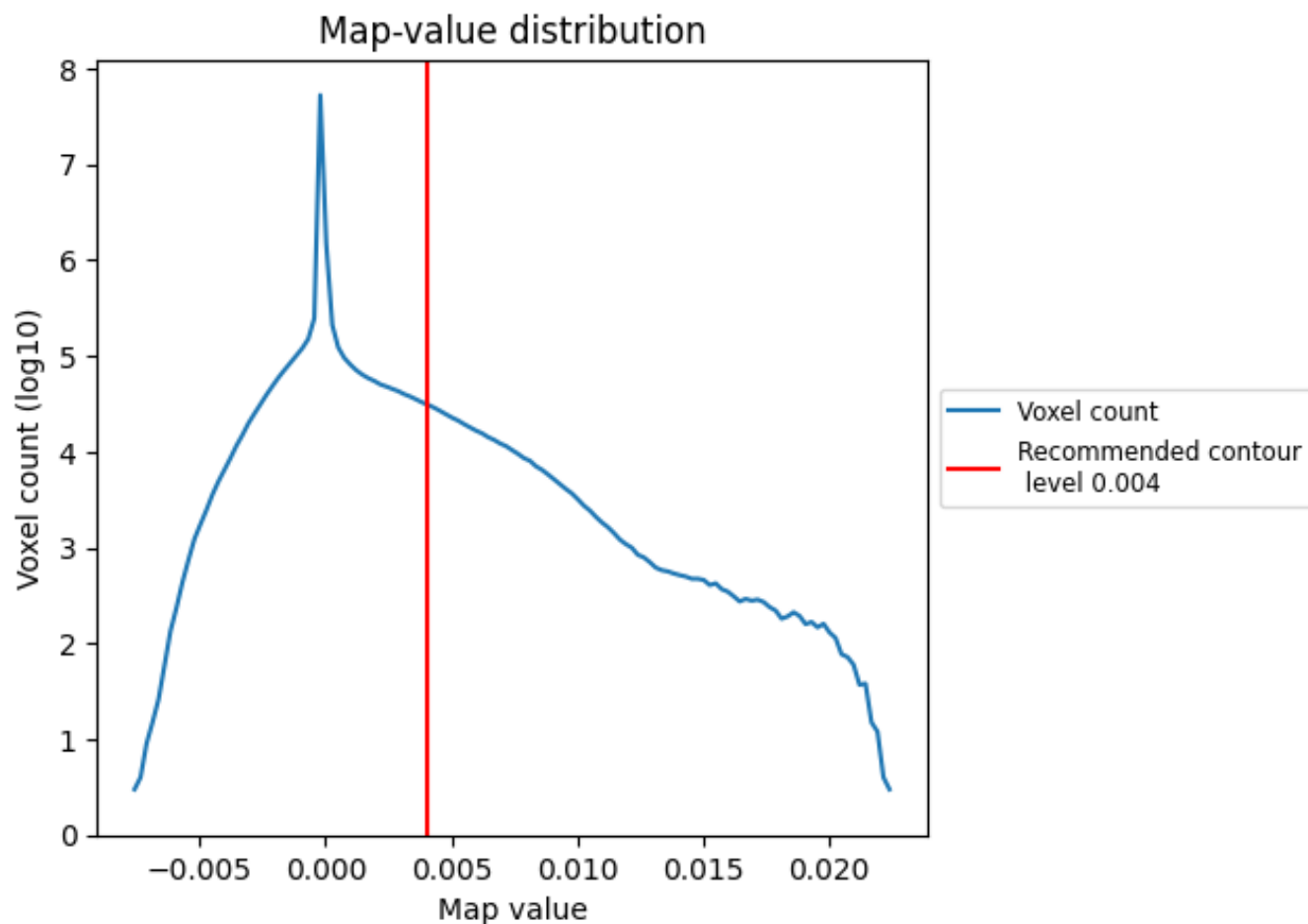
## 6.6 Mask visualisation [i](#)

This section was not generated. No masks/segmentation were deposited.

## 7 Map analysis [i](#)

This section contains the results of statistical analysis of the map.

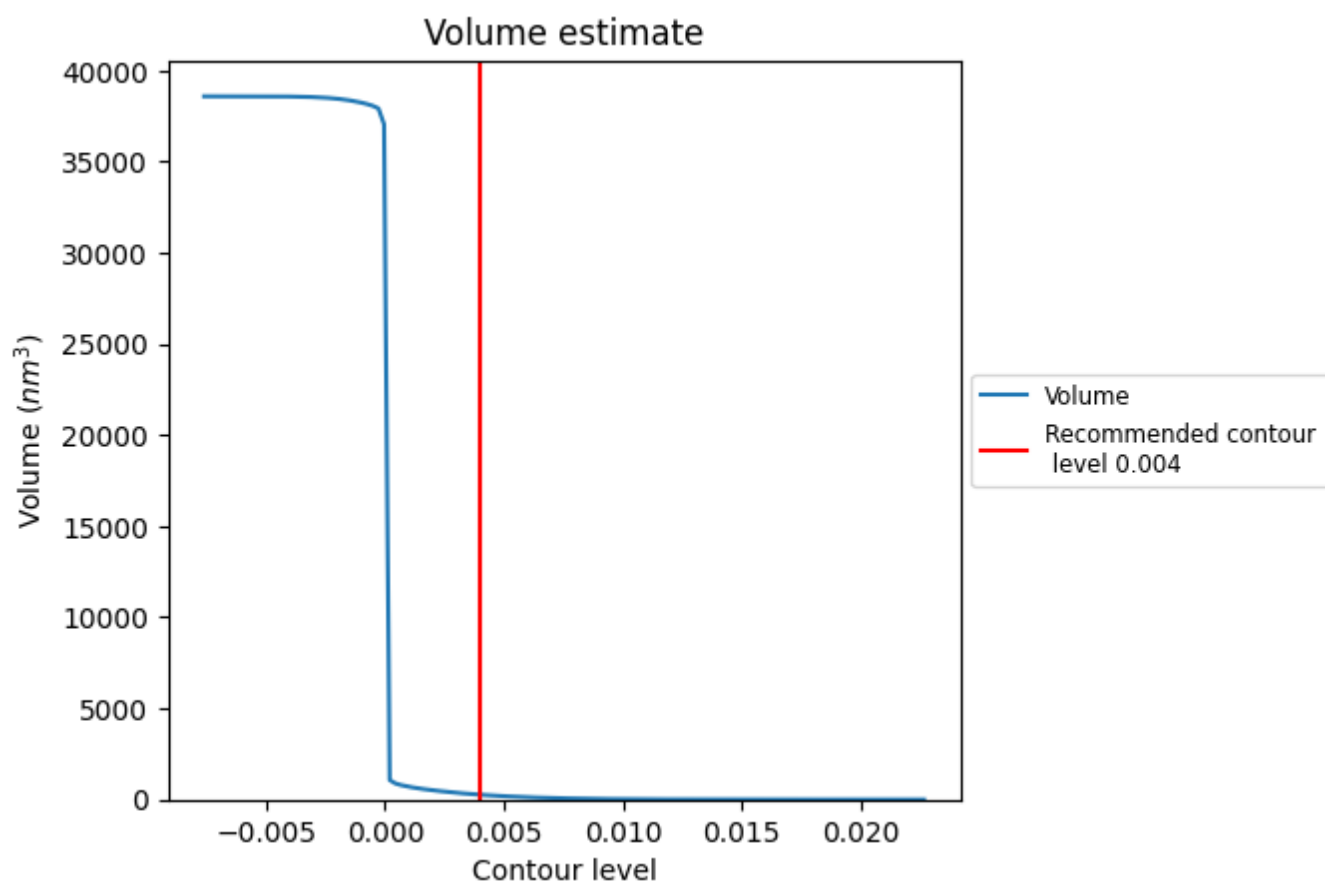
### 7.1 Map-value distribution [i](#)



The map-value distribution is plotted in 128 intervals along the x-axis. The y-axis is logarithmic. A spike in this graph at zero usually indicates that the volume has been masked.



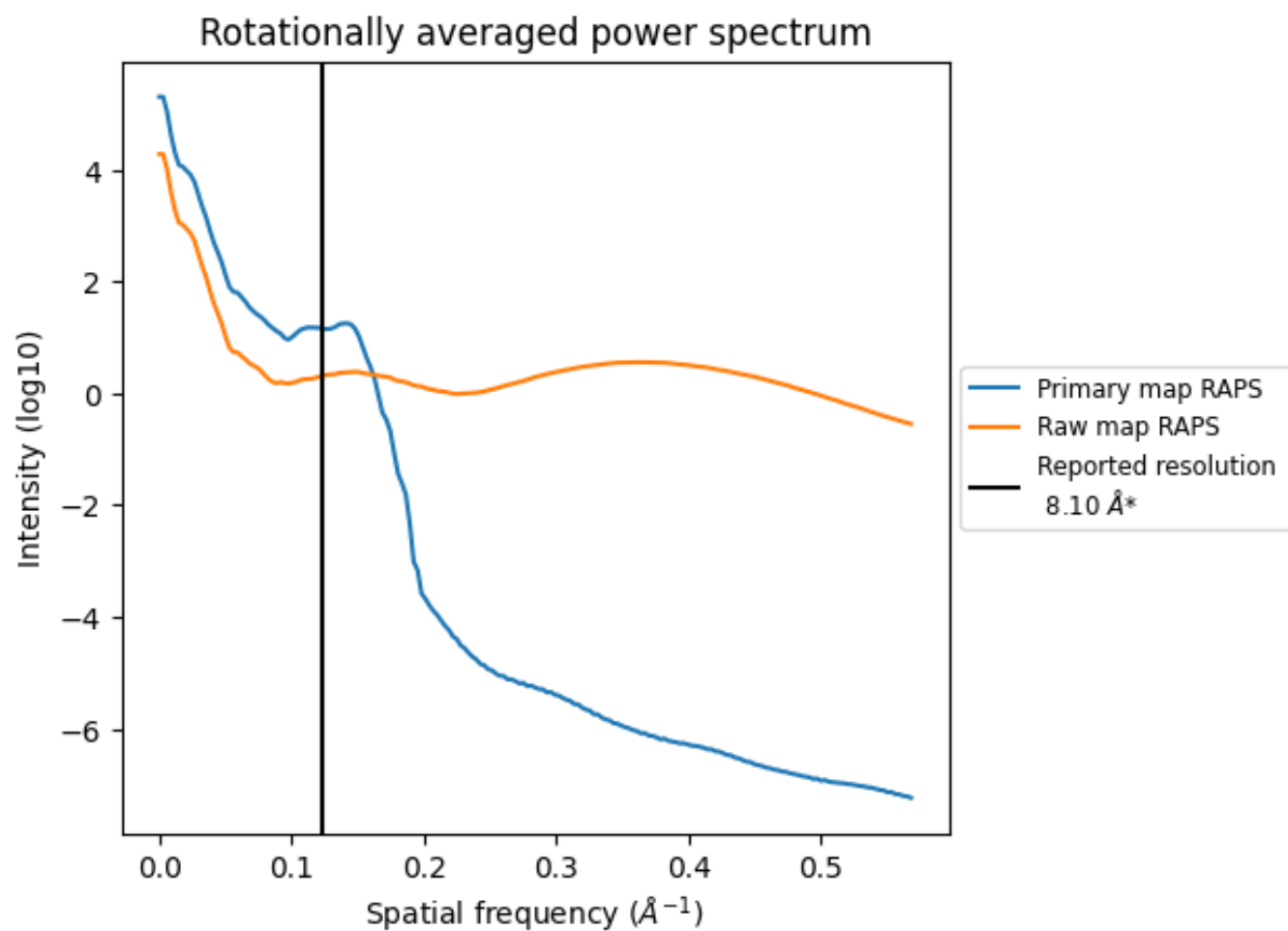
## 7.2 Volume estimate [i](#)



The volume at the recommended contour level is 266 nm<sup>3</sup>; this corresponds to an approximate mass of 240 kDa.

The volume estimate graph shows how the enclosed volume varies with the contour level. The recommended contour level is shown as a vertical line and the intersection between the line and the curve gives the volume of the enclosed surface at the given level.

### 7.3 Rotationally averaged power spectrum ⓘ

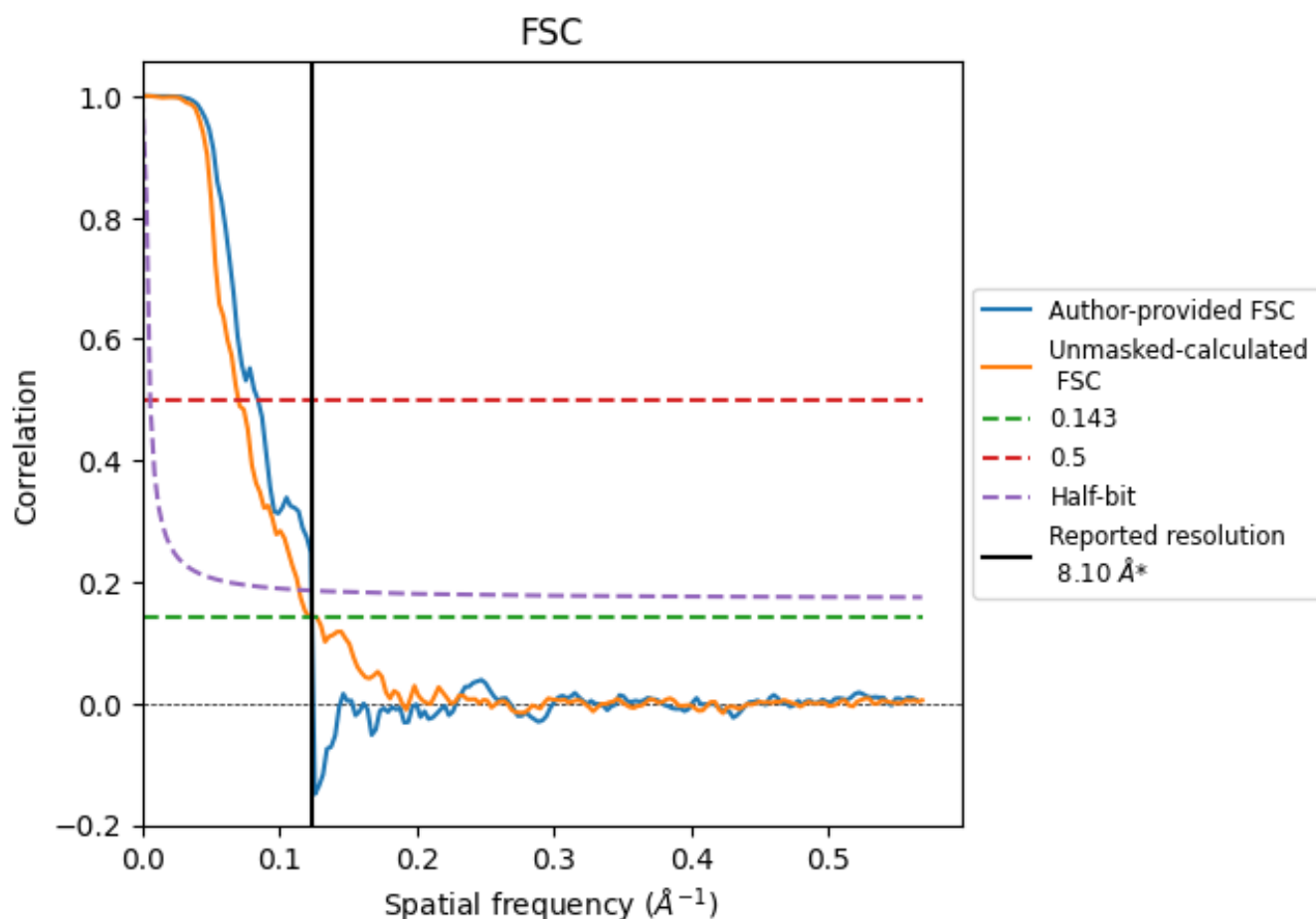


\*Reported resolution corresponds to spatial frequency of 0.123 Å⁻¹

## 8 Fourier-Shell correlation [i](#)

Fourier-Shell Correlation (FSC) is the most commonly used method to estimate the resolution of single-particle and subtomogram-averaged maps. The shape of the curve depends on the imposed symmetry, mask and whether or not the two 3D reconstructions used were processed from a common reference. The reported resolution is shown as a black line. A curve is displayed for the half-bit criterion in addition to lines showing the 0.143 gold standard cut-off and 0.5 cut-off.

### 8.1 FSC [i](#)



\*Reported resolution corresponds to spatial frequency of 0.123  $\text{\AA}^{-1}$

## 8.2 Resolution estimates [i](#)

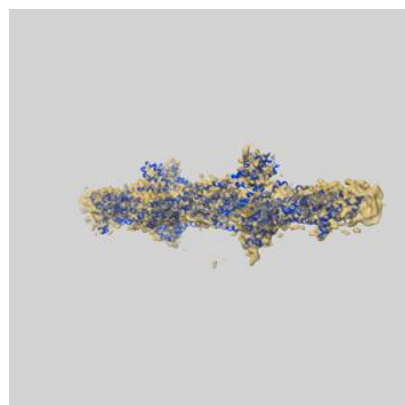
Resolution estimate (Å)	Estimation criterion (FSC cut-off)		
	0.143	0.5	Half-bit
Reported by author	8.10	-	-
Author-provided FSC curve	8.09	11.86	8.11
Unmasked-calculated*	8.25	14.27	8.76

\*Resolution estimate based on FSC curve calculated by comparison of deposited half-maps.

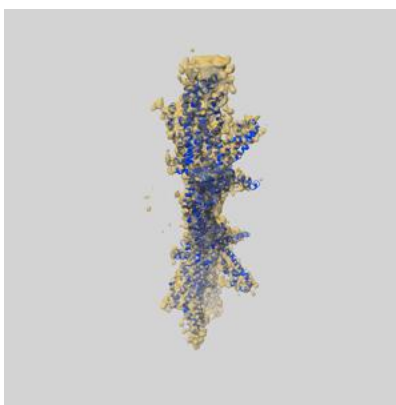
## 9 Map-model fit [i](#)

This section contains information regarding the fit between EMDB map EMD-49227 and PDB model 9NBD. Per-residue inclusion information can be found in section [3](#) on page [8](#).

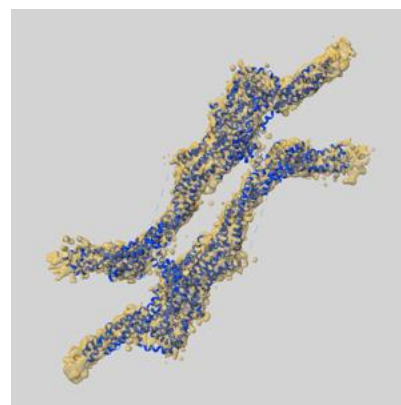
### 9.1 Map-model overlay [i](#)



X



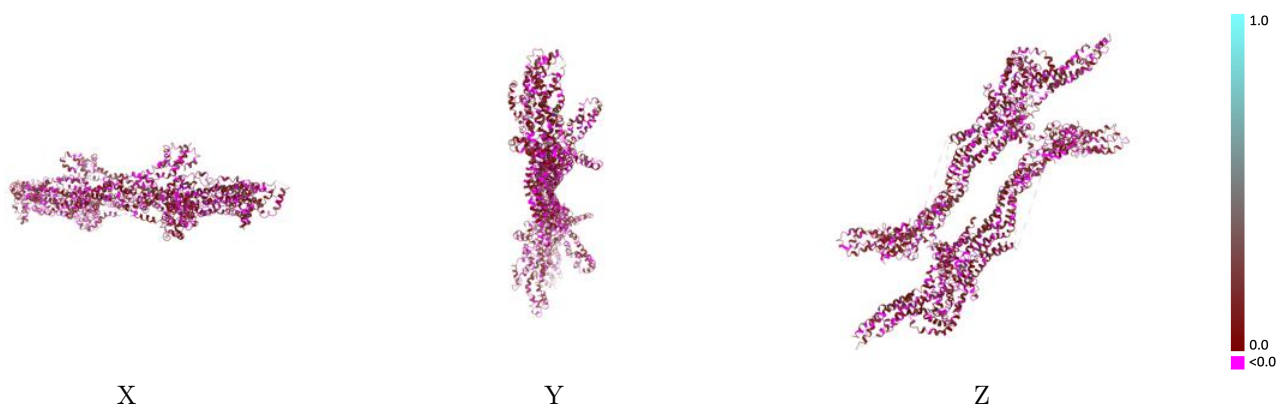
Y



Z

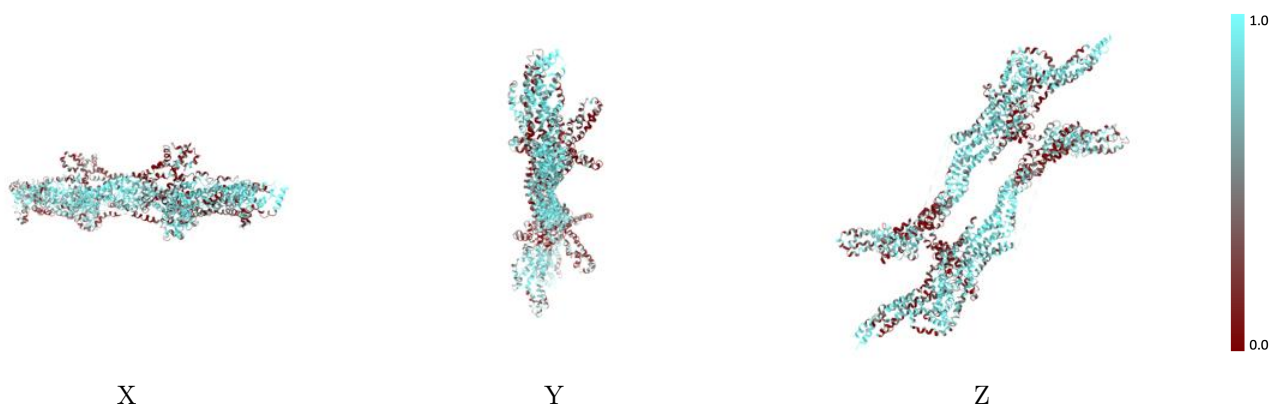
The images above show the 3D surface view of the map at the recommended contour level 0.004 at 50% transparency in yellow overlaid with a ribbon representation of the model coloured in blue. These images allow for the visual assessment of the quality of fit between the atomic model and the map.

## 9.2 Q-score mapped to coordinate model [i](#)



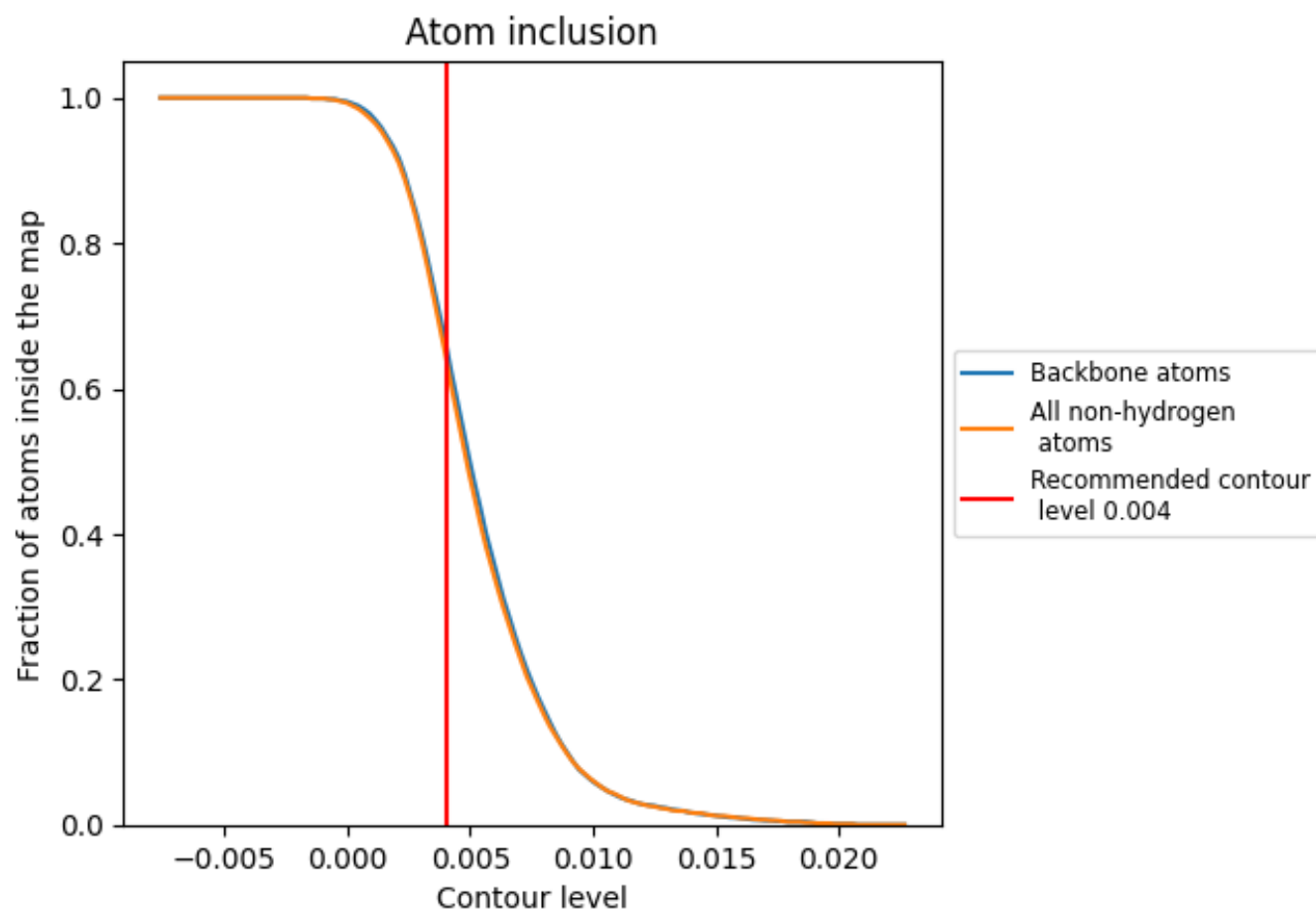
The images above show the model with each residue coloured according to its Q-score. This shows their resolvability in the map with higher Q-score values reflecting better resolvability. Please note: Q-score is calculating the resolvability of atoms, and thus high values are only expected at resolutions at which atoms can be resolved. Low Q-score values may therefore be expected for many entries.

## 9.3 Atom inclusion mapped to coordinate model [i](#)



The images above show the model with each residue coloured according to its atom inclusion. This shows to what extent they are inside the map at the recommended contour level (0.004).

## 9.4 Atom inclusion [i](#)



At the recommended contour level, 66% of all backbone atoms, 64% of all non-hydrogen atoms, are inside the map.

9.5 Map-model fit summary ⓘ

The table lists the average atom inclusion at the recommended contour level (0.004) and Q-score for the entire model and for each chain.

Chain	Atom inclusion	Q-score
All	<div></div> 0.6450	<div></div> 0.0910
A	<div></div> 0.6630	<div></div> 0.0940
C	<div></div> 0.5490	<div></div> 0.0930
D	<div></div> 0.6810	<div></div> 0.0930
E	<div></div> 0.6970	<div></div> 0.0900
M	<div></div> 0.6610	<div></div> 0.0940
N	<div></div> 0.6890	<div></div> 0.0870
O	<div></div> 0.6840	<div></div> 0.0810
P	<div></div> 0.5380	<div></div> 0.1010

