



Full wwPDB X-ray Structure Validation Report ⓘ

Mar 3, 2021 – 02:08 am GMT

PDB ID : 7NDL
Title : Crystal structure of human GFAT-1 S205D
Authors : Ruegenberg, S.; Baumann, U.; Denzel, M.S.
Deposited on : 2021-02-02
Resolution : 2.22 Å(reported)

This is a Full wwPDB X-ray Structure Validation Report for a publicly released PDB entry.

We welcome your comments at validation@mail.wwpdb.org

A user guide is available at

<https://www.wwpdb.org/validation/2017/XrayValidationReportHelp>

with specific help available everywhere you see the ⓘ symbol.

The following versions of software and data (see [references ⓘ](#)) were used in the production of this report:

MolProbity : 4.02b-467
Mogul : 1.8.5 (274361), CSD as541be (2020)
Xtriage (Phenix) : 1.13
EDS : 2.17.1
buster-report : 1.1.7 (2018)
Percentile statistics : 20191225.v01 (using entries in the PDB archive December 25th 2019)
Refmac : 5.8.0158
CCP4 : 7.0.044 (Gargrove)
Ideal geometry (proteins) : Engh & Huber (2001)
Ideal geometry (DNA, RNA) : Parkinson et al. (1996)
Validation Pipeline (wwPDB-VP) : 2.17.1

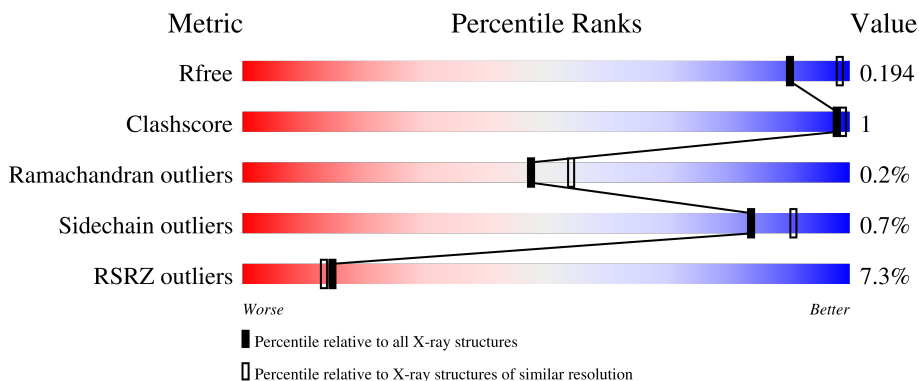
1 Overall quality at a glance

The following experimental techniques were used to determine the structure:

X-RAY DIFFRACTION

The reported resolution of this entry is 2.22 Å.

Percentile scores (ranging between 0-100) for global validation metrics of the entry are shown in the following graphic. The table shows the number of entries on which the scores are based.



Metric	Whole archive (#Entries)	Similar resolution (#Entries, resolution range(Å))
R_{free}	130704	5912 (2.24-2.20)
Clashscore	141614	6646 (2.24-2.20)
Ramachandran outliers	138981	6543 (2.24-2.20)
Sidechain outliers	138945	6544 (2.24-2.20)
RSRZ outliers	127900	5797 (2.24-2.20)

The table below summarises the geometric issues observed across the polymeric chains and their fit to the electron density. The red, orange, yellow and green segments of the lower bar indicate the fraction of residues that contain outliers for ≥ 3 , 2, 1 and 0 types of geometric quality criteria respectively. A grey segment represents the fraction of residues that are not modelled. The numeric value for each fraction is indicated below the corresponding segment, with a dot representing fractions $\leq 5\%$. The upper red bar (where present) indicates the fraction of residues that have poor fit to the electron density. The numeric value is given above the bar.

Mol	Chain	Length	Quality of chain
1	A	686	 2% 93%
1	B	686	 12% 92% 5%

2 Entry composition

There are 4 unique types of molecules in this entry. The entry contains 20987 atoms, of which 10425 are hydrogens and 0 are deuteriums.

In the tables below, the ZeroOcc column contains the number of atoms modelled with zero occupancy, the AltConf column contains the number of residues with at least one atom in alternate conformation and the Trace column contains the number of residues modelled with at most 2 atoms.

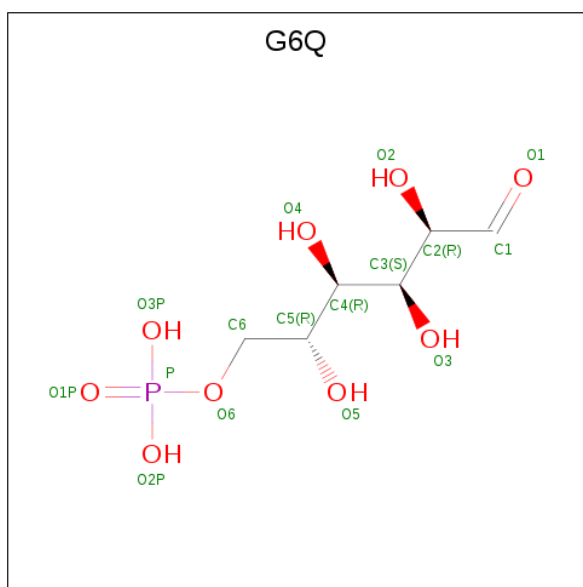
- Molecule 1 is a protein called Isoform 2 of Glutamine-fructose-6-phosphate aminotransferase [isomerizing] 1.

Mol	Chain	Residues	Atoms							ZeroOcc	AltConf	Trace
			Total	C	H	N	O	P	S			
1	A	658	10403	3279	5203	904	984	1	32	0	0	0
1	B	655	10365	3269	5188	900	976		32	0	0	0

There are 14 discrepancies between the modelled and reference sequences:

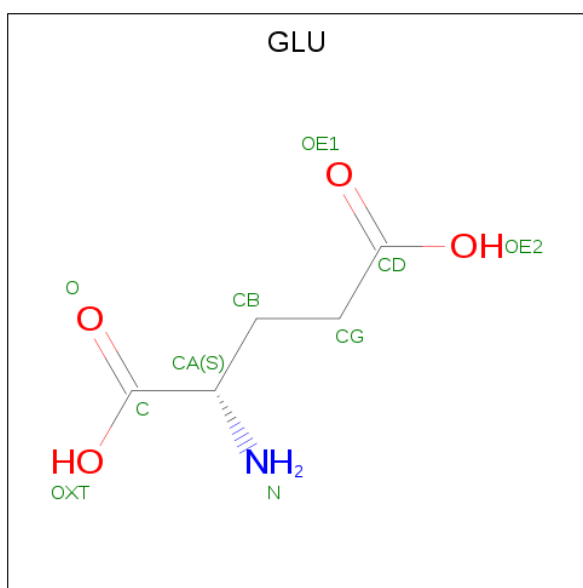
Chain	Residue	Modelled	Actual	Comment	Reference
A	205	ASP	SER	engineered mutation	UNP Q06210-2
A	295E	HIS	-	insertion	UNP Q06210-2
A	295F	HIS	-	insertion	UNP Q06210-2
A	295G	HIS	-	insertion	UNP Q06210-2
A	295H	HIS	-	insertion	UNP Q06210-2
A	295I	HIS	-	insertion	UNP Q06210-2
A	295J	HIS	-	insertion	UNP Q06210-2
B	205	ASP	SER	engineered mutation	UNP Q06210-2
B	294F	HIS	-	insertion	UNP Q06210-2
B	294G	HIS	-	insertion	UNP Q06210-2
B	294H	HIS	-	insertion	UNP Q06210-2
B	294I	HIS	-	insertion	UNP Q06210-2
B	294J	HIS	-	insertion	UNP Q06210-2
B	294K	HIS	-	insertion	UNP Q06210-2

- Molecule 2 is GLUCOSE-6-PHOSPHATE (three-letter code: G6Q) (formula: C₆H₁₃O₉P).



Mol	Chain	Residues	Atoms					ZeroOcc	AltConf
2	A	1	Total	C	H	O	P	0	0
			29	6	13	9	1		
2	B	1	Total	C	H	O	P	0	0
			29	6	13	9	1		

- Molecule 3 is GLUTAMIC ACID (three-letter code: GLU) (formula: $C_5H_9NO_4$).



Mol	Chain	Residues	Atoms					ZeroOcc	AltConf
3	A	1	Total	C	H	N	O	0	0
			18	5	8	1	4		

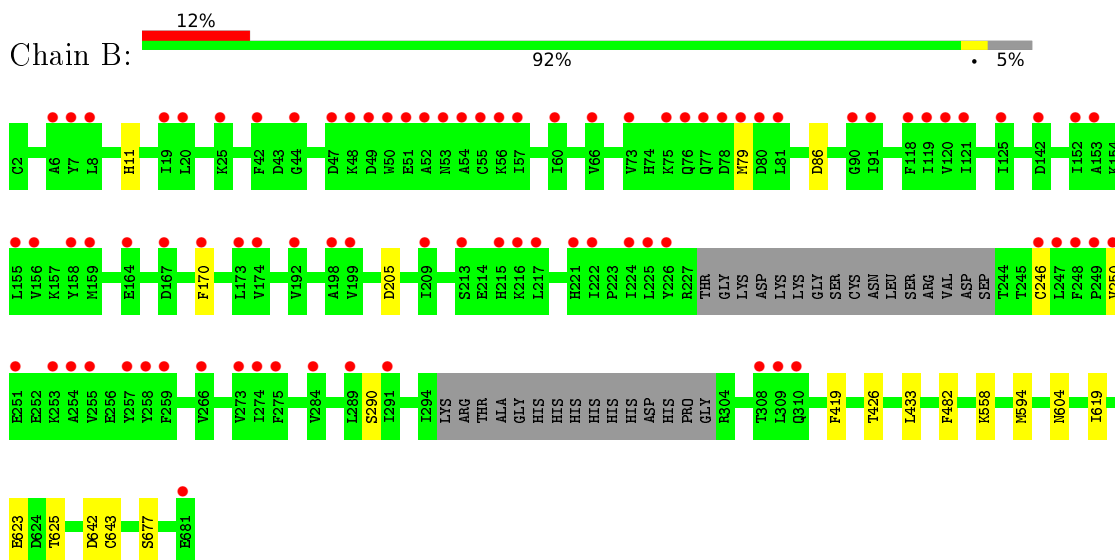
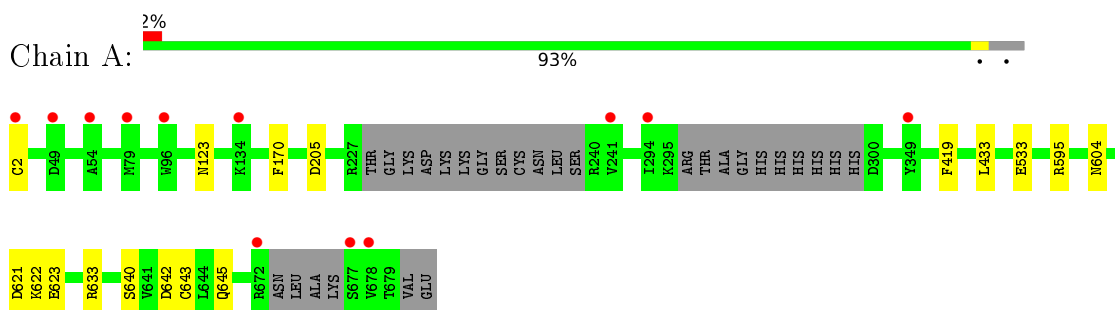
- Molecule 4 is water.

Mol	Chain	Residues	Atoms		ZeroOcc	AltConf
4	A	87	Total 87	O 87	0	0
4	B	56	Total 56	O 56	0	0

3 Residue-property plots [i](#)

These plots are drawn for all protein, RNA, DNA and oligosaccharide chains in the entry. The first graphic for a chain summarises the proportions of the various outlier classes displayed in the second graphic. The second graphic shows the sequence view annotated by issues in geometry and electron density. Residues are color-coded according to the number of geometric quality criteria for which they contain at least one outlier: green = 0, yellow = 1, orange = 2 and red = 3 or more. A red dot above a residue indicates a poor fit to the electron density ($RSRZ > 2$). Stretches of 2 or more consecutive residues without any outlier are shown as a green connector. Residues present in the sample, but not in the model, are shown in grey.

- Molecule 1: Isoform 2 of Glutamine-fructose-6-phosphate aminotransferase [isomerizing] 1



4 Data and refinement statistics

Property	Value	Source
Space group	P 41 21 2	Depositor
Cell constants a, b, c, α , β , γ	153.62Å 153.62Å 166.13Å 90.00° 90.00° 90.00°	Depositor
Resolution (Å)	90.91 – 2.22 112.79 – 2.22	Depositor EDS
% Data completeness (in resolution range)	99.5 (90.91-2.22) 95.3 (112.79-2.22)	Depositor EDS
R_{merge}	(Not available)	Depositor
R_{sym}	(Not available)	Depositor
$\langle I/\sigma(I) \rangle$ ¹	0.98 (at 2.22Å)	Xtrriage
Refinement program	PHENIX 1.16_3549	Depositor
R, R_{free}	0.176 , 0.193 0.176 , 0.194	Depositor DCC
R_{free} test set	1934 reflections (1.99%)	wwPDB-VP
Wilson B-factor (Å ²)	55.9	Xtrriage
Anisotropy	0.081	Xtrriage
Bulk solvent k_{sol} (e/Å ³), B_{sol} (Å ²)	0.38 , 52.7	EDS
L-test for twinning ²	$\langle L \rangle = 0.47$, $\langle L^2 \rangle = 0.30$	Xtrriage
Estimated twinning fraction	No twinning to report.	Xtrriage
F_o, F_c correlation	0.97	EDS
Total number of atoms	20987	wwPDB-VP
Average B, all atoms (Å ²)	87.0	wwPDB-VP

Xtrriage's analysis on translational NCS is as follows: *The largest off-origin peak in the Patterson function is 2.13% of the height of the origin peak. No significant pseudotranslation is detected.*

¹Intensities estimated from amplitudes.

²Theoretical values of $\langle |L| \rangle$, $\langle L^2 \rangle$ for acentric reflections are 0.5, 0.333 respectively for untwinned datasets, and 0.375, 0.2 for perfectly twinned datasets.

5 Model quality [i](#)

5.1 Standard geometry [i](#)

Bond lengths and bond angles in the following residue types are not validated in this section: SEP, G6Q

The Z score for a bond length (or angle) is the number of standard deviations the observed value is removed from the expected value. A bond length (or angle) with $|Z| > 5$ is considered an outlier worth inspection. RMSZ is the root-mean-square of all Z scores of the bond lengths (or angles).

Mol	Chain	Bond lengths		Bond angles	
		RMSZ	# Z >5	RMSZ	# Z >5
1	A	0.24	0/5277	0.43	0/7121
1	B	0.24	0/5265	0.42	0/7106
All	All	0.24	0/10542	0.43	0/14227

There are no bond length outliers.

There are no bond angle outliers.

There are no chirality outliers.

There are no planarity outliers.

5.2 Too-close contacts [i](#)

In the following table, the Non-H and H(model) columns list the number of non-hydrogen atoms and hydrogen atoms in the chain respectively. The H(added) column lists the number of hydrogen atoms added and optimized by MolProbity. The Clashes column lists the number of clashes within the asymmetric unit, whereas Symm-Clashes lists symmetry-related clashes.

Mol	Chain	Non-H	H(model)	H(added)	Clashes	Symm-Clashes
1	A	5200	5203	5198	7	0
1	B	5177	5188	5185	8	0
2	A	16	13	11	0	0
2	B	16	13	11	2	0
3	A	10	8	5	0	0
4	A	87	0	0	0	0
4	B	56	0	0	0	0
All	All	10562	10425	10410	15	0

The all-atom clashscore is defined as the number of clashes found per 1000 atoms (including hydrogen atoms). The all-atom clashscore for this structure is 1.

All (15) close contacts within the same asymmetric unit are listed below, sorted by their clash magnitude.

Atom-1	Atom-2	Interatomic distance (Å)	Clash overlap (Å)
1:B:246:CYS:SG	1:B:290:SER:HB3	2.18	0.83
1:A:640:SER:N	1:A:645:GLN:OE1	2.22	0.72
1:B:426:THR:OG1	2:B:701:G6Q:O3P	2.10	0.67
1:B:558:LYS:NZ	2:B:701:G6Q:O1	2.28	0.66
1:A:621:ASP:OD1	1:A:622:LYS:N	2.36	0.59
1:B:642:ASP:OD1	1:B:643:CYS:N	2.48	0.47
1:A:2:CYS:N	1:A:123:ASN:OD1	2.50	0.44
1:A:595:ARG:NH2	1:A:623:GLU:O	2.51	0.44
1:A:419:PHE:CZ	1:A:433:LEU:HA	2.53	0.43
1:A:642:ASP:OD2	1:A:643:CYS:N	2.51	0.43
1:B:419:PHE:CZ	1:B:433:LEU:HA	2.53	0.43
1:A:533:GLU:OE1	1:A:633:ARG:NE	2.52	0.42
1:B:594:MET:HE1	1:B:619:ILE:HG22	2.02	0.41
1:B:11:HIS:N	1:B:86:ASP:O	2.54	0.41
1:B:623:GLU:O	1:B:625:THR:N	2.54	0.41

There are no symmetry-related clashes.

5.3 Torsion angles [i](#)

5.3.1 Protein backbone [i](#)

In the following table, the Percentiles column shows the percent Ramachandran outliers of the chain as a percentile score with respect to all X-ray entries followed by that with respect to entries of similar resolution.

The Analysed column shows the number of residues for which the backbone conformation was analysed, and the total number of residues.

Mol	Chain	Analysed	Favoured	Allowed	Outliers	Percentiles
1	A	649/686 (95%)	635 (98%)	14 (2%)	0	100 100
1	B	649/686 (95%)	620 (96%)	27 (4%)	2 (0%)	41 45
All	All	1298/1372 (95%)	1255 (97%)	41 (3%)	2 (0%)	47 54

All (2) Ramachandran outliers are listed below:

Mol	Chain	Res	Type
1	B	677	SER

Continued on next page...

Continued from previous page...

Mol	Chain	Res	Type
1	B	250	VAL

5.3.2 Protein sidechains [i](#)

In the following table, the Percentiles column shows the percent sidechain outliers of the chain as a percentile score with respect to all X-ray entries followed by that with respect to entries of similar resolution.

The Analysed column shows the number of residues for which the sidechain conformation was analysed, and the total number of residues.

Mol	Chain	Analysed	Rotameric	Outliers	Percentiles
1	A	571/599 (95%)	568 (100%)	3 (0%)	88 94
1	B	569/599 (95%)	564 (99%)	5 (1%)	78 87
All	All	1140/1198 (95%)	1132 (99%)	8 (1%)	84 91

All (8) residues with a non-rotameric sidechain are listed below:

Mol	Chain	Res	Type
1	A	170	PHE
1	A	205	ASP
1	A	604	ASN
1	B	79	MET
1	B	170	PHE
1	B	205	ASP
1	B	482	PHE
1	B	604	ASN

Sometimes sidechains can be flipped to improve hydrogen bonding and reduce clashes. There are no such sidechains identified.

5.3.3 RNA [i](#)

There are no RNA molecules in this entry.

5.4 Non-standard residues in protein, DNA, RNA chains [i](#)

1 non-standard protein/DNA/RNA residue is modelled in this entry.

In the following table, the Counts columns list the number of bonds (or angles) for which Mogul statistics could be retrieved, the number of bonds (or angles) that are observed in the model and

the number of bonds (or angles) that are defined in the Chemical Component Dictionary. The Link column lists molecule types, if any, to which the group is linked. The Z score for a bond length (or angle) is the number of standard deviations the observed value is removed from the expected value. A bond length (or angle) with $|Z| > 2$ is considered an outlier worth inspection. RMSZ is the root-mean-square of all Z scores of the bond lengths (or angles).

Mol	Type	Chain	Res	Link	Bond lengths			Bond angles		
					Counts	RMSZ	# Z > 2	Counts	RMSZ	# Z > 2
1	SEP	A	243	1	8,9,10	0.56	0	8,12,14	0.88	0

In the following table, the Chirals column lists the number of chiral outliers, the number of chiral centers analysed, the number of these observed in the model and the number defined in the Chemical Component Dictionary. Similar counts are reported in the Torsion and Rings columns. '-' means no outliers of that kind were identified.

Mol	Type	Chain	Res	Link	Chirals	Torsions	Rings
1	SEP	A	243	1	-	4/5/8/10	-

There are no bond length outliers.

There are no bond angle outliers.

There are no chirality outliers.

All (4) torsion outliers are listed below:

Mol	Chain	Res	Type	Atoms
1	A	243	SEP	N-CA-CB-OG
1	A	243	SEP	CB-OG-P-O2P
1	A	243	SEP	CB-OG-P-O3P
1	A	243	SEP	CB-OG-P-O1P

There are no ring outliers.

No monomer is involved in short contacts.

5.5 Carbohydrates [i](#)

There are no monosaccharides in this entry.

5.6 Ligand geometry [i](#)

3 ligands are modelled in this entry.

In the following table, the Counts columns list the number of bonds (or angles) for which Mogul statistics could be retrieved, the number of bonds (or angles) that are observed in the model and

the number of bonds (or angles) that are defined in the Chemical Component Dictionary. The Link column lists molecule types, if any, to which the group is linked. The Z score for a bond length (or angle) is the number of standard deviations the observed value is removed from the expected value. A bond length (or angle) with $|Z| > 2$ is considered an outlier worth inspection. RMSZ is the root-mean-square of all Z scores of the bond lengths (or angles).

Mol	Type	Chain	Res	Link	Bond lengths			Bond angles		
					Counts	RMSZ	# Z > 2	Counts	RMSZ	# Z > 2
2	G6Q	A	701	-	14,15,15	0.53	0	20,21,21	0.67	0
2	G6Q	B	701	-	14,15,15	0.42	0	20,21,21	0.66	0
3	GLU	A	702	-	2,9,9	0.77	0	2,11,11	0.31	0

In the following table, the Chirals column lists the number of chiral outliers, the number of chiral centers analysed, the number of these observed in the model and the number defined in the Chemical Component Dictionary. Similar counts are reported in the Torsion and Rings columns. '-' means no outliers of that kind were identified.

Mol	Type	Chain	Res	Link	Chirals	Torsions	Rings
2	G6Q	A	701	-	-	4/18/20/20	-
2	G6Q	B	701	-	-	9/18/20/20	-
3	GLU	A	702	-	-	0/3/9/9	-

There are no bond length outliers.

There are no bond angle outliers.

There are no chirality outliers.

All (13) torsion outliers are listed below:

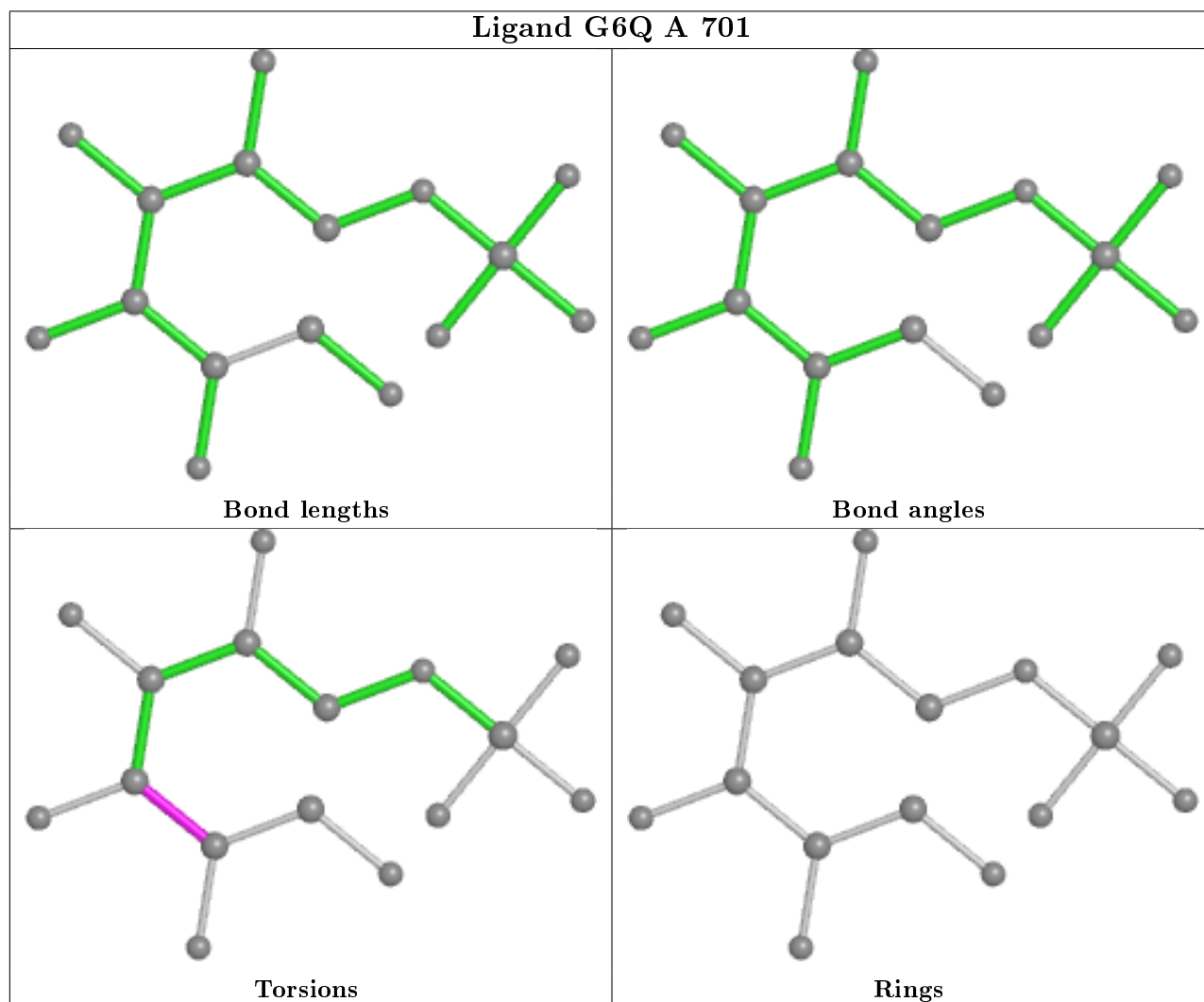
Mol	Chain	Res	Type	Atoms
2	A	701	G6Q	C1-C2-C3-C4
2	A	701	G6Q	C1-C2-C3-O3
2	A	701	G6Q	O2-C2-C3-C4
2	A	701	G6Q	O2-C2-C3-O3
2	B	701	G6Q	C1-C2-C3-C4
2	B	701	G6Q	O2-C2-C3-C4
2	B	701	G6Q	O2-C2-C3-O3
2	B	701	G6Q	C4-C5-C6-O6
2	B	701	G6Q	O5-C5-C6-O6
2	B	701	G6Q	C6-O6-P-O1P
2	B	701	G6Q	C6-O6-P-O2P
2	B	701	G6Q	C6-O6-P-O3P
2	B	701	G6Q	C1-C2-C3-O3

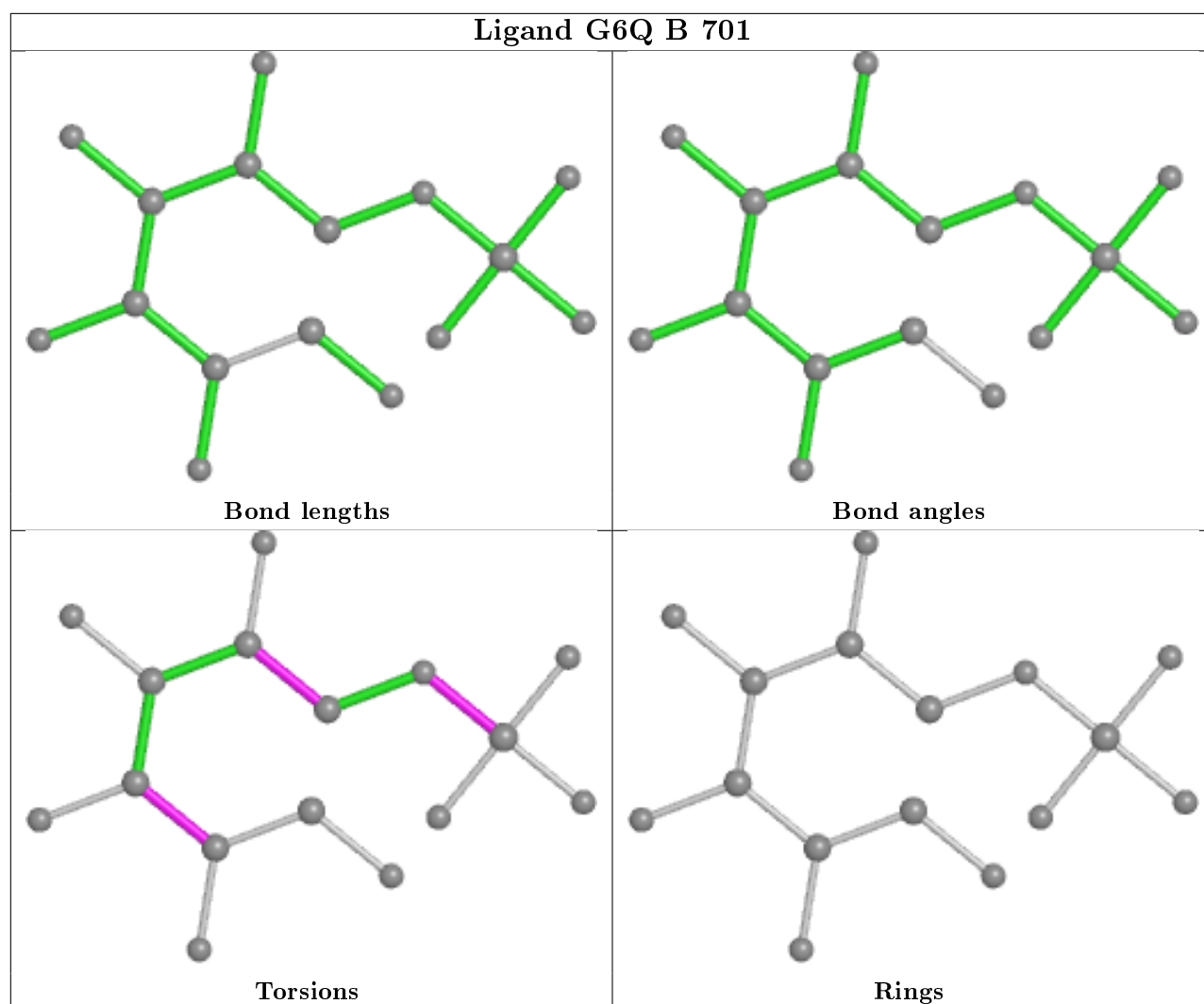
There are no ring outliers.

1 monomer is involved in 2 short contacts:

Mol	Chain	Res	Type	Clashes	Symm-Clashes
2	B	701	G6Q	2	0

The following is a two-dimensional graphical depiction of Mogul quality analysis of bond lengths, bond angles, torsion angles, and ring geometry for all instances of the Ligand of Interest. In addition, ligands with molecular weight > 250 and outliers as shown on the validation Tables will also be included. For torsion angles, if less than 5% of the Mogul distribution of torsion angles is within 10 degrees of the torsion angle in question, then that torsion angle is considered an outlier. Any bond that is central to one or more torsion angles identified as an outlier by Mogul will be highlighted in the graph. For rings, the root-mean-square deviation (RMSD) between the ring in question and similar rings identified by Mogul is calculated over all ring torsion angles. If the average RMSD is greater than 60 degrees and the minimal RMSD between the ring in question and any Mogul-identified rings is also greater than 60 degrees, then that ring is considered an outlier. The outliers are highlighted in purple. The color gray indicates Mogul did not find sufficient equivalents in the CSD to analyse the geometry.





5.7 Other polymers [i](#)

There are no such residues in this entry.

5.8 Polymer linkage issues [i](#)

There are no chain breaks in this entry.

6 Fit of model and data

6.1 Protein, DNA and RNA chains

In the following table, the column labelled ‘#RSRZ> 2’ contains the number (and percentage) of RSRZ outliers, followed by percent RSRZ outliers for the chain as percentile scores relative to all X-ray entries and entries of similar resolution. The OWAB column contains the minimum, median, 95th percentile and maximum values of the occupancy-weighted average B-factor per residue. The column labelled ‘Q< 0.9’ lists the number of (and percentage) of residues with an average occupancy less than 0.9.

Mol	Chain	Analysed	<RSRZ>	#RSRZ>2	OWAB(Å ²)	Q<0.9
1	A	657/686 (95%)	0.33	12 (1%) 68 66	41, 62, 113, 149	0
1	B	655/686 (95%)	0.80	84 (12%) 3 3	46, 77, 154, 233	0
All	All	1312/1372 (95%)	0.56	96 (7%) 15 13	41, 68, 139, 233	0

All (96) RSRZ outliers are listed below:

Mol	Chain	Res	Type	RSRZ
1	B	217	LEU	7.1
1	B	247	LEU	6.7
1	B	250	VAL	6.5
1	B	54	ALA	6.2
1	B	73	VAL	5.8
1	B	255	VAL	5.7
1	B	50	TRP	5.4
1	B	257	TYR	5.3
1	B	254	ALA	5.2
1	B	225	LEU	4.9
1	B	246	CYS	4.8
1	B	77	GLN	4.8
1	B	226	TYR	4.7
1	A	678	VAL	4.7
1	B	259	PHE	4.5
1	A	677	SER	4.5
1	B	51	GLU	4.4
1	B	222	ILE	4.4
1	B	216	LYS	4.3
1	B	118	PHE	4.3
1	B	75	LYS	4.1
1	B	47	ASP	4.1
1	B	681	GLU	4.0
1	A	241	VAL	3.9

Continued on next page...

Continued from previous page...

Mol	Chain	Res	Type	RSRZ
1	B	164	GLU	3.8
1	B	224	ILE	3.8
1	B	55	CYS	3.8
1	A	672	ARG	3.7
1	B	159	MET	3.7
1	B	52	ALA	3.7
1	B	289	LEU	3.5
1	B	309	LEU	3.5
1	B	155	LEU	3.4
1	B	273	VAL	3.4
1	B	53	ASN	3.3
1	B	209	ILE	3.3
1	B	142	ASP	3.3
1	B	48	LYS	3.2
1	B	8	LEU	3.2
1	B	170	PHE	3.1
1	B	284	VAL	3.1
1	B	79	MET	3.1
1	B	78	ASP	3.1
1	A	2	CYS	3.1
1	B	291	ILE	3.1
1	B	6	ALA	3.0
1	B	19	ILE	3.0
1	B	308	THR	3.0
1	B	91	ILE	2.9
1	B	119	ILE	2.9
1	B	125	ILE	2.8
1	B	173	LEU	2.7
1	B	57	ILE	2.7
1	B	42	PHE	2.7
1	B	153	ALA	2.7
1	B	174	VAL	2.7
1	B	44	GLY	2.7
1	B	80	ASP	2.7
1	B	81	LEU	2.6
1	B	49	ASP	2.6
1	B	56	LYS	2.5
1	B	20	LEU	2.5
1	B	274	ILE	2.5
1	A	79	MET	2.4
1	B	251	GLU	2.4
1	B	258	TYR	2.4

Continued on next page...

Continued from previous page...

Mol	Chain	Res	Type	RSRZ
1	B	215	HIS	2.4
1	B	152	ILE	2.4
1	B	66	VAL	2.4
1	A	54	ALA	2.3
1	B	90	GLY	2.3
1	B	248	PHE	2.3
1	B	221	HIS	2.3
1	B	253	LYS	2.2
1	B	60	ILE	2.2
1	B	167	ASP	2.2
1	B	121	ILE	2.2
1	B	156	VAL	2.2
1	B	266	VAL	2.2
1	B	249	PRO	2.2
1	B	120	VAL	2.1
1	B	198	ALA	2.1
1	A	96	TRP	2.1
1	A	294	ILE	2.1
1	B	192	VAL	2.1
1	A	134	LYS	2.1
1	B	25	LYS	2.1
1	B	310	GLN	2.1
1	B	213	SER	2.1
1	B	76	GLN	2.1
1	B	7	TYR	2.1
1	B	199	VAL	2.0
1	A	349	TYR	2.0
1	B	275	PHE	2.0
1	A	49	ASP	2.0
1	B	158	TYR	2.0

6.2 Non-standard residues in protein, DNA, RNA chains [i](#)

In the following table, the Atoms column lists the number of modelled atoms in the group and the number defined in the chemical component dictionary. The B-factors column lists the minimum, median, 95th percentile and maximum values of B factors of atoms in the group. The column labelled 'Q< 0.9' lists the number of atoms with occupancy less than 0.9.

Mol	Type	Chain	Res	Atoms	RSCC	RSR	B-factors(Å ²)	Q<0.9
1	SEP	A	243	10/11	0.85	0.23	136,163,186,186	0

6.3 Carbohydrates [i](#)

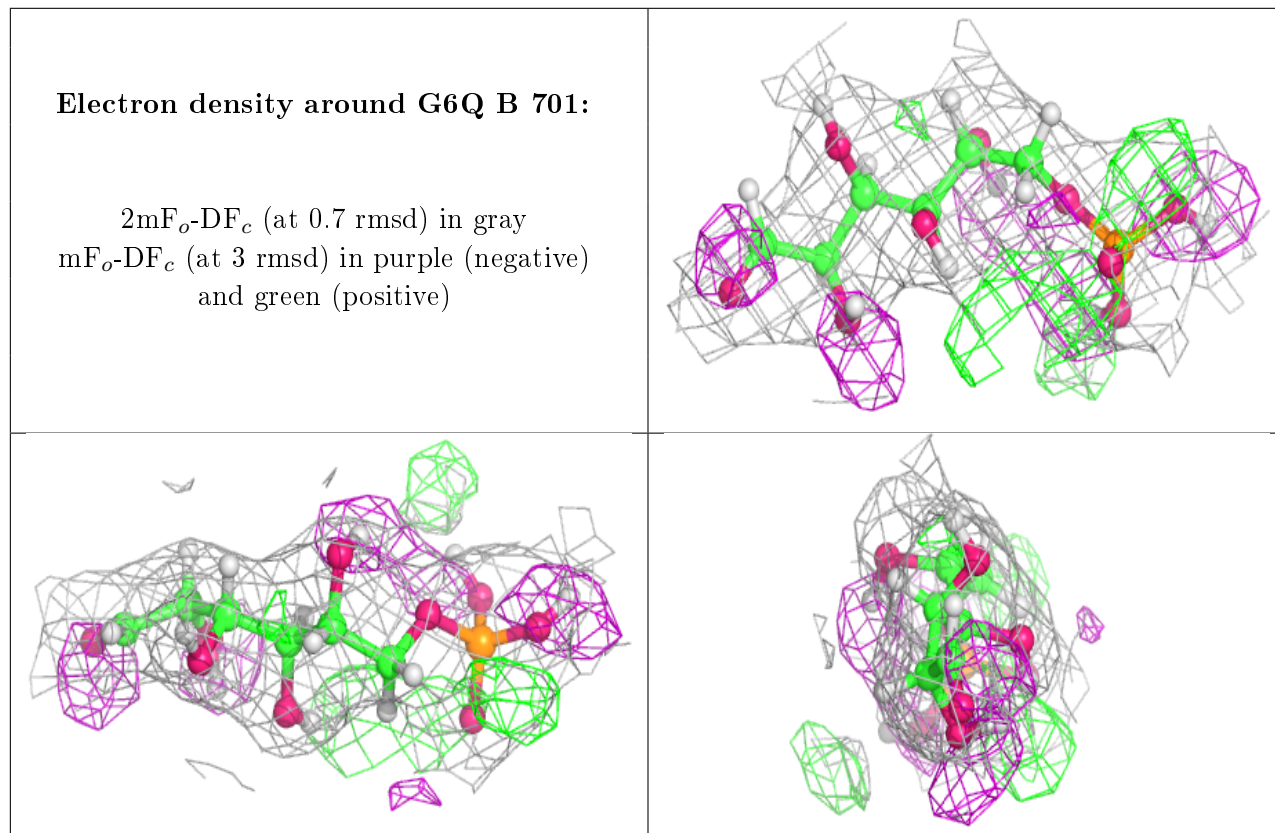
There are no monosaccharides in this entry.

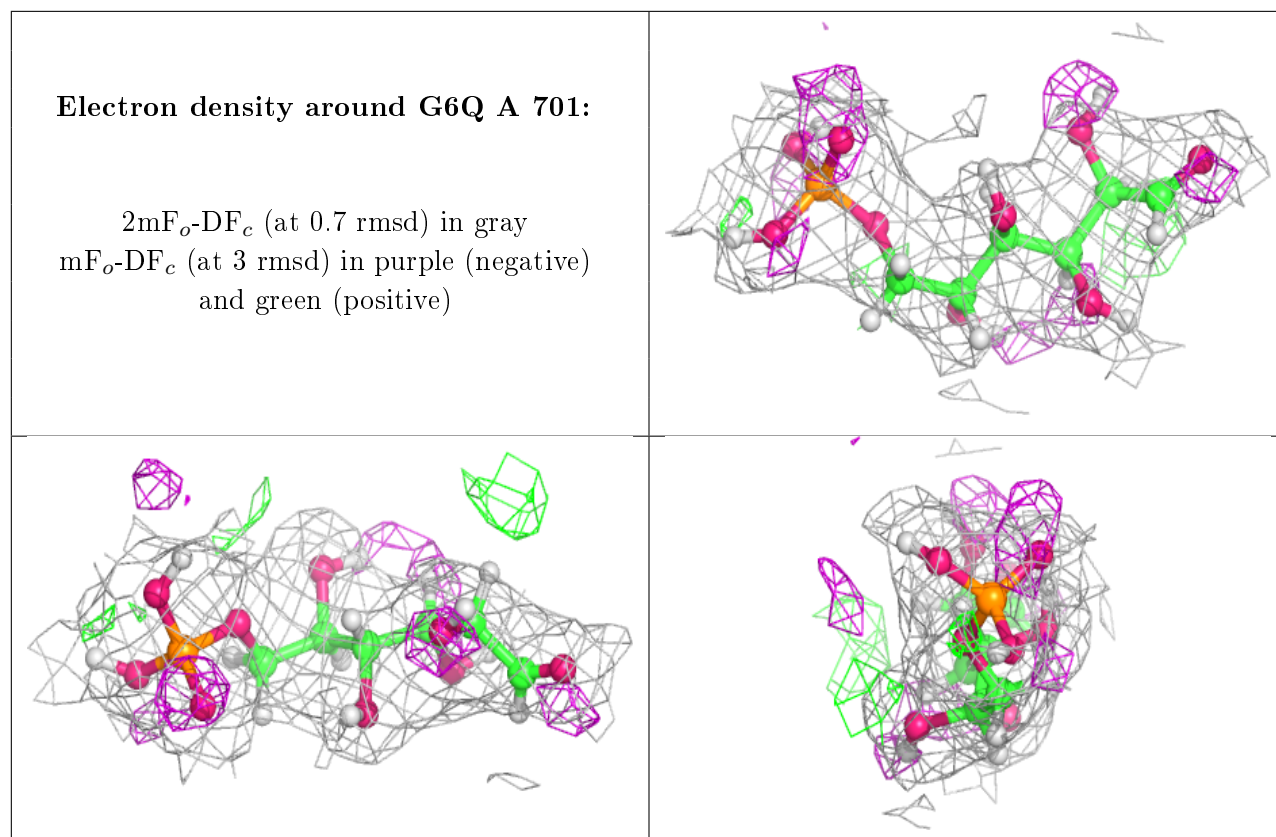
6.4 Ligands [i](#)

In the following table, the Atoms column lists the number of modelled atoms in the group and the number defined in the chemical component dictionary. The B-factors column lists the minimum, median, 95th percentile and maximum values of B factors of atoms in the group. The column labelled 'Q< 0.9' lists the number of atoms with occupancy less than 0.9.

Mol	Type	Chain	Res	Atoms	RSCC	RSR	B-factors(Å ²)	Q<0.9
3	GLU	A	702	10/10	0.92	0.16	84,90,94,97	0
2	G6Q	B	701	16/16	0.93	0.20	40,58,74,76	0
2	G6Q	A	701	16/16	0.97	0.17	42,50,59,65	0

The following is a graphical depiction of the model fit to experimental electron density of all instances of the Ligand of Interest. In addition, ligands with molecular weight > 250 and outliers as shown on the geometry validation Tables will also be included. Each fit is shown from different orientation to approximate a three-dimensional view.





6.5 Other polymers [i](#)

There are no such residues in this entry.