



Full wwPDB X-ray Structure Validation Report ⓘ

Sep 29, 2024 – 04:03 AM EDT

PDB ID : 1NFY
Title : CRYSTAL STRUCTURE OF HUMAN COAGULATION FACTOR XA
COMPLEXED WITH RPR200095
Authors : Maignan, S.; Guilloteau, J.P.
Deposited on : 2002-12-16
Resolution : 2.10 Å(reported)

This is a Full wwPDB X-ray Structure Validation Report for a publicly released PDB entry.

We welcome your comments at validation@mail.wwpdb.org

A user guide is available at

<https://www.wwpdb.org/validation/2017/XrayValidationReportHelp>

with specific help available everywhere you see the ⓘ symbol.

The types of validation reports are described at

<http://www.wwpdb.org/validation/2017/FAQs#types>.

The following versions of software and data (see [references ⓘ](#)) were used in the production of this report:

MolProbity : 4.02b-467
Mogul : 2022.3.0, CSD as543be (2022)
Xtrriage (Phenix) : **NOT EXECUTED**
EDS : **NOT EXECUTED**
buster-report : 1.1.7 (2018)
Percentile statistics : 20231227.v01 (using entries in the PDB archive December 27th 2023)
Ideal geometry (proteins) : Engh & Huber (2001)
Ideal geometry (DNA, RNA) : Parkinson et al. (1996)
Validation Pipeline (wwPDB-VP) : 2.39

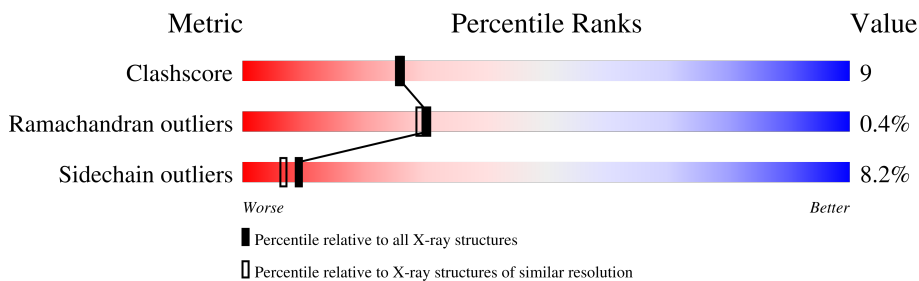
1 Overall quality at a glance

The following experimental techniques were used to determine the structure:

X-RAY DIFFRACTION

The reported resolution of this entry is 2.10 Å.

Percentile scores (ranging between 0-100) for global validation metrics of the entry are shown in the following graphic. The table shows the number of entries on which the scores are based.



Metric	Whole archive (#Entries)	Similar resolution (#Entries, resolution range(Å))
Clashscore	180529	6893 (2.10-2.10)
Ramachandran outliers	177936	6839 (2.10-2.10)
Sidechain outliers	177891	6840 (2.10-2.10)

The table below summarises the geometric issues observed across the polymeric chains and their fit to the electron density. The red, orange, yellow and green segments of the lower bar indicate the fraction of residues that contain outliers for ≥ 3 , 2, 1 and 0 types of geometric quality criteria respectively. A grey segment represents the fraction of residues that are not modelled. The numeric value for each fraction is indicated below the corresponding segment, with a dot representing fractions $\leq 5\%$.

Note EDS was not executed.

Mol	Chain	Length	Quality of chain
1	A	254	
2	B	134	

2 Entry composition

There are 5 unique types of molecules in this entry. The entry contains 2445 atoms, of which 0 are hydrogens and 0 are deuteriums.

In the tables below, the ZeroOcc column contains the number of atoms modelled with zero occupancy, the AltConf column contains the number of residues with at least one atom in alternate conformation and the Trace column contains the number of residues modelled with at most 2 atoms.

- Molecule 1 is a protein called Coagulation factor XA, heavy chain.

Mol	Chain	Residues	Atoms					ZeroOcc	AltConf	Trace
			Total	C	N	O	S			
1	A	234	1852	1166	323	349	14	50	0	0

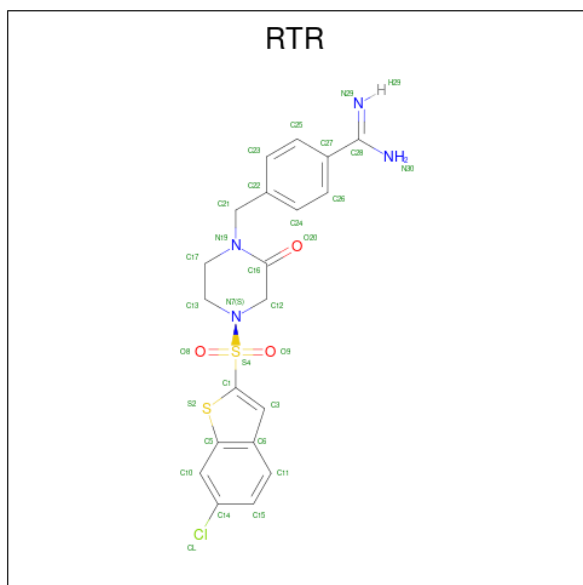
- Molecule 2 is a protein called Coagulation factor XA, light chain.

Mol	Chain	Residues	Atoms					ZeroOcc	AltConf	Trace
			Total	C	N	O	S			
2	B	53	395	237	70	81	7	18	0	0

- Molecule 3 is CALCIUM ION (three-letter code: CA) (formula: Ca).

Mol	Chain	Residues	Atoms		ZeroOcc	AltConf
3	A	1	Total	Ca	0	0
			1	1		

- Molecule 4 is 4-({4-[(6-CHLORO-1-BENZOTHIEN-2-YL)SULFONYL]-2-OXOPIPERAZI N-1-YL}METHYL)BENZENECARBOXIMIDAMIDE (three-letter code: RTR) (formula: C₂₀H₁₉ClN₄O₃S₂).



Mol	Chain	Residues	Atoms					ZeroOcc	AltConf	
			Total	C	Cl	N	O			S
4	A	1	30	20	1	4	3	2	0	0

- Molecule 5 is water.

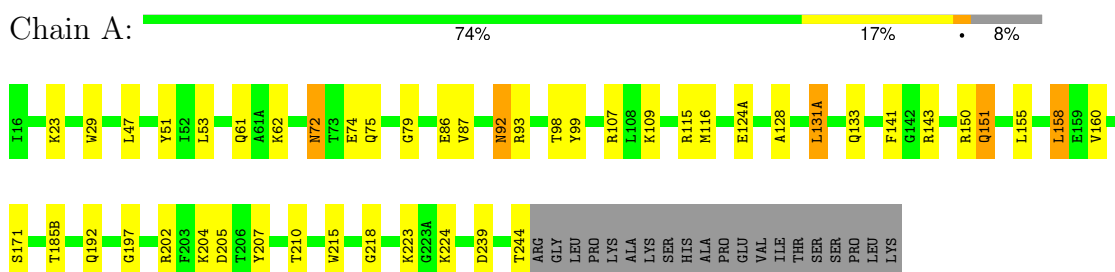
Mol	Chain	Residues	Atoms		ZeroOcc	AltConf
5	A	129	Total	O	0	0
			129	129		
5	B	38	Total	O	0	0
			38	38		

3 Residue-property plots

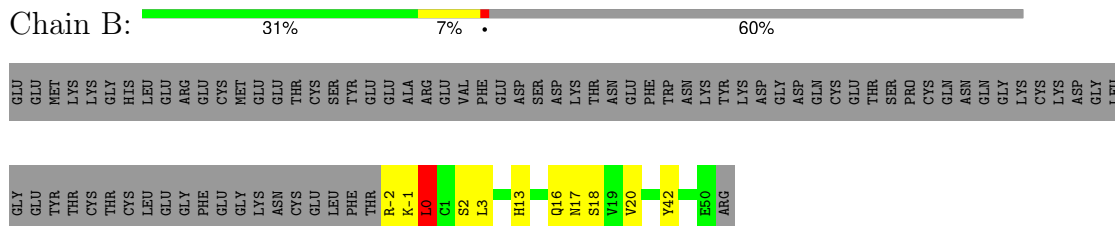
These plots are drawn for all protein, RNA, DNA and oligosaccharide chains in the entry. The first graphic for a chain summarises the proportions of the various outlier classes displayed in the second graphic. The second graphic shows the sequence view annotated by issues in geometry. Residues are color-coded according to the number of geometric quality criteria for which they contain at least one outlier: green = 0, yellow = 1, orange = 2 and red = 3 or more. Stretches of 2 or more consecutive residues without any outlier are shown as a green connector. Residues present in the sample, but not in the model, are shown in grey.

Note EDS was not executed.

- Molecule 1: Coagulation factor XA, heavy chain



- Molecule 2: Coagulation factor XA, light chain



4 Data and refinement statistics

Xtrriage (Phenix) and EDS were not executed - this section is therefore incomplete.

Property	Value	Source
Space group	P 21 21 21	Depositor
Cell constants a, b, c, α , β , γ	55.78Å 71.83Å 79.05Å 90.00° 90.00° 90.00°	Depositor
Resolution (Å)	25.00 – 2.10	Depositor
% Data completeness (in resolution range)	(Not available) (25.00-2.10)	Depositor
R_{merge}	0.06	Depositor
R_{sym}	(Not available)	Depositor
Refinement program	X-PLOR 98.0	Depositor
R, R_{free}	0.203 , (Not available)	Depositor
Estimated twinning fraction	No twinning to report.	Xtrriage
Total number of atoms	2445	wwPDB-VP
Average B, all atoms (Å ²)	22.0	wwPDB-VP

5 Model quality [i](#)

5.1 Standard geometry [i](#)

Bond lengths and bond angles in the following residue types are not validated in this section: CA, RTR

The Z score for a bond length (or angle) is the number of standard deviations the observed value is removed from the expected value. A bond length (or angle) with $|Z| > 5$ is considered an outlier worth inspection. RMSZ is the root-mean-square of all Z scores of the bond lengths (or angles).

Mol	Chain	Bond lengths		Bond angles	
		RMSZ	# Z >5	RMSZ	# Z >5
1	A	0.36	0/1890	0.62	0/2546
2	B	0.31	0/401	0.57	0/541
All	All	0.35	0/2291	0.61	0/3087

There are no bond length outliers.

There are no bond angle outliers.

There are no chirality outliers.

There are no planarity outliers.

5.2 Too-close contacts [i](#)

In the following table, the Non-H and H(model) columns list the number of non-hydrogen atoms and hydrogen atoms in the chain respectively. The H(added) column lists the number of hydrogen atoms added and optimized by MolProbity. The Clashes column lists the number of clashes within the asymmetric unit, whereas Symm-Clashes lists symmetry-related clashes.

Mol	Chain	Non-H	H(model)	H(added)	Clashes	Symm-Clashes
1	A	1852	0	1808	33	0
2	B	395	0	365	10	0
3	A	1	0	0	0	0
4	A	30	0	18	2	0
5	A	129	0	0	1	0
5	B	38	0	0	0	0
All	All	2445	0	2191	40	0

The all-atom clashscore is defined as the number of clashes found per 1000 atoms (including hydrogen atoms). The all-atom clashscore for this structure is 9.

All (40) close contacts within the same asymmetric unit are listed below, sorted by their clash

magnitude.

Atom-1	Atom-2	Interatomic distance (Å)	Clash overlap (Å)
1:A:86:GLU:HG2	1:A:87:VAL:HG23	1.58	0.86
1:A:185(B):THR:HG22	1:A:223:LYS:HG2	1.67	0.75
1:A:72:ASN:ND2	1:A:74:GLU:H	1.85	0.74
1:A:92:ASN:HD22	1:A:93:ARG:HG3	1.56	0.71
1:A:92:ASN:ND2	1:A:93:ARG:HG3	2.06	0.70
1:A:72:ASN:HD21	1:A:74:GLU:HB2	1.59	0.67
1:A:124(A):GLU:OE1	2:B:13:HIS:HE1	1.81	0.63
1:A:72:ASN:HD22	1:A:74:GLU:H	1.47	0.62
1:A:98:THR:O	1:A:99:TYR:HB2	2.00	0.61
1:A:158:LEU:HD13	1:A:160:VAL:HG13	1.82	0.60
2:B:-1:LYS:HD2	2:B:0:LEU:HD22	1.82	0.59
1:A:124(A):GLU:OE1	2:B:13:HIS:CE1	2.57	0.56
1:A:72:ASN:HD22	1:A:72:ASN:C	2.09	0.56
2:B:13:HIS:HB2	2:B:20:VAL:CG1	2.36	0.56
1:A:171:SER:O	1:A:224:LYS:HE2	2.09	0.53
2:B:0:LEU:H	2:B:0:LEU:HD13	1.73	0.53
1:A:128:ALA:HA	1:A:131(A):LEU:HB2	1.91	0.51
1:A:158:LEU:HD13	1:A:160:VAL:CG1	2.41	0.51
1:A:202:ARG:HB2	1:A:207:TYR:CE2	2.47	0.50
1:A:115:ARG:NH1	1:A:116:MET:O	2.46	0.48
1:A:47:LEU:HD11	1:A:53:LEU:HB2	1.95	0.48
1:A:79:GLY:HA3	1:A:115:ARG:NH1	2.28	0.48
1:A:141:PHE:CZ	1:A:155:LEU:HB2	2.48	0.47
1:A:197:GLY:HA3	5:A:312:HOH:O	2.15	0.46
2:B:20:VAL:O	2:B:20:VAL:HG13	2.16	0.45
1:A:141:PHE:O	1:A:151:GLN:HG3	2.16	0.45
1:A:215:TRP:CE3	4:A:301:RTR:H25	2.51	0.45
2:B:13:HIS:HB2	2:B:20:VAL:HG13	1.97	0.45
1:A:224:LYS:HD3	1:A:224:LYS:HA	1.73	0.44
1:A:92:ASN:HD22	1:A:93:ARG:N	2.15	0.43
1:A:115:ARG:HA	2:B:42:TYR:CZ	2.52	0.43
2:B:0:LEU:HD13	2:B:0:LEU:N	2.34	0.43
1:A:143:ARG:NH2	1:A:192:GLN:NE2	2.67	0.43
1:A:51:TYR:CE1	1:A:107:ARG:HG3	2.54	0.42
2:B:-1:LYS:O	2:B:2:SER:HB2	2.20	0.42
1:A:86:GLU:HB2	1:A:109:LYS:CG	2.50	0.42
1:A:23:LYS:HA	1:A:23:LYS:HD3	1.83	0.41
1:A:86:GLU:HB2	1:A:109:LYS:HG2	2.02	0.41
1:A:218:GLY:O	4:A:301:RTR:H3	2.20	0.41
1:A:204:LYS:O	1:A:205:ASP:HB2	2.21	0.40

There are no symmetry-related clashes.

5.3 Torsion angles [i](#)

5.3.1 Protein backbone [i](#)

In the following table, the Percentiles column shows the percent Ramachandran outliers of the chain as a percentile score with respect to all X-ray entries followed by that with respect to entries of similar resolution.

The Analysed column shows the number of residues for which the backbone conformation was analysed, and the total number of residues.

Mol	Chain	Analysed	Favoured	Allowed	Outliers	Percentiles	
1	A	232/254 (91%)	221 (95%)	11 (5%)	0	100	100
2	B	51/134 (38%)	48 (94%)	2 (4%)	1 (2%)	6	3
All	All	283/388 (73%)	269 (95%)	13 (5%)	1 (0%)	30	29

All (1) Ramachandran outliers are listed below:

Mol	Chain	Res	Type
2	B	0	LEU

5.3.2 Protein sidechains [i](#)

In the following table, the Percentiles column shows the percent sidechain outliers of the chain as a percentile score with respect to all X-ray entries followed by that with respect to entries of similar resolution.

The Analysed column shows the number of residues for which the sidechain conformation was analysed, and the total number of residues.

Mol	Chain	Analysed	Rotameric	Outliers	Percentiles	
1	A	199/216 (92%)	185 (93%)	14 (7%)	12	10
2	B	45/118 (38%)	39 (87%)	6 (13%)	3	1
All	All	244/334 (73%)	224 (92%)	20 (8%)	9	7

All (20) residues with a non-rotameric sidechain are listed below:

Mol	Chain	Res	Type
1	A	29	TRP
1	A	61	GLN

Continued on next page...

Continued from previous page...

Mol	Chain	Res	Type
1	A	62	LYS
1	A	72	ASN
1	A	75	GLN
1	A	92	ASN
1	A	131(A)	LEU
1	A	133	GLN
1	A	150	ARG
1	A	151	GLN
1	A	158	LEU
1	A	210	THR
1	A	239	ASP
1	A	244	THR
2	B	-2	ARG
2	B	0	LEU
2	B	3	LEU
2	B	16	GLN
2	B	17	ASN
2	B	18	SER

Sometimes sidechains can be flipped to improve hydrogen bonding and reduce clashes. All (7) such sidechains are listed below:

Mol	Chain	Res	Type
1	A	30	GLN
1	A	38	ASN
1	A	72	ASN
1	A	92	ASN
1	A	133	GLN
1	A	192	GLN
2	B	13	HIS

5.3.3 RNA [i](#)

There are no RNA molecules in this entry.

5.4 Non-standard residues in protein, DNA, RNA chains [i](#)

There are no non-standard protein/DNA/RNA residues in this entry.

5.5 Carbohydrates [i](#)

There are no oligosaccharides in this entry.

5.6 Ligand geometry [i](#)

Of 2 ligands modelled in this entry, 1 is monoatomic - leaving 1 for Mogul analysis.

In the following table, the Counts columns list the number of bonds (or angles) for which Mogul statistics could be retrieved, the number of bonds (or angles) that are observed in the model and the number of bonds (or angles) that are defined in the Chemical Component Dictionary. The Link column lists molecule types, if any, to which the group is linked. The Z score for a bond length (or angle) is the number of standard deviations the observed value is removed from the expected value. A bond length (or angle) with $|Z| > 2$ is considered an outlier worth inspection. RMSZ is the root-mean-square of all Z scores of the bond lengths (or angles).

Mol	Type	Chain	Res	Link	Bond lengths			Bond angles		
					Counts	RMSZ	# Z > 2	Counts	RMSZ	# Z > 2
4	RTR	A	301	-	30,33,33	3.83	8 (26%)	34,49,49	2.07	5 (14%)

In the following table, the Chirals column lists the number of chiral outliers, the number of chiral centers analysed, the number of these observed in the model and the number defined in the Chemical Component Dictionary. Similar counts are reported in the Torsion and Rings columns. '-' means no outliers of that kind were identified.

Mol	Type	Chain	Res	Link	Chirals	Torsions	Rings
4	RTR	A	301	-	-	0/14/33/33	0/4/4/4

All (8) bond length outliers are listed below:

Mol	Chain	Res	Type	Atoms	Z	Observed(Å)	Ideal(Å)
4	A	301	RTR	C13-N7	17.09	1.65	1.47
4	A	301	RTR	S4-N7	8.20	1.75	1.63
4	A	301	RTR	C16-N19	4.60	1.40	1.34
4	A	301	RTR	C1-S4	-2.81	1.72	1.76
4	A	301	RTR	C10-C14	2.74	1.41	1.36
4	A	301	RTR	C11-C15	2.58	1.42	1.36
4	A	301	RTR	C25-C27	2.21	1.42	1.39
4	A	301	RTR	C15-C14	2.12	1.42	1.38

All (5) bond angle outliers are listed below:

Mol	Chain	Res	Type	Atoms	Z	Observed(°)	Ideal(°)
4	A	301	RTR	C17-C13-N7	-10.01	98.33	108.97

Continued on next page...

Continued from previous page...

Mol	Chain	Res	Type	Atoms	Z	Observed(°)	Ideal(°)
4	A	301	RTR	O8-S4-N7	-3.51	103.38	106.69
4	A	301	RTR	C12-N7-C13	-3.05	108.87	113.34
4	A	301	RTR	C27-C28-N30	2.22	121.38	118.01
4	A	301	RTR	C10-C5-S2	2.04	129.18	125.10

There are no chirality outliers.

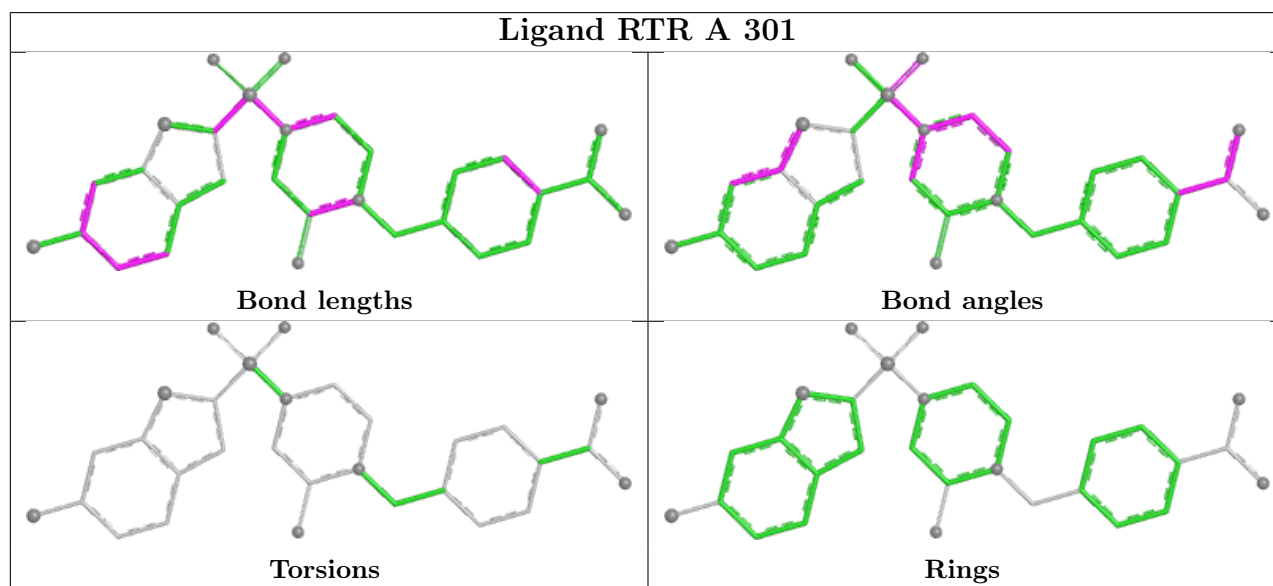
There are no torsion outliers.

There are no ring outliers.

1 monomer is involved in 2 short contacts:

Mol	Chain	Res	Type	Clashes	Symm-Clashes
4	A	301	RTR	2	0

The following is a two-dimensional graphical depiction of Mogul quality analysis of bond lengths, bond angles, torsion angles, and ring geometry for all instances of the Ligand of Interest. In addition, ligands with molecular weight > 250 and outliers as shown on the validation Tables will also be included. For torsion angles, if less than 5% of the Mogul distribution of torsion angles is within 10 degrees of the torsion angle in question, then that torsion angle is considered an outlier. Any bond that is central to one or more torsion angles identified as an outlier by Mogul will be highlighted in the graph. For rings, the root-mean-square deviation (RMSD) between the ring in question and similar rings identified by Mogul is calculated over all ring torsion angles. If the average RMSD is greater than 60 degrees and the minimal RMSD between the ring in question and any Mogul-identified rings is also greater than 60 degrees, then that ring is considered an outlier. The outliers are highlighted in purple. The color gray indicates Mogul did not find sufficient equivalents in the CSD to analyse the geometry.



5.7 Other polymers [i](#)

There are no such residues in this entry.

5.8 Polymer linkage issues [i](#)

There are no chain breaks in this entry.

6 Fit of model and data

6.1 Protein, DNA and RNA chains

EDS was not executed - this section is therefore empty.

6.2 Non-standard residues in protein, DNA, RNA chains

EDS was not executed - this section is therefore empty.

6.3 Carbohydrates

EDS was not executed - this section is therefore empty.

6.4 Ligands

EDS was not executed - this section is therefore empty.

6.5 Other polymers

EDS was not executed - this section is therefore empty.