



Full wwPDB X-ray Structure Validation Report ⓘ

Aug 22, 2019 – 06:58 PM EDT

PDB ID : 6NFV
Title : Structure of the KcsA-G77C mutant or the 2,4-ion bound configuration of a K⁺ channel selectivity filter.
Authors : Tilegenova, C.; Cortes, D.M.; Jahovic, N.; Hardy, E.; Parameswaran, H.; Guan, L.; Cuello, L.G.
Deposited on : 2018-12-20
Resolution : 2.13 Å(reported)

This is a Full wwPDB X-ray Structure Validation Report for a publicly released PDB entry.

We welcome your comments at validation@mail.wwpdb.org

A user guide is available at

<https://www.wwpdb.org/validation/2017/XrayValidationReportHelp>

with specific help available everywhere you see the ⓘ symbol.

The following versions of software and data (see [references ⓘ](#)) were used in the production of this report:

MolProbity : 4.02b-467
Mogul : 1.8.0 (224370), CSD as540be (2019)
Xtriage (Phenix) : 1.13
EDS : 2.4
buster-report : 1.1.7 (2018)
Percentile statistics : 20171227.v01 (using entries in the PDB archive December 27th 2017)
Refmac : 5.8.0158
CCP4 : 7.0 (Gargrove)
Ideal geometry (proteins) : Engh & Huber (2001)
Ideal geometry (DNA, RNA) : Parkinson et al. (1996)
Validation Pipeline (wwPDB-VP) : 2.4

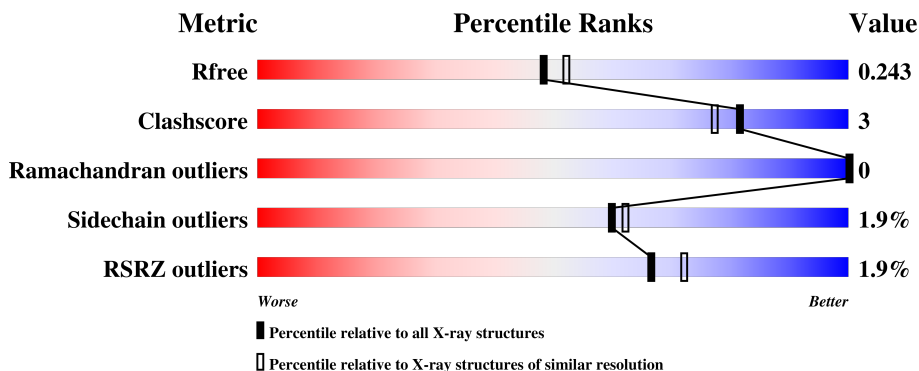
1 Overall quality at a glance

The following experimental techniques were used to determine the structure:

X-RAY DIFFRACTION

The reported resolution of this entry is 2.13 Å.

Percentile scores (ranging between 0-100) for global validation metrics of the entry are shown in the following graphic. The table shows the number of entries on which the scores are based.



Metric	Whole archive (#Entries)	Similar resolution (#Entries, resolution range(Å))
R_{free}	111664	2128 (2.16-2.12)
Clashscore	122126	2253 (2.16-2.12)
Ramachandran outliers	120053	2223 (2.16-2.12)
Sidechain outliers	120020	2222 (2.16-2.12)
RSRZ outliers	108989	2086 (2.16-2.12)

The table below summarises the geometric issues observed across the polymeric chains and their fit to the electron density. The red, orange, yellow and green segments on the lower bar indicate the fraction of residues that contain outliers for ≥ 3 , 2, 1 and 0 types of geometric quality criteria. A grey segment represents the fraction of residues that are not modelled. The numeric value for each fraction is indicated below the corresponding segment, with a dot representing fractions $\leq 5\%$. The upper red bar (where present) indicates the fraction of residues that have poor fit to the electron density. The numeric value is given above the bar.

Mol	Chain	Length	Quality of chain
1	A	219	 90% 9%
2	B	212	 90% 10%
3	C	103	 94% 6%

2 Entry composition [i](#)

There are 7 unique types of molecules in this entry. The entry contains 4165 atoms, of which 0 are hydrogens and 0 are deuteriums.

In the tables below, the ZeroOcc column contains the number of atoms modelled with zero occupancy, the AltConf column contains the number of residues with at least one atom in alternate conformation and the Trace column contains the number of residues modelled with at most 2 atoms.

- Molecule 1 is a protein called antibody fragment heavy chain.

Mol	Chain	Residues	Atoms					ZeroOcc	AltConf	Trace
			Total	C	N	O	S			
1	A	219	1606	1020	268	312	6	0	0	0

- Molecule 2 is a protein called antibody fragment light chain.

Mol	Chain	Residues	Atoms					ZeroOcc	AltConf	Trace
			Total	C	N	O	S			
2	B	212	1646	1022	282	337	5	0	0	0

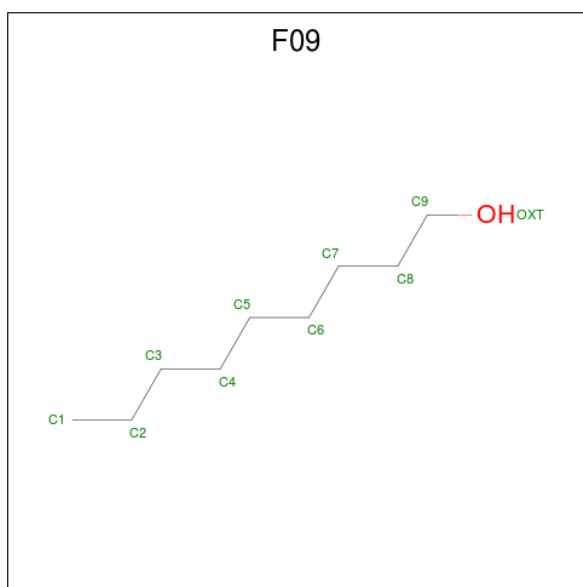
- Molecule 3 is a protein called pH-gated potassium channel KcsA.

Mol	Chain	Residues	Atoms					ZeroOcc	AltConf	Trace
			Total	C	N	O	S			
3	C	103	764	501	127	132	4	0	1	0

There are 2 discrepancies between the modelled and reference sequences:

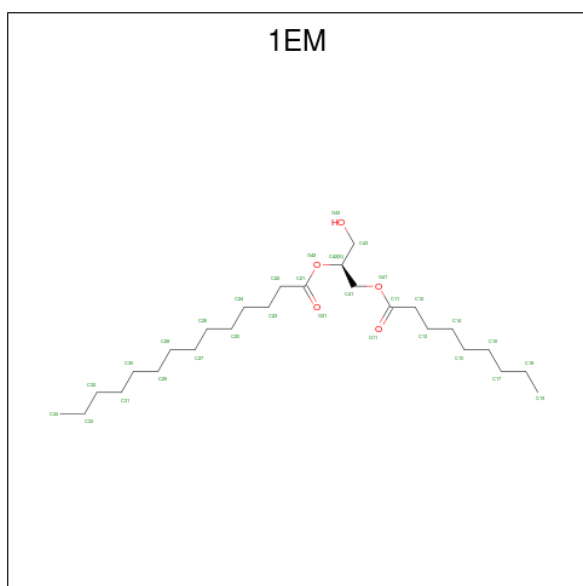
Chain	Residue	Modelled	Actual	Comment	Reference
C	77	CYS	GLY	engineered mutation	UNP P0A334
C	90	CYS	LEU	engineered mutation	UNP P0A334

- Molecule 4 is NONAN-1-OL (three-letter code: F09) (formula: C₉H₂₀O).



Mol	Chain	Residues	Atoms			ZeroOcc	AltConf
4	A	1	Total	C	O	0	0
			10	9	1		

- Molecule 5 is (1S)-2-HYDROXY-1-[(NONANOYLOXY)METHYL]ETHYL MYRISTATE (three-letter code: 1EM) (formula: $C_{26}H_{50}O_5$).



Mol	Chain	Residues	Atoms			ZeroOcc	AltConf
5	C	1	Total	C	O	0	0
			31	26	5		

- Molecule 6 is POTASSIUM ION (three-letter code: K) (formula: K).

Mol	Chain	Residues	Atoms	ZeroOcc	AltConf
6	C	4	Total K 4 4	0	0

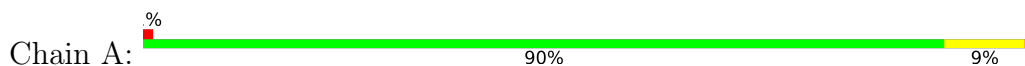
- Molecule 7 is water.

Mol	Chain	Residues	Atoms	ZeroOcc	AltConf
7	A	33	Total O 33 33	0	0
7	B	53	Total O 53 53	0	0
7	C	18	Total O 18 18	0	0

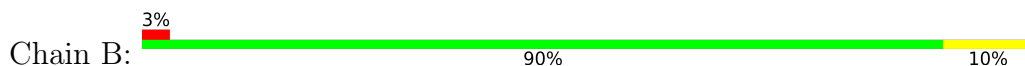
3 Residue-property plots [i](#)

These plots are drawn for all protein, RNA and DNA chains in the entry. The first graphic for a chain summarises the proportions of the various outlier classes displayed in the second graphic. The second graphic shows the sequence view annotated by issues in geometry and electron density. Residues are color-coded according to the number of geometric quality criteria for which they contain at least one outlier: green = 0, yellow = 1, orange = 2 and red = 3 or more. A red dot above a residue indicates a poor fit to the electron density ($RSRZ > 2$). Stretches of 2 or more consecutive residues without any outlier are shown as a green connector. Residues present in the sample, but not in the model, are shown in grey.

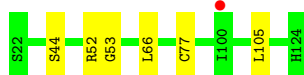
- Molecule 1: antibody fragment heavy chain



- Molecule 2: antibody fragment light chain



- Molecule 3: pH-gated potassium channel KcsA



4 Data and refinement statistics

Property	Value	Source
Space group	I 4	Depositor
Cell constants a, b, c, α , β , γ	156.16Å 156.16Å 76.12Å 90.00° 90.00° 90.00°	Depositor
Resolution (Å)	34.92 – 2.13 34.92 – 2.13	Depositor EDS
% Data completeness (in resolution range)	99.3 (34.92-2.13) 99.3 (34.92-2.13)	Depositor EDS
R_{merge}	(Not available)	Depositor
R_{sym}	(Not available)	Depositor
$\langle I/\sigma(I) \rangle$ ¹	2.19 (at 2.14Å)	Xtrriage
Refinement program	PHENIX 1.13_2998	Depositor
R, R_{free}	0.206 , 0.243 0.206 , 0.243	Depositor DCC
R_{free} test set	2000 reflections (3.92%)	wwPDB-VP
Wilson B-factor (Å ²)	50.5	Xtrriage
Anisotropy	0.278	Xtrriage
Bulk solvent k_{sol} (e/Å ³), B_{sol} (Å ²)	0.32 , 53.5	EDS
L-test for twinning ²	$\langle L \rangle = 0.50$, $\langle L^2 \rangle = 0.33$	Xtrriage
Estimated twinning fraction	0.020 for -k,-h,-l	Xtrriage
F_o, F_c correlation	0.95	EDS
Total number of atoms	4165	wwPDB-VP
Average B, all atoms (Å ²)	60.0	wwPDB-VP

Xtrriage's analysis on translational NCS is as follows: *The largest off-origin peak in the Patterson function is 3.38% of the height of the origin peak. No significant pseudotranslation is detected.*

¹Intensities estimated from amplitudes.

²Theoretical values of $\langle |L| \rangle$, $\langle L^2 \rangle$ for acentric reflections are 0.5, 0.333 respectively for untwinned datasets, and 0.375, 0.2 for perfectly twinned datasets.

5 Model quality [i](#)

5.1 Standard geometry [i](#)

Bond lengths and bond angles in the following residue types are not validated in this section: 1EM, K, F09

The Z score for a bond length (or angle) is the number of standard deviations the observed value is removed from the expected value. A bond length (or angle) with $|Z| > 5$ is considered an outlier worth inspection. RMSZ is the root-mean-square of all Z scores of the bond lengths (or angles).

Mol	Chain	Bond lengths		Bond angles	
		RMSZ	# $ Z > 5$	RMSZ	# $ Z > 5$
1	A	0.39	0/1650	0.56	0/2263
2	B	0.41	0/1683	0.57	1/2283 (0.0%)
3	C	0.72	2/786 (0.3%)	0.65	1/1081 (0.1%)
All	All	0.48	2/4119 (0.0%)	0.59	2/5627 (0.0%)

Chiral center outliers are detected by calculating the chiral volume of a chiral center and verifying if the center is modelled as a planar moiety or with the opposite hand. A planarity outlier is detected by checking planarity of atoms in a peptide group, atoms in a mainchain group or atoms of a sidechain that are expected to be planar.

Mol	Chain	#Chirality outliers	#Planarity outliers
3	C	0	1

All (2) bond length outliers are listed below:

Mol	Chain	Res	Type	Atoms	Z	Observed(Å)	Ideal(Å)
3	C	77[A]	CYS	CB-SG	-9.72	1.65	1.82
3	C	77[B]	CYS	CB-SG	-9.72	1.65	1.82

All (2) bond angle outliers are listed below:

Mol	Chain	Res	Type	Atoms	Z	Observed(°)	Ideal(°)
3	C	52	ARG	C-N-CA	-6.96	107.69	122.30
2	B	11	LEU	CA-CB-CG	5.75	128.52	115.30

There are no chirality outliers.

All (1) planarity outliers are listed below:

Mol	Chain	Res	Type	Group
3	C	53	GLY	Peptide

5.2 Too-close contacts [i](#)

In the following table, the Non-H and H(model) columns list the number of non-hydrogen atoms and hydrogen atoms in the chain respectively. The H(added) column lists the number of hydrogen atoms added and optimized by MolProbity. The Clashes column lists the number of clashes within the asymmetric unit, whereas Symm-Clashes lists symmetry related clashes.

Mol	Chain	Non-H	H(model)	H(added)	Clashes	Symm-Clashes
1	A	1606	0	1536	11	0
2	B	1646	0	1572	11	0
3	C	764	0	766	1	0
4	A	10	0	20	0	0
5	C	31	0	50	0	0
6	C	4	0	0	0	0
7	A	33	0	0	0	0
7	B	53	0	0	1	0
7	C	18	0	0	0	0
All	All	4165	0	3944	22	0

The all-atom clashscore is defined as the number of clashes found per 1000 atoms (including hydrogen atoms). The all-atom clashscore for this structure is 3.

All (22) close contacts within the same asymmetric unit are listed below, sorted by their clash magnitude.

Atom-1	Atom-2	Interatomic distance (Å)	Clash overlap (Å)
2:B:182:THR:HG23	2:B:185:GLU:H	1.56	0.69
1:A:1:GLN:N	1:A:1:GLN:OE1	2.24	0.68
2:B:18:ARG:NH1	2:B:76:ASN:OD1	2.27	0.67
1:A:124:PRO:HB3	1:A:150:TYR:HB3	1.82	0.61
1:A:83:LEU:HB3	1:A:86:LEU:HD21	1.85	0.59
2:B:183:LYS:NZ	2:B:187:GLU:OE1	2.37	0.57
1:A:185:SER:HB2	2:B:135:PHE:CE2	2.42	0.54
2:B:61:ARG:NH2	2:B:81:GLU:OE1	2.33	0.53
2:B:120:PRO:HD3	2:B:132:VAL:HG22	1.91	0.52
2:B:37:GLN:HB2	2:B:47:LEU:HD11	1.91	0.51
1:A:175:LEU:HB2	1:A:180:TYR:CE2	2.46	0.51
1:A:38:LYS:HB2	1:A:48:ILE:HD11	1.92	0.51
2:B:211:ARG:HB3	2:B:211:ARG:HE	1.44	0.45
2:B:115:VAL:HA	2:B:135:PHE:O	2.16	0.45

Continued on next page...

Continued from previous page...

Atom-1	Atom-2	Interatomic distance (Å)	Clash overlap (Å)
1:A:57:ARG:HG3	1:A:58:ALA:N	2.32	0.44
2:B:175:MET:HG2	2:B:176:SER:N	2.32	0.44
1:A:12:VAL:O	1:A:116:VAL:HA	2.19	0.43
3:C:44:SER:OG	3:C:66:LEU:HA	2.20	0.41
1:A:17:SER:HB2	1:A:84:SER:HA	2.01	0.41
1:A:193:TRP:CD1	1:A:194:PRO:HA	2.55	0.41
2:B:27:GLN:NE2	7:B:302:HOH:O	2.38	0.41
1:A:12:VAL:HG11	1:A:86:LEU:HD12	2.03	0.40

There are no symmetry-related clashes.

5.3 Torsion angles [i](#)

5.3.1 Protein backbone [i](#)

In the following table, the Percentiles column shows the percent Ramachandran outliers of the chain as a percentile score with respect to all X-ray entries followed by that with respect to entries of similar resolution.

The Analysed column shows the number of residues for which the backbone conformation was analysed, and the total number of residues.

Mol	Chain	Analysed	Favoured	Allowed	Outliers	Percentiles	
1	A	217/219 (99%)	213 (98%)	4 (2%)	0	100	100
2	B	210/212 (99%)	203 (97%)	7 (3%)	0	100	100
3	C	102/103 (99%)	100 (98%)	2 (2%)	0	100	100
All	All	529/534 (99%)	516 (98%)	13 (2%)	0	100	100

There are no Ramachandran outliers to report.

5.3.2 Protein sidechains [i](#)

In the following table, the Percentiles column shows the percent sidechain outliers of the chain as a percentile score with respect to all X-ray entries followed by that with respect to entries of similar resolution.

The Analysed column shows the number of residues for which the sidechain conformation was analysed, and the total number of residues.

Mol	Chain	Analysed	Rotameric	Outliers	Percentiles	
1	A	171/185 (92%)	166 (97%)	5 (3%)	45	43
2	B	189/190 (100%)	187 (99%)	2 (1%)	76	78
3	C	73/76 (96%)	72 (99%)	1 (1%)	69	73
All	All	433/451 (96%)	425 (98%)	8 (2%)	60	64

All (8) residues with a non-rotameric sidechain are listed below:

Mol	Chain	Res	Type
1	A	6	GLN
1	A	17	SER
1	A	57	ARG
1	A	163	SER
1	A	201	ASN
2	B	70	ASP
2	B	147	LYS
3	C	105	LEU

Some sidechains can be flipped to improve hydrogen bonding and reduce clashes. There are no such sidechains identified.

5.3.3 RNA [i](#)

There are no RNA molecules in this entry.

5.4 Non-standard residues in protein, DNA, RNA chains [i](#)

There are no non-standard protein/DNA/RNA residues in this entry.

5.5 Carbohydrates [i](#)

There are no carbohydrates in this entry.

5.6 Ligand geometry [i](#)

Of 6 ligands modelled in this entry, 4 are monoatomic - leaving 2 for Mogul analysis.

In the following table, the Counts columns list the number of bonds (or angles) for which Mogul statistics could be retrieved, the number of bonds (or angles) that are observed in the model and the number of bonds (or angles) that are defined in the Chemical Component Dictionary. The Link column lists molecule types, if any, to which the group is linked. The Z score for a bond

length (or angle) is the number of standard deviations the observed value is removed from the expected value. A bond length (or angle) with $|Z| > 2$ is considered an outlier worth inspection. RMSZ is the root-mean-square of all Z scores of the bond lengths (or angles).

Mol	Type	Chain	Res	Link	Bond lengths			Bond angles		
					Counts	RMSZ	# Z > 2	Counts	RMSZ	# Z > 2
4	F09	A	301	-	9,9,9	0.38	0	8,8,8	0.56	0
5	1EM	C	201	-	30,30,30	1.30	3 (10%)	32,32,32	1.28	3 (9%)

In the following table, the Chirals column lists the number of chiral outliers, the number of chiral centers analysed, the number of these observed in the model and the number defined in the Chemical Component Dictionary. Similar counts are reported in the Torsion and Rings columns. '2' means no outliers of that kind were identified.

Mol	Type	Chain	Res	Link	Chirals	Torsions	Rings
4	F09	A	301	-	-	4/7/7/7	-
5	1EM	C	201	-	-	12/32/32/32	-

All (3) bond length outliers are listed below:

Mol	Chain	Res	Type	Atoms	Z	Observed(Å)	Ideal(Å)
5	C	201	1EM	O41-C11	3.50	1.43	1.33
5	C	201	1EM	O42-C21	2.98	1.42	1.34
5	C	201	1EM	C12-C11	2.65	1.58	1.50

All (3) bond angle outliers are listed below:

Mol	Chain	Res	Type	Atoms	Z	Observed(°)	Ideal(°)
5	C	201	1EM	O41-C11-C12	3.80	124.13	111.93
5	C	201	1EM	O42-C21-C22	2.94	117.94	111.51
5	C	201	1EM	O41-C11-O11	-2.90	116.16	123.56

There are no chirality outliers.

All (16) torsion outliers are listed below:

Mol	Chain	Res	Type	Atoms
5	C	201	1EM	C41-C42-C43-O43
5	C	201	1EM	O42-C42-C43-O43
5	C	201	1EM	C29-C30-C31-C32
5	C	201	1EM	O41-C41-C42-O42
5	C	201	1EM	C21-C22-C23-C24
5	C	201	1EM	C11-C12-C13-C14
5	C	201	1EM	C15-C16-C17-C18

Continued on next page...

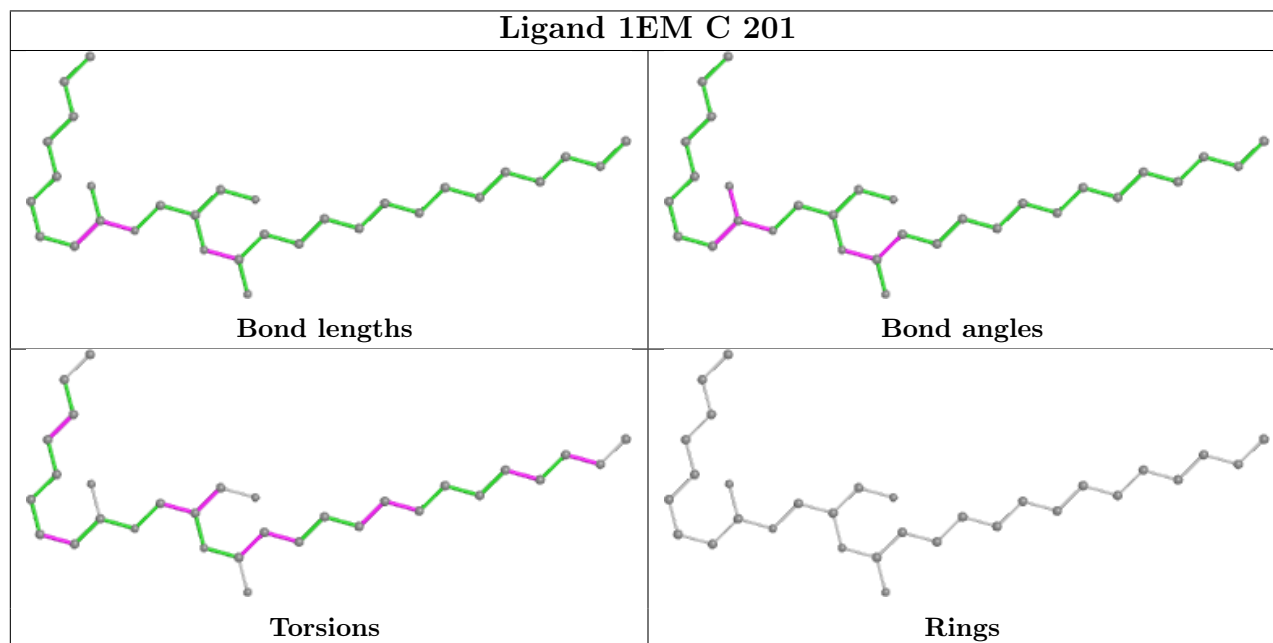
Continued from previous page...

Mol	Chain	Res	Type	Atoms
5	C	201	1EM	C25-C26-C27-C28
4	A	301	F09	C4-C5-C6-C7
4	A	301	F09	C2-C3-C4-C5
5	C	201	1EM	O41-C41-C42-C43
4	A	301	F09	C5-C6-C7-C8
4	A	301	F09	C1-C2-C3-C4
5	C	201	1EM	C31-C32-C33-C34
5	C	201	1EM	C24-C25-C26-C27
5	C	201	1EM	O42-C21-C22-C23

There are no ring outliers.

No monomer is involved in short contacts.

The following is a two-dimensional graphical depiction of Mogul quality analysis of bond lengths, bond angles, torsion angles, and ring geometry for all instances of the Ligand of Interest. In addition, ligands with molecular weight > 250 and outliers as shown on the validation Tables will also be included. For torsion angles, if less than 5% of the Mogul distribution of torsion angles is within 10 degrees of the torsion angle in question, then that torsion angle is considered an outlier. Any bond that is central to one or more torsion angles identified as an outlier by Mogul will be highlighted in purple. For rings, the root-mean-square deviation (RMSD) between the ring in question and similar rings identified by Mogul is calculated over all ring torsion angles. If the average RMSD is greater than 60 degrees and the minimal RMSD between the ring in question and any Mogul-identified rings is also greater than 60 degrees, then that ring is considered an outlier. The outliers are highlighted in purple. The color gray indicates Mogul did not find sufficient equivalents in the CSD to analyse the geometry.



5.7 Other polymers [i](#)

There are no such residues in this entry.

5.8 Polymer linkage issues [i](#)

There are no chain breaks in this entry.

6 Fit of model and data [i](#)

6.1 Protein, DNA and RNA chains [i](#)

In the following table, the column labelled ‘#RSRZ > 2’ contains the number (and percentage) of RSRZ outliers, followed by percent RSRZ outliers for the chain as percentile scores relative to all X-ray entries and entries of similar resolution. The OWAB column contains the minimum, median, 95th percentile and maximum values of the occupancy-weighted average B-factor per residue. The column labelled ‘Q < 0.9’ lists the number of (and percentage) of residues with an average occupancy less than 0.9.

Mol	Chain	Analysed	<RSRZ>	#RSRZ>2	OWAB(Å ²)	Q<0.9
1	A	219/219 (100%)	-0.09	2 (0%) 84 87	42, 63, 80, 105	0
2	B	212/212 (100%)	0.07	7 (3%) 46 54	39, 61, 88, 100	0
3	C	103/103 (100%)	0.34	1 (0%) 82 86	36, 46, 72, 83	0
All	All	534/534 (100%)	0.06	10 (1%) 66 72	36, 60, 83, 105	0

All (10) RSRZ outliers are listed below:

Mol	Chain	Res	Type	RSRZ
1	A	219	ASP	2.8
2	B	212	ASN	2.4
2	B	125	LEU	2.4
2	B	109	ALA	2.4
2	B	188	ARG	2.3
2	B	202	THR	2.3
2	B	129	GLY	2.3
1	A	75	SER	2.2
3	C	100	ILE	2.2
2	B	57	GLY	2.1

6.2 Non-standard residues in protein, DNA, RNA chains [i](#)

There are no non-standard protein/DNA/RNA residues in this entry.

6.3 Carbohydrates [i](#)

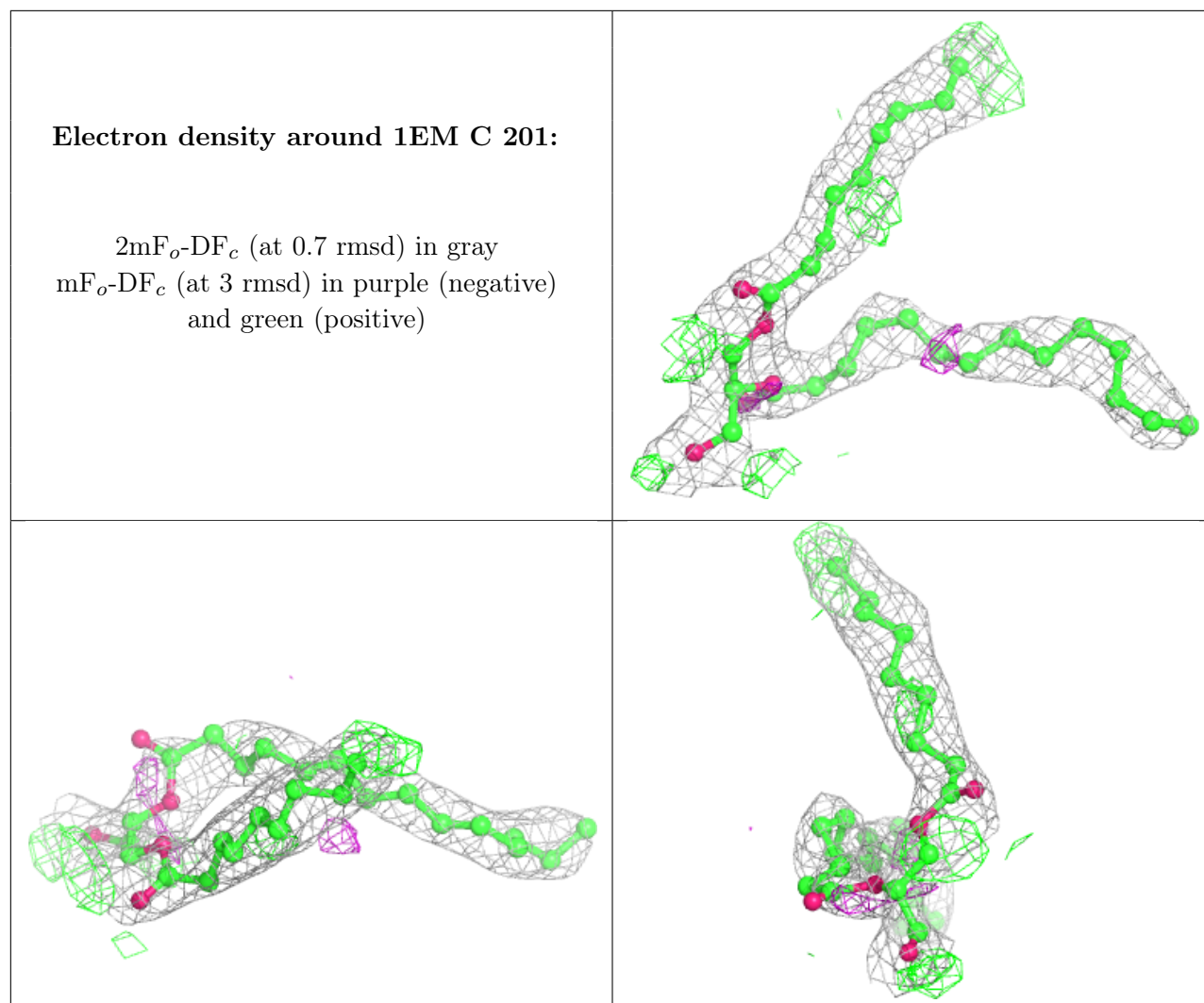
There are no carbohydrates in this entry.

6.4 Ligands

In the following table, the Atoms column lists the number of modelled atoms in the group and the number defined in the chemical component dictionary. The B-factors column lists the minimum, median, 95th percentile and maximum values of B factors of atoms in the group. The column labelled 'Q< 0.9' lists the number of atoms with occupancy less than 0.9.

Mol	Type	Chain	Res	Atoms	RSCC	RSR	B-factors(Å ²)	Q<0.9
5	1EM	C	201	31/31	0.69	0.24	53,69,93,97	0
4	F09	A	301	10/10	0.73	0.24	63,69,80,86	0
6	K	C	203	1/1	0.86	0.09	50,50,50,50	1
6	K	C	205	1/1	0.89	0.07	106,106,106,106	1
6	K	C	202	1/1	0.96	0.12	43,43,43,43	1
6	K	C	204	1/1	1.00	0.25	44,44,44,44	1

The following is a graphical depiction of the model fit to experimental electron density of all instances of the Ligand of Interest. In addition, ligands with molecular weight > 250 and outliers as shown on the geometry validation Tables will also be included. Each fit is shown from different orientation to approximate a three-dimensional view.



6.5 Other polymers [\(i\)](#)

There are no such residues in this entry.