



# Full wwPDB X-ray Structure Validation Report ⓘ

Aug 29, 2023 – 04:28 AM EDT

PDB ID : 3NHO  
Title : Complex of 6-hydroxy-L-nicotine oxidase with product bound at active site  
Authors : Kachalova, G.S.; Bartunik, H.D.  
Deposited on : 2010-06-14  
Resolution : 2.85 Å(reported)

This is a Full wwPDB X-ray Structure Validation Report for a publicly released PDB entry.

We welcome your comments at [validation@mail.wwpdb.org](mailto:validation@mail.wwpdb.org)

A user guide is available at

<https://www.wwpdb.org/validation/2017/XrayValidationReportHelp>

with specific help available everywhere you see the ⓘ symbol.

The types of validation reports are described at

<http://www.wwpdb.org/validation/2017/FAQs#types>.

---

The following versions of software and data (see [references ⓘ](#)) were used in the production of this report:

MolProbity : 4.02b-467  
Mogul : 1.8.5 (274361), CSD as541be (2020)  
Xtriage (Phenix) : 1.13  
EDS : 2.35  
buster-report : 1.1.7 (2018)  
Percentile statistics : 20191225.v01 (using entries in the PDB archive December 25th 2019)  
Refmac : 5.8.0158  
CCP4 : 7.0.044 (Gargrove)  
Ideal geometry (proteins) : Engh & Huber (2001)  
Ideal geometry (DNA, RNA) : Parkinson et al. (1996)  
Validation Pipeline (wwPDB-VP) : 2.35

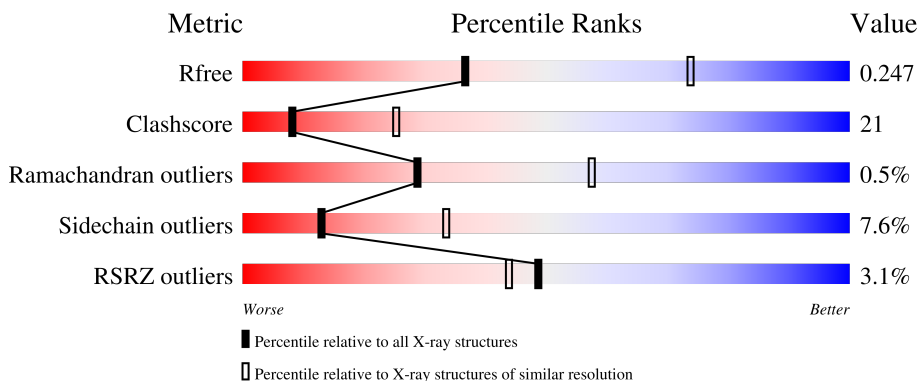
# 1 Overall quality at a glance

The following experimental techniques were used to determine the structure:

*X-RAY DIFFRACTION*

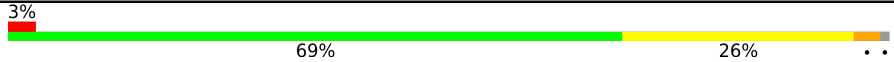
The reported resolution of this entry is 2.85 Å.

Percentile scores (ranging between 0-100) for global validation metrics of the entry are shown in the following graphic. The table shows the number of entries on which the scores are based.



Metric	Whole archive (#Entries)	Similar resolution (#Entries, resolution range(Å))
$R_{free}$	130704	3168 (2.90-2.82)
Clashscore	141614	3438 (2.90-2.82)
Ramachandran outliers	138981	3348 (2.90-2.82)
Sidechain outliers	138945	3351 (2.90-2.82)
RSRZ outliers	127900	3103 (2.90-2.82)

The table below summarises the geometric issues observed across the polymeric chains and their fit to the electron density. The red, orange, yellow and green segments of the lower bar indicate the fraction of residues that contain outliers for  $\geq 3$ , 2, 1 and 0 types of geometric quality criteria respectively. A grey segment represents the fraction of residues that are not modelled. The numeric value for each fraction is indicated below the corresponding segment, with a dot representing fractions  $\leq 5\%$ . The upper red bar (where present) indicates the fraction of residues that have poor fit to the electron density. The numeric value is given above the bar.

Mol	Chain	Length	Quality of chain
1	X	431	

## 2 Entry composition [i](#)

There are 5 unique types of molecules in this entry. The entry contains 3899 atoms, of which 0 are hydrogens and 0 are deuteriums.

In the tables below, the ZeroOcc column contains the number of atoms modelled with zero occupancy, the AltConf column contains the number of residues with at least one atom in alternate conformation and the Trace column contains the number of residues modelled with at most 2 atoms.

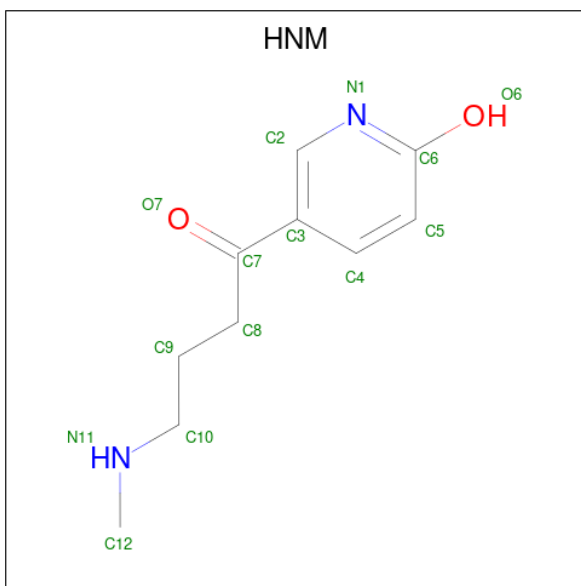
- Molecule 1 is a protein called 6-hydroxy-L-nicotine oxidase.

Mol	Chain	Residues	Atoms					ZeroOcc	AltConf	Trace
			Total	C	N	O	S			
1	X	425	3327	2111	576	631	9	0	8	0

There are 6 discrepancies between the modelled and reference sequences:

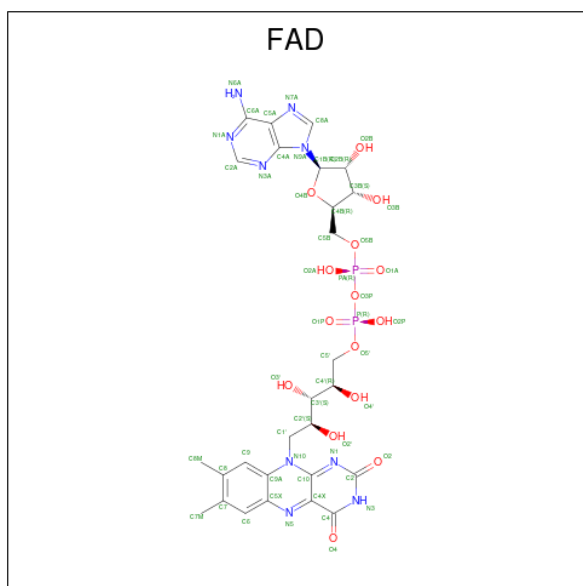
Chain	Residue	Modelled	Actual	Comment	Reference
X	426	HIS	-	expression tag	UNP Q93NH4
X	427	HIS	-	expression tag	UNP Q93NH4
X	428	HIS	-	expression tag	UNP Q93NH4
X	429	HIS	-	expression tag	UNP Q93NH4
X	430	HIS	-	expression tag	UNP Q93NH4
X	431	HIS	-	expression tag	UNP Q93NH4

- Molecule 2 is 1-(6-hydroxypyridin-3-yl)-4-(methylamino)butan-1-one (three-letter code: HNM) (formula: C<sub>10</sub>H<sub>14</sub>N<sub>2</sub>O<sub>2</sub>).



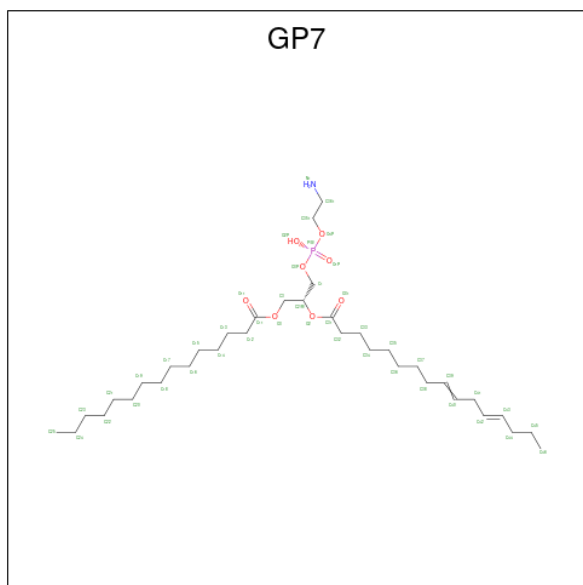
Mol	Chain	Residues	Atoms				ZeroOcc	AltConf
			Total	C	N	O		
2	X	1	14	10	2	2	0	0

- Molecule 3 is FLAVIN-ADENINE DINUCLEOTIDE (three-letter code: FAD) (formula:  $C_{27}H_{33}N_9O_{15}P_2$ ).



Mol	Chain	Residues	Atoms					ZeroOcc	AltConf
			Total	C	N	O	P		
3	X	1	53	27	9	15	2	0	0

- Molecule 4 is (1R)-2-{[(S)-(2-aminoethoxy)(hydroxy)phosphoryl]oxy}-1-[(pentadecanoyloxy)methyl]ethyl (12E)-hexadeca-9,12-dienoate (three-letter code: GP7) (formula:  $C_{36}H_{68}NO_8P$ ).



Mol	Chain	Residues	Atoms				ZeroOcc	AltConf
			Total	C	O	P		
4	X	1	43	34	8	1	0	0

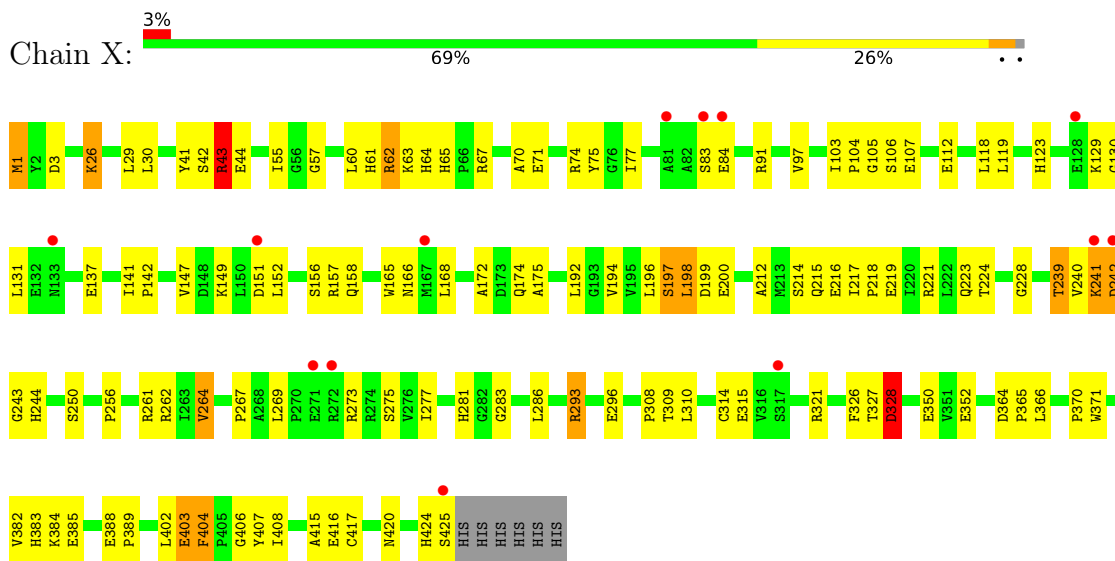
- Molecule 5 is water.

Mol	Chain	Residues	Atoms		ZeroOcc	AltConf
			Total	O		
5	X	458	462	462	0	75

### 3 Residue-property plots [i](#)

These plots are drawn for all protein, RNA, DNA and oligosaccharide chains in the entry. The first graphic for a chain summarises the proportions of the various outlier classes displayed in the second graphic. The second graphic shows the sequence view annotated by issues in geometry and electron density. Residues are color-coded according to the number of geometric quality criteria for which they contain at least one outlier: green = 0, yellow = 1, orange = 2 and red = 3 or more. A red dot above a residue indicates a poor fit to the electron density ( $RSRZ > 2$ ). Stretches of 2 or more consecutive residues without any outlier are shown as a green connector. Residues present in the sample, but not in the model, are shown in grey.

- Molecule 1: 6-hydroxy-L-nicotine oxidase



## 4 Data and refinement statistics

Property	Value	Source
Space group	P 4 3 2	Depositor
Cell constants a, b, c, $\alpha$ , $\beta$ , $\gamma$	164.72Å 164.72Å 164.72Å 90.00° 90.00° 90.00°	Depositor
Resolution (Å)	14.40 – 2.85 31.70 – 2.70	Depositor EDS
% Data completeness (in resolution range)	99.9 (14.40-2.85) 99.8 (31.70-2.70)	Depositor EDS
$R_{merge}$	0.14	Depositor
$R_{sym}$	(Not available)	Depositor
$\langle I/\sigma(I) \rangle$ <sup>1</sup>	1.97 (at 2.68Å)	Xtrriage
Refinement program	REFMAC 5.2.0019	Depositor
R, $R_{free}$	0.165 , 0.243 0.181 , 0.247	Depositor DCC
$R_{free}$ test set	1106 reflections (5.13%)	wwPDB-VP
Wilson B-factor (Å <sup>2</sup> )	53.8	Xtrriage
Anisotropy	0.000	Xtrriage
Bulk solvent $k_{sol}$ (e/Å <sup>3</sup> ), $B_{sol}$ (Å <sup>2</sup> )	0.40 , 75.8	EDS
L-test for twinning <sup>2</sup>	$\langle  L  \rangle = 0.52$ , $\langle L^2 \rangle = 0.36$	Xtrriage
Estimated twinning fraction	No twinning to report.	Xtrriage
$F_o, F_c$ correlation	0.95	EDS
Total number of atoms	3899	wwPDB-VP
Average B, all atoms (Å <sup>2</sup> )	45.0	wwPDB-VP

Xtrriage's analysis on translational NCS is as follows: *The largest off-origin peak in the Patterson function is 3.31% of the height of the origin peak. No significant pseudotranslation is detected.*

<sup>1</sup>Intensities estimated from amplitudes.

<sup>2</sup>Theoretical values of  $\langle |L| \rangle$ ,  $\langle L^2 \rangle$  for acentric reflections are 0.5, 0.333 respectively for untwinned datasets, and 0.375, 0.2 for perfectly twinned datasets.

## 5 Model quality [i](#)

### 5.1 Standard geometry [i](#)

Bond lengths and bond angles in the following residue types are not validated in this section: GP7, FAD, HNM

The Z score for a bond length (or angle) is the number of standard deviations the observed value is removed from the expected value. A bond length (or angle) with  $|Z| > 5$  is considered an outlier worth inspection. RMSZ is the root-mean-square of all Z scores of the bond lengths (or angles).

Mol	Chain	Bond lengths		Bond angles	
		RMSZ	# Z  >5	RMSZ	# Z  >5
1	X	0.88	2/3411 (0.1%)	0.83	3/4641 (0.1%)

Chiral center outliers are detected by calculating the chiral volume of a chiral center and verifying if the center is modelled as a planar moiety or with the opposite hand. A planarity outlier is detected by checking planarity of atoms in a peptide group, atoms in a mainchain group or atoms of a sidechain that are expected to be planar.

Mol	Chain	#Chirality outliers	#Planarity outliers
1	X	0	1

All (2) bond length outliers are listed below:

Mol	Chain	Res	Type	Atoms	Z	Observed(Å)	Ideal(Å)
1	X	137	GLU	CG-CD	5.59	1.60	1.51
1	X	350	GLU	CG-CD	5.13	1.59	1.51

All (3) bond angle outliers are listed below:

Mol	Chain	Res	Type	Atoms	Z	Observed(°)	Ideal(°)
1	X	43	ARG	NE-CZ-NH2	-5.93	117.33	120.30
1	X	151	ASP	CB-CG-OD2	5.21	122.99	118.30
1	X	328	ASP	N-CA-CB	-5.15	101.33	110.60

There are no chirality outliers.

All (1) planarity outliers are listed below:

Mol	Chain	Res	Type	Group
1	X	242[B]	ASP	Peptide



## 5.2 Too-close contacts [i](#)

In the following table, the Non-H and H(model) columns list the number of non-hydrogen atoms and hydrogen atoms in the chain respectively. The H(added) column lists the number of hydrogen atoms added and optimized by MolProbity. The Clashes column lists the number of clashes within the asymmetric unit, whereas Symm-Clashes lists symmetry-related clashes.

Mol	Chain	Non-H	H(model)	H(added)	Clashes	Symm-Clashes
1	X	3327	0	3255	139	0
2	X	14	0	13	2	0
3	X	53	0	31	6	0
4	X	43	0	61	5	0
5	X	462	0	0	42	0
All	All	3899	0	3360	144	0

The all-atom clashscore is defined as the number of clashes found per 1000 atoms (including hydrogen atoms). The all-atom clashscore for this structure is 21.

All (144) close contacts within the same asymmetric unit are listed below, sorted by their clash magnitude.

Atom-1	Atom-2	Interatomic distance (Å)	Clash overlap (Å)
1:X:198:LEU:HD11	5:X:878[B]:HOH:O	1.22	1.34
4:X:435:GP7:H3	5:X:733:HOH:O	1.33	1.26
1:X:242[B]:ASP:HB2	1:X:244[B]:HIS:CE1	1.73	1.22
1:X:242[B]:ASP:CB	1:X:244[B]:HIS:CE1	2.30	1.14
1:X:198:LEU:CD1	5:X:878[B]:HOH:O	1.85	1.10
1:X:67:ARG:O	5:X:456[B]:HOH:O	1.69	1.08
1:X:1:MET:SD	1:X:1:MET:N	2.30	1.05
1:X:314:CYS:SG	5:X:1028[B]:HOH:O	2.16	1.02
1:X:242[B]:ASP:C	1:X:244[B]:HIS:CE1	2.35	0.99
1:X:420:ASN:HB3	5:X:1013:HOH:O	1.70	0.92
1:X:242[B]:ASP:CA	1:X:244[B]:HIS:HE1	1.84	0.90
1:X:242[B]:ASP:CA	1:X:244[B]:HIS:CE1	2.54	0.90
1:X:242[B]:ASP:HB2	1:X:244[B]:HIS:NE2	1.86	0.90
1:X:242[B]:ASP:CB	1:X:244[B]:HIS:HE1	1.74	0.90
4:X:435:GP7:H32A	4:X:435:GP7:O3	1.74	0.87
1:X:424:HIS:O	1:X:425:SER:HB3	1.72	0.86
1:X:242[B]:ASP:O	1:X:244[B]:HIS:CE1	2.30	0.84
1:X:281:HIS:HD2	1:X:283:GLY:H	1.28	0.82
1:X:3:ASP:OD2	1:X:26:LYS:N	2.12	0.80
1:X:198:LEU:HB3	5:X:454[B]:HOH:O	1.81	0.80
1:X:61:HIS:CE1	1:X:63:LYS:HE3	2.18	0.79
1:X:75:TYR:HB2	1:X:77:ILE:HD12	1.65	0.78

*Continued on next page...*

*Continued from previous page...*

Atom-1	Atom-2	Interatomic distance (Å)	Clash overlap (Å)
1:X:61:HIS:HE1	1:X:63:LYS:HE3	1.48	0.77
2:X:433:HNM:H12A	5:X:538:HOH:O	1.86	0.76
1:X:244[B]:HIS:ND1	1:X:244[B]:HIS:N	2.30	0.75
1:X:61:HIS:HD2	1:X:199:ASP:OD2	1.71	0.73
1:X:112:GLU:OE1	5:X:560[B]:HOH:O	2.06	0.73
1:X:273:ARG:O	1:X:277:ILE:HG13	1.90	0.70
1:X:239:THR:CG2	5:X:790[B]:HOH:O	2.39	0.70
1:X:242[B]:ASP:C	1:X:244[B]:HIS:ND1	2.45	0.69
1:X:315:GLU:HG3	1:X:321:ARG:NH1	2.07	0.69
4:X:435:GP7:H32A	4:X:435:GP7:C3	2.23	0.68
1:X:131:LEU:H	1:X:383:HIS:HD2	1.42	0.67
1:X:83:SER:HB3	5:X:656:HOH:O	1.95	0.67
1:X:147:VAL:CG1	1:X:147:VAL:O	2.44	0.66
1:X:242[B]:ASP:O	1:X:244[B]:HIS:ND1	2.30	0.65
1:X:383:HIS:HE1	5:X:463:HOH:O	1.79	0.65
1:X:75:TYR:HB2	1:X:77:ILE:CD1	2.26	0.64
1:X:242[B]:ASP:OD1	1:X:244[B]:HIS:CE1	2.50	0.64
1:X:240:VAL:CG1	1:X:241[B]:LYS:N	2.62	0.63
1:X:309:THR:O	5:X:473[B]:HOH:O	2.15	0.63
1:X:382:VAL:CG2	1:X:385[A]:GLU:HB3	2.28	0.63
1:X:70:ALA:HB3	5:X:456[B]:HOH:O	1.99	0.63
1:X:240:VAL:O	1:X:243[B]:GLY:N	2.27	0.63
1:X:219:GLU:HG3	5:X:1088:HOH:O	1.97	0.62
1:X:275:SER:HB2	5:X:589:HOH:O	1.98	0.62
1:X:262:ARG:HG3	5:X:536:HOH:O	1.99	0.62
1:X:157:ARG:HD3	5:X:670:HOH:O	1.99	0.61
1:X:315:GLU:HG3	1:X:321:ARG:HH12	1.65	0.61
1:X:61:HIS:CE1	1:X:63:LYS:HG2	2.35	0.61
1:X:61:HIS:CD2	1:X:199:ASP:OD2	2.52	0.61
1:X:84:GLU:HA	5:X:494:HOH:O	2.00	0.61
1:X:57:GLY:HA2	3:X:434:FAD:N5	2.15	0.61
1:X:147:VAL:O	1:X:147:VAL:HG12	2.00	0.60
1:X:382:VAL:CG2	1:X:385[B]:GLU:HB2	2.32	0.60
1:X:165:TRP:CE3	1:X:308:PRO:HG3	2.36	0.60
1:X:174:GLN:HG3	5:X:1089:HOH:O	2.02	0.60
1:X:240:VAL:CG1	1:X:241[A]:LYS:N	2.66	0.59
1:X:244[A]:HIS:H	1:X:244[A]:HIS:CD2	2.20	0.58
1:X:30:LEU:HD22	1:X:224:THR:HG21	1.85	0.58
1:X:293:ARG:NH1	1:X:352:GLU:OE2	2.37	0.58
1:X:61:HIS:HB2	1:X:197:SER:O	2.04	0.58
1:X:74:ARG:HD2	5:X:613:HOH:O	2.03	0.57

*Continued on next page...*

*Continued from previous page...*

Atom-1	Atom-2	Interatomic distance (Å)	Clash overlap (Å)
1:X:194:VAL:HG11	4:X:435:GP7:H46A	1.86	0.57
1:X:103:ILE:HD12	1:X:156:SER:HB3	1.87	0.57
1:X:157:ARG:NH2	5:X:643:HOH:O	2.38	0.56
1:X:293:ARG:HG2	1:X:293:ARG:HH11	1.70	0.56
1:X:83:SER:HA	5:X:1087:HOH:O	2.05	0.55
1:X:384:LYS:HG3	1:X:402:LEU:HD11	1.88	0.55
1:X:242[B]:ASP:CG	1:X:244[B]:HIS:CE1	2.78	0.55
1:X:242[B]:ASP:N	1:X:244[B]:HIS:HE1	2.04	0.55
1:X:105:GLY:C	1:X:107:GLU:H	2.09	0.55
1:X:309:THR:C	5:X:473[B]:HOH:O	2.44	0.54
1:X:275:SER:CB	5:X:589:HOH:O	2.55	0.54
1:X:158:GLN:NE2	5:X:442:HOH:O	2.33	0.54
1:X:242[B]:ASP:CG	1:X:244[B]:HIS:HE1	2.11	0.54
1:X:43:ARG:HG3	1:X:43:ARG:HH11	1.72	0.53
1:X:281:HIS:CD2	1:X:283:GLY:H	2.17	0.53
1:X:131:LEU:H	1:X:383:HIS:CD2	2.26	0.53
1:X:281:HIS:HD2	1:X:283:GLY:N	2.04	0.53
1:X:57:GLY:HA2	3:X:434:FAD:C4X	2.39	0.53
1:X:214:SER:C	1:X:216:GLU:H	2.13	0.53
1:X:239:THR:HG23	5:X:790[B]:HOH:O	2.08	0.53
1:X:286:LEU:HB3	1:X:327:THR:O	2.09	0.52
1:X:264:VAL:HA	5:X:592:HOH:O	2.09	0.52
1:X:166:ASN:ND2	1:X:309:THR:OG1	2.36	0.52
1:X:218:PRO:HD2	5:X:626:HOH:O	2.10	0.52
1:X:241[B]:LYS:HB3	5:X:635:HOH:O	2.09	0.52
1:X:308:PRO:HD2	1:X:326:PHE:O	2.10	0.51
1:X:174:GLN:CG	5:X:1089:HOH:O	2.58	0.50
1:X:261:ARG:HG3	1:X:262:ARG:NH1	2.27	0.49
1:X:415:ALA:O	1:X:416:GLU:C	2.50	0.48
1:X:71:GLU:N	5:X:456[B]:HOH:O	2.34	0.48
1:X:364:ASP:OD1	1:X:365:PRO:HD2	2.13	0.48
1:X:267:PRO:CD	5:X:925[A]:HOH:O	2.62	0.48
1:X:407:TYR:O	1:X:408:ILE:C	2.51	0.48
1:X:256:PRO:HD3	3:X:434:FAD:H51A	1.96	0.48
1:X:62:ARG:NH2	5:X:625:HOH:O	2.32	0.47
1:X:105:GLY:C	1:X:107:GLU:N	2.67	0.47
1:X:57:GLY:HA2	3:X:434:FAD:C5X	2.44	0.47
1:X:214:SER:HA	1:X:217:ILE:HD12	1.96	0.47
1:X:366:LEU:O	3:X:434:FAD:H8A	2.15	0.47
1:X:371:TRP:CD1	2:X:433:HNM:H8	2.49	0.47
1:X:240:VAL:HG12	1:X:241[B]:LYS:N	2.30	0.47

*Continued on next page...*

*Continued from previous page...*

Atom-1	Atom-2	Interatomic distance (Å)	Clash overlap (Å)
1:X:241[A]:LYS:HB3	5:X:635:HOH:O	2.14	0.46
1:X:310:LEU:HA	5:X:473[B]:HOH:O	2.15	0.46
1:X:352:GLU:HA	5:X:474[A]:HOH:O	2.14	0.46
1:X:406:GLY:O	3:X:434:FAD:H1'2	2.15	0.46
1:X:61:HIS:HE1	1:X:63:LYS:CE	2.25	0.46
1:X:130:GLY:HA3	1:X:384:LYS:HB2	1.98	0.46
1:X:141:ILE:HB	1:X:142:PRO:CD	2.46	0.46
4:X:435:GP7:O4P	4:X:435:GP7:H2	2.16	0.45
1:X:104:PRO:O	1:X:107:GLU:HB2	2.17	0.45
1:X:424:HIS:O	1:X:425:SER:CB	2.50	0.45
1:X:62:ARG:HG3	1:X:200:GLU:OE2	2.17	0.45
1:X:172:ALA:HB3	5:X:764:HOH:O	2.17	0.45
1:X:119:LEU:O	1:X:123:HIS:HD2	2.00	0.44
1:X:141:ILE:HB	1:X:142:PRO:HD2	1.98	0.44
1:X:152:LEU:HB3	1:X:157:ARG:HB2	1.99	0.44
1:X:43:ARG:HH11	1:X:43:ARG:CG	2.30	0.44
1:X:388:GLU:HG3	1:X:389:PRO:HD2	1.98	0.44
1:X:240:VAL:HG13	1:X:241[B]:LYS:N	2.32	0.44
1:X:240:VAL:HG13	1:X:241[B]:LYS:H	1.83	0.44
1:X:403:GLU:HB3	1:X:404:PHE:CD2	2.53	0.43
1:X:123:HIS:HE1	5:X:798[A]:HOH:O	2.02	0.43
1:X:168:LEU:HD23	1:X:175:ALA:HB1	2.01	0.43
1:X:192:LEU:HD23	1:X:192:LEU:HA	1.86	0.43
1:X:165:TRP:HE1	1:X:328:ASP:HB3	1.83	0.43
1:X:240:VAL:HG12	1:X:241[A]:LYS:N	2.34	0.42
1:X:221:ARG:HH11	1:X:221:ARG:HG3	1.84	0.42
1:X:228:GLY:HA3	5:X:795[B]:HOH:O	2.18	0.42
1:X:41:TYR:HE2	5:X:480:HOH:O	2.03	0.42
1:X:43:ARG:HG3	1:X:44:GLU:O	2.20	0.42
1:X:91:ARG:NH2	5:X:663[B]:HOH:O	1.65	0.42
1:X:64:HIS:O	1:X:65:HIS:CD2	2.73	0.41
1:X:403:GLU:OE2	1:X:404:PHE:CE2	2.73	0.41
1:X:41:TYR:CZ	1:X:43:ARG:HD3	2.54	0.41
1:X:366:LEU:HD23	1:X:366:LEU:HA	1.90	0.41
1:X:129:LYS:HE2	1:X:129:LYS:HB3	1.88	0.41
1:X:61:HIS:HE1	1:X:63:LYS:HG2	1.82	0.41
1:X:196:LEU:HD23	1:X:196:LEU:HA	1.91	0.41
1:X:221:ARG:HG3	1:X:221:ARG:NH1	2.36	0.40
1:X:404:PHE:CD2	1:X:404:PHE:N	2.89	0.40
1:X:75:TYR:CD1	1:X:212:ALA:HB1	2.57	0.40

There are no symmetry-related clashes.

## 5.3 Torsion angles [i](#)

### 5.3.1 Protein backbone [i](#)

In the following table, the Percentiles column shows the percent Ramachandran outliers of the chain as a percentile score with respect to all X-ray entries followed by that with respect to entries of similar resolution.

The Analysed column shows the number of residues for which the backbone conformation was analysed, and the total number of residues.

Mol	Chain	Analysed	Favoured	Allowed	Outliers	Percentiles
1	X	431/431 (100%)	398 (92%)	31 (7%)	2 (0%)	29 57

All (2) Ramachandran outliers are listed below:

Mol	Chain	Res	Type
1	X	370	PRO
1	X	106	SER

### 5.3.2 Protein sidechains [i](#)

In the following table, the Percentiles column shows the percent sidechain outliers of the chain as a percentile score with respect to all X-ray entries followed by that with respect to entries of similar resolution.

The Analysed column shows the number of residues for which the sidechain conformation was analysed, and the total number of residues.

Mol	Chain	Analysed	Rotameric	Outliers	Percentiles
1	X	348/348 (100%)	321 (92%)	27 (8%)	12 32

All (27) residues with a non-rotameric sidechain are listed below:

Mol	Chain	Res	Type
1	X	1	MET
1	X	26	LYS
1	X	29	LEU
1	X	42	SER
1	X	43	ARG
1	X	55	ILE
1	X	60	LEU
1	X	62	ARG
1	X	97	VAL

*Continued on next page...*

*Continued from previous page...*

Mol	Chain	Res	Type
1	X	118	LEU
1	X	149	LYS
1	X	197	SER
1	X	198	LEU
1	X	215	GLN
1	X	223	GLN
1	X	239	THR
1	X	241[A]	LYS
1	X	241[B]	LYS
1	X	250	SER
1	X	264	VAL
1	X	269	LEU
1	X	293	ARG
1	X	296	GLU
1	X	328	ASP
1	X	403	GLU
1	X	404	PHE
1	X	417	CYS

Sometimes sidechains can be flipped to improve hydrogen bonding and reduce clashes. All (8) such sidechains are listed below:

Mol	Chain	Res	Type
1	X	61	HIS
1	X	65	HIS
1	X	123	HIS
1	X	133	ASN
1	X	215	GLN
1	X	223	GLN
1	X	281	HIS
1	X	383	HIS

### 5.3.3 RNA [i](#)

There are no RNA molecules in this entry.

## 5.4 Non-standard residues in protein, DNA, RNA chains [i](#)

There are no non-standard protein/DNA/RNA residues in this entry.

## 5.5 Carbohydrates [i](#)

There are no monosaccharides in this entry.

## 5.6 Ligand geometry [i](#)

3 ligands are modelled in this entry.

In the following table, the Counts columns list the number of bonds (or angles) for which Mogul statistics could be retrieved, the number of bonds (or angles) that are observed in the model and the number of bonds (or angles) that are defined in the Chemical Component Dictionary. The Link column lists molecule types, if any, to which the group is linked. The Z score for a bond length (or angle) is the number of standard deviations the observed value is removed from the expected value. A bond length (or angle) with  $|Z| > 2$  is considered an outlier worth inspection. RMSZ is the root-mean-square of all Z scores of the bond lengths (or angles).

Mol	Type	Chain	Res	Link	Bond lengths			Bond angles		
					Counts	RMSZ	# Z  > 2	Counts	RMSZ	# Z  > 2
3	FAD	X	434	-	53,58,58	1.19	5 (9%)	68,89,89	1.73	15 (22%)
2	HNM	X	433	-	14,14,14	1.00	1 (7%)	16,17,17	2.58	6 (37%)
4	GP7	X	435	-	42,42,45	1.64	8 (19%)	46,47,50	1.43	6 (13%)

In the following table, the Chirals column lists the number of chiral outliers, the number of chiral centers analysed, the number of these observed in the model and the number defined in the Chemical Component Dictionary. Similar counts are reported in the Torsion and Rings columns. '-' means no outliers of that kind were identified.

Mol	Type	Chain	Res	Link	Chirals	Torsions	Rings
3	FAD	X	434	-	-	6/30/50/50	0/6/6/6
2	HNM	X	433	-	-	3/9/9/9	0/1/1/1
4	GP7	X	435	-	-	23/44/44/49	-

All (14) bond length outliers are listed below:

Mol	Chain	Res	Type	Atoms	Z	Observed(Å)	Ideal(Å)
4	X	435	GP7	O2-C31	5.26	1.49	1.34
3	X	434	FAD	C4X-N5	4.56	1.39	1.30
4	X	435	GP7	C40-C39	4.39	1.57	1.31
4	X	435	GP7	O3-C11	4.07	1.45	1.33
4	X	435	GP7	C43-C42	3.59	1.52	1.31
2	X	433	HNM	C8-C7	-2.89	1.46	1.51
3	X	434	FAD	C10-N1	2.81	1.39	1.33
4	X	435	GP7	C36-C35	2.67	1.66	1.51

*Continued on next page...*

Continued from previous page...

Mol	Chain	Res	Type	Atoms	Z	Observed(Å)	Ideal(Å)
4	X	435	GP7	C37-C38	2.66	1.62	1.52
3	X	434	FAD	C2A-N3A	2.60	1.36	1.32
3	X	434	FAD	O4B-C4B	-2.15	1.40	1.45
4	X	435	GP7	C41-C40	2.07	1.65	1.51
3	X	434	FAD	C2A-N1A	2.05	1.37	1.33
4	X	435	GP7	C33-C32	2.05	1.59	1.52

All (27) bond angle outliers are listed below:

Mol	Chain	Res	Type	Atoms	Z	Observed(°)	Ideal(°)
3	X	434	FAD	N3A-C2A-N1A	-7.07	117.62	128.68
2	X	433	HNM	C9-C8-C7	-6.64	101.41	113.62
4	X	435	GP7	O2-C31-C32	4.93	122.13	111.50
2	X	433	HNM	O7-C7-C3	3.38	125.51	120.74
3	X	434	FAD	C2A-N1A-C6A	3.34	124.47	118.75
3	X	434	FAD	O2'-C2'-C3'	-3.26	101.17	109.10
2	X	433	HNM	C5-C4-C3	-3.25	116.99	120.78
2	X	433	HNM	C10-C9-C8	-3.24	103.22	112.84
3	X	434	FAD	C4'-C3'-C2'	-3.12	106.86	113.36
3	X	434	FAD	C1B-N9A-C4A	-2.82	121.69	126.64
3	X	434	FAD	O4-C4-C4X	-2.80	119.18	126.60
3	X	434	FAD	C4X-C4-N3	2.76	120.19	113.19
4	X	435	GP7	O2-C31-O31	-2.64	117.33	123.70
2	X	433	HNM	C4-C3-C2	2.59	120.57	117.63
4	X	435	GP7	C36-C37-C38	2.58	125.02	113.79
3	X	434	FAD	C4-C4X-N5	2.47	121.75	118.23
3	X	434	FAD	O4B-C1B-C2B	-2.44	103.36	106.93
2	X	433	HNM	O7-C7-C8	-2.43	116.22	120.38
3	X	434	FAD	C9A-C5X-N5	-2.43	119.79	122.43
3	X	434	FAD	C5'-C4'-C3'	-2.35	107.66	112.20
4	X	435	GP7	O3-C11-C12	2.35	119.28	111.91
3	X	434	FAD	C4-N3-C2	-2.32	121.35	125.64
3	X	434	FAD	C10-C4X-N5	-2.22	120.14	124.86
4	X	435	GP7	O4P-P-O3P	-2.15	101.01	106.73
3	X	434	FAD	C5X-C9A-N10	2.15	120.17	117.95
4	X	435	GP7	C42-C41-C40	2.12	122.48	112.02
3	X	434	FAD	C1'-N10-C9A	2.03	123.89	120.51

There are no chirality outliers.

All (32) torsion outliers are listed below:



Mol	Chain	Res	Type	Atoms
4	X	435	GP7	C2-C1-O3P-P
4	X	435	GP7	O31-C31-O2-C2
4	X	435	GP7	C39-C40-C41-C42
4	X	435	GP7	C32-C31-O2-C2
4	X	435	GP7	C15-C16-C17-C18
4	X	435	GP7	C32-C33-C34-C35
4	X	435	GP7	C18-C19-C20-C21
4	X	435	GP7	C43-C44-C45-C46
4	X	435	GP7	C31-C32-C33-C34
2	X	433	HNM	N11-C10-C9-C8
3	X	434	FAD	O2'-C2'-C3'-O3'
4	X	435	GP7	O3P-C1-C2-C3
2	X	433	HNM	O7-C7-C8-C9
2	X	433	HNM	C3-C7-C8-C9
4	X	435	GP7	C40-C41-C42-C43
4	X	435	GP7	O3P-C1-C2-O2
4	X	435	GP7	C35-C36-C37-C38
4	X	435	GP7	C34-C35-C36-C37
3	X	434	FAD	PA-O3P-P-O5'
4	X	435	GP7	C38-C39-C40-C41
4	X	435	GP7	C1-C2-C3-O3
4	X	435	GP7	C21-C22-C23-C24
3	X	434	FAD	N10-C1'-C2'-C3'
4	X	435	GP7	C3-C2-O2-C31
3	X	434	FAD	O2'-C2'-C3'-C4'
4	X	435	GP7	C41-C42-C43-C44
4	X	435	GP7	O11-C11-O3-C3
4	X	435	GP7	C12-C11-O3-C3
4	X	435	GP7	C16-C17-C18-C19
3	X	434	FAD	O4B-C4B-C5B-O5B
4	X	435	GP7	C19-C20-C21-C22
3	X	434	FAD	C1'-C2'-C3'-O3'

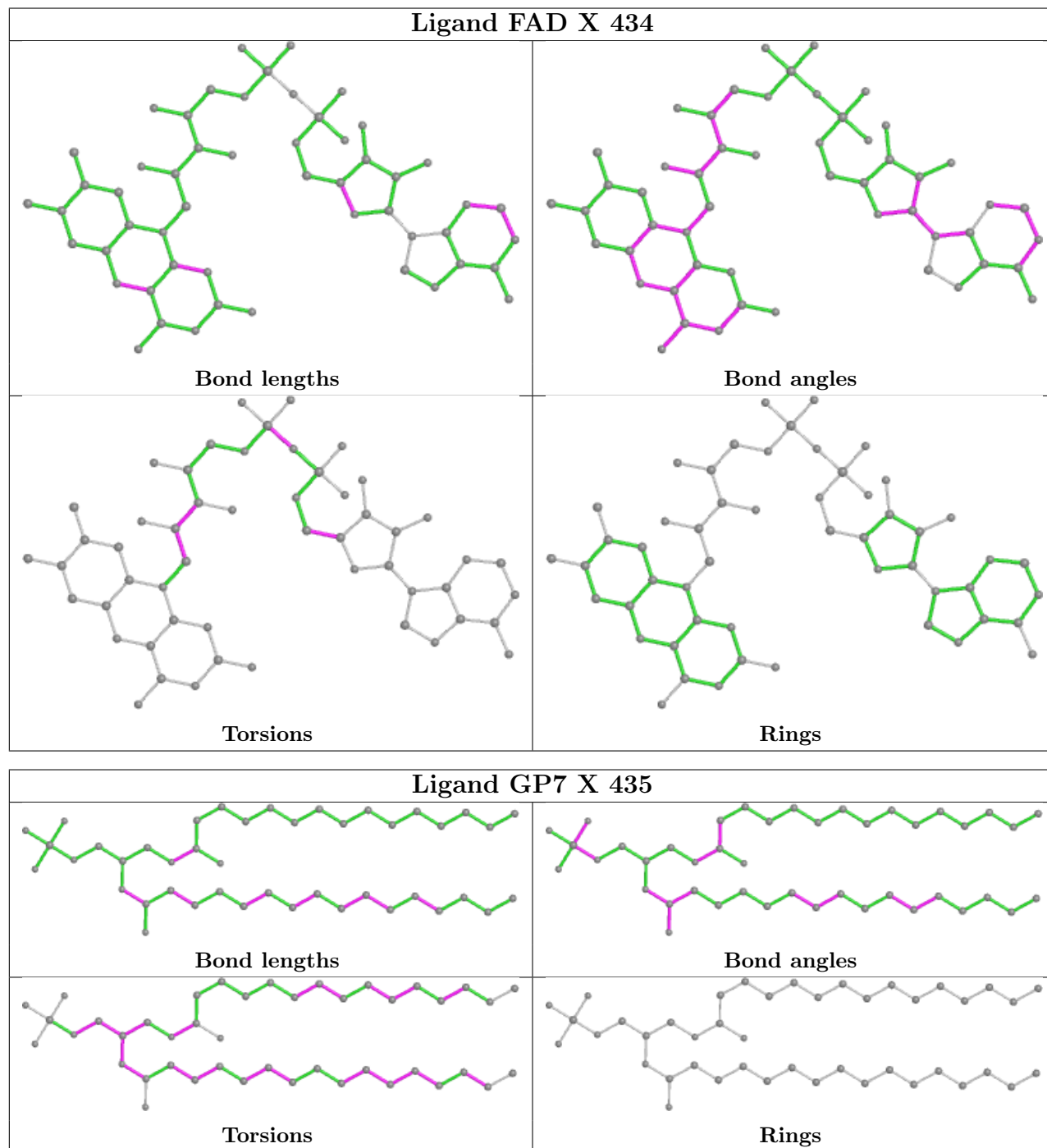
There are no ring outliers.

3 monomers are involved in 13 short contacts:

Mol	Chain	Res	Type	Clashes	Symm-Clashes
3	X	434	FAD	6	0
2	X	433	HNM	2	0
4	X	435	GP7	5	0

The following is a two-dimensional graphical depiction of Mogul quality analysis of bond lengths, bond angles, torsion angles, and ring geometry for all instances of the Ligand of Interest. In

addition, ligands with molecular weight  $> 250$  and outliers as shown on the validation Tables will also be included. For torsion angles, if less than 5% of the Mogul distribution of torsion angles is within 10 degrees of the torsion angle in question, then that torsion angle is considered an outlier. Any bond that is central to one or more torsion angles identified as an outlier by Mogul will be highlighted in the graph. For rings, the root-mean-square deviation (RMSD) between the ring in question and similar rings identified by Mogul is calculated over all ring torsion angles. If the average RMSD is greater than 60 degrees and the minimal RMSD between the ring in question and any Mogul-identified rings is also greater than 60 degrees, then that ring is considered an outlier. The outliers are highlighted in purple. The color gray indicates Mogul did not find sufficient equivalents in the CSD to analyse the geometry.



## 5.7 Other polymers [i](#)

There are no such residues in this entry.

## 5.8 Polymer linkage issues [i](#)

There are no chain breaks in this entry.

## 6 Fit of model and data [i](#)

### 6.1 Protein, DNA and RNA chains [i](#)

In the following table, the column labelled ‘#RSRZ> 2’ contains the number (and percentage) of RSRZ outliers, followed by percent RSRZ outliers for the chain as percentile scores relative to all X-ray entries and entries of similar resolution. The OWAB column contains the minimum, median, 95<sup>th</sup> percentile and maximum values of the occupancy-weighted average B-factor per residue. The column labelled ‘Q< 0.9’ lists the number of (and percentage) of residues with an average occupancy less than 0.9.

Mol	Chain	Analysed	<RSRZ>	#RSRZ>2	OWAB(Å <sup>2</sup> )	Q<0.9
1	X	425/431 (98%)	-0.03	13 (3%) 49 44	22, 45, 62, 74	2 (0%)

All (13) RSRZ outliers are listed below:

Mol	Chain	Res	Type	RSRZ
1	X	242[A]	ASP	4.0
1	X	425	SER	3.6
1	X	241[A]	LYS	3.3
1	X	317	SER	3.1
1	X	271	GLU	2.8
1	X	84	GLU	2.8
1	X	128	GLU	2.6
1	X	272	ARG	2.6
1	X	151	ASP	2.3
1	X	167	MET	2.3
1	X	83	SER	2.2
1	X	133	ASN	2.1
1	X	81	ALA	2.0

### 6.2 Non-standard residues in protein, DNA, RNA chains [i](#)

There are no non-standard protein/DNA/RNA residues in this entry.

### 6.3 Carbohydrates [i](#)

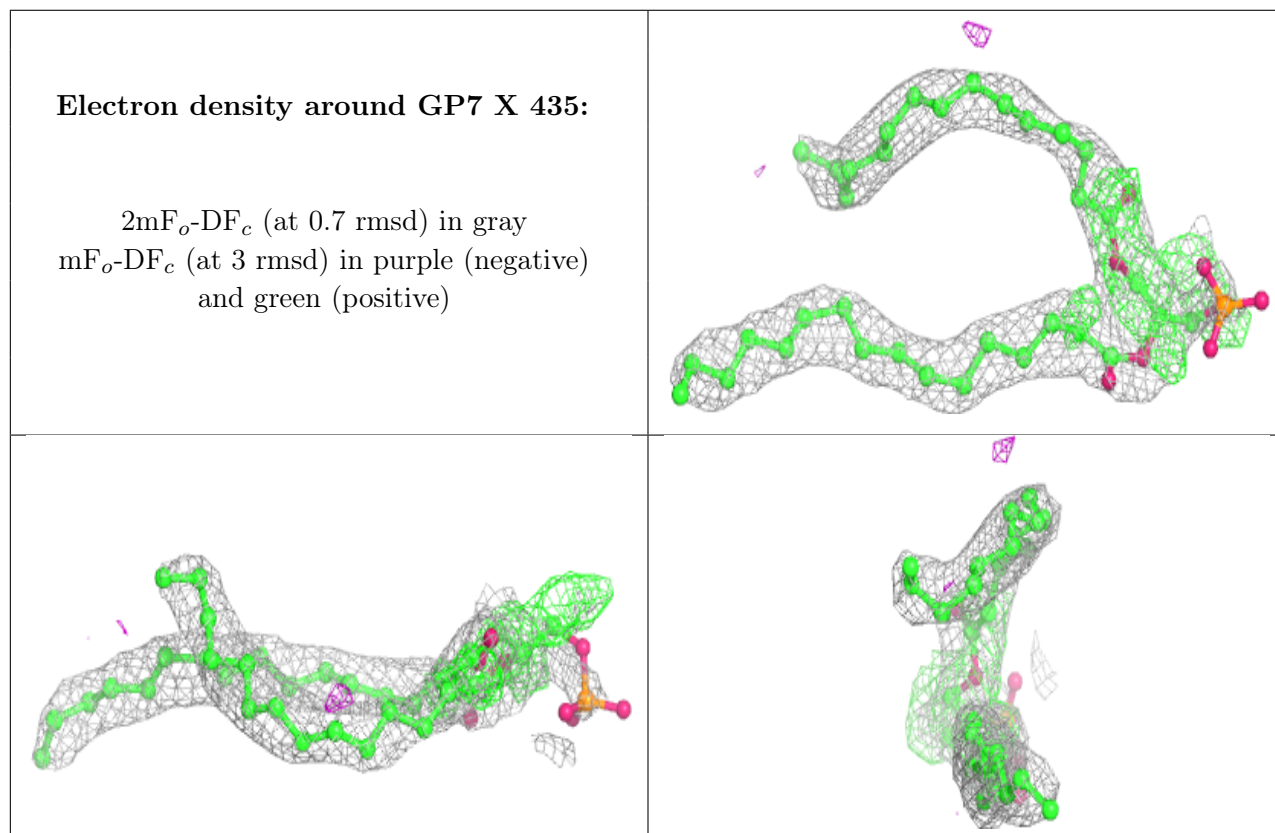
There are no monosaccharides in this entry.

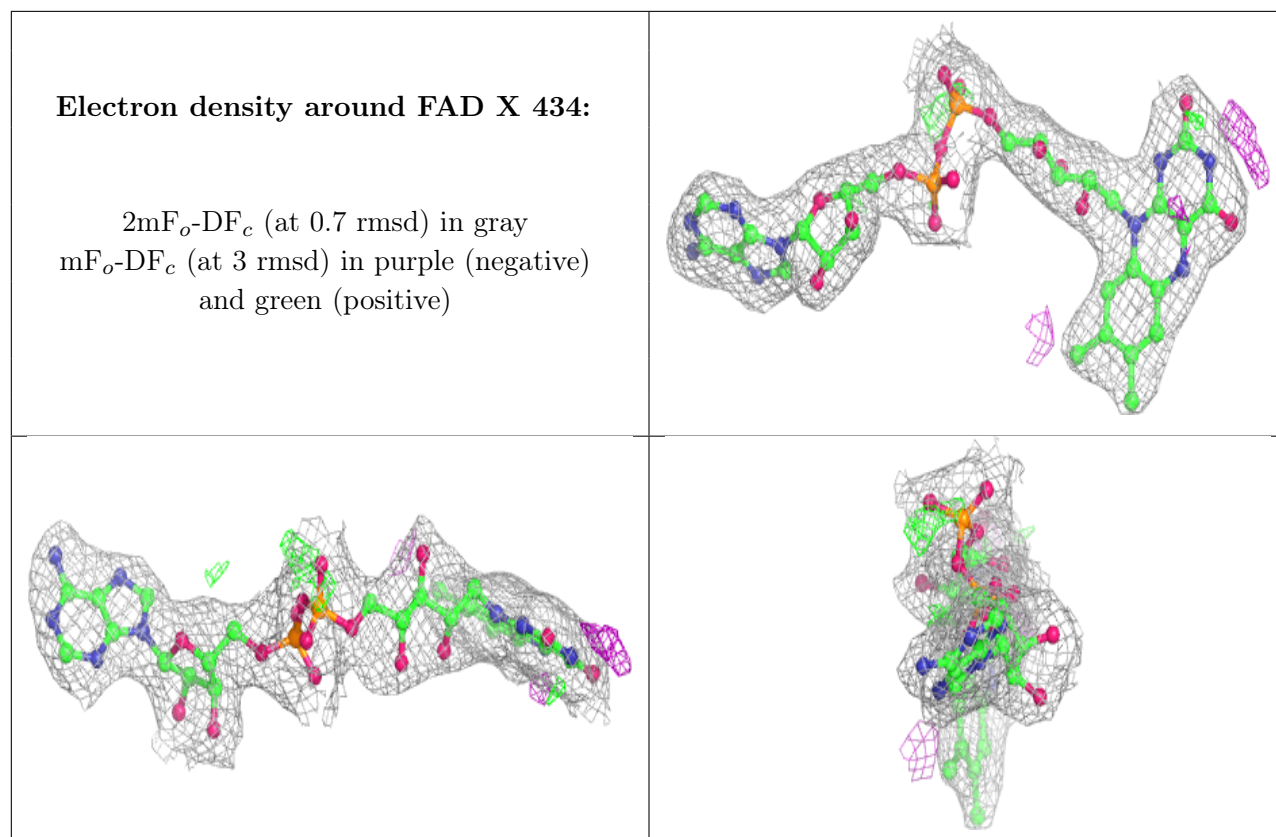
## 6.4 Ligands [i](#)

In the following table, the Atoms column lists the number of modelled atoms in the group and the number defined in the chemical component dictionary. The B-factors column lists the minimum, median, 95<sup>th</sup> percentile and maximum values of B factors of atoms in the group. The column labelled 'Q<0.9' lists the number of atoms with occupancy less than 0.9.

Mol	Type	Chain	Res	Atoms	RSCC	RSR	B-factors(Å <sup>2</sup> )	Q<0.9
2	HNM	X	433	14/14	0.90	0.60	35,44,46,48	14
4	GP7	X	435	43/46	0.90	0.24	32,43,50,52	16
3	FAD	X	434	53/53	0.96	0.27	29,40,42,45	0

The following is a graphical depiction of the model fit to experimental electron density of all instances of the Ligand of Interest. In addition, ligands with molecular weight > 250 and outliers as shown on the geometry validation Tables will also be included. Each fit is shown from different orientation to approximate a three-dimensional view.





## 6.5 Other polymers [i](#)

There are no such residues in this entry.