



Full wwPDB X-ray Structure Validation Report ⓘ

Mar 10, 2018 – 03:44 am GMT

PDB ID : 3NKA
Title : Crystal structure of AqpZ H174G,T183F
Authors : Savage, D.F.; O'Connell III, J.D.; Finer-Moore, J.; Stroud, R.M.
Deposited on : 2010-06-18
Resolution : 2.50 Å(reported)

This is a Full wwPDB X-ray Structure Validation Report for a publicly released PDB entry.

We welcome your comments at validation@mail.wwpdb.org

A user guide is available at

<https://www.wwpdb.org/validation/2017/XrayValidationReportHelp>

with specific help available everywhere you see the ⓘ symbol.

The following versions of software and data (see [references ⓘ](#)) were used in the production of this report:

MolProbity : 4.02b-467
Mogul : 1.7.3 (157068), CSD as539be (2018)
Xtriage (Phenix) : 1.13
EDS : trunk30967
Percentile statistics : 20171227.v01 (using entries in the PDB archive December 27th 2017)
Refmac : 5.8.0158
CCP4 : 7.0 (Gargrove)
Ideal geometry (proteins) : Engh & Huber (2001)
Ideal geometry (DNA, RNA) : Parkinson et al. (1996)
Validation Pipeline (wwPDB-VP) : trunk30967

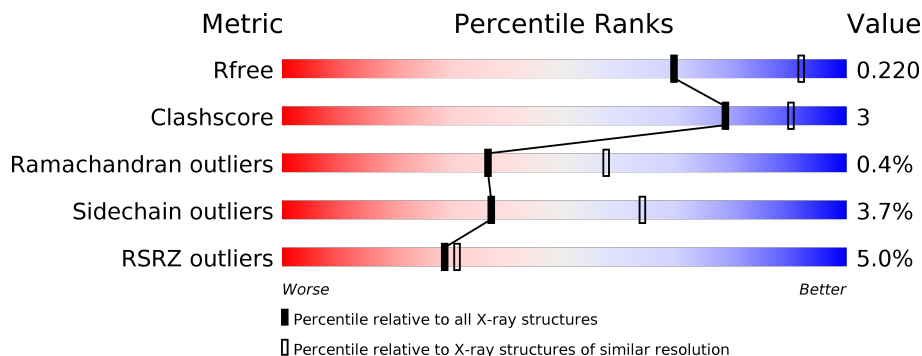
1 Overall quality at a glance

The following experimental techniques were used to determine the structure:

X-RAY DIFFRACTION

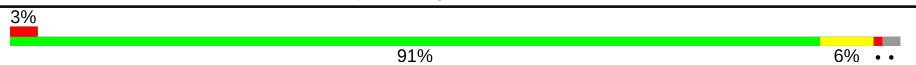

The reported resolution of this entry is 2.50 Å.

Percentile scores (ranging between 0-100) for global validation metrics of the entry are shown in the following graphic. The table shows the number of entries on which the scores are based.



Metric	Whole archive (#Entries)	Similar resolution (#Entries, resolution range(Å))
R_{free}	111664	4155 (2.50-2.50)
Clashscore	122126	4827 (2.50-2.50)
Ramachandran outliers	120053	4735 (2.50-2.50)
Sidechain outliers	120020	4737 (2.50-2.50)
RSRZ outliers	108989	4058 (2.50-2.50)

The table below summarises the geometric issues observed across the polymeric chains and their fit to the electron density. The red, orange, yellow and green segments on the lower bar indicate the fraction of residues that contain outliers for ≥ 3 , 2, 1 and 0 types of geometric quality criteria. A grey segment represents the fraction of residues that are not modelled. The numeric value for each fraction is indicated below the corresponding segment, with a dot representing fractions $\leq 5\%$. The upper red bar (where present) indicates the fraction of residues that have poor fit to the electron density. The numeric value is given above the bar.

Mol	Chain	Length	Quality of chain
1	A	234	 3% 91% 6%
1	B	234	 7% 90% 8%

2 Entry composition

There are 4 unique types of molecules in this entry. The entry contains 3530 atoms, of which 0 are hydrogens and 0 are deuteriums.

In the tables below, the ZeroOcc column contains the number of atoms modelled with zero occupancy, the AltConf column contains the number of residues with at least one atom in alternate conformation and the Trace column contains the number of residues modelled with at most 2 atoms.

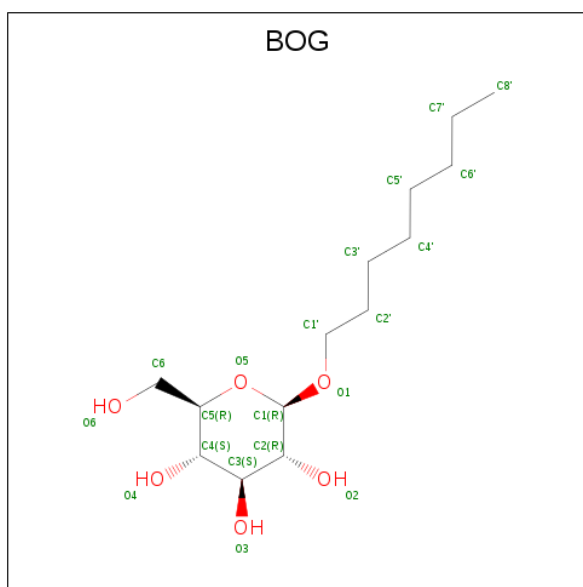
- Molecule 1 is a protein called Aquaporin Z.

Mol	Chain	Residues	Atoms					ZeroOcc	AltConf	Trace
			Total	C	N	O	S			
1	A	230	Total	C	N	O	S	0	0	0
			1666	1110	268	283	5			
1	B	233	Total	C	N	O	S	0	0	0
			1691	1125	275	286	5			

There are 10 discrepancies between the modelled and reference sequences:

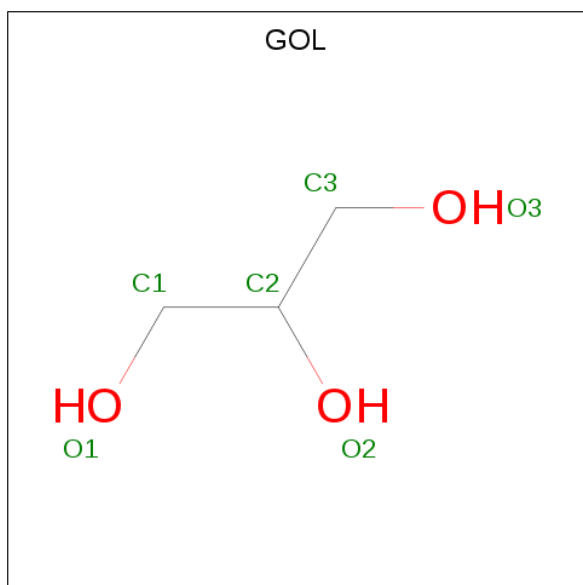
Chain	Residue	Modelled	Actual	Comment	Reference
A	-2	ALA	-	EXPRESSION TAG	UNP P60844
A	-1	SER	-	EXPRESSION TAG	UNP P60844
A	0	HIS	-	EXPRESSION TAG	UNP P60844
A	174	GLY	HIS	ENGINEERED MUTATION	UNP P60844
A	183	PHE	THR	ENGINEERED MUTATION	UNP P60844
B	-2	ALA	-	EXPRESSION TAG	UNP P60844
B	-1	SER	-	EXPRESSION TAG	UNP P60844
B	0	HIS	-	EXPRESSION TAG	UNP P60844
B	174	GLY	HIS	ENGINEERED MUTATION	UNP P60844
B	183	PHE	THR	ENGINEERED MUTATION	UNP P60844

- Molecule 2 is B-OCTYLGLUCOSIDE (three-letter code: BOG) (formula: C₁₄H₂₈O₆).



Mol	Chain	Residues	Atoms		ZeroOcc	AltConf
2	A	1	Total	C O	0	0
			20	14 6		
2	A	1	Total	C O	0	0
			20	14 6		
2	A	1	Total	C O	0	0
			20	14 6		
2	B	1	Total	C O	0	0
			20	14 6		

- Molecule 3 is GLYCEROL (three-letter code: GOL) (formula: $C_3H_8O_3$).



Mol	Chain	Residues	Atoms	ZeroOcc	AltConf
3	A	1	Total C O 6 3 3	0	0
3	A	1	Total C O 6 3 3	0	0
3	B	1	Total C O 6 3 3	0	0

- Molecule 4 is water.

Mol	Chain	Residues	Atoms	ZeroOcc	AltConf
4	A	53	Total O 53 53	0	0
4	B	22	Total O 22 22	0	0

3 Residue-property plots [i](#)


These plots are drawn for all protein, RNA and DNA chains in the entry. The first graphic for a chain summarises the proportions of the various outlier classes displayed in the second graphic. The second graphic shows the sequence view annotated by issues in geometry and electron density. Residues are color-coded according to the number of geometric quality criteria for which they contain at least one outlier: green = 0, yellow = 1, orange = 2 and red = 3 or more. A red dot above a residue indicates a poor fit to the electron density ($RSRZ > 2$). Stretches of 2 or more consecutive residues without any outlier are shown as a green connector. Residues present in the sample, but not in the model, are shown in grey.

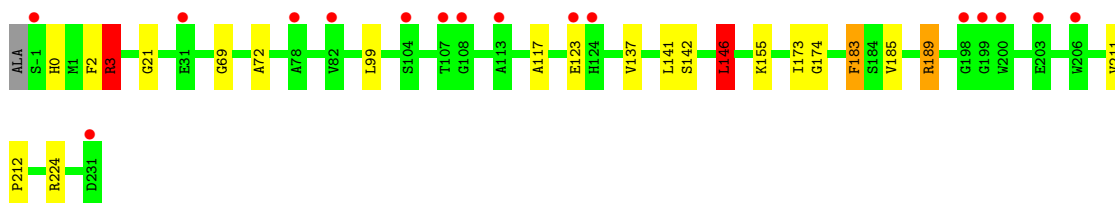
- Molecule 1: Aquaporin Z

Chain A: 



- Molecule 1: Aquaporin Z

Chain B: 



4 Data and refinement statistics i

Property	Value	Source
Space group	P 4	Depositor
Cell constants a, b, c, α , β , γ	92.78Å 92.78Å 78.92Å 90.00° 90.00° 90.00°	Depositor
Resolution (Å)	20.00 – 2.50 20.00 – 2.50	Depositor EDS
% Data completeness (in resolution range)	93.4 (20.00-2.50) 93.4 (20.00-2.50)	Depositor EDS
R_{merge}	0.06	Depositor
R_{sym}	0.06	Depositor
$\langle I/\sigma(I) \rangle$ ¹	1.88 (at 2.50Å)	Xtrriage
Refinement program	REFMAC, ELVES	Depositor
R, R_{free}	0.186 , 0.221 0.189 , 0.220	Depositor DCC
R_{free} test set	1120 reflections (5.15%)	wwPDB-VP
Wilson B-factor (Å ²)	53.5	Xtrriage
Anisotropy	0.081	Xtrriage
Bulk solvent k_{sol} (e/Å ³), B_{sol} (Å ²)	0.34 , 59.9	EDS
L-test for twinning ²	$\langle L \rangle = 0.47$, $\langle L^2 \rangle = 0.30$	Xtrriage
Estimated twinning fraction	0.064 for h,-k,-l	Xtrriage
F_o, F_c correlation	0.95	EDS
Total number of atoms	3530	wwPDB-VP
Average B, all atoms (Å ²)	55.0	wwPDB-VP

Xtrriage's analysis on translational NCS is as follows: *The largest off-origin peak in the Patterson function is 5.77% of the height of the origin peak. No significant pseudotranslation is detected.*

¹Intensities estimated from amplitudes.

²Theoretical values of $\langle |L| \rangle$, $\langle L^2 \rangle$ for acentric reflections are 0.5, 0.333 respectively for untwinned datasets, and 0.375, 0.2 for perfectly twinned datasets.

5 Model quality [i](#)

5.1 Standard geometry [i](#)

Bond lengths and bond angles in the following residue types are not validated in this section: GOL, BOG

The Z score for a bond length (or angle) is the number of standard deviations the observed value is removed from the expected value. A bond length (or angle) with $|Z| > 5$ is considered an outlier worth inspection. RMSZ is the root-mean-square of all Z scores of the bond lengths (or angles).

Mol	Chain	Bond lengths		Bond angles	
		RMSZ	# Z >5	RMSZ	# Z >5
1	A	1.09	6/1713 (0.4%)	0.96	6/2336 (0.3%)
1	B	0.99	5/1738 (0.3%)	0.93	5/2368 (0.2%)
All	All	1.04	11/3451 (0.3%)	0.94	11/4704 (0.2%)

Chiral center outliers are detected by calculating the chiral volume of a chiral center and verifying if the center is modelled as a planar moiety or with the opposite hand. A planarity outlier is detected by checking planarity of atoms in a peptide group, atoms in a mainchain group or atoms of a sidechain that are expected to be planar.

Mol	Chain	#Chirality outliers	#Planarity outliers
1	A	0	1
1	B	0	1
All	All	0	2

All (11) bond length outliers are listed below:

Mol	Chain	Res	Type	Atoms	Z	Observed(Å)	Ideal(Å)
1	B	183	PHE	CE1-CZ	-12.39	1.13	1.37
1	A	123	GLU	CD-OE2	12.09	1.39	1.25
1	B	183	PHE	CE2-CZ	-11.74	1.15	1.37
1	B	183	PHE	CG-CD2	-11.07	1.22	1.38
1	A	183	PHE	CE2-CZ	-11.02	1.16	1.37
1	A	183	PHE	CE1-CZ	-10.38	1.17	1.37
1	B	183	PHE	CG-CD1	-9.68	1.24	1.38
1	A	183	PHE	CG-CD1	-8.47	1.26	1.38
1	A	183	PHE	CG-CD2	-7.73	1.27	1.38
1	B	123	GLU	CD-OE2	7.53	1.33	1.25
1	A	27	ALA	CA-CB	5.76	1.64	1.52

All (11) bond angle outliers are listed below:

Mol	Chain	Res	Type	Atoms	Z	Observed(°)	Ideal(°)
1	A	3	ARG	NE-CZ-NH1	-18.47	111.06	120.30
1	B	3	ARG	NE-CZ-NH2	-18.31	111.14	120.30
1	A	3	ARG	NE-CZ-NH2	15.99	128.30	120.30
1	B	3	ARG	NE-CZ-NH1	15.18	127.89	120.30
1	A	3	ARG	CD-NE-CZ	9.08	136.31	123.60
1	B	3	ARG	CD-NE-CZ	8.54	135.55	123.60
1	A	183	PHE	CB-CG-CD1	7.26	125.88	120.80
1	B	146	LEU	CA-CB-CG	-5.79	101.98	115.30
1	A	146	LEU	CA-CB-CG	-5.75	102.08	115.30
1	A	3	ARG	CG-CD-NE	5.25	122.83	111.80
1	B	183	PHE	CB-CG-CD2	5.08	124.35	120.80

There are no chirality outliers.

All (2) planarity outliers are listed below:

Mol	Chain	Res	Type	Group
1	A	3	ARG	Sidechain
1	B	3	ARG	Sidechain

5.2 Too-close contacts [i](#)

In the following table, the Non-H and H(model) columns list the number of non-hydrogen atoms and hydrogen atoms in the chain respectively. The H(added) column lists the number of hydrogen atoms added and optimized by MolProbity. The Clashes column lists the number of clashes within the asymmetric unit, whereas Symm-Clashes lists symmetry related clashes.

Mol	Chain	Non-H	H(model)	H(added)	Clashes	Symm-Clashes
1	A	1666	0	1689	9	0
1	B	1691	0	1717	11	0
2	A	60	0	84	0	0
2	B	20	0	28	1	0
3	A	12	0	16	3	0
3	B	6	0	8	0	0
4	A	53	0	0	1	0
4	B	22	0	0	1	0
All	All	3530	0	3542	22	0

The all-atom clashscore is defined as the number of clashes found per 1000 atoms (including hydrogen atoms). The all-atom clashscore for this structure is 3.

All (22) close contacts within the same asymmetric unit are listed below, sorted by their clash magnitude.

Atom-1	Atom-2	Interatomic distance (Å)	Clash overlap (Å)
1:A:69:GLY:HA3	1:A:146:LEU:HD22	1.53	0.87
1:B:117:ALA:O	1:B:189:ARG:NH2	2.11	0.84
1:A:117:ALA:O	1:A:189:ARG:NH2	2.13	0.81
1:B:69:GLY:HA3	1:B:146:LEU:HD22	1.63	0.80
3:A:236:GOL:O3	4:A:247:HOH:O	2.01	0.76
1:A:39:VAL:HG11	3:A:236:GOL:H12	1.66	0.75
1:B:183:PHE:O	1:B:189:ARG:NH1	2.23	0.71
1:A:183:PHE:O	1:A:189:ARG:NH1	2.32	0.61
1:B:69:GLY:HA3	1:B:146:LEU:CD2	2.35	0.56
1:B:174:GLY:HA2	1:B:183:PHE:CD2	2.42	0.53
1:B:2:PHE:HD2	1:B:3:ARG:HD2	1.75	0.52
1:A:69:GLY:HA3	1:A:146:LEU:CD2	2.34	0.51
1:A:21:GLY:HA2	1:A:99:LEU:HD11	1.92	0.51
1:B:21:GLY:HA2	1:B:99:LEU:HD11	1.94	0.49
2:B:232:BOG:H8'3	4:B:254:HOH:O	2.14	0.46
1:A:178:ILE:HD13	3:A:236:GOL:H11	1.99	0.44
1:B:211:VAL:HB	1:B:212:PRO:HD3	2.00	0.43
1:A:73:GLY:HA3	1:A:150:HIS:NE2	2.35	0.42
1:B:141:LEU:HD13	1:B:173:ILE:HG23	2.00	0.42
1:A:2:PHE:HD2	1:A:3:ARG:HD3	1.86	0.41
1:B:173:ILE:HG22	1:B:183:PHE:HE2	1.85	0.41
1:B:72:ALA:O	1:B:224:ARG:NH1	2.53	0.40

There are no symmetry-related clashes.

5.3 Torsion angles [i](#)

5.3.1 Protein backbone [i](#)

In the following table, the Percentiles column shows the percent Ramachandran outliers of the chain as a percentile score with respect to all X-ray entries followed by that with respect to entries of similar resolution.

The Analysed column shows the number of residues for which the backbone conformation was analysed, and the total number of residues.

Mol	Chain	Analysed	Favoured	Allowed	Outliers	Percentiles	
1	A	228/234 (97%)	216 (95%)	11 (5%)	1 (0%)	36	57
1	B	231/234 (99%)	220 (95%)	10 (4%)	1 (0%)	36	57
All	All	459/468 (98%)	436 (95%)	21 (5%)	2 (0%)	36	57

All (2) Ramachandran outliers are listed below:

Mol	Chain	Res	Type
1	B	185	VAL
1	A	185	VAL

5.3.2 Protein sidechains [i](#)

In the following table, the Percentiles column shows the percent sidechain outliers of the chain as a percentile score with respect to all X-ray entries followed by that with respect to entries of similar resolution.

The Analysed column shows the number of residues for which the sidechain conformation was analysed, and the total number of residues.

Mol	Chain	Analysed	Rotameric	Outliers	Percentiles	
1	A	160/163 (98%)	154 (96%)	6 (4%)	36	62
1	B	162/163 (99%)	156 (96%)	6 (4%)	37	64
All	All	322/326 (99%)	310 (96%)	12 (4%)	37	64

All (12) residues with a non-rotameric sidechain are listed below:

Mol	Chain	Res	Type
1	A	3	ARG
1	A	137	VAL
1	A	146	LEU
1	A	155	LYS
1	A	183	PHE
1	A	189	ARG
1	B	0	HIS
1	B	137	VAL
1	B	142	SER
1	B	146	LEU
1	B	155	LYS
1	B	189	ARG

Some sidechains can be flipped to improve hydrogen bonding and reduce clashes. All (2) such sidechains are listed below:

Mol	Chain	Res	Type
1	A	124	HIS
1	B	124	HIS

5.3.3 RNA [i](#)

There are no RNA molecules in this entry.

5.4 Non-standard residues in protein, DNA, RNA chains [i](#)

There are no non-standard protein/DNA/RNA residues in this entry.

5.5 Carbohydrates [i](#)

There are no carbohydrates in this entry.

5.6 Ligand geometry [i](#)

7 ligands are modelled in this entry.

In the following table, the Counts columns list the number of bonds (or angles) for which Mogul statistics could be retrieved, the number of bonds (or angles) that are observed in the model and the number of bonds (or angles) that are defined in the Chemical Component Dictionary. The Link column lists molecule types, if any, to which the group is linked. The Z score for a bond length (or angle) is the number of standard deviations the observed value is removed from the expected value. A bond length (or angle) with $|Z| > 2$ is considered an outlier worth inspection. RMSZ is the root-mean-square of all Z scores of the bond lengths (or angles).

Mol	Type	Chain	Res	Link	Bond lengths			Bond angles		
					Counts	RMSZ	# Z > 2	Counts	RMSZ	# Z > 2
2	BOG	A	232	-	20,20,20	0.64	0	25,25,25	1.17	2 (8%)
2	BOG	A	233	-	20,20,20	1.04	1 (5%)	25,25,25	2.03	6 (24%)
2	BOG	A	234	-	20,20,20	1.02	1 (5%)	25,25,25	1.54	5 (20%)
3	GOL	A	235	-	5,5,5	0.53	0	5,5,5	0.27	0
3	GOL	A	236	-	5,5,5	0.62	0	5,5,5	1.94	1 (20%)
2	BOG	B	232	-	20,20,20	1.01	1 (5%)	25,25,25	1.29	2 (8%)
3	GOL	B	233	-	5,5,5	0.52	0	5,5,5	0.43	0

In the following table, the Chirals column lists the number of chiral outliers, the number of chiral centers analysed, the number of these observed in the model and the number defined in the Chemical Component Dictionary. Similar counts are reported in the Torsion and Rings columns. '-' means no outliers of that kind were identified.

Mol	Type	Chain	Res	Link	Chirals	Torsions	Rings
2	BOG	A	232	-	-	0/11/31/31	0/1/1/1
2	BOG	A	233	-	-	0/11/31/31	0/1/1/1

Continued on next page...

Continued from previous page...

Mol	Type	Chain	Res	Link	Chirals	Torsions	Rings
2	BOG	A	234	-	-	0/11/31/31	0/1/1/1
3	GOL	A	235	-	-	0/4/4/4	0/0/0/0
3	GOL	A	236	-	-	0/4/4/4	0/0/0/0
2	BOG	B	232	-	-	0/11/31/31	0/1/1/1
3	GOL	B	233	-	-	0/4/4/4	0/0/0/0

All (3) bond length outliers are listed below:

Mol	Chain	Res	Type	Atoms	Z	Observed(Å)	Ideal(Å)
2	A	234	BOG	O1-C1	3.00	1.45	1.40
2	B	232	BOG	O1-C1	3.12	1.45	1.40
2	A	233	BOG	O1-C1	3.56	1.46	1.40

All (16) bond angle outliers are listed below:

Mol	Chain	Res	Type	Atoms	Z	Observed(°)	Ideal(°)
3	A	236	GOL	O2-C2-C1	-3.45	93.26	109.00
2	A	234	BOG	O5-C1-C2	-2.62	104.72	110.34
2	A	232	BOG	C1-O5-C5	-2.61	108.57	113.71
2	A	233	BOG	O2-C2-C1	-2.53	103.84	110.06
2	B	232	BOG	O2-C2-C3	-2.18	105.24	110.34
2	A	234	BOG	O5-C1-O1	2.03	114.76	109.96
2	A	233	BOG	O5-C1-C2	2.11	114.87	110.34
2	A	233	BOG	O3-C3-C2	2.27	115.65	110.34
2	A	232	BOG	O5-C5-C6	2.60	112.95	106.43
2	A	234	BOG	O1-C1-C2	3.01	113.11	108.24
2	A	234	BOG	O5-C5-C6	3.26	114.63	106.43
2	A	234	BOG	C3-C4-C5	3.45	116.41	110.24
2	A	233	BOG	O5-C5-C4	3.99	117.02	109.69
2	A	233	BOG	O1-C1-C2	4.94	116.23	108.24
2	B	232	BOG	O1-C1-C2	4.94	116.23	108.24
2	A	233	BOG	C1-O5-C5	6.17	125.87	113.71

There are no chirality outliers.

There are no torsion outliers.

There are no ring outliers.

2 monomers are involved in 4 short contacts:

Mol	Chain	Res	Type	Clashes	Symm-Clashes
3	A	236	GOL	3	0
2	B	232	BOG	1	0

5.7 Other polymers [i](#)

There are no such residues in this entry.

5.8 Polymer linkage issues [i](#)

There are no chain breaks in this entry.

6 Fit of model and data

6.1 Protein, DNA and RNA chains

In the following table, the column labelled ‘#RSRZ > 2’ contains the number (and percentage) of RSRZ outliers, followed by percent RSRZ outliers for the chain as percentile scores relative to all X-ray entries and entries of similar resolution. The OWAB column contains the minimum, median, 95th percentile and maximum values of the occupancy-weighted average B-factor per residue. The column labelled ‘Q < 0.9’ lists the number of (and percentage) of residues with an average occupancy less than 0.9.

Mol	Chain	Analysed	<RSRZ>	#RSRZ>2	OWAB(Å ²)	Q<0.9
1	A	230/234 (98%)	-0.45	7 (3%) 50 53	24, 45, 71, 93	0
1	B	233/234 (99%)	-0.22	16 (6%) 17 17	28, 62, 91, 110	0
All	All	463/468 (98%)	-0.33	23 (4%) 29 31	24, 51, 88, 110	0

All (23) RSRZ outliers are listed below:

Mol	Chain	Res	Type	RSRZ
1	A	-1	SER	5.8
1	B	198	GLY	3.8
1	B	113	ALA	3.2
1	B	199	GLY	3.0
1	A	123	GLU	2.8
1	A	78	ALA	2.8
1	B	107	THR	2.7
1	B	-1	SER	2.7
1	B	108	GLY	2.7
1	B	123	GLU	2.7
1	B	82	VAL	2.6
1	B	124	HIS	2.6
1	A	79	LYS	2.6
1	A	71	TRP	2.5
1	B	206	TRP	2.5
1	B	104	SER	2.4
1	B	78	ALA	2.4
1	A	3	ARG	2.3
1	A	77	PRO	2.2
1	B	203	GLU	2.2
1	B	200	TRP	2.2
1	B	231	ASP	2.0
1	B	31	GLU	2.0

6.2 Non-standard residues in protein, DNA, RNA chains [i](#)

There are no non-standard protein/DNA/RNA residues in this entry.

6.3 Carbohydrates [i](#)

There are no carbohydrates in this entry.

6.4 Ligands [i](#)

In the following table, the Atoms column lists the number of modelled atoms in the group and the number defined in the chemical component dictionary. The B-factors column lists the minimum, median, 95th percentile and maximum values of B factors of atoms in the group. The column labelled 'Q< 0.9' lists the number of atoms with occupancy less than 0.9.

Mol	Type	Chain	Res	Atoms	RSCC	RSR	B-factors(Å ²)	Q<0.9
2	BOG	B	232	20/20	0.75	0.36	94,100,102,102	0
3	GOL	A	235	6/6	0.77	0.23	81,85,86,86	0
2	BOG	A	234	20/20	0.78	0.25	75,87,93,96	0
2	BOG	A	232	20/20	0.84	0.28	72,74,82,83	0
2	BOG	A	233	20/20	0.84	0.26	62,65,78,79	0
3	GOL	B	233	6/6	0.85	0.17	86,87,88,88	0
3	GOL	A	236	6/6	0.98	0.12	45,47,49,52	0

6.5 Other polymers [i](#)

There are no such residues in this entry.