



Full wwPDB X-ray Structure Validation Report ⓘ

Mar 9, 2018 – 04:10 pm GMT

PDB ID : 5NNJ
Title : Dimer structure of Sortilin ectodomain crystal form 3, 4.0 Angstrom
Authors : Leloup, N.O.L.; Janssen, B.J.C.
Deposited on : 2017-04-09
Resolution : 4.00 Å(reported)

This is a Full wwPDB X-ray Structure Validation Report for a publicly released PDB entry.

We welcome your comments at validation@mail.wwpdb.org

A user guide is available at

<https://www.wwpdb.org/validation/2017/XrayValidationReportHelp>

with specific help available everywhere you see the ⓘ symbol.

The following versions of software and data (see [references ⓘ](#)) were used in the production of this report:

MolProbity : 4.02b-467
Mogul : 1.7.3 (157068), CSD as539be (2018)
Xtrriage (Phenix) : 1.13
EDS : trunk30967
Percentile statistics : 20171227.v01 (using entries in the PDB archive December 27th 2017)
Refmac : 5.8.0158
CCP4 : 7.0 (Gargrove)
Ideal geometry (proteins) : Engh & Huber (2001)
Ideal geometry (DNA, RNA) : Parkinson et al. (1996)
Validation Pipeline (wwPDB-VP) : trunk30967

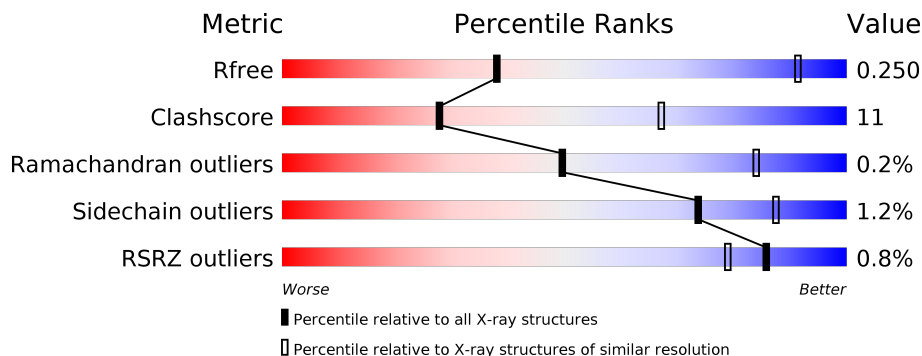
1 Overall quality at a glance

The following experimental techniques were used to determine the structure:

X-RAY DIFFRACTION

The reported resolution of this entry is 4.00 Å.

Percentile scores (ranging between 0-100) for global validation metrics of the entry are shown in the following graphic. The table shows the number of entries on which the scores are based.



Metric	Whole archive (#Entries)	Similar resolution (#Entries, resolution range(Å))
R_{free}	111664	1008 (4.38-3.62)
Clashscore	122126	1012 (4.34-3.66)
Ramachandran outliers	120053	1000 (4.36-3.64)
Sidechain outliers	120020	1023 (4.38-3.62)
RSRZ outliers	108989	1107 (4.40-3.60)

The table below summarises the geometric issues observed across the polymeric chains and their fit to the electron density. The red, orange, yellow and green segments on the lower bar indicate the fraction of residues that contain outliers for ≥ 3 , 2, 1 and 0 types of geometric quality criteria. A grey segment represents the fraction of residues that are not modelled. The numeric value for each fraction is indicated below the corresponding segment, with a dot representing fractions $\leq 5\%$. The upper red bar (where present) indicates the fraction of residues that have poor fit to the electron density. The numeric value is given above the bar.

Mol	Chain	Length	Quality of chain
1	A	732	 64% 24% 11%
1	B	732	 65% 23% 11%
1	C	732	 68% 20% 12%
1	D	732	 65% 23% 11%

The following table lists non-polymeric compounds, carbohydrate monomers and non-standard residues in protein, DNA, RNA chains that are outliers for geometric or electron-density-fit crite-

ria:

Mol	Type	Chain	Res	Chirality	Geometry	Clashes	Electron density
3	BMA	B	803	-	-	-	X
3	BMA	D	803	-	-	-	X

2 Entry composition i

There are 3 unique types of molecules in this entry. The entry contains 20730 atoms, of which 0 are hydrogens and 0 are deuteriums.

In the tables below, the ZeroOcc column contains the number of atoms modelled with zero occupancy, the AltConf column contains the number of residues with at least one atom in alternate conformation and the Trace column contains the number of residues modelled with at most 2 atoms.

- Molecule 1 is a protein called Sortilin.

Mol	Chain	Residues	Atoms					ZeroOcc	AltConf	Trace
			Total	C	N	O	S			
1	A	648	5094	3220	855	990	29	0	0	0
1	B	648	5094	3220	855	990	29	0	0	0
1	D	648	5094	3220	855	990	29	0	0	0
1	C	646	5080	3213	853	986	28	0	0	0

There are 36 discrepancies between the modelled and reference sequences:

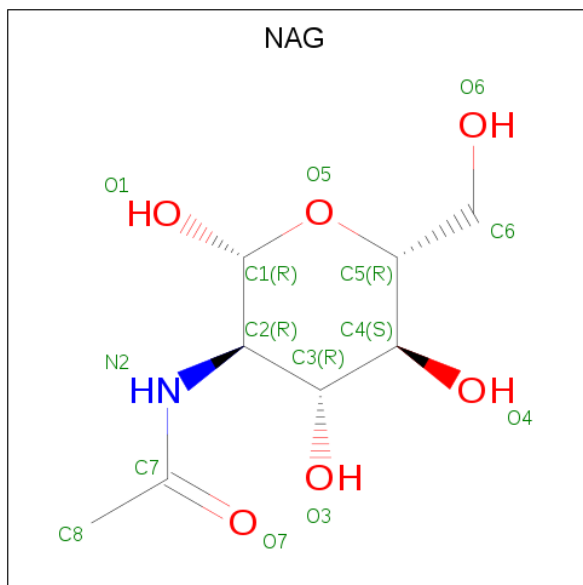
Chain	Residue	Modelled	Actual	Comment	Reference
A	723	ALA	-	expression tag	UNP Q6PHU5
A	724	ALA	-	expression tag	UNP Q6PHU5
A	725	ALA	-	expression tag	UNP Q6PHU5
A	726	HIS	-	expression tag	UNP Q6PHU5
A	727	HIS	-	expression tag	UNP Q6PHU5
A	728	HIS	-	expression tag	UNP Q6PHU5
A	729	HIS	-	expression tag	UNP Q6PHU5
A	730	HIS	-	expression tag	UNP Q6PHU5
A	731	HIS	-	expression tag	UNP Q6PHU5
B	723	ALA	-	expression tag	UNP Q6PHU5
B	724	ALA	-	expression tag	UNP Q6PHU5
B	725	ALA	-	expression tag	UNP Q6PHU5
B	726	HIS	-	expression tag	UNP Q6PHU5
B	727	HIS	-	expression tag	UNP Q6PHU5
B	728	HIS	-	expression tag	UNP Q6PHU5
B	729	HIS	-	expression tag	UNP Q6PHU5
B	730	HIS	-	expression tag	UNP Q6PHU5
B	731	HIS	-	expression tag	UNP Q6PHU5
D	723	ALA	-	expression tag	UNP Q6PHU5
D	724	ALA	-	expression tag	UNP Q6PHU5
D	725	ALA	-	expression tag	UNP Q6PHU5

Continued on next page...

Continued from previous page...

Chain	Residue	Modelled	Actual	Comment	Reference
D	726	HIS	-	expression tag	UNP Q6PHU5
D	727	HIS	-	expression tag	UNP Q6PHU5
D	728	HIS	-	expression tag	UNP Q6PHU5
D	729	HIS	-	expression tag	UNP Q6PHU5
D	730	HIS	-	expression tag	UNP Q6PHU5
D	731	HIS	-	expression tag	UNP Q6PHU5
C	723	ALA	-	expression tag	UNP Q6PHU5
C	724	ALA	-	expression tag	UNP Q6PHU5
C	725	ALA	-	expression tag	UNP Q6PHU5
C	726	HIS	-	expression tag	UNP Q6PHU5
C	727	HIS	-	expression tag	UNP Q6PHU5
C	728	HIS	-	expression tag	UNP Q6PHU5
C	729	HIS	-	expression tag	UNP Q6PHU5
C	730	HIS	-	expression tag	UNP Q6PHU5
C	731	HIS	-	expression tag	UNP Q6PHU5

- Molecule 2 is N-ACETYL-D-GLUCOSAMINE (three-letter code: NAG) (formula: C₈H₁₅NO₆).



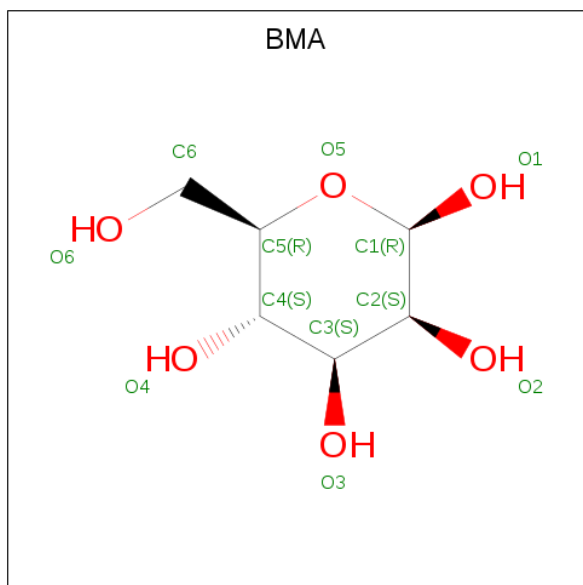
Mol	Chain	Residues	Atoms				ZeroOcc	AltConf
			Total	C	N	O		
2	A	1	Total	C	N	O	0	0
			14	8	1	5		
2	A	1	Total	C	N	O	0	0
			14	8	1	5		
2	A	1	Total	C	N	O	0	0
			14	8	1	5		

Continued on next page...

Continued from previous page...

Mol	Chain	Residues	Atoms				ZeroOcc	AltConf
			Total	C	N	O		
2	A	1	Total 14	C 8	N 1	O 5	0	0
2	B	1	Total 14	C 8	N 1	O 5	0	0
2	B	1	Total 14	C 8	N 1	O 5	0	0
2	B	1	Total 14	C 8	N 1	O 5	0	0
2	B	1	Total 14	C 8	N 1	O 5	0	0
2	B	1	Total 14	C 8	N 1	O 5	0	0
2	D	1	Total 14	C 8	N 1	O 5	0	0
2	D	1	Total 14	C 8	N 1	O 5	0	0
2	D	1	Total 14	C 8	N 1	O 5	0	0
2	D	1	Total 14	C 8	N 1	O 5	0	0
2	D	1	Total 14	C 8	N 1	O 5	0	0
2	C	1	Total 14	C 8	N 1	O 5	0	0
2	C	1	Total 14	C 8	N 1	O 5	0	0
2	C	1	Total 14	C 8	N 1	O 5	0	0
2	C	1	Total 14	C 8	N 1	O 5	0	0
2	C	1	Total 14	C 8	N 1	O 5	0	0

- Molecule 3 is BETA-D-MANNOSE (three-letter code: BMA) (formula: C₆H₁₂O₆).

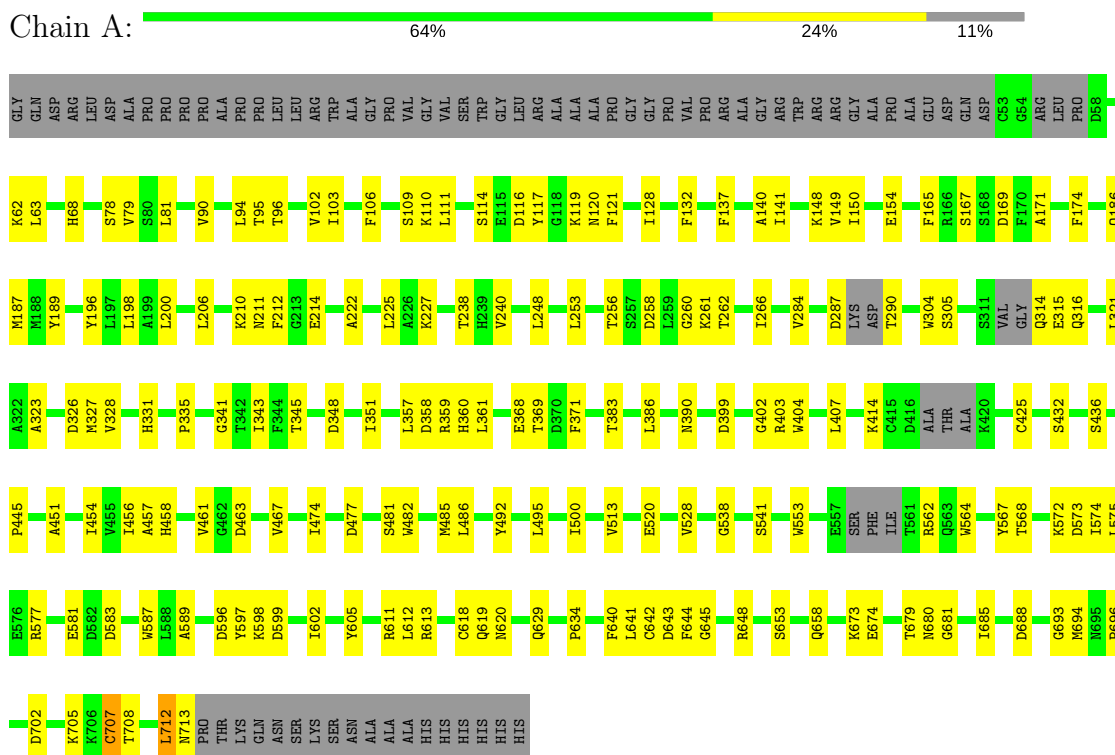


Mol	Chain	Residues	Atoms	ZeroOcc	AltConf
3	A	1	Total C O 11 6 5	0	0
3	A	1	Total C O 11 6 5	0	0
3	B	1	Total C O 11 6 5	0	0
3	B	1	Total C O 11 6 5	0	0
3	D	1	Total C O 11 6 5	0	0
3	D	1	Total C O 11 6 5	0	0
3	C	1	Total C O 11 6 5	0	0
3	C	1	Total C O 11 6 5	0	0

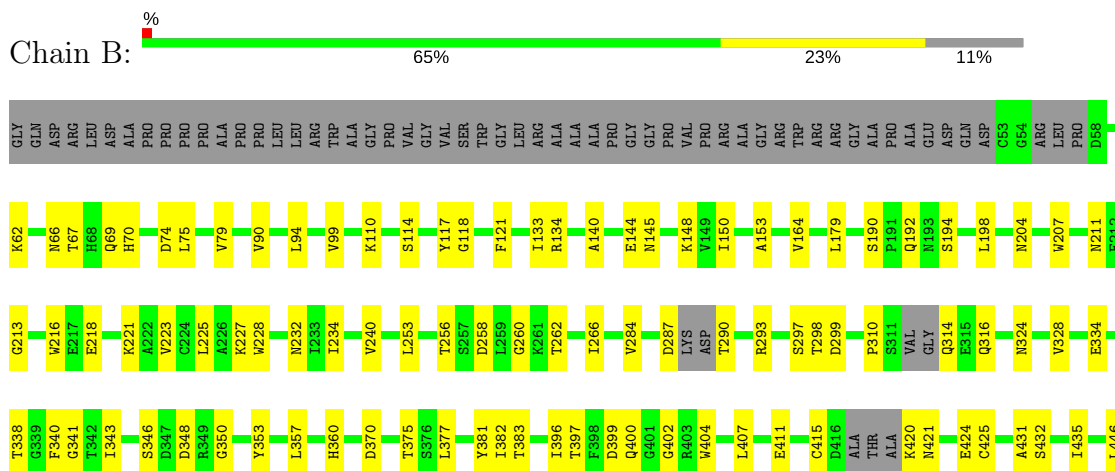
3 Residue-property plots

These plots are drawn for all protein, RNA and DNA chains in the entry. The first graphic for a chain summarises the proportions of the various outlier classes displayed in the second graphic. The second graphic shows the sequence view annotated by issues in geometry and electron density. Residues are color-coded according to the number of geometric quality criteria for which they contain at least one outlier: green = 0, yellow = 1, orange = 2 and red = 3 or more. A red dot above a residue indicates a poor fit to the electron density ($RSRZ > 2$). Stretches of 2 or more consecutive residues without any outlier are shown as a green connector. Residues present in the sample, but not in the model, are shown in grey.

- Molecule 1: Sortilin



- Molecule 1: Sortilin



4 Data and refinement statistics i

Property	Value	Source
Space group	P 21 21 21	Depositor
Cell constants a, b, c, α , β , γ	150.32Å 151.82Å 162.74Å 90.00° 90.00° 90.00°	Depositor
Resolution (Å)	71.72 – 4.00 71.72 – 4.00	Depositor EDS
% Data completeness (in resolution range)	99.8 (71.72-4.00) 99.8 (71.72-4.00)	Depositor EDS
R_{merge}	0.04	Depositor
R_{sym}	(Not available)	Depositor
$\langle I/\sigma(I) \rangle$ ¹	1.89 (at 4.01Å)	Xtrriage
Refinement program	PHENIX (1.11_2567: ???)	Depositor
R, R_{free}	0.186 , 0.250 0.186 , 0.250	Depositor DCC
R_{free} test set	1433 reflections (4.47%)	wwPDB-VP
Wilson B-factor (Å ²)	155.7	Xtrriage
Anisotropy	0.477	Xtrriage
Bulk solvent k_{sol} (e/Å ³), B_{sol} (Å ²)	0.29 , 139.1	EDS
L-test for twinning ²	$\langle L \rangle = 0.45$, $\langle L^2 \rangle = 0.28$	Xtrriage
Estimated twinning fraction	0.029 for k,h,-l	Xtrriage
F_o, F_c correlation	0.94	EDS
Total number of atoms	20730	wwPDB-VP
Average B, all atoms (Å ²)	202.0	wwPDB-VP

Xtrriage's analysis on translational NCS is as follows: *The largest off-origin peak in the Patterson function is 3.50% of the height of the origin peak. No significant pseudotranslation is detected.*

¹Intensities estimated from amplitudes.

²Theoretical values of $\langle |L| \rangle$, $\langle L^2 \rangle$ for acentric reflections are 0.5, 0.333 respectively for untwinned datasets, and 0.375, 0.2 for perfectly twinned datasets.

5 Model quality [i](#)

5.1 Standard geometry [i](#)

Bond lengths and bond angles in the following residue types are not validated in this section: BMA, NAG

The Z score for a bond length (or angle) is the number of standard deviations the observed value is removed from the expected value. A bond length (or angle) with $|Z| > 5$ is considered an outlier worth inspection. RMSZ is the root-mean-square of all Z scores of the bond lengths (or angles).

Mol	Chain	Bond lengths		Bond angles	
		RMSZ	# $ Z > 5$	RMSZ	# $ Z > 5$
1	A	0.50	0/5212	0.66	0/7055
1	B	0.47	0/5212	0.63	0/7055
1	C	0.47	1/5198 (0.0%)	0.61	0/7036
1	D	0.47	1/5212 (0.0%)	0.60	0/7055
All	All	0.48	2/20834 (0.0%)	0.63	0/28201

All (2) bond length outliers are listed below:

Mol	Chain	Res	Type	Atoms	Z	Observed(Å)	Ideal(Å)
1	D	712	LEU	C-N	11.16	1.59	1.34
1	C	561	THR	C-N	8.39	1.53	1.34

There are no bond angle outliers.

There are no chirality outliers.

There are no planarity outliers.

5.2 Too-close contacts [i](#)

In the following table, the Non-H and H(model) columns list the number of non-hydrogen atoms and hydrogen atoms in the chain respectively. The H(added) column lists the number of hydrogen atoms added and optimized by MolProbity. The Clashes column lists the number of clashes within the asymmetric unit, whereas Symm-Clashes lists symmetry related clashes.

Mol	Chain	Non-H	H(model)	H(added)	Clashes	Symm-Clashes
1	A	5094	0	4871	123	3
1	B	5094	0	4871	115	0
1	C	5080	0	4864	89	2
1	D	5094	0	4871	107	0
2	A	70	0	61	6	0

Continued on next page...

Continued from previous page...

Mol	Chain	Non-H	H(model)	H(added)	Clashes	Symm-Clashes
2	B	70	0	61	10	0
2	C	70	0	60	5	1
2	D	70	0	61	8	0
3	A	22	0	20	0	0
3	B	22	0	20	0	0
3	C	22	0	20	0	0
3	D	22	0	20	0	0
All	All	20730	0	19800	434	3

The all-atom clashscore is defined as the number of clashes found per 1000 atoms (including hydrogen atoms). The all-atom clashscore for this structure is 11.

All (434) close contacts within the same asymmetric unit are listed below, sorted by their clash magnitude.

Atom-1	Atom-2	Interatomic distance (Å)	Clash overlap (Å)
1:D:651:ASN:ND2	2:D:807:NAG:C1	1.70	1.50
1:B:298:THR:OG1	1:D:629:GLN:NE2	1.90	1.04
1:D:570:ASP:HB2	2:D:804:NAG:H82	1.47	0.96
2:B:804:NAG:H62	2:B:805:NAG:HN2	1.35	0.90
1:B:298:THR:HG1	1:D:629:GLN:NE2	1.71	0.89
1:C:472:VAL:HB	1:C:486:LEU:HB2	1.54	0.88
1:D:570:ASP:HB2	2:D:804:NAG:C8	2.06	0.85
1:A:513:VAL:HG22	1:A:528:VAL:HG22	1.60	0.84
1:B:375:THR:HA	2:B:801:NAG:O6	1.79	0.83
1:D:192:GLN:HB3	1:D:232:ASN:OD1	1.81	0.79
1:B:598:LYS:NZ	1:B:634:PRO:O	2.18	0.76
1:D:651:ASN:CG	2:D:807:NAG:C1	2.54	0.75
1:C:325:GLU:HG2	2:C:802:NAG:H81	1.69	0.75
1:A:598:LYS:NZ	1:A:634:PRO:O	2.18	0.74
1:D:598:LYS:NZ	1:D:634:PRO:O	2.18	0.74
1:C:598:LYS:NZ	1:C:634:PRO:O	2.18	0.74
1:A:225:LEU:HD21	1:A:227:LYS:HE3	1.69	0.74
1:A:707:CYS:SG	1:A:708:THR:N	2.62	0.73
2:B:804:NAG:H62	2:B:805:NAG:N2	2.04	0.72
1:B:707:CYS:SG	1:B:708:THR:N	2.62	0.72
1:A:572:LYS:NZ	2:A:805:NAG:H81	2.05	0.72
1:C:287:ASP:HB2	1:C:290:THR:HG22	1.70	0.72
1:D:148:LYS:HD2	1:D:212:PHE:CE1	2.25	0.72
1:D:707:CYS:SG	1:D:708:THR:N	2.62	0.71
1:C:707:CYS:SG	1:C:708:THR:N	2.62	0.71
1:C:324:ASN:HB2	2:C:802:NAG:H82	1.71	0.71

Continued on next page...

Continued from previous page...

Atom-1	Atom-2	Interatomic distance (Å)	Clash overlap (Å)
1:D:210:LYS:HE2	1:D:217:GLU:OE1	1.90	0.71
1:B:504:ILE:HD12	1:B:539:LEU:HD22	1.73	0.71
1:D:184:LEU:HD23	1:D:200:LEU:HD23	1.73	0.71
1:D:287:ASP:HB2	1:D:290:THR:HG22	1.72	0.70
1:C:310:PRO:HD3	1:C:644:PHE:CE1	2.26	0.70
1:C:127:LEU:HD21	1:C:174:PHE:HB2	1.74	0.70
1:C:225:LEU:HD21	1:C:227:LYS:HE3	1.72	0.70
1:A:321:LEU:HD11	1:A:331:HIS:HB2	1.74	0.70
1:D:451:ALA:HB1	1:D:454:ILE:HD12	1.74	0.69
1:A:425:CYS:HA	1:A:461:VAL:HG13	1.75	0.68
1:D:651:ASN:ND2	2:D:807:NAG:C2	2.55	0.68
1:D:66:ASN:HB3	1:D:570:ASP:HB3	1.77	0.67
1:C:712:LEU:HD12	1:C:712:LEU:O	1.96	0.66
1:A:304:TRP:CG	1:A:712:LEU:HD11	2.31	0.66
1:B:287:ASP:HB2	1:B:290:THR:HA	1.78	0.66
1:B:456:ILE:HD12	1:B:474:ILE:HD11	1.77	0.65
1:A:316:GLN:HE21	1:A:335:PRO:HD3	1.63	0.64
1:A:327:MET:HE3	1:A:345:THR:HB	1.81	0.63
1:B:324:ASN:HD22	2:B:801:NAG:H81	1.63	0.63
1:B:297:SER:OG	1:B:299:ASP:OD1	2.18	0.62
1:C:192:GLN:HB3	1:C:232:ASN:OD1	1.99	0.62
1:D:258:ASP:OD2	1:D:262:THR:OG1	2.12	0.62
1:D:324:ASN:HB3	2:D:801:NAG:O7	2.00	0.62
1:A:148:LYS:HB3	1:A:212:PHE:CE1	2.35	0.62
1:B:570:ASP:OD2	2:B:804:NAG:O6	2.17	0.61
1:C:287:ASP:HB2	1:C:290:THR:HA	1.82	0.61
1:D:345:THR:O	1:D:353:TYR:HA	2.00	0.61
1:D:297:SER:OG	1:D:299:ASP:OD1	2.19	0.61
1:A:258:ASP:OD2	1:A:262:THR:OG1	2.15	0.61
1:A:287:ASP:HB2	1:A:290:THR:HG22	1.81	0.60
1:B:407:LEU:HD11	1:B:482:TRP:HE1	1.67	0.60
1:D:369:THR:O	1:D:432:SER:HB2	2.01	0.60
1:D:402:GLY:O	1:D:648:ARG:NH1	2.35	0.60
1:C:361:LEU:HD21	1:C:386:LEU:HB2	1.84	0.59
1:D:62:LYS:O	1:D:66:ASN:ND2	2.35	0.59
1:A:137:PHE:O	1:A:186:GLN:NE2	2.32	0.59
1:D:674:GLU:HG3	1:D:705:LYS:HB2	1.85	0.59
1:B:671:TYR:CD2	1:D:628:LYS:HE2	2.38	0.59
1:B:287:ASP:HB2	1:B:290:THR:HG22	1.83	0.59
1:A:674:GLU:HG3	1:A:705:LYS:HB2	1.85	0.59
1:C:256:THR:HG21	1:C:260:GLY:N	2.17	0.59

Continued on next page...

Continued from previous page...

Atom-1	Atom-2	Interatomic distance (Å)	Clash overlap (Å)
1:C:310:PRO:HD3	1:C:644:PHE:HE1	1.67	0.58
1:C:674:GLU:HG3	1:C:705:LYS:HB2	1.85	0.58
1:A:694:MET:HG2	1:A:696:PRO:HD3	1.86	0.58
1:A:359:ARG:NE	1:A:386:LEU:O	2.33	0.58
1:B:674:GLU:HG3	1:B:705:LYS:HB2	1.85	0.58
1:B:425:CYS:HA	1:B:461:VAL:HG13	1.84	0.58
1:C:66:ASN:HB3	1:C:570:ASP:HB3	1.86	0.58
1:A:495:LEU:HD23	1:A:541:SER:OG	2.04	0.58
1:C:694:MET:HG2	1:C:696:PRO:HD3	1.86	0.58
2:A:801:NAG:O6	2:A:802:NAG:O5	2.19	0.58
1:B:324:ASN:ND2	2:B:801:NAG:H81	2.19	0.58
1:A:477:ASP:OD2	1:A:481:SER:OG	2.09	0.58
1:A:117:TYR:O	1:A:568:THR:HG21	2.04	0.57
1:A:256:THR:HG21	1:A:260:GLY:N	2.19	0.57
2:B:801:NAG:H83	2:B:801:NAG:H3	1.87	0.57
1:B:117:TYR:O	1:B:568:THR:HG21	2.04	0.57
1:D:274:GLY:O	1:D:280:LEU:HD12	2.04	0.57
1:D:519:ASP:OD2	1:D:522:GLN:HB2	2.04	0.57
1:A:538:GLY:HA3	1:A:553:TRP:CZ2	2.39	0.57
1:D:694:MET:HG2	1:D:696:PRO:HD3	1.86	0.57
1:B:99:VAL:O	1:B:134:ARG:NH1	2.37	0.57
1:A:572:LYS:HZ2	2:A:805:NAG:H81	1.69	0.57
1:B:383:THR:HG22	1:B:404:TRP:CZ3	2.39	0.57
1:C:545:ALA:O	1:C:546:ARG:HD3	2.05	0.57
1:C:305:SER:HB3	1:C:351:ILE:HD12	1.86	0.56
1:B:225:LEU:HD21	1:B:227:LYS:HE3	1.87	0.56
1:B:673:LYS:HD3	1:B:702:ASP:OD2	2.06	0.56
1:B:694:MET:HG2	1:B:696:PRO:HD3	1.86	0.56
1:A:673:LYS:HD3	1:A:702:ASP:OD2	2.06	0.56
1:C:673:LYS:HD3	1:C:702:ASP:OD2	2.06	0.56
1:C:222:ALA:O	1:C:238:THR:HA	2.06	0.56
1:D:211:ASN:ND2	1:D:214:GLU:HB3	2.21	0.56
1:D:106:PHE:CE1	1:D:157:GLY:HA2	2.41	0.56
1:D:123:ASP:OD1	1:D:125:THR:OG1	2.17	0.55
1:D:593:ASP:OD2	1:D:636:SER:OG	2.17	0.55
1:D:673:LYS:HD3	1:D:702:ASP:OD2	2.06	0.55
1:B:334:GLU:HG3	1:B:340:PHE:CE1	2.42	0.55
1:A:114:SER:HB2	1:A:121:PHE:CD2	2.41	0.55
1:A:287:ASP:HB2	1:A:290:THR:HA	1.88	0.55
1:B:314:GLN:O	1:B:316:GLN:HG3	2.06	0.55
1:B:399:ASP:OD1	1:B:399:ASP:N	2.39	0.55

Continued on next page...

Continued from previous page...

Atom-1	Atom-2	Interatomic distance (Å)	Clash overlap (Å)
1:C:211:ASN:ND2	1:C:214:GLU:HB3	2.22	0.55
1:A:150:ILE:HG21	1:A:187:MET:HG3	1.88	0.55
1:B:685:ILE:HB	1:B:688:ASP:HB2	1.89	0.55
1:D:343:ILE:HD11	1:D:360:HIS:CE1	2.42	0.55
1:C:131:THR:HG21	1:C:163:ARG:HD2	1.90	0.54
1:C:461:VAL:HG12	1:C:462:GLY:H	1.71	0.54
1:B:90:VAL:HA	1:B:114:SER:O	2.07	0.54
1:C:685:ILE:HB	1:C:688:ASP:HB2	1.89	0.54
1:A:500:ILE:HD11	1:A:575:LEU:HD12	1.90	0.54
1:B:357:LEU:HD22	1:B:404:TRP:CD2	2.41	0.54
1:C:95:THR:HB	1:C:110:LYS:H	1.71	0.54
1:D:133:ILE:HD13	1:D:153:ALA:HB2	1.89	0.54
1:B:451:ALA:HB1	1:B:454:ILE:HD12	1.89	0.54
1:C:210:LYS:HE2	1:C:217:GLU:OE1	2.08	0.54
1:A:368:GLU:N	1:A:368:GLU:OE1	2.40	0.54
1:A:685:ILE:HB	1:A:688:ASP:HB2	1.89	0.54
1:A:679:THR:OG1	1:A:681:GLY:N	2.37	0.54
1:D:255:ARG:HB2	1:D:266:ILE:HD13	1.90	0.54
1:D:685:ILE:HB	1:D:688:ASP:HB2	1.89	0.54
1:D:81:LEU:HB3	1:D:553:TRP:CZ3	2.43	0.53
1:D:650:GLU:OE2	2:D:807:NAG:N2	2.42	0.53
1:B:593:ASP:OD2	1:B:636:SER:OG	2.17	0.53
1:B:256:THR:HG21	1:B:260:GLY:N	2.24	0.53
1:B:402:GLY:HA2	1:B:641:LEU:HD23	1.89	0.53
1:D:402:GLY:HA2	1:D:641:LEU:HD23	1.90	0.53
1:A:369:THR:O	1:A:432:SER:HB2	2.09	0.52
1:B:538:GLY:HA3	1:B:553:TRP:CZ2	2.43	0.52
1:A:458:HIS:CE1	1:A:492:TYR:HE2	2.27	0.52
1:A:572:LYS:HZ3	2:A:805:NAG:H81	1.74	0.52
1:A:102:VAL:HG23	1:A:103:ILE:HD12	1.92	0.52
1:B:679:THR:OG1	1:B:681:GLY:N	2.37	0.52
1:D:284:VAL:HG21	1:D:712:LEU:HD23	1.90	0.52
1:C:357:LEU:HD12	1:C:358:ASP:N	2.25	0.52
1:B:69:GLN:HG2	1:B:70:HIS:N	2.24	0.52
1:A:62:LYS:HD2	1:A:573:ASP:HB3	1.92	0.52
1:A:68:HIS:O	1:A:567:TYR:HA	2.09	0.52
1:C:679:THR:OG1	1:C:681:GLY:N	2.37	0.52
1:C:324:ASN:HB3	2:C:801:NAG:C7	2.39	0.52
1:A:78:SER:HB2	1:A:96:THR:OG1	2.10	0.52
1:D:74:ASP:O	1:D:75:LEU:HD23	2.09	0.52
1:A:451:ALA:HB1	1:A:454:ILE:HD12	1.92	0.51

Continued on next page...

Continued from previous page...

Atom-1	Atom-2	Interatomic distance (Å)	Clash overlap (Å)
1:D:62:LYS:HD2	1:D:573:ASP:HB3	1.92	0.51
1:C:62:LYS:O	1:C:66:ASN:ND2	2.43	0.51
1:B:293:ARG:NH2	1:B:314:GLN:HA	2.24	0.51
1:A:343:ILE:HD11	1:A:360:HIS:CE1	2.45	0.51
1:B:324:ASN:HB3	2:B:801:NAG:O7	2.10	0.51
1:B:504:ILE:HG12	1:B:514:ILE:HD13	1.92	0.51
1:A:148:LYS:HD2	1:A:212:PHE:CE1	2.46	0.51
1:A:68:HIS:CD2	2:A:804:NAG:H81	2.45	0.51
1:A:106:PHE:HE2	1:B:421:ASN:HD22	1.59	0.51
1:D:196:TYR:O	1:D:197:LEU:HD23	2.11	0.51
1:B:421:ASN:HB3	1:B:424:GLU:HB2	1.92	0.50
1:B:499:GLY:O	1:B:518:THR:HA	2.11	0.50
1:C:83:TRP:CH2	1:C:91:ILE:HD11	2.46	0.50
1:D:679:THR:OG1	1:D:681:GLY:N	2.37	0.50
1:C:519:ASP:HB3	1:C:616:SER:H	1.76	0.50
1:C:224:CYS:HB2	1:C:237:THR:OG1	2.11	0.50
1:A:304:TRP:CB	1:A:712:LEU:HD11	2.42	0.50
1:A:458:HIS:CE1	1:A:492:TYR:CE2	3.00	0.50
1:B:491:TYR:O	1:B:503:ALA:HA	2.12	0.50
1:D:127:LEU:HD21	1:D:174:PHE:HB2	1.94	0.49
1:D:583:ASP:O	1:D:613:ARG:HG3	2.12	0.49
1:C:284:VAL:HG21	1:C:712:LEU:HD23	1.93	0.49
1:A:148:LYS:HB3	1:A:212:PHE:HE1	1.78	0.49
1:B:148:LYS:HE3	1:B:194:SER:OG	2.12	0.49
1:A:314:GLN:O	1:A:316:GLN:HG3	2.12	0.49
1:C:645:GLY:O	1:C:658:GLN:HG3	2.13	0.49
1:D:425:CYS:HA	1:D:461:VAL:HG13	1.94	0.49
1:A:645:GLY:O	1:A:658:GLN:HG3	2.13	0.49
1:D:83:TRP:CZ2	1:D:91:ILE:HD11	2.47	0.49
1:B:334:GLU:HG2	1:B:341:GLY:HA2	1.93	0.49
1:D:131:THR:HG21	1:D:163:ARG:HD2	1.94	0.49
1:D:645:GLY:O	1:D:658:GLN:HG3	2.12	0.49
1:A:425:CYS:HA	1:A:461:VAL:CG1	2.43	0.49
1:A:583:ASP:O	1:A:613:ARG:HG3	2.12	0.49
1:C:593:ASP:OD2	1:C:636:SER:OG	2.17	0.49
1:A:114:SER:HB2	1:A:121:PHE:CE2	2.48	0.49
1:D:399:ASP:N	1:D:399:ASP:OD1	2.42	0.49
1:B:501:ILE:HD12	1:B:521:GLY:N	2.28	0.49
1:B:645:GLY:O	1:B:658:GLN:HG3	2.13	0.49
1:C:166:ARG:HD2	1:C:212:PHE:O	2.13	0.49
1:C:583:ASP:O	1:C:613:ARG:HG3	2.13	0.49

Continued on next page...

Continued from previous page...

Atom-1	Atom-2	Interatomic distance (Å)	Clash overlap (Å)
1:D:326:ASP:O	1:D:348:ASP:HA	2.12	0.49
1:B:118:GLY:HA3	1:B:568:THR:OG1	2.13	0.48
1:B:504:ILE:CD1	1:B:539:LEU:HD22	2.41	0.48
1:D:522:GLN:NE2	1:D:612:LEU:O	2.46	0.48
1:B:207:TRP:CH2	1:B:218:GLU:HB2	2.48	0.48
1:D:461:VAL:HG12	1:D:462:GLY:H	1.77	0.48
1:B:140:ALA:HB3	1:B:150:ILE:HB	1.94	0.48
1:B:583:ASP:O	1:B:613:ARG:HG3	2.12	0.48
1:D:314:GLN:O	1:D:316:GLN:HG3	2.13	0.48
1:A:456:ILE:HD12	1:A:474:ILE:HD11	1.95	0.48
1:C:495:LEU:HD12	1:C:500:ILE:HB	1.95	0.48
1:A:116:ASP:OD2	1:A:119:LYS:HB3	2.13	0.48
1:A:361:LEU:O	1:A:369:THR:HG22	2.13	0.48
1:C:577:ARG:NH2	1:C:618:CYS:HB3	2.29	0.48
1:D:305:SER:HB3	1:D:351:ILE:HD12	1.94	0.48
1:C:522:GLN:NE2	1:C:612:LEU:O	2.47	0.48
1:D:99:VAL:HG12	1:D:134:ARG:HH12	1.79	0.48
1:A:110:LYS:HE3	1:A:110:LYS:HB3	1.66	0.48
1:A:327:MET:CE	1:A:345:THR:HB	2.44	0.48
1:B:62:LYS:HD2	1:B:573:ASP:HB3	1.96	0.48
1:D:150:ILE:HG12	1:D:189:TYR:OH	2.14	0.48
1:B:411:GLU:OE1	1:B:411:GLU:N	2.41	0.47
1:B:79:VAL:HB	1:B:564:TRP:CZ3	2.49	0.47
1:D:256:THR:HG21	1:D:260:GLY:N	2.28	0.47
1:D:346:SER:HA	1:D:352:VAL:O	2.13	0.47
1:D:577:ARG:NH2	1:D:618:CYS:HB3	2.29	0.47
1:A:326:ASP:O	1:A:348:ASP:HA	2.14	0.47
1:A:402:GLY:HA2	1:A:641:LEU:HD23	1.97	0.47
1:A:304:TRP:CG	1:A:712:LEU:CD1	2.97	0.47
1:B:324:ASN:HB3	2:B:801:NAG:C7	2.44	0.47
1:C:520:GLU:HG3	1:C:612:LEU:HD12	1.96	0.47
1:A:577:ARG:NH2	1:A:618:CYS:HB3	2.29	0.47
1:C:324:ASN:HB3	2:C:801:NAG:O7	2.15	0.47
1:A:132:PHE:CE1	1:A:154:GLU:HB2	2.50	0.47
1:D:570:ASP:HB2	2:D:804:NAG:H81	1.93	0.47
1:D:589:ALA:CB	1:D:602:ILE:HD11	2.45	0.47
1:B:293:ARG:HH22	1:B:314:GLN:HA	1.80	0.47
1:C:146:SER:HB2	1:C:148:LYS:HG2	1.97	0.47
1:C:589:ALA:CB	1:C:602:ILE:HD11	2.45	0.47
1:A:341:GLY:N	1:A:360:HIS:O	2.41	0.46
1:C:407:LEU:HD11	1:C:482:TRP:HE1	1.80	0.46

Continued on next page...

Continued from previous page...

Atom-1	Atom-2	Interatomic distance (Å)	Clash overlap (Å)
1:C:480:TYR:CD1	1:C:590:HIS:CD2	3.03	0.46
1:C:70:HIS:CE1	1:C:121:PHE:HB2	2.50	0.46
1:B:67:THR:HG1	1:B:527:TYR:HH	1.59	0.46
1:D:352:VAL:HB	1:D:683:ARG:HH12	1.80	0.46
1:D:327:MET:HB3	1:D:686:PRO:HG2	1.96	0.46
1:D:284:VAL:CG2	1:D:712:LEU:HD23	2.45	0.46
1:A:109:SER:OG	1:A:132:PHE:HA	2.15	0.46
1:A:386:LEU:HD11	1:A:390:ASN:HA	1.97	0.46
1:A:643:ASP:OD1	1:A:644:PHE:N	2.45	0.46
1:B:589:ALA:CB	1:B:602:ILE:HD11	2.45	0.46
1:B:577:ARG:NH2	1:B:618:CYS:HB3	2.29	0.46
1:D:150:ILE:O	1:D:151:LEU:HD12	2.15	0.46
1:D:431:ALA:O	1:D:435:ILE:HG12	2.16	0.46
1:D:504:ILE:HD12	1:D:539:LEU:HD22	1.97	0.46
1:A:463:ASP:O	1:A:467:VAL:HG23	2.15	0.46
1:A:572:LYS:HZ3	2:A:805:NAG:C8	2.27	0.46
1:A:357:LEU:HD12	1:A:358:ASP:N	2.30	0.46
1:C:587:TRP:CD2	1:C:611:ARG:NH2	2.84	0.46
1:A:414:LYS:HB3	1:A:414:LYS:HE2	1.63	0.46
1:A:589:ALA:CB	1:A:602:ILE:HD11	2.45	0.46
1:B:587:TRP:CD2	1:B:611:ARG:NH2	2.84	0.46
1:B:79:VAL:HG21	1:B:564:TRP:CD2	2.51	0.46
1:D:415:CYS:HB3	1:D:425:CYS:HB3	1.89	0.46
1:C:117:TYR:O	1:C:568:THR:HG21	2.16	0.46
1:D:100:PRO:HB2	1:D:103:ILE:HD13	1.97	0.46
1:D:477:ASP:OD1	1:D:477:ASP:N	2.48	0.46
1:D:640:PHE:CZ	1:D:696:PRO:HD2	2.51	0.46
1:B:94:LEU:HD21	1:B:133:ILE:HG21	1.98	0.46
1:A:169:ASP:OD1	1:A:169:ASP:N	2.48	0.45
1:A:348:ASP:N	1:A:348:ASP:OD1	2.47	0.45
1:A:640:PHE:CZ	1:A:696:PRO:HD2	2.51	0.45
1:D:100:PRO:O	1:D:134:ARG:NH1	2.50	0.45
1:C:133:ILE:HD13	1:C:153:ALA:HB2	1.97	0.45
1:C:640:PHE:CZ	1:C:696:PRO:HD2	2.51	0.45
1:A:128:ILE:HG22	1:A:165:PHE:CE2	2.51	0.45
1:B:477:ASP:N	1:B:477:ASP:OD1	2.48	0.45
1:D:550:ILE:HD11	1:D:569:VAL:HB	1.98	0.45
1:D:89:GLY:HA2	1:D:117:TYR:CD1	2.52	0.45
1:A:211:ASN:ND2	1:A:214:GLU:HB3	2.31	0.45
1:B:446:LEU:HD12	1:B:447:SER:H	1.82	0.45
1:B:514:ILE:HA	1:B:514:ILE:HD13	1.85	0.45

Continued on next page...

Continued from previous page...

Atom-1	Atom-2	Interatomic distance (Å)	Clash overlap (Å)
1:D:255:ARG:NH2	1:D:264:LYS:HD3	2.31	0.45
1:D:587:TRP:CD2	1:D:611:ARG:NH2	2.84	0.45
1:A:111:LEU:HB2	1:A:128:ILE:HD11	1.97	0.45
1:A:357:LEU:HD22	1:A:404:TRP:CG	2.51	0.45
1:A:587:TRP:CD2	1:A:611:ARG:NH2	2.83	0.45
1:B:284:VAL:HG21	1:B:712:LEU:HD23	1.98	0.45
1:B:458:HIS:CE1	1:B:492:TYR:HE2	2.35	0.45
1:B:74:ASP:O	1:B:75:LEU:HD23	2.16	0.45
1:D:340:PHE:O	1:D:362:TYR:HE1	1.99	0.45
1:D:346:SER:HB3	1:D:353:TYR:CE2	2.52	0.45
1:D:378:ARG:HH22	1:D:605:TYR:HB2	1.81	0.45
1:A:119:LYS:HG3	1:A:120:ASN:ND2	2.32	0.45
1:A:407:LEU:HD11	1:A:482:TRP:HE1	1.80	0.45
1:B:192:GLN:HB3	1:B:232:ASN:OD1	2.17	0.45
1:B:640:PHE:CZ	1:B:696:PRO:HD2	2.51	0.45
1:C:345:THR:O	1:C:353:TYR:HA	2.16	0.45
1:B:164:VAL:CG1	1:B:179:LEU:HD11	2.46	0.45
1:B:643:ASP:OD1	1:B:644:PHE:N	2.45	0.45
1:B:110:LYS:HB3	1:B:110:LYS:HE3	1.51	0.45
1:B:461:VAL:HG12	1:B:462:GLY:H	1.81	0.45
1:C:480:TYR:CE1	1:C:590:HIS:CD2	3.05	0.45
1:D:243:SER:HB3	1:C:336:GLY:H	1.82	0.45
1:A:79:VAL:HG21	1:A:564:TRP:CD2	2.52	0.44
1:B:204:ASN:HB3	1:B:223:VAL:O	2.17	0.44
1:B:258:ASP:OD2	1:B:262:THR:OG1	2.30	0.44
1:D:114:SER:HB2	1:D:121:PHE:CD2	2.52	0.44
1:C:514:ILE:HG12	1:C:529:PHE:CD1	2.52	0.44
1:C:477:ASP:HA	1:C:587:TRP:CZ3	2.53	0.44
1:D:359:ARG:O	1:D:385:THR:HB	2.18	0.44
1:A:305:SER:HB3	1:A:351:ILE:HD12	2.00	0.44
1:A:323:ALA:CB	1:A:328:VAL:HG22	2.47	0.44
1:A:284:VAL:HG21	1:A:712:LEU:HD23	2.00	0.44
1:B:501:ILE:O	1:B:516:PHE:HA	2.18	0.44
1:B:520:GLU:OE1	1:B:611:ARG:HG3	2.18	0.44
1:A:141:ILE:HD13	1:A:149:VAL:HG13	1.99	0.44
1:B:190:SER:HB2	1:B:228:TRP:CZ2	2.52	0.44
1:B:415:CYS:O	1:B:420:LYS:NZ	2.25	0.44
1:C:314:GLN:O	1:C:316:GLN:HG3	2.17	0.44
1:C:79:VAL:HB	1:C:564:TRP:CZ3	2.53	0.44
1:A:256:THR:HG21	1:A:260:GLY:CA	2.47	0.44
1:B:596:ASP:HA	1:B:599:ASP:HB2	2.00	0.44

Continued on next page...

Continued from previous page...

Atom-1	Atom-2	Interatomic distance (Å)	Clash overlap (Å)
1:C:150:ILE:O	1:C:151:LEU:HD12	2.18	0.44
1:C:287:ASP:HB2	1:C:290:THR:CG2	2.45	0.44
1:D:596:ASP:HA	1:D:599:ASP:HB2	2.00	0.44
1:D:102:VAL:HG23	1:D:103:ILE:HD12	2.00	0.44
1:A:148:LYS:HD2	1:A:212:PHE:CD1	2.53	0.43
1:B:66:ASN:HB3	1:B:570:ASP:HB3	2.00	0.43
1:B:70:HIS:NE2	1:B:121:PHE:HB2	2.33	0.43
1:C:500:ILE:HD11	1:C:575:LEU:HD12	1.99	0.43
1:D:472:VAL:HB	1:D:486:LEU:HB2	2.00	0.43
1:B:144:GLU:HG3	1:B:145:ASN:OD1	2.18	0.43
1:A:399:ASP:N	1:A:399:ASP:OD1	2.52	0.43
1:A:63:LEU:HD21	1:A:574:ILE:HG13	2.01	0.43
1:B:346:SER:OG	1:B:350:GLY:HA2	2.18	0.43
1:B:382:ILE:HG12	1:B:396:ILE:HB	2.01	0.43
1:B:495:LEU:HD23	1:B:541:SER:OG	2.18	0.43
1:C:284:VAL:CG2	1:C:712:LEU:HD23	2.48	0.43
1:C:430:HIS:HB3	1:C:441:VAL:HG21	2.00	0.43
1:C:308:GLN:C	1:C:309:LEU:HD12	2.39	0.43
1:C:310:PRO:HD3	1:C:644:PHE:CD1	2.53	0.43
1:C:368:GLU:OE1	1:C:368:GLU:N	2.47	0.43
1:C:596:ASP:HA	1:C:599:ASP:HB2	2.00	0.43
1:A:198:LEU:HD13	1:A:206:LEU:HD11	2.00	0.43
1:B:348:ASP:OD1	1:B:348:ASP:N	2.51	0.43
1:C:310:PRO:CD	1:C:644:PHE:HE1	2.30	0.43
1:C:78:SER:HB2	1:C:96:THR:OG1	2.19	0.43
2:C:804:NAG:H62	2:C:805:NAG:HN2	1.83	0.43
1:D:387:SER:HB3	1:D:393:GLN:CD	2.39	0.43
1:D:499:GLY:O	1:D:518:THR:HA	2.18	0.43
1:A:403:ARG:NH1	1:A:653:SER:HB3	2.34	0.43
1:A:140:ALA:HB3	1:A:150:ILE:HB	2.01	0.43
1:A:414:LYS:H	1:A:414:LYS:HG2	1.55	0.43
1:A:95:THR:HB	1:A:110:LYS:H	1.84	0.43
1:A:261:LYS:HD3	1:A:261:LYS:HA	1.89	0.43
1:A:457:ALA:HA	1:A:492:TYR:OH	2.19	0.43
1:C:114:SER:HB2	1:C:121:PHE:CD2	2.54	0.43
1:A:68:HIS:ND1	1:A:119:LYS:HD3	2.34	0.42
1:A:200:LEU:HD12	1:A:200:LEU:HA	1.88	0.42
1:D:101:LEU:HD21	1:D:184:LEU:HA	2.01	0.42
1:A:562:ARG:HB3	1:A:562:ARG:HE	1.67	0.42
1:A:94:LEU:HD13	1:A:111:LEU:HD13	2.00	0.42
1:B:198:LEU:HA	1:B:207:TRP:O	2.19	0.42

Continued on next page...

Continued from previous page...

Atom-1	Atom-2	Interatomic distance (Å)	Clash overlap (Å)
1:B:253:LEU:O	1:B:266:ILE:HG12	2.19	0.42
1:B:287:ASP:O	1:B:290:THR:HG22	2.19	0.42
1:A:596:ASP:HA	1:A:599:ASP:HB2	2.00	0.42
1:C:328:VAL:N	1:C:346:SER:OG	2.52	0.42
1:D:116:ASP:N	1:D:116:ASP:OD1	2.49	0.42
1:A:371:PHE:HA	1:A:383:THR:HB	2.01	0.42
1:B:211:ASN:N	1:B:211:ASN:OD1	2.52	0.42
1:C:348:ASP:N	1:C:348:ASP:OD1	2.52	0.42
1:A:361:LEU:HD21	1:A:386:LEU:HB2	2.01	0.42
1:B:228:TRP:CH2	1:B:234:ILE:HD11	2.54	0.42
1:D:148:LYS:HD2	1:D:212:PHE:CD1	2.55	0.42
1:B:133:ILE:HD13	1:B:153:ALA:HB2	2.01	0.42
1:B:370:ASP:HA	1:B:431:ALA:HB3	2.02	0.42
1:C:619:GLN:NE2	1:C:620:ASN:O	2.53	0.42
1:A:368:GLU:HB2	1:A:436:SER:OG	2.20	0.42
1:A:619:GLN:NE2	1:A:620:ASN:O	2.53	0.42
1:D:368:GLU:N	1:D:368:GLU:OE1	2.46	0.42
1:A:90:VAL:HG11	1:A:171:ALA:HB3	2.00	0.42
1:A:196:TYR:CD1	1:A:210:LYS:HA	2.55	0.42
1:A:343:ILE:HD11	1:A:360:HIS:ND1	2.34	0.42
1:A:520:GLU:HG3	1:A:612:LEU:HD12	2.02	0.42
1:B:343:ILE:HD11	1:B:360:HIS:ND1	2.34	0.42
1:B:407:LEU:HD11	1:B:482:TRP:NE1	2.31	0.42
1:B:619:GLN:NE2	1:B:620:ASN:O	2.53	0.42
1:A:81:LEU:HB3	1:A:553:TRP:CZ3	2.55	0.42
1:B:642:CYS:SG	1:B:648:ARG:HG3	2.60	0.42
1:C:256:THR:HG21	1:C:260:GLY:H	1.83	0.42
1:A:642:CYS:SG	1:A:648:ARG:HG3	2.60	0.41
1:B:554:GLY:O	1:B:564:TRP:HA	2.20	0.41
1:D:70:HIS:CE1	1:D:121:PHE:HB2	2.55	0.41
1:D:619:GLN:NE2	1:D:620:ASN:O	2.53	0.41
1:A:248:LEU:HA	1:A:248:LEU:HD23	1.85	0.41
1:B:164:VAL:HG13	1:B:179:LEU:HD11	2.02	0.41
1:C:538:GLY:HA3	1:C:553:TRP:CZ2	2.56	0.41
1:A:445:PRO:HA	1:A:457:ALA:HB2	2.02	0.41
1:B:377:LEU:HA	1:B:377:LEU:HD12	1.72	0.41
1:B:549:ASN:OD1	2:B:804:NAG:O5	2.38	0.41
1:D:237:THR:HA	1:D:252:GLU:O	2.21	0.41
1:D:487:GLU:O	1:D:490:HIS:HE1	2.03	0.41
1:D:78:SER:HB2	1:D:96:THR:OG1	2.19	0.41
1:A:222:ALA:O	1:A:238:THR:HA	2.21	0.41

Continued on next page...

Continued from previous page...

Atom-1	Atom-2	Interatomic distance (Å)	Clash overlap (Å)
1:B:446:LEU:HD12	1:B:447:SER:N	2.36	0.41
1:C:605:TYR:HA	1:C:605:TYR:HD1	1.75	0.41
1:A:140:ALA:O	1:A:189:TYR:OH	2.32	0.41
1:B:431:ALA:O	1:B:435:ILE:HG12	2.20	0.41
1:C:397:THR:HG22	1:C:404:TRP:CZ3	2.55	0.41
1:B:425:CYS:HA	1:B:461:VAL:CG1	2.51	0.41
1:B:605:TYR:HA	1:B:605:TYR:HD1	1.75	0.41
1:D:642:CYS:SG	1:D:648:ARG:HG3	2.60	0.41
1:A:167:SER:HB2	1:A:174:PHE:CD2	2.55	0.41
1:A:167:SER:HB2	1:A:174:PHE:CE2	2.55	0.41
1:B:381:TYR:HE1	1:B:400:GLN:HG3	1.85	0.41
1:C:310:PRO:CD	1:C:644:PHE:CE1	3.01	0.41
1:A:253:LEU:HA	1:A:253:LEU:HD12	1.86	0.41
1:C:327:MET:HB3	1:C:686:PRO:HG2	2.03	0.41
1:C:68:HIS:CD2	1:C:119:LYS:HD3	2.56	0.41
1:A:256:THR:HG23	1:A:262:THR:O	2.21	0.41
1:A:485:MET:O	1:A:486:LEU:HD23	2.21	0.41
1:B:310:PRO:N	1:B:644:PHE:HE1	2.19	0.41
1:D:293:ARG:HH22	1:D:314:GLN:HA	1.86	0.41
1:A:253:LEU:O	1:A:266:ILE:HG12	2.21	0.40
1:C:184:LEU:HD23	1:C:200:LEU:HD23	2.03	0.40
1:C:340:PHE:HA	1:C:360:HIS:O	2.21	0.40
1:B:213:GLY:HA2	1:B:216:TRP:CZ2	2.56	0.40
1:B:221:LYS:HE2	1:B:221:LYS:HB3	1.72	0.40
1:C:143:PRO:HB2	1:C:146:SER:HB3	2.03	0.40
1:C:679:THR:OG1	1:C:680:ASN:N	2.54	0.40
1:D:480:TYR:CD1	1:D:590:HIS:CD2	3.08	0.40
1:D:679:THR:OG1	1:D:680:ASN:N	2.54	0.40
1:B:472:VAL:HB	1:B:486:LEU:HB2	2.04	0.40
1:C:642:CYS:SG	1:C:648:ARG:HG3	2.60	0.40
1:D:274:GLY:C	1:D:275:LEU:HD12	2.41	0.40
1:A:331:HIS:CE1	1:A:341:GLY:HA3	2.57	0.40
1:D:248:LEU:HB3	1:D:271:TYR:CE1	2.57	0.40
1:A:679:THR:OG1	1:A:680:ASN:N	2.54	0.40
1:B:328:VAL:HG11	1:B:353:TYR:OH	2.22	0.40
1:B:473:TYR:CE2	1:B:484:LYS:HB2	2.56	0.40
1:C:643:ASP:OD1	1:C:644:PHE:N	2.45	0.40
1:D:343:ILE:HD11	1:D:360:HIS:ND1	2.37	0.40
1:D:456:ILE:HD12	1:D:474:ILE:HD11	2.04	0.40

All (3) symmetry-related close contacts are listed below. The label for Atom-2 includes the symmetry operator and encoded unit-cell translations to be applied.

Atom-1	Atom-2	Interatomic distance (Å)	Clash overlap (Å)
1:A:629:GLN:NE2	2:C:802:NAG:O4[1_554]	1.84	0.36
1:A:581:GLU:OE2	1:C:298:THR:OG1[1_554]	2.12	0.08
1:A:693:GLY:CA	1:C:629:GLN:NE2[1_554]	2.14	0.06

5.3 Torsion angles [i](#)

5.3.1 Protein backbone [i](#)

In the following table, the Percentiles column shows the percent Ramachandran outliers of the chain as a percentile score with respect to all X-ray entries followed by that with respect to entries of similar resolution.

The Analysed column shows the number of residues for which the backbone conformation was analysed, and the total number of residues.

Mol	Chain	Analysed	Favoured	Allowed	Outliers	Percentiles	
1	A	636/732 (87%)	592 (93%)	42 (7%)	2 (0%)	43	80
1	B	636/732 (87%)	592 (93%)	43 (7%)	1 (0%)	49	84
1	C	634/732 (87%)	596 (94%)	37 (6%)	1 (0%)	49	84
1	D	636/732 (87%)	591 (93%)	44 (7%)	1 (0%)	49	84
All	All	2542/2928 (87%)	2371 (93%)	166 (6%)	5 (0%)	49	84

All (5) Ramachandran outliers are listed below:

Mol	Chain	Res	Type
1	A	315	GLU
1	C	240	VAL
1	B	240	VAL
1	D	240	VAL
1	A	240	VAL

5.3.2 Protein sidechains [i](#)

In the following table, the Percentiles column shows the percent sidechain outliers of the chain as a percentile score with respect to all X-ray entries followed by that with respect to entries of similar resolution.

The Analysed column shows the number of residues for which the sidechain conformation was analysed, and the total number of residues.

Mol	Chain	Analysed	Rotameric	Outliers	Percentiles	
1	A	565/626 (90%)	560 (99%)	5 (1%)	81	91
1	B	565/626 (90%)	557 (99%)	8 (1%)	69	85
1	C	563/626 (90%)	557 (99%)	6 (1%)	76	88
1	D	565/626 (90%)	558 (99%)	7 (1%)	74	87
All	All	2258/2504 (90%)	2232 (99%)	26 (1%)	74	87

All (26) residues with a non-rotameric sidechain are listed below:

Mol	Chain	Res	Type
1	A	597	TYR
1	A	605	TYR
1	A	707	CYS
1	A	712	LEU
1	A	713	ASN
1	B	338	THR
1	B	397	THR
1	B	432	SER
1	B	552	ILE
1	B	597	TYR
1	B	605	TYR
1	B	707	CYS
1	B	712	LEU
1	D	80	SER
1	D	338	THR
1	D	397	THR
1	D	597	TYR
1	D	605	TYR
1	D	707	CYS
1	D	712	LEU
1	C	315	GLU
1	C	338	THR
1	C	354	SER
1	C	597	TYR
1	C	605	TYR
1	C	707	CYS

Some sidechains can be flipped to improve hydrogen bonding and reduce clashes. All (12) such sidechains are listed below:

Mol	Chain	Res	Type
1	A	120	ASN

Continued on next page...

Continued from previous page...

Mol	Chain	Res	Type
1	A	316	GLN
1	B	658	GLN
1	D	316	GLN
1	D	423	ASN
1	D	437	GLN
1	D	619	GLN
1	D	629	GLN
1	D	658	GLN
1	C	68	HIS
1	C	590	HIS
1	C	658	GLN

5.3.3 RNA [i](#)

There are no RNA molecules in this entry.

5.4 Non-standard residues in protein, DNA, RNA chains [i](#)

There are no non-standard protein/DNA/RNA residues in this entry.

5.5 Carbohydrates [i](#)

There are no carbohydrates in this entry.

5.6 Ligand geometry [i](#)

28 ligands are modelled in this entry.

In the following table, the Counts columns list the number of bonds (or angles) for which Mogul statistics could be retrieved, the number of bonds (or angles) that are observed in the model and the number of bonds (or angles) that are defined in the Chemical Component Dictionary. The Link column lists molecule types, if any, to which the group is linked. The Z score for a bond length (or angle) is the number of standard deviations the observed value is removed from the expected value. A bond length (or angle) with $|Z| > 2$ is considered an outlier worth inspection. RMSZ is the root-mean-square of all Z scores of the bond lengths (or angles).

Mol	Type	Chain	Res	Link	Bond lengths			Bond angles		
					Counts	RMSZ	# Z > 2	Counts	RMSZ	# Z > 2
2	NAG	A	801	1,2	14,14,15	0.59	0	17,19,21	2.33	5 (29%)
2	NAG	A	802	3,2	14,14,15	0.71	0	17,19,21	2.57	7 (41%)

Mol	Type	Chain	Res	Link	Bond lengths			Bond angles		
					Counts	RMSZ	# Z > 2	Counts	RMSZ	# Z > 2
3	BMA	A	803	2	11,11,12	0.53	0	15,15,17	1.65	4 (26%)
2	NAG	A	804	1,2	14,14,15	0.66	0	17,19,21	1.58	4 (23%)
2	NAG	A	805	3,2	14,14,15	0.43	0	17,19,21	1.45	4 (23%)
3	BMA	A	806	2	11,11,12	0.36	0	15,15,17	1.20	1 (6%)
2	NAG	A	807	1	14,14,15	0.44	0	17,19,21	0.89	1 (5%)
2	NAG	B	801	1,2	14,14,15	0.59	0	17,19,21	2.37	7 (41%)
2	NAG	B	802	3,2	14,14,15	0.38	0	17,19,21	0.74	0
3	BMA	B	803	2	11,11,12	0.29	0	15,15,17	1.01	1 (6%)
2	NAG	B	804	1,2	14,14,15	0.69	0	17,19,21	2.64	6 (35%)
2	NAG	B	805	3,2	14,14,15	0.35	0	17,19,21	1.11	1 (5%)
3	BMA	B	806	2	11,11,12	0.32	0	15,15,17	1.13	1 (6%)
2	NAG	B	807	1	14,14,15	0.35	0	17,19,21	0.68	0
2	NAG	C	801	1,2	14,14,15	0.57	0	17,19,21	1.35	3 (17%)
2	NAG	C	802	3,2	14,14,15	0.56	0	17,19,21	2.25	2 (11%)
3	BMA	C	803	2	11,11,12	0.68	0	15,15,17	1.47	3 (20%)
2	NAG	C	804	1,2	14,14,15	0.51	0	17,19,21	0.89	0
2	NAG	C	805	3,2	14,14,15	0.39	0	17,19,21	1.52	4 (23%)
3	BMA	C	806	2	11,11,12	0.53	0	15,15,17	1.55	3 (20%)
2	NAG	C	807	1	14,14,15	0.48	0	17,19,21	1.73	4 (23%)
2	NAG	D	801	1,2	14,14,15	0.67	0	17,19,21	1.39	4 (23%)
2	NAG	D	802	3,2	14,14,15	0.50	0	17,19,21	1.56	2 (11%)
3	BMA	D	803	2	11,11,12	0.41	0	15,15,17	0.94	1 (6%)
2	NAG	D	804	1,2	14,14,15	0.47	0	17,19,21	1.63	4 (23%)
2	NAG	D	805	3,2	14,14,15	0.36	0	17,19,21	1.74	4 (23%)
3	BMA	D	806	2	11,11,12	0.37	0	15,15,17	1.15	1 (6%)
2	NAG	D	807	-	14,14,15	0.45	0	17,19,21	0.92	0

In the following table, the Chirals column lists the number of chiral outliers, the number of chiral centers analysed, the number of these observed in the model and the number defined in the Chemical Component Dictionary. Similar counts are reported in the Torsion and Rings columns. '-' means no outliers of that kind were identified.

Mol	Type	Chain	Res	Link	Chirals	Torsions	Rings
2	NAG	A	801	1,2	-	0/6/23/26	0/1/1/1
2	NAG	A	802	3,2	-	0/6/23/26	0/1/1/1
3	BMA	A	803	2	-	0/2/19/22	0/1/1/1
2	NAG	A	804	1,2	-	0/6/23/26	0/1/1/1

Continued on next page...

Continued from previous page...

Mol	Type	Chain	Res	Link	Chirals	Torsions	Rings
2	NAG	A	805	3,2	-	0/6/23/26	0/1/1/1
3	BMA	A	806	2	-	0/2/19/22	0/1/1/1
2	NAG	A	807	1	-	0/6/23/26	0/1/1/1
2	NAG	B	801	1,2	-	0/6/23/26	0/1/1/1
2	NAG	B	802	3,2	-	0/6/23/26	0/1/1/1
3	BMA	B	803	2	-	0/2/19/22	0/1/1/1
2	NAG	B	804	1,2	-	0/6/23/26	0/1/1/1
2	NAG	B	805	3,2	-	0/6/23/26	0/1/1/1
3	BMA	B	806	2	-	0/2/19/22	0/1/1/1
2	NAG	B	807	1	-	0/6/23/26	0/1/1/1
2	NAG	C	801	1,2	-	0/6/23/26	0/1/1/1
2	NAG	C	802	3,2	-	1/6/23/26	0/1/1/1
3	BMA	C	803	2	-	0/2/19/22	0/1/1/1
2	NAG	C	804	1,2	-	0/6/23/26	0/1/1/1
2	NAG	C	805	3,2	-	0/6/23/26	0/1/1/1
3	BMA	C	806	2	-	0/2/19/22	0/1/1/1
2	NAG	C	807	1	-	0/6/23/26	0/1/1/1
2	NAG	D	801	1,2	-	0/6/23/26	0/1/1/1
2	NAG	D	802	3,2	-	0/6/23/26	0/1/1/1
3	BMA	D	803	2	-	0/2/19/22	0/1/1/1
2	NAG	D	804	1,2	-	1/6/23/26	0/1/1/1
2	NAG	D	805	3,2	-	0/6/23/26	0/1/1/1
3	BMA	D	806	2	-	0/2/19/22	0/1/1/1
2	NAG	D	807	-	-	0/6/23/26	0/1/1/1

There are no bond length outliers.

All (77) bond angle outliers are listed below:

Mol	Chain	Res	Type	Atoms	Z	Observed(°)	Ideal(°)
2	C	802	NAG	O4-C4-C3	-7.19	93.56	110.34
2	D	805	NAG	O5-C1-C2	-4.46	105.37	111.52
2	A	801	NAG	C4-C3-C2	-4.40	104.56	111.02
2	A	804	NAG	O5-C5-C6	-4.10	100.66	107.15
2	A	802	NAG	C3-C4-C5	-3.93	103.22	110.24
2	A	802	NAG	O5-C1-C2	-3.78	106.31	111.52
2	B	801	NAG	O6-C6-C5	-3.71	98.35	111.29
2	B	804	NAG	O5-C1-C2	-3.41	106.82	111.52
2	B	801	NAG	O5-C1-C2	-3.16	107.15	111.52
3	C	806	BMA	C1-O5-C5	-2.91	108.19	112.19
2	A	801	NAG	O5-C5-C4	-2.85	103.89	110.83
3	C	806	BMA	C1-C2-C3	-2.81	106.10	109.66
3	C	803	BMA	O2-C2-C3	-2.79	104.74	110.19

Continued on next page...

Continued from previous page...

Mol	Chain	Res	Type	Atoms	Z	Observed(°)	Ideal(°)
2	B	804	NAG	O5-C5-C6	-2.75	102.79	107.15
3	A	803	BMA	O4-C4-C3	-2.75	103.92	110.34
3	D	806	BMA	C1-C2-C3	-2.71	106.23	109.66
2	C	805	NAG	O4-C4-C5	-2.70	102.54	109.31
2	C	807	NAG	C6-C5-C4	-2.65	106.74	112.99
2	B	801	NAG	O5-C5-C6	-2.60	103.03	107.15
2	A	802	NAG	C4-C3-C2	-2.58	107.23	111.02
2	C	801	NAG	O5-C1-C2	-2.54	108.02	111.52
2	A	805	NAG	O5-C1-C2	-2.48	108.10	111.52
2	C	805	NAG	O5-C1-C2	-2.48	108.10	111.52
3	C	803	BMA	C1-O5-C5	-2.48	108.78	112.19
2	C	805	NAG	O4-C4-C3	-2.39	104.76	110.34
3	A	806	BMA	O2-C2-C3	-2.36	105.59	110.19
2	B	801	NAG	O7-C7-N2	-2.32	117.56	121.94
3	A	803	BMA	O5-C1-C2	-2.32	107.17	110.78
2	D	801	NAG	C2-N2-C7	-2.25	119.66	122.94
2	A	804	NAG	O6-C6-C5	-2.21	103.59	111.29
2	D	805	NAG	C3-C4-C5	-2.20	106.30	110.24
2	A	805	NAG	C3-C4-C5	-2.09	106.50	110.24
3	A	803	BMA	O3-C3-C4	-2.09	105.46	110.34
2	B	801	NAG	O4-C4-C3	-2.08	105.49	110.34
2	A	804	NAG	O4-C4-C5	-2.02	104.25	109.31
3	D	803	BMA	O2-C2-C1	2.00	113.21	109.17
2	D	801	NAG	O5-C5-C6	2.08	110.45	107.15
2	D	801	NAG	C1-O5-C5	2.11	115.09	112.19
2	C	801	NAG	C2-N2-C7	2.13	126.05	122.94
2	C	807	NAG	C2-N2-C7	2.15	126.08	122.94
2	D	802	NAG	C1-O5-C5	2.20	115.22	112.19
2	D	804	NAG	O5-C1-C2	2.26	114.64	111.52
3	B	803	BMA	O5-C5-C6	2.27	110.74	107.15
2	D	801	NAG	O4-C4-C3	2.37	115.88	110.34
2	A	801	NAG	O4-C4-C5	2.41	115.35	109.31
2	B	804	NAG	C8-C7-N2	2.41	120.33	116.10
2	A	805	NAG	O5-C5-C6	2.43	111.00	107.15
3	C	803	BMA	C6-C5-C4	2.52	118.95	112.99
2	C	801	NAG	O3-C3-C2	2.54	114.82	109.39
2	B	801	NAG	C8-C7-N2	2.65	120.75	116.10
2	D	805	NAG	C1-C2-N2	2.66	115.02	110.49
2	A	807	NAG	O5-C5-C6	2.68	111.38	107.15
2	A	805	NAG	C1-O5-C5	2.68	115.88	112.19
3	B	806	BMA	O5-C5-C6	2.73	111.47	107.15
2	A	804	NAG	O4-C4-C3	2.82	116.93	110.34

Continued on next page...

Continued from previous page...

Mol	Chain	Res	Type	Atoms	Z	Observed(°)	Ideal(°)
2	D	804	NAG	O4-C4-C5	2.91	116.58	109.31
2	C	805	NAG	C2-N2-C7	2.92	127.20	122.94
2	B	804	NAG	C1-C2-N2	2.97	115.56	110.49
2	A	802	NAG	C1-C2-N2	2.99	115.59	110.49
2	D	804	NAG	C2-N2-C7	3.00	127.31	122.94
2	D	804	NAG	C6-C5-C4	3.01	120.10	112.99
2	B	805	NAG	C2-N2-C7	3.05	127.39	122.94
2	A	802	NAG	O3-C3-C4	3.11	117.61	110.34
2	C	807	NAG	C1-C2-N2	3.27	116.08	110.49
2	D	805	NAG	C1-O5-C5	3.35	116.80	112.19
3	A	803	BMA	O3-C3-C2	3.37	116.31	110.04
2	A	802	NAG	O4-C4-C3	3.39	118.25	110.34
3	C	806	BMA	O5-C5-C6	3.51	112.70	107.15
2	C	807	NAG	O5-C5-C6	3.64	112.91	107.15
2	D	802	NAG	C2-N2-C7	4.02	128.80	122.94
2	C	802	NAG	C4-C3-C2	4.13	117.07	111.02
2	A	801	NAG	O4-C4-C3	4.28	120.34	110.34
2	B	804	NAG	C1-O5-C5	5.18	119.31	112.19
2	A	801	NAG	O5-C5-C6	5.31	115.55	107.15
2	A	802	NAG	C1-O5-C5	6.35	120.92	112.19
2	B	801	NAG	C2-N2-C7	6.56	132.52	122.94
2	B	804	NAG	C2-N2-C7	7.00	133.15	122.94

There are no chirality outliers.

All (2) torsion outliers are listed below:

Mol	Chain	Res	Type	Atoms
2	D	804	NAG	O7-C7-N2-C2
2	C	802	NAG	O7-C7-N2-C2

There are no ring outliers.

14 monomers are involved in 30 short contacts:

Mol	Chain	Res	Type	Clashes	Symm-Clashes
2	A	801	NAG	1	0
2	A	802	NAG	1	0
2	A	804	NAG	1	0
2	A	805	NAG	4	0
2	B	801	NAG	6	0
2	B	804	NAG	4	0
2	B	805	NAG	2	0

Continued on next page...

Continued from previous page...

Mol	Chain	Res	Type	Clashes	Symm-Clashes
2	C	801	NAG	2	0
2	C	802	NAG	2	1
2	C	804	NAG	1	0
2	C	805	NAG	1	0
2	D	801	NAG	1	0
2	D	804	NAG	3	0
2	D	807	NAG	4	0

5.7 Other polymers [i](#)

There are no such residues in this entry.

5.8 Polymer linkage issues [i](#)

There are no chain breaks in this entry.

6 Fit of model and data

6.1 Protein, DNA and RNA chains

In the following table, the column labelled ‘#RSRZ > 2’ contains the number (and percentage) of RSRZ outliers, followed by percent RSRZ outliers for the chain as percentile scores relative to all X-ray entries and entries of similar resolution. The OWAB column contains the minimum, median, 95th percentile and maximum values of the occupancy-weighted average B-factor per residue. The column labelled ‘Q < 0.9’ lists the number of (and percentage) of residues with an average occupancy less than 0.9.

Mol	Chain	Analysed	<RSRZ>	#RSRZ>2	OWAB(Å ²)	Q<0.9
1	A	648/732 (88%)	-0.25	0 100 100	107, 178, 239, 297	0
1	B	648/732 (88%)	-0.24	4 (0%) 89 83	107, 190, 259, 330	0
1	C	646/732 (88%)	-0.17	6 (0%) 84 76	115, 205, 289, 342	0
1	D	648/732 (88%)	-0.13	11 (1%) 70 59	133, 224, 288, 377	0
All	All	2590/2928 (88%)	-0.20	21 (0%) 86 79	107, 198, 279, 377	0

All (21) RSRZ outliers are listed below:

Mol	Chain	Res	Type	RSRZ
1	B	624	TYR	3.6
1	B	623	ASP	3.3
1	B	625	VAL	3.2
1	D	608	GLN	2.8
1	C	520	GLU	2.6
1	C	624	TYR	2.6
1	D	502	VAL	2.5
1	D	627	ALA	2.4
1	B	626	VAL	2.4
1	C	571	PHE	2.3
1	D	311	SER	2.3
1	C	420	LYS	2.2
1	D	628	LYS	2.2
1	C	54	GLY	2.2
1	D	139	MET	2.1
1	D	75	LEU	2.1
1	C	573	ASP	2.1
1	D	625	VAL	2.1
1	D	552	ILE	2.1
1	D	94	LEU	2.0
1	D	626	VAL	2.0

6.2 Non-standard residues in protein, DNA, RNA chains [i](#)

There are no non-standard protein/DNA/RNA residues in this entry.

6.3 Carbohydrates [i](#)

There are no carbohydrates in this entry.

6.4 Ligands [i](#)

In the following table, the Atoms column lists the number of modelled atoms in the group and the number defined in the chemical component dictionary. The B-factors column lists the minimum, median, 95th percentile and maximum values of B factors of atoms in the group. The column labelled 'Q< 0.9' lists the number of atoms with occupancy less than 0.9.

Mol	Type	Chain	Res	Atoms	RSCC	RSR	B-factors(Å ²)	Q<0.9
3	BMA	D	803	11/12	0.57	0.45	261,279,288,288	0
3	BMA	B	803	11/12	0.59	0.55	298,309,326,334	0
3	BMA	D	806	11/12	0.68	0.14	261,306,326,336	0
3	BMA	C	806	11/12	0.75	0.23	278,289,293,296	0
3	BMA	C	803	11/12	0.76	0.38	152,196,221,225	0
3	BMA	A	803	11/12	0.80	0.54	206,230,249,249	0
3	BMA	A	806	11/12	0.83	0.23	234,273,285,294	0
3	BMA	B	806	11/12	0.83	0.17	291,303,307,307	0
2	NAG	B	804	14/15	0.84	0.20	265,276,320,355	0
2	NAG	A	802	14/15	0.85	0.26	175,211,235,238	0
2	NAG	D	804	14/15	0.86	0.12	251,284,301,311	0
2	NAG	A	804	14/15	0.87	0.18	152,186,216,223	0
2	NAG	C	807	14/15	0.88	0.56	170,217,226,230	0
2	NAG	A	805	14/15	0.89	0.19	208,231,258,275	0
2	NAG	B	801	14/15	0.90	0.24	179,207,223,228	0
2	NAG	B	802	14/15	0.90	0.24	178,204,242,277	0
2	NAG	B	807	14/15	0.90	0.35	157,185,210,222	0
2	NAG	A	807	14/15	0.90	0.44	173,194,205,220	0
2	NAG	C	805	14/15	0.91	0.17	247,259,269,275	0
2	NAG	C	802	14/15	0.91	0.21	176,203,223,227	0
2	NAG	D	802	14/15	0.91	0.22	210,227,245,261	0
2	NAG	C	801	14/15	0.92	0.21	154,172,182,186	0
2	NAG	D	801	14/15	0.92	0.22	142,168,192,207	0
2	NAG	B	805	14/15	0.93	0.09	257,282,301,305	0
2	NAG	A	801	14/15	0.93	0.28	128,153,176,202	0
2	NAG	D	807	14/15	0.94	0.36	182,190,213,220	0
2	NAG	D	805	14/15	0.94	0.11	278,294,311,313	0

Continued on next page...

Continued from previous page...

Mol	Type	Chain	Res	Atoms	RSCC	RSR	B-factors(\AA^2)	Q<0.9
2	NAG	C	804	14/15	0.95	0.24	229,252,264,284	0

6.5 Other polymers [i](#)

There are no such residues in this entry.