



Full wwPDB EM Validation Report ⓘ

Dec 19, 2022 – 09:25 am GMT

PDB ID : 7NOH
EMDB ID : EMD-12502
Title : Structure of the mature RSV CA lattice: Group III, hexamer-hexamer interface, class 5'5
Authors : Obr, M.; Ricana, C.L.; Nikulin, N.; Feathers, J.-P.R.; Klanschnig, M.; Thader, A.; Johnson, M.C.; Vogt, V.M.; Schur, F.K.M.; Dick, R.A.
Deposited on : 2021-02-25
Resolution : 7.10 Å (reported)
Based on initial model : 7NO0

This is a Full wwPDB EM Validation Report for a publicly released PDB entry.

We welcome your comments at validation@mail.wwpdb.org

A user guide is available at

<https://www.wwpdb.org/validation/2017/EMValidationReportHelp>

with specific help available everywhere you see the ⓘ symbol.

The types of validation reports are described at

<http://www.wwpdb.org/validation/2017/FAQs#types>.

The following versions of software and data (see [references ⓘ](#)) were used in the production of this report:

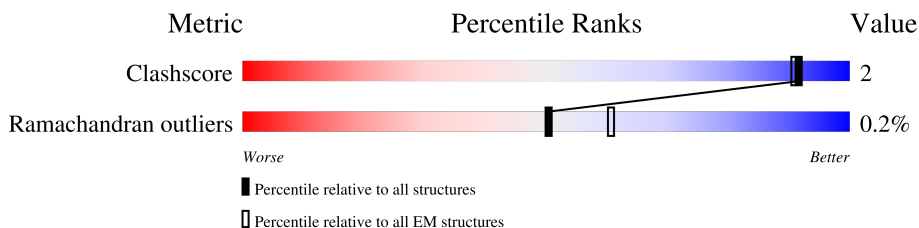
EMDB validation analysis : 0.0.1.dev43
MolProbity : 4.02b-467
Percentile statistics : 20191225.v01 (using entries in the PDB archive December 25th 2019)
MapQ : 1.9.9
Ideal geometry (proteins) : Engh & Huber (2001)
Ideal geometry (DNA, RNA) : Parkinson et al. (1996)
Validation Pipeline (wwPDB-VP) : 2.31.3

1 Overall quality at a glance i

The following experimental techniques were used to determine the structure:
ELECTRON MICROSCOPY

The reported resolution of this entry is 7.10 Å.

Percentile scores (ranging between 0-100) for global validation metrics of the entry are shown in the following graphic. The table shows the number of entries on which the scores are based.




Metric	Whole archive (#Entries)	EM structures (#Entries)
Clashscore	158937	4297
Ramachandran outliers	154571	4023

The table below summarises the geometric issues observed across the polymeric chains and their fit to the map. The red, orange, yellow and green segments of the bar indicate the fraction of residues that contain outliers for ≥ 3 , 2, 1 and 0 types of geometric quality criteria respectively. A grey segment represents the fraction of residues that are not modelled. The numeric value for each fraction is indicated below the corresponding segment, with a dot representing fractions $\leq 5\%$. The upper red bar (where present) indicates the fraction of residues that have poor fit to the EM map (all-atom inclusion $< 40\%$). The numeric value is given above the bar.

Mol	Chain	Length	Quality of chain
1	A	229	
1	B	229	
1	C	229	
1	D	229	
1	E	229	
1	F	229	
1	G	229	
1	H	229	
1	I	229	

Continued on next page...

Continued from previous page...

Mol	Chain	Length	Quality of chain
1	J	229	 <p>A horizontal bar chart representing the quality of chain. The bar is divided into three segments: a small red segment on the left labeled '5%', a large green segment in the middle labeled '60%', and a grey segment on the right labeled '39%'. A small black dot is visible on the green segment.</p>

2 Entry composition

There is only 1 type of molecule in this entry. The entry contains 5208 atoms, of which 0 are hydrogens and 0 are deuteriums.

In the tables below, the AltConf column contains the number of residues with at least one atom in alternate conformation and the Trace column contains the number of residues modelled with at most 2 atoms.

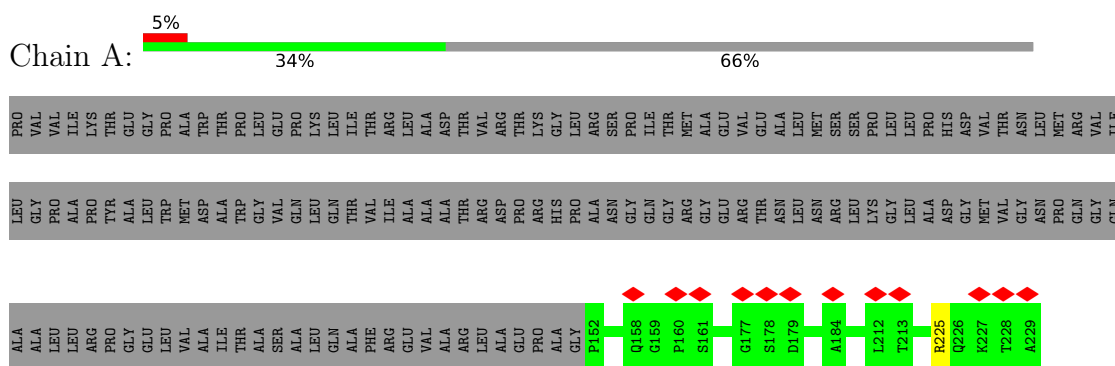
- Molecule 1 is a protein called Capsid protein p27, alternate cleaved 1.

Mol	Chain	Residues	Atoms				AltConf	Trace
			Total	C	N	O		
1	A	78	312	156	78	78	0	0
1	B	217	868	434	217	217	0	0
1	C	139	556	278	139	139	0	0
1	D	78	312	156	78	78	0	0
1	E	217	868	434	217	217	0	0
1	F	139	556	278	139	139	0	0
1	G	78	312	156	78	78	0	0
1	H	139	556	278	139	139	0	0
1	I	78	312	156	78	78	0	0
1	J	139	556	278	139	139	0	0

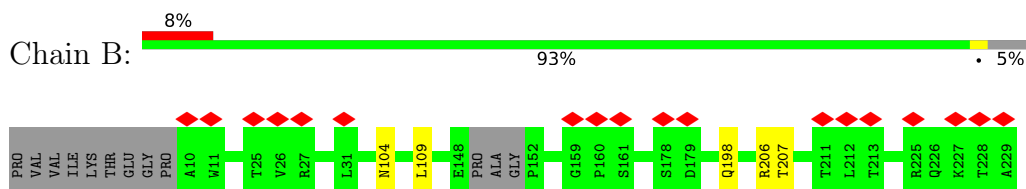
3 Residue-property plots [i](#)

These plots are drawn for all protein, RNA, DNA and oligosaccharide chains in the entry. The first graphic for a chain summarises the proportions of the various outlier classes displayed in the second graphic. The second graphic shows the sequence view annotated by issues in geometry and atom inclusion in map density. Residues are color-coded according to the number of geometric quality criteria for which they contain at least one outlier: green = 0, yellow = 1, orange = 2 and red = 3 or more. A red diamond above a residue indicates a poor fit to the EM map for this residue (all-atom inclusion < 40%). Stretches of 2 or more consecutive residues without any outlier are shown as a green connector. Residues present in the sample, but not in the model, are shown in grey.

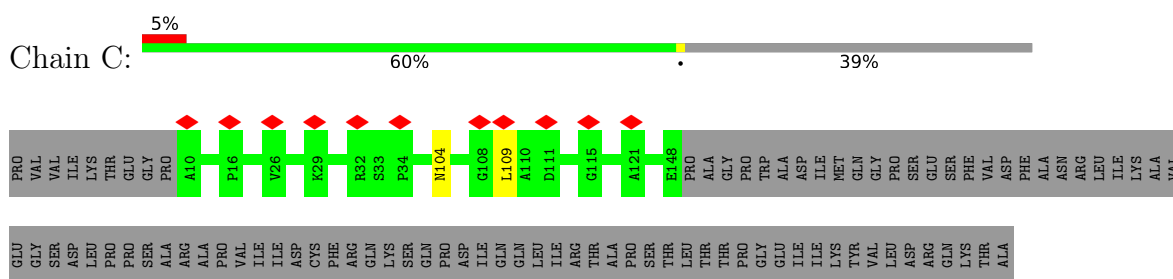
- Molecule 1: Capsid protein p27, alternate cleaved 1



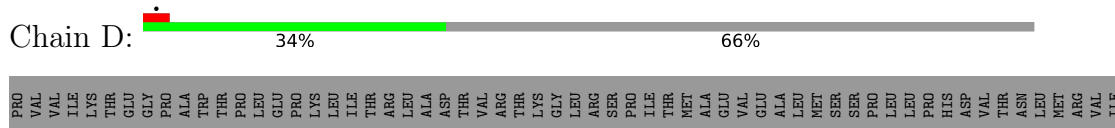
- Molecule 1: Capsid protein p27, alternate cleaved 1

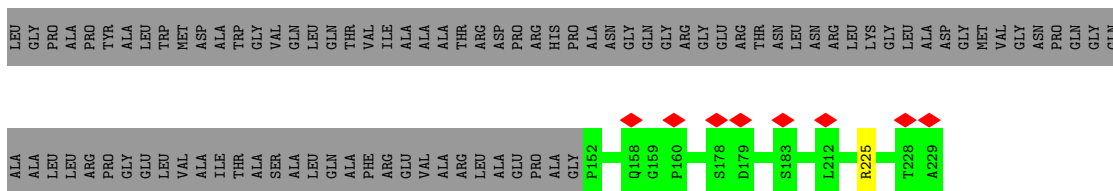


- Molecule 1: Capsid protein p27, alternate cleaved 1

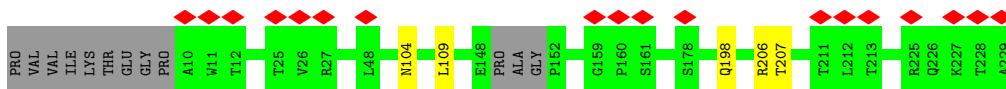


- Molecule 1: Capsid protein p27, alternate cleaved 1

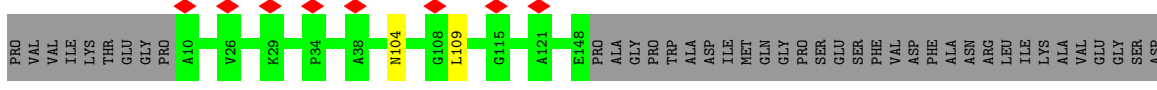




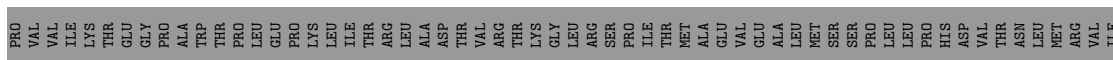
• Molecule 1: Capsid protein p27, alternate cleaved 1



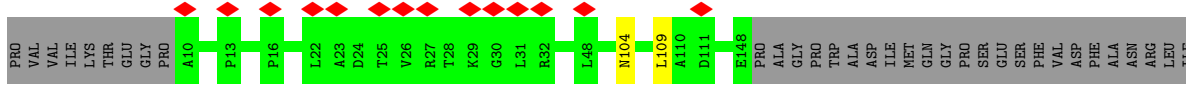
• Molecule 1: Capsid protein p27, alternate cleaved 1



• Molecule 1: Capsid protein p27, alternate cleaved 1



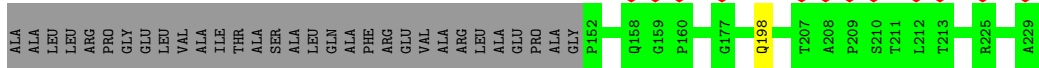
• Molecule 1: Capsid protein p27, alternate cleaved 1



• Molecule 1: Capsid protein p27, alternate cleaved 1



PRO	VAL	VAL	ILE	LYS	THR	GLU	GLY	PRO	ALA	ASP	TRP	TRP	PRO	LEU	GLU	LEU	GLN	LYS	LEU	GLN	THR	ILE	THR	ARG	LEU	ALA	ASP	THR	VAL	ARG	THR	PRO	LYS	HIS	GLY	LEU	ARG	ASN	LEU	PRO	GLY	GLN	ILE	THR	THR	THR	GLY	MET	ALA	ALA	GLU	VAL	GLU	ALA	ASN	LEU	MET	SER	SER	PRO	PRO	LEU	LEU	LEU	PRO	HIS	ASP	VAL	THR	THR	ASN	GLY	LEU	PRO	MET	GLN	GLN	ILE
LEU	GLY	PRO	ALA	PRO	TYR	ALA	LEU	TRP	MET	ASP	ALA	TRP	PRO	GLY	VAL	GLN	LEU	LEU	LEU	THR	VAL	ILE	ARG	LEU	ALA	ALA	ALA	THR	ARG	ASP	PRO	ARG	HIS	PRO	PRO	ALA	GLY	ALA	ASN	GLY	ASN	LEU	GLN	ILE	THR	THR	THR	GLY	GLY	ALA	GLU	ARG	THR	ASN	LEU	ASN	ARG	SER	SER	PRO	LEU	GLY	LEU	LEU	ALA	ASP	GLY	MET	VAL	VAL	THR	ASN	GLY	PRO	MET	GLN	GLN	ILE



- Molecule 1: Capsid protein p27, alternate cleaved 1



PRO	VAL	VAL	ILE	LYS	THR	GLU	GLY	PRO	ALA	ASP	TRP	TRP	PRO	LEU	GLU	LEU	GLN	LYS	LEU	GLN	THR	ILE	THR	ARG	LEU	ALA	ASP	THR	VAL	ARG	THR	PRO	LYS	HIS	GLY	LEU	ARG	ASN	LEU	PRO	GLY	GLN	ILE	THR	THR	THR	GLY	MET	ALA	GLU	VAL	GLU	ALA	ASN	LEU	MET	SER	SER	PRO	PRO	LEU	LEU	LEU	PRO	HIS	ASP	VAL	THR	THR	ASN	GLY	LEU	PRO	MET	GLN	GLN	ILE
SER	ASP	LEU	PRO	PRO	SER	ALA	ARG	ALA	PRO	VAL	ILE	ILE	ASP	CYS	PHE	ARG	GLN	GLN	LYS	SER	GLN	PRO	PRO	ASP	ILE	ILE	GLN	GLN	LEU	ILE	THR	THR	ALA	PRO	SER	THR	LEU	THR	THR	THR	THR	PRO	GLY	ILE	ILE	LYS	TYR	VAL	VAL	LEU	ASP	ARG	GLN	GLN	LYS	THR	THR	ALA	ALA	ALA	ASN	ARG	ILE	LYS	ALA	VAL	GLU	GLY	ALA	ALA	ILE						

4 Experimental information

Property	Value	Source
EM reconstruction method	SUBTOMOGRAM AVERAGING	Depositor
Imposed symmetry	POINT, C2	Depositor
Number of subtomograms used	3972	Depositor
Resolution determination method	FSC 0.143 CUT-OFF	Depositor
CTF correction method	PHASE FLIPPING AND AMPLITUDE CORRECTION; CTF-correction was initially performed using ctfphaseflip in IMOD and NovaCTF in the final steps	Depositor
Microscope	FEI TITAN KRIOS	Depositor
Voltage (kV)	300	Depositor
Electron dose ($e^-/\text{\AA}^2$)	3.5	Depositor
Minimum defocus (nm)	1500	Depositor
Maximum defocus (nm)	4000	Depositor
Magnification	105000	Depositor
Image detector	GATAN K2 QUANTUM (4k x 4k)	Depositor
Maximum map value	28.549	Depositor
Minimum map value	-21.705	Depositor
Average map value	0.001	Depositor
Map value standard deviation	1.681	Depositor
Recommended contour level	4.0	Depositor
Map size (\AA)	254.9376, 254.9376, 254.9376	wwPDB
Map dimensions	192, 192, 192	wwPDB
Map angles ($^\circ$)	90.0, 90.0, 90.0	wwPDB
Pixel spacing (\AA)	1.3278, 1.3278, 1.3278	Depositor

5 Model quality [i](#)

5.1 Standard geometry [i](#)

The Z score for a bond length (or angle) is the number of standard deviations the observed value is removed from the expected value. A bond length (or angle) with $|Z| > 5$ is considered an outlier worth inspection. RMSZ is the root-mean-square of all Z scores of the bond lengths (or angles).

Mol	Chain	Bond lengths		Bond angles	
		RMSZ	# Z >5	RMSZ	# Z >5
1	A	0.27	0/311	0.52	0/387
1	B	0.27	0/866	0.47	0/1079
1	C	0.27	0/555	0.44	0/692
1	D	0.27	0/311	0.52	0/387
1	E	0.27	0/866	0.47	0/1079
1	F	0.27	0/555	0.44	0/692
1	G	0.27	0/311	0.52	0/387
1	H	0.28	0/555	0.44	0/692
1	I	0.27	0/311	0.52	0/387
1	J	0.27	0/555	0.44	0/692
All	All	0.27	0/5196	0.47	0/6474

There are no bond length outliers.

There are no bond angle outliers.

There are no chirality outliers.

There are no planarity outliers.

5.2 Too-close contacts [i](#)

In the following table, the Non-H and H(model) columns list the number of non-hydrogen atoms and hydrogen atoms in the chain respectively. The H(added) column lists the number of hydrogen atoms added and optimized by MolProbity. The Clashes column lists the number of clashes within the asymmetric unit, whereas Symm-Clashes lists symmetry-related clashes.

Mol	Chain	Non-H	H(model)	H(added)	Clashes	Symm-Clashes
1	A	312	0	76	2	0
1	B	868	0	225	3	0
1	C	556	0	149	1	0
1	D	312	0	76	2	0
1	E	868	0	225	3	0
1	F	556	0	149	1	0

Continued on next page...

Continued from previous page...

Mol	Chain	Non-H	H(model)	H(added)	Clashes	Symm-Clashes
1	G	312	0	76	0	0
1	H	556	0	149	1	0
1	I	312	0	76	0	0
1	J	556	0	149	1	0
All	All	5208	0	1350	10	0

The all-atom clashscore is defined as the number of clashes found per 1000 atoms (including hydrogen atoms). The all-atom clashscore for this structure is 2.

All (10) close contacts within the same asymmetric unit are listed below, sorted by their clash magnitude.

Atom-1	Atom-2	Interatomic distance (Å)	Clash overlap (Å)
1:A:225:ARG:CA	1:E:206:ARG:O	2.60	0.49
1:A:225:ARG:O	1:E:207:THR:CA	2.62	0.48
1:B:206:ARG:O	1:D:225:ARG:CA	2.62	0.48
1:B:207:THR:CA	1:D:225:ARG:O	2.65	0.45
1:B:104:ASN:O	1:B:109:LEU:N	2.50	0.45
1:J:104:ASN:O	1:J:109:LEU:N	2.50	0.44
1:H:104:ASN:O	1:H:109:LEU:N	2.50	0.44
1:E:104:ASN:O	1:E:109:LEU:N	2.50	0.44
1:F:104:ASN:O	1:F:109:LEU:N	2.50	0.44
1:C:104:ASN:O	1:C:109:LEU:N	2.50	0.44

There are no symmetry-related clashes.

5.3 Torsion angles [i](#)

5.3.1 Protein backbone [i](#)

In the following table, the Percentiles column shows the percent Ramachandran outliers of the chain as a percentile score with respect to all PDB entries followed by that with respect to all EM entries.

The Analysed column shows the number of residues for which the backbone conformation was analysed, and the total number of residues.

Mol	Chain	Analysed	Favoured	Allowed	Outliers	Percentiles
1	A	76/229 (33%)	73 (96%)	3 (4%)	0	100 100
1	B	213/229 (93%)	209 (98%)	3 (1%)	1 (0%)	29 69

Continued on next page...

Continued from previous page...

Mol	Chain	Analysed	Favoured	Allowed	Outliers	Percentiles	
1	C	137/229 (60%)	136 (99%)	1 (1%)	0	100	100
1	D	76/229 (33%)	73 (96%)	3 (4%)	0	100	100
1	E	213/229 (93%)	209 (98%)	3 (1%)	1 (0%)	29	69
1	F	137/229 (60%)	136 (99%)	1 (1%)	0	100	100
1	G	76/229 (33%)	73 (96%)	3 (4%)	0	100	100
1	H	137/229 (60%)	136 (99%)	1 (1%)	0	100	100
1	I	76/229 (33%)	73 (96%)	2 (3%)	1 (1%)	12	48
1	J	137/229 (60%)	136 (99%)	1 (1%)	0	100	100
All	All	1278/2290 (56%)	1254 (98%)	21 (2%)	3 (0%)	50	81

All (3) Ramachandran outliers are listed below:

Mol	Chain	Res	Type
1	B	198	GLN
1	E	198	GLN
1	I	198	GLN

5.3.2 Protein sidechains [i](#)

There are no protein residues with a non-rotameric sidechain to report in this entry.

5.3.3 RNA [i](#)

There are no RNA molecules in this entry.

5.4 Non-standard residues in protein, DNA, RNA chains [i](#)

There are no non-standard protein/DNA/RNA residues in this entry.

5.5 Carbohydrates [i](#)

There are no monosaccharides in this entry.

5.6 Ligand geometry [i](#)

There are no ligands in this entry.

5.7 Other polymers [i](#)

There are no such residues in this entry.

5.8 Polymer linkage issues [i](#)

There are no chain breaks in this entry.

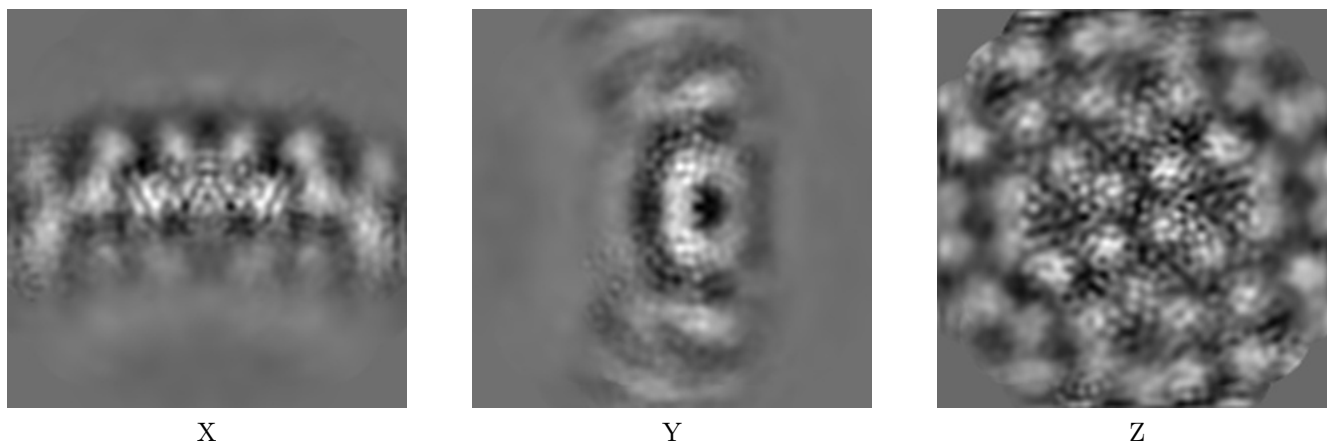
6 Map visualisation [i](#)

This section contains visualisations of the EMDB entry EMD-12502. These allow visual inspection of the internal detail of the map and identification of artifacts.

No raw map or half-maps were deposited for this entry and therefore no images, graphs, etc. pertaining to the raw map can be shown.

6.1 Orthogonal projections [i](#)

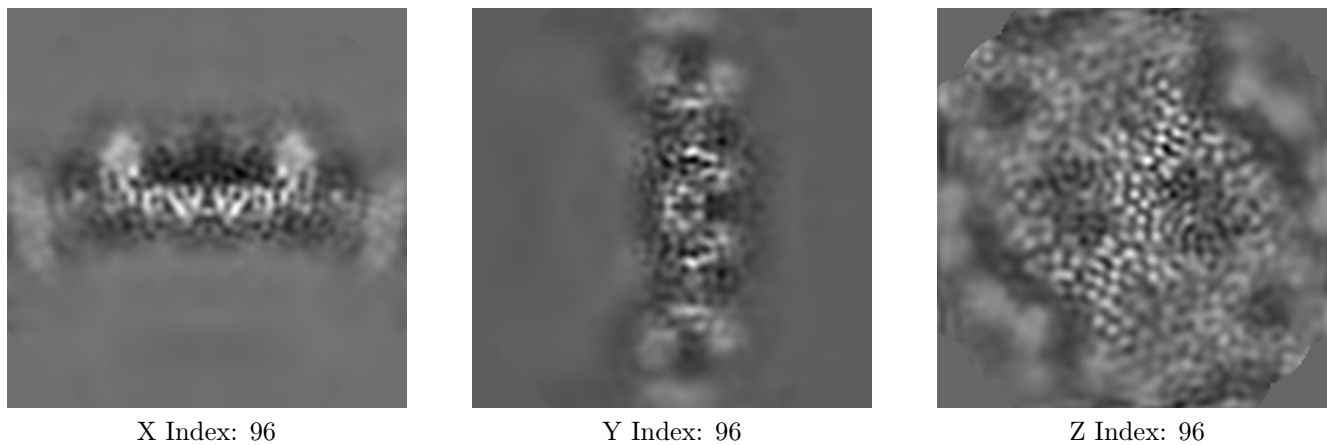
6.1.1 Primary map



The images above show the map projected in three orthogonal directions.

6.2 Central slices [i](#)

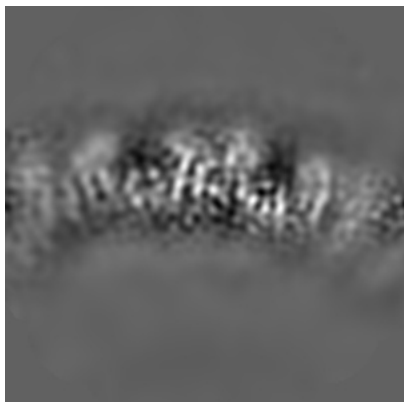
6.2.1 Primary map



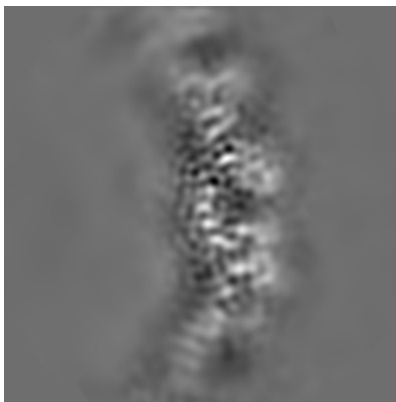
The images above show central slices of the map in three orthogonal directions.

6.3 Largest variance slices [i](#)

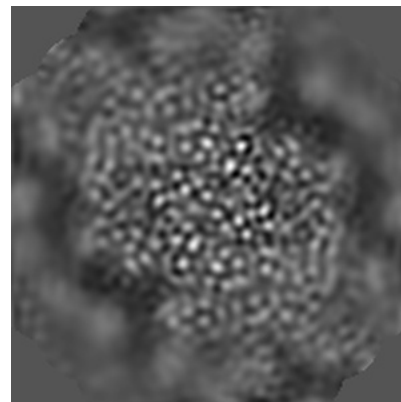
6.3.1 Primary map



X Index: 114



Y Index: 110

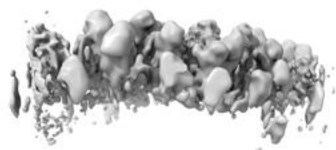


Z Index: 102

The images above show the largest variance slices of the map in three orthogonal directions.

6.4 Orthogonal surface views [i](#)

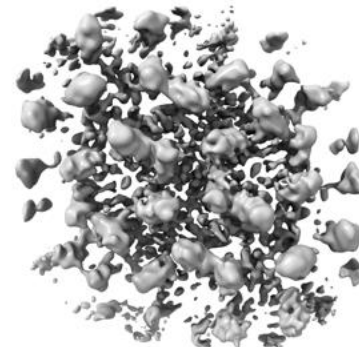
6.4.1 Primary map



X



Y



Z

The images above show the 3D surface view of the map at the recommended contour level 4.0. These images, in conjunction with the slice images, may facilitate assessment of whether an appropriate contour level has been provided.

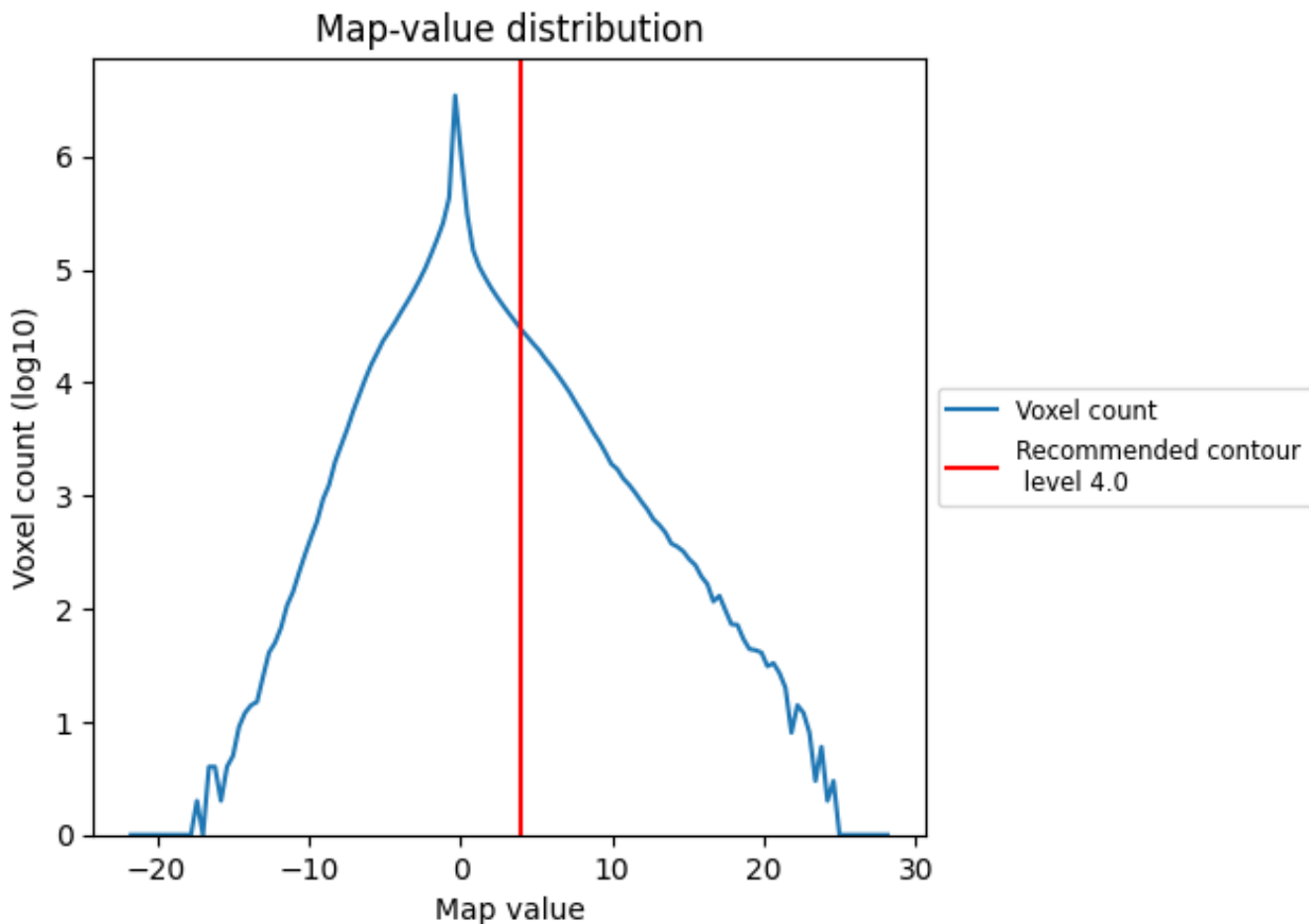
6.5 Mask visualisation

This section was not generated. No masks/segmentation were deposited.

7 Map analysis [i](#)

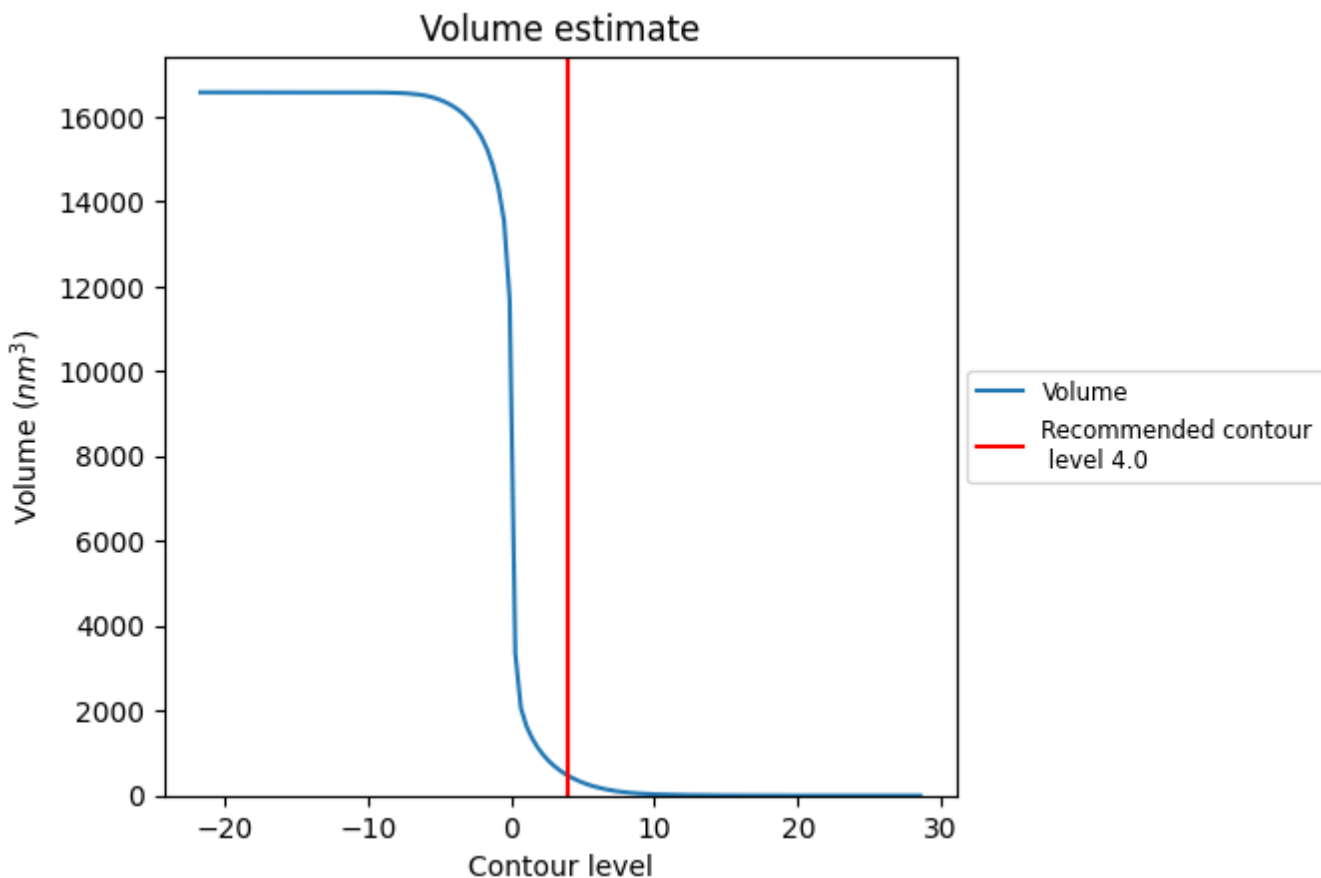
This section contains the results of statistical analysis of the map.

7.1 Map-value distribution [i](#)



The map-value distribution is plotted in 128 intervals along the x-axis. The y-axis is logarithmic. A spike in this graph at zero usually indicates that the volume has been masked.

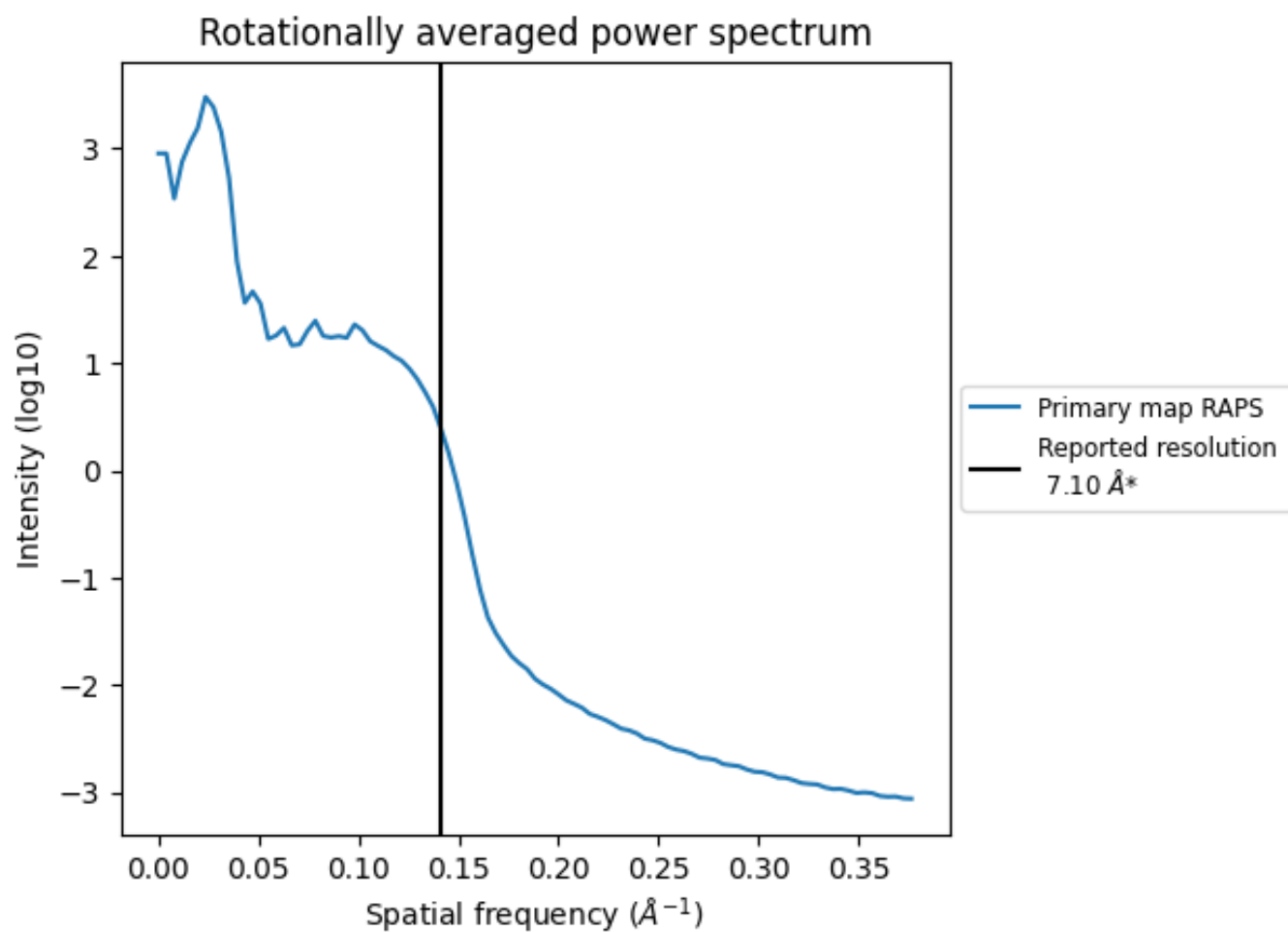
7.2 Volume estimate [i](#)



The volume at the recommended contour level is 463 nm³; this corresponds to an approximate mass of 418 kDa.

The volume estimate graph shows how the enclosed volume varies with the contour level. The recommended contour level is shown as a vertical line and the intersection between the line and the curve gives the volume of the enclosed surface at the given level.

7.3 Rotationally averaged power spectrum [i](#)



*Reported resolution corresponds to spatial frequency of 0.141\AA^{-1}

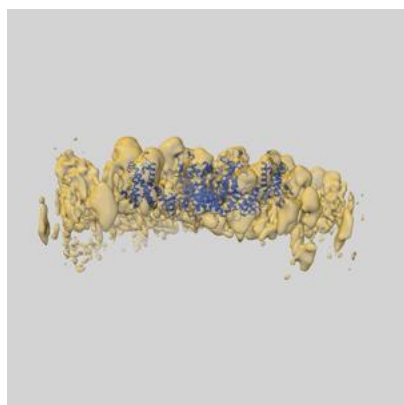
8 Fourier-Shell correlation

This section was not generated. No FSC curve or half-maps provided.

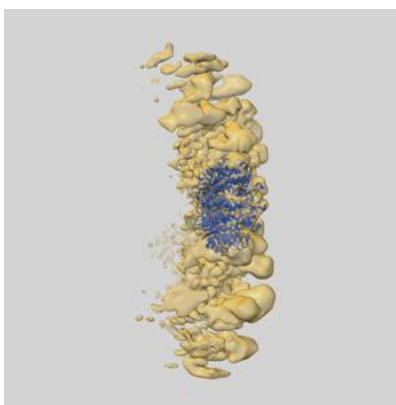
9 Map-model fit [i](#)

This section contains information regarding the fit between EMDB map EMD-12502 and PDB model 7NOH. Per-residue inclusion information can be found in section [3](#) on page [5](#).

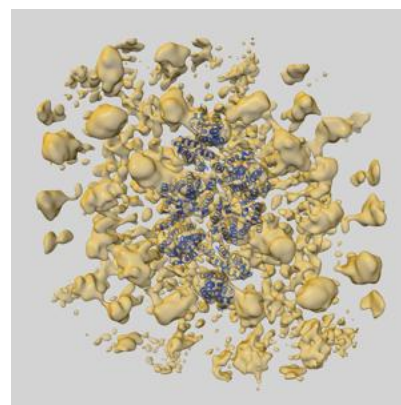
9.1 Map-model overlay [i](#)



X



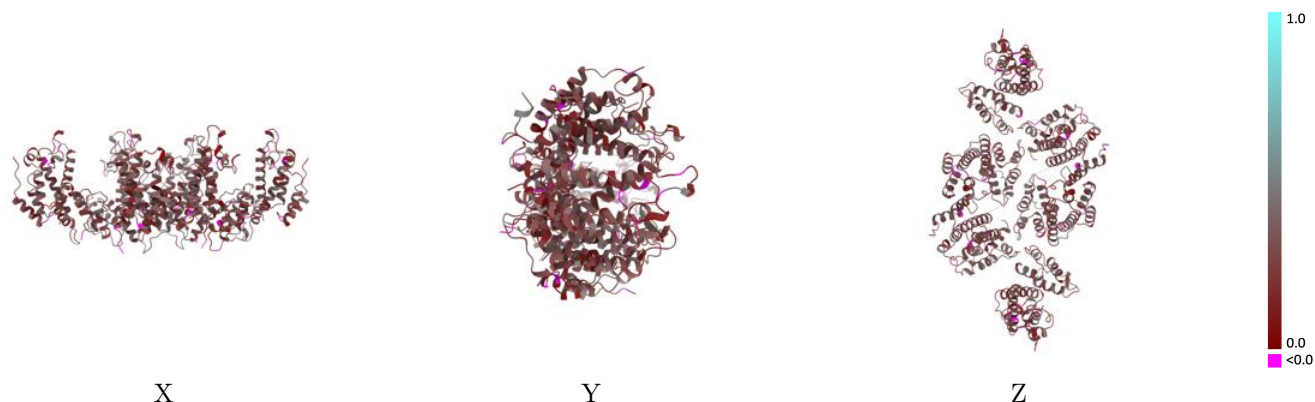
Y



Z

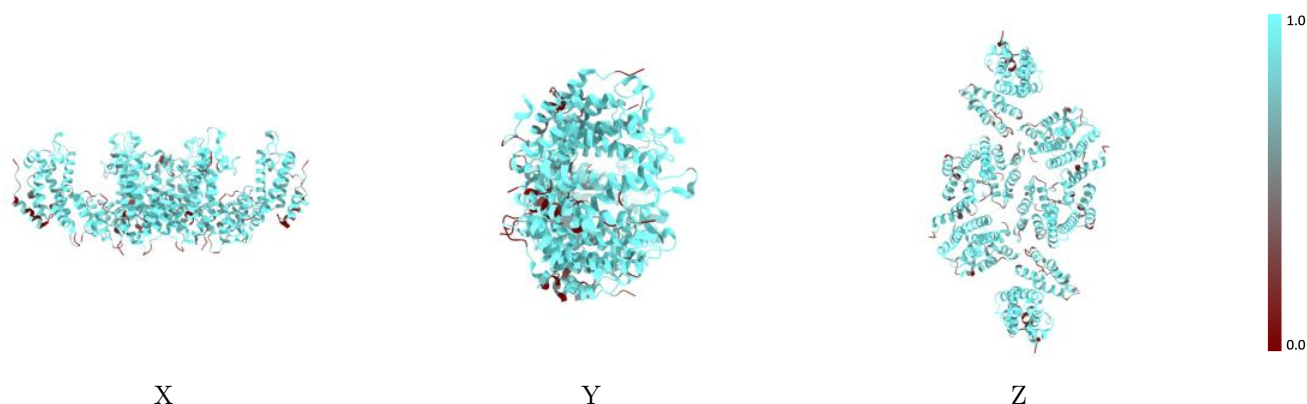
The images above show the 3D surface view of the map at the recommended contour level 4.0 at 50% transparency in yellow overlaid with a ribbon representation of the model coloured in blue. These images allow for the visual assessment of the quality of fit between the atomic model and the map.

9.2 Q-score mapped to coordinate model [i](#)



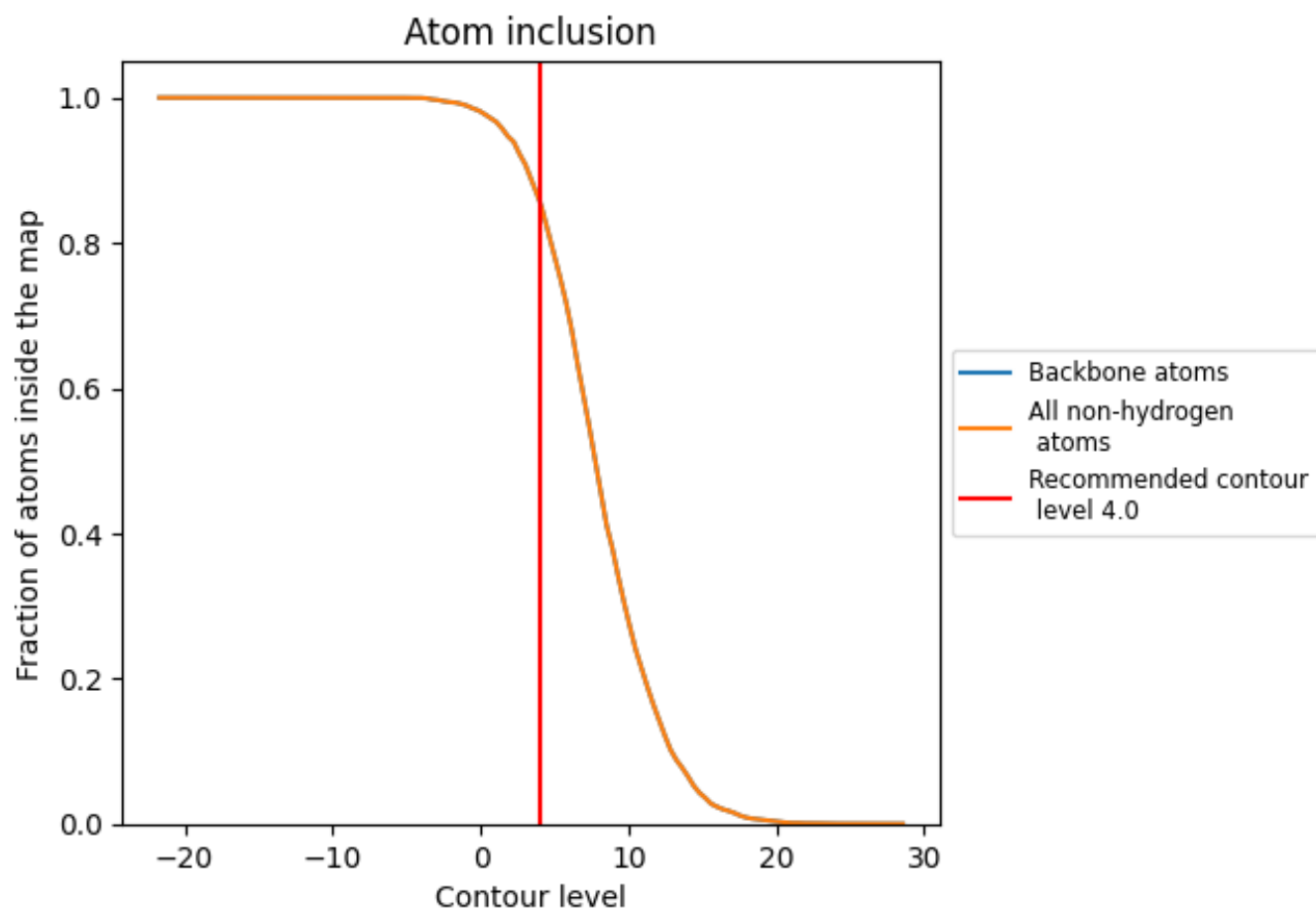
The images above show the model with each residue coloured according to its Q-score. This shows their resolvability in the map with higher Q-score values reflecting better resolvability. Please note: Q-score is calculating the resolvability of atoms, and thus high values are only expected at resolutions at which atoms can be resolved. Low Q-score values may therefore be expected for many entries.

9.3 Atom inclusion mapped to coordinate model [i](#)



The images above show the model with each residue coloured according to its atom inclusion. This shows to what extent they are inside the map at the recommended contour level (4.0).























9.4 Atom inclusion [i](#)



At the recommended contour level, 86% of all backbone atoms, 86% of all non-hydrogen atoms, are inside the map.

9.5 Map-model fit summary

The table lists the average atom inclusion at the recommended contour level (4.0) and Q-score for the entire model and for each chain.

Chain	Atom inclusion	Q-score
All	 0.8575	 0.2550
A	 0.8109	 0.2560
B	 0.8871	 0.2630
C	 0.8723	 0.2630
D	 0.8109	 0.2510
E	 0.8836	 0.2520
F	 0.8885	 0.2630
G	 0.7949	 0.2550
H	 0.8471	 0.2450
I	 0.7981	 0.2540
J	 0.8561	 0.2470

