



Full wwPDB X-ray Structure Validation Report ⓘ

Mar 3, 2024 – 06:37 PM EST

PDB ID : 6NPE
Title : C-abl Kinase domain with the activator(cmpd6), 2-cyano-N-(4-(3,4-dichlorophenyl)thiazol-2-yl)acetamide
Authors : campobasso, N.
Deposited on : 2019-01-17
Resolution : 2.15 Å(reported)

This is a Full wwPDB X-ray Structure Validation Report for a publicly released PDB entry.

We welcome your comments at validation@mail.wwpdb.org

A user guide is available at

<https://www.wwpdb.org/validation/2017/XrayValidationReportHelp>

with specific help available everywhere you see the ⓘ symbol.

The types of validation reports are described at

<http://www.wwpdb.org/validation/2017/FAQs#types>.

The following versions of software and data (see [references ⓘ](#)) were used in the production of this report:

MolProbity : 4.02b-467
Mogul : 1.8.5 (274361), CSD as541be (2020)
Xtriage (Phenix) : 1.13
EDS : 2.36
buster-report : 1.1.7 (2018)
Percentile statistics : 20191225.v01 (using entries in the PDB archive December 25th 2019)
Refmac : 5.8.0158
CCP4 : 7.0.044 (Gargrove)
Ideal geometry (proteins) : Engh & Huber (2001)
Ideal geometry (DNA, RNA) : Parkinson et al. (1996)
Validation Pipeline (wwPDB-VP) : 2.36

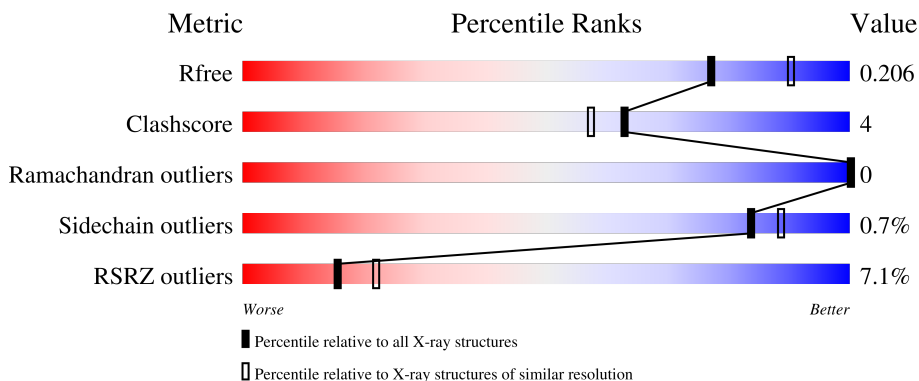
1 Overall quality at a glance

The following experimental techniques were used to determine the structure:

X-RAY DIFFRACTION

The reported resolution of this entry is 2.15 Å.

Percentile scores (ranging between 0-100) for global validation metrics of the entry are shown in the following graphic. The table shows the number of entries on which the scores are based.



Metric	Whole archive (#Entries)	Similar resolution (#Entries, resolution range(Å))
R_{free}	130704	1479 (2.16-2.16)
Clashscore	141614	1585 (2.16-2.16)
Ramachandran outliers	138981	1560 (2.16-2.16)
Sidechain outliers	138945	1559 (2.16-2.16)
RSRZ outliers	127900	1456 (2.16-2.16)

The table below summarises the geometric issues observed across the polymeric chains and their fit to the electron density. The red, orange, yellow and green segments of the lower bar indicate the fraction of residues that contain outliers for ≥ 3 , 2, 1 and 0 types of geometric quality criteria respectively. A grey segment represents the fraction of residues that are not modelled. The numeric value for each fraction is indicated below the corresponding segment, with a dot representing fractions $\leq 5\%$. The upper red bar (where present) indicates the fraction of residues that have poor fit to the electron density. The numeric value is given above the bar.

Mol	Chain	Length	Quality of chain
1	A	298	 2% 83% 6% 11%
1	B	298	 10% 80% 6% 14%

2 Entry composition i

There are 6 unique types of molecules in this entry. The entry contains 4564 atoms, of which 0 are hydrogens and 0 are deuteriums.

In the tables below, the ZeroOcc column contains the number of atoms modelled with zero occupancy, the AltConf column contains the number of residues with at least one atom in alternate conformation and the Trace column contains the number of residues modelled with at most 2 atoms.

- Molecule 1 is a protein called Tyrosine-protein kinase ABL1.

Mol	Chain	Residues	Atoms					ZeroOcc	AltConf	Trace
			Total	C	N	O	S			
1	A	264	2136	1381	346	393	16	0	1	0
1	B	256	2089	1349	336	389	15	0	1	0

There are 28 discrepancies between the modelled and reference sequences:

Chain	Residue	Modelled	Actual	Comment	Reference
A	234	MET	-	expression tag	UNP P00519
A	235	HIS	-	expression tag	UNP P00519
A	236	HIS	-	expression tag	UNP P00519
A	237	HIS	-	expression tag	UNP P00519
A	238	HIS	-	expression tag	UNP P00519
A	239	HIS	-	expression tag	UNP P00519
A	240	HIS	-	expression tag	UNP P00519
A	241	GLU	-	expression tag	UNP P00519
A	242	ASN	-	expression tag	UNP P00519
A	243	LEU	-	expression tag	UNP P00519
A	244	TYR	-	expression tag	UNP P00519
A	245	PHE	-	expression tag	UNP P00519
A	246	GLN	-	expression tag	UNP P00519
A	247	GLY	-	expression tag	UNP P00519
B	234	MET	-	expression tag	UNP P00519
B	235	HIS	-	expression tag	UNP P00519
B	236	HIS	-	expression tag	UNP P00519
B	237	HIS	-	expression tag	UNP P00519
B	238	HIS	-	expression tag	UNP P00519
B	239	HIS	-	expression tag	UNP P00519
B	240	HIS	-	expression tag	UNP P00519
B	241	GLU	-	expression tag	UNP P00519
B	242	ASN	-	expression tag	UNP P00519
B	243	LEU	-	expression tag	UNP P00519
B	244	TYR	-	expression tag	UNP P00519

Continued on next page...

Continued from previous page...

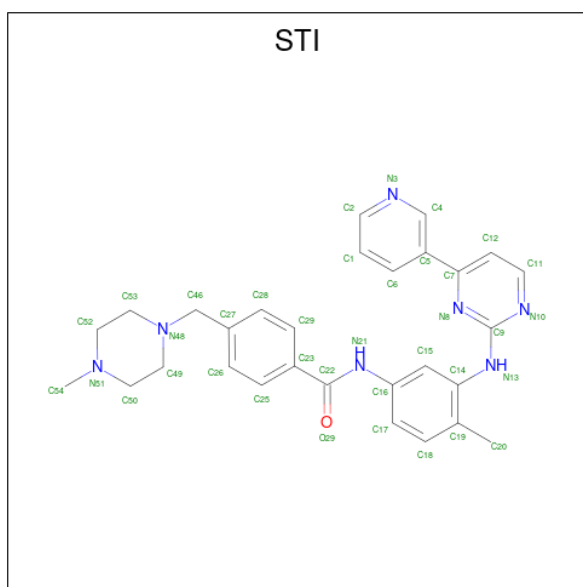
Chain	Residue	Modelled	Actual	Comment	Reference
B	245	PHE	-	expression tag	UNP P00519
B	246	GLN	-	expression tag	UNP P00519
B	247	GLY	-	expression tag	UNP P00519

- Molecule 2 is SULFATE ION (three-letter code: SO4) (formula: O₄S).



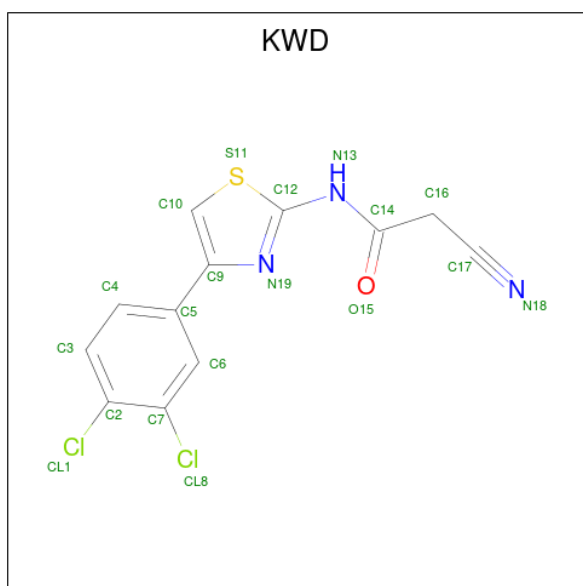
Mol	Chain	Residues	Atoms			ZeroOcc	AltConf
2	A	1	Total	O	S	0	0
			5	4	1		
2	A	1	Total	O	S	0	0
			5	4	1		
2	B	1	Total	O	S	0	0
			5	4	1		
2	B	1	Total	O	S	0	0
			5	4	1		

- Molecule 3 is 4-(4-METHYL-PIPERAZIN-1-YLMETHYL)-N-[4-METHYL-3-(4-PYRIDIN-3-YL-PYRIMIDIN-2-YLAMINO)-PHENYL]-BENZAMIDE (three-letter code: STI) (formula: C₂₉H₃₁N₇O).



Mol	Chain	Residues	Atoms				ZeroOcc	AltConf
			Total	C	N	O		
3	A	1	37	29	7	1	0	0
3	B	1	37	29	7	1	0	0

- Molecule 4 is 2-cyano- {N}-[4-(3,4-dichlorophenyl)-1,3-thiazol-2-yl]ethanamide (three-letter code: KWD) (formula: C₁₂H₇Cl₂N₃OS) (labeled as "Ligand of Interest" by depositor).



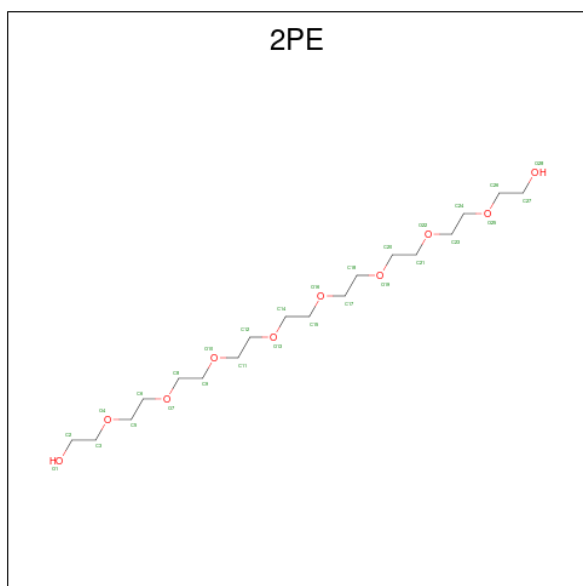
Mol	Chain	Residues	Atoms					ZeroOcc	AltConf	
			Total	C	Cl	N	O			S
4	A	1	19	12	2	3	1	1	0	0

Continued on next page...

Continued from previous page...

Mol	Chain	Residues	Atoms					ZeroOcc	AltConf	
			Total	C	Cl	N	O			S
4	B	1	19	12	2	3	1	1	0	0

- Molecule 5 is NONAETHYLENE GLYCOL (three-letter code: 2PE) (formula: $C_{18}H_{38}O_{10}$).



Mol	Chain	Residues	Atoms			ZeroOcc	AltConf
			Total	C	O		
5	B	1	28	18	10	0	0

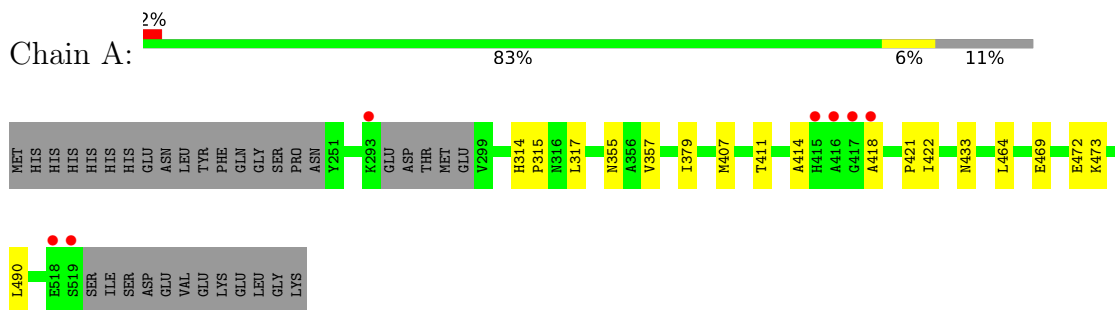
- Molecule 6 is water.

Mol	Chain	Residues	Atoms		ZeroOcc	AltConf
			Total	O		
6	A	97	97	97	0	0
6	B	82	82	82	0	0

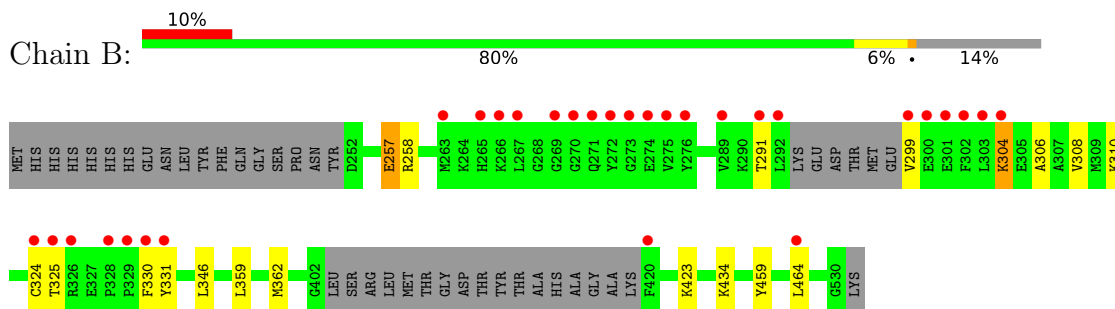
3 Residue-property plots [i](#)

These plots are drawn for all protein, RNA, DNA and oligosaccharide chains in the entry. The first graphic for a chain summarises the proportions of the various outlier classes displayed in the second graphic. The second graphic shows the sequence view annotated by issues in geometry and electron density. Residues are color-coded according to the number of geometric quality criteria for which they contain at least one outlier: green = 0, yellow = 1, orange = 2 and red = 3 or more. A red dot above a residue indicates a poor fit to the electron density ($RSRZ > 2$). Stretches of 2 or more consecutive residues without any outlier are shown as a green connector. Residues present in the sample, but not in the model, are shown in grey.

- Molecule 1: Tyrosine-protein kinase ABL1



- Molecule 1: Tyrosine-protein kinase ABL1



4 Data and refinement statistics

Property	Value	Source
Space group	P 21 21 21	Depositor
Cell constants a, b, c, α , β , γ	74.71Å 95.02Å 115.70Å 90.00° 90.00° 90.00°	Depositor
Resolution (Å)	49.40 – 2.15 49.41 – 2.00	Depositor EDS
% Data completeness (in resolution range)	96.0 (49.40-2.15) 96.0 (49.41-2.00)	Depositor EDS
R_{merge}	(Not available)	Depositor
R_{sym}	(Not available)	Depositor
$\langle I/\sigma(I) \rangle$ ¹	2.20 (at 2.00Å)	Xtrriage
Refinement program	PHENIX 1.11.1_2575	Depositor
R, R_{free}	0.186 , 0.212 0.181 , 0.206	Depositor DCC
R_{free} test set	2710 reflections (5.00%)	wwPDB-VP
Wilson B-factor (Å ²)	31.8	Xtrriage
Anisotropy	0.415	Xtrriage
Bulk solvent k_{sol} (e/Å ³), B_{sol} (Å ²)	0.37 , 52.0	EDS
L-test for twinning ²	$\langle L \rangle = 0.49$, $\langle L^2 \rangle = 0.32$	Xtrriage
Estimated twinning fraction	No twinning to report.	Xtrriage
F_o, F_c correlation	0.96	EDS
Total number of atoms	4564	wwPDB-VP
Average B, all atoms (Å ²)	38.0	wwPDB-VP

Xtrriage's analysis on translational NCS is as follows: *The largest off-origin peak in the Patterson function is 5.90% of the height of the origin peak. No significant pseudotranslation is detected.*

¹Intensities estimated from amplitudes.

²Theoretical values of $\langle |L| \rangle$, $\langle L^2 \rangle$ for acentric reflections are 0.5, 0.333 respectively for untwinned datasets, and 0.375, 0.2 for perfectly twinned datasets.

5 Model quality [i](#)

5.1 Standard geometry [i](#)

Bond lengths and bond angles in the following residue types are not validated in this section: 2PE, STI, SO4, KWD

The Z score for a bond length (or angle) is the number of standard deviations the observed value is removed from the expected value. A bond length (or angle) with $|Z| > 5$ is considered an outlier worth inspection. RMSZ is the root-mean-square of all Z scores of the bond lengths (or angles).

Mol	Chain	Bond lengths		Bond angles	
		RMSZ	# Z >5	RMSZ	# Z >5
1	A	0.41	0/2191	0.55	0/2967
1	B	0.40	0/2141	0.52	0/2898
All	All	0.41	0/4332	0.53	0/5865

There are no bond length outliers.

There are no bond angle outliers.

There are no chirality outliers.

There are no planarity outliers.

5.2 Too-close contacts [i](#)

In the following table, the Non-H and H(model) columns list the number of non-hydrogen atoms and hydrogen atoms in the chain respectively. The H(added) column lists the number of hydrogen atoms added and optimized by MolProbity. The Clashes column lists the number of clashes within the asymmetric unit, whereas Symm-Clashes lists symmetry-related clashes.

Mol	Chain	Non-H	H(model)	H(added)	Clashes	Symm-Clashes
1	A	2136	0	2078	13	0
1	B	2089	0	2030	19	0
2	A	10	0	0	0	0
2	B	10	0	0	0	0
3	A	37	0	31	3	0
3	B	37	0	31	1	0
4	A	19	0	0	1	0
4	B	19	0	0	1	0
5	B	28	0	38	6	0
6	A	97	0	0	0	0
6	B	82	0	0	2	0
All	All	4564	0	4208	37	0

The all-atom clashscore is defined as the number of clashes found per 1000 atoms (including hydrogen atoms). The all-atom clashscore for this structure is 4.

All (37) close contacts within the same asymmetric unit are listed below, sorted by their clash magnitude.

Atom-1	Atom-2	Interatomic distance (Å)	Clash overlap (Å)
1:B:434:LYS:HZ1	5:B:605:2PE:H172	1.33	0.94
1:A:379:ILE:O	3:A:603:STI:H501	1.81	0.79
4:B:604:KWD:S11	4:B:604:KWD:O15	2.55	0.65
1:B:434:LYS:NZ	5:B:605:2PE:H172	2.13	0.59
1:B:434:LYS:NZ	5:B:605:2PE:H61	2.18	0.57
1:B:325:THR:HA	1:B:330:PHE:HD2	1.69	0.57
1:B:434:LYS:HZ3	5:B:605:2PE:H61	1.69	0.57
1:B:464:LEU:HD12	6:B:741:HOH:O	2.05	0.56
3:B:603:STI:H151	3:B:603:STI:O29	2.07	0.55
1:A:379:ILE:O	3:A:603:STI:C50	2.52	0.55
4:A:604:KWD:O15	4:A:604:KWD:S11	2.68	0.52
1:B:257:GLU:OE1	1:B:258:ARG:N	2.44	0.50
1:B:423:LYS:HD3	1:B:459:TYR:CD1	2.48	0.49
1:B:324:CYS:HB2	1:B:331:TYR:HB2	1.95	0.48
1:B:304:LYS:HE2	1:B:308:VAL:HG23	1.96	0.48
1:A:469:GLU:HG2	1:A:473:LYS:HE2	1.96	0.47
1:B:299:VAL:N	6:B:707:HOH:O	2.47	0.47
1:B:423:LYS:HD3	1:B:459:TYR:HD1	1.78	0.47
5:B:605:2PE:H121	5:B:605:2PE:H272	1.97	0.46
3:A:603:STI:H151	3:A:603:STI:O29	2.15	0.46
1:B:325:THR:HA	1:B:330:PHE:CD2	2.50	0.45
1:B:304:LYS:HA	1:B:304:LYS:HD2	1.65	0.43
1:A:472:GLU:HG2	1:A:472:GLU:O	2.18	0.43
1:A:355:ASN:OD1	1:A:357:VAL:HG12	2.18	0.43
1:A:422:ILE:HB	1:A:464:LEU:HD22	2.02	0.42
1:A:407:MET:HE3	1:A:407:MET:HB3	1.96	0.42
1:A:490:LEU:HD12	1:A:490:LEU:HA	1.92	0.42
1:B:434:LYS:NZ	5:B:605:2PE:H141	2.35	0.42
1:B:346:LEU:HD21	1:B:362:MET:HE1	2.02	0.41
1:A:314:HIS:CG	1:A:315:PRO:HD2	2.56	0.41
1:A:414:ALA:HA	1:A:418:ALA:O	2.21	0.41
1:B:291:THR:HG22	1:B:331:TYR:CD2	2.56	0.41
1:A:411:THR:O	1:A:421:PRO:HA	2.20	0.41
1:B:306:ALA:O	1:B:310:LYS:HG3	2.20	0.41
1:A:314:HIS:HB3	1:A:317:LEU:HD12	2.03	0.41
1:A:469:GLU:CG	1:A:473:LYS:HE2	2.51	0.40
1:B:359:LEU:HA	1:B:362:MET:HE2	2.02	0.40

There are no symmetry-related clashes.

5.3 Torsion angles [i](#)

5.3.1 Protein backbone [i](#)

In the following table, the Percentiles column shows the percent Ramachandran outliers of the chain as a percentile score with respect to all X-ray entries followed by that with respect to entries of similar resolution.

The Analysed column shows the number of residues for which the backbone conformation was analysed, and the total number of residues.

Mol	Chain	Analysed	Favoured	Allowed	Outliers	Percentiles	
1	A	261/298 (88%)	254 (97%)	7 (3%)	0	100	100
1	B	251/298 (84%)	244 (97%)	7 (3%)	0	100	100
All	All	512/596 (86%)	498 (97%)	14 (3%)	0	100	100

There are no Ramachandran outliers to report.

5.3.2 Protein sidechains [i](#)

In the following table, the Percentiles column shows the percent sidechain outliers of the chain as a percentile score with respect to all X-ray entries followed by that with respect to entries of similar resolution.

The Analysed column shows the number of residues for which the sidechain conformation was analysed, and the total number of residues.

Mol	Chain	Analysed	Rotameric	Outliers	Percentiles	
1	A	225/262 (86%)	224 (100%)	1 (0%)	91	93
1	B	224/262 (86%)	222 (99%)	2 (1%)	78	83
All	All	449/524 (86%)	446 (99%)	3 (1%)	84	89

All (3) residues with a non-rotameric sidechain are listed below:

Mol	Chain	Res	Type
1	A	433	ASN
1	B	257	GLU
1	B	304	LYS

Sometimes sidechains can be flipped to improve hydrogen bonding and reduce clashes. There are

no such sidechains identified.

5.3.3 RNA [i](#)

There are no RNA molecules in this entry.

5.4 Non-standard residues in protein, DNA, RNA chains [i](#)

There are no non-standard protein/DNA/RNA residues in this entry.

5.5 Carbohydrates [i](#)

There are no monosaccharides in this entry.

5.6 Ligand geometry [i](#)

9 ligands are modelled in this entry.

In the following table, the Counts columns list the number of bonds (or angles) for which Mogul statistics could be retrieved, the number of bonds (or angles) that are observed in the model and the number of bonds (or angles) that are defined in the Chemical Component Dictionary. The Link column lists molecule types, if any, to which the group is linked. The Z score for a bond length (or angle) is the number of standard deviations the observed value is removed from the expected value. A bond length (or angle) with $|Z| > 2$ is considered an outlier worth inspection. RMSZ is the root-mean-square of all Z scores of the bond lengths (or angles).

Mol	Type	Chain	Res	Link	Bond lengths			Bond angles		
					Counts	RMSZ	# Z > 2	Counts	RMSZ	# Z > 2
4	KWD	B	604	-	17,20,20	2.01	3 (17%)	21,27,27	2.77	7 (33%)
2	SO4	B	601	-	4,4,4	0.15	0	6,6,6	0.07	0
3	STI	B	603	-	40,41,41	1.01	2 (5%)	51,56,56	1.56	8 (15%)
3	STI	A	603	-	40,41,41	0.90	1 (2%)	51,56,56	1.39	5 (9%)
4	KWD	A	604	-	17,20,20	1.80	2 (11%)	21,27,27	2.57	6 (28%)
2	SO4	B	602	-	4,4,4	0.26	0	6,6,6	0.50	0
2	SO4	A	601	-	4,4,4	0.16	0	6,6,6	0.13	0
5	2PE	B	605	-	27,27,27	0.56	0	26,26,26	1.08	2 (7%)
2	SO4	A	602	-	4,4,4	0.15	0	6,6,6	0.14	0

In the following table, the Chirals column lists the number of chiral outliers, the number of chiral centers analysed, the number of these observed in the model and the number defined in the Chemical Component Dictionary. Similar counts are reported in the Torsion and Rings columns. '-' means no outliers of that kind were identified.

Mol	Type	Chain	Res	Link	Chirals	Torsions	Rings
4	KWD	B	604	-	-	0/8/11/11	0/2/2/2
3	STI	B	603	-	-	1/16/30/30	0/5/5/5
3	STI	A	603	-	-	2/16/30/30	0/5/5/5
4	KWD	A	604	-	-	0/8/11/11	0/2/2/2
5	2PE	B	605	-	-	14/25/25/25	-

All (8) bond length outliers are listed below:

Mol	Chain	Res	Type	Atoms	Z	Observed(Å)	Ideal(Å)
4	B	604	KWD	C10-S11	6.85	1.81	1.70
4	A	604	KWD	C10-S11	6.23	1.80	1.70
4	B	604	KWD	C9-N19	3.04	1.47	1.37
4	A	604	KWD	C9-N19	2.70	1.46	1.37
4	B	604	KWD	C16-C14	-2.59	1.49	1.52
3	B	603	STI	C12-C7	-2.45	1.37	1.41
3	B	603	STI	C7-N8	-2.36	1.33	1.37
3	A	603	STI	C9-N13	2.12	1.40	1.36

All (28) bond angle outliers are listed below:

Mol	Chain	Res	Type	Atoms	Z	Observed(°)	Ideal(°)
4	A	604	KWD	C9-C10-S11	-8.66	101.15	111.79
4	B	604	KWD	C9-C10-S11	-8.30	101.60	111.79
4	B	604	KWD	C10-C9-C5	-6.27	120.73	129.44
4	A	604	KWD	C10-C9-C5	-5.52	121.77	129.44
3	A	603	STI	C50-N51-C52	4.79	116.23	109.52
3	B	603	STI	C11-C12-C7	-4.77	115.24	119.31
3	A	603	STI	C11-C12-C7	-3.78	116.08	119.31
4	B	604	KWD	C6-C5-C9	-3.68	115.25	120.59
3	B	603	STI	C53-C52-N51	-3.46	106.89	110.80
3	B	603	STI	C18-C19-C14	3.41	120.66	117.44
3	A	603	STI	C49-N48-C53	2.96	115.50	108.83
3	B	603	STI	C50-N51-C52	2.88	113.55	109.52
3	A	603	STI	C54-N51-C52	2.79	114.83	110.66
4	B	604	KWD	C12-N13-C14	-2.73	122.17	129.54
3	A	603	STI	C18-C19-C14	2.68	119.97	117.44
4	B	604	KWD	C4-C5-C6	2.58	121.82	118.16
4	A	604	KWD	C6-C5-C9	-2.57	116.87	120.59
5	B	605	2PE	C17-O16-C15	2.56	124.38	113.29
4	A	604	KWD	C4-C5-C6	2.50	121.70	118.16
3	B	603	STI	C49-C50-N51	-2.47	108.01	110.80
5	B	605	2PE	C20-O19-C18	2.36	123.53	113.29
4	B	604	KWD	C17-C16-C14	-2.35	106.41	111.10

Continued on next page...

Continued from previous page...

Mol	Chain	Res	Type	Atoms	Z	Observed(°)	Ideal(°)
3	B	603	STI	C14-N13-C9	-2.33	122.59	129.60
3	B	603	STI	C52-C53-N48	-2.32	105.88	110.64
4	A	604	KWD	C12-N13-C14	-2.21	123.58	129.54
3	B	603	STI	C29-C23-C25	2.06	121.52	118.59
4	B	604	KWD	C3-C4-C5	-2.03	118.21	121.13
4	A	604	KWD	C3-C4-C5	-2.03	118.22	121.13

There are no chirality outliers.

All (17) torsion outliers are listed below:

Mol	Chain	Res	Type	Atoms
3	A	603	STI	C15-C14-N13-C9
3	B	603	STI	C15-C14-N13-C9
5	B	605	2PE	C9-C8-O7-C6
5	B	605	2PE	C21-C20-O19-C18
5	B	605	2PE	C14-C15-O16-C17
5	B	605	2PE	C20-C21-O22-C23
5	B	605	2PE	O1-C2-C3-O4
5	B	605	2PE	O19-C20-C21-O22
5	B	605	2PE	O4-C5-C6-O7
5	B	605	2PE	O10-C11-C12-O13
5	B	605	2PE	O22-C23-C24-O25
5	B	605	2PE	O13-C14-C15-O16
5	B	605	2PE	C8-C9-O10-C11
5	B	605	2PE	O7-C8-C9-O10
5	B	605	2PE	C11-C12-O13-C14
5	B	605	2PE	C24-C23-O22-C21
3	A	603	STI	C19-C14-N13-C9

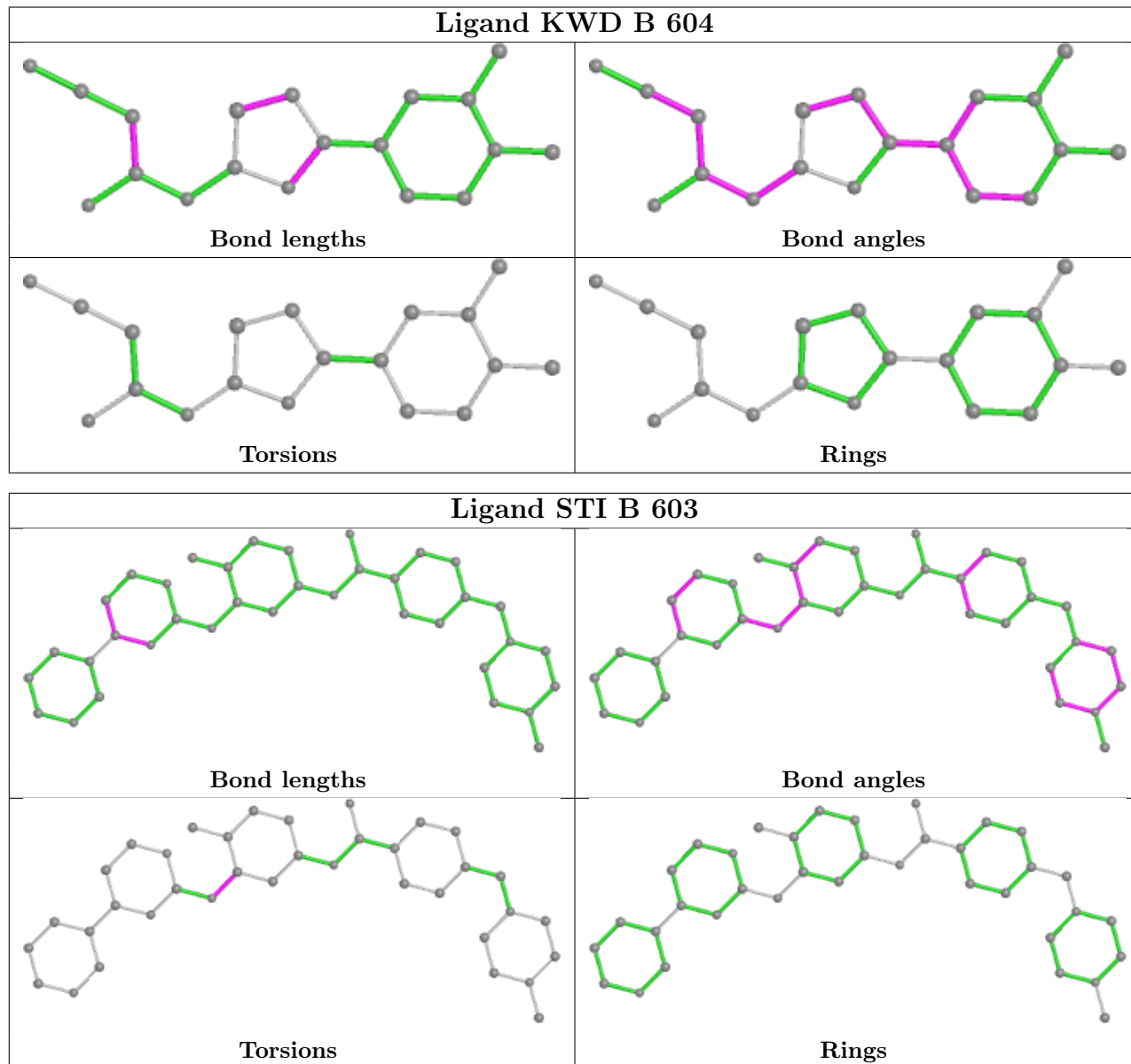
There are no ring outliers.

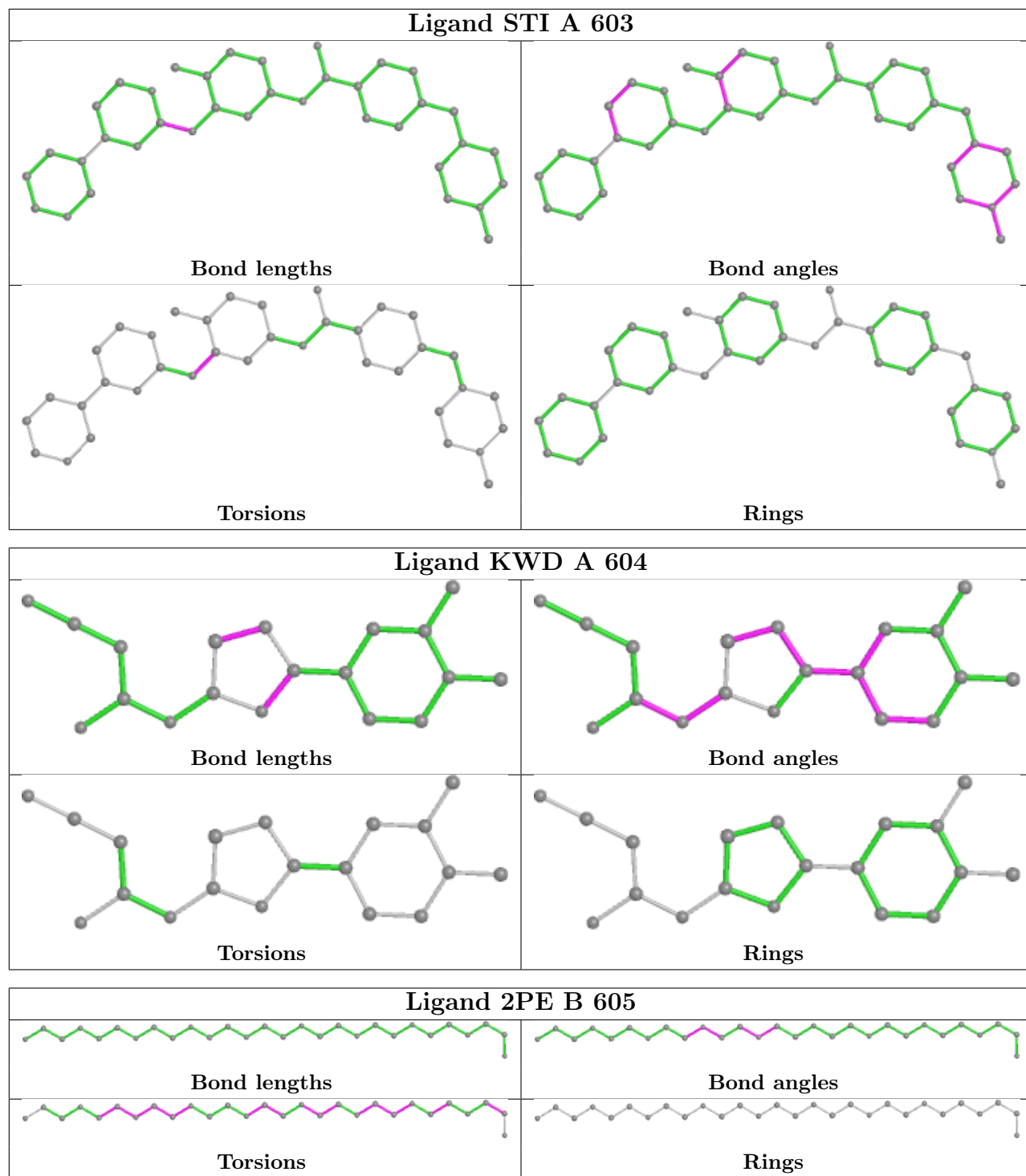
5 monomers are involved in 12 short contacts:

Mol	Chain	Res	Type	Clashes	Symm-Clashes
4	B	604	KWD	1	0
3	B	603	STI	1	0
3	A	603	STI	3	0
4	A	604	KWD	1	0
5	B	605	2PE	6	0

The following is a two-dimensional graphical depiction of Mogul quality analysis of bond lengths, bond angles, torsion angles, and ring geometry for all instances of the Ligand of Interest. In

addition, ligands with molecular weight > 250 and outliers as shown on the validation Tables will also be included. For torsion angles, if less than 5% of the Mogul distribution of torsion angles is within 10 degrees of the torsion angle in question, then that torsion angle is considered an outlier. Any bond that is central to one or more torsion angles identified as an outlier by Mogul will be highlighted in the graph. For rings, the root-mean-square deviation (RMSD) between the ring in question and similar rings identified by Mogul is calculated over all ring torsion angles. If the average RMSD is greater than 60 degrees and the minimal RMSD between the ring in question and any Mogul-identified rings is also greater than 60 degrees, then that ring is considered an outlier. The outliers are highlighted in purple. The color gray indicates Mogul did not find sufficient equivalents in the CSD to analyse the geometry.





5.7 Other polymers [\(i\)](#)

There are no such residues in this entry.

5.8 Polymer linkage issues

There are no chain breaks in this entry.

6 Fit of model and data

6.1 Protein, DNA and RNA chains

In the following table, the column labelled ‘#RSRZ > 2’ contains the number (and percentage) of RSRZ outliers, followed by percent RSRZ outliers for the chain as percentile scores relative to all X-ray entries and entries of similar resolution. The OWAB column contains the minimum, median, 95th percentile and maximum values of the occupancy-weighted average B-factor per residue. The column labelled ‘Q < 0.9’ lists the number of (and percentage) of residues with an average occupancy less than 0.9.

Mol	Chain	Analysed	<RSRZ>	#RSRZ>2	OWAB(Å ²)	Q<0.9
1	A	264/298 (88%)	-0.02	7 (2%) 54 63	22, 33, 60, 84	0
1	B	256/298 (85%)	0.43	30 (11%) 4 6	22, 35, 74, 93	0
All	All	520/596 (87%)	0.20	37 (7%) 16 22	22, 34, 70, 93	0

All (37) RSRZ outliers are listed below:

Mol	Chain	Res	Type	RSRZ
1	B	329	PRO	5.4
1	A	417	GLY	5.3
1	B	269	GLY	5.3
1	B	265	HIS	5.2
1	A	416	ALA	5.0
1	B	267	LEU	4.8
1	B	292	LEU	4.5
1	A	418	ALA	4.2
1	B	291	THR	3.9
1	B	330	PHE	3.9
1	B	270	GLY	3.7
1	B	299	VAL	3.3
1	B	300	GLU	3.1
1	B	266	LYS	3.1
1	B	326	ARG	3.1
1	B	289	VAL	3.0
1	B	301	GLU	3.0
1	B	276	TYR	3.0
1	A	293	LYS	3.0
1	B	303	LEU	3.0
1	B	331	TYR	2.9
1	B	273	GLY	2.9
1	B	274	GLU	2.8
1	B	263	MET	2.6

Continued on next page...

Continued from previous page...

Mol	Chain	Res	Type	RSRZ
1	B	302	PHE	2.6
1	B	420	PHE	2.6
1	B	328	PRO	2.6
1	A	518	GLU	2.6
1	B	304	LYS	2.4
1	B	271	GLN	2.4
1	B	325	THR	2.3
1	B	272	TYR	2.3
1	A	519	SER	2.3
1	A	415	HIS	2.2
1	B	324	CYS	2.1
1	B	275	VAL	2.1
1	B	464	LEU	2.0

6.2 Non-standard residues in protein, DNA, RNA chains [i](#)

There are no non-standard protein/DNA/RNA residues in this entry.

6.3 Carbohydrates [i](#)

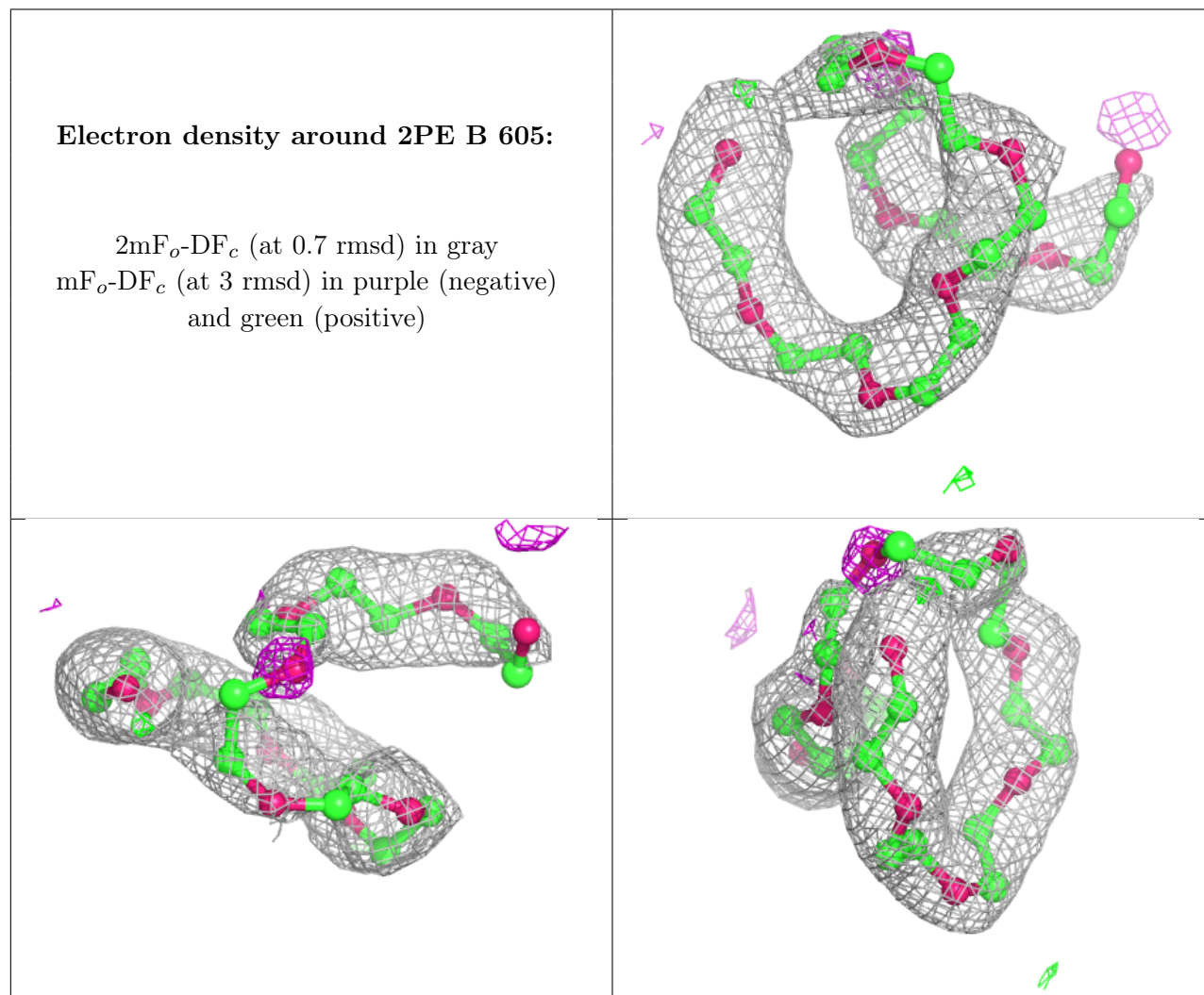
There are no monosaccharides in this entry.

6.4 Ligands [i](#)

In the following table, the Atoms column lists the number of modelled atoms in the group and the number defined in the chemical component dictionary. The B-factors column lists the minimum, median, 95th percentile and maximum values of B factors of atoms in the group. The column labelled 'Q< 0.9' lists the number of atoms with occupancy less than 0.9.

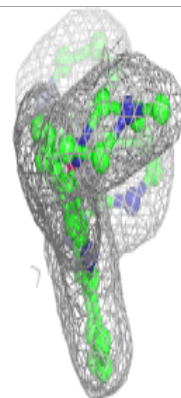
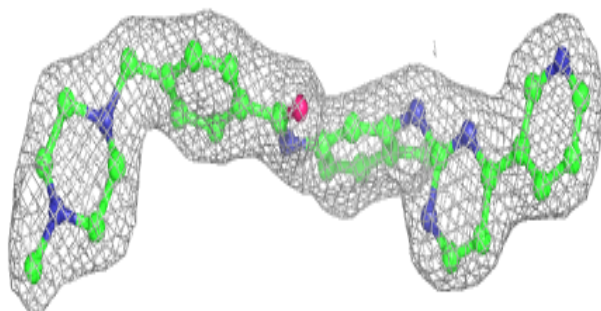
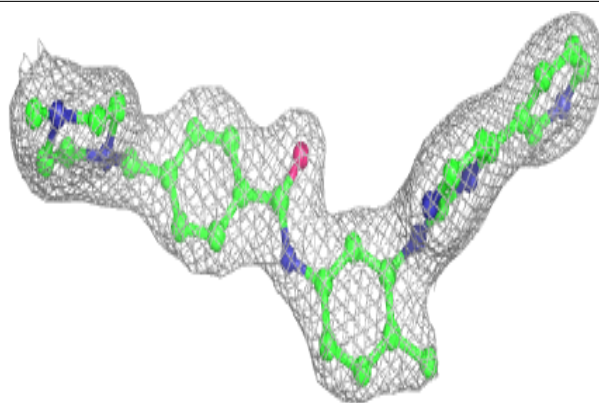
Mol	Type	Chain	Res	Atoms	RSCC	RSR	B-factors(Å ²)	Q<0.9
2	SO4	B	601	5/5	0.78	0.30	83,85,101,109	0
5	2PE	B	605	28/28	0.82	0.22	46,60,74,79	0
2	SO4	B	602	5/5	0.88	0.14	28,46,55,81	0
3	STI	B	603	37/37	0.93	0.15	35,43,48,50	0
4	KWD	B	604	19/19	0.94	0.15	31,39,57,64	0
2	SO4	A	602	5/5	0.94	0.09	70,74,85,91	0
4	KWD	A	604	19/19	0.95	0.12	31,36,48,50	0
3	STI	A	603	37/37	0.96	0.10	23,27,34,42	0
2	SO4	A	601	5/5	0.98	0.10	46,48,57,62	0

The following is a graphical depiction of the model fit to experimental electron density of all instances of the Ligand of Interest. In addition, ligands with molecular weight > 250 and outliers as shown on the geometry validation Tables will also be included. Each fit is shown from different orientation to approximate a three-dimensional view.

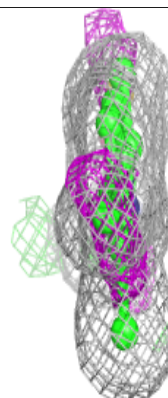
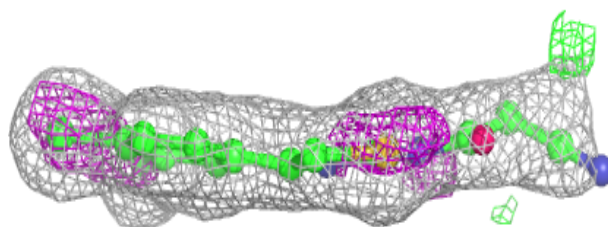
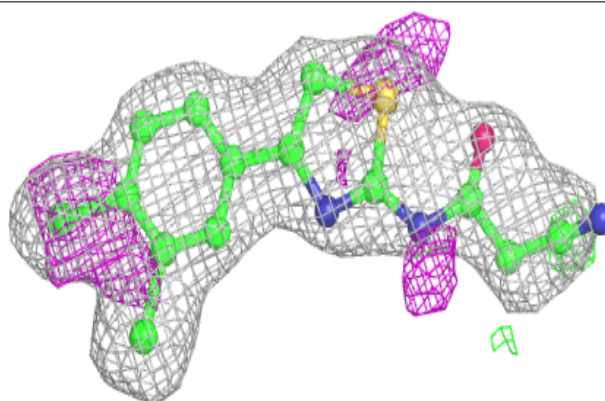


Electron density around STI B 603:

$2mF_o-DF_c$ (at 0.7 rmsd) in gray
 mF_o-DF_c (at 3 rmsd) in purple (negative)
and green (positive)

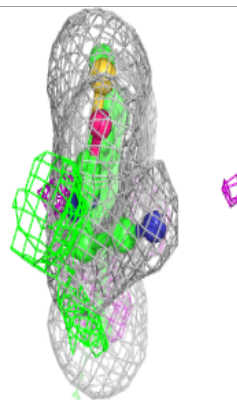
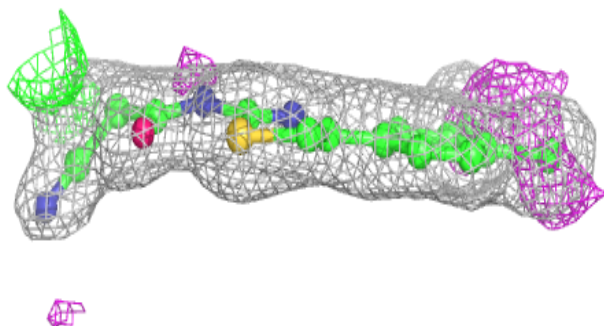
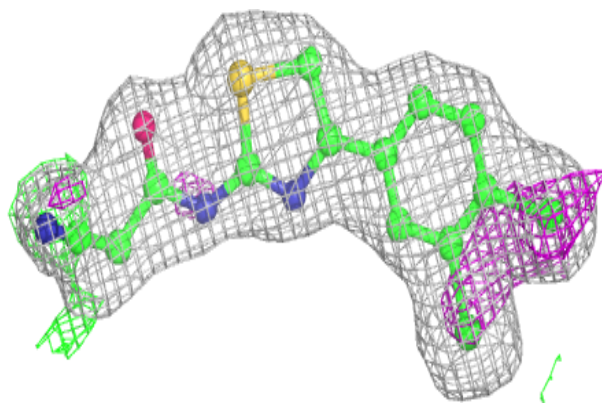
**Electron density around KWD B 604:**

$2mF_o-DF_c$ (at 0.7 rmsd) in gray
 mF_o-DF_c (at 3 rmsd) in purple (negative)
and green (positive)

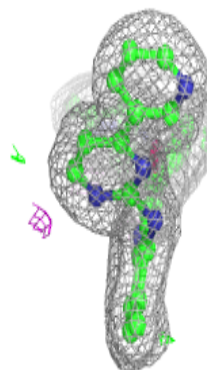
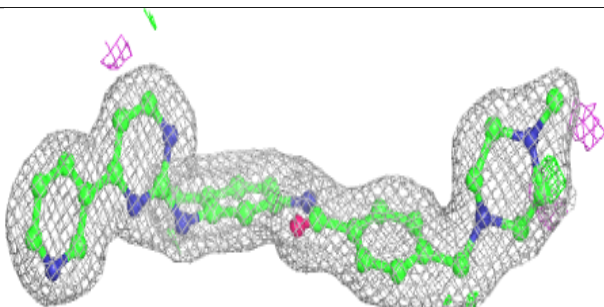
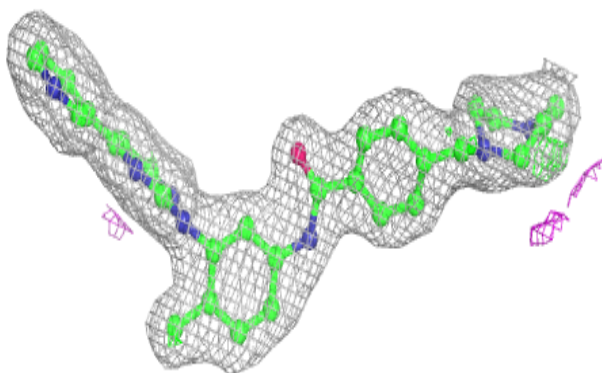


Electron density around KWD A 604:

$2mF_o-DF_c$ (at 0.7 rmsd) in gray
 mF_o-DF_c (at 3 rmsd) in purple (negative)
and green (positive)

**Electron density around STI A 603:**

$2mF_o-DF_c$ (at 0.7 rmsd) in gray
 mF_o-DF_c (at 3 rmsd) in purple (negative)
and green (positive)



6.5 Other polymers [i](#)

There are no such residues in this entry.