



Full wwPDB EM Validation Report ⓘ

Nov 7, 2022 – 02:24 AM EST

PDB ID : 6NPH
EMDB ID : EMD-0470
Title : Structure of NKCC1 TM domain
Authors : Feng, L.; Liao, M.F.; Orlando, B.; Zhang, J.R.
Deposited on : 2019-01-17
Resolution : 2.90 Å (reported)

This is a Full wwPDB EM Validation Report for a publicly released PDB entry.

We welcome your comments at validation@mail.wwpdb.org

A user guide is available at

<https://www.wwpdb.org/validation/2017/EMValidationReportHelp>

with specific help available everywhere you see the ⓘ symbol.

The types of validation reports are described at

<http://www.wwpdb.org/validation/2017/FAQs#types>.

The following versions of software and data (see [references ⓘ](#)) were used in the production of this report:

EMDB validation analysis : 0.0.1.dev43
Mogul : 1.8.5 (274361), CSD as541be (2020)
MolProbity : 4.02b-467
buster-report : 1.1.7 (2018)
Percentile statistics : 20191225.v01 (using entries in the PDB archive December 25th 2019)
MapQ : 1.9.9
Ideal geometry (proteins) : Engh & Huber (2001)
Ideal geometry (DNA, RNA) : Parkinson et al. (1996)
Validation Pipeline (wwPDB-VP) : 2.31.2

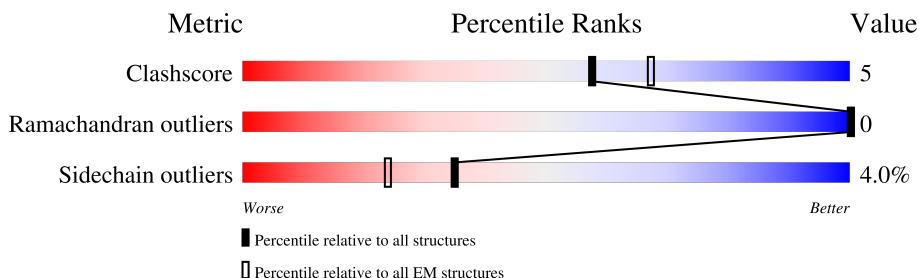
1 Overall quality at a glance

The following experimental techniques were used to determine the structure:

ELECTRON MICROSCOPY

The reported resolution of this entry is 2.90 Å.

Percentile scores (ranging between 0-100) for global validation metrics of the entry are shown in the following graphic. The table shows the number of entries on which the scores are based.



Metric	Whole archive (#Entries)	EM structures (#Entries)
Clashscore	158937	4297
Ramachandran outliers	154571	4023
Sidechain outliers	154315	3826

The table below summarises the geometric issues observed across the polymeric chains and their fit to the map. The red, orange, yellow and green segments of the bar indicate the fraction of residues that contain outliers for ≥ 3 , 2, 1 and 0 types of geometric quality criteria respectively. A grey segment represents the fraction of residues that are not modelled. The numeric value for each fraction is indicated below the corresponding segment, with a dot representing fractions $\leq 5\%$. The upper red bar (where present) indicates the fraction of residues that have poor fit to the EM map (all-atom inclusion $< 40\%$). The numeric value is given above the bar.

Mol	Chain	Length	Quality of chain
1	A	472	
1	B	472	

2 Entry composition [i](#)

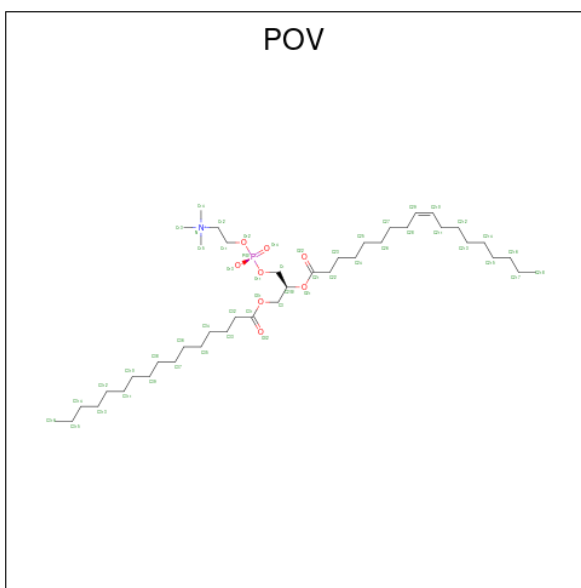
There are 4 unique types of molecules in this entry. The entry contains 7504 atoms, of which 0 are hydrogens and 0 are deuteriums.

In the tables below, the AltConf column contains the number of residues with at least one atom in alternate conformation and the Trace column contains the number of residues modelled with at most 2 atoms.

- Molecule 1 is a protein called Solute carrier family 12 (sodium/potassium/chloride transporter), member 2.

Mol	Chain	Residues	Atoms					AltConf	Trace
			Total	C	N	O	S		
1	A	472	Total 3567	2361	556	627	23	0	0
1	B	472	Total 3567	2361	556	627	23	0	0

- Molecule 2 is (2S)-3-(hexadecanoyloxy)-2-[(9Z)-octadec-9-enoyloxy]propyl 2-(trimethylamm onio)ethyl phosphate (three-letter code: POV) (formula: C₄₂H₈₂NO₈P).



Mol	Chain	Residues	Atoms					AltConf
			Total	C	N	O	P	
2	A	1	Total 156	126	3	24	3	0
2	A	1	Total 156	126	3	24	3	0
2	A	1	Total 156	126	3	24	3	0
2	B	1	Total 208	168	4	32	4	0

Continued on next page...

Continued from previous page...

Mol	Chain	Residues	Atoms					AltConf
2	B	1	Total	C	N	O	P	0
			208	168	4	32	4	
2	B	1	Total	C	N	O	P	0
			208	168	4	32	4	
2	B	1	Total	C	N	O	P	0
			208	168	4	32	4	

- Molecule 3 is POTASSIUM ION (three-letter code: K) (formula: K).

Mol	Chain	Residues	Atoms		AltConf
3	A	1	Total	K	0
			1	1	
3	B	1	Total	K	0
			1	1	

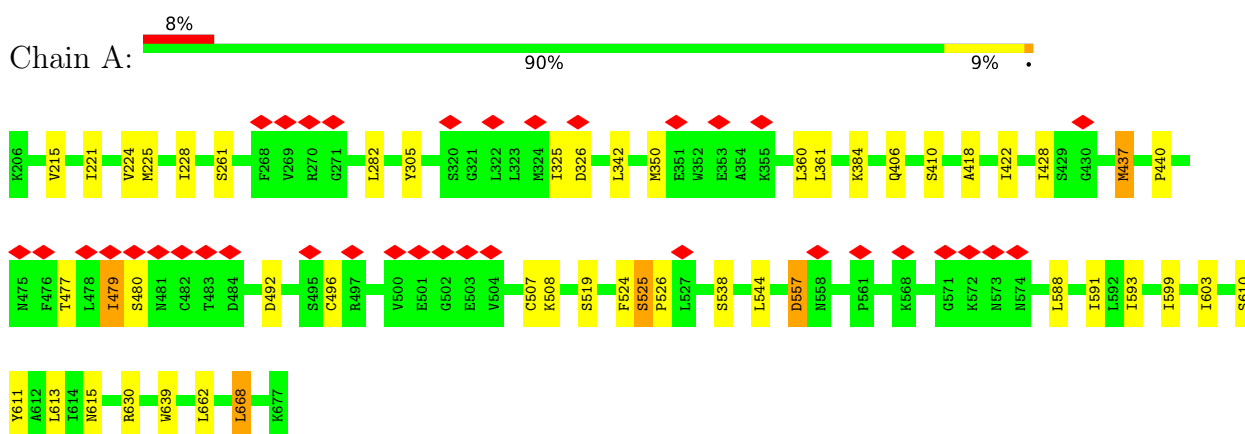
- Molecule 4 is CHLORIDE ION (three-letter code: CL) (formula: Cl).

Mol	Chain	Residues	Atoms		AltConf
4	A	2	Total	Cl	0
			2	2	
4	B	2	Total	Cl	0
			2	2	

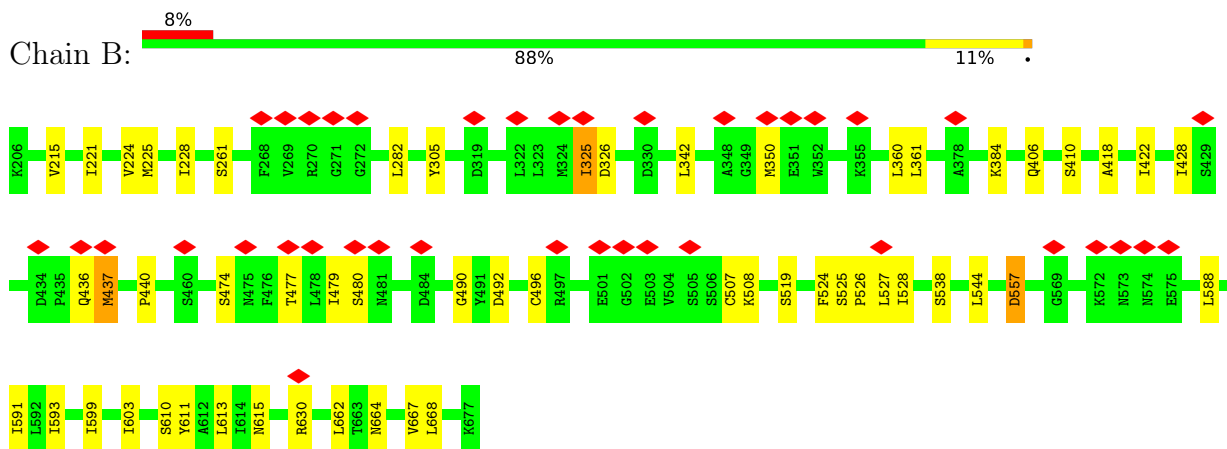
3 Residue-property plots [i](#)

These plots are drawn for all protein, RNA, DNA and oligosaccharide chains in the entry. The first graphic for a chain summarises the proportions of the various outlier classes displayed in the second graphic. The second graphic shows the sequence view annotated by issues in geometry and atom inclusion in map density. Residues are color-coded according to the number of geometric quality criteria for which they contain at least one outlier: green = 0, yellow = 1, orange = 2 and red = 3 or more. A red diamond above a residue indicates a poor fit to the EM map for this residue (all-atom inclusion < 40%). Stretches of 2 or more consecutive residues without any outlier are shown as a green connector. Residues present in the sample, but not in the model, are shown in grey.

- Molecule 1: Solute carrier family 12 (sodium/potassium/chloride transporter), member 2



- Molecule 1: Solute carrier family 12 (sodium/potassium/chloride transporter), member 2



4 Experimental information

Property	Value	Source
EM reconstruction method	SINGLE PARTICLE	Depositor
Imposed symmetry	POINT, C2	Depositor
Number of particles used	63659	Depositor
Resolution determination method	FSC 0.143 CUT-OFF	Depositor
CTF correction method	PHASE FLIPPING AND AMPLITUDE CORRECTION	Depositor
Microscope	FEI TITAN KRIOS	Depositor
Voltage (kV)	300	Depositor
Electron dose ($e^-/\text{\AA}^2$)	53	Depositor
Minimum defocus (nm)	Not provided	
Maximum defocus (nm)	Not provided	
Magnification	Not provided	
Image detector	GATAN K2 QUANTUM (4k x 4k)	Depositor
Maximum map value	0.411	Depositor
Minimum map value	-0.234	Depositor
Average map value	-0.000	Depositor
Map value standard deviation	0.013	Depositor
Recommended contour level	0.0655	Depositor
Map size (Å)	232.09999, 232.09999, 232.09999	wwPDB
Map dimensions	220, 220, 220	wwPDB
Map angles (°)	90.0, 90.0, 90.0	wwPDB
Pixel spacing (Å)	1.055, 1.055, 1.055	Depositor

5 Model quality [i](#)

5.1 Standard geometry [i](#)

Bond lengths and bond angles in the following residue types are not validated in this section: K, CL, POV

The Z score for a bond length (or angle) is the number of standard deviations the observed value is removed from the expected value. A bond length (or angle) with $|Z| > 5$ is considered an outlier worth inspection. RMSZ is the root-mean-square of all Z scores of the bond lengths (or angles).

Mol	Chain	Bond lengths		Bond angles	
		RMSZ	# Z >5	RMSZ	# Z >5
1	A	0.43	0/3653	0.55	0/4969
1	B	0.44	0/3653	0.55	0/4969
All	All	0.43	0/7306	0.55	0/9938

Chiral center outliers are detected by calculating the chiral volume of a chiral center and verifying if the center is modelled as a planar moiety or with the opposite hand. A planarity outlier is detected by checking planarity of atoms in a peptide group, atoms in a mainchain group or atoms of a sidechain that are expected to be planar.

Mol	Chain	#Chirality outliers	#Planarity outliers
1	A	0	1
1	B	0	1
All	All	0	2

There are no bond length outliers.

There are no bond angle outliers.

There are no chirality outliers.

All (2) planarity outliers are listed below:

Mol	Chain	Res	Type	Group
1	A	630	ARG	Sidechain
1	B	630	ARG	Sidechain

5.2 Too-close contacts [i](#)

In the following table, the Non-H and H(model) columns list the number of non-hydrogen atoms and hydrogen atoms in the chain respectively. The H(added) column lists the number of hydrogen atoms added and optimized by MolProbity. The Clashes column lists the number of clashes within the asymmetric unit, whereas Symm-Clashes lists symmetry-related clashes.

Mol	Chain	Non-H	H(model)	H(added)	Clashes	Symm-Clashes
1	A	3567	0	3627	33	0
1	B	3567	0	3627	31	0
2	A	156	0	246	4	0
2	B	208	0	328	13	0
3	A	1	0	0	0	0
3	B	1	0	0	0	0
4	A	2	0	0	0	0
4	B	2	0	0	0	0
All	All	7504	0	7828	76	0

The all-atom clashscore is defined as the number of clashes found per 1000 atoms (including hydrogen atoms). The all-atom clashscore for this structure is 5.

All (76) close contacts within the same asymmetric unit are listed below, sorted by their clash magnitude.

Atom-1	Atom-2	Interatomic distance (Å)	Clash overlap (Å)
1:A:325:ILE:HG22	1:A:326:ASP:H	1.35	0.91
1:B:479:ILE:HD13	1:B:492:ASP:HB2	1.54	0.89
1:A:325:ILE:HG22	1:A:326:ASP:N	1.92	0.84
1:A:479:ILE:HD13	1:A:492:ASP:HB2	1.62	0.80
1:B:479:ILE:CD1	1:B:492:ASP:HB2	2.15	0.76
1:B:519:SER:O	1:B:525:SER:HB3	1.88	0.74
1:B:524:PHE:HD1	1:B:528:ILE:HG12	1.53	0.74
1:A:519:SER:O	1:A:525:SER:HB3	1.89	0.73
1:A:325:ILE:CG2	1:A:326:ASP:H	2.01	0.72
1:A:479:ILE:CD1	1:A:492:ASP:HB2	2.18	0.71
1:B:524:PHE:HE1	1:B:527:LEU:HB3	1.60	0.67
1:B:437:MET:O	1:B:437:MET:HG2	1.94	0.66
1:A:437:MET:HG2	1:A:437:MET:O	1.95	0.66
1:A:524:PHE:CE1	1:A:526:PRO:HG2	2.33	0.63
1:A:557:ASP:N	1:A:557:ASP:OD1	2.36	0.59
1:B:557:ASP:OD1	1:B:557:ASP:N	2.36	0.57
1:B:524:PHE:CE1	1:B:527:LEU:HB3	2.39	0.56
2:B:804:POV:H1	2:B:804:POV:H35A	1.88	0.55
1:A:525:SER:N	1:A:526:PRO:HD2	2.22	0.55
1:A:479:ILE:HG13	1:A:480:SER:N	2.22	0.54
2:B:801:POV:H24	2:B:801:POV:H36	1.90	0.53
2:B:803:POV:H214	2:B:803:POV:H31E	1.92	0.52
1:A:350:MET:SD	1:A:350:MET:N	2.81	0.52
1:B:611:TYR:O	1:B:615:ASN:ND2	2.42	0.52
1:A:611:TYR:O	1:A:615:ASN:ND2	2.42	0.52
1:B:479:ILE:HG13	1:B:480:SER:N	2.25	0.51

Continued on next page...

Continued from previous page...

Atom-1	Atom-2	Interatomic distance (Å)	Clash overlap (Å)
1:A:225:MET:HB2	1:A:418:ALA:HB2	1.92	0.51
1:A:524:PHE:CZ	1:A:526:PRO:HG2	2.46	0.51
1:B:325:ILE:HG22	1:B:326:ASP:H	1.75	0.51
1:B:225:MET:HB2	1:B:418:ALA:HB2	1.92	0.50
1:B:525:SER:N	1:B:526:PRO:HD2	2.26	0.50
1:B:224:VAL:HG23	1:B:305:TYR:HD1	1.77	0.50
1:A:224:VAL:HG23	1:A:305:TYR:HD1	1.77	0.48
2:A:702:POV:H32	2:A:702:POV:H35	1.75	0.47
1:B:350:MET:SD	1:B:350:MET:N	2.81	0.46
1:A:524:PHE:CZ	1:A:526:PRO:CG	2.99	0.45
1:A:215:VAL:HG13	1:A:361:LEU:HD22	1.98	0.45
1:A:221:ILE:HD11	1:A:422:ILE:HG22	1.97	0.45
2:B:801:POV:H36	2:B:801:POV:H27A	1.98	0.45
1:A:428:ILE:HG13	1:A:428:ILE:O	2.16	0.45
1:B:221:ILE:HD11	1:B:422:ILE:HG22	1.97	0.45
1:B:406:GLN:OE1	1:B:410:SER:OG	2.32	0.45
1:A:593:ILE:HB	1:A:599:ILE:HD11	1.99	0.45
1:B:215:VAL:HG13	1:B:361:LEU:HD22	1.98	0.45
1:B:428:ILE:HG13	1:B:428:ILE:O	2.17	0.45
1:A:668:LEU:HD23	1:A:668:LEU:HA	1.77	0.45
1:B:593:ILE:HB	1:B:599:ILE:HD11	1.99	0.44
2:B:801:POV:H214	2:B:801:POV:H21A	1.74	0.44
1:B:664:ASN:HD22	2:B:803:POV:H212	1.83	0.43
1:B:613:LEU:HG	2:B:802:POV:H21G	2.01	0.43
1:B:603:ILE:H	1:B:603:ILE:HG12	1.62	0.43
2:B:802:POV:H32	2:B:802:POV:H35	1.74	0.43
1:A:360:LEU:HD13	1:A:538:SER:HB3	2.01	0.43
1:A:479:ILE:HG13	1:A:480:SER:H	1.84	0.42
1:A:588:LEU:HA	1:A:591:ILE:HD12	2.02	0.42
1:B:224:VAL:HG13	1:B:228:ILE:HD12	2.02	0.42
1:B:588:LEU:HA	1:B:591:ILE:HD12	2.02	0.42
1:B:667:VAL:HG12	2:B:803:POV:H210	2.01	0.42
1:A:406:GLN:OE1	1:A:410:SER:OG	2.32	0.42
2:B:802:POV:H13B	2:B:802:POV:H11A	1.86	0.42
1:A:224:VAL:HG13	1:A:228:ILE:HD12	2.02	0.42
1:B:360:LEU:HD13	1:B:538:SER:HB3	2.01	0.41
1:A:325:ILE:CG2	1:A:326:ASP:N	2.60	0.41
1:A:603:ILE:H	1:A:603:ILE:HG12	1.63	0.41
1:B:474:SER:OG	1:B:490:GLY:O	2.29	0.41
1:B:479:ILE:HG13	1:B:480:SER:H	1.83	0.41
1:A:261:SER:HB3	1:A:440:PRO:HB3	2.03	0.41

Continued on next page...

Continued from previous page...

Atom-1	Atom-2	Interatomic distance (Å)	Clash overlap (Å)
2:A:701:POV:H32	2:A:701:POV:H3	1.92	0.41
1:B:261:SER:HB3	1:B:440:PRO:HB3	2.03	0.41
2:B:803:POV:H27A	2:B:803:POV:H24	1.68	0.41
1:A:428:ILE:O	1:A:428:ILE:CG1	2.70	0.40
1:A:613:LEU:HG	2:A:701:POV:H21G	2.03	0.40
1:B:428:ILE:O	1:B:428:ILE:CG1	2.70	0.40
1:A:639:TRP:HB3	2:A:703:POV:H28	2.04	0.40
2:B:803:POV:H214	2:B:803:POV:H21G	1.87	0.40
2:B:803:POV:H211	2:B:803:POV:H28A	1.74	0.40

There are no symmetry-related clashes.

5.3 Torsion angles [i](#)

5.3.1 Protein backbone [i](#)

In the following table, the Percentiles column shows the percent Ramachandran outliers of the chain as a percentile score with respect to all PDB entries followed by that with respect to all EM entries.

The Analysed column shows the number of residues for which the backbone conformation was analysed, and the total number of residues.

Mol	Chain	Analysed	Favoured	Allowed	Outliers	Percentiles	
1	A	470/472 (100%)	433 (92%)	37 (8%)	0	100	100
1	B	470/472 (100%)	433 (92%)	37 (8%)	0	100	100
All	All	940/944 (100%)	866 (92%)	74 (8%)	0	100	100

There are no Ramachandran outliers to report.

5.3.2 Protein sidechains [i](#)

In the following table, the Percentiles column shows the percent sidechain outliers of the chain as a percentile score with respect to all PDB entries followed by that with respect to all EM entries.

The Analysed column shows the number of residues for which the sidechain conformation was analysed, and the total number of residues.

Mol	Chain	Analysed	Rotameric	Outliers	Percentiles	
1	A	375/375 (100%)	360 (96%)	15 (4%)	31	65
1	B	375/375 (100%)	360 (96%)	15 (4%)	31	65
All	All	750/750 (100%)	720 (96%)	30 (4%)	35	65

All (30) residues with a non-rotameric sidechain are listed below:

Mol	Chain	Res	Type
1	A	282	LEU
1	A	342	LEU
1	A	384	LYS
1	A	437	MET
1	A	477	THR
1	A	479	ILE
1	A	496	CYS
1	A	507	CYS
1	A	508	LYS
1	A	525	SER
1	A	544	LEU
1	A	557	ASP
1	A	610	SER
1	A	662	LEU
1	A	668	LEU
1	B	282	LEU
1	B	325	ILE
1	B	342	LEU
1	B	384	LYS
1	B	436	GLN
1	B	437	MET
1	B	477	THR
1	B	496	CYS
1	B	507	CYS
1	B	508	LYS
1	B	544	LEU
1	B	557	ASP
1	B	610	SER
1	B	662	LEU
1	B	668	LEU

Sometimes sidechains can be flipped to improve hydrogen bonding and reduce clashes. All (10) such sidechains are listed below:

Mol	Chain	Res	Type
1	A	220	ASN
1	A	298	ASN
1	A	327	GLN
1	A	357	GLN
1	A	664	ASN
1	B	220	ASN
1	B	298	ASN
1	B	327	GLN
1	B	357	GLN
1	B	664	ASN

5.3.3 RNA [i](#)

There are no RNA molecules in this entry.

5.4 Non-standard residues in protein, DNA, RNA chains [i](#)

There are no non-standard protein/DNA/RNA residues in this entry.

5.5 Carbohydrates [i](#)

There are no monosaccharides in this entry.

5.6 Ligand geometry [i](#)

Of 13 ligands modelled in this entry, 6 are monoatomic - leaving 7 for Mogul analysis.

In the following table, the Counts columns list the number of bonds (or angles) for which Mogul statistics could be retrieved, the number of bonds (or angles) that are observed in the model and the number of bonds (or angles) that are defined in the Chemical Component Dictionary. The Link column lists molecule types, if any, to which the group is linked. The Z score for a bond length (or angle) is the number of standard deviations the observed value is removed from the expected value. A bond length (or angle) with $|Z| > 2$ is considered an outlier worth inspection. RMSZ is the root-mean-square of all Z scores of the bond lengths (or angles).

Mol	Type	Chain	Res	Link	Bond lengths			Bond angles		
					Counts	RMSZ	$\# Z > 2$	Counts	RMSZ	$\# Z > 2$
2	POV	A	702	-	51,51,51	1.35	6 (11%)	57,59,59	0.97	2 (3%)
2	POV	B	804	-	51,51,51	1.33	4 (7%)	57,59,59	1.01	2 (3%)
2	POV	B	802	-	51,51,51	1.29	4 (7%)	57,59,59	1.15	2 (3%)
2	POV	A	701	-	51,51,51	1.33	4 (7%)	57,59,59	1.17	3 (5%)

Mol	Type	Chain	Res	Link	Bond lengths			Bond angles		
					Counts	RMSZ	# Z > 2	Counts	RMSZ	# Z > 2
2	POV	B	803	-	51,51,51	1.28	4 (7%)	57,59,59	1.09	2 (3%)
2	POV	B	801	-	51,51,51	1.34	4 (7%)	57,59,59	0.97	2 (3%)
2	POV	A	703	-	51,51,51	1.30	4 (7%)	57,59,59	3.09	8 (14%)

In the following table, the Chirals column lists the number of chiral outliers, the number of chiral centers analysed, the number of these observed in the model and the number defined in the Chemical Component Dictionary. Similar counts are reported in the Torsion and Rings columns. '-' means no outliers of that kind were identified.

Mol	Type	Chain	Res	Link	Chirals	Torsions	Rings
2	POV	A	702	-	-	25/55/55/55	-
2	POV	B	804	-	-	30/55/55/55	-
2	POV	B	802	-	-	22/55/55/55	-
2	POV	A	701	-	-	26/55/55/55	-
2	POV	B	803	-	-	25/55/55/55	-
2	POV	B	801	-	-	24/55/55/55	-
2	POV	A	703	-	-	29/55/55/55	-

All (30) bond length outliers are listed below:

Mol	Chain	Res	Type	Atoms	Z	Observed(Å)	Ideal(Å)
2	A	702	POV	O31-C31	3.73	1.44	1.33
2	A	701	POV	O31-C31	3.67	1.44	1.33
2	B	802	POV	O31-C31	3.54	1.43	1.33
2	B	801	POV	O31-C31	3.50	1.43	1.33
2	B	804	POV	O31-C31	3.45	1.43	1.33
2	A	703	POV	O31-C31	3.38	1.43	1.33
2	A	703	POV	O21-C21	3.35	1.43	1.34
2	B	803	POV	O31-C31	3.33	1.43	1.33
2	A	701	POV	O21-C2	-3.14	1.38	1.46
2	A	702	POV	O21-C21	3.09	1.43	1.34
2	B	804	POV	O21-C21	3.09	1.43	1.34
2	B	803	POV	O21-C2	-3.05	1.39	1.46
2	B	802	POV	O21-C2	-2.99	1.39	1.46
2	B	801	POV	O21-C21	2.98	1.42	1.34
2	B	803	POV	O21-C21	2.89	1.42	1.34
2	A	701	POV	O21-C21	2.86	1.42	1.34
2	B	801	POV	O21-C2	-2.85	1.39	1.46
2	B	802	POV	O21-C21	2.74	1.42	1.34
2	A	702	POV	O21-C2	-2.72	1.39	1.46

Continued on next page...

Continued from previous page...

Mol	Chain	Res	Type	Atoms	Z	Observed(Å)	Ideal(Å)
2	A	702	POV	P-O11	2.67	1.70	1.59
2	B	803	POV	P-O11	2.66	1.70	1.59
2	B	804	POV	O21-C2	-2.66	1.39	1.46
2	A	701	POV	P-O11	2.62	1.69	1.59
2	B	801	POV	P-O11	2.59	1.69	1.59
2	B	804	POV	P-O11	2.59	1.69	1.59
2	A	703	POV	P-O11	2.53	1.69	1.59
2	B	802	POV	P-O11	2.49	1.69	1.59
2	A	702	POV	P-O12	2.07	1.67	1.59
2	A	703	POV	O21-C2	-2.02	1.41	1.46
2	A	702	POV	C32-C31	2.01	1.56	1.50

All (21) bond angle outliers are listed below:

Mol	Chain	Res	Type	Atoms	Z	Observed(°)	Ideal(°)
2	A	703	POV	C14-N-C13	-11.40	79.67	108.97
2	A	703	POV	C15-N-C13	-11.16	80.29	108.97
2	A	703	POV	C15-N-C14	9.16	132.52	108.97
2	A	703	POV	C14-N-C12	-7.21	80.42	109.92
2	A	703	POV	C15-N-C12	-7.07	80.99	109.92
2	A	703	POV	C13-N-C12	5.09	130.73	109.92
2	A	701	POV	O21-C21-C22	4.91	122.08	111.50
2	B	802	POV	O21-C21-C22	4.78	121.81	111.50
2	A	703	POV	O21-C21-C22	4.39	120.97	111.50
2	B	801	POV	O21-C21-C22	3.84	119.78	111.50
2	B	804	POV	O21-C21-C22	3.78	119.64	111.50
2	B	803	POV	O21-C21-C22	3.74	119.56	111.50
2	A	702	POV	O21-C21-C22	3.70	119.48	111.50
2	A	701	POV	O31-C31-C32	2.88	120.95	111.91
2	A	702	POV	O31-C31-C32	2.84	120.83	111.91
2	B	804	POV	O31-C31-C32	2.57	119.97	111.91
2	A	703	POV	O31-C31-C32	2.53	119.84	111.91
2	B	802	POV	O31-C31-C32	2.45	119.59	111.91
2	B	803	POV	O31-C31-C32	2.41	119.47	111.91
2	B	801	POV	O31-C31-C32	2.30	119.12	111.91
2	A	701	POV	C23-C22-C21	-2.04	106.22	113.62

There are no chirality outliers.

All (181) torsion outliers are listed below:

Mol	Chain	Res	Type	Atoms
2	A	701	POV	C11-O12-P-O14

Continued on next page...

Continued from previous page...

Mol	Chain	Res	Type	Atoms
2	A	701	POV	O22-C21-O21-C2
2	A	702	POV	C1-O11-P-O13
2	A	702	POV	O12-C11-C12-N
2	A	702	POV	C32-C31-O31-C3
2	A	703	POV	C1-O11-P-O13
2	A	703	POV	C1-O11-P-O14
2	A	703	POV	C22-C21-O21-C2
2	B	801	POV	C11-O12-P-O13
2	B	801	POV	O21-C2-C3-O31
2	B	801	POV	O12-C11-C12-N
2	B	801	POV	C22-C21-O21-C2
2	B	802	POV	C11-O12-P-O11
2	B	802	POV	C11-O12-P-O13
2	B	802	POV	O21-C2-C3-O31
2	B	802	POV	O12-C11-C12-N
2	B	803	POV	C11-O12-P-O14
2	B	803	POV	O12-C11-C12-N
2	B	804	POV	C1-O11-P-O14
2	B	804	POV	C2-C1-O11-P
2	A	701	POV	O32-C31-O31-C3
2	A	702	POV	O32-C31-O31-C3
2	A	703	POV	O32-C31-O31-C3
2	A	701	POV	C32-C31-O31-C3
2	A	703	POV	C32-C31-O31-C3
2	B	801	POV	O32-C31-O31-C3
2	B	801	POV	O22-C21-O21-C2
2	B	801	POV	C32-C31-O31-C3
2	B	804	POV	C32-C31-O31-C3
2	A	701	POV	C22-C21-O21-C2
2	A	703	POV	O22-C21-O21-C2
2	B	804	POV	O32-C31-O31-C3
2	B	803	POV	C31-C32-C33-C34
2	B	804	POV	C21-C22-C23-C24
2	B	803	POV	C21-C22-C23-C24
2	A	702	POV	C1-O11-P-O12
2	A	702	POV	C11-O12-P-O11
2	A	703	POV	C1-O11-P-O12
2	B	801	POV	C11-O12-P-O11
2	B	804	POV	C1-O11-P-O12
2	B	804	POV	C11-O12-P-O11
2	A	703	POV	C11-C12-N-C14
2	A	702	POV	C22-C23-C24-C25

Continued on next page...

Continued from previous page...

Mol	Chain	Res	Type	Atoms
2	A	703	POV	C211-C212-C213-C214
2	B	803	POV	C39-C310-C311-C312
2	B	802	POV	C23-C24-C25-C26
2	A	701	POV	C21-C22-C23-C24
2	B	804	POV	C33-C34-C35-C36
2	B	803	POV	C212-C213-C214-C215
2	A	702	POV	C211-C212-C213-C214
2	B	803	POV	C37-C38-C39-C310
2	B	802	POV	C26-C27-C28-C29
2	A	701	POV	C22-C23-C24-C25
2	B	802	POV	C39-C310-C311-C312
2	B	802	POV	C34-C35-C36-C37
2	A	703	POV	C11-C12-N-C15
2	A	701	POV	C211-C212-C213-C214
2	A	701	POV	C312-C313-C314-C315
2	A	703	POV	C24-C25-C26-C27
2	B	801	POV	C36-C37-C38-C39
2	B	802	POV	C24-C25-C26-C27
2	A	703	POV	C311-C312-C313-C314
2	A	701	POV	C36-C37-C38-C39
2	A	702	POV	C25-C26-C27-C28
2	A	701	POV	C212-C213-C214-C215
2	B	804	POV	C34-C35-C36-C37
2	B	803	POV	C22-C23-C24-C25
2	B	804	POV	C210-C211-C212-C213
2	B	804	POV	C26-C27-C28-C29
2	B	802	POV	C25-C26-C27-C28
2	B	801	POV	C310-C311-C312-C313
2	B	804	POV	C213-C214-C215-C216
2	B	802	POV	C31-C32-C33-C34
2	A	703	POV	C210-C211-C212-C213
2	B	803	POV	C26-C27-C28-C29
2	B	803	POV	C25-C26-C27-C28
2	B	801	POV	C23-C24-C25-C26
2	A	701	POV	C32-C33-C34-C35
2	B	803	POV	C310-C311-C312-C313
2	A	701	POV	C210-C211-C212-C213
2	B	801	POV	C1-C2-C3-O31
2	B	802	POV	C1-C2-C3-O31
2	A	702	POV	C313-C314-C315-C316
2	A	702	POV	C214-C215-C216-C217
2	B	802	POV	C210-C211-C212-C213

Continued on next page...

Continued from previous page...

Mol	Chain	Res	Type	Atoms
2	B	802	POV	C211-C212-C213-C214
2	A	701	POV	C35-C36-C37-C38
2	A	701	POV	C311-C310-C39-C38
2	B	804	POV	O11-C1-C2-C3
2	A	702	POV	C311-C310-C39-C38
2	A	702	POV	C36-C37-C38-C39
2	A	703	POV	C2-C1-O11-P
2	B	803	POV	C1-C2-C3-O31
2	A	703	POV	C25-C26-C27-C28
2	A	701	POV	C11-O12-P-O11
2	B	803	POV	C11-O12-P-O11
2	B	804	POV	O11-C1-C2-O21
2	A	702	POV	C34-C35-C36-C37
2	A	702	POV	C37-C38-C39-C310
2	B	803	POV	C215-C216-C217-C218
2	A	703	POV	C313-C314-C315-C316
2	A	703	POV	C36-C37-C38-C39
2	B	801	POV	C35-C36-C37-C38
2	B	804	POV	C211-C212-C213-C214
2	B	801	POV	O11-C1-C2-C3
2	B	801	POV	C33-C34-C35-C36
2	B	803	POV	O31-C31-C32-C33
2	B	801	POV	O11-C1-C2-O21
2	B	803	POV	O21-C2-C3-O31
2	B	804	POV	O21-C2-C3-O31
2	B	801	POV	C22-C23-C24-C25
2	A	703	POV	C32-C33-C34-C35
2	B	801	POV	C210-C211-C212-C213
2	B	803	POV	C210-C211-C212-C213
2	B	802	POV	C33-C34-C35-C36
2	B	802	POV	O22-C21-O21-C2
2	A	703	POV	C34-C35-C36-C37
2	B	804	POV	C312-C313-C314-C315
2	A	702	POV	C1-O11-P-O14
2	A	702	POV	C11-O12-P-O13
2	B	802	POV	C11-O12-P-O14
2	B	804	POV	C11-O12-P-O13
2	A	702	POV	O11-C1-C2-C3
2	B	802	POV	C22-C21-O21-C2
2	B	804	POV	C31-C32-C33-C34
2	A	701	POV	C33-C34-C35-C36
2	A	702	POV	C215-C216-C217-C218

Continued on next page...

Continued from previous page...

Mol	Chain	Res	Type	Atoms
2	B	803	POV	C24-C25-C26-C27
2	B	801	POV	C31-C32-C33-C34
2	A	702	POV	O11-C1-C2-O21
2	A	701	POV	C23-C24-C25-C26
2	A	703	POV	O12-C11-C12-N
2	B	804	POV	C1-C2-C3-O31
2	B	804	POV	O12-C11-C12-N
2	B	803	POV	C23-C24-C25-C26
2	A	703	POV	C1-C2-O21-C21
2	A	703	POV	O11-C1-C2-C3
2	A	702	POV	C32-C33-C34-C35
2	A	701	POV	C34-C35-C36-C37
2	B	802	POV	C213-C214-C215-C216
2	A	701	POV	C26-C27-C28-C29
2	A	702	POV	C24-C25-C26-C27
2	A	703	POV	C37-C38-C39-C310
2	A	703	POV	C1-C2-C3-O31
2	B	804	POV	C35-C36-C37-C38
2	A	701	POV	C29-C210-C211-C212
2	B	803	POV	C211-C212-C213-C214
2	B	801	POV	C34-C35-C36-C37
2	A	703	POV	C26-C27-C28-C29
2	B	801	POV	C211-C212-C213-C214
2	A	701	POV	C310-C311-C312-C313
2	B	802	POV	C310-C311-C312-C313
2	B	804	POV	C22-C23-C24-C25
2	A	703	POV	C23-C24-C25-C26
2	B	804	POV	O31-C31-C32-C33
2	A	703	POV	C213-C214-C215-C216
2	B	804	POV	C37-C38-C39-C310
2	A	701	POV	C1-O11-P-O12
2	B	801	POV	O21-C21-C22-C23
2	B	801	POV	C24-C25-C26-C27
2	B	804	POV	C27-C28-C29-C210
2	A	701	POV	O31-C31-C32-C33
2	B	804	POV	C215-C216-C217-C218
2	B	804	POV	C212-C213-C214-C215
2	B	803	POV	O21-C21-C22-C23
2	B	802	POV	C32-C33-C34-C35
2	B	801	POV	O22-C21-C22-C23
2	B	804	POV	O32-C31-C32-C33
2	A	702	POV	C27-C28-C29-C210

Continued on next page...

Continued from previous page...

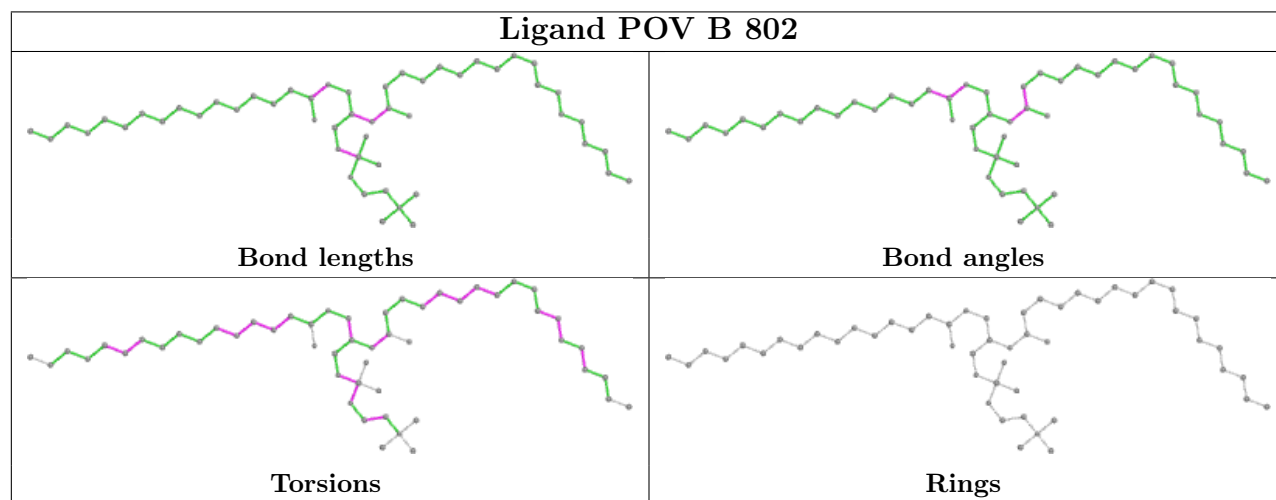
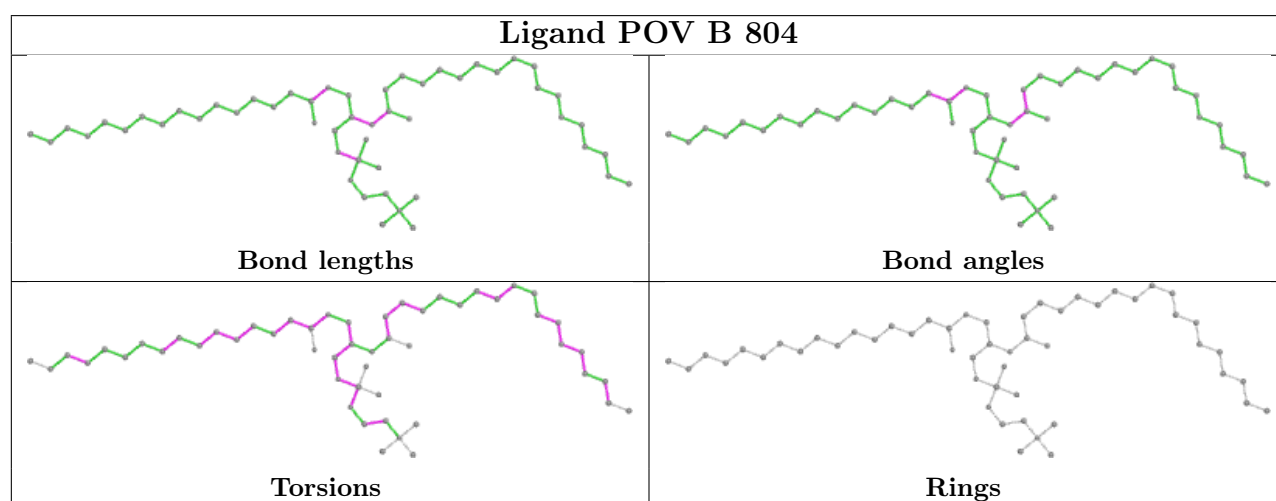
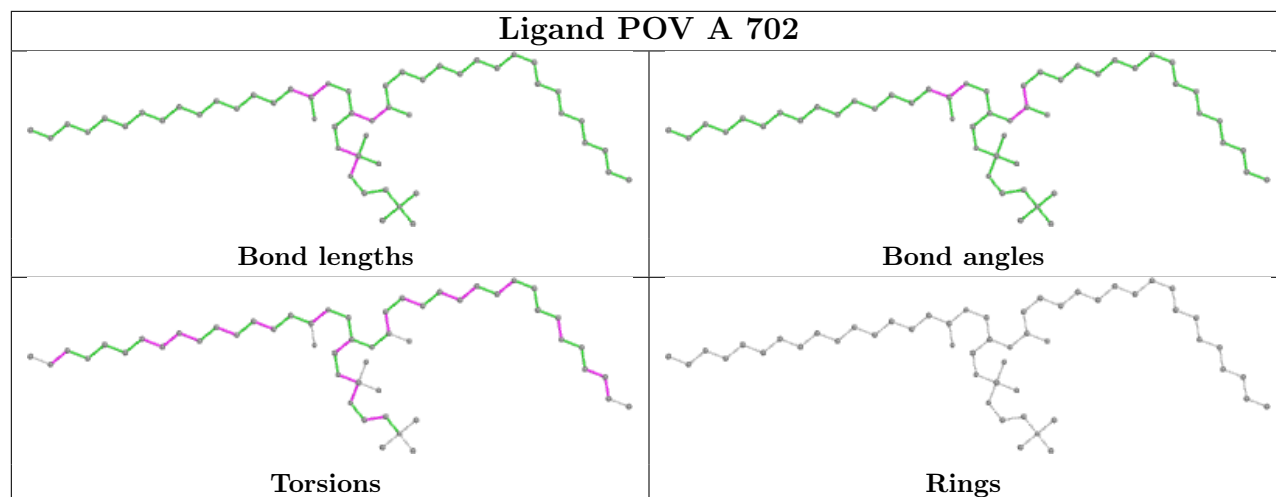
Mol	Chain	Res	Type	Atoms
2	B	802	POV	C1-O11-P-O14
2	B	803	POV	C1-O11-P-O14
2	A	701	POV	C27-C28-C29-C210
2	B	803	POV	O32-C31-C32-C33
2	A	701	POV	O32-C31-C32-C33
2	A	703	POV	O21-C21-C22-C23
2	B	803	POV	O22-C21-C22-C23
2	A	702	POV	O21-C21-C22-C23
2	A	702	POV	O22-C21-C22-C23
2	A	703	POV	O22-C21-C22-C23
2	B	804	POV	O21-C21-C22-C23
2	B	803	POV	C311-C310-C39-C38

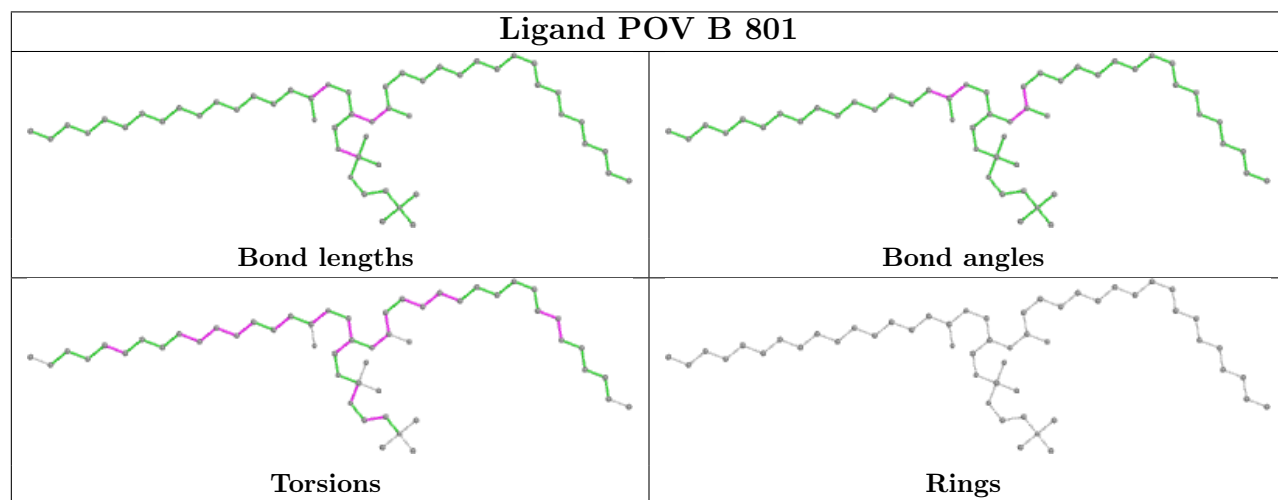
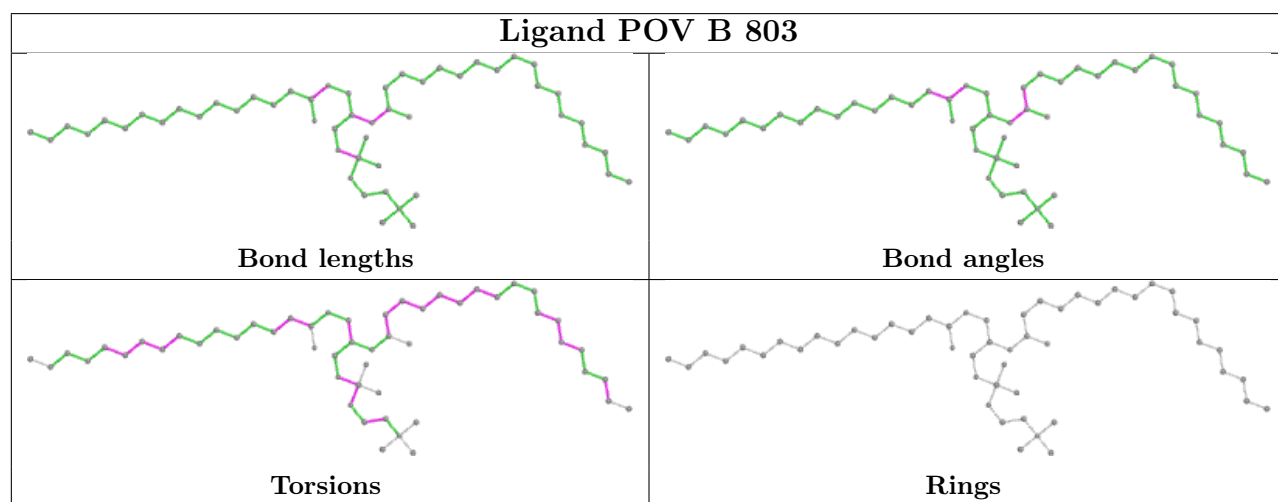
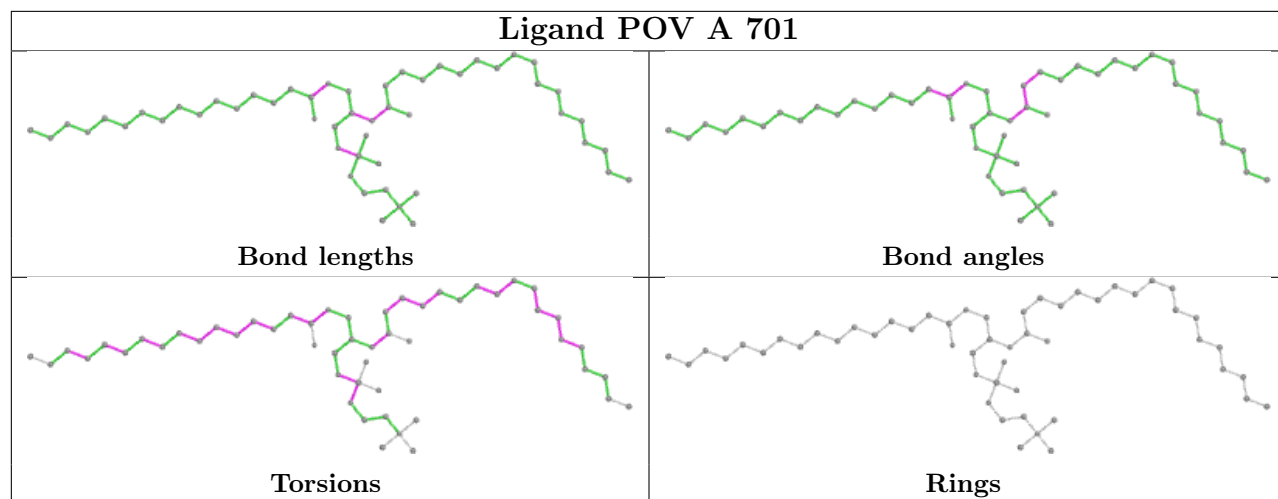
There are no ring outliers.

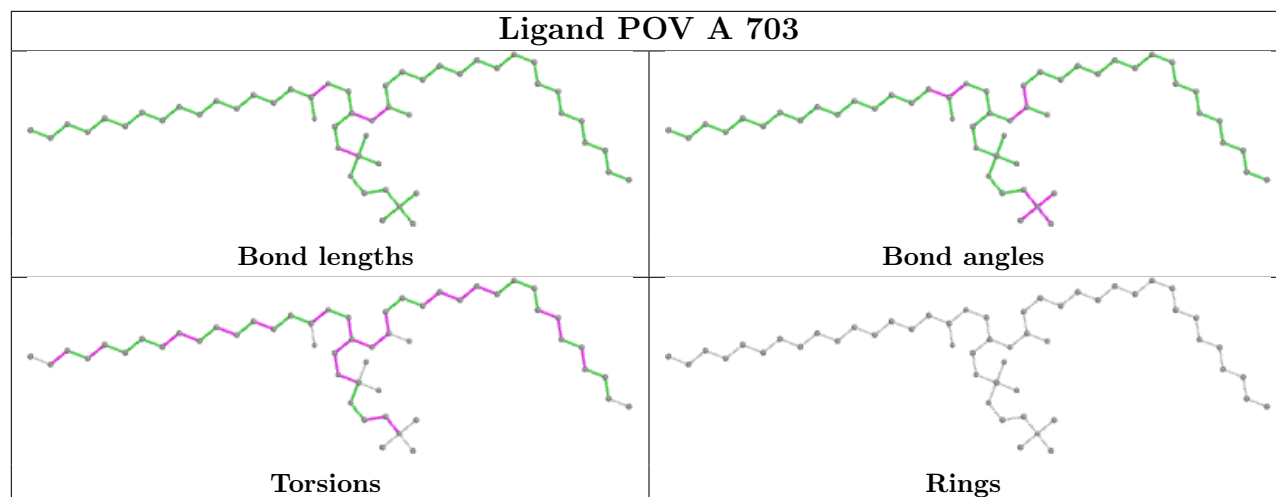
7 monomers are involved in 17 short contacts:

Mol	Chain	Res	Type	Clashes	Symm-Clashes
2	A	702	POV	1	0
2	B	804	POV	1	0
2	B	802	POV	3	0
2	A	701	POV	2	0
2	B	803	POV	6	0
2	B	801	POV	3	0
2	A	703	POV	1	0

The following is a two-dimensional graphical depiction of Mogul quality analysis of bond lengths, bond angles, torsion angles, and ring geometry for all instances of the Ligand of Interest. In addition, ligands with molecular weight > 250 and outliers as shown on the validation Tables will also be included. For torsion angles, if less than 5% of the Mogul distribution of torsion angles is within 10 degrees of the torsion angle in question, then that torsion angle is considered an outlier. Any bond that is central to one or more torsion angles identified as an outlier by Mogul will be highlighted in the graph. For rings, the root-mean-square deviation (RMSD) between the ring in question and similar rings identified by Mogul is calculated over all ring torsion angles. If the average RMSD is greater than 60 degrees and the minimal RMSD between the ring in question and any Mogul-identified rings is also greater than 60 degrees, then that ring is considered an outlier. The outliers are highlighted in purple. The color gray indicates Mogul did not find sufficient equivalents in the CSD to analyse the geometry.







5.7 Other polymers [i](#)

There are no such residues in this entry.

5.8 Polymer linkage issues [i](#)

There are no chain breaks in this entry.

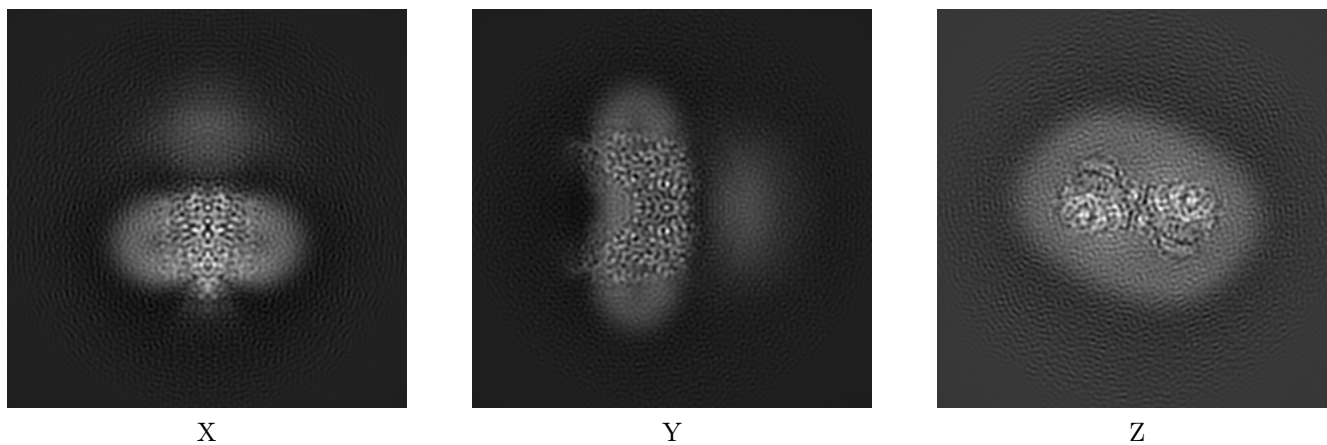
6 Map visualisation [i](#)

This section contains visualisations of the EMDB entry EMD-0470. These allow visual inspection of the internal detail of the map and identification of artifacts.

No raw map or half-maps were deposited for this entry and therefore no images, graphs, etc. pertaining to the raw map can be shown.

6.1 Orthogonal projections [i](#)

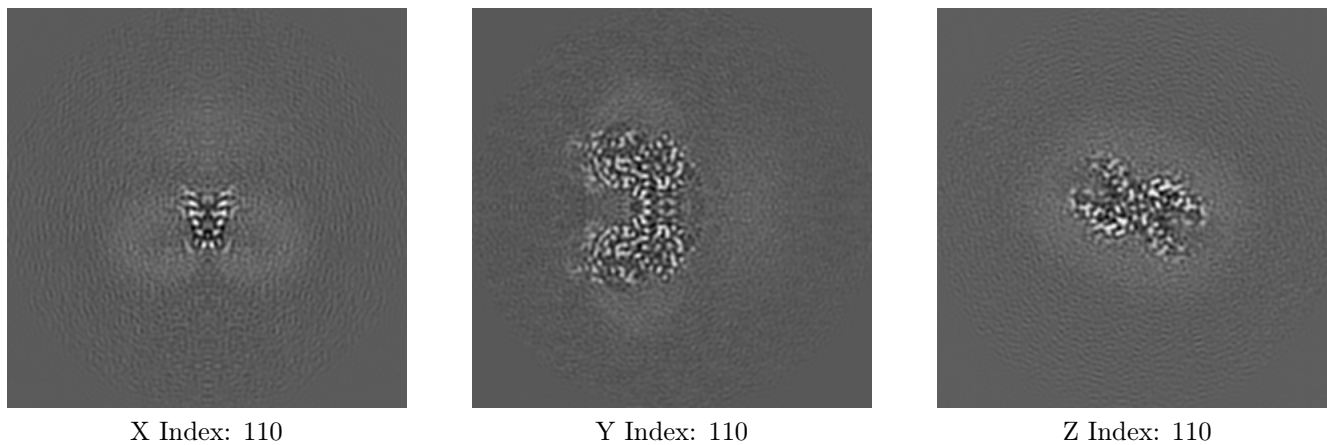
6.1.1 Primary map



The images above show the map projected in three orthogonal directions.

6.2 Central slices [i](#)

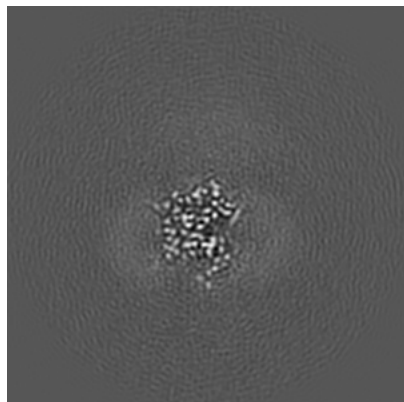
6.2.1 Primary map



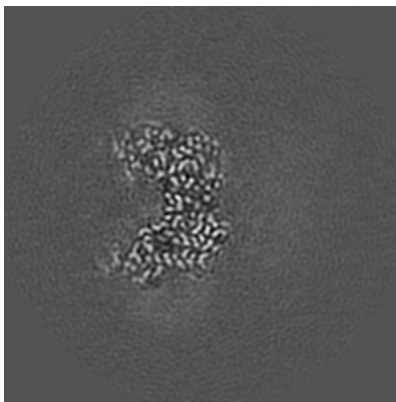
The images above show central slices of the map in three orthogonal directions.

6.3 Largest variance slices [i](#)

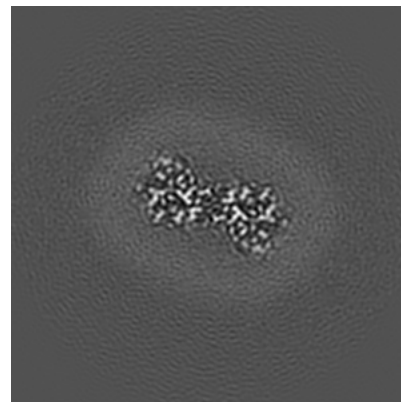
6.3.1 Primary map



X Index: 125



Y Index: 106

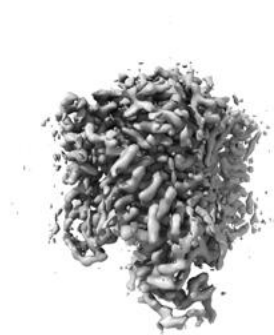


Z Index: 98

The images above show the largest variance slices of the map in three orthogonal directions.

6.4 Orthogonal surface views [i](#)

6.4.1 Primary map



X



Y



Z

The images above show the 3D surface view of the map at the recommended contour level 0.0655. These images, in conjunction with the slice images, may facilitate assessment of whether an appropriate contour level has been provided.

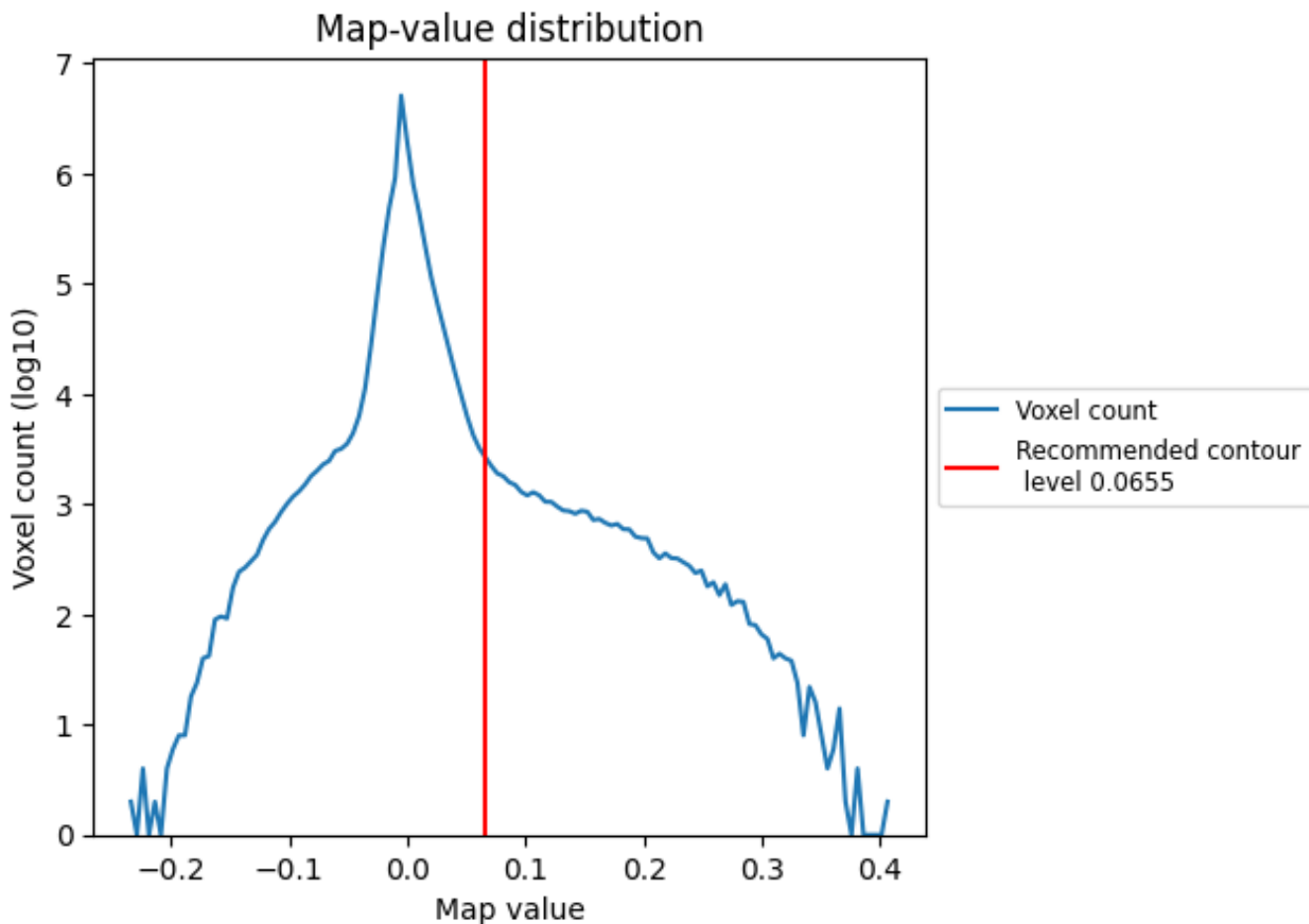
6.5 Mask visualisation

This section was not generated. No masks/segmentation were deposited.

7 Map analysis [i](#)

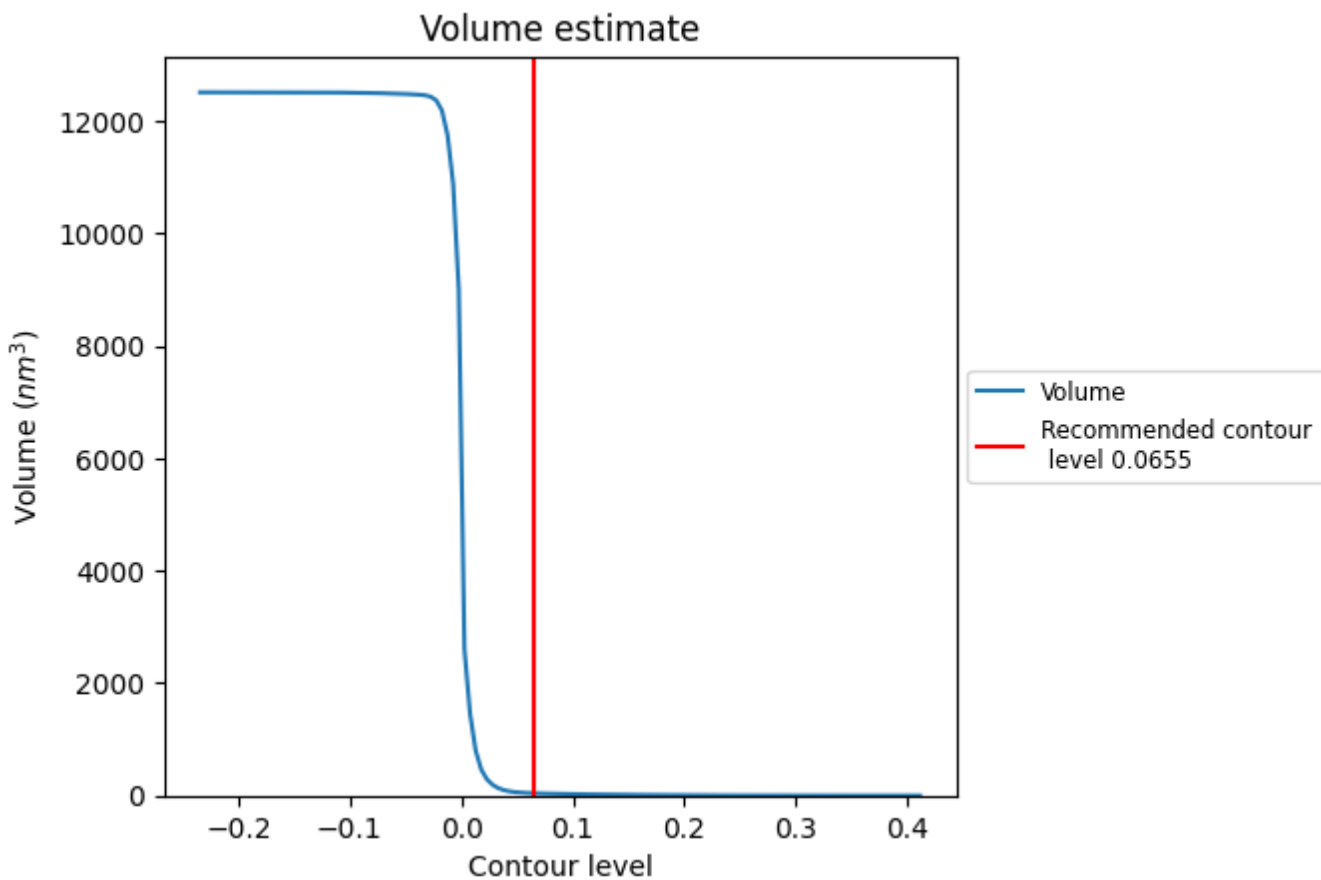
This section contains the results of statistical analysis of the map.

7.1 Map-value distribution [i](#)



The map-value distribution is plotted in 128 intervals along the x-axis. The y-axis is logarithmic. A spike in this graph at zero usually indicates that the volume has been masked.

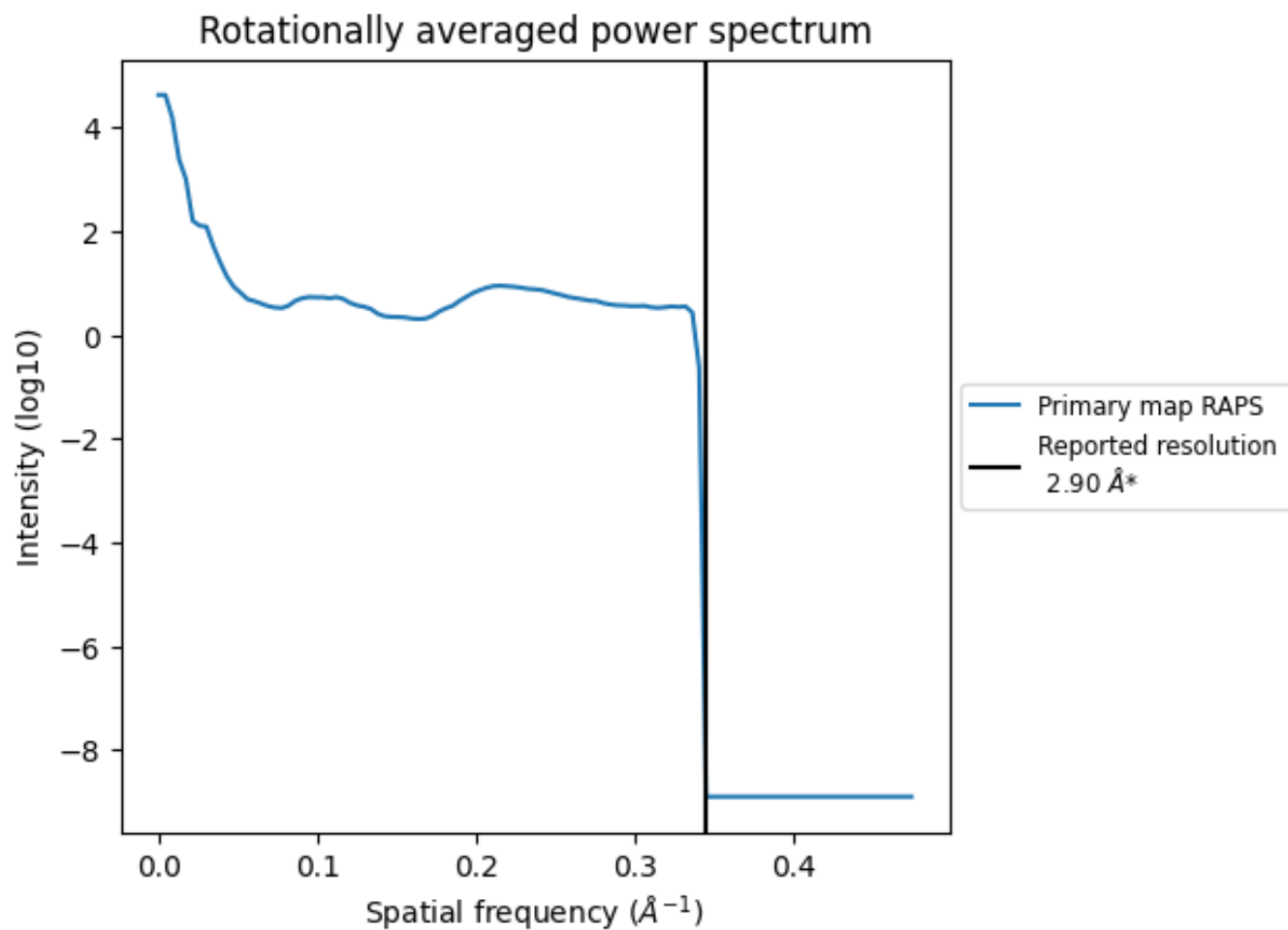
7.2 Volume estimate [i](#)



The volume at the recommended contour level is 41 nm³; this corresponds to an approximate mass of 37 kDa.

The volume estimate graph shows how the enclosed volume varies with the contour level. The recommended contour level is shown as a vertical line and the intersection between the line and the curve gives the volume of the enclosed surface at the given level.

7.3 Rotationally averaged power spectrum [i](#)

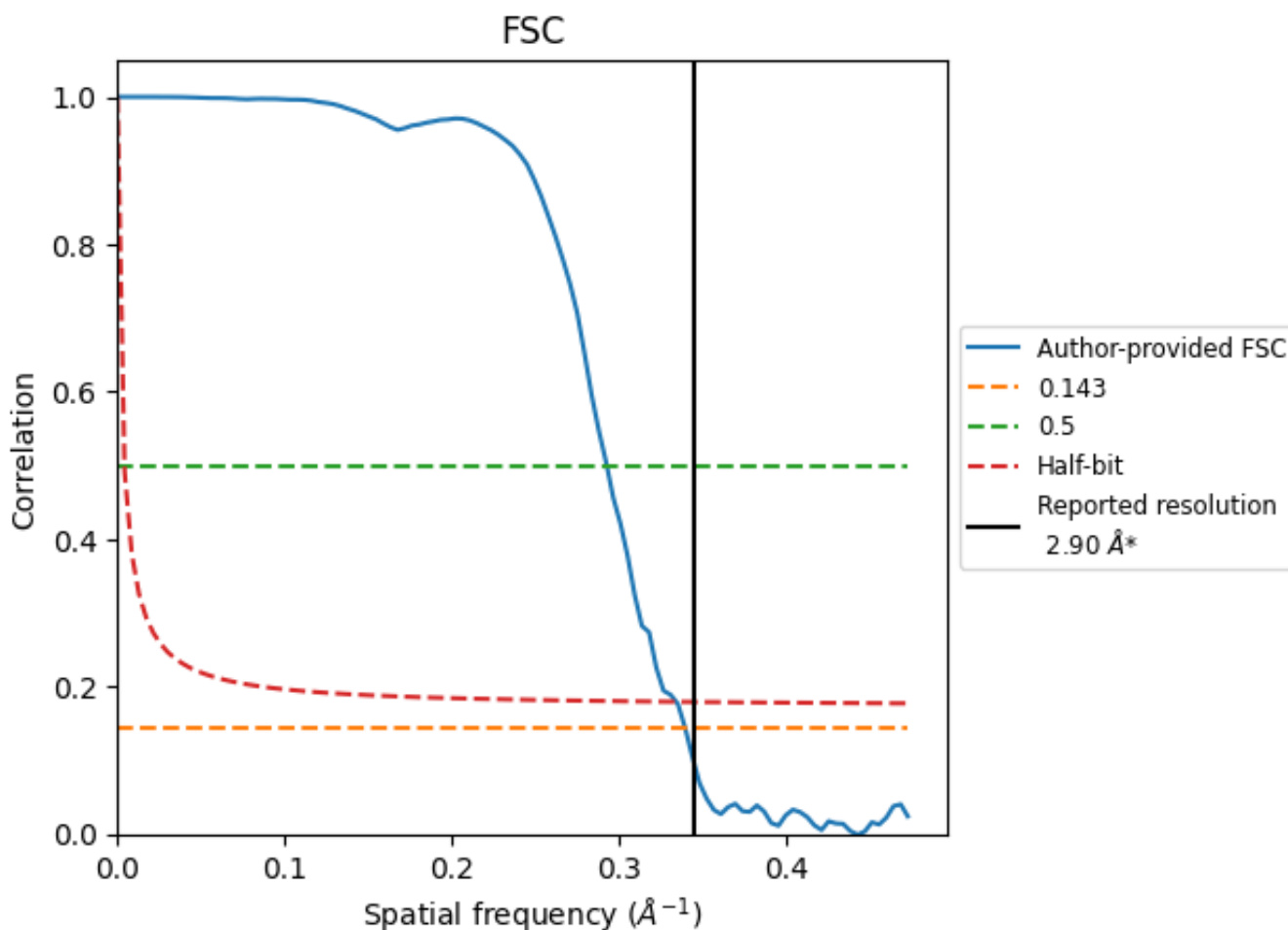


*Reported resolution corresponds to spatial frequency of 0.345 Å⁻¹

8 Fourier-Shell correlation [\(i\)](#)

Fourier-Shell Correlation (FSC) is the most commonly used method to estimate the resolution of single-particle and subtomogram-averaged maps. The shape of the curve depends on the imposed symmetry, mask and whether or not the two 3D reconstructions used were processed from a common reference. The reported resolution is shown as a black line. A curve is displayed for the half-bit criterion in addition to lines showing the 0.143 gold standard cut-off and 0.5 cut-off.

8.1 FSC [\(i\)](#)



*Reported resolution corresponds to spatial frequency of 0.345 Å⁻¹

8.2 Resolution estimates [i](#)

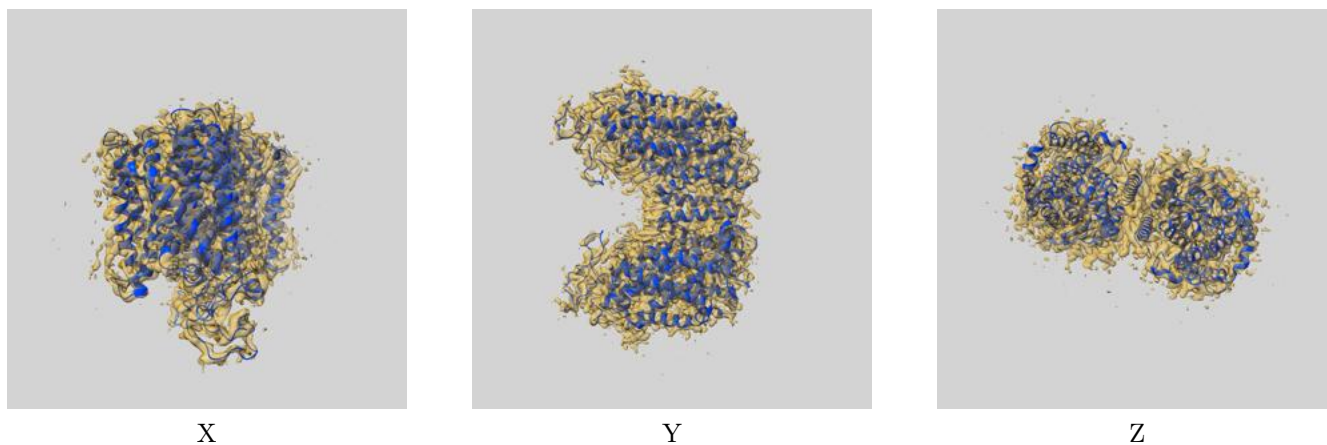
Resolution estimate (Å)	Estimation criterion (FSC cut-off)		
	0.143	0.5	Half-bit
Reported by author	2.90	-	-
Author-provided FSC curve	2.95	3.42	3.00
Unmasked-calculated*	-	-	-

*Resolution estimate based on FSC curve calculated by comparison of deposited half-maps.

9 Map-model fit [i](#)

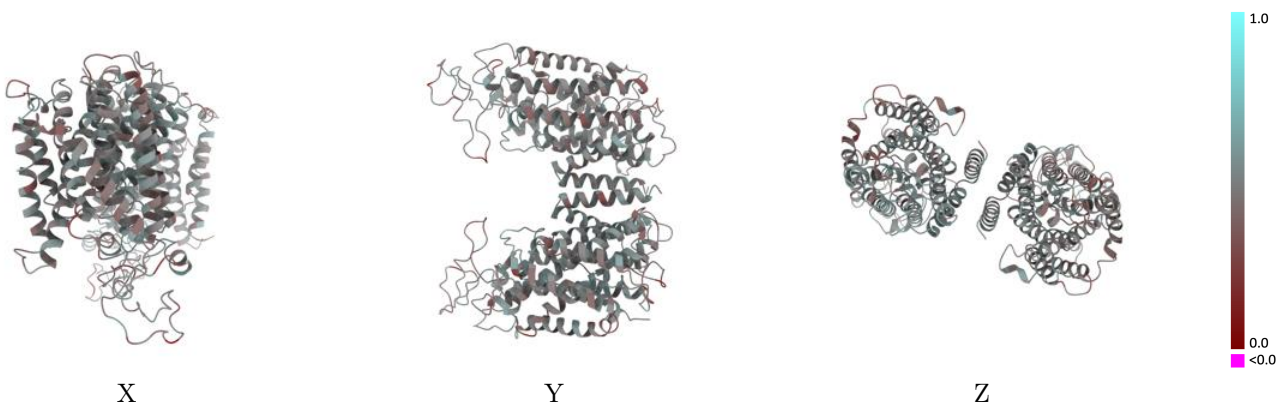
This section contains information regarding the fit between EMDB map EMD-0470 and PDB model 6NPH. Per-residue inclusion information can be found in section 3 on page 5.

9.1 Map-model overlay [i](#)



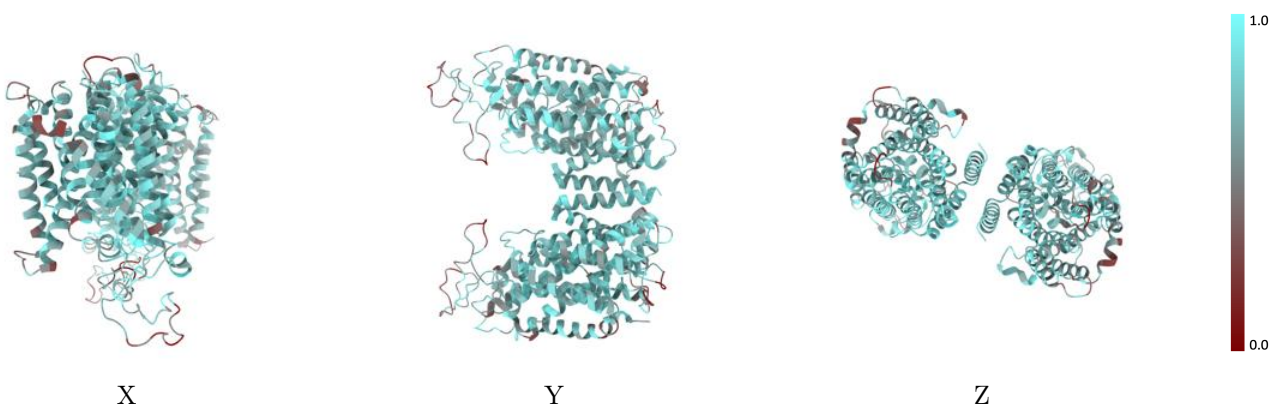
The images above show the 3D surface view of the map at the recommended contour level 0.0655 at 50% transparency in yellow overlaid with a ribbon representation of the model coloured in blue. These images allow for the visual assessment of the quality of fit between the atomic model and the map.

9.2 Q-score mapped to coordinate model [i](#)



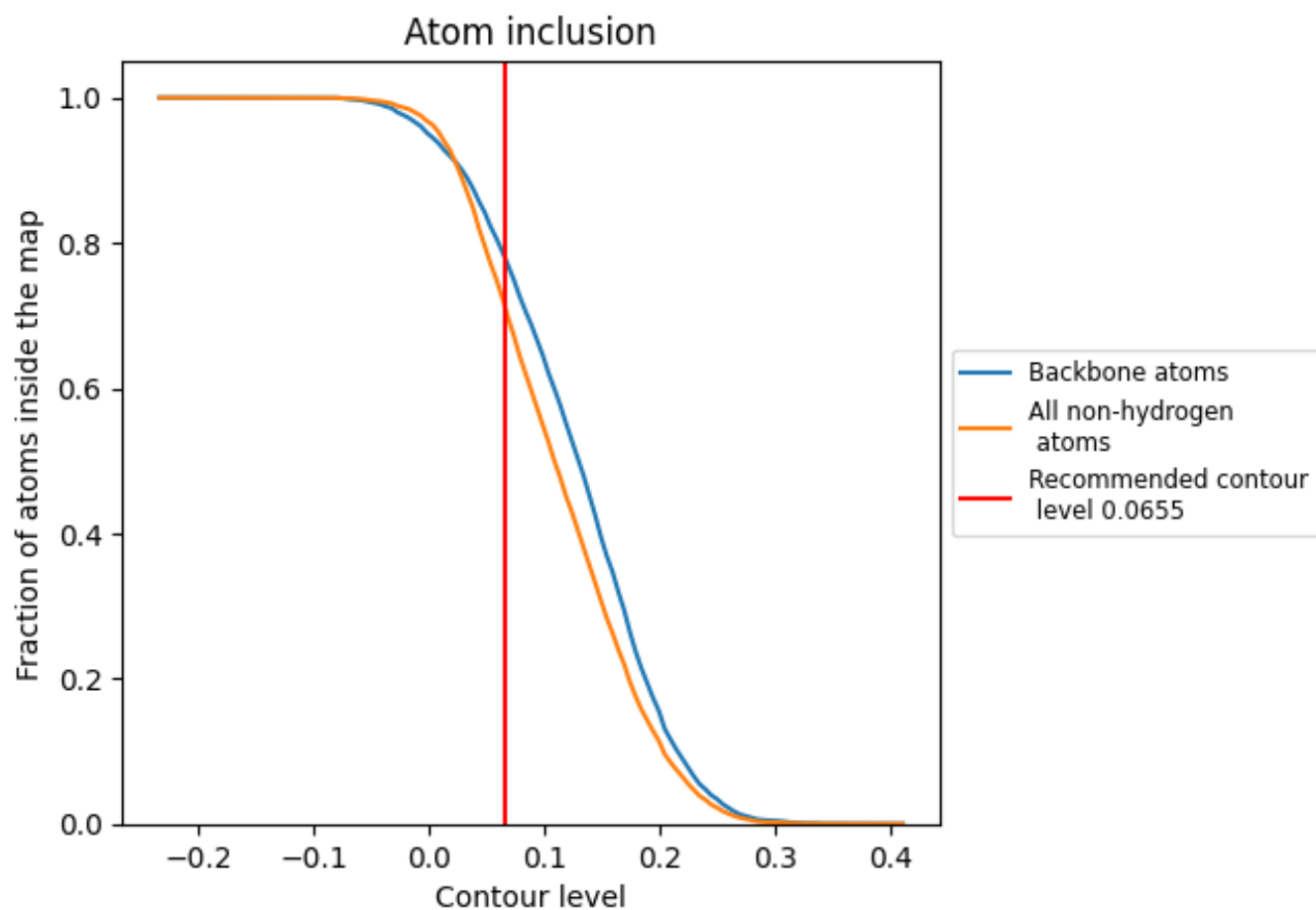
The images above show the model with each residue coloured according to its Q-score. This shows their resolvability in the map with higher Q-score values reflecting better resolvability. Please note: Q-score is calculating the resolvability of atoms, and thus high values are only expected at resolutions at which atoms can be resolved. Low Q-score values may therefore be expected for many entries.

9.3 Atom inclusion mapped to coordinate model [i](#)



The images above show the model with each residue coloured according to its atom inclusion. This shows to what extent they are inside the map at the recommended contour level (0.0655).







9.4 Atom inclusion [i](#)



At the recommended contour level, 78% of all backbone atoms, 71% of all non-hydrogen atoms, are inside the map.

9.5 Map-model fit summary [i](#)

The table lists the average atom inclusion at the recommended contour level (0.0655) and Q-score for the entire model and for each chain.

Chain	Atom inclusion	Q-score
All	 0.7144	 0.4750
A	 0.7247	 0.4840
B	 0.7042	 0.4660

