



Full wwPDB X-ray Structure Validation Report ⓘ

Aug 10, 2020 – 11:53 AM BST

PDB ID : 1NT0
Title : Crystal structure of the CUB1-EGF-CUB2 region of MASP2
Authors : Feinberg, H.; Uitdehaag, J.C.M.; Davies, J.M.; Wallis, R.; Drickamer, K.;
Weis, W.I.
Deposited on : 2003-01-28
Resolution : 2.70 Å(reported)

This is a Full wwPDB X-ray Structure Validation Report for a publicly released PDB entry.

We welcome your comments at validation@mail.wwpdb.org

A user guide is available at

<https://www.wwpdb.org/validation/2017/XrayValidationReportHelp>

with specific help available everywhere you see the ⓘ symbol.

The following versions of software and data (see [references ⓘ](#)) were used in the production of this report:

MolProbity : 4.02b-467
Mogul : 1.8.5 (274361), CSD as541be (2020)
Xtriage (Phenix) : 1.13
EDS : 2.13.1
Percentile statistics : 20191225.v01 (using entries in the PDB archive December 25th 2019)
Refmac : 5.8.0158
CCP4 : 7.0.044 (Gargrove)
Ideal geometry (proteins) : Engh & Huber (2001)
Ideal geometry (DNA, RNA) : Parkinson et al. (1996)
Validation Pipeline (wwPDB-VP) : 2.13.1

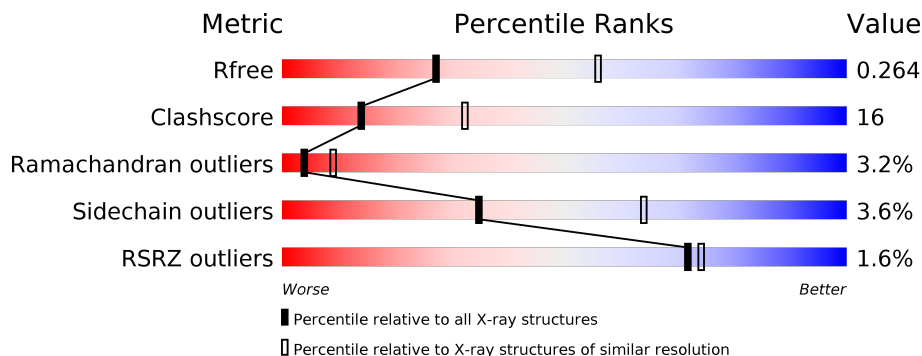
1 Overall quality at a glance

The following experimental techniques were used to determine the structure:

X-RAY DIFFRACTION

The reported resolution of this entry is 2.70 Å.

Percentile scores (ranging between 0-100) for global validation metrics of the entry are shown in the following graphic. The table shows the number of entries on which the scores are based.



Metric	Whole archive (#Entries)	Similar resolution (#Entries, resolution range(Å))
R_{free}	130704	2808 (2.70-2.70)
Clashscore	141614	3122 (2.70-2.70)
Ramachandran outliers	138981	3069 (2.70-2.70)
Sidechain outliers	138945	3069 (2.70-2.70)
RSRZ outliers	127900	2737 (2.70-2.70)

The table below summarises the geometric issues observed across the polymeric chains and their fit to the electron density. The red, orange, yellow and green segments on the lower bar indicate the fraction of residues that contain outliers for ≥ 3 , 2, 1 and 0 types of geometric quality criteria respectively. A grey segment represents the fraction of residues that are not modelled. The numeric value for each fraction is indicated below the corresponding segment, with a dot representing fractions $\leq 5\%$. The upper red bar (where present) indicates the fraction of residues that have poor fit to the electron density. The numeric value is given above the bar.

Mol	Chain	Length	Quality of chain
1	A	286	
1	G	286	

The following table lists non-polymeric compounds, carbohydrate monomers and non-standard residues in protein, DNA, RNA chains that are outliers for geometric or electron-density-fit criteria:

Mol	Type	Chain	Res	Chirality	Geometry	Clashes	Electron density
1	AHB	A	139	X	-	-	-
1	AHB	G	139	X	-	-	-

2 Entry composition [i](#)

There are 5 unique types of molecules in this entry. The entry contains 4210 atoms, of which 0 are hydrogens and 0 are deuteriums.

In the tables below, the ZeroOcc column contains the number of atoms modelled with zero occupancy, the AltConf column contains the number of residues with at least one atom in alternate conformation and the Trace column contains the number of residues modelled with at most 2 atoms.

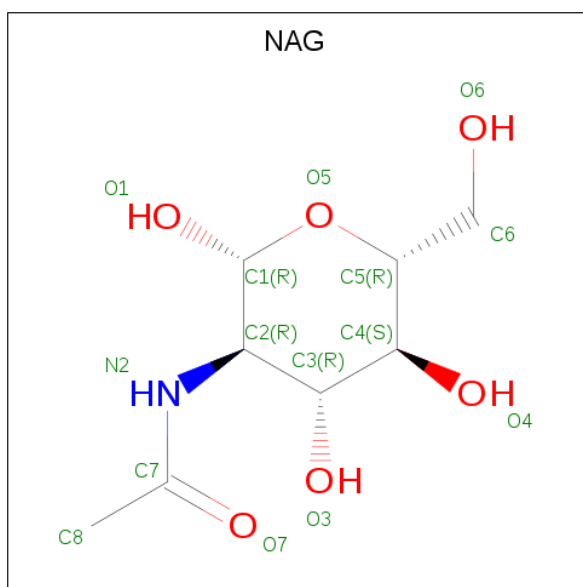
- Molecule 1 is a protein called mannose-binding protein associated serine protease-2.

Mol	Chain	Residues	Atoms					ZeroOcc	AltConf	Trace
			Total	C	N	O	S			
1	A	257	2025	1290	333	389	13	0	0	0
1	G	257	2025	1290	333	389	13	0	0	0

There are 14 discrepancies between the modelled and reference sequences:

Chain	Residue	Modelled	Actual	Comment	Reference
A	139	AHB	ASN	modified residue	UNP Q9JJS8
A	281	HIS	-	expression tag	UNP Q9JJS8
A	282	HIS	-	expression tag	UNP Q9JJS8
A	283	HIS	-	expression tag	UNP Q9JJS8
A	284	HIS	-	expression tag	UNP Q9JJS8
A	285	HIS	-	expression tag	UNP Q9JJS8
A	286	HIS	-	expression tag	UNP Q9JJS8
G	139	AHB	ASN	modified residue	UNP Q9JJS8
G	281	HIS	-	expression tag	UNP Q9JJS8
G	282	HIS	-	expression tag	UNP Q9JJS8
G	283	HIS	-	expression tag	UNP Q9JJS8
G	284	HIS	-	expression tag	UNP Q9JJS8
G	285	HIS	-	expression tag	UNP Q9JJS8
G	286	HIS	-	expression tag	UNP Q9JJS8

- Molecule 2 is 2-acetamido-2-deoxy-beta-D-glucopyranose (three-letter code: NAG) (formula: C₈H₁₅NO₆).

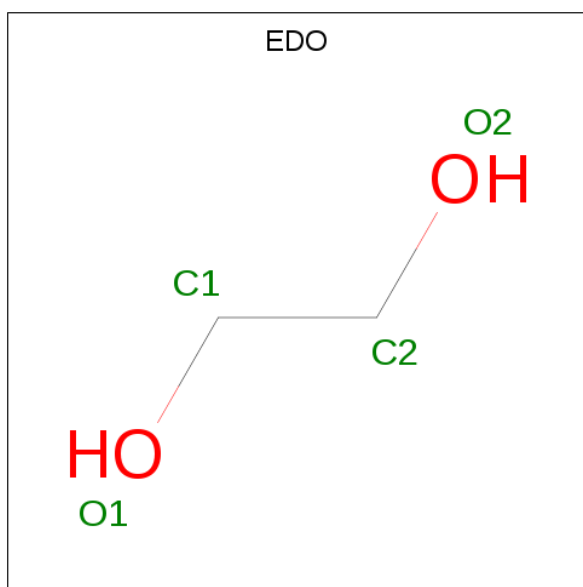


Mol	Chain	Residues	Atoms				ZeroOcc	AltConf
			Total	C	N	O		
2	A	1	14	8	1	5	0	0
2	G	1	14	8	1	5	0	0

- Molecule 3 is CALCIUM ION (three-letter code: CA) (formula: Ca).

Mol	Chain	Residues	Atoms		ZeroOcc	AltConf
			Total	Ca		
3	G	1	1	1	0	0
3	A	1	1	1	0	0

- Molecule 4 is 1,2-ETHANEDIOL (three-letter code: EDO) (formula: C₂H₆O₂).



Mol	Chain	Residues	Atoms	ZeroOcc	AltConf
4	A	1	Total C O 12 6 6	0	1
4	G	1	Total C O 12 6 6	0	1

- Molecule 5 is water.

Mol	Chain	Residues	Atoms	ZeroOcc	AltConf
5	A	54	Total O 54 54	0	0
5	G	52	Total O 52 52	0	0

4 Data and refinement statistics

Property	Value	Source
Space group	P 1 21 1	Depositor
Cell constants a, b, c, α , β , γ	70.41Å 103.90Å 70.48Å 90.00° 119.93° 90.00°	Depositor
Resolution (Å)	39.56 – 2.70 39.56 – 2.70	Depositor EDS
% Data completeness (in resolution range)	(Not available) (39.56-2.70) 98.0 (39.56-2.70)	Depositor EDS
R_{merge}	(Not available)	Depositor
R_{sym}	(Not available)	Depositor
$\langle I/\sigma(I) \rangle$ ¹	3.69 (at 2.69Å)	Xtriage
Refinement program	CNS	Depositor
R, R_{free}	0.248 , 0.283 0.234 , 0.264	Depositor DCC
R_{free} test set	2357 reflections (9.87%)	wwPDB-VP
Wilson B-factor (Å ²)	38.2	Xtriage
Anisotropy	0.572	Xtriage
Bulk solvent k_{sol} (e/Å ³), B_{sol} (Å ²)	0.32 , 22.1	EDS
L-test for twinning ²	$\langle L \rangle = 0.49$, $\langle L^2 \rangle = 0.33$	Xtriage
Estimated twinning fraction	0.015 for -h-l,k,h 0.015 for l,k,-h-l 0.024 for h,-k,-h-l 0.457 for -h-l,-k,l 0.022 for l,-k,h	Xtriage
F_o, F_c correlation	0.90	EDS
Total number of atoms	4210	wwPDB-VP
Average B, all atoms (Å ²)	43.0	wwPDB-VP

Xtriage's analysis on translational NCS is as follows: *The largest off-origin peak in the Patterson function is 6.97% of the height of the origin peak. No significant pseudotranslation is detected.*

¹Intensities estimated from amplitudes.

²Theoretical values of $\langle |L| \rangle$, $\langle L^2 \rangle$ for acentric reflections are 0.5, 0.333 respectively for untwinned datasets, and 0.375, 0.2 for perfectly twinned datasets.

5 Model quality [i](#)

5.1 Standard geometry [i](#)

Bond lengths and bond angles in the following residue types are not validated in this section: AHB, CA, NAG, EDO

The Z score for a bond length (or angle) is the number of standard deviations the observed value is removed from the expected value. A bond length (or angle) with $|Z| > 5$ is considered an outlier worth inspection. RMSZ is the root-mean-square of all Z scores of the bond lengths (or angles).

Mol	Chain	Bond lengths		Bond angles	
		RMSZ	# Z >5	RMSZ	# Z >5
1	A	0.41	0/2075	0.67	0/2814
1	G	0.40	0/2075	0.67	0/2814
All	All	0.41	0/4150	0.67	0/5628

Chiral center outliers are detected by calculating the chiral volume of a chiral center and verifying if the center is modelled as a planar moiety or with the opposite hand. A planarity outlier is detected by checking planarity of atoms in a peptide group, atoms in a mainchain group or atoms of a sidechain that are expected to be planar.

Mol	Chain	#Chirality outliers	#Planarity outliers
1	A	1	0
1	G	1	0
All	All	2	0

There are no bond length outliers.

There are no bond angle outliers.

All (2) chirality outliers are listed below:

Mol	Chain	Res	Type	Atom
1	A	139	AHB	CB
1	G	139	AHB	CB

There are no planarity outliers.

5.2 Too-close contacts [i](#)

In the following table, the Non-H and H(model) columns list the number of non-hydrogen atoms and hydrogen atoms in the chain respectively. The H(added) column lists the number of hydrogen

atoms added and optimized by MolProbity. The Clashes column lists the number of clashes within the asymmetric unit, whereas Symm-Clashes lists symmetry related clashes.

Mol	Chain	Non-H	H(model)	H(added)	Clashes	Symm-Clashes
1	A	2025	0	1856	63	1
1	G	2025	0	1856	61	1
2	A	14	0	13	0	0
2	G	14	0	13	0	0
3	A	1	0	0	0	0
3	G	1	0	0	0	0
4	A	12	0	18	2	0
4	G	12	0	18	2	0
5	A	54	0	0	0	0
5	G	52	0	0	0	0
All	All	4210	0	3774	124	1

The all-atom clashscore is defined as the number of clashes found per 1000 atoms (including hydrogen atoms). The all-atom clashscore for this structure is 16.

All (124) close contacts within the same asymmetric unit are listed below, sorted by their clash magnitude.

Atom-1	Atom-2	Interatomic distance (Å)	Clash overlap (Å)
1:A:70:LEU:HD13	1:A:82:PRO:HG3	1.33	1.06
1:G:70:LEU:HD13	1:G:82:PRO:HG3	1.33	1.05
1:G:204:ILE:HD11	1:G:274:TYR:HB2	1.53	0.90
1:A:204:ILE:HD11	1:A:274:TYR:HB2	1.53	0.88
1:A:155:HIS:CD2	1:A:156:GLN:H	1.97	0.82
1:G:155:HIS:CD2	1:G:156:GLN:H	1.97	0.81
1:A:210:GLU:OE2	1:A:271:LYS:HD3	1.90	0.72
1:G:210:GLU:OE2	1:G:271:LYS:HD3	1.90	0.71
1:G:163:ALA:HB2	1:G:187:PRO:HG2	1.75	0.69
1:A:163:ALA:HB2	1:A:187:PRO:HG2	1.75	0.68
1:A:157:ASN:HD21	1:A:160:THR:HB	1.60	0.67
1:G:157:ASN:HD21	1:G:160:THR:HB	1.60	0.67
1:A:78:THR:HG23	1:A:79:GLU:OE1	1.99	0.62
1:G:78:THR:HG23	1:G:79:GLU:OE1	1.99	0.62
1:G:204:ILE:HG13	1:G:275:THR:O	2.00	0.61
1:A:204:ILE:HG13	1:A:275:THR:O	2.00	0.61
1:A:233:LYS:O	1:A:234:ARG:HB2	2.03	0.59
1:G:233:LYS:O	1:G:234:ARG:HB2	2.02	0.59
1:G:213:ASP:OD2	1:G:267:HIS:HA	2.04	0.57
1:A:213:ASP:OD2	1:A:267:HIS:HA	2.04	0.57
1:G:172:GLY:O	1:G:198:LEU:HD21	2.06	0.56

Continued on next page...

Continued from previous page...

Atom-1	Atom-2	Interatomic distance (Å)	Clash overlap (Å)
1:A:172:GLY:O	1:A:198:LEU:HD21	2.06	0.56
1:A:202:PHE:HD1	1:A:202:PHE:H	1.55	0.55
1:A:78:THR:HG23	1:A:79:GLU:CD	2.27	0.55
1:G:78:THR:HG23	1:G:79:GLU:CD	2.27	0.55
1:A:12:VAL:HG23	4:A:5001[B]:EDO:O1	2.07	0.55
1:G:163:ALA:HB2	1:G:187:PRO:CG	2.37	0.55
1:G:180:PRO:HB2	1:G:187:PRO:CD	2.37	0.54
1:A:180:PRO:HB2	1:A:187:PRO:CD	2.37	0.54
1:G:135:HIS:HD2	1:G:149:ARG:H	1.56	0.54
1:A:163:ALA:HB2	1:A:187:PRO:CG	2.37	0.54
1:G:135:HIS:CD2	1:G:149:ARG:HG3	2.43	0.54
1:A:135:HIS:CD2	1:A:149:ARG:HG3	2.43	0.54
1:G:12:VAL:HG23	4:G:6001[B]:EDO:O1	2.07	0.54
1:G:135:HIS:CD2	1:G:149:ARG:H	2.26	0.54
1:G:157:ASN:HD21	1:G:160:THR:CB	2.21	0.53
1:A:157:ASN:HD21	1:A:160:THR:CB	2.21	0.53
1:G:202:PHE:HD1	1:G:202:PHE:H	1.55	0.53
1:A:135:HIS:HD2	1:A:149:ARG:H	1.56	0.53
1:A:135:HIS:CD2	1:A:149:ARG:H	2.26	0.53
1:G:155:HIS:CD2	1:G:156:GLN:N	2.75	0.52
1:G:195:ASN:OD1	1:G:256:THR:HG22	2.09	0.52
1:A:155:HIS:CD2	1:A:156:GLN:N	2.75	0.52
1:A:182:TYR:OH	1:A:211:SER:HB2	2.10	0.52
1:A:12:VAL:HG12	1:A:112:GLU:HG3	1.92	0.52
1:A:195:ASN:OD1	1:A:256:THR:HG22	2.09	0.52
1:A:119:ASP:HB2	1:A:141:LEU:HD23	1.92	0.52
1:A:78:THR:HG23	1:A:79:GLU:OE2	2.10	0.52
1:G:12:VAL:HG12	1:G:112:GLU:HG3	1.92	0.51
1:G:78:THR:HG23	1:G:79:GLU:OE2	2.10	0.51
1:G:182:TYR:OH	1:G:211:SER:HB2	2.10	0.51
1:G:11:LEU:HD22	1:G:28:TRP:CD1	2.45	0.51
1:A:11:LEU:HD22	1:A:28:TRP:CD1	2.45	0.50
1:G:119:ASP:HB2	1:G:141:LEU:HD23	1.92	0.50
1:G:60:LEU:CD2	1:G:96:VAL:HG22	2.41	0.50
1:A:60:LEU:CD2	1:A:96:VAL:HG22	2.41	0.50
1:G:16:PHE:HE1	1:G:44:HIS:CD2	2.31	0.49
1:G:65:LYS:HD2	1:G:90:LEU:HD12	1.94	0.49
1:A:16:PHE:HE1	1:A:44:HIS:CD2	2.30	0.49
1:A:26:ARG:NH2	4:A:5001[B]:EDO:O2	2.45	0.48
1:A:65:LYS:HD2	1:A:90:LEU:HD12	1.94	0.48
1:G:26:ARG:NH2	4:G:6001[B]:EDO:O2	2.45	0.48

Continued on next page...

Continued from previous page...

Atom-1	Atom-2	Interatomic distance (Å)	Clash overlap (Å)
1:G:36:PHE:HA	1:G:120:VAL:HG23	1.95	0.48
1:A:36:PHE:HA	1:A:120:VAL:HG23	1.95	0.48
1:G:277:THR:HG22	1:G:278:ALA:N	2.29	0.48
1:G:27:SER:HA	1:G:96:VAL:O	2.14	0.47
1:A:7:VAL:HB	1:A:117:ALA:HB2	1.96	0.47
1:G:177:LEU:HD11	1:G:196:ILE:HD11	1.95	0.47
1:G:230:GLN:HG2	1:G:231:THR:N	2.30	0.47
1:A:177:LEU:HD11	1:A:196:ILE:HD11	1.95	0.47
1:G:135:HIS:HD2	1:G:149:ARG:HG3	1.79	0.47
1:A:27:SER:HA	1:A:96:VAL:O	2.14	0.47
1:A:277:THR:HG22	1:A:278:ALA:N	2.29	0.47
1:A:176:PHE:O	1:A:177:LEU:HD23	2.15	0.47
1:A:230:GLN:HG2	1:A:231:THR:N	2.30	0.47
1:G:153:ILE:O	1:G:153:ILE:HG13	2.13	0.47
1:A:12:VAL:CG1	1:A:112:GLU:HG3	2.45	0.47
1:A:135:HIS:HD2	1:A:149:ARG:HG3	1.79	0.47
1:G:12:VAL:CG1	1:G:112:GLU:HG3	2.45	0.46
1:A:215:GLU:HB3	1:A:225:ASP:OD2	2.16	0.46
1:A:40:LEU:HA	1:A:114:PHE:O	2.16	0.46
1:G:7:VAL:HB	1:G:117:ALA:HB2	1.96	0.46
1:G:176:PHE:O	1:G:177:LEU:HD23	2.15	0.46
1:G:215:GLU:HB3	1:G:225:ASP:OD2	2.16	0.46
1:A:153:ILE:O	1:A:153:ILE:HG13	2.13	0.46
1:A:170:PHE:HD1	1:A:195:ASN:O	2.00	0.45
1:G:231:THR:O	1:G:232:ASP:C	2.55	0.45
1:G:208:PHE:CG	1:G:245:PRO:HD2	2.52	0.45
1:A:231:THR:O	1:A:232:ASP:C	2.55	0.45
1:A:208:PHE:CG	1:A:245:PRO:HD2	2.52	0.45
1:G:40:LEU:HA	1:G:114:PHE:O	2.16	0.45
1:G:187:PRO:HB2	1:G:190:SER:OG	2.17	0.44
1:A:153:ILE:HG23	1:A:164:LEU:HD21	1.99	0.44
1:G:170:PHE:HD1	1:G:195:ASN:O	2.00	0.44
1:G:233:LYS:O	1:G:234:ARG:CB	2.66	0.44
1:A:187:PRO:HB2	1:A:190:SER:OG	2.17	0.44
1:A:233:LYS:O	1:A:234:ARG:CB	2.66	0.44
1:G:153:ILE:HG23	1:G:164:LEU:HD21	1.99	0.44
1:A:12:VAL:HG12	1:A:112:GLU:HA	1.99	0.44
1:G:12:VAL:HG12	1:G:112:GLU:HA	1.99	0.44
1:A:155:HIS:CG	1:A:156:GLN:N	2.87	0.43
1:A:136:TYR:HB2	1:A:147:SER:OG	2.19	0.43
1:G:136:TYR:HB2	1:G:147:SER:OG	2.19	0.43

Continued on next page...

Continued from previous page...

Atom-1	Atom-2	Interatomic distance (Å)	Clash overlap (Å)
1:A:215:GLU:HB3	1:A:225:ASP:CG	2.39	0.43
1:G:155:HIS:CG	1:G:156:GLN:N	2.87	0.43
1:A:215:GLU:HB2	1:A:267:HIS:CD2	2.55	0.42
1:G:189:LEU:N	1:G:189:LEU:HD22	2.35	0.42
1:A:170:PHE:CZ	1:A:177:LEU:HD22	2.55	0.42
1:A:189:LEU:N	1:A:189:LEU:HD22	2.35	0.42
1:A:153:ILE:CG2	1:A:164:LEU:HD21	2.50	0.42
1:A:233:LYS:HD3	1:A:233:LYS:HA	1.78	0.42
1:G:153:ILE:CG2	1:G:164:LEU:HD21	2.50	0.42
1:G:215:GLU:HB2	1:G:267:HIS:CD2	2.55	0.42
1:G:170:PHE:CZ	1:G:177:LEU:HD22	2.55	0.41
1:G:134:ASP:HB2	1:G:159:HIS:O	2.20	0.41
1:G:215:GLU:HB3	1:G:225:ASP:CG	2.39	0.41
1:A:16:PHE:HE1	1:A:44:HIS:HD2	1.68	0.41
1:A:134:ASP:HB2	1:A:159:HIS:O	2.20	0.41
1:A:183:PRO:O	1:A:268:THR:HG23	2.21	0.41
1:G:183:PRO:O	1:G:268:THR:HG23	2.21	0.41
1:G:207:ASP:N	1:G:207:ASP:OD2	2.54	0.41
1:A:207:ASP:OD2	1:A:207:ASP:N	2.54	0.41
1:G:273:HIS:ND1	1:G:273:HIS:C	2.75	0.41
1:A:252:SER:HB3	1:A:254:LYS:H	1.86	0.40

All (1) symmetry-related close contacts are listed below. The label for Atom-2 includes the symmetry operator and encoded unit-cell translations to be applied.

Atom-1	Atom-2	Interatomic distance (Å)	Clash overlap (Å)
1:A:155:HIS:NE2	1:G:167:GLY:CA[2_555]	2.18	0.02

5.3 Torsion angles [i](#)

5.3.1 Protein backbone [i](#)

In the following table, the Percentiles column shows the percent Ramachandran outliers of the chain as a percentile score with respect to all X-ray entries followed by that with respect to entries of similar resolution.

The Analysed column shows the number of residues for which the backbone conformation was analysed, and the total number of residues.

Mol	Chain	Analysed	Favoured	Allowed	Outliers	Percentiles	
1	A	247/286 (86%)	217 (88%)	22 (9%)	8 (3%)	4	9
1	G	247/286 (86%)	217 (88%)	22 (9%)	8 (3%)	4	9
All	All	494/572 (86%)	434 (88%)	44 (9%)	16 (3%)	4	9

All (16) Ramachandran outliers are listed below:

Mol	Chain	Res	Type
1	A	234	ARG
1	A	266	ASN
1	G	234	ARG
1	G	266	ASN
1	A	22	ASN
1	A	232	ASP
1	A	265	GLY
1	G	22	ASN
1	G	232	ASP
1	G	265	GLY
1	A	202	PHE
1	G	202	PHE
1	A	252	SER
1	G	252	SER
1	A	233	LYS
1	G	233	LYS

5.3.2 Protein sidechains [i](#)

In the following table, the Percentiles column shows the percent sidechain outliers of the chain as a percentile score with respect to all X-ray entries followed by that with respect to entries of similar resolution.

The Analysed column shows the number of residues for which the sidechain conformation was analysed, and the total number of residues.

Mol	Chain	Analysed	Rotameric	Outliers	Percentiles	
1	A	220/254 (87%)	212 (96%)	8 (4%)	35	64
1	G	220/254 (87%)	212 (96%)	8 (4%)	35	64
All	All	440/508 (87%)	424 (96%)	16 (4%)	35	64

All (16) residues with a non-rotameric sidechain are listed below:

Mol	Chain	Res	Type
1	A	54	GLU
1	A	75	SER
1	A	135	HIS
1	A	180	PRO
1	A	200	GLU
1	A	225	ASP
1	A	240	CYS
1	A	273	HIS
1	G	54	GLU
1	G	75	SER
1	G	135	HIS
1	G	180	PRO
1	G	200	GLU
1	G	225	ASP
1	G	240	CYS
1	G	273	HIS

Some sidechains can be flipped to improve hydrogen bonding and reduce clashes. All (6) such sidechains are listed below:

Mol	Chain	Res	Type
1	A	135	HIS
1	A	155	HIS
1	A	266	ASN
1	G	135	HIS
1	G	155	HIS
1	G	266	ASN

5.3.3 RNA [i](#)

There are no RNA molecules in this entry.

5.4 Non-standard residues in protein, DNA, RNA chains [i](#)

2 non-standard protein/DNA/RNA residues are modelled in this entry.

In the following table, the Counts columns list the number of bonds (or angles) for which Mogul statistics could be retrieved, the number of bonds (or angles) that are observed in the model and the number of bonds (or angles) that are defined in the Chemical Component Dictionary. The Link column lists molecule types, if any, to which the group is linked. The Z score for a bond length (or angle) is the number of standard deviations the observed value is removed from the expected value. A bond length (or angle) with $|Z| > 2$ is considered an outlier worth inspection. RMSZ is the root-mean-square of all Z scores of the bond lengths (or angles).

Mol	Type	Chain	Res	Link	Bond lengths			Bond angles		
					Counts	RMSZ	# Z > 2	Counts	RMSZ	# Z > 2
1	AHB	A	139	1,3	5,8,9	0.57	0	4,10,12	0.76	0
1	AHB	G	139	1,3	5,8,9	0.57	0	4,10,12	0.77	0

In the following table, the Chirals column lists the number of chiral outliers, the number of chiral centers analysed, the number of these observed in the model and the number defined in the Chemical Component Dictionary. Similar counts are reported in the Torsion and Rings columns. '-' means no outliers of that kind were identified.

Mol	Type	Chain	Res	Link	Chirals	Torsions	Rings
1	AHB	A	139	1,3	1/1/3/4	2/9/10/12	-
1	AHB	G	139	1,3	1/1/3/4	2/9/10/12	-

There are no bond length outliers.

There are no bond angle outliers.

All (2) chirality outliers are listed below:

Mol	Chain	Res	Type	Atom
1	A	139	AHB	CB
1	G	139	AHB	CB

All (4) torsion outliers are listed below:

Mol	Chain	Res	Type	Atoms
1	A	139	AHB	O-C-CA-CB
1	G	139	AHB	O-C-CA-CB
1	A	139	AHB	OB-CB-CG-ND2
1	G	139	AHB	OB-CB-CG-ND2

There are no ring outliers.

No monomer is involved in short contacts.

5.5 Carbohydrates [i](#)

There are no monosaccharides in this entry.

5.6 Ligand geometry [i](#)

Of 10 ligands modelled in this entry, 2 are monoatomic - leaving 8 for Mogul analysis.

In the following table, the Counts columns list the number of bonds (or angles) for which Mogul statistics could be retrieved, the number of bonds (or angles) that are observed in the model and the number of bonds (or angles) that are defined in the Chemical Component Dictionary. The Link column lists molecule types, if any, to which the group is linked. The Z score for a bond length (or angle) is the number of standard deviations the observed value is removed from the expected value. A bond length (or angle) with $|Z| > 2$ is considered an outlier worth inspection. RMSZ is the root-mean-square of all Z scores of the bond lengths (or angles).

Mol	Type	Chain	Res	Link	Bond lengths			Bond angles		
					Counts	RMSZ	# Z > 2	Counts	RMSZ	# Z > 2
4	EDO	A	5001[B]	-	3,3,3	0.60	0	2,2,2	0.43	0
4	EDO	A	5001[C]	-	3,3,3	0.60	0	2,2,2	0.44	0
4	EDO	G	6001[C]	-	3,3,3	0.60	0	2,2,2	0.44	0
4	EDO	G	6001[B]	-	3,3,3	0.60	0	2,2,2	0.44	0
4	EDO	G	6001[A]	-	3,3,3	0.59	0	2,2,2	0.44	0
2	NAG	A	1001	1	14,14,15	0.73	0	17,19,21	0.67	0
2	NAG	G	2001	1	14,14,15	0.72	0	17,19,21	0.67	0
4	EDO	A	5001[A]	-	3,3,3	0.59	0	2,2,2	0.44	0

In the following table, the Chirals column lists the number of chiral outliers, the number of chiral centers analysed, the number of these observed in the model and the number defined in the Chemical Component Dictionary. Similar counts are reported in the Torsion and Rings columns. '-' means no outliers of that kind were identified.

Mol	Type	Chain	Res	Link	Chirals	Torsions	Rings
4	EDO	A	5001[B]	-	-	0/1/1/1	-
4	EDO	A	5001[C]	-	-	0/1/1/1	-
4	EDO	G	6001[C]	-	-	0/1/1/1	-
4	EDO	G	6001[B]	-	-	0/1/1/1	-
4	EDO	G	6001[A]	-	-	0/1/1/1	-
2	NAG	A	1001	1	-	4/6/23/26	0/1/1/1
2	NAG	G	2001	1	-	4/6/23/26	0/1/1/1
4	EDO	A	5001[A]	-	-	0/1/1/1	-

There are no bond length outliers.

There are no bond angle outliers.

There are no chirality outliers.

All (8) torsion outliers are listed below:

Mol	Chain	Res	Type	Atoms
2	A	1001	NAG	C8-C7-N2-C2
2	A	1001	NAG	O7-C7-N2-C2
2	G	2001	NAG	C8-C7-N2-C2

Continued on next page...

Continued from previous page...

Mol	Chain	Res	Type	Atoms
2	G	2001	NAG	O7-C7-N2-C2
2	A	1001	NAG	C4-C5-C6-O6
2	G	2001	NAG	C4-C5-C6-O6
2	A	1001	NAG	O5-C5-C6-O6
2	G	2001	NAG	O5-C5-C6-O6

There are no ring outliers.

2 monomers are involved in 4 short contacts:

Mol	Chain	Res	Type	Clashes	Symm-Clashes
4	A	5001[B]	EDO	2	0
4	G	6001[B]	EDO	2	0

5.7 Other polymers [i](#)

There are no such residues in this entry.

5.8 Polymer linkage issues [i](#)

There are no chain breaks in this entry.

6 Fit of model and data [i](#)

6.1 Protein, DNA and RNA chains [i](#)

In the following table, the column labelled ‘#RSRZ> 2’ contains the number (and percentage) of RSRZ outliers, followed by percent RSRZ outliers for the chain as percentile scores relative to all X-ray entries and entries of similar resolution. The OWAB column contains the minimum, median, 95th percentile and maximum values of the occupancy-weighted average B-factor per residue. The column labelled ‘Q< 0.9’ lists the number of (and percentage) of residues with an average occupancy less than 0.9.

Mol	Chain	Analysed	<RSRZ>	#RSRZ>2	OWAB(Å ²)	Q<0.9
1	A	256/286 (89%)	0.01	3 (1%) 79 80	15, 43, 75, 88	0
1	G	256/286 (89%)	0.05	5 (1%) 65 67	15, 43, 75, 88	0
All	All	512/572 (89%)	0.03	8 (1%) 72 74	15, 43, 75, 88	0

All (8) RSRZ outliers are listed below:

Mol	Chain	Res	Type	RSRZ
1	G	167	GLY	4.3
1	A	167	GLY	3.0
1	G	5	GLU	2.7
1	A	5	GLU	2.6
1	G	102	TYR	2.5
1	G	225	ASP	2.3
1	A	102	TYR	2.1
1	G	51	TYR	2.1

6.2 Non-standard residues in protein, DNA, RNA chains [i](#)

In the following table, the Atoms column lists the number of modelled atoms in the group and the number defined in the chemical component dictionary. The B-factors column lists the minimum, median, 95th percentile and maximum values of B factors of atoms in the group. The column labelled ‘Q< 0.9’ lists the number of atoms with occupancy less than 0.9.

Mol	Type	Chain	Res	Atoms	RSCC	RSR	B-factors(Å ²)	Q<0.9
1	AHB	A	139	9/10	0.95	0.16	21,22,25,25	0
1	AHB	G	139	9/10	0.96	0.17	21,22,25,25	0

6.3 Carbohydrates [i](#)

There are no monosaccharides in this entry.

6.4 Ligands [i](#)

In the following table, the Atoms column lists the number of modelled atoms in the group and the number defined in the chemical component dictionary. The B-factors column lists the minimum, median, 95th percentile and maximum values of B factors of atoms in the group. The column labelled 'Q<0.9' lists the number of atoms with occupancy less than 0.9.

Mol	Type	Chain	Res	Atoms	RSCC	RSR	B-factors(Å ²)	Q<0.9
2	NAG	G	2001	14/15	0.75	0.28	68,72,73,74	0
2	NAG	A	1001	14/15	0.80	0.25	68,72,73,74	0
4	EDO	G	6001[B]	4/4	0.92	0.23	9,11,11,12	4
4	EDO	G	6001[C]	4/4	0.92	0.23	42,42,42,43	4
4	EDO	G	6001[A]	4/4	0.92	0.23	19,20,20,21	4
4	EDO	A	5001[B]	4/4	0.92	0.23	9,11,11,12	4
4	EDO	A	5001[C]	4/4	0.92	0.23	42,42,42,43	4
4	EDO	A	5001[A]	4/4	0.92	0.23	19,20,20,21	4
3	CA	G	4001	1/1	0.98	0.09	42,42,42,42	0
3	CA	A	3001	1/1	0.99	0.09	42,42,42,42	0

6.5 Other polymers [i](#)

There are no such residues in this entry.