



Full wwPDB X-ray Structure Validation Report ⓘ

Oct 16, 2021 – 09:02 PM EDT

PDB ID : 1NXG
Title : The F383A variant of type II Citrate Synthase complexed with NADH
Authors : Maurus, R.; Nguyen, N.T.; Stokell, D.J.; Ayed, A.; Hultin, P.G.; Duckworth, H.W.; Brayer, G.D.
Deposited on : 2003-02-10
Resolution : 2.50 Å(reported)

This is a Full wwPDB X-ray Structure Validation Report for a publicly released PDB entry.

We welcome your comments at validation@mail.wwpdb.org

A user guide is available at

<https://www.wwpdb.org/validation/2017/XrayValidationReportHelp>

with specific help available everywhere you see the ⓘ symbol.

The following versions of software and data (see [references ⓘ](#)) were used in the production of this report:

MolProbity : 4.02b-467
Mogul : 1.8.5 (274361), CSD as541be (2020)
Xtrriage (Phenix) : **NOT EXECUTED**
EDS : **NOT EXECUTED**
buster-report : 1.1.7 (2018)
Percentile statistics : 20191225.v01 (using entries in the PDB archive December 25th 2019)
Ideal geometry (proteins) : Engh & Huber (2001)
Ideal geometry (DNA, RNA) : Parkinson et al. (1996)
Validation Pipeline (wwPDB-VP) : 2.23.2

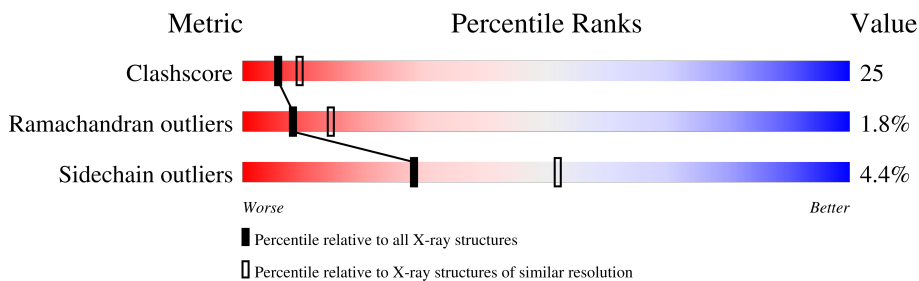
1 Overall quality at a glance

The following experimental techniques were used to determine the structure:

X-RAY DIFFRACTION

The reported resolution of this entry is 2.50 Å.

Percentile scores (ranging between 0-100) for global validation metrics of the entry are shown in the following graphic. The table shows the number of entries on which the scores are based.



Metric	Whole archive (#Entries)	Similar resolution (#Entries, resolution range(Å))
Clashscore	141614	5346 (2.50-2.50)
Ramachandran outliers	138981	5231 (2.50-2.50)
Sidechain outliers	138945	5233 (2.50-2.50)

The table below summarises the geometric issues observed across the polymeric chains and their fit to the electron density. The red, orange, yellow and green segments of the lower bar indicate the fraction of residues that contain outliers for ≥ 3 , 2, 1 and 0 types of geometric quality criteria respectively. A grey segment represents the fraction of residues that are not modelled. The numeric value for each fraction is indicated below the corresponding segment, with a dot representing fractions $\leq 5\%$.

Note EDS was not executed.

Mol	Chain	Length	Quality of chain
1	A	427	62% 34% .
1	B	427	56% 40% .

The following table lists non-polymeric compounds, carbohydrate monomers and non-standard residues in protein, DNA, RNA chains that are outliers for geometric or electron-density-fit criteria:

Mol	Type	Chain	Res	Chirality	Geometry	Clashes	Electron density
2	SO4	B	2001	-	X	-	-
2	SO4	B	2003	-	X	-	-

2 Entry composition [i](#)

There are 4 unique types of molecules in this entry. The entry contains 7409 atoms, of which 0 are hydrogens and 0 are deuteriums.

In the tables below, the ZeroOcc column contains the number of atoms modelled with zero occupancy, the AltConf column contains the number of residues with at least one atom in alternate conformation and the Trace column contains the number of residues modelled with at most 2 atoms.

- Molecule 1 is a protein called Citrate synthase.

Mol	Chain	Residues	Atoms					ZeroOcc	AltConf	Trace
			Total	C	N	O	S			
1	A	426	3359	2129	579	626	25	0	0	0
1	B	426	3360	2129	579	627	25	0	0	0

There are 2 discrepancies between the modelled and reference sequences:

Chain	Residue	Modelled	Actual	Comment	Reference
A	383	ALA	PHE	engineered mutation	UNP P0ABH7
B	1383	ALA	PHE	engineered mutation	UNP P0ABH7

- Molecule 2 is SULFATE ION (three-letter code: SO4) (formula: O₄S).



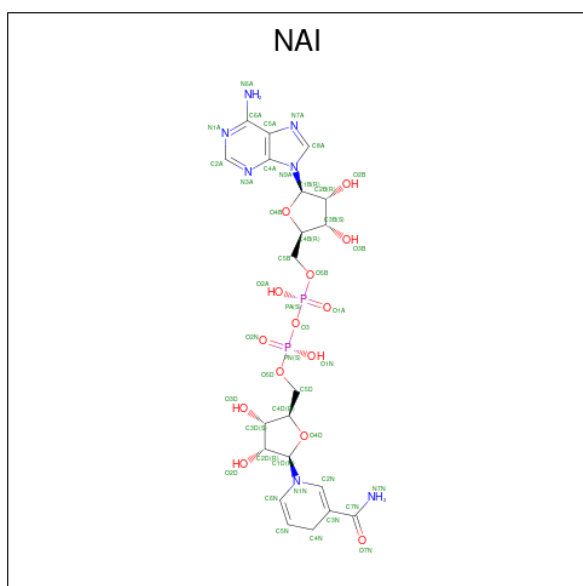
Mol	Chain	Residues	Atoms			ZeroOcc	AltConf
			Total	O	S		
2	A	1	5	4	1	0	0

Continued on next page...

Continued from previous page...

Mol	Chain	Residues	Atoms	ZeroOcc	AltConf
2	A	1	Total O S 5 4 1	0	0
2	B	1	Total O S 5 4 1	0	0
2	B	1	Total O S 5 4 1	0	0

- Molecule 3 is 1,4-DIHYDRONICOTINAMIDE ADENINE DINUCLEOTIDE (three-letter code: NAI) (formula: C₂₁H₂₉N₇O₁₄P₂).



Mol	Chain	Residues	Atoms	ZeroOcc	AltConf
3	A	1	Total C N O P 44 21 7 14 2	0	0
3	B	1	Total C N O P 44 21 7 14 2	0	0

- Molecule 4 is water.

Mol	Chain	Residues	Atoms	ZeroOcc	AltConf
4	A	293	Total O 293 293	0	0
4	B	289	Total O 289 289	0	0

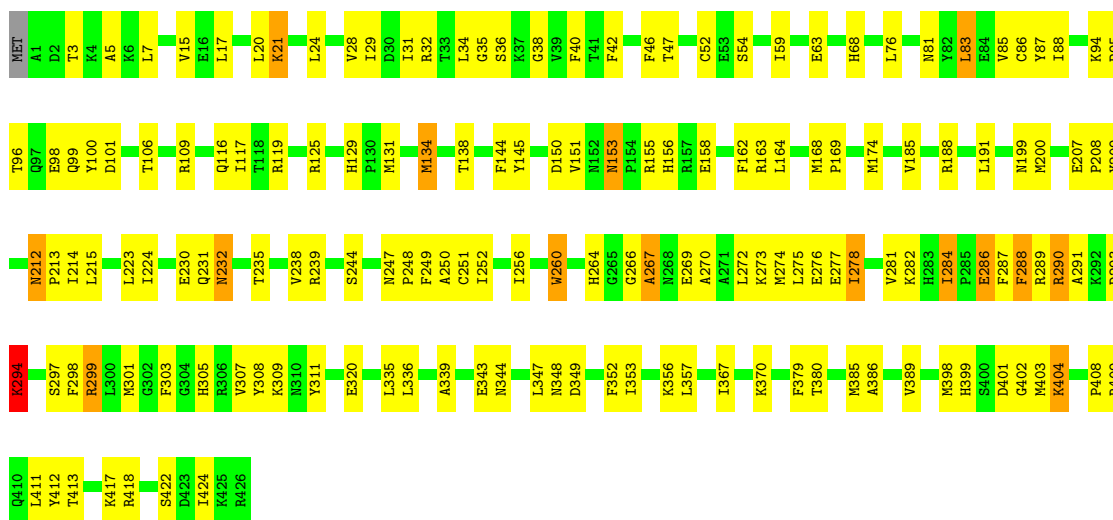
3 Residue-property plots [i](#)

These plots are drawn for all protein, RNA, DNA and oligosaccharide chains in the entry. The first graphic for a chain summarises the proportions of the various outlier classes displayed in the second graphic. The second graphic shows the sequence view annotated by issues in geometry. Residues are color-coded according to the number of geometric quality criteria for which they contain at least one outlier: green = 0, yellow = 1, orange = 2 and red = 3 or more. Stretches of 2 or more consecutive residues without any outlier are shown as a green connector. Residues present in the sample, but not in the model, are shown in grey.

Note EDS was not executed.

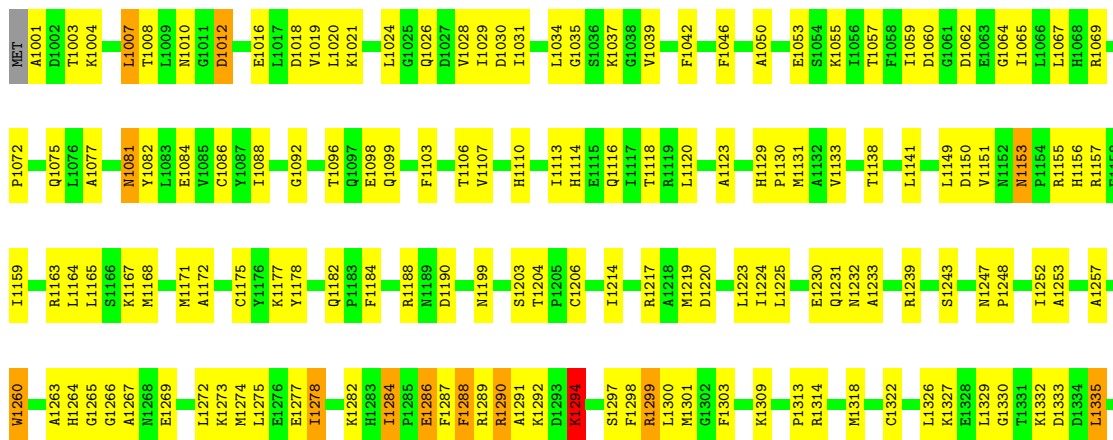
- Molecule 1: Citrate synthase

Chain A: 



- Molecule 1: Citrate synthase

Chain B: 



A1339	T1345	D1349	E1354	V1361	S1365	I1367	T1380	A1386	H1395	H1399	K1404	P1408	K1421	S1422	I1424	K1425
A1346	P1350	I1353	K1355		G1366	L1368	V1381	R1387	W1390		I1405	R1409				R1426
A1351	Y1351	F1352	L1356	V1361	I1367	L1369	V1389	T1388	I1391	H1399	I1405	E1416	K1421	D1423	K1425	
F1352			L1357		I1367	L1370		V1389	I1392							
I1353					G1366	A1371	T1380	G1390	W1391							
E1354					I1367	M1372	V1381	I1391	I1392							
K1355					I1367											
L1356					G1366											
L1357					I1367											
V1361					I1367											
S1365					G1366											
G1366					I1367											
I1367					I1367											
L1368					I1367											
L1369					G1366											
K1370					I1367											
A1371					I1367											
M1372					G1366											
T1380					I1367											
V1381					G1366											
A1386					I1367											
R1387					G1366											
T1388					I1367											
V1389					G1366											
G1390					I1367											
W1391					G1366											
I1392					I1367											
W1395					G1366											
H1399					I1367											
K1404					G1366											
I1405					I1367											
P1408					G1366											
R1409					I1367											
E1416					G1366											
K1421					I1367											
S1422					G1366											
D1423					I1367											
I1424					G1366											
K1425					I1367											
R1426					G1366											

4 Data and refinement statistics

Xtrriage (Phenix) and EDS were not executed - this section is therefore incomplete.

Property	Value	Source
Space group	H 3	Depositor
Cell constants a, b, c, α , β , γ	164.89Å 164.89Å 158.86Å 90.00° 90.00° 120.00°	Depositor
Resolution (Å)	10.00 – 2.50	Depositor
% Data completeness (in resolution range)	(Not available) (10.00-2.50)	Depositor
R_{merge}	(Not available)	Depositor
R_{sym}	(Not available)	Depositor
Refinement program	CNS	Depositor
R, R_{free}	0.187 , (Not available)	Depositor
Estimated twinning fraction	No twinning to report.	Xtrriage
Total number of atoms	7409	wwPDB-VP
Average B, all atoms (Å ²)	34.0	wwPDB-VP

5 Model quality [i](#)

5.1 Standard geometry [i](#)

Bond lengths and bond angles in the following residue types are not validated in this section: SO4, NAI

The Z score for a bond length (or angle) is the number of standard deviations the observed value is removed from the expected value. A bond length (or angle) with $|Z| > 5$ is considered an outlier worth inspection. RMSZ is the root-mean-square of all Z scores of the bond lengths (or angles).

Mol	Chain	Bond lengths		Bond angles	
		RMSZ	# Z >5	RMSZ	# Z >5
1	A	0.38	0/3436	0.67	0/4645
1	B	0.37	0/3437	0.67	1/4645 (0.0%)
All	All	0.37	0/6873	0.67	1/9290 (0.0%)

There are no bond length outliers.

All (1) bond angle outliers are listed below:

Mol	Chain	Res	Type	Atoms	Z	Observed(°)	Ideal(°)
1	B	1165	LEU	CB-CG-CD1	-6.45	100.03	111.00

There are no chirality outliers.

There are no planarity outliers.

5.2 Too-close contacts [i](#)

In the following table, the Non-H and H(model) columns list the number of non-hydrogen atoms and hydrogen atoms in the chain respectively. The H(added) column lists the number of hydrogen atoms added and optimized by MolProbity. The Clashes column lists the number of clashes within the asymmetric unit, whereas Symm-Clashes lists symmetry-related clashes.

Mol	Chain	Non-H	H(model)	H(added)	Clashes	Symm-Clashes
1	A	3359	0	3309	172	0
1	B	3360	0	3306	189	0
2	A	10	0	0	0	0
2	B	10	0	0	0	0
3	A	44	0	27	6	0
3	B	44	0	27	1	0
4	A	293	0	0	19	0
4	B	289	0	0	17	0

Continued on next page...

Continued from previous page...

Mol	Chain	Non-H	H(model)	H(added)	Clashes	Symm-Clashes
All	All	7409	0	6669	339	0

The all-atom clashscore is defined as the number of clashes found per 1000 atoms (including hydrogen atoms). The all-atom clashscore for this structure is 25.

All (339) close contacts within the same asymmetric unit are listed below, sorted by their clash magnitude.

Atom-1	Atom-2	Interatomic distance (Å)	Clash overlap (Å)
1:A:404:LYS:H	1:A:404:LYS:HD3	1.16	1.06
1:B:1081:ASN:ND2	1:B:1084:GLU:H	1.67	0.91
1:B:1272:LEU:HA	1:B:1275:LEU:HG	1.55	0.88
1:B:1287:PHE:HA	1:B:1291:ALA:HB3	1.58	0.86
1:A:275:LEU:HD22	1:A:289:ARG:HE	1.39	0.85
1:A:96:THR:H	1:A:99:GLN:HE21	1.24	0.85
1:A:287:PHE:HA	1:A:291:ALA:HB3	1.61	0.82
1:A:282:LYS:HA	1:A:288:PHE:HD2	1.45	0.81
1:B:1129:HIS:CD2	1:B:1131:MET:H	1.99	0.81
1:A:309:LYS:NZ	1:A:356:LYS:HE3	1.96	0.80
1:B:1275:LEU:HD22	1:B:1289:ARG:HE	1.46	0.80
3:A:3000:NAI:O3	3:A:3000:NAI:H3B	1.83	0.79
1:A:404:LYS:HD3	1:A:404:LYS:N	1.96	0.79
1:B:1335:LEU:H	1:B:1335:LEU:HD23	1.49	0.77
1:A:305:HIS:HD2	1:A:307:VAL:H	1.31	0.76
1:A:294:LYS:HB3	1:A:301:MET:HE3	1.68	0.76
1:A:158:GLU:HG2	4:A:3008:HOH:O	1.85	0.76
1:B:1282:LYS:HA	1:B:1288:PHE:HD2	1.51	0.76
1:A:274:MET:HG3	1:A:293:ASP:HA	1.67	0.75
1:A:52:CYS:SG	4:A:3233:HOH:O	2.43	0.75
1:A:269:GLU:HA	1:A:272:LEU:HB2	1.70	0.74
1:A:101:ASP:HA	1:B:1426:ARG:HH21	1.52	0.74
1:B:1129:HIS:HD2	1:B:1131:MET:H	1.32	0.73
1:B:1113:ILE:HA	4:B:49:HOH:O	1.87	0.73
1:B:1230:GLU:HG2	1:B:1231:GLN:H	1.55	0.72
1:A:85:VAL:HG21	1:A:224:ILE:HG23	1.70	0.72
1:B:1339:ALA:HB1	1:B:1367:ILE:HD13	1.71	0.71
1:B:1004:LYS:HB3	1:B:1021:LYS:HD3	1.71	0.71
1:B:1081:ASN:HD21	1:B:1084:GLU:H	1.34	0.71
1:A:129:HIS:CD2	1:A:131:MET:H	2.09	0.71
1:B:1077:ALA:HA	1:B:1224:ILE:HG21	1.71	0.71
1:A:188:ARG:HB2	1:A:191:LEU:HD12	1.72	0.70
1:A:129:HIS:HD2	1:A:131:MET:H	1.37	0.70

Continued on next page...

Continued from previous page...

Atom-1	Atom-2	Interatomic distance (Å)	Clash overlap (Å)
1:B:1123:ALA:HB3	4:B:187:HOH:O	1.92	0.70
1:A:272:LEU:HA	1:A:275:LEU:HG	1.74	0.70
1:A:305:HIS:CD2	1:A:307:VAL:H	2.10	0.69
1:A:117:ILE:HG13	4:A:3062:HOH:O	1.93	0.68
1:A:404:LYS:H	1:A:404:LYS:CD	2.00	0.68
1:A:100:TYR:HE1	1:B:1426:ARG:HB3	1.58	0.68
1:A:145:TYR:HE1	3:A:3000:NAI:O2A	1.76	0.68
1:A:249:PHE:HE2	4:A:3292:HOH:O	1.77	0.67
1:A:252:ILE:O	1:A:256:ILE:HG13	1.94	0.67
1:A:163:ARG:HB2	4:A:3292:HOH:O	1.93	0.67
1:B:1290:ARG:HB2	4:B:24:HOH:O	1.95	0.66
1:B:1188:ARG:HG2	4:B:165:HOH:O	1.95	0.66
1:B:1230:GLU:CG	1:B:1231:GLN:H	2.09	0.65
1:B:1388:THR:O	1:B:1392:ILE:HG13	1.96	0.65
1:A:47:THR:HG22	1:B:1409:ARG:HH11	1.62	0.64
1:A:100:TYR:CE1	1:B:1426:ARG:HB3	2.33	0.64
1:B:1289:ARG:HA	4:B:324:HOH:O	1.96	0.64
1:A:7:LEU:HB2	1:B:1010:ASN:O	1.98	0.63
1:A:129:HIS:HD2	1:A:131:MET:N	1.97	0.63
1:B:1303:PHE:HB3	1:B:1357:LEU:HB3	1.80	0.63
1:A:116:GLN:HB3	4:A:3062:HOH:O	1.99	0.63
1:A:244:SER:HB3	1:B:1233:ALA:HB1	1.80	0.63
1:B:1007:LEU:HD21	1:B:1029:ILE:HG23	1.81	0.62
1:B:1008:THR:HG22	1:B:1016:GLU:HG2	1.81	0.62
1:A:282:LYS:HA	1:A:288:PHE:CD2	2.33	0.62
1:B:1020:LEU:HD22	1:B:1020:LEU:H	1.65	0.62
1:B:1248:PRO:HG3	1:B:1395:TRP:CH2	2.35	0.61
1:B:1284:ILE:HD12	1:B:1287:PHE:H	1.65	0.61
1:A:232:ASN:ND2	1:A:235:THR:H	1.99	0.61
1:B:1288:PHE:HD1	1:B:1288:PHE:O	1.84	0.61
1:A:298:PHE:HB2	1:A:301:MET:HG3	1.82	0.60
1:B:1062:ASP:HA	1:B:1309:LYS:HB2	1.83	0.60
1:A:164:LEU:HG	4:A:3292:HOH:O	2.01	0.60
1:A:269:GLU:O	1:A:273:LYS:HB2	2.02	0.60
1:B:1272:LEU:HA	1:B:1275:LEU:CG	2.31	0.59
1:B:1352:PHE:HA	1:B:1357:LEU:HD12	1.83	0.59
1:B:1103:PHE:O	1:B:1107:VAL:HG23	2.03	0.59
1:A:309:LYS:HZ3	1:A:356:LYS:HE3	1.67	0.59
1:B:1081:ASN:C	1:B:1081:ASN:HD22	2.05	0.59
1:A:418:ARG:O	1:B:1072:PRO:HD3	2.02	0.59
1:B:1269:GLU:O	1:B:1273:LYS:HB2	2.03	0.58

Continued on next page...

Continued from previous page...

Atom-1	Atom-2	Interatomic distance (Å)	Clash overlap (Å)
1:B:1082:TYR:CD1	1:B:1223:LEU:HB3	2.39	0.58
1:A:169:PRO:HG2	4:A:3124:HOH:O	2.03	0.58
1:B:1220:ASP:O	1:B:1224:ILE:HG13	2.01	0.58
1:B:1248:PRO:HG3	1:B:1395:TRP:CZ2	2.38	0.58
1:A:398:MET:SD	1:A:403:MET:HG3	2.42	0.58
1:B:1368:ILE:O	1:B:1372:MET:HG3	2.03	0.58
1:A:153:ASN:HD22	1:A:155:ARG:H	1.52	0.58
1:A:199:ASN:HD22	1:A:209:TYR:HD1	1.50	0.58
1:A:284:ILE:HD12	1:A:287:PHE:H	1.69	0.57
1:B:1164:LEU:HD13	1:B:1252:ILE:HG13	1.86	0.57
1:B:1120:LEU:HD12	4:B:187:HOH:O	2.05	0.57
1:B:1269:GLU:HA	1:B:1272:LEU:HB2	1.86	0.57
1:B:1278:ILE:HD13	1:B:1278:ILE:O	2.05	0.57
1:A:54:SER:HB2	4:A:3233:HOH:O	2.05	0.57
1:A:101:ASP:HA	1:B:1426:ARG:NH2	2.19	0.57
1:B:1069:ARG:CD	1:B:1092:GLY:HA2	2.35	0.57
1:B:1072:PRO:HG2	1:B:1075:GLN:HE21	1.69	0.57
1:A:370:LYS:HG3	1:A:379:PHE:HZ	1.69	0.57
1:B:1069:ARG:HD2	1:B:1092:GLY:HA2	1.85	0.57
1:A:7:LEU:HD21	1:A:29:ILE:HG12	1.87	0.56
1:A:275:LEU:HD22	1:A:289:ARG:NE	2.16	0.56
1:A:298:PHE:HD2	1:A:301:MET:HE1	1.70	0.56
1:B:1177:LYS:NZ	1:B:1182:GLN:HE21	2.04	0.56
1:A:267:ALA:HB3	1:A:270:ALA:HB2	1.88	0.56
1:A:212:ASN:HD22	1:A:213:PRO:N	2.03	0.56
1:A:305:HIS:CD2	1:A:307:VAL:HB	2.41	0.56
1:A:96:THR:HG23	1:A:99:GLN:NE2	2.21	0.55
1:A:21:LYS:HE2	1:A:21:LYS:H	1.72	0.55
1:B:1294:LYS:HB2	1:B:1297:SER:HA	1.87	0.55
1:A:230:GLU:CG	1:A:231:GLN:H	2.19	0.55
1:A:281:VAL:HG11	4:A:3270:HOH:O	2.05	0.55
1:A:289:ARG:HG2	1:A:290:ARG:H	1.71	0.55
1:A:408:PRO:HA	1:B:1046:PHE:O	2.07	0.55
1:B:1062:ASP:HA	1:B:1309:LYS:CB	2.37	0.55
1:A:278:ILE:HD13	1:A:278:ILE:O	2.07	0.55
1:A:131:MET:HG2	1:A:260:TRP:CD2	2.43	0.54
1:A:352:PHE:HA	1:A:357:LEU:HD23	1.89	0.54
1:A:153:ASN:ND2	1:A:155:ARG:H	2.05	0.54
1:A:299:ARG:HA	1:A:303:PHE:O	2.07	0.54
1:B:1219:MET:O	1:B:1223:LEU:HD13	2.07	0.54
1:B:1012:ASP:HA	4:B:78:HOH:O	2.07	0.54

Continued on next page...

Continued from previous page...

Atom-1	Atom-2	Interatomic distance (Å)	Clash overlap (Å)
1:B:1020:LEU:CD2	1:B:1030:ASP:HB2	2.39	0.53
1:B:1204:THR:HG22	1:B:1206:CYS:H	1.73	0.53
1:A:289:ARG:HG2	1:A:290:ARG:N	2.24	0.53
1:B:1303:PHE:CE1	1:B:1346:ALA:HB2	2.44	0.53
1:A:20:LEU:HB2	1:A:28:VAL:HG23	1.90	0.53
1:B:1019:VAL:HA	1:B:1028:VAL:O	2.08	0.53
1:A:153:ASN:HD21	1:A:155:ARG:HD3	1.73	0.53
1:B:1289:ARG:HG2	1:B:1290:ARG:H	1.73	0.53
1:A:47:THR:O	1:B:1409:ARG:NE	2.42	0.52
1:B:1057:THR:HG23	1:B:1067:LEU:O	2.08	0.52
1:B:1151:VAL:HB	1:B:1399:HIS:CE1	2.45	0.52
1:A:223:LEU:CD2	1:A:386:ALA:HB2	2.40	0.52
1:A:212:ASN:ND2	1:A:214:ILE:H	2.07	0.52
1:A:278:ILE:O	1:A:282:LYS:HB3	2.10	0.52
1:A:145:TYR:CE1	3:A:3000:NAI:O2A	2.61	0.52
1:B:1177:LYS:NZ	1:B:1182:GLN:NE2	2.58	0.52
3:A:3000:NAI:H42N	4:A:3008:HOH:O	2.10	0.52
1:B:1035:GLY:C	1:B:1037:LYS:H	2.13	0.52
1:B:1230:GLU:HG2	1:B:1231:GLN:N	2.24	0.52
1:B:1034:LEU:HD22	1:B:1039:VAL:CG1	2.40	0.51
1:B:1243:SER:HB2	1:B:1405:ILE:HA	1.92	0.51
1:B:1345:ILE:HG23	1:B:1349:ASP:HB2	1.92	0.51
1:A:169:PRO:HA	1:A:385:MET:SD	2.50	0.51
3:A:3000:NAI:H51A	3:A:3000:NAI:H8A	1.93	0.51
1:A:275:LEU:HA	1:A:289:ARG:HG3	1.93	0.51
1:B:1069:ARG:NE	1:B:1092:GLY:HA2	2.26	0.51
1:A:68:HIS:HB2	1:A:76:LEU:HD11	1.91	0.51
1:A:212:ASN:HB3	1:A:215:LEU:HG	1.91	0.51
1:B:1275:LEU:HD22	4:B:24:HOH:O	2.09	0.51
1:A:232:ASN:C	1:A:232:ASN:HD22	2.13	0.51
1:B:1020:LEU:HD21	1:B:1030:ASP:HB2	1.92	0.51
1:B:1422:SER:OG	1:B:1424:ILE:HG12	2.11	0.51
1:A:36:SER:C	1:A:38:GLY:H	2.14	0.50
1:B:1081:ASN:HD22	1:B:1084:GLU:H	1.57	0.50
1:B:1351:TYR:O	1:B:1355:LYS:HD3	2.11	0.50
1:A:223:LEU:HD22	1:A:386:ALA:HB2	1.94	0.50
1:A:335:LEU:HD23	1:A:335:LEU:H	1.76	0.50
1:B:1096:THR:H	1:B:1099:GLN:HB2	1.76	0.50
1:B:1204:THR:CG2	1:B:1206:CYS:SG	3.00	0.50
1:A:134:MET:HA	1:A:134:MET:HE2	1.93	0.50
1:A:288:PHE:CD1	1:A:288:PHE:O	2.64	0.50

Continued on next page...

Continued from previous page...

Atom-1	Atom-2	Interatomic distance (Å)	Clash overlap (Å)
1:B:1081:ASN:HD21	1:B:1084:GLU:N	2.04	0.50
1:B:1327:LYS:O	1:B:1327:LYS:HG2	2.11	0.50
1:A:153:ASN:HD22	1:A:155:ARG:N	2.10	0.50
1:B:1133:VAL:HG21	4:B:96:HOH:O	2.12	0.50
1:B:1287:PHE:HA	1:B:1291:ALA:CB	2.37	0.50
1:B:1288:PHE:O	1:B:1288:PHE:CD1	2.65	0.50
1:B:1289:ARG:HG2	1:B:1290:ARG:N	2.27	0.50
1:A:288:PHE:O	1:A:288:PHE:HD1	1.94	0.50
1:B:1167:LYS:HE3	3:B:3001:NAI:O2N	2.11	0.50
1:B:1365:SER:O	1:B:1369:LEU:HG	2.12	0.50
1:A:343:GLU:O	1:A:347:LEU:HG	2.13	0.49
1:A:46:PHE:O	1:B:1408:PRO:HA	2.12	0.49
1:B:1060:ASP:HB3	1:B:1065:ILE:HB	1.95	0.49
1:A:131:MET:HE2	1:A:380:THR:HB	1.95	0.49
1:A:277:GLU:O	1:A:281:VAL:HG22	2.12	0.49
1:B:1007:LEU:HD22	1:B:1029:ILE:HG12	1.95	0.49
1:B:1287:PHE:O	1:B:1292:LYS:HB2	2.12	0.49
1:B:1354:GLU:HB3	1:B:1355:LYS:HD2	1.95	0.49
1:B:1387:ARG:HG3	1:B:1391:TRP:CE2	2.48	0.49
1:B:1086:CYS:SG	1:B:1389:VAL:HG21	2.52	0.49
1:B:1260:TRP:HA	4:B:321:HOH:O	2.13	0.49
1:A:336:LEU:HG	4:A:3151:HOH:O	2.12	0.48
1:A:409:ARG:HB2	1:B:1050:ALA:HA	1.94	0.48
1:A:174:MET:HG3	4:A:3030:HOH:O	2.12	0.48
1:A:272:LEU:HA	1:A:275:LEU:CG	2.42	0.48
1:A:349:ASP:HB3	1:A:352:PHE:CD1	2.48	0.48
1:B:1164:LEU:O	1:B:1168:MET:HG2	2.13	0.48
1:A:88:ILE:HG12	1:A:94:LYS:HA	1.95	0.48
1:A:207:GLU:HB2	1:A:208:PRO:HD2	1.96	0.48
1:A:150:ASP:HB3	1:A:156:HIS:CD2	2.48	0.48
1:B:1322:CYS:O	1:B:1326:LEU:HD13	2.14	0.48
1:A:151:VAL:HB	1:A:399:HIS:CE1	2.48	0.48
1:A:230:GLU:HG2	1:A:231:GLN:H	1.78	0.48
1:B:1204:THR:HG22	1:B:1206:CYS:SG	2.54	0.48
1:A:81:ASN:HA	1:A:224:ILE:HD11	1.94	0.47
1:A:29:ILE:O	1:A:31:ILE:HG23	2.14	0.47
1:A:35:GLY:HA2	1:A:40:PHE:CE2	2.49	0.47
1:B:1294:LYS:NZ	1:B:1298:PHE:H	2.12	0.47
1:A:15:VAL:HA	4:A:3205:HOH:O	2.13	0.47
1:B:1243:SER:O	1:B:1405:ILE:HG12	2.14	0.47
1:A:290:ARG:HG2	1:A:290:ARG:O	2.14	0.47

Continued on next page...

Continued from previous page...

Atom-1	Atom-2	Interatomic distance (Å)	Clash overlap (Å)
1:B:1326:LEU:HG	1:B:1333:ASP:OD1	2.15	0.47
1:A:164:LEU:HD22	1:A:168:MET:HE3	1.97	0.47
1:B:1303:PHE:HE1	1:B:1346:ALA:HB2	1.79	0.47
1:B:1214:ILE:HG12	1:B:1217:ARG:NH1	2.29	0.47
1:B:1269:GLU:HB2	1:B:1273:LYS:CA	2.44	0.47
1:B:1300:LEU:HD13	1:B:1300:LEU:O	2.15	0.47
1:A:153:ASN:HD22	1:A:153:ASN:C	2.19	0.47
1:B:1264:HIS:ND1	1:B:1265:GLY:N	2.63	0.47
1:A:212:ASN:HD22	1:A:212:ASN:C	2.17	0.47
1:A:399:HIS:NE2	1:A:403:MET:SD	2.88	0.47
1:B:1277:GLU:HA	4:B:246:HOH:O	2.14	0.47
1:A:7:LEU:HD12	1:A:17:LEU:HB2	1.97	0.46
1:A:266:GLY:O	1:A:267:ALA:HB2	2.16	0.46
1:A:413:THR:HB	1:B:1055:LYS:NZ	2.31	0.46
1:B:1113:ILE:HD13	1:B:1118:THR:OG1	2.15	0.46
1:B:1149:LEU:HD22	1:B:1247:ASN:HB2	1.96	0.46
1:A:239:ARG:HD3	4:A:3022:HOH:O	2.15	0.46
1:B:1069:ARG:HG3	1:B:1088:ILE:HG22	1.98	0.46
1:B:1153:ASN:C	1:B:1153:ASN:HD22	2.19	0.46
1:B:1275:LEU:HA	1:B:1289:ARG:HG3	1.98	0.46
1:B:1272:LEU:CA	1:B:1275:LEU:HG	2.36	0.46
1:B:1290:ARG:O	1:B:1290:ARG:HG2	2.15	0.46
1:A:212:ASN:HD22	1:A:213:PRO:CD	2.29	0.46
1:A:96:THR:OG1	1:A:99:GLN:HG3	2.16	0.46
1:A:185:VAL:HB	1:A:200:MET:HA	1.98	0.46
1:A:370:LYS:HG3	1:A:379:PHE:CZ	2.49	0.46
1:B:1355:LYS:HD2	1:B:1355:LYS:N	2.31	0.46
1:A:289:ARG:CG	1:A:290:ARG:H	2.28	0.46
1:A:344:ASN:OD1	1:A:348:ASN:ND2	2.49	0.46
1:B:1404:LYS:HE3	4:B:154:HOH:O	2.15	0.46
1:A:24:LEU:HD11	1:B:1416:GLU:HA	1.99	0.45
1:A:162:PHE:HB3	4:A:3144:HOH:O	2.15	0.45
1:A:94:LYS:NZ	1:B:1421:LYS:O	2.41	0.45
1:B:1141:LEU:HD21	1:B:1171:MET:HE2	1.98	0.45
1:B:1188:ARG:HB3	1:B:1190:ASP:OD1	2.15	0.45
1:A:3:THR:C	1:A:5:ALA:H	2.20	0.45
1:B:1157:ARG:NH2	4:B:337:HOH:O	2.49	0.45
1:A:290:ARG:HA	1:A:293:ASP:CB	2.47	0.45
1:A:411:LEU:HD23	1:B:1028:VAL:HG22	1.98	0.45
1:A:59:ILE:HG21	1:A:307:VAL:CG1	2.46	0.45
1:B:1282:LYS:HA	1:B:1288:PHE:CD2	2.41	0.45

Continued on next page...

Continued from previous page...

Atom-1	Atom-2	Interatomic distance (Å)	Clash overlap (Å)
1:B:1266:GLY:O	1:B:1267:ALA:HB2	2.17	0.44
1:B:1269:GLU:HB2	1:B:1273:LYS:HB2	1.98	0.44
1:A:247:ASN:HB2	1:A:248:PRO:HD2	2.00	0.44
1:B:1064:GLY:O	1:B:1313:PRO:HB3	2.18	0.44
1:B:1159:ILE:O	1:B:1163:ARG:HG3	2.17	0.44
1:B:1225:LEU:HD12	1:B:1318:MET:SD	2.58	0.44
1:A:138:THR:HG21	1:A:252:ILE:HG22	1.99	0.44
1:A:308:TYR:HB3	1:A:311:TYR:O	2.17	0.44
1:B:1167:LYS:O	1:B:1171:MET:HB2	2.17	0.44
1:A:42:PHE:HB2	1:B:1028:VAL:CG2	2.47	0.44
1:A:370:LYS:HE3	1:A:379:PHE:HE1	1.82	0.44
1:B:1231:GLN:HE22	1:B:1239:ARG:NE	2.15	0.44
1:A:32:ARG:HD2	1:B:1042:PHE:CD1	2.53	0.44
1:A:298:PHE:CD2	1:A:301:MET:HE1	2.53	0.44
1:A:412:TYR:HD1	1:B:1024:LEU:HB2	1.83	0.44
1:A:286:GLU:OE1	1:A:291:ALA:HB2	2.18	0.44
1:A:117:ILE:HG12	1:A:144:PHE:CD1	2.53	0.44
1:A:411:LEU:O	1:B:1053:GLU:HG3	2.18	0.43
1:A:272:LEU:HD12	1:A:272:LEU:N	2.33	0.43
1:A:288:PHE:HD1	1:A:288:PHE:H	1.66	0.43
1:B:1034:LEU:HD22	1:B:1039:VAL:HG11	2.00	0.43
1:B:1230:GLU:CG	1:B:1231:GLN:N	2.79	0.43
1:A:275:LEU:CD2	1:A:289:ARG:HE	2.21	0.43
1:B:1069:ARG:HG3	1:B:1088:ILE:CG2	2.49	0.43
1:B:1106:THR:O	1:B:1110:HIS:HD2	2.02	0.43
1:A:150:ASP:H	1:A:156:HIS:HD2	1.64	0.43
1:A:287:PHE:HA	1:A:291:ALA:CB	2.41	0.43
1:A:290:ARG:HA	1:A:293:ASP:HB2	2.00	0.43
1:A:412:TYR:CE1	1:B:1024:LEU:HD12	2.52	0.43
1:B:1003:THR:O	1:B:1019:VAL:HG11	2.18	0.43
1:B:1298:PHE:HD2	1:B:1301:MET:HE2	1.83	0.43
1:B:1386:ALA:O	1:B:1389:VAL:HG12	2.18	0.43
1:B:1129:HIS:CD2	1:B:1130:PRO:HD2	2.54	0.43
1:A:320:GLU:HB3	4:A:3165:HOH:O	2.19	0.43
1:B:1149:LEU:HD22	1:B:1247:ASN:CB	2.49	0.43
1:B:1273:LYS:NZ	1:B:1273:LYS:HB3	2.33	0.43
1:B:1082:TYR:CE2	1:B:1086:CYS:SG	3.12	0.43
1:A:418:ARG:HH11	1:B:1069:ARG:HB3	1.84	0.42
1:B:1114:HIS:CE1	1:B:1116:GLN:HB2	2.54	0.42
1:B:1318:MET:CE	1:B:1318:MET:HA	2.49	0.42
1:A:17:LEU:HD21	1:A:34:LEU:HD21	2.01	0.42

Continued on next page...

Continued from previous page...

Atom-1	Atom-2	Interatomic distance (Å)	Clash overlap (Å)
1:A:286:GLU:O	1:A:291:ALA:HB3	2.20	0.42
1:B:1001:ALA:N	1:B:1004:LYS:HZ2	2.17	0.42
1:B:1059:ILE:HG22	1:B:1060:ASP:N	2.34	0.42
1:A:32:ARG:HD2	1:B:1042:PHE:CE1	2.54	0.42
1:A:106:THR:HG23	1:A:109:ARG:HH21	1.83	0.42
1:A:250:ALA:HB1	1:B:1257:ALA:HB1	2.02	0.42
1:A:273:LYS:O	1:A:276:GLU:HB3	2.20	0.42
1:B:1294:LYS:HE2	1:B:1357:LEU:HD13	2.01	0.42
1:B:1007:LEU:HD11	1:B:1029:ILE:HG21	2.01	0.42
1:B:1059:ILE:HA	1:B:1065:ILE:O	2.19	0.42
1:B:1138:THR:HG22	1:B:1253:ALA:HB2	2.01	0.42
1:B:1153:ASN:ND2	1:B:1155:ARG:H	2.17	0.42
1:B:1356:LYS:HD3	4:B:558:HOH:O	2.19	0.42
1:A:86:CYS:HA	1:A:389:VAL:HG21	2.02	0.42
1:B:1329:LEU:HD13	1:B:1371:ALA:O	2.19	0.42
1:B:1314:ARG:HB2	1:B:1361:VAL:HB	2.02	0.42
1:A:21:LYS:H	1:A:21:LYS:CE	2.31	0.42
1:A:305:HIS:HD2	1:A:307:VAL:N	2.06	0.42
1:B:1034:LEU:HD22	1:B:1039:VAL:HG13	2.02	0.42
1:B:1286:GLU:OE1	1:B:1291:ALA:HB2	2.20	0.42
1:A:7:LEU:CD1	1:A:17:LEU:HB2	2.50	0.41
1:A:20:LEU:HB2	1:A:28:VAL:CG2	2.50	0.41
1:A:87:TYR:CD1	1:A:95:PRO:HB3	2.54	0.41
1:B:1199:ASN:O	1:B:1203:SER:HB3	2.20	0.41
1:B:1274:MET:CB	4:B:324:HOH:O	2.68	0.41
1:A:339:ALA:HB1	1:A:367:ILE:HD13	2.03	0.41
1:B:1018:ASP:HB2	1:B:1030:ASP:HB3	2.01	0.41
1:B:1288:PHE:CD1	1:B:1288:PHE:C	2.93	0.41
1:B:1029:ILE:O	1:B:1031:ILE:HG23	2.21	0.41
1:B:1178:TYR:HB2	1:B:1184:PHE:CE1	2.55	0.41
1:A:212:ASN:HD22	1:A:214:ILE:H	1.66	0.41
1:B:1172:ALA:O	1:B:1175:CYS:HB2	2.20	0.41
1:B:1072:PRO:HB2	1:B:1075:GLN:HG3	2.03	0.41
1:A:303:PHE:HB3	1:A:357:LEU:HB3	2.03	0.41
1:B:1272:LEU:HD12	1:B:1272:LEU:N	2.35	0.41
1:A:250:ALA:CB	1:B:1257:ALA:HB1	2.51	0.41
1:B:1113:ILE:HD12	1:B:1113:ILE:O	2.21	0.41
1:B:1269:GLU:HB2	1:B:1273:LYS:HA	2.02	0.41
1:B:1426:ARG:NH1	4:B:53:HOH:O	2.53	0.41
1:A:83:LEU:O	1:A:86:CYS:HB2	2.21	0.41
1:A:98:GLU:HB2	4:A:3166:HOH:O	2.20	0.41

Continued on next page...

Continued from previous page...

Atom-1	Atom-2	Interatomic distance (Å)	Clash overlap (Å)
1:B:1001:ALA:HA	1:B:1004:LYS:CG	2.51	0.41
1:B:1231:GLN:HE22	1:B:1239:ARG:CD	2.34	0.41
1:A:412:TYR:CD1	1:B:1024:LEU:HB2	2.56	0.41
1:A:417:LYS:HD3	1:A:417:LYS:C	2.41	0.41
1:B:1274:MET:SD	1:B:1277:GLU:OE2	2.79	0.41
1:A:35:GLY:HA2	1:A:40:PHE:CD2	2.55	0.40
1:B:1231:GLN:HE22	1:B:1239:ARG:HD2	1.86	0.40
1:B:1263:ALA:HB2	4:B:321:HOH:O	2.20	0.40
1:B:1299:ARG:HA	1:B:1303:PHE:O	2.21	0.40
1:A:294:LYS:HB2	1:A:297:SER:HA	2.02	0.40
1:B:1131:MET:SD	1:B:1381:VAL:HG22	2.61	0.40
1:A:125:ARG:NH2	4:A:3083:HOH:O	2.54	0.40
1:A:260:TRP:CE2	1:A:264:HIS:HD2	2.40	0.40
1:A:274:MET:HB2	1:A:293:ASP:OD2	2.21	0.40
3:A:3000:NAI:H3B	3:A:3000:NAI:PA	2.60	0.40
1:A:238:VAL:HG13	1:A:251:CYS:HB3	2.03	0.40
1:A:348:ASN:HA	1:A:353:ILE:HD11	2.04	0.40
1:B:1131:MET:HE2	1:B:1380:THR:CG2	2.52	0.40
1:B:1349:ASP:HA	1:B:1350:PRO:HD3	1.98	0.40

There are no symmetry-related clashes.

5.3 Torsion angles [i](#)

5.3.1 Protein backbone [i](#)

In the following table, the Percentiles column shows the percent Ramachandran outliers of the chain as a percentile score with respect to all X-ray entries followed by that with respect to entries of similar resolution.

The Analysed column shows the number of residues for which the backbone conformation was analysed, and the total number of residues.

Mol	Chain	Analysed	Favoured	Allowed	Outliers	Percentiles	
1	A	424/427 (99%)	373 (88%)	43 (10%)	8 (2%)	8	13
1	B	424/427 (99%)	369 (87%)	48 (11%)	7 (2%)	9	16
All	All	848/854 (99%)	742 (88%)	91 (11%)	15 (2%)	8	14

All (15) Ramachandran outliers are listed below:

Mol	Chain	Res	Type
1	A	267	ALA
1	A	294	LYS
1	A	422	SER
1	B	1294	LYS
1	B	1330	GLY
1	A	290	ARG
1	A	401	ASP
1	B	1150	ASP
1	B	1286	GLU
1	B	1290	ARG
1	A	286	GLU
1	A	402	GLY
1	B	1012	ASP
1	B	1332	LYS
1	A	424	ILE

5.3.2 Protein sidechains [i](#)

In the following table, the Percentiles column shows the percent sidechain outliers of the chain as a percentile score with respect to all X-ray entries followed by that with respect to entries of similar resolution.

The Analysed column shows the number of residues for which the sidechain conformation was analysed, and the total number of residues.

Mol	Chain	Analysed	Rotameric	Outliers	Percentiles	
1	A	360/361 (100%)	345 (96%)	15 (4%)	30	54
1	B	360/361 (100%)	343 (95%)	17 (5%)	26	49
All	All	720/722 (100%)	688 (96%)	32 (4%)	28	52

All (32) residues with a non-rotameric sidechain are listed below:

Mol	Chain	Res	Type
1	A	21	LYS
1	A	63	GLU
1	A	83	LEU
1	A	119	ARG
1	A	134	MET
1	A	153	ASN
1	A	212	ASN
1	A	232	ASN
1	A	260	TRP

Continued on next page...

Continued from previous page...

Mol	Chain	Res	Type
1	A	278	ILE
1	A	284	ILE
1	A	288	PHE
1	A	294	LYS
1	A	299	ARG
1	A	404	LYS
1	B	1007	LEU
1	B	1026	GLN
1	B	1081	ASN
1	B	1098	GLU
1	B	1153	ASN
1	B	1156	HIS
1	B	1232	ASN
1	B	1260	TRP
1	B	1278	ILE
1	B	1284	ILE
1	B	1288	PHE
1	B	1294	LYS
1	B	1299	ARG
1	B	1335	LEU
1	B	1354	GLU
1	B	1404	LYS
1	B	1425	LYS

Sometimes sidechains can be flipped to improve hydrogen bonding and reduce clashes. All (25) such sidechains are listed below:

Mol	Chain	Res	Type
1	A	99	GLN
1	A	129	HIS
1	A	146	HIS
1	A	153	ASN
1	A	156	HIS
1	A	199	ASN
1	A	212	ASN
1	A	231	GLN
1	A	232	ASN
1	A	264	HIS
1	A	305	HIS
1	A	348	ASN
1	B	1026	GLN
1	B	1081	ASN
1	B	1097	GLN

Continued on next page...

Continued from previous page...

Mol	Chain	Res	Type
1	B	1110	HIS
1	B	1129	HIS
1	B	1153	ASN
1	B	1182	GLN
1	B	1231	GLN
1	B	1232	ASN
1	B	1264	HIS
1	B	1305	HIS
1	B	1323	HIS
1	B	1399	HIS

5.3.3 RNA [i](#)

There are no RNA molecules in this entry.

5.4 Non-standard residues in protein, DNA, RNA chains [i](#)

There are no non-standard protein/DNA/RNA residues in this entry.

5.5 Carbohydrates [i](#)

There are no monosaccharides in this entry.

5.6 Ligand geometry [i](#)

6 ligands are modelled in this entry.

In the following table, the Counts columns list the number of bonds (or angles) for which Mogul statistics could be retrieved, the number of bonds (or angles) that are observed in the model and the number of bonds (or angles) that are defined in the Chemical Component Dictionary. The Link column lists molecule types, if any, to which the group is linked. The Z score for a bond length (or angle) is the number of standard deviations the observed value is removed from the expected value. A bond length (or angle) with $|Z| > 2$ is considered an outlier worth inspection. RMSZ is the root-mean-square of all Z scores of the bond lengths (or angles).

Mol	Type	Chain	Res	Link	Bond lengths			Bond angles		
					Counts	RMSZ	$\# Z > 2$	Counts	RMSZ	$\# Z > 2$
2	SO4	A	2004	-	4,4,4	0.58	0	6,6,6	0.35	0
2	SO4	A	2006	-	4,4,4	0.63	0	6,6,6	0.47	0
3	NAI	A	3000	-	42,48,48	1.49	7 (16%)	47,73,73	1.99	8 (17%)

Mol	Type	Chain	Res	Link	Bond lengths			Bond angles		
					Counts	RMSZ	# Z > 2	Counts	RMSZ	# Z > 2
2	SO4	B	2001	-	4,4,4	0.50	0	6,6,6	3.56	4 (66%)
2	SO4	B	2003	-	4,4,4	0.63	0	6,6,6	3.86	4 (66%)
3	NAI	B	3001	-	42,48,48	1.52	9 (21%)	47,73,73	1.59	4 (8%)

In the following table, the Chirals column lists the number of chiral outliers, the number of chiral centers analysed, the number of these observed in the model and the number defined in the Chemical Component Dictionary. Similar counts are reported in the Torsion and Rings columns. '-' means no outliers of that kind were identified.

Mol	Type	Chain	Res	Link	Chirals	Torsions	Rings
3	NAI	A	3000	-	-	8/25/72/72	0/5/5/5
3	NAI	B	3001	-	-	9/25/72/72	0/5/5/5

All (16) bond length outliers are listed below:

Mol	Chain	Res	Type	Atoms	Z	Observed(Å)	Ideal(Å)
3	B	3001	NAI	C2N-C3N	-3.90	1.24	1.34
3	A	3000	NAI	C2N-C3N	-3.76	1.24	1.34
3	A	3000	NAI	PN-O2N	-3.67	1.37	1.50
3	A	3000	NAI	C7N-C3N	-3.66	1.40	1.48
3	B	3001	NAI	PN-O2N	-3.29	1.39	1.50
3	A	3000	NAI	C4N-C5N	-3.11	1.40	1.48
3	B	3001	NAI	C6N-C5N	2.77	1.38	1.33
3	B	3001	NAI	C6N-N1N	2.70	1.44	1.37
3	B	3001	NAI	C4A-N3A	-2.60	1.32	1.35
3	A	3000	NAI	C6N-N1N	2.58	1.43	1.37
3	A	3000	NAI	C2A-N1A	2.57	1.38	1.33
3	B	3001	NAI	C7N-C3N	-2.43	1.43	1.48
3	A	3000	NAI	C6N-C5N	2.39	1.37	1.33
3	B	3001	NAI	C4N-C5N	-2.39	1.42	1.48
3	B	3001	NAI	C2A-N1A	2.14	1.37	1.33
3	B	3001	NAI	C1D-N1N	-2.07	1.40	1.46

All (20) bond angle outliers are listed below:

Mol	Chain	Res	Type	Atoms	Z	Observed(°)	Ideal(°)
3	A	3000	NAI	C1D-N1N-C2N	-8.76	106.52	121.11
2	B	2003	SO4	O4-S-O1	-5.86	78.70	109.31
2	B	2001	SO4	O4-S-O1	-5.58	80.16	109.31
3	B	3001	NAI	C1D-N1N-C2N	-5.42	112.08	121.11
2	B	2003	SO4	O4-S-O3	-5.24	86.70	109.06

Continued on next page...

Continued from previous page...

Mol	Chain	Res	Type	Atoms	Z	Observed(°)	Ideal(°)
3	B	3001	NAI	O7N-C7N-C3N	-4.80	111.86	120.90
3	A	3000	NAI	C3N-C2N-N1N	-4.65	116.46	123.10
2	B	2001	SO4	O3-S-O1	-4.49	85.86	109.31
3	A	3000	NAI	O7N-C7N-C3N	-4.47	112.47	120.90
2	B	2003	SO4	O4-S-O2	-4.44	86.15	109.31
3	B	3001	NAI	C3N-C2N-N1N	-3.78	117.70	123.10
3	B	3001	NAI	C3N-C7N-N7N	3.66	124.16	117.67
2	B	2001	SO4	O4-S-O2	3.29	126.50	109.31
2	B	2001	SO4	O2-S-O1	-3.26	85.33	109.43
3	A	3000	NAI	O5B-C5B-C4B	3.16	119.88	108.99
3	A	3000	NAI	O4B-C4B-C5B	-2.83	100.07	109.37
3	A	3000	NAI	C3N-C7N-N7N	2.71	122.49	117.67
3	A	3000	NAI	C3B-C2B-C1B	2.47	104.70	100.98
2	B	2003	SO4	O2-S-O1	2.36	126.83	109.43
3	A	3000	NAI	C1D-N1N-C6N	2.29	125.77	120.83

There are no chirality outliers.

All (17) torsion outliers are listed below:

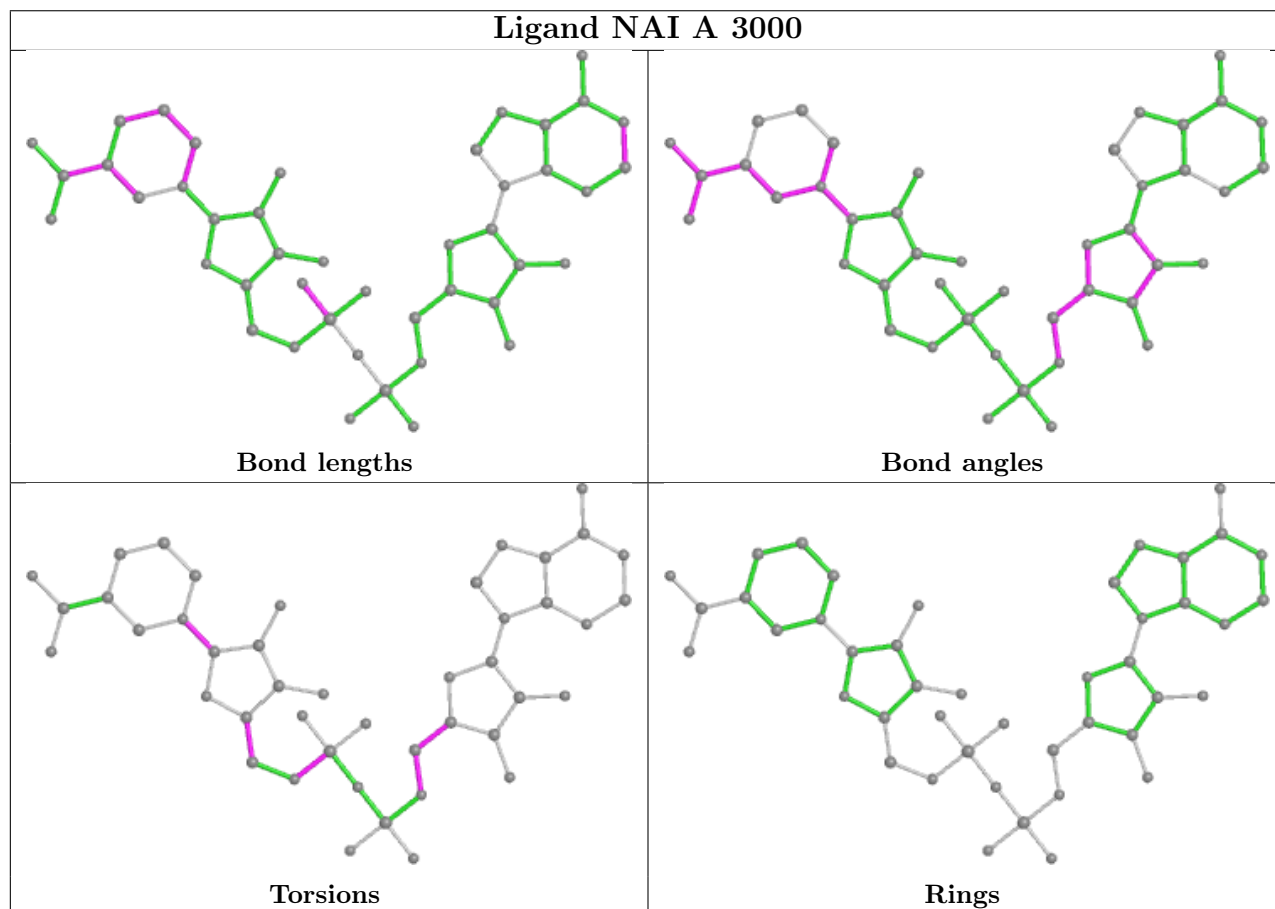
Mol	Chain	Res	Type	Atoms
3	A	3000	NAI	C4B-C5B-O5B-PA
3	A	3000	NAI	C5D-O5D-PN-O1N
3	A	3000	NAI	C5D-O5D-PN-O2N
3	B	3001	NAI	C5D-O5D-PN-O3
3	B	3001	NAI	C5D-O5D-PN-O1N
3	B	3001	NAI	C5D-O5D-PN-O2N
3	B	3001	NAI	O4D-C4D-C5D-O5D
3	A	3000	NAI	O4D-C4D-C5D-O5D
3	B	3001	NAI	C3D-C4D-C5D-O5D
3	B	3001	NAI	O4D-C1D-N1N-C2N
3	B	3001	NAI	PN-O3-PA-O2A
3	A	3000	NAI	C3D-C4D-C5D-O5D
3	A	3000	NAI	O4D-C1D-N1N-C2N
3	A	3000	NAI	O4B-C4B-C5B-O5B
3	B	3001	NAI	O4B-C4B-C5B-O5B
3	A	3000	NAI	C5D-O5D-PN-O3
3	B	3001	NAI	PN-O3-PA-O1A

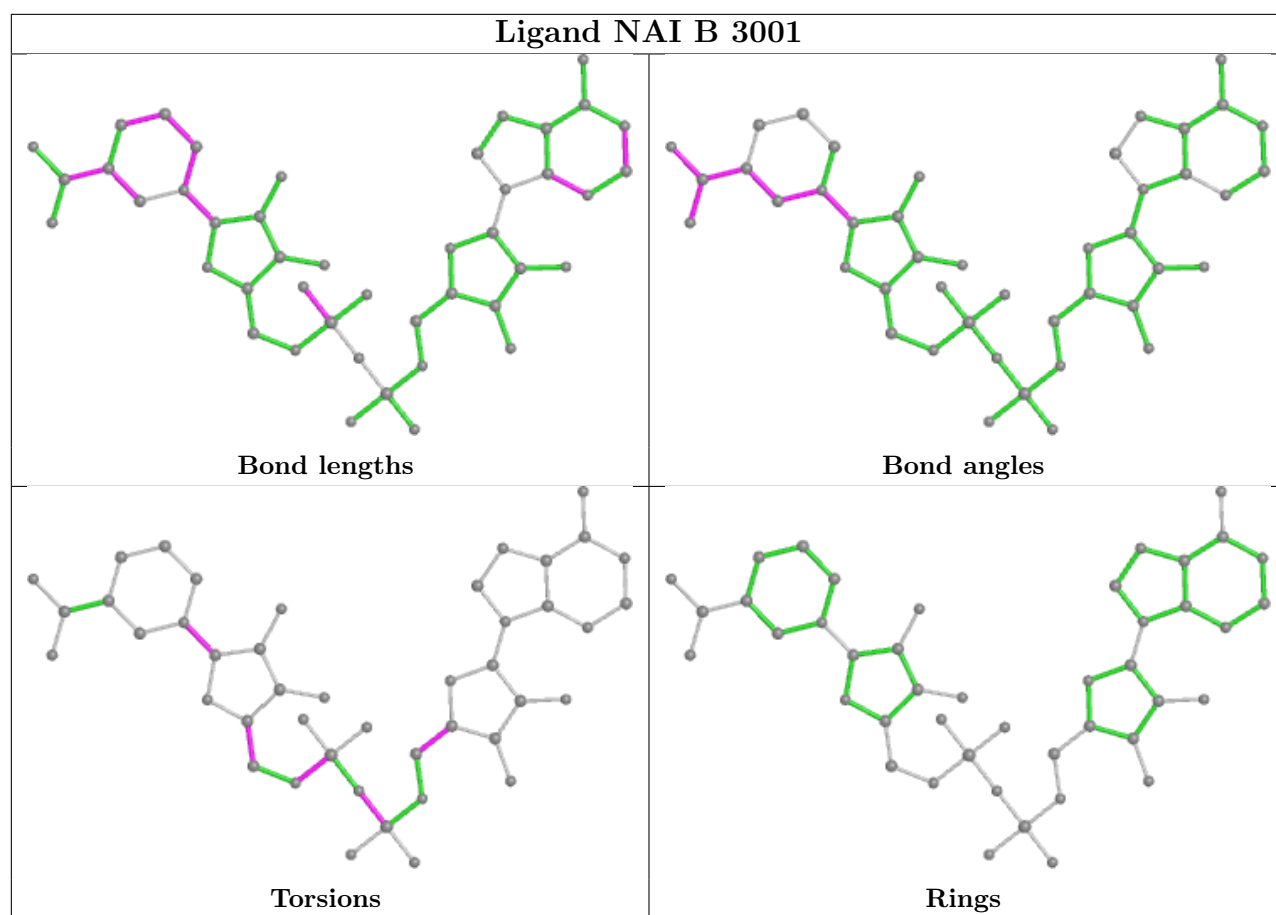
There are no ring outliers.

2 monomers are involved in 7 short contacts:

Mol	Chain	Res	Type	Clashes	Symm-Clashes
3	A	3000	NAI	6	0
3	B	3001	NAI	1	0

The following is a two-dimensional graphical depiction of Mogul quality analysis of bond lengths, bond angles, torsion angles, and ring geometry for all instances of the Ligand of Interest. In addition, ligands with molecular weight > 250 and outliers as shown on the validation Tables will also be included. For torsion angles, if less than 5% of the Mogul distribution of torsion angles is within 10 degrees of the torsion angle in question, then that torsion angle is considered an outlier. Any bond that is central to one or more torsion angles identified as an outlier by Mogul will be highlighted in the graph. For rings, the root-mean-square deviation (RMSD) between the ring in question and similar rings identified by Mogul is calculated over all ring torsion angles. If the average RMSD is greater than 60 degrees and the minimal RMSD between the ring in question and any Mogul-identified rings is also greater than 60 degrees, then that ring is considered an outlier. The outliers are highlighted in purple. The color gray indicates Mogul did not find sufficient equivalents in the CSD to analyse the geometry.





5.7 Other polymers [i](#)

There are no such residues in this entry.

5.8 Polymer linkage issues [i](#)

There are no chain breaks in this entry.

6 Fit of model and data

6.1 Protein, DNA and RNA chains

EDS was not executed - this section is therefore empty.

6.2 Non-standard residues in protein, DNA, RNA chains

EDS was not executed - this section is therefore empty.

6.3 Carbohydrates

EDS was not executed - this section is therefore empty.

6.4 Ligands

EDS was not executed - this section is therefore empty.

6.5 Other polymers

EDS was not executed - this section is therefore empty.