



Full wwPDB X-ray Structure Validation Report ⓘ

Jun 26, 2024 – 03:44 AM EDT

PDB ID : 7NX6
Title : Crystal structure of the receptor binding domain of SARS-CoV-2 Spike glycoprotein in complex with COVOX-222 and EY6A Fabs
Authors : Zhou, D.; Ren, J.; Stuart, D.
Deposited on : 2021-03-17
Resolution : 2.25 Å(reported)

This is a Full wwPDB X-ray Structure Validation Report for a publicly released PDB entry.

We welcome your comments at validation@mail.wwpdb.org

A user guide is available at

<https://www.wwpdb.org/validation/2017/XrayValidationReportHelp>

with specific help available everywhere you see the ⓘ symbol.

The types of validation reports are described at

<http://www.wwpdb.org/validation/2017/FAQs#types>.

The following versions of software and data (see [references ⓘ](#)) were used in the production of this report:

MolProbity : 4.02b-467
Mogul : 1.8.5 (274361), CSD as541be (2020)
Xtriage (Phenix) : 1.13
EDS : 2.37.1
Percentile statistics : 20191225.v01 (using entries in the PDB archive December 25th 2019)
Refmac : 5.8.0158
CCP4 : 7.0.044 (Gargrove)
Ideal geometry (proteins) : Engh & Huber (2001)
Ideal geometry (DNA, RNA) : Parkinson et al. (1996)
Validation Pipeline (wwPDB-VP) : 2.37.1

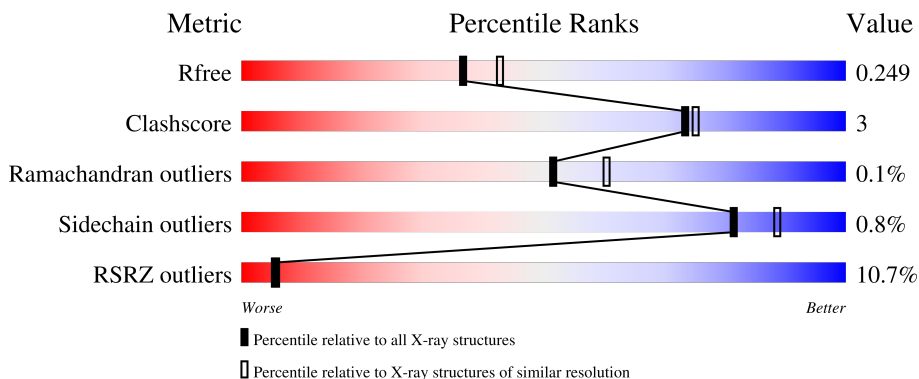
1 Overall quality at a glance

The following experimental techniques were used to determine the structure:

X-RAY DIFFRACTION

The reported resolution of this entry is 2.25 Å.

Percentile scores (ranging between 0-100) for global validation metrics of the entry are shown in the following graphic. The table shows the number of entries on which the scores are based.



Metric	Whole archive (#Entries)	Similar resolution (#Entries, resolution range(Å))
R_{free}	130704	1377 (2.26-2.26)
Clashscore	141614	1487 (2.26-2.26)
Ramachandran outliers	138981	1449 (2.26-2.26)
Sidechain outliers	138945	1450 (2.26-2.26)
RSRZ outliers	127900	1356 (2.26-2.26)

The table below summarises the geometric issues observed across the polymeric chains and their fit to the electron density. The red, orange, yellow and green segments of the lower bar indicate the fraction of residues that contain outliers for ≥ 3 , 2, 1 and 0 types of geometric quality criteria respectively. A grey segment represents the fraction of residues that are not modelled. The numeric value for each fraction is indicated below the corresponding segment, with a dot representing fractions $\leq 5\%$. The upper red bar (where present) indicates the fraction of residues that have poor fit to the electron density. The numeric value is given above the bar.

Mol	Chain	Length	Quality of chain
1	H	226	
2	L	215	
3	E	205	
4	A	224	
5	B	214	

The following table lists non-polymeric compounds, carbohydrate monomers and non-standard residues in protein, DNA, RNA chains that are outliers for geometric or electron-density-fit criteria:

Mol	Type	Chain	Res	Chirality	Geometry	Clashes	Electron density
6	CL	E	707	-	-	X	-

2 Entry composition

There are 10 unique types of molecules in this entry. The entry contains 8394 atoms, of which 0 are hydrogens and 0 are deuteriums.

In the tables below, the ZeroOcc column contains the number of atoms modelled with zero occupancy, the AltConf column contains the number of residues with at least one atom in alternate conformation and the Trace column contains the number of residues modelled with at most 2 atoms.

- Molecule 1 is a protein called EY6A Fab heavy chain.

Mol	Chain	Residues	Atoms					ZeroOcc	AltConf	Trace
			Total	C	N	O	S			
1	H	215	1637	1041	273	317	6	0	0	0

- Molecule 2 is a protein called EY6A Fab light chain.

Mol	Chain	Residues	Atoms					ZeroOcc	AltConf	Trace
			Total	C	N	O	S			
2	L	214	1631	1019	272	335	5	0	0	0

- Molecule 3 is a protein called Spike protein S1.

Mol	Chain	Residues	Atoms					ZeroOcc	AltConf	Trace
			Total	C	N	O	S			
3	E	193	1529	980	255	286	8	0	0	0

There are 10 discrepancies between the modelled and reference sequences:

Chain	Residue	Modelled	Actual	Comment	Reference
E	324	GLU	-	expression tag	UNP P0DTC2
E	325	THR	-	expression tag	UNP P0DTC2
E	326	GLY	-	expression tag	UNP P0DTC2
E	327	HIS	-	expression tag	UNP P0DTC2
E	328	HIS	-	expression tag	UNP P0DTC2
E	329	HIS	-	expression tag	UNP P0DTC2
E	330	HIS	-	expression tag	UNP P0DTC2
E	331	HIS	-	expression tag	UNP P0DTC2
E	332	HIS	-	expression tag	UNP P0DTC2
E	527	LYS	PRO	conflict	UNP P0DTC2

- Molecule 4 is a protein called COVOX-222 Fab Heavy chain.

Mol	Chain	Residues	Atoms					ZeroOcc	AltConf	Trace
			Total	C	N	O	S			
4	A	214	1577	995	263	313	6	0	0	0

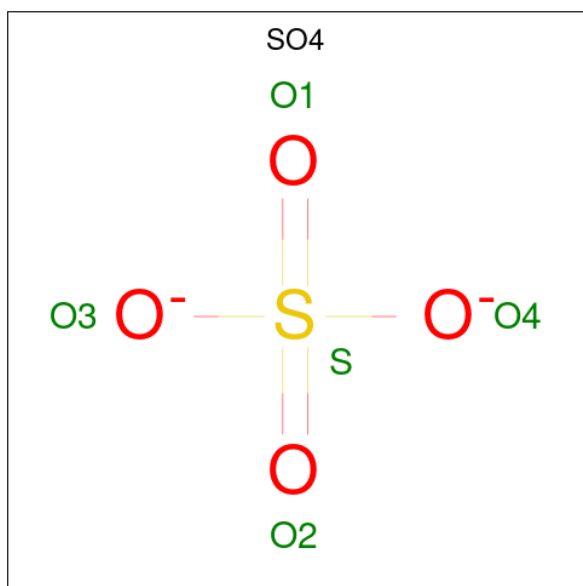
- Molecule 5 is a protein called COVOX-222 Fab light chain.

Mol	Chain	Residues	Atoms					ZeroOcc	AltConf	Trace
			Total	C	N	O	S			
5	B	213	1640	1025	279	330	6	0	2	0

- Molecule 6 is CHLORIDE ION (three-letter code: CL) (formula: Cl).

Mol	Chain	Residues	Atoms		ZeroOcc	AltConf
6	H	2	Total	Cl	0	0
			2	2		
6	E	2	Total	Cl	0	0
			2	2		
6	A	2	Total	Cl	0	0
			2	2		
6	B	1	Total	Cl	0	0
			1	1		

- Molecule 7 is SULFATE ION (three-letter code: SO4) (formula: O₄S).



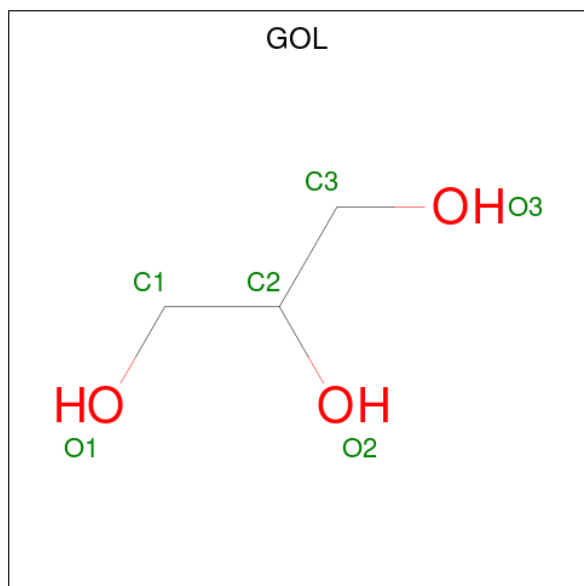
Mol	Chain	Residues	Atoms			ZeroOcc	AltConf
			Total	O	S		
7	L	1	5	4	1	0	0

Continued on next page...

Continued from previous page...

Mol	Chain	Residues	Atoms			ZeroOcc	AltConf
7	E	1	Total	O	S	0	0
			5	4	1		
7	E	1	Total	O	S	0	0
			5	4	1		
7	E	1	Total	O	S	0	0
			5	4	1		
7	E	1	Total	O	S	0	0
			5	4	1		
7	B	1	Total	O	S	0	0
			5	4	1		
7	B	1	Total	O	S	0	0
			5	4	1		
7	B	1	Total	O	S	0	0
			5	4	1		
7	B	1	Total	O	S	0	0
			5	4	1		

- Molecule 8 is GLYCEROL (three-letter code: GOL) (formula: C₃H₈O₃).



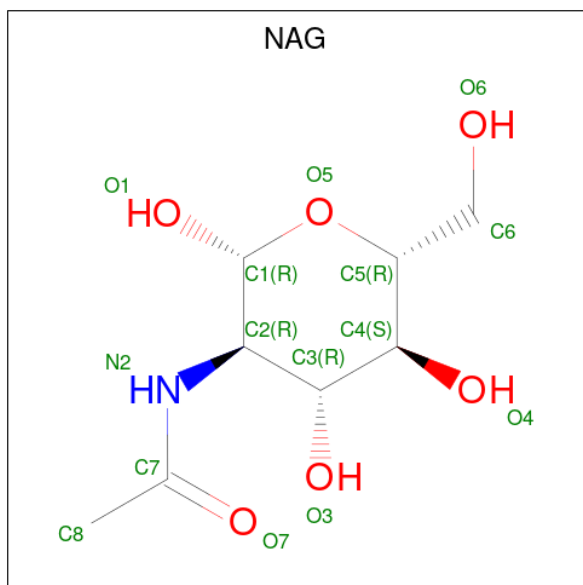
Mol	Chain	Residues	Atoms			ZeroOcc	AltConf
8	E	1	Total	C	O	0	0
			6	3	3		
8	B	1	Total	C	O	0	0
			6	3	3		

Continued on next page...

Continued from previous page...

Mol	Chain	Residues	Atoms			ZeroOcc	AltConf
			Total	C	O		
8	B	1	6	3	3	0	0

- Molecule 9 is 2-acetamido-2-deoxy-beta-D-glucopyranose (three-letter code: NAG) (formula: $C_8H_{15}NO_6$).



Mol	Chain	Residues	Atoms				ZeroOcc	AltConf
			Total	C	N	O		
9	E	1	14	8	1	5	0	0

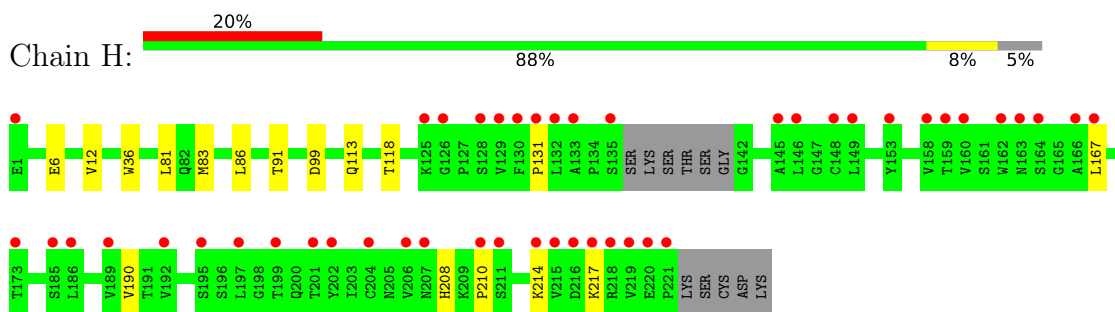
- Molecule 10 is water.

Mol	Chain	Residues	Atoms		ZeroOcc	AltConf
10	H	22	Total	O	0	0
			22	22		
10	L	39	Total	O	0	0
			39	39		
10	E	79	Total	O	0	0
			79	79		
10	A	79	Total	O	0	0
			79	79		
10	B	72	Total	O	0	0
			72	72		

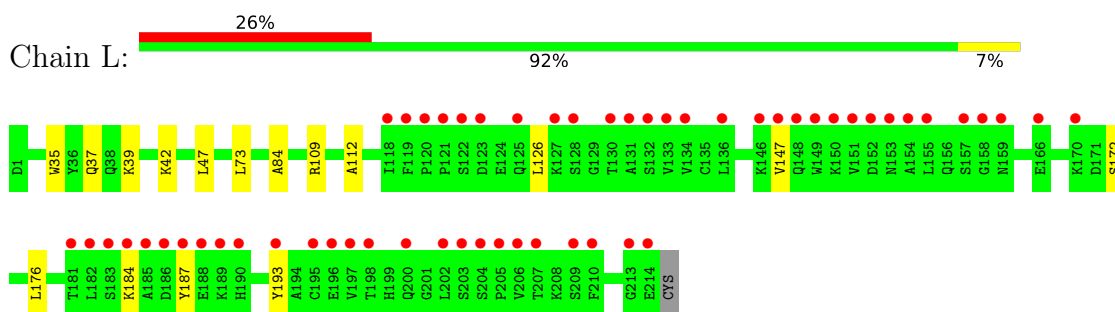
3 Residue-property plots [i](#)

These plots are drawn for all protein, RNA, DNA and oligosaccharide chains in the entry. The first graphic for a chain summarises the proportions of the various outlier classes displayed in the second graphic. The second graphic shows the sequence view annotated by issues in geometry and electron density. Residues are color-coded according to the number of geometric quality criteria for which they contain at least one outlier: green = 0, yellow = 1, orange = 2 and red = 3 or more. A red dot above a residue indicates a poor fit to the electron density ($RSRZ > 2$). Stretches of 2 or more consecutive residues without any outlier are shown as a green connector. Residues present in the sample, but not in the model, are shown in grey.

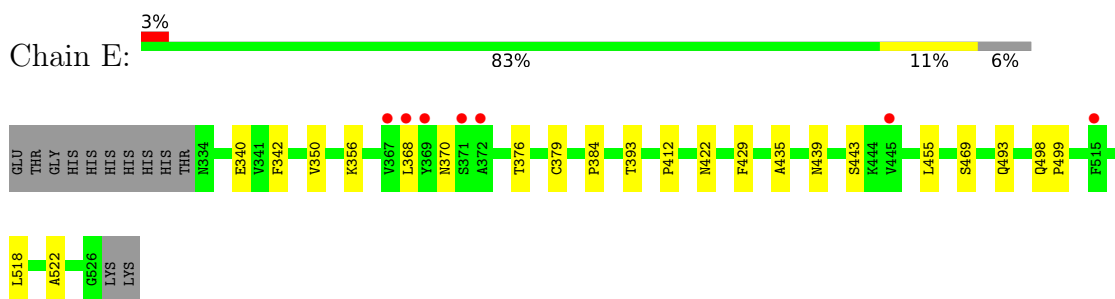
- Molecule 1: EY6A Fab heavy chain



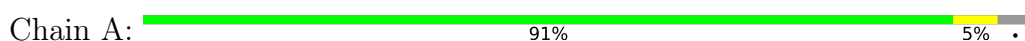
- Molecule 2: EY6A Fab light chain

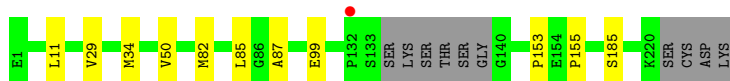


- Molecule 3: Spike protein S1

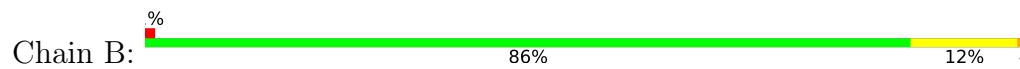


- Molecule 4: COVOX-222 Fab Heavy chain





- Molecule 5: COVOX-222 Fab light chain



4 Data and refinement statistics

Property	Value	Source
Space group	P 21 21 21	Depositor
Cell constants a, b, c, α , β , γ	54.39Å 120.15Å 211.71Å 90.00° 90.00° 90.00°	Depositor
Resolution (Å)	105.85 – 2.25 105.85 – 2.25	Depositor EDS
% Data completeness (in resolution range)	97.1 (105.85-2.25) 93.1 (105.85-2.25)	Depositor EDS
R_{merge}	0.44	Depositor
R_{sym}	(Not available)	Depositor
$\langle I/\sigma(I) \rangle$ ¹	0.92 (at 2.25Å)	Xtrriage
Refinement program	PHENIX 1.19_4092	Depositor
R, R_{free}	0.207 , 0.248 0.209 , 0.249	Depositor DCC
R_{free} test set	3147 reflections (5.05%)	wwPDB-VP
Wilson B-factor (Å ²)	46.2	Xtrriage
Anisotropy	0.147	Xtrriage
Bulk solvent k_{sol} (e/Å ³), B_{sol} (Å ²)	0.34 , 42.1	EDS
L-test for twinning ²	$\langle L \rangle = 0.44$, $\langle L^2 \rangle = 0.26$	Xtrriage
Estimated twinning fraction	No twinning to report.	Xtrriage
F_o, F_c correlation	0.93	EDS
Total number of atoms	8394	wwPDB-VP
Average B, all atoms (Å ²)	66.0	wwPDB-VP

Xtrriage's analysis on translational NCS is as follows: *The largest off-origin peak in the Patterson function is 3.91% of the height of the origin peak. No significant pseudotranslation is detected.*

¹Intensities estimated from amplitudes.

²Theoretical values of $\langle |L| \rangle$, $\langle L^2 \rangle$ for acentric reflections are 0.5, 0.333 respectively for untwinned datasets, and 0.375, 0.2 for perfectly twinned datasets.

5 Model quality [i](#)

5.1 Standard geometry [i](#)

Bond lengths and bond angles in the following residue types are not validated in this section: SO4, NAG, GOL, CL

The Z score for a bond length (or angle) is the number of standard deviations the observed value is removed from the expected value. A bond length (or angle) with $|Z| > 5$ is considered an outlier worth inspection. RMSZ is the root-mean-square of all Z scores of the bond lengths (or angles).

Mol	Chain	Bond lengths		Bond angles	
		RMSZ	# Z >5	RMSZ	# Z >5
1	H	0.25	0/1679	0.49	0/2288
2	L	0.25	0/1664	0.48	0/2258
3	E	0.26	0/1572	0.48	0/2139
4	A	0.26	0/1615	0.51	0/2203
5	B	0.25	0/1683	0.51	0/2287
All	All	0.25	0/8213	0.49	0/11175

There are no bond length outliers.

There are no bond angle outliers.

There are no chirality outliers.

There are no planarity outliers.

5.2 Too-close contacts [i](#)

In the following table, the Non-H and H(model) columns list the number of non-hydrogen atoms and hydrogen atoms in the chain respectively. The H(added) column lists the number of hydrogen atoms added and optimized by MolProbity. The Clashes column lists the number of clashes within the asymmetric unit, whereas Symm-Clashes lists symmetry-related clashes.

Mol	Chain	Non-H	H(model)	H(added)	Clashes	Symm-Clashes
1	H	1637	0	1591	9	0
2	L	1631	0	1591	10	0
3	E	1529	0	1445	12	0
4	A	1577	0	1534	6	0
5	B	1640	0	1594	15	0
6	A	2	0	0	2	0
6	B	1	0	0	0	0
6	E	2	0	0	2	0

Continued on next page...

Continued from previous page...

Mol	Chain	Non-H	H(model)	H(added)	Clashes	Symm-Clashes
6	H	2	0	0	0	0
7	B	25	0	0	1	0
7	E	20	0	0	0	0
7	L	5	0	0	0	0
8	B	12	0	16	0	0
8	E	6	0	8	0	0
9	E	14	0	13	0	0
10	A	79	0	0	0	0
10	B	72	0	0	0	0
10	E	79	0	0	0	0
10	H	22	0	0	1	0
10	L	39	0	0	0	0
All	All	8394	0	7792	52	0

The all-atom clashscore is defined as the number of clashes found per 1000 atoms (including hydrogen atoms). The all-atom clashscore for this structure is 3.

All (52) close contacts within the same asymmetric unit are listed below, sorted by their clash magnitude.

Atom-1	Atom-2	Interatomic distance (Å)	Clash overlap (Å)
4:A:82:MET:HB3	4:A:85:LEU:HD21	1.68	0.74
3:E:498:GLN:HB3	6:E:707:CL:CL	2.34	0.64
3:E:376:THR:HB	3:E:435:ALA:HB3	1.81	0.63
5:B:106:ILE:O	5:B:166:GLN:NE2	2.33	0.62
3:E:340:GLU:OE1	3:E:356:LYS:NZ	2.33	0.62
3:E:412:PRO:HG3	3:E:429:PHE:HB3	1.81	0.61
1:H:83:MET:HB3	1:H:86:LEU:HD21	1.84	0.58
2:L:39:LYS:HD3	2:L:84:ALA:HB2	1.87	0.56
5:B:62:ARG:NH1	7:B:305:SO4:O3	2.38	0.55
3:E:455:LEU:HD22	3:E:493:GLN:HG3	1.90	0.54
2:L:109:ARG:HH12	2:L:112:ALA:HB2	1.73	0.53
2:L:187:TYR:O	2:L:193:TYR:OH	2.26	0.52
4:A:87:ALA:N	6:A:302:CL:CL	2.80	0.50
2:L:37:GLN:HB2	2:L:47:LEU:HD11	1.92	0.50
5:B:81:PRO:HA	5:B:106:ILE:HD13	1.93	0.50
1:H:6:GLU:H	1:H:113:GLN:HE22	1.58	0.50
2:L:39:LYS:HB2	2:L:42:LYS:HD3	1.93	0.49
2:L:147:VAL:HG21	2:L:176:LEU:HD22	1.93	0.49
1:H:91:THR:HG23	1:H:118:THR:HA	1.95	0.49
2:L:109:ARG:HD2	2:L:172:SER:HB2	1.94	0.49
3:E:379:CYS:SG	3:E:384:PRO:HG3	2.53	0.49

Continued on next page...

Continued from previous page...

Atom-1	Atom-2	Interatomic distance (Å)	Clash overlap (Å)
3:E:439:ASN:O	3:E:443:SER:OG	2.29	0.48
5:B:185:ASP:HA	5:B:188:LYS:HE2	1.95	0.48
1:H:131:PRO:HD3	1:H:217:LYS:HD3	1.96	0.48
5:B:166:GLN:HG3	5:B:173:TYR:CZ	2.49	0.47
3:E:350:VAL:HG22	3:E:422:ASN:HB3	1.97	0.46
3:E:393:THR:HA	3:E:522:ALA:HA	1.98	0.46
5:B:19:ALA:HB3	5:B:76:ILE:HB	1.98	0.46
5:B:11:LEU:O	5:B:105:ASP:N	2.50	0.45
1:H:208:HIS:CD2	1:H:210:PRO:HD2	2.52	0.45
5:B:55:ARG:HG2	5:B:59:ILE:HB	1.99	0.45
3:E:499:PRO:HD2	6:E:707:CL:CL	2.53	0.45
5:B:183:LYS:O	5:B:187:GLU:HG2	2.17	0.44
4:A:11:LEU:HB2	4:A:153:PRO:HG3	1.99	0.44
1:H:36:TRP:CE2	1:H:81:LEU:HB2	2.52	0.43
2:L:35:TRP:CD2	2:L:73:LEU:HB2	2.53	0.43
1:H:12:VAL:HG11	1:H:86:LEU:HD13	1.99	0.43
4:A:155:PRO:HA	6:A:301:CL:CL	2.56	0.43
5:B:90:GLN:HG2	5:B:97:ARG:O	2.18	0.43
5:B:145:LYS:HB3	5:B:197:THR:OG1	2.18	0.42
5:B:197:THR:HG22	5:B:204:PRO:HG3	2.01	0.42
3:E:342:PHE:CD1	3:E:368:LEU:HD11	2.55	0.42
3:E:393:THR:HG21	3:E:518:LEU:HB2	2.01	0.42
4:A:29:VAL:HG13	4:A:34:MET:HG3	2.01	0.42
5:B:34:LEU:HG	5:B:72:PHE:CG	2.55	0.42
1:H:214:LYS:NZ	10:H:401:HOH:O	2.32	0.42
5:B:93:ASP:OD1	5:B:94:THR:N	2.52	0.41
2:L:126:LEU:HB3	2:L:184:LYS:NZ	2.35	0.41
4:A:50:VAL:HG21	4:A:99:GLU:HG3	2.03	0.41
1:H:167:LEU:HD21	1:H:190:VAL:HG21	2.02	0.41
5:B:113:PRO:HB3	5:B:139:PHE:HB3	2.03	0.41
2:L:35:TRP:CE2	2:L:73:LEU:HB2	2.56	0.40

There are no symmetry-related clashes.

5.3 Torsion angles

5.3.1 Protein backbone

In the following table, the Percentiles column shows the percent Ramachandran outliers of the chain as a percentile score with respect to all X-ray entries followed by that with respect to entries of similar resolution.

The Analysed column shows the number of residues for which the backbone conformation was analysed, and the total number of residues.

Mol	Chain	Analysed	Favoured	Allowed	Outliers	Percentiles	
1	H	211/226 (93%)	199 (94%)	11 (5%)	1 (0%)	29	29
2	L	212/215 (99%)	203 (96%)	9 (4%)	0	100	100
3	E	191/205 (93%)	185 (97%)	6 (3%)	0	100	100
4	A	210/224 (94%)	204 (97%)	6 (3%)	0	100	100
5	B	213/214 (100%)	206 (97%)	7 (3%)	0	100	100
All	All	1037/1084 (96%)	997 (96%)	39 (4%)	1 (0%)	51	60

All (1) Ramachandran outliers are listed below:

Mol	Chain	Res	Type
1	H	99	ASP

5.3.2 Protein sidechains [i](#)

In the following table, the Percentiles column shows the percent sidechain outliers of the chain as a percentile score with respect to all X-ray entries followed by that with respect to entries of similar resolution.

The Analysed column shows the number of residues for which the sidechain conformation was analysed, and the total number of residues.

Mol	Chain	Analysed	Rotameric	Outliers	Percentiles	
1	H	181/191 (95%)	181 (100%)	0	100	100
2	L	187/188 (100%)	187 (100%)	0	100	100
3	E	166/177 (94%)	164 (99%)	2 (1%)	71	80
4	A	176/186 (95%)	175 (99%)	1 (1%)	86	91
5	B	186/185 (100%)	182 (98%)	4 (2%)	52	61
All	All	896/927 (97%)	889 (99%)	7 (1%)	81	88

All (7) residues with a non-rotameric sidechain are listed below:

Mol	Chain	Res	Type
3	E	370	ASN
3	E	469	SER
4	A	185	SER
5	B	34	LEU

Continued on next page...

Continued from previous page...

Mol	Chain	Res	Type
5	B	78	ARG
5	B	93	ASP
5	B	176	SER

Sometimes sidechains can be flipped to improve hydrogen bonding and reduce clashes. All (1) such sidechains are listed below:

Mol	Chain	Res	Type
1	H	200	GLN

5.3.3 RNA [i](#)

There are no RNA molecules in this entry.

5.4 Non-standard residues in protein, DNA, RNA chains [i](#)

There are no non-standard protein/DNA/RNA residues in this entry.

5.5 Carbohydrates [i](#)

There are no monosaccharides in this entry.

5.6 Ligand geometry [i](#)

Of 21 ligands modelled in this entry, 7 are monoatomic - leaving 14 for Mogul analysis.

In the following table, the Counts columns list the number of bonds (or angles) for which Mogul statistics could be retrieved, the number of bonds (or angles) that are observed in the model and the number of bonds (or angles) that are defined in the Chemical Component Dictionary. The Link column lists molecule types, if any, to which the group is linked. The Z score for a bond length (or angle) is the number of standard deviations the observed value is removed from the expected value. A bond length (or angle) with $|Z| > 2$ is considered an outlier worth inspection. RMSZ is the root-mean-square of all Z scores of the bond lengths (or angles).

Mol	Type	Chain	Res	Link	Bond lengths			Bond angles		
					Counts	RMSZ	$\# Z > 2$	Counts	RMSZ	$\# Z > 2$
7	SO4	B	304	-	4,4,4	0.14	0	6,6,6	0.05	0
7	SO4	E	703	-	4,4,4	0.14	0	6,6,6	0.08	0
7	SO4	B	305	-	4,4,4	0.14	0	6,6,6	0.04	0
7	SO4	B	307	-	4,4,4	0.14	0	6,6,6	0.05	0
7	SO4	B	303	-	4,4,4	0.14	0	6,6,6	0.05	0

Mol	Type	Chain	Res	Link	Bond lengths			Bond angles		
					Counts	RMSZ	# Z > 2	Counts	RMSZ	# Z > 2
8	GOL	B	301	-	5,5,5	0.92	0	5,5,5	0.99	0
7	SO4	B	306	-	4,4,4	0.14	0	6,6,6	0.06	0
7	SO4	E	706	-	4,4,4	0.14	0	6,6,6	0.07	0
8	GOL	B	302	-	5,5,5	0.90	0	5,5,5	1.01	0
7	SO4	L	301	-	4,4,4	0.14	0	6,6,6	0.04	0
9	NAG	E	702	3	14,14,15	0.31	0	17,19,21	0.51	0
7	SO4	E	704	-	4,4,4	0.14	0	6,6,6	0.05	0
7	SO4	E	705	-	4,4,4	0.14	0	6,6,6	0.04	0
8	GOL	E	701	-	5,5,5	0.87	0	5,5,5	1.03	0

In the following table, the Chirals column lists the number of chiral outliers, the number of chiral centers analysed, the number of these observed in the model and the number defined in the Chemical Component Dictionary. Similar counts are reported in the Torsion and Rings columns. '-' means no outliers of that kind were identified.

Mol	Type	Chain	Res	Link	Chirals	Torsions	Rings
8	GOL	B	301	-	-	2/4/4/4	-
8	GOL	B	302	-	-	0/4/4/4	-
9	NAG	E	702	3	-	0/6/23/26	0/1/1/1
8	GOL	E	701	-	-	0/4/4/4	-

There are no bond length outliers.

There are no bond angle outliers.

There are no chirality outliers.

All (2) torsion outliers are listed below:

Mol	Chain	Res	Type	Atoms
8	B	301	GOL	C1-C2-C3-O3
8	B	301	GOL	O2-C2-C3-O3

There are no ring outliers.

1 monomer is involved in 1 short contact:

Mol	Chain	Res	Type	Clashes	Symm-Clashes
7	B	305	SO4	1	0

5.7 Other polymers

There are no such residues in this entry.

5.8 Polymer linkage issues

There are no chain breaks in this entry.

6 Fit of model and data

6.1 Protein, DNA and RNA chains

In the following table, the column labelled ‘#RSRZ > 2’ contains the number (and percentage) of RSRZ outliers, followed by percent RSRZ outliers for the chain as percentile scores relative to all X-ray entries and entries of similar resolution. The OWAB column contains the minimum, median, 95th percentile and maximum values of the occupancy-weighted average B-factor per residue. The column labelled ‘Q < 0.9’ lists the number of (and percentage) of residues with an average occupancy less than 0.9.

Mol	Chain	Analysed	<RSRZ>	#RSRZ>2	OWAB(Å ²)	Q<0.9
1	H	215/226 (95%)	1.15	46 (21%) 0 0	42, 81, 151, 178	0
2	L	214/215 (99%)	1.22	56 (26%) 0 0	36, 73, 168, 186	0
3	E	193/205 (94%)	0.32	7 (3%) 42 44	31, 46, 82, 124	0
4	A	214/224 (95%)	0.23	1 (0%) 91 91	34, 46, 82, 114	0
5	B	213/214 (99%)	0.10	2 (0%) 84 85	37, 51, 72, 104	0
All	All	1049/1084 (96%)	0.61	112 (10%) 6 5	31, 54, 148, 186	0

All (112) RSRZ outliers are listed below:

Mol	Chain	Res	Type	RSRZ
2	L	147	VAL	9.5
1	H	130	PHE	9.1
1	H	219	VAL	9.0
3	E	369	TYR	8.0
1	H	207	ASN	7.8
2	L	209	SER	7.1
2	L	148	GLN	7.0
1	H	192	VAL	6.9
2	L	122	SER	6.7
1	H	131	PRO	6.4
1	H	129	VAL	6.3
1	H	164	SER	6.1
2	L	128	SER	6.1
2	L	149	TRP	5.9
2	L	134	VAL	5.8
2	L	181	THR	5.8
1	H	216	ASP	5.6
2	L	155	LEU	5.3
2	L	182	LEU	5.2
1	H	202	TYR	5.2

Continued on next page...

Continued from previous page...

Mol	Chain	Res	Type	RSRZ
1	H	128	SER	5.1
1	H	215	VAL	5.0
2	L	196	GLU	5.0
1	H	204	CYS	4.9
2	L	131	ALA	4.7
2	L	157	SER	4.7
2	L	193	TYR	4.7
2	L	151	VAL	4.7
2	L	183	SER	4.6
2	L	184	LYS	4.5
2	L	127	LYS	4.4
1	H	218	ARG	4.3
1	H	160	VAL	4.3
1	H	145	ALA	4.1
1	H	217	LYS	4.1
1	H	132	LEU	3.9
2	L	197	VAL	3.7
1	H	206	VAL	3.7
1	H	166	ALA	3.7
2	L	118	ILE	3.7
1	H	159	THR	3.6
2	L	120	PRO	3.5
1	H	199	THR	3.5
1	H	201	THR	3.3
1	H	146	LEU	3.3
1	H	125	LYS	3.3
2	L	158	GLY	3.3
3	E	367	VAL	3.3
2	L	130	THR	3.3
1	H	133	ALA	3.2
2	L	203	SER	3.2
1	H	186	LEU	3.2
2	L	123	ASP	3.2
1	H	210	PRO	3.2
2	L	210	PHE	3.1
2	L	125	GLN	3.1
2	L	150	LYS	3.1
1	H	214	LYS	3.1
2	L	206	VAL	3.1
2	L	190	HIS	3.1
2	L	121	PRO	3.1
1	H	149	LEU	3.0

Continued on next page...

Continued from previous page...

Mol	Chain	Res	Type	RSRZ
2	L	189	LYS	3.0
1	H	167	LEU	2.9
2	L	146	LYS	2.9
1	H	221	PRO	2.9
1	H	185	SER	2.9
1	H	1	GLU	2.9
2	L	136	LEU	2.9
2	L	133	VAL	2.8
3	E	445	VAL	2.8
1	H	195	SER	2.7
2	L	153	ASN	2.7
2	L	195	CYS	2.7
2	L	205	PRO	2.7
2	L	119	PHE	2.7
2	L	159	ASN	2.7
1	H	173	THR	2.7
1	H	135	SER	2.6
2	L	154	ALA	2.6
2	L	185	ALA	2.6
3	E	368	LEU	2.6
2	L	170	LYS	2.6
2	L	202	LEU	2.6
1	H	220	GLU	2.5
1	H	158	VAL	2.5
1	H	163	ASN	2.5
1	H	162	TRP	2.4
2	L	187	TYR	2.4
1	H	153	TYR	2.4
2	L	198	THR	2.4
2	L	132	SER	2.4
3	E	372	ALA	2.3
3	E	515	PHE	2.3
1	H	197	LEU	2.2
5	B	11	LEU	2.2
2	L	186	ASP	2.2
2	L	214	GLU	2.2
3	E	371	SER	2.2
1	H	211	SER	2.2
2	L	152	ASP	2.2
1	H	148	CYS	2.2
5	B	13	LEU	2.1
1	H	189	VAL	2.1

Continued on next page...

Continued from previous page...

Mol	Chain	Res	Type	RSRZ
2	L	188	GLU	2.1
2	L	204	SER	2.1
4	A	132	PRO	2.1
2	L	213	GLY	2.1
2	L	200	GLN	2.0
1	H	126	GLY	2.0
2	L	207	THR	2.0
2	L	166	GLU	2.0

6.2 Non-standard residues in protein, DNA, RNA chains [i](#)

There are no non-standard protein/DNA/RNA residues in this entry.

6.3 Carbohydrates [i](#)

There are no monosaccharides in this entry.

6.4 Ligands [i](#)

In the following table, the Atoms column lists the number of modelled atoms in the group and the number defined in the chemical component dictionary. The B-factors column lists the minimum, median, 95th percentile and maximum values of B factors of atoms in the group. The column labelled 'Q< 0.9' lists the number of atoms with occupancy less than 0.9.

Mol	Type	Chain	Res	Atoms	RSCC	RSR	B-factors(Å ²)	Q<0.9
9	NAG	E	702	14/15	0.69	0.38	89,99,105,118	0
6	CL	E	707	1/1	0.74	0.12	78,78,78,78	0
7	SO4	L	301	5/5	0.84	0.31	97,105,121,125	0
7	SO4	B	307	5/5	0.85	0.28	100,107,124,154	0
8	GOL	B	301	6/6	0.87	0.23	54,64,74,75	0
8	GOL	B	302	6/6	0.87	0.11	71,74,81,81	0
8	GOL	E	701	6/6	0.87	0.14	48,61,64,75	0
7	SO4	B	303	5/5	0.88	0.10	89,93,105,106	0
6	CL	B	308	1/1	0.89	0.12	83,83,83,83	0
7	SO4	E	705	5/5	0.89	0.17	104,112,121,148	0
7	SO4	B	306	5/5	0.90	0.19	78,83,101,108	0
7	SO4	E	704	5/5	0.90	0.30	73,81,102,102	0
6	CL	H	301	1/1	0.91	0.06	63,63,63,63	0
7	SO4	B	305	5/5	0.91	0.10	97,101,118,119	0
6	CL	A	302	1/1	0.93	0.08	77,77,77,77	0

Continued on next page...

Continued from previous page...

Mol	Type	Chain	Res	Atoms	RSCC	RSR	B-factors(\AA^2)	Q<0.9
7	SO4	B	304	5/5	0.94	0.22	82,91,108,120	0
7	SO4	E	703	5/5	0.96	0.09	58,63,66,72	0
6	CL	H	302	1/1	0.97	0.11	55,55,55,55	0
6	CL	E	708	1/1	0.97	0.10	57,57,57,57	0
7	SO4	E	706	5/5	0.97	0.15	43,50,59,68	0
6	CL	A	301	1/1	0.98	0.08	51,51,51,51	0

6.5 Other polymers [i](#)

There are no such residues in this entry.