



Full wwPDB X-ray Structure Validation Report ⓘ

Feb 21, 2024 – 01:33 AM EST

PDB ID : 4O13
Title : The crystal structure of NAMPT in complex with GNE-618
Authors : Oh, A.; Coons, M.; Brillantes, B.; Wang, W.
Deposited on : 2013-12-15
Resolution : 1.75 Å(reported)

This is a Full wwPDB X-ray Structure Validation Report for a publicly released PDB entry.

We welcome your comments at validation@mail.wwpdb.org

A user guide is available at

<https://www.wwpdb.org/validation/2017/XrayValidationReportHelp>

with specific help available everywhere you see the ⓘ symbol.

The types of validation reports are described at

<http://www.wwpdb.org/validation/2017/FAQs#types>.

The following versions of software and data (see [references ⓘ](#)) were used in the production of this report:

MolProbity : 4.02b-467
Mogul : 1.8.5 (274361), CSD as541be (2020)
Xtriage (Phenix) : 1.13
EDS : 2.36
buster-report : 1.1.7 (2018)
Percentile statistics : 20191225.v01 (using entries in the PDB archive December 25th 2019)
Refmac : 5.8.0158
CCP4 : 7.0.044 (Gargrove)
Ideal geometry (proteins) : Engh & Huber (2001)
Ideal geometry (DNA, RNA) : Parkinson et al. (1996)
Validation Pipeline (wwPDB-VP) : 2.36

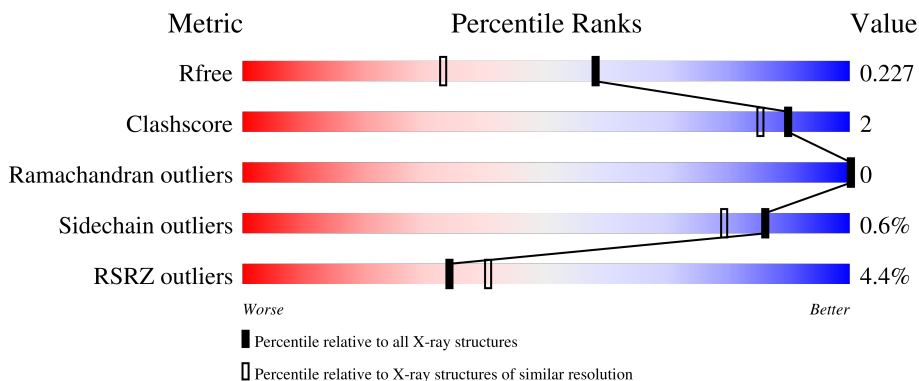
1 Overall quality at a glance

The following experimental techniques were used to determine the structure:

X-RAY DIFFRACTION

The reported resolution of this entry is 1.75 Å.

Percentile scores (ranging between 0-100) for global validation metrics of the entry are shown in the following graphic. The table shows the number of entries on which the scores are based.



Metric	Whole archive (#Entries)	Similar resolution (#Entries, resolution range(Å))
R_{free}	130704	2340 (1.76-1.76)
Clashscore	141614	2466 (1.76-1.76)
Ramachandran outliers	138981	2437 (1.76-1.76)
Sidechain outliers	138945	2437 (1.76-1.76)
RSRZ outliers	127900	2298 (1.76-1.76)

The table below summarises the geometric issues observed across the polymeric chains and their fit to the electron density. The red, orange, yellow and green segments of the lower bar indicate the fraction of residues that contain outliers for ≥ 3 , 2, 1 and 0 types of geometric quality criteria respectively. A grey segment represents the fraction of residues that are not modelled. The numeric value for each fraction is indicated below the corresponding segment, with a dot representing fractions $\leq 5\%$. The upper red bar (where present) indicates the fraction of residues that have poor fit to the electron density. The numeric value is given above the bar.

Mol	Chain	Length	Quality of chain
1	A	501	 4% 91% 6%
1	B	501	 4% 89% 5% 6%

The following table lists non-polymeric compounds, carbohydrate monomers and non-standard residues in protein, DNA, RNA chains that are outliers for geometric or electron-density-fit criteria:

Mol	Type	Chain	Res	Chirality	Geometry	Clashes	Electron density
3	PO4	A	602	-	-	-	X

2 Entry composition [i](#)

There are 5 unique types of molecules in this entry. The entry contains 8573 atoms, of which 0 are hydrogens and 0 are deuteriums.

In the tables below, the ZeroOcc column contains the number of atoms modelled with zero occupancy, the AltConf column contains the number of residues with at least one atom in alternate conformation and the Trace column contains the number of residues modelled with at most 2 atoms.

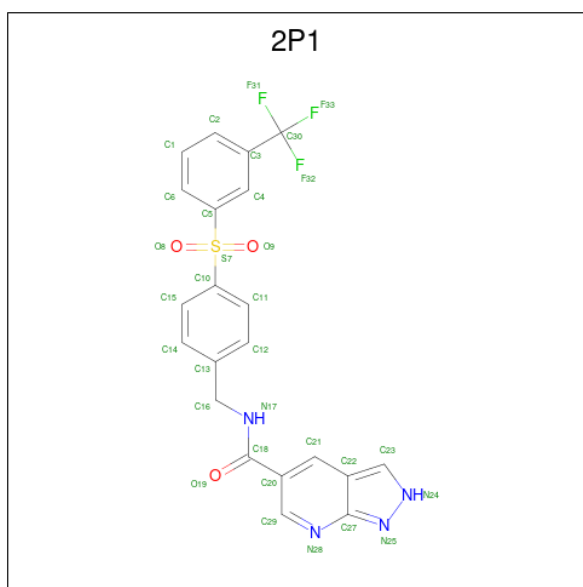
- Molecule 1 is a protein called Nicotinamide phosphoribosyltransferase.

Mol	Chain	Residues	Atoms					ZeroOcc	AltConf	Trace
			Total	C	N	O	S			
1	A	471	3773	2428	623	715	7	0	1	0
1	B	469	3755	2416	620	712	7	0	0	0

There are 20 discrepancies between the modelled and reference sequences:

Chain	Residue	Modelled	Actual	Comment	Reference
A	492	LEU	-	expression tag	UNP P43490
A	493	GLU	-	expression tag	UNP P43490
A	494	HIS	-	expression tag	UNP P43490
A	495	HIS	-	expression tag	UNP P43490
A	496	HIS	-	expression tag	UNP P43490
A	497	HIS	-	expression tag	UNP P43490
A	498	HIS	-	expression tag	UNP P43490
A	499	HIS	-	expression tag	UNP P43490
A	500	HIS	-	expression tag	UNP P43490
A	501	HIS	-	expression tag	UNP P43490
B	492	LEU	-	expression tag	UNP P43490
B	493	GLU	-	expression tag	UNP P43490
B	494	HIS	-	expression tag	UNP P43490
B	495	HIS	-	expression tag	UNP P43490
B	496	HIS	-	expression tag	UNP P43490
B	497	HIS	-	expression tag	UNP P43490
B	498	HIS	-	expression tag	UNP P43490
B	499	HIS	-	expression tag	UNP P43490
B	500	HIS	-	expression tag	UNP P43490
B	501	HIS	-	expression tag	UNP P43490

- Molecule 2 is N-(4-{{3-(trifluoromethyl)phenyl}sulfonyl}benzyl)-2H-pyrazolo[3,4-b]pyridine-5-carboxamide (three-letter code: 2P1) (formula: C₂₁H₁₅F₃N₄O₃S).



Mol	Chain	Residues	Atoms					ZeroOcc	AltConf		
			Total	C	F	N	O			S	
2	A	1	Total	32	21	3	4	3	1	0	0
2	B	1	Total	32	21	3	4	3	1	0	0

- Molecule 3 is PHOSPHATE ION (three-letter code: PO4) (formula: O₄P).



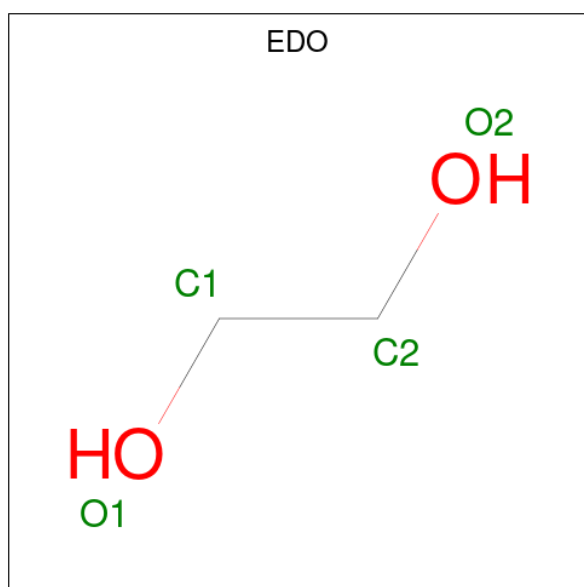
Mol	Chain	Residues	Atoms			ZeroOcc	AltConf	
			Total	O	P			
3	A	1	Total	5	4	1	0	0
3	A	1	Total	5	4	1	0	0

Continued on next page...

Continued from previous page...

Mol	Chain	Residues	Atoms	ZeroOcc	AltConf
3	B	1	Total O P 5 4 1	0	0
3	B	1	Total O P 5 4 1	0	0

- Molecule 4 is 1,2-ETHANEDIOL (three-letter code: EDO) (formula: C₂H₆O₂).



Mol	Chain	Residues	Atoms	ZeroOcc	AltConf
4	A	1	Total C O 4 2 2	0	0
4	A	1	Total C O 4 2 2	0	0
4	A	1	Total C O 4 2 2	0	0
4	A	1	Total C O 4 2 2	0	0
4	B	1	Total C O 4 2 2	0	0
4	B	1	Total C O 4 2 2	0	0
4	B	1	Total C O 4 2 2	0	0
4	B	1	Total C O 4 2 2	0	0

- Molecule 5 is water.

Mol	Chain	Residues	Atoms		ZeroOcc	AltConf
5	A	476	Total 476	O 476	0	0
5	B	453	Total 453	O 453	0	0

4 Data and refinement statistics

Property	Value	Source
Space group	P 1 21 1	Depositor
Cell constants a, b, c, α , β , γ	60.56Å 106.21Å 82.95Å 90.00° 96.39° 90.00°	Depositor
Resolution (Å)	34.86 – 1.75 46.22 – 1.75	Depositor EDS
% Data completeness (in resolution range)	99.1 (34.86-1.75) 99.1 (46.22-1.75)	Depositor EDS
R_{merge}	(Not available)	Depositor
R_{sym}	(Not available)	Depositor
$\langle I/\sigma(I) \rangle$ ¹	1.88 (at 1.75Å)	Xtrriage
Refinement program	PHENIX (phenix.refine: 1.7.3_928)	Depositor
R, R_{free}	0.197 , 0.227 0.197 , 0.227	Depositor DCC
R_{free} test set	5242 reflections (5.00%)	wwPDB-VP
Wilson B-factor (Å ²)	16.5	Xtrriage
Anisotropy	0.405	Xtrriage
Bulk solvent k_{sol} (e/Å ³), B_{sol} (Å ²)	0.37 , 44.1	EDS
L-test for twinning ²	$\langle L \rangle = 0.49$, $\langle L^2 \rangle = 0.32$	Xtrriage
Estimated twinning fraction	No twinning to report.	Xtrriage
F_o, F_c correlation	0.94	EDS
Total number of atoms	8573	wwPDB-VP
Average B, all atoms (Å ²)	18.0	wwPDB-VP

Xtrriage's analysis on translational NCS is as follows: *The largest off-origin peak in the Patterson function is 10.01% of the height of the origin peak. No significant pseudotranslation is detected.*

¹Intensities estimated from amplitudes.

²Theoretical values of $\langle |L| \rangle$, $\langle L^2 \rangle$ for acentric reflections are 0.5, 0.333 respectively for untwinned datasets, and 0.375, 0.2 for perfectly twinned datasets.

5 Model quality

5.1 Standard geometry

Bond lengths and bond angles in the following residue types are not validated in this section: 2P1, PO4, EDO

The Z score for a bond length (or angle) is the number of standard deviations the observed value is removed from the expected value. A bond length (or angle) with $|Z| > 5$ is considered an outlier worth inspection. RMSZ is the root-mean-square of all Z scores of the bond lengths (or angles).

Mol	Chain	Bond lengths		Bond angles	
		RMSZ	# Z >5	RMSZ	# Z >5
1	A	0.37	0/3861	0.54	0/5231
1	B	0.36	0/3843	0.52	0/5206
All	All	0.37	0/7704	0.53	0/10437

There are no bond length outliers.

There are no bond angle outliers.

There are no chirality outliers.

There are no planarity outliers.

5.2 Too-close contacts

In the following table, the Non-H and H(model) columns list the number of non-hydrogen atoms and hydrogen atoms in the chain respectively. The H(added) column lists the number of hydrogen atoms added and optimized by MolProbity. The Clashes column lists the number of clashes within the asymmetric unit, whereas Symm-Clashes lists symmetry-related clashes.

Mol	Chain	Non-H	H(model)	H(added)	Clashes	Symm-Clashes
1	A	3773	0	3749	9	0
1	B	3755	0	3735	17	0
2	A	32	0	15	0	0
2	B	32	0	15	1	0
3	A	10	0	0	1	0
3	B	10	0	0	1	0
4	A	16	0	24	1	0
4	B	16	0	24	4	0
5	A	476	0	0	6	1
5	B	453	0	0	2	1
All	All	8573	0	7562	28	1

The all-atom clashscore is defined as the number of clashes found per 1000 atoms (including hydrogen atoms). The all-atom clashscore for this structure is 2.

All (28) close contacts within the same asymmetric unit are listed below, sorted by their clash magnitude.

Atom-1	Atom-2	Interatomic distance (Å)	Clash overlap (Å)
1:B:434:ARG:HG2	1:B:457:LEU:HD11	1.72	0.69
3:A:603:PO4:O3	5:A:814:HOH:O	2.13	0.64
1:B:396:ASN:HA	4:B:605:EDO:H22	1.79	0.63
1:A:177:LEU:HD22	1:A:484:ILE:HD11	1.82	0.62
5:A:956:HOH:O	1:B:206:ILE:HG21	2.08	0.52
1:B:451:GLU:OE2	1:B:455:GLN:NE2	2.44	0.51
1:B:396:ASN:HD22	4:B:605:EDO:H22	1.75	0.51
1:B:396:ASN:HD22	4:B:605:EDO:C2	2.23	0.50
5:A:956:HOH:O	1:B:157:TYR:HD2	1.93	0.50
1:B:187:GLU:H	1:B:187:GLU:CD	2.15	0.49
1:A:172:LEU:HD21	1:A:361:LEU:HD11	1.95	0.48
1:B:336:GLU:OE1	5:B:897:HOH:O	2.19	0.48
3:B:602:PO4:O2	5:B:839:HOH:O	2.21	0.46
1:B:32:LYS:HB3	1:B:405:VAL:HB	1.97	0.46
1:B:114:ILE:HD11	1:B:144:LEU:HG	1.97	0.46
1:B:70:LEU:HD11	1:B:151:ILE:HD11	1.99	0.45
1:B:37:PHE:CZ	1:B:397:CYS:HB3	2.53	0.44
1:A:259:LYS:NZ	5:A:1152:HOH:O	2.50	0.44
1:B:354:ASP:OD2	4:B:606:EDO:H11	2.18	0.43
1:B:191:HIS:CG	2:B:601:2P1:H5	2.53	0.43
1:A:414:PHE:CE2	1:A:427:LYS:HE2	2.54	0.43
1:B:175:TYR:HB3	1:B:375:ILE:HG13	2.01	0.42
1:A:354:ASP:OD1	5:A:732:HOH:O	2.22	0.41
1:A:396:ASN:HD22	4:A:604:EDO:C2	2.33	0.41
1:B:331:LYS:HA	1:B:331:LYS:HD3	1.90	0.41
1:A:175:TYR:HB3	1:A:375:ILE:HG13	2.02	0.41
1:A:199:SER:O	5:A:956:HOH:O	2.22	0.41
1:A:66:LEU:HD23	1:A:70:LEU:HD12	2.01	0.40

All (1) symmetry-related close contacts are listed below. The label for Atom-2 includes the symmetry operator and encoded unit-cell translations to be applied.

Atom-1	Atom-2	Interatomic distance (Å)	Clash overlap (Å)
5:A:800:HOH:O	5:B:952:HOH:O[1_554]	2.10	0.10

5.3 Torsion angles [i](#)

5.3.1 Protein backbone [i](#)

In the following table, the Percentiles column shows the percent Ramachandran outliers of the chain as a percentile score with respect to all X-ray entries followed by that with respect to entries of similar resolution.

The Analysed column shows the number of residues for which the backbone conformation was analysed, and the total number of residues.

Mol	Chain	Analysed	Favoured	Allowed	Outliers	Percentiles	
1	A	468/501 (93%)	458 (98%)	10 (2%)	0	100	100
1	B	465/501 (93%)	454 (98%)	11 (2%)	0	100	100
All	All	933/1002 (93%)	912 (98%)	21 (2%)	0	100	100

There are no Ramachandran outliers to report.

5.3.2 Protein sidechains [i](#)

In the following table, the Percentiles column shows the percent sidechain outliers of the chain as a percentile score with respect to all X-ray entries followed by that with respect to entries of similar resolution.

The Analysed column shows the number of residues for which the sidechain conformation was analysed, and the total number of residues.

Mol	Chain	Analysed	Rotameric	Outliers	Percentiles	
1	A	414/440 (94%)	412 (100%)	2 (0%)	88	83
1	B	413/440 (94%)	410 (99%)	3 (1%)	84	75
All	All	827/880 (94%)	822 (99%)	5 (1%)	86	79

All (5) residues with a non-rotameric sidechain are listed below:

Mol	Chain	Res	Type
1	A	18	TYR
1	A	195	TYR
1	B	18	TYR
1	B	94	ASP
1	B	195	TYR

Sometimes sidechains can be flipped to improve hydrogen bonding and reduce clashes. There are no such sidechains identified.

5.3.3 RNA [i](#)

There are no RNA molecules in this entry.

5.4 Non-standard residues in protein, DNA, RNA chains [i](#)

There are no non-standard protein/DNA/RNA residues in this entry.

5.5 Carbohydrates [i](#)

There are no monosaccharides in this entry.

5.6 Ligand geometry [i](#)

14 ligands are modelled in this entry.

In the following table, the Counts columns list the number of bonds (or angles) for which Mogul statistics could be retrieved, the number of bonds (or angles) that are observed in the model and the number of bonds (or angles) that are defined in the Chemical Component Dictionary. The Link column lists molecule types, if any, to which the group is linked. The Z score for a bond length (or angle) is the number of standard deviations the observed value is removed from the expected value. A bond length (or angle) with $|Z| > 2$ is considered an outlier worth inspection. RMSZ is the root-mean-square of all Z scores of the bond lengths (or angles).

Mol	Type	Chain	Res	Link	Bond lengths			Bond angles		
					Counts	RMSZ	# Z > 2	Counts	RMSZ	# Z > 2
4	EDO	A	607	-	3,3,3	0.43	0	2,2,2	0.43	0
2	2P1	A	601	-	35,35,35	1.09	4 (11%)	46,52,52	1.83	9 (19%)
4	EDO	B	607	-	3,3,3	0.47	0	2,2,2	0.15	0
4	EDO	B	604	-	3,3,3	0.47	0	2,2,2	0.39	0
4	EDO	A	606	-	3,3,3	0.44	0	2,2,2	0.49	0
4	EDO	B	605	-	3,3,3	0.43	0	2,2,2	0.44	0
3	PO4	A	603	-	4,4,4	0.90	0	6,6,6	0.54	0
4	EDO	A	604	-	3,3,3	0.42	0	2,2,2	0.41	0
3	PO4	B	603	-	4,4,4	0.90	0	6,6,6	0.64	0
3	PO4	B	602	-	4,4,4	0.88	0	6,6,6	0.54	0
3	PO4	A	602	-	4,4,4	0.73	0	6,6,6	0.59	0
4	EDO	A	605	-	3,3,3	0.54	0	2,2,2	0.22	0
2	2P1	B	601	-	35,35,35	1.05	4 (11%)	46,52,52	1.77	8 (17%)
4	EDO	B	606	-	3,3,3	0.46	0	2,2,2	0.32	0

In the following table, the Chirals column lists the number of chiral outliers, the number of chiral centers analysed, the number of these observed in the model and the number defined in the

Chemical Component Dictionary. Similar counts are reported in the Torsion and Rings columns. '-' means no outliers of that kind were identified.

Mol	Type	Chain	Res	Link	Chirals	Torsions	Rings
4	EDO	A	607	-	-	1/1/1/1	-
2	2P1	A	601	-	-	0/27/27/27	0/4/4/4
4	EDO	B	607	-	-	0/1/1/1	-
4	EDO	B	604	-	-	0/1/1/1	-
4	EDO	A	606	-	-	0/1/1/1	-
4	EDO	B	605	-	-	0/1/1/1	-
4	EDO	A	604	-	-	1/1/1/1	-
4	EDO	A	605	-	-	0/1/1/1	-
2	2P1	B	601	-	-	0/27/27/27	0/4/4/4
4	EDO	B	606	-	-	0/1/1/1	-

All (8) bond length outliers are listed below:

Mol	Chain	Res	Type	Atoms	Z	Observed(Å)	Ideal(Å)
2	A	601	2P1	C27-N28	-3.10	1.32	1.37
2	B	601	2P1	C27-N28	-2.80	1.33	1.37
2	A	601	2P1	C23-C22	2.52	1.46	1.40
2	B	601	2P1	C23-C22	2.33	1.45	1.40
2	B	601	2P1	F31-C30	2.05	1.40	1.32
2	B	601	2P1	F33-C30	2.03	1.40	1.32
2	A	601	2P1	F33-C30	2.03	1.40	1.32
2	A	601	2P1	F31-C30	2.01	1.40	1.32

All (17) bond angle outliers are listed below:

Mol	Chain	Res	Type	Atoms	Z	Observed(°)	Ideal(°)
2	A	601	2P1	C20-C29-N28	-5.53	120.80	125.19
2	A	601	2P1	C29-N28-C27	5.39	122.11	116.69
2	B	601	2P1	C20-C29-N28	-5.37	120.93	125.19
2	B	601	2P1	C29-N28-C27	4.56	121.27	116.69
2	B	601	2P1	C21-C20-C29	3.67	120.53	116.87
2	A	601	2P1	O9-S7-C5	-3.46	104.07	107.97
2	A	601	2P1	C21-C20-C29	3.35	120.20	116.87
2	B	601	2P1	C10-S7-C5	-2.83	99.36	104.35
2	B	601	2P1	C20-C21-C22	-2.74	117.00	121.24
2	A	601	2P1	C20-C21-C22	-2.61	117.21	121.24
2	A	601	2P1	O8-S7-C10	2.55	110.84	107.97
2	B	601	2P1	C3-C4-C5	2.46	120.84	118.95
2	A	601	2P1	C10-S7-C5	-2.43	100.06	104.35
2	B	601	2P1	O9-S7-O8	2.43	123.88	119.23

Continued on next page...

Continued from previous page...

Mol	Chain	Res	Type	Atoms	Z	Observed(°)	Ideal(°)
2	A	601	2P1	C16-N17-C18	-2.13	116.77	121.81
2	B	601	2P1	O9-S7-C5	-2.09	105.62	107.97
2	A	601	2P1	O9-S7-O8	2.01	123.06	119.23

There are no chirality outliers.

All (2) torsion outliers are listed below:

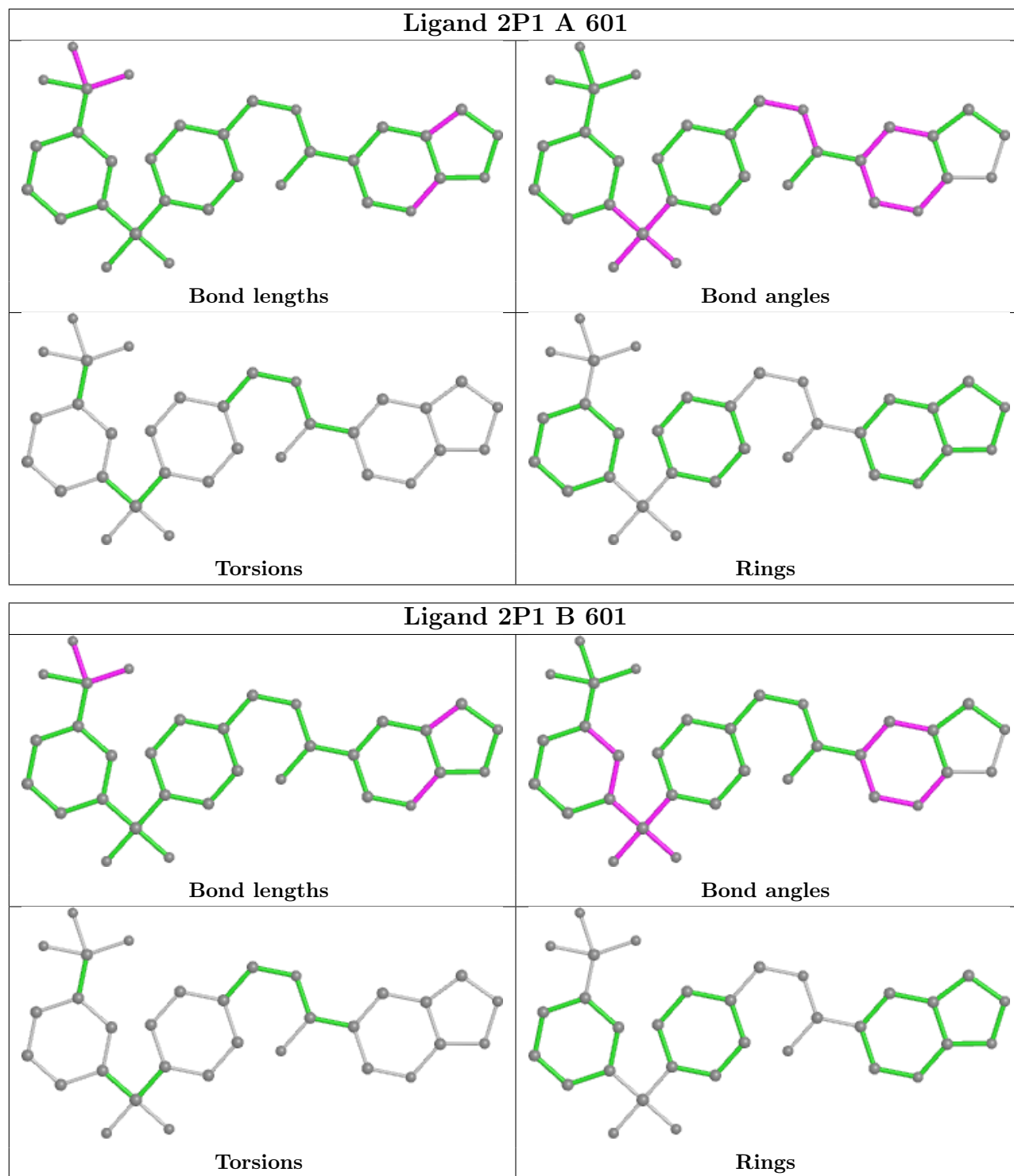
Mol	Chain	Res	Type	Atoms
4	A	604	EDO	O1-C1-C2-O2
4	A	607	EDO	O1-C1-C2-O2

There are no ring outliers.

6 monomers are involved in 8 short contacts:

Mol	Chain	Res	Type	Clashes	Symm-Clashes
4	B	605	EDO	3	0
3	A	603	PO4	1	0
4	A	604	EDO	1	0
3	B	602	PO4	1	0
2	B	601	2P1	1	0
4	B	606	EDO	1	0

The following is a two-dimensional graphical depiction of Mogul quality analysis of bond lengths, bond angles, torsion angles, and ring geometry for all instances of the Ligand of Interest. In addition, ligands with molecular weight > 250 and outliers as shown on the validation Tables will also be included. For torsion angles, if less than 5% of the Mogul distribution of torsion angles is within 10 degrees of the torsion angle in question, then that torsion angle is considered an outlier. Any bond that is central to one or more torsion angles identified as an outlier by Mogul will be highlighted in the graph. For rings, the root-mean-square deviation (RMSD) between the ring in question and similar rings identified by Mogul is calculated over all ring torsion angles. If the average RMSD is greater than 60 degrees and the minimal RMSD between the ring in question and any Mogul-identified rings is also greater than 60 degrees, then that ring is considered an outlier. The outliers are highlighted in purple. The color gray indicates Mogul did not find sufficient equivalents in the CSD to analyse the geometry.



5.7 Other polymers [i](#)

There are no such residues in this entry.

5.8 Polymer linkage issues

There are no chain breaks in this entry.

6 Fit of model and data [i](#)

6.1 Protein, DNA and RNA chains [i](#)

In the following table, the column labelled ‘#RSRZ > 2’ contains the number (and percentage) of RSRZ outliers, followed by percent RSRZ outliers for the chain as percentile scores relative to all X-ray entries and entries of similar resolution. The OWAB column contains the minimum, median, 95th percentile and maximum values of the occupancy-weighted average B-factor per residue. The column labelled ‘Q < 0.9’ lists the number of (and percentage) of residues with an average occupancy less than 0.9.

Mol	Chain	Analysed	<RSRZ>	#RSRZ>2	OWAB(Å ²)	Q<0.9
1	A	471/501 (94%)	0.59	20 (4%) 36 42	9, 16, 30, 57	0
1	B	469/501 (93%)	0.55	21 (4%) 33 39	9, 15, 28, 61	0
All	All	940/1002 (93%)	0.57	41 (4%) 34 40	9, 16, 29, 61	0

All (41) RSRZ outliers are listed below:

Mol	Chain	Res	Type	RSRZ
1	B	409	LEU	5.4
1	B	484	ILE	4.5
1	B	450	LEU	4.4
1	A	486	LEU	4.4
1	B	451	GLU	3.8
1	B	486	LEU	3.8
1	A	370	GLN	3.5
1	A	453	TYR	3.5
1	B	77	LYS	3.4
1	B	88	LYS	3.4
1	A	204	ALA	3.2
1	B	94	ASP	3.0
1	A	450	LEU	2.9
1	B	62	LEU	2.8
1	A	53	LYS	2.8
1	A	451	GLU	2.8
1	A	151[A]	ILE	2.8
1	B	411	ILE	2.8
1	A	455	GLN	2.7
1	B	148	ILE	2.6
1	B	151	ILE	2.5
1	A	454	GLY	2.5
1	A	236	PRO	2.4
1	B	42	LYS	2.4

Continued on next page...

Continued from previous page...

Mol	Chain	Res	Type	RSRZ
1	B	156	TRP	2.4
1	A	386	LEU	2.4
1	B	204	ALA	2.4
1	B	104	ILE	2.2
1	A	198	VAL	2.2
1	A	186	LEU	2.2
1	A	206	ILE	2.2
1	A	43	LYS	2.1
1	B	23	TYR	2.1
1	A	161	VAL	2.1
1	A	459	HIS	2.1
1	B	446	GLY	2.1
1	A	190	LEU	2.1
1	B	157	TYR	2.0
1	B	419	ALA	2.0
1	B	226	LEU	2.0
1	A	94	ASP	2.0

6.2 Non-standard residues in protein, DNA, RNA chains [i](#)

There are no non-standard protein/DNA/RNA residues in this entry.

6.3 Carbohydrates [i](#)

There are no monosaccharides in this entry.

6.4 Ligands [i](#)

In the following table, the Atoms column lists the number of modelled atoms in the group and the number defined in the chemical component dictionary. The B-factors column lists the minimum, median, 95th percentile and maximum values of B factors of atoms in the group. The column labelled 'Q< 0.9' lists the number of atoms with occupancy less than 0.9.

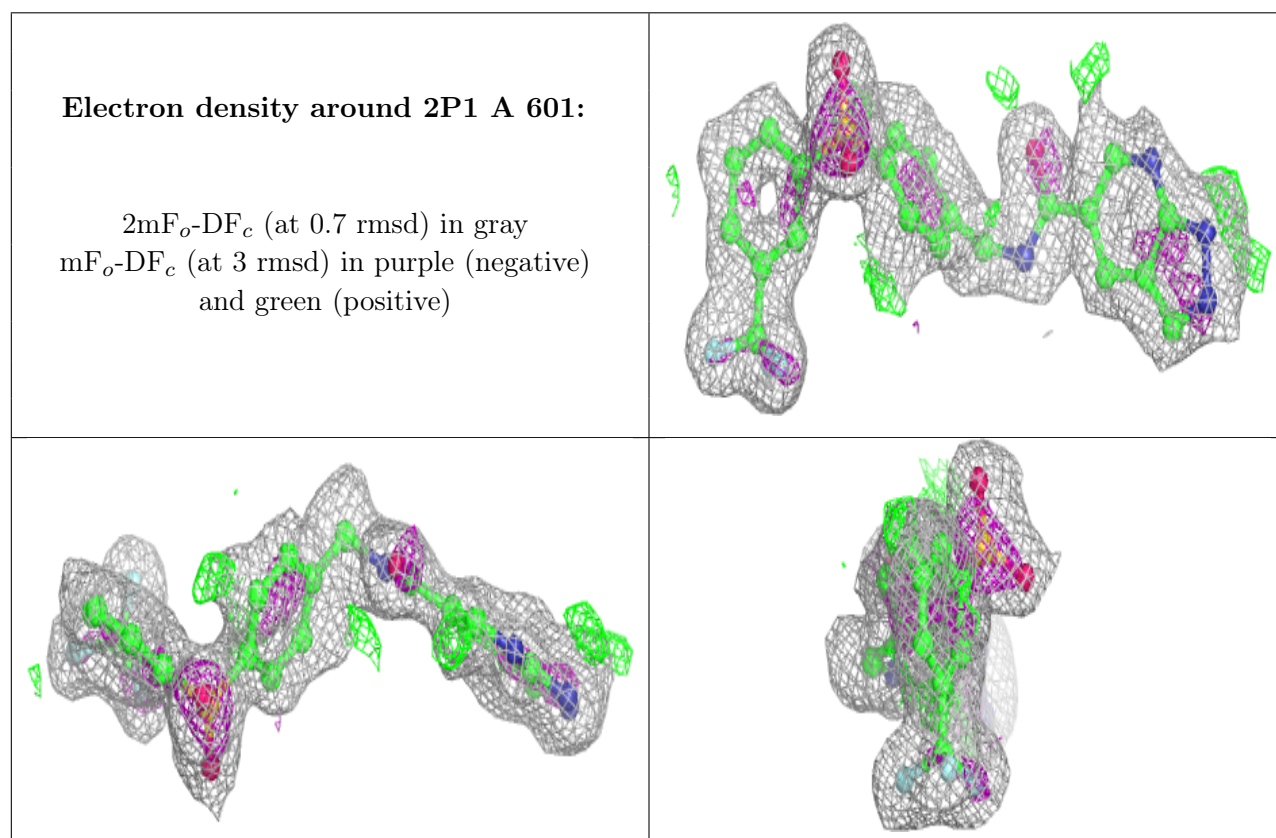
Mol	Type	Chain	Res	Atoms	RSCC	RSR	B-factors(Å ²)	Q<0.9
4	EDO	A	606	4/4	0.60	0.23	34,35,35,41	0
4	EDO	B	606	4/4	0.66	0.27	31,33,34,37	0
4	EDO	B	605	4/4	0.70	0.37	34,38,38,41	0
3	PO4	B	603	5/5	0.73	0.39	22,42,46,55	0
3	PO4	A	602	5/5	0.78	0.40	24,36,47,48	0
3	PO4	B	602	5/5	0.79	0.19	35,36,39,40	0

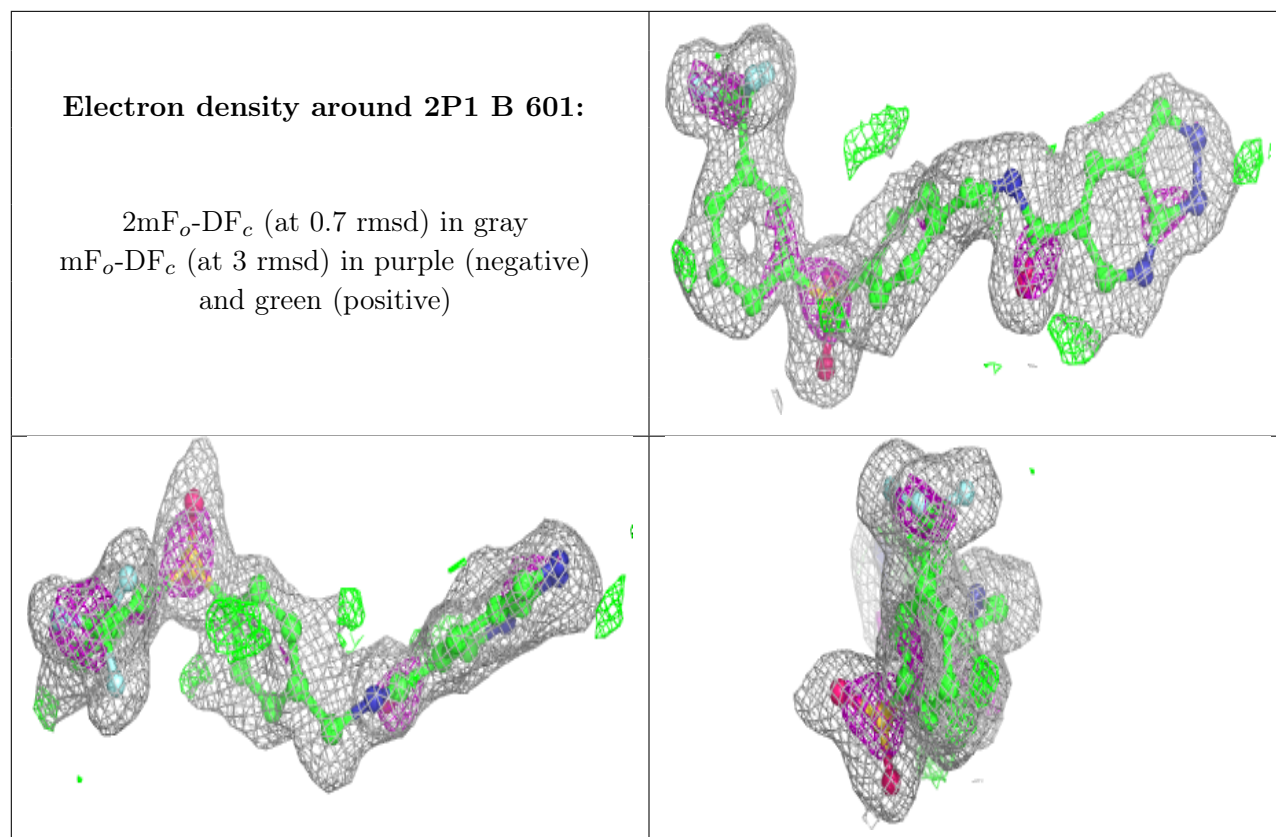
Continued on next page...

Continued from previous page...

Mol	Type	Chain	Res	Atoms	RSCC	RSR	B-factors(\AA^2)	Q<0.9
4	EDO	A	604	4/4	0.81	0.31	35,36,36,37	0
4	EDO	B	607	4/4	0.82	0.17	27,27,31,36	0
4	EDO	A	605	4/4	0.85	0.14	21,22,28,28	0
3	PO4	A	603	5/5	0.89	0.18	33,36,41,46	0
2	2P1	A	601	32/32	0.92	0.12	11,18,21,23	0
2	2P1	B	601	32/32	0.92	0.11	12,17,20,20	0
4	EDO	B	604	4/4	0.93	0.15	15,17,17,21	0
4	EDO	A	607	4/4	0.93	0.11	15,19,21,22	0

The following is a graphical depiction of the model fit to experimental electron density of all instances of the Ligand of Interest. In addition, ligands with molecular weight > 250 and outliers as shown on the geometry validation Tables will also be included. Each fit is shown from different orientation to approximate a three-dimensional view.





6.5 Other polymers [i](#)

There are no such residues in this entry.