



Full wwPDB X-ray Structure Validation Report ⓘ

Mar 9, 2018 – 04:59 pm GMT

PDB ID : 5O2W
Title : Extended catalytic domain of Hypocrea jecorina LP MO 9A.
Authors : Karkehabadi, S.; Hansson, H.; Sandgren, M.; Mikelssen, N.E.
Deposited on : 2017-05-23
Resolution : 2.00 Å(reported)

This is a Full wwPDB X-ray Structure Validation Report for a publicly released PDB entry.

We welcome your comments at validation@mail.wwpdb.org

A user guide is available at

<https://www.wwpdb.org/validation/2017/XrayValidationReportHelp>

with specific help available everywhere you see the ⓘ symbol.

The following versions of software and data (see [references ⓘ](#)) were used in the production of this report:

MolProbity : 4.02b-467
Mogul : 1.7.3 (157068), CSD as539be (2018)
Xtrriage (Phenix) : 1.13
EDS : trunk30967
Percentile statistics : 20171227.v01 (using entries in the PDB archive December 27th 2017)
Refmac : 5.8.0158
CCP4 : 7.0 (Gargrove)
Ideal geometry (proteins) : Engh & Huber (2001)
Ideal geometry (DNA, RNA) : Parkinson et al. (1996)
Validation Pipeline (wwPDB-VP) : trunk30967

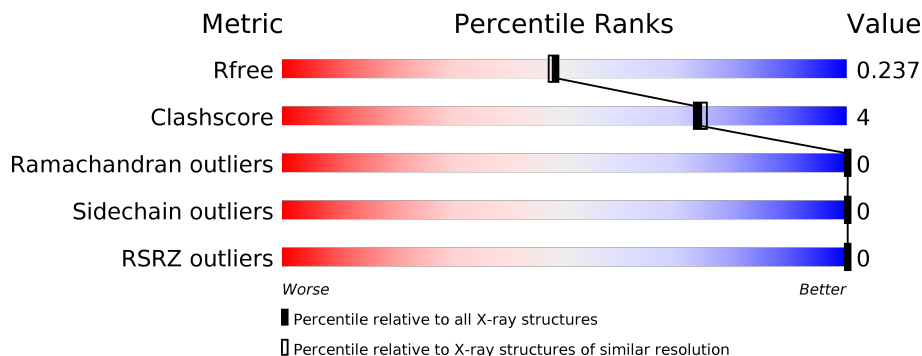
1 Overall quality at a glance

The following experimental techniques were used to determine the structure:

X-RAY DIFFRACTION


The reported resolution of this entry is 2.00 Å.

Percentile scores (ranging between 0-100) for global validation metrics of the entry are shown in the following graphic. The table shows the number of entries on which the scores are based.



Metric	Whole archive (#Entries)	Similar resolution (#Entries, resolution range(Å))
R_{free}	111664	7193 (2.00-2.00)
Clashscore	122126	8267 (2.00-2.00)
Ramachandran outliers	120053	8166 (2.00-2.00)
Sidechain outliers	120020	8165 (2.00-2.00)
RSRZ outliers	108989	7011 (2.00-2.00)

The table below summarises the geometric issues observed across the polymeric chains and their fit to the electron density. The red, orange, yellow and green segments on the lower bar indicate the fraction of residues that contain outliers for ≥ 3 , 2, 1 and 0 types of geometric quality criteria. A grey segment represents the fraction of residues that are not modelled. The numeric value for each fraction is indicated below the corresponding segment, with a dot representing fractions $\leq 5\%$. The upper red bar (where present) indicates the fraction of residues that have poor fit to the electron density. The numeric value is given above the bar.

Mol	Chain	Length	Quality of chain
1	A	248	 92% 8%

2 Entry composition [i](#)

There are 6 unique types of molecules in this entry. The entry contains 2494 atoms, of which 0 are hydrogens and 0 are deuteriums.

In the tables below, the ZeroOcc column contains the number of atoms modelled with zero occupancy, the AltConf column contains the number of residues with at least one atom in alternate conformation and the Trace column contains the number of residues modelled with at most 2 atoms.

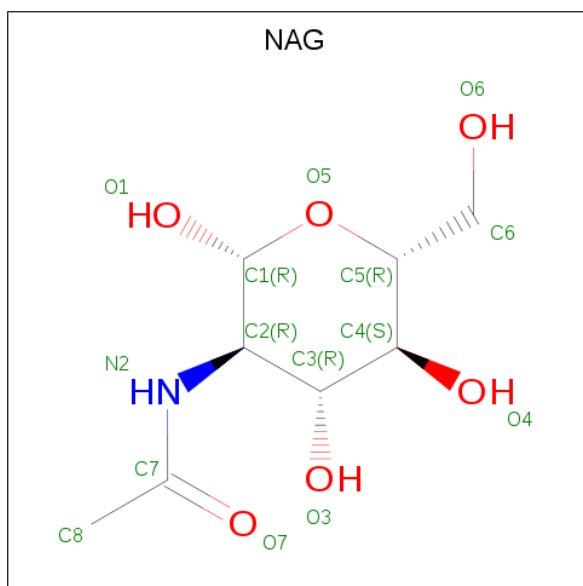
- Molecule 1 is a protein called Glycoside hydrolase family 61.

Mol	Chain	Residues	Atoms					ZeroOcc	AltConf	Trace
			Total	C	N	O	S			
1	A	248	1931	1239	315	373	4	0	17	0

There is a discrepancy between the modelled and reference sequences:

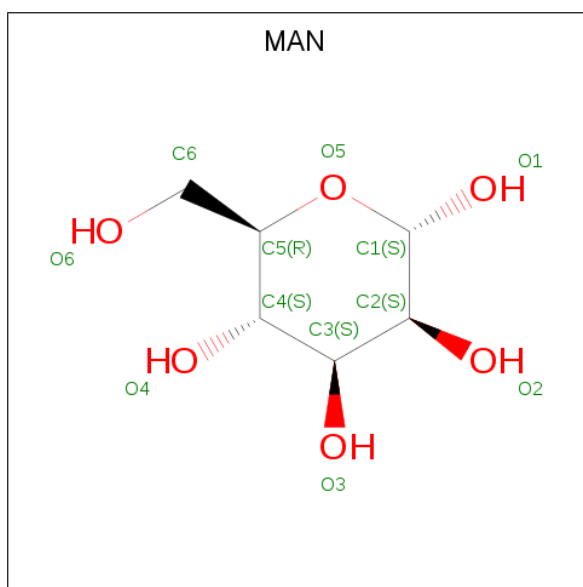
Chain	Residue	Modelled	Actual	Comment	Reference
A	1	HIC	-	expression tag	UNP G0R6T8

- Molecule 2 is N-ACETYL-D-GLUCOSAMINE (three-letter code: NAG) (formula: $C_8H_{15}NO_6$).



Mol	Chain	Residues	Atoms				ZeroOcc	AltConf
			Total	C	N	O		
2	A	1	15	8	1	6	0	1
2	A	1	14	8	1	5	0	0

- Molecule 3 is ALPHA-D-MANNOSE (three-letter code: MAN) (formula: $C_6H_{12}O_6$).



Mol	Chain	Residues	Atoms	ZeroOcc	AltConf
3	A	1	Total C O 11 6 5	0	0
3	A	1	Total C O 11 6 5	0	0
3	A	1	Total C O 11 6 5	0	0
3	A	1	Total C O 11 6 5	0	0
3	A	1	Total C O 11 6 5	0	0
3	A	1	Total C O 11 6 5	0	0
3	A	1	Total C O 11 6 5	0	0
3	A	1	Total C O 11 6 5	0	0
3	A	1	Total C O 11 6 5	0	0
3	A	1	Total C O 11 6 5	0	0
3	A	1	Total C O 11 6 5	0	0
3	A	1	Total C O 11 6 5	0	0
3	A	1	Total C O 11 6 5	0	0
3	A	1	Total C O 11 6 5	0	0

Continued on next page...

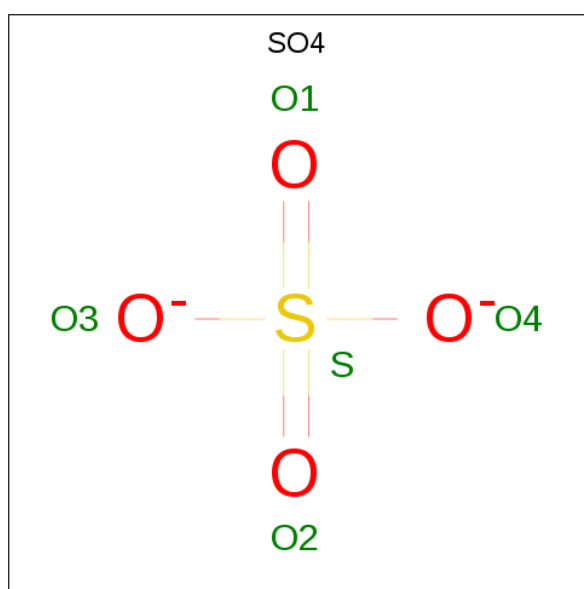
Continued from previous page...

Mol	Chain	Residues	Atoms			ZeroOcc	AltConf
3	A	1	Total	C	O	0	0
			11	6	5		

- Molecule 4 is COPPER (II) ION (three-letter code: CU) (formula: Cu).

Mol	Chain	Residues	Atoms		ZeroOcc	AltConf
4	A	1	Total	Cu	0	0
			1	1		

- Molecule 5 is SULFATE ION (three-letter code: SO4) (formula: O₄S).



Mol	Chain	Residues	Atoms			ZeroOcc	AltConf
5	A	1	Total	O	S	0	0
			5	4	1		
5	A	1	Total	O	S	0	0
			5	4	1		
5	A	1	Total	O	S	0	0
			5	4	1		

- Molecule 6 is water.

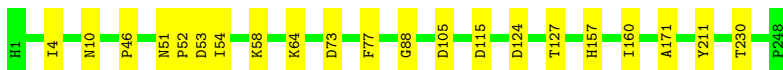
Mol	Chain	Residues	Atoms		ZeroOcc	AltConf
6	A	343	Total	O	0	17
			353	353		

3 Residue-property plots [i](#)

These plots are drawn for all protein, RNA and DNA chains in the entry. The first graphic for a chain summarises the proportions of the various outlier classes displayed in the second graphic. The second graphic shows the sequence view annotated by issues in geometry and electron density. Residues are color-coded according to the number of geometric quality criteria for which they contain at least one outlier: green = 0, yellow = 1, orange = 2 and red = 3 or more. A red dot above a residue indicates a poor fit to the electron density ($RSRZ > 2$). Stretches of 2 or more consecutive residues without any outlier are shown as a green connector. Residues present in the sample, but not in the model, are shown in grey.

- Molecule 1: Glycoside hydrolase family 61

Chain A:  92% 8%



4 Data and refinement statistics

Property	Value	Source
Space group	P 1 21 1	Depositor
Cell constants a, b, c, α , β , γ	42.94Å 62.12Å 48.02Å 90.00° 111.79° 90.00°	Depositor
Resolution (Å)	44.58 – 2.00 39.87 – 2.00	Depositor EDS
% Data completeness (in resolution range)	95.6 (44.58-2.00) 95.6 (39.87-2.00)	Depositor EDS
R_{merge}	(Not available)	Depositor
R_{sym}	(Not available)	Depositor
$\langle I/\sigma(I) \rangle$ ¹	3.13 (at 2.00Å)	Xtrriage
Refinement program	REFMAC 5.8.0071	Depositor
R, R_{free}	0.200 , 0.238 0.208 , 0.237	Depositor DCC
R_{free} test set	795 reflections (5.21%)	wwPDB-VP
Wilson B-factor (Å ²)	5.6	Xtrriage
Anisotropy	0.544	Xtrriage
Bulk solvent k_{sol} (e/Å ³), B_{sol} (Å ²)	0.31 , 49.2	EDS
L-test for twinning ²	$\langle L \rangle = 0.48$, $\langle L^2 \rangle = 0.31$	Xtrriage
Estimated twinning fraction	No twinning to report.	Xtrriage
F_o, F_c correlation	0.84	EDS
Total number of atoms	2494	wwPDB-VP
Average B, all atoms (Å ²)	10.0	wwPDB-VP

Xtrriage's analysis on translational NCS is as follows: *The largest off-origin peak in the Patterson function is 8.65% of the height of the origin peak. No significant pseudotranslation is detected.*

¹Intensities estimated from amplitudes.

²Theoretical values of $\langle |L| \rangle$, $\langle L^2 \rangle$ for acentric reflections are 0.5, 0.333 respectively for untwinned datasets, and 0.375, 0.2 for perfectly twinned datasets.

5 Model quality [i](#)

5.1 Standard geometry [i](#)

Bond lengths and bond angles in the following residue types are not validated in this section: MAN, HIC, NAG, CU, SO4

The Z score for a bond length (or angle) is the number of standard deviations the observed value is removed from the expected value. A bond length (or angle) with $|Z| > 5$ is considered an outlier worth inspection. RMSZ is the root-mean-square of all Z scores of the bond lengths (or angles).

Mol	Chain	Bond lengths		Bond angles	
		RMSZ	# Z >5	RMSZ	# Z >5
1	A	0.76	0/2015	0.82	3/2779 (0.1%)

There are no bond length outliers.

All (3) bond angle outliers are listed below:

Mol	Chain	Res	Type	Atoms	Z	Observed(°)	Ideal(°)
1	A	53	ASP	CB-CG-OD1	6.97	124.58	118.30
1	A	53	ASP	CB-CG-OD2	-6.24	112.68	118.30
1	A	105	ASP	CB-CG-OD1	5.17	122.95	118.30

There are no chirality outliers.

There are no planarity outliers.

5.2 Too-close contacts [i](#)

In the following table, the Non-H and H(model) columns list the number of non-hydrogen atoms and hydrogen atoms in the chain respectively. The H(added) column lists the number of hydrogen atoms added and optimized by MolProbity. The Clashes column lists the number of clashes within the asymmetric unit, whereas Symm-Clashes lists symmetry related clashes.

Mol	Chain	Non-H	H(model)	H(added)	Clashes	Symm-Clashes
1	A	1931	0	1861	15	0
2	A	29	0	19	0	0
3	A	165	0	150	0	0
4	A	1	0	0	0	0
5	A	15	0	0	1	0
6	A	353	0	0	4	1
All	All	2494	0	2030	15	1

The all-atom clashscore is defined as the number of clashes found per 1000 atoms (including hydrogen atoms). The all-atom clashscore for this structure is 4.

All (15) close contacts within the same asymmetric unit are listed below, sorted by their clash magnitude.

Atom-1	Atom-2	Interatomic distance (Å)	Clash overlap (Å)
1:A:64:LYS:HE3	6:A:694[A]:HOH:O	1.95	0.66
1:A:4[B]:ILE:HD12	1:A:77:PHE:HB3	1.90	0.52
1:A:58:LYS:HE3	6:A:449:HOH:O	2.09	0.51
1:A:115:ASP:HB2	1:A:230:THR:O	2.12	0.48
1:A:46:PRO:HD3	1:A:171:ALA:O	2.15	0.46
1:A:88:GLY:HA3	1:A:160:ILE:O	2.16	0.45
1:A:4[B]:ILE:CD1	1:A:77:PHE:HB3	2.48	0.44
1:A:124:ASP:HA	1:A:211:TYR:HA	2.00	0.42
1:A:51[A]:ASN:CG	1:A:52[A]:PRO:HD2	2.39	0.42
1:A:64:LYS:CE	6:A:694[A]:HOH:O	2.60	0.42
1:A:10[A]:ASN:OD1	6:A:402:HOH:O	2.22	0.42
1:A:127:THR:OG1	5:A:320:SO4:O4	2.38	0.41
1:A:4[A]:ILE:HD11	1:A:157:HIS:HD2	1.85	0.41
1:A:10[A]:ASN:ND2	1:A:73[A]:ASP:OD1	2.53	0.40

All (1) symmetry-related close contacts are listed below. The label for Atom-2 includes the symmetry operator and encoded unit-cell translations to be applied.

Atom-1	Atom-2	Interatomic distance (Å)	Clash overlap (Å)
6:A:476:HOH:O	6:A:704:HOH:O[2_747]	1.84	0.36

5.3 Torsion angles [i](#)

5.3.1 Protein backbone [i](#)

In the following table, the Percentiles column shows the percent Ramachandran outliers of the chain as a percentile score with respect to all X-ray entries followed by that with respect to entries of similar resolution.

The Analysed column shows the number of residues for which the backbone conformation was analysed, and the total number of residues.

Mol	Chain	Analysed	Favoured	Allowed	Outliers	Percentiles
1	A	262/248 (106%)	255 (97%)	7 (3%)	0	100 100

There are no Ramachandran outliers to report.

5.3.2 Protein sidechains [i](#)

In the following table, the Percentiles column shows the percent sidechain outliers of the chain as a percentile score with respect to all X-ray entries followed by that with respect to entries of similar resolution.

The Analysed column shows the number of residues for which the sidechain conformation was analysed, and the total number of residues.

Mol	Chain	Analysed	Rotameric	Outliers	Percentiles	
1	A	216/200 (108%)	216 (100%)	0	100	100

There are no protein residues with a non-rotameric sidechain to report.

Some sidechains can be flipped to improve hydrogen bonding and reduce clashes. All (2) such sidechains are listed below:

Mol	Chain	Res	Type
1	A	136	ASN
1	A	216	ASN

5.3.3 RNA [i](#)

There are no RNA molecules in this entry.

5.4 Non-standard residues in protein, DNA, RNA chains [i](#)

1 non-standard protein/DNA/RNA residue is modelled in this entry.

In the following table, the Counts columns list the number of bonds (or angles) for which Mogul statistics could be retrieved, the number of bonds (or angles) that are observed in the model and the number of bonds (or angles) that are defined in the Chemical Component Dictionary. The Link column lists molecule types, if any, to which the group is linked. The Z score for a bond length (or angle) is the number of standard deviations the observed value is removed from the expected value. A bond length (or angle) with $|Z| > 2$ is considered an outlier worth inspection. RMSZ is the root-mean-square of all Z scores of the bond lengths (or angles).

Mol	Type	Chain	Res	Link	Bond lengths			Bond angles		
					Counts	RMSZ	$\# Z > 2$	Counts	RMSZ	$\# Z > 2$
1	HIC	A	1	1,4	10,11,12	1.72	2 (20%)	7,14,16	1.01	1 (14%)

In the following table, the Chirals column lists the number of chiral outliers, the number of chiral centers analysed, the number of these observed in the model and the number defined in the Chemical Component Dictionary. Similar counts are reported in the Torsion and Rings columns. '·' means no outliers of that kind were identified.

Mol	Type	Chain	Res	Link	Chirals	Torsions	Rings
1	HIC	A	1	1,4	-	0/4/6/8	0/1/1/1

All (2) bond length outliers are listed below:

Mol	Chain	Res	Type	Atoms	Z	Observed(Å)	Ideal(Å)
1	A	1	HIC	CD2-NE2	-3.93	1.32	1.38
1	A	1	HIC	CE1-NE2	-2.55	1.33	1.36

All (1) bond angle outliers are listed below:

Mol	Chain	Res	Type	Atoms	Z	Observed(°)	Ideal(°)
1	A	1	HIC	CB-CA-C	-2.08	107.41	111.41

There are no chirality outliers.

There are no torsion outliers.

There are no ring outliers.

No monomer is involved in short contacts.

5.5 Carbohydrates [i](#)

There are no carbohydrates in this entry.

5.6 Ligand geometry [i](#)

Of 22 ligands modelled in this entry, 1 is monoatomic - leaving 21 for Mogul analysis.

In the following table, the Counts columns list the number of bonds (or angles) for which Mogul statistics could be retrieved, the number of bonds (or angles) that are observed in the model and the number of bonds (or angles) that are defined in the Chemical Component Dictionary. The Link column lists molecule types, if any, to which the group is linked. The Z score for a bond length (or angle) is the number of standard deviations the observed value is removed from the expected value. A bond length (or angle) with $|Z| > 2$ is considered an outlier worth inspection. RMSZ is the root-mean-square of all Z scores of the bond lengths (or angles).

Mol	Type	Chain	Res	Link	Bond lengths			Bond angles		
					Counts	RMSZ	$\# Z > 2$	Counts	RMSZ	$\# Z > 2$
2	NAG	A	301[A]	-	14,14,15	0.75	0	17,19,21	1.42	2 (11%)
2	NAG	A	301[B]	-	14,14,15	0.75	0	17,19,21	1.44	2 (11%)
2	NAG	A	302	1	14,14,15	0.70	0	17,19,21	1.87	3 (17%)
3	MAN	A	303	1	11,11,12	0.77	0	15,15,17	1.16	2 (13%)

Mol	Type	Chain	Res	Link	Bond lengths			Bond angles		
					Counts	RMSZ	# Z > 2	Counts	RMSZ	# Z > 2
3	MAN	A	304	1	11,11,12	0.67	0	15,15,17	1.17	1 (6%)
3	MAN	A	305	1	11,11,12	0.75	0	15,15,17	1.58	4 (26%)
3	MAN	A	306	1	11,11,12	0.84	0	15,15,17	1.04	0
3	MAN	A	307	1	11,11,12	0.66	0	15,15,17	0.91	1 (6%)
3	MAN	A	308	1	11,11,12	0.91	0	15,15,17	0.90	1 (6%)
3	MAN	A	309	1	11,11,12	0.71	0	15,15,17	1.18	1 (6%)
3	MAN	A	310	1	11,11,12	0.93	0	15,15,17	1.61	5 (33%)
3	MAN	A	311	1	11,11,12	0.91	0	15,15,17	1.39	2 (13%)
3	MAN	A	312	1	11,11,12	0.79	0	15,15,17	1.49	3 (20%)
3	MAN	A	313	1	11,11,12	0.88	0	15,15,17	1.44	3 (20%)
3	MAN	A	314	1	11,11,12	0.90	0	15,15,17	1.43	2 (13%)
3	MAN	A	315	1	11,11,12	1.02	1 (9%)	15,15,17	1.47	3 (20%)
3	MAN	A	316	1	11,11,12	0.44	0	15,15,17	1.36	2 (13%)
3	MAN	A	317	1	11,11,12	0.74	0	15,15,17	1.18	1 (6%)
5	SO4	A	319	-	4,4,4	0.46	0	6,6,6	0.36	0
5	SO4	A	320	-	4,4,4	0.51	0	6,6,6	0.15	0
5	SO4	A	321	-	4,4,4	0.46	0	6,6,6	0.34	0

In the following table, the Chirals column lists the number of chiral outliers, the number of chiral centers analysed, the number of these observed in the model and the number defined in the Chemical Component Dictionary. Similar counts are reported in the Torsion and Rings columns. '-' means no outliers of that kind were identified.

Mol	Type	Chain	Res	Link	Chirals	Torsions	Rings
2	NAG	A	301[A]	-	-	0/6/23/26	0/1/1/1
2	NAG	A	301[B]	-	-	0/6/23/26	0/1/1/1
2	NAG	A	302	1	-	0/6/23/26	0/1/1/1
3	MAN	A	303	1	-	0/2/19/22	0/1/1/1
3	MAN	A	304	1	-	0/2/19/22	0/1/1/1
3	MAN	A	305	1	-	0/2/19/22	0/1/1/1
3	MAN	A	306	1	-	0/2/19/22	0/1/1/1
3	MAN	A	307	1	-	0/2/19/22	0/1/1/1
3	MAN	A	308	1	-	0/2/19/22	0/1/1/1
3	MAN	A	309	1	-	0/2/19/22	0/1/1/1
3	MAN	A	310	1	-	0/2/19/22	0/1/1/1
3	MAN	A	311	1	-	0/2/19/22	0/1/1/1
3	MAN	A	312	1	-	0/2/19/22	0/1/1/1
3	MAN	A	313	1	-	0/2/19/22	0/1/1/1
3	MAN	A	314	1	-	0/2/19/22	0/1/1/1
3	MAN	A	315	1	-	0/2/19/22	0/1/1/1

Continued on next page...

Continued from previous page...

Mol	Type	Chain	Res	Link	Chirals	Torsions	Rings
3	MAN	A	316	1	-	0/2/19/22	0/1/1/1
3	MAN	A	317	1	-	0/2/19/22	0/1/1/1
5	SO4	A	319	-	-	0/0/0/0	0/0/0/0
5	SO4	A	320	-	-	0/0/0/0	0/0/0/0
5	SO4	A	321	-	-	0/0/0/0	0/0/0/0

All (1) bond length outliers are listed below:

Mol	Chain	Res	Type	Atoms	Z	Observed(Å)	Ideal(Å)
3	A	315	MAN	O5-C1	-2.14	1.40	1.43

All (38) bond angle outliers are listed below:

Mol	Chain	Res	Type	Atoms	Z	Observed(°)	Ideal(°)
2	A	302	NAG	O5-C1-C2	-4.98	104.64	111.52
3	A	314	MAN	C2-C3-C4	-3.91	104.08	110.87
3	A	313	MAN	O2-C2-C1	-3.08	102.97	109.17
3	A	316	MAN	O5-C1-C2	-2.98	106.13	110.78
2	A	301[B]	NAG	O5-C1-C2	-2.77	107.70	111.52
2	A	301[A]	NAG	O5-C1-C2	-2.77	107.70	111.52
3	A	310	MAN	C6-C5-C4	-2.71	106.58	112.99
2	A	302	NAG	C1-C2-N2	-2.60	106.05	110.49
3	A	311	MAN	C3-C4-C5	-2.39	105.96	110.24
3	A	317	MAN	O5-C5-C6	-2.36	103.41	107.15
3	A	305	MAN	O2-C2-C1	-2.25	104.65	109.17
3	A	304	MAN	O4-C4-C3	-2.21	105.19	110.34
3	A	310	MAN	O4-C4-C5	-2.18	103.83	109.31
3	A	305	MAN	C6-C5-C4	-2.12	107.97	112.99
3	A	312	MAN	O3-C3-C2	-2.12	106.09	110.04
3	A	315	MAN	O4-C4-C5	-2.11	104.02	109.31
3	A	312	MAN	O5-C1-C2	-2.07	107.55	110.78
3	A	315	MAN	C6-C5-C4	-2.04	108.17	112.99
3	A	310	MAN	C1-C2-C3	-2.01	107.12	109.66
3	A	308	MAN	O5-C5-C6	2.00	110.32	107.15
3	A	307	MAN	C1-O5-C5	2.04	115.00	112.19
3	A	305	MAN	O5-C5-C6	2.11	110.49	107.15
3	A	303	MAN	O5-C5-C6	2.14	110.54	107.15
3	A	313	MAN	O4-C4-C5	2.18	114.78	109.31
3	A	310	MAN	O3-C3-C2	2.23	114.18	110.04
3	A	316	MAN	O5-C5-C6	2.50	111.11	107.15
3	A	313	MAN	O3-C3-C2	2.54	114.77	110.04
3	A	314	MAN	C3-C4-C5	2.59	114.87	110.24

Continued on next page...

Continued from previous page...

Mol	Chain	Res	Type	Atoms	Z	Observed(°)	Ideal(°)
3	A	310	MAN	C1-O5-C5	2.61	115.77	112.19
3	A	311	MAN	C1-O5-C5	2.93	116.21	112.19
3	A	303	MAN	C1-O5-C5	3.01	116.33	112.19
3	A	305	MAN	C1-O5-C5	3.30	116.73	112.19
3	A	309	MAN	C1-O5-C5	3.36	116.81	112.19
3	A	315	MAN	C1-O5-C5	3.41	116.87	112.19
3	A	312	MAN	C1-O5-C5	3.76	117.36	112.19
2	A	302	NAG	C1-O5-C5	4.05	117.76	112.19
2	A	301[B]	NAG	C1-O5-C5	4.08	117.81	112.19
2	A	301[A]	NAG	C1-O5-C5	4.08	117.81	112.19

There are no chirality outliers.

There are no torsion outliers.

There are no ring outliers.

1 monomer is involved in 1 short contact:

Mol	Chain	Res	Type	Clashes	Symm-Clashes
5	A	320	SO4	1	0

5.7 Other polymers [i](#)

There are no such residues in this entry.

5.8 Polymer linkage issues [i](#)

There are no chain breaks in this entry.

6 Fit of model and data [i](#)

6.1 Protein, DNA and RNA chains [i](#)

In the following table, the column labelled ‘#RSRZ> 2’ contains the number (and percentage) of RSRZ outliers, followed by percent RSRZ outliers for the chain as percentile scores relative to all X-ray entries and entries of similar resolution. The OWAB column contains the minimum, median, 95th percentile and maximum values of the occupancy-weighted average B-factor per residue. The column labelled ‘Q< 0.9’ lists the number of (and percentage) of residues with an average occupancy less than 0.9.

Mol	Chain	Analysed	<RSRZ>	#RSRZ>2	OWAB(Å ²)	Q<0.9
1	A	247/248 (99%)	0.11	0 100 100	4, 7, 15, 20	0

There are no RSRZ outliers to report.

6.2 Non-standard residues in protein, DNA, RNA chains [i](#)

In the following table, the Atoms column lists the number of modelled atoms in the group and the number defined in the chemical component dictionary. The B-factors column lists the minimum, median, 95th percentile and maximum values of B factors of atoms in the group. The column labelled ‘Q< 0.9’ lists the number of atoms with occupancy less than 0.9.

Mol	Type	Chain	Res	Atoms	RSCC	RSR	B-factors(Å ²)	Q<0.9
1	HIC	A	1	11/12	0.92	0.12	7,8,9,9	0

6.3 Carbohydrates [i](#)

There are no carbohydrates in this entry.

6.4 Ligands [i](#)

In the following table, the Atoms column lists the number of modelled atoms in the group and the number defined in the chemical component dictionary. The B-factors column lists the minimum, median, 95th percentile and maximum values of B factors of atoms in the group. The column labelled ‘Q< 0.9’ lists the number of atoms with occupancy less than 0.9.

Mol	Type	Chain	Res	Atoms	RSCC	RSR	B-factors(Å ²)	Q<0.9
5	SO4	A	319	5/5	0.55	0.31	35,38,41,41	5
3	MAN	A	303	11/12	0.60	0.27	14,16,18,19	11
3	MAN	A	306	11/12	0.65	0.25	13,14,15,16	11

Continued on next page...

Continued from previous page...

Mol	Type	Chain	Res	Atoms	RSCC	RSR	B-factors(Å ²)	Q<0.9
3	MAN	A	305	11/12	0.66	0.33	18,19,22,23	11
3	MAN	A	315	11/12	0.68	0.27	22,24,26,28	11
3	MAN	A	316	11/12	0.69	0.21	16,17,19,19	11
3	MAN	A	307	11/12	0.72	0.25	19,20,20,22	11
3	MAN	A	310	11/12	0.76	0.20	15,16,21,24	0
5	SO4	A	321	5/5	0.77	0.33	57,62,65,66	0
5	SO4	A	320	5/5	0.81	0.22	37,39,42,45	5
2	NAG	A	301[B]	14/15	0.81	0.18	14,15,16,17	1
2	NAG	A	301[A]	14/15	0.81	0.18	13,15,16,17	1
3	MAN	A	314	11/12	0.83	0.15	15,16,18,18	0
3	MAN	A	313	11/12	0.85	0.16	13,14,18,20	0
3	MAN	A	309	11/12	0.86	0.18	8,9,10,11	11
3	MAN	A	304	11/12	0.87	0.16	7,7,8,8	11
2	NAG	A	302	14/15	0.87	0.15	6,6,7,7	14
3	MAN	A	308	11/12	0.89	0.15	11,14,16,18	0
3	MAN	A	311	11/12	0.91	0.12	5,6,6,7	0
3	MAN	A	312	11/12	0.91	0.12	6,7,7,7	0
3	MAN	A	317	11/12	0.91	0.11	6,7,8,9	0
4	CU	A	318	1/1	1.00	0.02	10,10,10,10	1

6.5 Other polymers [\(i\)](#)

There are no such residues in this entry.