



Full wwPDB X-ray Structure Validation Report ⓘ

Aug 29, 2020 – 09:56 PM BST

PDB ID : 6O5E
Title : Crystal structure of the Vitronectin hemopexin-like domain
Authors : Lechtenberg, B.C.; Shin, K.; Marassi, F.M.
Deposited on : 2019-03-01
Resolution : 1.90 Å(reported)

This is a Full wwPDB X-ray Structure Validation Report for a publicly released PDB entry.

We welcome your comments at validation@mail.wwpdb.org

A user guide is available at

<https://www.wwpdb.org/validation/2017/XrayValidationReportHelp>

with specific help available everywhere you see the ⓘ symbol.

The following versions of software and data (see [references ⓘ](#)) were used in the production of this report:

MolProbity : 4.02b-467
Mogul : 1.8.5 (274361), CSD as541be (2020)
Xtriage (Phenix) : 1.13
EDS : 2.13
Percentile statistics : 20191225.v01 (using entries in the PDB archive December 25th 2019)
Refmac : 5.8.0158
CCP4 : 7.0.044 (Gargrove)
Ideal geometry (proteins) : Engh & Huber (2001)
Ideal geometry (DNA, RNA) : Parkinson et al. (1996)
Validation Pipeline (wwPDB-VP) : 2.13

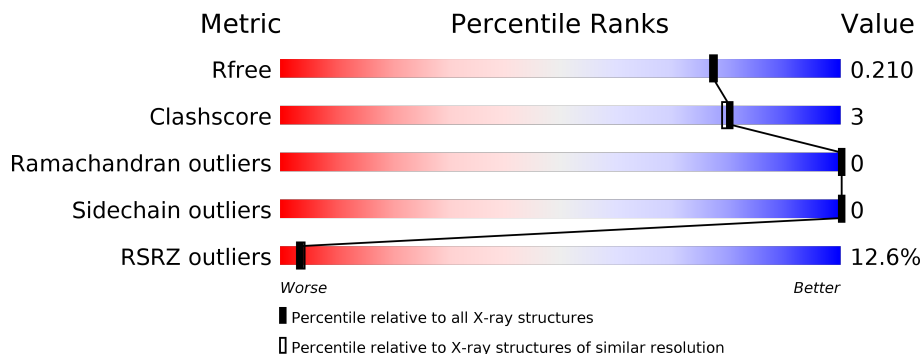
1 Overall quality at a glance i

The following experimental techniques were used to determine the structure:

X-RAY DIFFRACTION

The reported resolution of this entry is 1.90 Å.

Percentile scores (ranging between 0-100) for global validation metrics of the entry are shown in the following graphic. The table shows the number of entries on which the scores are based.



Metric	Whole archive (#Entries)	Similar resolution (#Entries, resolution range(Å))
R_{free}	130704	6207 (1.90-1.90)
Clashscore	141614	6847 (1.90-1.90)
Ramachandran outliers	138981	6760 (1.90-1.90)
Sidechain outliers	138945	6760 (1.90-1.90)
RSRZ outliers	127900	6082 (1.90-1.90)

The table below summarises the geometric issues observed across the polymeric chains and their fit to the electron density. The red, orange, yellow and green segments on the lower bar indicate the fraction of residues that contain outliers for ≥ 3 , 2, 1 and 0 types of geometric quality criteria respectively. A grey segment represents the fraction of residues that are not modelled. The numeric value for each fraction is indicated below the corresponding segment, with a dot representing fractions $\leq 5\%$. The upper red bar (where present) indicates the fraction of residues that have poor fit to the electron density. The numeric value is given above the bar.

Mol	Chain	Length	Quality of chain
1	A	204	
1	B	204	

The following table lists non-polymeric compounds, carbohydrate monomers and non-standard residues in protein, DNA, RNA chains that are outliers for geometric or electron-density-fit criteria:

Mol	Type	Chain	Res	Chirality	Geometry	Clashes	Electron density
6	NO3	B	506	-	-	-	X

2 Entry composition [i](#)

There are 7 unique types of molecules in this entry. The entry contains 6060 atoms, of which 2850 are hydrogens and 0 are deuteriums.

In the tables below, the ZeroOcc column contains the number of atoms modelled with zero occupancy, the AltConf column contains the number of residues with at least one atom in alternate conformation and the Trace column contains the number of residues modelled with at most 2 atoms.

- Molecule 1 is a protein called Vitronectin.

Mol	Chain	Residues	Atoms						ZeroOcc	AltConf	Trace
			Total	C	H	N	O	S			
1	A	189	3035	1009	1476	265	281	4	0	1	0
1	B	177	2822	945	1369	243	262	3	0	0	0

There are 6 discrepancies between the modelled and reference sequences:

Chain	Residue	Modelled	Actual	Comment	Reference
A	153	MET	-	initiating methionine	UNP P04004
A	180	SER	CYS	engineered mutation	UNP P04004
A	215	SER	CYS	engineered mutation	UNP P04004
B	153	MET	-	initiating methionine	UNP P04004
B	180	SER	CYS	engineered mutation	UNP P04004
B	215	SER	CYS	engineered mutation	UNP P04004

- Molecule 2 is SODIUM ION (three-letter code: NA) (formula: Na).

Mol	Chain	Residues	Atoms		ZeroOcc	AltConf
2	B	2	Total	Na	0	0
			2	2		
2	A	2	Total	Na	0	0
			2	2		

- Molecule 3 is CHLORIDE ION (three-letter code: CL) (formula: Cl).

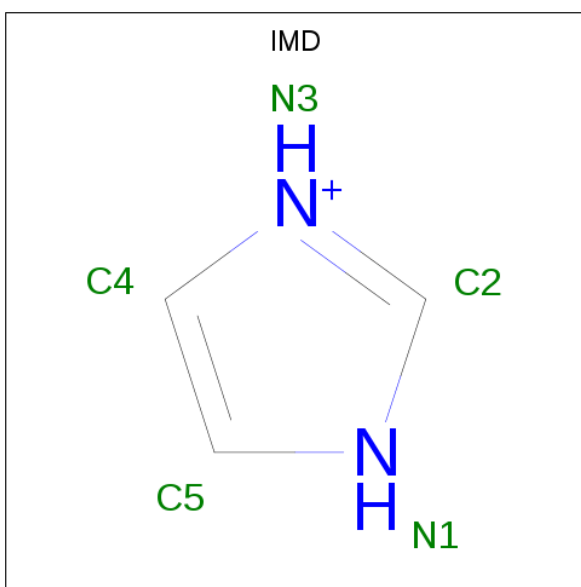
Mol	Chain	Residues	Atoms		ZeroOcc	AltConf
3	B	1	Total	Cl	0	0
			1	1		
3	A	1	Total	Cl	0	0
			1	1		

- Molecule 4 is SULFATE ION (three-letter code: SO4) (formula: O₄S).



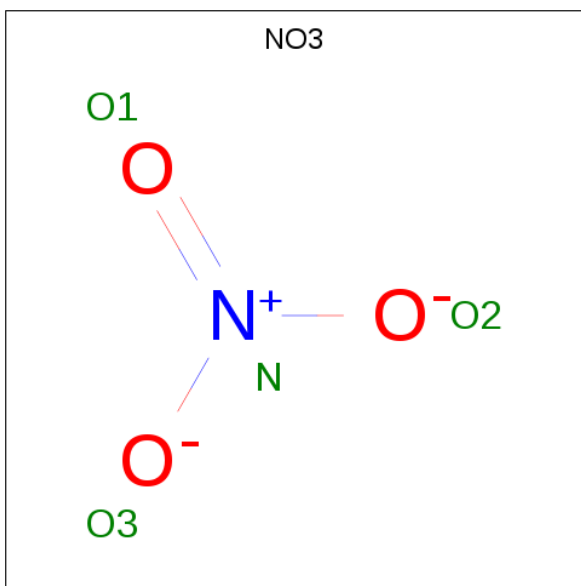
Mol	Chain	Residues	Atoms			ZeroOcc	AltConf
4	A	1	Total	O	S	0	0
			5	4	1		
4	B	1	Total	O	S	0	0
			5	4	1		
4	B	1	Total	O	S	0	0
			5	4	1		

- Molecule 5 is IMIDAZOLE (three-letter code: IMD) (formula: C₃H₅N₂).



Mol	Chain	Residues	Atoms				ZeroOcc	AltConf
5	A	1	Total	C	H	N	0	0
			10	3	5	2		

- Molecule 6 is NITRATE ION (three-letter code: NO3) (formula: NO₃).



Mol	Chain	Residues	Atoms		ZeroOcc	AltConf
6	B	1	Total	N O	0	0
			4	1 3		


- Molecule 7 is water.

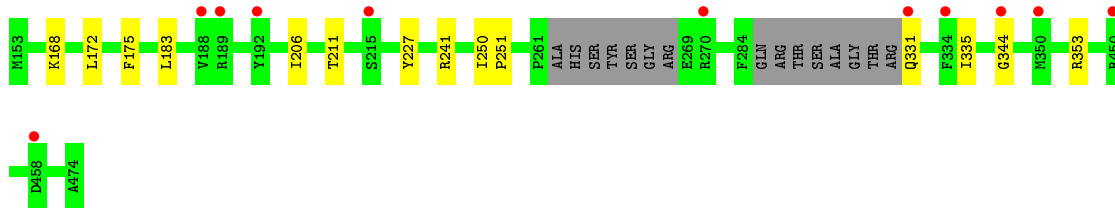
Mol	Chain	Residues	Atoms		ZeroOcc	AltConf
7	A	95	Total	O	0	0
			95	95		
7	B	73	Total	O	0	0
			73	73		

3 Residue-property plots [i](#)


These plots are drawn for all protein, RNA, DNA and oligosaccharide chains in the entry. The first graphic for a chain summarises the proportions of the various outlier classes displayed in the second graphic. The second graphic shows the sequence view annotated by issues in geometry and electron density. Residues are color-coded according to the number of geometric quality criteria for which they contain at least one outlier: green = 0, yellow = 1, orange = 2 and red = 3 or more. A red dot above a residue indicates a poor fit to the electron density ($RSRZ > 2$). Stretches of 2 or more consecutive residues without any outlier are shown as a green connector. Residues present in the sample, but not in the model, are shown in grey.

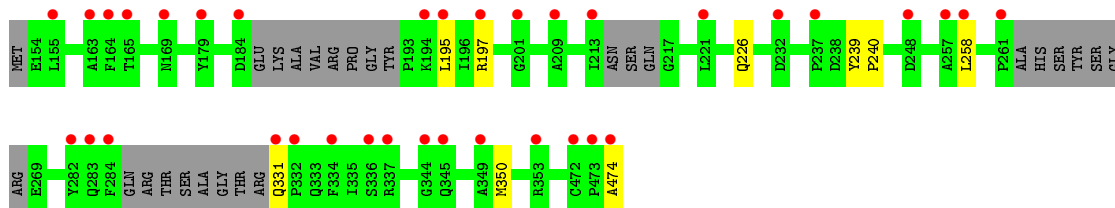
- Molecule 1: Vitronectin

Chain A: 



- Molecule 1: Vitronectin

Chain B: 



4 Data and refinement statistics

Property	Value	Source
Space group	P 1 21 1	Depositor
Cell constants a, b, c, α , β , γ	40.56 Å 97.36 Å 49.16 Å 90.00° 99.90° 90.00°	Depositor
Resolution (Å)	24.21 – 1.90 24.21 – 1.90	Depositor EDS
% Data completeness (in resolution range)	97.9 (24.21-1.90) 97.9 (24.21-1.90)	Depositor EDS
R_{merge}	0.07	Depositor
R_{sym}	(Not available)	Depositor
$\langle I/\sigma(I) \rangle$ ¹	1.96 (at 1.90 Å)	Xtrriage
Refinement program	PHENIX 1.14rc2-3191	Depositor
R, R_{free}	0.179 , 0.210 0.179 , 0.210	Depositor DCC
R_{free} test set	1472 reflections (5.08%)	wwPDB-VP
Wilson B-factor (Å ²)	27.0	Xtrriage
Anisotropy	0.429	Xtrriage
Bulk solvent k_{sol} (e/Å ³), B_{sol} (Å ²)	0.38 , 44.3	EDS
L-test for twinning ²	$\langle L \rangle = 0.49$, $\langle L^2 \rangle = 0.32$	Xtrriage
Estimated twinning fraction	No twinning to report.	Xtrriage
F_o, F_c correlation	0.96	EDS
Total number of atoms	6060	wwPDB-VP
Average B, all atoms (Å ²)	44.0	wwPDB-VP

Xtrriage's analysis on translational NCS is as follows: *The largest off-origin peak in the Patterson function is 5.74% of the height of the origin peak. No significant pseudotranslation is detected.*

¹Intensities estimated from amplitudes.

²Theoretical values of $\langle |L| \rangle$, $\langle L^2 \rangle$ for acentric reflections are 0.5, 0.333 respectively for untwinned datasets, and 0.375, 0.2 for perfectly twinned datasets.

5 Model quality [i](#)

5.1 Standard geometry [i](#)

Bond lengths and bond angles in the following residue types are not validated in this section: NA, SO4, NO3, IMD, CL

The Z score for a bond length (or angle) is the number of standard deviations the observed value is removed from the expected value. A bond length (or angle) with $|Z| > 5$ is considered an outlier worth inspection. RMSZ is the root-mean-square of all Z scores of the bond lengths (or angles).

Mol	Chain	Bond lengths		Bond angles	
		RMSZ	# Z >5	RMSZ	# Z >5
1	A	0.33	0/1609	0.55	0/2178
1	B	0.32	0/1499	0.52	0/2027
All	All	0.33	0/3108	0.53	0/4205

There are no bond length outliers.

There are no bond angle outliers.

There are no chirality outliers.

There are no planarity outliers.

5.2 Too-close contacts [i](#)

In the following table, the Non-H and H(model) columns list the number of non-hydrogen atoms and hydrogen atoms in the chain respectively. The H(added) column lists the number of hydrogen atoms added and optimized by MolProbity. The Clashes column lists the number of clashes within the asymmetric unit, whereas Symm-Clashes lists symmetry related clashes.

Mol	Chain	Non-H	H(model)	H(added)	Clashes	Symm-Clashes
1	A	1559	1476	1473	9	0
1	B	1453	1369	1367	8	0
2	A	2	0	0	0	0
2	B	2	0	0	0	0
3	A	1	0	0	0	0
3	B	1	0	0	0	0
4	A	5	0	0	0	0
4	B	10	0	0	1	0
5	A	5	5	5	0	0
6	B	4	0	0	0	0
7	A	95	0	0	0	0

Continued on next page...

Continued from previous page...

Mol	Chain	Non-H	H(model)	H(added)	Clashes	Symm-Clashes
7	B	73	0	0	1	0
All	All	3210	2850	2845	16	0

The all-atom clashscore is defined as the number of clashes found per 1000 atoms (including hydrogen atoms). The all-atom clashscore for this structure is 3.

All (16) close contacts within the same asymmetric unit are listed below, sorted by their clash magnitude.

Atom-1	Atom-2	Interatomic distance (Å)	Clash overlap (Å)
1:A:172:LEU:HD11	1:A:183:LEU:HD12	1.72	0.70
1:A:331:GLN:OE1	1:A:331:GLN:N	2.24	0.70
1:B:331:GLN:N	1:B:331:GLN:OE1	2.28	0.66
1:B:195:LEU:HD13	1:B:197:ARG:HH11	1.63	0.64
1:B:195:LEU:HD13	1:B:197:ARG:NH1	2.16	0.59
1:A:175:PHE:CD2	1:A:206:ILE:HD11	2.37	0.58
1:B:226:GLN:NE2	7:B:601:HOH:O	2.25	0.57
1:A:335:ILE:HD12	1:A:344:GLY:O	2.05	0.56
1:A:175:PHE:CG	1:A:206:ILE:HD11	2.42	0.54
1:A:227:TYR:OH	1:A:241[A]:ARG:NH1	2.42	0.54
1:A:353:ARG:NH1	1:B:474:ALA:OXT	2.43	0.52
1:B:350:MET:HG3	4:B:504:SO4:O3	2.12	0.50
1:B:239:TYR:HB3	1:B:240:PRO:HA	1.97	0.46
1:A:250:ILE:HG23	1:A:251:PRO:HD2	2.01	0.42
1:A:168:LYS:HD2	1:A:211:THR:HG21	2.01	0.42
1:B:258:LEU:C	1:B:258:LEU:HD12	2.40	0.41

There are no symmetry-related clashes.

5.3 Torsion angles [i](#)

5.3.1 Protein backbone [i](#)

In the following table, the Percentiles column shows the percent Ramachandran outliers of the chain as a percentile score with respect to all X-ray entries followed by that with respect to entries of similar resolution.

The Analysed column shows the number of residues for which the backbone conformation was analysed, and the total number of residues.

Mol	Chain	Analysed	Favoured	Allowed	Outliers	Percentiles	
1	A	184/204 (90%)	182 (99%)	2 (1%)	0	100	100
1	B	167/204 (82%)	164 (98%)	3 (2%)	0	100	100
All	All	351/408 (86%)	346 (99%)	5 (1%)	0	100	100

There are no Ramachandran outliers to report.

5.3.2 Protein sidechains [i](#)

In the following table, the Percentiles column shows the percent sidechain outliers of the chain as a percentile score with respect to all X-ray entries followed by that with respect to entries of similar resolution.

The Analysed column shows the number of residues for which the sidechain conformation was analysed, and the total number of residues.

Mol	Chain	Analysed	Rotameric	Outliers	Percentiles	
1	A	160/170 (94%)	160 (100%)	0	100	100
1	B	149/170 (88%)	149 (100%)	0	100	100
All	All	309/340 (91%)	309 (100%)	0	100	100

There are no protein residues with a non-rotameric sidechain to report.

Some sidechains can be flipped to improve hydrogen bonding and reduce clashes. There are no such sidechains identified.

5.3.3 RNA [i](#)

There are no RNA molecules in this entry.

5.4 Non-standard residues in protein, DNA, RNA chains [i](#)

There are no non-standard protein/DNA/RNA residues in this entry.

5.5 Carbohydrates [i](#)

There are no monosaccharides in this entry.

5.6 Ligand geometry [i](#)

Of 11 ligands modelled in this entry, 6 are monoatomic - leaving 5 for Mogul analysis.

In the following table, the Counts columns list the number of bonds (or angles) for which Mogul statistics could be retrieved, the number of bonds (or angles) that are observed in the model and the number of bonds (or angles) that are defined in the Chemical Component Dictionary. The Link column lists molecule types, if any, to which the group is linked. The Z score for a bond length (or angle) is the number of standard deviations the observed value is removed from the expected value. A bond length (or angle) with $|Z| > 2$ is considered an outlier worth inspection. RMSZ is the root-mean-square of all Z scores of the bond lengths (or angles).

Mol	Type	Chain	Res	Link	Bond lengths			Bond angles		
					Counts	RMSZ	# Z > 2	Counts	RMSZ	# Z > 2
4	SO4	A	504	-	4,4,4	0.14	0	6,6,6	0.31	0
6	NO3	B	506	-	1,3,3	0.64	0	0,3,3	0.00	-
4	SO4	B	505	-	4,4,4	0.14	0	6,6,6	0.07	0
5	IMD	A	505	-	3,5,5	0.42	0	4,5,5	0.57	0
4	SO4	B	504	2	4,4,4	0.18	0	6,6,6	0.30	0

In the following table, the Chirals column lists the number of chiral outliers, the number of chiral centers analysed, the number of these observed in the model and the number defined in the Chemical Component Dictionary. Similar counts are reported in the Torsion and Rings columns. '-' means no outliers of that kind were identified.

Mol	Type	Chain	Res	Link	Chirals	Torsions	Rings
5	IMD	A	505	-	-	-	0/1/1/1

There are no bond length outliers.

There are no bond angle outliers.

There are no chirality outliers.

There are no torsion outliers.

There are no ring outliers.

1 monomer is involved in 1 short contact:

Mol	Chain	Res	Type	Clashes	Symm-Clashes
4	B	504	SO4	1	0

5.7 Other polymers [i](#)

There are no such residues in this entry.

5.8 Polymer linkage issues

There are no chain breaks in this entry.

6 Fit of model and data

6.1 Protein, DNA and RNA chains

In the following table, the column labelled ‘#RSRZ> 2’ contains the number (and percentage) of RSRZ outliers, followed by percent RSRZ outliers for the chain as percentile scores relative to all X-ray entries and entries of similar resolution. The OWAB column contains the minimum, median, 95th percentile and maximum values of the occupancy-weighted average B-factor per residue. The column labelled ‘Q< 0.9’ lists the number of (and percentage) of residues with an average occupancy less than 0.9.

Mol	Chain	Analysed	<RSRZ>	#RSRZ>2	OWAB(Å ²)	Q<0.9
1	A	189/204 (92%)	0.49	11 (5%) 23 25	18, 32, 60, 101	0
1	B	177/204 (86%)	0.93	35 (19%) 1 1	22, 40, 73, 111	0
All	All	366/408 (89%)	0.70	46 (12%) 3 4	18, 35, 68, 111	0

All (46) RSRZ outliers are listed below:

Mol	Chain	Res	Type	RSRZ
1	B	474	ALA	8.6
1	B	283	GLN	6.3
1	A	450	ARG	5.0
1	B	334	PHE	4.9
1	B	332	PRO	4.8
1	A	270	ARG	4.3
1	A	188	VAL	4.2
1	A	215	SER	4.1
1	B	184	ASP	4.0
1	B	284	PHE	3.9
1	B	213	ILE	3.8
1	B	337	ARG	3.7
1	B	473	PRO	3.7
1	B	155	LEU	3.6
1	B	197	ARG	3.6
1	B	353	ARG	3.5
1	B	331	GLN	3.5
1	A	189	ARG	3.5
1	B	261	PRO	3.3
1	B	257	ALA	3.2
1	A	331	GLN	3.2
1	B	282	TYR	3.2
1	B	195	LEU	3.0
1	B	237	PRO	3.0

Continued on next page...

Continued from previous page...

Mol	Chain	Res	Type	RSRZ
1	B	164	PHE	2.9
1	A	344	GLY	2.9
1	A	458	ASP	2.9
1	B	163	ALA	2.8
1	B	248	ASP	2.6
1	B	165	THR	2.5
1	A	350	MET	2.4
1	B	345	GLN	2.4
1	B	232	ASP	2.3
1	B	472	CYS	2.3
1	B	349	ALA	2.3
1	B	336	SER	2.2
1	B	201	GLY	2.2
1	B	194	LYS	2.2
1	B	258	LEU	2.1
1	B	344	GLY	2.1
1	B	179	TYR	2.1
1	B	221	LEU	2.1
1	A	192	TYR	2.1
1	A	334	PHE	2.1
1	B	169	ASN	2.0
1	B	209	ALA	2.0

6.2 Non-standard residues in protein, DNA, RNA chains [i](#)

There are no non-standard protein/DNA/RNA residues in this entry.

6.3 Carbohydrates [i](#)

There are no monosaccharides in this entry.

6.4 Ligands [i](#)

In the following table, the Atoms column lists the number of modelled atoms in the group and the number defined in the chemical component dictionary. The B-factors column lists the minimum, median, 95th percentile and maximum values of B factors of atoms in the group. The column labelled 'Q< 0.9' lists the number of atoms with occupancy less than 0.9.

Mol	Type	Chain	Res	Atoms	RSCC	RSR	B-factors(Å ²)	Q<0.9
6	NO3	B	506	4/4	0.44	0.58	96,96,97,97	0

Continued on next page...

Continued from previous page...

Mol	Type	Chain	Res	Atoms	RSCC	RSR	B-factors(\AA^2)	Q<0.9
5	IMD	A	505	5/5	0.86	0.17	62,64,75,77	0
4	SO4	B	505	5/5	0.92	0.16	81,85,90,95	0
2	NA	A	503	1/1	0.96	0.14	16,16,16,16	0
2	NA	B	501	1/1	0.96	0.16	22,22,22,22	0
4	SO4	B	504	5/5	0.97	0.16	34,35,44,46	0
2	NA	B	503	1/1	0.98	0.19	22,22,22,22	0
4	SO4	A	504	5/5	0.98	0.09	26,28,31,33	0
2	NA	A	501	1/1	0.98	0.10	18,18,18,18	0
3	CL	B	502	1/1	0.99	0.24	22,22,22,22	0
3	CL	A	502	1/1	1.00	0.15	19,19,19,19	0

6.5 Other polymers [i](#)

There are no such residues in this entry.