



Full wwPDB X-ray Structure Validation Report ⓘ

Oct 27, 2018 – 11:42 PM EDT

PDB ID : 5O9U
Title : HsNMT1 in complex with CoA and Myristoylated-GCSVSKKK octapeptide
Authors : Dian, C.; Meinnel, T.; Giglione, C.
Deposited on : 2017-06-20
Resolution : 1.85 Å(reported)

This is a Full wwPDB X-ray Structure Validation Report for a publicly released PDB entry.

We welcome your comments at validation@mail.wwpdb.org

A user guide is available at

<https://www.wwpdb.org/validation/2017/XrayValidationReportHelp>

with specific help available everywhere you see the ⓘ symbol.

The following versions of software and data (see [references ⓘ](#)) were used in the production of this report:

MolProbity : 4.02b-467
Mogul : 1.7.3 (157068), CSD as539be (2018)
Xtriage (Phenix) : 1.13
EDS : rb-20031633
Percentile statistics : 20171227.v01 (using entries in the PDB archive December 27th 2017)
Refmac : 5.8.0158
CCP4 : 7.0 (Gargrove)
Ideal geometry (proteins) : Engh & Huber (2001)
Ideal geometry (DNA, RNA) : Parkinson et al. (1996)
Validation Pipeline (wwPDB-VP) : rb-20031633

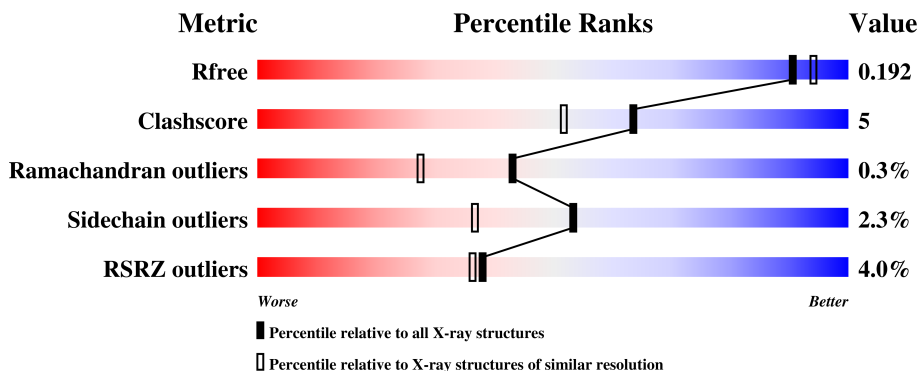
1 Overall quality at a glance

The following experimental techniques were used to determine the structure:

X-RAY DIFFRACTION

The reported resolution of this entry is 1.85 Å.

Percentile scores (ranging between 0-100) for global validation metrics of the entry are shown in the following graphic. The table shows the number of entries on which the scores are based.



Metric	Whole archive (#Entries)	Similar resolution (#Entries, resolution range(Å))
R_{free}	111664	2111 (1.86-1.86)
Clashscore	122126	2258 (1.86-1.86)
Ramachandran outliers	120053	2234 (1.86-1.86)
Sidechain outliers	120020	2234 (1.86-1.86)
RSRZ outliers	108989	2075 (1.86-1.86)

The table below summarises the geometric issues observed across the polymeric chains and their fit to the electron density. The red, orange, yellow and green segments on the lower bar indicate the fraction of residues that contain outliers for ≥ 3 , 2, 1 and 0 types of geometric quality criteria. A grey segment represents the fraction of residues that are not modelled. The numeric value for each fraction is indicated below the corresponding segment, with a dot representing fractions $\leq 5\%$. The upper red bar (where present) indicates the fraction of residues that have poor fit to the electron density. The numeric value is given above the bar.

Mol	Chain	Length	Quality of chain
1	A	402	
1	B	402	
2	C	8	
2	D	8	

2 Entry composition i

There are 6 unique types of molecules in this entry. The entry contains 7562 atoms, of which 0 are hydrogens and 0 are deuteriums.

In the tables below, the ZeroOcc column contains the number of atoms modelled with zero occupancy, the AltConf column contains the number of residues with at least one atom in alternate conformation and the Trace column contains the number of residues modelled with at most 2 atoms.

- Molecule 1 is a protein called Glycylpeptide N-tetradecanoyltransferase 1.

Mol	Chain	Residues	Atoms					ZeroOcc	AltConf	Trace
			Total	C	N	O	S			
1	A	393	3188	2063	536	572	17	0	3	0
1	B	393	3208	2077	541	573	17	0	3	0

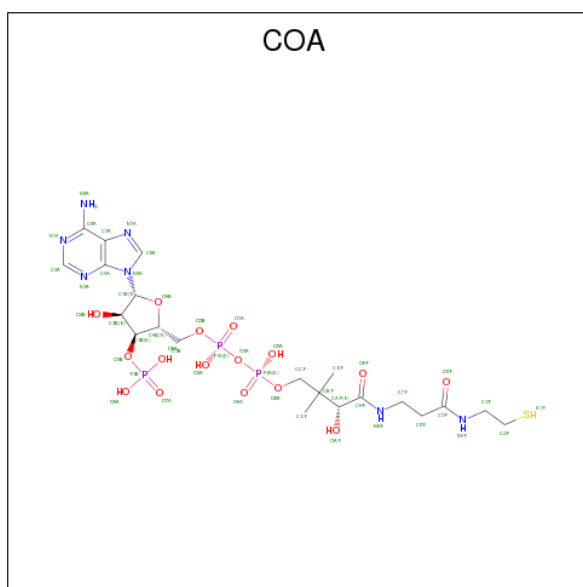
There are 8 discrepancies between the modelled and reference sequences:

Chain	Residue	Modelled	Actual	Comment	Reference
A	95	GLY	-	expression tag	UNP P30419
A	96	GLY	-	expression tag	UNP P30419
A	97	SER	-	expression tag	UNP P30419
A	98	GLU	-	expression tag	UNP P30419
B	95	GLY	-	expression tag	UNP P30419
B	96	GLY	-	expression tag	UNP P30419
B	97	SER	-	expression tag	UNP P30419
B	98	GLU	-	expression tag	UNP P30419

- Molecule 2 is a protein called Calcineurin B-like protein 4.

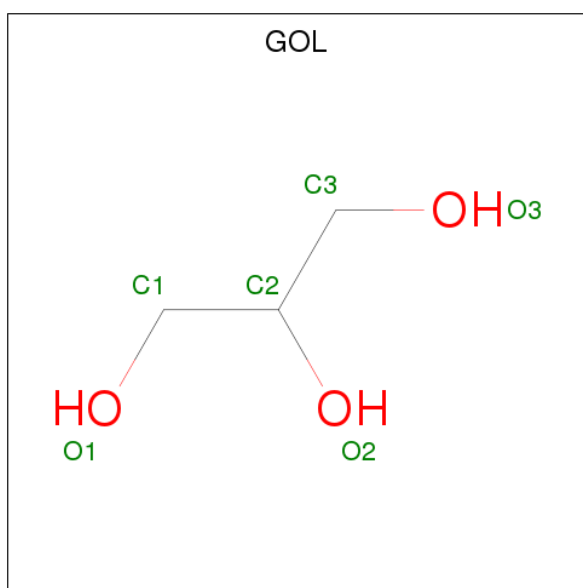
Mol	Chain	Residues	Atoms					ZeroOcc	AltConf	Trace
			Total	C	N	O	S			
2	C	8	57	34	11	11	1	0	0	0
2	D	8	53	31	10	11	1	0	0	0

- Molecule 3 is COENZYME A (three-letter code: COA) (formula: C₂₁H₃₆N₇O₁₆P₃S).



Mol	Chain	Residues	Atoms					ZeroOcc	AltConf	
			Total	C	N	O	P			S
3	A	1	48	21	7	16	3	1	0	0
3	B	1	48	21	7	16	3	1	0	0

- Molecule 4 is GLYCEROL (three-letter code: GOL) (formula: $C_3H_8O_3$).



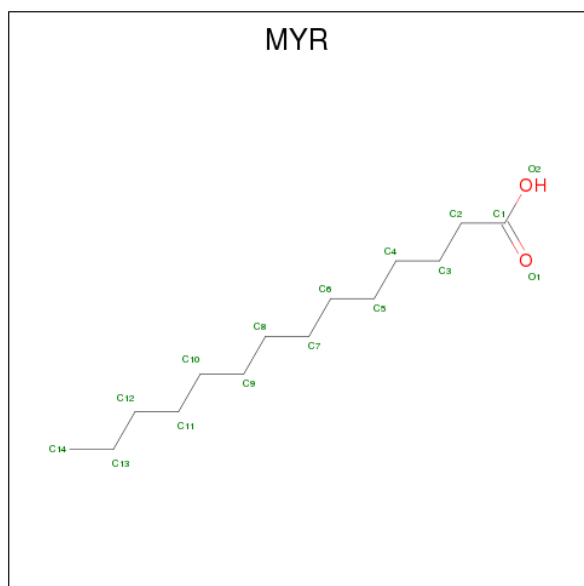
Mol	Chain	Residues	Atoms			ZeroOcc	AltConf
			Total	C	O		
4	A	1	6	3	3	0	0
4	B	1	6	3	3	0	0

Continued on next page...

Continued from previous page...

Mol	Chain	Residues	Atoms			ZeroOcc	AltConf
4	B	1	Total	C	O	0	0
			6	3	3		

- Molecule 5 is MYRISTIC ACID (three-letter code: MYR) (formula: $C_{14}H_{28}O_2$).



Mol	Chain	Residues	Atoms			ZeroOcc	AltConf
5	C	1	Total	C	O	0	0
			15	14	1		
5	D	1	Total	C	O	0	0
			15	14	1		

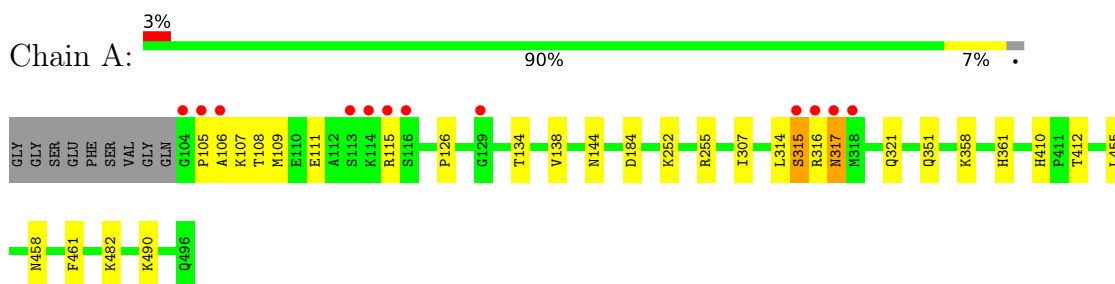
- Molecule 6 is water.

Mol	Chain	Residues	Atoms		ZeroOcc	AltConf
6	A	454	Total	O	0	0
			454	454		
6	B	446	Total	O	0	0
			446	446		
6	C	9	Total	O	0	0
			9	9		
6	D	3	Total	O	0	0
			3	3		

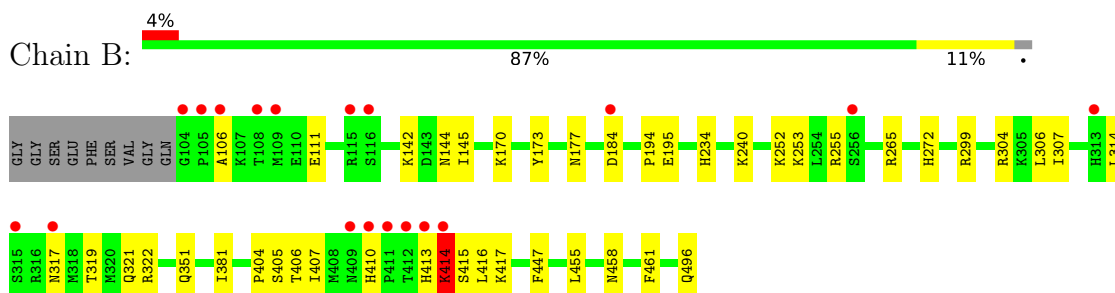
3 Residue-property plots [i](#)

These plots are drawn for all protein, RNA and DNA chains in the entry. The first graphic for a chain summarises the proportions of the various outlier classes displayed in the second graphic. The second graphic shows the sequence view annotated by issues in geometry and electron density. Residues are color-coded according to the number of geometric quality criteria for which they contain at least one outlier: green = 0, yellow = 1, orange = 2 and red = 3 or more. A red dot above a residue indicates a poor fit to the electron density ($RSRZ > 2$). Stretches of 2 or more consecutive residues without any outlier are shown as a green connector. Residues present in the sample, but not in the model, are shown in grey.

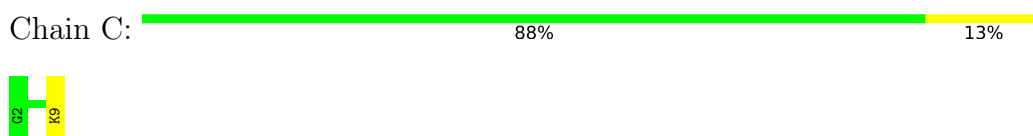
- Molecule 1: Glycylpeptide N-tetradecanoyltransferase 1



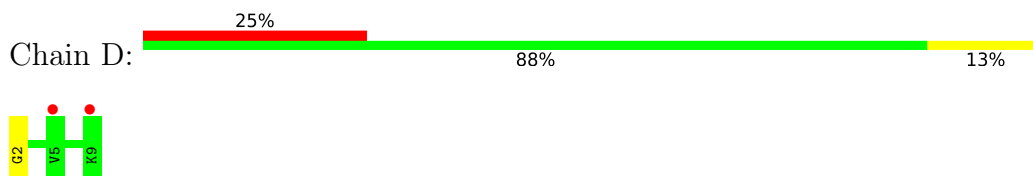
- Molecule 1: Glycylpeptide N-tetradecanoyltransferase 1



- Molecule 2: Calcineurin B-like protein 4



- Molecule 2: Calcineurin B-like protein 4



4 Data and refinement statistics

Property	Value	Source
Space group	P 2 21 21	Depositor
Cell constants a, b, c, α , β , γ	58.24Å 79.78Å 178.75Å 90.00° 90.00° 90.00°	Depositor
Resolution (Å)	47.04 – 1.85 47.04 – 1.85	Depositor EDS
% Data completeness (in resolution range)	99.2 (47.04-1.85) 99.2 (47.04-1.85)	Depositor EDS
R_{merge}	(Not available)	Depositor
R_{sym}	0.07	Depositor
$\langle I/\sigma(I) \rangle$ ¹	5.22 (at 1.86Å)	Xtrriage
Refinement program	PHENIX (1.10.1_2155: ???)	Depositor
R, R_{free}	0.155 , 0.192 0.155 , 0.192	Depositor DCC
R_{free} test set	3542 reflections (4.96%)	wwPDB-VP
Wilson B-factor (Å ²)	16.3	Xtrriage
Anisotropy	0.523	Xtrriage
Bulk solvent k_{sol} (e/Å ³), B_{sol} (Å ²)	0.34 , 49.6	EDS
L-test for twinning ²	$\langle L \rangle = 0.47$, $\langle L^2 \rangle = 0.30$	Xtrriage
Estimated twinning fraction	No twinning to report.	Xtrriage
F_o, F_c correlation	0.96	EDS
Total number of atoms	7562	wwPDB-VP
Average B, all atoms (Å ²)	21.0	wwPDB-VP

Xtrriage's analysis on translational NCS is as follows: *The analyses of the Patterson function reveals a significant off-origin peak that is 21.41 % of the origin peak, indicating pseudo-translational symmetry. The chance of finding a peak of this or larger height randomly in a structure without pseudo-translational symmetry is equal to 7.0616e-03.*

¹Intensities estimated from amplitudes.

²Theoretical values of $\langle |L| \rangle$, $\langle L^2 \rangle$ for acentric reflections are 0.5, 0.333 respectively for untwinned datasets, and 0.375, 0.2 for perfectly twinned datasets.

5 Model quality [i](#)

5.1 Standard geometry [i](#)

Bond lengths and bond angles in the following residue types are not validated in this section: COA, GOL, MYR

The Z score for a bond length (or angle) is the number of standard deviations the observed value is removed from the expected value. A bond length (or angle) with $|Z| > 5$ is considered an outlier worth inspection. RMSZ is the root-mean-square of all Z scores of the bond lengths (or angles).

Mol	Chain	Bond lengths		Bond angles	
		RMSZ	# Z >5	RMSZ	# Z >5
1	A	0.37	0/3278	0.53	0/4458
1	B	0.36	0/3300	0.54	0/4487
2	C	0.47	0/56	0.56	0/69
2	D	0.35	0/52	0.43	0/65
All	All	0.36	0/6686	0.54	0/9079

Chiral center outliers are detected by calculating the chiral volume of a chiral center and verifying if the center is modelled as a planar moiety or with the opposite hand. A planarity outlier is detected by checking planarity of atoms in a peptide group, atoms in a mainchain group or atoms of a sidechain that are expected to be planar.

Mol	Chain	#Chirality outliers	#Planarity outliers
1	B	0	2

There are no bond length outliers.

There are no bond angle outliers.

There are no chirality outliers.

All (2) planarity outliers are listed below:

Mol	Chain	Res	Type	Group
1	B	413	HIS	Peptide
1	B	414	LYS	Peptide

5.2 Too-close contacts [i](#)

In the following table, the Non-H and H(model) columns list the number of non-hydrogen atoms and hydrogen atoms in the chain respectively. The H(added) column lists the number of hydrogen atoms added and optimized by MolProbity. The Clashes column lists the number of clashes within the asymmetric unit, whereas Symm-Clashes lists symmetry related clashes.

Mol	Chain	Non-H	H(model)	H(added)	Clashes	Symm-Clashes
1	A	3188	0	3145	20	0
1	B	3208	0	3167	34	0
2	C	57	0	65	1	0
2	D	53	0	54	2	0
3	A	48	0	32	4	0
3	B	48	0	32	3	0
4	A	6	0	8	1	0
4	B	12	0	16	2	0
5	C	15	0	27	0	0
5	D	15	0	27	0	0
6	A	454	0	0	6	1
6	B	446	0	0	5	0
6	C	9	0	0	1	0
6	D	3	0	0	0	0
All	All	7562	0	6573	61	1

The all-atom clashscore is defined as the number of clashes found per 1000 atoms (including hydrogen atoms). The all-atom clashscore for this structure is 5.

All (61) close contacts within the same asymmetric unit are listed below, sorted by their clash magnitude.

Atom-1	Atom-2	Interatomic distance (Å)	Clash overlap (Å)
3:A:501:COA:C1B	3:A:501:COA:O4B	1.66	1.21
3:B:501:COA:C1B	3:B:501:COA:O4B	1.66	1.15
1:A:317:ASN:H	1:A:317:ASN:HD22	1.18	0.86
1:B:319:THR:HG23	1:B:322:ARG:H	1.42	0.85
1:B:414:LYS:HD3	1:B:415:SER:H	1.41	0.85
1:A:108:THR:HG23	1:A:111:GLU:H	1.53	0.74
3:A:501:COA:S1P	3:A:501:COA:N6A	2.61	0.72
1:B:240:LYS:NZ	6:B:602:HOH:O	2.19	0.71
1:A:321:GLN:O	6:A:601:HOH:O	2.13	0.67
1:A:144[B]:ASN:OD1	1:B:351:GLN:NE2	2.27	0.66
3:A:501:COA:O3A	6:A:602:HOH:O	2.13	0.66
1:A:315:SER:O	1:A:317:ASN:ND2	2.30	0.64
1:B:177[B]:ASN:OD1	6:B:601:HOH:O	2.14	0.64
1:B:173[B]:TYR:CD1	1:B:194:PRO:HG3	2.34	0.63
1:B:173[B]:TYR:CE1	1:B:194:PRO:HG3	2.35	0.60
1:B:406:THR:HG23	1:B:414:LYS:HG2	1.83	0.60
3:B:501:COA:HS1	2:D:2:GLY:N	1.99	0.59
1:B:404:PRO:HB2	1:B:415:SER:HB2	1.84	0.58
1:B:170:LYS:HA	1:B:173[B]:TYR:CE1	2.39	0.58
1:A:317:ASN:H	1:A:317:ASN:ND2	1.98	0.57

Continued on next page...

Continued from previous page...

Atom-1	Atom-2	Interatomic distance (Å)	Clash overlap (Å)
1:B:145:ILE:HD12	1:B:272:HIS:HB3	1.87	0.56
1:B:414:LYS:HD3	1:B:415:SER:N	2.17	0.56
1:B:307:ILE:HD13	1:B:314:LEU:HG	1.87	0.56
1:B:170:LYS:HA	1:B:173[B]:TYR:CD1	2.42	0.54
1:A:315:SER:O	1:A:317:ASN:N	2.39	0.54
1:B:252:LYS:HA	1:B:255:ARG:HG3	1.91	0.53
3:A:501:COA:H8A	6:A:812:HOH:O	2.07	0.53
1:A:307:ILE:HD13	1:A:314:LEU:HG	1.91	0.52
1:A:106:ALA:HB2	1:A:115:ARG:HE	1.75	0.51
1:A:458:ASN:HA	1:A:461:PHE:CE2	2.46	0.50
1:B:496:GLN:HE22	4:B:503:GOL:C3	2.24	0.50
1:B:407:ILE:H	1:B:414:LYS:HB3	1.75	0.50
1:B:319:THR:OG1	1:B:321:GLN:OE1	2.25	0.49
1:B:306:LEU:HD23	1:B:416:LEU:HD11	1.96	0.48
1:B:496:GLN:HE22	4:B:503:GOL:H32	1.78	0.48
1:A:105:PRO:O	1:A:115:ARG:NH2	2.47	0.48
1:B:142:LYS:HB2	1:B:145:ILE:HD11	1.95	0.48
3:B:501:COA:H22	2:D:2:GLY:HA3	1.95	0.47
1:B:170:LYS:HG3	1:B:173[B]:TYR:CZ	2.50	0.47
2:C:9:LYS:NZ	6:C:201:HOH:O	2.34	0.47
1:B:234:HIS:HD2	6:B:796:HOH:O	1.97	0.47
1:A:252:LYS:HA	1:A:255:ARG:HG3	1.98	0.46
1:B:322:ARG:NH1	6:B:618:HOH:O	2.49	0.46
1:A:138:VAL:HG22	1:A:482:LYS:HG3	1.97	0.45
1:B:319:THR:CG2	1:B:322:ARG:H	2.20	0.45
1:B:265:ARG:NH1	6:B:604:HOH:O	2.24	0.45
1:A:361:HIS:CD2	1:A:490:LYS:HE2	2.51	0.45
1:B:458:ASN:HA	1:B:461:PHE:CE2	2.51	0.45
1:A:317:ASN:N	1:A:317:ASN:HD22	1.97	0.43
1:A:351:GLN:NE2	6:A:626:HOH:O	2.51	0.43
1:B:106:ALA:HB1	1:B:111:GLU:HB3	2.01	0.43
1:B:407:ILE:HD11	1:B:416:LEU:HB2	2.00	0.43
1:A:184:ASP:OD1	6:A:603:HOH:O	2.21	0.42
1:B:405:SER:O	1:B:415:SER:HA	2.19	0.42
1:B:407:ILE:H	1:B:414:LYS:CB	2.33	0.42
1:B:417:LYS:HG2	1:B:447:PHE:CD1	2.55	0.42
1:A:126:PRO:HG2	4:A:502:GOL:H2	2.02	0.41
1:A:410:HIS:HD2	1:A:412:THR:H	1.68	0.41
1:B:195:GLU:HB3	1:B:381:ILE:HD11	2.02	0.41
1:A:490:LYS:NZ	6:A:616:HOH:O	2.42	0.41
1:B:416:LEU:HA	1:B:416:LEU:HD12	1.93	0.40

All (1) symmetry-related close contacts are listed below. The label for Atom-2 includes the symmetry operator and encoded unit-cell translations to be applied.

Atom-1	Atom-2	Interatomic distance (Å)	Clash overlap (Å)
6:A:922:HOH:O	6:A:1026:HOH:O[2_555]	2.11	0.09

5.3 Torsion angles [i](#)

5.3.1 Protein backbone [i](#)

In the following table, the Percentiles column shows the percent Ramachandran outliers of the chain as a percentile score with respect to all X-ray entries followed by that with respect to entries of similar resolution.

The Analysed column shows the number of residues for which the backbone conformation was analysed, and the total number of residues.

Mol	Chain	Analysed	Favoured	Allowed	Outliers	Percentiles	
1	A	394/402 (98%)	382 (97%)	11 (3%)	1 (0%)	43	27
1	B	394/402 (98%)	379 (96%)	14 (4%)	1 (0%)	43	27
2	C	6/8 (75%)	6 (100%)	0	0	100	100
2	D	6/8 (75%)	6 (100%)	0	0	100	100
All	All	800/820 (98%)	773 (97%)	25 (3%)	2 (0%)	43	27

All (2) Ramachandran outliers are listed below:

Mol	Chain	Res	Type
1	B	414	LYS
1	A	316	ARG

5.3.2 Protein sidechains [i](#)

In the following table, the Percentiles column shows the percent sidechain outliers of the chain as a percentile score with respect to all X-ray entries followed by that with respect to entries of similar resolution.

The Analysed column shows the number of residues for which the sidechain conformation was analysed, and the total number of residues.

Mol	Chain	Analysed	Rotameric	Outliers	Percentiles	
1	A	349/362 (96%)	342 (98%)	7 (2%)	58	43

Continued on next page...

Continued from previous page...

Mol	Chain	Analysed	Rotameric	Outliers	Percentiles	
1	B	351/362 (97%)	342 (97%)	9 (3%)	49	32
2	C	7/7 (100%)	7 (100%)	0	100	100
2	D	6/7 (86%)	6 (100%)	0	100	100
All	All	713/738 (97%)	697 (98%)	16 (2%)	53	38

All (16) residues with a non-rotameric sidechain are listed below:

Mol	Chain	Res	Type
1	A	107	LYS
1	A	109	MET
1	A	134	THR
1	A	315	SER
1	A	317	ASN
1	A	358	LYS
1	A	455	LEU
1	B	144	ASN
1	B	184	ASP
1	B	253	LYS
1	B	299	ARG
1	B	304	ARG
1	B	317	ASN
1	B	410	HIS
1	B	414	LYS
1	B	455	LEU

Some sidechains can be flipped to improve hydrogen bonding and reduce clashes. All (6) such sidechains are listed below:

Mol	Chain	Res	Type
1	A	317	ASN
1	A	351	GLN
1	A	380	ASN
1	B	351	GLN
1	B	380	ASN
1	B	413	HIS

5.3.3 RNA [i](#)

There are no RNA molecules in this entry.

5.4 Non-standard residues in protein, DNA, RNA chains [i](#)

There are no non-standard protein/DNA/RNA residues in this entry.

5.5 Carbohydrates [i](#)

There are no carbohydrates in this entry.

5.6 Ligand geometry [i](#)

7 ligands are modelled in this entry.

In the following table, the Counts columns list the number of bonds (or angles) for which Mogul statistics could be retrieved, the number of bonds (or angles) that are observed in the model and the number of bonds (or angles) that are defined in the Chemical Component Dictionary. The Link column lists molecule types, if any, to which the group is linked. The Z score for a bond length (or angle) is the number of standard deviations the observed value is removed from the expected value. A bond length (or angle) with $|Z| > 2$ is considered an outlier worth inspection. RMSZ is the root-mean-square of all Z scores of the bond lengths (or angles).

Mol	Type	Chain	Res	Link	Bond lengths			Bond angles		
					Counts	RMSZ	# Z > 2	Counts	RMSZ	# Z > 2
3	COA	A	501	-	41,50,50	3.65	11 (26%)	51,75,75	2.08	9 (17%)
4	GOL	A	502	-	5,5,5	0.41	0	5,5,5	1.06	0
3	COA	B	501	-	41,50,50	3.69	12 (29%)	51,75,75	2.11	7 (13%)
4	GOL	B	502	-	5,5,5	0.47	0	5,5,5	0.28	0
4	GOL	B	503	-	5,5,5	0.23	0	5,5,5	0.92	0
5	MYR	C	101	2	14,14,15	0.68	0	12,13,15	0.85	1 (8%)
5	MYR	D	101	2	14,14,15	0.62	0	12,13,15	0.84	1 (8%)

In the following table, the Chirals column lists the number of chiral outliers, the number of chiral centers analysed, the number of these observed in the model and the number defined in the Chemical Component Dictionary. Similar counts are reported in the Torsion and Rings columns. '2' means no outliers of that kind were identified.

Mol	Type	Chain	Res	Link	Chirals	Torsions	Rings
3	COA	A	501	-	-	0/44/64/64	0/3/3/3
4	GOL	A	502	-	-	0/4/4/4	0/0/0/0
3	COA	B	501	-	-	0/44/64/64	0/3/3/3
4	GOL	B	502	-	-	0/4/4/4	0/0/0/0
4	GOL	B	503	-	-	0/4/4/4	0/0/0/0
5	MYR	C	101	2	-	0/11/12/13	0/0/0/0
5	MYR	D	101	2	-	0/11/12/13	0/0/0/0

All (23) bond length outliers are listed below:

Mol	Chain	Res	Type	Atoms	Z	Observed(Å)	Ideal(Å)
3	B	501	COA	O4B-C4B	-6.27	1.31	1.45
3	A	501	COA	O4B-C4B	-6.03	1.31	1.45
3	A	501	COA	O3B-C3B	-2.88	1.33	1.44
3	B	501	COA	O3B-C3B	-2.52	1.34	1.44
3	B	501	COA	O9P-C9P	-2.00	1.19	1.23
3	A	501	COA	C2A-N1A	2.03	1.37	1.33
3	B	501	COA	C2A-N1A	2.09	1.37	1.33
3	A	501	COA	C3B-C4B	2.12	1.58	1.52
3	A	501	COA	P2A-O6A	2.25	1.68	1.59
3	B	501	COA	C3B-C4B	2.28	1.59	1.52
3	B	501	COA	P2A-O6A	2.29	1.68	1.59
3	B	501	COA	C2A-N3A	2.79	1.36	1.32
3	A	501	COA	C2A-N3A	2.92	1.36	1.32
3	A	501	COA	P3B-O3B	3.80	1.66	1.59
3	A	501	COA	C6A-N6A	4.16	1.51	1.34
3	B	501	COA	C6A-N6A	4.26	1.51	1.34
3	B	501	COA	P3B-O3B	4.58	1.68	1.59
3	B	501	COA	C5P-N4P	6.60	1.48	1.33
3	A	501	COA	C5P-N4P	6.71	1.48	1.33
3	A	501	COA	C9P-N8P	7.16	1.48	1.33
3	B	501	COA	C9P-N8P	7.52	1.48	1.33
3	B	501	COA	O4B-C1B	17.81	1.66	1.41
3	A	501	COA	O4B-C1B	17.90	1.66	1.41

All (18) bond angle outliers are listed below:

Mol	Chain	Res	Type	Atoms	Z	Observed(°)	Ideal(°)
3	B	501	COA	N3A-C2A-N1A	-9.88	120.40	128.86
3	A	501	COA	N3A-C2A-N1A	-9.88	120.40	128.86
3	B	501	COA	N6A-C6A-N1A	-5.73	106.68	118.57
3	A	501	COA	N6A-C6A-N1A	-5.34	107.49	118.57
3	A	501	COA	C4B-O4B-C1B	-4.40	105.24	109.83
3	B	501	COA	C4B-O4B-C1B	-3.72	105.95	109.83
3	B	501	COA	P2A-O3A-P1A	-3.59	120.57	132.63
3	A	501	COA	P2A-O3A-P1A	-2.75	123.40	132.63
3	A	501	COA	O6A-CCP-CBP	-2.49	106.54	110.55
3	B	501	COA	O6A-CCP-CBP	-2.45	106.60	110.55
3	A	501	COA	C5B-C4B-C3B	-2.43	106.17	114.35
3	A	501	COA	C6P-C7P-N8P	-2.25	107.28	111.85
5	C	101	MYR	C4-C3-C2	-2.16	105.44	113.70
5	D	101	MYR	C4-C3-C2	-2.09	105.71	113.70
3	A	501	COA	CDP-CBP-CAP	2.04	112.35	108.82

Continued on next page...

Continued from previous page...

Mol	Chain	Res	Type	Atoms	Z	Observed(°)	Ideal(°)
3	B	501	COA	CDP-CBP-CAP	2.40	112.98	108.82
3	A	501	COA	C5A-C6A-N6A	5.59	131.86	120.47
3	B	501	COA	C5A-C6A-N6A	6.26	133.24	120.47

There are no chirality outliers.

There are no torsion outliers.

There are no ring outliers.

4 monomers are involved in 10 short contacts:

Mol	Chain	Res	Type	Clashes	Symm-Clashes
3	A	501	COA	4	0
4	A	502	GOL	1	0
3	B	501	COA	3	0
4	B	503	GOL	2	0

5.7 Other polymers [i](#)

There are no such residues in this entry.

5.8 Polymer linkage issues [i](#)

There are no chain breaks in this entry.

6 Fit of model and data

6.1 Protein, DNA and RNA chains

In the following table, the column labelled ‘#RSRZ > 2’ contains the number (and percentage) of RSRZ outliers, followed by percent RSRZ outliers for the chain as percentile scores relative to all X-ray entries and entries of similar resolution. The OWAB column contains the minimum, median, 95th percentile and maximum values of the occupancy-weighted average B-factor per residue. The column labelled ‘Q < 0.9’ lists the number of (and percentage) of residues with an average occupancy less than 0.9.

Mol	Chain	Analysed	<RSRZ>	#RSRZ>2	OWAB(Å ²)	Q<0.9
1	A	393/402 (97%)	-0.21	12 (3%) 49 47	8, 17, 42, 62	1 (0%)
1	B	393/402 (97%)	-0.11	18 (4%) 32 31	7, 17, 45, 68	3 (0%)
2	C	8/8 (100%)	-0.12	0 100 100	12, 16, 25, 41	0
2	D	8/8 (100%)	1.65	2 (25%) 0 0	24, 27, 40, 50	0
All	All	802/820 (97%)	-0.15	32 (3%) 38 36	7, 17, 44, 68	4 (0%)

All (32) RSRZ outliers are listed below:

Mol	Chain	Res	Type	RSRZ
1	B	104	GLY	8.4
1	B	413	HIS	5.8
1	B	410	HIS	5.1
1	A	105	PRO	4.5
1	B	411	PRO	4.5
2	D	9	LYS	4.0
1	A	116	SER	3.9
1	B	412	THR	3.9
1	B	105	PRO	3.6
1	B	409	ASN	3.5
1	B	106	ALA	3.2
1	A	104	GLY	3.2
1	B	256	SER	3.0
1	B	116	SER	2.8
1	B	315	SER	2.8
1	B	184	ASP	2.7
1	A	317	ASN	2.7
1	A	115	ARG	2.6
1	A	129	GLY	2.6
1	A	316	ARG	2.5
1	B	108	THR	2.5

Continued on next page...

Continued from previous page...

Mol	Chain	Res	Type	RSRZ
1	B	317	ASN	2.4
1	A	315	SER	2.4
1	A	114	LYS	2.3
1	A	318	MET	2.2
1	B	115	ARG	2.2
1	B	414	LYS	2.2
1	B	313[A]	HIS	2.1
1	A	106	ALA	2.1
2	D	5	VAL	2.1
1	B	109	MET	2.1
1	A	113	SER	2.1

6.2 Non-standard residues in protein, DNA, RNA chains [i](#)

There are no non-standard protein/DNA/RNA residues in this entry.

6.3 Carbohydrates [i](#)

There are no carbohydrates in this entry.

6.4 Ligands [i](#)

In the following table, the Atoms column lists the number of modelled atoms in the group and the number defined in the chemical component dictionary. The B-factors column lists the minimum, median, 95th percentile and maximum values of B factors of atoms in the group. The column labelled 'Q< 0.9' lists the number of atoms with occupancy less than 0.9.

Mol	Type	Chain	Res	Atoms	RSCC	RSR	B-factors(Å ²)	Q<0.9
4	GOL	B	503	6/6	0.87	0.18	23,30,30,38	0
3	COA	B	501	48/48	0.88	0.22	22,35,49,53	0
3	COA	A	501	48/48	0.89	0.19	18,39,50,57	0
5	MYR	D	101	15/16	0.94	0.10	5,9,19,21	0
5	MYR	C	101	15/16	0.96	0.11	7,10,15,22	0
4	GOL	A	502	6/6	0.97	0.09	14,21,24,25	0
4	GOL	B	502	6/6	0.97	0.07	12,15,20,24	0

6.5 Other polymers [i](#)

There are no such residues in this entry.