



Full wwPDB X-ray Structure Validation Report ⓘ

Sep 11, 2023 – 04:24 pm BST

PDB ID : 8OFS
Title : Human adenovirus type 30 fiber-knob protein complexed with sialic acid
Authors : Rizkallah, P.J.; Parker, A.L.; Mundy, R.M.; Baker, A.T.
Deposited on : 2023-03-16
Resolution : 2.56 Å(reported)

This is a Full wwPDB X-ray Structure Validation Report for a publicly released PDB entry.

We welcome your comments at validation@mail.wwpdb.org

A user guide is available at

<https://www.wwpdb.org/validation/2017/XrayValidationReportHelp>

with specific help available everywhere you see the ⓘ symbol.

The types of validation reports are described at

<http://www.wwpdb.org/validation/2017/FAQs#types>.

The following versions of software and data (see [references ⓘ](#)) were used in the production of this report:

MolProbity : 4.02b-467
Mogul : 1.8.4, CSD as541be (2020)
Xtriage (Phenix) : 1.13
EDS : 2.35
buster-report : 1.1.7 (2018)
Percentile statistics : 20191225.v01 (using entries in the PDB archive December 25th 2019)
Refmac : 5.8.0158
CCP4 : 7.0.044 (Gargrove)
Ideal geometry (proteins) : Engh & Huber (2001)
Ideal geometry (DNA, RNA) : Parkinson et al. (1996)
Validation Pipeline (wwPDB-VP) : 2.35

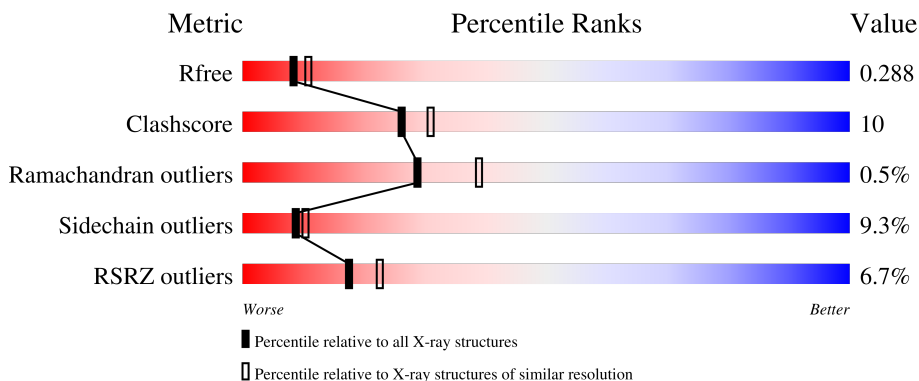
1 Overall quality at a glance

The following experimental techniques were used to determine the structure:

X-RAY DIFFRACTION


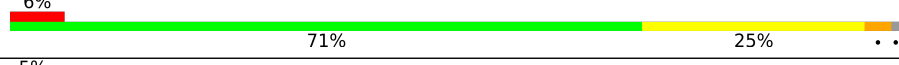

The reported resolution of this entry is 2.56 Å.

Percentile scores (ranging between 0-100) for global validation metrics of the entry are shown in the following graphic. The table shows the number of entries on which the scores are based.



Metric	Whole archive (#Entries)	Similar resolution (#Entries, resolution range(Å))
R_{free}	130704	1279 (2.58-2.54)
Clashscore	141614	1327 (2.58-2.54)
Ramachandran outliers	138981	1312 (2.58-2.54)
Sidechain outliers	138945	1312 (2.58-2.54)
RSRZ outliers	127900	1269 (2.58-2.54)

The table below summarises the geometric issues observed across the polymeric chains and their fit to the electron density. The red, orange, yellow and green segments of the lower bar indicate the fraction of residues that contain outliers for ≥ 3 , 2, 1 and 0 types of geometric quality criteria respectively. A grey segment represents the fraction of residues that are not modelled. The numeric value for each fraction is indicated below the corresponding segment, with a dot representing fractions $\leq 5\%$. The upper red bar (where present) indicates the fraction of residues that have poor fit to the electron density. The numeric value is given above the bar.

Mol	Chain	Length	Quality of chain
1	A	203	
1	B	203	
1	C	203	

2 Entry composition

There are 2 unique types of molecules in this entry. The entry contains 4701 atoms, of which 0 are hydrogens and 0 are deuteriums.

In the tables below, the ZeroOcc column contains the number of atoms modelled with zero occupancy, the AltConf column contains the number of residues with at least one atom in alternate conformation and the Trace column contains the number of residues modelled with at most 2 atoms.

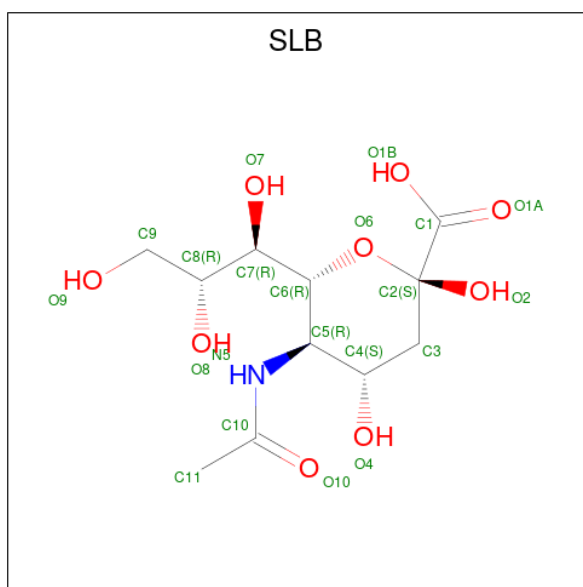
- Molecule 1 is a protein called Fiber.

Mol	Chain	Residues	Atoms					ZeroOcc	AltConf	Trace
			Total	C	N	O	S			
1	A	200	1543	979	247	313	4	0	0	0
1	B	201	1552	985	249	314	4	0	0	0
1	C	200	1543	979	247	313	4	0	0	0

There are 6 discrepancies between the modelled and reference sequences:

Chain	Residue	Modelled	Actual	Comment	Reference
A	185	LYS	ARG	conflict	UNP M0QTV3
A	186	LEU	ARG	conflict	UNP M0QTV3
B	185	LYS	ARG	conflict	UNP M0QTV3
B	186	LEU	ARG	conflict	UNP M0QTV3
C	185	LYS	ARG	conflict	UNP M0QTV3
C	186	LEU	ARG	conflict	UNP M0QTV3

- Molecule 2 is N-acetyl-beta-neuraminic acid (three-letter code: SLB) (formula: C₁₁H₁₉NO₉) (labeled as "Ligand of Interest" by depositor).

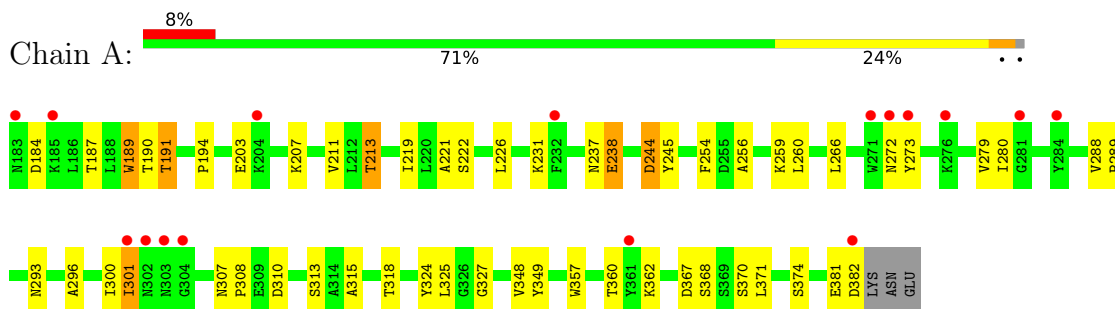


Mol	Chain	Residues	Atoms				ZeroOcc	AltConf
			Total	C	N	O		
2	A	1	Total	C	N	O	0	0
			21	11	1	9		
2	B	1	Total	C	N	O	0	0
			21	11	1	9		
2	C	1	Total	C	N	O	0	0
			21	11	1	9		

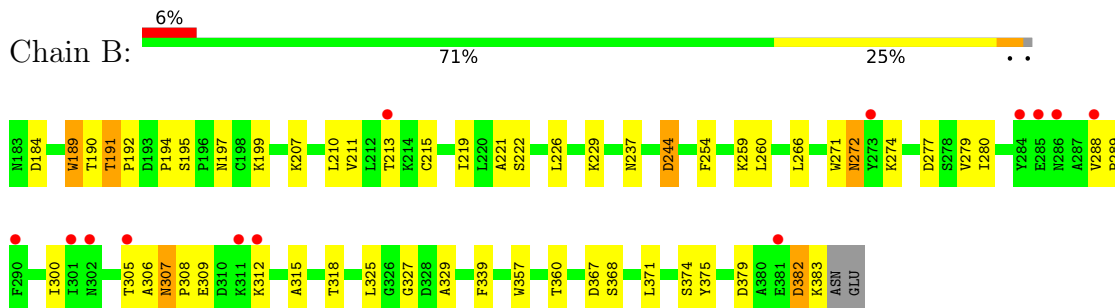
3 Residue-property plots [i](#)

These plots are drawn for all protein, RNA, DNA and oligosaccharide chains in the entry. The first graphic for a chain summarises the proportions of the various outlier classes displayed in the second graphic. The second graphic shows the sequence view annotated by issues in geometry and electron density. Residues are color-coded according to the number of geometric quality criteria for which they contain at least one outlier: green = 0, yellow = 1, orange = 2 and red = 3 or more. A red dot above a residue indicates a poor fit to the electron density ($RSRZ > 2$). Stretches of 2 or more consecutive residues without any outlier are shown as a green connector. Residues present in the sample, but not in the model, are shown in grey.

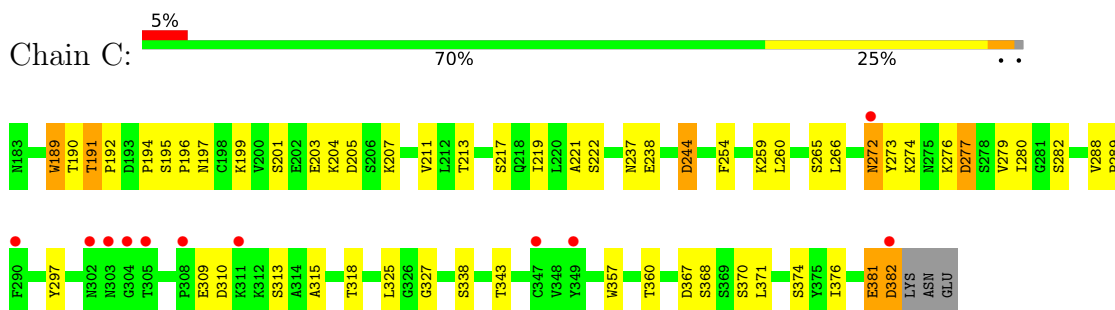
- Molecule 1: Fiber



- Molecule 1: Fiber



- Molecule 1: Fiber



4 Data and refinement statistics

Property	Value	Source
Space group	P 1 21 1	Depositor
Cell constants a, b, c, α , β , γ	62.13Å 62.49Å 71.80Å 90.00° 93.85° 90.00°	Depositor
Resolution (Å)	48.56 – 2.56 48.52 – 2.56	Depositor EDS
% Data completeness (in resolution range)	98.6 (48.56-2.56) 98.6 (48.52-2.56)	Depositor EDS
R_{merge}	0.06	Depositor
R_{sym}	(Not available)	Depositor
$\langle I/\sigma(I) \rangle$ ¹	1.96 (at 2.54Å)	Xtrriage
Refinement program	REFMAC 5.8.0267	Depositor
R, R_{free}	0.229 , 0.292 0.231 , 0.288	Depositor DCC
R_{free} test set	933 reflections (5.28%)	wwPDB-VP
Wilson B-factor (Å ²)	72.6	Xtrriage
Anisotropy	0.648	Xtrriage
Bulk solvent k_{sol} (e/Å ³), B_{sol} (Å ²)	0.26 , 87.6	EDS
L-test for twinning ²	$\langle L \rangle = 0.49$, $\langle L^2 \rangle = 0.32$	Xtrriage
Estimated twinning fraction	No twinning to report.	Xtrriage
F_o, F_c correlation	0.96	EDS
Total number of atoms	4701	wwPDB-VP
Average B, all atoms (Å ²)	140.0	wwPDB-VP

Xtrriage's analysis on translational NCS is as follows: *The largest off-origin peak in the Patterson function is 6.12% of the height of the origin peak. No significant pseudotranslation is detected.*

¹Intensities estimated from amplitudes.

²Theoretical values of $\langle |L| \rangle$, $\langle L^2 \rangle$ for acentric reflections are 0.5, 0.333 respectively for untwinned datasets, and 0.375, 0.2 for perfectly twinned datasets.

5 Model quality

5.1 Standard geometry

Bond lengths and bond angles in the following residue types are not validated in this section: SLB

The Z score for a bond length (or angle) is the number of standard deviations the observed value is removed from the expected value. A bond length (or angle) with $|Z| > 5$ is considered an outlier worth inspection. RMSZ is the root-mean-square of all Z scores of the bond lengths (or angles).

Mol	Chain	Bond lengths		Bond angles	
		RMSZ	# Z >5	RMSZ	# Z >5
1	A	0.68	0/1577	0.72	0/2145
1	B	0.68	0/1586	0.74	0/2156
1	C	0.66	0/1577	0.72	0/2145
All	All	0.67	0/4740	0.72	0/6446

Chiral center outliers are detected by calculating the chiral volume of a chiral center and verifying if the center is modelled as a planar moiety or with the opposite hand. A planarity outlier is detected by checking planarity of atoms in a peptide group, atoms in a mainchain group or atoms of a sidechain that are expected to be planar.

Mol	Chain	#Chirality outliers	#Planarity outliers
1	B	0	1
1	C	0	2
All	All	0	3

There are no bond length outliers.

There are no bond angle outliers.

There are no chirality outliers.

All (3) planarity outliers are listed below:

Mol	Chain	Res	Type	Group
1	B	312	LYS	Peptide
1	C	205	ASP	Peptide
1	C	381	GLU	Peptide

5.2 Too-close contacts [i](#)

In the following table, the Non-H and H(model) columns list the number of non-hydrogen atoms and hydrogen atoms in the chain respectively. The H(added) column lists the number of hydrogen atoms added and optimized by MolProbity. The Clashes column lists the number of clashes within the asymmetric unit, whereas Symm-Clashes lists symmetry-related clashes.

Mol	Chain	Non-H	H(model)	H(added)	Clashes	Symm-Clashes
1	A	1543	0	1510	35	0
1	B	1552	0	1523	38	1
1	C	1543	0	1510	31	1
2	A	21	0	18	2	0
2	B	21	0	18	2	0
2	C	21	0	18	1	0
All	All	4701	0	4597	97	1

The all-atom clashscore is defined as the number of clashes found per 1000 atoms (including hydrogen atoms). The all-atom clashscore for this structure is 10.

All (97) close contacts within the same asymmetric unit are listed below, sorted by their clash magnitude.

Atom-1	Atom-2	Interatomic distance (Å)	Clash overlap (Å)
1:B:260:LEU:HD23	1:B:271:TRP:CD1	1.99	0.97
1:B:260:LEU:HD12	1:B:260:LEU:O	1.69	0.93
1:C:272:ASN:HD22	1:C:280:ILE:HG23	1.39	0.85
1:A:307:ASN:OD1	1:A:308:PRO:HD2	1.81	0.80
1:A:207:LYS:NZ	1:C:309:GLU:O	2.13	0.79
1:A:187:THR:HG22	1:A:213:THR:HG22	1.64	0.79
1:B:260:LEU:HD23	1:B:271:TRP:HD1	1.56	0.71
1:C:194:PRO:O	1:C:207:LYS:HD3	1.94	0.67
1:B:382:ASP:OD1	1:C:276:LYS:NZ	2.28	0.67
1:A:348:VAL:HG13	1:A:349:TYR:CD2	2.30	0.67
1:B:189:TRP:CD1	1:B:190:THR:O	2.51	0.64
1:A:189:TRP:CD1	1:A:190:THR:O	2.51	0.64
1:C:189:TRP:CD1	1:C:190:THR:O	2.51	0.63
1:B:194:PRO:O	1:B:207:LYS:HD3	1.98	0.63
1:B:306:ALA:HB1	1:B:309:GLU:HG2	1.81	0.62
1:A:313:SER:HB2	1:B:226:LEU:HD22	1.82	0.62
1:C:381:GLU:O	1:C:382:ASP:HB2	2.01	0.61
1:A:194:PRO:O	1:A:207:LYS:HD3	2.00	0.61
1:B:272:ASN:HD22	1:B:280:ILE:HG22	1.65	0.61
1:A:256:ALA:HA	1:A:348:VAL:HG11	1.81	0.60
1:C:260:LEU:HD21	1:C:266:LEU:O	2.01	0.60

Continued on next page...

Continued from previous page...

Atom-1	Atom-2	Interatomic distance (Å)	Clash overlap (Å)
1:C:297:TYR:OH	1:C:376:ILE:HG22	2.01	0.60
1:A:219:ILE:O	1:A:374:SER:HA	2.03	0.58
1:B:219:ILE:O	1:B:374:SER:HA	2.04	0.58
1:C:189:TRP:CG	1:C:190:THR:O	2.57	0.58
1:A:226:LEU:HD22	1:C:313:SER:HB2	1.86	0.57
1:B:189:TRP:CG	1:B:190:THR:O	2.56	0.57
1:A:324:TYR:CZ	2:A:401:SLB:H113	2.39	0.57
1:C:219:ILE:O	1:C:374:SER:HA	2.05	0.57
1:A:273:TYR:HB2	1:A:280:ILE:HD12	1.86	0.56
1:B:300:ILE:H	1:B:300:ILE:HD12	1.70	0.56
1:A:238:GLU:HG3	1:A:362:LYS:HE2	1.86	0.56
1:A:189:TRP:CG	1:A:190:THR:O	2.58	0.56
1:B:190:THR:HG22	1:B:210:LEU:H	1.72	0.54
1:B:300:ILE:HD12	1:B:300:ILE:N	2.25	0.52
1:A:318:THR:HG21	1:B:327:GLY:CA	2.39	0.52
1:B:315:ALA:O	1:B:318:THR:HB	2.11	0.51
1:B:184:ASP:HB2	1:B:274:LYS:O	2.11	0.51
1:C:315:ALA:O	1:C:318:THR:HB	2.11	0.50
1:B:189:TRP:CZ2	1:B:274:LYS:HG3	2.45	0.50
1:A:307:ASN:OD1	1:A:308:PRO:CD	2.57	0.50
1:C:217:SER:O	1:C:376:ILE:HD12	2.12	0.50
1:A:315:ALA:O	1:A:318:THR:HB	2.11	0.50
1:B:244:ASP:OD1	1:B:244:ASP:N	2.45	0.49
1:B:307:ASN:HB3	1:B:308:PRO:HD3	1.94	0.49
1:A:325:LEU:HA	1:A:367:ASP:O	2.13	0.49
1:B:318:THR:HG21	1:C:327:GLY:CA	2.43	0.49
1:A:222:SER:HA	1:A:371:LEU:O	2.13	0.48
1:B:307:ASN:HB3	1:B:308:PRO:CD	2.44	0.48
1:C:297:TYR:CZ	1:C:376:ILE:HG22	2.48	0.48
1:A:237:ASN:HD21	1:A:357:TRP:HE1	1.62	0.48
1:A:244:ASP:OD1	1:A:244:ASP:N	2.46	0.48
1:C:222:SER:HA	1:C:371:LEU:O	2.14	0.48
1:B:325:LEU:HA	1:B:367:ASP:O	2.14	0.48
1:A:260:LEU:HD21	1:A:266:LEU:O	2.14	0.48
1:B:222:SER:HA	1:B:371:LEU:O	2.14	0.47
1:B:211:VAL:O	1:B:221:ALA:HA	2.15	0.47
1:A:300:ILE:C	1:A:301:ILE:HG13	2.35	0.47
1:A:318:THR:HG21	1:B:327:GLY:HA2	1.96	0.47
1:A:288:VAL:N	1:A:289:PRO:CD	2.78	0.47
1:C:211:VAL:O	1:C:221:ALA:HA	2.15	0.47
1:C:244:ASP:OD1	1:C:244:ASP:N	2.46	0.47

Continued on next page...

Continued from previous page...

Atom-1	Atom-2	Interatomic distance (Å)	Clash overlap (Å)
1:A:191:THR:HG23	1:A:194:PRO:HA	1.97	0.46
1:A:256:ALA:CA	1:A:348:VAL:HG11	2.43	0.46
1:B:237:ASN:HD21	1:B:357:TRP:HE1	1.63	0.46
1:C:237:ASN:HD21	1:C:357:TRP:HE1	1.64	0.45
1:B:192:PRO:HD2	1:B:277:ASP:O	2.17	0.45
1:B:288:VAL:N	1:B:289:PRO:CD	2.79	0.45
1:B:307:ASN:CB	1:B:308:PRO:CD	2.95	0.45
1:C:288:VAL:N	1:C:289:PRO:CD	2.78	0.45
1:B:307:ASN:CB	1:B:308:PRO:HD3	2.46	0.45
1:C:192:PRO:HD2	1:C:277:ASP:O	2.15	0.45
2:A:401:SLB:H7	2:A:401:SLB:C10	2.47	0.45
1:C:325:LEU:HA	1:C:367:ASP:O	2.16	0.45
1:B:197:ASN:O	1:B:266:LEU:HD12	2.18	0.44
1:C:191:THR:HG23	1:C:194:PRO:HA	1.99	0.44
1:A:211:VAL:O	1:A:221:ALA:HA	2.17	0.44
1:B:318:THR:HG21	1:C:327:GLY:HA2	1.98	0.44
1:A:184:ASP:HB2	1:A:280:ILE:HD11	1.99	0.44
1:C:273:TYR:O	1:C:280:ILE:HG22	2.17	0.43
1:B:254:PHE:HA	1:B:259:LYS:O	2.18	0.43
1:C:197:ASN:O	1:C:266:LEU:HD12	2.18	0.43
1:A:231:LYS:HE2	1:A:245:TYR:CD1	2.52	0.43
1:C:196:PRO:O	1:C:204:LYS:HD2	2.19	0.43
1:B:190:THR:HG23	1:B:191:THR:O	2.19	0.42
1:A:300:ILE:O	1:A:301:ILE:HG13	2.19	0.42
1:B:329:ALA:O	2:B:401:SLB:H4	2.19	0.42
1:B:191:THR:HG23	1:B:194:PRO:HA	2.02	0.42
1:C:254:PHE:HA	1:C:259:LYS:O	2.19	0.42
1:A:327:GLY:CA	1:C:318:THR:HG21	2.49	0.42
2:B:401:SLB:O9	2:B:401:SLB:H6	2.20	0.41
2:C:401:SLB:O4	2:C:401:SLB:H112	2.20	0.41
1:C:288:VAL:N	1:C:289:PRO:HD2	2.36	0.40
1:A:211:VAL:HG11	1:C:376:ILE:HD13	2.03	0.40
1:A:293:ASN:HB3	1:A:296:ALA:HB3	2.04	0.40
1:B:339:PHE:CZ	1:B:375:TYR:HB3	2.56	0.40
1:A:254:PHE:HA	1:A:259:LYS:O	2.21	0.40

All (1) symmetry-related close contacts are listed below. The label for Atom-2 includes the symmetry operator and encoded unit-cell translations to be applied.

Atom-1	Atom-2	Interatomic distance (Å)	Clash overlap (Å)
1:B:305:THR:OG1	1:C:343:THR:OG1[2_556]	2.16	0.04

5.3 Torsion angles [i](#)

5.3.1 Protein backbone [i](#)

In the following table, the Percentiles column shows the percent Ramachandran outliers of the chain as a percentile score with respect to all X-ray entries followed by that with respect to entries of similar resolution.

The Analysed column shows the number of residues for which the backbone conformation was analysed, and the total number of residues.

Mol	Chain	Analysed	Favoured	Allowed	Outliers	Percentiles	
1	A	198/203 (98%)	179 (90%)	17 (9%)	2 (1%)	15	21
1	B	199/203 (98%)	175 (88%)	23 (12%)	1 (0%)	29	39
1	C	198/203 (98%)	181 (91%)	17 (9%)	0	100	100
All	All	595/609 (98%)	535 (90%)	57 (10%)	3 (0%)	29	39

All (3) Ramachandran outliers are listed below:

Mol	Chain	Res	Type
1	A	381	GLU
1	A	301	ILE
1	B	307	ASN

5.3.2 Protein sidechains [i](#)

In the following table, the Percentiles column shows the percent sidechain outliers of the chain as a percentile score with respect to all X-ray entries followed by that with respect to entries of similar resolution.

The Analysed column shows the number of residues for which the sidechain conformation was analysed, and the total number of residues.

Mol	Chain	Analysed	Rotameric	Outliers	Percentiles	
1	A	176/179 (98%)	163 (93%)	13 (7%)	13	18
1	B	177/179 (99%)	162 (92%)	15 (8%)	10	13
1	C	176/179 (98%)	155 (88%)	21 (12%)	5	5
All	All	529/537 (98%)	480 (91%)	49 (9%)	9	10

All (49) residues with a non-rotameric sidechain are listed below:

Mol	Chain	Res	Type
1	A	189	TRP
1	A	191	THR
1	A	203	GLU
1	A	213	THR
1	A	238	GLU
1	A	244	ASP
1	A	272	ASN
1	A	279	VAL
1	A	310	ASP
1	A	360	THR
1	A	368	SER
1	A	370	SER
1	A	382	ASP
1	B	189	TRP
1	B	191	THR
1	B	195	SER
1	B	199	LYS
1	B	213	THR
1	B	215	CYS
1	B	229	LYS
1	B	244	ASP
1	B	272	ASN
1	B	279	VAL
1	B	360	THR
1	B	368	SER
1	B	379	ASP
1	B	382	ASP
1	B	383	LYS
1	C	189	TRP
1	C	191	THR
1	C	195	SER
1	C	199	LYS
1	C	201	SER
1	C	203	GLU
1	C	213	THR
1	C	238	GLU
1	C	244	ASP
1	C	265	SER
1	C	272	ASN
1	C	274	LYS
1	C	277	ASP
1	C	279	VAL
1	C	282	SER

Continued on next page...

Continued from previous page...

Mol	Chain	Res	Type
1	C	310	ASP
1	C	338	SER
1	C	360	THR
1	C	368	SER
1	C	370	SER
1	C	382	ASP

Sometimes sidechains can be flipped to improve hydrogen bonding and reduce clashes. All (20) such sidechains are listed below:

Mol	Chain	Res	Type
1	A	218	GLN
1	A	237	ASN
1	A	272	ASN
1	A	293	ASN
1	A	302	ASN
1	A	322	ASN
1	A	363	ASN
1	B	237	ASN
1	B	272	ASN
1	B	293	ASN
1	B	363	ASN
1	C	183	ASN
1	C	218	GLN
1	C	237	ASN
1	C	272	ASN
1	C	275	ASN
1	C	293	ASN
1	C	322	ASN
1	C	363	ASN
1	C	378	GLN

5.3.3 RNA [i](#)

There are no RNA molecules in this entry.

5.4 Non-standard residues in protein, DNA, RNA chains [i](#)

There are no non-standard protein/DNA/RNA residues in this entry.

5.5 Carbohydrates [i](#)

There are no monosaccharides in this entry.

5.6 Ligand geometry [i](#)

3 ligands are modelled in this entry.

In the following table, the Counts columns list the number of bonds (or angles) for which Mogul statistics could be retrieved, the number of bonds (or angles) that are observed in the model and the number of bonds (or angles) that are defined in the Chemical Component Dictionary. The Link column lists molecule types, if any, to which the group is linked. The Z score for a bond length (or angle) is the number of standard deviations the observed value is removed from the expected value. A bond length (or angle) with $|Z| > 2$ is considered an outlier worth inspection. RMSZ is the root-mean-square of all Z scores of the bond lengths (or angles).

Mol	Type	Chain	Res	Link	Bond lengths			Bond angles		
					Counts	RMSZ	# Z > 2	Counts	RMSZ	# Z > 2
2	SLB	A	401	-	21,21,21	0.79	1 (4%)	25,31,31	0.91	2 (8%)
2	SLB	B	401	-	21,21,21	0.95	3 (14%)	25,31,31	1.05	1 (4%)
2	SLB	C	401	-	21,21,21	0.87	2 (9%)	25,31,31	1.06	2 (8%)

In the following table, the Chirals column lists the number of chiral outliers, the number of chiral centers analysed, the number of these observed in the model and the number defined in the Chemical Component Dictionary. Similar counts are reported in the Torsion and Rings columns. '-' means no outliers of that kind were identified.

Mol	Type	Chain	Res	Link	Chirals	Torsions	Rings
2	SLB	A	401	-	-	10/20/38/38	0/1/1/1
2	SLB	B	401	-	-	5/20/38/38	0/1/1/1
2	SLB	C	401	-	-	3/20/38/38	0/1/1/1

All (6) bond length outliers are listed below:

Mol	Chain	Res	Type	Atoms	Z	Observed(Å)	Ideal(Å)
2	B	401	SLB	C8-C7	2.63	1.58	1.53
2	C	401	SLB	O1B-C1	-2.54	1.20	1.30
2	A	401	SLB	O1B-C1	-2.34	1.21	1.30
2	C	401	SLB	O6-C2	2.12	1.45	1.43
2	B	401	SLB	O6-C2	2.10	1.45	1.43
2	B	401	SLB	O1B-C1	-2.07	1.22	1.30

All (5) bond angle outliers are listed below:

Mol	Chain	Res	Type	Atoms	Z	Observed(°)	Ideal(°)
2	C	401	SLB	O6-C6-C5	-3.12	106.74	109.78
2	C	401	SLB	O1A-C1-C2	-2.81	119.33	123.59
2	B	401	SLB	C3-C2-C1	-2.69	107.98	113.00
2	A	401	SLB	O1A-C1-C2	-2.47	119.85	123.59
2	A	401	SLB	O6-C6-C5	-2.44	107.40	109.78

There are no chirality outliers.

All (18) torsion outliers are listed below:

Mol	Chain	Res	Type	Atoms
2	A	401	SLB	O1A-C1-C2-O2
2	A	401	SLB	O1B-C1-C2-O2
2	A	401	SLB	O1B-C1-C2-O6
2	A	401	SLB	C5-C6-C7-C8
2	A	401	SLB	C5-C6-C7-O7
2	A	401	SLB	O6-C6-C7-C8
2	A	401	SLB	O6-C6-C7-O7
2	A	401	SLB	C7-C8-C9-O9
2	B	401	SLB	O1B-C1-C2-O2
2	B	401	SLB	C5-C6-C7-C8
2	B	401	SLB	C5-C6-C7-O7
2	B	401	SLB	O6-C6-C7-C8
2	B	401	SLB	O6-C6-C7-O7
2	C	401	SLB	O1B-C1-C2-O2
2	C	401	SLB	C11-C10-N5-C5
2	C	401	SLB	O10-C10-N5-C5
2	A	401	SLB	O8-C8-C9-O9
2	A	401	SLB	O1A-C1-C2-O6

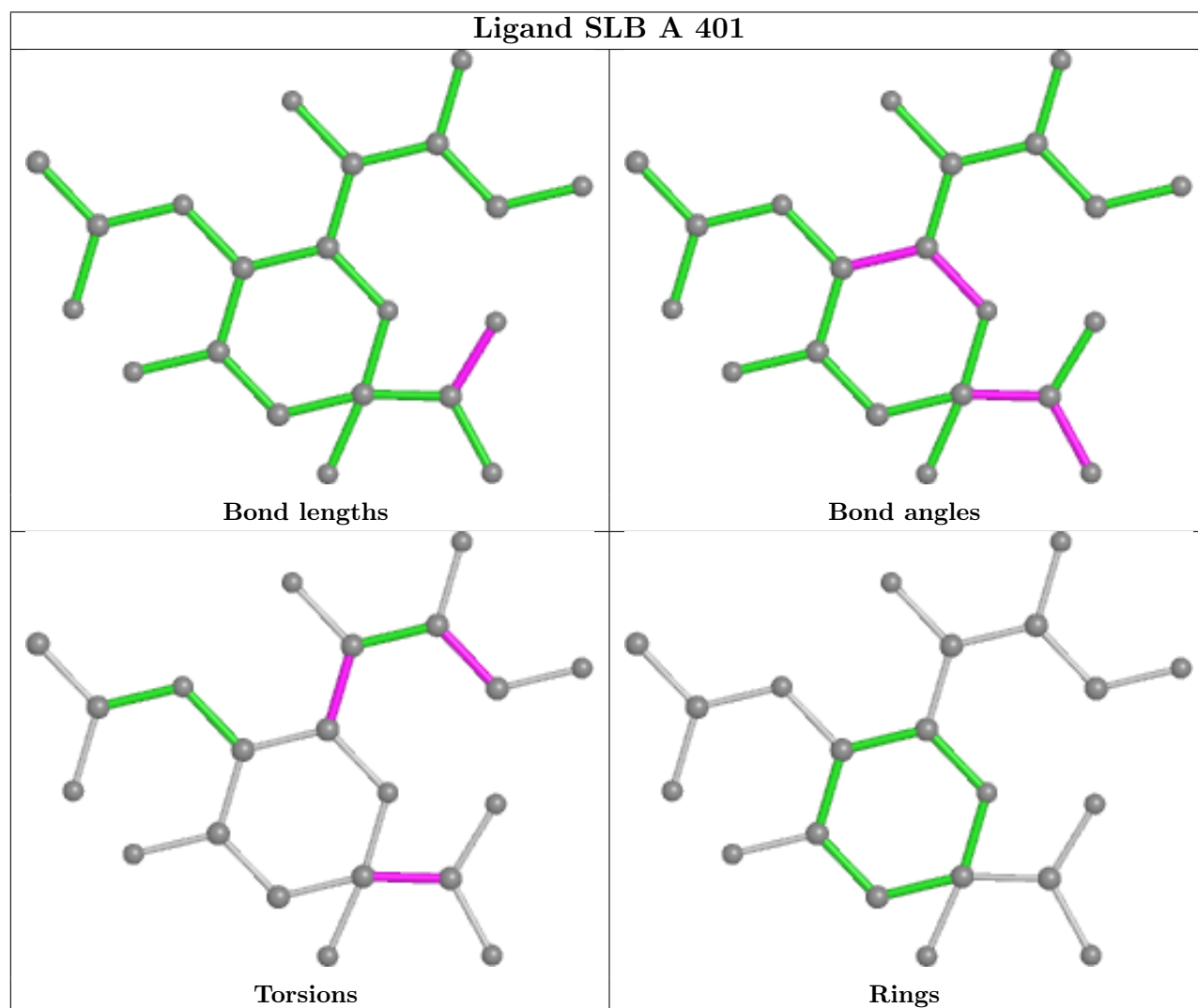
There are no ring outliers.

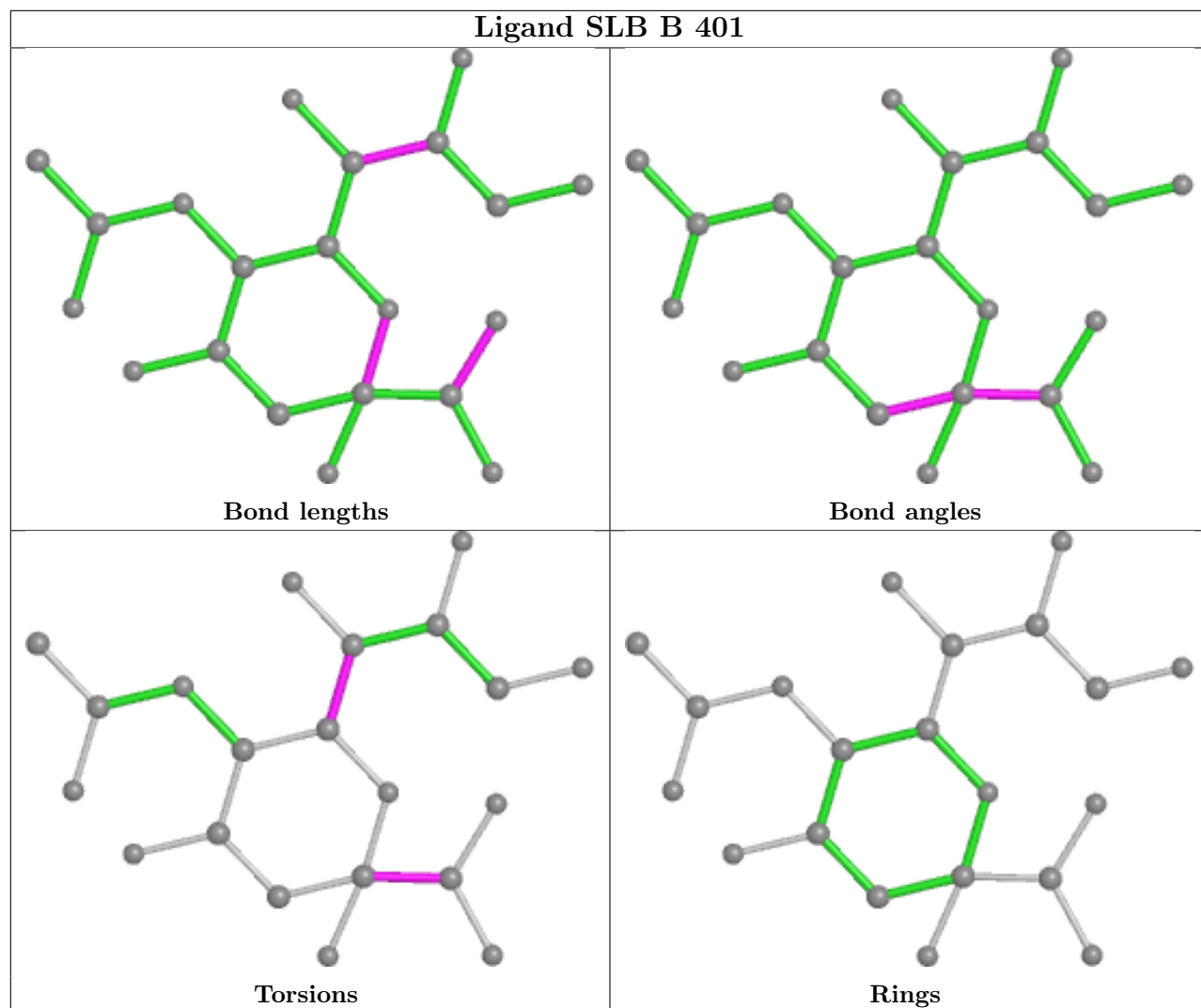
3 monomers are involved in 5 short contacts:

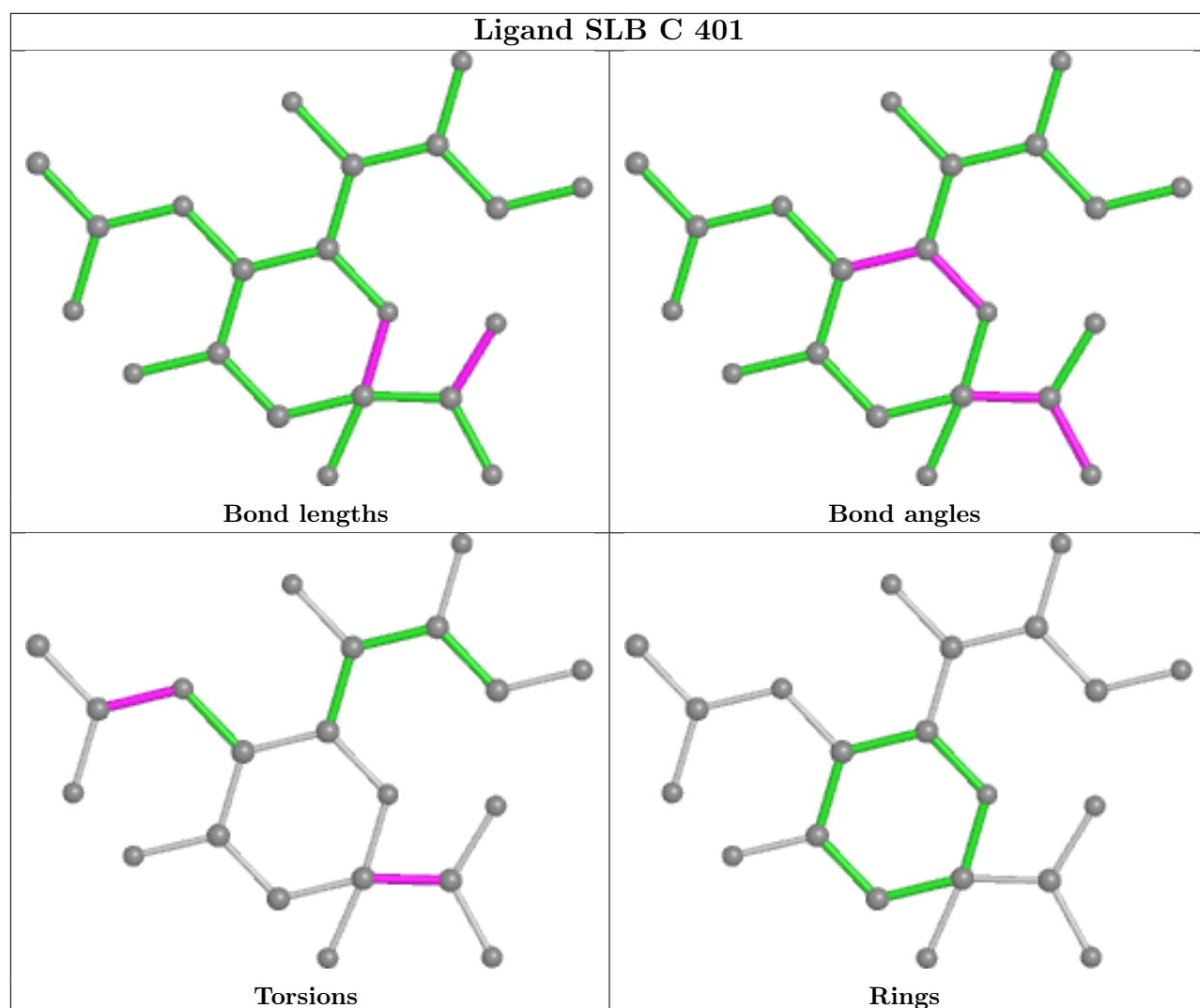
Mol	Chain	Res	Type	Clashes	Symm-Clashes
2	A	401	SLB	2	0
2	B	401	SLB	2	0
2	C	401	SLB	1	0

The following is a two-dimensional graphical depiction of Mogul quality analysis of bond lengths, bond angles, torsion angles, and ring geometry for all instances of the Ligand of Interest. In addition, ligands with molecular weight > 250 and outliers as shown on the validation Tables will also be included. For torsion angles, if less than 5% of the Mogul distribution of torsion angles is within 10 degrees of the torsion angle in question, then that torsion angle is considered an outlier. Any bond that is central to one or more torsion angles identified as an outlier by Mogul will be

highlighted in the graph. For rings, the root-mean-square deviation (RMSD) between the ring in question and similar rings identified by Mogul is calculated over all ring torsion angles. If the average RMSD is greater than 60 degrees and the minimal RMSD between the ring in question and any Mogul-identified rings is also greater than 60 degrees, then that ring is considered an outlier. The outliers are highlighted in purple. The color gray indicates Mogul did not find sufficient equivalents in the CSD to analyse the geometry.







5.7 Other polymers [i](#)

There are no such residues in this entry.

5.8 Polymer linkage issues [i](#)

There are no chain breaks in this entry.

6 Fit of model and data

6.1 Protein, DNA and RNA chains

In the following table, the column labelled ‘#RSRZ > 2’ contains the number (and percentage) of RSRZ outliers, followed by percent RSRZ outliers for the chain as percentile scores relative to all X-ray entries and entries of similar resolution. The OWAB column contains the minimum, median, 95th percentile and maximum values of the occupancy-weighted average B-factor per residue. The column labelled ‘Q < 0.9’ lists the number of (and percentage) of residues with an average occupancy less than 0.9.

Mol	Chain	Analysed	<RSRZ>	#RSRZ>2	OWAB(Å ²)	Q<0.9
1	A	200/203 (98%)	0.49	16 (8%) 12 17	88, 138, 210, 240	0
1	B	201/203 (99%)	0.37	13 (6%) 18 23	78, 125, 210, 243	0
1	C	200/203 (98%)	0.27	11 (5%) 25 32	86, 140, 223, 288	0
All	All	601/609 (98%)	0.38	40 (6%) 17 22	78, 134, 216, 288	0

All (40) RSRZ outliers are listed below:

Mol	Chain	Res	Type	RSRZ
1	A	183	ASN	11.6
1	A	382	ASP	7.4
1	B	311	LYS	6.7
1	C	382	ASP	5.9
1	C	304	GLY	5.5
1	A	271	TRP	5.3
1	A	303	ASN	5.3
1	C	303	ASN	4.9
1	B	284	TYR	4.2
1	C	311	LYS	3.9
1	B	302	ASN	3.8
1	B	305	THR	3.5
1	B	285	GLU	3.4
1	C	302	ASN	3.4
1	C	305	THR	3.3
1	A	361	TYR	3.3
1	A	301	ILE	3.3
1	A	204	LYS	3.3
1	A	276	LYS	3.2
1	B	312	LYS	3.0
1	C	290	PHE	3.0
1	B	290	PHE	2.9
1	A	272	ASN	2.8

Continued on next page...

Continued from previous page...

Mol	Chain	Res	Type	RSRZ
1	B	273	TYR	2.5
1	A	281	GLY	2.5
1	B	301	ILE	2.5
1	A	302	ASN	2.5
1	B	286	ASN	2.4
1	A	232	PHE	2.4
1	C	349	TYR	2.4
1	C	308	PRO	2.3
1	B	288	VAL	2.2
1	A	284	TYR	2.2
1	B	381	GLU	2.2
1	C	347	CYS	2.1
1	C	272	ASN	2.1
1	A	273	TYR	2.1
1	A	304	GLY	2.1
1	B	213	THR	2.0
1	A	185	LYS	2.0

6.2 Non-standard residues in protein, DNA, RNA chains [i](#)

There are no non-standard protein/DNA/RNA residues in this entry.

6.3 Carbohydrates [i](#)

There are no monosaccharides in this entry.

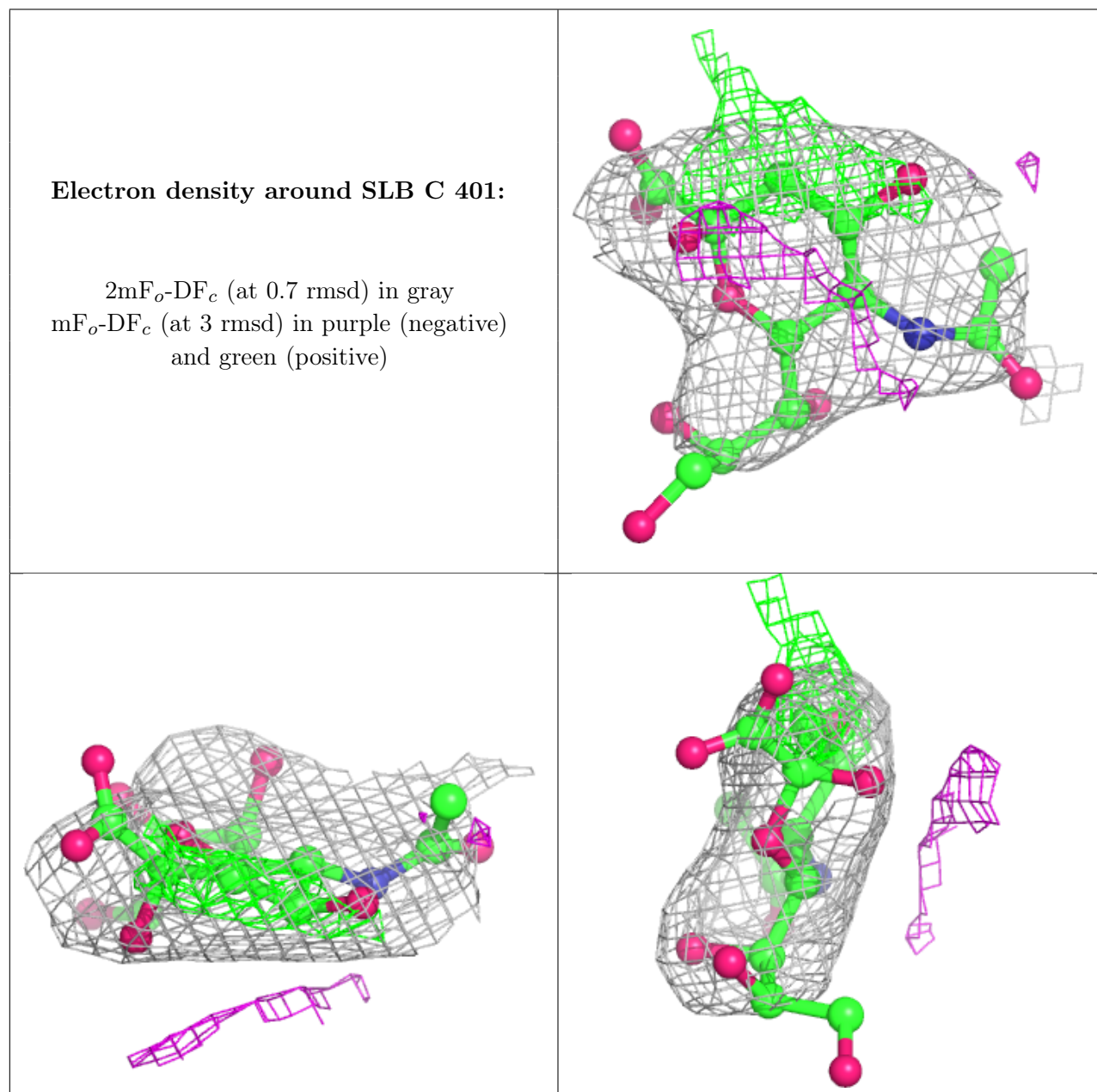
6.4 Ligands [i](#)

In the following table, the Atoms column lists the number of modelled atoms in the group and the number defined in the chemical component dictionary. The B-factors column lists the minimum, median, 95th percentile and maximum values of B factors of atoms in the group. The column labelled 'Q< 0.9' lists the number of atoms with occupancy less than 0.9.

Mol	Type	Chain	Res	Atoms	RSCC	RSR	B-factors(Å ²)	Q<0.9
2	SLB	C	401	21/21	0.86	0.35	214,266,335,373	0
2	SLB	A	401	21/21	0.94	0.15	121,128,138,154	0
2	SLB	B	401	21/21	0.95	0.13	100,103,118,131	0

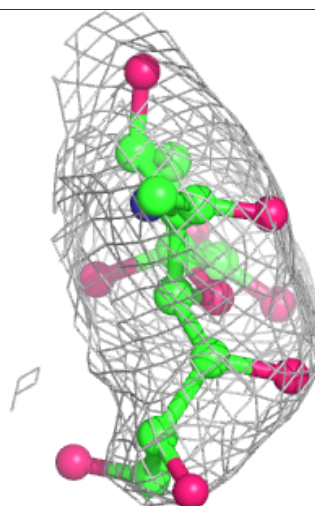
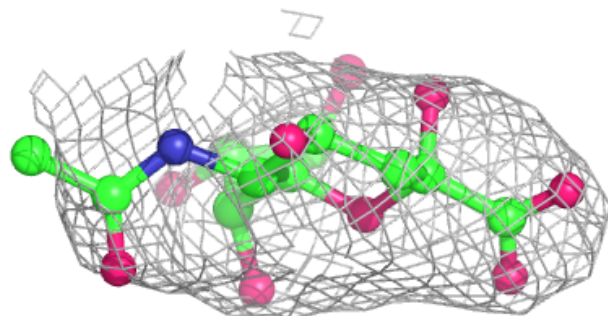
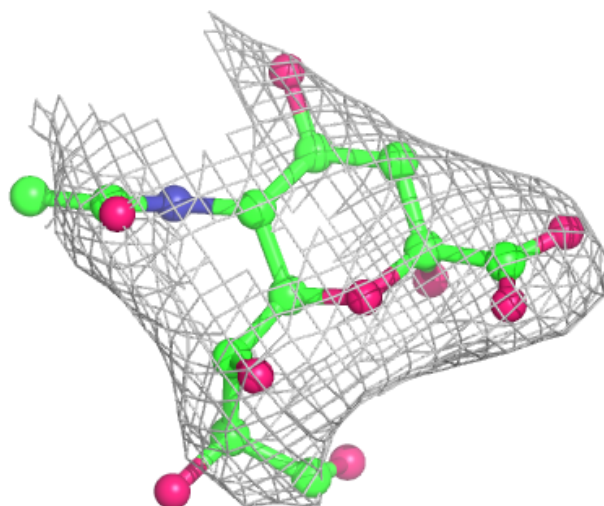
The following is a graphical depiction of the model fit to experimental electron density of all instances of the Ligand of Interest. In addition, ligands with molecular weight > 250 and outliers

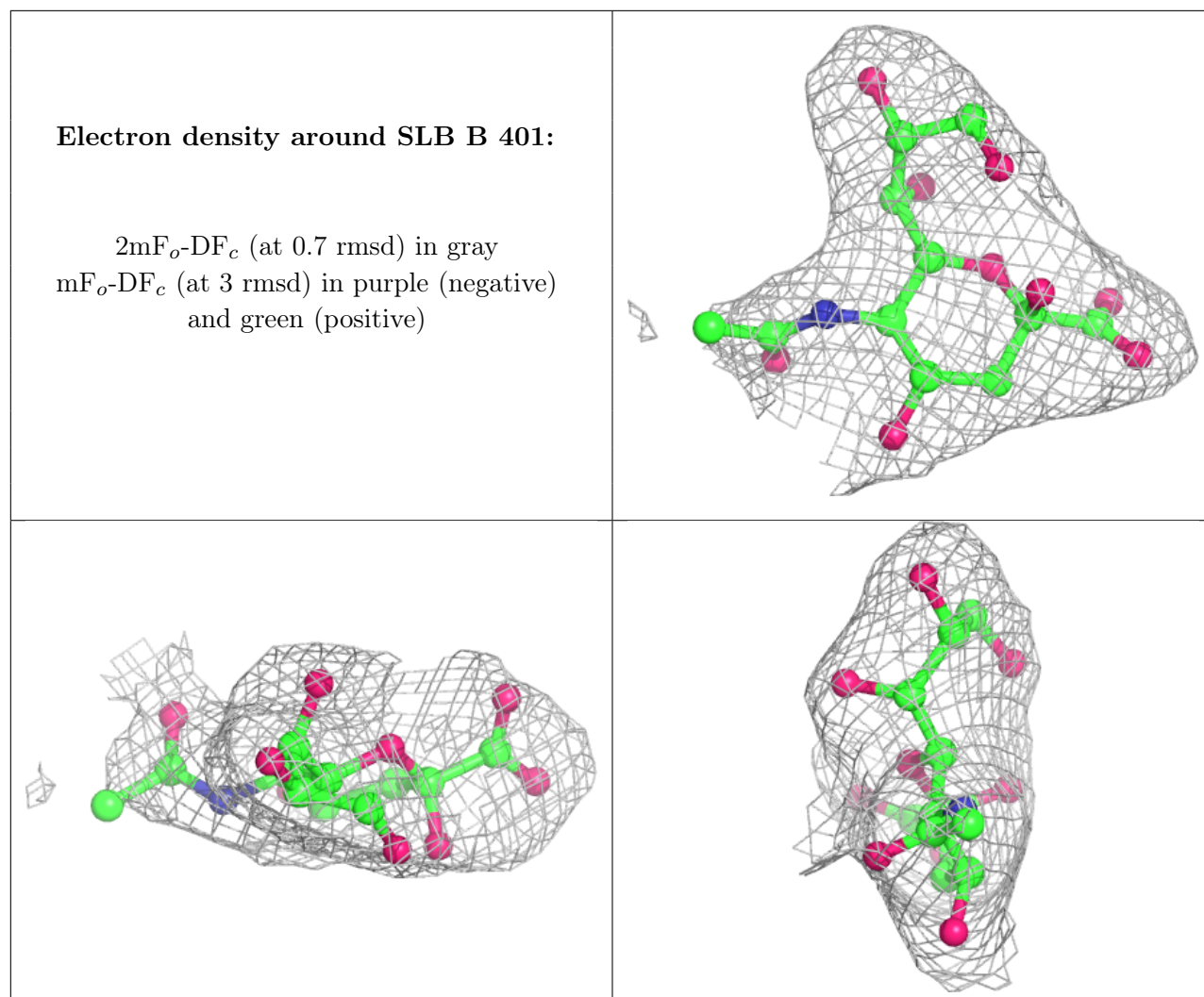
as shown on the geometry validation Tables will also be included. Each fit is shown from different orientation to approximate a three-dimensional view.



Electron density around SLB A 401:

$2mF_o-DF_c$ (at 0.7 rmsd) in gray
 mF_o-DF_c (at 3 rmsd) in purple (negative)
and green (positive)





6.5 Other polymers [i](#)

There are no such residues in this entry.