



Full wwPDB X-ray Structure Validation Report ⓘ

Apr 3, 2024 – 03:33 am BST

PDB ID : 8OKF
Title : WD repeat containing protein 5 (WDR5)- PER2 peptide
Authors : Wolf, E.; Boergel, A.
Deposited on : 2023-03-28
Resolution : 1.85 Å(reported)

This is a Full wwPDB X-ray Structure Validation Report for a publicly released PDB entry.

We welcome your comments at validation@mail.wwpdb.org

A user guide is available at

<https://www.wwpdb.org/validation/2017/XrayValidationReportHelp>

with specific help available everywhere you see the ⓘ symbol.

The types of validation reports are described at

<http://www.wwpdb.org/validation/2017/FAQs#types>.

The following versions of software and data (see [references ⓘ](#)) were used in the production of this report:

MolProbity : 4.02b-467
Mogul : 1.8.4, CSD as541be (2020)
Xtriage (Phenix) : 1.13
EDS : 2.36
Percentile statistics : 20191225.v01 (using entries in the PDB archive December 25th 2019)
Refmac : 5.8.0158
CCP4 : 7.0.044 (Gargrove)
Ideal geometry (proteins) : Engh & Huber (2001)
Ideal geometry (DNA, RNA) : Parkinson et al. (1996)
Validation Pipeline (wwPDB-VP) : 2.36

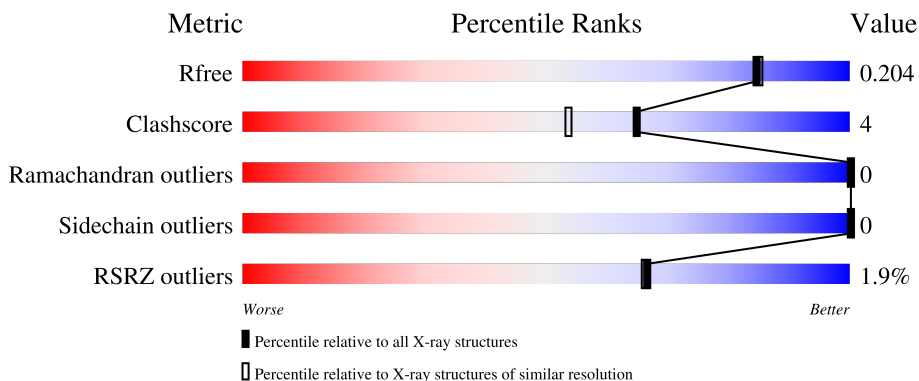
1 Overall quality at a glance

The following experimental techniques were used to determine the structure:

X-RAY DIFFRACTION

The reported resolution of this entry is 1.85 Å.

Percentile scores (ranging between 0-100) for global validation metrics of the entry are shown in the following graphic. The table shows the number of entries on which the scores are based.



Metric	Whole archive (#Entries)	Similar resolution (#Entries, resolution range(Å))
R_{free}	130704	2469 (1.86-1.86)
Clashscore	141614	2625 (1.86-1.86)
Ramachandran outliers	138981	2592 (1.86-1.86)
Sidechain outliers	138945	2592 (1.86-1.86)
RSRZ outliers	127900	2436 (1.86-1.86)

The table below summarises the geometric issues observed across the polymeric chains and their fit to the electron density. The red, orange, yellow and green segments of the lower bar indicate the fraction of residues that contain outliers for ≥ 3 , 2, 1 and 0 types of geometric quality criteria respectively. A grey segment represents the fraction of residues that are not modelled. The numeric value for each fraction is indicated below the corresponding segment, with a dot representing fractions $\leq 5\%$. The upper red bar (where present) indicates the fraction of residues that have poor fit to the electron density. The numeric value is given above the bar.

Mol	Chain	Length	Quality of chain
1	A	555	 5% 50% 5% 45%
2	B	15	 20% 53% 7% 40%

The following table lists non-polymeric compounds, carbohydrate monomers and non-standard residues in protein, DNA, RNA chains that are outliers for geometric or electron-density-fit criteria:

Mol	Type	Chain	Res	Chirality	Geometry	Clashes	Electron density
4	CL	A	403	-	-	X	-

2 Entry composition

There are 6 unique types of molecules in this entry. The entry contains 2538 atoms, of which 0 are hydrogens and 0 are deuteriums.

In the tables below, the ZeroOcc column contains the number of atoms modelled with zero occupancy, the AltConf column contains the number of residues with at least one atom in alternate conformation and the Trace column contains the number of residues modelled with at most 2 atoms.

- Molecule 1 is a protein called Glutathione S-transferase class-mu 26 kDa isozyme, WD repeat domain 5.

Mol	Chain	Residues	Atoms					ZeroOcc	AltConf	Trace
			Total	C	N	O	S			
1	A	305	2349	1497	390	452	10	0	0	0

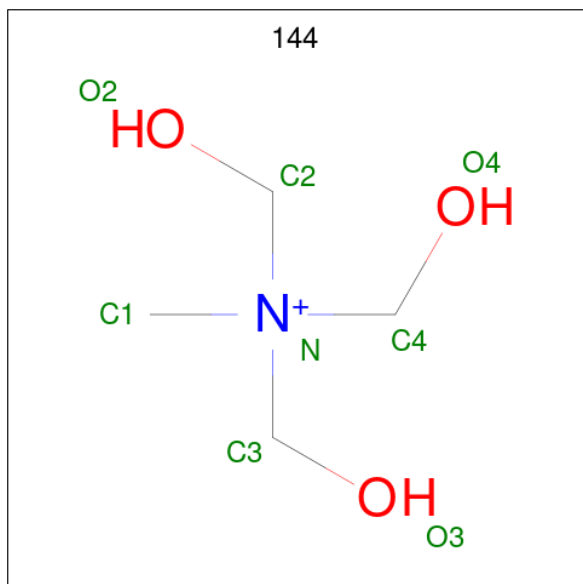
There are 24 discrepancies between the modelled and reference sequences:

Chain	Residue	Modelled	Actual	Comment	Reference
A	-220	MET	-	initiating methionine	UNP P08515
A	-219	LYS	-	expression tag	UNP P08515
A	-218	HIS	-	expression tag	UNP P08515
A	-217	HIS	-	expression tag	UNP P08515
A	-216	HIS	-	expression tag	UNP P08515
A	-215	HIS	-	expression tag	UNP P08515
A	-214	HIS	-	expression tag	UNP P08515
A	-213	HIS	-	expression tag	UNP P08515
A	-212	ASN	-	expression tag	UNP P08515
A	-211	THR	-	expression tag	UNP P08515
A	-210	SER	-	expression tag	UNP P08515
A	-209	SER	-	expression tag	UNP P08515
A	-208	ASN	-	expression tag	UNP P08515
A	-207	SER	-	expression tag	UNP P08515
A	12	SER	-	linker	UNP P08515
A	13	ASP	-	linker	UNP P08515
A	14	LEU	-	linker	UNP P08515
A	15	GLU	-	linker	UNP P08515
A	16	VAL	-	linker	UNP P08515
A	17	LEU	-	linker	UNP P08515
A	18	PHE	-	linker	UNP P08515
A	19	GLN	-	linker	UNP P08515
A	20	GLY	-	linker	UNP P08515
A	21	PRO	-	linker	UNP P08515

- Molecule 2 is a protein called PER2 peptide.

Mol	Chain	Residues	Atoms					ZeroOcc	AltConf	Trace
			Total	C	N	O	S			
2	B	9	57	35	9	12	1	0	0	0

- Molecule 3 is TRIS-HYDROXYMETHYL-METHYL-AMMONIUM (three-letter code: 144) (formula: $C_4H_{12}NO_3$).



Mol	Chain	Residues	Atoms				ZeroOcc	AltConf
			Total	C	N	O		
3	A	1	8	4	1	3	0	0
3	A	1	8	4	1	3	0	0

- Molecule 4 is CHLORIDE ION (three-letter code: CL) (formula: Cl).

Mol	Chain	Residues	Atoms		ZeroOcc	AltConf
			Total	Cl		
4	A	2	2	2	0	0

- Molecule 5 is PENTAETHYLENE GLYCOL (three-letter code: 1PE) (formula: $C_{10}H_{22}O_6$).



Mol	Chain	Residues	Atoms		ZeroOcc	AltConf
5	A	1	Total	C O	0	0
			16	10 6		

- Molecule 6 is water.

Mol	Chain	Residues	Atoms		ZeroOcc	AltConf
6	A	98	Total	O	0	0
			98	98		

4 Data and refinement statistics

Property	Value	Source
Space group	P 42 21 2	Depositor
Cell constants a, b, c, α , β , γ	78.15Å 78.15Å 101.75Å 90.00° 90.00° 90.00°	Depositor
Resolution (Å)	39.11 – 1.85 39.08 – 1.85	Depositor EDS
% Data completeness (in resolution range)	99.9 (39.11-1.85) 100.0 (39.08-1.85)	Depositor EDS
R_{merge}	(Not available)	Depositor
R_{sym}	(Not available)	Depositor
$\langle I/\sigma(I) \rangle$ ¹	2.56 (at 1.85Å)	Xtrriage
Refinement program	REFMAC 5.8.0267	Depositor
R, R_{free}	0.165 , 0.201 0.174 , 0.204	Depositor DCC
R_{free} test set	1336 reflections (4.84%)	wwPDB-VP
Wilson B-factor (Å ²)	18.7	Xtrriage
Anisotropy	0.123	Xtrriage
Bulk solvent k_{sol} (e/Å ³), B_{sol} (Å ²)	0.38 , 49.6	EDS
L-test for twinning ²	$\langle L \rangle = 0.50$, $\langle L^2 \rangle = 0.33$	Xtrriage
Estimated twinning fraction	No twinning to report.	Xtrriage
F_o, F_c correlation	0.95	EDS
Total number of atoms	2538	wwPDB-VP
Average B, all atoms (Å ²)	20.0	wwPDB-VP

Xtrriage's analysis on translational NCS is as follows: *The largest off-origin peak in the Patterson function is 5.20% of the height of the origin peak. No significant pseudotranslation is detected.*

¹Intensities estimated from amplitudes.

²Theoretical values of $\langle |L| \rangle$, $\langle L^2 \rangle$ for acentric reflections are 0.5, 0.333 respectively for untwinned datasets, and 0.375, 0.2 for perfectly twinned datasets.

5 Model quality [i](#)

5.1 Standard geometry [i](#)

Bond lengths and bond angles in the following residue types are not validated in this section: 1PE, 144, CL

The Z score for a bond length (or angle) is the number of standard deviations the observed value is removed from the expected value. A bond length (or angle) with $|Z| > 5$ is considered an outlier worth inspection. RMSZ is the root-mean-square of all Z scores of the bond lengths (or angles).

Mol	Chain	Bond lengths		Bond angles	
		RMSZ	# Z >5	RMSZ	# Z >5
1	A	0.74	0/2405	0.86	1/3266 (0.0%)
2	B	0.76	0/56	1.07	0/76
All	All	0.74	0/2461	0.86	1/3342 (0.0%)

There are no bond length outliers.

All (1) bond angle outliers are listed below:

Mol	Chain	Res	Type	Atoms	Z	Observed(°)	Ideal(°)
1	A	30	PRO	N-CA-CB	5.00	109.30	103.30

There are no chirality outliers.

There are no planarity outliers.

5.2 Too-close contacts [i](#)

In the following table, the Non-H and H(model) columns list the number of non-hydrogen atoms and hydrogen atoms in the chain respectively. The H(added) column lists the number of hydrogen atoms added and optimized by MolProbity. The Clashes column lists the number of clashes within the asymmetric unit, whereas Symm-Clashes lists symmetry-related clashes.

Mol	Chain	Non-H	H(model)	H(added)	Clashes	Symm-Clashes
1	A	2349	0	2303	18	0
2	B	57	0	54	0	1
3	A	16	0	24	4	0
4	A	2	0	0	2	0
5	A	16	0	22	1	0
6	A	98	0	0	1	1
All	All	2538	0	2403	20	2

The all-atom clashscore is defined as the number of clashes found per 1000 atoms (including hydrogen atoms). The all-atom clashscore for this structure is 4.

All (20) close contacts within the same asymmetric unit are listed below, sorted by their clash magnitude.

Atom-1	Atom-2	Interatomic distance (Å)	Clash overlap (Å)
1:A:151:GLU:OE1	3:A:402:144:H13	1.60	1.00
1:A:91:SER:O	3:A:401:144:H12	1.77	0.83
1:A:197:ILE:HD11	1:A:229:ILE:CD1	2.23	0.69
3:A:401:144:H13	6:A:537:HOH:O	1.95	0.66
1:A:197:ILE:HD11	1:A:229:ILE:HD11	1.80	0.63
1:A:63:SER:HB3	1:A:93:VAL:HG13	1.87	0.55
1:A:315:ILE:HG12	1:A:331:LYS:HG2	1.88	0.54
5:A:405:1PE:OH7	5:A:405:1PE:H151	2.08	0.53
1:A:49:SER:O	3:A:401:144:H11	2.11	0.51
1:A:257:ASN:ND2	4:A:403:CL:CL	2.66	0.50
1:A:41:LEU:HB2	1:A:327:ILE:HB	1.93	0.49
1:A:59:TRP:CZ3	1:A:80:GLU:HG3	2.49	0.47
1:A:104:SER:O	1:A:111:LEU:HA	2.15	0.46
1:A:218:SER:HB2	1:A:261:CYS:HA	1.98	0.45
1:A:197:ILE:CD1	1:A:229:ILE:HD11	2.47	0.43
1:A:262:ILE:N	4:A:403:CL:CL	2.84	0.42
1:A:310:HIS:CG	1:A:311:PRO:HD2	2.55	0.42
1:A:214:ASN:N	1:A:215:PRO:CD	2.83	0.41
1:A:51:VAL:CG1	1:A:327:ILE:HG12	2.50	0.41
1:A:220:VAL:HA	1:A:230:LEU:O	2.21	0.41

All (2) symmetry-related close contacts are listed below. The label for Atom-2 includes the symmetry operator and encoded unit-cell translations to be applied.

Atom-1	Atom-2	Interatomic distance (Å)	Clash overlap (Å)
6:A:518:HOH:O	6:A:518:HOH:O[2_655]	1.36	0.84
2:B:1210:CYS:SG	2:B:1210:CYS:SG[8_555]	1.73	0.47

5.3 Torsion angles [i](#)

5.3.1 Protein backbone [i](#)

In the following table, the Percentiles column shows the percent Ramachandran outliers of the chain as a percentile score with respect to all X-ray entries followed by that with respect to entries of similar resolution.

The Analysed column shows the number of residues for which the backbone conformation was analysed, and the total number of residues.

Mol	Chain	Analysed	Favoured	Allowed	Outliers	Percentiles	
1	A	303/555 (55%)	285 (94%)	18 (6%)	0	100	100
2	B	7/15 (47%)	7 (100%)	0	0	100	100
All	All	310/570 (54%)	292 (94%)	18 (6%)	0	100	100

There are no Ramachandran outliers to report.

5.3.2 Protein sidechains [i](#)

In the following table, the Percentiles column shows the percent sidechain outliers of the chain as a percentile score with respect to all X-ray entries followed by that with respect to entries of similar resolution.

The Analysed column shows the number of residues for which the sidechain conformation was analysed, and the total number of residues.

Mol	Chain	Analysed	Rotameric	Outliers	Percentiles	
1	A	262/491 (53%)	262 (100%)	0	100	100
2	B	6/11 (54%)	6 (100%)	0	100	100
All	All	268/502 (53%)	268 (100%)	0	100	100

There are no protein residues with a non-rotameric sidechain to report.

Sometimes sidechains can be flipped to improve hydrogen bonding and reduce clashes. There are no such sidechains identified.

5.3.3 RNA [i](#)

There are no RNA molecules in this entry.

5.4 Non-standard residues in protein, DNA, RNA chains [i](#)

There are no non-standard protein/DNA/RNA residues in this entry.

5.5 Carbohydrates [i](#)

There are no monosaccharides in this entry.

5.6 Ligand geometry

Of 5 ligands modelled in this entry, 2 are monoatomic - leaving 3 for Mogul analysis.

In the following table, the Counts columns list the number of bonds (or angles) for which Mogul statistics could be retrieved, the number of bonds (or angles) that are observed in the model and the number of bonds (or angles) that are defined in the Chemical Component Dictionary. The Link column lists molecule types, if any, to which the group is linked. The Z score for a bond length (or angle) is the number of standard deviations the observed value is removed from the expected value. A bond length (or angle) with $|Z| > 2$ is considered an outlier worth inspection. RMSZ is the root-mean-square of all Z scores of the bond lengths (or angles).

Mol	Type	Chain	Res	Link	Bond lengths			Bond angles		
					Counts	RMSZ	# Z > 2	Counts	RMSZ	# Z > 2
5	1PE	A	405	-	15,15,15	0.28	0	14,14,14	0.35	0
3	144	A	402	-	1,7,7	0.53	0	3,9,9	0.32	0
3	144	A	401	-	1,7,7	0.15	0	3,9,9	0.23	0

In the following table, the Chirals column lists the number of chiral outliers, the number of chiral centers analysed, the number of these observed in the model and the number defined in the Chemical Component Dictionary. Similar counts are reported in the Torsion and Rings columns. '2' means no outliers of that kind were identified.

Mol	Type	Chain	Res	Link	Chirals	Torsions	Rings
5	1PE	A	405	-	-	8/13/13/13	-
3	144	A	402	-	-	0/0/9/9	-
3	144	A	401	-	-	0/0/9/9	-

There are no bond length outliers.

There are no bond angle outliers.

There are no chirality outliers.

All (8) torsion outliers are listed below:

Mol	Chain	Res	Type	Atoms
5	A	405	1PE	OH4-C13-C23-OH3
5	A	405	1PE	OH7-C16-C26-OH6
5	A	405	1PE	OH6-C15-C25-OH5
5	A	405	1PE	C23-C13-OH4-C24
5	A	405	1PE	C16-C26-OH6-C15
5	A	405	1PE	C13-C23-OH3-C22
5	A	405	1PE	OH5-C14-C24-OH4
5	A	405	1PE	C25-C15-OH6-C26

There are no ring outliers.

3 monomers are involved in 5 short contacts:

Mol	Chain	Res	Type	Clashes	Symm-Clashes
5	A	405	1PE	1	0
3	A	402	144	1	0
3	A	401	144	3	0

5.7 Other polymers [i](#)

There are no such residues in this entry.

5.8 Polymer linkage issues [i](#)

There are no chain breaks in this entry.

6 Fit of model and data [i](#)

6.1 Protein, DNA and RNA chains [i](#)

In the following table, the column labelled ‘#RSRZ> 2’ contains the number (and percentage) of RSRZ outliers, followed by percent RSRZ outliers for the chain as percentile scores relative to all X-ray entries and entries of similar resolution. The OWAB column contains the minimum, median, 95th percentile and maximum values of the occupancy-weighted average B-factor per residue. The column labelled ‘Q< 0.9’ lists the number of (and percentage) of residues with an average occupancy less than 0.9.

Mol	Chain	Analysed	<RSRZ>	#RSRZ>2	OWAB(Å ²)	Q<0.9
1	A	305/555 (54%)	-0.52	3 (0%) 82 82	14, 18, 28, 42	0
2	B	9/15 (60%)	0.94	3 (33%) 0 0	22, 28, 43, 47	0
All	All	314/570 (55%)	-0.48	6 (1%) 66 66	14, 18, 29, 47	0

All (6) RSRZ outliers are listed below:

Mol	Chain	Res	Type	RSRZ
2	B	1204	ALA	2.9
2	B	1211	VAL	2.7
1	A	159	LYS	2.5
2	B	1203	THR	2.2
1	A	162	LYS	2.2
1	A	243	TYR	2.0

6.2 Non-standard residues in protein, DNA, RNA chains [i](#)

There are no non-standard protein/DNA/RNA residues in this entry.

6.3 Carbohydrates [i](#)

There are no monosaccharides in this entry.

6.4 Ligands [i](#)

In the following table, the Atoms column lists the number of modelled atoms in the group and the number defined in the chemical component dictionary. The B-factors column lists the minimum, median, 95th percentile and maximum values of B factors of atoms in the group. The column labelled ‘Q< 0.9’ lists the number of atoms with occupancy less than 0.9.

Mol	Type	Chain	Res	Atoms	RSCC	RSR	B-factors(\AA^2)	Q<0.9
5	1PE	A	405	16/16	0.84	0.17	26,39,49,50	0
3	144	A	402	8/8	0.88	0.13	20,26,30,31	0
3	144	A	401	8/8	0.88	0.13	15,20,23,23	0
4	CL	A	404	1/1	0.97	0.11	36,36,36,36	0
4	CL	A	403	1/1	0.98	0.12	35,35,35,35	0

6.5 Other polymers [i](#)

There are no such residues in this entry.