



Full wwPDB X-ray Structure Validation Report ⓘ

Dec 14, 2024 – 10:04 PM EST

PDB ID : 3OLT
Title : X-ray crystal structure of arachidonic acid bound to the cyclooxygenase channel of R513H murine COX-2
Authors : Vecchio, A.J.; Malkowski, M.G.
Deposited on : 2010-08-26
Resolution : 2.45 Å(reported)

This is a Full wwPDB X-ray Structure Validation Report for a publicly released PDB entry.

We welcome your comments at validation@mail.wwpdb.org

A user guide is available at

<https://www.wwpdb.org/validation/2017/XrayValidationReportHelp>

with specific help available everywhere you see the ⓘ symbol.

The types of validation reports are described at

<http://www.wwpdb.org/validation/2017/FAQs#types>.

The following versions of software and data (see [references ⓘ](#)) were used in the production of this report:

MolProbity : 4.02b-467
Mogul : 2022.3.0, CSD as543be (2022)
Xtriage (Phenix) : 1.21
EDS : 3.0
buster-report : 1.1.7 (2018)
Percentile statistics : 20231227.v01 (using entries in the PDB archive December 27th 2023)
CCP4 : 9.0.004 (Gargrove)
Density-Fitness : 1.0.11
Ideal geometry (proteins) : Engh & Huber (2001)
Ideal geometry (DNA, RNA) : Parkinson et al. (1996)
Validation Pipeline (wwPDB-VP) : 2.40

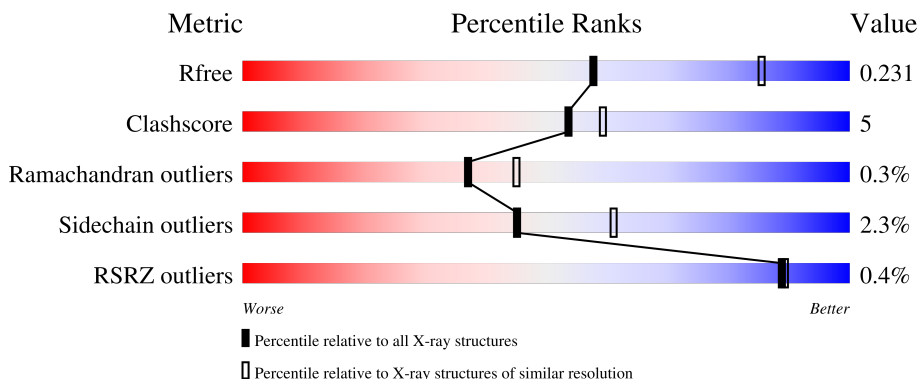
1 Overall quality at a glance

The following experimental techniques were used to determine the structure:

X-RAY DIFFRACTION

The reported resolution of this entry is 2.45 Å.

Percentile scores (ranging between 0-100) for global validation metrics of the entry are shown in the following graphic. The table shows the number of entries on which the scores are based.



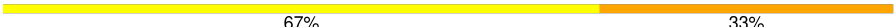
Metric	Whole archive (#Entries)	Similar resolution (#Entries, resolution range(Å))
R_{free}	164625	1096 (2.46-2.46)
Clashscore	180529	1178 (2.46-2.46)
Ramachandran outliers	177936	1170 (2.46-2.46)
Sidechain outliers	177891	1170 (2.46-2.46)
RSRZ outliers	164620	1096 (2.46-2.46)

The table below summarises the geometric issues observed across the polymeric chains and their fit to the electron density. The red, orange, yellow and green segments of the lower bar indicate the fraction of residues that contain outliers for ≥ 3 , 2, 1 and 0 types of geometric quality criteria respectively. A grey segment represents the fraction of residues that are not modelled. The numeric value for each fraction is indicated below the corresponding segment, with a dot representing fractions $\leq 5\%$. The upper red bar (where present) indicates the fraction of residues that have poor fit to the electron density. The numeric value is given above the bar.

Mol	Chain	Length	Quality of chain
1	A	592	 82% 10% • 7%
1	B	592	 85% 7% • 7%
2	C	2	 100%
2	E	2	 100%
3	D	3	 67% 33%

Continued on next page...

Continued from previous page...

Mol	Chain	Length	Quality of chain
3	F	3	 67% 33%

The following table lists non-polymeric compounds, carbohydrate monomers and non-standard residues in protein, DNA, RNA chains that are outliers for geometric or electron-density-fit criteria:

Mol	Type	Chain	Res	Chirality	Geometry	Clashes	Electron density
2	NAG	C	1	X	-	-	-
2	NAG	E	2	X	-	-	-
6	COH	B	709	X	-	-	-

2 Entry composition [i](#)

There are 9 unique types of molecules in this entry. The entry contains 9793 atoms, of which 0 are hydrogens and 0 are deuteriums.

In the tables below, the ZeroOcc column contains the number of atoms modelled with zero occupancy, the AltConf column contains the number of residues with at least one atom in alternate conformation and the Trace column contains the number of residues modelled with at most 2 atoms.

- Molecule 1 is a protein called Prostaglandin G/H synthase 2.

Mol	Chain	Residues	Atoms					ZeroOcc	AltConf	Trace
			Total	C	N	O	S			
1	A	551	4459	2882	743	809	25	0	5	0
1	B	551	4453	2878	743	807	25	0	4	0

There are 16 discrepancies between the modelled and reference sequences:

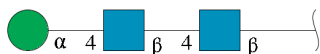
Chain	Residue	Modelled	Actual	Comment	Reference
A	28	ALA	-	expression tag	UNP Q05769
A	29	HIS	-	expression tag	UNP Q05769
A	30	HIS	-	expression tag	UNP Q05769
A	31	HIS	-	expression tag	UNP Q05769
A	32	HIS	-	expression tag	UNP Q05769
A	33	HIS	-	expression tag	UNP Q05769
A	34	HIS	-	expression tag	UNP Q05769
A	513	HIS	ARG	engineered mutation	UNP Q05769
B	28	ALA	-	expression tag	UNP Q05769
B	29	HIS	-	expression tag	UNP Q05769
B	30	HIS	-	expression tag	UNP Q05769
B	31	HIS	-	expression tag	UNP Q05769
B	32	HIS	-	expression tag	UNP Q05769
B	33	HIS	-	expression tag	UNP Q05769
B	34	HIS	-	expression tag	UNP Q05769
B	513	HIS	ARG	engineered mutation	UNP Q05769

- Molecule 2 is an oligosaccharide called 2-acetamido-2-deoxy-beta-D-glucopyranose-(1-4)-2-acetamido-2-deoxy-beta-D-glucopyranose.



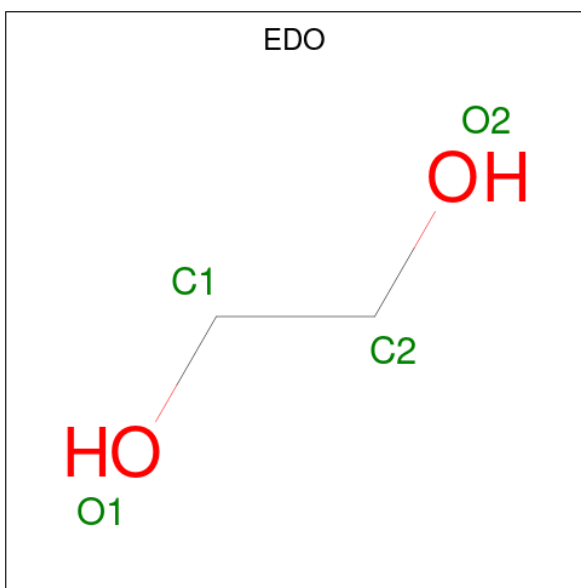
Mol	Chain	Residues	Atoms				ZeroOcc	AltConf	Trace
2	C	2	Total	C	N	O	0	0	0
			28	16	2	10			
2	E	2	Total	C	N	O	0	0	0
			28	16	2	10			

- Molecule 3 is an oligosaccharide called alpha-D-mannopyranose-(1-4)-2-acetamido-2-deoxy-beta-D-glucopyranose-(1-4)-2-acetamido-2-deoxy-beta-D-glucopyranose.



Mol	Chain	Residues	Atoms				ZeroOcc	AltConf	Trace
3	D	3	Total	C	N	O	0	0	0
			39	22	2	15			
3	F	3	Total	C	N	O	0	0	0
			39	22	2	15			

- Molecule 4 is 1,2-ETHANEDIOL (three-letter code: EDO) (formula: C₂H₆O₂).



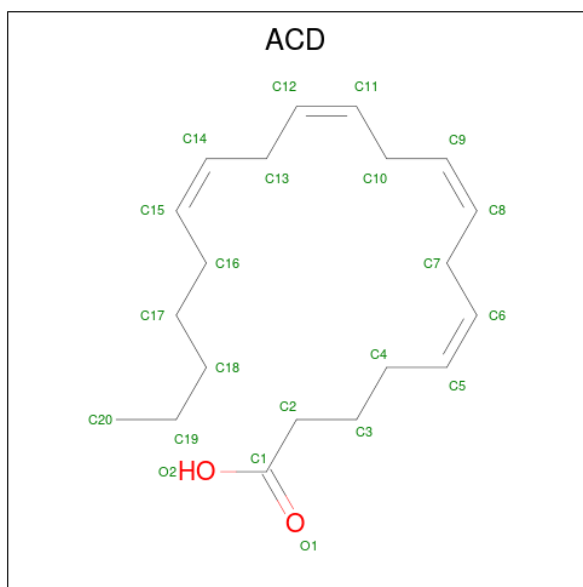
Mol	Chain	Residues	Atoms			ZeroOcc	AltConf
4	A	1	Total	C	O	0	0
			4	2	2		
4	A	1	Total	C	O	0	0
			4	2	2		
4	A	1	Total	C	O	0	0
			4	2	2		

Continued on next page...

Continued from previous page...

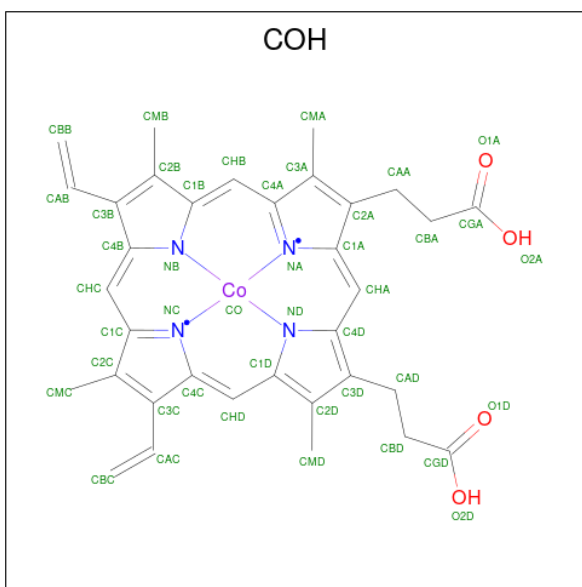
Mol	Chain	Residues	Atoms	ZeroOcc	AltConf
4	A	1	Total C O 4 2 2	0	0
4	A	1	Total C O 4 2 2	0	0
4	A	1	Total C O 4 2 2	0	0
4	A	1	Total C O 4 2 2	0	0
4	B	1	Total C O 4 2 2	0	0
4	B	1	Total C O 4 2 2	0	0
4	B	1	Total C O 4 2 2	0	0
4	B	1	Total C O 4 2 2	0	0
4	B	1	Total C O 4 2 2	0	0
4	B	1	Total C O 4 2 2	0	0
4	B	1	Total C O 4 2 2	0	0
4	B	1	Total C O 4 2 2	0	0

- Molecule 5 is ARACHIDONIC ACID (three-letter code: ACD) (formula: C₂₀H₃₂O₂).



Mol	Chain	Residues	Atoms			ZeroOcc	AltConf
5	A	1	Total	C	O	0	0
			22	20	2		
5	B	1	Total	C	O	0	0
			22	20	2		

- Molecule 6 is PROTOPORPHYRIN IX CONTAINING CO (three-letter code: COH) (formula: $C_{34}H_{32}CoN_4O_4$).



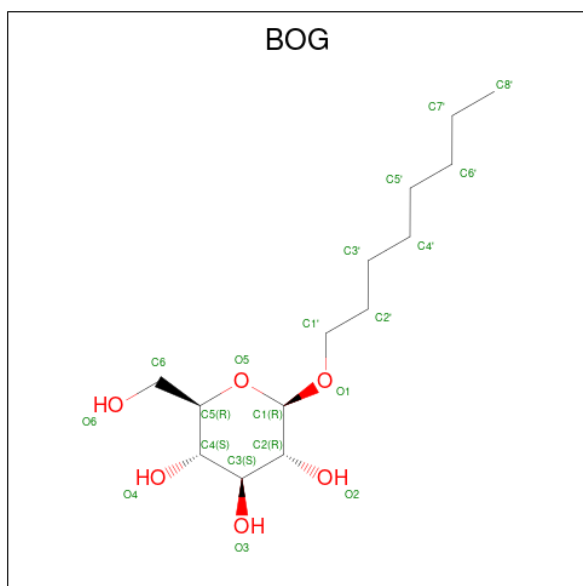
Mol	Chain	Residues	Atoms				ZeroOcc	AltConf	
6	A	1	Total	C	Co	N	O	0	0
			43	34	1	4	4		
6	B	1	Total	C	Co	N	O	0	0
			43	34	1	4	4		

- Molecule 7 is 2-acetamido-2-deoxy-beta-D-glucopyranose (three-letter code: NAG) (formula: $C_8H_{15}NO_6$).



Mol	Chain	Residues	Atoms			ZeroOcc	AltConf	
7	A	1	Total	C	N	O	0	0
			14	8	1	5		
7	B	1	Total	C	N	O	0	0
			14	8	1	5		

- Molecule 8 is octyl beta-D-glucopyranoside (three-letter code: BOG) (formula: $C_{14}H_{28}O_6$).



Mol	Chain	Residues	Atoms			ZeroOcc	AltConf
8	A	1	Total	C	O	0	0
			20	14	6		

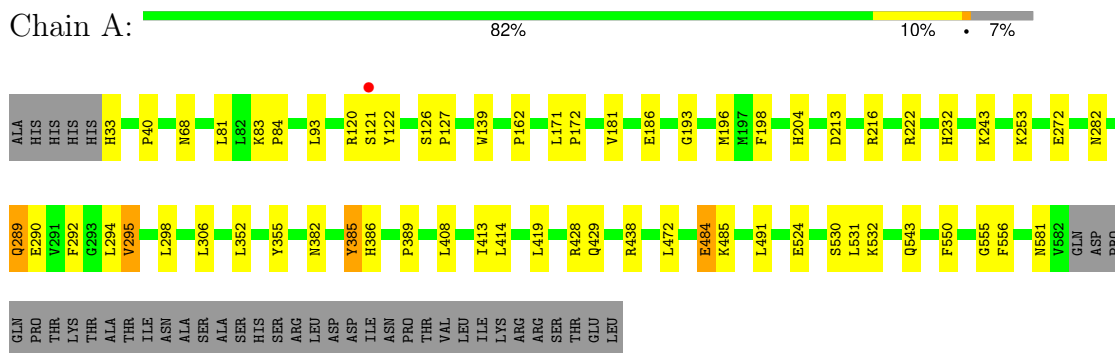
- Molecule 9 is water.

Mol	Chain	Residues	Atoms		ZeroOcc	AltConf
9	A	267	Total 267	O 267	0	0
9	B	246	Total 246	O 246	0	0

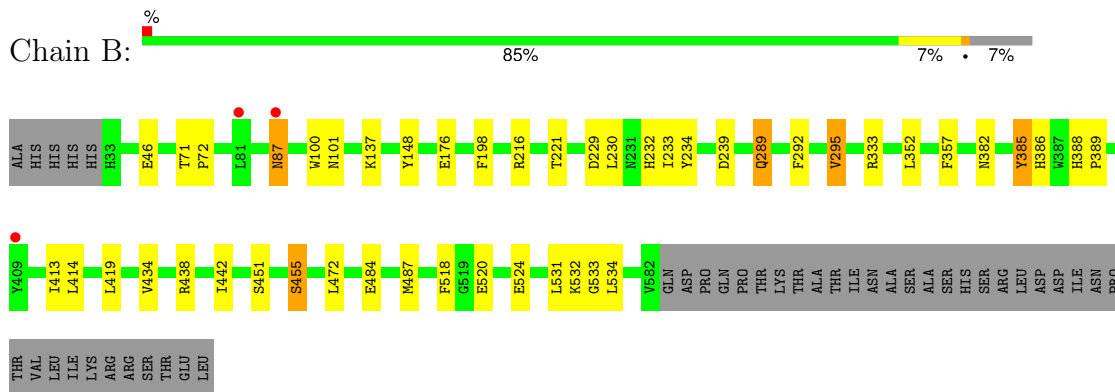
3 Residue-property plots [i](#)

These plots are drawn for all protein, RNA, DNA and oligosaccharide chains in the entry. The first graphic for a chain summarises the proportions of the various outlier classes displayed in the second graphic. The second graphic shows the sequence view annotated by issues in geometry and electron density. Residues are color-coded according to the number of geometric quality criteria for which they contain at least one outlier: green = 0, yellow = 1, orange = 2 and red = 3 or more. A red dot above a residue indicates a poor fit to the electron density ($RSRZ > 2$). Stretches of 2 or more consecutive residues without any outlier are shown as a green connector. Residues present in the sample, but not in the model, are shown in grey.

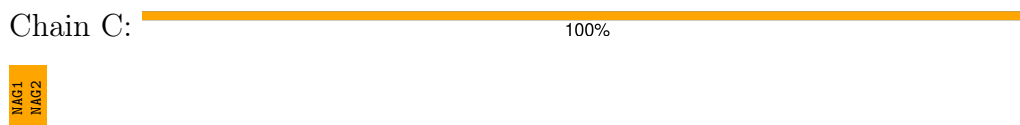
- Molecule 1: Prostaglandin G/H synthase 2



- Molecule 1: Prostaglandin G/H synthase 2



- Molecule 2: 2-acetamido-2-deoxy-beta-D-glucopyranose-(1-4)-2-acetamido-2-deoxy-beta-D-glucopyranose



- Molecule 2: 2-acetamido-2-deoxy-beta-D-glucopyranose-(1-4)-2-acetamido-2-deoxy-beta-D-glucopyranose



MAG1
MAG2

- Molecule 3: alpha-D-mannopyranose-(1-4)-2-acetamido-2-deoxy-beta-D-glucopyranose-(1-4)-2-acetamido-2-deoxy-beta-D-glucopyranose

Chain D:  67% 33%MAG1
MAG2
MAN3

- Molecule 3: alpha-D-mannopyranose-(1-4)-2-acetamido-2-deoxy-beta-D-glucopyranose-(1-4)-2-acetamido-2-deoxy-beta-D-glucopyranose

Chain F:  67% 33%MAG1
MAG2
MAN3

4 Data and refinement statistics

Property	Value	Source
Space group	I 2 2 2	Depositor
Cell constants a, b, c, α , β , γ	121.15Å 132.05Å 180.76Å 90.00° 90.00° 90.00°	Depositor
Resolution (Å)	19.86 – 2.45 19.86 – 2.45	Depositor EDS
% Data completeness (in resolution range)	100.0 (19.86-2.45) 99.8 (19.86-2.45)	Depositor EDS
R_{merge}	0.10	Depositor
R_{sym}	(Not available)	Depositor
$\langle I/\sigma(I) \rangle$ ¹	2.63 (at 2.44Å)	Xtrriage
Refinement program	REFMAC 5.5.0088	Depositor
R, R_{free}	0.163 , 0.219 0.182 , 0.231	Depositor DCC
R_{free} test set	2707 reflections (5.07%)	wwPDB-VP
Wilson B-factor (Å ²)	35.4	Xtrriage
Anisotropy	0.062	Xtrriage
Bulk solvent k_{sol} (e/Å ³), B_{sol} (Å ²)	0.35 , 42.5	EDS
L-test for twinning ²	$\langle L \rangle = 0.49$, $\langle L^2 \rangle = 0.32$	Xtrriage
Estimated twinning fraction	No twinning to report.	Xtrriage
F_o, F_c correlation	0.95	EDS
Total number of atoms	9793	wwPDB-VP
Average B, all atoms (Å ²)	30.0	wwPDB-VP

Xtrriage's analysis on translational NCS is as follows: *The largest off-origin peak in the Patterson function is 2.92% of the height of the origin peak. No significant pseudotranslation is detected.*

¹Intensities estimated from amplitudes.

²Theoretical values of $\langle |L| \rangle$, $\langle L^2 \rangle$ for acentric reflections are 0.5, 0.333 respectively for untwinned datasets, and 0.375, 0.2 for perfectly twinned datasets.

5 Model quality [i](#)

5.1 Standard geometry [i](#)

Bond lengths and bond angles in the following residue types are not validated in this section: NAG, COH, ACD, MAN, EDO, BOG

The Z score for a bond length (or angle) is the number of standard deviations the observed value is removed from the expected value. A bond length (or angle) with $|Z| > 5$ is considered an outlier worth inspection. RMSZ is the root-mean-square of all Z scores of the bond lengths (or angles).

Mol	Chain	Bond lengths		Bond angles	
		RMSZ	# Z >5	RMSZ	# Z >5
1	A	0.64	0/4602	0.64	1/6250 (0.0%)
1	B	0.60	0/4593	0.64	1/6235 (0.0%)
All	All	0.62	0/9195	0.64	2/12485 (0.0%)

There are no bond length outliers.

All (2) bond angle outliers are listed below:

Mol	Chain	Res	Type	Atoms	Z	Observed(°)	Ideal(°)
1	A	531	LEU	CA-CB-CG	6.01	129.12	115.30
1	B	531	LEU	CA-CB-CG	5.02	126.84	115.30

There are no chirality outliers.

There are no planarity outliers.

5.2 Too-close contacts [i](#)

In the following table, the Non-H and H(model) columns list the number of non-hydrogen atoms and hydrogen atoms in the chain respectively. The H(added) column lists the number of hydrogen atoms added and optimized by MolProbity. The Clashes column lists the number of clashes within the asymmetric unit, whereas Symm-Clashes lists symmetry-related clashes.

Mol	Chain	Non-H	H(model)	H(added)	Clashes	Symm-Clashes
1	A	4459	0	4294	44	0
1	B	4453	0	4289	38	0
2	C	28	0	25	1	0
2	E	28	0	25	0	0
3	D	39	0	34	5	0
3	F	39	0	34	4	0
4	A	28	0	42	5	0

Continued on next page...

Continued from previous page...

Mol	Chain	Non-H	H(model)	H(added)	Clashes	Symm-Clashes
4	B	28	0	42	1	0
5	A	22	0	31	3	0
5	B	22	0	31	7	0
6	A	43	0	30	3	0
6	B	43	0	30	2	0
7	A	14	0	13	1	0
7	B	14	0	13	1	0
8	A	20	0	28	0	0
9	A	267	0	0	6	0
9	B	246	0	0	4	0
All	All	9793	0	8961	88	0

The all-atom clashscore is defined as the number of clashes found per 1000 atoms (including hydrogen atoms). The all-atom clashscore for this structure is 5.

All (88) close contacts within the same asymmetric unit are listed below, sorted by their clash magnitude.

Atom-1	Atom-2	Interatomic distance (Å)	Clash overlap (Å)
1:B:216:ARG:NH1	3:F:2:NAG:H83	1.93	0.84
1:A:216:ARG:HH11	3:D:2:NAG:H83	1.47	0.79
1:A:243:LYS:HZ1	4:A:707:EDO:H12	1.46	0.78
1:B:87:ASN:C	1:B:87:ASN:HD22	1.85	0.78
1:B:176:GLU:HG3	9:B:1028:HOH:O	1.85	0.75
1:B:216:ARG:HG2	3:F:2:NAG:H81	1.67	0.74
1:B:87:ASN:C	1:B:87:ASN:ND2	2.40	0.74
6:A:709:COH:HHA	6:A:709:COH:HBA2	1.71	0.72
1:B:216:ARG:HH11	3:F:2:NAG:H83	1.54	0.71
1:A:243:LYS:NZ	4:A:707:EDO:H12	2.05	0.71
1:B:385:TYR:OH	5:B:708:ACD:H131	1.91	0.70
6:A:709:COH:HMB1	6:A:709:COH:HBB1	1.73	0.70
1:A:472:LEU:HD21	1:A:524:GLU:HG3	1.73	0.69
9:A:1066:HOH:O	2:C:2:NAG:H2	1.94	0.66
1:A:216:ARG:HD3	3:D:2:NAG:C8	2.26	0.65
1:A:216:ARG:HD3	3:D:2:NAG:H81	1.79	0.65
1:B:87:ASN:ND2	1:B:87:ASN:O	2.30	0.64
1:A:532:LYS:HE2	9:A:1033:HOH:O	2.00	0.62
1:A:253:LYS:NZ	9:A:802:HOH:O	2.35	0.60
1:A:382:ASN:O	1:A:386:HIS:HD2	1.85	0.59
1:B:413:ILE:HG12	7:B:710:NAG:H61	1.83	0.59
1:A:413:ILE:HG12	7:A:710:NAG:H61	1.85	0.59
1:A:530[B]:SER:OG	5:A:708:ACD:H42	2.02	0.58

Continued on next page...

Continued from previous page...

Atom-1	Atom-2	Interatomic distance (Å)	Clash overlap (Å)
5:B:708:ACD:H72	5:B:708:ACD:H11	1.87	0.57
1:B:533:GLY:HA3	5:B:708:ACD:H202	1.87	0.57
1:B:472:LEU:HD22	1:B:520:GLU:OE2	2.05	0.56
1:A:289:GLN:HG2	1:A:292:PHE:CE1	2.41	0.56
1:A:272:GLU:H	4:A:707:EDO:H21	1.73	0.54
1:B:533:GLY:HA3	5:B:708:ACD:H182	1.89	0.54
1:A:40:PRO:O	1:A:68:ASN:HB3	2.07	0.53
1:A:484:GLU:HG2	1:A:485:LYS:H	1.73	0.53
1:A:216:ARG:HH11	3:D:2:NAG:C8	2.18	0.53
4:B:706:EDO:H22	9:B:997:HOH:O	2.09	0.53
6:A:709:COH:HBA2	6:A:709:COH:CHA	2.37	0.52
1:A:294:LEU:HG	1:A:295:VAL:HG22	1.91	0.52
1:B:451:SER:O	1:B:455:SER:HB2	2.09	0.52
1:A:33:HIS:N	9:A:806:HOH:O	2.43	0.52
1:B:389:PRO:HB2	1:B:434:VAL:HA	1.92	0.51
1:A:385:TYR:OH	5:A:708:ACD:H31	2.10	0.51
1:A:414:LEU:HD11	1:A:419:LEU:HD12	1.91	0.51
1:B:414:LEU:HD11	1:B:419:LEU:HD12	1.93	0.51
5:B:708:ACD:H72	5:B:708:ACD:C11	2.41	0.51
1:A:290:GLU:HG3	9:A:810:HOH:O	2.11	0.51
1:A:222:ARG:NH1	9:A:808:HOH:O	2.44	0.50
1:A:382:ASN:O	1:A:386:HIS:CD2	2.64	0.50
1:A:216:ARG:NH1	3:D:2:NAG:H83	2.21	0.49
1:B:382:ASN:O	1:B:386:HIS:HD2	1.95	0.49
1:B:438:ARG:HD2	9:B:866:HOH:O	2.13	0.49
1:A:543:GLN:O	1:B:137:LYS:HE2	2.13	0.49
1:A:484:GLU:HG2	1:A:485:LYS:N	2.27	0.48
1:A:162:PRO:HA	4:A:701:EDO:H22	1.95	0.48
1:B:533:GLY:HA3	5:B:708:ACD:C18	2.44	0.48
1:A:196:MET:HG2	1:A:429:GLN:HG2	1.96	0.48
1:B:230:LEU:HD13	1:B:233:ILE:HD12	1.95	0.47
1:A:93:LEU:HD13	1:A:355:TYR:CZ	2.50	0.47
1:B:198:PHE:HZ	1:B:352:LEU:HD21	1.79	0.47
1:A:352:LEU:O	4:A:702:EDO:H11	2.15	0.47
1:B:289:GLN:HG3	1:B:292:PHE:CE1	2.50	0.47
1:B:352:LEU:HD22	1:B:518:PHE:CE2	2.50	0.46
1:A:198:PHE:CZ	1:A:352:LEU:HD21	2.51	0.45
1:A:295:VAL:HG23	1:A:298:LEU:HD12	1.98	0.45
1:B:534:LEU:HD11	5:B:708:ACD:H15	1.98	0.45
1:B:388:HIS:N	1:B:389:PRO:CD	2.80	0.45
1:A:213:ASP:HB2	1:A:222:ARG:HG3	1.98	0.45

Continued on next page...

Continued from previous page...

Atom-1	Atom-2	Interatomic distance (Å)	Clash overlap (Å)
1:A:204:HIS:CD2	1:A:292:PHE:CE2	3.04	0.44
1:B:532:LYS:HE2	9:B:1004:HOH:O	2.16	0.44
1:A:193:GLY:O	1:A:581:ASN:HA	2.18	0.43
1:B:198:PHE:CZ	1:B:352:LEU:HD21	2.52	0.43
1:A:139:TRP:CZ2	1:B:229:ASP:HB3	2.54	0.43
1:B:71:THR:HA	1:B:72:PRO:HD3	1.90	0.42
1:A:198:PHE:HZ	1:A:352:LEU:HD21	1.84	0.42
1:B:148:TYR:CZ	1:B:221:THR:HB	2.54	0.42
1:B:484:GLU:OE1	1:B:487:MET:HB2	2.19	0.42
1:B:216:ARG:HH11	3:F:2:NAG:C8	2.28	0.42
1:A:306:LEU:C	1:A:306:LEU:HD23	2.39	0.42
1:B:234:TYR:CE2	1:B:333:ARG:HG3	2.55	0.42
1:B:289:GLN:HG3	1:B:292:PHE:CD1	2.54	0.41
1:B:295:VAL:HG11	6:B:709:COH:HBB2	2.02	0.41
1:A:83:LYS:HA	1:A:84:PRO:HD3	1.90	0.41
1:B:295:VAL:HG11	6:B:709:COH:CBB	2.50	0.41
1:B:472:LEU:HD21	1:B:524:GLU:HG3	2.03	0.41
1:B:100:TRP:CE3	1:B:357:PHE:HB2	2.56	0.41
5:A:708:ACD:H41	5:A:708:ACD:H71	1.76	0.40
1:A:181:VAL:HG21	1:A:491:LEU:HD21	2.03	0.40
1:A:126:SER:HA	1:A:127:PRO:C	2.41	0.40
1:A:171:LEU:HB3	1:A:172:PRO:HD2	2.04	0.40
1:A:550:PHE:O	1:A:555:GLY:HA3	2.22	0.40

There are no symmetry-related clashes.

5.3 Torsion angles [i](#)

5.3.1 Protein backbone [i](#)

In the following table, the Percentiles column shows the percent Ramachandran outliers of the chain as a percentile score with respect to all X-ray entries followed by that with respect to entries of similar resolution.

The Analysed column shows the number of residues for which the backbone conformation was analysed, and the total number of residues.

Mol	Chain	Analysed	Favoured	Allowed	Outliers	Percentiles
1	A	554/592 (94%)	540 (98%)	11 (2%)	3 (0%)	25 32
1	B	553/592 (93%)	540 (98%)	13 (2%)	0	100 100

Continued on next page...

Continued from previous page...

Mol	Chain	Analysed	Favoured	Allowed	Outliers	Percentiles	
All	All	1107/1184 (94%)	1080 (98%)	24 (2%)	3 (0%)	37	45

All (3) Ramachandran outliers are listed below:

Mol	Chain	Res	Type
1	A	121	SER
1	A	120	ARG
1	A	122	TYR

5.3.2 Protein sidechains [i](#)

In the following table, the Percentiles column shows the percent sidechain outliers of the chain as a percentile score with respect to all X-ray entries followed by that with respect to entries of similar resolution.

The Analysed column shows the number of residues for which the sidechain conformation was analysed, and the total number of residues.

Mol	Chain	Analysed	Rotameric	Outliers	Percentiles	
1	A	482/530 (91%)	470 (98%)	12 (2%)	42	58
1	B	481/530 (91%)	471 (98%)	10 (2%)	48	64
All	All	963/1060 (91%)	941 (98%)	22 (2%)	45	61

All (22) residues with a non-rotameric sidechain are listed below:

Mol	Chain	Res	Type
1	A	81	LEU
1	A	186	GLU
1	A	232	HIS
1	A	282	ASN
1	A	289	GLN
1	A	295	VAL
1	A	385	TYR
1	A	408	LEU
1	A	428	ARG
1	A	438	ARG
1	A	484	GLU
1	A	556	PHE
1	B	46	GLU
1	B	87	ASN
1	B	101	ASN

Continued on next page...

Continued from previous page...

Mol	Chain	Res	Type
1	B	232	HIS
1	B	239	ASP
1	B	289	GLN
1	B	295	VAL
1	B	385	TYR
1	B	442	ILE
1	B	455	SER

Sometimes sidechains can be flipped to improve hydrogen bonding and reduce clashes. All (2) such sidechains are listed below:

Mol	Chain	Res	Type
1	B	87	ASN
1	B	282	ASN

5.3.3 RNA [i](#)

There are no RNA molecules in this entry.

5.4 Non-standard residues in protein, DNA, RNA chains [i](#)

There are no non-standard protein/DNA/RNA residues in this entry.

5.5 Carbohydrates [i](#)

10 monosaccharides are modelled in this entry.

In the following table, the Counts columns list the number of bonds (or angles) for which Mogul statistics could be retrieved, the number of bonds (or angles) that are observed in the model and the number of bonds (or angles) that are defined in the Chemical Component Dictionary. The Link column lists molecule types, if any, to which the group is linked. The Z score for a bond length (or angle) is the number of standard deviations the observed value is removed from the expected value. A bond length (or angle) with $|Z| > 2$ is considered an outlier worth inspection. RMSZ is the root-mean-square of all Z scores of the bond lengths (or angles).

Mol	Type	Chain	Res	Link	Bond lengths			Bond angles		
					Counts	RMSZ	# Z > 2	Counts	RMSZ	# Z > 2
2	NAG	C	1	1,2	14,14,15	1.50	1 (7%)	17,19,21	1.68	4 (23%)
2	NAG	C	2	2	14,14,15	0.74	0	17,19,21	1.55	2 (11%)
3	NAG	D	1	1,3	14,14,15	1.87	1 (7%)	17,19,21	1.84	4 (23%)
3	NAG	D	2	3	14,14,15	0.59	0	17,19,21	1.31	2 (11%)

Mol	Type	Chain	Res	Link	Bond lengths			Bond angles		
					Counts	RMSZ	# Z > 2	Counts	RMSZ	# Z > 2
3	MAN	D	3	3	11,11,12	0.55	0	15,15,17	1.59	1 (6%)
2	NAG	E	1	1,2	14,14,15	1.63	1 (7%)	17,19,21	1.59	5 (29%)
2	NAG	E	2	2	14,14,15	0.71	0	17,19,21	1.84	3 (17%)
3	NAG	F	1	1,3	14,14,15	0.50	0	17,19,21	0.87	1 (5%)
3	NAG	F	2	3	14,14,15	0.63	0	17,19,21	0.99	1 (5%)
3	MAN	F	3	3	11,11,12	0.81	0	15,15,17	1.00	1 (6%)

In the following table, the Chirals column lists the number of chiral outliers, the number of chiral centers analysed, the number of these observed in the model and the number defined in the Chemical Component Dictionary. Similar counts are reported in the Torsion and Rings columns. '-' means no outliers of that kind were identified.

Mol	Type	Chain	Res	Link	Chirals	Torsions	Rings
2	NAG	C	1	1,2	2/2/5/7	1/6/23/26	0/1/1/1
2	NAG	C	2	2	-	0/6/23/26	0/1/1/1
3	NAG	D	1	1,3	-	2/6/23/26	0/1/1/1
3	NAG	D	2	3	-	4/6/23/26	0/1/1/1
3	MAN	D	3	3	-	2/2/19/22	1/1/1/1
2	NAG	E	1	1,2	-	4/6/23/26	0/1/1/1
2	NAG	E	2	2	1/1/5/7	0/6/23/26	0/1/1/1
3	NAG	F	1	1,3	-	0/6/23/26	0/1/1/1
3	NAG	F	2	3	-	3/6/23/26	0/1/1/1
3	MAN	F	3	3	-	2/2/19/22	0/1/1/1

All (3) bond length outliers are listed below:

Mol	Chain	Res	Type	Atoms	Z	Observed(Å)	Ideal(Å)
3	D	1	NAG	O5-C1	-6.53	1.32	1.43
2	E	1	NAG	O5-C1	-5.73	1.34	1.43
2	C	1	NAG	O5-C1	-5.16	1.35	1.43

All (24) bond angle outliers are listed below:

Mol	Chain	Res	Type	Atoms	Z	Observed(°)	Ideal(°)
3	D	3	MAN	C1-O5-C5	5.22	119.19	112.19
3	D	1	NAG	C1-O5-C5	-5.19	105.23	112.19
2	C	1	NAG	O5-C1-C2	4.53	118.31	111.29
2	C	2	NAG	C4-C3-C2	4.45	117.54	111.02
2	E	2	NAG	C3-C4-C5	3.97	117.43	110.23

Continued on next page...

Continued from previous page...

Mol	Chain	Res	Type	Atoms	Z	Observed(°)	Ideal(°)
2	E	2	NAG	C4-C3-C2	3.89	116.72	111.02
2	E	2	NAG	C1-O5-C5	3.86	117.35	112.19
2	E	1	NAG	C3-C4-C5	3.53	116.64	110.23
3	D	2	NAG	O5-C1-C2	-3.29	106.21	111.29
3	D	1	NAG	O5-C5-C6	2.95	113.40	107.66
2	E	1	NAG	O5-C1-C2	-2.89	106.81	111.29
2	C	1	NAG	O5-C5-C6	2.53	112.58	107.66
3	D	1	NAG	C2-N2-C7	-2.45	119.62	122.90
3	D	2	NAG	C4-C3-C2	2.44	114.59	111.02
3	F	1	NAG	C1-O5-C5	2.38	115.38	112.19
3	D	1	NAG	C1-C2-N2	-2.30	106.80	110.43
2	E	1	NAG	C1-O5-C5	-2.29	109.11	112.19
2	E	1	NAG	C6-C5-C4	-2.16	107.71	113.02
3	F	2	NAG	C4-C3-C2	2.15	114.16	111.02
2	C	1	NAG	C2-N2-C7	-2.14	120.03	122.90
2	E	1	NAG	C1-C2-N2	2.14	113.80	110.43
2	C	1	NAG	C4-C3-C2	-2.08	107.97	111.02
2	C	2	NAG	C2-N2-C7	2.08	125.68	122.90
3	F	3	MAN	O5-C5-C6	2.03	111.61	107.66

All (3) chirality outliers are listed below:

Mol	Chain	Res	Type	Atom
2	C	1	NAG	C5
2	C	1	NAG	C1
2	E	2	NAG	C1

All (18) torsion outliers are listed below:

Mol	Chain	Res	Type	Atoms
3	D	3	MAN	C4-C5-C6-O6
3	D	3	MAN	O5-C5-C6-O6
2	E	1	NAG	O5-C5-C6-O6
2	C	1	NAG	O5-C5-C6-O6
2	E	1	NAG	C4-C5-C6-O6
3	D	2	NAG	C4-C5-C6-O6
3	D	2	NAG	C8-C7-N2-C2
3	D	2	NAG	O7-C7-N2-C2
3	F	2	NAG	C8-C7-N2-C2
3	F	2	NAG	O7-C7-N2-C2
3	D	2	NAG	O5-C5-C6-O6
3	D	1	NAG	O5-C5-C6-O6

Continued on next page...

Continued from previous page...

Mol	Chain	Res	Type	Atoms
3	F	3	MAN	C4-C5-C6-O6
2	E	1	NAG	C8-C7-N2-C2
2	E	1	NAG	O7-C7-N2-C2
3	D	1	NAG	C4-C5-C6-O6
3	F	3	MAN	O5-C5-C6-O6
3	F	2	NAG	C4-C5-C6-O6

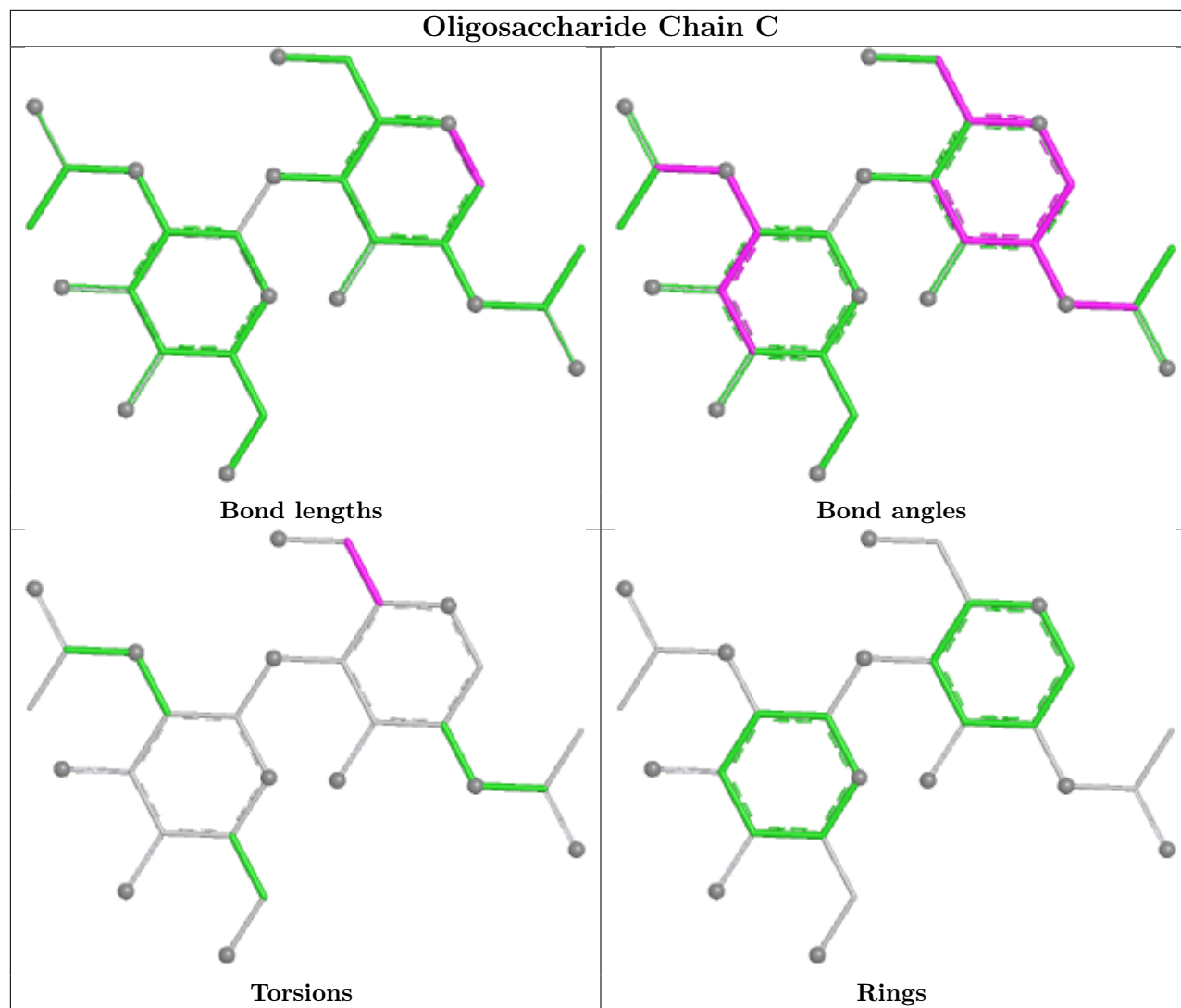
All (1) ring outliers are listed below:

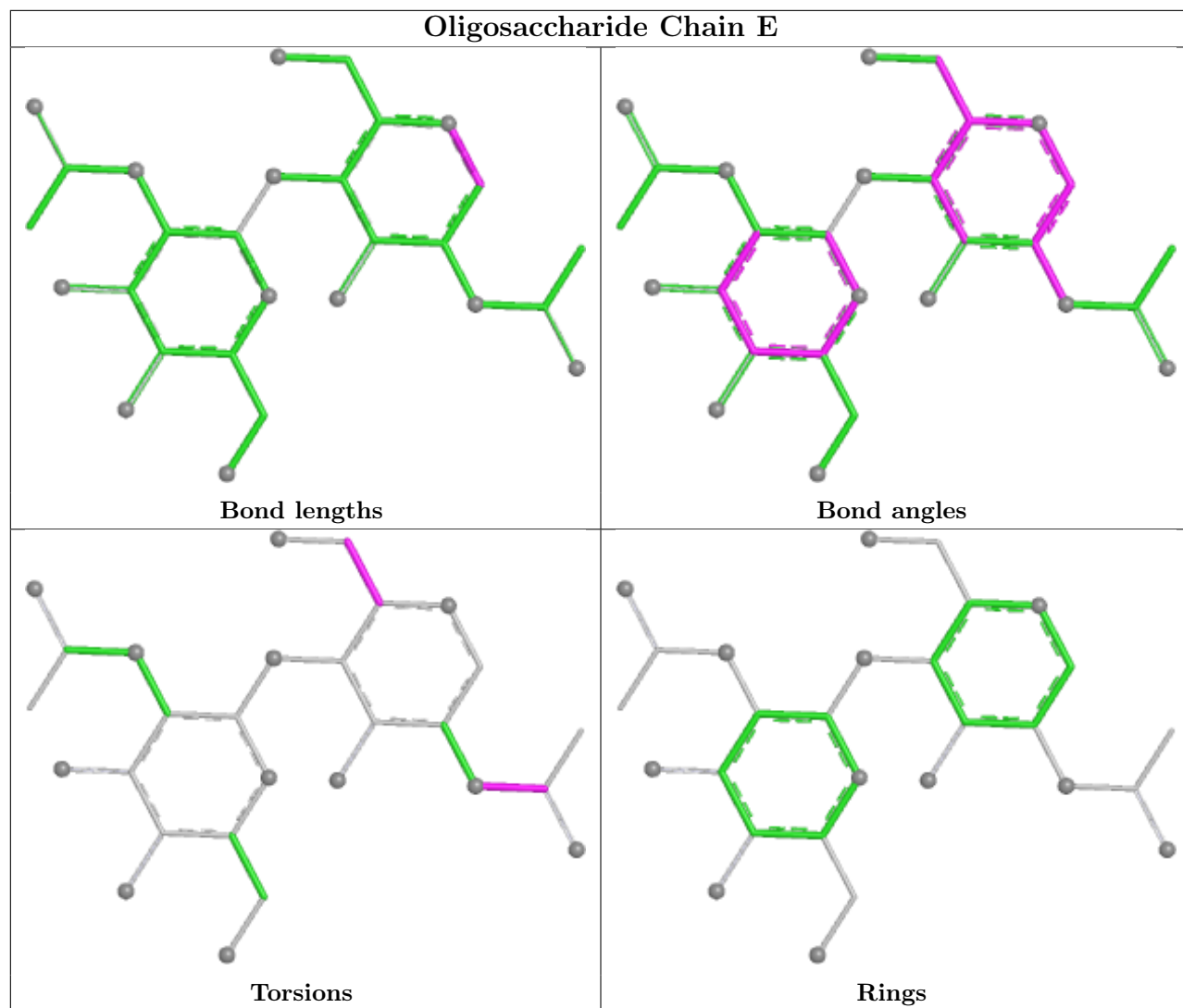
Mol	Chain	Res	Type	Atoms
3	D	3	MAN	C1-C2-C3-C4-C5-O5

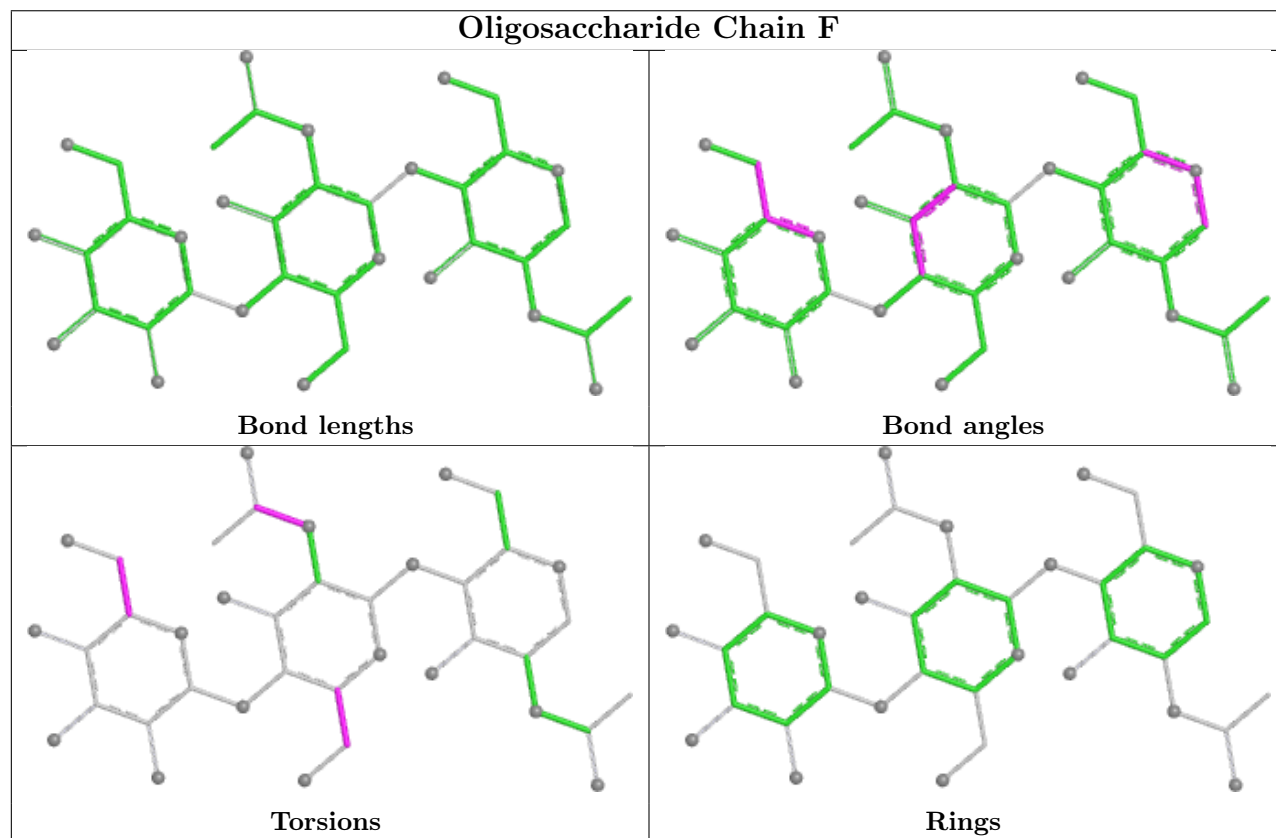
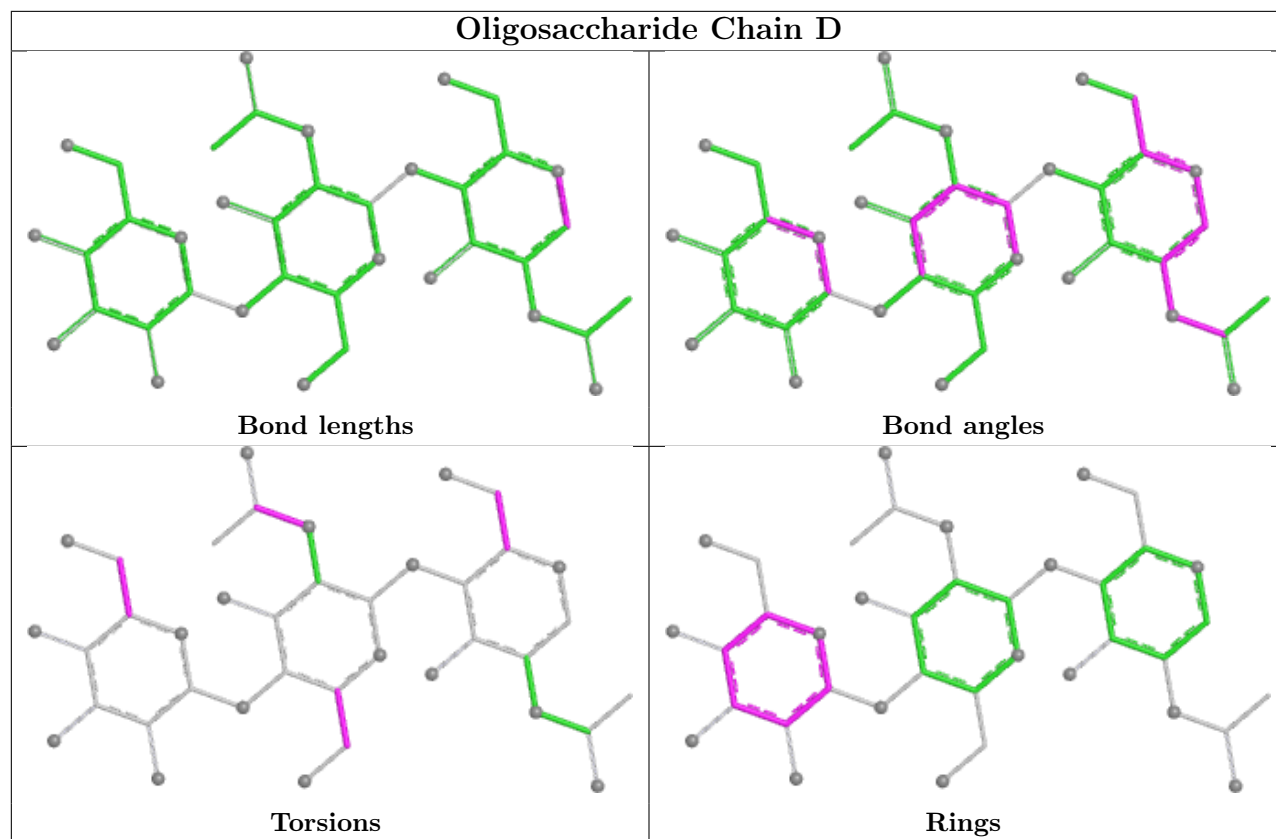
3 monomers are involved in 10 short contacts:

Mol	Chain	Res	Type	Clashes	Symm-Clashes
3	D	2	NAG	5	0
2	C	2	NAG	1	0
3	F	2	NAG	4	0

The following is a two-dimensional graphical depiction of Mogul quality analysis of bond lengths, bond angles, torsion angles, and ring geometry for oligosaccharide.







5.6 Ligand geometry

21 ligands are modelled in this entry.

In the following table, the Counts columns list the number of bonds (or angles) for which Mogul statistics could be retrieved, the number of bonds (or angles) that are observed in the model and the number of bonds (or angles) that are defined in the Chemical Component Dictionary. The Link column lists molecule types, if any, to which the group is linked. The Z score for a bond length (or angle) is the number of standard deviations the observed value is removed from the expected value. A bond length (or angle) with $|Z| > 2$ is considered an outlier worth inspection. RMSZ is the root-mean-square of all Z scores of the bond lengths (or angles).

Mol	Type	Chain	Res	Link	Bond lengths			Bond angles		
					Counts	RMSZ	# Z > 2	Counts	RMSZ	# Z > 2
4	EDO	B	704	-	3,3,3	0.44	0	2,2,2	0.36	0
4	EDO	A	701	-	3,3,3	0.60	0	2,2,2	0.28	0
4	EDO	B	702	-	3,3,3	0.31	0	2,2,2	0.53	0
5	ACD	B	708	-	21,21,21	0.62	0	21,21,21	0.71	0
4	EDO	A	706	-	3,3,3	0.63	0	2,2,2	0.07	0
4	EDO	B	706	-	3,3,3	0.59	0	2,2,2	0.34	0
4	EDO	A	705	-	3,3,3	0.43	0	2,2,2	0.59	0
4	EDO	A	704	-	3,3,3	0.55	0	2,2,2	0.26	0
5	ACD	A	708	-	21,21,21	0.53	0	21,21,21	0.80	0
4	EDO	B	701	-	3,3,3	0.55	0	2,2,2	0.24	0
4	EDO	A	707	-	3,3,3	0.41	0	2,2,2	0.64	0
6	COH	A	709	1	47,50,50	1.55	8 (17%)	55,82,82	1.54	8 (14%)
4	EDO	A	702	-	3,3,3	0.57	0	2,2,2	0.29	0
6	COH	B	709	1	47,50,50	1.65	10 (21%)	55,82,82	1.67	10 (18%)
4	EDO	B	707	-	3,3,3	0.27	0	2,2,2	0.66	0
8	BOG	A	711	-	20,20,20	0.52	0	25,25,25	0.57	0
4	EDO	B	705	-	3,3,3	0.36	0	2,2,2	0.67	0
4	EDO	A	703	-	3,3,3	0.52	0	2,2,2	0.49	0
7	NAG	B	710	1	14,14,15	1.45	1 (7%)	17,19,21	2.00	2 (11%)
7	NAG	A	710	1	14,14,15	1.78	1 (7%)	17,19,21	2.08	4 (23%)
4	EDO	B	703	-	3,3,3	0.44	0	2,2,2	0.65	0

In the following table, the Chirals column lists the number of chiral outliers, the number of chiral centers analysed, the number of these observed in the model and the number defined in the Chemical Component Dictionary. Similar counts are reported in the Torsion and Rings columns. '-' means no outliers of that kind were identified.

Mol	Type	Chain	Res	Link	Chirals	Torsions	Rings
4	EDO	B	704	-	-	1/1/1/1	-
4	EDO	A	701	-	-	0/1/1/1	-
4	EDO	B	702	-	-	1/1/1/1	-

Continued on next page...

Continued from previous page...

Mol	Type	Chain	Res	Link	Chirals	Torsions	Rings
5	ACD	B	708	-	-	10/19/19/19	-
4	EDO	A	706	-	-	0/1/1/1	-
4	EDO	B	706	-	-	0/1/1/1	-
4	EDO	A	705	-	-	0/1/1/1	-
4	EDO	A	704	-	-	0/1/1/1	-
5	ACD	A	708	-	-	10/19/19/19	-
4	EDO	B	701	-	-	1/1/1/1	-
4	EDO	A	707	-	-	0/1/1/1	-
6	COH	A	709	1	-	5/14/54/54	-
4	EDO	A	702	-	-	0/1/1/1	-
4	EDO	B	707	-	-	1/1/1/1	-
6	COH	B	709	1	1/1/3/9	4/14/54/54	-
8	BOG	A	711	-	-	4/11/31/31	0/1/1/1
4	EDO	B	705	-	-	0/1/1/1	-
4	EDO	A	703	-	-	1/1/1/1	-
7	NAG	B	710	1	-	2/6/23/26	0/1/1/1
7	NAG	A	710	1	-	2/6/23/26	0/1/1/1
4	EDO	B	703	-	-	0/1/1/1	-

All (20) bond length outliers are listed below:

Mol	Chain	Res	Type	Atoms	Z	Observed(Å)	Ideal(Å)
7	A	710	NAG	O5-C1	-6.21	1.33	1.43
6	B	709	COH	C3D-C2D	5.37	1.53	1.37
6	A	709	COH	C3D-C2D	5.32	1.53	1.37
7	B	710	NAG	O5-C1	-5.04	1.35	1.43
6	B	709	COH	CO-NC	3.34	2.11	1.96
6	B	709	COH	CO-ND	3.16	2.12	1.97
6	A	709	COH	CO-NA	3.16	2.10	1.96
6	B	709	COH	CO-NA	3.06	2.10	1.96
6	A	709	COH	CAB-C3B	3.04	1.55	1.47
6	B	709	COH	CAB-C3B	2.78	1.54	1.47
6	B	709	COH	CMA-C3A	2.75	1.56	1.50
6	A	709	COH	CAC-C3C	2.72	1.54	1.47
6	B	709	COH	CAC-C3C	2.62	1.54	1.47
6	A	709	COH	CMA-C3A	2.43	1.55	1.50
6	A	709	COH	CHA-C1A	2.31	1.40	1.34
6	A	709	COH	CO-NC	2.27	2.06	1.96
6	A	709	COH	CMC-C2C	2.19	1.55	1.50
6	B	709	COH	CMB-C2B	2.18	1.55	1.50
6	B	709	COH	CAA-C2A	2.09	1.56	1.51

Continued on next page...

Continued from previous page...

Mol	Chain	Res	Type	Atoms	Z	Observed(Å)	Ideal(Å)
6	B	709	COH	CMC-C2C	2.02	1.54	1.50

All (24) bond angle outliers are listed below:

Mol	Chain	Res	Type	Atoms	Z	Observed(°)	Ideal(°)
7	B	710	NAG	C1-O5-C5	-6.15	103.94	112.19
7	A	710	NAG	C1-O5-C5	-6.10	104.01	112.19
6	B	709	COH	C2B-C1B-NB	-5.09	106.92	110.88
7	B	710	NAG	O5-C5-C6	4.70	116.81	107.66
6	B	709	COH	CBD-CAD-C3D	-4.24	105.41	112.54
7	A	710	NAG	O5-C5-C6	3.80	115.06	107.66
6	A	709	COH	C2B-C1B-NB	-3.75	107.96	110.88
6	A	709	COH	C3A-C4A-NA	-3.73	107.08	110.96
6	B	709	COH	C2C-C1C-NC	-3.66	107.16	110.96
6	A	709	COH	C1A-NA-C4A	3.62	109.72	105.12
6	A	709	COH	C2C-C1C-NC	-3.19	107.64	110.96
6	A	709	COH	C2A-C1A-NA	-3.18	106.69	110.57
7	A	710	NAG	O5-C1-C2	-3.01	106.64	111.29
6	A	709	COH	C4C-NC-C1C	2.98	108.91	105.12
6	B	709	COH	C4B-NB-C1B	2.82	109.27	105.11
6	B	709	COH	C4C-NC-C1C	2.80	108.68	105.12
6	B	709	COH	C3C-C2C-C1C	2.58	108.34	106.41
6	B	709	COH	C3A-C4A-NA	-2.52	108.34	110.96
6	B	709	COH	C1A-NA-C4A	2.47	108.27	105.12
7	A	710	NAG	C2-N2-C7	-2.38	119.70	122.90
6	A	709	COH	C3C-C2C-C1C	2.31	108.15	106.41
6	A	709	COH	C1D-C2D-C3D	-2.24	105.44	107.00
6	B	709	COH	CBA-CAA-C2A	-2.11	106.70	112.53
6	B	709	COH	C1D-C2D-C3D	-2.08	105.55	107.00

All (1) chirality outliers are listed below:

Mol	Chain	Res	Type	Atom
6	B	709	COH	NB

All (42) torsion outliers are listed below:

Mol	Chain	Res	Type	Atoms
5	B	708	ACD	C11-C10-C9-C8
5	B	708	ACD	C9-C10-C11-C12
7	B	710	NAG	O5-C5-C6-O6
6	A	709	COH	C1A-C2A-CAA-CBA

Continued on next page...

Continued from previous page...

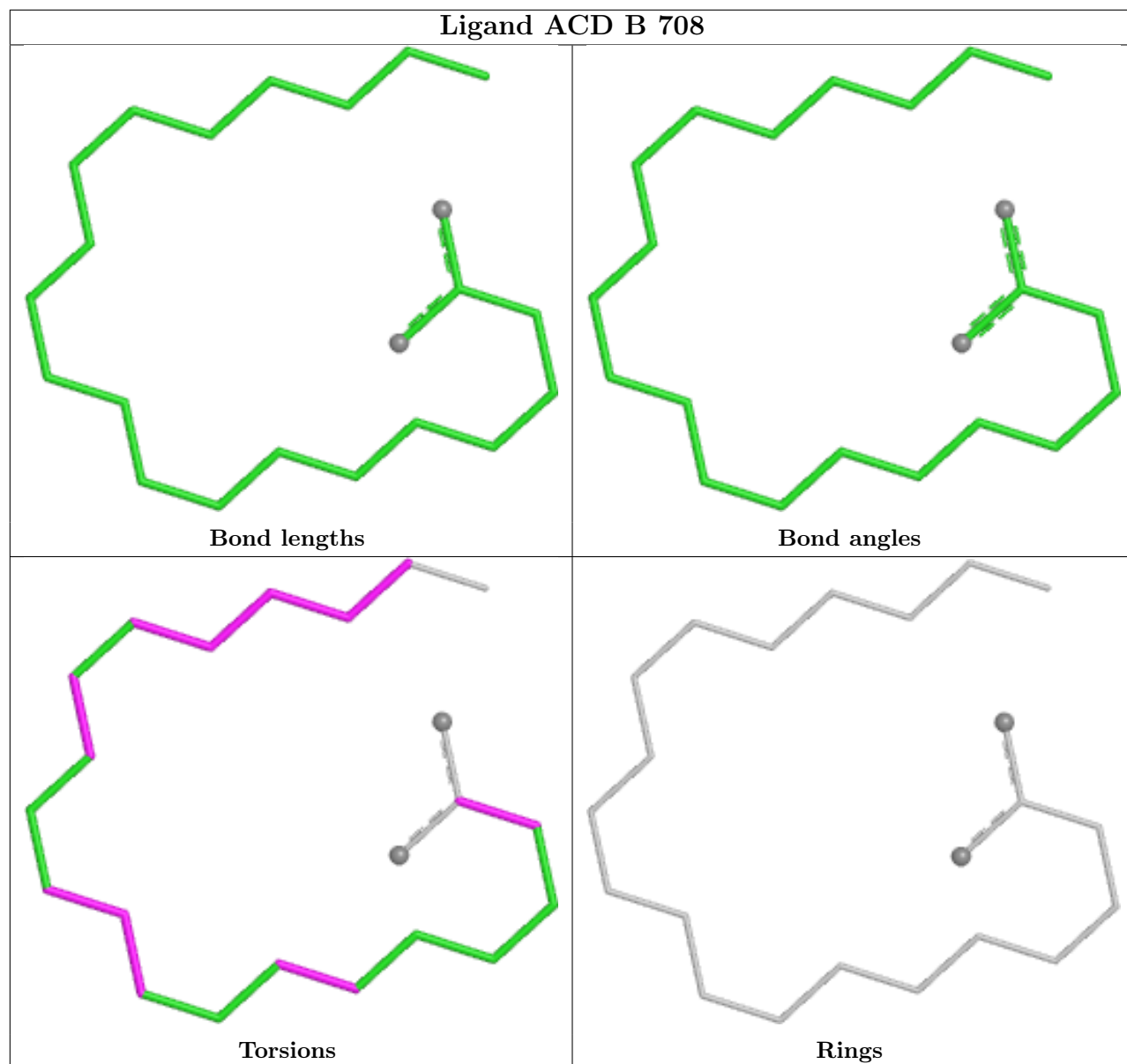
Mol	Chain	Res	Type	Atoms
7	B	710	NAG	C4-C5-C6-O6
7	A	710	NAG	C4-C5-C6-O6
7	A	710	NAG	O5-C5-C6-O6
6	A	709	COH	C3A-C2A-CAA-CBA
5	A	708	ACD	C16-C17-C18-C19
6	B	709	COH	C2B-C3B-CAB-CBB
5	B	708	ACD	C15-C16-C17-C18
8	A	711	BOG	C3'-C4'-C5'-C6'
5	A	708	ACD	C17-C18-C19-C20
5	B	708	ACD	C17-C18-C19-C20
6	A	709	COH	C2A-CAA-CBA-CGA
5	A	708	ACD	C9-C10-C11-C12
5	A	708	ACD	C11-C12-C13-C14
5	A	708	ACD	C12-C13-C14-C15
5	B	708	ACD	C5-C6-C7-C8
5	B	708	ACD	C12-C13-C14-C15
8	A	711	BOG	C4'-C5'-C6'-C7'
4	B	704	EDO	O1-C1-C2-O2
8	A	711	BOG	C2'-C3'-C4'-C5'
8	A	711	BOG	O1-C1'-C2'-C3'
4	B	702	EDO	O1-C1-C2-O2
6	B	709	COH	C4B-C3B-CAB-CBB
5	B	708	ACD	C16-C17-C18-C19
4	B	701	EDO	O1-C1-C2-O2
5	A	708	ACD	O1-C1-C2-C3
6	A	709	COH	CAA-CBA-CGA-O1A
5	B	708	ACD	O1-C1-C2-C3
5	A	708	ACD	C6-C7-C8-C9
5	B	708	ACD	O2-C1-C2-C3
4	A	703	EDO	O1-C1-C2-O2
5	A	708	ACD	C14-C15-C16-C17
6	A	709	COH	CAA-CBA-CGA-O2A
6	B	709	COH	CAA-CBA-CGA-O1A
5	A	708	ACD	O2-C1-C2-C3
6	B	709	COH	CAA-CBA-CGA-O2A
5	B	708	ACD	C14-C15-C16-C17
4	B	707	EDO	O1-C1-C2-O2
5	A	708	ACD	C1-C2-C3-C4

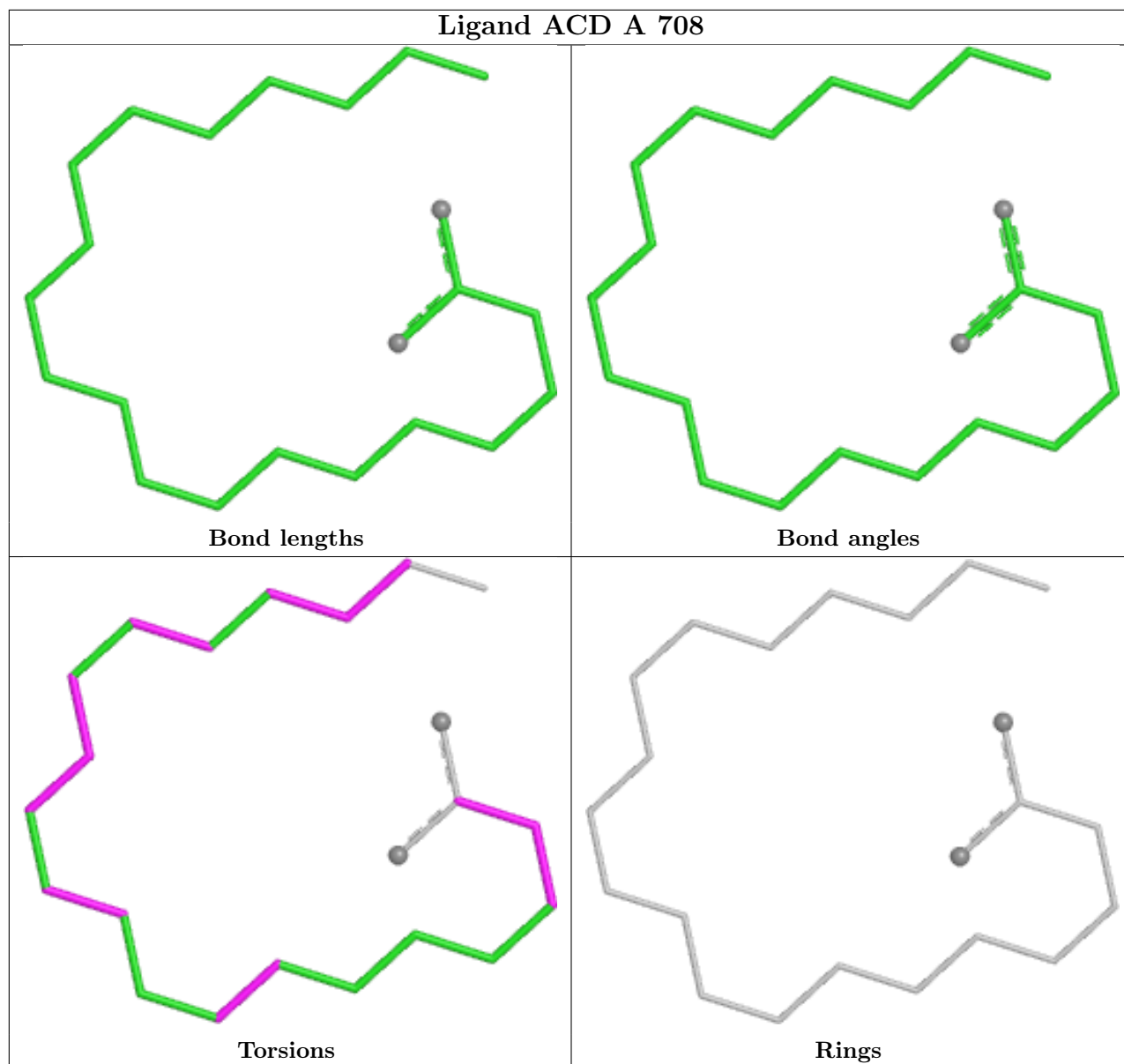
There are no ring outliers.

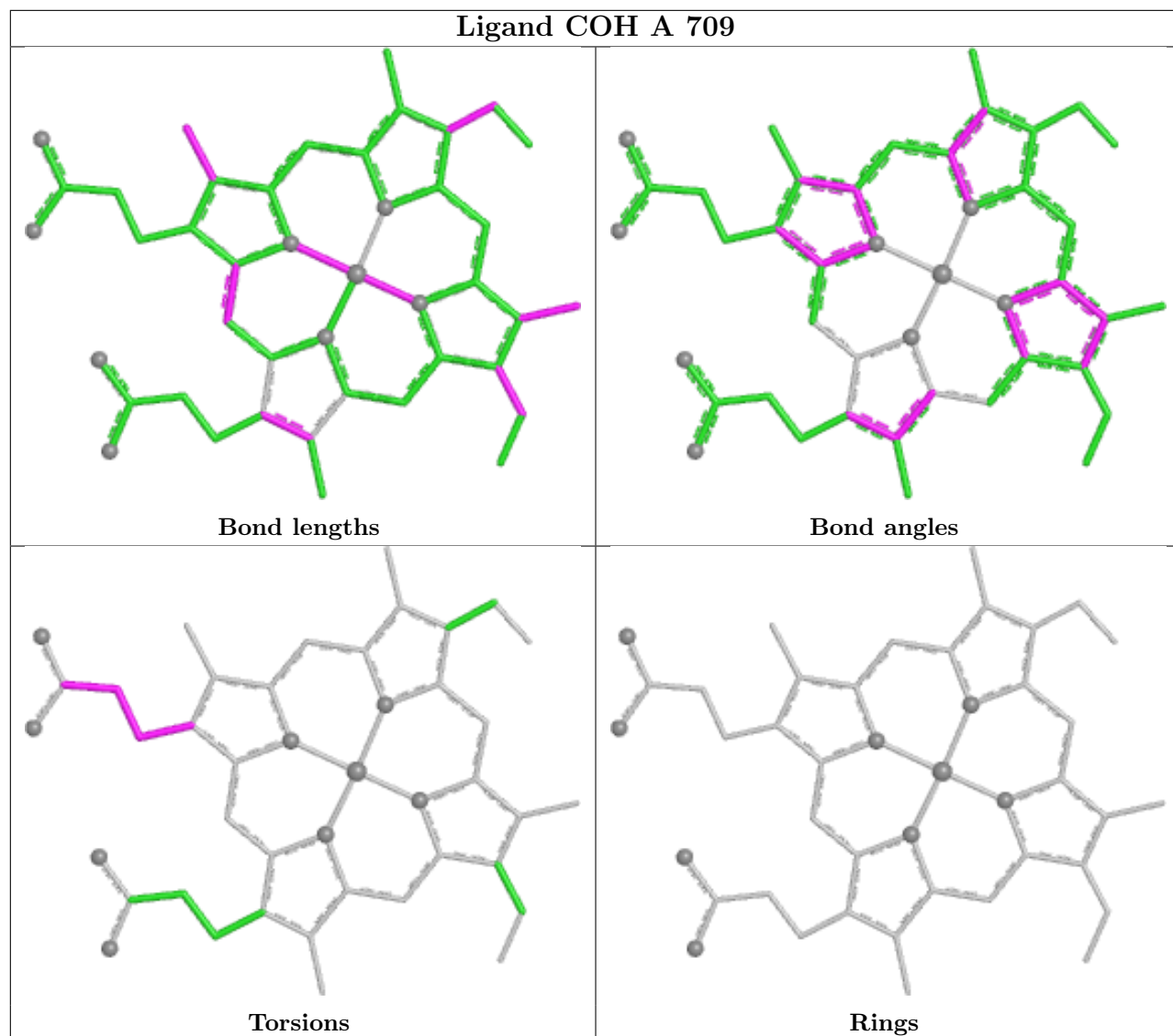
10 monomers are involved in 23 short contacts:

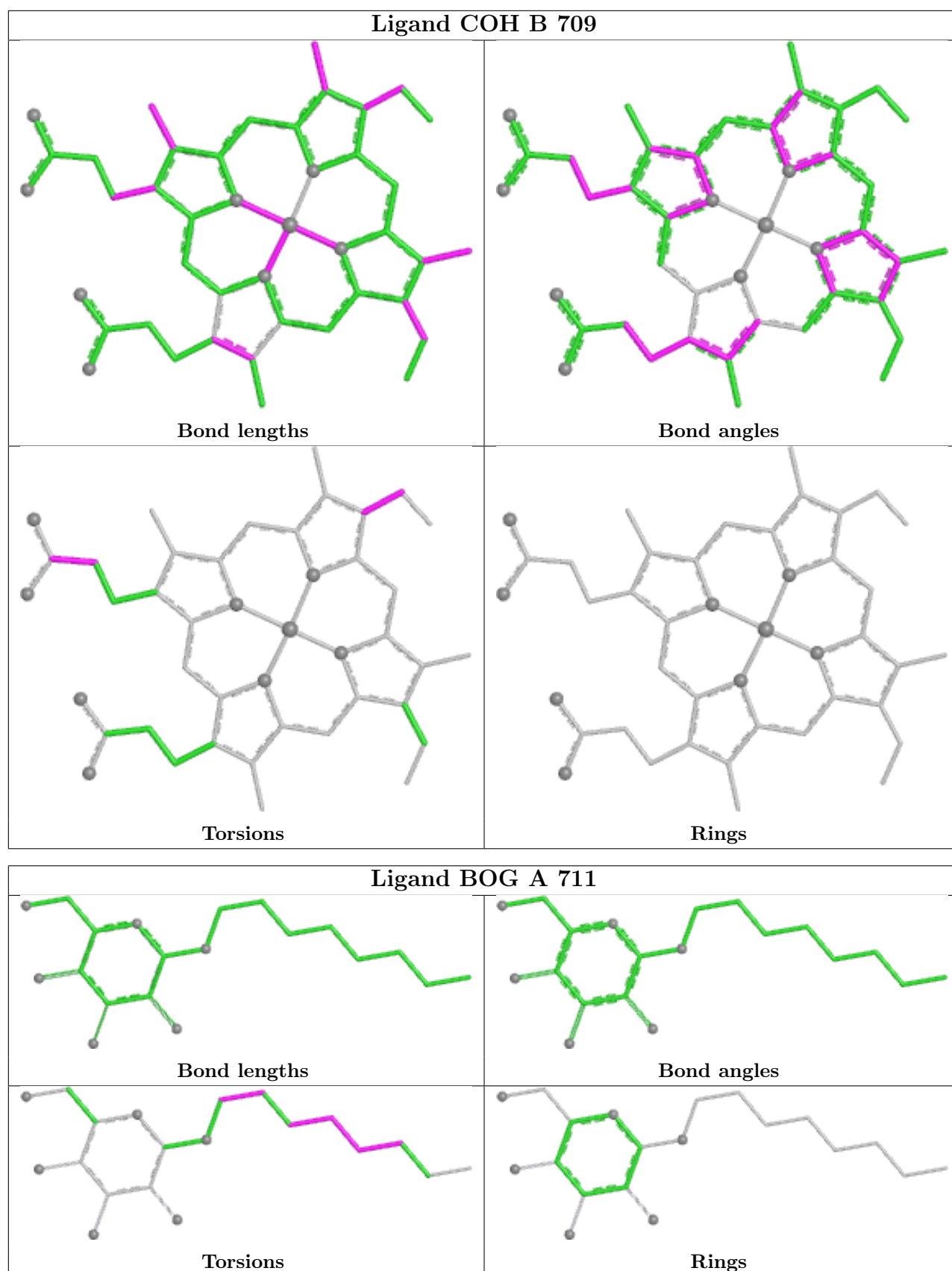
Mol	Chain	Res	Type	Clashes	Symm-Clashes
4	A	701	EDO	1	0
5	B	708	ACD	7	0
4	B	706	EDO	1	0
5	A	708	ACD	3	0
4	A	707	EDO	3	0
6	A	709	COH	3	0
4	A	702	EDO	1	0
6	B	709	COH	2	0
7	B	710	NAG	1	0
7	A	710	NAG	1	0

The following is a two-dimensional graphical depiction of Mogul quality analysis of bond lengths, bond angles, torsion angles, and ring geometry for all instances of the Ligand of Interest. In addition, ligands with molecular weight > 250 and outliers as shown on the validation Tables will also be included. For torsion angles, if less than 5% of the Mogul distribution of torsion angles is within 10 degrees of the torsion angle in question, then that torsion angle is considered an outlier. Any bond that is central to one or more torsion angles identified as an outlier by Mogul will be highlighted in the graph. For rings, the root-mean-square deviation (RMSD) between the ring in question and similar rings identified by Mogul is calculated over all ring torsion angles. If the average RMSD is greater than 60 degrees and the minimal RMSD between the ring in question and any Mogul-identified rings is also greater than 60 degrees, then that ring is considered an outlier. The outliers are highlighted in purple. The color gray indicates Mogul did not find sufficient equivalents in the CSD to analyse the geometry.









5.7 Other polymers [i](#)

There are no such residues in this entry.

5.8 Polymer linkage issues [i](#)

There are no chain breaks in this entry.

6 Fit of model and data [i](#)

6.1 Protein, DNA and RNA chains [i](#)

In the following table, the column labelled ‘#RSRZ > 2’ contains the number (and percentage) of RSRZ outliers, followed by percent RSRZ outliers for the chain as percentile scores relative to all X-ray entries and entries of similar resolution. The OWAB column contains the minimum, median, 95th percentile and maximum values of the occupancy-weighted average B-factor per residue. The column labelled ‘Q < 0.9’ lists the number of (and percentage) of residues with an average occupancy less than 0.9.

Mol	Chain	Analysed	<RSRZ>	#RSRZ>2	OWAB(Å ²)	Q<0.9
1	A	551/592 (93%)	-0.61	1 (0%) 92 92	11, 29, 42, 52	5 (0%)
1	B	551/592 (93%)	-0.49	3 (0%) 87 88	6, 30, 46, 57	4 (0%)
All	All	1102/1184 (93%)	-0.55	4 (0%) 89 89	6, 29, 44, 57	9 (0%)

All (4) RSRZ outliers are listed below:

Mol	Chain	Res	Type	RSRZ
1	A	121	SER	2.7
1	B	409	TYR	2.0
1	B	87	ASN	2.0
1	B	81	LEU	2.0

6.2 Non-standard residues in protein, DNA, RNA chains [i](#)

There are no non-standard protein/DNA/RNA residues in this entry.

6.3 Carbohydrates [i](#)

In the following table, the Atoms column lists the number of modelled atoms in the group and the number defined in the chemical component dictionary. The B-factors column lists the minimum, median, 95th percentile and maximum values of B factors of atoms in the group. The column labelled ‘Q < 0.9’ lists the number of atoms with occupancy less than 0.9.

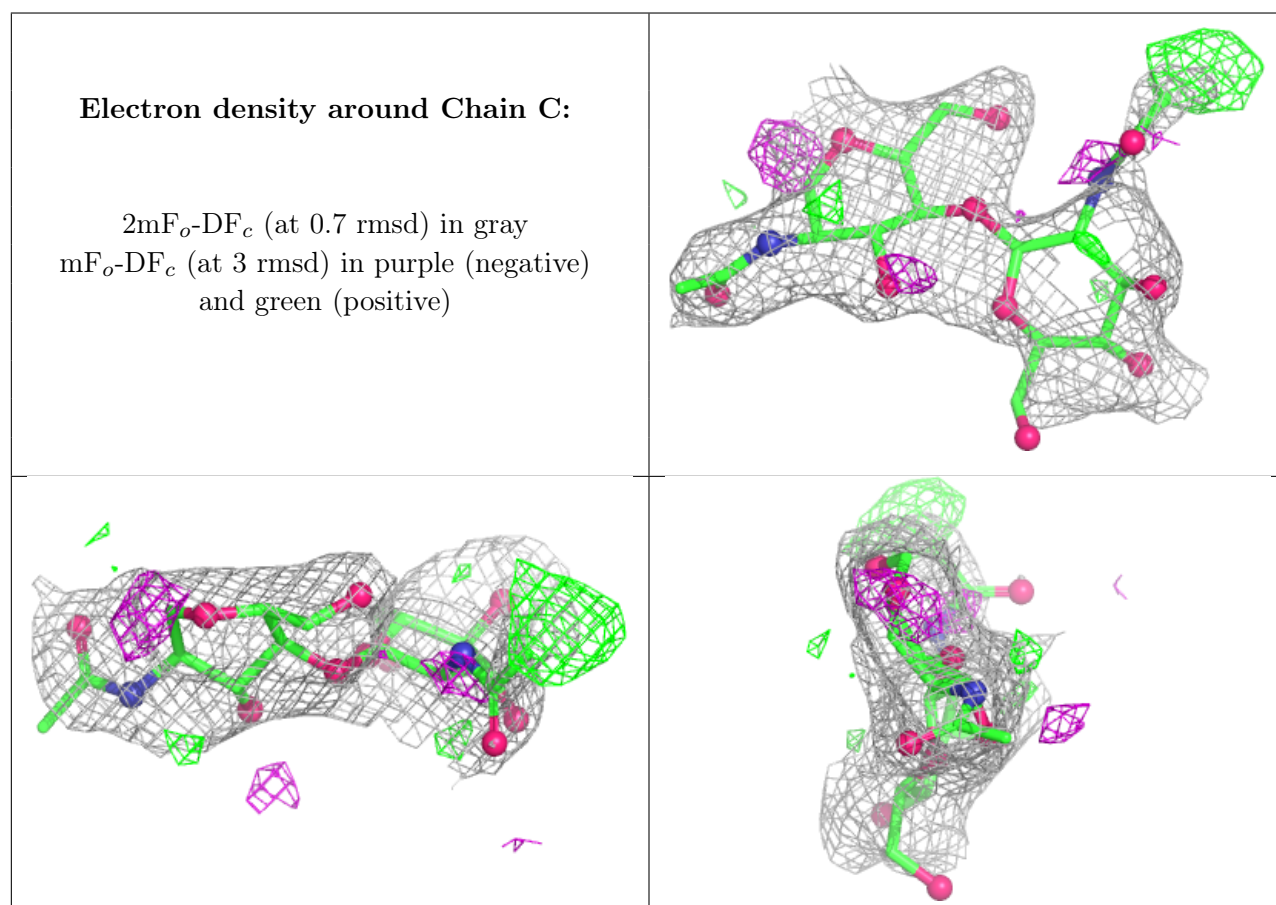
Mol	Type	Chain	Res	Atoms	RSCC	RSR	B-factors(Å ²)	Q<0.9
2	NAG	C	2	14/15	0.48	0.17	73,76,77,79	0
2	NAG	E	2	14/15	0.50	0.16	74,78,79,79	0
3	MAN	F	3	11/12	0.62	0.15	70,74,75,75	0
3	MAN	D	3	11/12	0.73	0.12	65,69,70,70	0
2	NAG	E	1	14/15	0.81	0.12	52,60,63,69	0

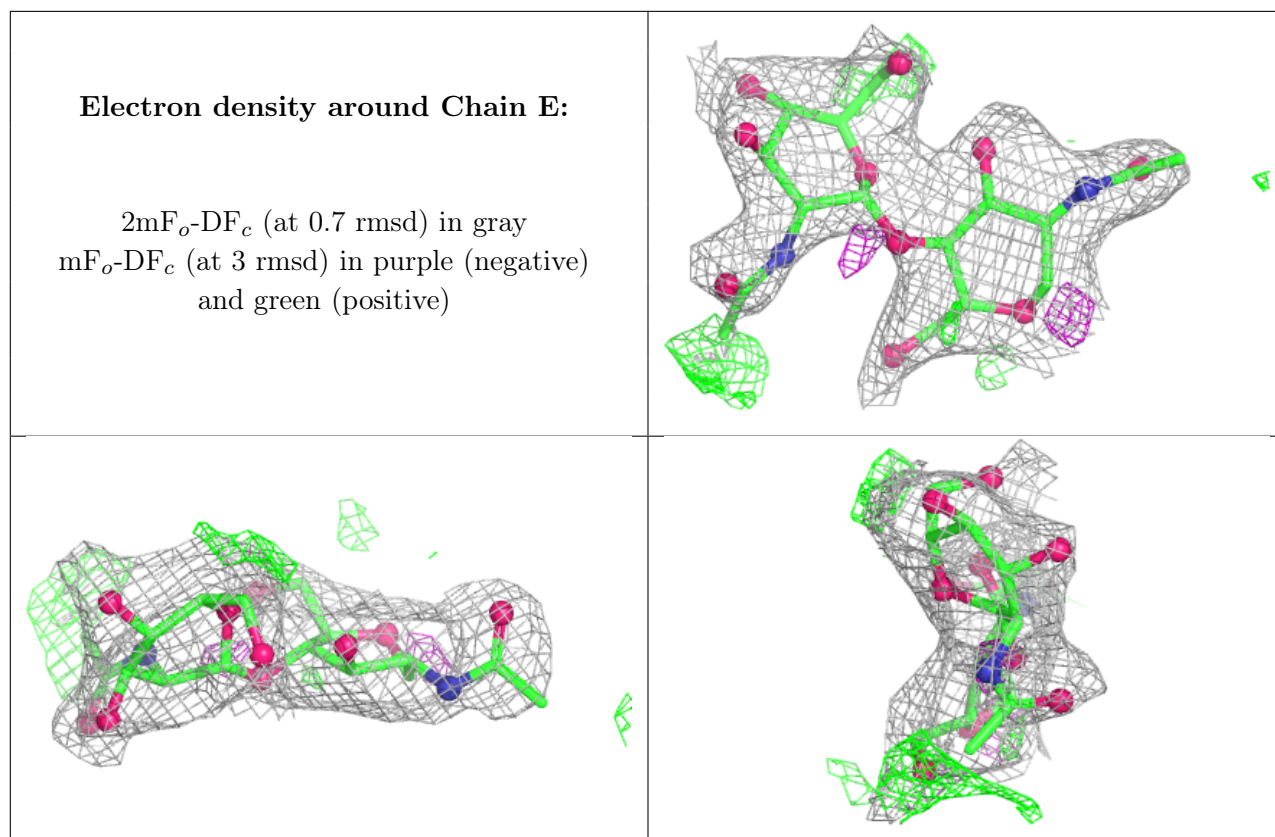
Continued on next page...

Continued from previous page...

Mol	Type	Chain	Res	Atoms	RSCC	RSR	B-factors(\AA^2)	Q<0.9
2	NAG	C	1	14/15	0.83	0.11	52,58,62,69	0
3	NAG	F	2	14/15	0.87	0.09	45,54,59,65	0
3	NAG	D	2	14/15	0.90	0.09	43,47,53,60	0
3	NAG	D	1	14/15	0.94	0.07	27,30,33,39	0
3	NAG	F	1	14/15	0.96	0.07	28,32,36,44	0

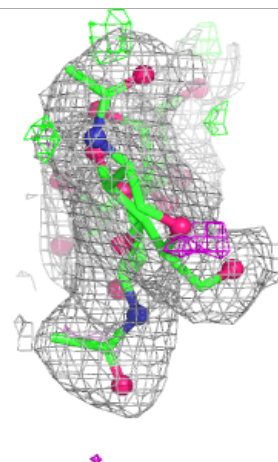
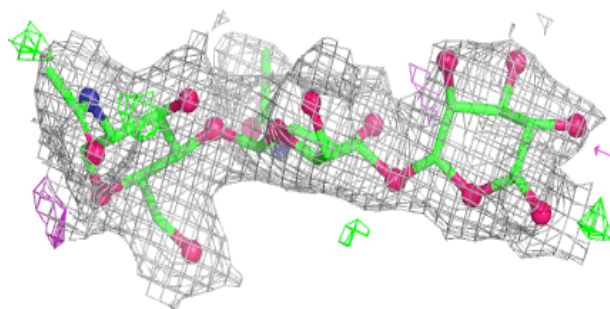
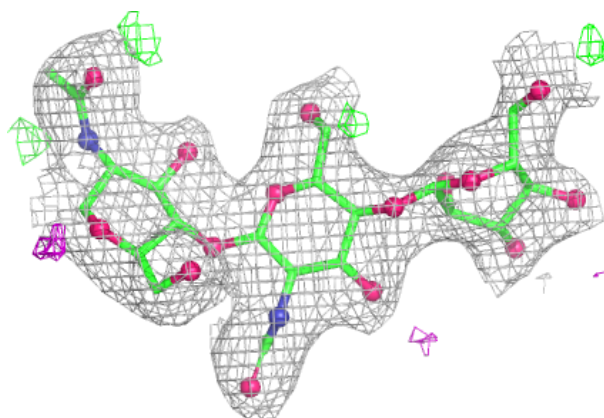
The following is a graphical depiction of the model fit to experimental electron density for oligosaccharide. Each fit is shown from different orientation to approximate a three-dimensional view.

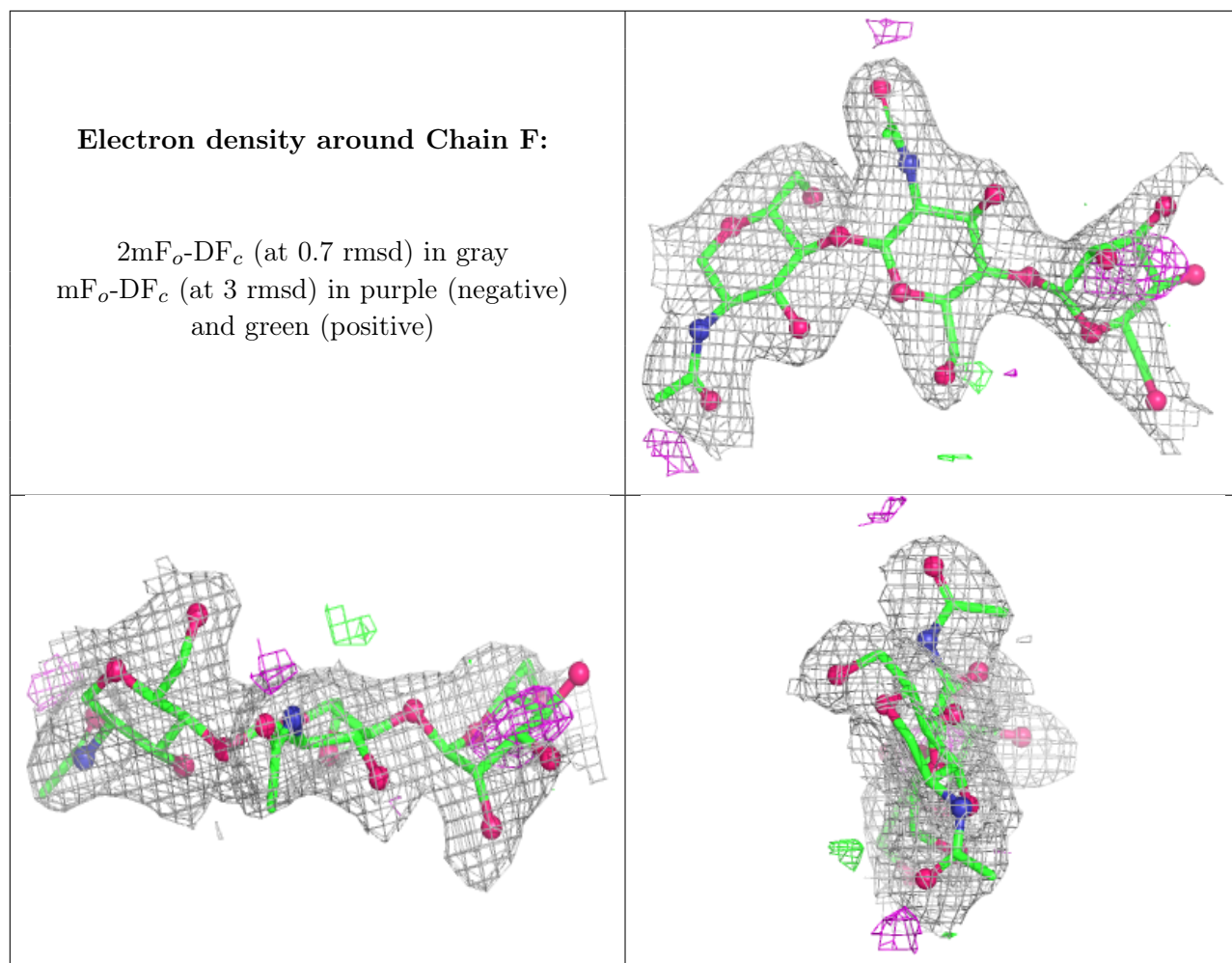




Electron density around Chain D:

$2mF_o-DF_c$ (at 0.7 rmsd) in gray
 mF_o-DF_c (at 3 rmsd) in purple (negative)
and green (positive)





6.4 Ligands [i](#)

In the following table, the Atoms column lists the number of modelled atoms in the group and the number defined in the chemical component dictionary. The B-factors column lists the minimum, median, 95th percentile and maximum values of B factors of atoms in the group. The column labelled 'Q< 0.9' lists the number of atoms with occupancy less than 0.9.

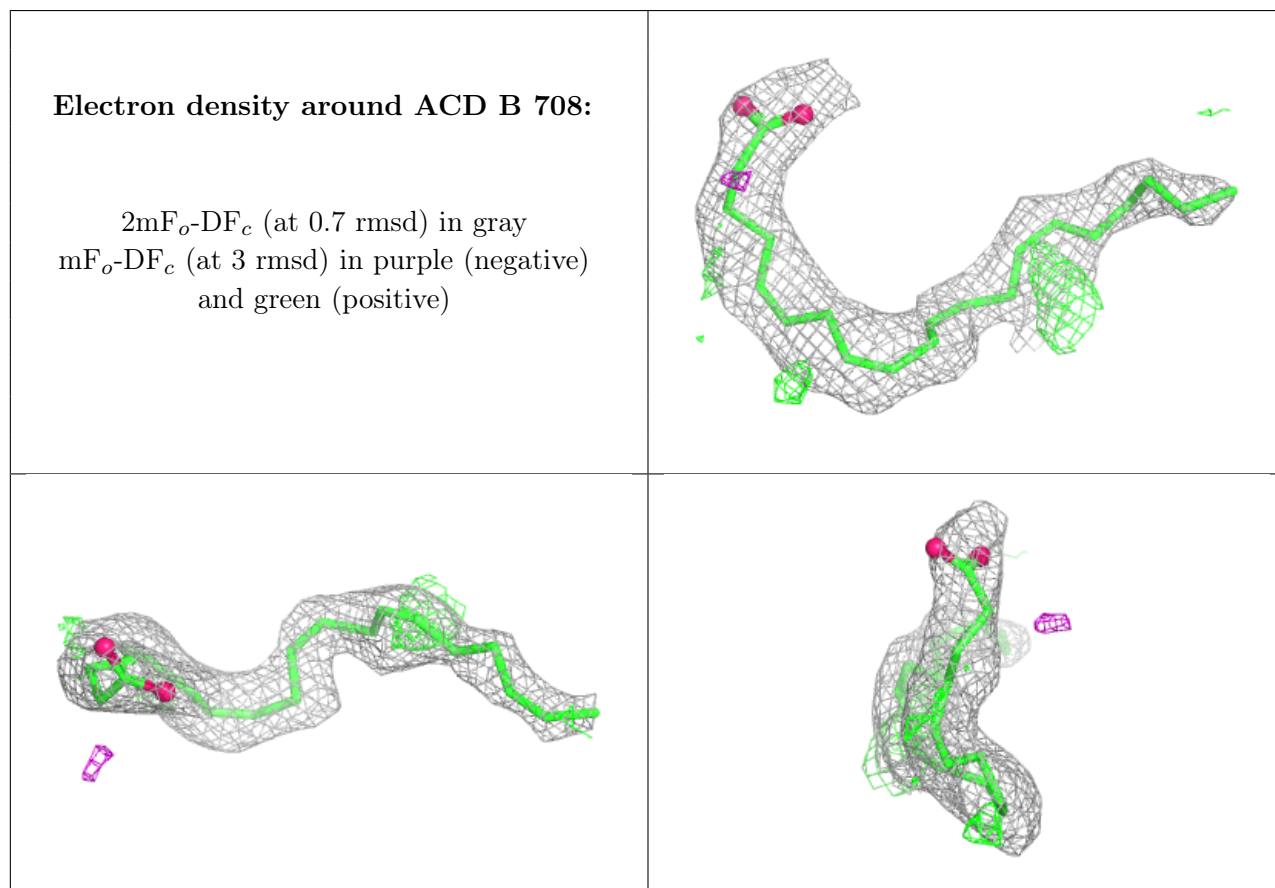
Mol	Type	Chain	Res	Atoms	RSCC	RSR	B-factors(Å ²)	Q<0.9
4	EDO	A	704	4/4	0.60	0.27	81,82,82,83	0
4	EDO	A	701	4/4	0.66	0.28	70,72,73,73	0
4	EDO	B	706	4/4	0.77	0.16	54,54,56,58	0
4	EDO	A	702	4/4	0.81	0.18	62,63,64,65	0
7	NAG	B	710	14/15	0.81	0.11	52,57,61,62	0
5	ACD	B	708	22/22	0.82	0.16	45,47,56,59	0
4	EDO	B	701	4/4	0.82	0.17	59,60,61,61	0
7	NAG	A	710	14/15	0.85	0.11	45,49,52,53	0
4	EDO	A	707	4/4	0.86	0.15	53,54,57,58	0
4	EDO	B	707	4/4	0.88	0.14	51,52,52,53	0

Continued on next page...

Continued from previous page...

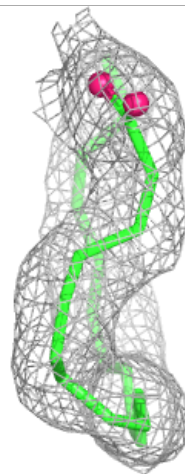
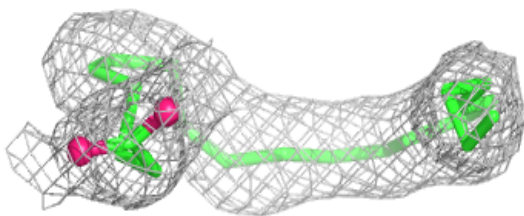
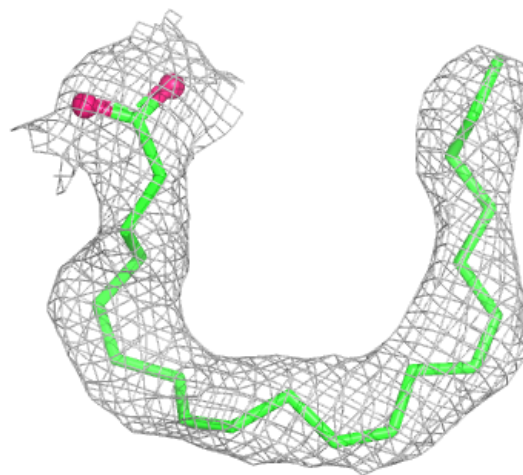
Mol	Type	Chain	Res	Atoms	RSCC	RSR	B-factors(\AA^2)	Q<0.9
5	ACD	A	708	22/22	0.92	0.09	38,42,46,47	0
4	EDO	B	704	4/4	0.92	0.13	64,65,65,66	0
4	EDO	B	703	4/4	0.94	0.08	35,36,37,38	0
4	EDO	A	703	4/4	0.94	0.09	29,32,32,37	0
6	COH	B	709	43/43	0.95	0.09	39,42,58,64	0
4	EDO	B	702	4/4	0.95	0.07	27,30,30,31	0
4	EDO	B	705	4/4	0.95	0.07	36,37,37,37	0
8	BOG	A	711	20/20	0.95	0.08	38,40,48,49	0
6	COH	A	709	43/43	0.96	0.08	37,40,59,66	0
4	EDO	A	705	4/4	0.97	0.07	27,28,29,31	0
4	EDO	A	706	4/4	0.98	0.04	30,31,31,32	0

The following is a graphical depiction of the model fit to experimental electron density of all instances of the Ligand of Interest. In addition, ligands with molecular weight > 250 and outliers as shown on the geometry validation Tables will also be included. Each fit is shown from different orientation to approximate a three-dimensional view.



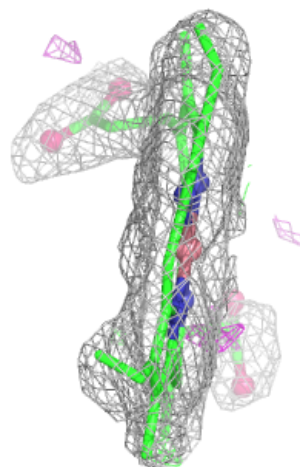
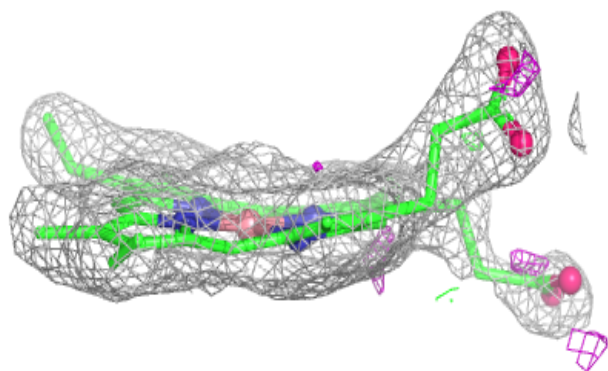
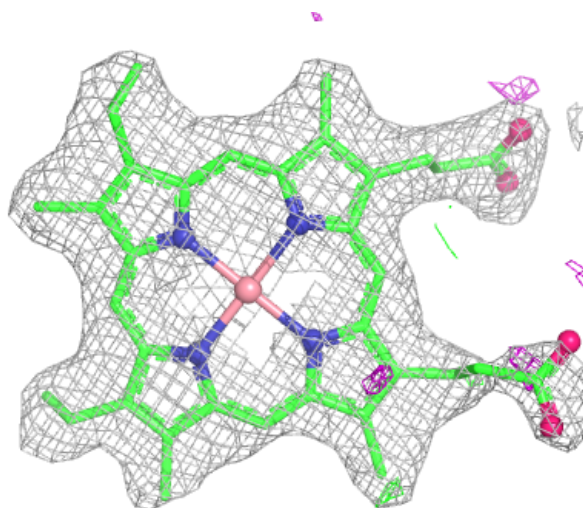
Electron density around ACD A 708:

$2mF_o-DF_c$ (at 0.7 rmsd) in gray
 mF_o-DF_c (at 3 rmsd) in purple (negative)
and green (positive)



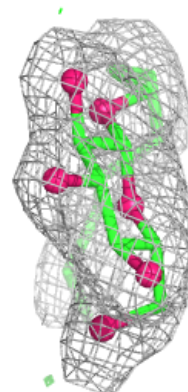
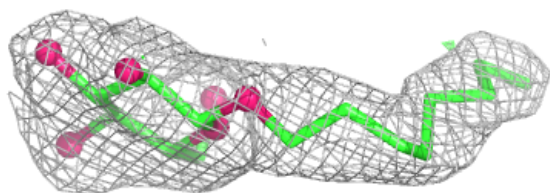
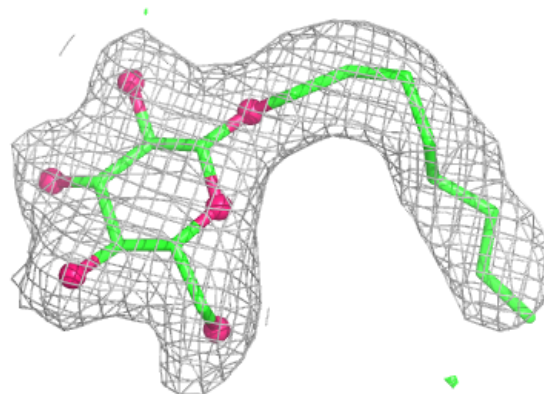
Electron density around COH B 709:

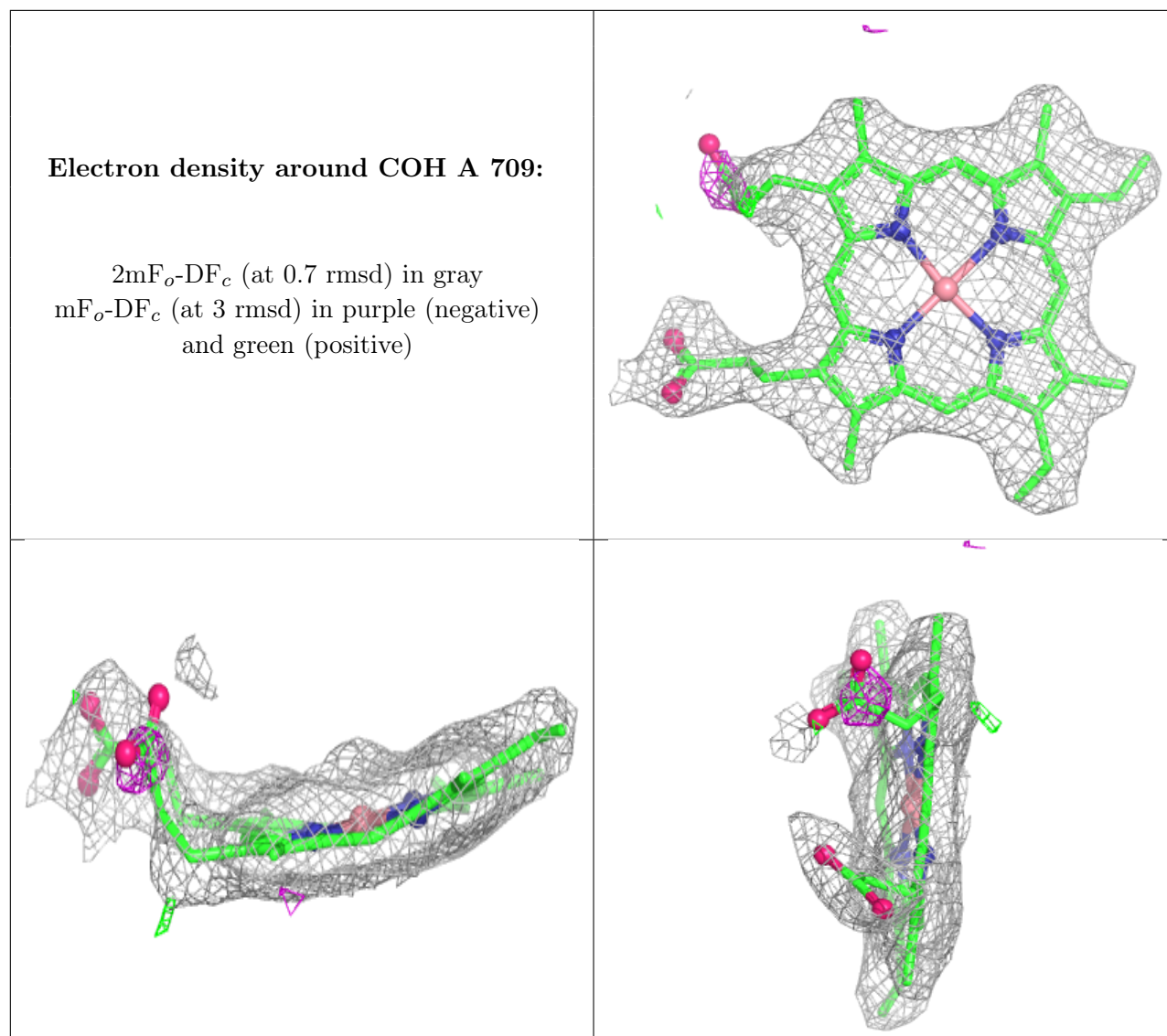
$2mF_o-DF_c$ (at 0.7 rmsd) in gray
 mF_o-DF_c (at 3 rmsd) in purple (negative)
and green (positive)



Electron density around BOG A 711:

$2mF_o-DF_c$ (at 0.7 rmsd) in gray
 mF_o-DF_c (at 3 rmsd) in purple (negative)
and green (positive)





6.5 Other polymers [i](#)

There are no such residues in this entry.