



Full wwPDB X-ray Structure Validation Report ⓘ

Jun 13, 2024 – 01:02 pm BST

PDB ID : 8OLS
Title : Structure of *Oceanobacillus iheyensis* group II intron in the presence of K⁺, Mg²⁺ and intronistat B
Authors : Silvestri, I.; Marcia, M.
Deposited on : 2023-03-30
Resolution : 3.00 Å(reported)

This is a Full wwPDB X-ray Structure Validation Report for a publicly released PDB entry.

We welcome your comments at validation@mail.wwpdb.org

A user guide is available at

<https://www.wwpdb.org/validation/2017/XrayValidationReportHelp>

with specific help available everywhere you see the ⓘ symbol.

The types of validation reports are described at

<http://www.wwpdb.org/validation/2017/FAQs#types>.

The following versions of software and data (see [references ⓘ](#)) were used in the production of this report:

MolProbity : 4.02b-467
Mogul : 1.8.4, CSD as541be (2020)
Xtrriage (Phenix) : 1.13
EDS : 2.36.2
buster-report : 1.1.7 (2018)
Percentile statistics : 20191225.v01 (using entries in the PDB archive December 25th 2019)
Refmac : 5.8.0158
CCP4 : 7.0.044 (Gargrove)
Ideal geometry (proteins) : Engh & Huber (2001)
Ideal geometry (DNA, RNA) : Parkinson et al. (1996)
Validation Pipeline (wwPDB-VP) : 2.36.2

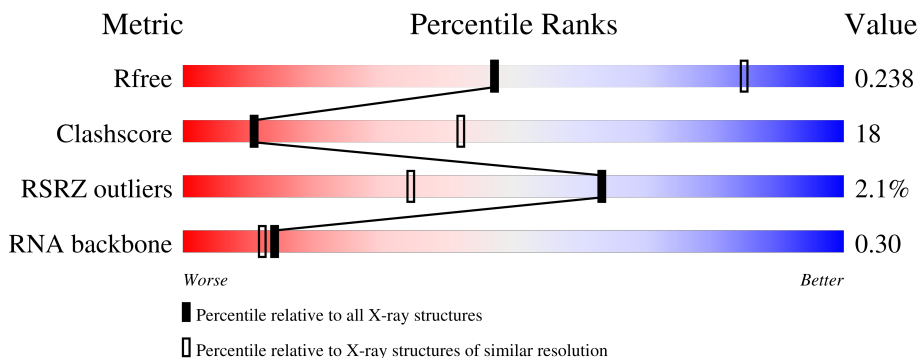
1 Overall quality at a glance

The following experimental techniques were used to determine the structure:

X-RAY DIFFRACTION

The reported resolution of this entry is 3.00 Å.

Percentile scores (ranging between 0-100) for global validation metrics of the entry are shown in the following graphic. The table shows the number of entries on which the scores are based.



Metric	Whole archive (#Entries)	Similar resolution (#Entries, resolution range(Å))
R_{free}	130704	2092 (3.00-3.00)
Clashscore	141614	2416 (3.00-3.00)
RSRZ outliers	127900	1990 (3.00-3.00)
RNA backbone	3102	1173 (3.30-2.70)

The table below summarises the geometric issues observed across the polymeric chains and their fit to the electron density. The red, orange, yellow and green segments of the lower bar indicate the fraction of residues that contain outliers for ≥ 3 , 2, 1 and 0 types of geometric quality criteria respectively. A grey segment represents the fraction of residues that are not modelled. The numeric value for each fraction is indicated below the corresponding segment, with a dot representing fractions $\leq 5\%$. The upper red bar (where present) indicates the fraction of residues that have poor fit to the electron density. The numeric value is given above the bar.

Mol	Chain	Length	Quality of chain
1	A	394	

The following table lists non-polymeric compounds, carbohydrate monomers and non-standard residues in protein, DNA, RNA chains that are outliers for geometric or electron-density-fit criteria:

Mol	Type	Chain	Res	Chirality	Geometry	Clashes	Electron density
2	MG	A	407	-	-	-	X
2	MG	A	410	-	-	-	X
2	MG	A	416	-	-	-	X

Continued on next page...

Continued from previous page...

Mol	Type	Chain	Res	Chirality	Geometry	Clashes	Electron density
2	MG	A	420	-	-	-	X
2	MG	A	421	-	-	-	X
3	K	A	432	-	-	-	X
3	K	A	440	-	-	-	X
3	K	A	442	-	-	-	X
4	SPM	A	444	-	-	-	X

2 Entry composition [i](#)

There are 7 unique types of molecules in this entry. The entry contains 8482 atoms, of which 0 are hydrogens and 0 are deuteriums.

In the tables below, the ZeroOcc column contains the number of atoms modelled with zero occupancy, the AltConf column contains the number of residues with at least one atom in alternate conformation and the Trace column contains the number of residues modelled with at most 2 atoms.

- Molecule 1 is a RNA chain called Group IIC intron.

Mol	Chain	Residues	Atoms					ZeroOcc	AltConf	Trace
			Total	C	N	O	P			
1	A	390	8341	3721	1539	2691	390	0	0	0

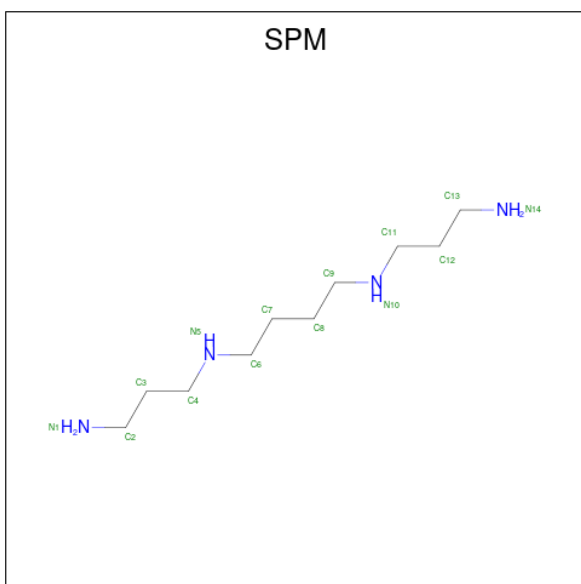
- Molecule 2 is MAGNESIUM ION (three-letter code: MG) (formula: Mg).

Mol	Chain	Residues	Atoms		ZeroOcc	AltConf
2	A	24	Total	Mg	0	0
			24	24		

- Molecule 3 is POTASSIUM ION (three-letter code: K) (formula: K).

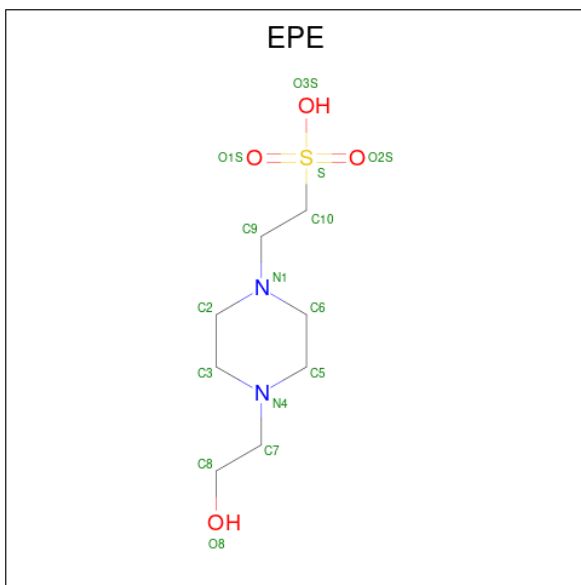
Mol	Chain	Residues	Atoms		ZeroOcc	AltConf
3	A	18	Total	K	0	0
			18	18		

- Molecule 4 is SPERMINE (three-letter code: SPM) (formula: C₁₀H₂₆N₄).



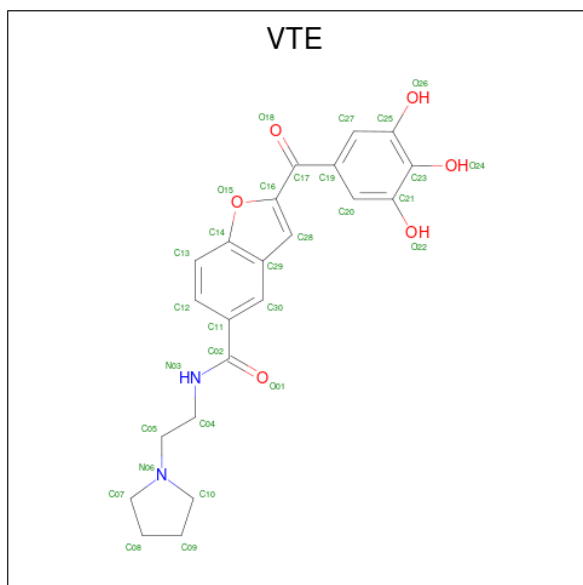
Mol	Chain	Residues	Atoms			ZeroOcc	AltConf
4	A	1	Total	C	N	0	0
			14	10	4		
4	A	1	Total	C	N	0	0
			14	10	4		

- Molecule 5 is 4-(2-HYDROXYETHYL)-1-PIPERAZINE ETHANESULFONIC ACID (three-letter code: EPE) (formula: C₈H₁₈N₂O₄S).



Mol	Chain	Residues	Atoms					ZeroOcc	AltConf
5	A	1	Total	C	N	O	S	0	0
			15	8	2	4	1		
5	A	1	Total	C	N	O	S	0	0
			15	8	2	4	1		

- Molecule 6 is {N}-(2-pyrrolidin-1-ylethyl)-2-[3,4,5-tris(oxidanyl)phenyl]carbonyl-1-benzofuran-5-carboxamide (three-letter code: VTE) (formula: C₂₂H₂₂N₂O₆) (labeled as "Ligand of Interest" by depositor).



Mol	Chain	Residues	Atoms				ZeroOcc	AltConf
			Total	C	N	O		
6	A	1	30	22	2	6	0	0

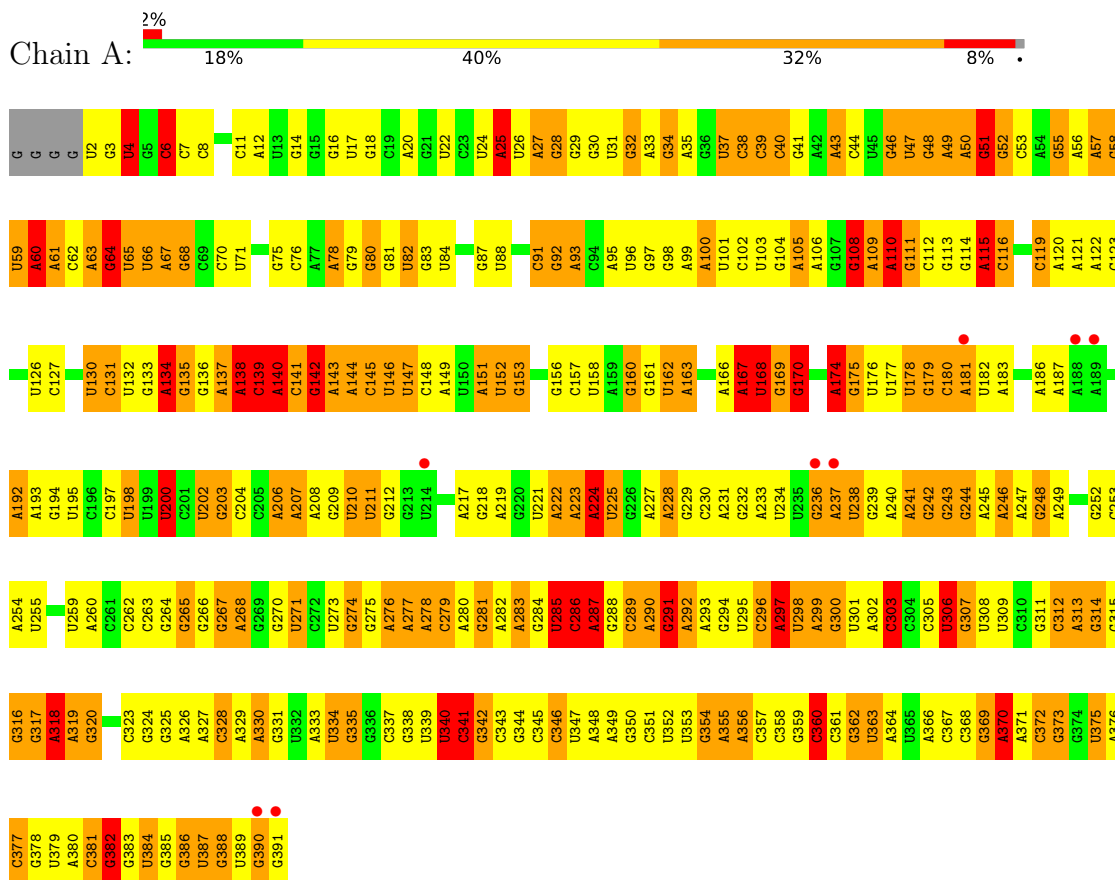
- Molecule 7 is water.

Mol	Chain	Residues	Atoms		ZeroOcc	AltConf
			Total	O		
7	A	11	11	11	0	0

3 Residue-property plots [i](#)

These plots are drawn for all protein, RNA, DNA and oligosaccharide chains in the entry. The first graphic for a chain summarises the proportions of the various outlier classes displayed in the second graphic. The second graphic shows the sequence view annotated by issues in geometry and electron density. Residues are color-coded according to the number of geometric quality criteria for which they contain at least one outlier: green = 0, yellow = 1, orange = 2 and red = 3 or more. A red dot above a residue indicates a poor fit to the electron density ($RSRZ > 2$). Stretches of 2 or more consecutive residues without any outlier are shown as a green connector. Residues present in the sample, but not in the model, are shown in grey.

- Molecule 1: Group IIC intron



4 Data and refinement statistics

Property	Value	Source
Space group	P 21 21 21	Depositor
Cell constants a, b, c, α , β , γ	89.02Å 94.96Å 223.85Å 90.00° 90.00° 90.00°	Depositor
Resolution (Å)	39.69 – 3.00 39.66 – 3.00	Depositor EDS
% Data completeness (in resolution range)	99.3 (39.69-3.00) 99.4 (39.66-3.00)	Depositor EDS
R_{merge}	0.04	Depositor
R_{sym}	(Not available)	Depositor
$\langle I/\sigma(I) \rangle$ ¹	1.35 (at 3.01Å)	Xtrriage
Refinement program	REFMAC 5.8.0411	Depositor
R, R_{free}	0.189 , 0.242 0.189 , 0.238	Depositor DCC
R_{free} test set	2021 reflections (5.24%)	wwPDB-VP
Wilson B-factor (Å ²)	122.1	Xtrriage
Anisotropy	0.269	Xtrriage
Bulk solvent k_{sol} (e/Å ³), B_{sol} (Å ²)	0.26 , 95.2	EDS
L-test for twinning ²	$\langle L \rangle = 0.49$, $\langle L^2 \rangle = 0.32$	Xtrriage
Estimated twinning fraction	No twinning to report.	Xtrriage
F_o, F_c correlation	0.96	EDS
Total number of atoms	8482	wwPDB-VP
Average B, all atoms (Å ²)	144.0	wwPDB-VP

Xtrriage's analysis on translational NCS is as follows: *The largest off-origin peak in the Patterson function is 2.76% of the height of the origin peak. No significant pseudotranslation is detected.*

¹Intensities estimated from amplitudes.

²Theoretical values of $\langle |L| \rangle$, $\langle L^2 \rangle$ for acentric reflections are 0.5, 0.333 respectively for untwinned datasets, and 0.375, 0.2 for perfectly twinned datasets.

5 Model quality i

5.1 Standard geometry i

Bond lengths and bond angles in the following residue types are not validated in this section: MG, VTE, SPM, EPE, K

The Z score for a bond length (or angle) is the number of standard deviations the observed value is removed from the expected value. A bond length (or angle) with $|Z| > 5$ is considered an outlier worth inspection. RMSZ is the root-mean-square of all Z scores of the bond lengths (or angles).

Mol	Chain	Bond lengths		Bond angles	
		RMSZ	# Z >5	RMSZ	# Z >5
1	A	0.68	2/9346 (0.0%)	1.61	235/14579 (1.6%)

All (2) bond length outliers are listed below:

Mol	Chain	Res	Type	Atoms	Z	Observed(Å)	Ideal(Å)
1	A	6	C	P-OP1	5.84	1.58	1.49
1	A	20	A	P-O5'	5.08	1.64	1.59

All (235) bond angle outliers are listed below:

Mol	Chain	Res	Type	Atoms	Z	Observed(°)	Ideal(°)
1	A	360	C	O5'-P-OP2	-17.38	89.85	110.70
1	A	285	U	O5'-P-OP2	-15.88	91.41	105.70
1	A	112	C	O5'-P-OP2	-15.66	91.60	105.70
1	A	64	G	O5'-P-OP2	-15.49	91.76	105.70
1	A	97	G	O5'-P-OP2	-14.75	92.43	105.70
1	A	175	G	O5'-P-OP2	-14.40	92.74	105.70
1	A	58	G	O5'-P-OP2	-13.45	93.59	105.70
1	A	28	G	O5'-P-OP2	13.12	126.44	110.70
1	A	121	A	O5'-P-OP2	-12.91	94.08	105.70
1	A	204	C	O5'-P-OP2	-12.60	94.36	105.70
1	A	131	C	O5'-P-OP1	12.30	125.46	110.70
1	A	47	U	O5'-P-OP1	-11.99	94.91	105.70
1	A	242	G	O5'-P-OP2	-11.80	95.08	105.70
1	A	98	G	O5'-P-OP1	11.62	124.64	110.70
1	A	264	G	O5'-P-OP1	11.53	124.54	110.70
1	A	318	A	O5'-P-OP1	-11.12	95.70	105.70
1	A	131	C	O5'-P-OP2	-10.97	95.83	105.70
1	A	363	U	O5'-P-OP2	10.65	123.48	110.70
1	A	244	G	O5'-P-OP2	10.37	123.15	110.70

Continued on next page...

Continued from previous page...

Mol	Chain	Res	Type	Atoms	Z	Observed(°)	Ideal(°)
1	A	244	G	O5'-P-OP1	-10.37	96.37	105.70
1	A	289	C	O3'-P-O5'	-10.23	84.55	104.00
1	A	99	A	O5'-P-OP1	10.23	122.97	110.70
1	A	99	A	O5'-P-OP2	-10.21	96.51	105.70
1	A	38	C	O5'-P-OP2	-10.18	96.54	105.70
1	A	71	U	O5'-P-OP2	-10.07	96.64	105.70
1	A	55	G	O3'-P-O5'	-10.01	84.98	104.00
1	A	350	G	O5'-P-OP1	9.92	122.60	110.70
1	A	71	U	O5'-P-OP1	9.66	122.29	110.70
1	A	377	C	O5'-P-OP2	-9.55	97.11	105.70
1	A	323	C	O5'-P-OP2	-8.98	97.62	105.70
1	A	112	C	O5'-P-OP1	8.95	121.43	110.70
1	A	268	A	O5'-P-OP1	8.80	121.26	110.70
1	A	200	U	O5'-P-OP2	-8.80	97.78	105.70
1	A	323	C	O5'-P-OP1	8.80	121.25	110.70
1	A	58	G	O3'-P-O5'	-8.62	87.62	104.00
1	A	57	A	O5'-P-OP1	-8.58	97.98	105.70
1	A	111	G	O5'-P-OP2	-8.57	97.99	105.70
1	A	174	A	O5'-P-OP2	-8.45	98.10	105.70
1	A	136	G	O5'-P-OP1	-8.42	98.12	105.70
1	A	271	U	O5'-P-OP1	-8.34	98.20	105.70
1	A	198	U	O5'-P-OP2	-8.33	98.20	105.70
1	A	170	G	O5'-P-OP2	-8.21	98.31	105.70
1	A	135	G	O5'-P-OP2	-8.18	98.34	105.70
1	A	126	U	O5'-P-OP2	8.15	120.47	110.70
1	A	80	G	O5'-P-OP1	-8.11	98.40	105.70
1	A	323	C	O3'-P-O5'	-8.10	88.60	104.00
1	A	176	U	O5'-P-OP2	-8.05	98.45	105.70
1	A	303	C	O3'-P-O5'	-8.05	88.70	104.00
1	A	278	A	O5'-P-OP2	8.03	120.34	110.70
1	A	197	C	O5'-P-OP2	-8.01	98.49	105.70
1	A	40	C	O3'-P-O5'	-7.99	88.83	104.00
1	A	135	G	O3'-P-O5'	-7.90	88.98	104.00
1	A	270	G	O5'-P-OP2	7.85	120.12	110.70
1	A	356	A	O3'-P-O5'	-7.83	89.13	104.00
1	A	375	U	O5'-P-OP2	-7.75	98.72	105.70
1	A	203	G	O5'-P-OP2	-7.69	98.78	105.70
1	A	98	G	O5'-P-OP2	-7.68	98.79	105.70
1	A	46	G	OP1-P-O3'	7.59	121.89	105.20
1	A	242	G	O5'-P-OP1	7.59	119.80	110.70
1	A	274	G	O5'-P-OP1	7.54	119.75	110.70
1	A	320	G	O5'-P-OP1	-7.52	98.93	105.70

Continued on next page...

Continued from previous page...

Mol	Chain	Res	Type	Atoms	Z	Observed(°)	Ideal(°)
1	A	141	C	OP1-P-O3'	7.50	121.69	105.20
1	A	63	A	OP2-P-O3'	7.49	121.69	105.20
1	A	249	A	O5'-P-OP1	7.49	119.69	110.70
1	A	246	A	O5'-P-OP1	-7.46	98.98	105.70
1	A	285	U	O5'-P-OP1	7.40	119.58	110.70
1	A	156	G	O5'-P-OP2	-7.38	99.06	105.70
1	A	106	A	O5'-P-OP2	-7.33	99.10	105.70
1	A	355	A	O3'-P-O5'	-7.21	90.31	104.00
1	A	53	C	O5'-P-OP2	7.14	119.27	110.70
1	A	371	A	O5'-P-OP2	-7.13	99.28	105.70
1	A	203	G	O5'-P-OP1	7.12	119.25	110.70
1	A	49	A	O5'-P-OP2	-7.12	99.29	105.70
1	A	204	C	OP2-P-O3'	7.07	120.76	105.20
1	A	141	C	O3'-P-O5'	-7.06	90.59	104.00
1	A	252	G	OP2-P-O3'	7.05	120.71	105.20
1	A	144	A	OP2-P-O3'	7.00	120.61	105.20
1	A	379	U	O5'-P-OP1	7.00	119.09	110.70
1	A	24	U	O4'-C1'-N1	-7.00	102.60	108.20
1	A	227	A	O5'-P-OP2	-6.96	99.44	105.70
1	A	48	G	O5'-P-OP2	-6.93	99.47	105.70
1	A	351	C	O5'-P-OP2	6.92	119.01	110.70
1	A	176	U	O5'-P-OP1	6.92	119.00	110.70
1	A	105	A	OP2-P-O3'	6.92	120.42	105.20
1	A	224	A	C1'-O4'-C4'	-6.87	104.41	109.90
1	A	344	G	O5'-P-OP2	6.81	118.87	110.70
1	A	203	G	OP2-P-O3'	6.80	120.16	105.20
1	A	386	G	OP1-P-O3'	6.80	120.16	105.20
1	A	178	U	O3'-P-O5'	-6.80	91.08	104.00
1	A	49	A	O3'-P-O5'	-6.79	91.09	104.00
1	A	354	G	O3'-P-O5'	-6.74	91.20	104.00
1	A	108	G	O3'-P-O5'	-6.73	91.21	104.00
1	A	376	A	OP1-P-O3'	6.73	120.01	105.20
1	A	131	C	O3'-P-O5'	-6.68	91.31	104.00
1	A	352	U	OP2-P-O3'	6.68	119.89	105.20
1	A	141	C	O5'-P-OP1	-6.66	99.70	105.70
1	A	265	G	O5'-P-OP1	6.64	118.67	110.70
1	A	246	A	O5'-P-OP2	6.63	118.65	110.70
1	A	4	U	O3'-P-O5'	-6.60	91.47	104.00
1	A	193	A	O5'-P-OP2	6.60	118.62	110.70
1	A	297	A	C4'-C3'-C2'	-6.59	96.01	102.60
1	A	373	G	O5'-P-OP2	6.58	118.60	110.70
1	A	108	G	OP1-P-O3'	6.58	119.67	105.20

Continued on next page...

Continued from previous page...

Mol	Chain	Res	Type	Atoms	Z	Observed(°)	Ideal(°)
1	A	317	G	OP1-P-O3'	6.49	119.48	105.20
1	A	168	U	C2'-C3'-O3'	6.49	124.08	113.70
1	A	259	U	O3'-P-O5'	-6.45	91.75	104.00
1	A	59	U	O5'-P-OP1	6.43	118.42	110.70
1	A	381	C	OP2-P-O3'	6.40	119.29	105.20
1	A	31	U	OP2-P-O3'	6.36	119.19	105.20
1	A	130	U	O5'-P-OP1	6.36	118.33	110.70
1	A	274	G	OP2-P-O3'	6.33	119.13	105.20
1	A	288	G	OP2-P-O3'	6.31	119.08	105.20
1	A	274	G	O5'-P-OP2	-6.30	100.03	105.70
1	A	381	C	O3'-P-O5'	-6.28	92.06	104.00
1	A	88	U	O5'-P-OP2	6.25	118.21	110.70
1	A	174	A	OP2-P-O3'	6.25	118.96	105.20
1	A	367	C	O5'-P-OP2	-6.25	100.07	105.70
1	A	11	C	OP2-P-O3'	6.24	118.94	105.20
1	A	291	G	C2'-C3'-O3'	6.24	123.69	113.70
1	A	356	A	OP1-P-O3'	6.22	118.89	105.20
1	A	34	G	OP2-P-O3'	6.21	118.87	105.20
1	A	51	G	OP1-P-O3'	6.20	118.84	105.20
1	A	174	A	C4'-C3'-C2'	-6.19	96.41	102.60
1	A	22	U	OP2-P-O3'	6.19	118.81	105.20
1	A	387	U	O5'-P-OP1	-6.18	100.14	105.70
1	A	248	G	O3'-P-O5'	-6.15	92.31	104.00
1	A	115	A	O3'-P-O5'	-6.13	92.36	104.00
1	A	263	C	O5'-P-OP1	6.13	118.05	110.70
1	A	93	A	O3'-P-O5'	-6.10	92.41	104.00
1	A	241	A	OP2-P-O3'	6.10	118.61	105.20
1	A	382	G	OP2-P-O3'	6.08	118.57	105.20
1	A	40	C	O5'-P-OP2	-6.07	100.24	105.70
1	A	14	G	OP2-P-O3'	6.07	118.55	105.20
1	A	174	A	O5'-P-OP1	6.07	117.98	110.70
1	A	135	G	OP1-P-O3'	6.06	118.54	105.20
1	A	192	A	O5'-P-OP2	6.06	117.98	110.70
1	A	297	A	C3'-C2'-C1'	-6.04	96.67	101.50
1	A	109	A	O5'-P-OP2	6.04	117.95	110.70
1	A	64	G	OP1-P-O3'	6.03	118.47	105.20
1	A	57	A	OP2-P-O3'	5.95	118.30	105.20
1	A	92	G	O4'-C1'-N9	-5.94	103.45	108.20
1	A	379	U	O3'-P-O5'	-5.93	92.74	104.00
1	A	67	A	O5'-P-OP1	5.92	117.80	110.70
1	A	268	A	O5'-P-OP2	-5.89	100.40	105.70
1	A	121	A	O5'-P-OP1	5.88	117.76	110.70

Continued on next page...

Continued from previous page...

Mol	Chain	Res	Type	Atoms	Z	Observed(°)	Ideal(°)
1	A	179	G	OP1-P-O3'	5.87	118.11	105.20
1	A	56	A	OP1-P-O3'	5.83	118.02	105.20
1	A	288	G	O5'-P-OP2	-5.82	100.46	105.70
1	A	368	C	O5'-P-OP2	5.80	117.66	110.70
1	A	140	A	OP1-P-O3'	5.80	117.95	105.20
1	A	2	U	OP2-P-O3'	5.79	117.93	105.20
1	A	378	G	OP2-P-O3'	5.79	117.93	105.20
1	A	41	G	O5'-P-OP1	5.78	117.63	110.70
1	A	50	A	P-O3'-C3'	5.77	126.62	119.70
1	A	113	G	O3'-P-O5'	-5.73	93.11	104.00
1	A	132	U	O5'-P-OP1	5.73	117.57	110.70
1	A	60	A	OP2-P-O3'	5.73	117.80	105.20
1	A	58	G	O5'-P-OP1	5.71	117.55	110.70
1	A	100	A	OP2-P-O3'	5.69	117.72	105.20
1	A	377	C	O5'-P-OP1	-5.69	100.58	105.70
1	A	167	A	O3'-P-O5'	-5.68	93.20	104.00
1	A	200	U	O3'-P-O5'	-5.68	93.21	104.00
1	A	283	A	OP2-P-O3'	5.66	117.65	105.20
1	A	362	G	OP1-P-O3'	5.65	117.64	105.20
1	A	275	G	O5'-P-OP1	5.63	117.46	110.70
1	A	127	C	O5'-P-OP1	-5.63	100.64	105.70
1	A	35	A	O5'-P-OP2	-5.61	100.65	105.70
1	A	328	C	O3'-P-O5'	5.60	114.64	104.00
1	A	139	C	OP2-P-O3'	5.58	117.48	105.20
1	A	198	U	OP1-P-O3'	5.58	117.47	105.20
1	A	320	G	OP2-P-O3'	-5.58	92.93	105.20
1	A	270	G	OP1-P-O3'	5.57	117.45	105.20
1	A	243	G	OP1-P-O3'	5.55	117.41	105.20
1	A	145	C	OP2-P-O3'	5.52	117.35	105.20
1	A	346	C	OP1-P-O3'	5.51	117.31	105.20
1	A	286	C	C1'-O4'-C4'	-5.50	105.50	109.90
1	A	357	C	O5'-P-OP2	5.50	117.30	110.70
1	A	319	A	OP1-P-O3'	5.49	117.28	105.20
1	A	97	G	O4'-C4'-C3'	-5.47	98.53	104.00
1	A	345	C	O5'-P-OP1	-5.47	100.77	105.70
1	A	147	U	O5'-P-OP2	-5.46	100.78	105.70
1	A	134	A	OP2-P-O3'	5.46	117.21	105.20
1	A	318	A	OP1-P-O3'	5.45	117.19	105.20
1	A	287	A	C3'-C2'-C1'	-5.45	97.14	101.50
1	A	119	C	O5'-P-OP1	5.43	117.22	110.70
1	A	138	A	O5'-P-OP1	-5.43	100.81	105.70
1	A	30	G	OP2-P-O3'	5.43	117.14	105.20

Continued on next page...

Continued from previous page...

Mol	Chain	Res	Type	Atoms	Z	Observed(°)	Ideal(°)
1	A	116	C	OP2-P-O3'	5.43	117.14	105.20
1	A	170	G	OP2-P-O3'	5.43	117.15	105.20
1	A	237	A	C3'-C2'-C1'	-5.43	97.16	101.50
1	A	248	G	C3'-C2'-C1'	-5.42	97.16	101.50
1	A	234	U	O3'-P-O5'	-5.40	93.74	104.00
1	A	139	C	P-O3'-C3'	5.39	126.17	119.70
1	A	262	C	O3'-P-O5'	-5.39	93.76	104.00
1	A	142	G	C3'-C2'-C1'	5.36	105.79	101.50
1	A	378	G	O5'-P-OP2	-5.35	100.88	105.70
1	A	249	A	O3'-P-O5'	-5.34	93.85	104.00
1	A	134	A	C3'-C2'-C1'	5.34	105.77	101.50
1	A	267	G	OP2-P-O3'	5.33	116.94	105.20
1	A	287	A	OP2-P-O3'	5.32	116.90	105.20
1	A	132	U	O5'-P-OP2	5.29	117.05	110.70
1	A	265	G	O5'-P-OP2	-5.29	100.94	105.70
1	A	320	G	N1-C6-O6	5.27	123.06	119.90
1	A	291	G	P-O3'-C3'	5.26	126.02	119.70
1	A	140	A	O3'-P-O5'	-5.26	94.01	104.00
1	A	39	C	C6-N1-C2	5.24	122.39	120.30
1	A	341	C	P-O3'-C3'	5.24	125.98	119.70
1	A	331	G	O3'-P-O5'	-5.23	94.06	104.00
1	A	50	A	O5'-P-OP1	5.22	116.97	110.70
1	A	160	G	C4'-C3'-C2'	-5.20	97.40	102.60
1	A	112	C	O3'-P-O5'	-5.19	94.13	104.00
1	A	134	A	P-O3'-C3'	5.19	125.93	119.70
1	A	110	A	OP2-P-O3'	5.19	116.62	105.20
1	A	43	A	O5'-P-OP1	5.18	116.92	110.70
1	A	367	C	O3'-P-O5'	-5.18	94.16	104.00
1	A	50	A	C4'-C3'-O3'	5.17	123.35	113.00
1	A	370	A	OP2-P-O3'	5.16	116.55	105.20
1	A	275	G	OP2-P-O3'	5.15	116.54	105.20
1	A	306	U	C3'-C2'-C1'	-5.15	97.38	101.50
1	A	87	G	O5'-P-OP2	5.14	116.87	110.70
1	A	282	A	OP2-P-O3'	5.14	116.52	105.20
1	A	32	G	OP2-P-O3'	5.14	116.50	105.20
1	A	25	A	O3'-P-O5'	-5.13	94.25	104.00
1	A	37	U	OP1-P-O3'	5.13	116.49	105.20
1	A	288	G	C4'-C3'-C2'	-5.13	97.47	102.60
1	A	136	G	OP1-P-O3'	5.12	116.47	105.20
1	A	91	C	O3'-P-O5'	-5.12	94.28	104.00
1	A	40	C	O5'-P-OP1	5.11	116.83	110.70
1	A	344	G	O5'-P-OP1	-5.11	101.11	105.70

Continued on next page...

Continued from previous page...

Mol	Chain	Res	Type	Atoms	Z	Observed(°)	Ideal(°)
1	A	39	C	O4'-C1'-N1	-5.10	104.12	108.20
1	A	178	U	OP1-P-O3'	5.10	116.42	105.20
1	A	340	U	P-O3'-C3'	5.08	125.79	119.70
1	A	130	U	OP2-P-O3'	5.06	116.33	105.20
1	A	276	A	O3'-P-O5'	-5.03	94.44	104.00
1	A	386	G	O5'-P-OP2	5.03	116.74	110.70

There are no chirality outliers.

There are no planarity outliers.

5.2 Too-close contacts [i](#)

In the following table, the Non-H and H(model) columns list the number of non-hydrogen atoms and hydrogen atoms in the chain respectively. The H(added) column lists the number of hydrogen atoms added and optimized by MolProbity. The Clashes column lists the number of clashes within the asymmetric unit, whereas Symm-Clashes lists symmetry-related clashes.

Mol	Chain	Non-H	H(model)	H(added)	Clashes	Symm-Clashes
1	A	8341	0	4187	229	0
2	A	24	0	0	0	0
3	A	18	0	0	0	0
4	A	28	0	52	0	0
5	A	30	0	35	2	0
6	A	30	0	0	0	0
7	A	11	0	0	1	0
All	All	8482	0	4274	229	0

The all-atom clashscore is defined as the number of clashes found per 1000 atoms (including hydrogen atoms). The all-atom clashscore for this structure is 18.

All (229) close contacts within the same asymmetric unit are listed below, sorted by their clash magnitude.

Atom-1	Atom-2	Interatomic distance (Å)	Clash overlap (Å)
1:A:360:C:H2'	1:A:361:C:H6	1.29	0.97
1:A:360:C:H2'	1:A:361:C:C6	2.05	0.91
1:A:139:C:H2'	1:A:140:A:H8	1.36	0.90
1:A:6:C:C5	1:A:286:C:C4	2.65	0.84
1:A:114:G:C6	1:A:115:A:C2	2.67	0.83
1:A:329:A:H2'	1:A:330:A:H8	1.45	0.79
1:A:244:G:O6	5:A:446:EPE:H91	1.84	0.78

Continued on next page...

Continued from previous page...

Atom-1	Atom-2	Interatomic distance (Å)	Clash overlap (Å)
1:A:138:A:N1	1:A:224:A:O2'	2.14	0.78
1:A:318:A:O2'	1:A:319:A:H5'	1.86	0.74
1:A:361:C:H2'	1:A:362:G:H8	1.53	0.73
1:A:329:A:H2'	1:A:330:A:C8	2.24	0.72
1:A:324:G:O6	7:A:501:HOH:O	2.07	0.72
1:A:294:G:O6	1:A:324:G:N2	2.23	0.72
1:A:362:G:H2'	1:A:363:U:C6	2.24	0.72
1:A:314:G:H2'	1:A:315:G:H8	1.56	0.70
1:A:134:A:O2'	1:A:135:G:H5'	1.92	0.70
1:A:290:A:C2	1:A:291:G:O6	2.46	0.68
1:A:27:A:H2'	1:A:28:G:O4'	1.94	0.67
1:A:174:A:H4'	1:A:238:U:O2'	1.95	0.67
1:A:361:C:O2	1:A:362:G:C8	2.47	0.67
1:A:384:U:O2	1:A:385:G:C8	2.47	0.67
1:A:140:A:C4	1:A:141:C:C6	2.83	0.66
1:A:324:G:O5'	1:A:324:G:H8	1.78	0.66
1:A:143:A:N6	1:A:144:A:C6	2.64	0.65
1:A:166:A:C2	1:A:212:G:C2	2.84	0.65
1:A:237:A:O2'	1:A:238:U:OP1	2.11	0.64
1:A:359:G:H2'	1:A:360:C:C6	2.32	0.64
1:A:243:G:H5''	1:A:244:G:OP2	1.98	0.64
1:A:152:U:H4'	1:A:153:G:OP2	1.97	0.64
1:A:222:A:O2'	1:A:223:A:H5''	1.98	0.63
1:A:228:A:H2'	1:A:229:G:H8	1.62	0.63
1:A:360:C:C2	1:A:361:C:C5	2.87	0.63
1:A:314:G:H2'	1:A:315:G:C8	2.33	0.63
1:A:276:A:H2'	1:A:277:A:C8	2.34	0.63
1:A:114:G:C6	1:A:115:A:N1	2.68	0.62
1:A:139:C:H2'	1:A:140:A:C8	2.27	0.62
1:A:317:G:O2'	1:A:318:A:H5''	1.99	0.62
1:A:361:C:H2'	1:A:362:G:C8	2.34	0.61
1:A:43:A:H2'	1:A:44:C:C6	2.36	0.60
1:A:162:U:H3'	1:A:163:A:H5''	1.81	0.60
1:A:229:G:H2'	1:A:230:C:C6	2.36	0.60
1:A:130:U:H2'	1:A:131:C:C6	2.35	0.60
1:A:287:A:H8	1:A:287:A:P	2.25	0.60
1:A:167:A:C3'	1:A:168:U:H5'	2.32	0.59
1:A:137:A:H4'	1:A:138:A:O5'	2.02	0.59
1:A:222:A:C2	1:A:224:A:C2	2.90	0.59
1:A:334:U:O2'	1:A:335:G:OP1	2.20	0.59
1:A:334:U:HO2'	1:A:335:G:P	2.25	0.59

Continued on next page...

Continued from previous page...

Atom-1	Atom-2	Interatomic distance (Å)	Clash overlap (Å)
1:A:327:A:C5	1:A:328:C:C5	2.91	0.59
1:A:138:A:OP1	1:A:139:C:C5	2.56	0.58
1:A:353:U:O3'	1:A:390:G:N2	2.36	0.58
1:A:140:A:C5	1:A:141:C:C5	2.92	0.58
1:A:224:A:H4'	1:A:225:U:O5'	2.03	0.58
1:A:300:G:HO2'	1:A:317:G:H1	1.52	0.57
1:A:206:A:O2'	1:A:207:A:OP1	2.16	0.57
1:A:166:A:H2'	1:A:167:A:O4'	2.05	0.57
1:A:386:G:C2	1:A:387:U:C6	2.92	0.57
1:A:327:A:C6	1:A:328:C:C5	2.92	0.57
1:A:267:G:C2	1:A:285:U:C5	2.92	0.57
1:A:51:G:C2	1:A:52:G:C8	2.92	0.56
1:A:334:U:O2'	1:A:335:G:P	2.62	0.56
1:A:329:A:C2	1:A:330:A:C5	2.93	0.56
1:A:328:C:H2'	1:A:329:A:H8	1.71	0.56
1:A:277:A:H2'	1:A:278:A:C8	2.41	0.56
1:A:167:A:H2'	1:A:168:U:H5'	1.87	0.56
1:A:17:U:H2'	1:A:18:G:C8	2.41	0.55
1:A:141:C:C2'	1:A:142:G:O5'	2.54	0.55
1:A:141:C:H2'	1:A:142:G:O5'	2.05	0.55
1:A:298:U:C4	1:A:299:A:C5	2.95	0.55
1:A:146:U:H2'	1:A:147:U:C6	2.42	0.55
1:A:151:A:N3	1:A:151:A:H2'	2.21	0.55
1:A:303:C:OP2	1:A:303:C:H6	1.89	0.55
1:A:324:G:C6	1:A:325:G:N1	2.75	0.55
1:A:138:A:OP1	1:A:139:C:H5	1.89	0.55
1:A:141:C:C2	1:A:142:G:C8	2.95	0.55
1:A:297:A:O2'	1:A:298:U:O5'	2.25	0.54
1:A:46:G:O2'	1:A:47:U:H5'	2.07	0.54
1:A:167:A:C2'	1:A:168:U:H5'	2.36	0.54
1:A:6:C:C6	1:A:286:C:C4	2.95	0.54
1:A:297:A:C2'	1:A:298:U:O5'	2.56	0.54
1:A:134:A:C2'	1:A:135:G:H5'	2.39	0.53
1:A:254:A:H2'	1:A:255:U:O4'	2.08	0.53
1:A:62:C:O2'	1:A:63:A:H5'	2.09	0.53
1:A:358:C:H2'	1:A:359:G:O4'	2.08	0.53
1:A:131:C:C2	1:A:233:A:C2	2.96	0.52
1:A:387:U:C2'	1:A:388:G:H5'	2.39	0.52
1:A:292:A:H61	1:A:325:G:H1'	1.73	0.52
1:A:222:A:O2'	1:A:223:A:C5'	2.57	0.52
1:A:108:G:H2'	1:A:108:G:O5'	2.10	0.52

Continued on next page...

Continued from previous page...

Atom-1	Atom-2	Interatomic distance (Å)	Clash overlap (Å)
1:A:6:C:C5	1:A:286:C:N4	2.77	0.52
1:A:7:C:H2'	1:A:8:C:C6	2.45	0.52
1:A:186:A:H2'	1:A:187:A:O4'	2.10	0.52
1:A:137:A:O2'	1:A:138:A:P	2.67	0.52
1:A:120:A:OP1	1:A:237:A:O2'	2.28	0.52
1:A:382:G:C6	1:A:383:G:N7	2.78	0.52
1:A:140:A:C4	1:A:141:C:C5	2.99	0.51
1:A:359:G:H2'	1:A:360:C:H6	1.75	0.51
1:A:267:G:N3	1:A:285:U:C5	2.79	0.51
1:A:360:C:O2'	1:A:361:C:H5'	2.10	0.51
1:A:140:A:H5''	1:A:141:C:OP2	2.10	0.51
1:A:7:C:H2'	1:A:8:C:H6	1.76	0.50
1:A:104:G:H5''	1:A:105:A:H5'	1.93	0.50
1:A:166:A:C2	1:A:212:G:N2	2.80	0.50
1:A:202:U:H2'	1:A:202:U:O2	2.10	0.50
1:A:386:G:C2	1:A:387:U:C5	3.00	0.50
1:A:148:C:H2'	1:A:149:A:H8	1.77	0.49
1:A:298:U:C4	1:A:299:A:C6	3.00	0.49
1:A:302:A:C6	1:A:318:A:C8	3.00	0.49
1:A:61:A:C5	1:A:62:C:C5	3.00	0.49
1:A:253:C:H6	1:A:253:C:O5'	1.95	0.49
1:A:137:A:HO2'	1:A:138:A:P	2.36	0.49
1:A:81:G:O2'	1:A:82:U:H5'	2.13	0.48
1:A:183:A:O2'	1:A:369:G:N2	2.47	0.48
1:A:174:A:C2	1:A:192:A:C4	3.00	0.48
1:A:244:G:O6	5:A:446:EPE:C9	2.58	0.48
1:A:267:G:H1'	1:A:285:U:O4	2.14	0.48
1:A:364:A:C2	1:A:380:A:C2	3.02	0.48
1:A:362:G:H2'	1:A:363:U:H6	1.77	0.48
1:A:293:A:H2'	1:A:294:G:O4'	2.13	0.48
1:A:32:G:H2'	1:A:34:G:N7	2.29	0.47
1:A:139:C:C2'	1:A:140:A:O5'	2.63	0.47
1:A:326:A:C6	1:A:327:A:C4	3.02	0.47
1:A:63:A:H2'	1:A:64:G:C8	2.50	0.47
1:A:296:C:H2'	1:A:297:A:C8	2.50	0.47
1:A:114:G:C5	1:A:115:A:N1	2.82	0.47
1:A:209:G:C5	1:A:210:U:C5	3.02	0.47
1:A:70:C:O2	1:A:70:C:H2'	2.14	0.46
1:A:359:G:C5	1:A:360:C:C4	3.04	0.46
1:A:66:U:H2'	1:A:67:A:C8	2.51	0.46
1:A:384:U:H2'	1:A:385:G:H8	1.79	0.46

Continued on next page...

Continued from previous page...

Atom-1	Atom-2	Interatomic distance (Å)	Clash overlap (Å)
1:A:143:A:N6	1:A:144:A:N1	2.64	0.46
1:A:307:G:H2'	1:A:307:G:N3	2.30	0.46
1:A:32:G:N2	1:A:34:G:H3'	2.30	0.46
1:A:93:A:H2	1:A:281:G:N3	2.14	0.46
1:A:103:U:H2'	1:A:104:G:C8	2.50	0.46
1:A:6:C:C6	1:A:286:C:C2	3.04	0.46
1:A:25:A:O4'	1:A:66:U:H1'	2.16	0.45
1:A:209:G:H2'	1:A:210:U:O4'	2.16	0.45
1:A:6:C:C6	1:A:286:C:N3	2.84	0.45
1:A:229:G:C2	1:A:230:C:C2	3.04	0.45
1:A:167:A:H5''	1:A:167:A:H8	1.80	0.45
1:A:318:A:HO2'	1:A:319:A:H5'	1.81	0.45
1:A:60:A:H2'	1:A:61:A:O4'	2.16	0.45
1:A:6:C:C4	1:A:286:C:N4	2.84	0.45
1:A:169:G:H2'	1:A:170:G:O4'	2.16	0.45
1:A:134:A:C6	1:A:144:A:C6	3.04	0.45
1:A:360:C:H2'	1:A:361:C:C5	2.49	0.45
1:A:114:G:C5	1:A:115:A:C2	3.05	0.45
1:A:147:U:H2'	1:A:148:C:H6	1.82	0.45
1:A:315:G:N2	1:A:316:G:H1'	2.32	0.45
1:A:64:G:H2'	1:A:65:U:H6	1.82	0.45
1:A:346:C:H2'	1:A:347:U:O4'	2.17	0.45
1:A:63:A:H2'	1:A:64:G:H8	1.82	0.44
1:A:134:A:H2'	1:A:135:G:C8	2.51	0.44
1:A:167:A:C2'	1:A:168:U:C5'	2.95	0.44
1:A:305:C:H3'	1:A:305:C:H6	1.82	0.44
1:A:382:G:C2	1:A:383:G:C8	3.05	0.44
1:A:167:A:C2	1:A:211:U:C2	3.06	0.44
1:A:174:A:H4'	1:A:239:G:H5'	1.99	0.44
1:A:174:A:H4'	1:A:238:U:HO2'	1.82	0.44
1:A:236:G:O4'	1:A:370:A:C8	2.70	0.44
1:A:302:A:H2'	1:A:303:C:O4'	2.18	0.44
1:A:387:U:H2'	1:A:388:G:H5'	2.00	0.44
1:A:3:G:C2	1:A:105:A:C2	3.06	0.44
1:A:68:G:H1	1:A:119:C:H42	1.65	0.44
1:A:167:A:C3'	1:A:168:U:C5'	2.96	0.44
1:A:328:C:C2	1:A:329:A:C8	3.05	0.44
1:A:79:G:C2	1:A:80:G:C8	3.06	0.44
1:A:279:C:H2'	1:A:280:A:O4'	2.18	0.44
1:A:38:C:O2'	1:A:39:C:H5'	2.18	0.43
1:A:139:C:H2'	1:A:140:A:O5'	2.17	0.43

Continued on next page...

Continued from previous page...

Atom-1	Atom-2	Interatomic distance (Å)	Clash overlap (Å)
1:A:133:G:N2	1:A:231:A:C4	2.86	0.43
1:A:228:A:H2'	1:A:229:G:C8	2.49	0.43
1:A:290:A:C2	1:A:291:G:C6	3.06	0.43
1:A:178:U:O5'	1:A:178:U:H6	2.00	0.43
1:A:268:A:H4'	1:A:298:U:O4'	2.17	0.43
1:A:6:C:H42	1:A:266:G:H1	1.65	0.43
1:A:359:G:O2'	1:A:360:C:H5'	2.18	0.43
1:A:381:C:C6	1:A:381:C:H3'	2.54	0.43
1:A:110:A:N3	1:A:110:A:H2'	2.33	0.43
1:A:369:G:O2'	1:A:372:C:N4	2.52	0.43
1:A:61:A:H2'	1:A:62:C:H6	1.83	0.43
1:A:278:A:O5'	1:A:278:A:H8	2.02	0.43
1:A:57:A:C2	1:A:200:U:C2	3.07	0.43
1:A:315:G:C2	1:A:316:G:C8	3.06	0.43
1:A:141:C:H2'	1:A:142:G:C5'	2.49	0.43
1:A:147:U:H2'	1:A:148:C:C6	2.53	0.43
1:A:228:A:C4	1:A:229:G:C8	3.07	0.42
1:A:137:A:O2'	1:A:138:A:OP2	2.31	0.42
1:A:139:C:C2'	1:A:140:A:H8	2.18	0.42
1:A:95:A:C5	1:A:96:U:C5	3.07	0.42
1:A:373:G:O5'	1:A:373:G:H8	2.02	0.42
1:A:108:G:O5'	1:A:108:G:C2'	2.67	0.42
1:A:194:G:H1'	1:A:240:A:O2'	2.20	0.42
1:A:58:G:O2'	1:A:59:U:P	2.78	0.42
1:A:361:C:C2	1:A:362:G:N7	2.88	0.42
1:A:3:G:C2	1:A:4:U:H1'	2.55	0.42
1:A:17:U:H2'	1:A:18:G:H8	1.84	0.42
1:A:81:G:C2'	1:A:82:U:H5'	2.50	0.42
1:A:100:A:H2'	1:A:101:U:O4'	2.20	0.42
1:A:358:C:O2	1:A:359:G:H1'	2.20	0.42
1:A:142:G:H2'	1:A:144:A:OP2	2.20	0.42
1:A:312:C:O2'	1:A:313:A:N3	2.46	0.42
1:A:328:C:H2'	1:A:329:A:C8	2.52	0.42
1:A:385:G:C2	1:A:386:G:C4	3.08	0.42
1:A:195:U:H5''	1:A:195:U:C6	2.55	0.41
1:A:148:C:H2'	1:A:149:A:C8	2.54	0.41
1:A:167:A:H2'	1:A:168:U:C5'	2.50	0.41
1:A:179:G:H5''	1:A:180:C:O5'	2.20	0.41
1:A:181:A:H2'	1:A:182:U:O4'	2.20	0.41
1:A:241:A:H2'	1:A:242:G:H8	1.85	0.41
1:A:306:U:C4	1:A:307:G:N7	2.88	0.41

Continued on next page...

Continued from previous page...

Atom-1	Atom-2	Interatomic distance (Å)	Clash overlap (Å)
1:A:340:U:O2	1:A:340:U:H2'	2.19	0.41
1:A:228:A:N3	1:A:229:G:C8	2.88	0.41
1:A:141:C:O2'	1:A:142:G:H5'	2.21	0.41
1:A:298:U:C5	1:A:299:A:C5	3.08	0.41
1:A:65:U:H5''	1:A:66:U:O5'	2.21	0.41
1:A:273:U:H2'	1:A:274:G:C8	2.56	0.41
1:A:92:G:H2'	1:A:93:A:C8	2.56	0.41
1:A:283:A:C6	1:A:284:G:C4	3.09	0.41
1:A:78:A:H2'	1:A:79:G:H5'	2.03	0.41
1:A:102:C:C4	1:A:103:U:C5	3.09	0.41
1:A:114:G:N7	1:A:115:A:C6	2.89	0.41
1:A:177:U:O5'	1:A:177:U:H6	2.04	0.41
1:A:70:C:O2	1:A:70:C:C2'	2.68	0.40
1:A:341:C:H1'	1:A:342:G:OP2	2.21	0.40
1:A:59:U:C2'	1:A:60:A:H5'	2.51	0.40
1:A:75:G:H2'	1:A:76:C:O4'	2.21	0.40
1:A:340:U:O2	1:A:340:U:C2'	2.69	0.40

There are no symmetry-related clashes.

5.3 Torsion angles [i](#)

5.3.1 Protein backbone [i](#)

There are no protein molecules in this entry.

5.3.2 Protein sidechains [i](#)

There are no protein molecules in this entry.

5.3.3 RNA [i](#)

Mol	Chain	Analysed	Backbone Outliers	Pucker Outliers
1	A	389/394 (98%)	144 (37%)	30 (7%)

All (144) RNA backbone outliers are listed below:

Mol	Chain	Res	Type
1	A	4	U

Continued on next page...

Continued from previous page...

Mol	Chain	Res	Type
1	A	6	C
1	A	12	A
1	A	16	G
1	A	25	A
1	A	26	U
1	A	27	A
1	A	29	G
1	A	33	A
1	A	37	U
1	A	40	C
1	A	48	G
1	A	49	A
1	A	50	A
1	A	51	G
1	A	52	G
1	A	55	G
1	A	60	A
1	A	61	A
1	A	64	G
1	A	65	U
1	A	66	U
1	A	68	G
1	A	78	A
1	A	83	G
1	A	84	U
1	A	91	C
1	A	108	G
1	A	109	A
1	A	110	A
1	A	111	G
1	A	116	C
1	A	122	A
1	A	123	C
1	A	134	A
1	A	137	A
1	A	138	A
1	A	139	C
1	A	140	A
1	A	142	G
1	A	143	A
1	A	145	C
1	A	146	U

Continued on next page...

Continued from previous page...

Mol	Chain	Res	Type
1	A	151	A
1	A	152	U
1	A	153	G
1	A	157	C
1	A	158	U
1	A	160	G
1	A	161	G
1	A	162	U
1	A	163	A
1	A	167	A
1	A	168	U
1	A	169	G
1	A	170	G
1	A	174	A
1	A	175	G
1	A	180	C
1	A	181	A
1	A	198	U
1	A	200	U
1	A	202	U
1	A	203	G
1	A	206	A
1	A	207	A
1	A	208	A
1	A	210	U
1	A	211	U
1	A	217	A
1	A	218	G
1	A	219	A
1	A	221	U
1	A	222	A
1	A	223	A
1	A	224	A
1	A	225	U
1	A	228	A
1	A	232	G
1	A	236	G
1	A	238	U
1	A	245	A
1	A	246	A
1	A	247	A
1	A	248	G

Continued on next page...

Continued from previous page...

Mol	Chain	Res	Type
1	A	260	A
1	A	265	G
1	A	271	U
1	A	277	A
1	A	279	C
1	A	281	G
1	A	285	U
1	A	286	C
1	A	287	A
1	A	289	C
1	A	290	A
1	A	291	G
1	A	292	A
1	A	295	U
1	A	296	C
1	A	298	U
1	A	299	A
1	A	300	G
1	A	301	U
1	A	303	C
1	A	306	U
1	A	307	G
1	A	308	U
1	A	309	U
1	A	311	G
1	A	312	C
1	A	313	A
1	A	314	G
1	A	316	G
1	A	318	A
1	A	330	A
1	A	333	A
1	A	334	U
1	A	335	G
1	A	337	C
1	A	338	G
1	A	339	U
1	A	340	U
1	A	341	C
1	A	342	G
1	A	343	C
1	A	348	A

Continued on next page...

Continued from previous page...

Mol	Chain	Res	Type
1	A	349	A
1	A	354	G
1	A	355	A
1	A	356	A
1	A	360	C
1	A	366	A
1	A	369	G
1	A	370	A
1	A	372	C
1	A	375	U
1	A	377	C
1	A	382	G
1	A	384	U
1	A	388	G
1	A	389	U
1	A	390	G
1	A	391	G

All (30) RNA pucker outliers are listed below:

Mol	Chain	Res	Type
1	A	25	A
1	A	50	A
1	A	82	U
1	A	108	G
1	A	115	A
1	A	137	A
1	A	138	A
1	A	139	C
1	A	142	G
1	A	152	U
1	A	167	A
1	A	168	U
1	A	174	A
1	A	206	A
1	A	222	A
1	A	224	A
1	A	245	A
1	A	285	U
1	A	286	C
1	A	291	G
1	A	297	A

Continued on next page...

Continued from previous page...

Mol	Chain	Res	Type
1	A	299	A
1	A	320	G
1	A	333	A
1	A	334	U
1	A	340	U
1	A	341	C
1	A	348	A
1	A	369	G
1	A	388	G

5.4 Non-standard residues in protein, DNA, RNA chains [i](#)

There are no non-standard protein/DNA/RNA residues in this entry.

5.5 Carbohydrates [i](#)

There are no monosaccharides in this entry.

5.6 Ligand geometry [i](#)

Of 47 ligands modelled in this entry, 42 are monoatomic - leaving 5 for Mogul analysis.

In the following table, the Counts columns list the number of bonds (or angles) for which Mogul statistics could be retrieved, the number of bonds (or angles) that are observed in the model and the number of bonds (or angles) that are defined in the Chemical Component Dictionary. The Link column lists molecule types, if any, to which the group is linked. The Z score for a bond length (or angle) is the number of standard deviations the observed value is removed from the expected value. A bond length (or angle) with $|Z| > 2$ is considered an outlier worth inspection. RMSZ is the root-mean-square of all Z scores of the bond lengths (or angles).

Mol	Type	Chain	Res	Link	Bond lengths			Bond angles		
					Counts	RMSZ	# Z > 2	Counts	RMSZ	# Z > 2
4	SPM	A	444	-	13,13,13	0.26	0	12,12,12	0.37	0
6	VTE	A	447	2	29,33,33	4.88	21 (72%)	37,47,47	1.66	10 (27%)
5	EPE	A	445	-	15,15,15	0.93	1 (6%)	18,20,20	1.32	2 (11%)
4	SPM	A	443	-	13,13,13	0.17	0	12,12,12	0.35	0
5	EPE	A	446	-	15,15,15	0.61	0	18,20,20	0.77	0

In the following table, the Chirals column lists the number of chiral outliers, the number of chiral centers analysed, the number of these observed in the model and the number defined in the Chemical Component Dictionary. Similar counts are reported in the Torsion and Rings columns.

'-' means no outliers of that kind were identified.

Mol	Type	Chain	Res	Link	Chirals	Torsions	Rings
4	SPM	A	444	-	-	7/11/11/11	-
6	VTE	A	447	2	-	7/14/25/25	0/4/4/4
5	EPE	A	445	-	-	3/9/19/19	0/1/1/1
4	SPM	A	443	-	-	8/11/11/11	-
5	EPE	A	446	-	-	8/9/19/19	0/1/1/1

All (22) bond length outliers are listed below:

Mol	Chain	Res	Type	Atoms	Z	Observed(Å)	Ideal(Å)
6	A	447	VTE	C05-N06	-15.93	1.10	1.47
6	A	447	VTE	C02-N03	9.86	1.55	1.33
6	A	447	VTE	C27-C25	7.29	1.49	1.38
6	A	447	VTE	C19-C17	5.64	1.59	1.49
6	A	447	VTE	C08-C07	-5.43	1.32	1.51
6	A	447	VTE	C09-C10	-5.30	1.33	1.51
6	A	447	VTE	O26-C25	5.01	1.46	1.36
6	A	447	VTE	O01-C02	-4.57	1.14	1.23
6	A	447	VTE	C30-C11	4.30	1.44	1.37
6	A	447	VTE	C20-C19	4.17	1.45	1.39
6	A	447	VTE	C25-C23	-4.04	1.35	1.40
6	A	447	VTE	C20-C21	3.82	1.44	1.38
6	A	447	VTE	C07-N06	3.48	1.54	1.47
6	A	447	VTE	C16-C17	3.45	1.57	1.50
6	A	447	VTE	O24-C23	3.38	1.44	1.37
5	A	445	EPE	O1S-S	3.17	1.54	1.45
6	A	447	VTE	C11-C02	2.93	1.56	1.50
6	A	447	VTE	C29-C14	-2.79	1.37	1.43
6	A	447	VTE	C10-N06	2.76	1.52	1.47
6	A	447	VTE	C12-C11	2.74	1.44	1.39
6	A	447	VTE	O22-C21	2.27	1.41	1.36
6	A	447	VTE	C30-C29	2.17	1.46	1.42

All (12) bond angle outliers are listed below:

Mol	Chain	Res	Type	Atoms	Z	Observed(°)	Ideal(°)
6	A	447	VTE	C27-C19-C20	-3.71	115.17	119.63
6	A	447	VTE	O22-C21-C20	3.67	129.30	119.46
5	A	445	EPE	O3S-S-O2S	3.41	119.62	111.27
6	A	447	VTE	O22-C21-C23	-3.36	109.23	117.90
5	A	445	EPE	O1S-S-C10	-3.18	103.09	106.92

Continued on next page...

Continued from previous page...

Mol	Chain	Res	Type	Atoms	Z	Observed(°)	Ideal(°)
6	A	447	VTE	C19-C27-C25	2.64	122.33	120.09
6	A	447	VTE	C05-N06-C10	2.62	120.57	113.29
6	A	447	VTE	C20-C19-C17	2.43	125.26	119.91
6	A	447	VTE	C19-C17-C16	-2.40	116.85	120.68
6	A	447	VTE	C07-N06-C10	2.37	106.35	104.04
6	A	447	VTE	O26-C25-C27	2.19	125.33	119.46
6	A	447	VTE	C13-C12-C11	-2.13	118.38	120.79

There are no chirality outliers.

All (33) torsion outliers are listed below:

Mol	Chain	Res	Type	Atoms
5	A	445	EPE	S-C10-C9-N1
5	A	445	EPE	C9-C10-S-O2S
5	A	446	EPE	S-C10-C9-N1
5	A	446	EPE	C9-C10-S-O1S
6	A	447	VTE	C04-C05-N06-C10
6	A	447	VTE	C04-C05-N06-C07
4	A	444	SPM	C7-C8-C9-N10
6	A	447	VTE	N03-C02-C11-C30
5	A	446	EPE	C8-C7-N4-C3
4	A	444	SPM	N5-C6-C7-C8
6	A	447	VTE	O01-C02-C11-C30
6	A	447	VTE	N03-C02-C11-C12
4	A	444	SPM	N10-C11-C12-C13
5	A	446	EPE	N4-C7-C8-O8
6	A	447	VTE	O01-C02-C11-C12
5	A	446	EPE	C9-C10-S-O3S
4	A	443	SPM	C7-C6-N5-C4
4	A	443	SPM	C6-C7-C8-C9
4	A	443	SPM	C8-C9-N10-C11
4	A	444	SPM	C7-C6-N5-C4
4	A	443	SPM	N5-C6-C7-C8
5	A	446	EPE	C10-C9-N1-C2
5	A	446	EPE	C10-C9-N1-C6
4	A	444	SPM	N1-C2-C3-C4
5	A	445	EPE	C9-C10-S-O1S
4	A	444	SPM	C6-C7-C8-C9
4	A	443	SPM	C7-C8-C9-N10
4	A	444	SPM	C11-C12-C13-N14
4	A	443	SPM	C2-C3-C4-N5
6	A	447	VTE	O18-C17-C19-C20

Continued on next page...

Continued from previous page...

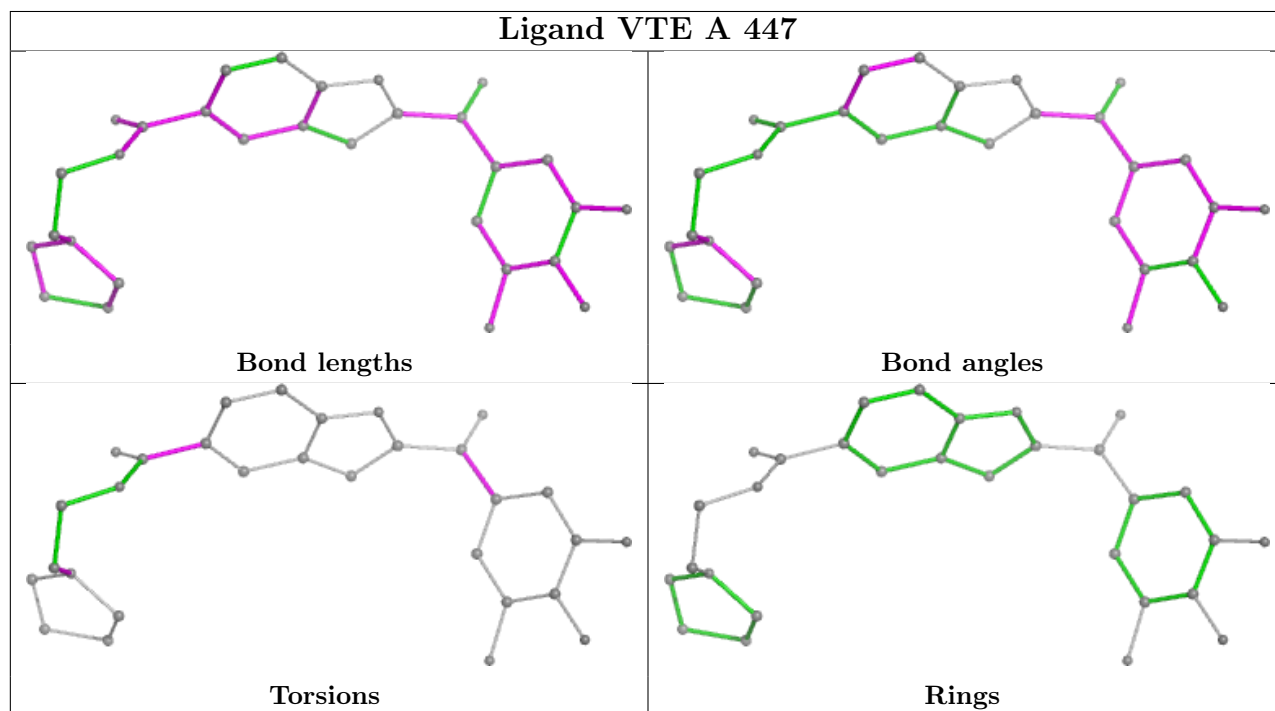
Mol	Chain	Res	Type	Atoms
4	A	443	SPM	C11-C12-C13-N14
4	A	443	SPM	C3-C4-N5-C6
5	A	446	EPE	C9-C10-S-O2S

There are no ring outliers.

1 monomer is involved in 2 short contacts:

Mol	Chain	Res	Type	Clashes	Symm-Clashes
5	A	446	EPE	2	0

The following is a two-dimensional graphical depiction of Mogul quality analysis of bond lengths, bond angles, torsion angles, and ring geometry for all instances of the Ligand of Interest. In addition, ligands with molecular weight > 250 and outliers as shown on the validation Tables will also be included. For torsion angles, if less than 5% of the Mogul distribution of torsion angles is within 10 degrees of the torsion angle in question, then that torsion angle is considered an outlier. Any bond that is central to one or more torsion angles identified as an outlier by Mogul will be highlighted in the graph. For rings, the root-mean-square deviation (RMSD) between the ring in question and similar rings identified by Mogul is calculated over all ring torsion angles. If the average RMSD is greater than 60 degrees and the minimal RMSD between the ring in question and any Mogul-identified rings is also greater than 60 degrees, then that ring is considered an outlier. The outliers are highlighted in purple. The color gray indicates Mogul did not find sufficient equivalents in the CSD to analyse the geometry.



5.7 Other polymers [i](#)

There are no such residues in this entry.

5.8 Polymer linkage issues [i](#)

There are no chain breaks in this entry.

6 Fit of model and data [i](#)

6.1 Protein, DNA and RNA chains [i](#)

In the following table, the column labelled ‘#RSRZ> 2’ contains the number (and percentage) of RSRZ outliers, followed by percent RSRZ outliers for the chain as percentile scores relative to all X-ray entries and entries of similar resolution. The OWAB column contains the minimum, median, 95th percentile and maximum values of the occupancy-weighted average B-factor per residue. The column labelled ‘Q< 0.9’ lists the number of (and percentage) of residues with an average occupancy less than 0.9.

Mol	Chain	Analysed	<RSRZ>	#RSRZ>2	OWAB(Å ²)	Q<0.9
1	A	390/394 (98%)	-0.53	8 (2%) 63 34	81, 131, 252, 326	0

All (8) RSRZ outliers are listed below:

Mol	Chain	Res	Type	RSRZ
1	A	236	G	4.0
1	A	181	A	3.5
1	A	237	A	3.2
1	A	391	G	2.4
1	A	390	G	2.4
1	A	214	U	2.3
1	A	189	A	2.3
1	A	188	A	2.1

6.2 Non-standard residues in protein, DNA, RNA chains [i](#)

There are no non-standard protein/DNA/RNA residues in this entry.

6.3 Carbohydrates [i](#)

There are no monosaccharides in this entry.

6.4 Ligands [i](#)

In the following table, the Atoms column lists the number of modelled atoms in the group and the number defined in the chemical component dictionary. The B-factors column lists the minimum, median, 95th percentile and maximum values of B factors of atoms in the group. The column labelled ‘Q< 0.9’ lists the number of atoms with occupancy less than 0.9.

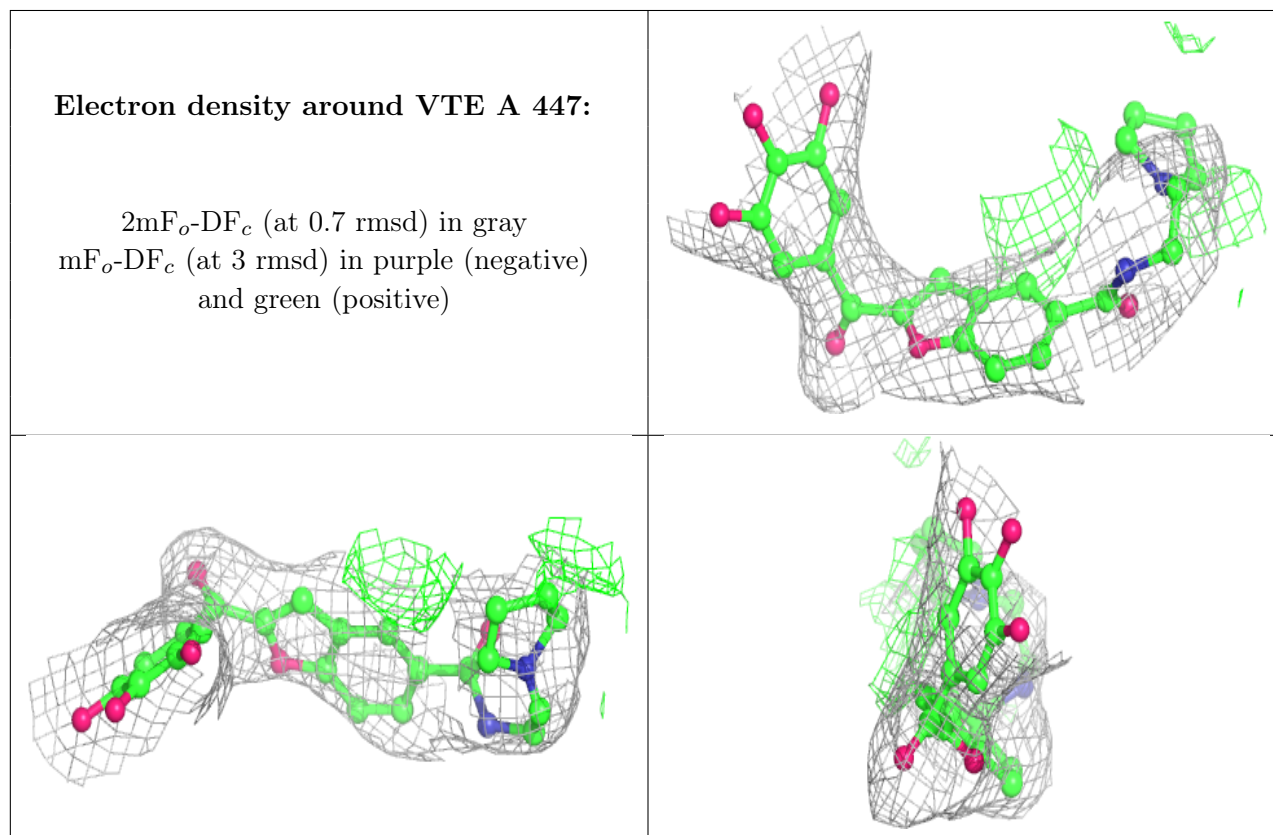
Mol	Type	Chain	Res	Atoms	RSCC	RSR	B-factors(\AA^2)	Q<0.9
2	MG	A	407	1/1	0.04	0.53	113,113,113,113	0
2	MG	A	420	1/1	0.20	1.29	122,122,122,122	0
2	MG	A	422	1/1	0.24	0.25	115,115,115,115	0
3	K	A	435	1/1	0.36	0.17	127,127,127,127	0
3	K	A	441	1/1	0.39	0.34	107,107,107,107	1
2	MG	A	410	1/1	0.58	1.43	104,104,104,104	0
4	SPM	A	444	14/14	0.59	0.41	157,170,192,197	0
3	K	A	432	1/1	0.63	0.43	135,135,135,135	0
2	MG	A	421	1/1	0.73	0.90	122,122,122,122	0
3	K	A	440	1/1	0.76	0.44	153,153,153,153	0
3	K	A	442	1/1	0.78	1.56	141,141,141,141	1
3	K	A	438	1/1	0.78	0.22	156,156,156,156	0
3	K	A	426	1/1	0.79	0.17	155,155,155,155	0
2	MG	A	416	1/1	0.79	0.40	118,118,118,118	0
3	K	A	429	1/1	0.81	0.88	151,151,151,151	0
3	K	A	434	1/1	0.82	0.09	129,129,129,129	0
4	SPM	A	443	14/14	0.84	0.30	152,164,199,214	0
3	K	A	439	1/1	0.85	0.21	146,146,146,146	0
2	MG	A	404	1/1	0.85	0.55	130,130,130,130	0
5	EPE	A	445	15/15	0.86	0.25	188,233,262,273	0
2	MG	A	423	1/1	0.87	0.37	107,107,107,107	0
2	MG	A	409	1/1	0.88	1.08	111,111,111,111	0
2	MG	A	412	1/1	0.88	0.18	112,112,112,112	0
3	K	A	428	1/1	0.88	0.20	161,161,161,161	0
3	K	A	427	1/1	0.89	0.38	133,133,133,133	0
3	K	A	425	1/1	0.89	0.60	168,168,168,168	0
5	EPE	A	446	15/15	0.90	0.20	141,192,216,222	0
2	MG	A	415	1/1	0.91	0.92	97,97,97,97	0
3	K	A	430	1/1	0.92	0.36	158,158,158,158	0
6	VTE	A	447	30/30	0.92	0.14	111,203,233,241	0
2	MG	A	418	1/1	0.93	0.15	152,152,152,152	0
2	MG	A	408	1/1	0.93	0.64	89,89,89,89	0
2	MG	A	406	1/1	0.93	0.28	125,125,125,125	0
2	MG	A	413	1/1	0.94	0.51	106,106,106,106	0
2	MG	A	411	1/1	0.94	0.62	119,119,119,119	0
2	MG	A	401	1/1	0.94	0.22	118,118,118,118	0
3	K	A	433	1/1	0.94	0.15	122,122,122,122	0
2	MG	A	417	1/1	0.95	0.38	89,89,89,89	0
3	K	A	436	1/1	0.95	0.08	132,132,132,132	0
2	MG	A	402	1/1	0.95	0.18	97,97,97,97	0
3	K	A	431	1/1	0.95	0.40	127,127,127,127	0
2	MG	A	405	1/1	0.97	0.44	109,109,109,109	0
2	MG	A	419	1/1	0.97	0.55	106,106,106,106	0

Continued on next page...

Continued from previous page...

Mol	Type	Chain	Res	Atoms	RSCC	RSR	B-factors(\AA^2)	Q<0.9
2	MG	A	403	1/1	0.98	0.17	106,106,106,106	0
2	MG	A	424	1/1	0.99	0.22	107,107,107,107	0
3	K	A	437	1/1	0.99	0.15	110,110,110,110	0
2	MG	A	414	1/1	0.99	0.28	100,100,100,100	0

The following is a graphical depiction of the model fit to experimental electron density of all instances of the Ligand of Interest. In addition, ligands with molecular weight > 250 and outliers as shown on the geometry validation Tables will also be included. Each fit is shown from different orientation to approximate a three-dimensional view.



6.5 Other polymers [\(i\)](#)

There are no such residues in this entry.