



Full wwPDB X-ray Structure Validation Report ⓘ

Jun 12, 2024 – 07:20 AM EDT

PDB ID : 1OTY
Title : Native PNP +ALLO
Authors : Ealick, S.E.; Bennett, E.M.; Anand, R.; Secrist, J.A.; Parker, W.B.; Hassan, A.E.; Allan, P.W.; McPherson, D.T.; Sorscher, E.J.
Deposited on : 2003-03-23
Resolution : 2.50 Å(reported)

This is a Full wwPDB X-ray Structure Validation Report for a publicly released PDB entry.

We welcome your comments at validation@mail.wwpdb.org

A user guide is available at

<https://www.wwpdb.org/validation/2017/XrayValidationReportHelp>

with specific help available everywhere you see the ⓘ symbol.

The types of validation reports are described at

<http://www.wwpdb.org/validation/2017/FAQs#types>.

The following versions of software and data (see [references ⓘ](#)) were used in the production of this report:

MolProbity : 4.02b-467
Mogul : 2022.3.0, CSD as543be (2022)
Xtriage (Phenix) : 1.20.1
EDS : 2.36.2
Percentile statistics : 20191225.v01 (using entries in the PDB archive December 25th 2019)
Refmac : 5.8.0158
CCP4 : 7.0.044 (Gargrove)
Ideal geometry (proteins) : Engh & Huber (2001)
Ideal geometry (DNA, RNA) : Parkinson et al. (1996)
Validation Pipeline (wwPDB-VP) : 2.36.2

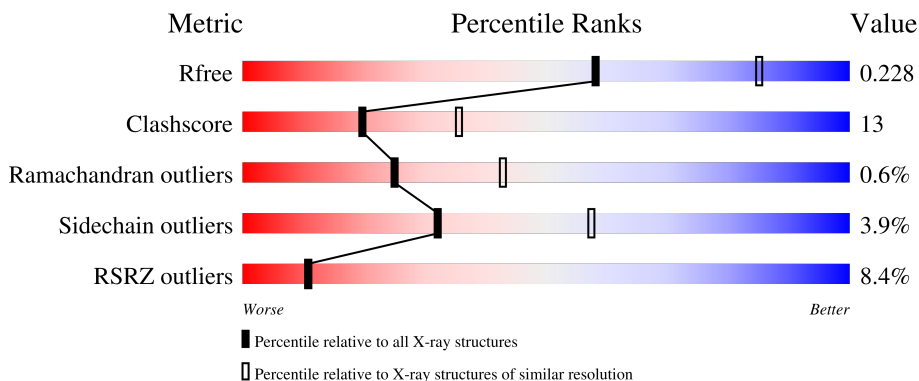
1 Overall quality at a glance

The following experimental techniques were used to determine the structure:

X-RAY DIFFRACTION

The reported resolution of this entry is 2.50 Å.

Percentile scores (ranging between 0-100) for global validation metrics of the entry are shown in the following graphic. The table shows the number of entries on which the scores are based.



Metric	Whole archive (#Entries)	Similar resolution (#Entries, resolution range(Å))
R_{free}	130704	4661 (2.50-2.50)
Clashscore	141614	5346 (2.50-2.50)
Ramachandran outliers	138981	5231 (2.50-2.50)
Sidechain outliers	138945	5233 (2.50-2.50)
RSRZ outliers	127900	4559 (2.50-2.50)

The table below summarises the geometric issues observed across the polymeric chains and their fit to the electron density. The red, orange, yellow and green segments of the lower bar indicate the fraction of residues that contain outliers for ≥ 3 , 2, 1 and 0 types of geometric quality criteria respectively. A grey segment represents the fraction of residues that are not modelled. The numeric value for each fraction is indicated below the corresponding segment, with a dot representing fractions $\leq 5\%$. The upper red bar (where present) indicates the fraction of residues that have poor fit to the electron density. The numeric value is given above the bar.

Mol	Chain	Length	Quality of chain
1	A	238	 8% 73% 26%
1	B	238	 7% 77% 20% •
1	C	238	 11% 71% 27% •

2 Entry composition [i](#)

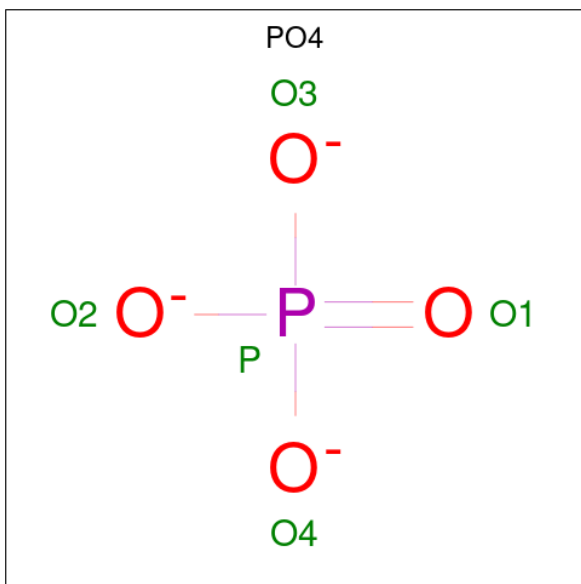
There are 4 unique types of molecules in this entry. The entry contains 5598 atoms, of which 0 are hydrogens and 0 are deuteriums.

In the tables below, the ZeroOcc column contains the number of atoms modelled with zero occupancy, the AltConf column contains the number of residues with at least one atom in alternate conformation and the Trace column contains the number of residues modelled with at most 2 atoms.

- Molecule 1 is a protein called Purine nucleoside phosphorylase.

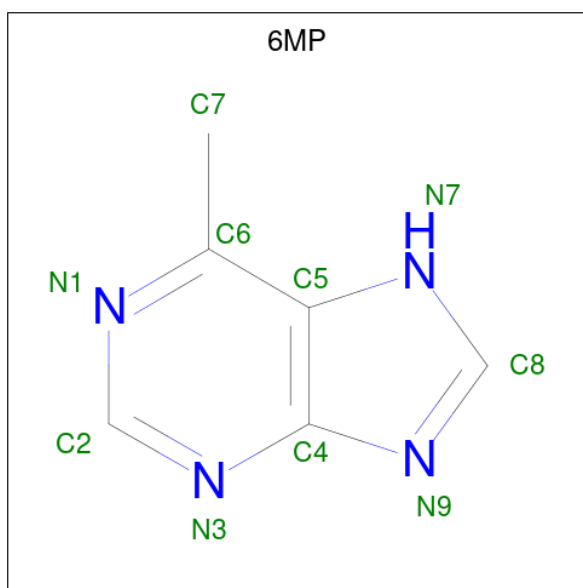
Mol	Chain	Residues	Atoms					ZeroOcc	AltConf	Trace
			Total	C	N	O	S			
1	A	237	Total 1793	C 1132	N 307	O 339	S 15	0	0	0
1	B	237	Total 1793	C 1132	N 307	O 339	S 15	0	0	0
1	C	237	Total 1793	C 1132	N 307	O 339	S 15	0	0	0

- Molecule 2 is PHOSPHATE ION (three-letter code: PO4) (formula: O₄P).



Mol	Chain	Residues	Atoms			ZeroOcc	AltConf
			Total	O	P		
2	A	1	Total 5	O 4	P 1	0	0
2	B	1	Total 5	O 4	P 1	0	0
2	C	1	Total 5	O 4	P 1	0	0

- Molecule 3 is 6-METHYLPURINE (three-letter code: 6MP) (formula: $C_6H_6N_4$).



Mol	Chain	Residues	Atoms	ZeroOcc	AltConf
3	A	1	Total C N 10 6 4	0	0
3	B	1	Total C N 10 6 4	0	0
3	C	1	Total C N 10 6 4	0	0

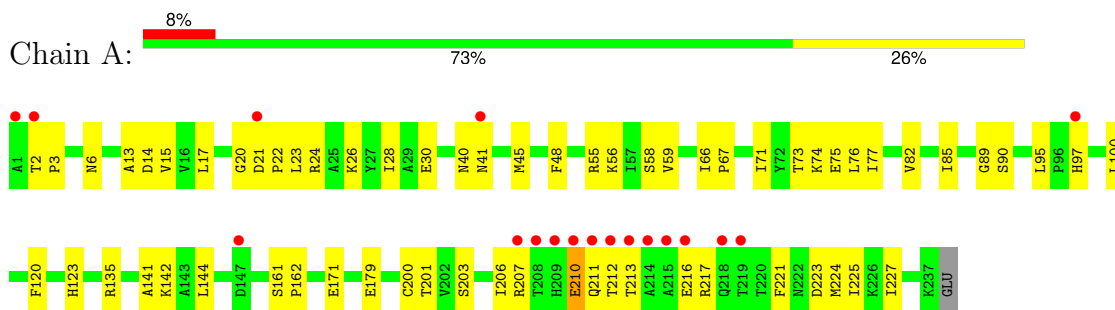
- Molecule 4 is water.

Mol	Chain	Residues	Atoms	ZeroOcc	AltConf
4	A	51	Total O 51 51	0	0
4	B	74	Total O 74 74	0	0
4	C	49	Total O 49 49	0	0

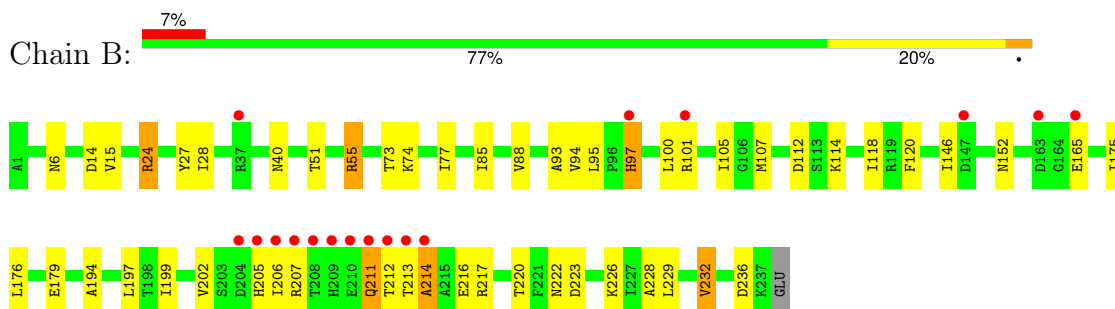
3 Residue-property plots

These plots are drawn for all protein, RNA, DNA and oligosaccharide chains in the entry. The first graphic for a chain summarises the proportions of the various outlier classes displayed in the second graphic. The second graphic shows the sequence view annotated by issues in geometry and electron density. Residues are color-coded according to the number of geometric quality criteria for which they contain at least one outlier: green = 0, yellow = 1, orange = 2 and red = 3 or more. A red dot above a residue indicates a poor fit to the electron density ($RSRZ > 2$). Stretches of 2 or more consecutive residues without any outlier are shown as a green connector. Residues present in the sample, but not in the model, are shown in grey.

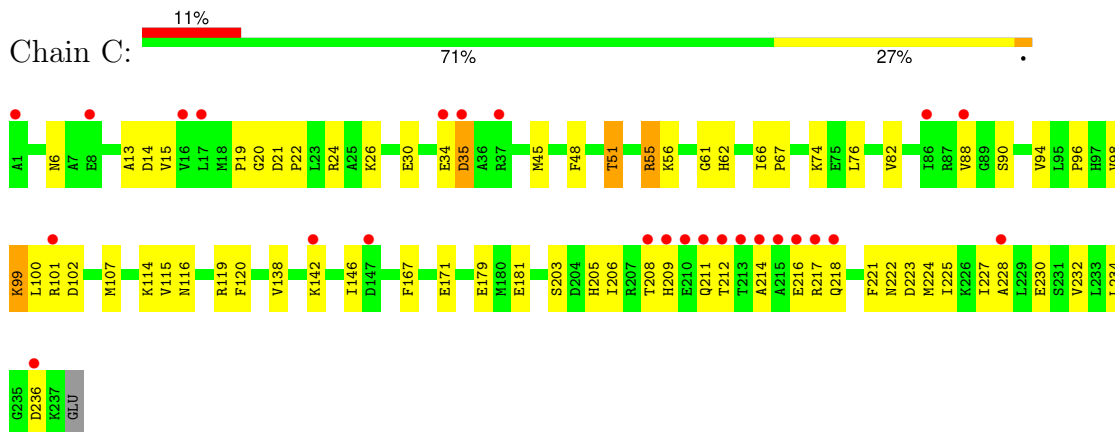
- Molecule 1: Purine nucleoside phosphorylase



- Molecule 1: Purine nucleoside phosphorylase



- Molecule 1: Purine nucleoside phosphorylase



4 Data and refinement statistics

Property	Value	Source
Space group	P 61 2 2	Depositor
Cell constants a, b, c, α , β , γ	119.97Å 119.97Å 240.46Å 90.00° 90.00° 120.00°	Depositor
Resolution (Å)	26.20 – 2.50 26.20 – 2.50	Depositor EDS
% Data completeness (in resolution range)	99.9 (26.20-2.50) 100.0 (26.20-2.50)	Depositor EDS
R_{merge}	0.07	Depositor
R_{sym}	0.07	Depositor
$\langle I/\sigma(I) \rangle$ ¹	7.56 (at 2.50Å)	Xtrriage
Refinement program	CNS 1.0	Depositor
R, R_{free}	0.203 , 0.236 0.192 , 0.228	Depositor DCC
R_{free} test set	3603 reflections (9.98%)	wwPDB-VP
Wilson B-factor (Å ²)	31.3	Xtrriage
Anisotropy	0.309	Xtrriage
Bulk solvent k_{sol} (e/Å ³), B_{sol} (Å ²)	0.37 , 46.5	EDS
L-test for twinning ²	$\langle L \rangle = 0.49$, $\langle L^2 \rangle = 0.32$	Xtrriage
Estimated twinning fraction	No twinning to report.	Xtrriage
F_o, F_c correlation	0.94	EDS
Total number of atoms	5598	wwPDB-VP
Average B, all atoms (Å ²)	35.0	wwPDB-VP

Xtrriage's analysis on translational NCS is as follows: *The largest off-origin peak in the Patterson function is 4.72% of the height of the origin peak. No significant pseudotranslation is detected.*

¹Intensities estimated from amplitudes.

²Theoretical values of $\langle |L| \rangle$, $\langle L^2 \rangle$ for acentric reflections are 0.5, 0.333 respectively for untwinned datasets, and 0.375, 0.2 for perfectly twinned datasets.

5 Model quality [i](#)

5.1 Standard geometry [i](#)

Bond lengths and bond angles in the following residue types are not validated in this section: 6MP, PO4

The Z score for a bond length (or angle) is the number of standard deviations the observed value is removed from the expected value. A bond length (or angle) with $|Z| > 5$ is considered an outlier worth inspection. RMSZ is the root-mean-square of all Z scores of the bond lengths (or angles).

Mol	Chain	Bond lengths		Bond angles	
		RMSZ	# Z >5	RMSZ	# Z >5
1	A	0.34	0/1822	0.60	0/2457
1	B	0.37	0/1822	0.62	0/2457
1	C	0.33	0/1822	0.59	0/2457
All	All	0.35	0/5466	0.60	0/7371

There are no bond length outliers.

There are no bond angle outliers.

There are no chirality outliers.

There are no planarity outliers.

5.2 Too-close contacts [i](#)

In the following table, the Non-H and H(model) columns list the number of non-hydrogen atoms and hydrogen atoms in the chain respectively. The H(added) column lists the number of hydrogen atoms added and optimized by MolProbity. The Clashes column lists the number of clashes within the asymmetric unit, whereas Symm-Clashes lists symmetry-related clashes.

Mol	Chain	Non-H	H(model)	H(added)	Clashes	Symm-Clashes
1	A	1793	0	1791	47	0
1	B	1793	0	1791	40	0
1	C	1793	0	1791	51	1
2	A	5	0	0	0	0
2	B	5	0	0	0	0
2	C	5	0	0	0	0
3	A	10	0	6	0	0
3	B	10	0	6	2	0
3	C	10	0	6	0	0
4	A	51	0	0	1	0

Continued on next page...

Continued from previous page...

Mol	Chain	Non-H	H(model)	H(added)	Clashes	Symm-Clashes
4	B	74	0	0	0	0
4	C	49	0	0	0	0
All	All	5598	0	5391	137	1

The all-atom clashscore is defined as the number of clashes found per 1000 atoms (including hydrogen atoms). The all-atom clashscore for this structure is 13.

All (137) close contacts within the same asymmetric unit are listed below, sorted by their clash magnitude.

Atom-1	Atom-2	Interatomic distance (Å)	Clash overlap (Å)
1:A:21:ASP:HB3	1:A:24:ARG:HD3	1.59	0.84
1:A:142:LYS:HE3	1:A:142:LYS:HA	1.59	0.84
1:A:210:GLU:HG2	1:A:211:GLN:H	1.44	0.80
1:C:94:VAL:HG12	1:C:171:GLU:HB2	1.65	0.79
1:B:101:ARG:HA	1:B:220:THR:HG21	1.66	0.77
1:A:223:ASP:O	1:A:227:ILE:HG12	1.85	0.76
1:A:73:THR:O	1:A:77:ILE:HG12	1.87	0.73
1:C:99:LYS:HD2	1:C:99:LYS:H	1.52	0.73
1:C:55:ARG:HD2	1:C:236:ASP:OD2	1.87	0.73
1:A:22:PRO:HG3	1:A:45:MET:SD	2.30	0.71
1:B:55:ARG:HD2	1:B:236:ASP:OD2	1.91	0.70
1:C:22:PRO:HG3	1:C:45:MET:SD	2.31	0.70
1:A:141:ALA:HA	1:A:227:ILE:HD12	1.73	0.69
1:C:146:ILE:HD13	1:C:223:ASP:HB3	1.75	0.67
1:A:14:ASP:OD1	1:A:15:VAL:HG23	1.95	0.66
1:C:94:VAL:CG1	1:C:171:GLU:HB2	2.26	0.66
1:B:24:ARG:O	1:B:28:ILE:HG12	1.97	0.65
1:A:20:GLY:H	1:A:24:ARG:NH2	1.95	0.65
1:A:24:ARG:O	1:A:28:ILE:HG12	1.97	0.65
1:A:144:LEU:HD12	1:A:227:ILE:HD13	1.79	0.64
1:C:211:GLN:H	1:C:211:GLN:CD	2.01	0.63
1:A:141:ALA:HA	1:A:227:ILE:CD1	2.30	0.62
1:C:26:LYS:HA	1:C:48:PHE:CE2	2.35	0.62
1:C:99:LYS:HG2	1:C:102:ASP:OD1	2.00	0.62
1:B:73:THR:HG22	1:B:85:ILE:HD13	1.82	0.62
1:B:229:LEU:O	1:B:232:VAL:HG13	2.02	0.60
1:B:165:GLU:H	1:B:165:GLU:CD	2.05	0.59
1:A:26:LYS:O	1:A:30:GLU:HG2	2.02	0.59
1:B:6:ASN:H	1:B:40:ASN:ND2	1.99	0.59
1:C:100:LEU:HD12	1:C:100:LEU:H	1.67	0.59
1:B:14:ASP:OD2	1:B:15:VAL:HG23	2.03	0.58

Continued on next page...

Continued from previous page...

Atom-1	Atom-2	Interatomic distance (Å)	Clash overlap (Å)
1:A:6:ASN:H	1:A:40:ASN:ND2	2.01	0.58
1:C:99:LYS:HD2	1:C:99:LYS:N	2.17	0.58
1:C:14:ASP:OD1	1:C:15:VAL:HG13	2.03	0.58
1:B:146:ILE:HD13	1:B:223:ASP:HB3	1.85	0.58
1:B:206:ILE:HD11	3:B:246:6MP:H72	1.85	0.57
1:B:95:LEU:HD12	1:B:176:LEU:HD23	1.87	0.57
1:A:123:HIS:HD2	1:C:114:LYS:NZ	2.04	0.56
1:A:210:GLU:HG2	1:A:211:GLN:N	2.19	0.56
1:A:21:ASP:H	1:A:24:ARG:NH1	2.03	0.56
1:B:226:LYS:NZ	1:B:226:LYS:HB3	2.21	0.56
1:C:205:HIS:HB2	1:C:208:THR:OG1	2.06	0.56
1:C:74:LYS:HD3	1:C:74:LYS:C	2.26	0.56
1:B:101:ARG:NH1	1:B:216:GLU:HB3	2.21	0.54
1:C:76:LEU:HB3	1:C:82:VAL:HG21	1.87	0.54
1:B:197:LEU:HD21	1:B:199:ILE:HD11	1.88	0.54
1:C:90:SER:HB2	1:C:203:SER:OG	2.07	0.54
1:C:62:HIS:CE1	1:C:181:GLU:HG2	2.43	0.54
1:B:105:ILE:HG12	1:B:199:ILE:HD12	1.91	0.53
1:B:146:ILE:CD1	1:B:223:ASP:HB3	2.39	0.53
1:C:138:VAL:O	1:C:142:LYS:HG2	2.08	0.53
1:C:212:THR:HB	1:C:217:ARG:CD	2.39	0.53
1:C:101:ARG:HD3	1:C:216:GLU:HB3	1.91	0.53
1:C:88:VAL:HG23	1:C:88:VAL:O	2.10	0.52
1:A:141:ALA:CA	1:A:227:ILE:HD12	2.39	0.52
1:C:167:PHE:CE2	1:C:206:ILE:HD13	2.45	0.52
1:A:221:PHE:O	1:A:225:ILE:HG12	2.11	0.51
1:A:74:LYS:C	1:A:74:LYS:HD3	2.31	0.51
1:B:212:THR:HG23	1:B:217:ARG:HD2	1.93	0.51
1:C:221:PHE:O	1:C:225:ILE:HG12	2.11	0.50
1:A:100:LEU:H	1:A:100:LEU:HD12	1.76	0.50
1:A:212:THR:OG1	1:A:217:ARG:HD3	2.12	0.49
1:B:88:VAL:HG23	1:B:88:VAL:O	2.12	0.49
1:C:100:LEU:HD12	1:C:100:LEU:N	2.26	0.49
1:A:100:LEU:HD12	1:A:100:LEU:N	2.27	0.49
1:B:93:ALA:HB2	1:B:202:VAL:HG11	1.94	0.49
1:B:6:ASN:H	1:B:40:ASN:HD22	1.61	0.49
1:B:114:LYS:O	1:B:118:ILE:HG12	2.12	0.48
1:A:21:ASP:OD2	1:A:23:LEU:HB2	2.13	0.48
1:B:93:ALA:HB3	1:B:205:HIS:HA	1.95	0.48
1:B:206:ILE:CD1	3:B:246:6MP:H72	2.44	0.48
1:C:230:GLU:O	1:C:234:LEU:HD13	2.14	0.48

Continued on next page...

Continued from previous page...

Atom-1	Atom-2	Interatomic distance (Å)	Clash overlap (Å)
1:B:74:LYS:HD3	1:B:74:LYS:C	2.34	0.48
1:A:210:GLU:CG	1:A:211:GLN:H	2.17	0.48
1:A:95:LEU:HD23	1:A:171:GLU:HG3	1.96	0.48
1:C:214:ALA:HB3	1:C:216:GLU:OE1	2.14	0.47
1:B:27:TYR:HD1	1:B:28:ILE:HD13	1.78	0.47
1:B:213:THR:O	1:B:214:ALA:HB2	2.15	0.47
1:A:95:LEU:HD13	1:A:97:HIS:CE1	2.50	0.47
1:C:218:GLN:HG2	1:C:222:ASN:ND2	2.31	0.46
1:B:222:ASN:O	1:B:226:LYS:HG3	2.16	0.46
1:B:100:LEU:N	1:B:100:LEU:HD22	2.30	0.46
1:C:228:ALA:O	1:C:232:VAL:HG23	2.16	0.46
1:A:2:THR:HB	1:A:3:PRO:HD2	1.97	0.46
1:C:116:ASN:ND2	1:C:119:ARG:HH11	2.14	0.46
1:A:100:LEU:CD2	1:A:210:GLU:HB3	2.46	0.46
1:C:223:ASP:O	1:C:227:ILE:HG13	2.15	0.46
1:C:138:VAL:HG13	1:C:142:LYS:NZ	2.32	0.45
1:C:21:ASP:HA	1:C:22:PRO:HD3	1.87	0.45
1:C:26:LYS:O	1:C:30:GLU:HG3	2.16	0.45
1:C:34:GLU:O	1:C:35:ASP:HB2	2.17	0.45
1:A:2:THR:HB	1:A:3:PRO:CD	2.47	0.45
1:A:89:GLY:O	1:A:200:CYS:HA	2.17	0.45
1:B:51:THR:HA	1:B:55:ARG:O	2.16	0.45
1:A:161:SER:HA	1:A:162:PRO:HD3	1.82	0.45
1:C:26:LYS:NZ	1:C:30:GLU:OE2	2.51	0.44
1:B:14:ASP:OD2	1:B:55:ARG:NH2	2.40	0.44
1:A:90:SER:HB2	1:A:203:SER:HB3	2.00	0.44
1:C:115:VAL:HG23	1:C:116:ASN:N	2.33	0.44
1:A:20:GLY:H	1:A:24:ARG:HH22	1.61	0.44
1:B:77:ILE:HD13	1:B:194:ALA:HB3	1.99	0.44
1:A:17:LEU:O	1:A:59:VAL:HA	2.18	0.44
1:B:165:GLU:CD	1:B:165:GLU:N	2.72	0.43
1:C:88:VAL:HB	1:C:224:MET:HE3	2.01	0.43
1:B:213:THR:HA	1:B:217:ARG:HD3	1.99	0.43
1:C:51:THR:HA	1:C:55:ARG:O	2.19	0.43
1:A:135:ARG:HD2	4:A:255:HOH:O	2.18	0.43
1:C:216:GLU:OE1	1:C:216:GLU:N	2.51	0.43
1:B:94:VAL:HG22	1:B:175:ILE:O	2.19	0.42
1:C:98:VAL:O	1:C:205:HIS:CE1	2.72	0.42
1:C:96:PRO:HD3	1:C:171:GLU:OE2	2.20	0.42
1:A:206:ILE:N	1:A:206:ILE:HD12	2.35	0.42
1:C:24:ARG:HH11	1:C:24:ARG:HG3	1.85	0.42

Continued on next page...

Continued from previous page...

Atom-1	Atom-2	Interatomic distance (Å)	Clash overlap (Å)
1:B:95:LEU:HD13	1:B:97:HIS:NE2	2.35	0.42
1:B:228:ALA:O	1:B:232:VAL:HG12	2.19	0.42
1:B:206:ILE:HG22	1:B:206:ILE:O	2.20	0.42
1:B:212:THR:OG1	1:B:217:ARG:HB2	2.19	0.42
1:C:13:ALA:HB2	1:C:56:LYS:HG2	2.02	0.42
1:A:48:PHE:O	1:A:58:SER:HA	2.20	0.42
1:C:218:GLN:HG2	1:C:222:ASN:HD21	1.84	0.41
1:C:208:THR:O	1:C:209:HIS:HB2	2.19	0.41
1:C:214:ALA:HB3	1:C:216:GLU:CD	2.41	0.41
1:A:71:ILE:O	1:A:75:GLU:HG3	2.21	0.41
1:C:20:GLY:HA2	1:C:62:HIS:CE1	2.55	0.41
1:A:82:VAL:HG11	1:A:85:ILE:HD11	2.02	0.41
1:A:201:THR:HG23	1:A:224:MET:SD	2.60	0.41
1:A:213:THR:OG1	1:A:216:GLU:HG3	2.21	0.41
1:B:93:ALA:HB2	1:B:202:VAL:CG1	2.51	0.41
1:B:226:LYS:HB3	1:B:226:LYS:HZ2	1.86	0.41
1:A:13:ALA:HB2	1:A:56:LYS:HG2	2.01	0.41
1:A:21:ASP:HA	1:A:22:PRO:HD3	1.90	0.41
1:A:210:GLU:O	1:A:211:GLN:HG2	2.20	0.41
1:C:100:LEU:O	1:C:101:ARG:HB2	2.21	0.41
1:A:66:ILE:HB	1:A:67:PRO:HD3	2.02	0.41
1:C:19:PRO:O	1:C:61:GLY:HA2	2.21	0.41
1:C:66:ILE:HB	1:C:67:PRO:HD3	2.03	0.41
1:A:76:LEU:HB3	1:A:82:VAL:HG21	2.03	0.40

All (1) symmetry-related close contacts are listed below. The label for Atom-2 includes the symmetry operator and encoded unit-cell translations to be applied.

Atom-1	Atom-2	Interatomic distance (Å)	Clash overlap (Å)
1:C:107:MET:CE	1:C:107:MET:CE[12_555]	2.15	0.05

5.3 Torsion angles [i](#)

5.3.1 Protein backbone [i](#)

In the following table, the Percentiles column shows the percent Ramachandran outliers of the chain as a percentile score with respect to all X-ray entries followed by that with respect to entries of similar resolution.

The Analysed column shows the number of residues for which the backbone conformation was

analysed, and the total number of residues.

Mol	Chain	Analysed	Favoured	Allowed	Outliers	Percentiles	
1	A	235/238 (99%)	220 (94%)	13 (6%)	2 (1%)	17	31
1	B	235/238 (99%)	220 (94%)	13 (6%)	2 (1%)	17	31
1	C	235/238 (99%)	218 (93%)	17 (7%)	0	100	100
All	All	705/714 (99%)	658 (93%)	43 (6%)	4 (1%)	25	43

All (4) Ramachandran outliers are listed below:

Mol	Chain	Res	Type
1	A	207	ARG
1	A	210	GLU
1	B	211	GLN
1	B	214	ALA

5.3.2 Protein sidechains [i](#)

In the following table, the Percentiles column shows the percent sidechain outliers of the chain as a percentile score with respect to all X-ray entries followed by that with respect to entries of similar resolution.

The Analysed column shows the number of residues for which the sidechain conformation was analysed, and the total number of residues.

Mol	Chain	Analysed	Rotameric	Outliers	Percentiles	
1	A	187/189 (99%)	183 (98%)	4 (2%)	53	78
1	B	187/189 (99%)	176 (94%)	11 (6%)	19	37
1	C	187/189 (99%)	180 (96%)	7 (4%)	34	60
All	All	561/567 (99%)	539 (96%)	22 (4%)	32	57

All (22) residues with a non-rotameric sidechain are listed below:

Mol	Chain	Res	Type
1	A	41	ASN
1	A	55	ARG
1	A	120	PHE
1	A	179	GLU
1	B	24	ARG
1	B	55	ARG
1	B	97	HIS

Continued on next page...

Continued from previous page...

Mol	Chain	Res	Type
1	B	107	MET
1	B	112	ASP
1	B	120	PHE
1	B	152	ASN
1	B	179	GLU
1	B	207	ARG
1	B	211	GLN
1	B	232	VAL
1	C	6	ASN
1	C	35	ASP
1	C	51	THR
1	C	55	ARG
1	C	99	LYS
1	C	120	PHE
1	C	179	GLU

Sometimes sidechains can be flipped to improve hydrogen bonding and reduce clashes. All (11) such sidechains are listed below:

Mol	Chain	Res	Type
1	A	40	ASN
1	A	97	HIS
1	A	116	ASN
1	A	123	HIS
1	B	40	ASN
1	B	152	ASN
1	B	222	ASN
1	C	6	ASN
1	C	116	ASN
1	C	205	HIS
1	C	222	ASN

5.3.3 RNA [i](#)

There are no RNA molecules in this entry.

5.4 Non-standard residues in protein, DNA, RNA chains [i](#)

There are no non-standard protein/DNA/RNA residues in this entry.

5.5 Carbohydrates [i](#)

There are no monosaccharides in this entry.

5.6 Ligand geometry [i](#)

6 ligands are modelled in this entry.

In the following table, the Counts columns list the number of bonds (or angles) for which Mogul statistics could be retrieved, the number of bonds (or angles) that are observed in the model and the number of bonds (or angles) that are defined in the Chemical Component Dictionary. The Link column lists molecule types, if any, to which the group is linked. The Z score for a bond length (or angle) is the number of standard deviations the observed value is removed from the expected value. A bond length (or angle) with $|Z| > 2$ is considered an outlier worth inspection. RMSZ is the root-mean-square of all Z scores of the bond lengths (or angles).

Mol	Type	Chain	Res	Link	Bond lengths			Bond angles		
					Counts	RMSZ	# Z > 2	Counts	RMSZ	# Z > 2
3	6MP	B	246	-	8,11,11	5.41	7 (87%)	6,15,15	1.63	1 (16%)
3	6MP	A	247	-	8,11,11	5.33	7 (87%)	6,15,15	1.64	2 (33%)
3	6MP	C	245	-	8,11,11	5.06	7 (87%)	6,15,15	1.65	1 (16%)
2	PO4	B	249	-	4,4,4	2.08	3 (75%)	6,6,6	0.47	0
2	PO4	C	250	-	4,4,4	1.85	2 (50%)	6,6,6	0.47	0
2	PO4	A	248	-	4,4,4	1.78	2 (50%)	6,6,6	0.47	0

In the following table, the Chirals column lists the number of chiral outliers, the number of chiral centers analysed, the number of these observed in the model and the number defined in the Chemical Component Dictionary. Similar counts are reported in the Torsion and Rings columns. '-' means no outliers of that kind were identified.

Mol	Type	Chain	Res	Link	Chirals	Torsions	Rings
3	6MP	B	246	-	-	-	0/2/2/2
3	6MP	C	245	-	-	-	0/2/2/2
3	6MP	A	247	-	-	-	0/2/2/2

All (28) bond length outliers are listed below:

Mol	Chain	Res	Type	Atoms	Z	Observed(Å)	Ideal(Å)
3	B	246	6MP	C6-N1	10.38	1.41	1.32
3	A	247	6MP	C6-N1	10.27	1.41	1.32
3	C	245	6MP	C6-N1	9.74	1.41	1.32
3	B	246	6MP	C7-C6	6.33	1.54	1.50
3	A	247	6MP	C7-C6	6.20	1.54	1.50

Continued on next page...

Continued from previous page...

Mol	Chain	Res	Type	Atoms	Z	Observed(Å)	Ideal(Å)
3	B	246	6MP	C4-N9	5.62	1.45	1.34
3	C	245	6MP	C7-C6	5.61	1.54	1.50
3	A	247	6MP	C4-N9	5.52	1.44	1.34
3	C	245	6MP	C4-N9	5.46	1.44	1.34
3	B	246	6MP	C2-N3	4.83	1.39	1.32
3	C	245	6MP	C2-N3	4.54	1.39	1.32
3	A	247	6MP	C2-N3	4.53	1.39	1.32
3	B	246	6MP	C4-N3	4.39	1.43	1.37
3	A	247	6MP	C4-N3	4.09	1.43	1.37
3	C	245	6MP	C4-N3	3.93	1.42	1.37
3	A	247	6MP	C6-C5	2.80	1.47	1.43
3	A	247	6MP	C2-N1	2.75	1.38	1.33
3	B	246	6MP	C2-N1	2.64	1.38	1.33
3	C	245	6MP	C2-N1	2.62	1.38	1.33
2	B	249	PO4	P-O4	-2.40	1.47	1.54
2	B	249	PO4	P-O3	-2.29	1.48	1.54
3	C	245	6MP	C6-C5	2.27	1.46	1.43
3	B	246	6MP	C6-C5	2.21	1.46	1.43
2	C	250	PO4	P-O2	-2.20	1.48	1.54
2	B	249	PO4	P-O2	-2.18	1.48	1.54
2	A	248	PO4	P-O2	-2.05	1.48	1.54
2	A	248	PO4	P-O4	-2.02	1.48	1.54
2	C	250	PO4	P-O4	-2.02	1.48	1.54

All (4) bond angle outliers are listed below:

Mol	Chain	Res	Type	Atoms	Z	Observed(°)	Ideal(°)
3	B	246	6MP	N3-C2-N1	-2.70	125.01	128.67
3	C	245	6MP	N3-C2-N1	-2.58	125.17	128.67
3	A	247	6MP	N3-C2-N1	-2.47	125.31	128.67
3	A	247	6MP	C5-C6-N1	-2.24	120.19	121.78

There are no chirality outliers.

There are no torsion outliers.

There are no ring outliers.

1 monomer is involved in 2 short contacts:

Mol	Chain	Res	Type	Clashes	Symm-Clashes
3	B	246	6MP	2	0

5.7 Other polymers [i](#)

There are no such residues in this entry.

5.8 Polymer linkage issues [i](#)

There are no chain breaks in this entry.

6 Fit of model and data

6.1 Protein, DNA and RNA chains

In the following table, the column labelled ‘#RSRZ> 2’ contains the number (and percentage) of RSRZ outliers, followed by percent RSRZ outliers for the chain as percentile scores relative to all X-ray entries and entries of similar resolution. The OWAB column contains the minimum, median, 95th percentile and maximum values of the occupancy-weighted average B-factor per residue. The column labelled ‘Q< 0.9’ lists the number of (and percentage) of residues with an average occupancy less than 0.9.

Mol	Chain	Analysed	<RSRZ>	#RSRZ>2	OWAB(Å ²)	Q<0.9
1	A	237/238 (99%)	0.29	18 (7%) 13 14	13, 32, 73, 119	0
1	B	237/238 (99%)	0.28	17 (7%) 15 16	13, 26, 65, 133	0
1	C	237/238 (99%)	0.27	25 (10%) 6 6	17, 32, 66, 114	0
All	All	711/714 (99%)	0.28	60 (8%) 11 11	13, 29, 71, 133	0

All (60) RSRZ outliers are listed below:

Mol	Chain	Res	Type	RSRZ
1	B	212	THR	18.5
1	C	212	THR	18.1
1	B	209	HIS	10.1
1	B	211	GLN	9.2
1	B	213	THR	9.2
1	B	207	ARG	8.9
1	A	209	HIS	8.4
1	B	208	THR	8.0
1	C	211	GLN	7.8
1	B	205	HIS	7.2
1	C	213	THR	6.6
1	A	208	THR	6.5
1	A	212	THR	6.3
1	A	207	ARG	6.1
1	C	215	ALA	5.5
1	B	210	GLU	5.4
1	A	211	GLN	5.4
1	B	204	ASP	5.4
1	B	147	ASP	4.8
1	B	206	ILE	4.7
1	A	215	ALA	4.7
1	A	1	ALA	4.6
1	C	209	HIS	4.3

Continued on next page...

Continued from previous page...

Mol	Chain	Res	Type	RSRZ
1	B	97	HIS	4.0
1	C	210	GLU	4.0
1	A	214	ALA	3.8
1	C	208	THR	3.6
1	C	216	GLU	3.6
1	C	35	ASP	3.4
1	A	210	GLU	3.4
1	A	2	THR	3.4
1	C	147	ASP	3.3
1	C	214	ALA	3.2
1	A	213	THR	3.2
1	B	214	ALA	3.2
1	A	216	GLU	3.2
1	B	101	ARG	3.1
1	A	219	THR	3.1
1	C	218	GLN	3.1
1	A	97	HIS	3.0
1	C	17	LEU	2.9
1	C	217	ARG	2.8
1	A	147	ASP	2.7
1	C	101	ARG	2.6
1	C	34	GLU	2.6
1	C	142	LYS	2.5
1	A	21	ASP	2.4
1	C	37	ARG	2.3
1	B	165	GLU	2.3
1	C	16	VAL	2.3
1	A	41	ASN	2.3
1	C	88	VAL	2.2
1	C	236	ASP	2.2
1	C	1	ALA	2.2
1	C	86	ILE	2.2
1	A	218	GLN	2.2
1	C	228	ALA	2.1
1	C	8	GLU	2.1
1	B	163	ASP	2.1
1	B	37	ARG	2.1

6.2 Non-standard residues in protein, DNA, RNA chains

There are no non-standard protein/DNA/RNA residues in this entry.

6.3 Carbohydrates [i](#)

There are no monosaccharides in this entry.

6.4 Ligands [i](#)

In the following table, the Atoms column lists the number of modelled atoms in the group and the number defined in the chemical component dictionary. The B-factors column lists the minimum, median, 95th percentile and maximum values of B factors of atoms in the group. The column labelled 'Q< 0.9' lists the number of atoms with occupancy less than 0.9.

Mol	Type	Chain	Res	Atoms	RSCC	RSR	B-factors(Å ²)	Q<0.9
3	6MP	A	247	10/10	0.80	0.26	57,60,62,62	0
3	6MP	B	246	10/10	0.89	0.19	55,56,58,61	0
3	6MP	C	245	10/10	0.93	0.18	37,41,43,44	0
2	PO4	A	248	5/5	0.98	0.12	58,58,60,60	0
2	PO4	C	250	5/5	0.99	0.14	36,36,37,37	0
2	PO4	B	249	5/5	0.99	0.11	27,28,29,29	0

6.5 Other polymers [i](#)

There are no such residues in this entry.