



Full wwPDB X-ray Structure Validation Report ⓘ

Apr 30, 2024 – 06:41 pm BST

PDB ID : 8OW5
Title : Crystal structure of Mycobacterium smegmatis CoaB in complex with CTP and 5-methoxy-1H-indole-2-carboxylic acid
Authors : Mendes, V.; Blundell, T.L.
Deposited on : 2023-04-27
Resolution : 2.84 Å(reported)

This is a Full wwPDB X-ray Structure Validation Report for a publicly released PDB entry.

We welcome your comments at validation@mail.wwpdb.org

A user guide is available at

<https://www.wwpdb.org/validation/2017/XrayValidationReportHelp>

with specific help available everywhere you see the ⓘ symbol.

The types of validation reports are described at

<http://www.wwpdb.org/validation/2017/FAQs#types>.

The following versions of software and data (see [references ⓘ](#)) were used in the production of this report:

MolProbity : 4.02b-467
Mogul : 1.8.4, CSD as541be (2020)
Xtriage (Phenix) : 1.13
EDS : 2.36.2
buster-report : 1.1.7 (2018)
Percentile statistics : 20191225.v01 (using entries in the PDB archive December 25th 2019)
Refmac : 5.8.0158
CCP4 : 7.0.044 (Gargrove)
Ideal geometry (proteins) : Engh & Huber (2001)
Ideal geometry (DNA, RNA) : Parkinson et al. (1996)
Validation Pipeline (wwPDB-VP) : 2.36.2

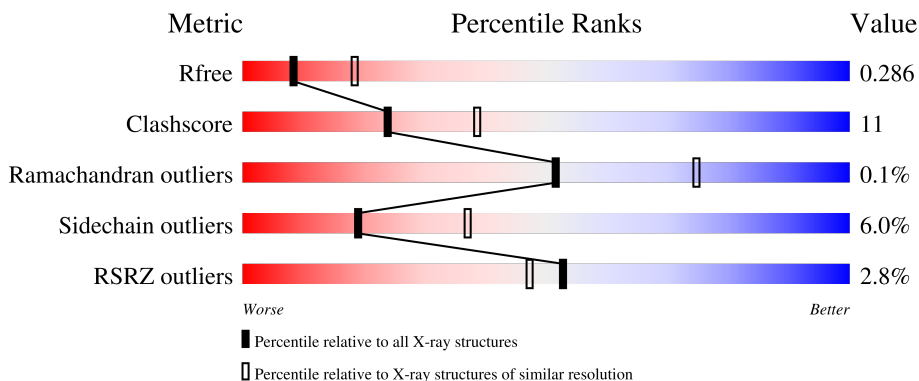
1 Overall quality at a glance

The following experimental techniques were used to determine the structure:

X-RAY DIFFRACTION

The reported resolution of this entry is 2.84 Å.

Percentile scores (ranging between 0-100) for global validation metrics of the entry are shown in the following graphic. The table shows the number of entries on which the scores are based.



Metric	Whole archive (#Entries)	Similar resolution (#Entries, resolution range(Å))
R_{free}	130704	1031 (2.86-2.82)
Clashscore	141614	1078 (2.86-2.82)
Ramachandran outliers	138981	1050 (2.86-2.82)
Sidechain outliers	138945	1051 (2.86-2.82)
RSRZ outliers	127900	1019 (2.86-2.82)

The table below summarises the geometric issues observed across the polymeric chains and their fit to the electron density. The red, orange, yellow and green segments of the lower bar indicate the fraction of residues that contain outliers for ≥ 3 , 2, 1 and 0 types of geometric quality criteria respectively. A grey segment represents the fraction of residues that are not modelled. The numeric value for each fraction is indicated below the corresponding segment, with a dot representing fractions $\leq 5\%$. The upper red bar (where present) indicates the fraction of residues that have poor fit to the electron density. The numeric value is given above the bar.

Mol	Chain	Length	Quality of chain
1	A	237	
1	B	237	
1	C	237	
1	D	237	

2 Entry composition [i](#)

There are 4 unique types of molecules in this entry. The entry contains 6102 atoms, of which 0 are hydrogens and 0 are deuteriums.

In the tables below, the ZeroOcc column contains the number of atoms modelled with zero occupancy, the AltConf column contains the number of residues with at least one atom in alternate conformation and the Trace column contains the number of residues modelled with at most 2 atoms.

- Molecule 1 is a protein called Coenzyme A biosynthesis bifunctional protein CoaBC.

Mol	Chain	Residues	Atoms					ZeroOcc	AltConf	Trace
			Total	C	N	O	S			
1	A	209	1466	913	266	281	6	0	0	0
1	B	224	1539	954	284	295	6	0	0	0
1	C	213	1477	916	274	282	5	0	0	0
1	D	213	1486	925	279	276	6	0	0	0

There are 32 discrepancies between the modelled and reference sequences:

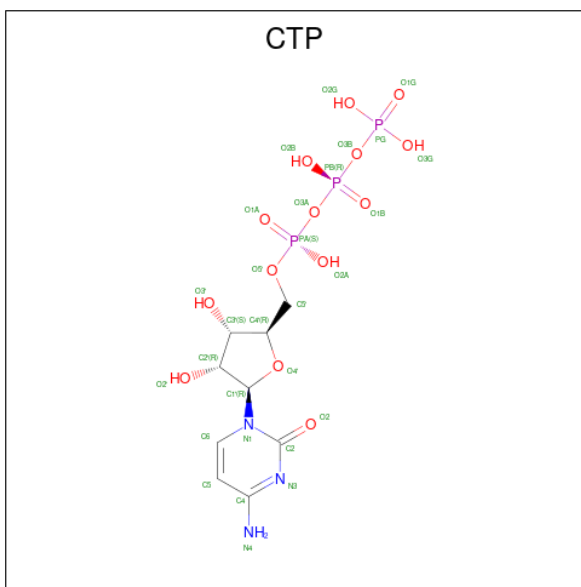
Chain	Residue	Modelled	Actual	Comment	Reference
A	178	MET	-	initiating methionine	UNP A0QWT2
A	179	ALA	-	expression tag	UNP A0QWT2
A	180	HIS	-	expression tag	UNP A0QWT2
A	181	HIS	-	expression tag	UNP A0QWT2
A	182	HIS	-	expression tag	UNP A0QWT2
A	183	HIS	-	expression tag	UNP A0QWT2
A	184	HIS	-	expression tag	UNP A0QWT2
A	185	HIS	-	expression tag	UNP A0QWT2
B	178	MET	-	initiating methionine	UNP A0QWT2
B	179	ALA	-	expression tag	UNP A0QWT2
B	180	HIS	-	expression tag	UNP A0QWT2
B	181	HIS	-	expression tag	UNP A0QWT2
B	182	HIS	-	expression tag	UNP A0QWT2
B	183	HIS	-	expression tag	UNP A0QWT2
B	184	HIS	-	expression tag	UNP A0QWT2
B	185	HIS	-	expression tag	UNP A0QWT2
C	178	MET	-	initiating methionine	UNP A0QWT2
C	179	ALA	-	expression tag	UNP A0QWT2
C	180	HIS	-	expression tag	UNP A0QWT2
C	181	HIS	-	expression tag	UNP A0QWT2
C	182	HIS	-	expression tag	UNP A0QWT2

Continued on next page...

Continued from previous page...

Chain	Residue	Modelled	Actual	Comment	Reference
C	183	HIS	-	expression tag	UNP A0QWT2
C	184	HIS	-	expression tag	UNP A0QWT2
C	185	HIS	-	expression tag	UNP A0QWT2
D	178	MET	-	initiating methionine	UNP A0QWT2
D	179	ALA	-	expression tag	UNP A0QWT2
D	180	HIS	-	expression tag	UNP A0QWT2
D	181	HIS	-	expression tag	UNP A0QWT2
D	182	HIS	-	expression tag	UNP A0QWT2
D	183	HIS	-	expression tag	UNP A0QWT2
D	184	HIS	-	expression tag	UNP A0QWT2
D	185	HIS	-	expression tag	UNP A0QWT2

- Molecule 2 is CYTIDINE-5'-TRIPHOSPHATE (three-letter code: CTP) (formula: $C_9H_{16}N_3O_{14}P_3$).

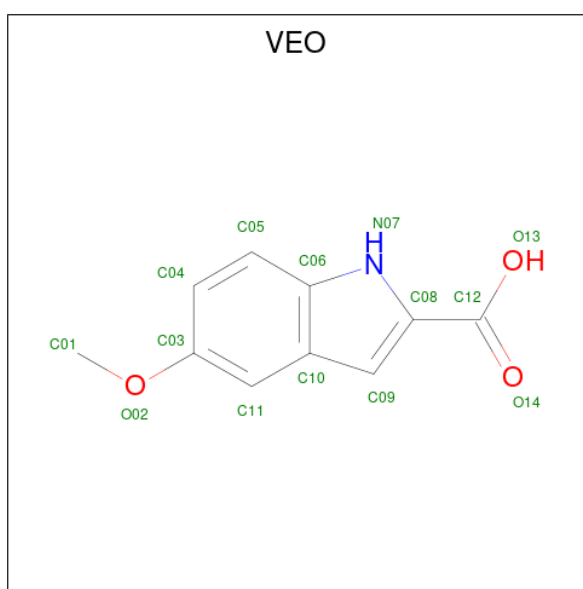


Mol	Chain	Residues	Atoms					ZeroOcc	AltConf
2	A	1	Total	C	N	O	P	0	0
			29	9	3	14	3		
2	B	1	Total	C	N	O	P	0	0
			29	9	3	14	3		
2	C	1	Total	C	N	O	P	0	0
			29	9	3	14	3		
2	D	1	Total	C	N	O	P	0	0
			29	9	3	14	3		

- Molecule 3 is CALCIUM ION (three-letter code: CA) (formula: Ca).

Mol	Chain	Residues	Atoms	ZeroOcc	AltConf
3	A	1	Total Ca 1 1	0	0
3	B	1	Total Ca 1 1	0	0
3	C	1	Total Ca 1 1	0	0
3	D	1	Total Ca 1 1	0	0

- Molecule 4 is 5-methoxy-1H-indole-2-carboxylic acid (three-letter code: VEO) (formula: $C_{10}H_9NO_3$) (labeled as "Ligand of Interest" by depositor).



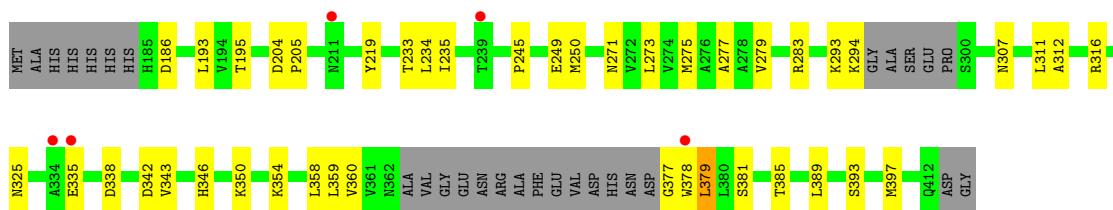
Mol	Chain	Residues	Atoms	ZeroOcc	AltConf
4	B	1	Total C N O 14 10 1 3	0	0

3 Residue-property plots [i](#)

These plots are drawn for all protein, RNA, DNA and oligosaccharide chains in the entry. The first graphic for a chain summarises the proportions of the various outlier classes displayed in the second graphic. The second graphic shows the sequence view annotated by issues in geometry and electron density. Residues are color-coded according to the number of geometric quality criteria for which they contain at least one outlier: green = 0, yellow = 1, orange = 2 and red = 3 or more. A red dot above a residue indicates a poor fit to the electron density ($RSRZ > 2$). Stretches of 2 or more consecutive residues without any outlier are shown as a green connector. Residues present in the sample, but not in the model, are shown in grey.

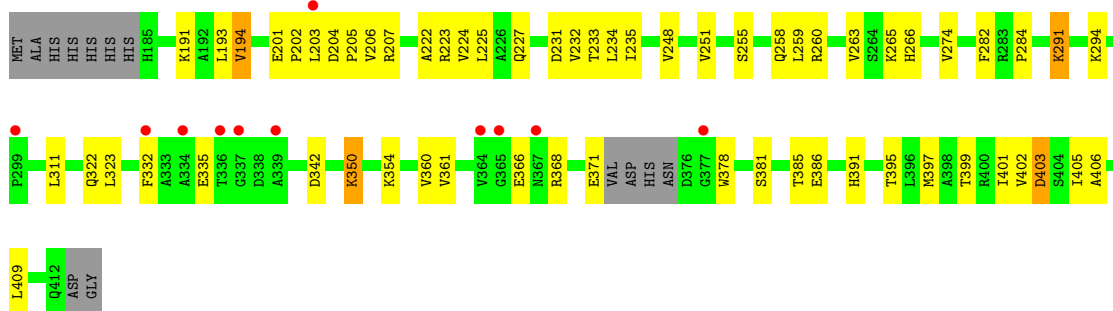
- Molecule 1: Coenzyme A biosynthesis bifunctional protein CoaBC

Chain A: 



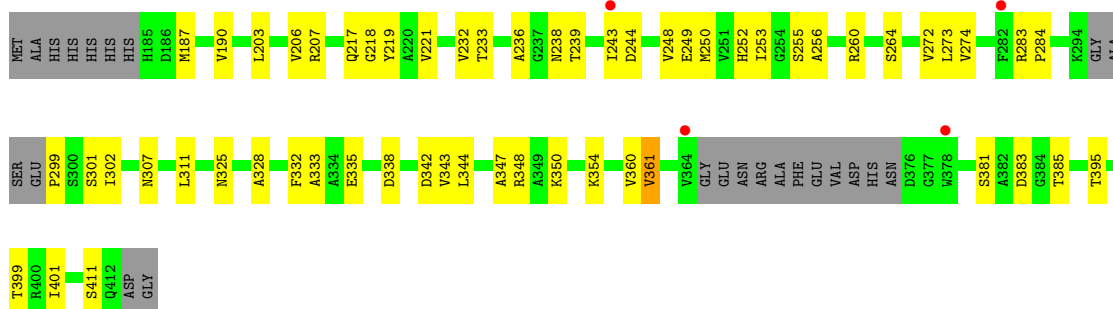
- Molecule 1: Coenzyme A biosynthesis bifunctional protein CoaBC

Chain B: 



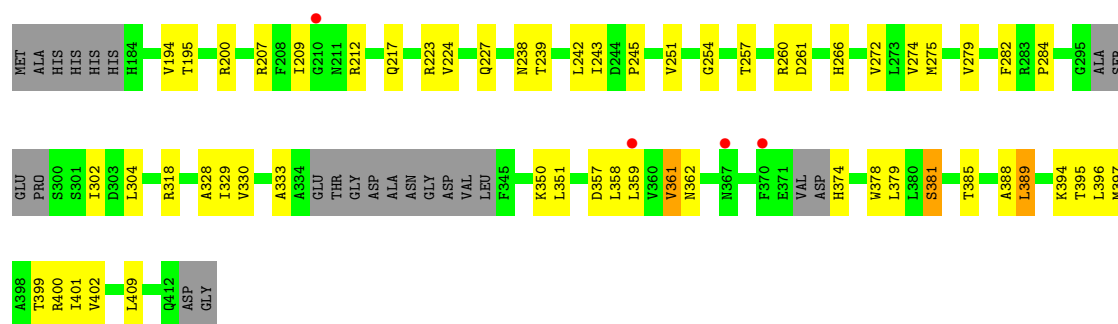
- Molecule 1: Coenzyme A biosynthesis bifunctional protein CoaBC

Chain C: 



- Molecule 1: Coenzyme A biosynthesis bifunctional protein CoaBC

Chain D: 2% 66% 23% 10%



4 Data and refinement statistics

Property	Value	Source
Space group	P 21 21 21	Depositor
Cell constants a, b, c, α , β , γ	76.73Å 77.48Å 144.80Å 90.00° 90.00° 90.00°	Depositor
Resolution (Å)	68.31 – 2.84 68.31 – 2.84	Depositor EDS
% Data completeness (in resolution range)	100.0 (68.31-2.84) 97.3 (68.31-2.84)	Depositor EDS
R_{merge}	0.10	Depositor
R_{sym}	(Not available)	Depositor
$\langle I/\sigma(I) \rangle$ ¹	2.12 (at 2.86Å)	Xtrriage
Refinement program	PHENIX (1.20.1_4487: ???)	Depositor
R, R_{free}	0.218 , 0.295 0.217 , 0.286	Depositor DCC
R_{free} test set	1036 reflections (4.93%)	wwPDB-VP
Wilson B-factor (Å ²)	65.3	Xtrriage
Anisotropy	0.313	Xtrriage
Bulk solvent k_{sol} (e/Å ³), B_{sol} (Å ²)	0.33 , 67.1	EDS
L-test for twinning ²	$\langle L \rangle = 0.46$, $\langle L^2 \rangle = 0.29$	Xtrriage
Estimated twinning fraction	0.208 for k,h,-l	Xtrriage
F_o, F_c correlation	0.93	EDS
Total number of atoms	6102	wwPDB-VP
Average B, all atoms (Å ²)	72.0	wwPDB-VP

Xtrriage's analysis on translational NCS is as follows: *The largest off-origin peak in the Patterson function is 4.37% of the height of the origin peak. No significant pseudotranslation is detected.*

¹Intensities estimated from amplitudes.

²Theoretical values of $\langle |L| \rangle$, $\langle L^2 \rangle$ for acentric reflections are 0.5, 0.333 respectively for untwinned datasets, and 0.375, 0.2 for perfectly twinned datasets.

5 Model quality [i](#)

5.1 Standard geometry [i](#)

Bond lengths and bond angles in the following residue types are not validated in this section: CTP, VEO, CA

The Z score for a bond length (or angle) is the number of standard deviations the observed value is removed from the expected value. A bond length (or angle) with $|Z| > 5$ is considered an outlier worth inspection. RMSZ is the root-mean-square of all Z scores of the bond lengths (or angles).

Mol	Chain	Bond lengths		Bond angles	
		RMSZ	# Z >5	RMSZ	# Z >5
1	A	0.59	0/1483	0.79	0/2013
1	B	0.59	0/1557	0.78	0/2117
1	C	0.61	0/1495	0.78	0/2036
1	D	0.63	0/1503	0.77	0/2041
All	All	0.61	0/6038	0.78	0/8207

There are no bond length outliers.

There are no bond angle outliers.

There are no chirality outliers.

There are no planarity outliers.

5.2 Too-close contacts [i](#)

In the following table, the Non-H and H(model) columns list the number of non-hydrogen atoms and hydrogen atoms in the chain respectively. The H(added) column lists the number of hydrogen atoms added and optimized by MolProbity. The Clashes column lists the number of clashes within the asymmetric unit, whereas Symm-Clashes lists symmetry-related clashes.

Mol	Chain	Non-H	H(model)	H(added)	Clashes	Symm-Clashes
1	A	1466	0	1436	27	0
1	B	1539	0	1485	38	0
1	C	1477	0	1424	34	0
1	D	1486	0	1450	37	0
2	A	29	0	12	2	0
2	B	29	0	12	2	0
2	C	29	0	12	1	0
2	D	29	0	12	3	0
3	A	1	0	0	0	0

Continued on next page...

Continued from previous page...

Mol	Chain	Non-H	H(model)	H(added)	Clashes	Symm-Clashes
3	B	1	0	0	0	0
3	C	1	0	0	0	0
3	D	1	0	0	0	0
4	B	14	0	0	0	0
All	All	6102	0	5843	132	0

The all-atom clashscore is defined as the number of clashes found per 1000 atoms (including hydrogen atoms). The all-atom clashscore for this structure is 11.

All (132) close contacts within the same asymmetric unit are listed below, sorted by their clash magnitude.

Atom-1	Atom-2	Interatomic distance (Å)	Clash overlap (Å)
1:D:381:SER:HB3	1:D:385:THR:HB	1.52	0.90
1:D:351:LEU:HB2	1:D:359:LEU:HD12	1.63	0.81
1:A:335:GLU:HB2	1:A:343:VAL:HG13	1.63	0.80
1:B:224:VAL:HG11	1:B:402:VAL:HG11	1.62	0.79
1:A:195:THR:HB	1:A:277:ALA:HB2	1.63	0.78
1:B:191:LYS:HA	1:B:231:ASP:HB3	1.67	0.77
1:B:311:LEU:HD23	1:B:354:LYS:HD3	1.67	0.77
1:C:335:GLU:HG3	1:C:347:ALA:HB2	1.66	0.75
1:B:401:ILE:O	1:B:405:ILE:HG13	1.88	0.74
1:D:359:LEU:HD22	1:D:361:VAL:HG12	1.71	0.73
1:B:381:SER:HB3	1:B:385:THR:HB	1.72	0.72
1:D:260:ARG:NH1	1:D:261:ASP:OD1	2.23	0.71
1:C:232:VAL:HB	1:C:248:VAL:HG22	1.70	0.71
1:B:350:LYS:NZ	2:B:502:CTP:O3A	2.26	0.68
1:D:328:ALA:HA	1:D:357:ASP:OD2	1.94	0.68
1:D:272:VAL:HG22	1:D:328:ALA:HB3	1.77	0.66
1:C:311:LEU:HD23	1:C:354:LYS:HD2	1.79	0.65
1:B:397:MET:O	1:B:401:ILE:HG13	1.97	0.64
1:B:232:VAL:HB	1:B:248:VAL:HG22	1.80	0.63
1:B:193:LEU:HD11	1:B:235:ILE:HD12	1.80	0.63
1:C:332:PHE:O	2:C:501:CTP:H5'1	1.99	0.62
1:D:209:ILE:HD12	1:D:284:PRO:HD3	1.80	0.62
1:B:203:LEU:HD22	1:B:284:PRO:HG3	1.81	0.62
1:D:223:ARG:O	1:D:227:GLN:HG3	1.99	0.62
1:C:360:VAL:HG11	1:C:401:ILE:HD11	1.81	0.62
1:C:381:SER:HB2	1:C:385:THR:HB	1.82	0.61
1:D:350:LYS:NZ	2:D:501:CTP:O2A	2.34	0.60
1:C:244:ASP:HB3	1:C:250:MET:HG3	1.83	0.60
1:A:381:SER:HB2	1:A:385:THR:HB	1.83	0.59

Continued on next page...

Continued from previous page...

Atom-1	Atom-2	Interatomic distance (Å)	Clash overlap (Å)
1:A:275:MET:HG3	1:A:311:LEU:HD13	1.84	0.58
1:B:222:ALA:HA	1:B:225:LEU:HD12	1.85	0.58
1:A:381:SER:CB	1:A:385:THR:HB	2.34	0.57
1:C:344:LEU:HG	1:C:348:ARG:CZ	2.34	0.57
1:D:379:LEU:HD11	1:D:389:LEU:HD23	1.86	0.57
1:A:358:LEU:HG	1:A:359:LEU:N	2.20	0.56
1:C:283:ARG:NH1	1:C:307:ASN:OD1	2.37	0.56
1:D:397:MET:O	1:D:401:ILE:HG13	2.05	0.55
1:A:193:LEU:HD11	1:A:235:ILE:HD12	1.89	0.55
1:B:204:ASP:HB2	1:B:205:PRO:HD2	1.89	0.55
1:B:260:ARG:HH11	1:B:260:ARG:HG2	1.71	0.55
1:B:395:THR:O	1:B:399:THR:OG1	2.20	0.55
1:A:293:LYS:NZ	1:B:350:LYS:HD2	2.21	0.55
1:C:233:THR:HG23	1:C:249:GLU:HB3	1.89	0.55
1:C:187:MET:O	1:C:190:VAL:HG12	2.07	0.54
1:C:395:THR:O	1:C:399:THR:HG23	2.08	0.53
1:B:224:VAL:CG1	1:B:402:VAL:HG11	2.34	0.53
1:D:223:ARG:HG3	1:D:245:PRO:HB3	1.91	0.53
1:B:335:GLU:OE2	1:B:350:LYS:HE2	2.08	0.53
1:D:239:THR:HB	1:D:242:LEU:HB2	1.91	0.53
1:D:224:VAL:HG11	1:D:402:VAL:HG11	1.91	0.53
1:D:330:VAL:HG13	1:D:358:LEU:HB2	1.90	0.53
1:D:217:GLN:HB2	1:D:394:LYS:HE3	1.91	0.52
1:B:368:ARG:O	1:B:371:GLU:HB2	2.10	0.52
1:A:293:LYS:HZ3	1:B:350:LYS:HD2	1.74	0.52
1:B:206:VAL:HG13	1:B:207:ARG:HG3	1.92	0.52
1:B:274:VAL:HG13	1:B:332:PHE:HE1	1.74	0.52
1:B:399:THR:O	1:B:403:ASP:HB2	2.10	0.51
1:A:283:ARG:HD3	1:A:307:ASN:OD1	2.10	0.51
1:A:381:SER:OG	1:A:385:THR:HB	2.10	0.51
1:B:322:GLN:O	1:B:323:LEU:HD23	2.11	0.51
1:B:223:ARG:O	1:B:227:GLN:HG3	2.11	0.50
1:D:279:VAL:HG22	2:D:501:CTP:C6	2.46	0.50
1:A:245:PRO:HD2	1:A:250:MET:SD	2.53	0.49
1:C:333:ALA:O	1:C:361:VAL:HA	2.12	0.49
1:B:406:ALA:HA	1:B:409:LEU:HD12	1.94	0.49
1:A:273:LEU:HD11	1:A:275:MET:HE3	1.95	0.49
1:B:204:ASP:OD2	1:B:291:LYS:HA	2.12	0.49
1:A:234:LEU:HD23	1:A:250:MET:SD	2.53	0.48
1:B:259:LEU:HD23	1:B:263:VAL:HG23	1.95	0.48
1:D:224:VAL:CG1	1:D:402:VAL:HG11	2.44	0.48

Continued on next page...

Continued from previous page...

Atom-1	Atom-2	Interatomic distance (Å)	Clash overlap (Å)
1:A:271:ASN:HA	1:A:325:ASN:O	2.13	0.48
1:B:194:VAL:HG22	1:B:234:LEU:HD13	1.94	0.48
1:B:294:LYS:HG2	1:B:294:LYS:O	2.12	0.48
1:D:274:VAL:HG12	1:D:330:VAL:HB	1.95	0.48
1:C:344:LEU:O	1:C:348:ARG:HB2	2.14	0.48
1:A:195:THR:HA	1:A:235:ILE:O	2.14	0.47
1:D:350:LYS:NZ	2:D:501:CTP:PA	2.87	0.47
1:C:187:MET:HB3	1:C:190:VAL:HG11	1.96	0.47
1:C:236:ALA:O	1:C:252:HIS:HA	2.15	0.47
1:C:299:PRO:HG2	1:D:282:PHE:CZ	2.50	0.47
1:B:378:TRP:HZ3	1:B:386:GLU:O	1.96	0.47
1:B:255:SER:OG	1:B:258:GLN:HG3	2.14	0.47
1:C:273:LEU:HD12	1:C:274:VAL:N	2.30	0.47
1:D:357:ASP:O	1:D:358:LEU:HD23	2.14	0.47
1:C:252:HIS:O	1:C:253:ILE:HD12	2.15	0.47
1:C:335:GLU:OE2	1:C:350:LYS:HE3	2.15	0.47
1:A:393:SER:O	1:A:397:MET:HG3	2.14	0.46
1:D:409:LEU:HD23	1:D:409:LEU:HA	1.64	0.46
1:A:204:ASP:HB2	1:A:205:PRO:HD2	1.97	0.46
1:B:366:GLU:CB	1:B:371:GLU:HB3	2.46	0.46
1:A:312:ALA:O	1:A:316:ARG:HG2	2.15	0.46
1:C:255:SER:OG	1:C:256:ALA:N	2.49	0.46
1:D:195:THR:OG1	1:D:275:MET:HA	2.16	0.46
1:A:377:GLY:C	1:A:389:LEU:HB2	2.37	0.45
1:B:202:PRO:O	1:B:284:PRO:HG2	2.16	0.45
1:C:260:ARG:HH11	1:C:260:ARG:HG2	1.81	0.45
1:C:217:GLN:HG2	1:C:218:GLY:N	2.32	0.45
1:D:243:ILE:HG13	1:D:243:ILE:O	2.16	0.45
1:C:203:LEU:HD13	1:C:284:PRO:CG	2.48	0.44
1:C:217:GLN:HG2	1:C:218:GLY:H	1.82	0.44
1:D:396:LEU:O	1:D:400:ARG:HG2	2.18	0.44
1:D:194:VAL:HG13	1:D:274:VAL:HG23	1.99	0.44
1:C:302:ILE:HB	1:D:302:ILE:HB	2.00	0.44
1:C:273:LEU:HD12	1:C:274:VAL:H	1.83	0.43
1:D:378:TRP:HA	1:D:388:ALA:HA	2.00	0.43
1:D:251:VAL:HG21	1:D:266:HIS:NE2	2.33	0.43
1:C:342:ASP:O	1:C:343:VAL:C	2.54	0.43
1:D:389:LEU:HD22	1:D:397:MET:HE2	2.00	0.43
1:A:358:LEU:HD11	1:A:379:LEU:HG	2.01	0.43
1:A:350:LYS:NZ	2:A:501:CTP:O3B	2.46	0.42
1:D:200:ARG:HH12	1:D:238:ASN:ND2	2.17	0.42

Continued on next page...

Continued from previous page...

Atom-1	Atom-2	Interatomic distance (Å)	Clash overlap (Å)
1:D:395:THR:O	1:D:399:THR:HG23	2.19	0.42
1:A:279:VAL:HB	2:A:501:CTP:C5	2.55	0.42
1:B:193:LEU:HD12	1:B:233:THR:O	2.20	0.42
1:D:361:VAL:HG23	1:D:362:ASN:OD1	2.19	0.42
1:D:333:ALA:O	1:D:361:VAL:HA	2.20	0.42
1:C:219:TYR:CE2	1:C:239:THR:HG21	2.54	0.42
1:D:389:LEU:HD12	1:D:389:LEU:O	2.20	0.42
1:B:342:ASP:N	1:B:342:ASP:OD1	2.53	0.41
1:B:265:LYS:HG2	1:B:266:HIS:ND1	2.35	0.41
1:A:294:LYS:HG2	2:B:502:CTP:PG	2.61	0.41
1:C:283:ARG:HH12	1:C:307:ASN:HA	1.84	0.41
1:B:201:GLU:HG3	1:B:282:PHE:O	2.21	0.41
1:C:206:VAL:HG23	1:C:207:ARG:N	2.35	0.41
1:C:260:ARG:O	1:C:264:SER:N	2.42	0.41
1:B:260:ARG:HG2	1:B:260:ARG:NH1	2.35	0.41
1:C:272:VAL:HG22	1:C:328:ALA:HB3	2.02	0.41
1:A:350:LYS:O	1:A:354:LYS:HB2	2.21	0.41
1:C:187:MET:HB3	1:C:190:VAL:CG1	2.51	0.41
1:A:219:TYR:CE2	1:A:245:PRO:HD3	2.56	0.41
1:A:233:THR:HA	1:A:249:GLU:HB3	2.04	0.40
1:D:329:ILE:O	1:D:357:ASP:HB2	2.21	0.40

There are no symmetry-related clashes.

5.3 Torsion angles [\(i\)](#)

5.3.1 Protein backbone [\(i\)](#)

In the following table, the Percentiles column shows the percent Ramachandran outliers of the chain as a percentile score with respect to all X-ray entries followed by that with respect to entries of similar resolution.

The Analysed column shows the number of residues for which the backbone conformation was analysed, and the total number of residues.

Mol	Chain	Analysed	Favoured	Allowed	Outliers	Percentiles	
1	A	203/237 (86%)	198 (98%)	5 (2%)	0	100	100
1	B	220/237 (93%)	211 (96%)	9 (4%)	0	100	100
1	C	207/237 (87%)	198 (96%)	9 (4%)	0	100	100
1	D	205/237 (86%)	194 (95%)	10 (5%)	1 (0%)	29	51

Continued on next page...

Continued from previous page...

Mol	Chain	Analysed	Favoured	Allowed	Outliers	Percentiles
All	All	835/948 (88%)	801 (96%)	33 (4%)	1 (0%)	51 75

All (1) Ramachandran outliers are listed below:

Mol	Chain	Res	Type
1	D	254	GLY

5.3.2 Protein sidechains [i](#)

In the following table, the Percentiles column shows the percent sidechain outliers of the chain as a percentile score with respect to all X-ray entries followed by that with respect to entries of similar resolution.

The Analysed column shows the number of residues for which the sidechain conformation was analysed, and the total number of residues.

Mol	Chain	Analysed	Rotameric	Outliers	Percentiles
1	A	138/173 (80%)	131 (95%)	7 (5%)	24 45
1	B	139/173 (80%)	131 (94%)	8 (6%)	20 38
1	C	136/173 (79%)	127 (93%)	9 (7%)	16 32
1	D	137/173 (79%)	128 (93%)	9 (7%)	16 32
All	All	550/692 (80%)	517 (94%)	33 (6%)	19 37

All (33) residues with a non-rotameric sidechain are listed below:

Mol	Chain	Res	Type
1	A	186	ASP
1	A	338	ASP
1	A	342	ASP
1	A	346	HIS
1	A	360	VAL
1	A	378	TRP
1	A	379	LEU
1	B	194	VAL
1	B	251	VAL
1	B	291	LYS
1	B	350	LYS
1	B	360	VAL
1	B	361	VAL
1	B	391	HIS

Continued on next page...

Continued from previous page...

Mol	Chain	Res	Type
1	B	403	ASP
1	C	221	VAL
1	C	238	ASN
1	C	243	ILE
1	C	301	SER
1	C	325	ASN
1	C	338	ASP
1	C	361	VAL
1	C	383	ASP
1	C	411	SER
1	D	207	ARG
1	D	212	ARG
1	D	257	THR
1	D	304	LEU
1	D	318	ARG
1	D	361	VAL
1	D	374	HIS
1	D	381	SER
1	D	389	LEU

Sometimes sidechains can be flipped to improve hydrogen bonding and reduce clashes. All (3) such sidechains are listed below:

Mol	Chain	Res	Type
1	B	227	GLN
1	C	238	ASN
1	C	271	ASN

5.3.3 RNA [i](#)

There are no RNA molecules in this entry.

5.4 Non-standard residues in protein, DNA, RNA chains [i](#)

There are no non-standard protein/DNA/RNA residues in this entry.

5.5 Carbohydrates [i](#)

There are no monosaccharides in this entry.

5.6 Ligand geometry [i](#)

Of 9 ligands modelled in this entry, 4 are monoatomic - leaving 5 for Mogul analysis.

In the following table, the Counts columns list the number of bonds (or angles) for which Mogul statistics could be retrieved, the number of bonds (or angles) that are observed in the model and the number of bonds (or angles) that are defined in the Chemical Component Dictionary. The Link column lists molecule types, if any, to which the group is linked. The Z score for a bond length (or angle) is the number of standard deviations the observed value is removed from the expected value. A bond length (or angle) with $|Z| > 2$ is considered an outlier worth inspection. RMSZ is the root-mean-square of all Z scores of the bond lengths (or angles).

Mol	Type	Chain	Res	Link	Bond lengths			Bond angles		
					Counts	RMSZ	# Z > 2	Counts	RMSZ	# Z > 2
2	CTP	A	501	3	26,30,30	1.05	2 (7%)	39,47,47	1.30	5 (12%)
4	VEO	B	501	-	13,15,15	0.97	0	17,21,21	1.31	2 (11%)
2	CTP	C	501	3	26,30,30	0.88	0	39,47,47	1.16	4 (10%)
2	CTP	B	502	3	26,30,30	0.88	0	39,47,47	1.15	4 (10%)
2	CTP	D	501	3	26,30,30	0.93	1 (3%)	39,47,47	1.31	5 (12%)

In the following table, the Chirals column lists the number of chiral outliers, the number of chiral centers analysed, the number of these observed in the model and the number defined in the Chemical Component Dictionary. Similar counts are reported in the Torsion and Rings columns. '-' means no outliers of that kind were identified.

Mol	Type	Chain	Res	Link	Chirals	Torsions	Rings
2	CTP	A	501	3	-	9/22/38/38	0/2/2/2
4	VEO	B	501	-	-	2/4/14/14	0/2/2/2
2	CTP	C	501	3	-	6/22/38/38	0/2/2/2
2	CTP	B	502	3	-	5/22/38/38	0/2/2/2
2	CTP	D	501	3	-	6/22/38/38	0/2/2/2

All (3) bond length outliers are listed below:

Mol	Chain	Res	Type	Atoms	Z	Observed(Å)	Ideal(Å)
2	A	501	CTP	C2-N1	-2.20	1.35	1.40
2	D	501	CTP	C4-N3	2.16	1.38	1.34
2	A	501	CTP	C5-C4	-2.12	1.38	1.42

All (20) bond angle outliers are listed below:

Mol	Chain	Res	Type	Atoms	Z	Observed(°)	Ideal(°)
2	D	501	CTP	PB-O3A-PA	-3.89	119.47	132.83

Continued on next page...

Continued from previous page...

Mol	Chain	Res	Type	Atoms	Z	Observed(°)	Ideal(°)
2	A	501	CTP	C1'-N1-C2	-3.52	110.57	118.42
2	B	502	CTP	PB-O3B-PG	-3.52	120.76	132.83
2	C	501	CTP	PB-O3B-PG	-3.41	121.11	132.83
2	C	501	CTP	PB-O3A-PA	-3.05	122.36	132.83
4	B	501	VEO	C01-O02-C03	-3.00	111.01	117.51
2	B	502	CTP	PB-O3A-PA	-2.67	123.67	132.83
2	C	501	CTP	O3G-PG-O3B	2.63	113.47	104.64
2	A	501	CTP	O3'-C3'-C2'	-2.63	103.32	111.82
2	D	501	CTP	C2'-C3'-C4'	2.36	107.22	102.64
2	B	502	CTP	C2'-C1'-N1	-2.30	106.70	113.22
2	A	501	CTP	PB-O3A-PA	-2.25	125.11	132.83
2	A	501	CTP	PB-O3B-PG	-2.16	125.42	132.83
2	D	501	CTP	C2'-C1'-N1	-2.14	107.15	113.22
2	A	501	CTP	C2'-C3'-C4'	2.14	106.80	102.64
2	D	501	CTP	O2-C2-N3	-2.12	118.89	122.33
4	B	501	VEO	O14-C12-C08	-2.10	116.98	121.24
2	D	501	CTP	PB-O3B-PG	-2.08	125.70	132.83
2	C	501	CTP	C5-C6-N1	-2.06	118.36	121.81
2	B	502	CTP	O2G-PG-O3B	2.03	111.46	104.64

There are no chirality outliers.

All (28) torsion outliers are listed below:

Mol	Chain	Res	Type	Atoms
2	A	501	CTP	C5'-O5'-PA-O1A
2	A	501	CTP	C5'-O5'-PA-O2A
2	A	501	CTP	C5'-O5'-PA-O3A
2	B	502	CTP	C5'-O5'-PA-O1A
2	B	502	CTP	C5'-O5'-PA-O2A
2	B	502	CTP	C5'-O5'-PA-O3A
2	D	501	CTP	C5'-O5'-PA-O1A
2	D	501	CTP	C5'-O5'-PA-O2A
2	D	501	CTP	C5'-O5'-PA-O3A
4	B	501	VEO	C11-C03-O02-C01
4	B	501	VEO	C04-C03-O02-C01
2	C	501	CTP	O4'-C4'-C5'-O5'
2	D	501	CTP	O4'-C4'-C5'-O5'
2	A	501	CTP	C3'-C4'-C5'-O5'
2	A	501	CTP	O4'-C4'-C5'-O5'
2	B	502	CTP	C3'-C4'-C5'-O5'
2	B	502	CTP	O4'-C4'-C5'-O5'
2	C	501	CTP	C3'-C4'-C5'-O5'

Continued on next page...

Continued from previous page...

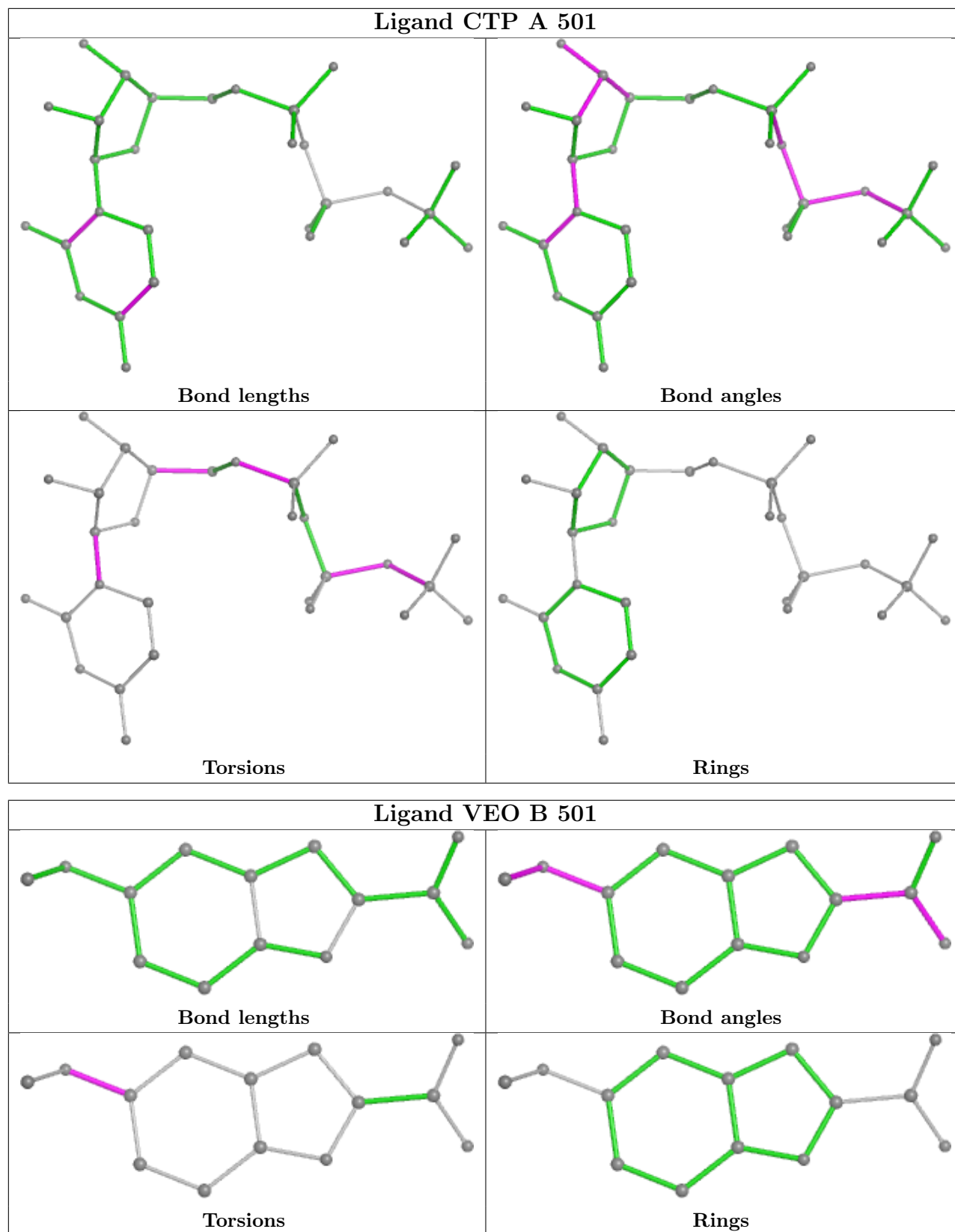
Mol	Chain	Res	Type	Atoms
2	D	501	CTP	C3'-C4'-C5'-O5'
2	C	501	CTP	PB-O3B-PG-O1G
2	C	501	CTP	PA-O3A-PB-O1B
2	A	501	CTP	PG-O3B-PB-O2B
2	D	501	CTP	PG-O3B-PB-O1B
2	A	501	CTP	PB-O3B-PG-O2G
2	A	501	CTP	PB-O3B-PG-O3G
2	A	501	CTP	O4'-C1'-N1-C2
2	C	501	CTP	PA-O3A-PB-O2B
2	C	501	CTP	C5'-O5'-PA-O1A

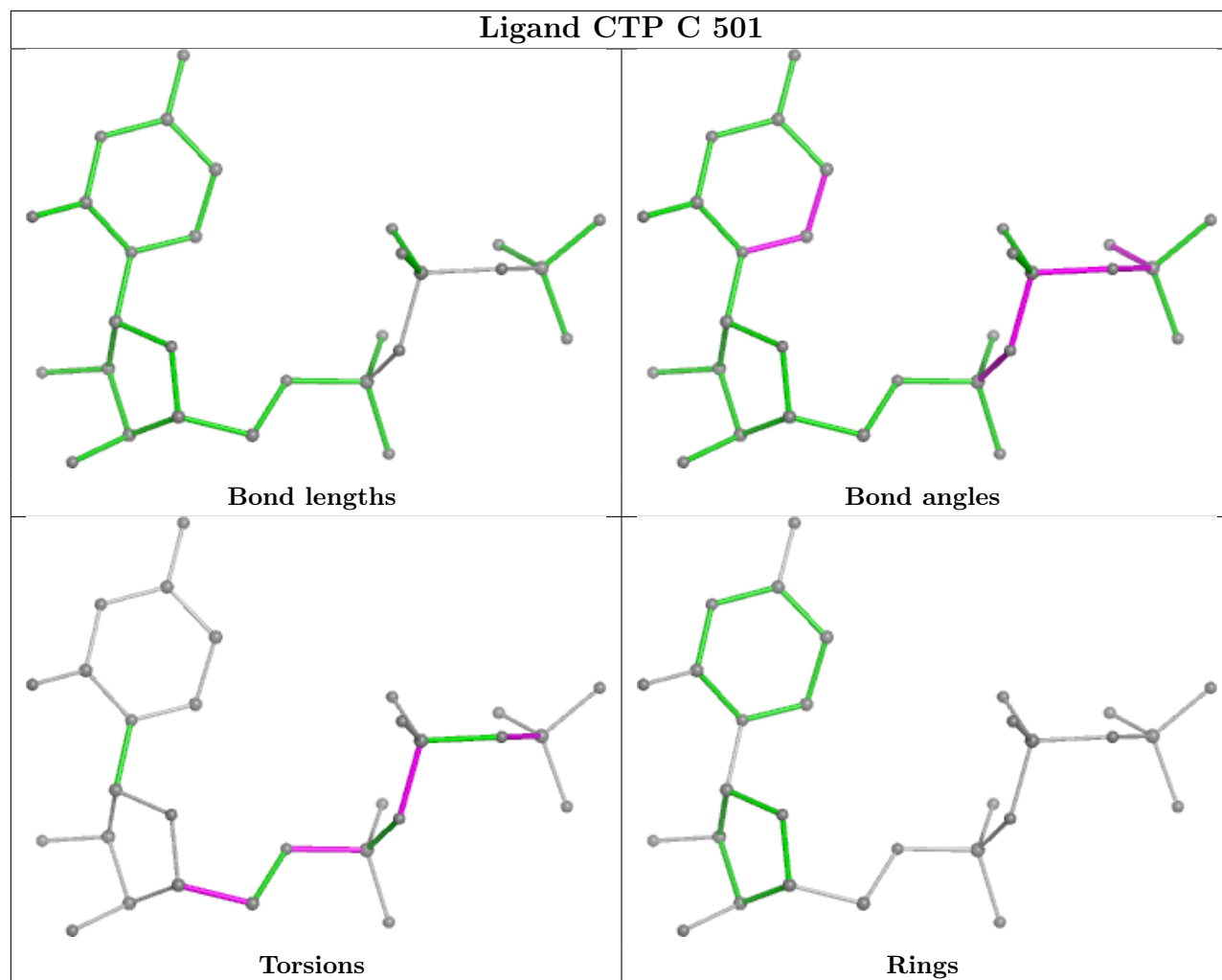
There are no ring outliers.

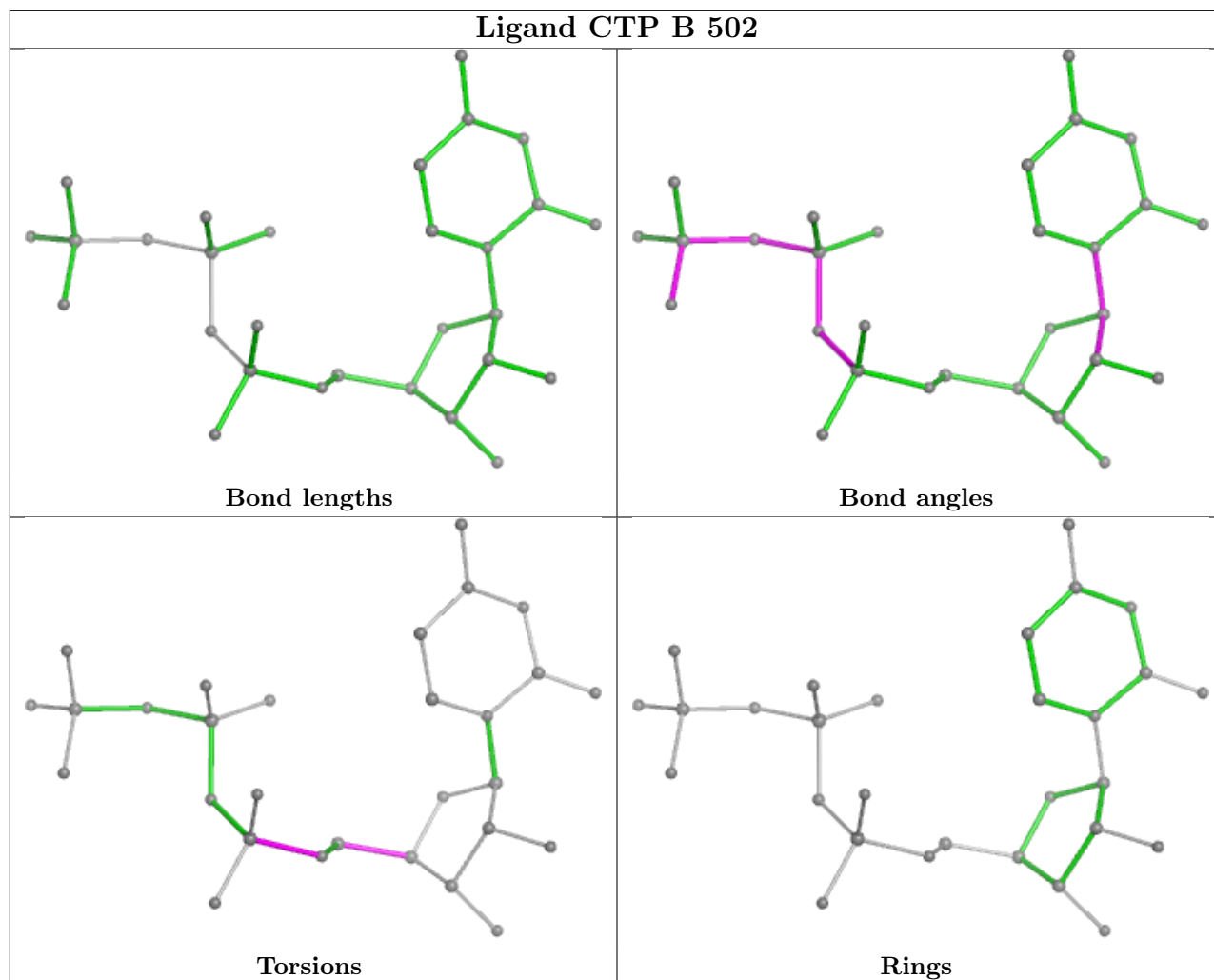
4 monomers are involved in 8 short contacts:

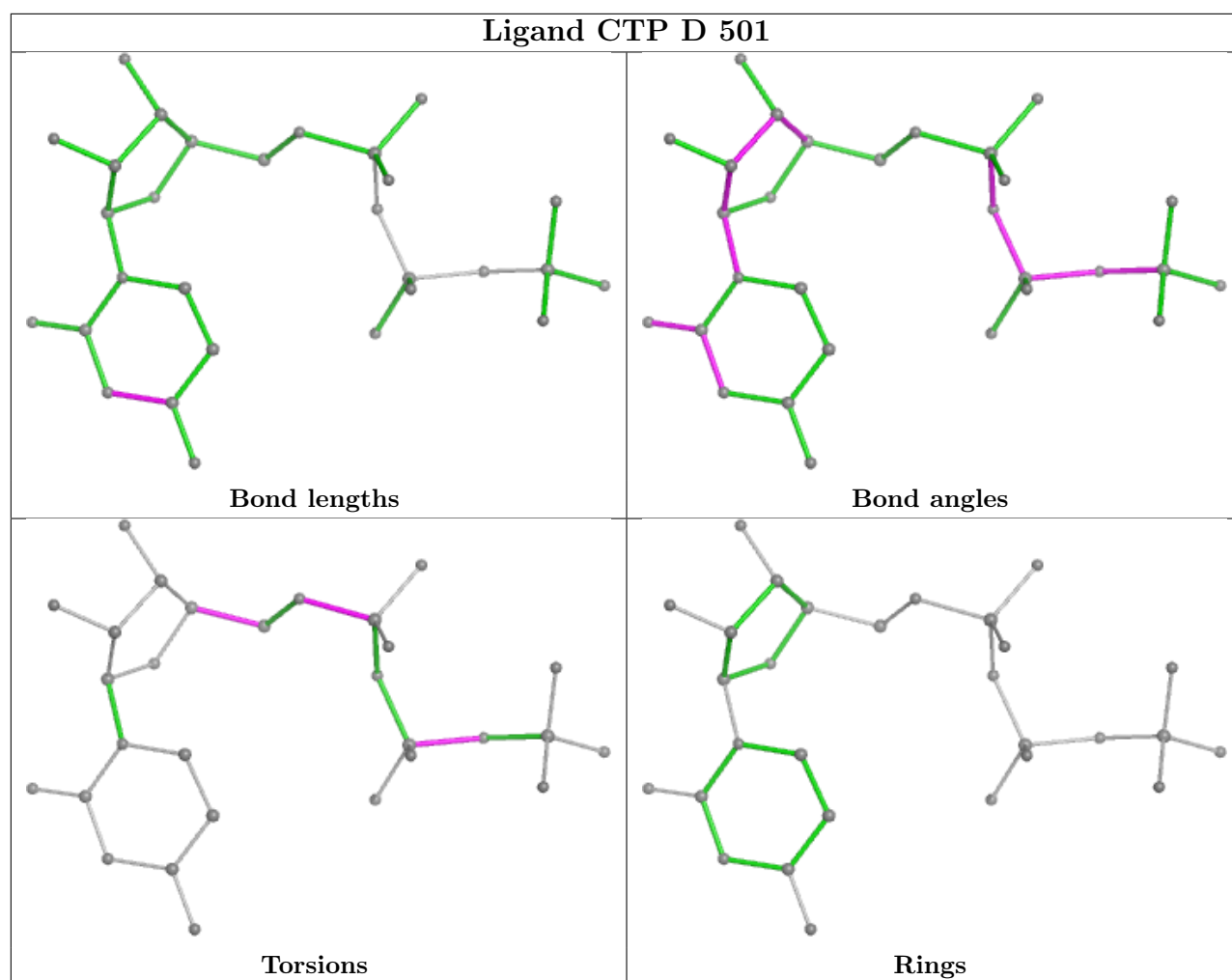
Mol	Chain	Res	Type	Clashes	Symm-Clashes
2	A	501	CTP	2	0
2	C	501	CTP	1	0
2	B	502	CTP	2	0
2	D	501	CTP	3	0

The following is a two-dimensional graphical depiction of Mogul quality analysis of bond lengths, bond angles, torsion angles, and ring geometry for all instances of the Ligand of Interest. In addition, ligands with molecular weight > 250 and outliers as shown on the validation Tables will also be included. For torsion angles, if less than 5% of the Mogul distribution of torsion angles is within 10 degrees of the torsion angle in question, then that torsion angle is considered an outlier. Any bond that is central to one or more torsion angles identified as an outlier by Mogul will be highlighted in the graph. For rings, the root-mean-square deviation (RMSD) between the ring in question and similar rings identified by Mogul is calculated over all ring torsion angles. If the average RMSD is greater than 60 degrees and the minimal RMSD between the ring in question and any Mogul-identified rings is also greater than 60 degrees, then that ring is considered an outlier. The outliers are highlighted in purple. The color gray indicates Mogul did not find sufficient equivalents in the CSD to analyse the geometry.









5.7 Other polymers [i](#)

There are no such residues in this entry.

5.8 Polymer linkage issues [i](#)

There are no chain breaks in this entry.

6 Fit of model and data

6.1 Protein, DNA and RNA chains

In the following table, the column labelled ‘#RSRZ > 2’ contains the number (and percentage) of RSRZ outliers, followed by percent RSRZ outliers for the chain as percentile scores relative to all X-ray entries and entries of similar resolution. The OWAB column contains the minimum, median, 95th percentile and maximum values of the occupancy-weighted average B-factor per residue. The column labelled ‘Q < 0.9’ lists the number of (and percentage) of residues with an average occupancy less than 0.9.

Mol	Chain	Analysed	<RSRZ>	#RSRZ>2	OWAB(Å ²)	Q<0.9
1	A	209/237 (88%)	-0.06	5 (2%) 59 54	46, 61, 95, 117	0
1	B	224/237 (94%)	0.11	11 (4%) 29 22	48, 70, 115, 153	0
1	C	213/237 (89%)	0.02	4 (1%) 66 62	50, 67, 110, 155	0
1	D	213/237 (89%)	0.09	4 (1%) 66 62	52, 70, 101, 134	0
All	All	859/948 (90%)	0.04	24 (2%) 53 47	46, 68, 107, 155	0

All (24) RSRZ outliers are listed below:

Mol	Chain	Res	Type	RSRZ
1	D	370	PHE	4.7
1	B	337	GLY	3.8
1	D	367	ASN	3.7
1	C	378	TRP	3.6
1	B	332	PHE	3.4
1	B	336	THR	3.3
1	B	364	VAL	3.2
1	B	299	PRO	3.1
1	A	335	GLU	2.9
1	C	364	VAL	2.9
1	B	367	ASN	2.7
1	D	210	GLY	2.6
1	B	365	GLY	2.5
1	D	359	LEU	2.5
1	C	243	ILE	2.4
1	A	378	TRP	2.4
1	C	282	PHE	2.4
1	A	334	ALA	2.3
1	B	203	LEU	2.3
1	A	239	THR	2.2
1	A	211	ASN	2.2

Continued on next page...

Continued from previous page...

Mol	Chain	Res	Type	RSRZ
1	B	377	GLY	2.1
1	B	334	ALA	2.1
1	B	339	ALA	2.1

6.2 Non-standard residues in protein, DNA, RNA chains [i](#)

There are no non-standard protein/DNA/RNA residues in this entry.

6.3 Carbohydrates [i](#)

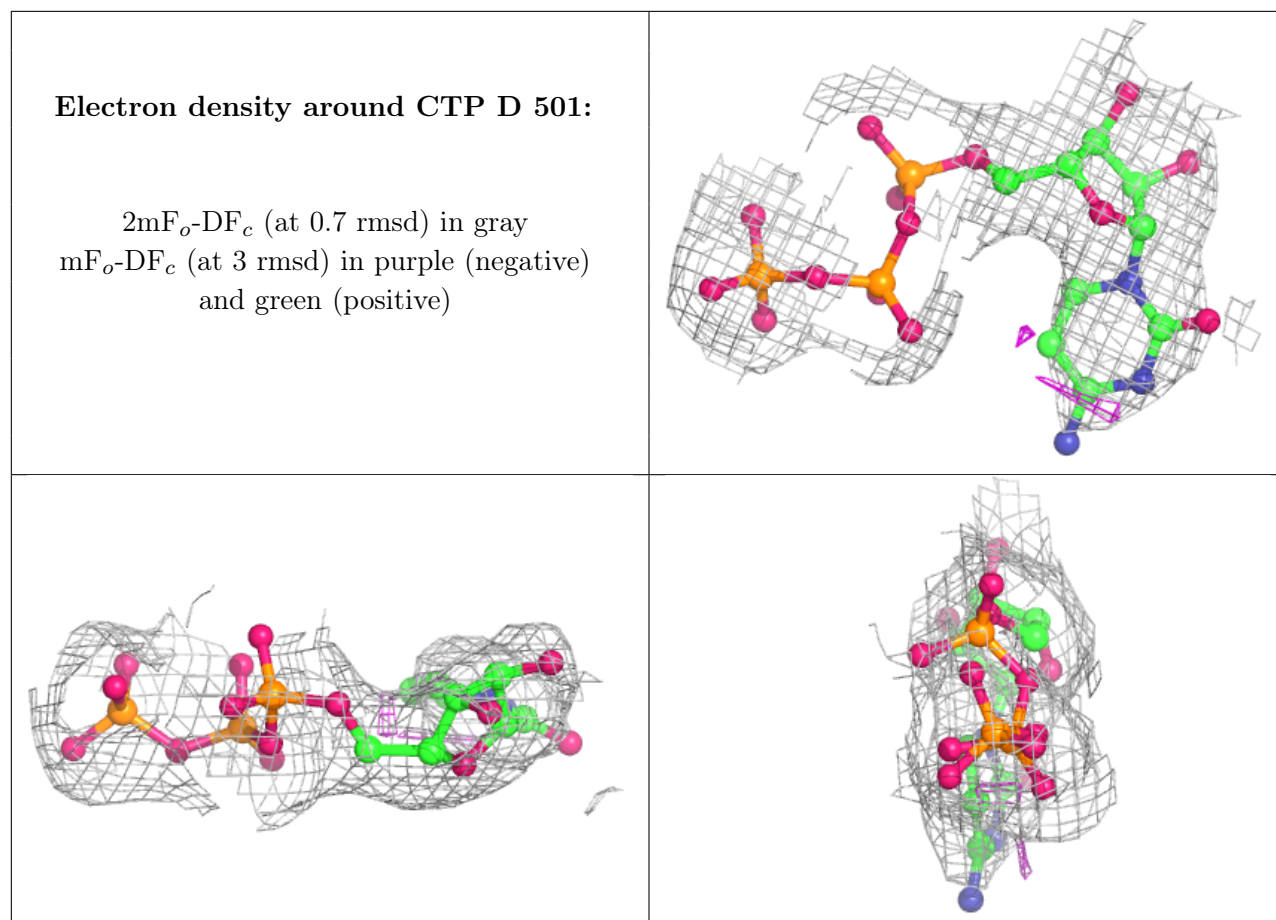
There are no monosaccharides in this entry.

6.4 Ligands [i](#)

In the following table, the Atoms column lists the number of modelled atoms in the group and the number defined in the chemical component dictionary. The B-factors column lists the minimum, median, 95th percentile and maximum values of B factors of atoms in the group. The column labelled 'Q< 0.9' lists the number of atoms with occupancy less than 0.9.

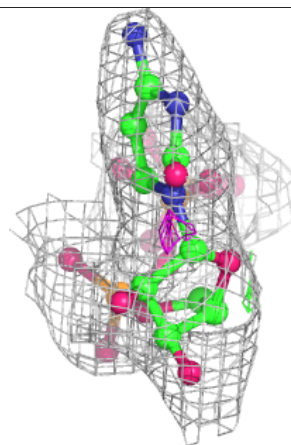
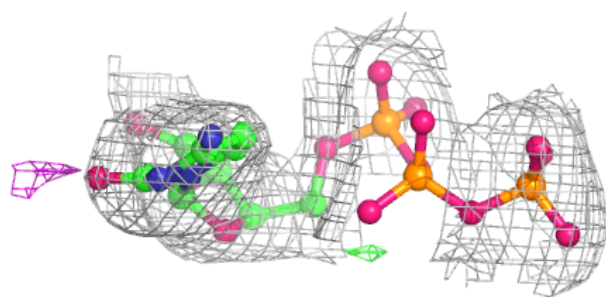
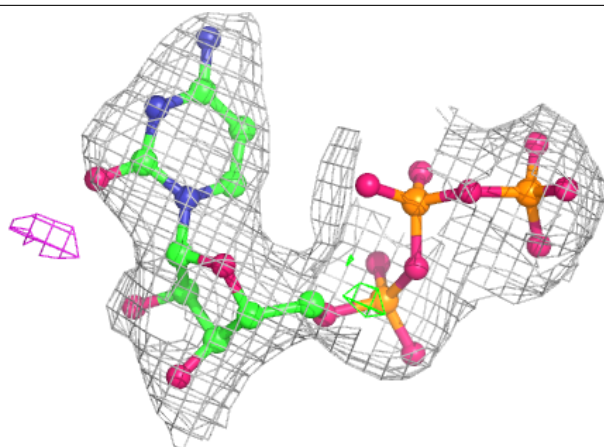
Mol	Type	Chain	Res	Atoms	RSCC	RSR	B-factors(Å ²)	Q<0.9
2	CTP	D	501	29/29	0.89	0.19	56,61,70,73	0
3	CA	B	503	1/1	0.91	0.07	69,69,69,69	0
2	CTP	B	502	29/29	0.92	0.17	61,69,79,82	0
4	VEO	B	501	14/14	0.92	0.26	55,63,67,69	0
2	CTP	C	501	29/29	0.95	0.14	48,53,59,67	0
3	CA	D	502	1/1	0.96	0.10	67,67,67,67	0
2	CTP	A	501	29/29	0.96	0.14	48,54,66,68	0
3	CA	A	502	1/1	0.97	0.14	63,63,63,63	0
3	CA	C	502	1/1	0.97	0.17	59,59,59,59	0

The following is a graphical depiction of the model fit to experimental electron density of all instances of the Ligand of Interest. In addition, ligands with molecular weight > 250 and outliers as shown on the geometry validation Tables will also be included. Each fit is shown from different orientation to approximate a three-dimensional view.

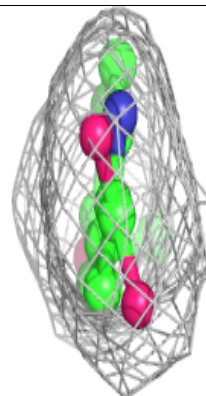
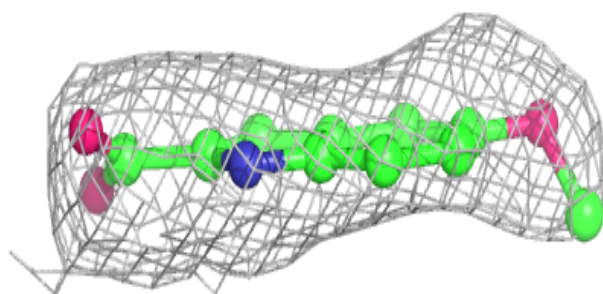
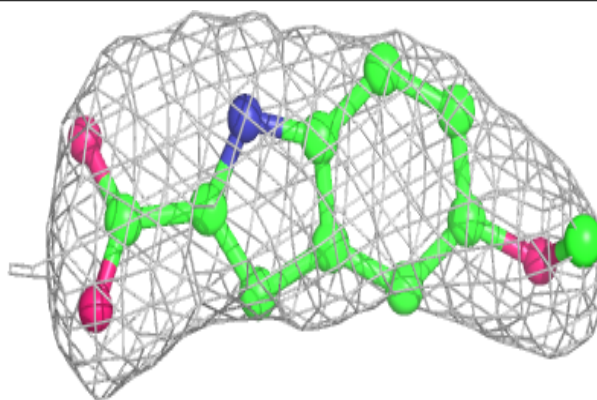


Electron density around CTP B 502:

$2mF_o-DF_c$ (at 0.7 rmsd) in gray
 mF_o-DF_c (at 3 rmsd) in purple (negative)
and green (positive)

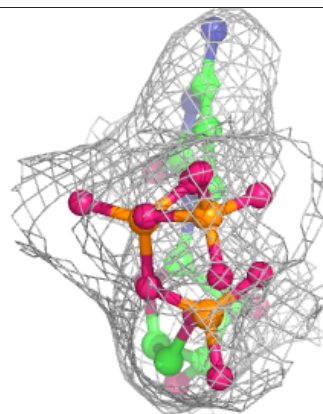
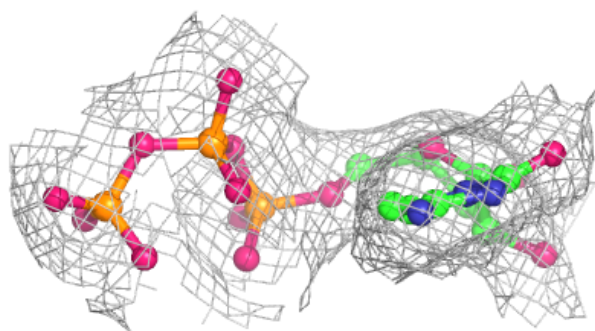
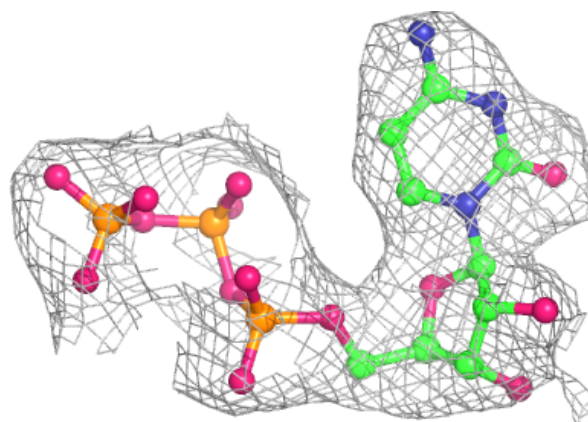
**Electron density around VEO B 501:**

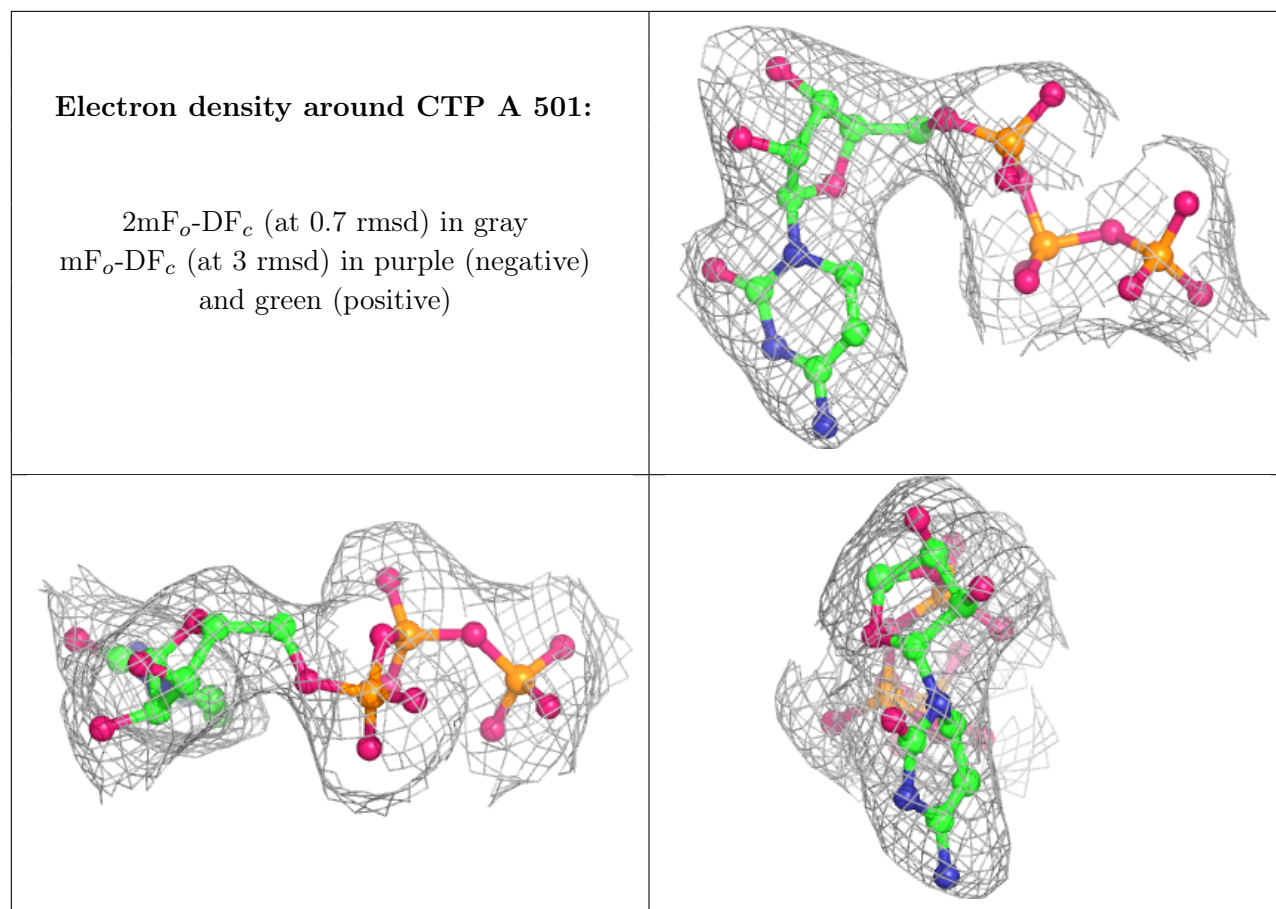
$2mF_o-DF_c$ (at 0.7 rmsd) in gray
 mF_o-DF_c (at 3 rmsd) in purple (negative)
and green (positive)



Electron density around CTP C 501:

$2mF_o-DF_c$ (at 0.7 rmsd) in gray
 mF_o-DF_c (at 3 rmsd) in purple (negative)
and green (positive)





6.5 Other polymers [i](#)

There are no such residues in this entry.