



Full wwPDB X-ray Structure Validation Report ⓘ

Nov 22, 2021 – 10:06 am GMT

PDB ID : 7OYW
Title : E.coli's putrescine receptor variant PotF/D (4JDF) with mutations E39D F88L S247D in complex with spermidine
Authors : Shanmugaratnam, S.; Kroeger, P.; Hocker, B.
Deposited on : 2021-06-25
Resolution : 1.28 Å(reported)

This is a Full wwPDB X-ray Structure Validation Report for a publicly released PDB entry.

We welcome your comments at validation@mail.wwpdb.org

A user guide is available at

<https://www.wwpdb.org/validation/2017/XrayValidationReportHelp>

with specific help available everywhere you see the ⓘ symbol.

The following versions of software and data (see [references ⓘ](#)) were used in the production of this report:

MolProbity : 4.02b-467
Mogul : 1.8.4 (270009), CSD as541be (2020)
Xtriage (Phenix) : 1.13
EDS : 2.23.2
buster-report : 1.1.7 (2018)
Percentile statistics : 20191225.v01 (using entries in the PDB archive December 25th 2019)
Refmac : 5.8.0267
CCP4 : 7.1.010 (Gargrove)
Ideal geometry (proteins) : Engh & Huber (2001)
Ideal geometry (DNA, RNA) : Parkinson et al. (1996)
Validation Pipeline (wwPDB-VP) : 2.23.2

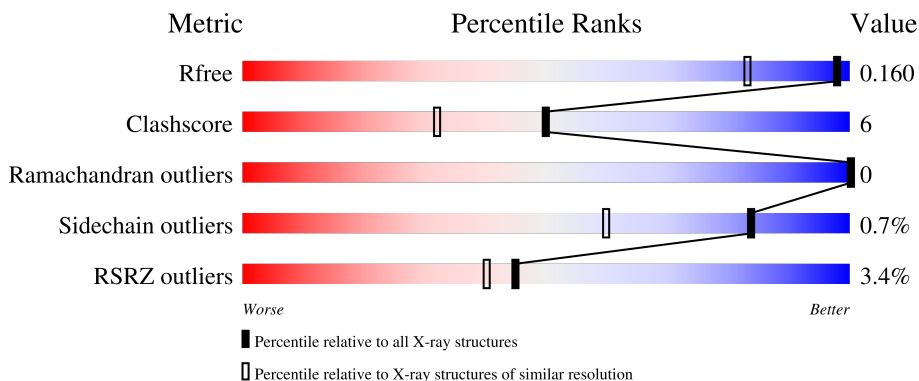
1 Overall quality at a glance

The following experimental techniques were used to determine the structure:

X-RAY DIFFRACTION


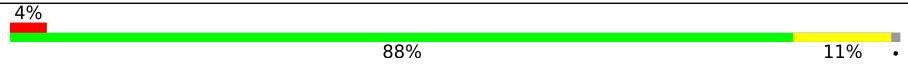
The reported resolution of this entry is 1.28 Å.

Percentile scores (ranging between 0-100) for global validation metrics of the entry are shown in the following graphic. The table shows the number of entries on which the scores are based.



Metric	Whole archive (#Entries)	Similar resolution (#Entries, resolution range(Å))
R_{free}	130704	1850 (1.30-1.26)
Clashscore	141614	1926 (1.30-1.26)
Ramachandran outliers	138981	1860 (1.30-1.26)
Sidechain outliers	138945	1859 (1.30-1.26)
RSRZ outliers	127900	1807 (1.30-1.26)

The table below summarises the geometric issues observed across the polymeric chains and their fit to the electron density. The red, orange, yellow and green segments of the lower bar indicate the fraction of residues that contain outliers for ≥ 3 , 2, 1 and 0 types of geometric quality criteria respectively. A grey segment represents the fraction of residues that are not modelled. The numeric value for each fraction is indicated below the corresponding segment, with a dot representing fractions $\leq 5\%$. The upper red bar (where present) indicates the fraction of residues that have poor fit to the electron density. The numeric value is given above the bar.

Mol	Chain	Length	Quality of chain
1	A	352	 3% 87% 11%
1	B	352	 4% 88% 11%

2 Entry composition [i](#)

There are 8 unique types of molecules in this entry. The entry contains 13182 atoms, of which 6212 are hydrogens and 0 are deuteriums.

In the tables below, the ZeroOcc column contains the number of atoms modelled with zero occupancy, the AltConf column contains the number of residues with at least one atom in alternate conformation and the Trace column contains the number of residues modelled with at most 2 atoms.

- Molecule 1 is a protein called Putrescine-binding periplasmic protein.

Mol	Chain	Residues	Atoms					ZeroOcc	AltConf	Trace	
			Total	C	H	N	O				S
1	A	348	6088	1966	3065	494	551	12	0	49	0
1	B	348	5957	1925	2986	487	548	11	0	40	0

There are 28 discrepancies between the modelled and reference sequences:

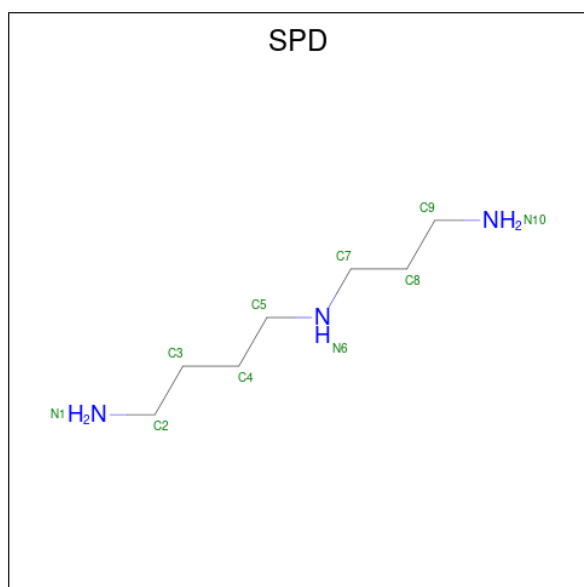
Chain	Residue	Modelled	Actual	Comment	Reference
A	38	THR	SER	engineered mutation	UNP A0A6S5NLK9
A	87	TYR	SER	engineered mutation	UNP A0A6S5NLK9
A	88	LEU	PHE	engineered mutation	UNP A0A6S5NLK9
A	182	ASP	ALA	engineered mutation	UNP A0A6S5NLK9
A	276	TRP	PHE	engineered mutation	UNP A0A6S5NLK9
A	348	GLN	LEU	engineered mutation	UNP A0A6S5NLK9
A	371	LEU	-	expression tag	UNP A0A6S5NLK9
A	372	GLU	-	expression tag	UNP A0A6S5NLK9
A	373	HIS	-	expression tag	UNP A0A6S5NLK9
A	374	HIS	-	expression tag	UNP A0A6S5NLK9
A	375	HIS	-	expression tag	UNP A0A6S5NLK9
A	376	HIS	-	expression tag	UNP A0A6S5NLK9
A	377	HIS	-	expression tag	UNP A0A6S5NLK9
A	378	HIS	-	expression tag	UNP A0A6S5NLK9
B	38	THR	SER	engineered mutation	UNP A0A6S5NLK9
B	87	TYR	SER	engineered mutation	UNP A0A6S5NLK9
B	88	LEU	PHE	engineered mutation	UNP A0A6S5NLK9
B	182	ASP	ALA	engineered mutation	UNP A0A6S5NLK9
B	276	TRP	PHE	engineered mutation	UNP A0A6S5NLK9
B	348	GLN	LEU	engineered mutation	UNP A0A6S5NLK9
B	371	LEU	-	expression tag	UNP A0A6S5NLK9
B	372	GLU	-	expression tag	UNP A0A6S5NLK9
B	373	HIS	-	expression tag	UNP A0A6S5NLK9
B	374	HIS	-	expression tag	UNP A0A6S5NLK9
B	375	HIS	-	expression tag	UNP A0A6S5NLK9

Continued on next page...

Continued from previous page...

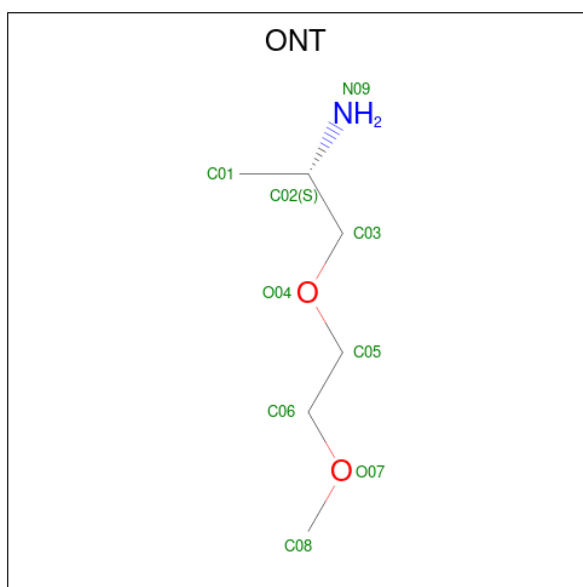
Chain	Residue	Modelled	Actual	Comment	Reference
B	376	HIS	-	expression tag	UNP A0A6S5NLK9
B	377	HIS	-	expression tag	UNP A0A6S5NLK9
B	378	HIS	-	expression tag	UNP A0A6S5NLK9

- Molecule 2 is SPERMIDINE (three-letter code: SPD) (formula: C₇H₁₉N₃) (labeled as "Ligand of Interest" by depositor).



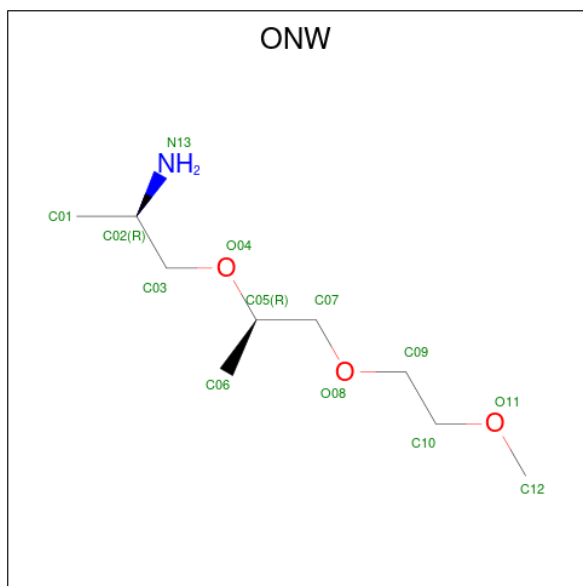
Mol	Chain	Residues	Atoms				ZeroOcc	AltConf
			Total	C	H	N		
2	A	1	56	14	36	6	0	1
2	B	1	56	14	36	6	0	1

- Molecule 3 is (2 {S})-1-(2-methoxyethoxy)propan-2-amine (three-letter code: ONT) (formula: C₆H₁₅NO₂).



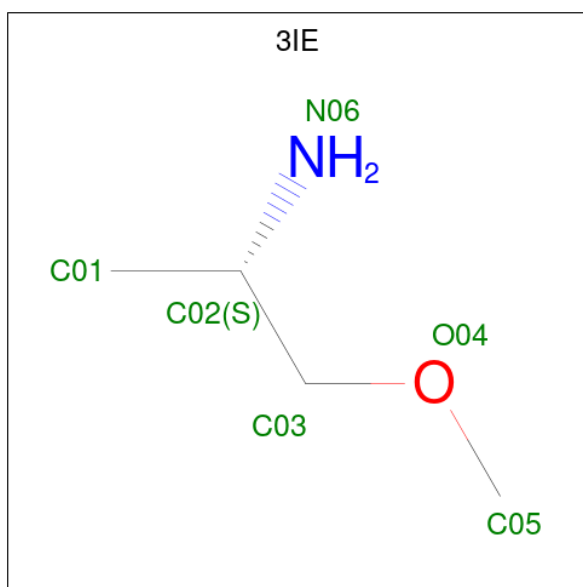
Mol	Chain	Residues	Atoms					ZeroOcc	AltConf
			Total	C	H	N	O		
3	A	1	22	6	13	1	2	0	0

- Molecule 4 is (2 {R})-1-[(2 {R})-1-(2-methoxyethoxy)propan-2-yl]oxypropan-2-amine (three-letter code: ONW) (formula: C₉H₂₁NO₃).



Mol	Chain	Residues	Atoms					ZeroOcc	AltConf
			Total	C	H	N	O		
4	A	1	34	9	21	1	3	0	0

- Molecule 5 is (2 {S})-1-methoxypropan-2-amine (three-letter code: 3IE) (formula: C₄H₁₁NO).

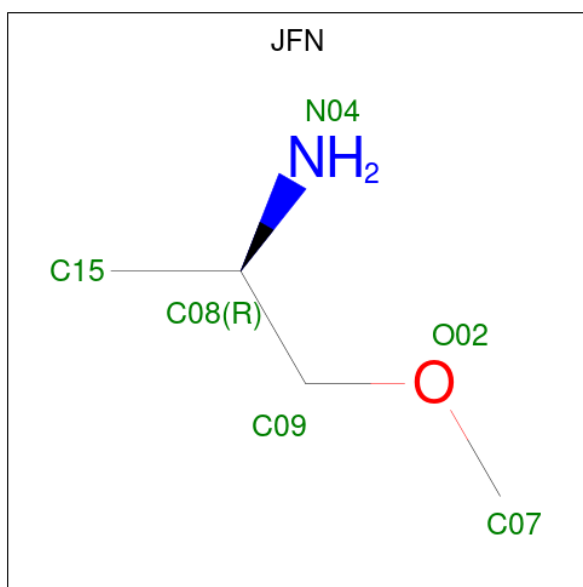


Mol	Chain	Residues	Atoms					ZeroOcc	AltConf
			Total	C	H	N	O		
5	A	1	Total	C	H	N	O	0	0
			17	4	11	1	1		
5	A	1	Total	C	H	N	O	0	0
			17	4	11	1	1		
5	B	1	Total	C	H	N	O	0	0
			17	4	11	1	1		
5	B	1	Total	C	H	N	O	0	0
			17	4	11	1	1		

- Molecule 6 is CHLORIDE ION (three-letter code: CL) (formula: Cl).

Mol	Chain	Residues	Atoms		ZeroOcc	AltConf
			Total	Cl		
6	A	3	Total	Cl	0	1
			4	4		
6	B	1	Total	Cl	0	1
			2	2		

- Molecule 7 is (2R)-1-methoxypropan-2-amine (three-letter code: JFN) (formula: C₄H₁₁NO).



Mol	Chain	Residues	Atoms					ZeroOcc	AltConf
			Total	C	H	N	O		
7	B	1	17	4	11	1	1	0	0

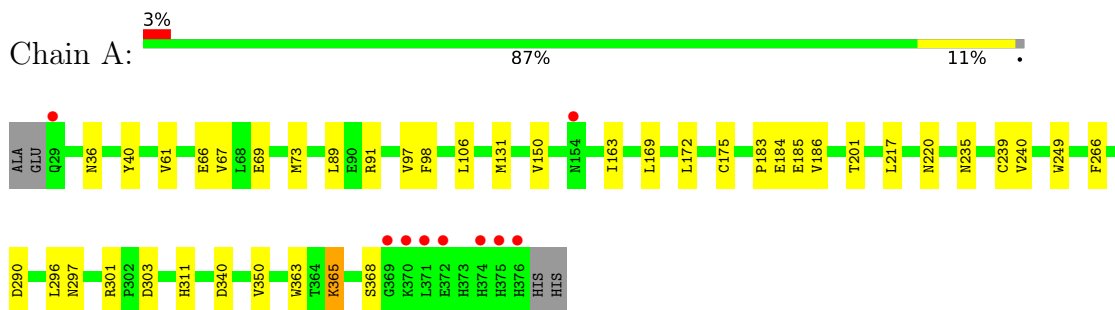
- Molecule 8 is water.

Mol	Chain	Residues	Atoms		ZeroOcc	AltConf
8	A	464	Total	O	0	9
			474	474		
8	B	396	Total	O	0	8
			404	404		

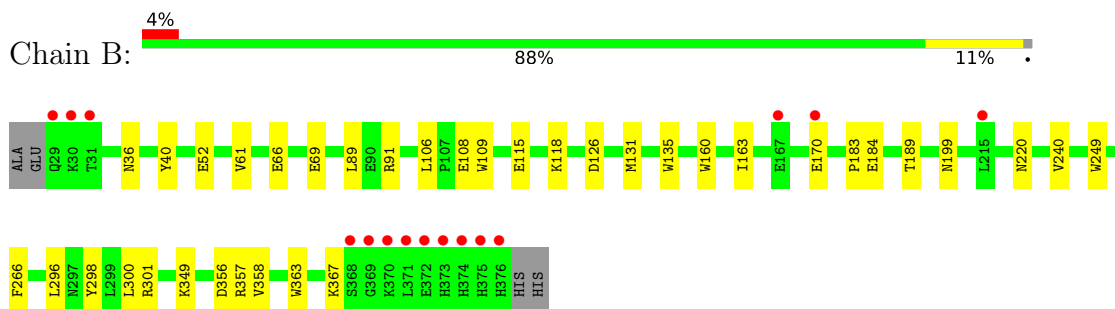
3 Residue-property plots [i](#)

These plots are drawn for all protein, RNA, DNA and oligosaccharide chains in the entry. The first graphic for a chain summarises the proportions of the various outlier classes displayed in the second graphic. The second graphic shows the sequence view annotated by issues in geometry and electron density. Residues are color-coded according to the number of geometric quality criteria for which they contain at least one outlier: green = 0, yellow = 1, orange = 2 and red = 3 or more. A red dot above a residue indicates a poor fit to the electron density ($RSRZ > 2$). Stretches of 2 or more consecutive residues without any outlier are shown as a green connector. Residues present in the sample, but not in the model, are shown in grey.

- Molecule 1: Putrescine-binding periplasmic protein



- Molecule 1: Putrescine-binding periplasmic protein



4 Data and refinement statistics

Property	Value	Source
Space group	P 21 21 2	Depositor
Cell constants a, b, c, α , β , γ	116.88Å 71.28Å 92.42Å 90.00° 90.00° 90.00°	Depositor
Resolution (Å)	49.39 – 1.28 49.39 – 1.28	Depositor EDS
% Data completeness (in resolution range)	99.3 (49.39-1.28) 99.4 (49.39-1.28)	Depositor EDS
R_{merge}	0.10	Depositor
R_{sym}	(Not available)	Depositor
$\langle I/\sigma(I) \rangle$ ¹	0.99 (at 1.28Å)	Xtrriage
Refinement program	PHENIX 1.19.2_4158	Depositor
R, R_{free}	0.132 , 0.161 0.132 , 0.160	Depositor DCC
R_{free} test set	2098 reflections (1.06%)	wwPDB-VP
Wilson B-factor (Å ²)	16.3	Xtrriage
Anisotropy	0.202	Xtrriage
Bulk solvent k_{sol} (e/Å ³), B_{sol} (Å ²)	(Not available) , (Not available)	EDS
L-test for twinning ²	$\langle L \rangle = 0.51$, $\langle L^2 \rangle = 0.34$	Xtrriage
Estimated twinning fraction	No twinning to report.	Xtrriage
F_o, F_c correlation	0.98	EDS
Total number of atoms	13182	wwPDB-VP
Average B, all atoms (Å ²)	22.0	wwPDB-VP

Xtrriage's analysis on translational NCS is as follows: *The largest off-origin peak in the Patterson function is 4.49% of the height of the origin peak. No significant pseudotranslation is detected.*

¹Intensities estimated from amplitudes.

²Theoretical values of $\langle |L| \rangle$, $\langle L^2 \rangle$ for acentric reflections are 0.5, 0.333 respectively for untwinned datasets, and 0.375, 0.2 for perfectly twinned datasets.

5 Model quality i

5.1 Standard geometry i

Bond lengths and bond angles in the following residue types are not validated in this section: ONT, SPD, 3IE, JFN, CL, ONW

The Z score for a bond length (or angle) is the number of standard deviations the observed value is removed from the expected value. A bond length (or angle) with $|Z| > 5$ is considered an outlier worth inspection. RMSZ is the root-mean-square of all Z scores of the bond lengths (or angles).

Mol	Chain	Bond lengths		Bond angles	
		RMSZ	# Z >5	RMSZ	# Z >5
1	A	0.45	0/3255	0.68	2/4422 (0.0%)
1	B	0.39	0/3176	0.64	0/4318
All	All	0.42	0/6431	0.66	2/8740 (0.0%)

There are no bond length outliers.

All (2) bond angle outliers are listed below:

Mol	Chain	Res	Type	Atoms	Z	Observed(°)	Ideal(°)
1	A	365[A]	LYS	CD-CE-NZ	5.70	124.82	111.70
1	A	365[B]	LYS	CD-CE-NZ	5.70	124.82	111.70

There are no chirality outliers.

There are no planarity outliers.

5.2 Too-close contacts i

In the following table, the Non-H and H(model) columns list the number of non-hydrogen atoms and hydrogen atoms in the chain respectively. The H(added) column lists the number of hydrogen atoms added and optimized by MolProbity. The Clashes column lists the number of clashes within the asymmetric unit, whereas Symm-Clashes lists symmetry-related clashes.

Mol	Chain	Non-H	H(model)	H(added)	Clashes	Symm-Clashes
1	A	3023	3065	3081	41	2
1	B	2971	2986	3001	30	1
2	A	20	36	38	1	0
2	B	20	36	38	0	0
3	A	9	13	0	0	0
4	A	13	21	0	0	0
5	A	12	22	0	0	0

Continued on next page...

Continued from previous page...

Mol	Chain	Non-H	H(model)	H(added)	Clashes	Symm-Clashes
5	B	12	22	0	0	0
6	A	4	0	0	0	0
6	B	2	0	0	0	0
7	B	6	11	0	0	0
8	A	474	0	0	12	1
8	B	404	0	0	12	0
All	All	6970	6212	6158	71	2

The all-atom clashscore is defined as the number of clashes found per 1000 atoms (including hydrogen atoms). The all-atom clashscore for this structure is 6.

All (71) close contacts within the same asymmetric unit are listed below, sorted by their clash magnitude.

Atom-1	Atom-2	Interatomic distance (Å)	Clash overlap (Å)
1:B:184[B]:GLU:OE1	8:B:832[B]:HOH:O	1.61	1.17
1:A:185[B]:GLU:OE2	2:A:401[B]:SPD:N1	1.89	1.05
1:B:52[A]:GLU:OE2	8:B:501:HOH:O	1.88	0.91
1:B:184[B]:GLU:OE2	8:B:502:HOH:O	1.90	0.90
1:B:358:VAL:HG12	8:B:505:HOH:O	1.81	0.81
1:B:126[B]:ASP:OD1	8:B:503:HOH:O	2.03	0.77
1:A:368[B]:SER:OG	8:A:501:HOH:O	2.03	0.76
1:B:357:ARG:NH1	8:B:505:HOH:O	2.18	0.76
1:A:106:LEU:HA	1:A:297[A]:ASN:OD1	1.87	0.74
1:A:175[A]:CYS:HB2	1:A:239[A]:CYS:SG	2.28	0.73
1:B:356:ASP:OD1	8:B:736[B]:HOH:O	2.09	0.70
1:A:69:GLU:OE2	1:A:91[B]:ARG:HD3	1.95	0.66
1:B:367:LYS:NZ	8:B:663[B]:HOH:O	2.24	0.65
1:A:172:LEU:HD13	1:A:240[B]:VAL:HG21	1.80	0.63
1:B:115:GLU:OE2	1:B:118:LYS:NZ	2.32	0.63
1:A:175[A]:CYS:CB	1:A:239[A]:CYS:SG	2.87	0.62
1:B:69:GLU:OE2	1:B:91[B]:ARG:HD3	2.00	0.61
1:B:170[B]:GLU:OE2	8:B:504:HOH:O	2.15	0.61
1:A:301[C]:ARG:HG2	1:A:303:ASP:OD1	2.04	0.57
1:A:106:LEU:HD13	1:A:131[B]:MET:CE	2.35	0.55
1:A:89[A]:LEU:HD22	1:A:98:PHE:CE2	2.42	0.55
1:B:220:ASN:ND2	8:B:507:HOH:O	2.33	0.55
1:B:163[B]:ILE:CG2	1:B:240[B]:VAL:HG21	2.37	0.53
1:B:298:TYR:HA	1:B:301[C]:ARG:HD2	1.90	0.53
1:A:73[B]:MET:HE2	1:A:97:VAL:HG11	1.91	0.52
1:B:199:ASN:HB3	1:B:349[B]:LYS:HE2	1.92	0.51
1:A:340:ASP:OD1	8:A:502:HOH:O	2.18	0.51

Continued on next page...

Continued from previous page...

Atom-1	Atom-2	Interatomic distance (Å)	Clash overlap (Å)
1:A:365[A]:LYS:HE3	8:A:814:HOH:O	2.11	0.51
1:A:163:ILE:HD12	1:A:240[B]:VAL:HG12	1.94	0.50
1:A:184[B]:GLU:OE1	8:A:503:HOH:O	2.19	0.50
1:B:135[B]:TRP:NE1	8:B:508:HOH:O	2.33	0.50
1:A:220:ASN:ND2	8:A:515:HOH:O	2.45	0.50
1:A:36:ASN:O	1:A:61:VAL:HA	2.11	0.49
1:B:36:ASN:O	1:B:61:VAL:HA	2.12	0.49
1:A:290[B]:ASP:OD1	8:A:504:HOH:O	2.19	0.48
1:A:235[B]:ASN:OD1	8:A:505:HOH:O	2.20	0.48
1:B:183:PRO:HB3	1:B:363:TRP:CG	2.49	0.48
1:B:160:TRP:CZ3	1:B:163[B]:ILE:HD11	2.49	0.47
1:A:73[B]:MET:CE	1:A:97:VAL:HG11	2.43	0.47
1:B:109:TRP:CE3	1:B:131[B]:MET:HE2	2.50	0.46
1:A:186:VAL:HG11	1:A:363[B]:TRP:CZ3	2.50	0.46
1:A:297[B]:ASN:ND2	8:A:507:HOH:O	2.48	0.46
1:B:106:LEU:HD13	1:B:131[B]:MET:CE	2.46	0.45
1:B:189:THR:OG1	8:B:506:HOH:O	2.21	0.45
1:A:66[A]:GLU:HG3	8:A:514:HOH:O	2.17	0.45
1:A:311[B]:HIS:CD2	8:A:516:HOH:O	2.70	0.44
1:A:175[A]:CYS:HB3	1:A:239[A]:CYS:SG	2.58	0.44
1:B:131[B]:MET:CE	1:B:300:LEU:HD11	2.48	0.44
1:A:183:PRO:HB3	1:A:363[A]:TRP:CG	2.53	0.43
1:A:365[A]:LYS:HB2	1:A:365[A]:LYS:HE2	1.78	0.43
1:A:131[B]:MET:HE1	1:A:296:LEU:HB3	1.99	0.43
1:B:160:TRP:HZ3	1:B:163[B]:ILE:HD11	1.83	0.43
1:B:108:GLU:HG3	1:B:301[B]:ARG:HH11	1.83	0.43
1:B:163[B]:ILE:CG2	1:B:240[B]:VAL:CG2	2.97	0.42
1:A:91[A]:ARG:HD3	1:A:350:VAL:HG13	2.00	0.42
1:A:169[B]:LEU:HD12	1:A:217:LEU:HD22	2.02	0.42
1:A:175[B]:CYS:SG	1:A:239[B]:CYS:CB	3.08	0.42
1:A:183:PRO:HB3	1:A:363[B]:TRP:CG	2.54	0.42
1:A:89[A]:LEU:HD22	1:A:98:PHE:CD2	2.55	0.42
1:A:365[A]:LYS:CE	8:A:814:HOH:O	2.66	0.42
1:B:131[B]:MET:HE2	1:B:300:LEU:HD11	2.01	0.42
1:A:106:LEU:HD13	1:A:131[B]:MET:HE2	2.02	0.42
1:A:150:VAL:HG21	1:A:175[A]:CYS:SG	2.60	0.42
1:B:131[B]:MET:HE1	1:B:296:LEU:HB3	2.02	0.41
1:A:301[B]:ARG:NH2	8:A:521:HOH:O	2.49	0.41
1:B:249:TRP:CZ2	1:B:266:PHE:HB3	2.55	0.41
1:A:169[A]:LEU:HD12	1:A:169[A]:LEU:HA	1.94	0.41
1:A:249:TRP:CZ2	1:A:266:PHE:HB3	2.56	0.41

Continued on next page...

Continued from previous page...

Atom-1	Atom-2	Interatomic distance (Å)	Clash overlap (Å)
1:A:66[B]:GLU:HG2	1:A:67:VAL:N	2.36	0.40
1:B:109:TRP:CZ3	1:B:131[B]:MET:HE2	2.57	0.40

All (2) symmetry-related close contacts are listed below. The label for Atom-2 includes the symmetry operator and encoded unit-cell translations to be applied.

Atom-1	Atom-2	Interatomic distance (Å)	Clash overlap (Å)
1:A:368[B]:SER:OG	8:A:694:HOH:O[2_565]	1.94	0.26
1:A:201:THR:OG1	1:B:126[B]:ASP:OD2[2_565]	2.03	0.17

5.3 Torsion angles [i](#)

5.3.1 Protein backbone [i](#)

In the following table, the Percentiles column shows the percent Ramachandran outliers of the chain as a percentile score with respect to all X-ray entries followed by that with respect to entries of similar resolution.

The Analysed column shows the number of residues for which the backbone conformation was analysed, and the total number of residues.

Mol	Chain	Analysed	Favoured	Allowed	Outliers	Percentiles	
1	A	397/352 (113%)	390 (98%)	7 (2%)	0	100	100
1	B	387/352 (110%)	378 (98%)	9 (2%)	0	100	100
All	All	784/704 (111%)	768 (98%)	16 (2%)	0	100	100

There are no Ramachandran outliers to report.

5.3.2 Protein sidechains [i](#)

In the following table, the Percentiles column shows the percent sidechain outliers of the chain as a percentile score with respect to all X-ray entries followed by that with respect to entries of similar resolution.

The Analysed column shows the number of residues for which the sidechain conformation was analysed, and the total number of residues.

Mol	Chain	Analysed	Rotameric	Outliers	Percentiles	
1	A	346/299 (116%)	345 (100%)	1 (0%)	92	78

Continued on next page...

Continued from previous page...

Mol	Chain	Analysed	Rotameric	Outliers	Percentiles
1	B	337/299 (113%)	333 (99%)	4 (1%)	71 38
All	All	683/598 (114%)	678 (99%)	5 (1%)	84 60

All (5) residues with a non-rotameric sidechain are listed below:

Mol	Chain	Res	Type
1	A	40	TYR
1	B	40	TYR
1	B	66[A]	GLU
1	B	66[B]	GLU
1	B	89	LEU

Sometimes sidechains can be flipped to improve hydrogen bonding and reduce clashes. There are no such sidechains identified.

5.3.3 RNA [i](#)

There are no RNA molecules in this entry.

5.4 Non-standard residues in protein, DNA, RNA chains [i](#)

There are no non-standard protein/DNA/RNA residues in this entry.

5.5 Carbohydrates [i](#)

There are no monosaccharides in this entry.

5.6 Ligand geometry [i](#)

Of 17 ligands modelled in this entry, 6 are monoatomic - leaving 11 for Mogul analysis.

There are no bond length outliers.

There are no bond angle outliers.

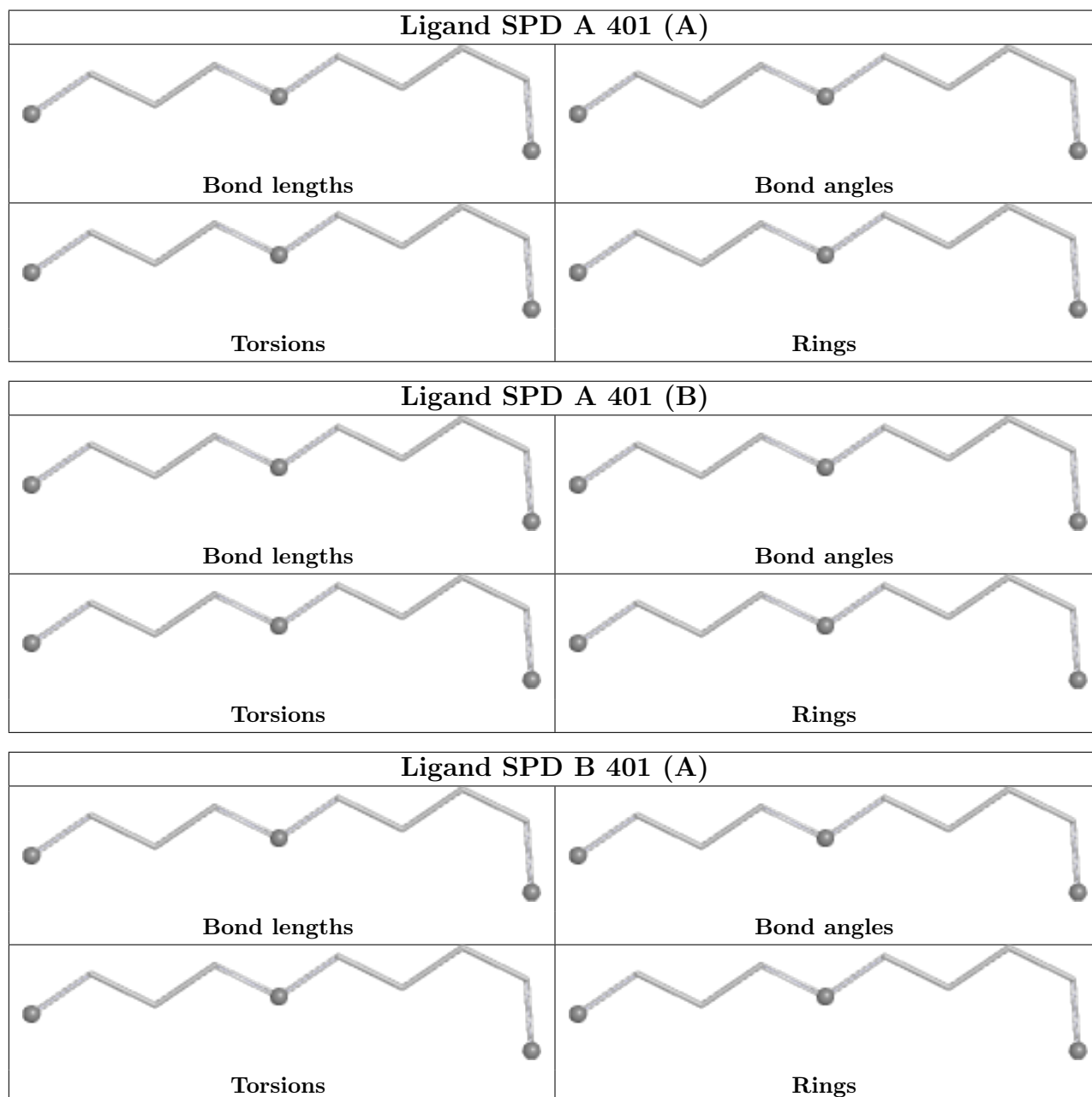
There are no chirality outliers.

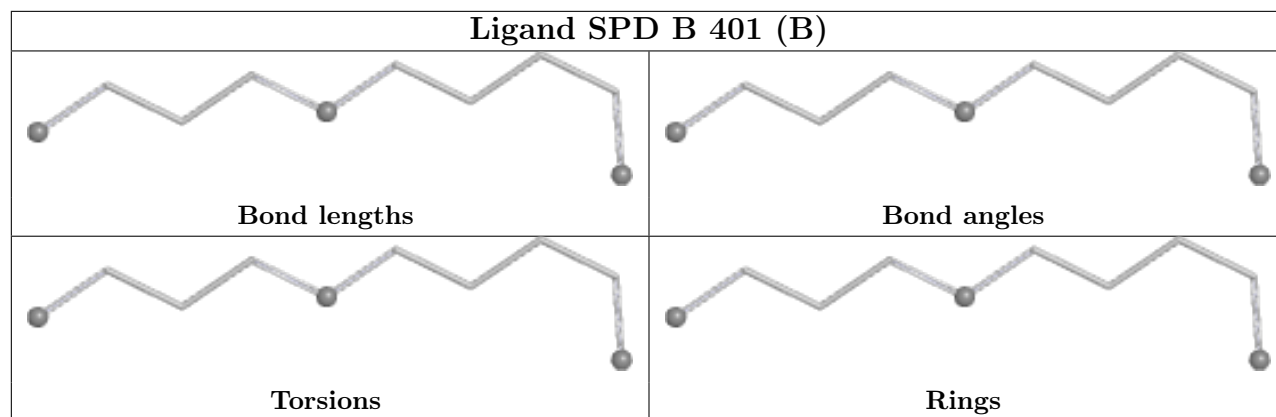
There are no torsion outliers.

There are no ring outliers.

No monomer is involved in short contacts.

The following is a two-dimensional graphical depiction of Mogul quality analysis of bond lengths, bond angles, torsion angles, and ring geometry for all instances of the Ligand of Interest. In addition, ligands with molecular weight > 250 and outliers as shown on the validation Tables will also be included. For torsion angles, if less than 5% of the Mogul distribution of torsion angles is within 10 degrees of the torsion angle in question, then that torsion angle is considered an outlier. Any bond that is central to one or more torsion angles identified as an outlier by Mogul will be highlighted in the graph. For rings, the root-mean-square deviation (RMSD) between the ring in question and similar rings identified by Mogul is calculated over all ring torsion angles. If the average RMSD is greater than 60 degrees and the minimal RMSD between the ring in question and any Mogul-identified rings is also greater than 60 degrees, then that ring is considered an outlier. The outliers are highlighted in purple. The color gray indicates Mogul did not find sufficient equivalents in the CSD to analyse the geometry.





5.7 Other polymers [i](#)

There are no such residues in this entry.

5.8 Polymer linkage issues [i](#)

There are no chain breaks in this entry.

6 Fit of model and data

6.1 Protein, DNA and RNA chains

In the following table, the column labelled ‘#RSRZ > 2’ contains the number (and percentage) of RSRZ outliers, followed by percent RSRZ outliers for the chain as percentile scores relative to all X-ray entries and entries of similar resolution. The OWAB column contains the minimum, median, 95th percentile and maximum values of the occupancy-weighted average B-factor per residue. The column labelled ‘Q < 0.9’ lists the number of (and percentage) of residues with an average occupancy less than 0.9.

Mol	Chain	Analysed	<RSRZ>	#RSRZ>2	OWAB(Å ²)	Q<0.9
1	A	348/352 (98%)	-0.08	9 (2%) 56 51	11, 17, 27, 55	0
1	B	348/352 (98%)	0.06	15 (4%) 35 31	12, 18, 29, 50	0
All	All	696/704 (98%)	-0.01	24 (3%) 45 40	11, 18, 29, 55	0

All (24) RSRZ outliers are listed below:

Mol	Chain	Res	Type	RSRZ
1	A	371	LEU	9.9
1	B	371	LEU	9.0
1	B	376	HIS	7.0
1	A	376	HIS	6.3
1	A	369	GLY	5.0
1	B	369	GLY	4.1
1	B	29	GLN	4.0
1	B	372	GLU	4.0
1	B	370	LYS	3.8
1	A	374	HIS	3.4
1	A	372	GLU	3.4
1	B	170[A]	GLU	3.1
1	A	29	GLN	3.1
1	B	375	HIS	3.1
1	A	375	HIS	3.0
1	A	370	LYS	2.7
1	A	154	ASN	2.7
1	B	30	LYS	2.6
1	B	373	HIS	2.6
1	B	31	THR	2.6
1	B	167[A]	GLU	2.6
1	B	374	HIS	2.5
1	B	215	LEU	2.5
1	B	368[A]	SER	2.2

6.2 Non-standard residues in protein, DNA, RNA chains [i](#)

There are no non-standard protein/DNA/RNA residues in this entry.

6.3 Carbohydrates [i](#)

There are no monosaccharides in this entry.

6.4 Ligands [i](#)

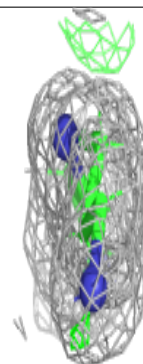
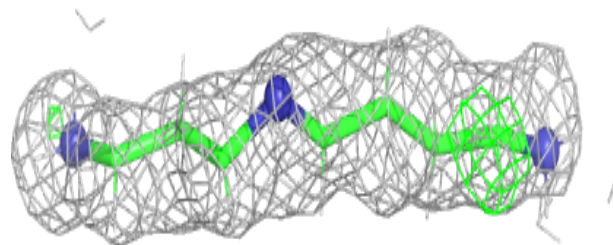
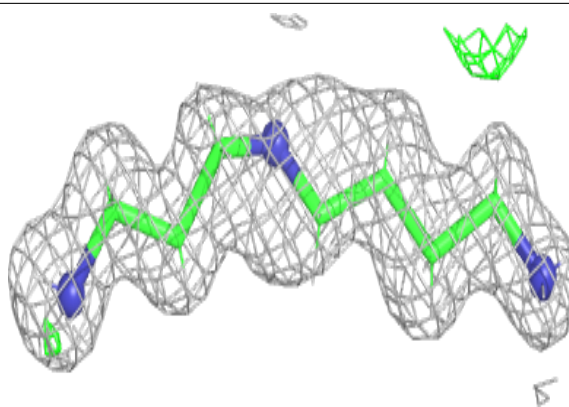
In the following table, the Atoms column lists the number of modelled atoms in the group and the number defined in the chemical component dictionary. The B-factors column lists the minimum, median, 95th percentile and maximum values of B factors of atoms in the group. The column labelled 'Q< 0.9' lists the number of atoms with occupancy less than 0.9.

Mol	Type	Chain	Res	Atoms	RSCC	RSR	B-factors(\AA^2)	Q<0.9
5	3IE	B	402	6/6	0.37	0.22	52,63,66,66	0
5	3IE	A	405	6/6	0.46	0.21	52,63,64,64	0
5	3IE	A	404	6/6	0.53	0.25	58,70,72,72	0
4	ONW	A	403	13/13	0.54	0.18	45,55,65,65	0
7	JFN	B	404	6/6	0.60	0.15	47,56,61,61	0
5	3IE	B	403	6/6	0.70	0.11	48,58,62,62	0
3	ONT	A	402	9/9	0.74	0.18	40,48,52,52	0
2	SPD	A	401[B]	10/10	0.95	0.09	14,18,19,20	28
2	SPD	A	401[A]	10/10	0.95	0.09	12,15,19,22	28
6	CL	A	408	1/1	0.97	0.15	59,59,59,59	0
2	SPD	B	401[A]	10/10	0.98	0.09	14,18,23,26	28
2	SPD	B	401[B]	10/10	0.98	0.09	14,17,20,20	28
6	CL	B	405[B]	1/1	0.99	0.07	36,36,36,36	1
6	CL	B	405[A]	1/1	0.99	0.07	13,13,13,13	1
6	CL	A	406[B]	1/1	1.00	0.06	18,18,18,18	1
6	CL	A	407	1/1	1.00	0.03	44,44,44,44	0
6	CL	A	406[A]	1/1	1.00	0.06	30,30,30,30	1

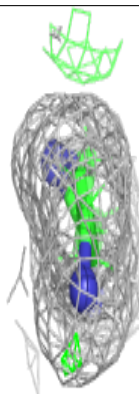
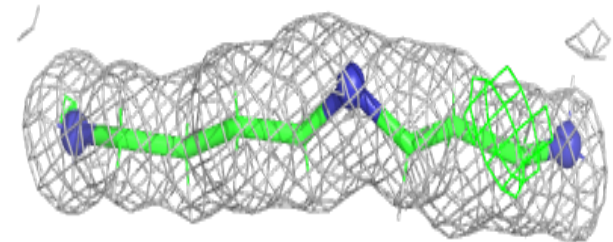
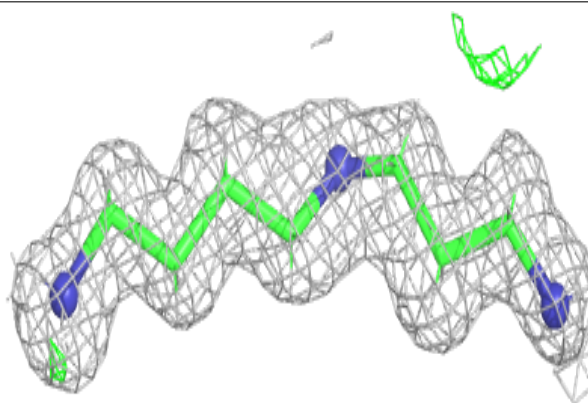
The following is a graphical depiction of the model fit to experimental electron density of all instances of the Ligand of Interest. In addition, ligands with molecular weight > 250 and outliers as shown on the geometry validation Tables will also be included. Each fit is shown from different orientation to approximate a three-dimensional view.

Electron density around SPD A 401 (B):

$2mF_o-DF_c$ (at 0.7 rmsd) in gray
 mF_o-DF_c (at 3 rmsd) in purple (negative)
and green (positive)

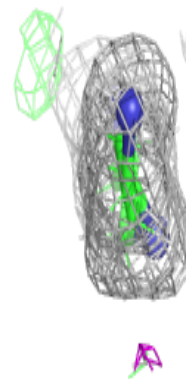
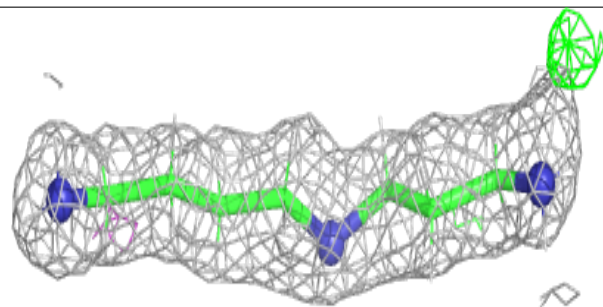
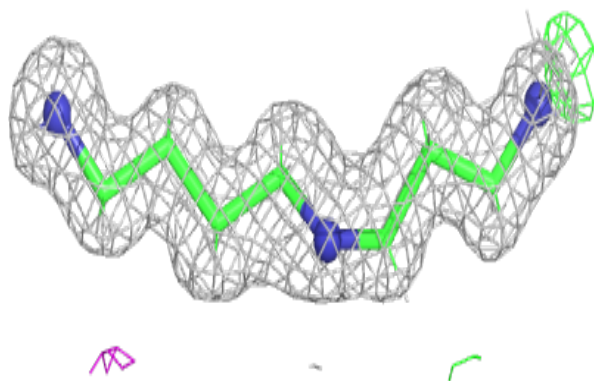
**Electron density around SPD A 401 (A):**

$2mF_o-DF_c$ (at 0.7 rmsd) in gray
 mF_o-DF_c (at 3 rmsd) in purple (negative)
and green (positive)

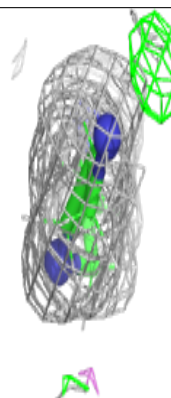
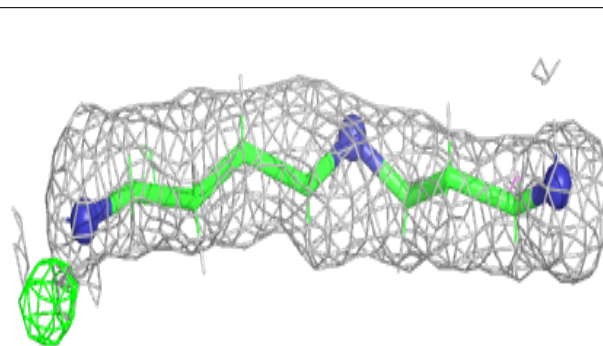
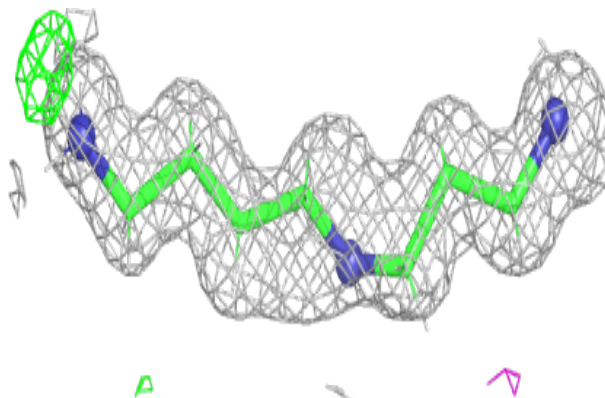


Electron density around SPD B 401 (A):

$2mF_o-DF_c$ (at 0.7 rmsd) in gray
 mF_o-DF_c (at 3 rmsd) in purple (negative)
and green (positive)

**Electron density around SPD B 401 (B):**

$2mF_o-DF_c$ (at 0.7 rmsd) in gray
 mF_o-DF_c (at 3 rmsd) in purple (negative)
and green (positive)



6.5 Other polymers

There are no such residues in this entry.