



Full wwPDB X-ray Structure Validation Report ⓘ

Mar 8, 2018 – 09:12 pm GMT

PDB ID : 2OZ5
Title : Crystal structure of Mycobacterium tuberculosis protein tyrosine phosphatase PtpB in complex with the specific inhibitor OMTS
Authors : Grundner, C.; Gee, C.L.; Alber, T.; TB Structural Genomics Consortium (TBSGC)
Deposited on : 2007-02-23
Resolution : 2.00 Å(reported)

This is a Full wwPDB X-ray Structure Validation Report for a publicly released PDB entry.

We welcome your comments at validation@mail.wwpdb.org

A user guide is available at

<https://www.wwpdb.org/validation/2017/XrayValidationReportHelp>

with specific help available everywhere you see the ⓘ symbol.

The following versions of software and data (see [references ⓘ](#)) were used in the production of this report:

MolProbity : 4.02b-467
Mogul : 1.7.3 (157068), CSD as539be (2018)
Xtriage (Phenix) : 1.13
EDS : trunk30967
Percentile statistics : 20171227.v01 (using entries in the PDB archive December 27th 2017)
Refmac : 5.8.0158
CCP4 : 7.0 (Gargrove)
Ideal geometry (proteins) : Engh & Huber (2001)
Ideal geometry (DNA, RNA) : Parkinson et al. (1996)
Validation Pipeline (wwPDB-VP) : trunk30967

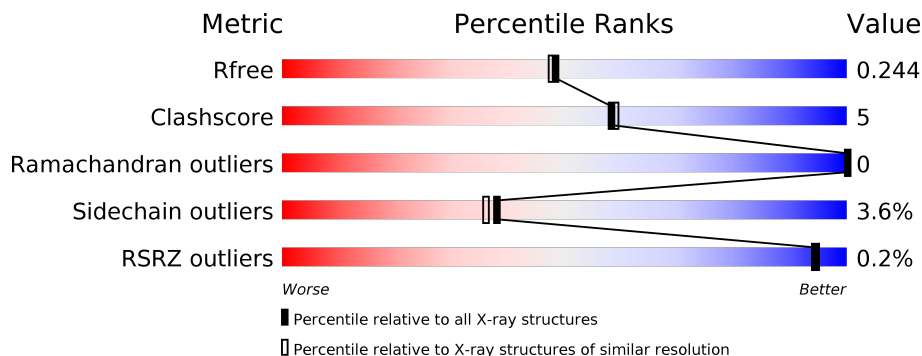
1 Overall quality at a glance

The following experimental techniques were used to determine the structure:

X-RAY DIFFRACTION

The reported resolution of this entry is 2.00 Å.

Percentile scores (ranging between 0-100) for global validation metrics of the entry are shown in the following graphic. The table shows the number of entries on which the scores are based.



Metric	Whole archive (#Entries)	Similar resolution (#Entries, resolution range(Å))
R_{free}	111664	7193 (2.00-2.00)
Clashscore	122126	8267 (2.00-2.00)
Ramachandran outliers	120053	8166 (2.00-2.00)
Sidechain outliers	120020	8165 (2.00-2.00)
RSRZ outliers	108989	7011 (2.00-2.00)

The table below summarises the geometric issues observed across the polymeric chains and their fit to the electron density. The red, orange, yellow and green segments on the lower bar indicate the fraction of residues that contain outliers for ≥ 3 , 2, 1 and 0 types of geometric quality criteria. A grey segment represents the fraction of residues that are not modelled. The numeric value for each fraction is indicated below the corresponding segment, with a dot representing fractions $\leq 5\%$. The upper red bar (where present) indicates the fraction of residues that have poor fit to the electron density. The numeric value is given above the bar.

Mol	Chain	Length	Quality of chain
1	A	296	 77% 10% • 10%
1	B	296	 76% 10% •• 12%

2 Entry composition i

There are 3 unique types of molecules in this entry. The entry contains 4550 atoms, of which 0 are hydrogens and 0 are deuteriums.

In the tables below, the ZeroOcc column contains the number of atoms modelled with zero occupancy, the AltConf column contains the number of residues with at least one atom in alternate conformation and the Trace column contains the number of residues modelled with at most 2 atoms.

- Molecule 1 is a protein called Phosphotyrosine protein phosphatase ptpb.

Mol	Chain	Residues	Atoms					ZeroOcc	AltConf	Trace
			Total	C	N	O	S			
1	A	265	Total	C	N	O	S	38	0	0
			2022	1252	383	383	4			
1	B	261	Total	C	N	O	S	39	0	0
			2012	1246	380	382	4			

There are 40 discrepancies between the modelled and reference sequences:

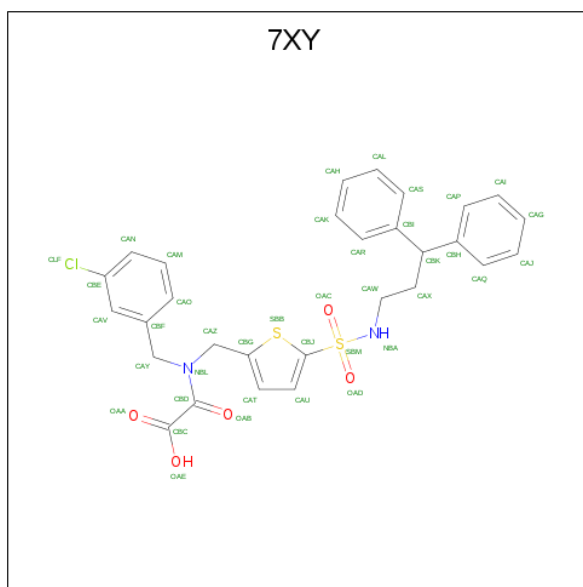
Chain	Residue	Modelled	Actual	Comment	Reference
A	-19	MET	-	CLONING ARTIFACT	UNP A1QMT0
A	-18	GLY	-	CLONING ARTIFACT	UNP A1QMT0
A	-17	SER	-	CLONING ARTIFACT	UNP A1QMT0
A	-16	SER	-	CLONING ARTIFACT	UNP A1QMT0
A	-15	HIS	-	EXPRESSION TAG	UNP A1QMT0
A	-14	HIS	-	EXPRESSION TAG	UNP A1QMT0
A	-13	HIS	-	EXPRESSION TAG	UNP A1QMT0
A	-12	HIS	-	EXPRESSION TAG	UNP A1QMT0
A	-11	HIS	-	EXPRESSION TAG	UNP A1QMT0
A	-10	HIS	-	EXPRESSION TAG	UNP A1QMT0
A	-9	SER	-	CLONING ARTIFACT	UNP A1QMT0
A	-8	SER	-	CLONING ARTIFACT	UNP A1QMT0
A	-7	GLY	-	CLONING ARTIFACT	UNP A1QMT0
A	-6	LEU	-	CLONING ARTIFACT	UNP A1QMT0
A	-5	VAL	-	CLONING ARTIFACT	UNP A1QMT0
A	-4	PRO	-	CLONING ARTIFACT	UNP A1QMT0
A	-3	ARG	-	CLONING ARTIFACT	UNP A1QMT0
A	-2	GLY	-	CLONING ARTIFACT	UNP A1QMT0
A	-1	SER	-	CLONING ARTIFACT	UNP A1QMT0
A	0	HIS	-	CLONING ARTIFACT	UNP A1QMT0
B	-19	MET	-	CLONING ARTIFACT	UNP A1QMT0
B	-18	GLY	-	CLONING ARTIFACT	UNP A1QMT0
B	-17	SER	-	CLONING ARTIFACT	UNP A1QMT0
B	-16	SER	-	CLONING ARTIFACT	UNP A1QMT0
B	-15	HIS	-	EXPRESSION TAG	UNP A1QMT0

Continued on next page...

Continued from previous page...

Chain	Residue	Modelled	Actual	Comment	Reference
B	-14	HIS	-	EXPRESSION TAG	UNP A1QMT0
B	-13	HIS	-	EXPRESSION TAG	UNP A1QMT0
B	-12	HIS	-	EXPRESSION TAG	UNP A1QMT0
B	-11	HIS	-	EXPRESSION TAG	UNP A1QMT0
B	-10	HIS	-	EXPRESSION TAG	UNP A1QMT0
B	-9	SER	-	CLONING ARTIFACT	UNP A1QMT0
B	-8	SER	-	CLONING ARTIFACT	UNP A1QMT0
B	-7	GLY	-	CLONING ARTIFACT	UNP A1QMT0
B	-6	LEU	-	CLONING ARTIFACT	UNP A1QMT0
B	-5	VAL	-	CLONING ARTIFACT	UNP A1QMT0
B	-4	PRO	-	CLONING ARTIFACT	UNP A1QMT0
B	-3	ARG	-	CLONING ARTIFACT	UNP A1QMT0
B	-2	GLY	-	CLONING ARTIFACT	UNP A1QMT0
B	-1	SER	-	CLONING ARTIFACT	UNP A1QMT0
B	0	HIS	-	CLONING ARTIFACT	UNP A1QMT0

- Molecule 2 is {(3-CHLOROBENZYL)[(5-{{(3,3-DIPHENYLPROPYL)AMINO}SULFO NYL)-2-THIENYL]METHYL]AMINO}(OXO)ACETIC ACID (three-letter code: 7XY) (formula: C₂₉H₂₇ClN₂O₅S₂).



Mol	Chain	Residues	Atoms					ZeroOcc	AltConf	
2	A	1	Total	C	Cl	N	O	S	0	0
			39	29	1	2	5	2		
2	A	1	Total	C	Cl	N	O	S	0	0
			39	29	1	2	5	2		
2	B	1	Total	C	Cl	N	O	S	0	0
			39	29	1	2	5	2		

Continued on next page...

Continued from previous page...

Mol	Chain	Residues	Atoms					ZeroOcc	AltConf	
			Total	C	Cl	N	O			S
2	B	1	39	29	1	2	5	2	0	0

- Molecule 3 is water.

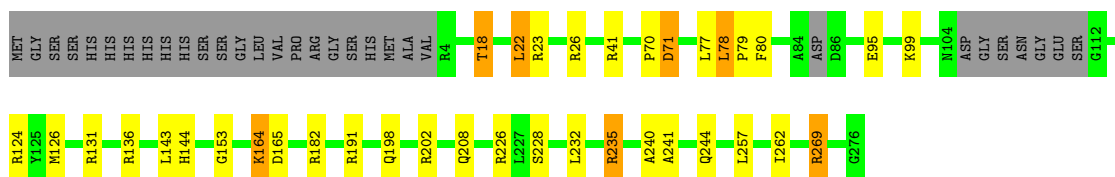
Mol	Chain	Residues	Atoms		ZeroOcc	AltConf
3	A	189	Total	O	0	0
			189	189		
3	B	171	Total	O	0	0
			171	171		

3 Residue-property plots [i](#)

These plots are drawn for all protein, RNA and DNA chains in the entry. The first graphic for a chain summarises the proportions of the various outlier classes displayed in the second graphic. The second graphic shows the sequence view annotated by issues in geometry and electron density. Residues are color-coded according to the number of geometric quality criteria for which they contain at least one outlier: green = 0, yellow = 1, orange = 2 and red = 3 or more. A red dot above a residue indicates a poor fit to the electron density ($RSRZ > 2$). Stretches of 2 or more consecutive residues without any outlier are shown as a green connector. Residues present in the sample, but not in the model, are shown in grey.

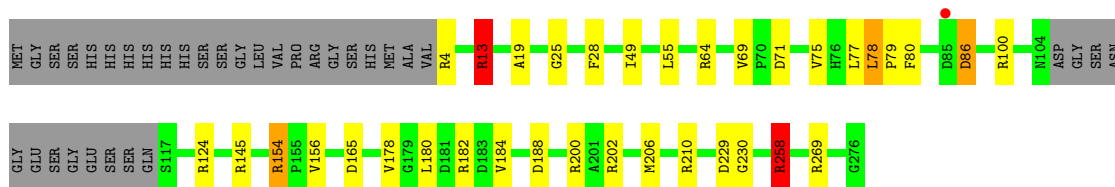
- Molecule 1: Phosphotyrosine protein phosphatase ptpb

Chain A:  77% 10% 10%



- Molecule 1: Phosphotyrosine protein phosphatase ptpb

Chain B:  76% 10% 12%



4 Data and refinement statistics i

Property	Value	Source
Space group	P 21 21 21	Depositor
Cell constants a, b, c, α , β , γ	74.40Å 72.49Å 96.06Å 90.00° 90.00° 90.00°	Depositor
Resolution (Å)	50.00 – 2.00 48.03 – 1.72	Depositor EDS
% Data completeness (in resolution range)	97.1 (50.00-2.00) 73.9 (48.03-1.72)	Depositor EDS
R_{merge}	0.03	Depositor
R_{sym}	(Not available)	Depositor
$\langle I/\sigma(I) \rangle$ ¹	1.19 (at 1.72Å)	Xtrriage
Refinement program	REFMAC 5.2.0005	Depositor
R, R_{free}	0.189 , 0.249 0.187 , 0.244	Depositor DCC
R_{free} test set	2109 reflections (5.09%)	wwPDB-VP
Wilson B-factor (Å ²)	16.4	Xtrriage
Anisotropy	0.227	Xtrriage
Bulk solvent k_{sol} (e/Å ³), B_{sol} (Å ²)	0.35 , 45.0	EDS
L-test for twinning ²	$\langle L \rangle = 0.49$, $\langle L^2 \rangle = 0.33$	Xtrriage
Estimated twinning fraction	0.015 for k,h,-l	Xtrriage
F_o, F_c correlation	0.94	EDS
Total number of atoms	4550	wwPDB-VP
Average B, all atoms (Å ²)	14.0	wwPDB-VP

Xtrriage's analysis on translational NCS is as follows: *The largest off-origin peak in the Patterson function is 4.89% of the height of the origin peak. No significant pseudotranslation is detected.*

¹Intensities estimated from amplitudes.

²Theoretical values of $\langle |L| \rangle$, $\langle L^2 \rangle$ for acentric reflections are 0.5, 0.333 respectively for untwinned datasets, and 0.375, 0.2 for perfectly twinned datasets.

5 Model quality i

5.1 Standard geometry i

Bond lengths and bond angles in the following residue types are not validated in this section: 7XY

The Z score for a bond length (or angle) is the number of standard deviations the observed value is removed from the expected value. A bond length (or angle) with $|Z| > 5$ is considered an outlier worth inspection. RMSZ is the root-mean-square of all Z scores of the bond lengths (or angles).

Mol	Chain	Bond lengths		Bond angles	
		RMSZ	# Z >5	RMSZ	# Z >5
1	A	2.40	9/2051 (0.4%)	2.12	12/2779 (0.4%)
1	B	1.80	8/2042 (0.4%)	3.29	18/2767 (0.7%)
All	All	2.12	17/4093 (0.4%)	2.76	30/5546 (0.5%)

Chiral center outliers are detected by calculating the chiral volume of a chiral center and verifying if the center is modelled as a planar moiety or with the opposite hand. A planarity outlier is detected by checking planarity of atoms in a peptide group, atoms in a mainchain group or atoms of a sidechain that are expected to be planar.

Mol	Chain	#Chirality outliers	#Planarity outliers
1	A	0	2
1	B	0	2
All	All	0	4

All (17) bond length outliers are listed below:

Mol	Chain	Res	Type	Atoms	Z	Observed(Å)	Ideal(Å)
1	A	235	ARG	CZ-NH2	64.26	2.16	1.33
1	B	124	ARG	CZ-NH2	62.81	2.14	1.33
1	A	235	ARG	CZ-NH1	56.94	2.07	1.33
1	A	269	ARG	CZ-NH2	54.50	2.04	1.33
1	B	258	ARG	CZ-NH2	28.69	1.70	1.33
1	B	124	ARG	CZ-NH1	-20.84	1.05	1.33
1	B	258	ARG	CZ-NH1	-19.80	1.07	1.33
1	A	235	ARG	NE-CZ	18.12	1.56	1.33
1	A	71	ASP	CB-CG	10.54	1.73	1.51
1	A	269	ARG	CD-NE	-9.08	1.31	1.46
1	A	124	ARG	CB-CG	-8.50	1.29	1.52
1	B	269	ARG	CD-NE	7.83	1.59	1.46
1	B	154	ARG	NE-CZ	-7.15	1.23	1.33
1	A	269	ARG	CZ-NH1	7.12	1.42	1.33

Continued on next page...

Continued from previous page...

Mol	Chain	Res	Type	Atoms	Z	Observed(Å)	Ideal(Å)
1	B	71	ASP	CA-CB	6.64	1.68	1.53
1	A	208	GLN	CA-CB	-6.27	1.40	1.53
1	B	86	ASP	CB-CG	6.05	1.64	1.51

All (30) bond angle outliers are listed below:

Mol	Chain	Res	Type	Atoms	Z	Observed(°)	Ideal(°)
1	B	258	ARG	NE-CZ-NH2	-154.92	42.84	120.30
1	A	269	ARG	NE-CZ-NH1	62.34	151.47	120.30
1	A	235	ARG	NE-CZ-NH2	-47.96	96.32	120.30
1	A	269	ARG	NE-CZ-NH2	-41.82	99.39	120.30
1	A	235	ARG	CD-NE-CZ	38.34	177.28	123.60
1	B	258	ARG	NE-CZ-NH1	34.98	137.79	120.30
1	B	258	ARG	NH1-CZ-NH2	32.61	155.27	119.40
1	A	235	ARG	NH1-CZ-NH2	31.55	154.11	119.40
1	B	124	ARG	NE-CZ-NH1	-28.27	106.17	120.30
1	A	235	ARG	NE-CZ-NH1	-22.15	109.22	120.30
1	B	154	ARG	CD-NE-CZ	14.41	143.78	123.60
1	B	154	ARG	NE-CZ-NH1	-13.20	113.70	120.30
1	B	154	ARG	NE-CZ-NH2	12.71	126.65	120.30
1	B	124	ARG	NE-CZ-NH2	10.54	125.57	120.30
1	B	86	ASP	CB-CG-OD2	10.07	127.37	118.30
1	A	269	ARG	NH1-CZ-NH2	-9.45	109.01	119.40
1	B	100	ARG	NE-CZ-NH1	9.05	124.83	120.30
1	B	269	ARG	CD-NE-CZ	-8.26	112.03	123.60
1	B	269	ARG	CG-CD-NE	-8.04	94.92	111.80
1	B	124	ARG	NH1-CZ-NH2	7.95	128.15	119.40
1	B	13	ARG	NE-CZ-NH1	-7.55	116.52	120.30
1	A	124	ARG	CA-CB-CG	7.29	129.44	113.40
1	B	86	ASP	CB-CG-OD1	-6.38	112.56	118.30
1	A	71	ASP	CA-CB-CG	-6.16	99.84	113.40
1	A	99	LYS	CD-CE-NZ	5.74	124.90	111.70
1	B	71	ASP	CB-CA-C	-5.62	99.17	110.40
1	A	78	LEU	N-CA-C	-5.23	96.87	111.00
1	A	22	LEU	CA-CB-CG	5.15	127.15	115.30
1	B	78	LEU	N-CA-C	-5.10	97.22	111.00
1	B	124	ARG	CG-CD-NE	5.03	122.35	111.80

There are no chirality outliers.

All (4) planarity outliers are listed below:

Mol	Chain	Res	Type	Group
1	A	269	ARG	Sidechain
1	A	77	LEU	Peptide
1	B	258	ARG	Sidechain
1	B	77	LEU	Peptide

5.2 Too-close contacts [i](#)

In the following table, the Non-H and H(model) columns list the number of non-hydrogen atoms and hydrogen atoms in the chain respectively. The H(added) column lists the number of hydrogen atoms added and optimized by MolProbity. The Clashes column lists the number of clashes within the asymmetric unit, whereas Symm-Clashes lists symmetry related clashes.

Mol	Chain	Non-H	H(model)	H(added)	Clashes	Symm-Clashes
1	A	2022	0	2005	20	0
1	B	2012	0	2002	22	0
2	A	78	0	52	2	0
2	B	78	0	52	1	0
3	A	189	0	0	2	0
3	B	171	0	0	2	0
All	All	4550	0	4111	42	0

The all-atom clashscore is defined as the number of clashes found per 1000 atoms (including hydrogen atoms). The all-atom clashscore for this structure is 5.

All (42) close contacts within the same asymmetric unit are listed below, sorted by their clash magnitude.

Atom-1	Atom-2	Interatomic distance (Å)	Clash overlap (Å)
1:A:136:ARG:HG2	1:A:136:ARG:HH11	1.50	0.76
1:B:13:ARG:NH1	1:B:188:ASP:OD1	2.19	0.75
1:A:240:ALA:O	1:A:244:GLN:HG3	1.87	0.75
1:B:28:PHE:CD2	1:B:49:ILE:HD11	2.24	0.73
1:A:144:HIS:HA	1:A:262:ILE:HD11	1.74	0.69
1:A:18:THR:HG23	3:A:401:HOH:O	1.94	0.67
1:B:28:PHE:CE2	1:B:49:ILE:HD11	2.30	0.66
1:B:78:LEU:N	1:B:79:PRO:CD	2.58	0.65
1:B:4:ARG:N	3:B:378:HOH:O	2.34	0.60
1:B:200:ARG:NH1	1:B:229:ASP:OD1	2.31	0.59
1:B:19:ALA:HA	1:B:184:VAL:HG21	1.85	0.57
1:A:41:ARG:HG2	1:A:70:PRO:HD3	1.88	0.56
1:A:164:LYS:HE2	1:A:165:ASP:OD2	2.08	0.54
1:B:25:GLY:HA2	1:B:28:PHE:CZ	2.46	0.51

Continued on next page...

Continued from previous page...

Atom-1	Atom-2	Interatomic distance (Å)	Clash overlap (Å)
1:B:28:PHE:CD2	1:B:49:ILE:CD1	2.91	0.51
1:A:78:LEU:N	1:A:79:PRO:CD	2.74	0.51
1:B:206:MET:O	1:B:210:ARG:HG2	2.12	0.50
1:A:228:SER:HA	1:A:232:LEU:HD11	1.94	0.50
1:A:18:THR:HG22	1:A:191:ARG:HH11	1.77	0.49
1:B:230:GLY:HA3	3:B:387:HOH:O	2.11	0.49
1:A:136:ARG:HG2	1:A:136:ARG:NH1	2.25	0.49
1:A:165:ASP:OD2	2:A:277:7XY:HAZ2	2.12	0.49
1:A:95:GLU:HG2	2:A:278:7XY:OAC	2.14	0.47
1:A:143:LEU:HD21	1:A:257:LEU:CD2	2.45	0.47
1:B:78:LEU:N	1:B:79:PRO:HD3	2.30	0.46
1:B:19:ALA:HA	1:B:184:VAL:CG2	2.47	0.45
1:A:136:ARG:HH11	1:A:136:ARG:CG	2.24	0.45
1:B:55:LEU:HA	1:B:78:LEU:O	2.17	0.45
1:A:131:ARG:HG2	1:A:241:ALA:HB1	2.00	0.44
1:B:154:ARG:O	1:B:156:VAL:HG23	2.18	0.44
1:B:165:ASP:OD2	2:B:277:7XY:HAZ2	2.17	0.44
1:A:26:ARG:NH2	1:A:153:GLY:O	2.51	0.43
1:A:78:LEU:N	1:A:79:PRO:HD3	2.34	0.43
1:A:198:GLN:O	1:A:202:ARG:HG2	2.19	0.43
1:B:64:ARG:NH2	1:B:202:ARG:HD2	2.34	0.42
1:A:126:MET:CE	3:A:385:HOH:O	2.66	0.42
1:B:13:ARG:NH1	1:B:188:ASP:O	2.52	0.42
1:B:13:ARG:HH11	1:B:13:ARG:HD2	1.65	0.41
1:B:69:VAL:HG21	1:B:75:VAL:CG2	2.51	0.41
1:B:28:PHE:CE2	1:B:49:ILE:CD1	3.02	0.40
1:B:178:VAL:HG23	1:B:180:LEU:HD13	2.03	0.40
1:A:136:ARG:NH1	1:A:136:ARG:CG	2.83	0.40

There are no symmetry-related clashes.

5.3 Torsion angles [i](#)

5.3.1 Protein backbone [i](#)

In the following table, the Percentiles column shows the percent Ramachandran outliers of the chain as a percentile score with respect to all X-ray entries followed by that with respect to entries of similar resolution.

The Analysed column shows the number of residues for which the backbone conformation was analysed, and the total number of residues.

Mol	Chain	Analysed	Favoured	Allowed	Outliers	Percentiles	
1	A	259/296 (88%)	251 (97%)	8 (3%)	0	100	100
1	B	257/296 (87%)	248 (96%)	9 (4%)	0	100	100
All	All	516/592 (87%)	499 (97%)	17 (3%)	0	100	100

There are no Ramachandran outliers to report.

5.3.2 Protein sidechains [i](#)

In the following table, the Percentiles column shows the percent sidechain outliers of the chain as a percentile score with respect to all X-ray entries followed by that with respect to entries of similar resolution.

The Analysed column shows the number of residues for which the sidechain conformation was analysed, and the total number of residues.

Mol	Chain	Analysed	Rotameric	Outliers	Percentiles	
1	A	207/238 (87%)	198 (96%)	9 (4%)	32	28
1	B	208/238 (87%)	202 (97%)	6 (3%)	45	45
All	All	415/476 (87%)	400 (96%)	15 (4%)	38	36

All (15) residues with a non-rotameric sidechain are listed below:

Mol	Chain	Res	Type
1	A	18	THR
1	A	22	LEU
1	A	23	ARG
1	A	71	ASP
1	A	80	PHE
1	A	164	LYS
1	A	182	ARG
1	A	226	ARG
1	A	235	ARG
1	B	13	ARG
1	B	80	PHE
1	B	86	ASP
1	B	145	ARG
1	B	182	ARG
1	B	258	ARG

Some sidechains can be flipped to improve hydrogen bonding and reduce clashes. There are no such sidechains identified.

5.3.3 RNA [i](#)

There are no RNA molecules in this entry.

5.4 Non-standard residues in protein, DNA, RNA chains [i](#)

There are no non-standard protein/DNA/RNA residues in this entry.

5.5 Carbohydrates [i](#)

There are no carbohydrates in this entry.

5.6 Ligand geometry [i](#)

4 ligands are modelled in this entry.

In the following table, the Counts columns list the number of bonds (or angles) for which Mogul statistics could be retrieved, the number of bonds (or angles) that are observed in the model and the number of bonds (or angles) that are defined in the Chemical Component Dictionary. The Link column lists molecule types, if any, to which the group is linked. The Z score for a bond length (or angle) is the number of standard deviations the observed value is removed from the expected value. A bond length (or angle) with $|Z| > 2$ is considered an outlier worth inspection. RMSZ is the root-mean-square of all Z scores of the bond lengths (or angles).

Mol	Type	Chain	Res	Link	Bond lengths			Bond angles		
					Counts	RMSZ	# Z > 2	Counts	RMSZ	# Z > 2
2	7XY	A	277	-	38,42,42	1.91	7 (18%)	45,58,58	1.67	5 (11%)
2	7XY	A	278	-	38,42,42	1.62	5 (13%)	45,58,58	1.63	7 (15%)
2	7XY	B	277	-	38,42,42	1.78	5 (13%)	45,58,58	1.82	7 (15%)
2	7XY	B	278	-	38,42,42	1.66	4 (10%)	45,58,58	1.43	6 (13%)

In the following table, the Chirals column lists the number of chiral outliers, the number of chiral centers analysed, the number of these observed in the model and the number defined in the Chemical Component Dictionary. Similar counts are reported in the Torsion and Rings columns. '-' means no outliers of that kind were identified.

Mol	Type	Chain	Res	Link	Chirals	Torsions	Rings
2	7XY	A	277	-	-	0/26/37/37	0/4/4/4
2	7XY	A	278	-	-	0/26/37/37	0/4/4/4
2	7XY	B	277	-	-	0/26/37/37	0/4/4/4
2	7XY	B	278	-	-	0/26/37/37	0/4/4/4

All (21) bond length outliers are listed below:

Mol	Chain	Res	Type	Atoms	Z	Observed(Å)	Ideal(Å)
2	A	277	7XY	CBJ-SBM	-5.11	1.68	1.76
2	B	278	7XY	CBJ-SBB	-3.44	1.66	1.72
2	A	278	7XY	CBJ-SBB	-3.25	1.66	1.72
2	A	277	7XY	CBG-SBB	-3.11	1.67	1.73
2	A	277	7XY	CBJ-SBB	-3.00	1.67	1.72
2	B	277	7XY	CBG-SBB	-2.73	1.68	1.73
2	B	277	7XY	CBJ-SBB	-2.52	1.67	1.72
2	A	278	7XY	CBJ-SBM	-2.29	1.73	1.76
2	B	277	7XY	CAZ-CBG	2.05	1.54	1.51
2	A	277	7XY	CAY-NBL	2.09	1.50	1.46
2	A	277	7XY	SBM-NBA	2.67	1.65	1.61
2	A	278	7XY	SBM-NBA	2.88	1.65	1.61
2	B	278	7XY	OAC-SBM	3.95	1.47	1.43
2	B	278	7XY	SBM-NBA	4.34	1.67	1.61
2	A	278	7XY	OAC-SBM	4.37	1.48	1.43
2	B	277	7XY	OAD-SBM	5.43	1.49	1.43
2	B	278	7XY	OAD-SBM	5.53	1.49	1.43
2	A	277	7XY	OAC-SBM	5.56	1.49	1.43
2	A	277	7XY	OAD-SBM	6.04	1.49	1.43
2	A	278	7XY	OAD-SBM	6.14	1.50	1.43
2	B	277	7XY	OAC-SBM	6.72	1.50	1.43

All (25) bond angle outliers are listed below:

Mol	Chain	Res	Type	Atoms	Z	Observed(°)	Ideal(°)
2	B	277	7XY	OAD-SBM-OAC	-8.61	108.74	119.56
2	A	277	7XY	OAD-SBM-OAC	-7.63	109.97	119.56
2	A	278	7XY	OAD-SBM-OAC	-7.24	110.46	119.56
2	B	278	7XY	OAD-SBM-OAC	-5.43	112.73	119.56
2	B	278	7XY	CBG-CAZ-NBL	-4.24	106.57	113.72
2	A	277	7XY	CAW-NBA-SBM	-3.91	106.96	120.34
2	B	277	7XY	CAW-NBA-SBM	-3.09	109.78	120.34
2	B	278	7XY	CAW-NBA-SBM	-3.07	109.81	120.34
2	B	277	7XY	CBF-CAY-NBL	-2.95	108.31	113.15
2	A	277	7XY	CBF-CAY-NBL	-2.81	108.53	113.15
2	A	278	7XY	CBG-CAZ-NBL	-2.58	109.37	113.72
2	A	278	7XY	CAW-NBA-SBM	-2.22	112.74	120.34
2	B	278	7XY	CAN-CBE-CAV	-2.02	118.82	121.52
2	B	277	7XY	CAO-CBF-CAV	2.06	121.46	118.53
2	A	278	7XY	CAS-CBI-CAR	2.13	120.97	118.30
2	B	278	7XY	CAO-CBF-CAV	2.16	121.61	118.53
2	A	277	7XY	OAD-SBM-NBA	2.18	110.50	107.03

Continued on next page...

Continued from previous page...

Mol	Chain	Res	Type	Atoms	Z	Observed(°)	Ideal(°)
2	A	277	7XY	CBC-CBD-NBL	2.22	120.62	117.92
2	A	278	7XY	OAC-SBM-NBA	2.23	110.58	107.03
2	B	278	7XY	OAD-SBM-NBA	2.33	110.74	107.03
2	B	277	7XY	CBC-CBD-NBL	2.48	120.93	117.92
2	A	278	7XY	CAQ-CBH-CAP	2.52	121.46	118.30
2	B	277	7XY	OAD-SBM-CBJ	2.56	111.85	107.61
2	B	277	7XY	OAC-SBM-NBA	2.86	111.59	107.03
2	A	278	7XY	OAD-SBM-NBA	3.44	112.51	107.03

There are no chirality outliers.

There are no torsion outliers.

There are no ring outliers.

3 monomers are involved in 3 short contacts:

Mol	Chain	Res	Type	Clashes	Symm-Clashes
2	A	277	7XY	1	0
2	A	278	7XY	1	0
2	B	277	7XY	1	0

5.7 Other polymers [i](#)

There are no such residues in this entry.

5.8 Polymer linkage issues [i](#)

There are no chain breaks in this entry.

6 Fit of model and data [i](#)

6.1 Protein, DNA and RNA chains [i](#)

In the following table, the column labelled ‘#RSRZ > 2’ contains the number (and percentage) of RSRZ outliers, followed by percent RSRZ outliers for the chain as percentile scores relative to all X-ray entries and entries of similar resolution. The OWAB column contains the minimum, median, 95th percentile and maximum values of the occupancy-weighted average B-factor per residue. The column labelled ‘Q < 0.9’ lists the number of (and percentage) of residues with an average occupancy less than 0.9.

Mol	Chain	Analysed	<RSRZ>	#RSRZ>2	OWAB(Å ²)	Q<0.9
1	A	265/296 (89%)	-0.73	0 100 100	5, 13, 24, 31	10 (3%)
1	B	261/296 (88%)	-0.65	1 (0%) 92 92	5, 14, 23, 29	10 (3%)
All	All	526/592 (88%)	-0.69	1 (0%) 94 94	5, 14, 24, 31	20 (3%)

All (1) RSRZ outliers are listed below:

Mol	Chain	Res	Type	RSRZ
1	B	85	ASP	2.2

6.2 Non-standard residues in protein, DNA, RNA chains [i](#)

There are no non-standard protein/DNA/RNA residues in this entry.

6.3 Carbohydrates [i](#)

There are no carbohydrates in this entry.

6.4 Ligands [i](#)

In the following table, the Atoms column lists the number of modelled atoms in the group and the number defined in the chemical component dictionary. The B-factors column lists the minimum, median, 95th percentile and maximum values of B factors of atoms in the group. The column labelled ‘Q < 0.9’ lists the number of atoms with occupancy less than 0.9.

Mol	Type	Chain	Res	Atoms	RSCC	RSR	B-factors(Å ²)	Q<0.9
2	7XY	B	278	39/39	0.98	0.07	9,12,13,15	0
2	7XY	B	277	39/39	0.98	0.07	5,8,12,13	0
2	7XY	A	277	39/39	0.98	0.07	5,11,16,16	0
2	7XY	A	278	39/39	0.98	0.07	9,12,21,23	0

6.5 Other polymers [i](#)

There are no such residues in this entry.