



wwPDB X-ray Structure Validation Summary Report ⓘ

Jul 4, 2022 – 05:12 pm BST

PDB ID : 7P19
Title : Crystal structure of SARS-CoV-2 RBD Q498Y complexed with human ACE2
Authors : Erausquin, E.; Lopez-Sagaseta, J.
Deposited on : 2021-07-01
Resolution : 3.24 Å(reported)

This is a wwPDB X-ray Structure Validation Summary Report for a publicly released PDB entry.

We welcome your comments at validation@mail.wwpdb.org

A user guide is available at

<https://www.wwpdb.org/validation/2017/XrayValidationReportHelp>

with specific help available everywhere you see the ⓘ symbol.

The types of validation reports are described at <http://www.wwpdb.org/validation/2017/FAQs#types>.

The following versions of software and data (see [references ⓘ](#)) were used in the production of this report:

MolProbity : 4.02b-467
Mogul : 1.8.4, CSD as541be (2020)
Xtriage (Phenix) : 1.13
EDS : 2.29
Percentile statistics : 20191225.v01 (using entries in the PDB archive December 25th 2019)
Refmac : 5.8.0267
CCP4 : 7.1.010 (Gargrove)
Ideal geometry (proteins) : Engh & Huber (2001)
Ideal geometry (DNA, RNA) : Parkinson et al. (1996)
Validation Pipeline (wwPDB-VP) : 2.29

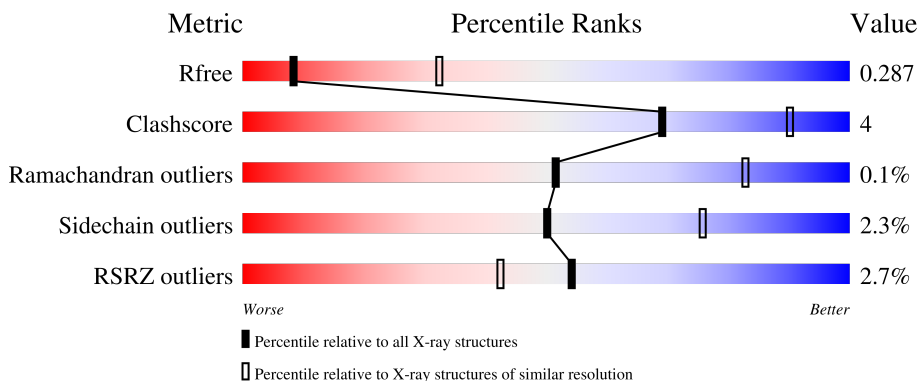
1 Overall quality at a glance

The following experimental techniques were used to determine the structure:

X-RAY DIFFRACTION

The reported resolution of this entry is 3.24 Å.

Percentile scores (ranging between 0-100) for global validation metrics of the entry are shown in the following graphic. The table shows the number of entries on which the scores are based.



Metric	Whole archive (#Entries)	Similar resolution (#Entries, resolution range(Å))
R_{free}	130704	1619 (3.28-3.20)
Clashscore	141614	1755 (3.28-3.20)
Ramachandran outliers	138981	1728 (3.28-3.20)
Sidechain outliers	138945	1727 (3.28-3.20)
RSRZ outliers	127900	1567 (3.28-3.20)

The table below summarises the geometric issues observed across the polymeric chains and their fit to the electron density. The red, orange, yellow and green segments of the lower bar indicate the fraction of residues that contain outliers for ≥ 3 , 2, 1 and 0 types of geometric quality criteria respectively. A grey segment represents the fraction of residues that are not modelled. The numeric value for each fraction is indicated below the corresponding segment, with a dot representing fractions $\leq 5\%$. The upper red bar (where present) indicates the fraction of residues that have poor fit to the electron density. The numeric value is given above the bar.

Mol	Chain	Length	Quality of chain
1	A	599	 2% 88% 11%
1	B	599	 3% 86% 13% ..
2	C	210	 6% 79% 8% 13%
2	E	210	 % 75% 9% 16%

The following table lists non-polymeric compounds, carbohydrate monomers and non-standard

residues in protein, DNA, RNA chains that are outliers for geometric or electron-density-fit criteria:

Mol	Type	Chain	Res	Chirality	Geometry	Clashes	Electron density
6	CL	E	602	-	-	X	X

2 Entry composition

There are 6 unique types of molecules in this entry. The entry contains 12614 atoms, of which 0 are hydrogens and 0 are deuteriums.

In the tables below, the ZeroOcc column contains the number of atoms modelled with zero occupancy, the AltConf column contains the number of residues with at least one atom in alternate conformation and the Trace column contains the number of residues modelled with at most 2 atoms.

- Molecule 1 is a protein called Processed angiotensin-converting enzyme 2.

Mol	Chain	Residues	Atoms					ZeroOcc	AltConf	Trace
			Total	C	N	O	S			
1	A	597	Total	C	N	O	S	0	2	0
			4810	3087	797	897	29			
1	B	594	Total	C	N	O	S	0	1	0
			4849	3104	804	912	29			

There are 4 discrepancies between the modelled and reference sequences:

Chain	Residue	Modelled	Actual	Comment	Reference
A	17	GLY	-	expression tag	UNP Q9BYF1
A	18	PRO	-	expression tag	UNP Q9BYF1
B	17	GLY	-	expression tag	UNP Q9BYF1
B	18	PRO	-	expression tag	UNP Q9BYF1

- Molecule 2 is a protein called Spike protein S1.

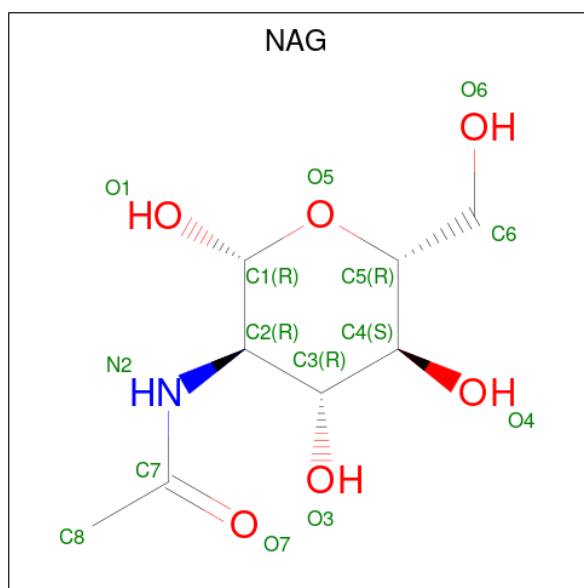
Mol	Chain	Residues	Atoms					ZeroOcc	AltConf	Trace
			Total	C	N	O	S			
2	E	176	Total	C	N	O	S	0	0	0
			1395	894	234	262	5			
2	C	182	Total	C	N	O	S	0	0	0
			1451	933	240	271	7			

There are 6 discrepancies between the modelled and reference sequences:

Chain	Residue	Modelled	Actual	Comment	Reference
E	332	GLY	-	expression tag	UNP P0DTC2
E	333	PRO	-	expression tag	UNP P0DTC2
E	498	TYR	GLN	engineered mutation	UNP P0DTC2
C	332	GLY	-	expression tag	UNP P0DTC2
C	333	PRO	-	expression tag	UNP P0DTC2
C	498	TYR	GLN	engineered mutation	UNP P0DTC2

- Molecule 3 is 2-acetamido-2-deoxy-beta-D-glucopyranose (three-letter code: NAG) (formula:

C₈H₁₅NO₆).



Mol	Chain	Residues	Atoms				ZeroOcc	AltConf
3	A	1	Total	C	N	O	0	0
			14	8	1	5		
3	A	1	Total	C	N	O	0	0
			14	8	1	5		
3	E	1	Total	C	N	O	0	0
			14	8	1	5		
3	B	1	Total	C	N	O	0	0
			14	8	1	5		
3	B	1	Total	C	N	O	0	0
			14	8	1	5		
3	B	1	Total	C	N	O	0	0
			14	8	1	5		
3	C	1	Total	C	N	O	0	0
			14	8	1	5		

- Molecule 4 is ZINC ION (three-letter code: ZN) (formula: Zn).

Mol	Chain	Residues	Atoms		ZeroOcc	AltConf
4	A	1	Total	Zn	0	0
			1	1		
4	B	1	Total	Zn	0	0
			1	1		

- Molecule 5 is 1,2-ETHANEDIOL (three-letter code: EDO) (formula: C₂H₆O₂).



Mol	Chain	Residues	Atoms	ZeroOcc	AltConf
5	A	1	Total C O 4 2 2	0	0
5	B	1	Total C O 4 2 2	0	0

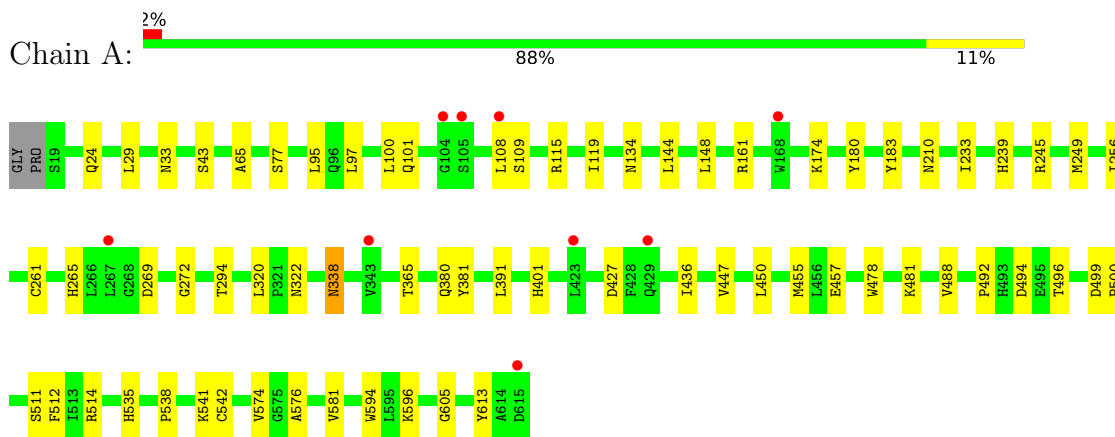
- Molecule 6 is CHLORIDE ION (three-letter code: CL) (formula: Cl).

Mol	Chain	Residues	Atoms	ZeroOcc	AltConf
6	E	1	Total Cl 1 1	0	0

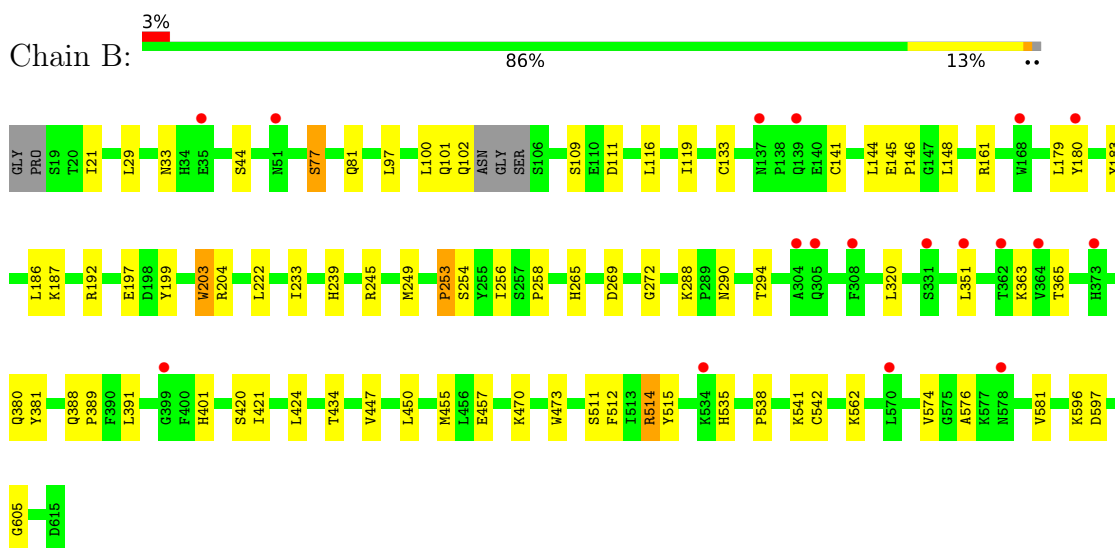
3 Residue-property plots [i](#)

These plots are drawn for all protein, RNA, DNA and oligosaccharide chains in the entry. The first graphic for a chain summarises the proportions of the various outlier classes displayed in the second graphic. The second graphic shows the sequence view annotated by issues in geometry and electron density. Residues are color-coded according to the number of geometric quality criteria for which they contain at least one outlier: green = 0, yellow = 1, orange = 2 and red = 3 or more. A red dot above a residue indicates a poor fit to the electron density ($RSRZ > 2$). Stretches of 2 or more consecutive residues without any outlier are shown as a green connector. Residues present in the sample, but not in the model, are shown in grey.

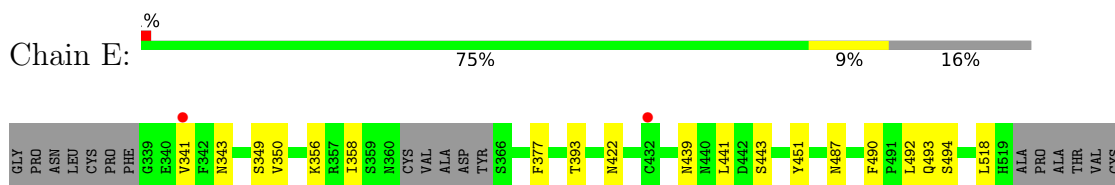
- Molecule 1: Processed angiotensin-converting enzyme 2



- Molecule 1: Processed angiotensin-converting enzyme 2

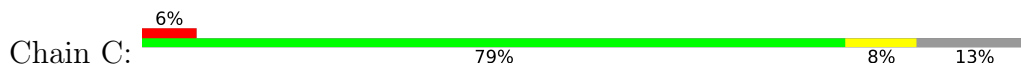


- Molecule 2: Spike protein S1



GLY
PRO
PRO
LYS
LYS
LEU
SER
THR
ASN
ASN
LEU
VAL
LYS
LYS
ASN
ASN
LYS
CYS
VAL
ASN
PHE

● Molecule 2: Spike protein S1



GLY
PRO
ASN
LEU
CYS
P337
V341
F342
F347
V350
K356
S359
N360
C361
Y362
A363
D364
Y365
L368
F377
V382
L387
N388
C391
V395
S399
F400
N422
W436
W437
S438
D442
L455
I472
R509
F515
GLU
LEU
LEU
HIS
ALA

PRO
ALA
THR
W524
C525
G526
PRO
LYS
LYS
SER
THR
THR
ASN
LEU
VAL
LYS
ASN
ASN
LYS
CYS
VAL
ASN
PHE

4 Data and refinement statistics

Property	Value	Source
Space group	P 21 21 21	Depositor
Cell constants a, b, c, α , β , γ	60.59Å 165.04Å 228.68Å 90.00° 90.00° 90.00°	Depositor
Resolution (Å)	93.99 – 3.24 133.83 – 3.24	Depositor EDS
% Data completeness (in resolution range)	99.4 (93.99-3.24) 99.5 (133.83-3.24)	Depositor EDS
R_{merge}	0.26	Depositor
R_{sym}	(Not available)	Depositor
$\langle I/\sigma(I) \rangle$ ¹	1.51 (at 3.26Å)	Xtrriage
Refinement program	PHENIX 1.19.2_4158	Depositor
R, R_{free}	0.231 , 0.288 0.230 , 0.287	Depositor DCC
R_{free} test set	1853 reflections (4.95%)	wwPDB-VP
Wilson B-factor (Å ²)	85.1	Xtrriage
Anisotropy	0.729	Xtrriage
Bulk solvent k_{sol} (e/Å ³), B_{sol} (Å ²)	(Not available) , (Not available)	EDS
L-test for twinning ²	$\langle L \rangle = 0.47$, $\langle L^2 \rangle = 0.30$	Xtrriage
Estimated twinning fraction	No twinning to report.	Xtrriage
F_o, F_c correlation	0.92	EDS
Total number of atoms	12614	wwPDB-VP
Average B, all atoms (Å ²)	97.0	wwPDB-VP

Xtrriage's analysis on translational NCS is as follows: *The largest off-origin peak in the Patterson function is 3.24% of the height of the origin peak. No significant pseudotranslation is detected.*

¹Intensities estimated from amplitudes.

²Theoretical values of $\langle |L| \rangle$, $\langle L^2 \rangle$ for acentric reflections are 0.5, 0.333 respectively for untwinned datasets, and 0.375, 0.2 for perfectly twinned datasets.

5 Model quality [i](#)

5.1 Standard geometry [i](#)

Bond lengths and bond angles in the following residue types are not validated in this section: CL, EDO, ZN, NAG

The Z score for a bond length (or angle) is the number of standard deviations the observed value is removed from the expected value. A bond length (or angle) with $|Z| > 5$ is considered an outlier worth inspection. RMSZ is the root-mean-square of all Z scores of the bond lengths (or angles).

Mol	Chain	Bond lengths		Bond angles	
		RMSZ	# Z >5	RMSZ	# Z >5
1	A	0.24	0/4949	0.42	0/6731
1	B	0.24	0/4988	0.43	0/6776
2	C	0.25	0/1492	0.47	0/2026
2	E	0.25	0/1432	0.50	0/1945
All	All	0.24	0/12861	0.44	0/17478

There are no bond length outliers.

There are no bond angle outliers.

There are no chirality outliers.

There are no planarity outliers.

5.2 Too-close contacts [i](#)

In the following table, the Non-H and H(model) columns list the number of non-hydrogen atoms and hydrogen atoms in the chain respectively. The H(added) column lists the number of hydrogen atoms added and optimized by MolProbity. The Clashes column lists the number of clashes within the asymmetric unit, whereas Symm-Clashes lists symmetry-related clashes.

Mol	Chain	Non-H	H(model)	H(added)	Clashes	Symm-Clashes
1	A	4810	0	4547	35	0
1	B	4849	0	4626	38	0
2	C	1451	0	1368	8	0
2	E	1395	0	1314	11	0
3	A	28	0	26	0	0
3	B	42	0	39	1	0
3	C	14	0	13	0	0
3	E	14	0	13	1	0
4	A	1	0	0	0	0

Continued on next page...

Continued from previous page...

Mol	Chain	Non-H	H(model)	H(added)	Clashes	Symm-Clashes
4	B	1	0	0	0	0
5	A	4	0	6	0	0
5	B	4	0	6	0	0
6	E	1	0	0	2	0
All	All	12614	0	11958	91	0

The all-atom clashscore is defined as the number of clashes found per 1000 atoms (including hydrogen atoms). The all-atom clashscore for this structure is 4.

The worst 5 of 91 close contacts within the same asymmetric unit are listed below, sorted by their clash magnitude.

Atom-1	Atom-2	Interatomic distance (Å)	Clash overlap (Å)
1:B:81:GLN:HG3	1:B:101:GLN:HB2	1.79	0.65
2:E:451:TYR:HB3	6:E:602:CL:CL	2.34	0.65
1:B:192:ARG:NH1	1:B:197:GLU:O	2.31	0.64
2:E:341:VAL:HG21	2:E:358:ILE:HD11	1.79	0.62
1:B:269:ASP:OD1	1:B:272:GLY:N	2.33	0.61

There are no symmetry-related clashes.

5.3 Torsion angles [i](#)

5.3.1 Protein backbone [i](#)

In the following table, the Percentiles column shows the percent Ramachandran outliers of the chain as a percentile score with respect to all X-ray entries followed by that with respect to entries of similar resolution.

The Analysed column shows the number of residues for which the backbone conformation was analysed, and the total number of residues.

Mol	Chain	Analysed	Favoured	Allowed	Outliers	Percentiles
1	A	597/599 (100%)	577 (97%)	20 (3%)	0	100 100
1	B	591/599 (99%)	571 (97%)	19 (3%)	1 (0%)	47 78
2	C	178/210 (85%)	168 (94%)	10 (6%)	0	100 100
2	E	172/210 (82%)	163 (95%)	9 (5%)	0	100 100
All	All	1538/1618 (95%)	1479 (96%)	58 (4%)	1 (0%)	51 83

All (1) Ramachandran outliers are listed below:

Mol	Chain	Res	Type
1	B	253	PRO

5.3.2 Protein sidechains [i](#)

In the following table, the Percentiles column shows the percent sidechain outliers of the chain as a percentile score with respect to all X-ray entries followed by that with respect to entries of similar resolution.

The Analysed column shows the number of residues for which the sidechain conformation was analysed, and the total number of residues.

Mol	Chain	Analysed	Rotameric	Outliers	Percentiles
1	A	506/528 (96%)	497 (98%)	9 (2%)	59 80
1	B	524/528 (99%)	508 (97%)	16 (3%)	40 70
2	C	157/182 (86%)	154 (98%)	3 (2%)	57 79
2	E	149/182 (82%)	147 (99%)	2 (1%)	69 85
All	All	1336/1420 (94%)	1306 (98%)	30 (2%)	50 76

5 of 30 residues with a non-rotameric sidechain are listed below:

Mol	Chain	Res	Type
1	B	111	ASP
2	C	361	CYS
1	B	290	ASN
2	C	388	ASN
1	B	514	ARG

Sometimes sidechains can be flipped to improve hydrogen bonding and reduce clashes. All (2) such sidechains are listed below:

Mol	Chain	Res	Type
1	B	194	ASN
1	B	210	ASN

5.3.3 RNA [i](#)

There are no RNA molecules in this entry.

5.4 Non-standard residues in protein, DNA, RNA chains [i](#)

There are no non-standard protein/DNA/RNA residues in this entry.

5.5 Carbohydrates [i](#)

There are no monosaccharides in this entry.

5.6 Ligand geometry [i](#)

Of 12 ligands modelled in this entry, 3 are monoatomic - leaving 9 for Mogul analysis.

In the following table, the Counts columns list the number of bonds (or angles) for which Mogul statistics could be retrieved, the number of bonds (or angles) that are observed in the model and the number of bonds (or angles) that are defined in the Chemical Component Dictionary. The Link column lists molecule types, if any, to which the group is linked. The Z score for a bond length (or angle) is the number of standard deviations the observed value is removed from the expected value. A bond length (or angle) with $|Z| > 2$ is considered an outlier worth inspection. RMSZ is the root-mean-square of all Z scores of the bond lengths (or angles).

Mol	Type	Chain	Res	Link	Bond lengths			Bond angles		
					Counts	RMSZ	# Z > 2	Counts	RMSZ	# Z > 2
3	NAG	C	601	-	14,14,15	0.18	0	17,19,21	0.56	0
3	NAG	A	703	-	14,14,15	0.18	0	17,19,21	0.47	0
3	NAG	B	701	-	14,14,15	0.22	0	17,19,21	0.41	0
5	EDO	A	704	-	3,3,3	0.46	0	2,2,2	0.35	0
3	NAG	E	601	-	14,14,15	0.16	0	17,19,21	0.57	0
3	NAG	B	703	-	14,14,15	0.16	0	17,19,21	0.48	0
3	NAG	B	705	-	14,14,15	0.21	0	17,19,21	0.39	0
3	NAG	A	701	1	14,14,15	0.23	0	17,19,21	0.42	0
5	EDO	B	704	-	3,3,3	0.46	0	2,2,2	0.32	0

In the following table, the Chirals column lists the number of chiral outliers, the number of chiral centers analysed, the number of these observed in the model and the number defined in the Chemical Component Dictionary. Similar counts are reported in the Torsion and Rings columns. '-' means no outliers of that kind were identified.

Mol	Type	Chain	Res	Link	Chirals	Torsions	Rings
3	NAG	C	601	-	-	4/6/23/26	0/1/1/1
3	NAG	A	703	-	-	0/6/23/26	0/1/1/1
3	NAG	B	701	-	-	1/6/23/26	0/1/1/1
5	EDO	A	704	-	-	1/1/1/1	-
3	NAG	E	601	-	-	1/6/23/26	0/1/1/1
3	NAG	B	703	-	-	0/6/23/26	0/1/1/1
3	NAG	B	705	-	-	0/6/23/26	0/1/1/1
3	NAG	A	701	1	-	3/6/23/26	0/1/1/1
5	EDO	B	704	-	-	0/1/1/1	-

There are no bond length outliers.

There are no bond angle outliers.

There are no chirality outliers.

5 of 10 torsion outliers are listed below:

Mol	Chain	Res	Type	Atoms
3	A	701	NAG	C8-C7-N2-C2
3	A	701	NAG	O7-C7-N2-C2
3	C	601	NAG	C8-C7-N2-C2
3	C	601	NAG	O7-C7-N2-C2
3	C	601	NAG	C4-C5-C6-O6

There are no ring outliers.

2 monomers are involved in 2 short contacts:

Mol	Chain	Res	Type	Clashes	Symm-Clashes
3	E	601	NAG	1	0
3	B	703	NAG	1	0

5.7 Other polymers [i](#)

There are no such residues in this entry.

5.8 Polymer linkage issues [i](#)

There are no chain breaks in this entry.

6 Fit of model and data [i](#)

6.1 Protein, DNA and RNA chains [i](#)

In the following table, the column labelled ‘#RSRZ > 2’ contains the number (and percentage) of RSRZ outliers, followed by percent RSRZ outliers for the chain as percentile scores relative to all X-ray entries and entries of similar resolution. The OWAB column contains the minimum, median, 95th percentile and maximum values of the occupancy-weighted average B-factor per residue. The column labelled ‘Q < 0.9’ lists the number of (and percentage) of residues with an average occupancy less than 0.9.

Mol	Chain	Analysed	<RSRZ>	#RSRZ>2	OWAB(Å ²)	Q<0.9
1	A	597/599 (99%)	0.28	9 (1%) 73 64	61, 84, 116, 199	0
1	B	594/599 (99%)	0.31	18 (3%) 50 39	67, 97, 145, 216	0
2	C	182/210 (86%)	0.55	13 (7%) 16 11	82, 109, 182, 207	0
2	E	176/210 (83%)	0.24	2 (1%) 80 73	65, 89, 133, 189	0
All	All	1549/1618 (95%)	0.32	42 (2%) 54 42	61, 93, 146, 216	0

The worst 5 of 42 RSRZ outliers are listed below:

Mol	Chain	Res	Type	RSRZ
2	C	364	ASP	6.5
1	A	615	ASP	5.0
2	C	515	PHE	4.0
2	C	365	TYR	3.9
1	B	570	LEU	3.8

6.2 Non-standard residues in protein, DNA, RNA chains [i](#)

There are no non-standard protein/DNA/RNA residues in this entry.

6.3 Carbohydrates [i](#)

There are no monosaccharides in this entry.

6.4 Ligands [i](#)

In the following table, the Atoms column lists the number of modelled atoms in the group and the number defined in the chemical component dictionary. The B-factors column lists the minimum, median, 95th percentile and maximum values of B factors of atoms in the group. The column labelled ‘Q < 0.9’ lists the number of atoms with occupancy less than 0.9.

Mol	Type	Chain	Res	Atoms	RSCC	RSR	B-factors(\AA^2)	Q<0.9
3	NAG	A	703	14/15	0.57	0.32	102,117,125,128	0
6	CL	E	602	1/1	0.57	0.87	97,97,97,97	0
3	NAG	B	705	14/15	0.62	0.22	139,159,171,173	0
3	NAG	B	703	14/15	0.62	0.28	141,165,178,180	0
3	NAG	E	601	14/15	0.77	0.19	150,160,165,167	0
3	NAG	C	601	14/15	0.80	0.19	136,141,147,150	0
4	ZN	B	702	1/1	0.84	0.23	100,100,100,100	0
3	NAG	A	701	14/15	0.86	0.20	96,99,105,108	0
3	NAG	B	701	14/15	0.87	0.19	98,103,111,120	0
5	EDO	A	704	4/4	0.89	0.25	60,63,70,71	0
5	EDO	B	704	4/4	0.90	0.17	68,76,77,82	0
4	ZN	A	702	1/1	0.96	0.26	91,91,91,91	0

6.5 Other polymers [\(i\)](#)

There are no such residues in this entry.