



Full wwPDB EM Validation Report ⓘ

Nov 20, 2021 – 05:09 am GMT

PDB ID : 7P1H
EMDB ID : EMD-13159
Title : Structure of the *V. vulnificus* ExoY-G-actin-profilin complex
Authors : Belyy, A.; Merino, F.; Raunser, S.
Deposited on : 2021-07-01
Resolution : 3.90 Å (reported)
Based on initial model : 6NBW

This is a Full wwPDB EM Validation Report for a publicly released PDB entry.

We welcome your comments at validation@mail.wwpdb.org

A user guide is available at

<https://www.wwpdb.org/validation/2017/EMValidationReportHelp>

with specific help available everywhere you see the ⓘ symbol.

The following versions of software and data (see [references ⓘ](#)) were used in the production of this report:

EMDB validation analysis : 0.0.0.dev97
Mogul : 1.8.4 (270009), CSD as541be (2020)
MolProbity : 4.02b-467
Percentile statistics : 20191225.v01 (using entries in the PDB archive December 25th 2019)
Ideal geometry (proteins) : Engh & Huber (2001)
Ideal geometry (DNA, RNA) : Parkinson et al. (1996)
Validation Pipeline (wwPDB-VP) : 2.23.2

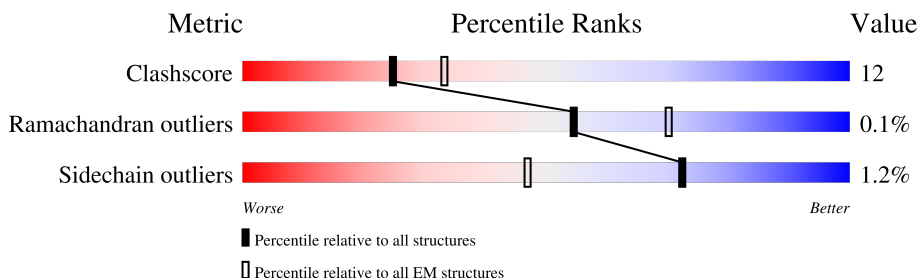
1 Overall quality at a glance

The following experimental techniques were used to determine the structure:

ELECTRON MICROSCOPY

The reported resolution of this entry is 3.90 Å.

Percentile scores (ranging between 0-100) for global validation metrics of the entry are shown in the following graphic. The table shows the number of entries on which the scores are based.



Metric	Whole archive (#Entries)	EM structures (#Entries)
Clashscore	158937	4297
Ramachandran outliers	154571	4023
Sidechain outliers	154315	3826

The table below summarises the geometric issues observed across the polymeric chains and their fit to the map. The red, orange, yellow and green segments of the bar indicate the fraction of residues that contain outliers for ≥ 3 , 2, 1 and 0 types of geometric quality criteria respectively. A grey segment represents the fraction of residues that are not modelled. The numeric value for each fraction is indicated below the corresponding segment, with a dot representing fractions $\leq 5\%$. The upper red bar (where present) indicates the fraction of residues that have poor fit to the EM map (all-atom inclusion $< 40\%$). The numeric value is given above the bar.

Mol	Chain	Length	Quality of chain
1	A	827	 11% (red), 33% (green), 14% (yellow), 52% (grey)
2	B	372	 20% (red), 72% (green), 27% (yellow), 1% (grey)
3	P	140	 76% (green), 23% (yellow), 1% (grey)

2 Entry composition

There are 5 unique types of molecules in this entry. The entry contains 13976 atoms, of which 6936 are hydrogens and 0 are deuteriums.

In the tables below, the AltConf column contains the number of residues with at least one atom in alternate conformation and the Trace column contains the number of residues modelled with at most 2 atoms.

- Molecule 1 is a protein called Maltose/maltodextrin-binding periplasmic protein, RTX-toxin.

Mol	Chain	Residues	Atoms					AltConf	Trace	
			Total	C	H	N	O			S
1	A	395	6173	1981	3060	507	617	8	0	0

There are 32 discrepancies between the modelled and reference sequences:

Chain	Residue	Modelled	Actual	Comment	Reference
A	-397	MET	-	initiating methionine	UNP P0AEX9
A	-396	GLY	-	expression tag	UNP P0AEX9
A	-395	SER	-	expression tag	UNP P0AEX9
A	-394	SER	-	expression tag	UNP P0AEX9
A	-393	HIS	-	expression tag	UNP P0AEX9
A	-392	HIS	-	expression tag	UNP P0AEX9
A	-391	HIS	-	expression tag	UNP P0AEX9
A	-390	HIS	-	expression tag	UNP P0AEX9
A	-389	HIS	-	expression tag	UNP P0AEX9
A	-388	HIS	-	expression tag	UNP P0AEX9
A	-387	SER	-	expression tag	UNP P0AEX9
A	-386	SER	-	expression tag	UNP P0AEX9
A	-385	GLY	-	expression tag	UNP P0AEX9
A	-384	LEU	-	expression tag	UNP P0AEX9
A	-383	VAL	-	expression tag	UNP P0AEX9
A	-382	PRO	-	expression tag	UNP P0AEX9
A	-381	ARG	-	expression tag	UNP P0AEX9
A	-380	GLY	-	expression tag	UNP P0AEX9
A	-379	SER	-	expression tag	UNP P0AEX9
A	-378	HIS	-	expression tag	UNP P0AEX9
A	-377	MET	-	expression tag	UNP P0AEX9
A	-65	VAL	ALA	conflict	UNP P0AEX9
A	-10	ASN	-	linker	UNP P0AEX9
A	-9	SER	-	linker	UNP P0AEX9
A	-8	GLY	-	linker	UNP P0AEX9
A	-7	SER	-	linker	UNP P0AEX9
A	-6	SER	-	linker	UNP P0AEX9

Continued on next page...

Continued from previous page...

Chain	Residue	Modelled	Actual	Comment	Reference
A	-5	GLY	-	linker	UNP P0AEX9
A	-4	SER	-	linker	UNP P0AEX9
A	-3	SER	-	linker	UNP P0AEX9
A	-2	VAL	-	linker	UNP P0AEX9
A	-1	GLU	-	linker	UNP P0AEX9

- Molecule 2 is a protein called Actin, cytoplasmic 1.

Mol	Chain	Residues	Atoms					AltConf	Trace	
			Total	C	H	N	O			S
2	B	365	5679	1809	2825	480	546	19	0	0

There is a discrepancy between the modelled and reference sequences:

Chain	Residue	Modelled	Actual	Comment	Reference
B	272	ALA	CYS	engineered mutation	UNP P60709

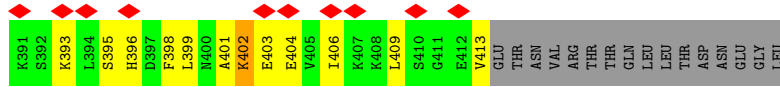
- Molecule 3 is a protein called Profilin-1.

Mol	Chain	Residues	Atoms					AltConf	Trace	
			Total	C	H	N	O			S
3	P	138	2082	654	1041	179	201	7	0	0

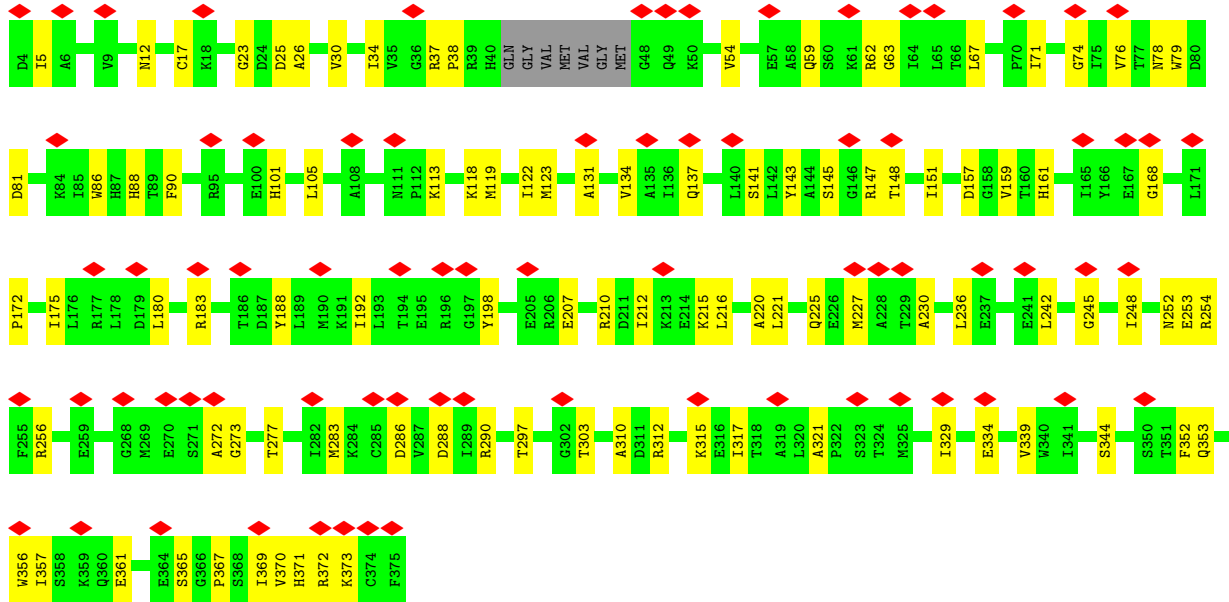
- Molecule 4 is CALCIUM ION (three-letter code: CA) (formula: Ca).

Mol	Chain	Residues	Atoms		AltConf
4	B	1	Total	Ca	0
			1	1	

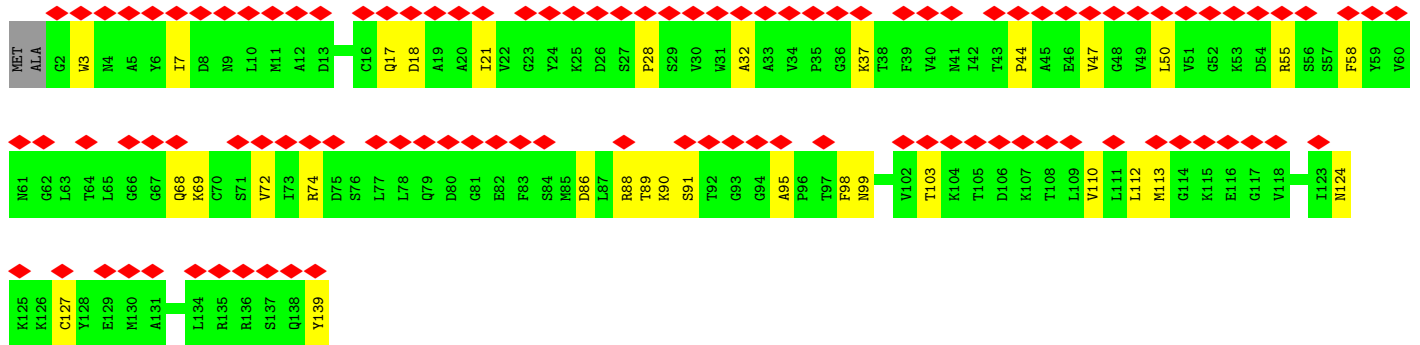
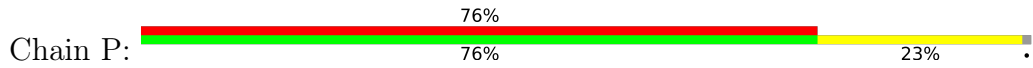
- Molecule 5 is ADENOSINE-5'-TRIPHOSPHATE (three-letter code: ATP) (formula: C₁₀H₁₆N₅O₁₃P₃).



• Molecule 2: Actin, cytoplasmic 1



• Molecule 3: Profilin-1



4 Experimental information

Property	Value	Source
EM reconstruction method	SINGLE PARTICLE	Depositor
Imposed symmetry	POINT, C1	Depositor
Number of particles used	342081	Depositor
Resolution determination method	FSC 0.143 CUT-OFF	Depositor
CTF correction method	PHASE FLIPPING AND AMPLITUDE CORRECTION	Depositor
Microscope	FEI TITAN KRIOS	Depositor
Voltage (kV)	300	Depositor
Electron dose ($e^-/\text{\AA}^2$)	60	Depositor
Minimum defocus (nm)	1200	Depositor
Maximum defocus (nm)	2500	Depositor
Magnification	Not provided	
Image detector	GATAN K3 (6k x 4k)	Depositor
Maximum map value	0.011	Depositor
Minimum map value	-0.004	Depositor
Average map value	0.000	Depositor
Map value standard deviation	0.000	Depositor
Recommended contour level	0.0025	Depositor
Map size (\AA)	217.6, 217.6, 217.6	wwPDB
Map dimensions	320, 320, 320	wwPDB
Map angles ($^\circ$)	90.0, 90.0, 90.0	wwPDB
Pixel spacing (\AA)	0.68, 0.68, 0.68	Depositor

5 Model quality [i](#)

5.1 Standard geometry [i](#)

Bond lengths and bond angles in the following residue types are not validated in this section: ATP, CA, HIC

The Z score for a bond length (or angle) is the number of standard deviations the observed value is removed from the expected value. A bond length (or angle) with $|Z| > 5$ is considered an outlier worth inspection. RMSZ is the root-mean-square of all Z scores of the bond lengths (or angles).

Mol	Chain	Bond lengths		Bond angles	
		RMSZ	# Z >5	RMSZ	# Z >5
1	A	0.32	0/3178	0.57	0/4304
2	B	0.31	0/2903	0.53	0/3929
3	P	0.30	0/1059	0.55	0/1430
All	All	0.31	0/7140	0.55	0/9663

There are no bond length outliers.

There are no bond angle outliers.

There are no chirality outliers.

There are no planarity outliers.

5.2 Too-close contacts [i](#)

In the following table, the Non-H and H(model) columns list the number of non-hydrogen atoms and hydrogen atoms in the chain respectively. The H(added) column lists the number of hydrogen atoms added and optimized by MolProbity. The Clashes column lists the number of clashes within the asymmetric unit, whereas Symm-Clashes lists symmetry-related clashes.

Mol	Chain	Non-H	H(model)	H(added)	Clashes	Symm-Clashes
1	A	3113	3060	3060	85	0
2	B	2854	2825	2821	65	0
3	P	1041	1041	1040	24	0
4	B	1	0	0	0	0
5	B	31	10	12	0	0
All	All	7040	6936	6933	164	0

The all-atom clashscore is defined as the number of clashes found per 1000 atoms (including hydrogen atoms). The all-atom clashscore for this structure is 12.

All (164) close contacts within the same asymmetric unit are listed below, sorted by their clash

magnitude.

Atom-1	Atom-2	Interatomic distance (Å)	Clash overlap (Å)
2:B:286:ASP:OD2	3:P:90:LYS:NZ	2.02	0.92
1:A:409:LEU:O	1:A:413:VAL:N	2.06	0.88
2:B:220:ALA:O	2:B:312:ARG:NH1	2.08	0.87
1:A:176:LYS:NZ	1:A:183:ASP:OD1	2.08	0.87
1:A:386:PRO:O	1:A:393:LYS:NZ	2.09	0.86
2:B:273:GLY:O	2:B:277:THR:HG23	1.82	0.80
2:B:12:ASN:O	2:B:137:GLN:NE2	2.15	0.79
1:A:399:LEU:O	1:A:402:LYS:HG3	1.92	0.70
1:A:355:ASP:OD2	1:A:357:GLN:NE2	2.26	0.69
3:P:88:ARG:NH1	3:P:99:ASN:OD1	2.27	0.67
1:A:76:LYS:N	1:A:211:THR:O	2.28	0.66
1:A:223:TYR:OH	2:B:26:ALA:HB2	1.96	0.66
1:A:290:LEU:O	1:A:292:ARG:NH1	2.28	0.66
1:A:268:ASP:O	1:A:272:LEU:N	2.29	0.65
2:B:221:LEU:O	2:B:315:LYS:NZ	2.25	0.65
2:B:310:ALA:HA	2:B:329:ILE:HG21	1.80	0.63
2:B:141:SER:OG	2:B:339:VAL:HG22	1.99	0.62
2:B:288:ASP:OD2	3:P:69:LYS:NZ	2.24	0.62
3:P:68:GLN:NE2	3:P:90:LYS:O	2.33	0.61
2:B:131:ALA:HA	2:B:357:ILE:O	2.00	0.61
3:P:89:THR:OG1	3:P:98:PHE:N	2.31	0.61
1:A:364:GLN:O	1:A:368:ASN:ND2	2.34	0.60
2:B:78:ASN:ND2	2:B:81:ASP:OD2	2.34	0.59
3:P:7:ILE:HD11	3:P:21:ILE:HG13	1.84	0.59
1:A:90:MET:SD	1:A:90:MET:N	2.76	0.59
1:A:164:THR:HG22	1:A:166:GLY:O	2.02	0.59
2:B:23:GLY:N	2:B:344:SER:OG	2.36	0.59
1:A:62:GLU:O	1:A:65:LYS:HB3	2.03	0.58
3:P:3:TRP:HB2	3:P:32:ALA:HB2	1.86	0.58
2:B:361:GLU:OE1	2:B:373:LYS:NZ	2.37	0.58
2:B:236:LEU:O	2:B:254:ARG:NH1	2.38	0.56
1:A:268:ASP:O	1:A:272:LEU:HB2	2.06	0.56
1:A:150:LEU:HB2	1:A:159:TYR:HB3	1.89	0.54
3:P:69:LYS:O	3:P:90:LYS:N	2.36	0.54
2:B:62:ARG:HG3	2:B:67:LEU:HD11	1.89	0.54
2:B:172:PRO:HA	2:B:175:ILE:HD12	1.89	0.53
1:A:216:LEU:HB2	1:A:303:ALA:HB1	1.88	0.53
2:B:372:ARG:HB3	3:P:124:ASN:OD1	2.08	0.53
1:A:141:VAL:HG23	1:A:142:SER:N	2.24	0.53
1:A:249:GLU:OE1	2:B:59:GLN:NE2	2.42	0.53
1:A:131:TYR:O	1:A:136:ARG:NH2	2.43	0.51

Continued on next page...

Continued from previous page...

Atom-1	Atom-2	Interatomic distance (Å)	Clash overlap (Å)
3:P:74:ARG:NE	3:P:86:ASP:OD2	2.43	0.51
2:B:157:ASP:OD2	2:B:183:ARG:NH1	2.41	0.51
2:B:131:ALA:HB1	2:B:356:TRP:HB3	1.92	0.51
1:A:398:PHE:O	1:A:401:ALA:HB3	2.11	0.50
2:B:17:CYS:O	2:B:30:VAL:HG13	2.11	0.50
1:A:137:ILE:HD12	1:A:137:ILE:N	2.26	0.50
1:A:194:LYS:NZ	1:A:195:LEU:O	2.31	0.50
1:A:342:TYR:HD2	1:A:345:VAL:HG21	1.77	0.49
1:A:211:THR:HG22	1:A:212:ALA:N	2.27	0.49
1:A:270:ALA:HB1	1:A:300:HIS:CE1	2.47	0.49
1:A:32:ILE:O	1:A:36:MET:N	2.39	0.49
2:B:159:VAL:HG11	2:B:161:HIS:CE1	2.48	0.49
1:A:25:PRO:O	1:A:29:PRO:CD	2.61	0.49
1:A:403:GLU:HA	1:A:406:ILE:HG22	1.93	0.49
1:A:230:ASP:O	1:A:276:SER:OG	2.31	0.49
1:A:226:LEU:C	1:A:226:LEU:HD23	2.32	0.49
1:A:235:PRO:HA	1:A:272:LEU:HD11	1.95	0.49
1:A:25:PRO:HA	1:A:344:ASN:OD1	2.13	0.48
2:B:283:MET:O	2:B:290:ARG:NH2	2.46	0.48
2:B:172:PRO:HA	2:B:175:ILE:CD1	2.43	0.48
1:A:396:HIS:CD2	1:A:398:PHE:HB2	2.48	0.48
1:A:254:TYR:HA	1:A:257:LEU:HG	1.94	0.48
1:A:214:TYR:CE2	1:A:298:MET:SD	3.07	0.48
2:B:253:GLU:HA	2:B:256:ARG:HB2	1.96	0.48
2:B:367:PRO:O	2:B:370:VAL:HG12	2.14	0.47
2:B:352:PHE:HE2	2:B:356:TRP:CZ3	2.32	0.47
2:B:317:ILE:O	2:B:321:ALA:N	2.43	0.47
1:A:106:ARG:NH2	1:A:109:LEU:HB2	2.30	0.47
2:B:365:SER:HB2	2:B:369:ILE:HG21	1.97	0.47
3:P:88:ARG:HG3	3:P:89:THR:N	2.30	0.47
2:B:59:GLN:HE22	2:B:62:ARG:HE	1.61	0.47
1:A:268:ASP:HA	1:A:271:SER:OG	2.15	0.46
1:A:342:TYR:CD2	1:A:345:VAL:HG21	2.50	0.46
1:A:351:VAL:HG12	1:A:352:VAL:N	2.30	0.46
1:A:29:PRO:HA	1:A:352:VAL:HG21	1.96	0.46
1:A:133:ASN:O	1:A:136:ARG:N	2.46	0.46
2:B:371:HIS:O	3:P:74:ARG:NH1	2.45	0.46
2:B:353:GLN:HA	2:B:356:TRP:CD1	2.50	0.46
2:B:198:TYR:CD1	2:B:248:ILE:HG22	2.50	0.46
2:B:303:THR:O	2:B:303:THR:HG22	2.16	0.46
1:A:131:TYR:HA	1:A:185:TRP:O	2.15	0.46

Continued on next page...

Continued from previous page...

Atom-1	Atom-2	Interatomic distance (Å)	Clash overlap (Å)
1:A:254:TYR:CD1	1:A:254:TYR:N	2.83	0.46
1:A:348:GLN:O	1:A:348:GLN:HG3	2.16	0.45
3:P:89:THR:HG1	3:P:98:PHE:HD2	1.65	0.45
1:A:246:THR:HG21	2:B:63:GLY:HA3	1.97	0.45
1:A:233:LYS:HD3	1:A:274:VAL:HG12	1.99	0.45
1:A:399:LEU:O	1:A:403:GLU:HG2	2.17	0.45
1:A:401:ALA:HA	1:A:404:GLU:HG2	1.98	0.45
1:A:87:TRP:CG	1:A:165:ASN:HA	2.52	0.45
1:A:27:VAL:O	1:A:30:GLU:HB2	2.17	0.45
1:A:233:LYS:HB3	1:A:274:VAL:HG12	1.99	0.45
1:A:395:SER:HA	2:B:25:ASP:OD1	2.17	0.45
2:B:34:ILE:HD12	2:B:67:LEU:HD23	1.99	0.45
3:P:47:VAL:HA	3:P:50:LEU:HD12	1.99	0.45
3:P:18:ASP:HB3	3:P:113:MET:HB3	1.98	0.45
1:A:75:SER:HA	1:A:211:THR:O	2.17	0.44
2:B:113:LYS:HG2	2:B:371:HIS:CE1	2.51	0.44
2:B:79:TRP:HZ3	2:B:119:MET:SD	2.41	0.44
2:B:242:LEU:O	2:B:245:GLY:N	2.43	0.44
1:A:85:SER:HB2	1:A:95:PRO:HD3	2.00	0.44
2:B:180:LEU:C	2:B:180:LEU:HD23	2.37	0.44
2:B:212:ILE:HG23	2:B:216:LEU:HD12	2.00	0.44
1:A:217:LEU:HD21	1:A:359:PHE:CE1	2.53	0.44
1:A:76:LYS:O	1:A:213:ASP:HB3	2.18	0.43
1:A:399:LEU:HA	1:A:402:LYS:HG3	2.01	0.43
1:A:332:LEU:HD22	1:A:339:ILE:HG23	2.01	0.43
2:B:5:ILE:HD11	2:B:101:HIS:ND1	2.32	0.43
2:B:86:TRP:CZ3	2:B:122:ILE:HG21	2.52	0.43
2:B:37:ARG:HB3	2:B:38:PRO:HD2	2.00	0.43
2:B:105:LEU:HD11	2:B:123:MET:HG3	1.99	0.43
1:A:63:LYS:HE2	1:A:89:PRO:HA	2.00	0.43
1:A:216:LEU:CB	1:A:303:ALA:HB1	2.49	0.43
1:A:308:PRO:O	1:A:378:LYS:HG2	2.19	0.43
1:A:106:ARG:NE	1:A:110:ASP:OD1	2.51	0.43
1:A:130:LEU:O	1:A:186:GLN:HA	2.19	0.43
2:B:79:TRP:CG	2:B:118:LYS:HD3	2.54	0.43
2:B:59:GLN:NE2	2:B:62:ARG:HE	2.17	0.43
1:A:255:LYS:HA	1:A:258:TYR:CD2	2.53	0.43
3:P:55:ARG:HA	3:P:58:PHE:HE1	1.83	0.43
2:B:272:ALA:HB3	2:B:277:THR:HG22	2.02	0.42
2:B:148:THR:O	2:B:168:GLY:N	2.51	0.42
1:A:132:LEU:O	1:A:185:TRP:N	2.37	0.42

Continued on next page...

Continued from previous page...

Atom-1	Atom-2	Interatomic distance (Å)	Clash overlap (Å)
1:A:223:TYR:CB	2:B:334:GLU:HB2	2.49	0.42
2:B:71:ILE:HG12	2:B:76:VAL:HA	2.00	0.42
2:B:151:ILE:HG23	2:B:297:THR:HA	2.01	0.42
3:P:58:PHE:CE2	3:P:72:VAL:HG21	2.53	0.42
3:P:112:LEU:HD12	3:P:127:CYS:HB2	2.00	0.42
1:A:158:MET:SD	1:A:188:HIS:ND1	2.93	0.42
1:A:352:VAL:CG1	1:A:353:ILE:N	2.82	0.42
2:B:54:VAL:HG21	2:B:88:HIS:HB2	2.01	0.42
3:P:17:GLN:O	3:P:37:LYS:HE2	2.20	0.42
1:A:327:PHE:HD1	1:A:342:TYR:OH	2.03	0.42
2:B:230:ALA:CB	2:B:252:ASN:HB3	2.50	0.42
1:A:61:ASP:O	1:A:64:SER:N	2.50	0.42
2:B:105:LEU:O	2:B:134:VAL:HA	2.20	0.42
1:A:137:ILE:O	1:A:141:VAL:HG22	2.20	0.41
2:B:188:TYR:CZ	2:B:192:ILE:HG21	2.55	0.41
2:B:207:GLU:OE1	2:B:210:ARG:NH2	2.49	0.41
1:A:41:GLN:HA	1:A:321:PHE:CE2	2.55	0.41
1:A:403:GLU:O	1:A:406:ILE:HG22	2.20	0.41
2:B:86:TRP:HB3	2:B:90:PHE:CE2	2.56	0.41
2:B:145:SER:O	2:B:147:ARG:NH1	2.50	0.41
2:B:227:MET:SD	2:B:256:ARG:HD2	2.60	0.41
3:P:50:LEU:O	3:P:55:ARG:NH2	2.51	0.41
2:B:334:GLU:N	2:B:334:GLU:OE1	2.54	0.41
3:P:3:TRP:HH2	3:P:139:TYR:CD2	2.39	0.41
1:A:41:GLN:HA	1:A:321:PHE:CZ	2.56	0.41
1:A:297:GLU:OE1	1:A:299:VAL:N	2.54	0.41
1:A:324:LYS:O	1:A:327:PHE:CE2	2.73	0.41
1:A:352:VAL:HG12	1:A:353:ILE:N	2.36	0.41
1:A:409:LEU:O	1:A:413:VAL:HG23	2.21	0.41
1:A:380:ASN:OD1	1:A:385:ASP:O	2.39	0.40
2:B:113:LYS:HE2	2:B:371:HIS:CD2	2.56	0.40
3:P:91:SER:HB2	3:P:95:ALA:HB3	2.02	0.40
1:A:340:GLN:NE2	1:A:341:THR:HG23	2.36	0.40
1:A:87:TRP:N	1:A:91:SER:HB2	2.37	0.40
1:A:218:THR:HG23	1:A:379:TRP:HH2	1.86	0.40
1:A:223:TYR:CZ	2:B:26:ALA:HB2	2.56	0.40
1:A:230:ASP:HB3	1:A:278:ARG:HB2	2.03	0.40
2:B:215:LYS:HD3	2:B:216:LEU:CD2	2.50	0.40
3:P:28:PRO:O	3:P:44:PRO:HG3	2.22	0.40
1:A:346:ASN:ND2	1:A:347:GLU:H	2.19	0.40
3:P:103:THR:OG1	3:P:110:VAL:HB	2.22	0.40

There are no symmetry-related clashes.

5.3 Torsion angles [i](#)

5.3.1 Protein backbone [i](#)

In the following table, the Percentiles column shows the percent Ramachandran outliers of the chain as a percentile score with respect to all PDB entries followed by that with respect to all EM entries.

The Analysed column shows the number of residues for which the backbone conformation was analysed, and the total number of residues.

Mol	Chain	Analysed	Favoured	Allowed	Outliers	Percentiles	
1	A	393/827 (48%)	363 (92%)	30 (8%)	0	100	100
2	B	360/372 (97%)	343 (95%)	16 (4%)	1 (0%)	41	75
3	P	136/140 (97%)	131 (96%)	5 (4%)	0	100	100
All	All	889/1339 (66%)	837 (94%)	51 (6%)	1 (0%)	54	84

All (1) Ramachandran outliers are listed below:

Mol	Chain	Res	Type
2	B	74	GLY

5.3.2 Protein sidechains [i](#)

In the following table, the Percentiles column shows the percent sidechain outliers of the chain as a percentile score with respect to all PDB entries followed by that with respect to all EM entries.

The Analysed column shows the number of residues for which the sidechain conformation was analysed, and the total number of residues.

Mol	Chain	Analysed	Rotameric	Outliers	Percentiles	
1	A	345/696 (50%)	338 (98%)	7 (2%)	55	74
2	B	308/313 (98%)	306 (99%)	2 (1%)	86	91
3	P	113/114 (99%)	113 (100%)	0	100	100
All	All	766/1123 (68%)	757 (99%)	9 (1%)	72	83

All (9) residues with a non-rotameric sidechain are listed below:

Mol	Chain	Res	Type
1	A	41	GLN
1	A	71	LYS
1	A	144	TYR
1	A	247	TYR
1	A	283	LYS
1	A	304	ASP
1	A	402	LYS
2	B	143	TYR
2	B	225	GLN

Sometimes sidechains can be flipped to improve hydrogen bonding and reduce clashes. All (4) such sidechains are listed below:

Mol	Chain	Res	Type
1	A	340	GLN
1	A	396	HIS
2	B	59	GLN
2	B	173	HIS

5.3.3 RNA [i](#)

There are no RNA molecules in this entry.

5.4 Non-standard residues in protein, DNA, RNA chains [i](#)

1 non-standard protein/DNA/RNA residue is modelled in this entry.

There are no bond length outliers.

There are no bond angle outliers.

There are no chirality outliers.

There are no torsion outliers.

There are no ring outliers.

No monomer is involved in short contacts.

5.5 Carbohydrates [i](#)

There are no monosaccharides in this entry.

5.6 Ligand geometry

Of 2 ligands modelled in this entry, 1 is monoatomic - leaving 1 for Mogul analysis.

There are no bond length outliers.

There are no bond angle outliers.

There are no chirality outliers.

There are no torsion outliers.

There are no ring outliers.

No monomer is involved in short contacts.

5.7 Other polymers

There are no such residues in this entry.

5.8 Polymer linkage issues

There are no chain breaks in this entry.

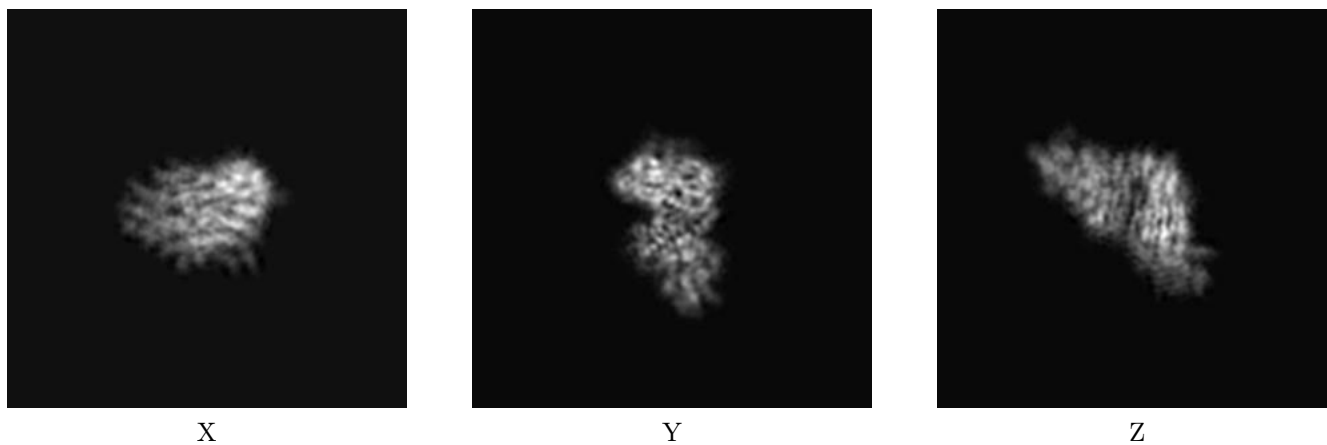
6 Map visualisation [i](#)

This section contains visualisations of the EMDB entry EMD-13159. These allow visual inspection of the internal detail of the map and identification of artifacts.

No raw map or half-maps were deposited for this entry and therefore no images, graphs, etc. pertaining to the raw map can be shown.

6.1 Orthogonal projections [i](#)

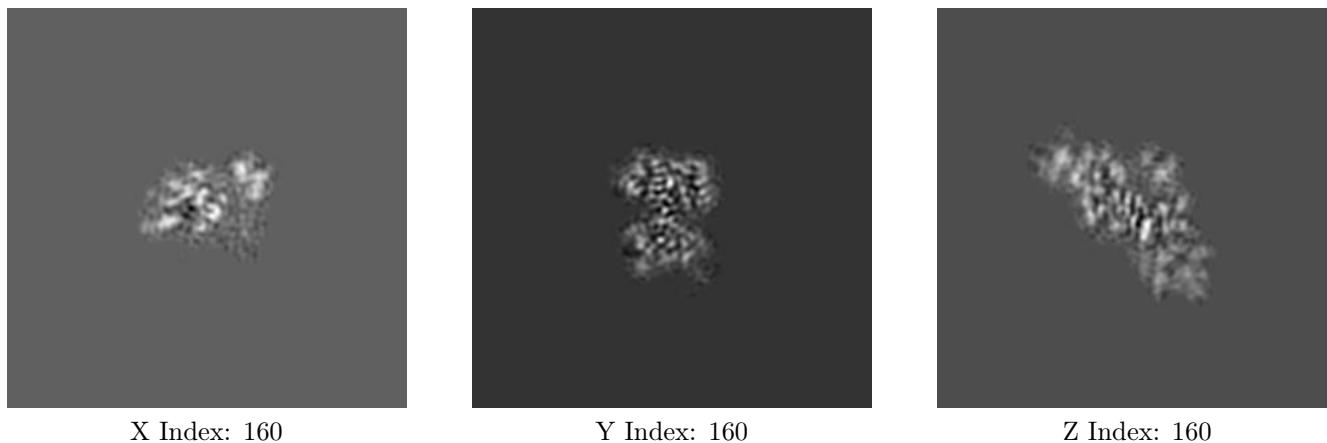
6.1.1 Primary map



The images above show the map projected in three orthogonal directions.

6.2 Central slices [i](#)

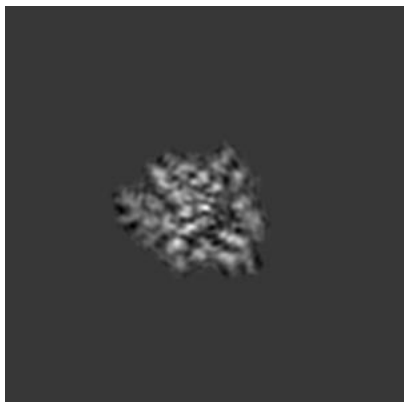
6.2.1 Primary map



The images above show central slices of the map in three orthogonal directions.

6.3 Largest variance slices [i](#)

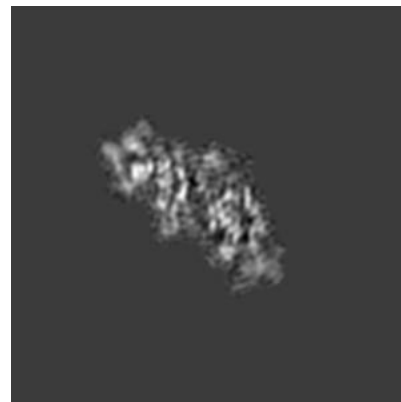
6.3.1 Primary map



X Index: 181



Y Index: 185

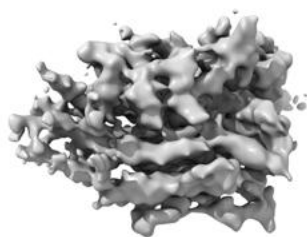


Z Index: 171

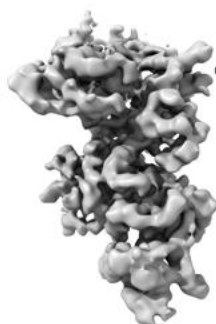
The images above show the largest variance slices of the map in three orthogonal directions.

6.4 Orthogonal surface views [i](#)

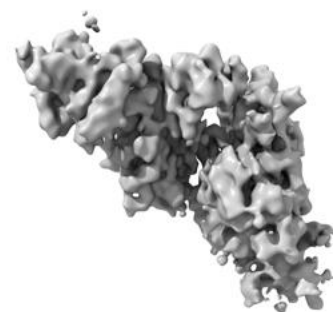
6.4.1 Primary map



X



Y



Z

The images above show the 3D surface view of the map at the recommended contour level 0.0025. These images, in conjunction with the slice images, may facilitate assessment of whether an appropriate contour level has been provided.

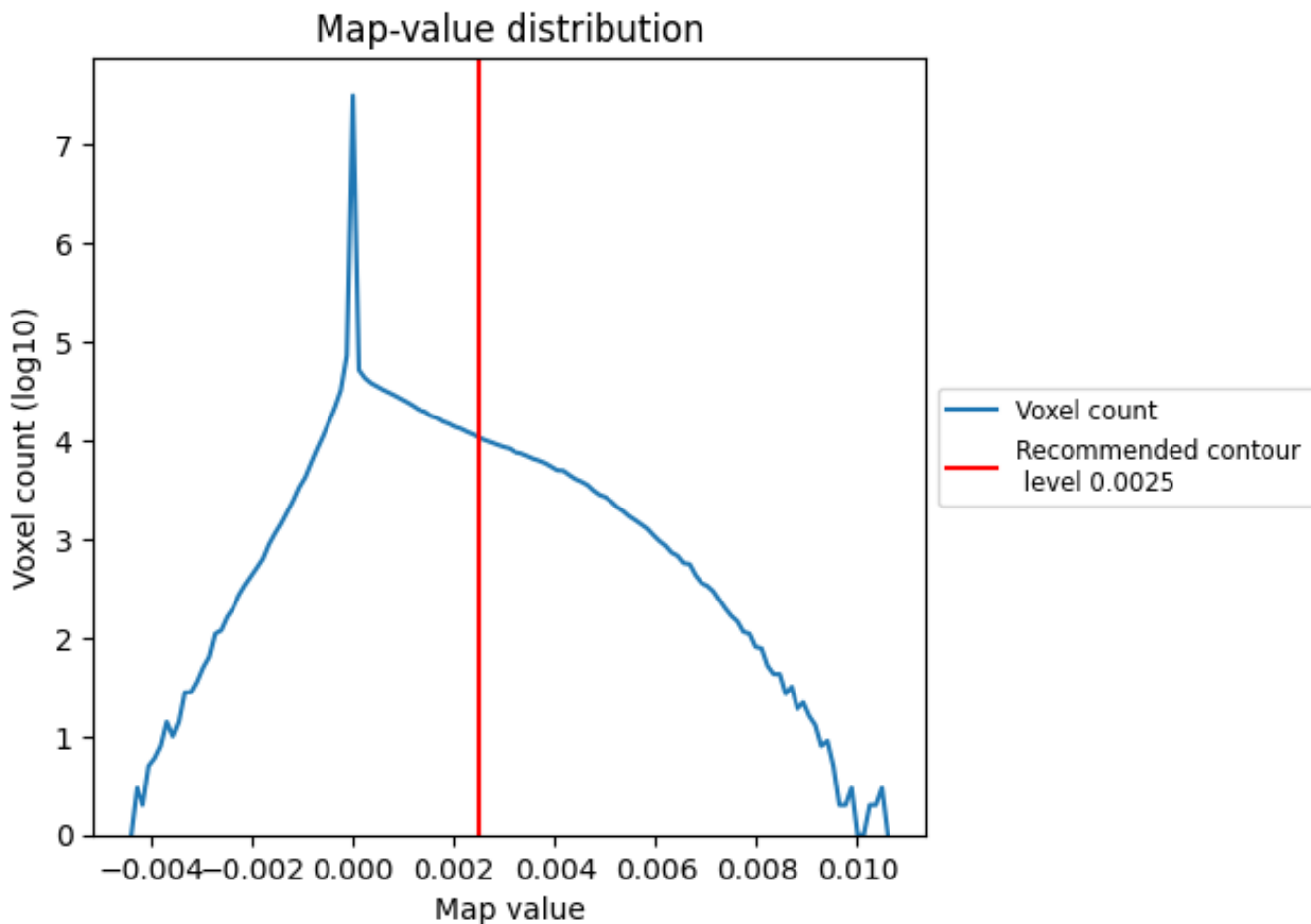
6.5 Mask visualisation

This section was not generated. No masks/segmentation were deposited.

7 Map analysis [i](#)

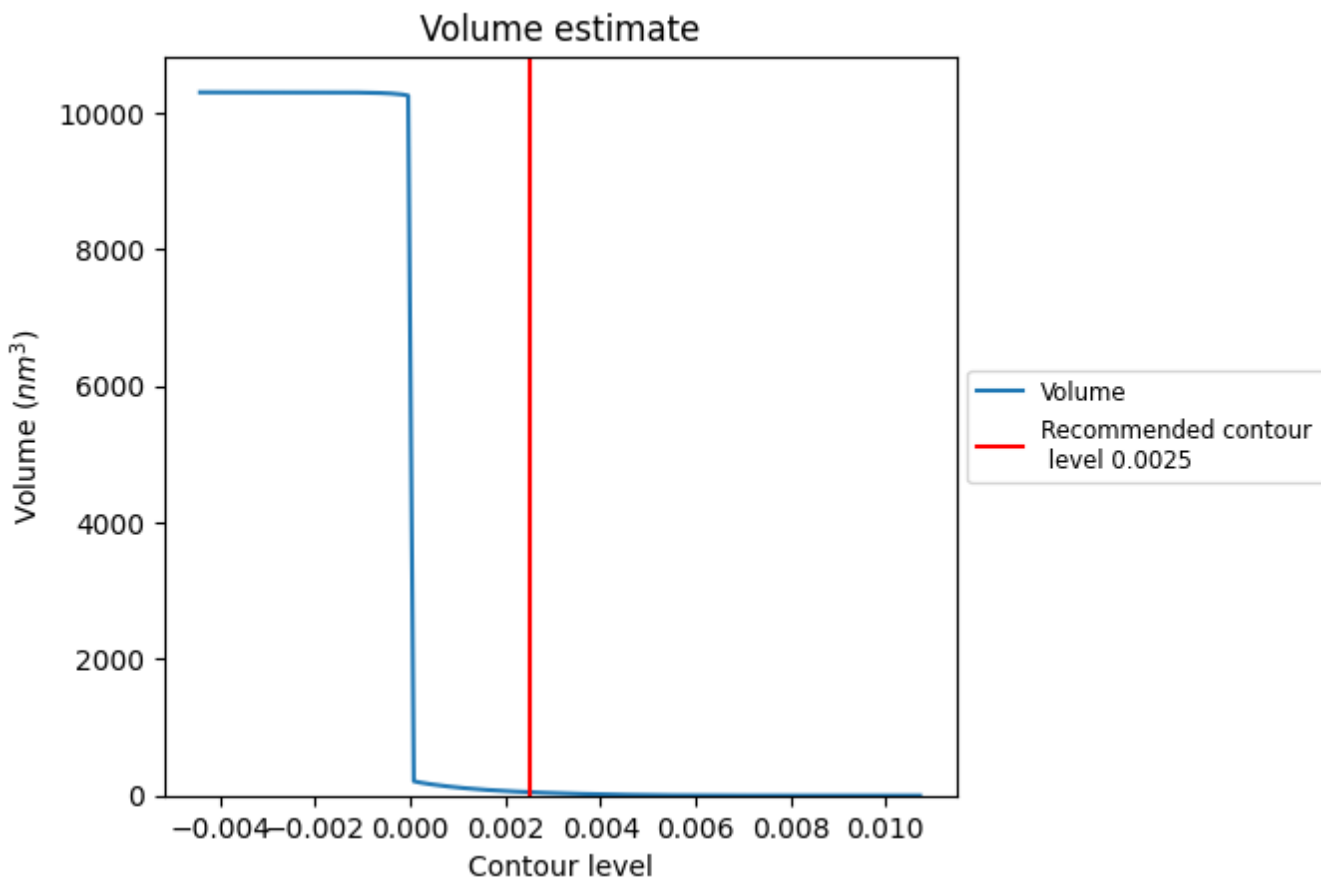
This section contains the results of statistical analysis of the map.

7.1 Map-value distribution [i](#)



The map-value distribution is plotted in 128 intervals along the x-axis. The y-axis is logarithmic. A spike in this graph at zero usually indicates that the volume has been masked.

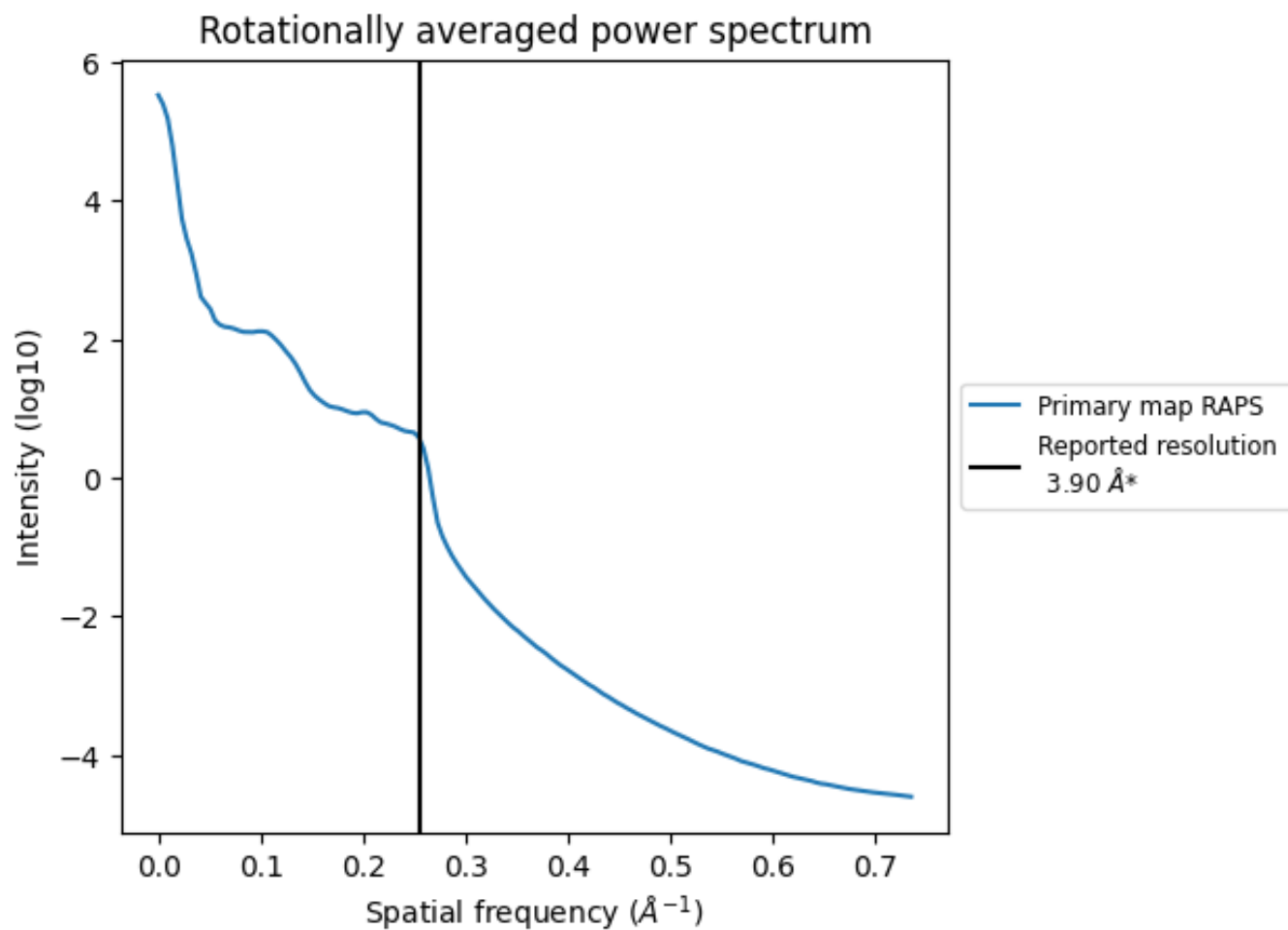
7.2 Volume estimate [\(i\)](#)



The volume at the recommended contour level is 50 nm³; this corresponds to an approximate mass of 45 kDa.

The volume estimate graph shows how the enclosed volume varies with the contour level. The recommended contour level is shown as a vertical line and the intersection between the line and the curve gives the volume of the enclosed surface at the given level.

7.3 Rotationally averaged power spectrum [i](#)

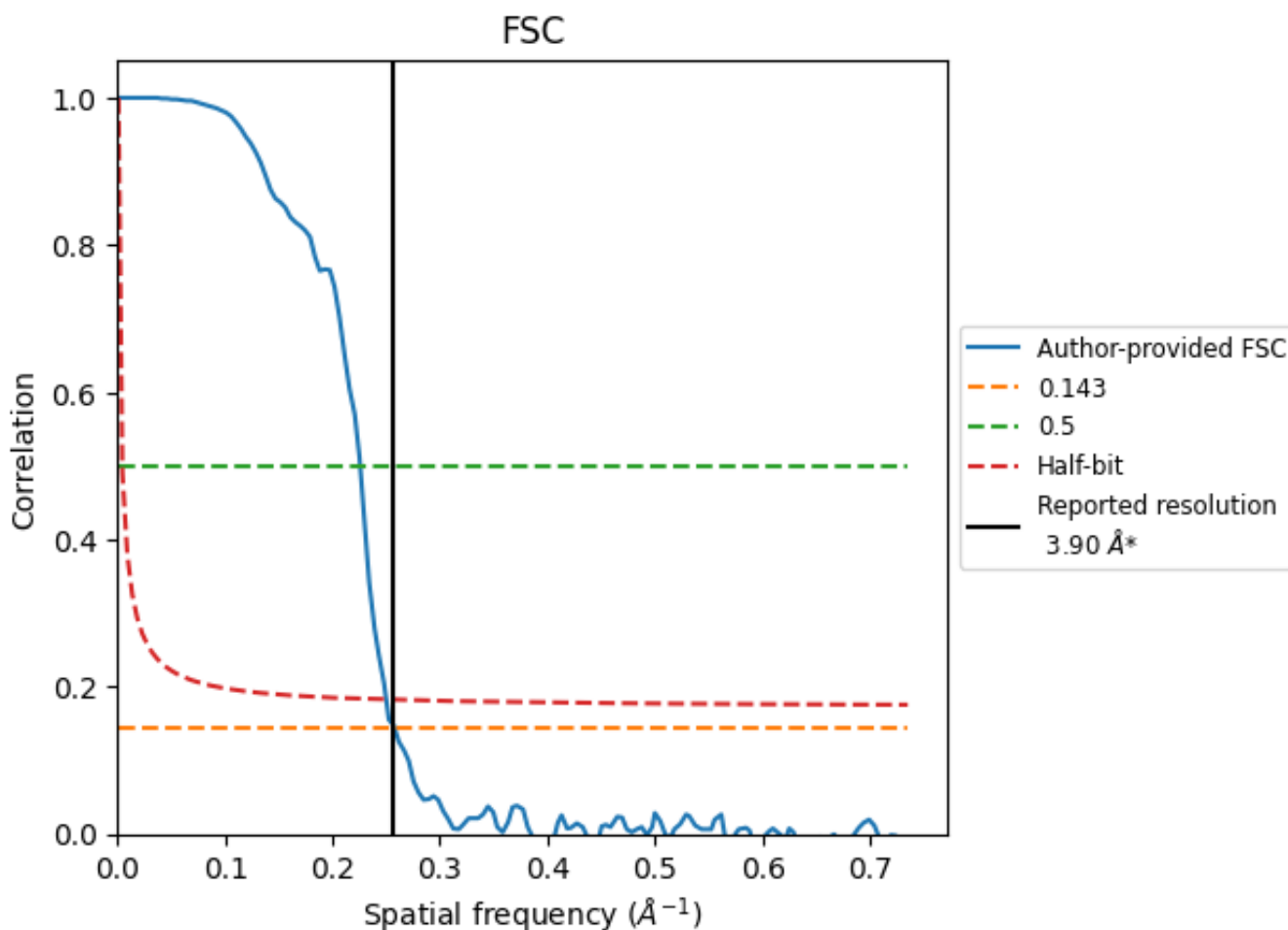


*Reported resolution corresponds to spatial frequency of 0.256\AA^{-1}

8 Fourier-Shell correlation [i](#)

Fourier-Shell Correlation (FSC) is the most commonly used method to estimate the resolution of single-particle and subtomogram-averaged maps. The shape of the curve depends on the imposed symmetry, mask and whether or not the two 3D reconstructions used were processed from a common reference. The reported resolution is shown as a black line. A curve is displayed for the half-bit criterion in addition to lines showing the 0.143 gold standard cut-off and 0.5 cut-off.

8.1 FSC [i](#)



*Reported resolution corresponds to spatial frequency of 0.256 Å⁻¹

8.2 Resolution estimates [i](#)

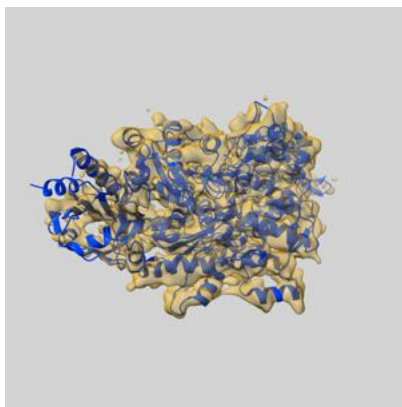
Resolution estimate (Å)	Estimation criterion (FSC cut-off)		
	0.143	0.5	Half-bit
Reported by author	3.90	-	-
Author-provided FSC curve	3.88	4.43	4.00
Unmasked-calculated*	-	-	-

*Resolution estimate based on FSC curve calculated by comparison of deposited half-maps.

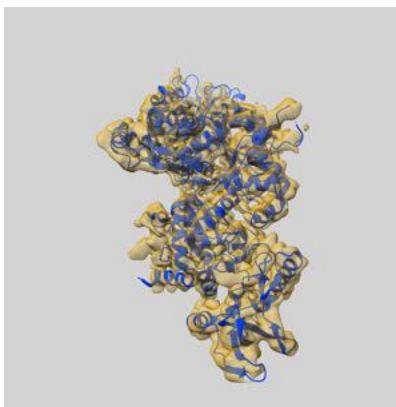
9 Map-model fit [i](#)

This section contains information regarding the fit between EMDB map EMD-13159 and PDB model 7P1H. Per-residue inclusion information can be found in section 3 on page 6.

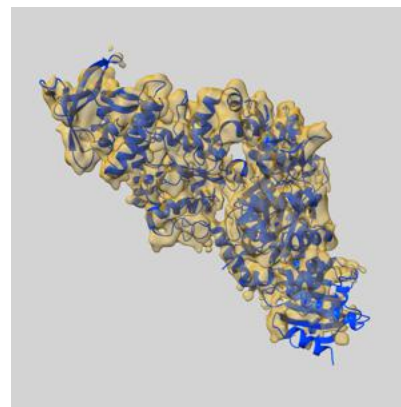
9.1 Map-model overlay [i](#)



X



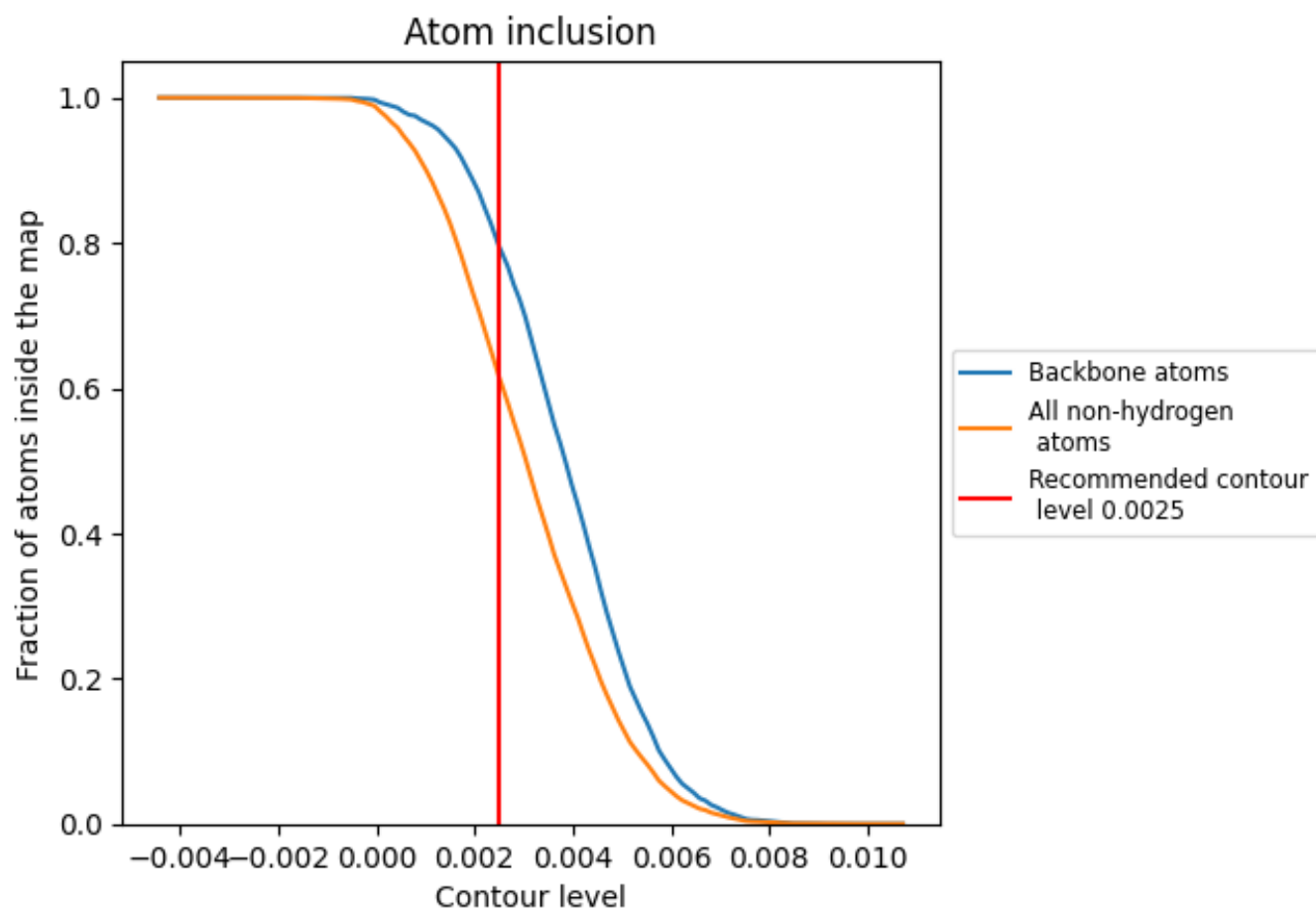
Y



Z

The images above show the 3D surface view of the map at the recommended contour level 0.0025 at 50% transparency in yellow overlaid with a ribbon representation of the model coloured in blue. These images allow for the visual assessment of the quality of fit between the atomic model and the map.

9.2 Atom inclusion [i](#)



At the recommended contour level, 80% of all backbone atoms, 62% of all non-hydrogen atoms, are inside the map.