



Full wwPDB X-ray Structure Validation Report ⓘ

Aug 8, 2023 – 08:02 AM EDT

PDB ID : 1P4R
Title : Crystal Structure of Human ATIC in complex with folate-based inhibitor BW1540U88UD
Authors : Cheong, C.-G.; Greasley, S.E.; Horton, P.A.; Beardsley, G.P.; Wilson, I.A.
Deposited on : 2003-04-23
Resolution : 2.55 Å(reported)

This is a Full wwPDB X-ray Structure Validation Report for a publicly released PDB entry.

We welcome your comments at validation@mail.wwpdb.org

A user guide is available at

<https://www.wwpdb.org/validation/2017/XrayValidationReportHelp>

with specific help available everywhere you see the ⓘ symbol.

The types of validation reports are described at

<http://www.wwpdb.org/validation/2017/FAQs#types>.

The following versions of software and data (see [references ⓘ](#)) were used in the production of this report:

MolProbity : 4.02b-467
Mogul : 1.8.5 (274361), CSD as541be (2020)
Xtriage (Phenix) : 1.13
EDS : 2.35
buster-report : 1.1.7 (2018)
Percentile statistics : 20191225.v01 (using entries in the PDB archive December 25th 2019)
Refmac : 5.8.0158
CCP4 : 7.0.044 (Gargrove)
Ideal geometry (proteins) : Engh & Huber (2001)
Ideal geometry (DNA, RNA) : Parkinson et al. (1996)
Validation Pipeline (wwPDB-VP) : 2.35

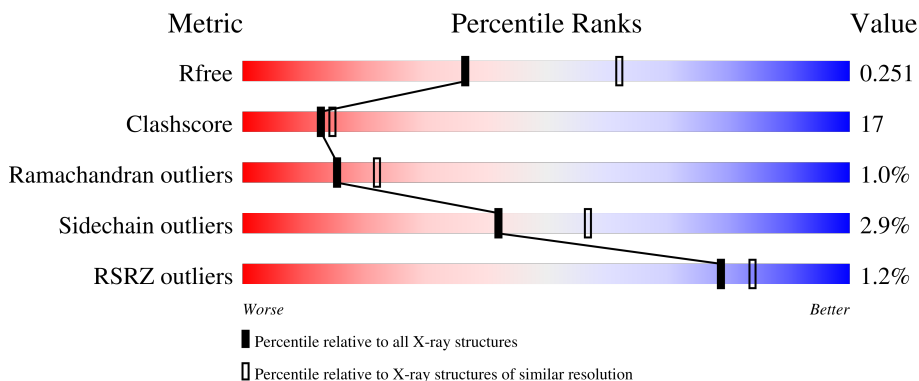
1 Overall quality at a glance

The following experimental techniques were used to determine the structure:

X-RAY DIFFRACTION

The reported resolution of this entry is 2.55 Å.

Percentile scores (ranging between 0-100) for global validation metrics of the entry are shown in the following graphic. The table shows the number of entries on which the scores are based.



Metric	Whole archive (#Entries)	Similar resolution (#Entries, resolution range(Å))
R_{free}	130704	1284 (2.56-2.52)
Clashscore	141614	1332 (2.56-2.52)
Ramachandran outliers	138981	1315 (2.56-2.52)
Sidechain outliers	138945	1315 (2.56-2.52)
RSRZ outliers	127900	1272 (2.56-2.52)

The table below summarises the geometric issues observed across the polymeric chains and their fit to the electron density. The red, orange, yellow and green segments of the lower bar indicate the fraction of residues that contain outliers for ≥ 3 , 2, 1 and 0 types of geometric quality criteria respectively. A grey segment represents the fraction of residues that are not modelled. The numeric value for each fraction is indicated below the corresponding segment, with a dot representing fractions $\leq 5\%$. The upper red bar (where present) indicates the fraction of residues that have poor fit to the electron density. The numeric value is given above the bar.

Mol	Chain	Length	Quality of chain
1	A	592	
1	B	592	

The following table lists non-polymeric compounds, carbohydrate monomers and non-standard residues in protein, DNA, RNA chains that are outliers for geometric or electron-density-fit criteria:

Mol	Type	Chain	Res	Chirality	Geometry	Clashes	Electron density
4	354	A	1801	X	-	-	-
4	354	B	1802	X	-	-	-

2 Entry composition [i](#)

There are 6 unique types of molecules in this entry. The entry contains 9470 atoms, of which 0 are hydrogens and 0 are deuteriums.

In the tables below, the ZeroOcc column contains the number of atoms modelled with zero occupancy, the AltConf column contains the number of residues with at least one atom in alternate conformation and the Trace column contains the number of residues modelled with at most 2 atoms.

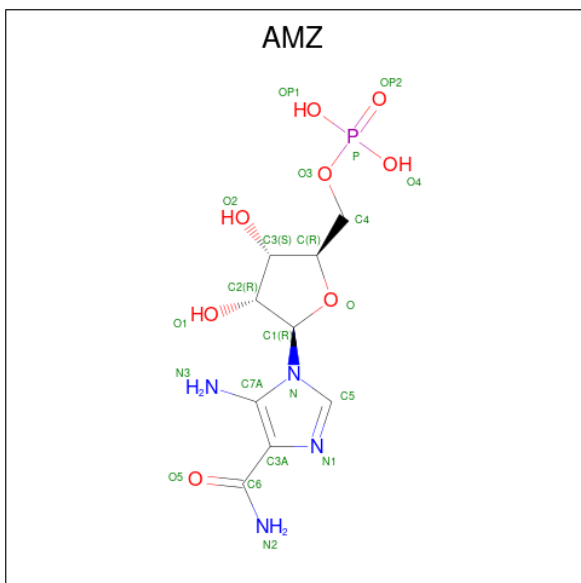
- Molecule 1 is a protein called Bifunctional purine biosynthesis protein PURH.

Mol	Chain	Residues	Atoms					ZeroOcc	AltConf	Trace
			Total	C	N	O	S			
1	A	589	Total 4453	C 2817	N 777	O 841	S 18	0	0	0
1	B	588	Total 4480	C 2831	N 778	O 853	S 18	0	0	0

- Molecule 2 is POTASSIUM ION (three-letter code: K) (formula: K).

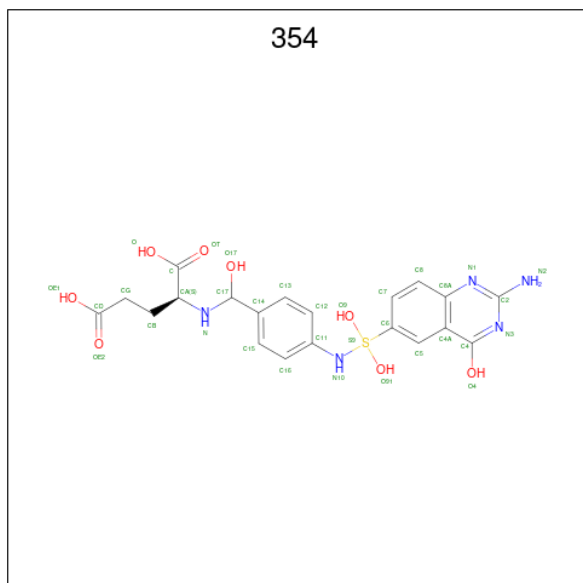
Mol	Chain	Residues	Atoms	ZeroOcc	AltConf
2	A	1	Total 1 K 1	0	0
2	B	1	Total 1 K 1	0	0

- Molecule 3 is AMINOIMIDAZOLE 4-CARBOXAMIDE RIBONUCLEOTIDE (three-letter code: AMZ) (formula: C₉H₁₅N₄O₈P).



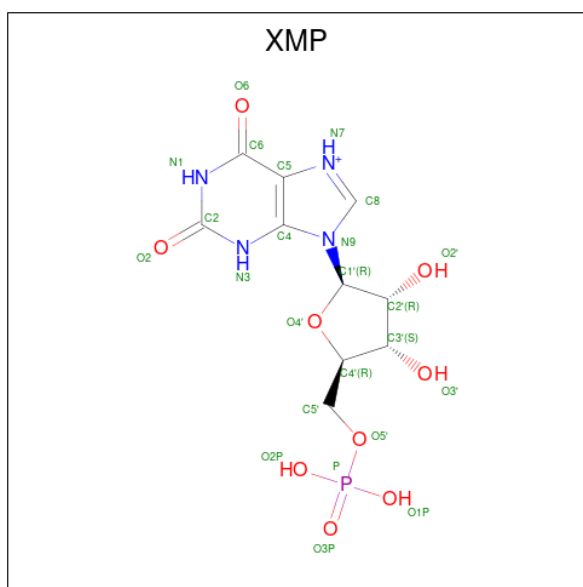
Mol	Chain	Residues	Atoms					ZeroOcc	AltConf
			Total	C	N	O	P		
3	A	1	22	9	4	8	1	0	0
3	B	1	22	9	4	8	1	0	0

- Molecule 4 is N-[(S)-(4-[(2-AMINO-4-HYDROXYQUINAZOLIN-6-YL)(DIHYDROXY)-LAMBDA 4 -SULFANYL]AMINO}PHENYL)(HYDROXY)METHYL]-L-GLUTAMIC ACID (three-letter code: 354) (formula: C₂₀H₂₃N₅O₈S).



Mol	Chain	Residues	Atoms					ZeroOcc	AltConf
			Total	C	N	O	S		
4	A	1	34	20	5	8	1	0	0
4	B	1	34	20	5	8	1	0	0

- Molecule 5 is XANTHOSINE-5'-MONOPHOSPHATE (three-letter code: XMP) (formula: C₁₀H₁₄N₄O₉P).



Mol	Chain	Residues	Atoms					ZeroOcc	AltConf
			Total	C	N	O	P		
5	A	1	24	10	4	9	1	0	0

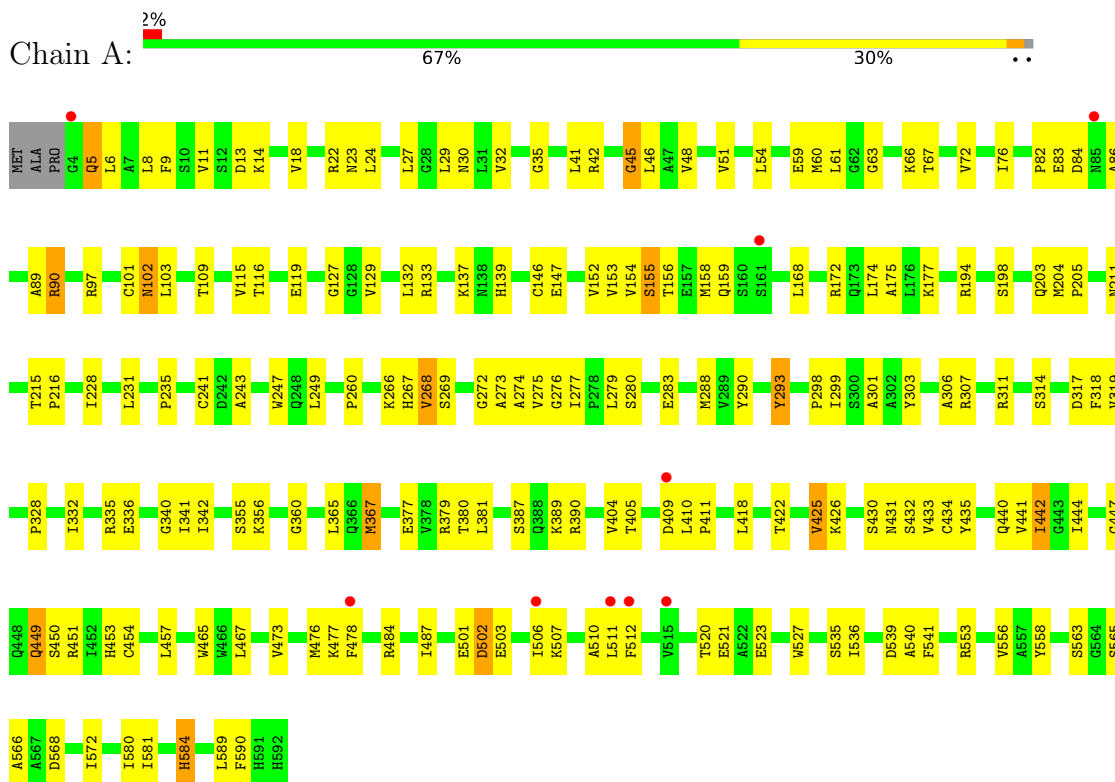
- Molecule 6 is water.

Mol	Chain	Residues	Atoms		ZeroOcc	AltConf
6	A	204	Total	O	0	0
			204	204		
6	B	195	Total	O	0	0
			195	195		

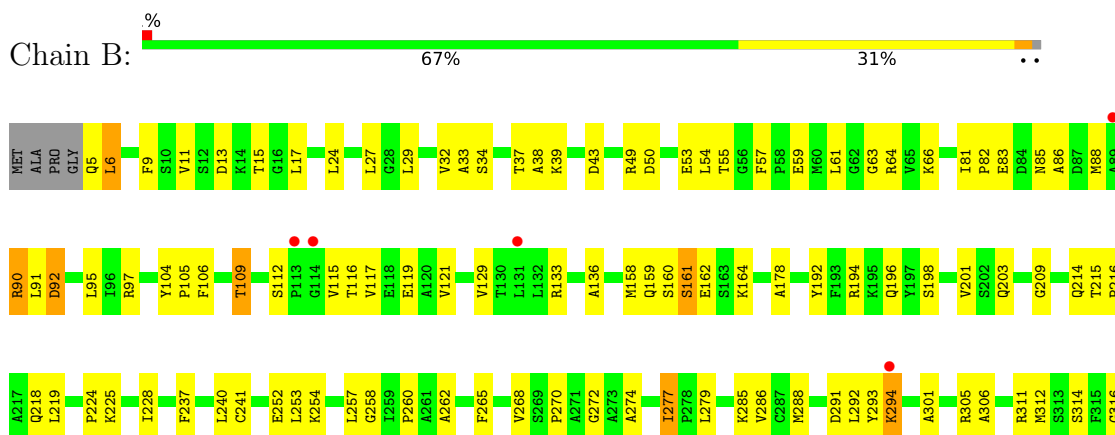
3 Residue-property plots [i](#)

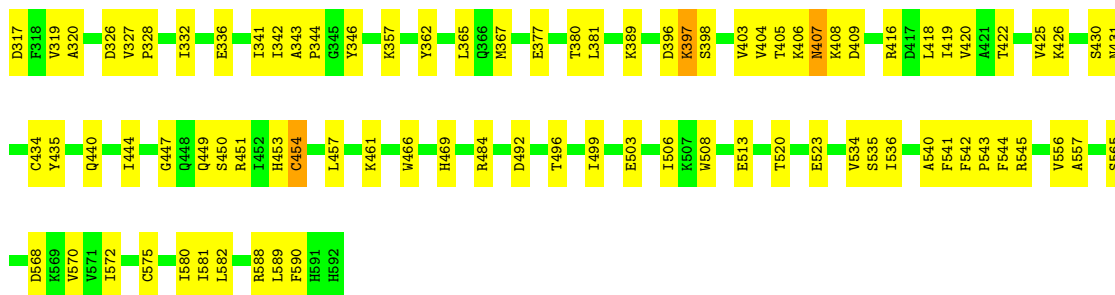
These plots are drawn for all protein, RNA, DNA and oligosaccharide chains in the entry. The first graphic for a chain summarises the proportions of the various outlier classes displayed in the second graphic. The second graphic shows the sequence view annotated by issues in geometry and electron density. Residues are color-coded according to the number of geometric quality criteria for which they contain at least one outlier: green = 0, yellow = 1, orange = 2 and red = 3 or more. A red dot above a residue indicates a poor fit to the electron density ($RSRZ > 2$). Stretches of 2 or more consecutive residues without any outlier are shown as a green connector. Residues present in the sample, but not in the model, are shown in grey.

- Molecule 1: Bifunctional purine biosynthesis protein PURH



- Molecule 1: Bifunctional purine biosynthesis protein PURH





4 Data and refinement statistics

Property	Value	Source
Space group	P 21 21 21	Depositor
Cell constants a, b, c, α , β , γ	83.59Å 93.03Å 164.19Å 90.00° 90.00° 90.00°	Depositor
Resolution (Å)	30.00 – 2.55 29.29 – 2.55	Depositor EDS
% Data completeness (in resolution range)	(Not available) (30.00-2.55) 94.0 (29.29-2.55)	Depositor EDS
R_{merge}	(Not available)	Depositor
R_{sym}	0.11	Depositor
$\langle I/\sigma(I) \rangle$ ¹	3.12 (at 2.54Å)	Xtrriage
Refinement program	CNS	Depositor
R, R_{free}	0.189 , 0.257 0.183 , 0.251	Depositor DCC
R_{free} test set	2131 reflections (5.02%)	wwPDB-VP
Wilson B-factor (Å ²)	25.6	Xtrriage
Anisotropy	0.680	Xtrriage
Bulk solvent k_{sol} (e/Å ³), B_{sol} (Å ²)	0.31 , 42.0	EDS
L-test for twinning ²	$\langle L \rangle = 0.49$, $\langle L^2 \rangle = 0.32$	Xtrriage
Estimated twinning fraction	No twinning to report.	Xtrriage
F_o, F_c correlation	0.93	EDS
Total number of atoms	9470	wwPDB-VP
Average B, all atoms (Å ²)	30.0	wwPDB-VP

Xtrriage's analysis on translational NCS is as follows: *The largest off-origin peak in the Patterson function is 3.18% of the height of the origin peak. No significant pseudotranslation is detected.*

¹Intensities estimated from amplitudes.

²Theoretical values of $\langle |L| \rangle$, $\langle L^2 \rangle$ for acentric reflections are 0.5, 0.333 respectively for untwinned datasets, and 0.375, 0.2 for perfectly twinned datasets.

5 Model quality [i](#)

5.1 Standard geometry [i](#)

Bond lengths and bond angles in the following residue types are not validated in this section: K, 354, XMP, AMZ

The Z score for a bond length (or angle) is the number of standard deviations the observed value is removed from the expected value. A bond length (or angle) with $|Z| > 5$ is considered an outlier worth inspection. RMSZ is the root-mean-square of all Z scores of the bond lengths (or angles).

Mol	Chain	Bond lengths		Bond angles	
		RMSZ	# Z >5	RMSZ	# Z >5
1	A	0.42	0/4536	0.66	0/6166
1	B	0.42	1/4563 (0.0%)	0.66	0/6197
All	All	0.42	1/9099 (0.0%)	0.66	0/12363

All (1) bond length outliers are listed below:

Mol	Chain	Res	Type	Atoms	Z	Observed(Å)	Ideal(Å)
1	B	454	CYS	CB-SG	-5.92	1.72	1.81

There are no bond angle outliers.

There are no chirality outliers.

There are no planarity outliers.

5.2 Too-close contacts [i](#)

In the following table, the Non-H and H(model) columns list the number of non-hydrogen atoms and hydrogen atoms in the chain respectively. The H(added) column lists the number of hydrogen atoms added and optimized by MolProbity. The Clashes column lists the number of clashes within the asymmetric unit, whereas Symm-Clashes lists symmetry-related clashes.

Mol	Chain	Non-H	H(model)	H(added)	Clashes	Symm-Clashes
1	A	4453	0	4420	159	0
1	B	4480	0	4467	156	0
2	A	1	0	0	0	0
2	B	1	0	0	0	0
3	A	22	0	13	0	0
3	B	22	0	13	1	0
4	A	34	0	19	4	0
4	B	34	0	19	2	0

Continued on next page...

Continued from previous page...

Mol	Chain	Non-H	H(model)	H(added)	Clashes	Symm-Clashes
5	A	24	0	12	2	0
6	A	204	0	0	12	0
6	B	195	0	0	7	0
All	All	9470	0	8963	298	0

The all-atom clashscore is defined as the number of clashes found per 1000 atoms (including hydrogen atoms). The all-atom clashscore for this structure is 17.

All (298) close contacts within the same asymmetric unit are listed below, sorted by their clash magnitude.

Atom-1	Atom-2	Interatomic distance (Å)	Clash overlap (Å)
1:A:503:GLU:O	1:A:506:ILE:HG22	1.61	0.98
1:B:409:ASP:HA	6:B:1833:HOH:O	1.70	0.92
1:B:194:ARG:HG2	1:B:203:GLN:HB2	1.56	0.87
1:B:13:ASP:OD1	1:B:15:THR:HG22	1.74	0.87
1:A:41:LEU:O	1:A:46:LEU:HB2	1.75	0.86
1:A:355:SER:O	1:A:360:GLY:HA2	1.77	0.85
1:A:228:ILE:HD11	1:A:365:LEU:HD13	1.60	0.84
1:A:23:ASN:O	1:A:27:LEU:HD13	1.80	0.81
1:B:158:MET:O	1:B:164:LYS:HA	1.81	0.81
1:B:451:ARG:NH2	1:B:540:ALA:HB3	1.97	0.79
1:B:228:ILE:HD11	1:B:365:LEU:HD13	1.64	0.79
1:B:520:THR:HG22	1:B:523:GLU:HG3	1.63	0.78
1:A:11:VAL:HB	1:A:102:ASN:HD21	1.48	0.78
1:B:406:LYS:O	1:B:407:ASN:HB3	1.84	0.77
1:B:541:PHE:CD1	1:B:565:SER:HB2	2.21	0.74
1:A:389:LYS:HD3	1:A:390:ARG:O	1.88	0.74
1:A:426:LYS:HG3	1:A:589:LEU:HD22	1.72	0.71
1:B:520:THR:HG23	1:B:523:GLU:H	1.54	0.71
1:A:32:VAL:HG11	1:A:54:LEU:HD22	1.71	0.71
1:A:168:LEU:O	1:A:172:ARG:HG3	1.92	0.70
1:A:9:PHE:HZ	1:A:24:LEU:HD12	1.58	0.69
1:A:90:ARG:HD3	6:A:1953:HOH:O	1.92	0.68
1:A:279:LEU:HD13	1:A:301:ALA:HB1	1.74	0.68
1:B:520:THR:HG22	1:B:523:GLU:CG	2.23	0.68
1:A:418:LEU:HD23	1:A:535:SER:HB3	1.74	0.68
1:B:13:ASP:CG	1:B:15:THR:HG22	2.14	0.67
1:A:380:THR:HB	1:B:377:GLU:HB2	1.77	0.67
1:B:116:THR:OG1	1:B:119:GLU:HG3	1.94	0.67
1:B:252:GLU:HG3	6:B:1947:HOH:O	1.95	0.67
1:A:241:CYS:HA	1:B:381:LEU:HD21	1.76	0.67

Continued on next page...

Continued from previous page...

Atom-1	Atom-2	Interatomic distance (Å)	Clash overlap (Å)
1:B:294:LYS:HA	6:B:1888:HOH:O	1.95	0.66
1:A:536:ILE:CD1	1:A:556:VAL:HG21	2.26	0.66
1:B:5:GLN:NE2	1:B:95:LEU:HB2	2.10	0.66
1:A:5:GLN:HE21	1:A:97:ARG:HG3	1.62	0.65
1:A:139:HIS:CD2	1:A:172:ARG:HG2	2.32	0.65
1:A:451:ARG:NH2	1:A:540:ALA:HB3	2.12	0.64
1:A:520:THR:OG1	1:A:523:GLU:HG3	1.97	0.64
1:A:328:PRO:O	1:A:332:ILE:HG13	1.98	0.63
1:A:51:VAL:HB	6:A:1945:HOH:O	1.97	0.63
1:A:6:LEU:HD23	1:A:30:ASN:HB2	1.81	0.63
1:B:268:VAL:HG12	6:B:1809:HOH:O	1.98	0.63
1:B:63:GLY:HA3	1:B:66:LYS:HE3	1.81	0.62
1:A:101:CYS:O	1:A:146:CYS:HA	1.99	0.62
1:A:430:SER:O	1:A:447:GLY:HA2	1.99	0.62
1:B:106:PHE:HA	1:B:109:THR:HG23	1.81	0.62
1:A:314:SER:O	1:A:317:ASP:HB3	2.00	0.61
1:A:507:LYS:O	1:A:510:ALA:HB3	2.00	0.61
1:A:536:ILE:HD11	1:A:556:VAL:HG21	1.83	0.61
1:A:243:ALA:HB2	1:A:318:PHE:CE1	2.35	0.61
1:B:129:VAL:O	1:B:133:ARG:HG3	2.01	0.61
1:B:5:GLN:C	1:B:6:LEU:HD23	2.21	0.61
1:B:450:SER:HA	4:B:1802:354:O9	2.00	0.61
1:A:274:ALA:HB2	1:A:440:GLN:HB2	1.82	0.61
1:A:311:ARG:NH2	1:A:336:GLU:OE2	2.29	0.61
1:A:418:LEU:CD2	1:A:535:SER:HB3	2.30	0.60
1:A:267:HIS:NE2	1:B:431:ASN:OD1	2.35	0.60
1:A:13:ASP:H	1:A:102:ASN:ND2	1.99	0.59
1:A:129:VAL:O	1:A:133:ARG:HG3	2.02	0.59
1:A:311:ARG:HH22	1:A:336:GLU:CD	2.06	0.59
1:B:405:THR:HG23	1:B:582:LEU:HB3	1.85	0.59
1:B:406:LYS:O	1:B:407:ASN:CB	2.51	0.59
1:A:521:GLU:HA	1:A:521:GLU:OE1	2.03	0.59
1:B:34:SER:N	1:B:38:ALA:HB2	2.19	0.58
1:B:311:ARG:HH22	1:B:484:ARG:HH12	1.52	0.58
1:A:11:VAL:HB	1:A:102:ASN:ND2	2.17	0.57
1:A:541:PHE:CD1	1:A:565:SER:HB2	2.39	0.57
1:A:319:VAL:HB	1:A:341:ILE:HG13	1.87	0.57
1:A:5:GLN:HG2	1:A:97:ARG:HB2	1.86	0.57
1:B:112:SER:HB3	1:B:115:VAL:HG11	1.87	0.57
1:A:568:ASP:O	1:A:572:ILE:HG13	2.04	0.56
1:A:211:ASN:HA	1:B:588:ARG:HH21	1.69	0.56

Continued on next page...

Continued from previous page...

Atom-1	Atom-2	Interatomic distance (Å)	Clash overlap (Å)
1:B:397:LYS:HD2	1:B:397:LYS:N	2.20	0.56
1:B:59:GLU:HB2	6:B:1980:HOH:O	2.05	0.56
1:A:9:PHE:CZ	1:A:24:LEU:HD12	2.41	0.56
1:A:279:LEU:CD1	1:A:301:ALA:HB1	2.35	0.56
1:A:449:GLN:N	1:A:449:GLN:OE1	2.39	0.55
1:B:291:ASP:O	1:B:292:LEU:HD23	2.05	0.55
1:B:575:CYS:SG	1:B:582:LEU:HD22	2.45	0.55
1:B:5:GLN:HE21	1:B:95:LEU:HB2	1.71	0.55
1:A:342:ILE:HD11	1:A:367:MET:HB2	1.89	0.55
1:A:442:ILE:HG13	1:A:465:TRP:CD2	2.42	0.55
1:B:357:LYS:HB2	1:B:362:TYR:HB2	1.89	0.55
1:A:67:THR:HG23	5:A:1901:XMP:H7	1.72	0.54
1:A:139:HIS:HD2	1:A:172:ARG:HG2	1.71	0.54
1:B:104:TYR:CD2	1:B:109:THR:HG22	2.43	0.54
1:B:435:TYR:CZ	1:B:536:ILE:HD11	2.42	0.54
4:A:1801:354:H8	1:B:312:MET:O	2.07	0.54
1:B:109:THR:HG21	6:B:1831:HOH:O	2.07	0.54
1:B:492:ASP:O	1:B:496:THR:HG23	2.08	0.53
1:A:72:VAL:O	1:A:76:ILE:HG13	2.08	0.53
1:A:435:TYR:CE2	1:A:536:ILE:HD11	2.43	0.53
1:A:13:ASP:H	1:A:102:ASN:HD22	1.56	0.53
1:B:49:ARG:HG3	1:B:53:GLU:OE1	2.09	0.53
1:B:161:SER:OG	1:B:162:GLU:N	2.41	0.53
1:B:292:LEU:HA	1:B:294:LYS:NZ	2.23	0.53
1:A:450:SER:HA	4:A:1801:354:O9	2.09	0.53
1:B:253:LEU:HD21	1:B:420:VAL:HA	1.90	0.53
1:B:397:LYS:HD2	1:B:397:LYS:H	1.73	0.53
1:A:430:SER:HA	1:A:431:ASN:C	2.29	0.53
1:B:568:ASP:O	1:B:572:ILE:HG13	2.08	0.53
1:A:422:THR:O	1:A:425:VAL:HG12	2.09	0.53
1:A:405:THR:HG21	1:A:580:ILE:O	2.09	0.52
1:A:381:LEU:HD21	1:B:241:CYS:HA	1.92	0.52
1:A:409:ASP:O	1:A:411:PRO:HD3	2.09	0.52
1:B:435:TYR:CE2	1:B:536:ILE:HD11	2.45	0.52
1:B:520:THR:CG2	1:B:523:GLU:HG3	2.34	0.52
1:B:117:VAL:HA	1:B:192:TYR:OH	2.09	0.52
1:B:17:LEU:HD21	1:B:37:THR:HG23	1.92	0.51
1:B:520:THR:CG2	1:B:523:GLU:H	2.23	0.51
1:A:8:LEU:HA	1:A:32:VAL:O	2.11	0.51
1:B:409:ASP:O	1:B:581:ILE:HD11	2.11	0.51
1:B:61:LEU:O	1:B:64:ARG:HG3	2.10	0.51

Continued on next page...

Continued from previous page...

Atom-1	Atom-2	Interatomic distance (Å)	Clash overlap (Å)
1:A:205:PRO:HG3	6:A:1969:HOH:O	2.10	0.51
1:A:307:ARG:CZ	1:A:336:GLU:HB3	2.41	0.51
1:A:553:ARG:HD3	6:A:2001:HOH:O	2.11	0.51
1:A:152:VAL:HG13	1:A:153:VAL:N	2.26	0.51
1:B:55:THR:C	1:B:57:PHE:H	2.14	0.51
1:B:341:ILE:HG12	1:B:342:ILE:N	2.26	0.51
1:B:9:PHE:HZ	1:B:24:LEU:HD12	1.75	0.51
1:A:387:SER:HB3	1:B:218:GLN:HG2	1.92	0.51
1:B:219:LEU:HD22	1:B:240:LEU:HD13	1.92	0.51
1:B:311:ARG:NH2	1:B:484:ARG:HH12	2.09	0.51
1:B:314:SER:O	1:B:317:ASP:HB3	2.11	0.51
1:B:520:THR:HG22	1:B:523:GLU:OE2	2.11	0.50
1:B:262:ALA:HA	1:B:320:ALA:O	2.11	0.50
1:A:410:LEU:HD13	1:A:581:ILE:HG21	1.93	0.50
1:B:201:VAL:HG13	1:B:225:LYS:HE2	1.92	0.50
1:A:563:SER:HB3	1:A:584:HIS:CG	2.47	0.50
1:A:215:THR:OG1	1:A:216:PRO:HA	2.12	0.49
1:A:444:ILE:CG2	1:B:449:GLN:NE2	2.75	0.49
1:A:503:GLU:O	1:A:507:LYS:HG3	2.11	0.49
1:B:265:PHE:CE1	1:B:270:PRO:HB3	2.47	0.49
1:B:397:LYS:H	1:B:397:LYS:CD	2.23	0.49
1:B:277:ILE:HG23	1:B:305:ARG:NE	2.27	0.49
1:A:5:GLN:HE21	1:A:97:ARG:CG	2.24	0.49
1:B:326:ASP:CG	1:B:328:PRO:HD2	2.33	0.49
1:B:426:LYS:HG3	1:B:589:LEU:HD22	1.95	0.49
1:A:435:TYR:CZ	1:A:536:ILE:HD11	2.46	0.49
1:B:159:GLN:O	1:B:161:SER:N	2.45	0.49
1:A:444:ILE:HG23	1:B:449:GLN:HE22	1.77	0.49
1:B:279:LEU:CD1	1:B:301:ALA:HB1	2.42	0.49
1:B:5:GLN:O	1:B:6:LEU:HD23	2.12	0.49
1:B:277:ILE:HD12	1:B:416:ARG:NH1	2.28	0.48
1:B:457:LEU:O	1:B:457:LEU:HD23	2.12	0.48
1:A:442:ILE:HG13	1:A:465:TRP:CE3	2.48	0.48
1:A:381:LEU:CD2	1:B:241:CYS:HA	2.43	0.48
1:A:467:LEU:HD23	1:A:527:TRP:CD1	2.47	0.48
1:B:209:GLY:HA2	1:B:237:PHE:HB2	1.96	0.48
1:B:557:ALA:C	1:B:580:ILE:HG23	2.33	0.48
1:A:434:CYS:HB2	1:A:444:ILE:HD12	1.96	0.48
1:A:553:ARG:NH2	6:A:2039:HOH:O	2.47	0.48
1:B:27:LEU:HD22	1:B:164:LYS:HG2	1.94	0.48
1:B:254:LYS:O	1:B:258:GLY:N	2.45	0.48

Continued on next page...

Continued from previous page...

Atom-1	Atom-2	Interatomic distance (Å)	Clash overlap (Å)
1:A:83:GLU:CD	1:A:83:GLU:H	2.17	0.48
1:A:432:SER:HB2	1:A:539:ASP:OD1	2.12	0.48
1:A:442:ILE:HD11	1:A:465:TRP:CZ2	2.48	0.48
1:B:451:ARG:HB3	4:B:1802:354:H5	1.95	0.48
1:B:457:LEU:CD2	1:B:461:LYS:HE3	2.44	0.48
1:B:430:SER:HA	1:B:431:ASN:C	2.33	0.48
1:A:211:ASN:HA	1:B:588:ARG:NH2	2.29	0.48
1:A:42:ARG:NH2	1:A:48:VAL:O	2.46	0.47
1:A:194:ARG:O	1:A:198:SER:N	2.43	0.47
1:A:356:LYS:HB3	6:A:2053:HOH:O	2.13	0.47
1:A:453:HIS:O	1:A:457:LEU:HB2	2.14	0.47
1:B:341:ILE:HD13	1:B:346:TYR:HE2	1.77	0.47
1:A:377:GLU:HB2	1:B:380:THR:HB	1.95	0.47
1:B:294:LYS:H	1:B:294:LYS:HD2	1.79	0.47
1:A:137:LYS:HE3	1:B:121:VAL:O	2.14	0.47
1:A:45:GLY:O	1:A:46:LEU:HG	2.15	0.47
1:B:434:CYS:HB2	1:B:444:ILE:CD1	2.44	0.47
1:A:241:CYS:HA	1:B:381:LEU:CD2	2.44	0.47
1:B:277:ILE:HD12	1:B:416:ARG:HH12	1.79	0.47
1:B:466:TRP:HA	1:B:466:TRP:CE3	2.49	0.47
1:A:155:SER:O	1:A:159:GLN:HG3	2.15	0.47
1:A:404:VAL:HG11	6:A:1998:HOH:O	2.15	0.47
1:B:449:GLN:OE1	1:B:449:GLN:N	2.48	0.47
1:A:18:VAL:HG13	1:A:46:LEU:HD11	1.96	0.46
1:A:109:THR:HG22	1:A:115:VAL:HG21	1.98	0.46
1:A:303:TYR:CE1	1:A:319:VAL:HG13	2.50	0.46
1:B:543:PRO:HB2	1:B:544:PHE:CD1	2.50	0.46
1:A:566:ALA:N	4:A:1801:354:O	2.38	0.46
1:B:63:GLY:O	1:B:66:LYS:HG2	2.15	0.46
1:B:430:SER:O	1:B:447:GLY:HA2	2.15	0.46
1:B:272:GLY:HA3	1:B:306:ALA:O	2.16	0.46
1:A:563:SER:HB3	1:A:584:HIS:ND1	2.31	0.46
1:B:161:SER:HB3	6:B:1836:HOH:O	2.15	0.46
1:B:33:ALA:O	1:B:50:ASP:HA	2.16	0.46
1:A:307:ARG:NH2	1:A:336:GLU:HB3	2.30	0.46
1:A:103:LEU:HD21	1:A:132:LEU:HD12	1.96	0.46
1:B:292:LEU:O	1:B:294:LYS:N	2.49	0.46
1:A:22:ARG:HG2	1:A:46:LEU:HD21	1.97	0.45
1:A:59:GLU:CD	1:A:66:LYS:HD2	2.36	0.45
1:A:60:MET:HG3	1:A:61:LEU:HG	1.99	0.45
1:B:343:ALA:HB1	1:B:344:PRO:HD2	1.99	0.45

Continued on next page...

Continued from previous page...

Atom-1	Atom-2	Interatomic distance (Å)	Clash overlap (Å)
1:B:24:LEU:HD22	1:B:29:LEU:HD12	1.99	0.45
1:A:154:VAL:O	1:A:158:MET:HG3	2.17	0.45
1:A:273:ALA:O	1:A:441:VAL:HG23	2.17	0.45
1:B:503:GLU:OE1	1:B:506:ILE:HD12	2.16	0.45
1:A:24:LEU:O	1:A:29:LEU:HB2	2.17	0.45
1:B:285:LYS:O	1:B:288:MET:CE	2.65	0.45
1:B:332:ILE:O	1:B:336:GLU:HG2	2.17	0.45
1:A:335:ARG:HH21	1:A:484:ARG:NH1	2.15	0.45
1:A:275:VAL:HG23	1:A:277:ILE:HG13	1.98	0.45
1:B:215:THR:OG1	1:B:216:PRO:HA	2.16	0.45
1:B:418:LEU:HD23	1:B:535:SER:HB3	1.99	0.45
1:B:422:THR:HA	1:B:425:VAL:HG22	1.99	0.45
1:B:136:ALA:HB2	1:B:178:ALA:HB3	1.98	0.45
1:B:344:PRO:HA	1:B:367:MET:O	2.17	0.45
1:A:86:ALA:O	1:A:89:ALA:HB3	2.17	0.45
1:B:404:VAL:HG13	1:B:404:VAL:O	2.16	0.44
1:A:540:ALA:HB2	1:A:590:PHE:CE1	2.52	0.44
1:B:396:ASP:OD1	1:B:398:SER:HB3	2.17	0.44
1:A:335:ARG:O	1:A:484:ARG:HD3	2.18	0.44
1:B:286:VAL:HG21	1:B:469:HIS:CE1	2.52	0.44
1:A:6:LEU:CD2	1:A:30:ASN:HB2	2.46	0.44
1:A:318:PHE:CE2	1:A:340:GLY:HA3	2.53	0.44
1:A:127:GLY:HA3	5:A:1901:XMP:C6	2.47	0.44
1:B:405:THR:CG2	1:B:582:LEU:HB3	2.46	0.44
1:A:204:MET:HE1	1:A:235:PRO:HG3	1.99	0.44
1:A:288:MET:HG3	1:A:311:ARG:NE	2.32	0.44
1:B:277:ILE:HG23	1:B:305:ARG:HE	1.83	0.44
1:A:24:LEU:HD22	1:A:29:LEU:HD12	2.00	0.44
1:A:478:PHE:CZ	1:A:487:ILE:HG23	2.53	0.44
1:B:34:SER:CA	1:B:38:ALA:HB2	2.48	0.44
1:B:83:GLU:H	1:B:83:GLU:HG3	1.40	0.44
1:B:254:LYS:HD3	1:B:260:PRO:HA	1.99	0.44
1:A:444:ILE:HG23	1:B:449:GLN:NE2	2.33	0.43
1:B:81:ILE:O	1:B:85:ASN:ND2	2.51	0.43
1:A:177:LYS:HE2	1:B:224:PRO:HG3	2.00	0.43
1:A:266:LYS:HD2	1:A:266:LYS:HA	1.91	0.43
1:A:379:ARG:HB3	6:A:2081:HOH:O	2.17	0.43
1:A:453:HIS:CD2	6:A:1914:HOH:O	2.71	0.43
4:A:1801:354:H16	1:B:316:GLY:HA3	2.00	0.43
1:A:5:GLN:NE2	6:A:2003:HOH:O	2.51	0.43
1:A:147:GLU:HG3	1:A:177:LYS:HD3	2.01	0.43

Continued on next page...

Continued from previous page...

Atom-1	Atom-2	Interatomic distance (Å)	Clash overlap (Å)
1:A:152:VAL:HG13	1:A:153:VAL:H	1.84	0.43
1:A:249:LEU:C	1:A:249:LEU:HD23	2.38	0.43
1:A:389:LYS:HD2	1:B:214:GLN:HA	2.00	0.43
1:A:506:ILE:CG2	1:A:507:LYS:N	2.82	0.43
1:B:88:MET:HE2	1:B:95:LEU:HD23	2.00	0.43
1:B:33:ALA:C	1:B:38:ALA:HB2	2.39	0.43
1:B:499:ILE:HD13	1:B:508:TRP:CD2	2.54	0.43
1:A:155:SER:O	1:A:156:THR:C	2.57	0.43
1:A:266:LYS:HE3	3:B:1702:AMZ:O1	2.18	0.42
1:B:357:LYS:HB2	1:B:362:TYR:CB	2.49	0.42
1:A:59:GLU:OE1	1:A:66:LYS:HD2	2.20	0.42
1:B:90:ARG:C	1:B:92:ASP:H	2.22	0.42
1:B:545:ARG:HD2	1:B:570:VAL:HG12	2.01	0.42
1:A:280:SER:OG	1:A:283:GLU:HG3	2.20	0.42
1:B:575:CYS:HB3	1:B:580:ILE:O	2.19	0.42
1:A:116:THR:OG1	1:A:119:GLU:HG3	2.20	0.42
1:B:83:GLU:O	1:B:86:ALA:HB3	2.20	0.42
1:A:520:THR:HG1	1:A:523:GLU:HG3	1.85	0.42
1:B:196:GLN:NE2	1:B:196:GLN:HA	2.35	0.42
1:B:240:LEU:HD23	1:B:240:LEU:HA	1.86	0.42
1:B:534:VAL:O	1:B:556:VAL:HA	2.20	0.42
1:A:260:PRO:HB3	1:A:299:ILE:HD13	2.01	0.42
1:A:276:GLY:HA3	1:A:298:PRO:O	2.20	0.42
1:A:63:GLY:HA2	1:A:66:LYS:HD3	2.01	0.42
1:A:249:LEU:HD23	1:A:249:LEU:O	2.20	0.41
1:B:257:LEU:HD21	1:B:419:ILE:HD12	2.02	0.41
1:B:434:CYS:HB2	1:B:444:ILE:HD13	2.01	0.41
1:A:174:LEU:HD23	1:A:174:LEU:HA	1.85	0.41
1:A:204:MET:HE3	1:A:235:PRO:HG2	2.02	0.41
1:A:405:THR:HB	6:A:1934:HOH:O	2.20	0.41
1:A:473:VAL:O	1:A:476:MET:HG3	2.20	0.41
1:B:327:VAL:HB	1:B:328:PRO:HD3	2.01	0.41
1:B:536:ILE:HD11	1:B:556:VAL:HG21	2.03	0.41
1:A:501:GLU:O	1:A:502:ASP:C	2.59	0.41
1:B:11:VAL:CG2	1:B:17:LEU:HD22	2.50	0.41
1:B:274:ALA:HB2	1:B:440:GLN:HB2	2.02	0.41
1:A:298:PRO:HD2	6:A:2080:HOH:O	2.19	0.41
1:A:5:GLN:HB3	1:A:29:LEU:CD2	2.50	0.41
1:A:194:ARG:HB3	1:A:203:GLN:HB2	2.02	0.41
1:A:272:GLY:HA3	1:A:306:ALA:O	2.19	0.41
1:A:506:ILE:HG23	1:A:507:LYS:N	2.36	0.41

Continued on next page...

Continued from previous page...

Atom-1	Atom-2	Interatomic distance (Å)	Clash overlap (Å)
1:B:81:ILE:HB	1:B:82:PRO:HD2	2.02	0.41
1:A:267:HIS:C	1:A:268:VAL:HG23	2.39	0.41
1:A:290:TYR:O	1:A:293:TYR:HB2	2.21	0.41
1:A:433:VAL:HB	1:A:454:CYS:HB3	2.03	0.41
1:B:39:LYS:HG2	1:B:43:ASP:OD2	2.21	0.41
1:B:403:VAL:HG11	1:B:408:LYS:HA	2.03	0.41
1:B:453:HIS:O	1:B:457:LEU:HB2	2.20	0.41
1:B:542:PHE:HA	1:B:543:PRO:HD3	1.72	0.41
1:B:588:ARG:CZ	1:B:590:PHE:CD2	3.04	0.41
1:A:139:HIS:CB	1:A:175:ALA:HB2	2.51	0.41
1:A:510:ALA:O	1:A:512:PHE:N	2.54	0.41
1:A:203:GLN:HE22	1:A:205:PRO:HG3	1.85	0.40
1:A:215:THR:O	1:B:389:LYS:HD2	2.21	0.40
1:B:90:ARG:C	1:B:92:ASP:N	2.74	0.40
1:B:90:ARG:O	1:B:92:ASP:N	2.53	0.40
1:B:106:PHE:CA	1:B:109:THR:HG23	2.50	0.40
1:A:139:HIS:HB3	1:A:175:ALA:HB2	2.04	0.40
1:A:247:TRP:CE2	1:A:367:MET:HG2	2.57	0.40
1:B:32:VAL:HG11	1:B:54:LEU:HD12	2.04	0.40
1:B:409:ASP:O	1:B:581:ILE:CD1	2.69	0.40
1:B:543:PRO:HB2	1:B:544:PHE:HD1	1.85	0.40
1:A:231:LEU:HD23	1:A:231:LEU:HA	1.88	0.40

There are no symmetry-related clashes.

5.3 Torsion angles [i](#)

5.3.1 Protein backbone [i](#)

In the following table, the Percentiles column shows the percent Ramachandran outliers of the chain as a percentile score with respect to all X-ray entries followed by that with respect to entries of similar resolution.

The Analysed column shows the number of residues for which the backbone conformation was analysed, and the total number of residues.

Mol	Chain	Analysed	Favoured	Allowed	Outliers	Percentiles	
1	A	587/592 (99%)	552 (94%)	29 (5%)	6 (1%)	15	22
1	B	586/592 (99%)	542 (92%)	38 (6%)	6 (1%)	15	22
All	All	1173/1184 (99%)	1094 (93%)	67 (6%)	12 (1%)	15	22

All (12) Ramachandran outliers are listed below:

Mol	Chain	Res	Type
1	A	502	ASP
1	A	45	GLY
1	A	511	LEU
1	B	160	SER
1	B	293	TYR
1	B	407	ASN
1	A	35	GLY
1	A	82	PRO
1	A	293	TYR
1	B	90	ARG
1	B	91	LEU
1	B	105	PRO

5.3.2 Protein sidechains [i](#)

In the following table, the Percentiles column shows the percent sidechain outliers of the chain as a percentile score with respect to all X-ray entries followed by that with respect to entries of similar resolution.

The Analysed column shows the number of residues for which the sidechain conformation was analysed, and the total number of residues.

Mol	Chain	Analysed	Rotameric	Outliers	Percentiles	
1	A	465/488 (95%)	450 (97%)	15 (3%)	39	53
1	B	475/488 (97%)	463 (98%)	12 (2%)	47	62
All	All	940/976 (96%)	913 (97%)	27 (3%)	42	57

All (27) residues with a non-rotameric sidechain are listed below:

Mol	Chain	Res	Type
1	A	5	GLN
1	A	14	LYS
1	A	84	ASP
1	A	90	ARG
1	A	102	ASN
1	A	155	SER
1	A	268	VAL
1	A	269	SER
1	A	367	MET
1	A	425	VAL
1	A	442	ILE

Continued on next page...

Continued from previous page...

Mol	Chain	Res	Type
1	A	449	GLN
1	A	477	LYS
1	A	558	TYR
1	A	584	HIS
1	B	6	LEU
1	B	92	ASP
1	B	97	ARG
1	B	109	THR
1	B	161	SER
1	B	198	SER
1	B	277	ILE
1	B	294	LYS
1	B	319	VAL
1	B	397	LYS
1	B	454	CYS
1	B	513	GLU

Sometimes sidechains can be flipped to improve hydrogen bonding and reduce clashes. All (11) such sidechains are listed below:

Mol	Chain	Res	Type
1	A	5	GLN
1	A	23	ASN
1	A	85	ASN
1	A	102	ASN
1	A	159	GLN
1	A	173	GLN
1	A	376	ASN
1	A	453	HIS
1	B	85	ASN
1	B	196	GLN
1	B	453	HIS

5.3.3 RNA [i](#)

There are no RNA molecules in this entry.

5.4 Non-standard residues in protein, DNA, RNA chains [i](#)

There are no non-standard protein/DNA/RNA residues in this entry.

5.5 Carbohydrates [i](#)

There are no monosaccharides in this entry.

5.6 Ligand geometry [i](#)

Of 7 ligands modelled in this entry, 2 are monoatomic - leaving 5 for Mogul analysis.

In the following table, the Counts columns list the number of bonds (or angles) for which Mogul statistics could be retrieved, the number of bonds (or angles) that are observed in the model and the number of bonds (or angles) that are defined in the Chemical Component Dictionary. The Link column lists molecule types, if any, to which the group is linked. The Z score for a bond length (or angle) is the number of standard deviations the observed value is removed from the expected value. A bond length (or angle) with $|Z| > 2$ is considered an outlier worth inspection. RMSZ is the root-mean-square of all Z scores of the bond lengths (or angles).

Mol	Type	Chain	Res	Link	Bond lengths			Bond angles		
					Counts	RMSZ	# Z > 2	Counts	RMSZ	# Z > 2
4	354	A	1801	-	31,36,36	3.09	17 (54%)	41,52,52	2.90	15 (36%)
3	AMZ	A	1701	-	18,23,23	2.83	6 (33%)	22,35,35	1.80	5 (22%)
3	AMZ	B	1702	-	18,23,23	2.79	5 (27%)	22,35,35	1.92	6 (27%)
5	XMP	A	1901	-	20,26,26	2.24	6 (30%)	27,40,40	2.59	10 (37%)
4	354	B	1802	-	31,36,36	3.15	16 (51%)	41,52,52	2.77	14 (34%)

In the following table, the Chirals column lists the number of chiral outliers, the number of chiral centers analysed, the number of these observed in the model and the number defined in the Chemical Component Dictionary. Similar counts are reported in the Torsion and Rings columns. '-' means no outliers of that kind were identified.

Mol	Type	Chain	Res	Link	Chirals	Torsions	Rings
4	354	A	1801	-	1/1/5/7	3/21/28/28	0/3/3/3
3	AMZ	A	1701	-	-	0/6/30/30	0/2/2/2
3	AMZ	B	1702	-	-	0/6/30/30	0/2/2/2
5	XMP	A	1901	-	-	5/6/26/26	0/3/3/3
4	354	B	1802	-	1/1/5/7	4/21/28/28	0/3/3/3

All (50) bond length outliers are listed below:

Mol	Chain	Res	Type	Atoms	Z	Observed(Å)	Ideal(Å)
3	B	1702	AMZ	C6-N2	8.43	1.49	1.33
3	A	1701	AMZ	C6-N2	8.28	1.48	1.33
4	B	1802	354	OT-C	7.30	1.44	1.22
4	A	1801	354	OT-C	6.79	1.42	1.22

Continued on next page...

Continued from previous page...

Mol	Chain	Res	Type	Atoms	Z	Observed(Å)	Ideal(Å)
4	B	1802	354	C2-N3	5.96	1.46	1.35
3	B	1702	AMZ	C7A-N3	5.63	1.50	1.33
4	A	1801	354	C2-N3	5.60	1.45	1.35
4	B	1802	354	C8A-N1	5.45	1.46	1.37
5	A	1901	XMP	C6-N1	5.14	1.45	1.37
4	B	1802	354	C15-C14	5.00	1.47	1.39
4	A	1801	354	C8-C7	4.90	1.46	1.36
4	A	1801	354	C15-C14	4.87	1.46	1.39
4	A	1801	354	C8A-N1	4.83	1.45	1.37
3	A	1701	AMZ	C7A-N3	4.68	1.47	1.33
4	A	1801	354	C13-C14	4.67	1.46	1.39
4	B	1802	354	C13-C14	4.58	1.46	1.39
4	B	1802	354	C8-C7	4.50	1.46	1.36
4	B	1802	354	OE2-CD	4.46	1.36	1.22
4	A	1801	354	OE2-CD	4.43	1.36	1.22
5	A	1901	XMP	C2-N3	4.34	1.44	1.36
5	A	1901	XMP	C2-N1	4.33	1.44	1.37
3	A	1701	AMZ	C3-C	-3.89	1.43	1.53
4	B	1802	354	O17-C17	-3.83	1.25	1.40
3	A	1701	AMZ	O-C1	3.78	1.46	1.41
4	A	1801	354	O17-C17	-3.74	1.25	1.40
4	A	1801	354	C2-N2	3.72	1.41	1.33
4	B	1802	354	C4A-C8A	3.66	1.48	1.42
5	A	1901	XMP	P-O3P	3.64	1.62	1.50
4	B	1802	354	C2-N2	3.21	1.40	1.33
4	B	1802	354	C12-C11	3.20	1.44	1.39
3	B	1702	AMZ	P-OP2	3.16	1.60	1.50
4	A	1801	354	C4A-C8A	3.15	1.47	1.42
4	A	1801	354	C12-C11	3.12	1.44	1.39
4	B	1802	354	O-C	3.08	1.40	1.30
4	A	1801	354	C15-C16	3.05	1.44	1.38
3	B	1702	AMZ	C3-C	-3.02	1.45	1.53
4	B	1802	354	C16-C11	2.91	1.44	1.39
3	A	1701	AMZ	P-OP2	2.87	1.59	1.50
4	A	1801	354	C16-C11	2.82	1.44	1.39
4	A	1801	354	C5-C6	2.78	1.42	1.36
3	B	1702	AMZ	O-C1	2.73	1.44	1.41
4	A	1801	354	O-C	2.65	1.39	1.30
4	B	1802	354	C15-C16	2.49	1.43	1.38
4	A	1801	354	OE1-CD	-2.48	1.22	1.30
3	A	1701	AMZ	C2-C1	-2.47	1.50	1.53
4	B	1802	354	C5-C6	2.40	1.41	1.36

Continued on next page...

Continued from previous page...

Mol	Chain	Res	Type	Atoms	Z	Observed(Å)	Ideal(Å)
4	A	1801	354	C11-N10	-2.32	1.39	1.43
5	A	1901	XMP	C5'-C4'	2.31	1.58	1.51
4	B	1802	354	OE1-CD	-2.30	1.23	1.30
5	A	1901	XMP	C5-C6	-2.15	1.43	1.47

All (50) bond angle outliers are listed below:

Mol	Chain	Res	Type	Atoms	Z	Observed(°)	Ideal(°)
4	A	1801	354	O17-C17-C14	10.88	120.97	109.87
4	B	1802	354	O17-C17-C14	10.29	120.37	109.87
4	A	1801	354	CA-N-C17	8.26	130.01	115.06
4	B	1802	354	CA-N-C17	7.16	128.02	115.06
5	A	1901	XMP	C6-N1-C2	-7.03	121.33	126.88
4	A	1801	354	N1-C2-N3	-5.73	119.58	127.22
5	A	1901	XMP	O4'-C1'-C2'	-5.58	98.77	106.93
4	B	1802	354	N1-C2-N3	-5.48	119.91	127.22
5	A	1901	XMP	C4-N3-C2	-5.09	120.15	128.11
3	B	1702	AMZ	O5-C6-N2	-4.65	115.97	122.58
3	B	1702	AMZ	C3-C2-C1	4.24	107.37	100.98
4	B	1802	354	OT-C-CA	-3.98	109.20	122.26
4	A	1801	354	OT-C-CA	-3.91	109.41	122.26
3	A	1701	AMZ	C3-C2-C1	3.81	106.72	100.98
3	A	1701	AMZ	O5-C6-N2	-3.81	117.17	122.58
5	A	1901	XMP	N3-C2-N1	3.74	118.07	115.90
4	A	1801	354	O-C-CA	3.70	125.72	113.40
4	A	1801	354	C4-C4A-C8A	3.58	117.06	114.73
4	B	1802	354	C4-C4A-C8A	3.52	117.03	114.73
4	B	1802	354	O-C-CA	3.51	125.07	113.40
5	A	1901	XMP	C5-C6-N1	3.49	120.11	113.95
3	A	1701	AMZ	O-C1-C2	-3.13	102.35	106.93
4	B	1802	354	OE2-CD-CG	-3.02	113.38	123.08
5	A	1901	XMP	C3'-C2'-C1'	2.99	105.48	100.98
4	A	1801	354	C2-N3-C4	2.96	123.91	116.43
4	A	1801	354	O4-C4-C4A	2.95	123.36	116.72
4	A	1801	354	OE2-CD-CG	-2.94	113.63	123.08
5	A	1901	XMP	O3'-C3'-C2'	2.90	121.20	111.82
4	B	1802	354	OE1-CD-CG	2.88	123.29	114.03
4	B	1802	354	O4-C4-C4A	2.83	123.09	116.72
4	B	1802	354	C2-N3-C4	2.82	123.55	116.43
3	B	1702	AMZ	C3A-C6-N2	2.80	120.18	115.75
3	B	1702	AMZ	OP1-P-O3	2.78	114.13	106.73
4	B	1802	354	C4A-C8A-N1	-2.77	119.87	122.81

Continued on next page...

Continued from previous page...

Mol	Chain	Res	Type	Atoms	Z	Observed(°)	Ideal(°)
4	A	1801	354	C4A-C8A-N1	-2.74	119.90	122.81
4	B	1802	354	CG-CB-CA	2.72	118.25	113.16
5	A	1901	XMP	O3'-C3'-C4'	-2.69	103.27	111.05
4	A	1801	354	OE1-CD-CG	2.68	122.65	114.03
3	A	1701	AMZ	C3A-C6-N2	2.65	119.93	115.75
5	A	1901	XMP	O6-C6-C5	-2.63	119.23	124.37
4	A	1801	354	N2-C2-N1	2.56	121.97	117.79
3	B	1702	AMZ	O-C1-C2	-2.49	103.28	106.93
3	A	1701	AMZ	OP1-P-O3	2.38	113.07	106.73
5	A	1901	XMP	O2P-P-O5'	2.34	112.97	106.73
4	A	1801	354	CG-CB-CA	2.25	117.37	113.16
4	B	1802	354	N2-C2-N1	2.19	121.37	117.79
4	A	1801	354	C11-N10-S9	2.15	129.95	123.22
4	A	1801	354	C4A-C4-N3	-2.05	118.73	123.84
3	B	1702	AMZ	P-O3-C4	-2.05	112.65	118.30
4	B	1802	354	C4A-C4-N3	-2.03	118.79	123.84

All (2) chirality outliers are listed below:

Mol	Chain	Res	Type	Atom
4	A	1801	354	C17
4	B	1802	354	C17

All (12) torsion outliers are listed below:

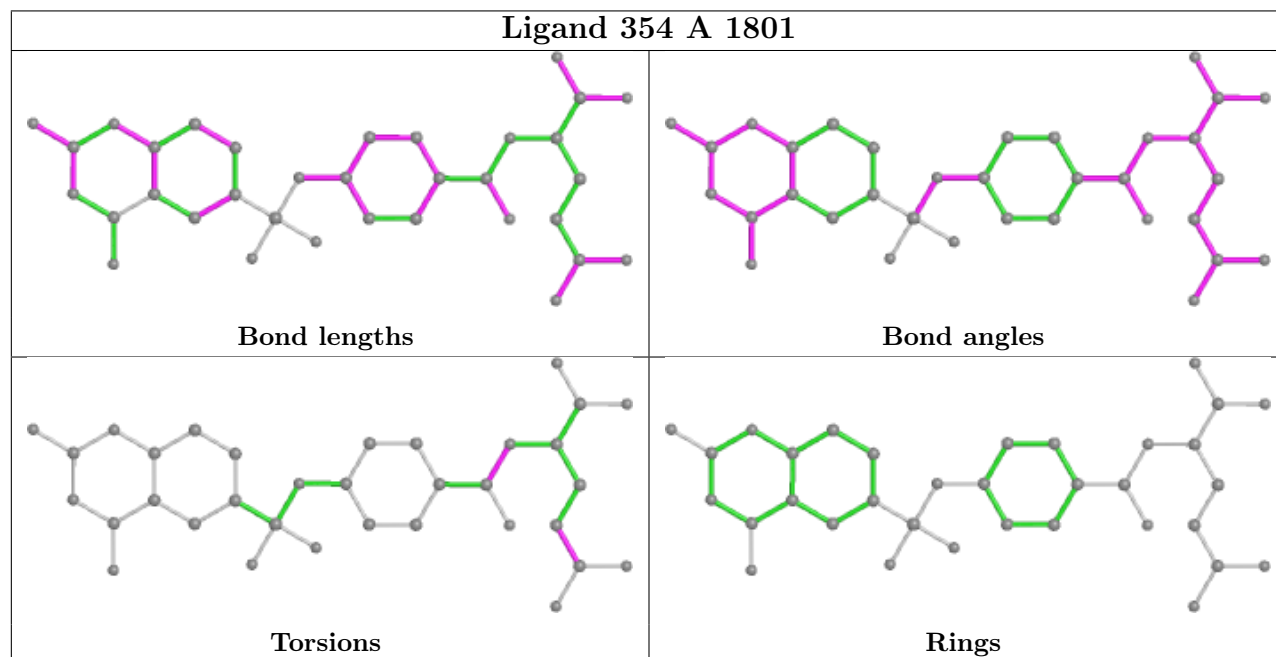
Mol	Chain	Res	Type	Atoms
4	A	1801	354	C14-C17-N-CA
4	B	1802	354	C14-C17-N-CA
5	A	1901	XMP	C5'-O5'-P-O1P
5	A	1901	XMP	C5'-O5'-P-O2P
5	A	1901	XMP	C5'-O5'-P-O3P
5	A	1901	XMP	O4'-C4'-C5'-O5'
5	A	1901	XMP	C3'-C4'-C5'-O5'
4	B	1802	354	C-CA-CB-CG
4	A	1801	354	OE2-CD-CG-CB
4	A	1801	354	OE1-CD-CG-CB
4	B	1802	354	OE2-CD-CG-CB
4	B	1802	354	OE1-CD-CG-CB

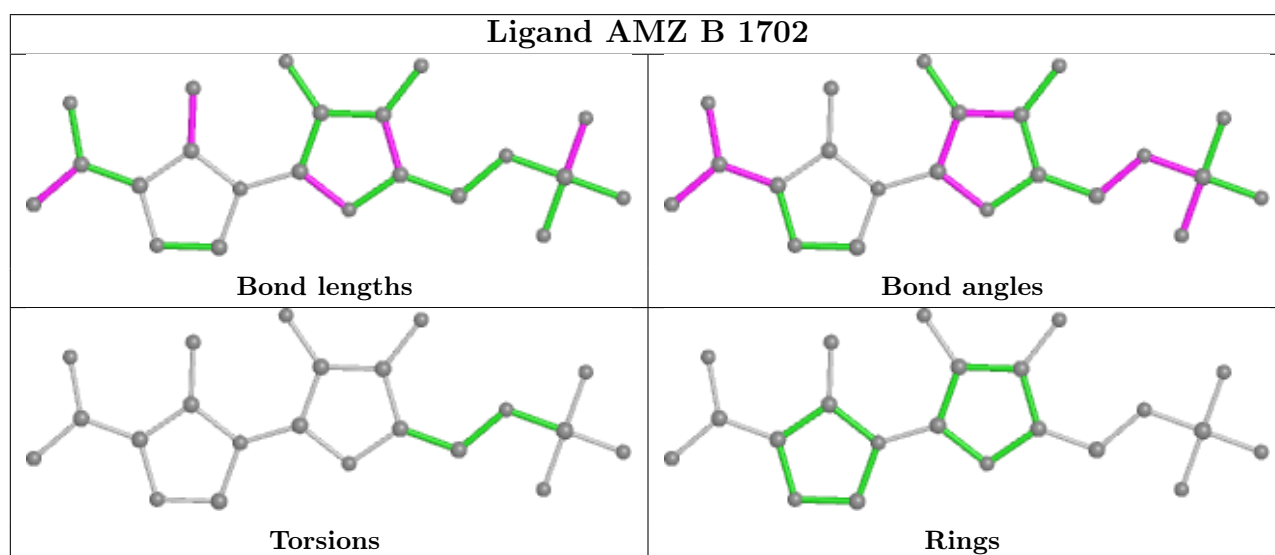
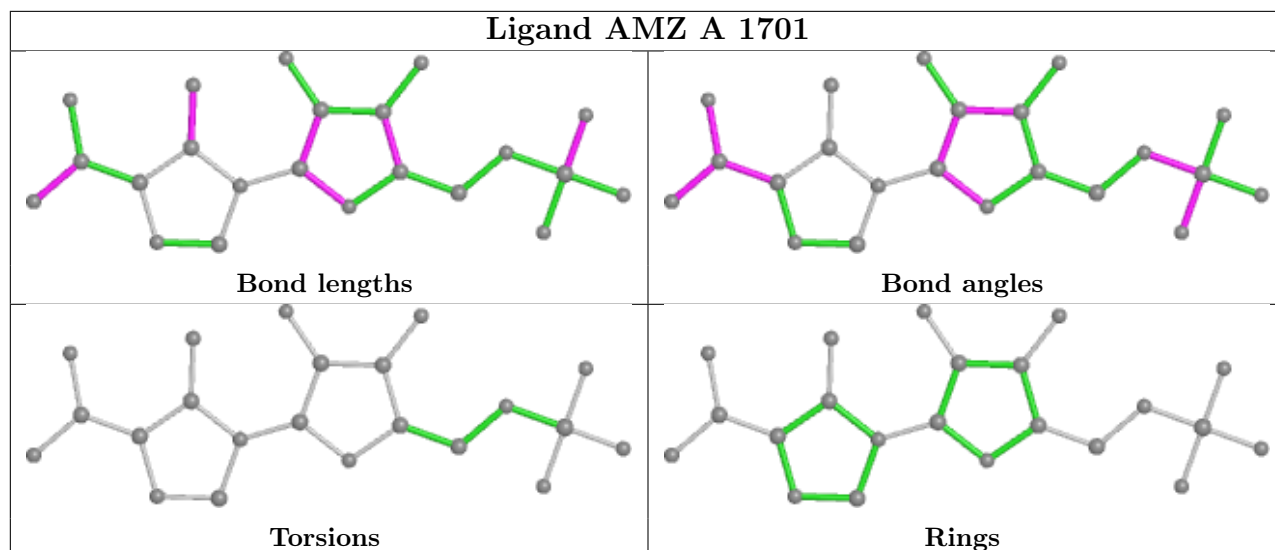
There are no ring outliers.

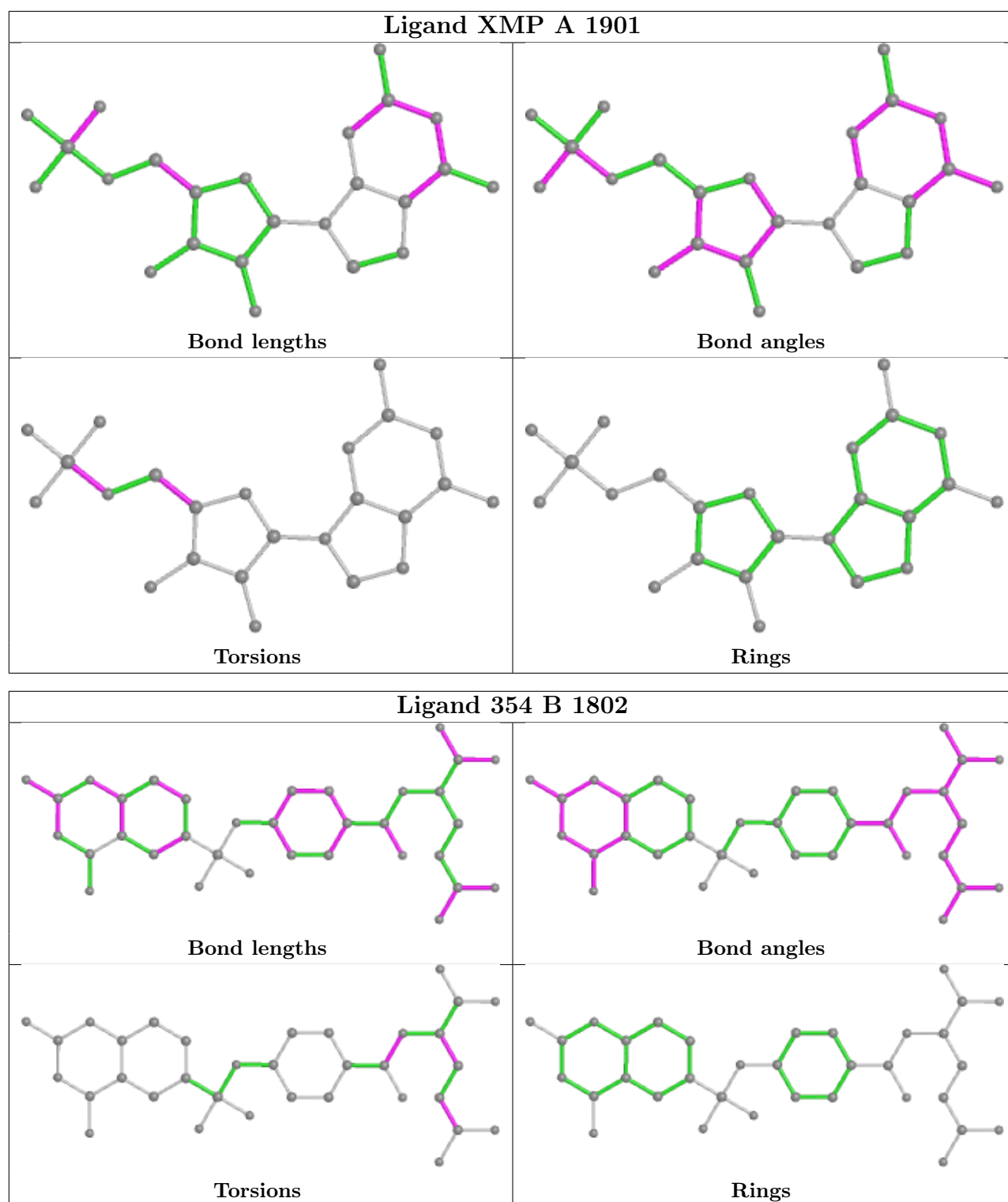
4 monomers are involved in 9 short contacts:

Mol	Chain	Res	Type	Clashes	Symm-Clashes
4	A	1801	354	4	0
3	B	1702	AMZ	1	0
5	A	1901	XMP	2	0
4	B	1802	354	2	0

The following is a two-dimensional graphical depiction of Mogul quality analysis of bond lengths, bond angles, torsion angles, and ring geometry for all instances of the Ligand of Interest. In addition, ligands with molecular weight > 250 and outliers as shown on the validation Tables will also be included. For torsion angles, if less than 5% of the Mogul distribution of torsion angles is within 10 degrees of the torsion angle in question, then that torsion angle is considered an outlier. Any bond that is central to one or more torsion angles identified as an outlier by Mogul will be highlighted in the graph. For rings, the root-mean-square deviation (RMSD) between the ring in question and similar rings identified by Mogul is calculated over all ring torsion angles. If the average RMSD is greater than 60 degrees and the minimal RMSD between the ring in question and any Mogul-identified rings is also greater than 60 degrees, then that ring is considered an outlier. The outliers are highlighted in purple. The color gray indicates Mogul did not find sufficient equivalents in the CSD to analyse the geometry.







5.7 Other polymers [i](#)

There are no such residues in this entry.

5.8 Polymer linkage issues

There are no chain breaks in this entry.

6 Fit of model and data [i](#)

6.1 Protein, DNA and RNA chains [i](#)

In the following table, the column labelled ‘#RSRZ > 2’ contains the number (and percentage) of RSRZ outliers, followed by percent RSRZ outliers for the chain as percentile scores relative to all X-ray entries and entries of similar resolution. The OWAB column contains the minimum, median, 95th percentile and maximum values of the occupancy-weighted average B-factor per residue. The column labelled ‘Q < 0.9’ lists the number of (and percentage) of residues with an average occupancy less than 0.9.

Mol	Chain	Analysed	<RSRZ>	#RSRZ>2	OWAB(Å ²)	Q<0.9
1	A	589/592 (99%)	-0.24	9 (1%) 73 79	10, 27, 54, 67	0
1	B	588/592 (99%)	-0.13	5 (0%) 84 88	11, 29, 50, 70	0
All	All	1177/1184 (99%)	-0.18	14 (1%) 79 84	10, 28, 52, 70	0

All (14) RSRZ outliers are listed below:

Mol	Chain	Res	Type	RSRZ
1	A	478	PHE	3.1
1	B	294	LYS	3.0
1	B	113	PRO	3.0
1	A	515	VAL	2.9
1	A	511	LEU	2.7
1	A	4	GLY	2.5
1	B	114	GLY	2.5
1	A	506	ILE	2.5
1	A	161	SER	2.2
1	A	409	ASP	2.2
1	B	131	LEU	2.1
1	A	85	ASN	2.1
1	B	89	ALA	2.1
1	A	512	PHE	2.0

6.2 Non-standard residues in protein, DNA, RNA chains [i](#)

There are no non-standard protein/DNA/RNA residues in this entry.

6.3 Carbohydrates [i](#)

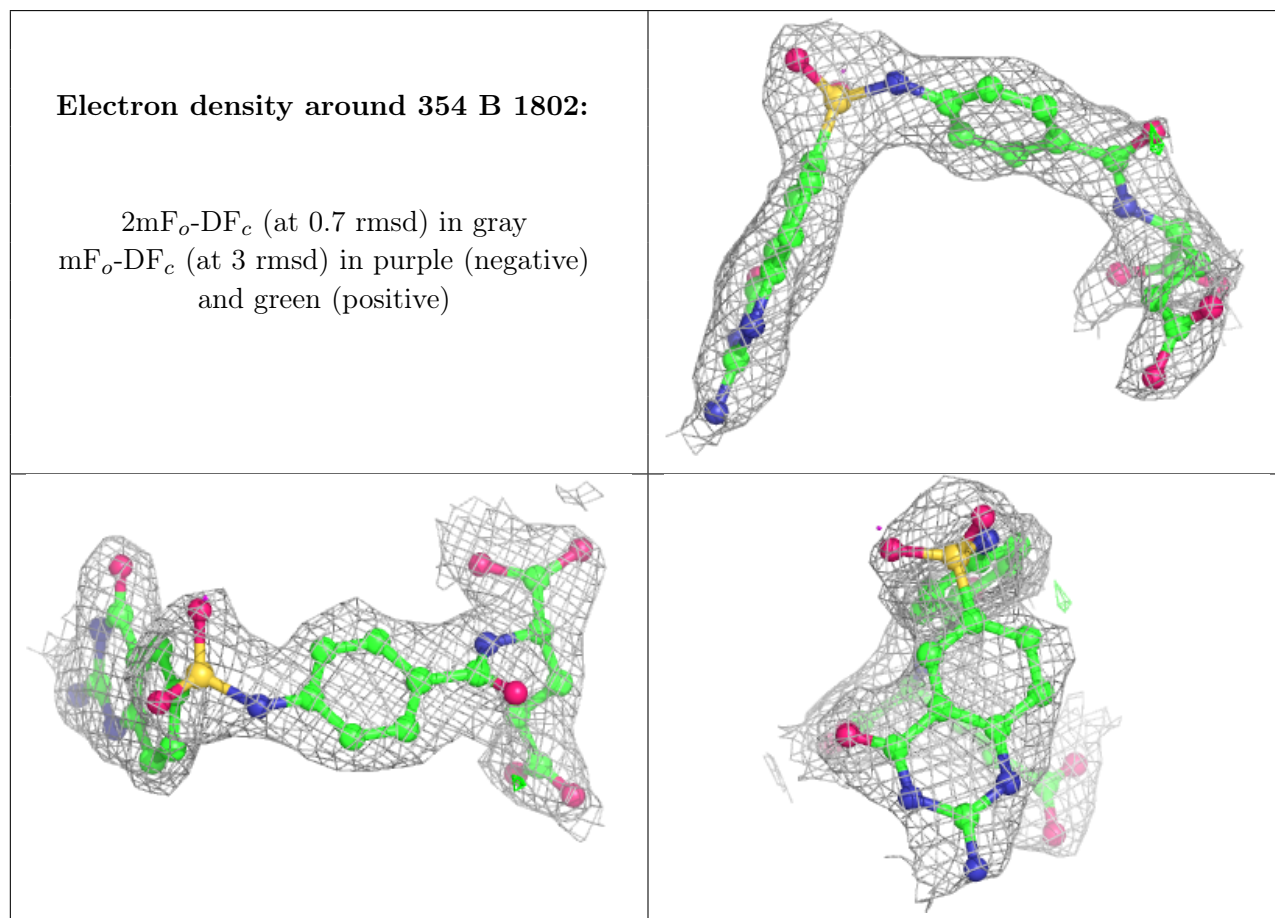
There are no monosaccharides in this entry.

6.4 Ligands [i](#)

In the following table, the Atoms column lists the number of modelled atoms in the group and the number defined in the chemical component dictionary. The B-factors column lists the minimum, median, 95th percentile and maximum values of B factors of atoms in the group. The column labelled 'Q< 0.9' lists the number of atoms with occupancy less than 0.9.

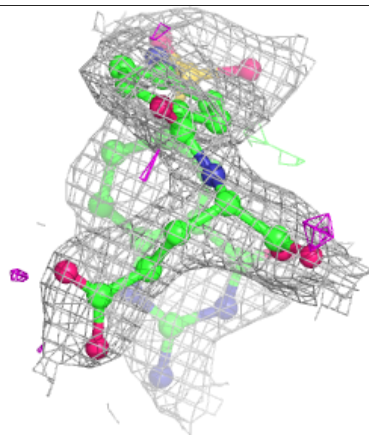
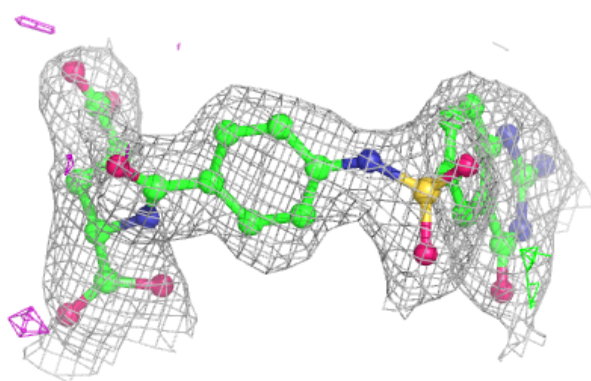
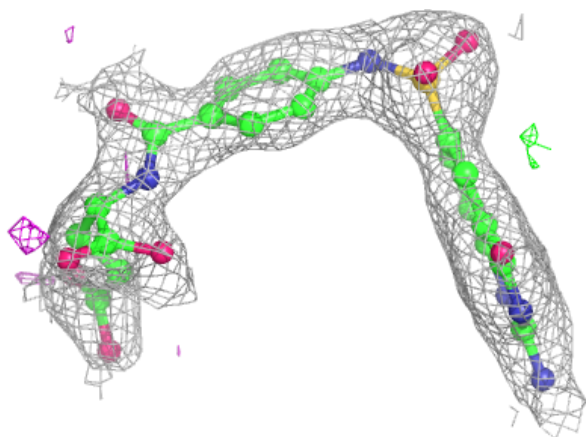
Mol	Type	Chain	Res	Atoms	RSCC	RSR	B-factors(Å ²)	Q<0.9
4	354	B	1802	34/34	0.93	0.18	32,40,48,50	0
4	354	A	1801	34/34	0.95	0.15	20,26,37,38	0
5	XMP	A	1901	24/24	0.95	0.12	30,34,39,40	0
3	AMZ	B	1702	22/22	0.96	0.13	27,31,37,38	0
3	AMZ	A	1701	22/22	0.98	0.13	15,17,21,22	0
2	K	B	1002	1/1	0.99	0.08	19,19,19,19	0
2	K	A	1001	1/1	1.00	0.08	19,19,19,19	0

The following is a graphical depiction of the model fit to experimental electron density of all instances of the Ligand of Interest. In addition, ligands with molecular weight > 250 and outliers as shown on the geometry validation Tables will also be included. Each fit is shown from different orientation to approximate a three-dimensional view.



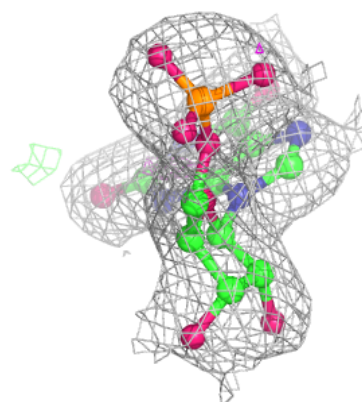
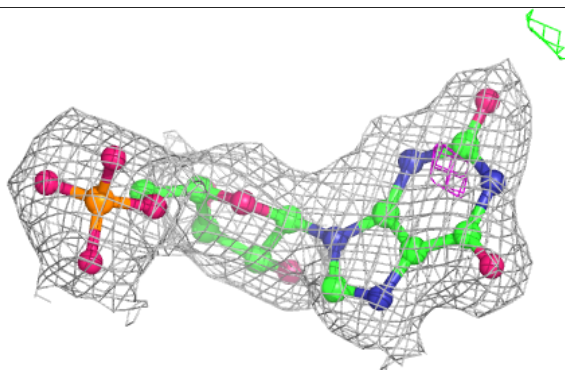
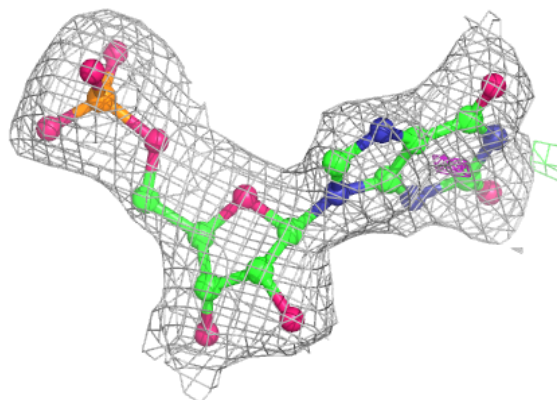
Electron density around 354 A 1801:

$2mF_o-DF_c$ (at 0.7 rmsd) in gray
 mF_o-DF_c (at 3 rmsd) in purple (negative)
and green (positive)



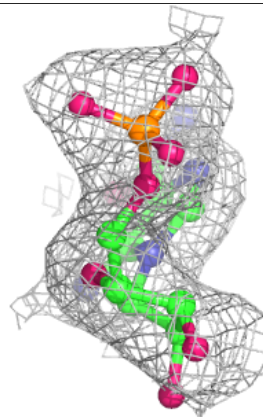
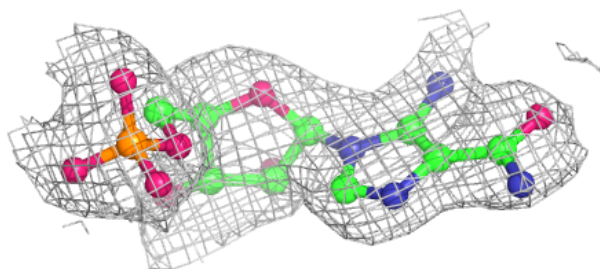
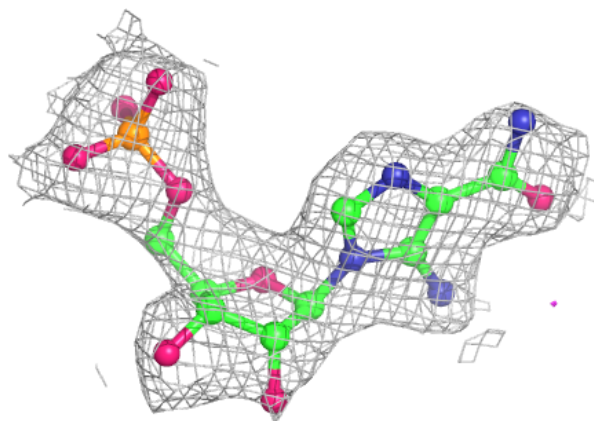
Electron density around XMP A 1901:

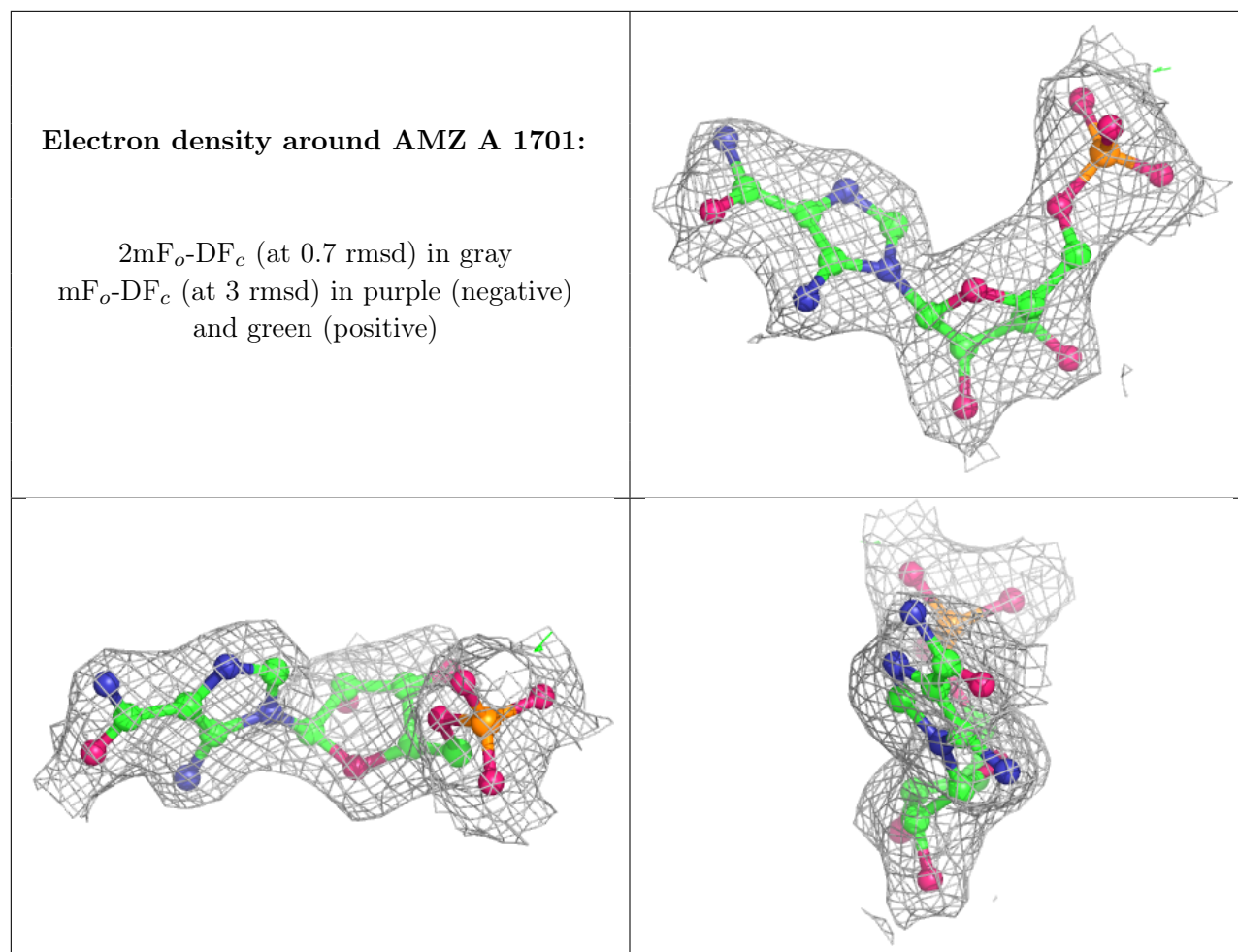
$2mF_o-DF_c$ (at 0.7 rmsd) in gray
 mF_o-DF_c (at 3 rmsd) in purple (negative)
and green (positive)



Electron density around AMZ B 1702:

$2mF_o-DF_c$ (at 0.7 rmsd) in gray
 mF_o-DF_c (at 3 rmsd) in purple (negative)
and green (positive)





6.5 Other polymers [i](#)

There are no such residues in this entry.