



# Full wwPDB X-ray Structure Validation Report ⓘ

May 10, 2022 – 01:11 pm BST

PDB ID : 7P4H  
Title : Crystal Structure of Monoamine Oxidase B in complex with inhibitor (+)-2  
Authors : Iacovino, L.G.; Binda, C.; Pisani, L.  
Deposited on : 2021-07-11  
Resolution : 2.10 Å(reported)

This is a Full wwPDB X-ray Structure Validation Report for a publicly released PDB entry.

We welcome your comments at [validation@mail.wwpdb.org](mailto:validation@mail.wwpdb.org)

A user guide is available at

<https://www.wwpdb.org/validation/2017/XrayValidationReportHelp>

with specific help available everywhere you see the ⓘ symbol.

---

The following versions of software and data (see [references ⓘ](#)) were used in the production of this report:

MolProbity : 4.02b-467  
Mogul : 1.8.4, CSD as541be (2020)  
Xtriage (Phenix) : 1.13  
EDS : 2.28.1  
buster-report : 1.1.7 (2018)  
Percentile statistics : 20191225.v01 (using entries in the PDB archive December 25th 2019)  
Refmac : 5.8.0267  
CCP4 : 7.1.010 (Gargrove)  
Ideal geometry (proteins) : Engh & Huber (2001)  
Ideal geometry (DNA, RNA) : Parkinson et al. (1996)  
Validation Pipeline (wwPDB-VP) : 2.28.1

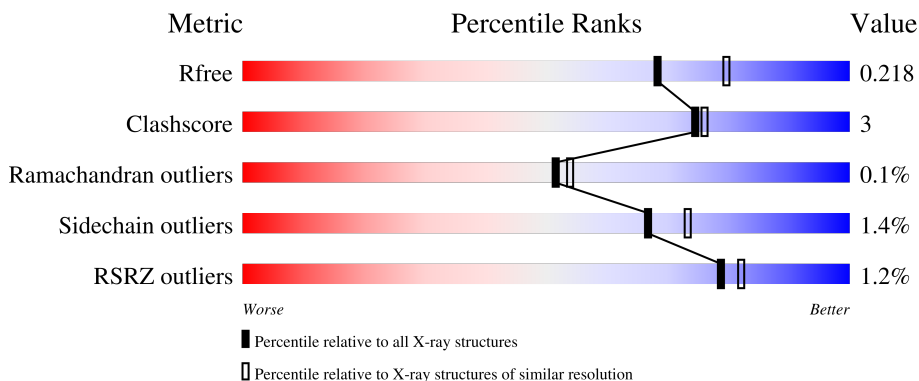
# 1 Overall quality at a glance

The following experimental techniques were used to determine the structure:

*X-RAY DIFFRACTION*

The reported resolution of this entry is 2.10 Å.

Percentile scores (ranging between 0-100) for global validation metrics of the entry are shown in the following graphic. The table shows the number of entries on which the scores are based.



Metric	Whole archive (#Entries)	Similar resolution (#Entries, resolution range(Å))
$R_{free}$	130704	5197 (2.10-2.10)
Clashscore	141614	5710 (2.10-2.10)
Ramachandran outliers	138981	5647 (2.10-2.10)
Sidechain outliers	138945	5648 (2.10-2.10)
RSRZ outliers	127900	5083 (2.10-2.10)

The table below summarises the geometric issues observed across the polymeric chains and their fit to the electron density. The red, orange, yellow and green segments of the lower bar indicate the fraction of residues that contain outliers for  $\geq 3$ , 2, 1 and 0 types of geometric quality criteria respectively. A grey segment represents the fraction of residues that are not modelled. The numeric value for each fraction is indicated below the corresponding segment, with a dot representing fractions  $\leq 5\%$ . The upper red bar (where present) indicates the fraction of residues that have poor fit to the electron density. The numeric value is given above the bar.

Mol	Chain	Length	Quality of chain
1	A	520	
1	B	520	

## 2 Entry composition [i](#)

There are 5 unique types of molecules in this entry. The entry contains 8592 atoms, of which 0 are hydrogens and 0 are deuteriums.

In the tables below, the ZeroOcc column contains the number of atoms modelled with zero occupancy, the AltConf column contains the number of residues with at least one atom in alternate conformation and the Trace column contains the number of residues modelled with at most 2 atoms.

- Molecule 1 is a protein called Amine oxidase [flavin-containing] B.

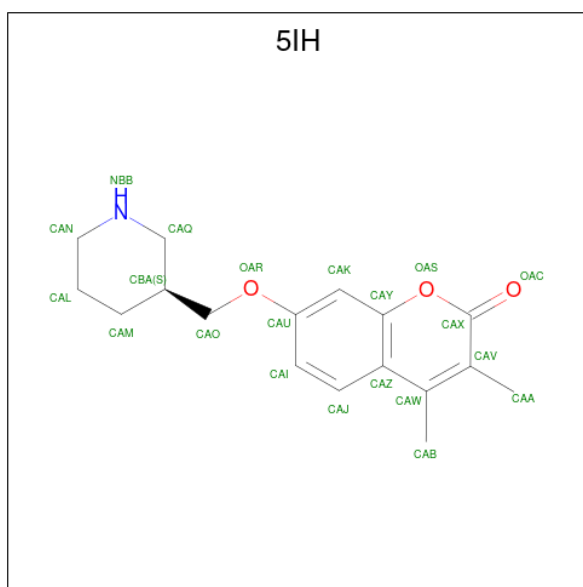
Mol	Chain	Residues	Atoms					ZeroOcc	AltConf	Trace
			Total	C	N	O	S			
1	A	499	Total 3974	C 2541	N 681	O 728	S 24	0	0	0
1	B	494	Total 3940	C 2519	N 676	O 721	S 24	0	0	0

- Molecule 2 is FLAVIN-ADENINE DINUCLEOTIDE (three-letter code: FAD) (formula:  $C_{27}H_{33}N_9O_{15}P_2$ ).



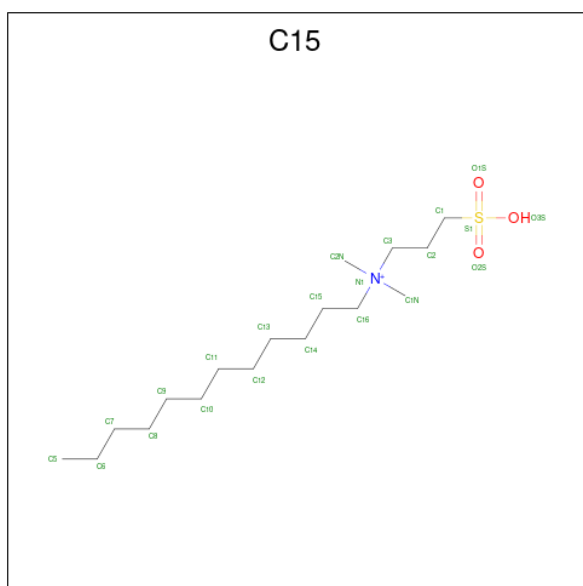
Mol	Chain	Residues	Atoms					ZeroOcc	AltConf
			Total	C	N	O	P		
2	A	1	Total 53	C 27	N 9	O 15	P 2	0	0
2	B	1	Total 53	C 27	N 9	O 15	P 2	0	0

- Molecule 3 is 3,4-dimethyl-7-[[3 {S}-piperidin-3-yl]methoxy]chromen-2-one (three-letter code: 5IH) (formula:  $C_{17}H_{21}NO_3$ ) (labeled as "Ligand of Interest" by depositor).



Mol	Chain	Residues	Atoms				ZeroOcc	AltConf
			Total	C	N	O		
3	A	1	21	17	1	3	0	0
3	B	1	21	17	1	3	0	0

- Molecule 4 is N-DODECYL-N,N-DIMETHYL-3-AMMONIO-1-PROPANESULFONATE (three-letter code: C15) (formula:  $C_{17}H_{38}NO_3S$ ).



Mol	Chain	Residues	Atoms					ZeroOcc	AltConf
			Total	C	N	O	S		
4	A	1	14	9	1	3	1	0	0

*Continued on next page...*

*Continued from previous page...*

Mol	Chain	Residues	Atoms					ZeroOcc	AltConf
			Total	C	N	O	S		
4	B	1	11	6	1	3	1	0	0

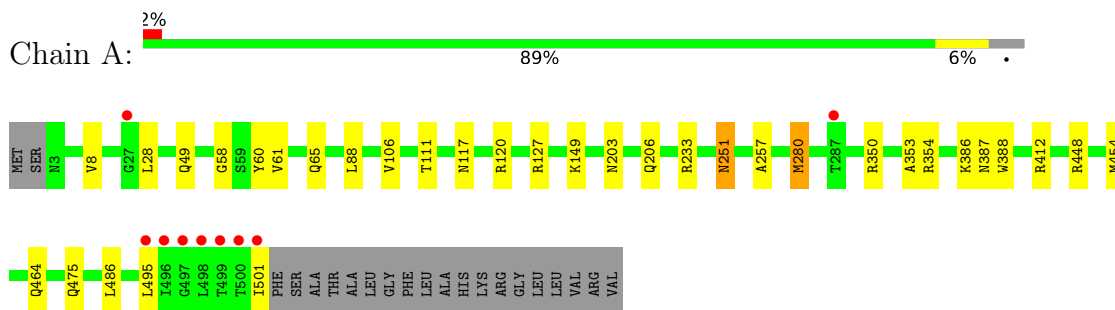
- Molecule 5 is water.

Mol	Chain	Residues	Atoms		ZeroOcc	AltConf
5	A	220	Total	O	0	0
			220	220		
5	B	285	Total	O	0	0
			285	285		

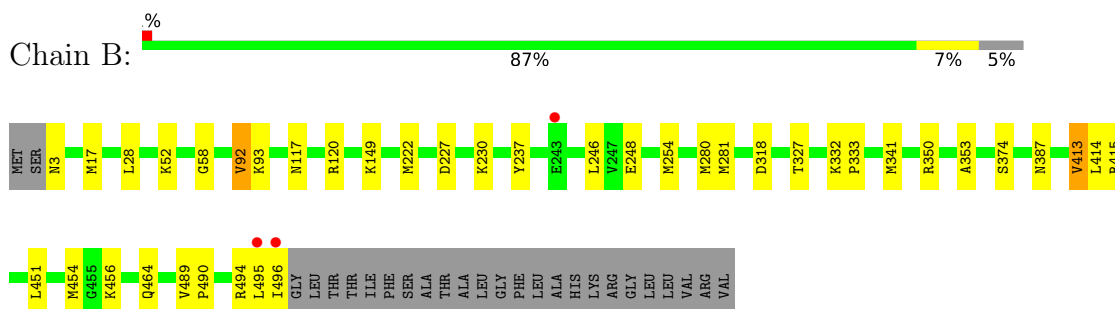
### 3 Residue-property plots [i](#)

These plots are drawn for all protein, RNA, DNA and oligosaccharide chains in the entry. The first graphic for a chain summarises the proportions of the various outlier classes displayed in the second graphic. The second graphic shows the sequence view annotated by issues in geometry and electron density. Residues are color-coded according to the number of geometric quality criteria for which they contain at least one outlier: green = 0, yellow = 1, orange = 2 and red = 3 or more. A red dot above a residue indicates a poor fit to the electron density ( $RSRZ > 2$ ). Stretches of 2 or more consecutive residues without any outlier are shown as a green connector. Residues present in the sample, but not in the model, are shown in grey.

- Molecule 1: Amine oxidase [flavin-containing] B



- Molecule 1: Amine oxidase [flavin-containing] B



## 4 Data and refinement statistics i

Property	Value	Source
Space group	C 2 2 2	Depositor
Cell constants a, b, c, $\alpha$ , $\beta$ , $\gamma$	131.83Å 222.77Å 86.29Å 90.00° 90.00° 90.00°	Depositor
Resolution (Å)	47.45 – 2.10 47.40 – 2.10	Depositor EDS
% Data completeness (in resolution range)	97.6 (47.45-2.10) 97.6 (47.40-2.10)	Depositor EDS
$R_{merge}$	(Not available)	Depositor
$R_{sym}$	(Not available)	Depositor
$\langle I/\sigma(I) \rangle$ <sup>1</sup>	2.00 (at 2.10Å)	Xtrriage
Refinement program	REFMAC 5.8.0253	Depositor
R, $R_{free}$	0.168 , 0.213 0.175 , 0.218	Depositor DCC
$R_{free}$ test set	1850 reflections (2.55%)	wwPDB-VP
Wilson B-factor (Å <sup>2</sup> )	25.1	Xtrriage
Anisotropy	0.073	Xtrriage
Bulk solvent $k_{sol}$ (e/Å <sup>3</sup> ), $B_{sol}$ (Å <sup>2</sup> )	(Not available) , (Not available)	EDS
L-test for twinning <sup>2</sup>	$\langle  L  \rangle = 0.48$ , $\langle L^2 \rangle = 0.31$	Xtrriage
Estimated twinning fraction	0.013 for 1/2*h-1/2*k,-3/2*h-1/2*k,-l 0.023 for 1/2*h+1/2*k,3/2*h-1/2*k,-l	Xtrriage
$F_o, F_c$ correlation	0.95	EDS
Total number of atoms	8592	wwPDB-VP
Average B, all atoms (Å <sup>2</sup> )	28.0	wwPDB-VP

Xtrriage's analysis on translational NCS is as follows: *The largest off-origin peak in the Patterson function is 3.47% of the height of the origin peak. No significant pseudotranslation is detected.*

<sup>1</sup>Intensities estimated from amplitudes.

<sup>2</sup>Theoretical values of  $\langle |L| \rangle$ ,  $\langle L^2 \rangle$  for acentric reflections are 0.5, 0.333 respectively for untwinned datasets, and 0.375, 0.2 for perfectly twinned datasets.

## 5 Model quality [i](#)

### 5.1 Standard geometry [i](#)

Bond lengths and bond angles in the following residue types are not validated in this section: FAD, 5IH, C15

The Z score for a bond length (or angle) is the number of standard deviations the observed value is removed from the expected value. A bond length (or angle) with  $|Z| > 5$  is considered an outlier worth inspection. RMSZ is the root-mean-square of all Z scores of the bond lengths (or angles).

Mol	Chain	Bond lengths		Bond angles	
		RMSZ	# Z  >5	RMSZ	# Z  >5
1	A	0.69	0/4071	0.82	3/5526 (0.1%)
1	B	0.69	0/4037	0.83	1/5479 (0.0%)
All	All	0.69	0/8108	0.82	4/11005 (0.0%)

There are no bond length outliers.

All (4) bond angle outliers are listed below:

Mol	Chain	Res	Type	Atoms	Z	Observed(°)	Ideal(°)
1	A	448	ARG	NE-CZ-NH1	6.12	123.36	120.30
1	A	448	ARG	NE-CZ-NH2	-5.58	117.51	120.30
1	B	415	ARG	CG-CD-NE	-5.35	100.57	111.80
1	A	127	ARG	CG-CD-NE	-5.04	101.22	111.80

There are no chirality outliers.

There are no planarity outliers.

### 5.2 Too-close contacts [i](#)

In the following table, the Non-H and H(model) columns list the number of non-hydrogen atoms and hydrogen atoms in the chain respectively. The H(added) column lists the number of hydrogen atoms added and optimized by MolProbity. The Clashes column lists the number of clashes within the asymmetric unit, whereas Symm-Clashes lists symmetry-related clashes.

Mol	Chain	Non-H	H(model)	H(added)	Clashes	Symm-Clashes
1	A	3974	0	3976	28	1
1	B	3940	0	3937	32	0
2	A	53	0	29	1	0
2	B	53	0	29	1	0
3	A	21	0	0	0	0

*Continued on next page...*



*Continued from previous page...*

Mol	Chain	Non-H	H(model)	H(added)	Clashes	Symm-Clashes
3	B	21	0	0	0	0
4	A	14	0	19	0	0
4	B	11	0	12	0	0
5	A	220	0	0	3	0
5	B	285	0	0	4	0
All	All	8592	0	8002	51	1

The all-atom clashscore is defined as the number of clashes found per 1000 atoms (including hydrogen atoms). The all-atom clashscore for this structure is 3.

All (51) close contacts within the same asymmetric unit are listed below, sorted by their clash magnitude.

Atom-1	Atom-2	Interatomic distance (Å)	Clash overlap (Å)
1:B:494:ARG:NH2	5:B:701:HOH:O	1.74	1.19
1:B:117:ASN:HD22	1:B:120:ARG:HH21	1.22	0.85
1:A:280:MET:HE1	1:B:353:ALA:HB1	1.66	0.77
1:A:353:ALA:HB1	1:B:280:MET:HE1	1.68	0.76
1:B:464:GLN:NE2	5:B:702:HOH:O	2.23	0.69
1:A:117:ASN:HD22	1:A:120:ARG:HH21	1.40	0.68
1:A:149:LYS:HD3	5:B:841:HOH:O	1.96	0.64
1:A:251:ASN:HD22	1:A:251:ASN:H	1.44	0.64
1:B:246:LEU:HB3	1:B:254:MET:HE1	1.83	0.60
1:B:451:LEU:HD23	1:B:454:MET:HE2	1.84	0.59
1:A:387:ASN:ND2	1:B:280:MET:CE	2.66	0.58
1:B:28:LEU:HD21	1:B:456:LYS:HE3	1.85	0.58
1:B:117:ASN:ND2	1:B:120:ARG:HH21	1.98	0.58
1:B:117:ASN:HD22	1:B:120:ARG:NH2	1.95	0.58
1:A:28:LEU:HD21	1:A:454:MET:HE1	1.88	0.56
1:B:281:MET:HB3	1:B:413:VAL:HG11	1.87	0.56
1:A:117:ASN:HD22	1:A:120:ARG:NH2	2.05	0.55
1:B:93:LYS:HE2	1:B:93:LYS:HA	1.89	0.53
1:A:387:ASN:ND2	1:B:280:MET:HE1	2.23	0.52
1:B:92:VAL:HB	1:B:318:ASP:OD2	2.09	0.52
1:A:251:ASN:H	1:A:251:ASN:ND2	2.07	0.52
5:A:778:HOH:O	1:B:149:LYS:HD3	2.09	0.52
1:A:280:MET:HE1	1:B:353:ALA:CB	2.39	0.50
1:A:464:GLN:OE1	5:A:701:HOH:O	2.19	0.50
1:A:353:ALA:CB	1:B:280:MET:HE1	2.40	0.49
1:B:3:ASN:ND2	5:B:708:HOH:O	2.46	0.48
1:A:387:ASN:HD21	1:B:280:MET:CE	2.27	0.47
1:A:88:LEU:HD12	1:A:88:LEU:N	2.30	0.47

*Continued on next page...*

Continued from previous page...

Atom-1	Atom-2	Interatomic distance (Å)	Clash overlap (Å)
1:A:280:MET:HE1	1:B:387:ASN:ND2	2.30	0.47
1:A:106:VAL:HG11	1:A:111:THR:HG22	1.97	0.46
1:B:17:MET:HE2	1:B:222:MET:HB2	1.97	0.46
1:B:28:LEU:HD11	1:B:454:MET:CE	2.45	0.46
1:A:280:MET:CE	1:B:387:ASN:ND2	2.79	0.46
1:B:454:MET:HE3	1:B:454:MET:HB2	1.57	0.46
1:A:117:ASN:ND2	1:A:120:ARG:HH21	2.11	0.44
1:B:327:THR:HA	1:B:341:MET:O	2.17	0.44
1:B:332:LYS:HB3	1:B:333:PRO:HD2	1.97	0.44
1:A:61:VAL:HA	1:A:65:GLN:OE1	2.17	0.44
1:B:495:LEU:O	1:B:496:ILE:HG13	2.18	0.43
1:A:58:GLY:HA2	2:A:601:FAD:C4X	2.48	0.43
1:B:58:GLY:HA2	2:B:601:FAD:C4X	2.49	0.43
1:A:233:ARG:HG3	1:A:251:ASN:HD21	1.84	0.43
1:A:49:GLN:HB3	5:A:915:HOH:O	2.18	0.43
1:A:203:ASN:ND2	1:A:475:GLN:HB2	2.34	0.43
1:B:227:ASP:O	1:B:230:LYS:NZ	2.48	0.42
1:A:8:VAL:HG23	1:A:257:ALA:HB2	2.02	0.42
1:A:60:TYR:HB3	1:A:206:GLN:HA	2.01	0.41
1:B:237:TYR:HB3	1:B:248:GLU:HB3	2.03	0.41
1:A:486:LEU:HD23	1:A:486:LEU:HA	1.95	0.40
1:B:489:VAL:N	1:B:490:PRO:HD2	2.37	0.40
1:A:386:LYS:HD3	1:A:388:TRP:CZ2	2.57	0.40

All (1) symmetry-related close contacts are listed below. The label for Atom-2 includes the symmetry operator and encoded unit-cell translations to be applied.

Atom-1	Atom-2	Interatomic distance (Å)	Clash overlap (Å)
1:A:475:GLN:NE2	1:A:475:GLN:NE2[3_656]	1.97	0.23

## 5.3 Torsion angles [i](#)

### 5.3.1 Protein backbone [i](#)

In the following table, the Percentiles column shows the percent Ramachandran outliers of the chain as a percentile score with respect to all X-ray entries followed by that with respect to entries of similar resolution.

The Analysed column shows the number of residues for which the backbone conformation was analysed, and the total number of residues.

Mol	Chain	Analysed	Favoured	Allowed	Outliers	Percentiles	
1	A	497/520 (96%)	482 (97%)	15 (3%)	0	100	100
1	B	492/520 (95%)	476 (97%)	15 (3%)	1 (0%)	47	49
All	All	989/1040 (95%)	958 (97%)	30 (3%)	1 (0%)	51	54

All (1) Ramachandran outliers are listed below:

Mol	Chain	Res	Type
1	B	52	LYS

### 5.3.2 Protein sidechains [i](#)

In the following table, the Percentiles column shows the percent sidechain outliers of the chain as a percentile score with respect to all X-ray entries followed by that with respect to entries of similar resolution.

The Analysed column shows the number of residues for which the sidechain conformation was analysed, and the total number of residues.

Mol	Chain	Analysed	Rotameric	Outliers	Percentiles	
1	A	428/444 (96%)	421 (98%)	7 (2%)	62	69
1	B	424/444 (96%)	419 (99%)	5 (1%)	71	77
All	All	852/888 (96%)	840 (99%)	12 (1%)	67	73

All (12) residues with a non-rotameric sidechain are listed below:

Mol	Chain	Res	Type
1	A	251	ASN
1	A	280	MET
1	A	350	ARG
1	A	354	ARG
1	A	412	ARG
1	A	495	LEU
1	A	501	ILE
1	B	92	VAL
1	B	350	ARG
1	B	374	SER
1	B	413	VAL
1	B	414	LEU

Sometimes sidechains can be flipped to improve hydrogen bonding and reduce clashes. All (10) such sidechains are listed below:

Mol	Chain	Res	Type
1	A	116	ASN
1	A	117	ASN
1	A	251	ASN
1	A	387	ASN
1	A	452	HIS
1	A	464	GLN
1	A	485	HIS
1	B	117	ASN
1	B	251	ASN
1	B	416	GLN

### 5.3.3 RNA [i](#)

There are no RNA molecules in this entry.

## 5.4 Non-standard residues in protein, DNA, RNA chains [i](#)

There are no non-standard protein/DNA/RNA residues in this entry.

## 5.5 Carbohydrates [i](#)

There are no monosaccharides in this entry.

## 5.6 Ligand geometry [i](#)

6 ligands are modelled in this entry.

In the following table, the Counts columns list the number of bonds (or angles) for which Mogul statistics could be retrieved, the number of bonds (or angles) that are observed in the model and the number of bonds (or angles) that are defined in the Chemical Component Dictionary. The Link column lists molecule types, if any, to which the group is linked. The Z score for a bond length (or angle) is the number of standard deviations the observed value is removed from the expected value. A bond length (or angle) with  $|Z| > 2$  is considered an outlier worth inspection. RMSZ is the root-mean-square of all Z scores of the bond lengths (or angles).

Mol	Type	Chain	Res	Link	Bond lengths			Bond angles		
					Counts	RMSZ	# Z  > 2	Counts	RMSZ	# Z  > 2
2	FAD	A	601	1	51,58,58	0.92	1 (1%)	60,89,89	2.03	14 (23%)
3	5IH	B	602	-	21,23,23	1.64	2 (9%)	27,32,32	1.40	5 (18%)
3	5IH	A	602	-	21,23,23	2.05	5 (23%)	27,32,32	1.92	9 (33%)
4	C15	B	603	-	10,10,21	1.33	1 (10%)	14,15,26	1.26	2 (14%)

Mol	Type	Chain	Res	Link	Bond lengths			Bond angles		
					Counts	RMSZ	# Z  > 2	Counts	RMSZ	# Z  > 2
4	C15	A	603	-	13,13,21	0.87	1 (7%)	17,18,26	0.74	0
2	FAD	B	601	1	51,58,58	1.21	6 (11%)	60,89,89	1.59	9 (15%)

In the following table, the Chirals column lists the number of chiral outliers, the number of chiral centers analysed, the number of these observed in the model and the number defined in the Chemical Component Dictionary. Similar counts are reported in the Torsion and Rings columns. '-' means no outliers of that kind were identified.

Mol	Type	Chain	Res	Link	Chirals	Torsions	Rings
2	FAD	A	601	1	-	1/30/50/50	0/6/6/6
3	5IH	B	602	-	-	3/5/13/13	0/3/3/3
3	5IH	A	602	-	-	3/5/13/13	0/3/3/3
4	C15	B	603	-	-	2/8/8/21	-
4	C15	A	603	-	-	2/13/13/21	-
2	FAD	B	601	1	-	5/30/50/50	0/6/6/6

All (16) bond length outliers are listed below:

Mol	Chain	Res	Type	Atoms	Z	Observed(Å)	Ideal(Å)
3	A	602	5IH	CAB-CAW	-5.74	1.37	1.51
3	B	602	5IH	CAB-CAW	-4.94	1.39	1.51
3	A	602	5IH	OAS-CAY	4.11	1.43	1.36
2	B	601	FAD	C10-N1	4.03	1.38	1.33
4	B	603	C15	O2S-S1	3.92	1.56	1.45
2	A	601	FAD	C10-N1	3.38	1.37	1.33
3	B	602	5IH	CAA-CAV	-3.36	1.43	1.51
4	A	603	C15	O3S-S1	2.69	1.57	1.47
2	B	601	FAD	C4X-N5	2.61	1.37	1.33
3	A	602	5IH	OAR-CAU	2.61	1.43	1.37
3	A	602	5IH	CAK-CAU	2.45	1.41	1.37
3	A	602	5IH	CAJ-CAI	2.43	1.41	1.36
2	B	601	FAD	C4-N3	2.16	1.36	1.33
2	B	601	FAD	C9A-C5X	-2.14	1.38	1.42
2	B	601	FAD	C2B-C1B	-2.12	1.50	1.53
2	B	601	FAD	C6-C5X	-2.01	1.38	1.41

All (39) bond angle outliers are listed below:

Mol	Chain	Res	Type	Atoms	Z	Observed(°)	Ideal(°)
2	A	601	FAD	C2-N3-C4	7.49	121.47	115.14

*Continued on next page...*

Continued from previous page...

Mol	Chain	Res	Type	Atoms	Z	Observed(°)	Ideal(°)
2	B	601	FAD	C2-N3-C4	6.51	120.64	115.14
2	A	601	FAD	C9A-N10-C10	-4.82	115.59	121.91
3	A	602	5IH	CAO-OAR-CAU	4.79	128.08	117.93
2	A	601	FAD	C1'-N10-C9A	4.70	121.99	118.29
2	B	601	FAD	N3A-C2A-N1A	-4.60	121.49	128.68
3	A	602	5IH	CAM-CBA-CAQ	4.13	113.27	108.69
2	A	601	FAD	N3A-C2A-N1A	-4.11	122.25	128.68
2	A	601	FAD	C9A-C5X-N5	-3.76	116.48	122.36
2	A	601	FAD	C1B-N9A-C4A	-3.48	120.53	126.64
2	B	601	FAD	O4B-C1B-C2B	-3.27	102.15	106.93
2	A	601	FAD	C4X-C4-N3	-3.21	119.05	123.43
4	B	603	C15	O3S-S1-O1S	3.16	119.00	111.27
3	B	602	5IH	CAO-OAR-CAU	3.09	124.48	117.93
2	A	601	FAD	C6-C5X-C9A	3.05	123.05	119.05
3	A	602	5IH	OAS-CAY-CAK	2.97	119.55	116.03
2	B	601	FAD	C4X-N5-C5X	2.94	119.71	116.77
3	A	602	5IH	CAB-CAW-CAV	-2.91	117.73	121.87
3	B	602	5IH	CAL-CAM-CBA	-2.78	106.89	112.15
4	B	603	C15	O2S-S1-C1	-2.74	103.61	106.92
3	A	602	5IH	CAM-CAL-CAN	-2.68	104.46	110.61
2	A	601	FAD	C4X-N5-C5X	2.66	119.43	116.77
2	B	601	FAD	C9A-C5X-N5	-2.58	118.32	122.36
2	A	601	FAD	O2'-C2'-C1'	2.54	115.71	109.59
3	A	602	5IH	CAI-CAU-CAK	-2.49	117.47	120.81
3	B	602	5IH	CAM-CBA-CAQ	2.47	111.43	108.69
2	A	601	FAD	O2P-P-O1P	2.41	124.15	112.24
2	B	601	FAD	O2P-P-O1P	2.38	124.03	112.24
3	A	602	5IH	CAL-CAM-CBA	-2.35	107.70	112.15
2	B	601	FAD	C9A-N10-C10	-2.34	118.85	121.91
3	B	602	5IH	CAB-CAW-CAV	-2.33	118.56	121.87
2	B	601	FAD	C1B-N9A-C4A	-2.31	122.58	126.64
2	A	601	FAD	C5A-C6A-N6A	2.28	123.81	120.35
3	A	602	5IH	CAK-CAY-CAZ	-2.17	120.64	123.05
2	B	601	FAD	C4X-C4-N3	-2.17	120.47	123.43
2	A	601	FAD	C4A-C5A-N7A	-2.16	107.14	109.40
3	A	602	5IH	CAU-CAK-CAY	2.13	121.53	119.13
3	B	602	5IH	OAR-CAO-CBA	2.12	113.74	108.21
2	A	601	FAD	C9-C9A-C5X	-2.10	116.29	119.88

There are no chirality outliers.

All (16) torsion outliers are listed below:

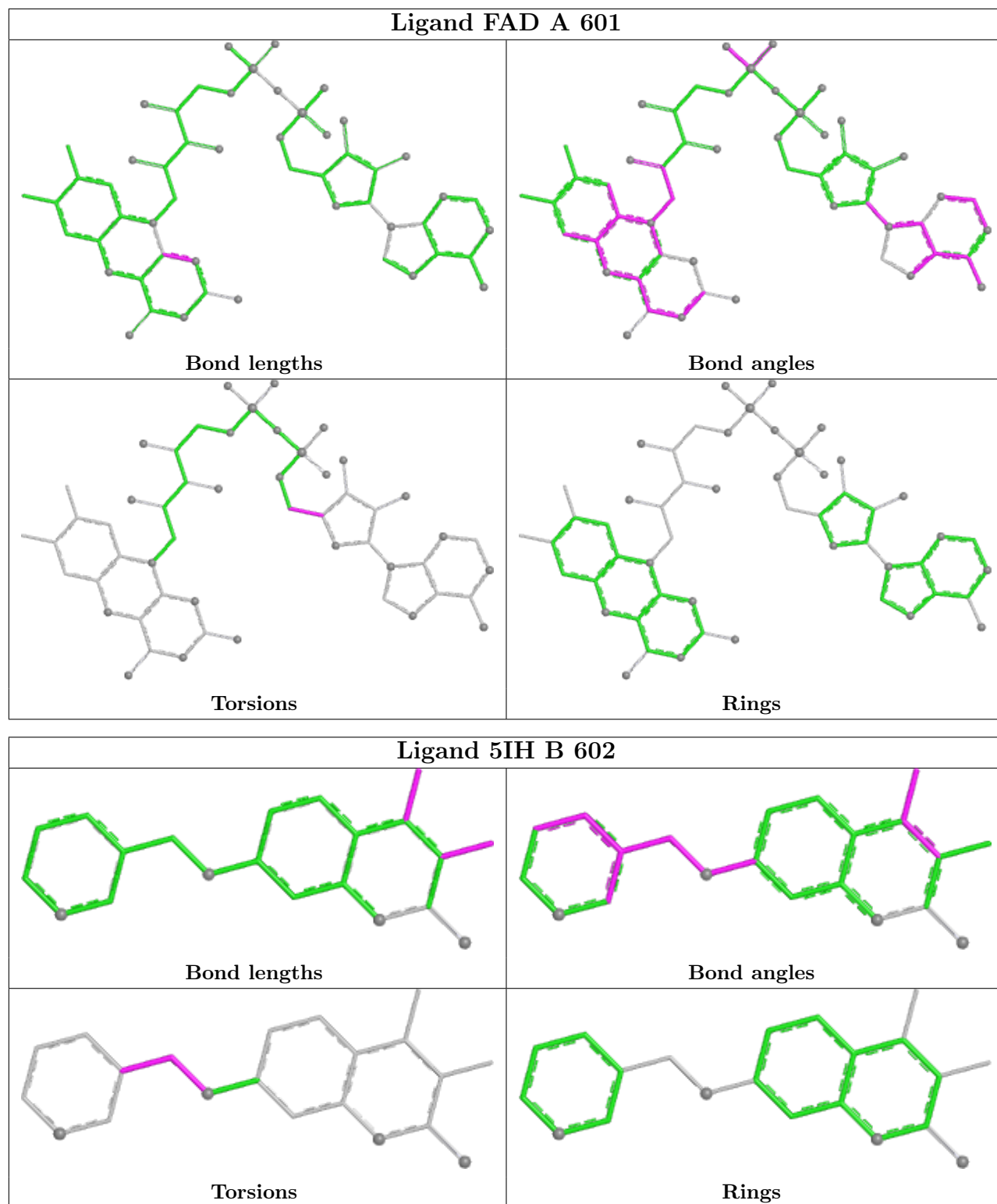
Mol	Chain	Res	Type	Atoms
2	B	601	FAD	C5B-O5B-PA-O2A
2	B	601	FAD	C2'-C1'-N10-C10
3	A	602	5IH	OAR-CAO-CBA-CAQ
3	B	602	5IH	OAR-CAO-CBA-CAQ
3	B	602	5IH	OAR-CAO-CBA-CAM
4	B	603	C15	S1-C1-C2-C3
3	A	602	5IH	OAR-CAO-CBA-CAM
4	A	603	C15	C13-C14-C15-C16
4	A	603	C15	S1-C1-C2-C3
3	A	602	5IH	CBA-CAO-OAR-CAU
2	B	601	FAD	C5B-O5B-PA-O3P
4	B	603	C15	C2-C1-S1-O3S
2	A	601	FAD	O4B-C4B-C5B-O5B
2	B	601	FAD	O4B-C4B-C5B-O5B
3	B	602	5IH	CBA-CAO-OAR-CAU
2	B	601	FAD	C5B-O5B-PA-O1A

There are no ring outliers.

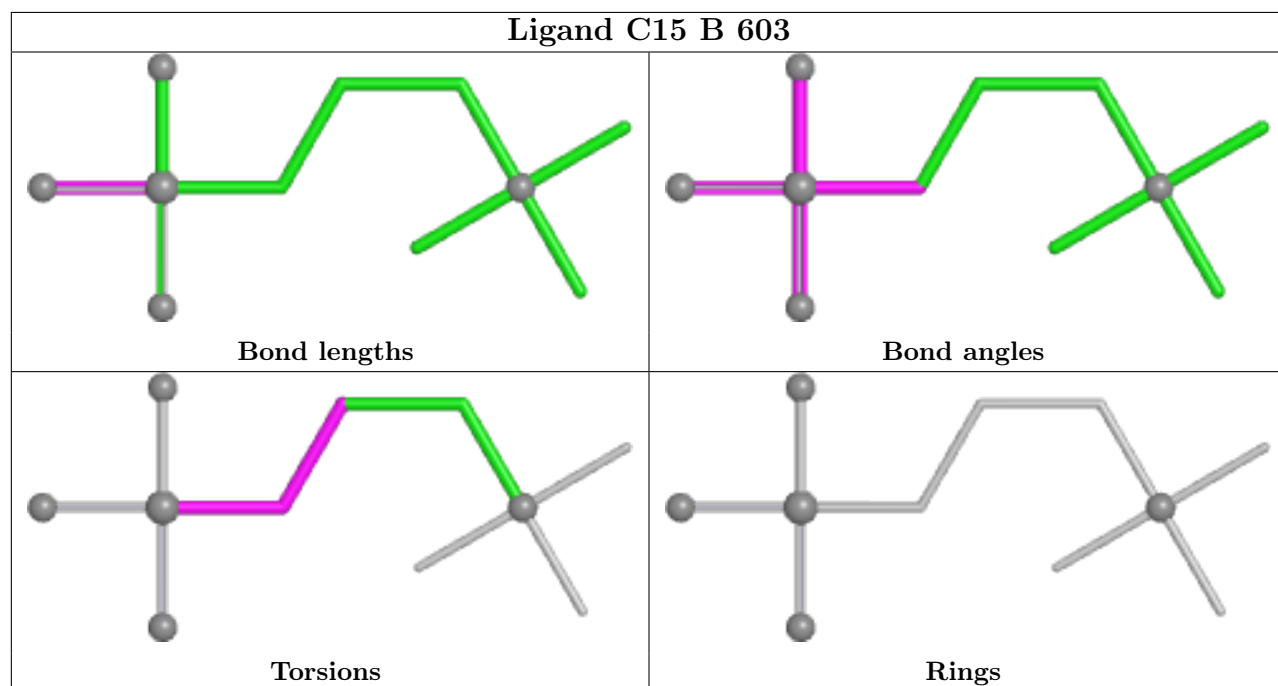
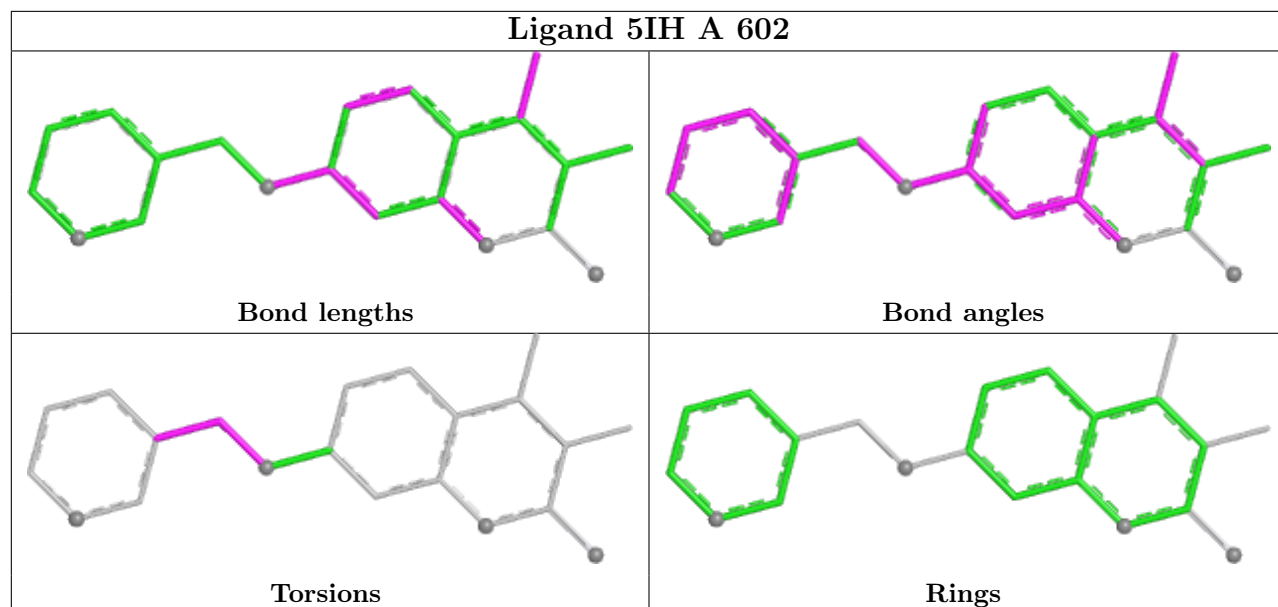
2 monomers are involved in 2 short contacts:

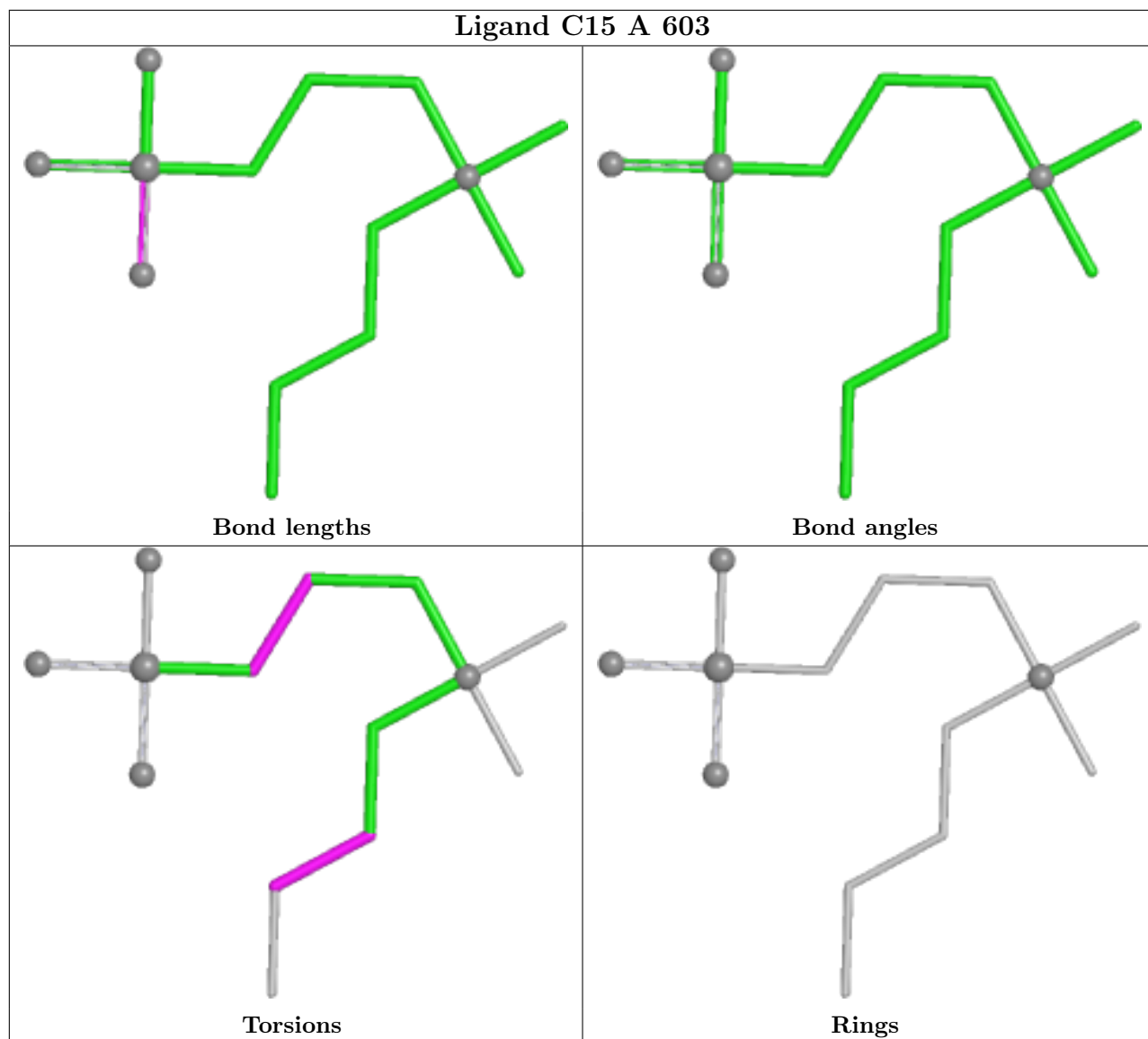
Mol	Chain	Res	Type	Clashes	Symm-Clashes
2	A	601	FAD	1	0
2	B	601	FAD	1	0

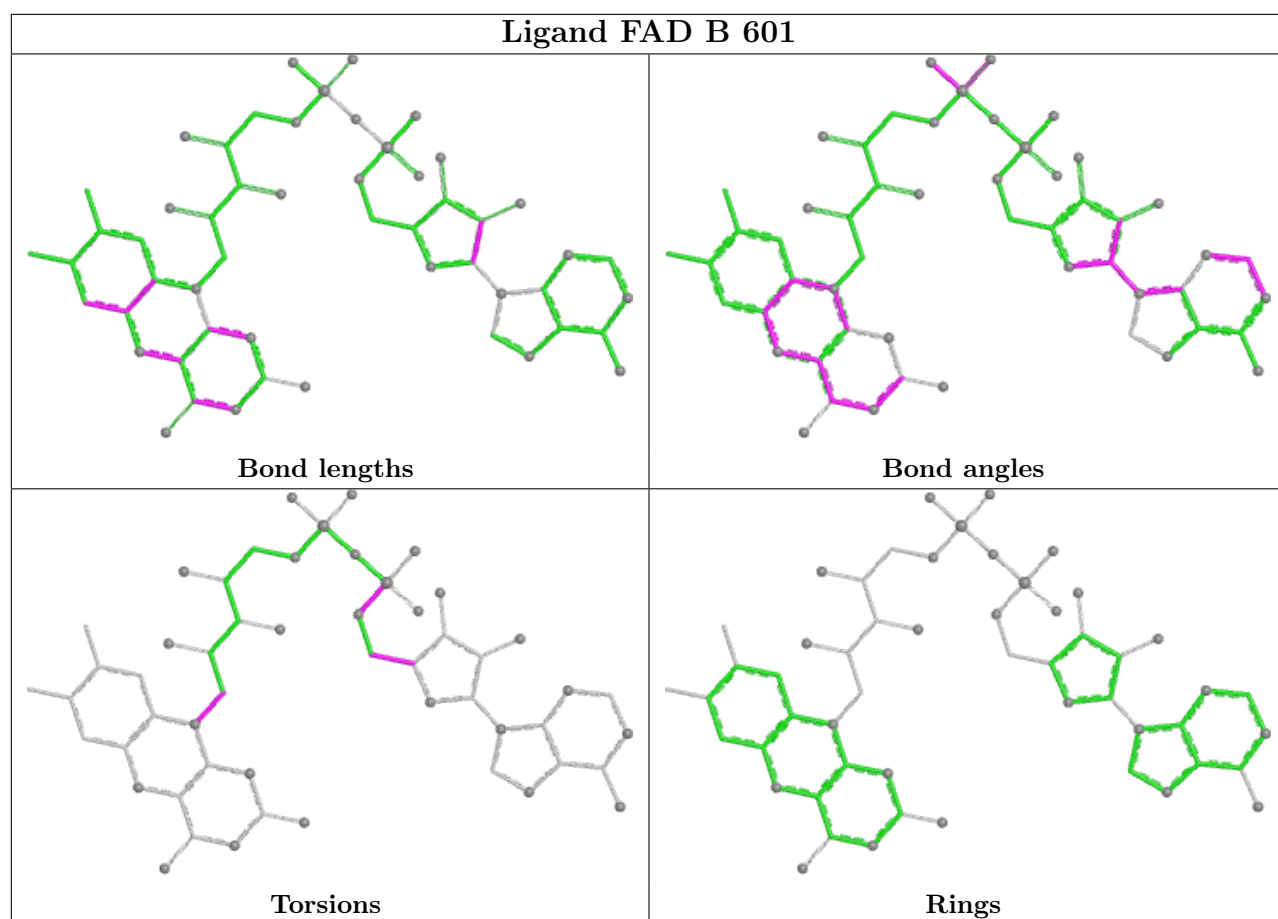
The following is a two-dimensional graphical depiction of Mogul quality analysis of bond lengths, bond angles, torsion angles, and ring geometry for all instances of the Ligand of Interest. In addition, ligands with molecular weight > 250 and outliers as shown on the validation Tables will also be included. For torsion angles, if less than 5% of the Mogul distribution of torsion angles is within 10 degrees of the torsion angle in question, then that torsion angle is considered an outlier. Any bond that is central to one or more torsion angles identified as an outlier by Mogul will be highlighted in the graph. For rings, the root-mean-square deviation (RMSD) between the ring in question and similar rings identified by Mogul is calculated over all ring torsion angles. If the average RMSD is greater than 60 degrees and the minimal RMSD between the ring in question and any Mogul-identified rings is also greater than 60 degrees, then that ring is considered an outlier. The outliers are highlighted in purple. The color gray indicates Mogul did not find sufficient equivalents in the CSD to analyse the geometry.











## 5.7 Other polymers [i](#)

There are no such residues in this entry.

## 5.8 Polymer linkage issues [i](#)

There are no chain breaks in this entry.

## 6 Fit of model and data [i](#)

### 6.1 Protein, DNA and RNA chains [i](#)

In the following table, the column labelled ‘#RSRZ > 2’ contains the number (and percentage) of RSRZ outliers, followed by percent RSRZ outliers for the chain as percentile scores relative to all X-ray entries and entries of similar resolution. The OWAB column contains the minimum, median, 95<sup>th</sup> percentile and maximum values of the occupancy-weighted average B-factor per residue. The column labelled ‘Q < 0.9’ lists the number of (and percentage) of residues with an average occupancy less than 0.9.

Mol	Chain	Analysed	<RSRZ>	#RSRZ>2	OWAB(Å <sup>2</sup> )	Q<0.9
1	A	499/520 (95%)	-0.36	9 (1%) 68 72	18, 27, 46, 81	0
1	B	494/520 (95%)	-0.36	3 (0%) 89 91	16, 24, 42, 77	0
All	All	993/1040 (95%)	-0.36	12 (1%) 79 82	16, 26, 45, 81	0

All (12) RSRZ outliers are listed below:

Mol	Chain	Res	Type	RSRZ
1	A	501	ILE	4.4
1	A	498	LEU	4.2
1	A	500	THR	3.7
1	B	496	ILE	3.0
1	B	495	LEU	3.0
1	A	495	LEU	2.7
1	A	499	THR	2.5
1	B	243	GLU	2.3
1	A	496	ILE	2.1
1	A	27	GLY	2.1
1	A	497	GLY	2.1
1	A	287	THR	2.1

### 6.2 Non-standard residues in protein, DNA, RNA chains [i](#)

There are no non-standard protein/DNA/RNA residues in this entry.

### 6.3 Carbohydrates [i](#)

There are no monosaccharides in this entry.

## 6.4 Ligands

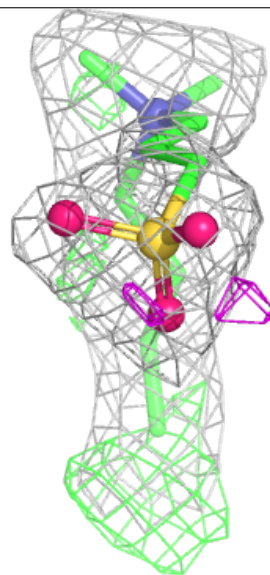
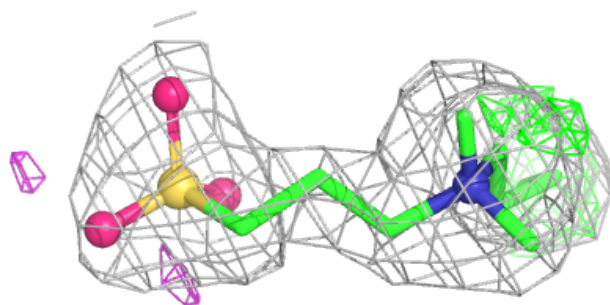
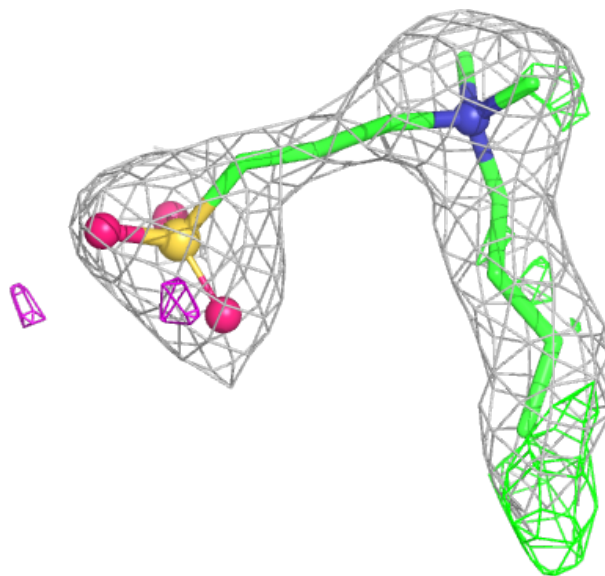
In the following table, the Atoms column lists the number of modelled atoms in the group and the number defined in the chemical component dictionary. The B-factors column lists the minimum, median, 95<sup>th</sup> percentile and maximum values of B factors of atoms in the group. The column labelled 'Q<0.9' lists the number of atoms with occupancy less than 0.9.

Mol	Type	Chain	Res	Atoms	RSCC	RSR	B-factors( $\text{\AA}^2$ )	Q<0.9
4	C15	A	603	14/22	0.83	0.18	41,46,72,73	0
4	C15	B	603	11/22	0.83	0.17	59,64,83,83	0
3	5IH	A	602	21/21	0.85	0.17	37,43,49,58	0
3	5IH	B	602	21/21	0.90	0.14	31,35,38,40	0
2	FAD	A	601	53/53	0.98	0.09	18,20,21,22	0
2	FAD	B	601	53/53	0.98	0.11	16,18,20,22	0

The following is a graphical depiction of the model fit to experimental electron density of all instances of the Ligand of Interest. In addition, ligands with molecular weight > 250 and outliers as shown on the geometry validation Tables will also be included. Each fit is shown from different orientation to approximate a three-dimensional view.

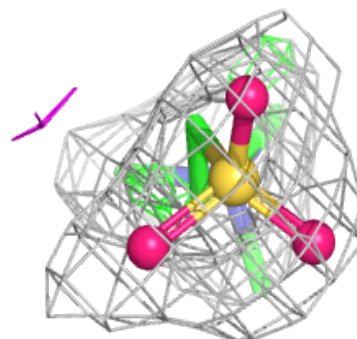
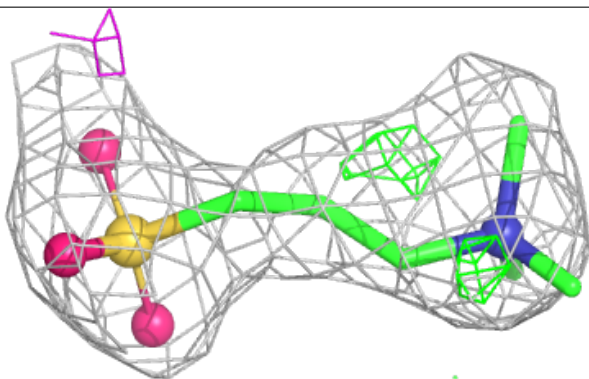
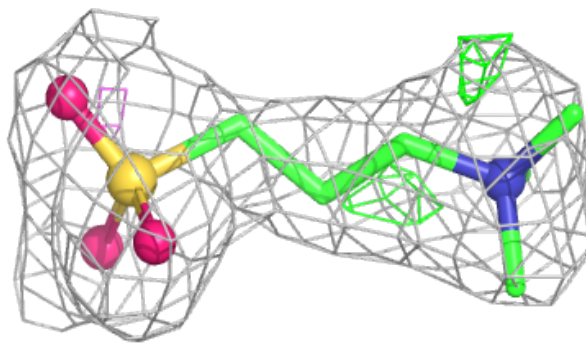
**Electron density around C15 A 603:**

$2mF_o-DF_c$  (at 0.7 rmsd) in gray  
 $mF_o-DF_c$  (at 3 rmsd) in purple (negative)  
and green (positive)

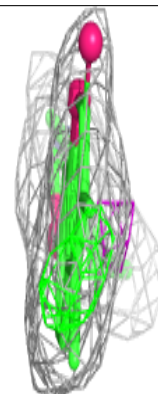
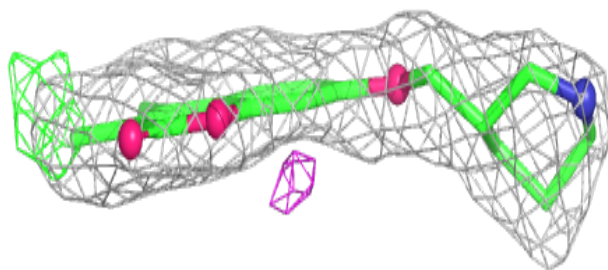
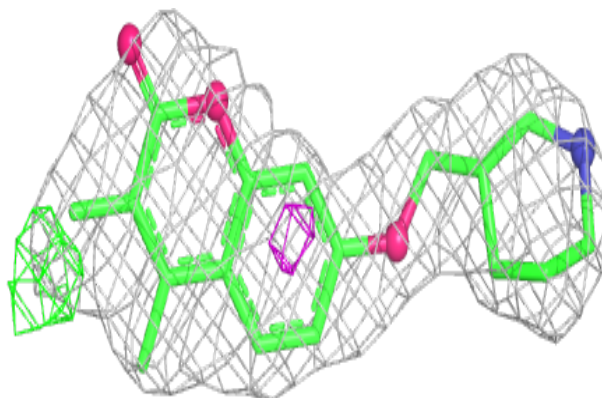


**Electron density around C15 B 603:**

$2mF_o-DF_c$  (at 0.7 rmsd) in gray  
 $mF_o-DF_c$  (at 3 rmsd) in purple (negative)  
and green (positive)

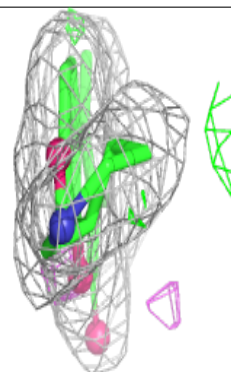
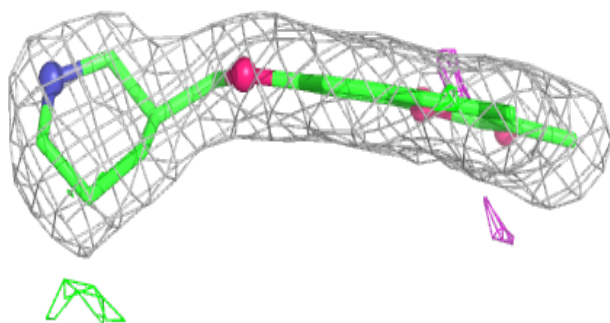
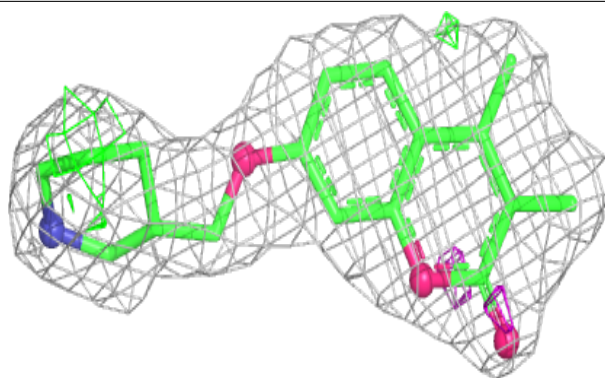
**Electron density around 5IH A 602:**

$2mF_o-DF_c$  (at 0.7 rmsd) in gray  
 $mF_o-DF_c$  (at 3 rmsd) in purple (negative)  
and green (positive)

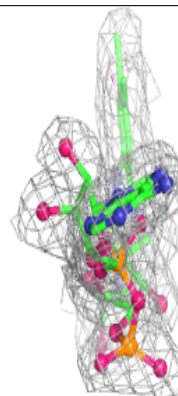
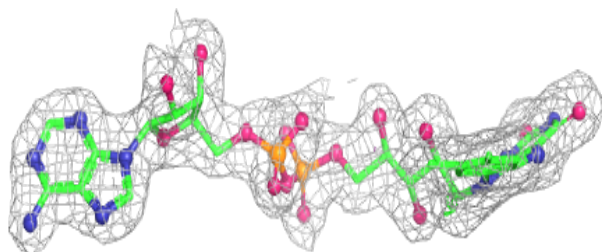
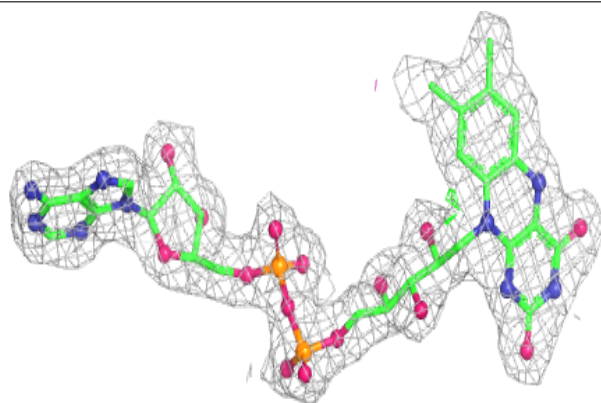


**Electron density around 5IH B 602:**

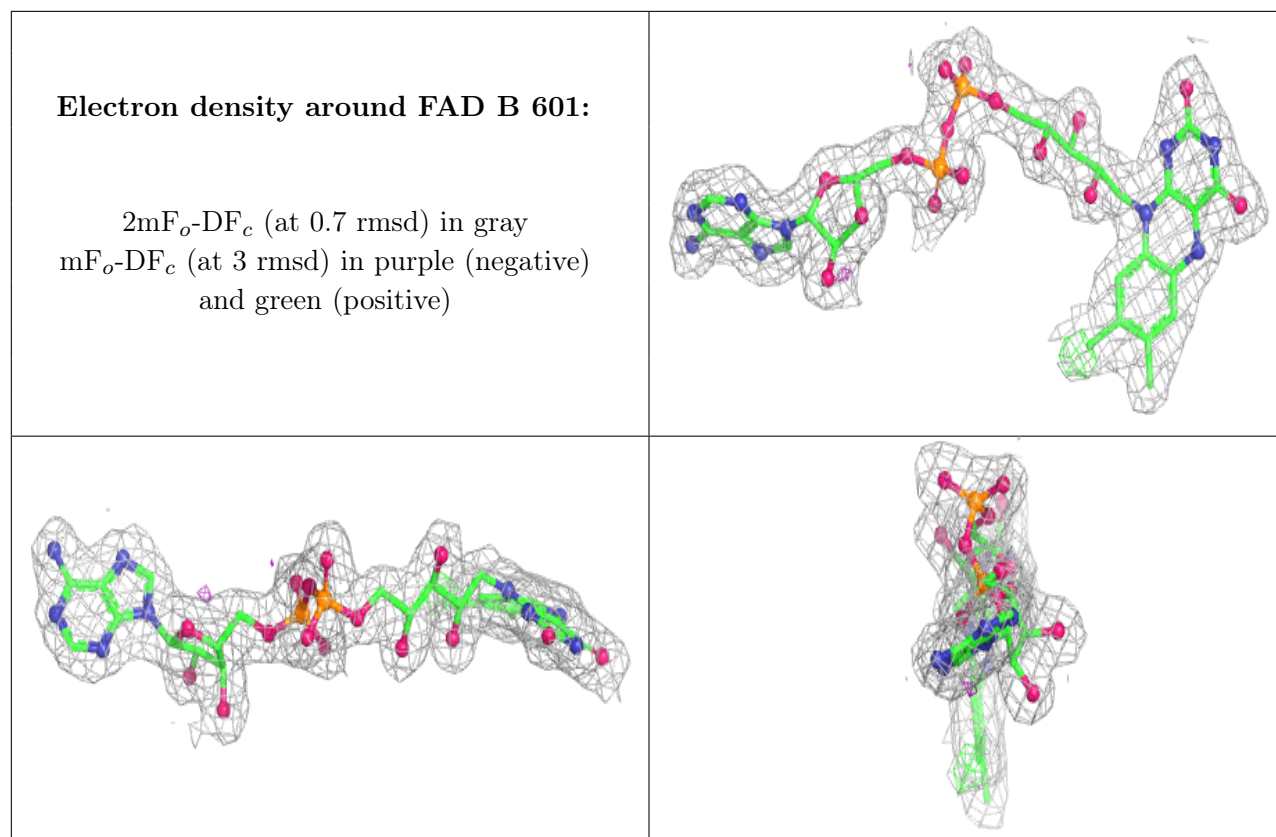
$2mF_o-DF_c$  (at 0.7 rmsd) in gray  
 $mF_o-DF_c$  (at 3 rmsd) in purple (negative)  
and green (positive)

**Electron density around FAD A 601:**

$2mF_o-DF_c$  (at 0.7 rmsd) in gray  
 $mF_o-DF_c$  (at 3 rmsd) in purple (negative)  
and green (positive)







## 6.5 Other polymers [i](#)

There are no such residues in this entry.