



Full wwPDB X-ray Structure Validation Report ⓘ

May 16, 2020 – 12:57 pm BST

PDB ID : 6P54
Title : Crystal structure of transpeptidase domain of PBP2 from *Neisseria gonorrhoeae* acylated by ceftriaxone
Authors : Singh, A.; Davies, C.
Deposited on : 2019-05-29
Resolution : 1.83 Å(reported)

This is a Full wwPDB X-ray Structure Validation Report for a publicly released PDB entry.

We welcome your comments at validation@mail.wwpdb.org

A user guide is available at

<https://www.wwpdb.org/validation/2017/XrayValidationReportHelp>

with specific help available everywhere you see the ⓘ symbol.

The following versions of software and data (see [references ⓘ](#)) were used in the production of this report:

MolProbity : 4.02b-467
Mogul : 1.8.5 (274361), CSD as541be (2020)
Xtriage (Phenix) : 1.13
EDS : 2.11
buster-report : 1.1.7 (2018)
Percentile statistics : 20191225.v01 (using entries in the PDB archive December 25th 2019)
Refmac : 5.8.0158
CCP4 : 7.0.044 (Gargrove)
Ideal geometry (proteins) : Engh & Huber (2001)
Ideal geometry (DNA, RNA) : Parkinson et al. (1996)
Validation Pipeline (wwPDB-VP) : 2.11

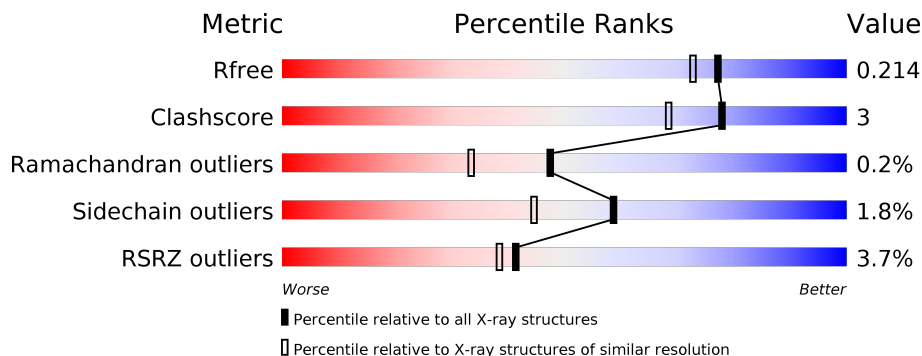
1 Overall quality at a glance i

The following experimental techniques were used to determine the structure:

X-RAY DIFFRACTION

The reported resolution of this entry is 1.83 Å.

Percentile scores (ranging between 0-100) for global validation metrics of the entry are shown in the following graphic. The table shows the number of entries on which the scores are based.



Metric	Whole archive (#Entries)	Similar resolution (#Entries, resolution range(Å))
R_{free}	130704	4003 (1.86-1.82)
Clashscore	141614	4233 (1.86-1.82)
Ramachandran outliers	138981	4185 (1.86-1.82)
Sidechain outliers	138945	4186 (1.86-1.82)
RSRZ outliers	127900	3957 (1.86-1.82)

The table below summarises the geometric issues observed across the polymeric chains and their fit to the electron density. The red, orange, yellow and green segments on the lower bar indicate the fraction of residues that contain outliers for ≥ 3 , 2, 1 and 0 types of geometric quality criteria respectively. A grey segment represents the fraction of residues that are not modelled. The numeric value for each fraction is indicated below the corresponding segment, with a dot representing fractions $\leq 5\%$. The upper red bar (where present) indicates the fraction of residues that have poor fit to the electron density. The numeric value is given above the bar.

Mol	Chain	Length	Quality of chain
1	A	329	
1	B	329	

2 Entry composition [i](#)

There are 6 unique types of molecules in this entry. The entry contains 5320 atoms, of which 0 are hydrogens and 0 are deuteriums.

In the tables below, the ZeroOcc column contains the number of atoms modelled with zero occupancy, the AltConf column contains the number of residues with at least one atom in alternate conformation and the Trace column contains the number of residues modelled with at most 2 atoms.

- Molecule 1 is a protein called Probable peptidoglycan D,D-transpeptidase PenA.

Mol	Chain	Residues	Atoms					ZeroOcc	AltConf	Trace
			Total	C	N	O	S			
1	A	325	Total	C	N	O	S	0	6	0
			2505	1593	447	457	8			
1	B	326	Total	C	N	O	S	0	5	0
			2500	1588	444	460	8			

There are 40 discrepancies between the modelled and reference sequences:

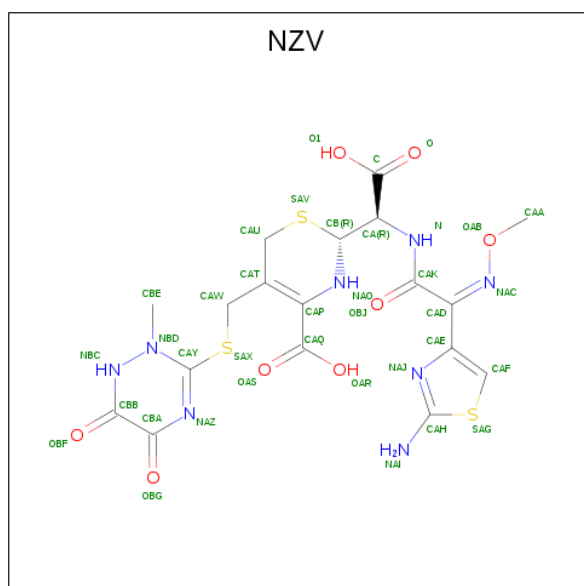
Chain	Residue	Modelled	Actual	Comment	Reference
A	232	GLY	-	expression tag	UNP P08149
A	233	SER	-	expression tag	UNP P08149
A	234	GLY	-	expression tag	UNP P08149
A	235	GLY	-	expression tag	UNP P08149
A	236	ALA	-	expression tag	UNP P08149
A	297	GLY	ALA	conflict	UNP P08149
A	?	-	TYR	deletion	UNP P08149
A	?	-	ASP	deletion	UNP P08149
A	?	-	PRO	deletion	UNP P08149
A	?	-	ASN	deletion	UNP P08149
A	?	-	ARG	deletion	UNP P08149
A	?	-	PRO	deletion	UNP P08149
A	?	-	GLY	deletion	UNP P08149
A	?	-	ARG	deletion	UNP P08149
A	?	-	ALA	deletion	UNP P08149
A	?	-	ASP	deletion	UNP P08149
A	?	-	SER	deletion	UNP P08149
A	?	-	GLU	deletion	UNP P08149
A	?	-	GLN	deletion	UNP P08149
A	?	-	ARG	deletion	UNP P08149
B	232	GLY	-	expression tag	UNP P08149
B	233	SER	-	expression tag	UNP P08149
B	234	GLY	-	expression tag	UNP P08149
B	235	GLY	-	expression tag	UNP P08149
B	236	ALA	-	expression tag	UNP P08149

Continued on next page...

Continued from previous page...

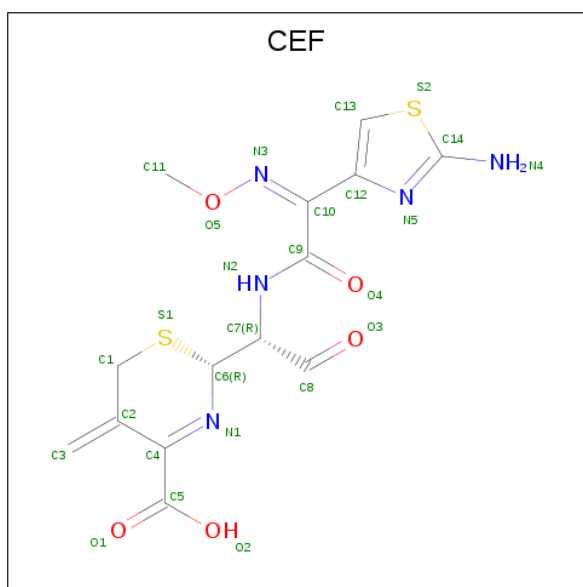
Chain	Residue	Modelled	Actual	Comment	Reference
B	297	GLY	ALA	conflict	UNP P08149
B	?	-	TYR	deletion	UNP P08149
B	?	-	ASP	deletion	UNP P08149
B	?	-	PRO	deletion	UNP P08149
B	?	-	ASN	deletion	UNP P08149
B	?	-	ARG	deletion	UNP P08149
B	?	-	PRO	deletion	UNP P08149
B	?	-	GLY	deletion	UNP P08149
B	?	-	ARG	deletion	UNP P08149
B	?	-	ALA	deletion	UNP P08149
B	?	-	ASP	deletion	UNP P08149
B	?	-	SER	deletion	UNP P08149
B	?	-	GLU	deletion	UNP P08149
B	?	-	GLN	deletion	UNP P08149
B	?	-	ARG	deletion	UNP P08149

- Molecule 2 is ceftriaxone, bound form (three-letter code: NZV) (formula: $C_{18}H_{20}N_8O_8S_3$) (labeled as "Ligand of Interest" by author).



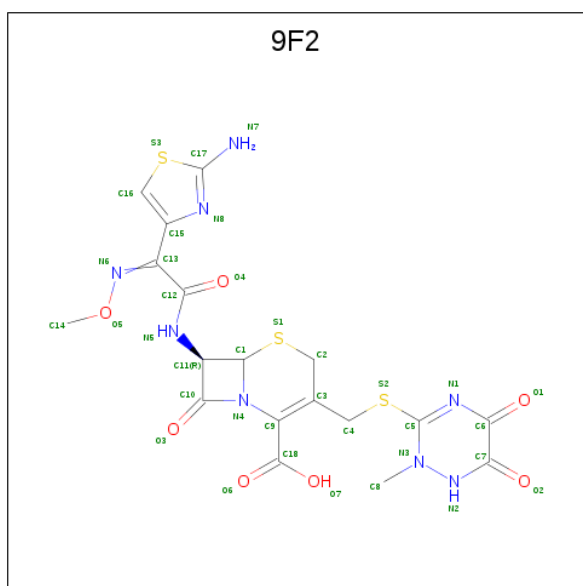
Mol	Chain	Residues	Atoms					ZeroOcc	AltConf
			Total	C	N	O	S		
2	A	1	36	18	8	7	3	0	0

- Molecule 3 is CEFOTAXIME, C3' cleaved, open, bound form (three-letter code: CEF) (formula: $C_{14}H_{15}N_5O_5S_2$).



Mol	Chain	Residues	Atoms					ZeroOcc	AltConf
			Total	C	N	O	S		
3	B	1	26	14	5	5	2	0	0

- Molecule 4 is Ceftriaxone (three-letter code: 9F2) (formula: $C_{18}H_{18}N_8O_7S_3$) (labeled as "Ligand of Interest" by author).



Mol	Chain	Residues	Atoms					ZeroOcc	AltConf
			Total	C	N	O	S		
4	B	1	36	18	8	7	3	0	0

- Molecule 5 is DI(HYDROXYETHYL)ETHER (three-letter code: PEG) (formula: $C_4H_{10}O_3$).



Mol	Chain	Residues	Atoms			ZeroOcc	AltConf
5	B	1	Total	C	O	0	0
			7	4	3		

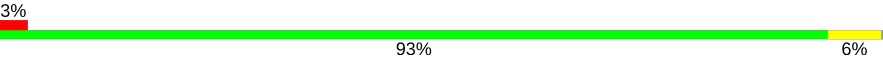
- Molecule 6 is water.

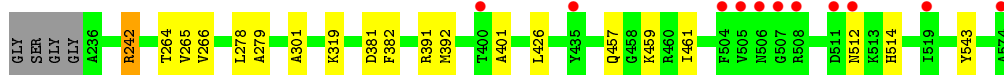
Mol	Chain	Residues	Atoms		ZeroOcc	AltConf
6	A	106	Total	O	0	0
			106	106		
6	B	104	Total	O	0	0
			104	104		

3 Residue-property plots [i](#)

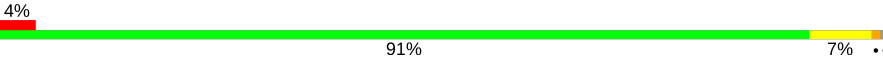
These plots are drawn for all protein, RNA and DNA chains in the entry. The first graphic for a chain summarises the proportions of the various outlier classes displayed in the second graphic. The second graphic shows the sequence view annotated by issues in geometry and electron density. Residues are color-coded according to the number of geometric quality criteria for which they contain at least one outlier: green = 0, yellow = 1, orange = 2 and red = 3 or more. A red dot above a residue indicates a poor fit to the electron density ($RSRZ > 2$). Stretches of 2 or more consecutive residues without any outlier are shown as a green connector. Residues present in the sample, but not in the model, are shown in grey.

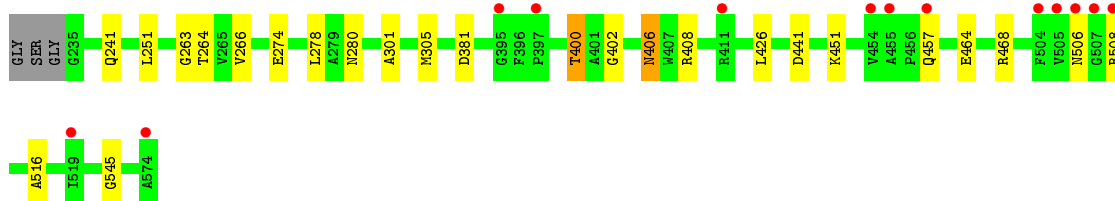
- Molecule 1: Probable peptidoglycan D,D-transpeptidase PenA

Chain A: 



- Molecule 1: Probable peptidoglycan D,D-transpeptidase PenA

Chain B: 



4 Data and refinement statistics

Property	Value	Source
Space group	P 1 21 1	Depositor
Cell constants a, b, c, α , β , γ	43.22Å 78.48Å 87.61Å 90.00° 91.34° 90.00°	Depositor
Resolution (Å)	35.01 – 1.83 35.01 – 1.83	Depositor EDS
% Data completeness (in resolution range)	98.1 (35.01-1.83) 98.2 (35.01-1.83)	Depositor EDS
R_{merge}	0.09	Depositor
R_{sym}	(Not available)	Depositor
$\langle I/\sigma(I) \rangle$ ¹	1.73 (at 1.83Å)	Xtrriage
Refinement program	REFMAC 5.8.0218	Depositor
R, R_{free}	0.172 , 0.210 0.181 , 0.214	Depositor DCC
R_{free} test set	2584 reflections (5.08%)	wwPDB-VP
Wilson B-factor (Å ²)	27.4	Xtrriage
Anisotropy	0.681	Xtrriage
Bulk solvent k_{sol} (e/Å ³), B_{sol} (Å ²)	0.36 , 42.4	EDS
L-test for twinning ²	$\langle L \rangle = 0.49$, $\langle L^2 \rangle = 0.32$	Xtrriage
Estimated twinning fraction	0.036 for h,-k,-l	Xtrriage
F_o, F_c correlation	0.97	EDS
Total number of atoms	5320	wwPDB-VP
Average B, all atoms (Å ²)	34.0	wwPDB-VP

Xtrriage's analysis on translational NCS is as follows: *The largest off-origin peak in the Patterson function is 5.27% of the height of the origin peak. No significant pseudotranslation is detected.*

¹ Intensities estimated from amplitudes.

² Theoretical values of $\langle |L| \rangle$, $\langle L^2 \rangle$ for acentric reflections are 0.5, 0.333 respectively for untwinned datasets, and 0.375, 0.2 for perfectly twinned datasets.

5 Model quality [i](#)

5.1 Standard geometry [i](#)

Bond lengths and bond angles in the following residue types are not validated in this section: CEF, PEG, NZV, 9F2

The Z score for a bond length (or angle) is the number of standard deviations the observed value is removed from the expected value. A bond length (or angle) with $|Z| > 5$ is considered an outlier worth inspection. RMSZ is the root-mean-square of all Z scores of the bond lengths (or angles).

Mol	Chain	Bond lengths		Bond angles	
		RMSZ	# Z >5	RMSZ	# Z >5
1	A	0.51	0/2575	0.68	1/3488 (0.0%)
1	B	0.51	0/2567	0.70	0/3477
All	All	0.51	0/5142	0.69	1/6965 (0.0%)

There are no bond length outliers.

All (1) bond angle outliers are listed below:

Mol	Chain	Res	Type	Atoms	Z	Observed(°)	Ideal(°)
1	A	381	ASP	CB-CG-OD1	5.15	122.94	118.30

There are no chirality outliers.

There are no planarity outliers.

5.2 Too-close contacts [i](#)

In the following table, the Non-H and H(model) columns list the number of non-hydrogen atoms and hydrogen atoms in the chain respectively. The H(added) column lists the number of hydrogen atoms added and optimized by MolProbity. The Clashes column lists the number of clashes within the asymmetric unit, whereas Symm-Clashes lists symmetry related clashes.

Mol	Chain	Non-H	H(model)	H(added)	Clashes	Symm-Clashes
1	A	2505	0	2564	15	0
1	B	2500	0	2549	16	0
2	A	36	0	0	1	0
3	B	26	0	0	0	0
4	B	36	0	0	1	0
5	B	7	0	10	0	0
6	A	106	0	0	0	0
6	B	104	0	0	0	0

Continued on next page...

Continued from previous page...

Mol	Chain	Non-H	H(model)	H(added)	Clashes	Symm-Clashes
All	All	5320	0	5123	30	0

The all-atom clashscore is defined as the number of clashes found per 1000 atoms (including hydrogen atoms). The all-atom clashscore for this structure is 3.

All (30) close contacts within the same asymmetric unit are listed below, sorted by their clash magnitude.

Atom-1	Atom-2	Interatomic distance (Å)	Clash overlap (Å)
1:A:242[A]:ARG:HH21	1:A:242[A]:ARG:HG3	0.91	1.06
1:A:242[A]:ARG:HH21	1:A:242[A]:ARG:CG	1.70	1.02
1:A:242[A]:ARG:NH2	1:A:242[A]:ARG:HG3	1.73	0.94
1:B:441:ASP:HB3	1:B:464:GLU:HG2	1.74	0.68
1:A:459:LYS:HE3	1:A:461:ILE:HD11	1.79	0.65
1:A:264:THR:CG2	1:A:301:ALA:HB2	2.28	0.62
1:B:264:THR:CG2	1:B:301:ALA:HB2	2.33	0.57
1:B:305[A]:MET:SD	1:B:402:GLY:HA2	2.44	0.57
1:B:266:VAL:HG22	1:B:278:LEU:HD12	1.91	0.52
1:A:459:LYS:HD2	1:B:381:ASP:OD2	2.11	0.50
1:A:264:THR:HG21	1:A:301:ALA:HA	1.93	0.50
1:A:242[A]:ARG:CG	1:A:242[A]:ARG:NH2	2.42	0.50
1:A:514:HIS:CE1	1:A:543:TYR:CE1	3.01	0.49
1:B:406:ASN:HD22	1:B:408:ARG:H	1.61	0.48
2:A:600:NZV:CAA	2:A:600:NZV:OBG	2.62	0.47
1:B:305[A]:MET:CE	1:B:400:THR:HG23	2.44	0.47
1:A:264:THR:HG21	1:A:301:ALA:CA	2.44	0.47
1:B:406:ASN:ND2	1:B:408:ARG:H	2.13	0.47
1:B:251:LEU:HD11	1:B:263:GLY:HA3	1.97	0.46
1:B:464:GLU:OE2	1:B:468:ARG:HD2	2.15	0.46
1:A:266:VAL:HG22	1:A:278[A]:LEU:HD12	1.97	0.45
1:B:305[A]:MET:HE2	1:B:400:THR:HG23	1.97	0.45
1:B:241[B]:GLN:HG3	4:B:602:9F2:N7	2.30	0.45
1:A:265[A]:VAL:CG1	1:A:279:ALA:HB3	2.47	0.45
1:A:319:LYS:HD2	1:A:382:PHE:CD1	2.54	0.43
1:A:392:MET:HE2	1:B:408:ARG:NH2	2.34	0.43
1:B:274:GLU:OE2	1:B:451:LYS:HA	2.19	0.42
1:B:264:THR:HG23	1:B:280:ASN:OD1	2.21	0.41
1:B:516:ALA:HB1	1:B:545:GLY:HA2	2.02	0.41
1:A:391:ARG:HG3	1:A:401:ALA:HB2	2.03	0.40

There are no symmetry-related clashes.

5.3 Torsion angles [i](#)

5.3.1 Protein backbone [i](#)

In the following table, the Percentiles column shows the percent Ramachandran outliers of the chain as a percentile score with respect to all X-ray entries followed by that with respect to entries of similar resolution.

The Analysed column shows the number of residues for which the backbone conformation was analysed, and the total number of residues.

Mol	Chain	Analysed	Favoured	Allowed	Outliers	Percentiles	
1	A	329/329 (100%)	326 (99%)	3 (1%)	0	100	100
1	B	329/329 (100%)	322 (98%)	6 (2%)	1 (0%)	41	27
All	All	658/658 (100%)	648 (98%)	9 (1%)	1 (0%)	47	33

All (1) Ramachandran outliers are listed below:

Mol	Chain	Res	Type
1	B	506	ASN

5.3.2 Protein sidechains [i](#)

In the following table, the Percentiles column shows the percent sidechain outliers of the chain as a percentile score with respect to all X-ray entries followed by that with respect to entries of similar resolution.

The Analysed column shows the number of residues for which the sidechain conformation was analysed, and the total number of residues.

Mol	Chain	Analysed	Rotameric	Outliers	Percentiles	
1	A	262/257 (102%)	257 (98%)	5 (2%)	57	42
1	B	261/257 (102%)	256 (98%)	5 (2%)	57	42
All	All	523/514 (102%)	513 (98%)	10 (2%)	59	42

All (10) residues with a non-rotameric sidechain are listed below:

Mol	Chain	Res	Type
1	A	242[A]	ARG
1	A	242[B]	ARG
1	A	426	LEU
1	A	457	GLN
1	A	512	ASN

Continued on next page...

Continued from previous page...

Mol	Chain	Res	Type
1	B	400	THR
1	B	406	ASN
1	B	426	LEU
1	B	457	GLN
1	B	508	ARG

Some sidechains can be flipped to improve hydrogen bonding and reduce clashes. All (6) such sidechains are listed below:

Mol	Chain	Res	Type
1	A	335	GLN
1	A	360	GLN
1	A	384	HIS
1	B	360	GLN
1	B	384	HIS
1	B	406	ASN

5.3.3 RNA [i](#)

There are no RNA molecules in this entry.

5.4 Non-standard residues in protein, DNA, RNA chains [i](#)

There are no non-standard protein/DNA/RNA residues in this entry.

5.5 Carbohydrates [i](#)

There are no carbohydrates in this entry.

5.6 Ligand geometry [i](#)

4 ligands are modelled in this entry.

In the following table, the Counts columns list the number of bonds (or angles) for which Mogul statistics could be retrieved, the number of bonds (or angles) that are observed in the model and the number of bonds (or angles) that are defined in the Chemical Component Dictionary. The Link column lists molecule types, if any, to which the group is linked. The Z score for a bond length (or angle) is the number of standard deviations the observed value is removed from the expected value. A bond length (or angle) with $|Z| > 2$ is considered an outlier worth inspection. RMSZ is the root-mean-square of all Z scores of the bond lengths (or angles).

Mol	Type	Chain	Res	Link	Bond lengths			Bond angles		
					Counts	RMSZ	# Z > 2	Counts	RMSZ	# Z > 2
5	PEG	B	603	-	6,6,6	0.48	0	5,5,5	0.29	0
3	CEF	B	601	1	17,27,27	2.04	5 (29%)	11,37,37	5.07	4 (36%)
2	NZV	A	600	1	27,38,39	1.72	4 (14%)	19,53,55	3.83	9 (47%)
4	9F2	B	602	-	31,39,39	1.61	5 (16%)	29,57,57	3.08	9 (31%)

In the following table, the Chirals column lists the number of chiral outliers, the number of chiral centers analysed, the number of these observed in the model and the number defined in the Chemical Component Dictionary. Similar counts are reported in the Torsion and Rings columns. '-' means no outliers of that kind were identified.

Mol	Type	Chain	Res	Link	Chirals	Torsions	Rings
5	PEG	B	603	-	-	3/4/4/4	-
3	CEF	B	601	1	-	5/11/38/38	0/1/2/2
2	NZV	A	600	1	-	3/15/43/45	0/2/3/3
4	9F2	B	602	-	-	6/15/53/53	0/4/4/4

All (14) bond length outliers are listed below:

Mol	Chain	Res	Type	Atoms	Z	Observed(Å)	Ideal(Å)
2	A	600	NZV	OAB-NAC	-6.48	1.25	1.40
4	B	602	9F2	O5-N6	-5.65	1.27	1.40
3	B	601	CEF	O5-N3	-5.58	1.27	1.40
3	B	601	CEF	C5-C4	-3.99	1.46	1.52
4	B	602	9F2	C18-C9	-2.86	1.47	1.52
4	B	602	9F2	C13-C12	-2.69	1.45	1.50
2	A	600	NZV	CAD-NAC	-2.59	1.25	1.29
2	A	600	NZV	CAD-CAK	-2.49	1.45	1.50
3	B	601	CEF	C4-N1	-2.47	1.26	1.28
4	B	602	9F2	C16-S3	2.43	1.74	1.70
3	B	601	CEF	C10-C9	-2.24	1.46	1.50
2	A	600	NZV	CAQ-CAP	-2.23	1.48	1.52
3	B	601	CEF	C1-S1	-2.15	1.77	1.82
4	B	602	9F2	C10-N4	-2.05	1.31	1.38

All (22) bond angle outliers are listed below:

Mol	Chain	Res	Type	Atoms	Z	Observed(°)	Ideal(°)
3	B	601	CEF	C11-O5-N3	12.55	122.98	108.40
4	B	602	9F2	C14-O5-N6	11.42	121.66	108.40
3	B	601	CEF	O5-N3-C10	10.18	122.48	111.28

Continued on next page...

Continued from previous page...

Mol	Chain	Res	Type	Atoms	Z	Observed(°)	Ideal(°)
2	A	600	NZV	CAA-OAB-NAC	9.56	119.51	108.40
4	B	602	9F2	O5-N6-C13	7.63	119.67	111.28
2	A	600	NZV	CB-CA-N	6.96	125.15	109.98
2	A	600	NZV	OAB-NAC-CAD	6.07	117.96	111.28
2	A	600	NZV	CBA-NAZ-CAY	5.40	121.98	115.79
2	A	600	NZV	CB-NAO-CAP	4.98	130.03	118.32
4	B	602	9F2	C6-N1-C5	4.84	121.34	115.79
2	A	600	NZV	CAW-SAX-CAY	4.73	107.92	101.86
3	B	601	CEF	C12-C13-S2	3.28	115.82	111.79
2	A	600	NZV	CAU-SAV-CB	3.28	100.90	94.47
4	B	602	9F2	N7-C17-N8	-2.49	119.96	123.19
4	B	602	9F2	C2-S1-C1	-2.45	89.67	94.47
2	A	600	NZV	CAE-CAF-SAG	2.43	114.78	111.79
4	B	602	9F2	S1-C1-N4	-2.41	105.70	110.48
3	B	601	CEF	C1-S1-C6	2.31	99.01	94.47
2	A	600	NZV	CAT-CAU-SAV	-2.25	110.90	115.08
4	B	602	9F2	C1-C11-N5	-2.23	113.39	118.27
4	B	602	9F2	C11-C1-N4	-2.19	84.14	87.09
4	B	602	9F2	O3-C10-N4	2.00	136.55	131.76

There are no chirality outliers.

All (17) torsion outliers are listed below:

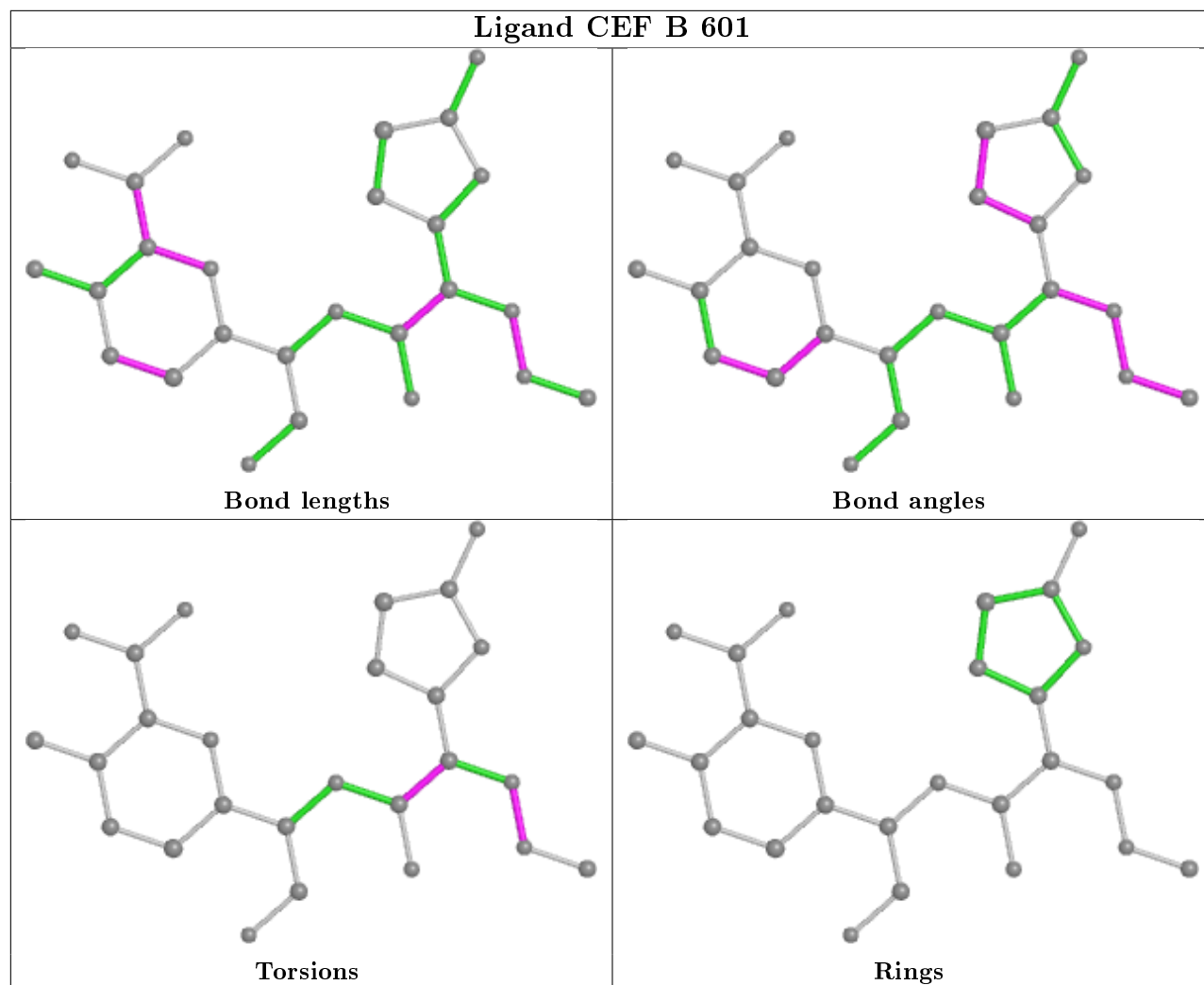
Mol	Chain	Res	Type	Atoms
3	B	601	CEF	C10-N3-O5-C11
4	B	602	9F2	C3-C4-S2-C5
4	B	602	9F2	N1-C5-S2-C4
4	B	602	9F2	N3-C5-S2-C4
4	B	602	9F2	C13-N6-O5-C14
5	B	603	PEG	O2-C3-C4-O4
2	A	600	NZV	CAD-NAC-OAB-CAA
3	B	601	CEF	C12-C10-C9-O4
5	B	603	PEG	C1-C2-O2-C3
2	A	600	NZV	NAC-CAD-CAK-OBJ
4	B	602	9F2	O4-C12-C13-N6
2	A	600	NZV	NAC-CAD-CAK-N
4	B	602	9F2	N5-C12-C13-N6
3	B	601	CEF	N3-C10-C9-O4
3	B	601	CEF	N3-C10-C9-N2
3	B	601	CEF	C12-C10-C9-N2
5	B	603	PEG	O1-C1-C2-O2

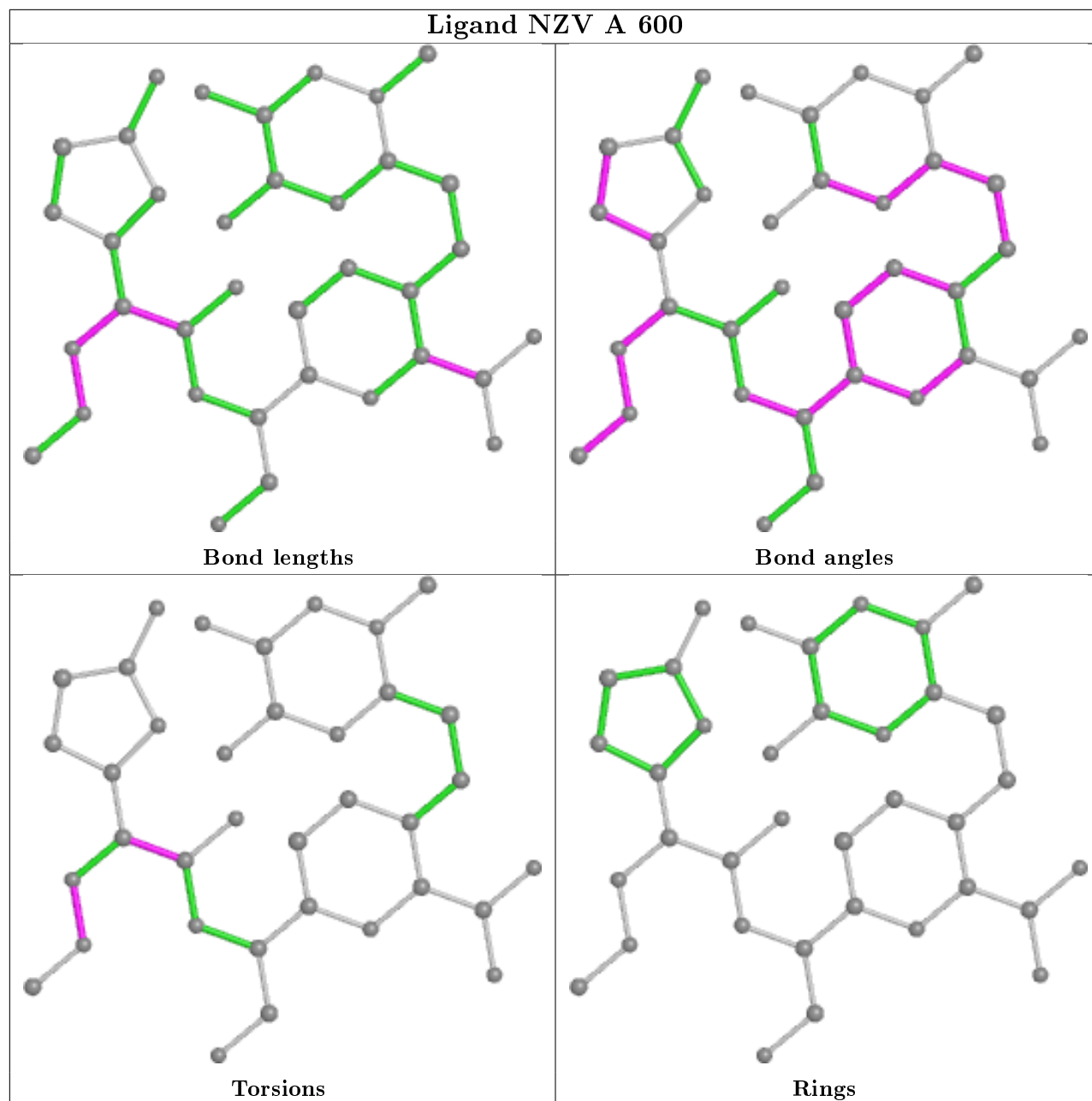
There are no ring outliers.

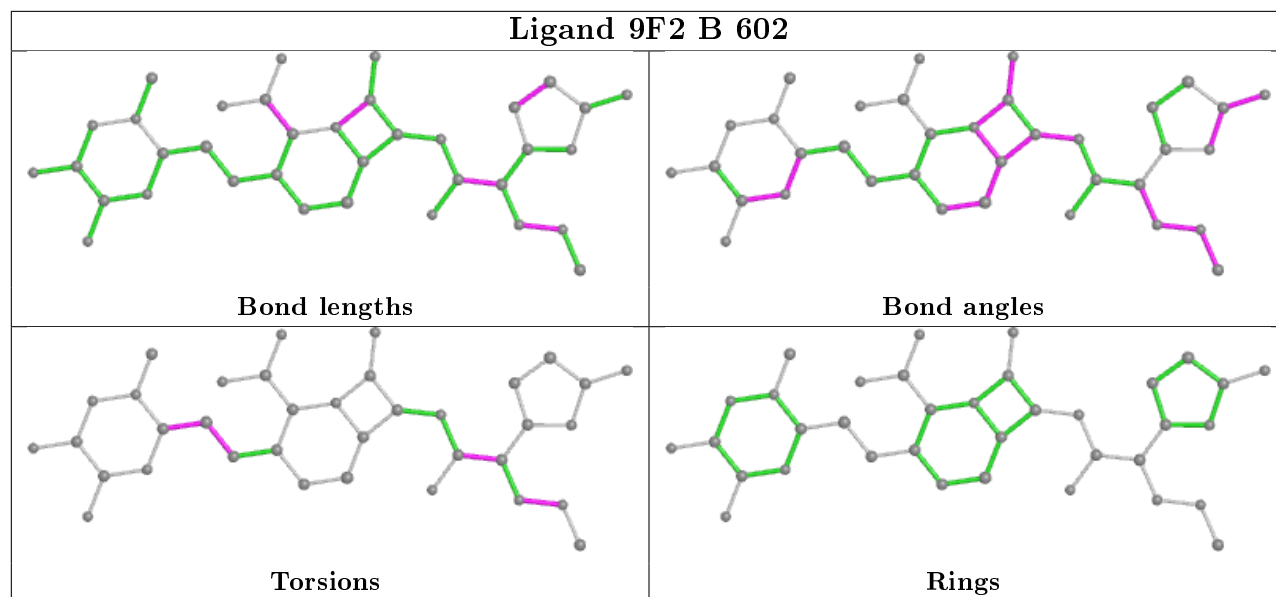
2 monomers are involved in 2 short contacts:

Mol	Chain	Res	Type	Clashes	Symm-Clashes
2	A	600	NZV	1	0
4	B	602	9F2	1	0

The following is a two-dimensional graphical depiction of Mogul quality analysis of bond lengths, bond angles, torsion angles, and ring geometry for all instances of the Ligand of Interest. In addition, ligands with molecular weight > 250 and outliers as shown on the validation Tables will also be included. For torsion angles, if less than 5% of the Mogul distribution of torsion angles is within 10 degrees of the torsion angle in question, then that torsion angle is considered an outlier. Any bond that is central to one or more torsion angles identified as an outlier by Mogul will be highlighted in the graph. For rings, the root-mean-square deviation (RMSD) between the ring in question and similar rings identified by Mogul is calculated over all ring torsion angles. If the average RMSD is greater than 60 degrees and the minimal RMSD between the ring in question and any Mogul-identified rings is also greater than 60 degrees, then that ring is considered an outlier. The outliers are highlighted in purple. The color gray indicates Mogul did not find sufficient equivalents in the CSD to analyse the geometry.







5.7 Other polymers [i](#)

There are no such residues in this entry.

5.8 Polymer linkage issues [i](#)

There are no chain breaks in this entry.

6 Fit of model and data

6.1 Protein, DNA and RNA chains

In the following table, the column labelled ‘#RSRZ> 2’ contains the number (and percentage) of RSRZ outliers, followed by percent RSRZ outliers for the chain as percentile scores relative to all X-ray entries and entries of similar resolution. The OWAB column contains the minimum, median, 95th percentile and maximum values of the occupancy-weighted average B-factor per residue. The column labelled ‘Q< 0.9’ lists the number of (and percentage) of residues with an average occupancy less than 0.9.

Mol	Chain	Analysed	<RSRZ>	#RSRZ>2	OWAB(Å ²)	Q<0.9
1	A	325/329 (98%)	0.22	11 (3%) 45 41	21, 30, 49, 87	0
1	B	326/329 (99%)	0.13	13 (3%) 38 35	21, 31, 55, 88	0
All	All	651/658 (98%)	0.17	24 (3%) 41 38	21, 31, 53, 88	0

All (24) RSRZ outliers are listed below:

Mol	Chain	Res	Type	RSRZ
1	B	506	ASN	7.3
1	A	505	VAL	6.0
1	A	506	ASN	5.0
1	B	505	VAL	4.8
1	B	504	PHE	4.5
1	A	508	ARG	4.4
1	A	504	PHE	4.3
1	A	519[A]	ILE	4.0
1	B	455	ALA	3.3
1	B	574	ALA	3.2
1	A	512	ASN	3.1
1	B	395	GLY	3.0
1	B	519[A]	ILE	2.9
1	B	507	GLY	2.9
1	B	411	ARG	2.7
1	B	457	GLN	2.6
1	A	511	ASP	2.5
1	A	574	ALA	2.5
1	B	397	PRO	2.3
1	B	508	ARG	2.3
1	A	507	GLY	2.3
1	B	454	VAL	2.2
1	A	435	TYR	2.2
1	A	400	THR	2.1

6.2 Non-standard residues in protein, DNA, RNA chains [i](#)

There are no non-standard protein/DNA/RNA residues in this entry.

6.3 Carbohydrates [i](#)

There are no carbohydrates in this entry.

6.4 Ligands [i](#)

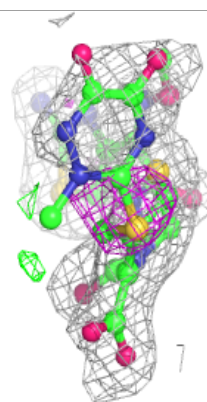
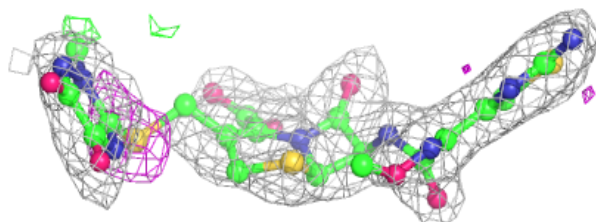
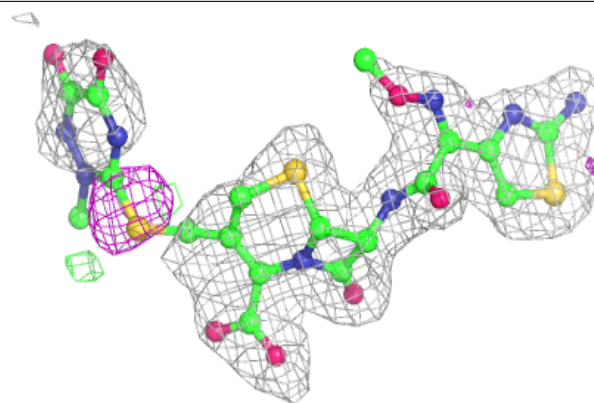
In the following table, the Atoms column lists the number of modelled atoms in the group and the number defined in the chemical component dictionary. The B-factors column lists the minimum, median, 95th percentile and maximum values of B factors of atoms in the group. The column labelled 'Q< 0.9' lists the number of atoms with occupancy less than 0.9.

Mol	Type	Chain	Res	Atoms	RSCC	RSR	B-factors(Å ²)	Q<0.9
4	9F2	B	602	36/36	0.89	0.20	35,51,95,102	0
5	PEG	B	603	7/7	0.90	0.11	46,48,50,50	0
2	NZV	A	600	36/37	0.94	0.11	23,30,49,51	0
3	CEF	B	601	26/26	0.94	0.10	26,34,43,51	0

The following is a graphical depiction of the model fit to experimental electron density of all instances of the Ligand of Interest. In addition, ligands with molecular weight > 250 and outliers as shown on the geometry validation Tables will also be included. Each fit is shown from different orientation to approximate a three-dimensional view.

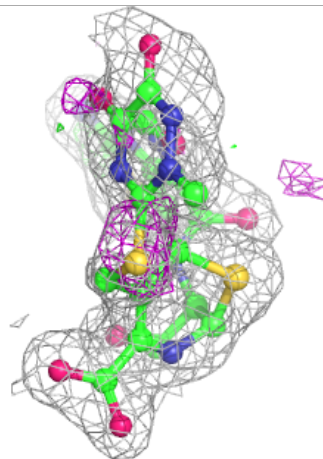
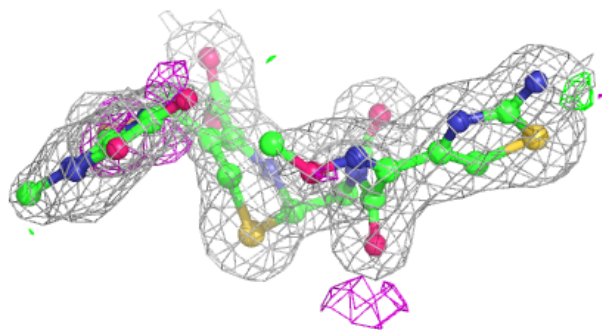
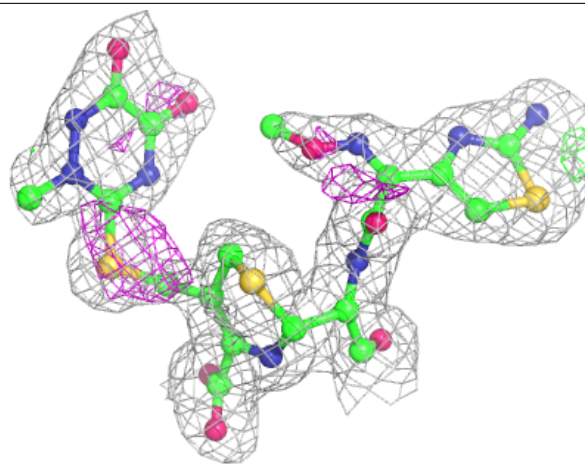
Electron density around 9F2 B 602:

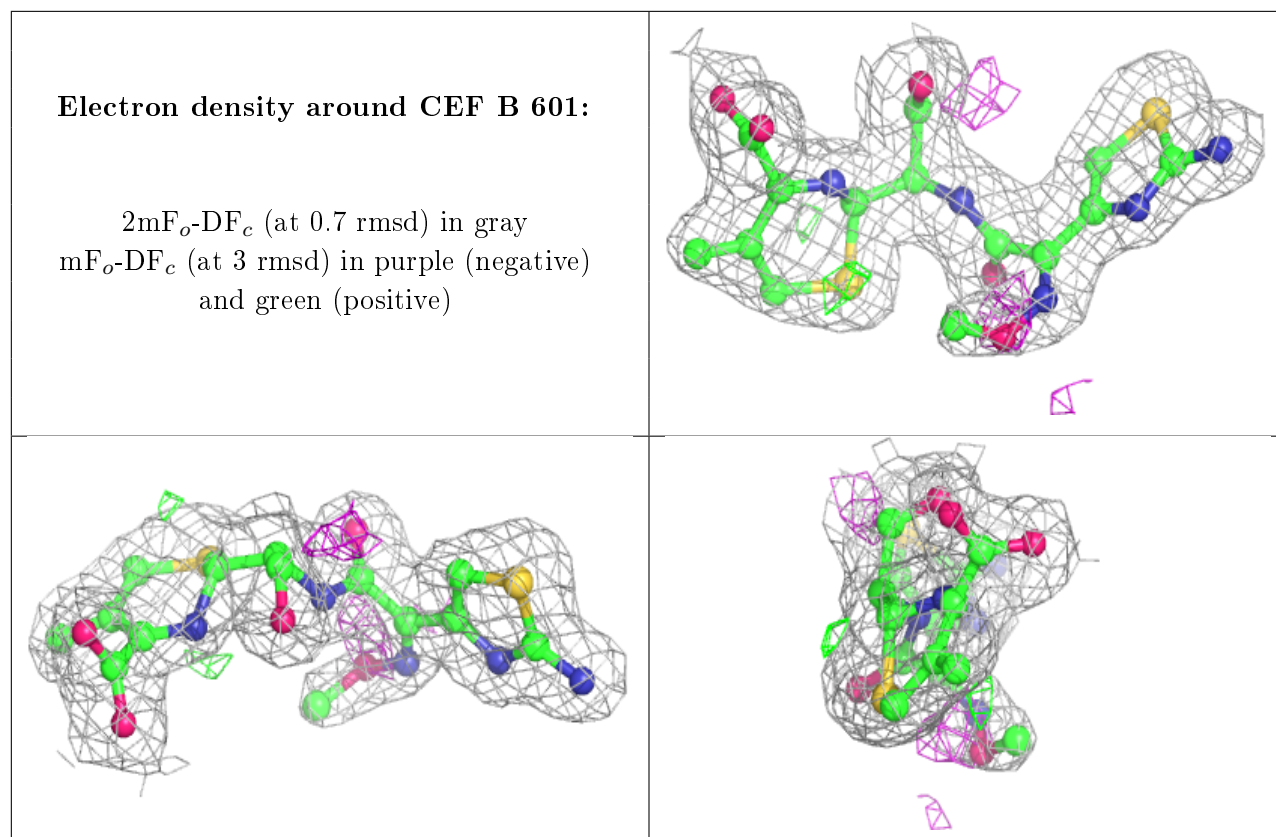
$2mF_o-DF_c$ (at 0.7 rmsd) in gray
 mF_o-DF_c (at 3 rmsd) in purple (negative)
and green (positive)



Electron density around NZV A 600:

$2mF_o-DF_c$ (at 0.7 rmsd) in gray
 mF_o-DF_c (at 3 rmsd) in purple (negative)
and green (positive)





6.5 Other polymers [i](#)

There are no such residues in this entry.