



Full wwPDB X-ray Structure Validation Report ⓘ

Jun 24, 2024 – 11:50 AM EDT

PDB ID : 6P55
Title : Crystal structure of transpeptidase domain of PBP2 from *Neisseria gonorrhoeae* acylated by cefixime
Authors : Singh, A.; Davies, C.
Deposited on : 2019-05-29
Resolution : 1.74 Å (reported)

This is a Full wwPDB X-ray Structure Validation Report for a publicly released PDB entry.

We welcome your comments at validation@mail.wwpdb.org

A user guide is available at

<https://www.wwpdb.org/validation/2017/XrayValidationReportHelp>

with specific help available everywhere you see the ⓘ symbol.

The types of validation reports are described at

<http://www.wwpdb.org/validation/2017/FAQs#types>.

The following versions of software and data (see [references ⓘ](#)) were used in the production of this report:

MolProbity : 4.02b-467
Mogul : 1.8.5 (274361), CSD as541be (2020)
Xtriage (Phenix) : 1.13
EDS : 2.37.1
buster-report : 1.1.7 (2018)
Percentile statistics : 20191225.v01 (using entries in the PDB archive December 25th 2019)
Refmac : 5.8.0158
CCP4 : 7.0.044 (Gargrove)
Ideal geometry (proteins) : Engh & Huber (2001)
Ideal geometry (DNA, RNA) : Parkinson et al. (1996)
Validation Pipeline (wwPDB-VP) : 2.37.1

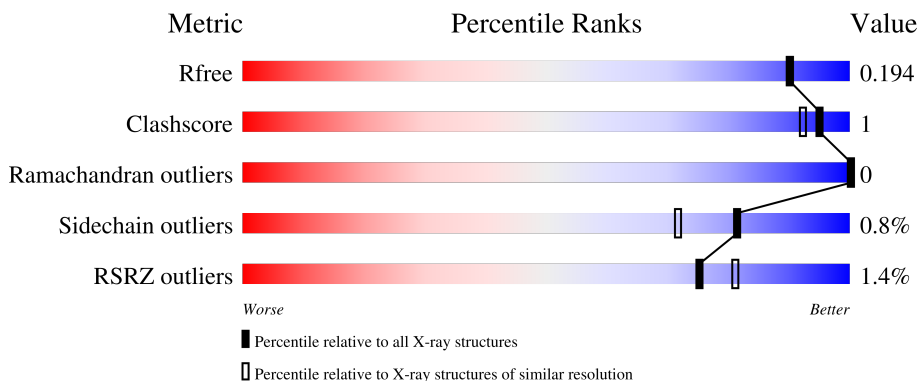
1 Overall quality at a glance

The following experimental techniques were used to determine the structure:

X-RAY DIFFRACTION

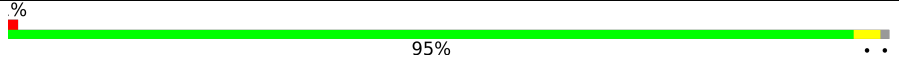
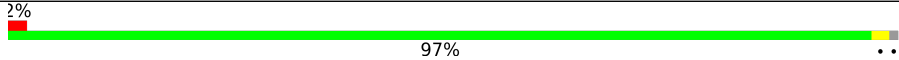
The reported resolution of this entry is 1.74 Å.

Percentile scores (ranging between 0-100) for global validation metrics of the entry are shown in the following graphic. The table shows the number of entries on which the scores are based.



Metric	Whole archive (#Entries)	Similar resolution (#Entries, resolution range(Å))
R_{free}	130704	3764 (1.76-1.72)
Clashscore	141614	3923 (1.76-1.72)
Ramachandran outliers	138981	3878 (1.76-1.72)
Sidechain outliers	138945	3878 (1.76-1.72)
RSRZ outliers	127900	3705 (1.76-1.72)

The table below summarises the geometric issues observed across the polymeric chains and their fit to the electron density. The red, orange, yellow and green segments of the lower bar indicate the fraction of residues that contain outliers for ≥ 3 , 2, 1 and 0 types of geometric quality criteria respectively. A grey segment represents the fraction of residues that are not modelled. The numeric value for each fraction is indicated below the corresponding segment, with a dot representing fractions $\leq 5\%$. The upper red bar (where present) indicates the fraction of residues that have poor fit to the electron density. The numeric value is given above the bar.

Mol	Chain	Length	Quality of chain
1	A	329	 95%
1	B	329	 97%

2 Entry composition [i](#)

There are 5 unique types of molecules in this entry. The entry contains 5462 atoms, of which 0 are hydrogens and 0 are deuteriums.

In the tables below, the ZeroOcc column contains the number of atoms modelled with zero occupancy, the AltConf column contains the number of residues with at least one atom in alternate conformation and the Trace column contains the number of residues modelled with at most 2 atoms.

- Molecule 1 is a protein called peptidoglycan D,D-transpeptidase PenA.

Mol	Chain	Residues	Atoms					ZeroOcc	AltConf	Trace
			Total	C	N	O	S			
1	A	326	Total	C	N	O	S	0	5	0
			2495	1584	443	461	7			
1	B	327	Total	C	N	O	S	0	4	0
			2498	1585	445	461	7			

There are 40 discrepancies between the modelled and reference sequences:

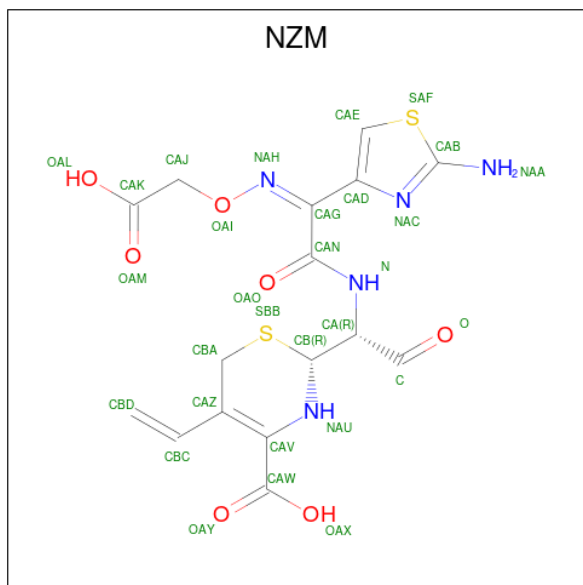
Chain	Residue	Modelled	Actual	Comment	Reference
A	232	GLY	-	expression tag	UNP P08149
A	233	SER	-	expression tag	UNP P08149
A	234	GLY	-	expression tag	UNP P08149
A	235	GLY	-	expression tag	UNP P08149
A	236	ALA	-	expression tag	UNP P08149
A	297	GLY	ALA	conflict	UNP P08149
A	?	-	TYR	deletion	UNP P08149
A	?	-	ASP	deletion	UNP P08149
A	?	-	PRO	deletion	UNP P08149
A	?	-	ASN	deletion	UNP P08149
A	?	-	ARG	deletion	UNP P08149
A	?	-	PRO	deletion	UNP P08149
A	?	-	GLY	deletion	UNP P08149
A	?	-	ARG	deletion	UNP P08149
A	?	-	ALA	deletion	UNP P08149
A	?	-	ASP	deletion	UNP P08149
A	?	-	SER	deletion	UNP P08149
A	?	-	GLU	deletion	UNP P08149
A	?	-	GLN	deletion	UNP P08149
A	?	-	ARG	deletion	UNP P08149
B	232	GLY	-	expression tag	UNP P08149
B	233	SER	-	expression tag	UNP P08149
B	234	GLY	-	expression tag	UNP P08149
B	235	GLY	-	expression tag	UNP P08149
B	236	ALA	-	expression tag	UNP P08149

Continued on next page...

Continued from previous page...

Chain	Residue	Modelled	Actual	Comment	Reference
B	297	GLY	ALA	conflict	UNP P08149
B	?	-	TYR	deletion	UNP P08149
B	?	-	ASP	deletion	UNP P08149
B	?	-	PRO	deletion	UNP P08149
B	?	-	ASN	deletion	UNP P08149
B	?	-	ARG	deletion	UNP P08149
B	?	-	PRO	deletion	UNP P08149
B	?	-	GLY	deletion	UNP P08149
B	?	-	ARG	deletion	UNP P08149
B	?	-	ALA	deletion	UNP P08149
B	?	-	ASP	deletion	UNP P08149
B	?	-	SER	deletion	UNP P08149
B	?	-	GLU	deletion	UNP P08149
B	?	-	GLN	deletion	UNP P08149
B	?	-	ARG	deletion	UNP P08149

- Molecule 2 is cefixime, bound form (three-letter code: NZM) (formula: C₁₆H₁₇N₅O₇S₂) (labeled as "Ligand of Interest" by depositor).



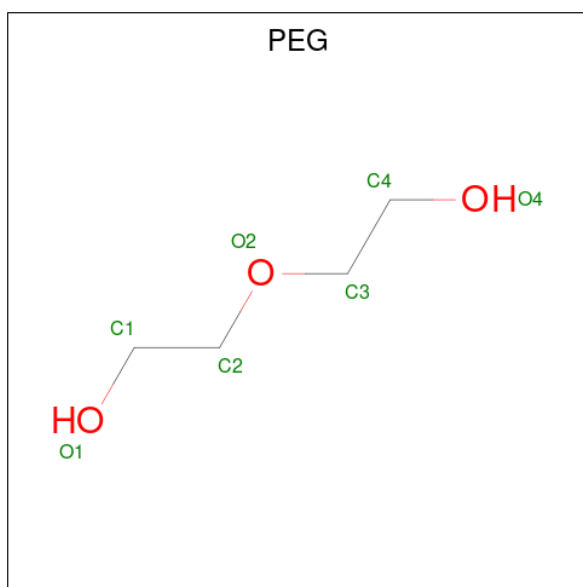
Mol	Chain	Residues	Atoms					ZeroOcc	AltConf
2	A	1	Total	C	N	O	S	0	0
			30	16	5	7	2		
2	B	1	Total	C	N	O	S	0	0
			30	16	5	7	2		

- Molecule 3 is PHOSPHATE ION (three-letter code: PO4) (formula: O₄P).



Mol	Chain	Residues	Atoms	ZeroOcc	AltConf
3	A	1	Total O P 5 4 1	0	0
3	A	1	Total O P 5 4 1	0	0
3	B	1	Total O P 5 4 1	0	0

- Molecule 4 is DI(HYDROXYETHYL)ETHER (three-letter code: PEG) (formula: C₄H₁₀O₃).



Mol	Chain	Residues	Atoms	ZeroOcc	AltConf
4	A	1	Total C O 7 4 3	0	0

Continued on next page...

Continued from previous page...

Mol	Chain	Residues	Atoms			ZeroOcc	AltConf
4	B	1	Total	C	O	0	0
			7	4	3		
4	B	1	Total	C	O	0	0
			7	4	3		

- Molecule 5 is water.

Mol	Chain	Residues	Atoms		ZeroOcc	AltConf
5	A	221	Total	O	0	0
			221	221		
5	B	152	Total	O	0	0
			152	152		

3 Residue-property plots [i](#)

These plots are drawn for all protein, RNA, DNA and oligosaccharide chains in the entry. The first graphic for a chain summarises the proportions of the various outlier classes displayed in the second graphic. The second graphic shows the sequence view annotated by issues in geometry and electron density. Residues are color-coded according to the number of geometric quality criteria for which they contain at least one outlier: green = 0, yellow = 1, orange = 2 and red = 3 or more. A red dot above a residue indicates a poor fit to the electron density ($RSRZ > 2$). Stretches of 2 or more consecutive residues without any outlier are shown as a green connector. Residues present in the sample, but not in the model, are shown in grey.

- Molecule 1: peptidoglycan D,D-transpeptidase PenA

Chain A:  95%



- Molecule 1: peptidoglycan D,D-transpeptidase PenA

Chain B:  97%



4 Data and refinement statistics

Property	Value	Source
Space group	P 1 21 1	Depositor
Cell constants a, b, c, α , β , γ	44.49Å 78.01Å 86.90Å 90.00° 90.54° 90.00°	Depositor
Resolution (Å)	44.49 – 1.74 44.49 – 1.74	Depositor EDS
% Data completeness (in resolution range)	99.7 (44.49-1.74) 99.7 (44.49-1.74)	Depositor EDS
R_{merge}	0.09	Depositor
R_{sym}	(Not available)	Depositor
$\langle I/\sigma(I) \rangle$ ¹	4.48 (at 1.74Å)	Xtrriage
Refinement program	REFMAC 5.8.0218	Depositor
R, R_{free}	0.160 , 0.188 0.169 , 0.194	Depositor DCC
R_{free} test set	3064 reflections (5.03%)	wwPDB-VP
Wilson B-factor (Å ²)	25.1	Xtrriage
Anisotropy	0.668	Xtrriage
Bulk solvent k_{sol} (e/Å ³), B_{sol} (Å ²)	0.36 , 43.9	EDS
L-test for twinning ²	$\langle L \rangle = 0.50$, $\langle L^2 \rangle = 0.33$	Xtrriage
Estimated twinning fraction	0.026 for h,-k,-l	Xtrriage
F_o, F_c correlation	0.97	EDS
Total number of atoms	5462	wwPDB-VP
Average B, all atoms (Å ²)	31.0	wwPDB-VP

Xtrriage's analysis on translational NCS is as follows: *The largest off-origin peak in the Patterson function is 6.22% of the height of the origin peak. No significant pseudotranslation is detected.*

¹Intensities estimated from amplitudes.

²Theoretical values of $\langle |L| \rangle$, $\langle L^2 \rangle$ for acentric reflections are 0.5, 0.333 respectively for untwinned datasets, and 0.375, 0.2 for perfectly twinned datasets.

5 Model quality

5.1 Standard geometry

Bond lengths and bond angles in the following residue types are not validated in this section: PEG, NZM, PO4

The Z score for a bond length (or angle) is the number of standard deviations the observed value is removed from the expected value. A bond length (or angle) with $|Z| > 5$ is considered an outlier worth inspection. RMSZ is the root-mean-square of all Z scores of the bond lengths (or angles).

Mol	Chain	Bond lengths		Bond angles	
		RMSZ	# Z >5	RMSZ	# Z >5
1	A	0.39	0/2562	0.64	0/3472
1	B	0.37	0/2562	0.60	0/3472
All	All	0.38	0/5124	0.62	0/6944

There are no bond length outliers.

There are no bond angle outliers.

There are no chirality outliers.

There are no planarity outliers.

5.2 Too-close contacts

In the following table, the Non-H and H(model) columns list the number of non-hydrogen atoms and hydrogen atoms in the chain respectively. The H(added) column lists the number of hydrogen atoms added and optimized by MolProbity. The Clashes column lists the number of clashes within the asymmetric unit, whereas Symm-Clashes lists symmetry-related clashes.

Mol	Chain	Non-H	H(model)	H(added)	Clashes	Symm-Clashes
1	A	2495	0	2542	7	0
1	B	2498	0	2538	5	0
2	A	30	0	0	0	0
2	B	30	0	0	0	0
3	A	10	0	0	0	0
3	B	5	0	0	0	0
4	A	7	0	10	0	0
4	B	14	0	20	0	0
5	A	221	0	0	1	0
5	B	152	0	0	0	0
All	All	5462	0	5110	12	0

The all-atom clashscore is defined as the number of clashes found per 1000 atoms (including hydrogen atoms). The all-atom clashscore for this structure is 1.

All (12) close contacts within the same asymmetric unit are listed below, sorted by their clash magnitude.

Atom-1	Atom-2	Interatomic distance (Å)	Clash overlap (Å)
1:B:405:ARG:NH1	1:B:414:GLU:OE1	2.40	0.55
1:A:272:THR:HG22	1:A:455:ALA:HA	1.91	0.53
1:A:428:LEU:HD22	1:A:534[A]:THR:HG22	1.91	0.52
1:A:319[B]:LYS:HD2	1:A:382:PHE:CG	2.51	0.46
1:B:264:THR:HG21	1:B:301:ALA:HA	1.97	0.46
1:A:264:THR:HG21	1:A:301:ALA:HA	1.97	0.46
1:B:264:THR:CG2	1:B:301:ALA:HB2	2.46	0.46
1:A:391:ARG:HG3	1:A:401:ALA:HB2	2.00	0.43
1:B:335:GLN:HE21	1:B:336:PRO:HD2	1.84	0.43
1:A:402:GLY:HA3	5:A:824:HOH:O	2.18	0.43
1:A:428:LEU:HD13	1:A:534[B]:THR:CG2	2.51	0.41
1:B:264:THR:HG21	1:B:301:ALA:CA	2.51	0.41

There are no symmetry-related clashes.

5.3 Torsion angles [i](#)

5.3.1 Protein backbone [i](#)

In the following table, the Percentiles column shows the percent Ramachandran outliers of the chain as a percentile score with respect to all X-ray entries followed by that with respect to entries of similar resolution.

The Analysed column shows the number of residues for which the backbone conformation was analysed, and the total number of residues.

Mol	Chain	Analysed	Favoured	Allowed	Outliers	Percentiles	
1	A	329/329 (100%)	325 (99%)	4 (1%)	0	100	100
1	B	329/329 (100%)	327 (99%)	2 (1%)	0	100	100
All	All	658/658 (100%)	652 (99%)	6 (1%)	0	100	100

There are no Ramachandran outliers to report.

5.3.2 Protein sidechains [i](#)

In the following table, the Percentiles column shows the percent sidechain outliers of the chain as a percentile score with respect to all X-ray entries followed by that with respect to entries of similar resolution.

The Analysed column shows the number of residues for which the sidechain conformation was analysed, and the total number of residues.

Mol	Chain	Analysed	Rotameric	Outliers	Percentiles	
1	A	261/257 (102%)	259 (99%)	2 (1%)	81	72
1	B	260/257 (101%)	258 (99%)	2 (1%)	81	72
All	All	521/514 (101%)	517 (99%)	4 (1%)	81	72

All (4) residues with a non-rotameric sidechain are listed below:

Mol	Chain	Res	Type
1	A	272	THR
1	A	459	LYS
1	B	411	ARG
1	B	426	LEU

Sometimes sidechains can be flipped to improve hydrogen bonding and reduce clashes. All (7) such sidechains are listed below:

Mol	Chain	Res	Type
1	A	335	GLN
1	A	360	GLN
1	A	452	GLN
1	A	526	ASN
1	A	541	HIS
1	B	335	GLN
1	B	425	GLN

5.3.3 RNA [i](#)

There are no RNA molecules in this entry.

5.4 Non-standard residues in protein, DNA, RNA chains [i](#)

There are no non-standard protein/DNA/RNA residues in this entry.

5.5 Carbohydrates [i](#)

There are no monosaccharides in this entry.

5.6 Ligand geometry [i](#)

8 ligands are modelled in this entry.

In the following table, the Counts columns list the number of bonds (or angles) for which Mogul statistics could be retrieved, the number of bonds (or angles) that are observed in the model and the number of bonds (or angles) that are defined in the Chemical Component Dictionary. The Link column lists molecule types, if any, to which the group is linked. The Z score for a bond length (or angle) is the number of standard deviations the observed value is removed from the expected value. A bond length (or angle) with $|Z| > 2$ is considered an outlier worth inspection. RMSZ is the root-mean-square of all Z scores of the bond lengths (or angles).

Mol	Type	Chain	Res	Link	Bond lengths			Bond angles		
					Counts	RMSZ	# Z > 2	Counts	RMSZ	# Z > 2
4	PEG	B	604	-	6,6,6	0.47	0	5,5,5	0.17	0
2	NZM	A	601	1	23,31,31	2.36	6 (26%)	20,42,42	3.33	7 (35%)
3	PO4	A	603	-	4,4,4	0.92	0	6,6,6	0.44	0
3	PO4	A	602	-	4,4,4	0.97	0	6,6,6	0.45	0
4	PEG	A	604	-	6,6,6	0.43	0	5,5,5	0.28	0
4	PEG	B	603	-	6,6,6	0.39	0	5,5,5	0.30	0
3	PO4	B	602	-	4,4,4	1.04	0	6,6,6	0.62	0
2	NZM	B	601	1	23,31,31	2.19	3 (13%)	20,42,42	3.61	8 (40%)

In the following table, the Chirals column lists the number of chiral outliers, the number of chiral centers analysed, the number of these observed in the model and the number defined in the Chemical Component Dictionary. Similar counts are reported in the Torsion and Rings columns. '-' means no outliers of that kind were identified.

Mol	Type	Chain	Res	Link	Chirals	Torsions	Rings
2	NZM	B	601	1	-	7/20/43/43	0/1/2/2
4	PEG	A	604	-	-	1/4/4/4	-
4	PEG	B	603	-	-	1/4/4/4	-
2	NZM	A	601	1	-	4/20/43/43	0/1/2/2
4	PEG	B	604	-	-	1/4/4/4	-

All (9) bond length outliers are listed below:

Mol	Chain	Res	Type	Atoms	Z	Observed(Å)	Ideal(Å)
2	A	601	NZM	OAI-NAH	-8.64	1.26	1.42

Continued on next page...

Continued from previous page...

Mol	Chain	Res	Type	Atoms	Z	Observed(Å)	Ideal(Å)
2	B	601	NZM	OAI-NAH	-8.09	1.27	1.42
2	B	601	NZM	CBC-CAZ	3.91	1.49	1.46
2	A	601	NZM	CBC-CAZ	3.31	1.49	1.46
2	A	601	NZM	CAE-SAF	3.01	1.75	1.70
2	B	601	NZM	CBA-SBB	-2.61	1.76	1.82
2	A	601	NZM	CBA-CAZ	2.54	1.53	1.50
2	A	601	NZM	CBA-SBB	-2.44	1.76	1.82
2	A	601	NZM	CAG-CAN	-2.39	1.46	1.50

All (15) bond angle outliers are listed below:

Mol	Chain	Res	Type	Atoms	Z	Observed(°)	Ideal(°)
2	B	601	NZM	CAJ-OAI-NAH	12.08	120.20	107.84
2	A	601	NZM	CAJ-OAI-NAH	10.88	118.98	107.84
2	B	601	NZM	CB-CA-N	6.13	123.33	109.98
2	A	601	NZM	CB-CA-N	5.23	121.38	109.98
2	A	601	NZM	CB-NAU-CAV	5.03	130.16	118.32
2	B	601	NZM	CB-NAU-CAV	4.35	128.56	118.32
2	B	601	NZM	CAW-CAV-CAZ	3.83	126.62	122.79
2	A	601	NZM	CAW-CAV-CAZ	3.52	126.31	122.79
2	B	601	NZM	CBC-CAZ-CAV	-3.23	119.36	122.11
2	B	601	NZM	CAD-CAE-SAF	2.96	115.43	111.79
2	B	601	NZM	CBA-SBB-CB	2.89	100.14	94.47
2	A	601	NZM	CBA-SBB-CB	2.83	100.03	94.47
2	B	601	NZM	CBD-CBC-CAZ	-2.27	123.19	126.14
2	A	601	NZM	CBD-CBC-CAZ	-2.22	123.25	126.14
2	A	601	NZM	OAX-CAW-OAY	-2.20	118.56	123.61

There are no chirality outliers.

All (14) torsion outliers are listed below:

Mol	Chain	Res	Type	Atoms
2	A	601	NZM	NAU-CAV-CAW-OAX
2	A	601	NZM	NAU-CAV-CAW-OAY
2	B	601	NZM	NAU-CAV-CAW-OAX
2	B	601	NZM	NAU-CAV-CAW-OAY
4	A	604	PEG	O1-C1-C2-O2
2	B	601	NZM	OAI-CAJ-CAK-OAL
2	B	601	NZM	OAI-CAJ-CAK-OAM
2	A	601	NZM	NAH-CAG-CAN-OAO
4	B	604	PEG	C4-C3-O2-C2
4	B	603	PEG	O1-C1-C2-O2

Continued on next page...

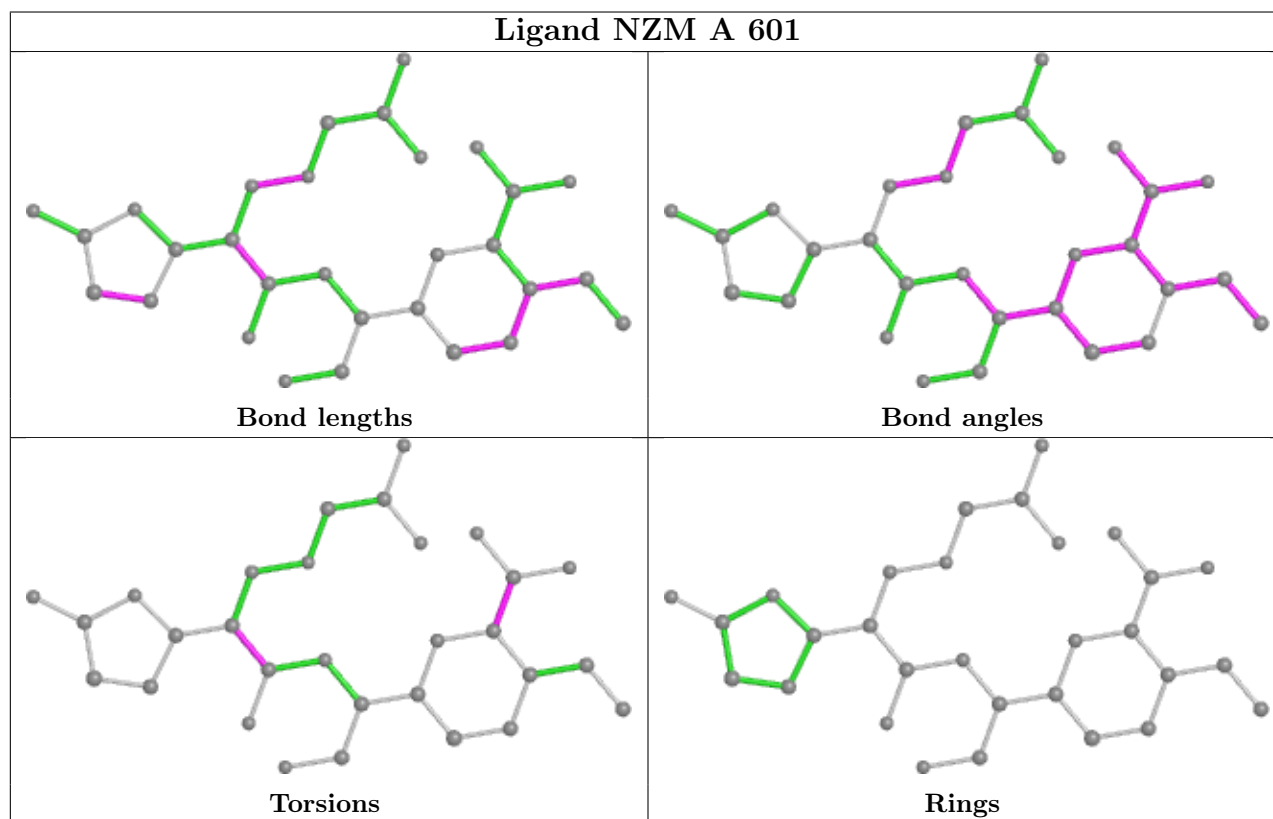
Continued from previous page...

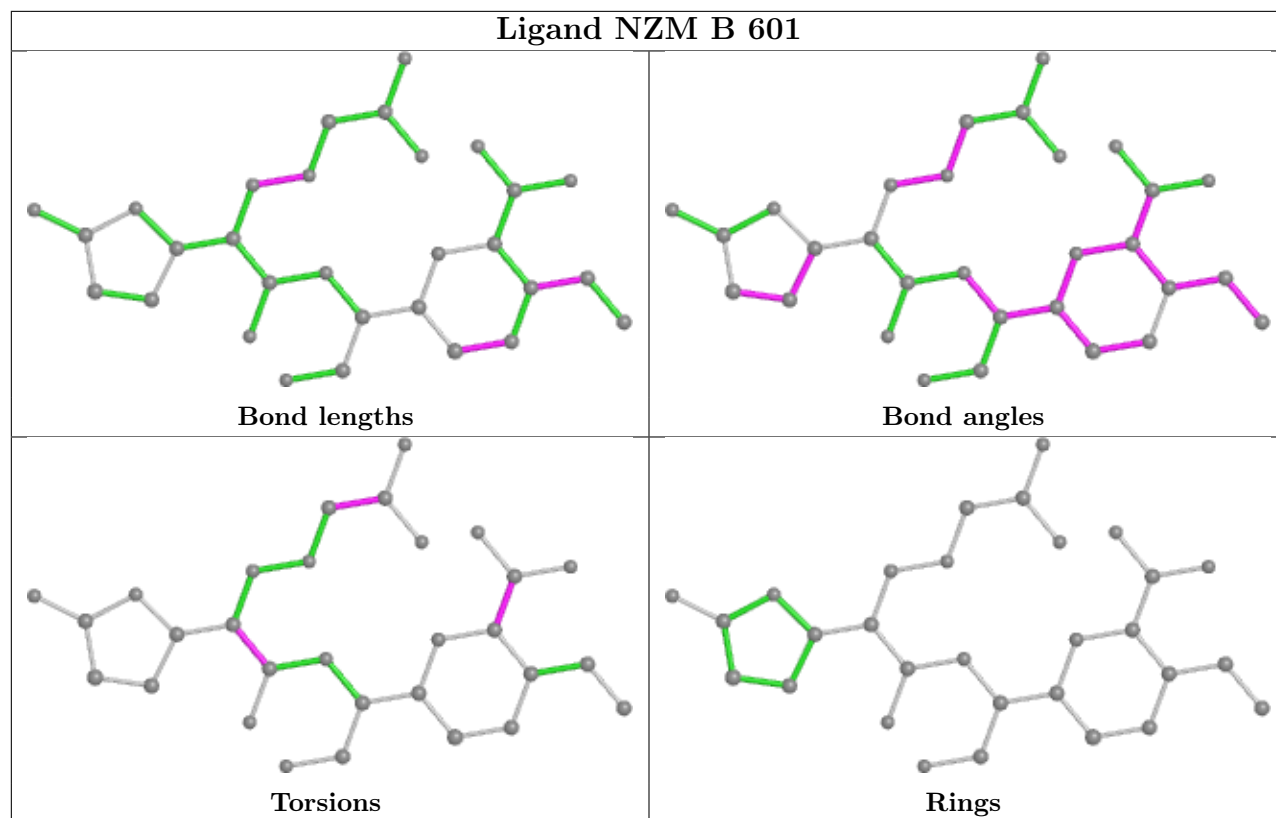
Mol	Chain	Res	Type	Atoms
2	A	601	NZM	NAH-CAG-CAN-N
2	B	601	NZM	NAH-CAG-CAN-N
2	B	601	NZM	CAZ-CAV-CAW-OAY
2	B	601	NZM	NAH-CAG-CAN-OAO

There are no ring outliers.

No monomer is involved in short contacts.

The following is a two-dimensional graphical depiction of Mogul quality analysis of bond lengths, bond angles, torsion angles, and ring geometry for all instances of the Ligand of Interest. In addition, ligands with molecular weight > 250 and outliers as shown on the validation Tables will also be included. For torsion angles, if less than 5% of the Mogul distribution of torsion angles is within 10 degrees of the torsion angle in question, then that torsion angle is considered an outlier. Any bond that is central to one or more torsion angles identified as an outlier by Mogul will be highlighted in the graph. For rings, the root-mean-square deviation (RMSD) between the ring in question and similar rings identified by Mogul is calculated over all ring torsion angles. If the average RMSD is greater than 60 degrees and the minimal RMSD between the ring in question and any Mogul-identified rings is also greater than 60 degrees, then that ring is considered an outlier. The outliers are highlighted in purple. The color gray indicates Mogul did not find sufficient equivalents in the CSD to analyse the geometry.





5.7 Other polymers [i](#)

There are no such residues in this entry.

5.8 Polymer linkage issues [i](#)

There are no chain breaks in this entry.

6 Fit of model and data [i](#)

6.1 Protein, DNA and RNA chains [i](#)

In the following table, the column labelled ‘#RSRZ> 2’ contains the number (and percentage) of RSRZ outliers, followed by percent RSRZ outliers for the chain as percentile scores relative to all X-ray entries and entries of similar resolution. The OWAB column contains the minimum, median, 95th percentile and maximum values of the occupancy-weighted average B-factor per residue. The column labelled ‘Q< 0.9’ lists the number of (and percentage) of residues with an average occupancy less than 0.9.

Mol	Chain	Analysed	<RSRZ>	#RSRZ>2	OWAB(Å ²)	Q<0.9
1	A	326/329 (99%)	-0.38	2 (0%) 89 92	20, 26, 38, 53	0
1	B	327/329 (99%)	-0.17	7 (2%) 63 70	23, 31, 48, 65	0
All	All	653/658 (99%)	-0.28	9 (1%) 75 81	20, 29, 45, 65	0

All (9) RSRZ outliers are listed below:

Mol	Chain	Res	Type	RSRZ
1	B	506	ASN	4.4
1	B	454	VAL	4.4
1	B	505	VAL	4.3
1	B	239	LEU	3.0
1	A	235	GLY	2.7
1	B	508	ARG	2.7
1	A	412	PRO	2.7
1	B	453	ALA	2.6
1	B	235	GLY	2.0

6.2 Non-standard residues in protein, DNA, RNA chains [i](#)

There are no non-standard protein/DNA/RNA residues in this entry.

6.3 Carbohydrates [i](#)

There are no monosaccharides in this entry.

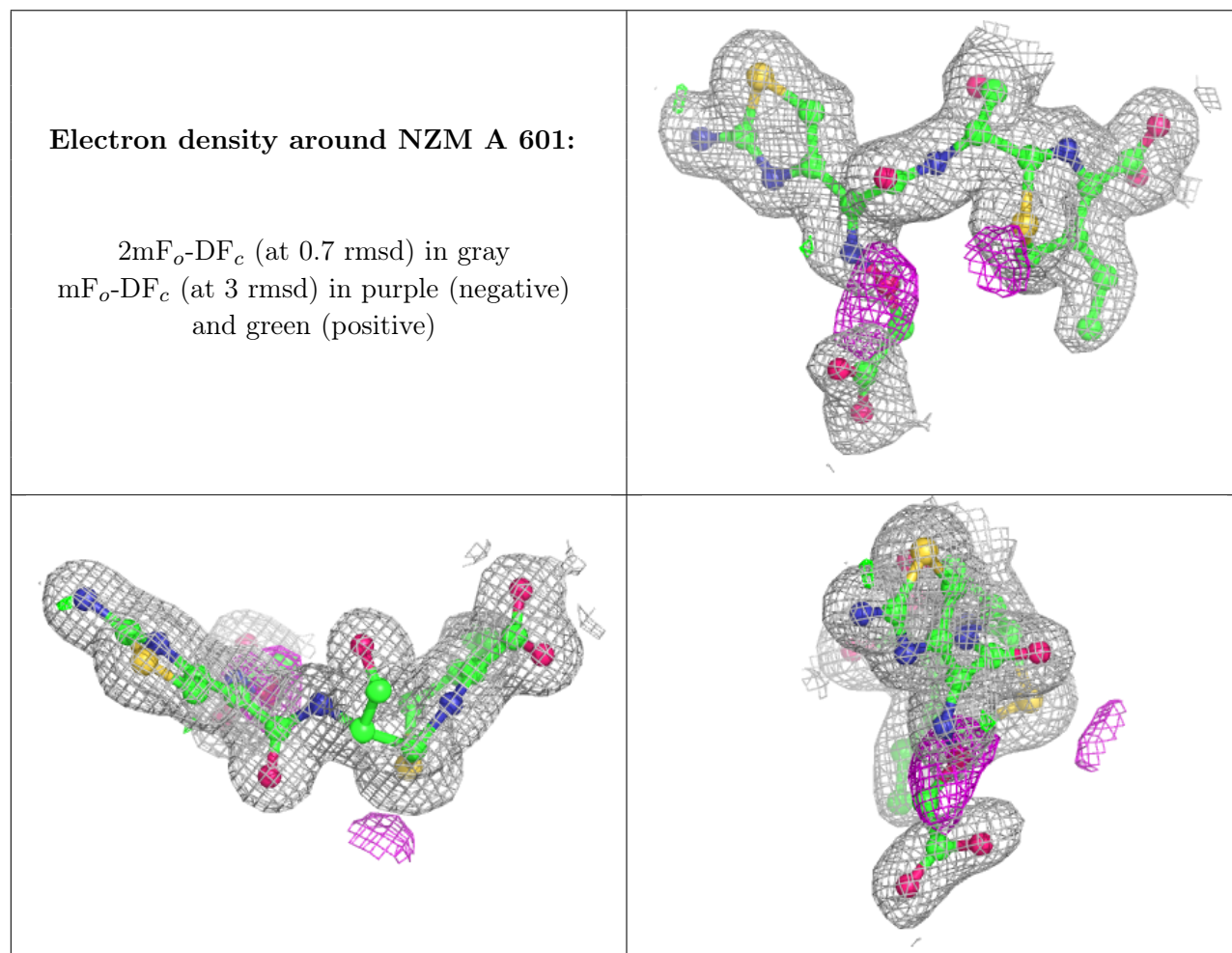
6.4 Ligands [i](#)

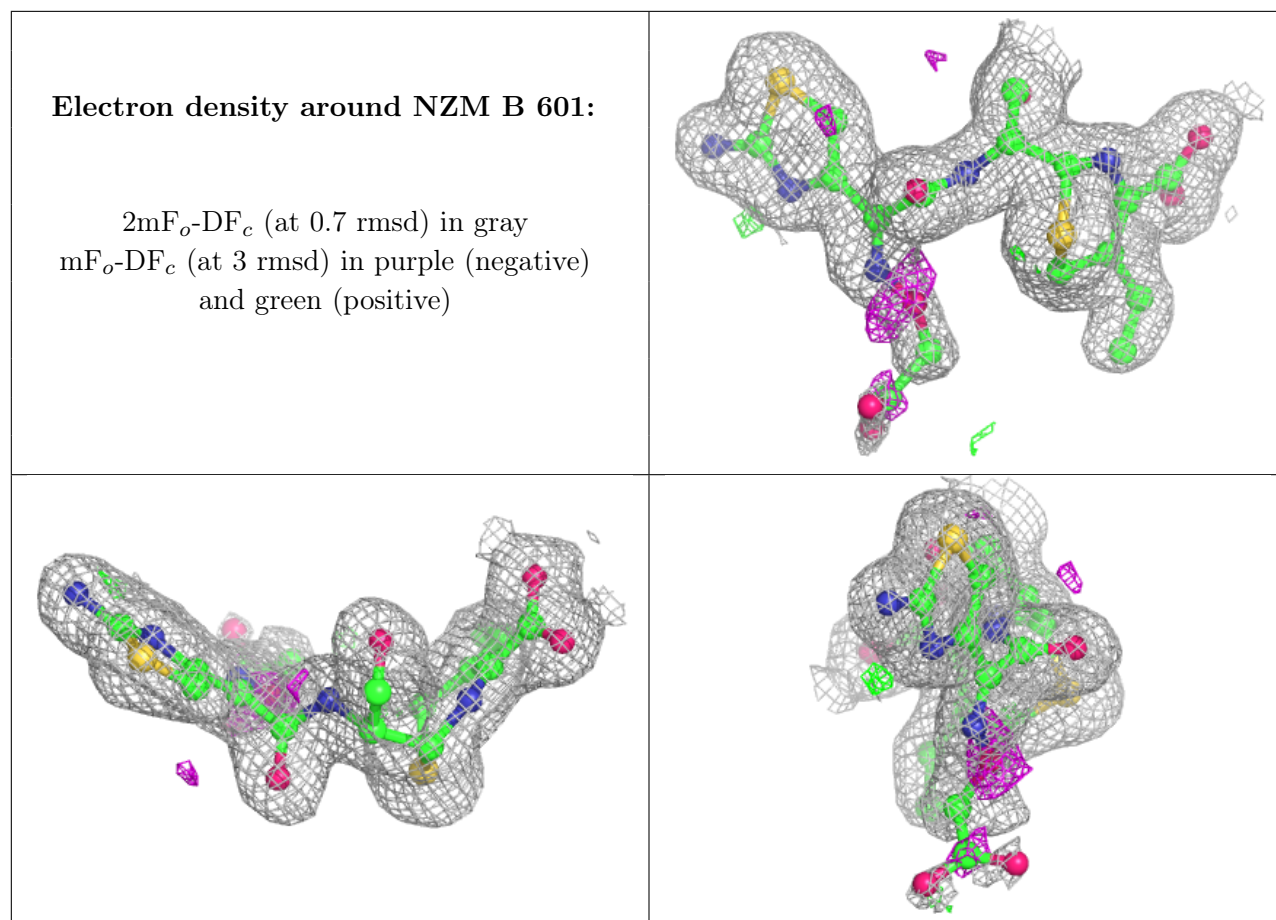
In the following table, the Atoms column lists the number of modelled atoms in the group and the number defined in the chemical component dictionary. The B-factors column lists the minimum,

median, 95th percentile and maximum values of B factors of atoms in the group. The column labelled 'Q< 0.9' lists the number of atoms with occupancy less than 0.9.

Mol	Type	Chain	Res	Atoms	RSCC	RSR	B-factors(Å ²)	Q<0.9
3	PO4	A	603	5/5	0.84	0.14	66,70,72,73	5
4	PEG	A	604	7/7	0.85	0.13	45,49,50,54	0
4	PEG	B	603	7/7	0.89	0.14	50,52,53,53	0
4	PEG	B	604	7/7	0.90	0.12	56,57,59,59	0
3	PO4	B	602	5/5	0.93	0.16	49,49,53,53	5
3	PO4	A	602	5/5	0.95	0.10	54,54,56,57	5
2	NZM	A	601	30/30	0.95	0.09	21,23,43,44	0
2	NZM	B	601	30/30	0.95	0.10	25,28,56,57	0

The following is a graphical depiction of the model fit to experimental electron density of all instances of the Ligand of Interest. In addition, ligands with molecular weight > 250 and outliers as shown on the geometry validation Tables will also be included. Each fit is shown from different orientation to approximate a three-dimensional view.





6.5 Other polymers [\(i\)](#)

There are no such residues in this entry.