



Full wwPDB X-ray Structure Validation Report ⓘ

Oct 22, 2024 – 02:06 AM EDT

PDB ID : 3P9Q
Title : Structure of I274C variant of E. coli KatE
Authors : Loewen, P.C.; Jha, V.; Louis, S.; Chelikani, P.; Carpena, X.; Fita, I.
Deposited on : 2010-10-18
Resolution : 1.48 Å(reported)

This is a Full wwPDB X-ray Structure Validation Report for a publicly released PDB entry.

We welcome your comments at validation@mail.wwpdb.org

A user guide is available at

<https://www.wwpdb.org/validation/2017/XrayValidationReportHelp>

with specific help available everywhere you see the ⓘ symbol.

The types of validation reports are described at

<http://www.wwpdb.org/validation/2017/FAQs#types>.

The following versions of software and data (see [references ⓘ](#)) were used in the production of this report:

MolProbity : 4.02b-467
Mogul : 2022.3.0, CSD as543be (2022)
Xtriage (Phenix) : 1.20.1
EDS : 3.0
buster-report : 1.1.7 (2018)
Percentile statistics : 20231227.v01 (using entries in the PDB archive December 27th 2023)
CCP4 : 9.0.003 (Gargrove)
Density-Fitness : 1.0.11
Ideal geometry (proteins) : Engh & Huber (2001)
Ideal geometry (DNA, RNA) : Parkinson et al. (1996)
Validation Pipeline (wwPDB-VP) : 2.39

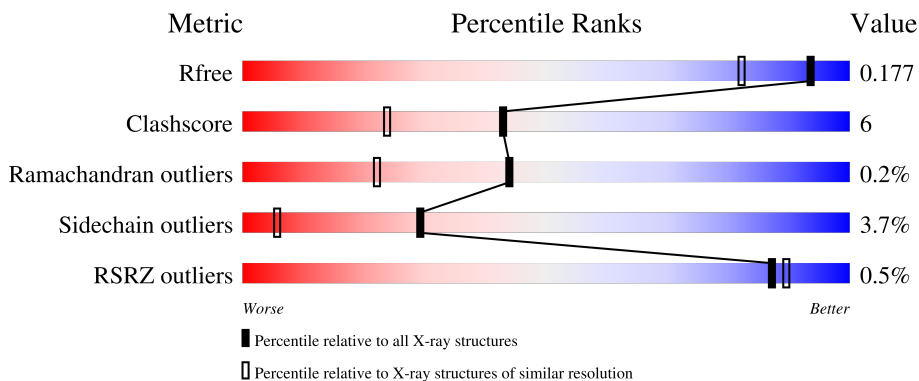
1 Overall quality at a glance

The following experimental techniques were used to determine the structure:

X-RAY DIFFRACTION

The reported resolution of this entry is 1.48 Å.

Percentile scores (ranging between 0-100) for global validation metrics of the entry are shown in the following graphic. The table shows the number of entries on which the scores are based.



Metric	Whole archive (#Entries)	Similar resolution (#Entries, resolution range(Å))
R_{free}	164625	6131 (1.50-1.46)
Clashscore	180529	6623 (1.50-1.46)
Ramachandran outliers	177936	6521 (1.50-1.46)
Sidechain outliers	177891	6518 (1.50-1.46)
RSRZ outliers	164620	6132 (1.50-1.46)

The table below summarises the geometric issues observed across the polymeric chains and their fit to the electron density. The red, orange, yellow and green segments of the lower bar indicate the fraction of residues that contain outliers for ≥ 3 , 2, 1 and 0 types of geometric quality criteria respectively. A grey segment represents the fraction of residues that are not modelled. The numeric value for each fraction is indicated below the corresponding segment, with a dot representing fractions $\leq 5\%$. The upper red bar (where present) indicates the fraction of residues that have poor fit to the electron density. The numeric value is given above the bar.

Mol	Chain	Length	Quality of chain
1	A	753	
1	B	753	
1	C	753	
1	D	753	

The following table lists non-polymeric compounds, carbohydrate monomers and non-standard

residues in protein, DNA, RNA chains that are outliers for geometric or electron-density-fit criteria:

Mol	Type	Chain	Res	Chirality	Geometry	Clashes	Electron density
3	HDE	A	761[B]	X	-	-	-
4	H2S	A	754[A]	-	-	X	-
4	H2S	B	754[A]	-	-	X	-
4	H2S	C	754[A]	-	-	X	-
4	H2S	D	754[A]	-	-	X	-

2 Entry composition

There are 5 unique types of molecules in this entry. The entry contains 26893 atoms, of which 0 are hydrogens and 0 are deuteriums.

In the tables below, the ZeroOcc column contains the number of atoms modelled with zero occupancy, the AltConf column contains the number of residues with at least one atom in alternate conformation and the Trace column contains the number of residues modelled with at most 2 atoms.

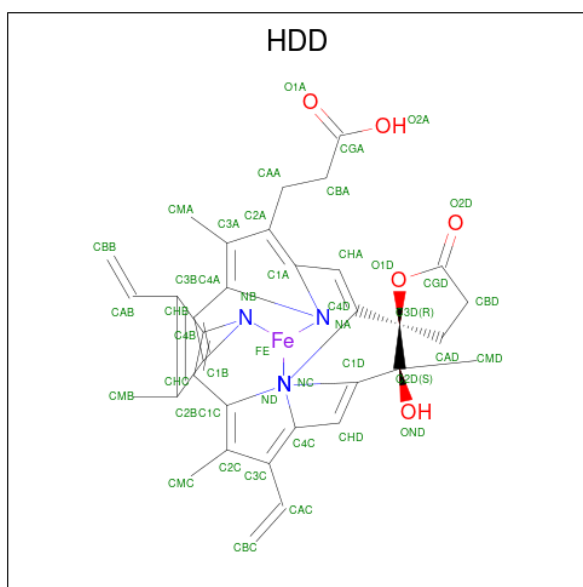
- Molecule 1 is a protein called Catalase HP11.

Mol	Chain	Residues	Atoms					ZeroOcc	AltConf	Trace
			Total	C	N	O	S			
1	A	726	5755	3652	1009	1083	11	0	5	0
1	B	726	5757	3654	1009	1083	11	0	5	0
1	C	726	5760	3658	1010	1081	11	0	4	0
1	D	726	5769	3661	1012	1085	11	0	8	0

There are 12 discrepancies between the modelled and reference sequences:

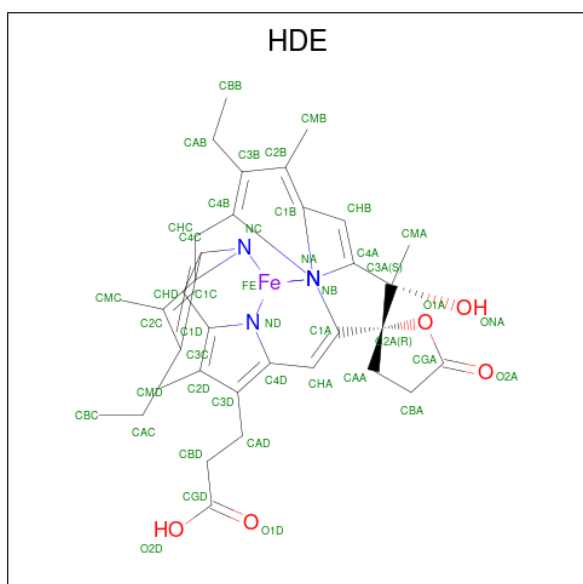
Chain	Residue	Modelled	Actual	Comment	Reference
A	274	CYS	ILE	engineered mutation	UNP P21179
A	438	ALA	CYS	engineered mutation	UNP P21179
A	669	ALA	CYS	engineered mutation	UNP P21179
B	274	CYS	ILE	engineered mutation	UNP P21179
B	438	ALA	CYS	engineered mutation	UNP P21179
B	669	ALA	CYS	engineered mutation	UNP P21179
C	274	CYS	ILE	engineered mutation	UNP P21179
C	438	ALA	CYS	engineered mutation	UNP P21179
C	669	ALA	CYS	engineered mutation	UNP P21179
D	274	CYS	ILE	engineered mutation	UNP P21179
D	438	ALA	CYS	engineered mutation	UNP P21179
D	669	ALA	CYS	engineered mutation	UNP P21179

- Molecule 2 is CIS-HEME D HYDROXYCHLORIN GAMMA-SPIROLACTONE (three-letter code: HDD) (formula: C₃₄H₃₂FeN₄O₅).



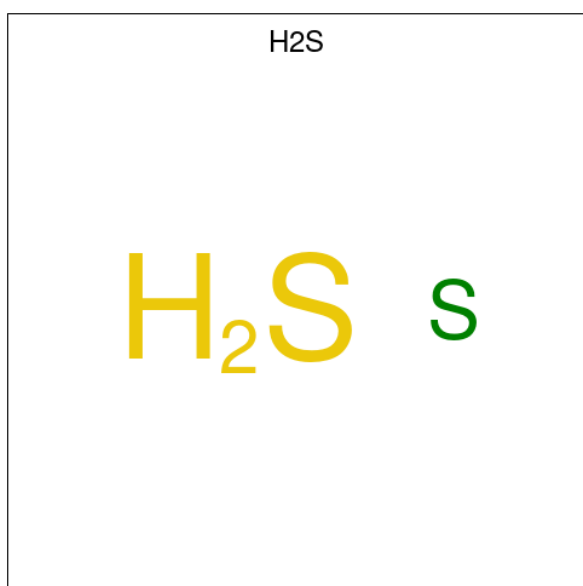
Mol	Chain	Residues	Atoms				ZeroOcc	AltConf	
2	A	1	Total	C	Fe	N	O	0	1
			44	34	1	4	5		
2	B	1	Total	C	Fe	N	O	0	1
			44	34	1	4	5		
2	C	1	Total	C	Fe	N	O	0	1
			44	34	1	4	5		
2	D	1	Total	C	Fe	N	O	0	1
			44	34	1	4	5		

- Molecule 3 is CIS-HEME D HYDROXYCHLORIN GAMMA-SPIROLACTONE 17R, 18S (three-letter code: HDE) (formula: $C_{34}H_{38}FeN_4O_5$).



Mol	Chain	Residues	Atoms				ZeroOcc	AltConf	
3	A	1	Total	C	Fe	N	O	0	1
			44	34	1	4	5		
3	B	1	Total	C	Fe	N	O	0	1
			44	34	1	4	5		
3	C	1	Total	C	Fe	N	O	0	1
			44	34	1	4	5		
3	D	1	Total	C	Fe	N	O	0	1
			44	34	1	4	5		

- Molecule 4 is HYDROSULFURIC ACID (three-letter code: H2S) (formula: H₂S).



Mol	Chain	Residues	Atoms		ZeroOcc	AltConf
4	A	1	Total	S	0	1
			1	1		
4	B	1	Total	S	0	1
			1	1		
4	C	1	Total	S	0	1
			1	1		
4	D	1	Total	S	0	1
			1	1		

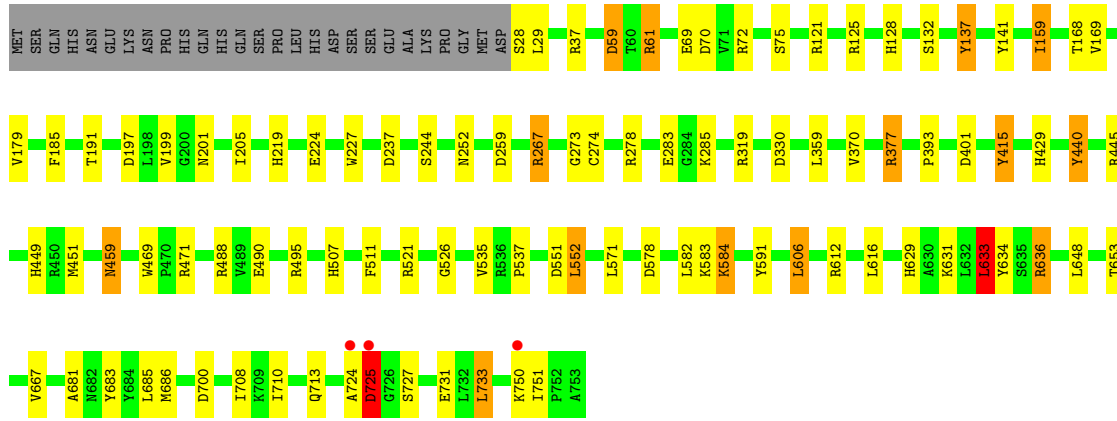
- Molecule 5 is water.

Mol	Chain	Residues	Atoms		ZeroOcc	AltConf
5	A	895	Total	O	0	0
			895	895		
5	B	803	Total	O	0	0
			803	803		

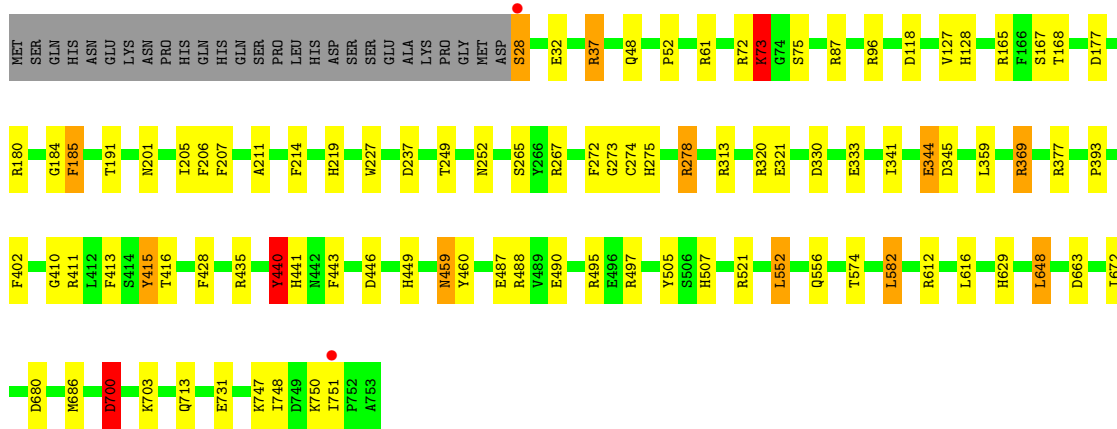
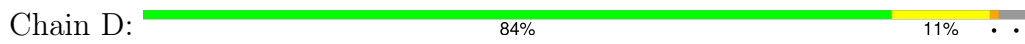
Continued on next page...

Continued from previous page...

Mol	Chain	Residues	Atoms		ZeroOcc	AltConf
5	C	865	Total 865	O 865	0	0
5	D	933	Total 933	O 933	0	0



• Molecule 1: Catalase HP1I



4 Data and refinement statistics

Property	Value	Source
Space group	P 1 21 1	Depositor
Cell constants a, b, c, α , β , γ	93.66Å 133.02Å 122.59Å 90.00° 109.59° 90.00°	Depositor
Resolution (Å)	28.55 – 1.48 28.55 – 1.48	Depositor EDS
% Data completeness (in resolution range)	91.7 (28.55-1.48) 91.7 (28.55-1.48)	Depositor EDS
R_{merge}	(Not available)	Depositor
R_{sym}	0.08	Depositor
$\langle I/\sigma(I) \rangle$ ¹	1.97 (at 1.48Å)	Xtrriage
Refinement program	REFMAC	Depositor
R, R_{free}	0.143 , 0.177 0.143 , 0.177	Depositor DCC
R_{free} test set	21507 reflections (5.00%)	wwPDB-VP
Wilson B-factor (Å ²)	10.7	Xtrriage
Anisotropy	0.045	Xtrriage
Bulk solvent k_{sol} (e/Å ³), B_{sol} (Å ²)	0.32 , 35.8	EDS
L-test for twinning ²	$\langle L \rangle = 0.50$, $\langle L^2 \rangle = 0.33$	Xtrriage
Estimated twinning fraction	0.016 for h,-k,-h-l	Xtrriage
F_o, F_c correlation	0.97	EDS
Total number of atoms	26893	wwPDB-VP
Average B, all atoms (Å ²)	14.0	wwPDB-VP

Xtrriage's analysis on translational NCS is as follows: *The largest off-origin peak in the Patterson function is 3.42% of the height of the origin peak. No significant pseudotranslation is detected.*

¹Intensities estimated from amplitudes.

²Theoretical values of $\langle |L| \rangle$, $\langle L^2 \rangle$ for acentric reflections are 0.5, 0.333 respectively for untwinned datasets, and 0.375, 0.2 for perfectly twinned datasets.

5 Model quality i

5.1 Standard geometry i

Bond lengths and bond angles in the following residue types are not validated in this section: HDE, HDD, H2S

The Z score for a bond length (or angle) is the number of standard deviations the observed value is removed from the expected value. A bond length (or angle) with $|Z| > 5$ is considered an outlier worth inspection. RMSZ is the root-mean-square of all Z scores of the bond lengths (or angles).

Mol	Chain	Bond lengths		Bond angles	
		RMSZ	# Z >5	RMSZ	# Z >5
1	A	1.37	11/5932 (0.2%)	1.22	34/8064 (0.4%)
1	B	1.32	15/5931 (0.3%)	1.20	43/8062 (0.5%)
1	C	1.30	18/5932 (0.3%)	1.20	33/8065 (0.4%)
1	D	1.40	24/5957 (0.4%)	1.23	33/8098 (0.4%)
All	All	1.35	68/23752 (0.3%)	1.21	143/32289 (0.4%)

Chiral center outliers are detected by calculating the chiral volume of a chiral center and verifying if the center is modelled as a planar moiety or with the opposite hand. A planarity outlier is detected by checking planarity of atoms in a peptide group, atoms in a mainchain group or atoms of a sidechain that are expected to be planar.

Mol	Chain	#Chirality outliers	#Planarity outliers
1	A	0	1
1	B	0	1
1	C	1	3
All	All	1	5

All (68) bond length outliers are listed below:

Mol	Chain	Res	Type	Atoms	Z	Observed(Å)	Ideal(Å)
1	A	321	GLU	CD-OE1	9.75	1.36	1.25
1	D	28	SER	CB-OG	9.68	1.54	1.42
1	D	321	GLU	CD-OE1	8.88	1.35	1.25
1	C	59	ASP	CB-CG	8.65	1.70	1.51
1	D	440	TYR	CE1-CZ	7.54	1.48	1.38
1	B	37	ARG	CZ-NH2	7.37	1.42	1.33
1	D	333	GLU	CD-OE2	-7.02	1.18	1.25
1	A	460	TYR	CE1-CZ	6.97	1.47	1.38
1	B	521	ARG	CG-CD	6.90	1.69	1.51
1	D	206	PHE	CD1-CE1	6.88	1.53	1.39
1	A	29	LEU	N-CA	-6.61	1.33	1.46

Continued on next page...

Continued from previous page...

Mol	Chain	Res	Type	Atoms	Z	Observed(Å)	Ideal(Å)
1	C	59	ASP	CG-OD1	6.41	1.40	1.25
1	C	377	ARG	CZ-NH1	6.32	1.41	1.33
1	D	214	PHE	CE2-CZ	6.30	1.49	1.37
1	B	333	GLU	CD-OE1	-6.30	1.18	1.25
1	D	369	ARG	CG-CD	6.18	1.67	1.51
1	B	272	PHE	CE2-CZ	6.18	1.49	1.37
1	C	495	ARG	CZ-NH1	6.10	1.41	1.33
1	D	415	TYR	CE1-CZ	6.08	1.46	1.38
1	B	415	TYR	CE2-CZ	5.90	1.46	1.38
1	D	377	ARG	CZ-NH2	5.90	1.40	1.33
1	C	244	SER	CA-CB	5.75	1.61	1.52
1	C	377	ARG	CZ-NH2	5.74	1.40	1.33
1	C	415	TYR	CE2-CZ	5.74	1.46	1.38
1	B	37	ARG	CG-CD	5.70	1.66	1.51
1	D	505	TYR	CD1-CE1	5.68	1.47	1.39
1	C	591	TYR	CD2-CE2	5.65	1.47	1.39
1	C	132	SER	CB-OG	5.57	1.49	1.42
1	B	98	GLY	N-CA	5.57	1.54	1.46
1	D	272	PHE	CE2-CZ	5.56	1.48	1.37
1	A	350	ASP	CB-CG	-5.56	1.40	1.51
1	C	667	VAL	CB-CG2	5.46	1.64	1.52
1	C	179	VAL	CB-CG2	5.40	1.64	1.52
1	D	443	PHE	CE2-CZ	5.38	1.47	1.37
1	C	683	TYR	CE2-CZ	5.37	1.45	1.38
1	D	413	PHE	CG-CD1	5.37	1.46	1.38
1	A	190	TYR	CG-CD2	5.33	1.46	1.39
1	D	402	PHE	CE1-CZ	5.32	1.47	1.37
1	B	377	ARG	CG-CD	-5.32	1.38	1.51
1	A	331	PHE	CD1-CE1	5.29	1.49	1.39
1	C	370	VAL	CA-CB	5.29	1.65	1.54
1	C	526	GLY	N-CA	5.28	1.53	1.46
1	B	505	TYR	CD2-CE2	5.21	1.47	1.39
1	B	87	ARG	CZ-NH1	-5.19	1.26	1.33
1	B	338	PHE	CE1-CZ	5.19	1.47	1.37
1	D	28	SER	CA-C	5.18	1.66	1.52
1	D	344	GLU	CD-OE2	5.18	1.31	1.25
1	A	41	GLU	CG-CD	5.16	1.59	1.51
1	D	428	PHE	CG-CD2	5.15	1.46	1.38
1	C	511	PHE	CE1-CZ	5.14	1.47	1.37
1	D	167	SER	CB-OG	5.13	1.49	1.42
1	D	265	SER	CA-CB	5.13	1.60	1.52
1	A	377	ARG	CZ-NH1	5.12	1.39	1.33

Continued on next page...

Continued from previous page...

Mol	Chain	Res	Type	Atoms	Z	Observed(Å)	Ideal(Å)
1	D	460	TYR	CD1-CE1	5.12	1.47	1.39
1	A	740	ARG	CZ-NH2	5.09	1.39	1.33
1	B	335	GLU	CB-CG	-5.08	1.42	1.52
1	B	317	PHE	CD1-CE1	5.07	1.49	1.39
1	B	689	TYR	CG-CD1	5.07	1.45	1.39
1	D	320	ARG	CZ-NH1	5.06	1.39	1.33
1	A	487	GLU	CD-OE1	-5.04	1.20	1.25
1	B	323	TRP	CE3-CZ3	5.04	1.47	1.38
1	C	141	TYR	CG-CD2	5.04	1.45	1.39
1	C	469	TRP	CE3-CZ3	5.04	1.47	1.38
1	A	731	GLU	CD-OE2	-5.03	1.20	1.25
1	D	87	ARG	CZ-NH1	-5.02	1.26	1.33
1	C	69	GLU	CB-CG	5.01	1.61	1.52
1	D	73	LYS	CD-CE	5.01	1.63	1.51
1	D	377	ARG	CZ-NH1	5.01	1.39	1.33

All (143) bond angle outliers are listed below:

Mol	Chain	Res	Type	Atoms	Z	Observed(°)	Ideal(°)
1	C	636	ARG	NE-CZ-NH1	15.89	128.25	120.30
1	C	37	ARG	NE-CZ-NH2	-15.18	112.71	120.30
1	C	636	ARG	NE-CZ-NH2	-14.19	113.21	120.30
1	B	521	ARG	NE-CZ-NH1	10.80	125.70	120.30
1	C	59	ASP	CB-CG-OD1	10.46	127.72	118.30
1	D	521	ARG	NE-CZ-NH2	-9.76	115.42	120.30
1	D	435	ARG	NE-CZ-NH2	-9.61	115.49	120.30
1	D	377	ARG	NE-CZ-NH2	-9.32	115.64	120.30
1	D	700	ASP	CB-CG-OD1	9.04	126.43	118.30
1	B	740	ARG	NE-CZ-NH2	-8.78	115.91	120.30
1	D	686	MET	CG-SD-CE	8.77	114.22	100.20
1	A	479	ARG	NE-CZ-NH1	8.75	124.68	120.30
1	A	471	ARG	NE-CZ-NH1	-8.69	115.95	120.30
1	A	130	ARG	NE-CZ-NH2	-8.63	115.99	120.30
1	B	495	ARG	NE-CZ-NH1	8.46	124.53	120.30
1	D	177	ASP	CB-CG-OD1	-8.04	111.06	118.30
1	B	313	ARG	NE-CZ-NH1	8.04	124.32	120.30
1	C	70	ASP	CB-CG-OD1	-7.86	111.22	118.30
1	A	663	ASP	CB-CG-OD2	-7.77	111.31	118.30
1	C	37	ARG	NE-CZ-NH1	7.75	124.17	120.30
1	C	377	ARG	NE-CZ-NH2	-7.74	116.43	120.30
1	B	96	ARG	NE-CZ-NH1	7.63	124.11	120.30
1	D	61	ARG	NE-CZ-NH1	-7.61	116.49	120.30

Continued on next page...

Continued from previous page...

Mol	Chain	Res	Type	Atoms	Z	Observed(°)	Ideal(°)
1	D	582	LEU	CB-CG-CD1	7.49	123.74	111.00
1	A	28	SER	C-N-CA	-7.34	103.34	121.70
1	D	313	ARG	NE-CZ-NH2	-7.34	116.63	120.30
1	D	612	ARG	NE-CZ-NH2	7.28	123.94	120.30
1	C	471	ARG	NE-CZ-NH2	-7.17	116.72	120.30
1	C	59	ASP	CB-CG-OD2	-7.16	111.86	118.30
1	D	72	ARG	NE-CZ-NH2	-7.15	116.73	120.30
1	A	118	ASP	CB-CG-OD1	-7.04	111.97	118.30
1	C	267	ARG	NE-CZ-NH1	-6.99	116.81	120.30
1	C	125	ARG	NE-CZ-NH2	-6.94	116.83	120.30
1	C	445	ARG	NE-CZ-NH1	6.91	123.75	120.30
1	B	70	ASP	CB-CG-OD1	6.88	124.49	118.30
1	A	165	ARG	NE-CZ-NH1	6.82	123.71	120.30
1	B	369	ARG	NE-CZ-NH1	-6.81	116.89	120.30
1	D	663	ASP	CB-CG-OD2	-6.80	112.18	118.30
1	D	185	PHE	CB-CG-CD2	-6.77	116.06	120.80
1	B	369	ARG	NE-CZ-NH2	6.71	123.66	120.30
1	D	278	ARG	NE-CZ-NH1	-6.69	116.95	120.30
1	D	648	LEU	CB-CG-CD2	6.63	122.28	111.00
1	C	612	ARG	NE-CZ-NH2	-6.59	117.00	120.30
1	C	319	ARG	NE-CZ-NH2	-6.59	117.01	120.30
1	A	130	ARG	NE-CZ-NH1	6.56	123.58	120.30
1	C	70	ASP	CB-CG-OD2	6.49	124.14	118.30
1	B	278	ARG	NE-CZ-NH2	-6.48	117.06	120.30
1	A	552	LEU	CB-CG-CD1	6.43	121.94	111.00
1	A	612	ARG	NE-CZ-NH2	6.43	123.52	120.30
1	D	411	ARG	NE-CZ-NH2	-6.39	117.11	120.30
1	B	158	LYS	CA-CB-CG	-6.38	99.37	113.40
1	A	177	ASP	CB-CG-OD1	-6.33	112.60	118.30
1	A	377	ARG	NE-CZ-NH2	-6.33	117.14	120.30
1	D	344	GLU	CA-CB-CG	6.20	127.03	113.40
1	B	686	MET	CG-SD-CE	-6.15	90.35	100.20
1	A	313	ARG	NE-CZ-NH1	-6.15	117.22	120.30
1	C	606	LEU	CB-CG-CD1	6.14	121.43	111.00
1	B	108	PHE	CB-CG-CD2	-6.12	116.52	120.80
1	D	180	ARG	NE-CZ-NH2	-6.07	117.26	120.30
1	D	497	ARG	NE-CZ-NH1	6.06	123.33	120.30
1	B	37	ARG	NE-CZ-NH1	-5.99	117.31	120.30
1	B	181	ASP	CB-CG-OD1	-5.98	112.92	118.30
1	A	552	LEU	CB-CG-CD2	5.97	121.15	111.00
1	A	377	ARG	CG-CD-NE	-5.95	99.31	111.80
1	C	259	ASP	CB-CG-OD1	-5.94	112.95	118.30

Continued on next page...

Continued from previous page...

Mol	Chain	Res	Type	Atoms	Z	Observed(°)	Ideal(°)
1	B	290	ARG	NE-CZ-NH1	-5.94	117.33	120.30
1	B	260	ARG	NE-CZ-NH1	-5.93	117.33	120.30
1	A	740	ARG	NE-CZ-NH1	5.93	123.27	120.30
1	B	525	ASP	CB-CG-OD2	-5.91	112.98	118.30
1	B	495	ARG	NE-CZ-NH2	-5.88	117.36	120.30
1	A	266	TYR	CB-CG-CD1	-5.86	117.48	121.00
1	A	338	PHE	CB-CG-CD1	-5.84	116.71	120.80
1	B	198	LEU	CB-CG-CD1	5.82	120.89	111.00
1	A	294	LYS	CD-CE-NZ	-5.80	98.37	111.70
1	B	370	VAL	CG1-CB-CG2	5.76	120.12	110.90
1	C	278	ARG	NE-CZ-NH1	-5.76	117.42	120.30
1	D	612	ARG	NE-CZ-NH1	-5.74	117.43	120.30
1	D	37	ARG	NE-CZ-NH2	-5.73	117.44	120.30
1	B	185	PHE	CB-CG-CD2	-5.71	116.80	120.80
1	C	733	LEU	CA-CB-CG	5.70	128.41	115.30
1	D	680	ASP	CB-CG-OD2	5.70	123.43	118.30
1	C	725	ASP	N-CA-C	5.69	126.37	111.00
1	B	446	ASP	CB-CG-OD1	5.67	123.41	118.30
1	C	278	ARG	NE-CZ-NH2	5.67	123.13	120.30
1	A	290	ARG	NE-CZ-NH1	-5.66	117.47	120.30
1	C	197	ASP	CB-CG-OD2	5.66	123.39	118.30
1	B	595	ASP	CB-CA-C	5.62	121.64	110.40
1	D	345	ASP	CB-CG-OD2	-5.61	113.25	118.30
1	D	495	ARG	NE-CZ-NH1	5.59	123.10	120.30
1	A	405	ASP	CB-CG-OD1	5.55	123.30	118.30
1	A	72	ARG	CG-CD-NE	-5.53	100.18	111.80
1	A	29	LEU	CB-CA-C	5.53	120.71	110.20
1	B	338	PHE	CB-CG-CD1	-5.52	116.94	120.80
1	B	377	ARG	NE-CZ-NH1	-5.51	117.54	120.30
1	B	571	LEU	CB-CG-CD1	5.51	120.36	111.00
1	C	61	ARG	NE-CZ-NH1	-5.47	117.57	120.30
1	D	377	ARG	NH1-CZ-NH2	5.45	125.40	119.40
1	B	445	ARG	NE-CZ-NH1	5.45	123.03	120.30
1	A	259	ASP	CB-CG-OD2	5.42	123.18	118.30
1	B	344	GLU	CA-CB-CG	5.42	125.32	113.40
1	B	137	TYR	CZ-CE2-CD2	-5.41	114.93	119.80
1	B	259	ASP	CB-CG-OD1	-5.41	113.43	118.30
1	B	601	ARG	NE-CZ-NH1	5.41	123.00	120.30
1	C	552	LEU	CB-CG-CD1	5.40	120.17	111.00
1	A	185	PHE	CB-CG-CD2	-5.39	117.02	120.80
1	A	206	PHE	CB-CG-CD2	-5.39	117.02	120.80
1	A	446	ASP	CB-CG-OD1	5.39	123.15	118.30

Continued on next page...

Continued from previous page...

Mol	Chain	Res	Type	Atoms	Z	Observed(°)	Ideal(°)
1	B	37	ARG	NE-CZ-NH2	5.39	122.99	120.30
1	D	446	ASP	CB-CG-OD1	5.37	123.13	118.30
1	B	96	ARG	NE-CZ-NH2	-5.37	117.62	120.30
1	B	428	PHE	CB-CG-CD2	-5.37	117.04	120.80
1	A	615	ASP	CB-CG-OD2	5.36	123.13	118.30
1	D	96	ARG	NE-CZ-NH1	5.35	122.98	120.30
1	B	299	LYS	CD-CE-NZ	-5.34	99.42	111.70
1	C	633	LEU	CB-CG-CD1	5.33	120.06	111.00
1	B	313	ARG	NE-CZ-NH2	-5.32	117.64	120.30
1	C	445	ARG	NE-CZ-NH2	-5.32	117.64	120.30
1	C	72	ARG	NE-CZ-NH2	-5.30	117.65	120.30
1	B	562	LEU	CB-CG-CD1	5.28	119.98	111.00
1	C	551	ASP	CB-CG-OD2	-5.28	113.55	118.30
1	A	100	ARG	NE-CZ-NH1	5.25	122.93	120.30
1	A	612	ARG	NE-CZ-NH1	-5.23	117.68	120.30
1	B	267	ARG	NE-CZ-NH2	-5.23	117.68	120.30
1	D	497	ARG	NE-CZ-NH2	-5.22	117.69	120.30
1	D	377	ARG	CG-CD-NE	-5.20	100.89	111.80
1	C	377	ARG	NH1-CZ-NH2	5.20	125.11	119.40
1	D	118	ASP	CB-CG-OD1	-5.18	113.64	118.30
1	C	137	TYR	CZ-CE2-CD2	-5.17	115.14	119.80
1	D	490	GLU	OE1-CD-OE2	5.15	129.49	123.30
1	D	435	ARG	NE-CZ-NH1	5.15	122.88	120.30
1	A	479	ARG	NE-CZ-NH2	-5.14	117.73	120.30
1	D	165	ARG	NE-CZ-NH1	5.13	122.86	120.30
1	B	309	LYS	CD-CE-NZ	-5.11	99.94	111.70
1	A	686	MET	CG-SD-CE	5.11	108.37	100.20
1	B	267	ARG	NE-CZ-NH1	5.10	122.85	120.30
1	C	401	ASP	CB-CG-OD1	-5.09	113.72	118.30
1	A	591	TYR	CZ-CE2-CD2	-5.08	115.23	119.80
1	B	422	ARG	NE-CZ-NH1	5.05	122.83	120.30
1	C	37	ARG	CB-CG-CD	-5.05	98.47	111.60
1	A	152	PHE	CB-CG-CD1	-5.03	117.28	120.80
1	B	350	ASP	CB-CG-OD1	-5.03	113.78	118.30
1	C	29	LEU	CB-CG-CD1	-5.02	102.47	111.00
1	B	137	TYR	CG-CD1-CE1	-5.01	117.29	121.30

All (1) chirality outliers are listed below:

Mol	Chain	Res	Type	Atom
1	C	159	ILE	CB

All (5) planarity outliers are listed below:

Mol	Chain	Res	Type	Group
1	A	121	ARG	Sidechain
1	B	121	ARG	Sidechain
1	C	121	ARG	Sidechain
1	C	724	ALA	Peptide
1	C	725	ASP	Peptide

5.2 Too-close contacts [i](#)

In the following table, the Non-H and H(model) columns list the number of non-hydrogen atoms and hydrogen atoms in the chain respectively. The H(added) column lists the number of hydrogen atoms added and optimized by MolProbity. The Clashes column lists the number of clashes within the asymmetric unit, whereas Symm-Clashes lists symmetry-related clashes.

Mol	Chain	Non-H	H(model)	H(added)	Clashes	Symm-Clashes
1	A	5755	0	5582	61	0
1	B	5757	0	5587	63	0
1	C	5760	0	5591	59	0
1	D	5769	0	5597	53	0
2	A	44	0	31	12	0
2	B	44	0	31	19	0
2	C	44	0	31	19	0
2	D	44	0	31	11	0
3	A	44	0	36	10	0
3	B	44	0	36	10	0
3	C	44	0	36	8	0
3	D	44	0	36	9	0
4	A	1	0	0	5	0
4	B	1	0	0	4	0
4	C	1	0	0	5	0
4	D	1	0	0	4	0
5	A	895	0	0	9	1
5	B	803	0	0	19	0
5	C	865	0	0	20	0
5	D	933	0	0	25	1
All	All	26893	0	22625	282	1

The all-atom clashscore is defined as the number of clashes found per 1000 atoms (including hydrogen atoms). The all-atom clashscore for this structure is 6.

All (282) close contacts within the same asymmetric unit are listed below, sorted by their clash magnitude.

Atom-1	Atom-2	Interatomic distance (Å)	Clash overlap (Å)
2:C:760[A]:HDD:HBB2	4:C:754[A]:H2S:S	1.30	1.70
2:B:760[A]:HDD:HBB2	4:B:754[A]:H2S:S	1.22	1.68
1:A:274:CYS:HB3	4:A:754[A]:H2S:S	1.34	1.63
1:B:274:CYS:HB3	4:B:754[A]:H2S:S	1.35	1.63
1:C:274:CYS:HB3	4:C:754[A]:H2S:S	1.32	1.62
1:D:274:CYS:HB3	4:D:754[A]:H2S:S	1.36	1.60
2:B:760[A]:HDD:CBB	4:B:754[A]:H2S:S	2.08	1.38
2:C:760[A]:HDD:CBB	4:C:754[A]:H2S:S	2.17	1.33
5:B:2705:HOH:O	1:D:73:LYS:HD3	1.26	1.30
3:B:761[B]:HDE:HMC	3:B:761[B]:HDE:CBC	1.59	1.29
1:C:578:ASP:HB3	5:C:2919:HOH:O	1.12	1.27
1:C:274:CYS:CB	4:C:754[A]:H2S:S	2.26	1.24
1:A:201:ASN:CG	2:A:760[A]:HDD:HMB2	1.58	1.23
1:B:274:CYS:CB	4:B:754[A]:H2S:S	2.27	1.21
1:A:274:CYS:CB	4:A:754[A]:H2S:S	2.28	1.20
1:D:274:CYS:CB	4:D:754[A]:H2S:S	2.31	1.18
1:A:29:LEU:HD22	5:C:2405:HOH:O	1.43	1.17
1:B:201:ASN:CG	2:B:760[A]:HDD:HMB2	1.63	1.16
1:B:451:MET:SD	5:B:3614:HOH:O	2.05	1.13
3:C:761[B]:HDE:HMC	3:C:761[B]:HDE:HBCB	1.28	1.13
1:A:73:LYS:CD	5:C:3442:HOH:O	1.94	1.13
1:C:451:MET:SD	5:C:3612:HOH:O	2.10	1.09
3:A:761[B]:HDE:HBCB	3:A:761[B]:HDE:HMC	1.26	1.08
1:C:267:ARG:HG3	5:C:2916:HOH:O	1.51	1.08
2:A:760[A]:HDD:HBB2	4:A:754[A]:H2S:S	1.94	1.08
3:B:761[B]:HDE:HMC	3:B:761[B]:HDE:HBCB	1.16	1.07
1:A:201:ASN:ND2	2:A:760[A]:HDD:HMB2	1.68	1.06
1:D:201:ASN:CG	2:D:760[A]:HDD:HMB2	1.75	1.06
1:D:416[A]:THR:CG2	5:D:3576:HOH:O	2.03	1.05
1:B:416:THR:HG21	5:D:2464:HOH:O	1.55	1.04
1:B:521:ARG:HH21	1:B:745:ILE:HG21	1.20	1.03
3:D:761[B]:HDE:HBCB	3:D:761[B]:HDE:HMC	1.07	1.02
1:C:201:ASN:CG	2:C:760[A]:HDD:HMB2	1.80	1.02
1:D:416[A]:THR:HG23	5:D:3576:HOH:O	1.59	1.02
3:B:761[B]:HDE:HBCB	3:B:761[B]:HDE:CMC	1.85	1.00
3:B:761[B]:HDE:HMC	3:B:761[B]:HDE:HBCA	1.45	0.98
1:A:451:MET:SD	5:A:3609:HOH:O	2.20	0.96
1:A:416[A]:THR:HG21	5:A:3313:HOH:O	1.65	0.96
3:D:761[B]:HDE:HMC	3:D:761[B]:HDE:CBC	1.96	0.96
2:A:760[A]:HDD:CBB	4:A:754[A]:H2S:S	2.54	0.95
3:D:761[B]:HDE:HBCB	3:D:761[B]:HDE:CMC	1.89	0.92
1:B:73:LYS:HE3	5:D:3517:HOH:O	1.71	0.91

Continued on next page...

Continued from previous page...

Atom-1	Atom-2	Interatomic distance (Å)	Clash overlap (Å)
1:B:521:ARG:NH2	1:B:745:ILE:HG21	1.85	0.90
1:A:73:LYS:HD3	5:C:3442:HOH:O	1.64	0.89
3:D:761[B]:HDE:HMB	3:D:761[B]:HDE:HBBB	1.55	0.89
1:C:440[B]:TYR:CZ	5:C:1792:HOH:O	2.24	0.88
1:A:716:GLU:HG2	5:A:3090:HOH:O	1.73	0.88
1:A:28:SER:O	1:A:28:SER:OG	1.86	0.87
1:A:639:GLU:HG3	5:A:2414:HOH:O	1.74	0.87
3:B:761[B]:HDE:CMC	3:B:761[B]:HDE:HBCA	2.02	0.87
1:C:137:TYR:HB2	1:C:159:ILE:HD11	1.59	0.84
1:C:713:GLN:HB3	5:C:3004:HOH:O	1.78	0.84
3:C:761[B]:HDE:HMB	3:C:761[B]:HDE:HBBB	1.60	0.82
2:B:760[A]:HDD:HBB1	2:B:760[A]:HDD:HMB1	1.61	0.81
3:A:761[B]:HDE:HMC	3:A:761[B]:HDE:CBC	2.10	0.80
1:B:748:ILE:O	1:B:751:ILE:HG22	1.78	0.80
1:A:274:CYS:SG	2:A:760[A]:HDD:HMB3	2.21	0.80
1:D:28:SER:HA	5:D:2467:HOH:O	1.81	0.79
1:D:274:CYS:SG	2:D:760[A]:HDD:CMB	2.71	0.79
3:B:761[B]:HDE:CBC	3:B:761[B]:HDE:CMC	2.31	0.78
3:B:761[B]:HDE:HMB	3:B:761[B]:HDE:HBBB	1.65	0.78
1:C:201:ASN:ND2	2:C:760[A]:HDD:HMB2	1.99	0.77
1:B:201:ASN:ND2	2:B:760[A]:HDD:HMB2	1.99	0.77
1:D:416[A]:THR:HG21	5:D:3334:HOH:O	1.84	0.77
1:A:751:ILE:HD12	1:A:751:ILE:O	1.83	0.77
2:C:760[A]:HDD:HMB1	2:C:760[A]:HDD:HBB1	1.66	0.75
1:C:685:LEU:N	1:C:685:LEU:HD22	2.02	0.73
1:D:700:ASP:OD1	5:D:3236:HOH:O	2.07	0.73
1:D:274:CYS:SG	2:D:760[A]:HDD:HMB3	2.29	0.72
1:D:731:GLU:OE2	5:D:3028:HOH:O	2.07	0.72
2:C:760[A]:HDD:CBB	2:C:760[A]:HDD:HMB1	2.20	0.71
1:D:274:CYS:SG	2:D:760[A]:HDD:HMB1	2.29	0.71
1:B:274:CYS:SG	2:B:760[A]:HDD:HMB3	2.30	0.71
1:D:416[B]:THR:HG22	5:D:1415:HOH:O	1.91	0.71
1:D:440:TYR:CZ	5:D:3517:HOH:O	2.42	0.71
1:C:274:CYS:SG	2:C:760[A]:HDD:HMB3	2.31	0.71
2:C:760[A]:HDD:HMC1	2:C:760[A]:HDD:CBC	2.21	0.70
1:A:274:CYS:SG	2:A:760[A]:HDD:CMB	2.79	0.70
2:B:760[A]:HDD:CBB	2:B:760[A]:HDD:HMB1	2.22	0.70
3:B:761[B]:HDE:HMB	3:B:761[B]:HDE:CBB	2.21	0.70
1:D:416[A]:THR:HG21	5:D:3576:HOH:O	1.76	0.69
3:D:761[B]:HDE:CBC	3:D:761[B]:HDE:CMC	2.62	0.69
1:C:578:ASP:OD1	5:C:3157:HOH:O	2.08	0.69

Continued on next page...

Continued from previous page...

Atom-1	Atom-2	Interatomic distance (Å)	Clash overlap (Å)
2:B:760[A]:HDD:HBB1	2:B:760[A]:HDD:CMB	2.23	0.69
2:C:760[A]:HDD:HBB1	2:C:760[A]:HDD:CMB	2.21	0.68
1:C:274:CYS:SG	2:C:760[A]:HDD:CMB	2.83	0.67
1:B:330:ASP:OD1	1:B:629:HIS:HE1	1.78	0.67
2:C:760[A]:HDD:HMC1	2:C:760[A]:HDD:HBC1	1.77	0.67
1:D:703:LYS:NZ	5:D:2744:HOH:O	2.26	0.67
1:D:201:ASN:ND2	2:D:760[A]:HDD:HMB2	2.10	0.66
1:B:274:CYS:SG	2:B:760[A]:HDD:CMB	2.83	0.65
1:C:274:CYS:HB3	2:C:760[A]:HDD:CBB	2.26	0.65
3:D:761[B]:HDE:HMB	3:D:761[B]:HDE:CBB	2.26	0.65
2:C:760[A]:HDD:HBC1	2:C:760[A]:HDD:CMC	2.27	0.64
1:C:725:ASP:O	5:C:2403:HOH:O	2.14	0.64
1:D:629:HIS:HD2	5:D:1554:HOH:O	1.80	0.64
1:C:137:TYR:HB2	1:C:159:ILE:CD1	2.27	0.64
3:C:761[B]:HDE:HBCB	3:C:761[B]:HDE:CMC	2.06	0.64
1:B:700:ASP:HB2	5:B:3595:HOH:O	1.97	0.63
1:D:449[A]:HIS:HD2	5:D:3615:HOH:O	1.80	0.63
1:B:533[A]:LYS:HE2	5:B:3100:HOH:O	1.98	0.63
1:B:70:ASP:OD1	5:B:2761:HOH:O	2.15	0.63
1:C:578:ASP:HB2	1:C:582:LEU:O	1.98	0.63
1:A:201:ASN:ND2	2:A:760[A]:HDD:CMB	2.53	0.62
1:C:330:ASP:OD1	1:C:629:HIS:HE1	1.83	0.62
1:C:583:LYS:O	1:C:584:LYS:HB3	2.00	0.61
1:A:532:SER:OG	5:A:2410:HOH:O	2.15	0.61
1:C:449[A]:HIS:HD2	5:C:3611:HOH:O	1.84	0.60
1:B:449[B]:HIS:HE1	5:D:1789:HOH:O	1.84	0.60
1:D:267:ARG:HG3	5:D:1920:HOH:O	2.01	0.60
1:D:341:ILE:HD12	5:D:3022:HOH:O	2.02	0.59
1:B:274:CYS:HB3	2:B:760[A]:HDD:CBB	2.33	0.59
1:D:440:TYR:CE2	5:D:3517:HOH:O	2.55	0.59
1:B:449[B]:HIS:HD2	5:B:3613:HOH:O	1.84	0.58
3:A:761[B]:HDE:HBCB	3:A:761[B]:HDE:CMC	2.12	0.58
1:D:330:ASP:OD1	1:D:629:HIS:HE1	1.86	0.58
1:C:629:HIS:HD2	5:C:1129:HOH:O	1.86	0.58
1:A:416[B]:THR:HG22	5:A:901:HOH:O	2.03	0.58
1:C:274:CYS:SG	2:C:760[A]:HDD:HBB1	2.45	0.57
1:B:521:ARG:NH2	1:B:745:ILE:CG2	2.64	0.57
1:A:36:HIS:CD2	1:A:36:HIS:H	2.23	0.57
3:C:761[B]:HDE:HMB	3:C:761[B]:HDE:CBB	2.32	0.57
1:B:115:THR:CG2	5:B:3420:HOH:O	2.54	0.56
1:B:726:GLY:HA2	5:B:3590:HOH:O	2.06	0.56

Continued on next page...

Continued from previous page...

Atom-1	Atom-2	Interatomic distance (Å)	Clash overlap (Å)
3:C:761[B]:HDE:CMC	3:C:761[B]:HDE:CBC	2.82	0.56
2:B:760[A]:HDD:CBC	2:B:760[A]:HDD:HMC1	2.35	0.56
1:B:359:LEU:H	1:B:507:HIS:HD2	1.54	0.56
1:C:59:ASP:OD2	5:C:2529:HOH:O	2.17	0.56
1:B:274:CYS:SG	2:B:760[A]:HDD:HBB1	2.47	0.55
2:B:760[A]:HDD:HMC1	2:B:760[A]:HDD:HBC1	1.89	0.55
1:C:681:ALA:O	1:C:685:LEU:HD23	2.05	0.55
1:D:672:ILE:HG12	1:D:700:ASP:OD2	2.06	0.55
1:D:449[A]:HIS:HE1	5:D:1789:HOH:O	1.90	0.55
1:B:629:HIS:HD2	5:B:1054:HOH:O	1.89	0.55
1:D:127:VAL:HG22	3:D:761[B]:HDE:HMAB	1.88	0.54
1:A:73:LYS:HD2	5:C:3442:HOH:O	1.79	0.54
5:A:1788:HOH:O	1:C:449[A]:HIS:HE1	1.89	0.54
1:C:273:GLY:C	1:C:274:CYS:SG	2.86	0.54
1:A:273:GLY:C	1:A:274:CYS:SG	2.85	0.54
1:B:583:LYS:NZ	1:B:583:LYS:H	2.05	0.54
1:A:201:ASN:CG	2:A:760[A]:HDD:CMB	2.53	0.54
1:D:37:ARG:HD2	5:D:2157:HOH:O	2.08	0.54
2:D:760[A]:HDD:CBB	4:D:754[A]:H2S:S	2.96	0.53
1:A:725:ASP:H	1:A:728:PHE:HB3	1.72	0.53
1:D:748:ILE:O	1:D:751:ILE:HG22	2.08	0.53
1:D:211:ALA:CB	1:D:410:GLY:HA3	2.39	0.53
1:A:29:LEU:HD23	5:C:3144:HOH:O	2.08	0.53
1:D:275:HIS:CE1	2:D:760[A]:HDD:HBB2	2.44	0.53
1:C:708:ILE:HG13	1:C:710:ILE:HG12	1.90	0.53
1:A:459:ASN:ND2	1:B:219:HIS:HB3	2.24	0.53
1:B:211:ALA:CB	1:B:410:GLY:HA3	2.38	0.53
1:A:214:PHE:CD2	3:A:761[B]:HDE:HAB	2.45	0.52
1:C:359:LEU:H	1:C:507:HIS:HD2	1.57	0.52
1:A:184:GLY:HA3	2:A:760[A]:HDD:HMA2	1.90	0.52
1:B:201:ASN:ND2	2:B:760[A]:HDD:CMB	2.72	0.52
1:C:700:ASP:HB2	5:C:3596:HOH:O	2.08	0.52
2:C:760[A]:HDD:CBB	2:C:760[A]:HDD:CMB	2.85	0.52
2:D:760[A]:HDD:HBB2	4:D:754[A]:H2S:S	2.49	0.52
2:D:760[A]:HDD:HMC1	2:D:760[A]:HDD:CBC	2.40	0.52
1:A:274:CYS:CA	4:A:754[A]:H2S:S	2.99	0.51
1:C:634:TYR:O	1:C:653:THR:HA	2.10	0.51
2:B:760[A]:HDD:HBC1	2:B:760[A]:HDD:CMC	2.41	0.51
1:D:393:PRO:HD2	1:D:415:TYR:CG	2.45	0.51
3:A:761[B]:HDE:CBC	3:A:761[B]:HDE:CMC	2.81	0.50
2:C:760[A]:HDD:CBC	2:C:760[A]:HDD:CMC	2.86	0.50

Continued on next page...

Continued from previous page...

Atom-1	Atom-2	Interatomic distance (Å)	Clash overlap (Å)
1:C:199:VAL:HG12	3:C:761[B]:HDE:HHDA	1.93	0.50
1:B:274:CYS:SG	2:B:760[A]:HDD:HMB1	2.52	0.49
1:C:274:CYS:CB	2:C:760[A]:HDD:CBB	2.90	0.49
1:A:278:ARG:HH12	1:A:487:GLU:CD	2.16	0.49
1:A:748:ILE:O	1:A:751:ILE:HG13	2.13	0.49
1:A:73:LYS:CE	5:C:3442:HOH:O	2.40	0.49
1:B:201:ASN:OD1	2:B:760[A]:HDD:HMB2	2.08	0.49
1:B:115:THR:HG21	5:B:3420:HOH:O	2.11	0.48
1:B:521:ARG:NH2	1:B:745:ILE:HD13	2.29	0.48
1:B:578:ASP:HB2	5:B:2590:HOH:O	2.12	0.48
1:A:211:ALA:CB	1:A:410:GLY:HA3	2.44	0.48
1:D:359:LEU:H	1:D:507:HIS:HD2	1.61	0.48
1:A:393:PRO:HD2	1:A:415:TYR:CG	2.48	0.48
3:D:761[B]:HDE:HMAA	3:D:761[B]:HDE:HAAA	1.67	0.48
1:A:128:HIS:HA	1:A:168:THR:O	2.14	0.48
1:C:727:SER:O	1:C:731:GLU:HG3	2.13	0.47
1:C:274:CYS:SG	2:C:760[A]:HDD:HMB1	2.50	0.47
1:D:341:ILE:CG1	5:D:3022:HOH:O	2.63	0.47
1:B:556:GLN:HG2	1:B:566:LEU:HD22	1.96	0.47
1:B:634:TYR:O	1:B:653:THR:HA	2.14	0.47
1:C:459:ASN:ND2	1:D:219:HIS:HB3	2.30	0.47
1:C:681:ALA:O	1:C:685:LEU:CD2	2.63	0.47
1:C:685:LEU:HD22	1:C:685:LEU:H	1.76	0.47
3:D:761[B]:HDE:CBB	3:D:761[B]:HDE:CMB	2.91	0.47
1:C:393:PRO:HD2	1:C:415:TYR:CG	2.50	0.47
1:C:685:LEU:N	1:C:685:LEU:CD2	2.73	0.47
1:A:201:ASN:CB	2:A:760[A]:HDD:HMB2	2.44	0.46
1:B:393:PRO:HD2	1:B:415:TYR:CG	2.50	0.46
1:D:341:ILE:HG13	5:D:3022:HOH:O	2.15	0.46
3:C:761[B]:HDE:HMC	3:C:761[B]:HDE:CBC	2.19	0.46
1:D:128:HIS:HA	1:D:168:THR:O	2.15	0.46
1:B:708:ILE:HG13	1:B:710:ILE:HG12	1.97	0.46
1:C:274:CYS:CA	4:C:754[A]:H2S:S	3.02	0.46
1:B:158:LYS:HG2	5:B:975:HOH:O	2.15	0.46
1:B:604:ALA:HB1	1:B:633:LEU:HD22	1.97	0.46
1:C:631:LYS:HG3	1:C:633:LEU:HD13	1.98	0.46
1:B:552:LEU:O	1:B:552:LEU:HD22	2.16	0.45
1:C:584:LYS:HB2	1:C:584:LYS:HE3	1.78	0.45
1:A:533:LYS:HE3	5:A:2410:HOH:O	2.17	0.45
1:A:219:HIS:HB3	1:B:459:ASN:ND2	2.32	0.45
3:A:761[B]:HDE:HMB	3:A:761[B]:HDE:HBBB	1.98	0.45

Continued on next page...

Continued from previous page...

Atom-1	Atom-2	Interatomic distance (Å)	Clash overlap (Å)
1:B:73:LYS:HD3	1:D:441:HIS:CD2	2.52	0.45
1:B:552:LEU:HD21	1:B:571:LEU:HD12	1.99	0.45
1:B:596:GLY:HA3	1:B:737:ALA:O	2.17	0.45
1:B:459:ASN:HD22	1:B:459:ASN:H	1.64	0.45
5:B:983:HOH:O	1:D:52:PRO:HG3	2.17	0.45
1:D:672:ILE:CG1	1:D:700:ASP:OD2	2.65	0.45
1:A:38:PRO:HG2	1:A:51:ALA:HB2	1.99	0.44
1:A:414:SER:OG	3:A:761[B]:HDE:HBB	2.18	0.44
1:C:128:HIS:CE1	1:C:169:VAL:HG22	2.52	0.44
1:D:341:ILE:CD1	5:D:3022:HOH:O	2.62	0.44
1:A:690:LYS:HG3	1:A:751:ILE:HD11	1.99	0.44
1:B:411:ARG:HG2	3:B:761[B]:HDE:C3B	2.47	0.44
1:C:137:TYR:CB	1:C:159:ILE:HD11	2.41	0.44
1:B:207:PHE:O	1:B:249:THR:HA	2.17	0.44
1:A:274:CYS:SG	2:A:760[A]:HDD:HMB1	2.54	0.44
1:B:407:LEU:HG	3:B:761[B]:HDE:HABA	1.99	0.44
1:A:29:LEU:N	1:A:29:LEU:HD12	2.33	0.43
1:B:583:LYS:O	1:B:584:LYS:HB3	2.18	0.43
1:A:155:ASP:CG	5:A:3378:HOH:O	2.56	0.43
1:A:29:LEU:HB2	5:C:2405:HOH:O	2.19	0.43
1:B:273:GLY:C	1:B:274:CYS:SG	2.96	0.43
1:C:535:VAL:O	1:C:537:PRO:HD3	2.18	0.43
1:B:28:SER:HA	5:B:2571:HOH:O	2.18	0.43
1:C:219:HIS:HB3	1:D:459:ASN:ND2	2.34	0.43
1:C:583:LYS:O	1:C:584:LYS:CB	2.67	0.43
1:A:29:LEU:HD12	1:A:29:LEU:H	1.83	0.43
1:C:128:HIS:HA	1:C:168:THR:O	2.18	0.43
1:C:224:GLU:HB3	5:C:3120:HOH:O	2.19	0.43
5:B:3557:HOH:O	1:C:686:MET:HE1	2.18	0.43
5:B:3376:HOH:O	1:D:28:SER:HB3	2.19	0.43
2:A:760[A]:HDD:HMC1	2:A:760[A]:HDD:CBC	2.49	0.43
1:D:556:GLN:NE2	5:D:2773:HOH:O	2.52	0.43
1:B:115:THR:HG23	5:B:3420:HOH:O	2.17	0.42
1:B:682:ASN:HB3	1:B:707:THR:HG21	2.01	0.42
1:B:128:HIS:CE1	1:B:169:VAL:HG22	2.54	0.42
1:D:393:PRO:HD2	1:D:415:TYR:CD2	2.54	0.42
1:C:490:GLU:OE1	1:D:488[B]:ARG:NH2	2.28	0.42
1:D:552:LEU:HD22	1:D:552:LEU:HA	1.88	0.42
1:C:267:ARG:HH11	1:C:267:ARG:HD2	1.63	0.42
1:A:125:ARG:HG2	3:A:761[B]:HDE:HBA	2.02	0.42
1:C:201:ASN:ND2	2:C:760[A]:HDD:CMB	2.77	0.42

Continued on next page...

Continued from previous page...

Atom-1	Atom-2	Interatomic distance (Å)	Clash overlap (Å)
1:D:278:ARG:HH12	1:D:487:GLU:CD	2.23	0.42
1:D:273:GLY:C	1:D:274:CYS:SG	2.98	0.42
1:A:535:VAL:O	1:A:537:PRO:HD3	2.20	0.42
1:D:184:GLY:HA3	2:D:760[A]:HDD:HMA2	2.01	0.42
3:A:761[B]:HDE:HABA	3:A:761[B]:HDE:HHCA	1.85	0.41
1:B:359:LEU:H	1:B:507:HIS:CD2	2.37	0.41
1:B:724:ALA:O	1:B:725:ASP:O	2.38	0.41
1:C:685:LEU:CD2	1:C:685:LEU:H	2.33	0.41
1:D:275:HIS:NE2	2:D:760[A]:HDD:CBB	2.83	0.41
1:A:83:ASN:HB3	1:C:429:HIS:CG	2.55	0.41
3:C:761[B]:HDE:HMAA	3:C:761[B]:HDE:HAAA	1.60	0.41
1:A:128:HIS:CE1	1:A:169:VAL:HG22	2.56	0.41
1:A:207:PHE:O	1:A:249:THR:HA	2.20	0.41
1:B:97:ALA:O	1:B:101:GLY:HA3	2.21	0.41
1:B:751:ILE:O	1:B:751:ILE:HG23	2.21	0.41
1:A:244:SER:HA	1:A:546[B]:GLN:NE2	2.36	0.41
1:B:521:ARG:HG3	5:B:3553:HOH:O	2.21	0.41
1:A:36:HIS:H	1:A:36:HIS:HD2	1.66	0.40
1:B:294:LYS:NZ	5:B:2778:HOH:O	2.53	0.40
1:C:507:HIS:HE1	5:C:926:HOH:O	2.04	0.40
1:D:369:ARG:CG	5:D:3574:HOH:O	2.68	0.40
1:A:83:ASN:HB3	1:C:429:HIS:CD2	2.56	0.40
1:B:184:GLY:HA3	2:B:760[A]:HDD:HMA2	2.02	0.40
1:B:364:LEU:HG	1:B:582:LEU:HD11	2.04	0.40
1:A:199:VAL:HG12	3:A:761[B]:HDE:HHDA	2.02	0.40
1:A:751:ILE:O	1:A:751:ILE:CD1	2.64	0.40
1:C:631:LYS:HG3	1:C:633:LEU:CD1	2.51	0.40
1:D:207:PHE:O	1:D:249:THR:HA	2.21	0.40
1:A:162:VAL:HA	1:A:188:LYS:O	2.21	0.40
2:B:760[A]:HDD:CBC	2:B:760[A]:HDD:CMC	2.99	0.40

All (1) symmetry-related close contacts are listed below. The label for Atom-2 includes the symmetry operator and encoded unit-cell translations to be applied.

Atom-1	Atom-2	Interatomic distance (Å)	Clash overlap (Å)
5:A:3241:HOH:O	5:D:2457:HOH:O[2_646]	1.92	0.28

5.3 Torsion angles [i](#)

5.3.1 Protein backbone [i](#)

In the following table, the Percentiles column shows the percent Ramachandran outliers of the chain as a percentile score with respect to all X-ray entries followed by that with respect to entries of similar resolution.

The Analysed column shows the number of residues for which the backbone conformation was analysed, and the total number of residues.

Mol	Chain	Analysed	Favoured	Allowed	Outliers	Percentiles	
1	A	729/753 (97%)	711 (98%)	17 (2%)	1 (0%)	48	24
1	B	729/753 (97%)	713 (98%)	14 (2%)	2 (0%)	37	17
1	C	728/753 (97%)	707 (97%)	20 (3%)	1 (0%)	48	24
1	D	732/753 (97%)	714 (98%)	17 (2%)	1 (0%)	48	24
All	All	2918/3012 (97%)	2845 (98%)	68 (2%)	5 (0%)	44	22

All (5) Ramachandran outliers are listed below:

Mol	Chain	Res	Type
1	B	725	ASP
1	C	75	SER
1	A	75	SER
1	D	75	SER
1	B	75	SER

5.3.2 Protein sidechains [i](#)

In the following table, the Percentiles column shows the percent sidechain outliers of the chain as a percentile score with respect to all X-ray entries followed by that with respect to entries of similar resolution.

The Analysed column shows the number of residues for which the sidechain conformation was analysed, and the total number of residues.

Mol	Chain	Analysed	Rotameric	Outliers	Percentiles	
1	A	614/634 (97%)	599 (98%)	15 (2%)	44	15
1	B	614/634 (97%)	589 (96%)	25 (4%)	26	4
1	C	613/634 (97%)	583 (95%)	30 (5%)	21	2
1	D	617/634 (97%)	596 (97%)	21 (3%)	32	7
All	All	2458/2536 (97%)	2367 (96%)	91 (4%)	29	6

All (91) residues with a non-rotameric sidechain are listed below:

Mol	Chain	Res	Type
1	A	28	SER
1	A	29	LEU
1	A	32	GLU
1	A	185	PHE
1	A	205	ILE
1	A	227	TRP
1	A	252	ASN
1	A	369	ARG
1	A	440	TYR
1	A	459	ASN
1	A	552	LEU
1	A	584	LYS
1	A	707	THR
1	A	713	GLN
1	A	732	LEU
1	B	157	ASN
1	B	185	PHE
1	B	191	THR
1	B	205	ILE
1	B	227	TRP
1	B	237	ASP
1	B	252	ASN
1	B	274	CYS
1	B	344	GLU
1	B	370	VAL
1	B	440	TYR
1	B	459	ASN
1	B	521	ARG
1	B	552	LEU
1	B	562	LEU
1	B	566	LEU
1	B	568	ASP
1	B	571	LEU
1	B	583	LYS
1	B	594	PRO
1	B	616	LEU
1	B	633	LEU
1	B	703	LYS
1	B	713	GLN
1	B	750	LYS
1	C	28	SER
1	C	61	ARG

Continued on next page...

Continued from previous page...

Mol	Chain	Res	Type
1	C	159	ILE
1	C	185	PHE
1	C	191	THR
1	C	205	ILE
1	C	227	TRP
1	C	237	ASP
1	C	252	ASN
1	C	283	GLU
1	C	285	LYS
1	C	377	ARG
1	C	440[A]	TYR
1	C	440[B]	TYR
1	C	459	ASN
1	C	488[A]	ARG
1	C	488[B]	ARG
1	C	521	ARG
1	C	552	LEU
1	C	571	LEU
1	C	584	LYS
1	C	606	LEU
1	C	616	LEU
1	C	633	LEU
1	C	636	ARG
1	C	648	LEU
1	C	725	ASP
1	C	733	LEU
1	C	750	LYS
1	C	751	ILE
1	D	32	GLU
1	D	48	GLN
1	D	73	LYS
1	D	185	PHE
1	D	191	THR
1	D	205	ILE
1	D	227	TRP
1	D	237	ASP
1	D	252	ASN
1	D	344	GLU
1	D	440	TYR
1	D	459	ASN
1	D	552	LEU
1	D	574	THR

Continued on next page...

Continued from previous page...

Mol	Chain	Res	Type
1	D	582	LEU
1	D	616	LEU
1	D	648	LEU
1	D	700	ASP
1	D	713	GLN
1	D	747	LYS
1	D	750	LYS

Sometimes sidechains can be flipped to improve hydrogen bonding and reduce clashes. All (24) such sidechains are listed below:

Mol	Chain	Res	Type
1	A	36	HIS
1	A	252	ASN
1	A	459	ASN
1	A	515	GLN
1	B	157	ASN
1	B	252	ASN
1	B	368	GLN
1	B	459	ASN
1	B	507	HIS
1	B	629	HIS
1	C	252	ASN
1	C	459	ASN
1	C	507	HIS
1	C	556	GLN
1	C	572	ASN
1	C	629	HIS
1	C	671	ASN
1	D	48	GLN
1	D	252	ASN
1	D	459	ASN
1	D	507	HIS
1	D	556	GLN
1	D	629	HIS
1	D	671	ASN

5.3.3 RNA

There are no RNA molecules in this entry.

5.4 Non-standard residues in protein, DNA, RNA chains [i](#)

There are no non-standard protein/DNA/RNA residues in this entry.

5.5 Carbohydrates [i](#)

There are no oligosaccharides in this entry.

5.6 Ligand geometry [i](#)

Of 12 ligands modelled in this entry, 4 are modelled with single atom - leaving 8 for Mogul analysis.

In the following table, the Counts columns list the number of bonds (or angles) for which Mogul statistics could be retrieved, the number of bonds (or angles) that are observed in the model and the number of bonds (or angles) that are defined in the Chemical Component Dictionary. The Link column lists molecule types, if any, to which the group is linked. The Z score for a bond length (or angle) is the number of standard deviations the observed value is removed from the expected value. A bond length (or angle) with $|Z| > 2$ is considered an outlier worth inspection. RMSZ is the root-mean-square of all Z scores of the bond lengths (or angles).

Mol	Type	Chain	Res	Link	Bond lengths			Bond angles		
					Counts	RMSZ	# Z > 2	Counts	RMSZ	# Z > 2
2	HDD	C	760[A]	1,5	41,52,52	2.22	12 (29%)	34,89,89	2.60	10 (29%)
3	HDE	A	761[B]	1,5	44,52,52	2.64	15 (34%)	42,89,89	3.94	23 (54%)
2	HDD	D	760[A]	1,5	41,52,52	2.45	13 (31%)	34,89,89	3.13	15 (44%)
2	HDD	A	760[A]	1,5	41,52,52	2.24	13 (31%)	34,89,89	2.14	8 (23%)
3	HDE	B	761[B]	1,5	44,52,52	2.48	14 (31%)	42,89,89	3.59	23 (54%)
3	HDE	C	761[B]	1,5	44,52,52	2.58	14 (31%)	42,89,89	3.50	23 (54%)
3	HDE	D	761[B]	1,5	44,52,52	2.55	14 (31%)	42,89,89	3.38	22 (52%)
2	HDD	B	760[A]	1,5	41,52,52	2.07	14 (34%)	34,89,89	3.29	11 (32%)

In the following table, the Chirals column lists the number of chiral outliers, the number of chiral centers analysed, the number of these observed in the model and the number defined in the Chemical Component Dictionary. Similar counts are reported in the Torsion and Rings columns. '-' means no outliers of that kind were identified.

Mol	Type	Chain	Res	Link	Chirals	Torsions	Rings
2	HDD	C	760[A]	1,5	-	2/5/89/89	0/1/9/9
3	HDE	A	761[B]	1,5	1/1/8/10	6/9/89/89	0/1/9/9
2	HDD	D	760[A]	1,5	-	2/5/89/89	0/1/9/9

Continued on next page...

Continued from previous page...

Mol	Type	Chain	Res	Link	Chirals	Torsions	Rings
2	HDD	A	760[A]	1,5	-	2/5/89/89	0/1/9/9
3	HDE	B	761[B]	1,5	-	6/9/89/89	0/1/9/9
3	HDE	C	761[B]	1,5	-	6/9/89/89	0/1/9/9
3	HDE	D	761[B]	1,5	-	6/9/89/89	0/1/9/9
2	HDD	B	760[A]	1,5	-	2/5/89/89	0/1/9/9

All (109) bond length outliers are listed below:

Mol	Chain	Res	Type	Atoms	Z	Observed(Å)	Ideal(Å)
2	D	760[A]	HDD	FE-ND	7.39	2.23	1.95
3	B	761[B]	HDE	CHC-C4B	-7.29	1.43	1.51
3	C	761[B]	HDE	CHC-C4B	-7.27	1.43	1.51
3	A	761[B]	HDE	O1A-CGA	7.16	1.46	1.35
3	D	761[B]	HDE	CHC-C4B	-6.89	1.44	1.51
3	B	761[B]	HDE	CHD-C1D	-6.82	1.44	1.51
2	C	760[A]	HDD	FE-ND	6.56	2.20	1.95
2	A	760[A]	HDD	FE-ND	6.27	2.19	1.95
3	D	761[B]	HDE	CHD-C1D	-6.16	1.44	1.51
3	C	761[B]	HDE	CHD-C4C	-6.10	1.44	1.51
3	A	761[B]	HDE	CHD-C4C	-5.92	1.45	1.51
3	C	761[B]	HDE	CHC-C1C	-5.85	1.45	1.51
3	A	761[B]	HDE	CHC-C1C	-5.74	1.45	1.51
3	D	761[B]	HDE	CHD-C4C	-5.52	1.45	1.51
3	D	761[B]	HDE	CHC-C1C	-5.45	1.45	1.51
2	B	760[A]	HDD	FE-ND	5.45	2.16	1.95
3	C	761[B]	HDE	CHD-C1D	-5.38	1.45	1.51
2	D	760[A]	HDD	CMD-C2D	5.20	1.60	1.53
2	A	760[A]	HDD	OND-C2D	4.96	1.52	1.42
3	A	761[B]	HDE	CHC-C4B	-4.83	1.46	1.51
2	D	760[A]	HDD	CHD-C1D	4.81	1.44	1.35
3	A	761[B]	HDE	C1A-NA	4.74	1.45	1.37
3	B	761[B]	HDE	C4C-C3C	4.68	1.49	1.38
2	D	760[A]	HDD	C3C-C2C	-4.62	1.34	1.40
3	D	761[B]	HDE	O1A-CGA	4.60	1.42	1.35
2	C	760[A]	HDD	C3B-C2B	-4.59	1.34	1.40
3	A	761[B]	HDE	C4C-C3C	4.59	1.49	1.38
3	A	761[B]	HDE	C3B-C2B	4.57	1.51	1.37
2	B	760[A]	HDD	C3C-C2C	-4.50	1.34	1.40
2	C	760[A]	HDD	CMD-C2D	4.44	1.59	1.53
3	C	761[B]	HDE	C4C-C3C	4.43	1.48	1.38
2	C	760[A]	HDD	C3C-C2C	-4.34	1.34	1.40

Continued on next page...

Continued from previous page...

Mol	Chain	Res	Type	Atoms	Z	Observed(Å)	Ideal(Å)
3	C	761[B]	HDE	O1A-CGA	4.33	1.42	1.35
3	A	761[B]	HDE	CHD-C1D	-4.31	1.46	1.51
3	C	761[B]	HDE	C3B-C2B	4.16	1.50	1.37
3	D	761[B]	HDE	C3B-C2B	4.14	1.49	1.37
2	A	760[A]	HDD	O1D-C3D	-4.00	1.40	1.46
3	A	761[B]	HDE	C3C-C2C	3.97	1.49	1.37
3	A	761[B]	HDE	C3D-C2D	3.89	1.49	1.37
3	B	761[B]	HDE	C3B-C2B	3.88	1.49	1.37
3	B	761[B]	HDE	O1A-CGA	3.88	1.41	1.35
3	B	761[B]	HDE	C4A-NA	3.87	1.44	1.37
3	D	761[B]	HDE	C4A-NA	3.82	1.44	1.37
2	D	760[A]	HDD	OND-C2D	3.79	1.49	1.42
3	B	761[B]	HDE	C1A-NA	3.74	1.44	1.37
2	A	760[A]	HDD	C3C-C2C	-3.67	1.35	1.40
3	D	761[B]	HDE	C4C-C3C	3.67	1.47	1.38
2	D	760[A]	HDD	CMC-C2C	3.64	1.58	1.51
2	D	760[A]	HDD	C3B-C2B	-3.57	1.35	1.40
2	B	760[A]	HDD	C3B-C2B	-3.57	1.35	1.40
3	B	761[B]	HDE	CHD-C4C	-3.54	1.47	1.51
3	D	761[B]	HDE	C3C-C2C	3.49	1.48	1.37
3	C	761[B]	HDE	C3D-C2D	3.41	1.47	1.37
2	B	760[A]	HDD	CMD-C2D	3.32	1.57	1.53
3	B	761[B]	HDE	CHC-C1C	-3.31	1.47	1.51
2	D	760[A]	HDD	C3B-CAB	3.30	1.55	1.47
3	D	761[B]	HDE	CMA-C3A	3.30	1.57	1.53
3	B	761[B]	HDE	C3C-C2C	3.23	1.47	1.37
3	B	761[B]	HDE	C4D-CHA	3.19	1.49	1.41
3	C	761[B]	HDE	C1A-NA	3.16	1.43	1.37
2	A	760[A]	HDD	CMB-C2B	3.09	1.59	1.51
2	C	760[A]	HDD	O1D-C3D	-3.07	1.41	1.46
2	C	760[A]	HDD	C3B-C4B	3.06	1.45	1.41
2	A	760[A]	HDD	C4A-NA	3.06	1.42	1.36
3	C	761[B]	HDE	CMA-C3A	3.04	1.57	1.53
3	A	761[B]	HDE	C4D-CHA	3.01	1.49	1.41
2	C	760[A]	HDD	CHD-C1D	3.00	1.41	1.35
2	A	760[A]	HDD	C3B-C2B	-2.99	1.36	1.40
3	D	761[B]	HDE	C4D-CHA	2.95	1.49	1.41
3	C	761[B]	HDE	C3C-C2C	2.93	1.46	1.37
3	A	761[B]	HDE	C1C-C2C	2.93	1.45	1.38
2	D	760[A]	HDD	C1A-NA	2.93	1.42	1.36
2	B	760[A]	HDD	CMC-C2C	2.91	1.57	1.51
2	D	760[A]	HDD	CMA-C3A	2.87	1.57	1.51

Continued on next page...

Continued from previous page...

Mol	Chain	Res	Type	Atoms	Z	Observed(Å)	Ideal(Å)
2	A	760[A]	HDD	C3B-C4B	2.86	1.45	1.41
2	A	760[A]	HDD	CMC-C2C	2.78	1.57	1.51
3	D	761[B]	HDE	C1A-NA	2.77	1.42	1.37
2	A	760[A]	HDD	C1C-NC	2.77	1.42	1.36
2	C	760[A]	HDD	C1C-NC	2.77	1.42	1.36
2	A	760[A]	HDD	CMD-C2D	2.73	1.56	1.53
2	B	760[A]	HDD	C3B-C4B	2.70	1.45	1.41
3	A	761[B]	HDE	C1B-CHB	2.67	1.48	1.41
3	B	761[B]	HDE	C1B-NB	2.65	1.41	1.36
2	C	760[A]	HDD	CMC-C2C	2.65	1.56	1.51
2	B	760[A]	HDD	C4A-NA	2.62	1.41	1.36
2	B	760[A]	HDD	CHD-C1D	2.61	1.40	1.35
2	C	760[A]	HDD	C4A-NA	2.61	1.41	1.36
2	B	760[A]	HDD	C4D-ND	2.53	1.42	1.37
2	A	760[A]	HDD	C3B-CAB	2.52	1.53	1.47
3	D	761[B]	HDE	C3D-C2D	2.47	1.45	1.37
3	C	761[B]	HDE	C4D-CHA	2.44	1.47	1.41
2	B	760[A]	HDD	C1A-NA	2.44	1.41	1.36
2	C	760[A]	HDD	C3B-CAB	2.36	1.52	1.47
3	B	761[B]	HDE	C3D-C2D	2.36	1.44	1.37
3	B	761[B]	HDE	C1C-C2C	2.30	1.44	1.38
2	B	760[A]	HDD	C4A-CHB	-2.28	1.34	1.41
2	B	760[A]	HDD	C3B-CAB	2.28	1.52	1.47
2	D	760[A]	HDD	C3B-C4B	2.22	1.44	1.41
3	C	761[B]	HDE	C4A-NA	2.19	1.41	1.37
2	C	760[A]	HDD	CHA-C4D	2.19	1.39	1.35
2	D	760[A]	HDD	C4C-NC	2.14	1.40	1.36
3	D	761[B]	HDE	ONA-C3A	2.10	1.46	1.42
3	A	761[B]	HDE	C1B-NB	2.08	1.40	1.36
3	A	761[B]	HDE	O2D-CGD	-2.07	1.24	1.30
2	D	760[A]	HDD	O1D-C3D	-2.06	1.43	1.46
2	B	760[A]	HDD	CMA-C3A	2.04	1.55	1.51
3	C	761[B]	HDE	C2A-C3A	-2.02	1.50	1.55
2	B	760[A]	HDD	C4C-CHD	-2.02	1.35	1.41
2	A	760[A]	HDD	CHD-C1D	2.02	1.39	1.35

All (135) bond angle outliers are listed below:

Mol	Chain	Res	Type	Atoms	Z	Observed(°)	Ideal(°)
3	D	761[B]	HDE	C2D-C1D-ND	10.69	117.32	109.44
3	B	761[B]	HDE	C2D-C1D-ND	10.26	117.00	109.44
3	A	761[B]	HDE	C2C-C1C-NC	10.15	116.92	109.44

Continued on next page...

Continued from previous page...

Mol	Chain	Res	Type	Atoms	Z	Observed(°)	Ideal(°)
3	C	761[B]	HDE	C2C-C1C-NC	10.14	116.92	109.44
2	B	760[A]	HDD	O1D-CGD-O2D	10.03	129.26	120.81
2	B	760[A]	HDD	O1D-CGD-CBD	-9.94	101.11	110.17
3	B	761[B]	HDE	C2C-C1C-NC	9.52	116.46	109.44
3	C	761[B]	HDE	C2D-C1D-ND	9.34	116.33	109.44
3	A	761[B]	HDE	C2D-C1D-ND	9.24	116.25	109.44
2	D	760[A]	HDD	O1D-CGD-O2D	9.02	128.41	120.81
3	B	761[B]	HDE	C3B-C4B-NB	8.42	115.38	109.51
3	A	761[B]	HDE	O1A-CGA-O2A	8.11	127.64	120.81
2	C	760[A]	HDD	O1D-CGD-O2D	8.03	127.58	120.81
2	D	760[A]	HDD	O1D-CGD-CBD	-7.64	103.20	110.17
3	C	761[B]	HDE	C3B-C4B-NB	7.34	114.62	109.51
3	D	761[B]	HDE	C2C-C1C-NC	7.27	114.80	109.44
2	A	760[A]	HDD	CAD-CBD-CGD	-6.99	94.10	104.48
2	D	760[A]	HDD	C2B-C3B-C4B	6.68	111.56	106.90
2	C	760[A]	HDD	C2B-C3B-C4B	6.52	111.45	106.90
2	D	760[A]	HDD	C3D-O1D-CGD	6.49	117.19	111.14
3	A	761[B]	HDE	C2A-O1A-CGA	6.45	117.16	111.14
3	B	761[B]	HDE	C1B-C2B-C3B	-6.15	102.71	107.00
3	A	761[B]	HDE	C3B-C4B-NB	6.06	113.73	109.51
3	B	761[B]	HDE	CBC-CAC-C3C	-5.92	98.14	112.32
3	D	761[B]	HDE	C1B-CHB-C4A	-5.79	119.00	130.04
3	D	761[B]	HDE	C1B-C2B-C3B	-5.76	102.99	107.00
3	A	761[B]	HDE	C3C-C4C-NC	5.66	113.45	109.51
3	A	761[B]	HDE	CAB-C3B-C4B	-5.62	120.42	127.19
2	A	760[A]	HDD	C2B-C3B-C4B	5.58	110.79	106.90
3	D	761[B]	HDE	CBC-CAC-C3C	-5.32	99.58	112.32
2	B	760[A]	HDD	C2B-C3B-C4B	5.26	110.57	106.90
3	A	761[B]	HDE	CBA-CAA-C2A	5.22	111.43	103.98
3	A	761[B]	HDE	O1A-CGA-CBA	-5.18	105.45	110.17
2	B	760[A]	HDD	C3D-O1D-CGD	5.16	115.95	111.14
3	C	761[B]	HDE	C1B-CHB-C4A	-5.11	120.30	130.04
3	C	761[B]	HDE	CMB-C2B-C1B	-4.98	121.17	128.46
3	D	761[B]	HDE	CMB-C2B-C3B	4.77	133.93	124.94
3	A	761[B]	HDE	CMB-C2B-C1B	-4.74	121.51	128.46
3	D	761[B]	HDE	CBB-CAB-C3B	-4.69	101.07	112.32
3	C	761[B]	HDE	CBC-CAC-C3C	-4.66	101.16	112.32
3	B	761[B]	HDE	CAD-CBD-CGD	-4.63	101.35	113.83
3	C	761[B]	HDE	CMA-C3A-C4A	-4.62	104.86	112.68
3	A	761[B]	HDE	CAD-CBD-CGD	-4.61	101.41	113.83
2	C	760[A]	HDD	O1D-CGD-CBD	-4.53	106.04	110.17
2	B	760[A]	HDD	CMC-C2C-C1C	-4.52	121.84	128.46

Continued on next page...

Continued from previous page...

Mol	Chain	Res	Type	Atoms	Z	Observed(°)	Ideal(°)
3	A	761[B]	HDE	CMB-C2B-C3B	4.45	133.33	124.94
3	B	761[B]	HDE	C4C-CHD-C1D	4.41	124.44	113.19
3	C	761[B]	HDE	CMB-C2B-C3B	4.38	133.20	124.94
2	B	760[A]	HDD	CAA-CBA-CGA	-4.37	102.07	113.83
3	D	761[B]	HDE	C3A-C4A-CHB	-4.27	117.63	124.27
2	C	760[A]	HDD	OND-C2D-CMD	-4.20	101.34	109.45
3	B	761[B]	HDE	O1A-CGA-CBA	4.10	113.91	110.17
2	B	760[A]	HDD	C3B-C4B-NB	-4.10	103.21	110.94
3	A	761[B]	HDE	C4B-CHC-C1C	4.08	123.60	113.19
3	D	761[B]	HDE	C3B-C4B-NB	4.08	112.35	109.51
3	C	761[B]	HDE	C4C-CHD-C1D	4.06	123.57	113.19
2	C	760[A]	HDD	C3D-O1D-CGD	3.78	114.67	111.14
3	A	761[B]	HDE	C1B-CHB-C4A	-3.75	122.90	130.04
3	D	761[B]	HDE	CMB-C2B-C1B	-3.72	123.00	128.46
3	D	761[B]	HDE	C4D-CHA-C1A	-3.67	123.03	130.04
2	D	760[A]	HDD	CAA-CBA-CGA	-3.65	103.99	113.83
3	A	761[B]	HDE	CMC-C2C-C1C	3.64	131.31	127.28
3	B	761[B]	HDE	CBA-CAA-C2A	3.63	109.16	103.98
3	C	761[B]	HDE	C4B-CHC-C1C	3.62	122.44	113.19
3	A	761[B]	HDE	CMA-C3A-C4A	-3.60	106.58	112.68
2	A	760[A]	HDD	CAA-CBA-CGA	-3.57	104.21	113.83
3	B	761[B]	HDE	C4B-CHC-C1C	3.53	122.20	113.19
3	D	761[B]	HDE	C4B-CHC-C1C	3.52	122.19	113.19
3	C	761[B]	HDE	CMD-C2D-C3D	3.47	131.49	124.94
2	B	760[A]	HDD	OND-C2D-CMD	-3.47	102.74	109.45
3	B	761[B]	HDE	C4D-CHA-C1A	-3.41	123.53	130.04
2	A	760[A]	HDD	C3B-C4B-NB	-3.37	104.59	110.94
3	A	761[B]	HDE	ONA-C3A-CMA	-3.32	103.04	109.45
2	D	760[A]	HDD	CBD-CAD-C3D	-3.27	99.32	103.98
3	B	761[B]	HDE	CMB-C2B-C3B	3.27	131.11	124.94
2	C	760[A]	HDD	CAA-CBA-CGA	-3.26	105.04	113.83
3	C	761[B]	HDE	CBB-CAB-C3B	-3.26	104.52	112.32
3	D	761[B]	HDE	O1A-CGA-O2A	3.23	123.53	120.81
3	C	761[B]	HDE	CMC-C2C-C3C	3.22	131.01	124.94
2	C	760[A]	HDD	C3B-C4B-NB	-3.22	104.87	110.94
2	D	760[A]	HDD	CMA-C3A-C4A	-3.20	123.77	128.46
3	C	761[B]	HDE	CAD-CBD-CGD	-3.20	105.21	113.83
3	D	761[B]	HDE	CHB-C4A-NA	3.19	128.69	124.28
3	C	761[B]	HDE	C3A-C4A-CHB	-3.16	119.35	124.27
3	D	761[B]	HDE	C4C-CHD-C1D	3.14	121.21	113.19
3	D	761[B]	HDE	CMA-C3A-C4A	-3.06	107.50	112.68
3	A	761[B]	HDE	CBC-CAC-C3C	-3.06	105.00	112.32

Continued on next page...

Continued from previous page...

Mol	Chain	Res	Type	Atoms	Z	Observed(°)	Ideal(°)
3	A	761[B]	HDE	C4C-CHD-C1D	3.05	120.98	113.19
2	B	760[A]	HDD	C1A-CHA-C4D	-3.02	124.28	130.04
3	C	761[B]	HDE	C4D-CHA-C1A	-3.00	124.31	130.04
2	D	760[A]	HDD	C1A-CHA-C4D	-2.98	124.35	130.04
2	D	760[A]	HDD	C3B-C4B-NB	-2.96	105.36	110.94
3	D	761[B]	HDE	CAD-CBD-CGD	-2.93	105.93	113.83
3	D	761[B]	HDE	CAB-C3B-C4B	-2.92	123.67	127.19
3	B	761[B]	HDE	CMC-C2C-C1C	2.90	130.49	127.28
3	B	761[B]	HDE	C1B-CHB-C4A	-2.83	124.65	130.04
3	C	761[B]	HDE	O1A-C2A-CAA	2.80	108.23	103.06
3	B	761[B]	HDE	C3A-C4A-CHB	-2.79	119.93	124.27
3	D	761[B]	HDE	CBA-CAA-C2A	2.79	107.95	103.98
3	A	761[B]	HDE	CMD-C2D-C3D	2.79	130.19	124.94
2	A	760[A]	HDD	C2D-C1D-CHD	2.78	128.59	124.27
3	B	761[B]	HDE	C1C-C2C-C3C	-2.77	99.98	106.20
2	C	760[A]	HDD	CMC-C2C-C1C	-2.76	124.41	128.46
3	A	761[B]	HDE	C1B-C2B-C3B	-2.72	105.10	107.00
3	B	761[B]	HDE	CAA-CBA-CGA	-2.72	100.44	104.48
3	C	761[B]	HDE	O1A-CGA-O2A	2.67	123.06	120.81
2	C	760[A]	HDD	CHA-C4D-ND	-2.67	120.61	124.28
2	D	760[A]	HDD	C4A-C3A-C2A	2.66	108.85	107.00
3	C	761[B]	HDE	CMD-C2D-C1D	-2.66	124.32	127.28
3	B	761[B]	HDE	ONA-C3A-CMA	-2.64	104.35	109.45
3	C	761[B]	HDE	C2A-O1A-CGA	-2.64	108.68	111.14
2	B	760[A]	HDD	CBD-CAD-C3D	-2.63	100.23	103.98
2	D	760[A]	HDD	O2A-CGA-CBA	2.58	122.14	114.00
3	C	761[B]	HDE	CAC-C3C-C4C	-2.55	124.12	127.19
2	A	760[A]	HDD	CMA-C3A-C4A	-2.52	124.77	128.46
3	D	761[B]	HDE	ONA-C3A-CMA	2.48	114.25	109.45
3	D	761[B]	HDE	CHA-C1A-NA	2.46	127.67	124.28
3	B	761[B]	HDE	C3C-C4C-NC	-2.45	107.80	109.51
3	A	761[B]	HDE	C4D-CHA-C1A	-2.41	125.45	130.04
2	D	760[A]	HDD	OND-C2D-CMD	-2.39	104.83	109.45
3	B	761[B]	HDE	CMC-C2C-C3C	2.38	129.43	124.94
2	A	760[A]	HDD	C4A-C3A-C2A	2.36	108.64	107.00
2	B	760[A]	HDD	C3C-C4C-NC	-2.36	106.17	109.21
3	B	761[B]	HDE	C2A-O1A-CGA	-2.31	108.99	111.14
3	A	761[B]	HDE	CAD-C3D-C2D	2.31	133.88	127.25
3	C	761[B]	HDE	CHA-C1A-NA	2.29	127.44	124.28
2	D	760[A]	HDD	C4C-CHD-C1D	-2.28	125.69	130.04
2	C	760[A]	HDD	CMD-C2D-C1D	2.27	116.53	112.68
2	D	760[A]	HDD	O1A-CGA-CBA	-2.26	115.92	123.09

Continued on next page...

Continued from previous page...

Mol	Chain	Res	Type	Atoms	Z	Observed(°)	Ideal(°)
3	C	761[B]	HDE	C1C-C2C-C3C	-2.24	101.18	106.20
3	B	761[B]	HDE	O1A-CGA-O2A	-2.11	119.03	120.81
2	A	760[A]	HDD	CMC-C2C-C1C	-2.08	125.41	128.46
3	B	761[B]	HDE	CMD-C2D-C1D	2.07	129.58	127.28
3	D	761[B]	HDE	O1A-C2A-CAA	2.03	106.82	103.06
2	D	760[A]	HDD	CMC-C2C-C1C	-2.03	125.48	128.46

All (1) chirality outliers are listed below:

Mol	Chain	Res	Type	Atom
3	A	761[B]	HDE	NA

All (32) torsion outliers are listed below:

Mol	Chain	Res	Type	Atoms
3	A	761[B]	HDE	C2B-C3B-CAB-CBB
3	A	761[B]	HDE	C4B-C3B-CAB-CBB
3	A	761[B]	HDE	C2C-C3C-CAC-CBC
3	A	761[B]	HDE	C4C-C3C-CAC-CBC
3	B	761[B]	HDE	C2B-C3B-CAB-CBB
3	B	761[B]	HDE	C4B-C3B-CAB-CBB
3	B	761[B]	HDE	C2C-C3C-CAC-CBC
3	B	761[B]	HDE	C4C-C3C-CAC-CBC
3	C	761[B]	HDE	C2B-C3B-CAB-CBB
3	C	761[B]	HDE	C4B-C3B-CAB-CBB
3	C	761[B]	HDE	C2C-C3C-CAC-CBC
3	C	761[B]	HDE	C4C-C3C-CAC-CBC
3	D	761[B]	HDE	C2B-C3B-CAB-CBB
3	D	761[B]	HDE	C4B-C3B-CAB-CBB
3	D	761[B]	HDE	C2C-C3C-CAC-CBC
3	D	761[B]	HDE	C4C-C3C-CAC-CBC
2	D	760[A]	HDD	CAA-CBA-CGA-O1A
2	C	760[A]	HDD	CAA-CBA-CGA-O1A
3	C	761[B]	HDE	CAD-CBD-CGD-O1D
2	C	760[A]	HDD	CAA-CBA-CGA-O2A
3	C	761[B]	HDE	CAD-CBD-CGD-O2D
2	A	760[A]	HDD	CAA-CBA-CGA-O1A
3	B	761[B]	HDE	CAD-CBD-CGD-O2D
2	A	760[A]	HDD	CAA-CBA-CGA-O2A
2	B	760[A]	HDD	CAA-CBA-CGA-O2A
3	A	761[B]	HDE	CAD-CBD-CGD-O1D
3	A	761[B]	HDE	CAD-CBD-CGD-O2D

Continued on next page...

Continued from previous page...

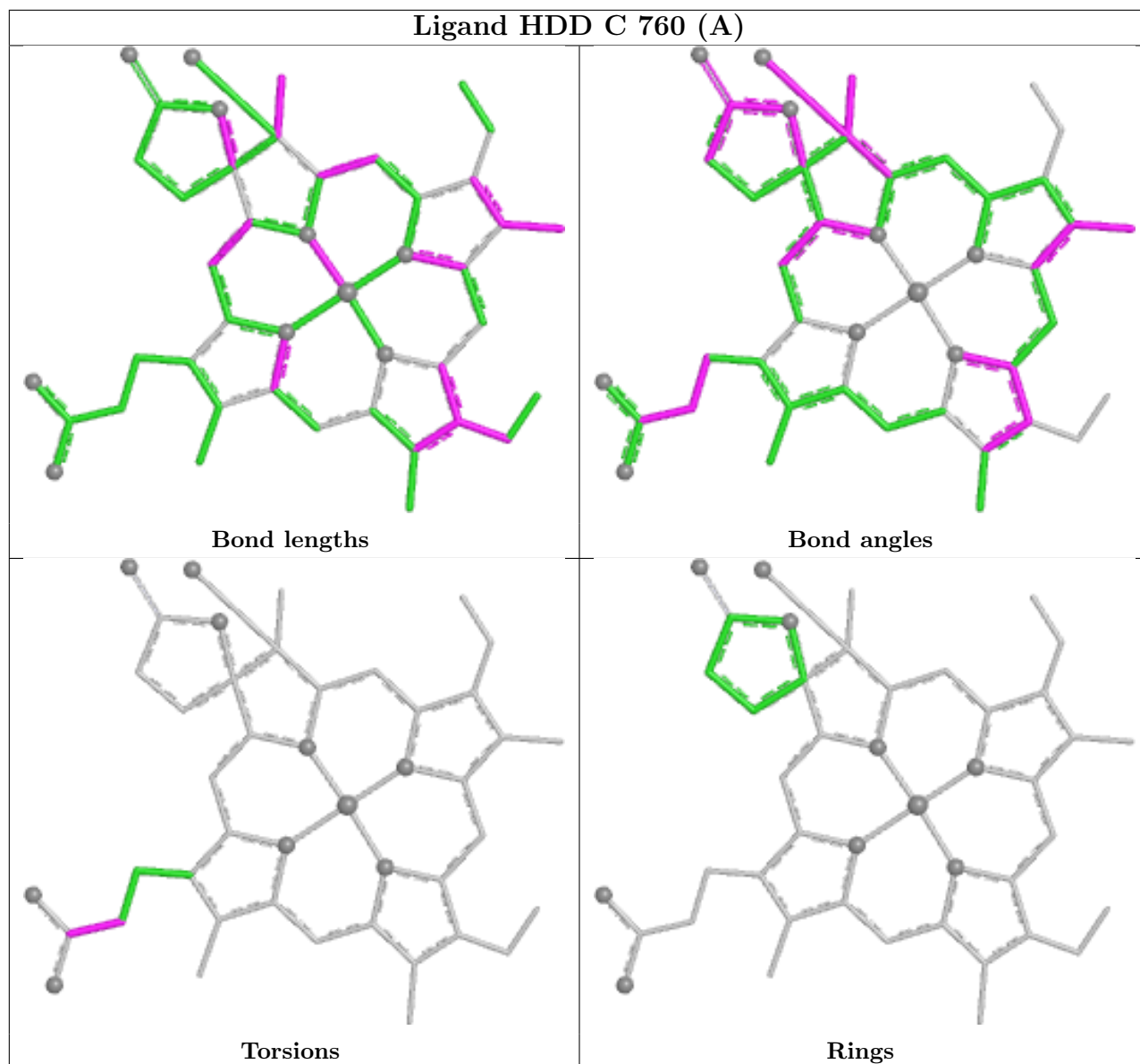
Mol	Chain	Res	Type	Atoms
3	D	761[B]	HDE	CAD-CBD-CGD-O2D
2	B	760[A]	HDD	CAA-CBA-CGA-O1A
3	B	761[B]	HDE	CAD-CBD-CGD-O1D
3	D	761[B]	HDE	CAD-CBD-CGD-O1D
2	D	760[A]	HDD	CAA-CBA-CGA-O2A

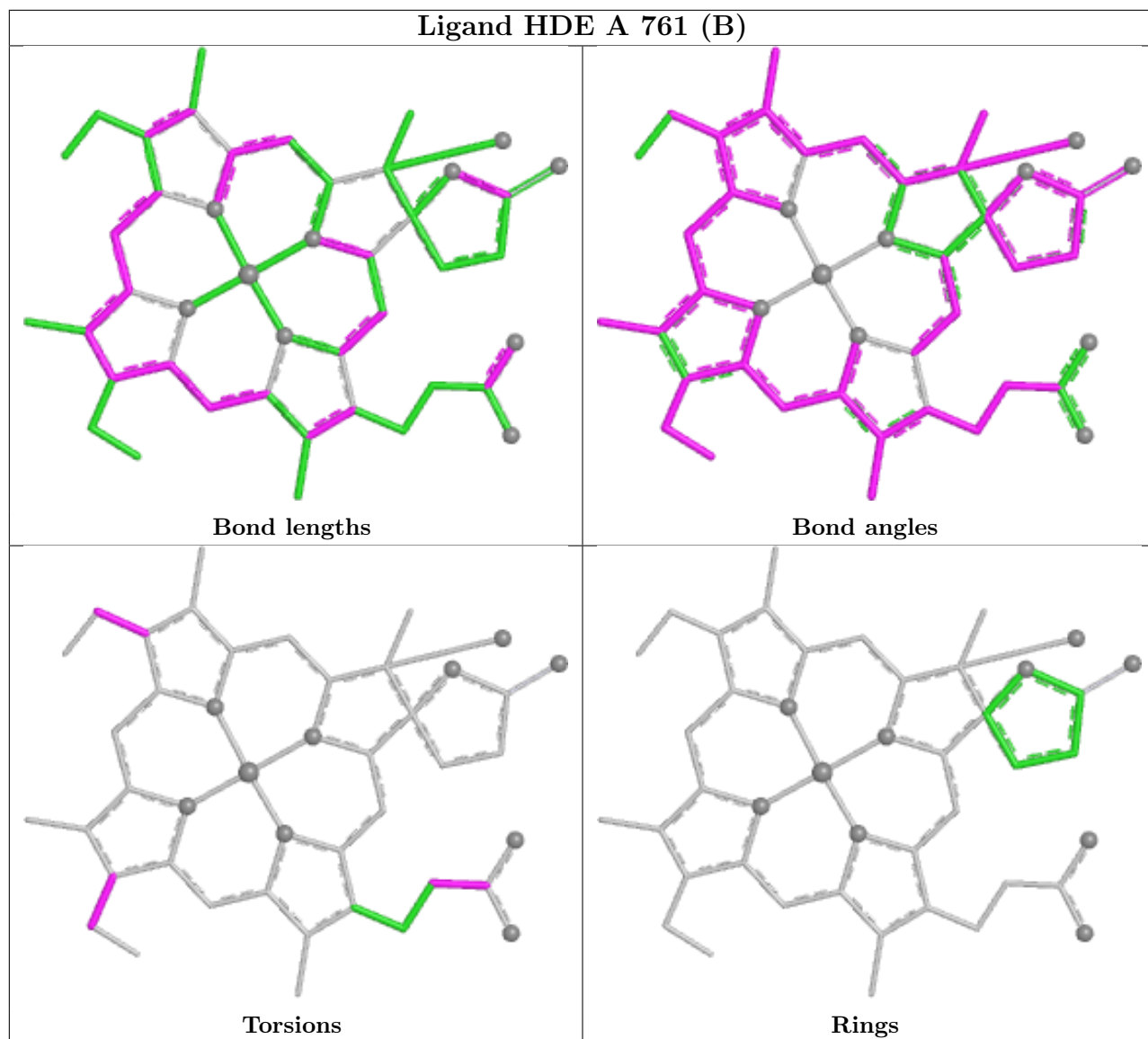
There are no ring outliers.

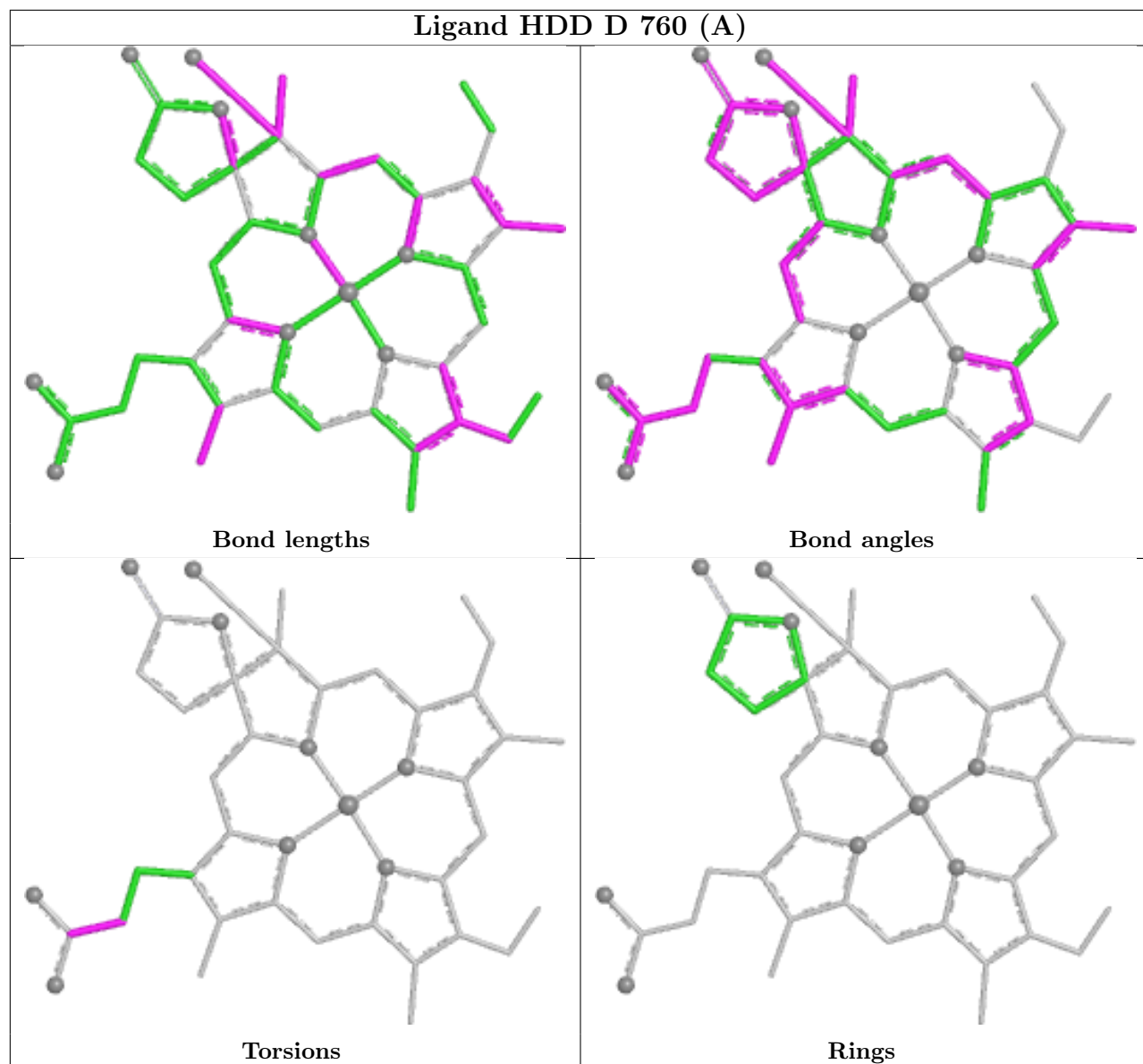
8 monomers are involved in 98 short contacts:

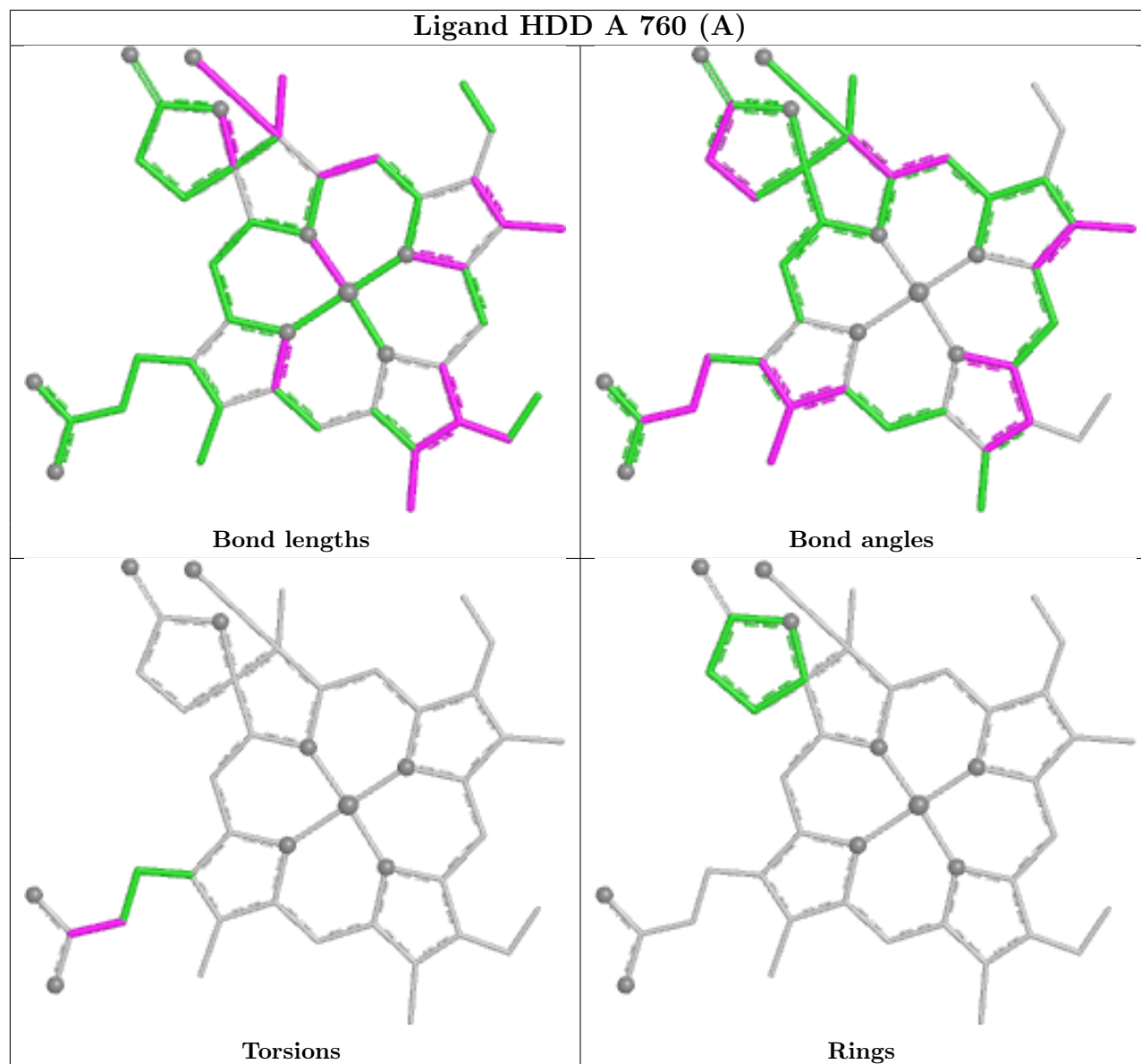
Mol	Chain	Res	Type	Clashes	Symm-Clashes
2	C	760[A]	HDD	19	0
3	A	761[B]	HDE	10	0
2	D	760[A]	HDD	11	0
2	A	760[A]	HDD	12	0
3	B	761[B]	HDE	10	0
3	C	761[B]	HDE	8	0
3	D	761[B]	HDE	9	0
2	B	760[A]	HDD	19	0

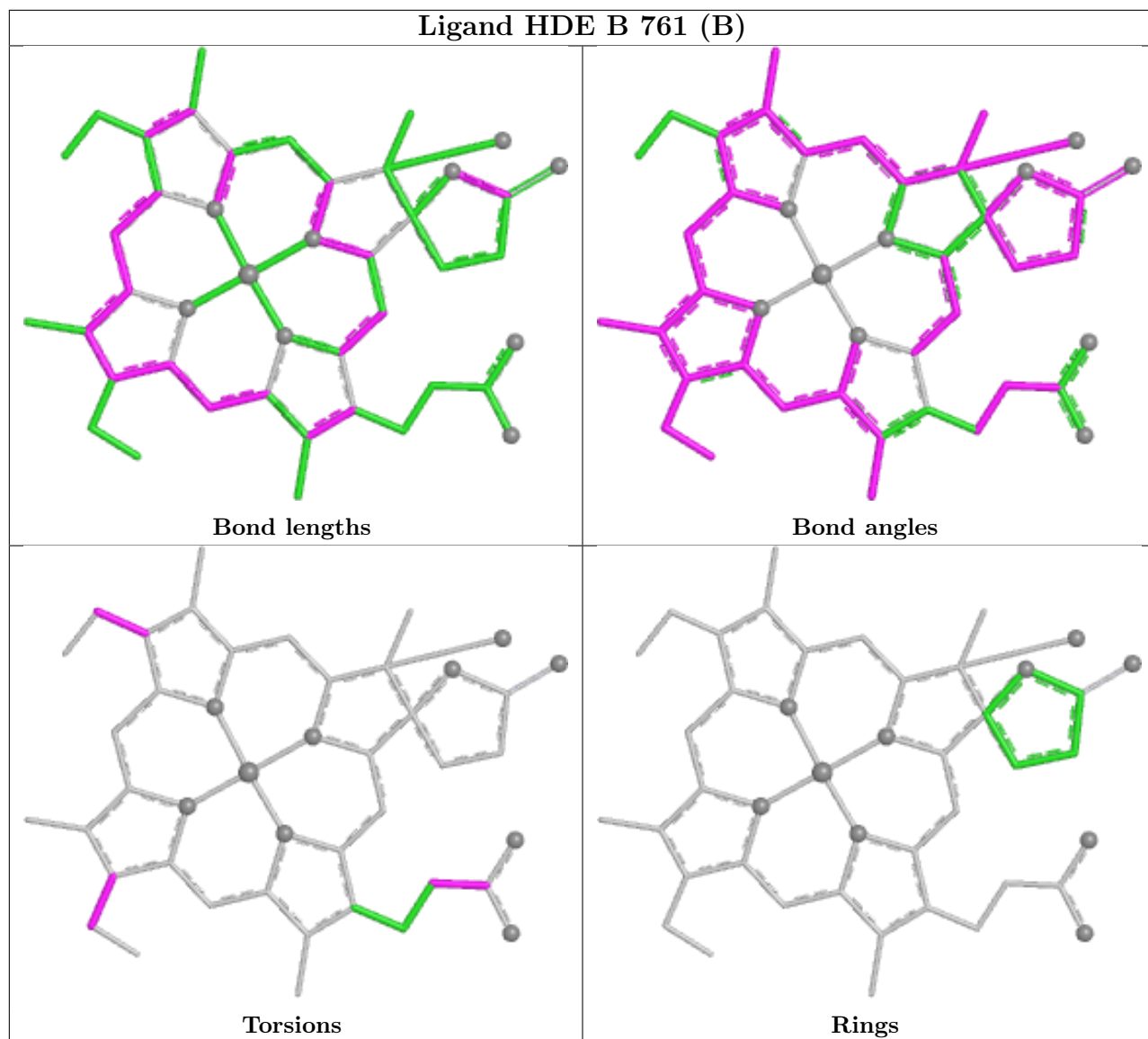
The following is a two-dimensional graphical depiction of Mogul quality analysis of bond lengths, bond angles, torsion angles, and ring geometry for all instances of the Ligand of Interest. In addition, ligands with molecular weight > 250 and outliers as shown on the validation Tables will also be included. For torsion angles, if less than 5% of the Mogul distribution of torsion angles is within 10 degrees of the torsion angle in question, then that torsion angle is considered an outlier. Any bond that is central to one or more torsion angles identified as an outlier by Mogul will be highlighted in the graph. For rings, the root-mean-square deviation (RMSD) between the ring in question and similar rings identified by Mogul is calculated over all ring torsion angles. If the average RMSD is greater than 60 degrees and the minimal RMSD between the ring in question and any Mogul-identified rings is also greater than 60 degrees, then that ring is considered an outlier. The outliers are highlighted in purple. The color gray indicates Mogul did not find sufficient equivalents in the CSD to analyse the geometry.

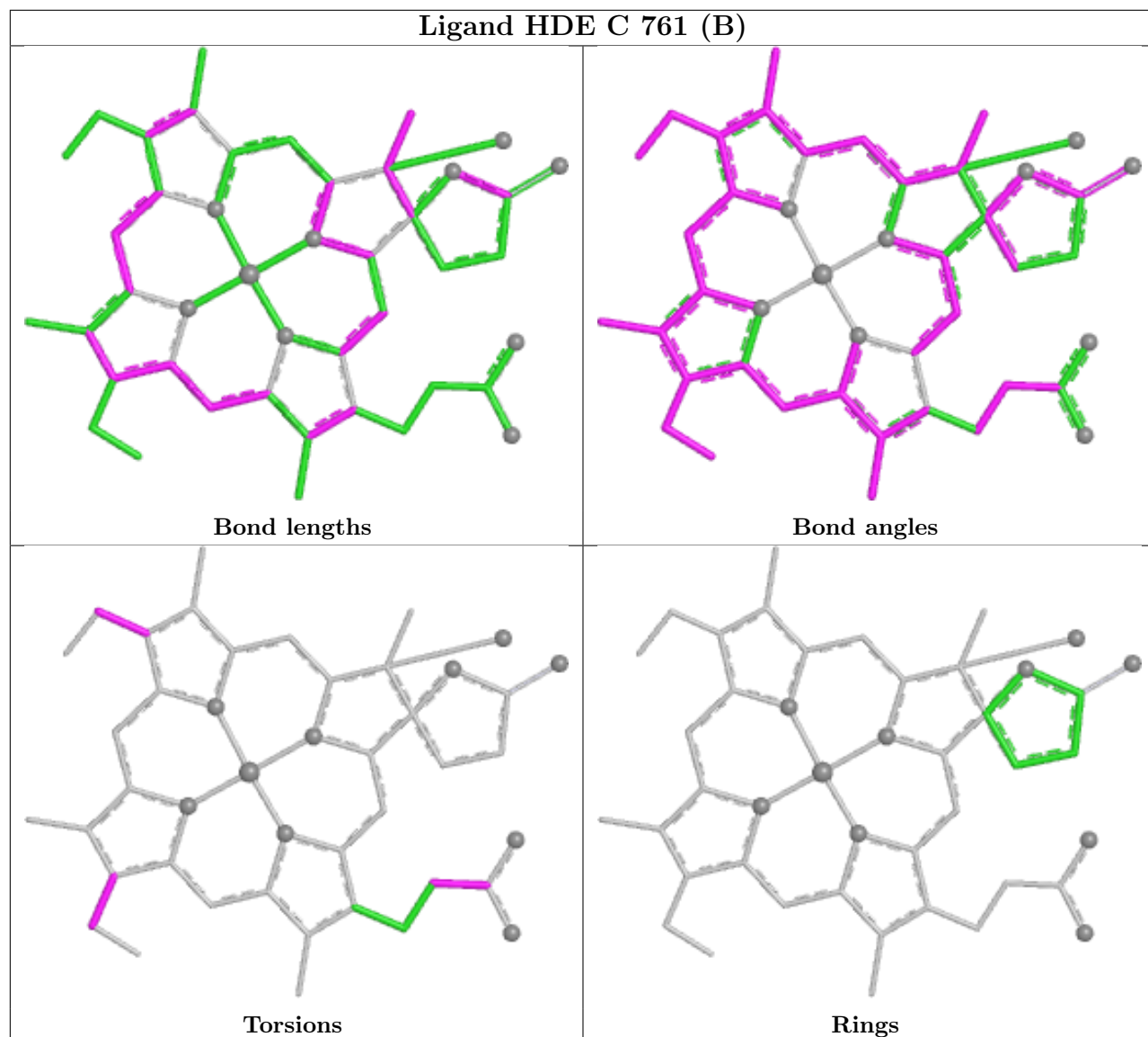


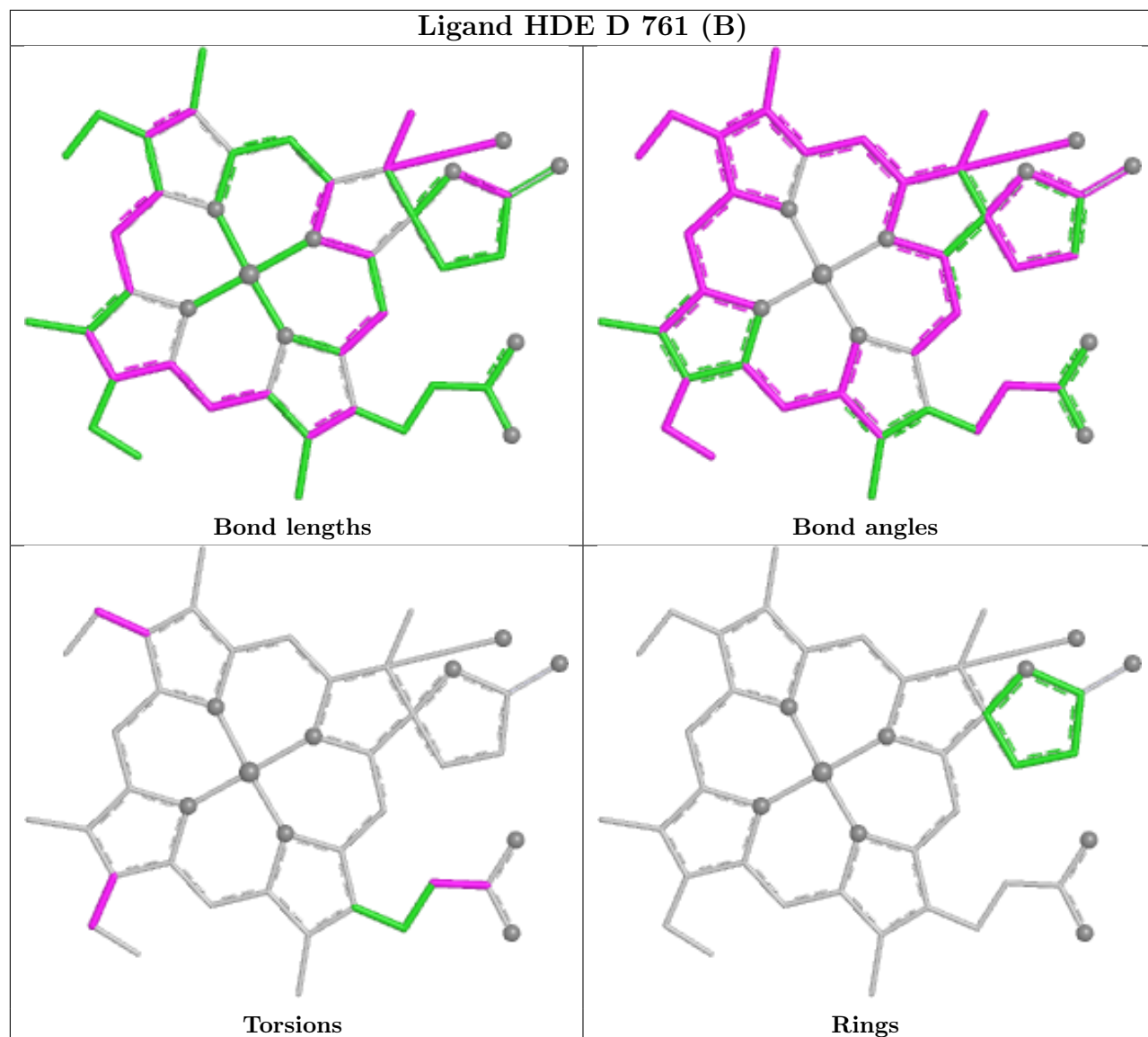


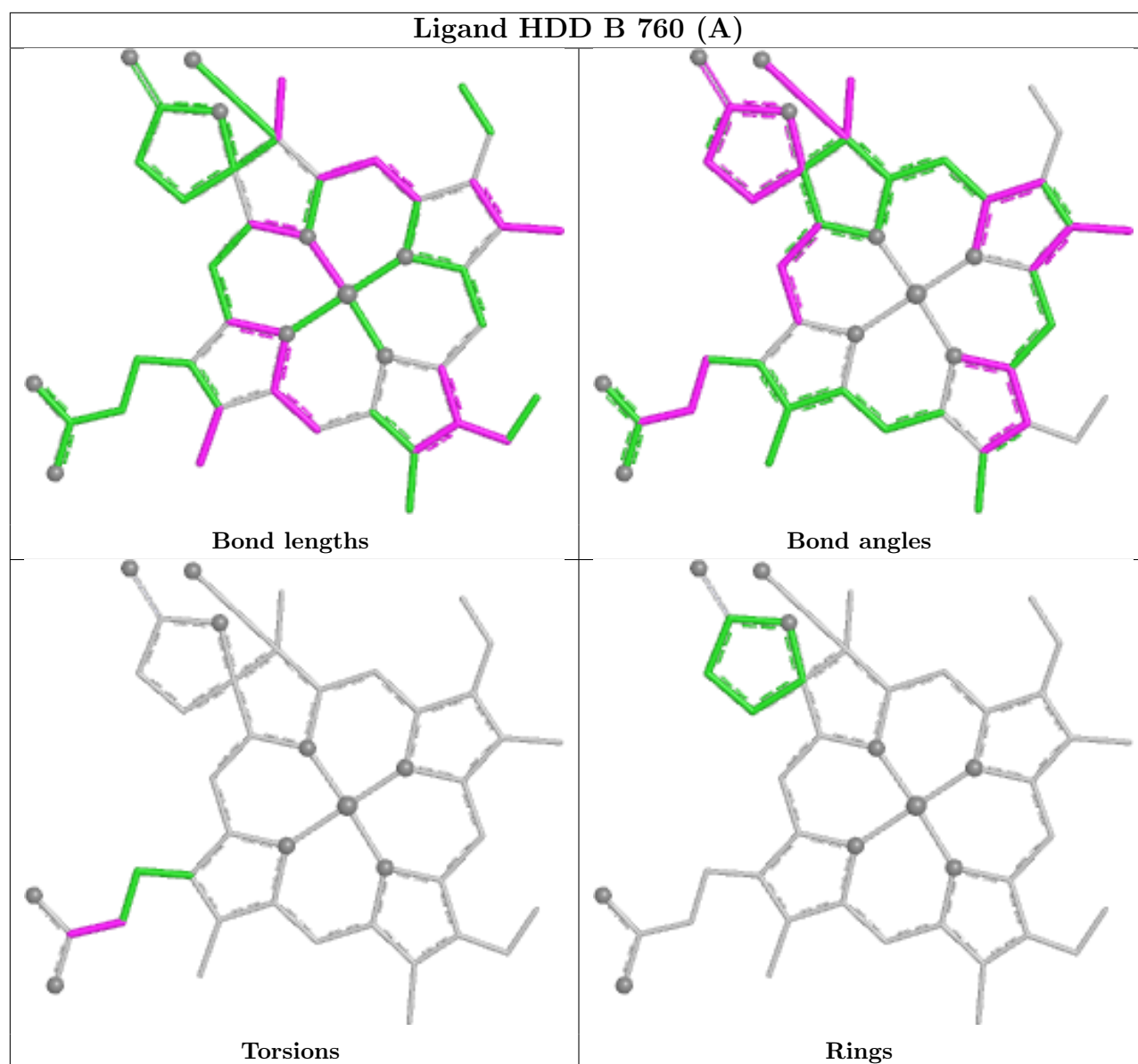












5.7 Other polymers [i](#)

There are no such residues in this entry.

5.8 Polymer linkage issues [i](#)

There are no chain breaks in this entry.

6 Fit of model and data [i](#)

6.1 Protein, DNA and RNA chains [i](#)

In the following table, the column labelled ‘#RSRZ > 2’ contains the number (and percentage) of RSRZ outliers, followed by percent RSRZ outliers for the chain as percentile scores relative to all X-ray entries and entries of similar resolution. The OWAB column contains the minimum, median, 95th percentile and maximum values of the occupancy-weighted average B-factor per residue. The column labelled ‘Q < 0.9’ lists the number of (and percentage) of residues with an average occupancy less than 0.9.

Mol	Chain	Analysed	<RSRZ>	#RSRZ>2	OWAB(Å ²)	Q<0.9
1	A	726/753 (96%)	-0.76	4 (0%) 85 88	3, 10, 25, 45	7 (0%)
1	B	726/753 (96%)	-0.60	5 (0%) 84 87	3, 12, 32, 47	7 (0%)
1	C	726/753 (96%)	-0.64	3 (0%) 89 91	3, 12, 31, 46	6 (0%)
1	D	726/753 (96%)	-0.75	2 (0%) 90 92	3, 10, 26, 45	9 (1%)
All	All	2904/3012 (96%)	-0.69	14 (0%) 87 89	3, 11, 29, 47	29 (0%)

All (14) RSRZ outliers are listed below:

Mol	Chain	Res	Type	RSRZ
1	A	28	SER	4.7
1	D	28	SER	3.5
1	B	726	GLY	2.9
1	A	713	GLN	2.5
1	B	725	ASP	2.5
1	B	751	ILE	2.3
1	C	724	ALA	2.3
1	A	29	LEU	2.2
1	D	751	ILE	2.2
1	B	583	LYS	2.2
1	B	673	ALA	2.1
1	C	750	LYS	2.0
1	A	751	ILE	2.0
1	C	725	ASP	2.0

6.2 Non-standard residues in protein, DNA, RNA chains [i](#)

There are no non-standard protein/DNA/RNA residues in this entry.

6.3 Carbohydrates [i](#)

There are no monosaccharides in this entry.

6.4 Ligands [i](#)

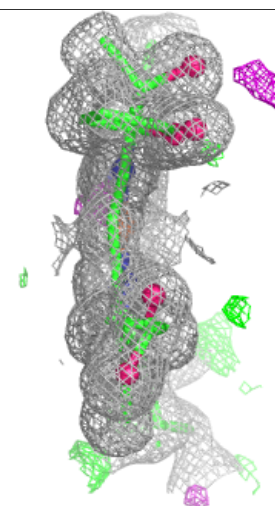
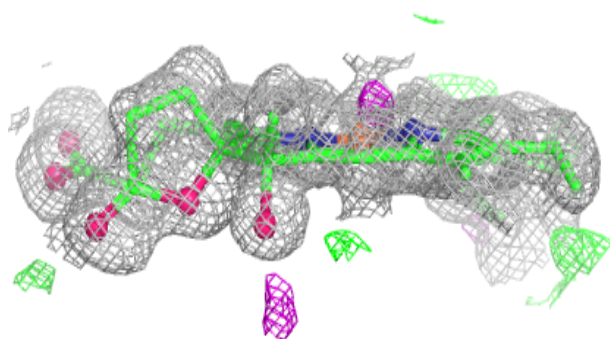
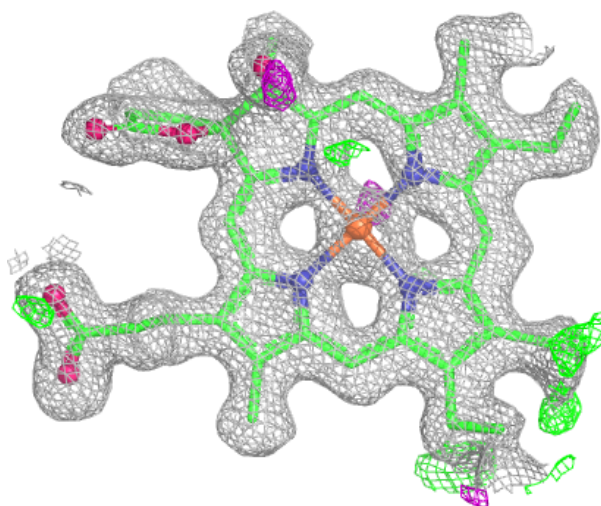
In the following table, the Atoms column lists the number of modelled atoms in the group and the number defined in the chemical component dictionary. The B-factors column lists the minimum, median, 95th percentile and maximum values of B factors of atoms in the group. The column labelled 'Q< 0.9' lists the number of atoms with occupancy less than 0.9.

Mol	Type	Chain	Res	Atoms	RSCC	RSR	B-factors(Å ²)	Q<0.9
4	H2S	C	754[A]	1/1	0.90	0.11	21,21,21,21	1
4	H2S	D	754[A]	1/1	0.92	0.13	23,23,23,23	1
4	H2S	B	754[A]	1/1	0.93	0.07	22,22,22,22	1
4	H2S	A	754[A]	1/1	0.95	0.08	21,21,21,21	1
3	HDE	A	761[B]	44/44	0.98	0.05	4,10,13,14	44
3	HDE	B	761[B]	44/44	0.98	0.06	2,11,15,18	44
3	HDE	C	761[B]	44/44	0.98	0.05	4,11,14,15	44
3	HDE	D	761[B]	44/44	0.98	0.05	4,11,15,19	44
2	HDD	A	760[A]	44/44	0.99	0.04	2,3,10,14	44
2	HDD	B	760[A]	44/44	0.99	0.04	2,4,8,12	44
2	HDD	C	760[A]	44/44	0.99	0.04	2,5,12,17	44
2	HDD	D	760[A]	44/44	0.99	0.04	2,4,10,15	44

The following is a graphical depiction of the model fit to experimental electron density of all instances of the Ligand of Interest. In addition, ligands with molecular weight > 250 and outliers as shown on the geometry validation Tables will also be included. Each fit is shown from different orientation to approximate a three-dimensional view.

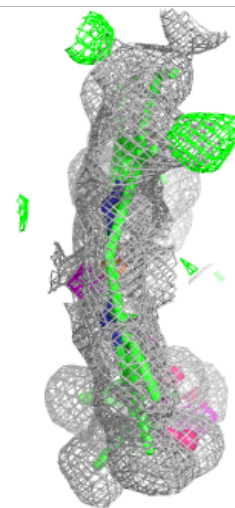
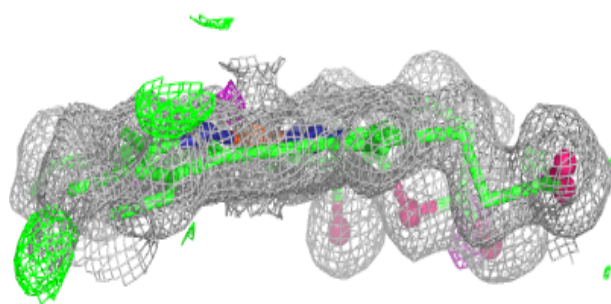
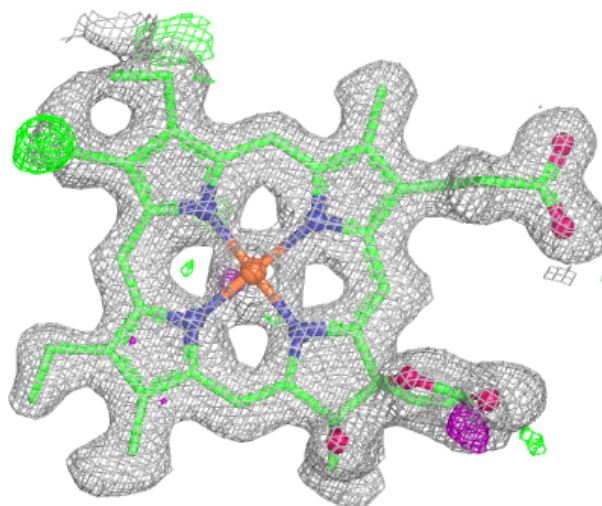
Electron density around HDE A 761 (B):

$2mF_o-DF_c$ (at 0.7 rmsd) in gray
 mF_o-DF_c (at 3 rmsd) in purple (negative)
and green (positive)



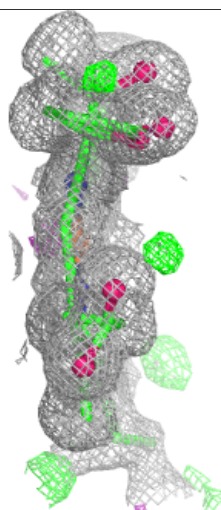
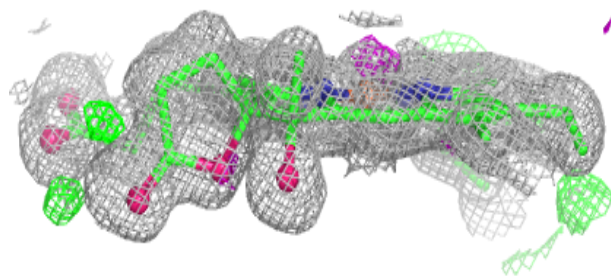
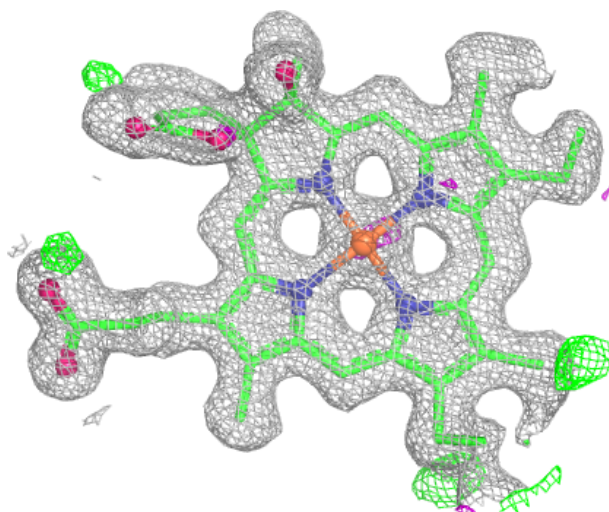
Electron density around HDE B 761 (B):

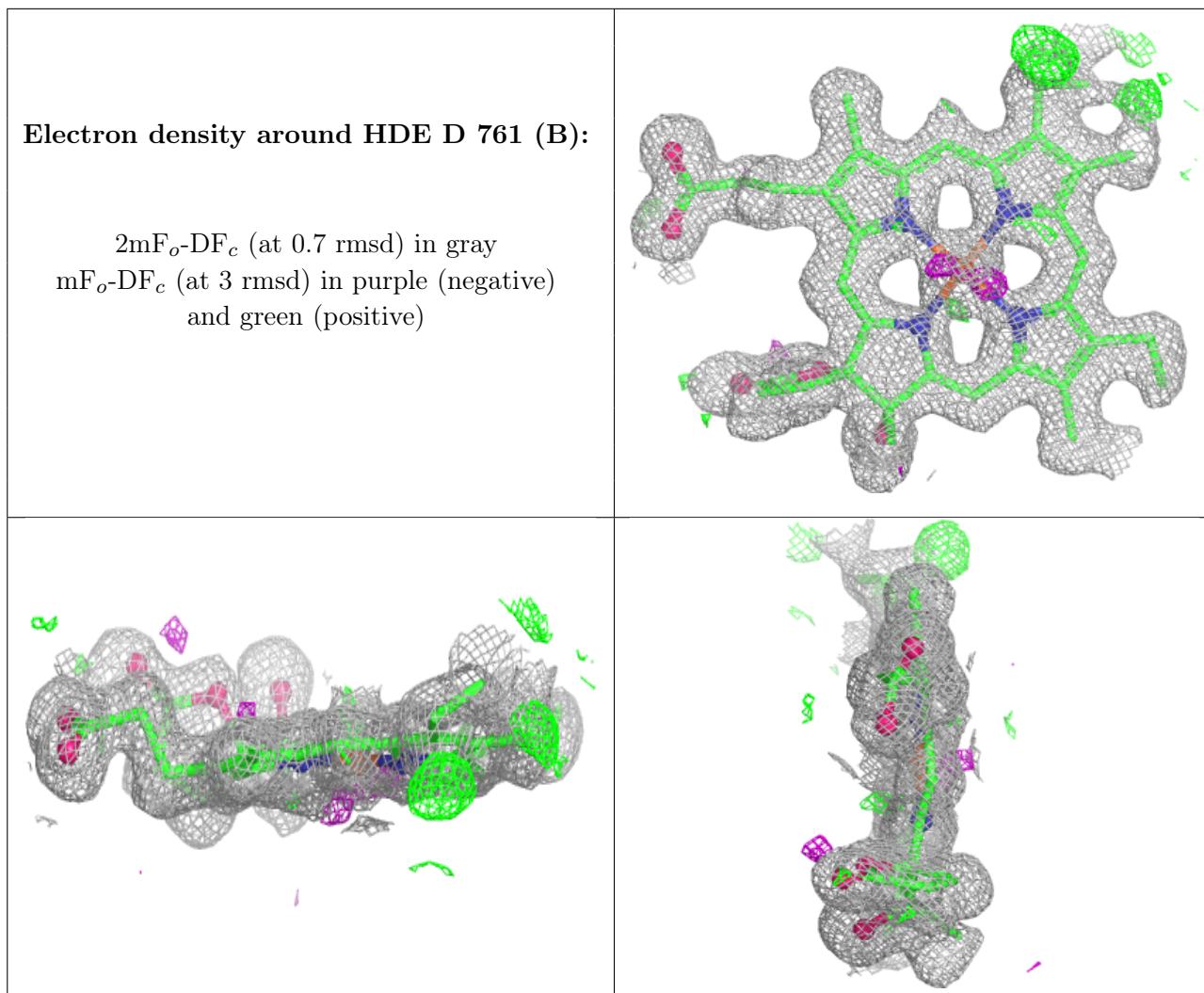
$2mF_o-DF_c$ (at 0.7 rmsd) in gray
 mF_o-DF_c (at 3 rmsd) in purple (negative)
and green (positive)



Electron density around HDE C 761 (B):

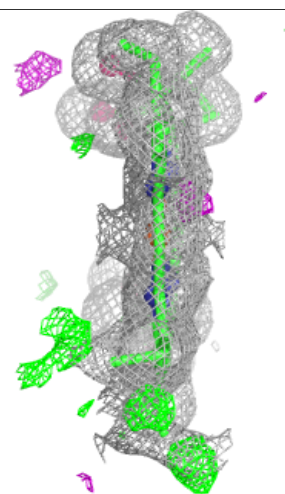
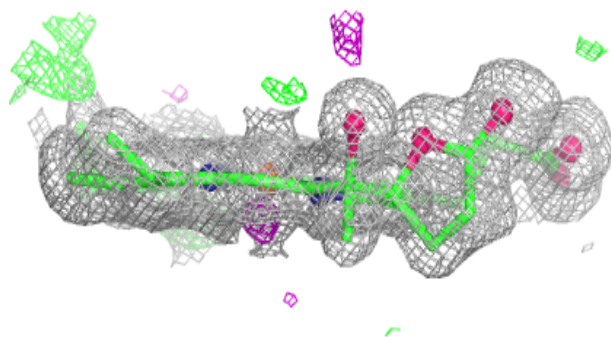
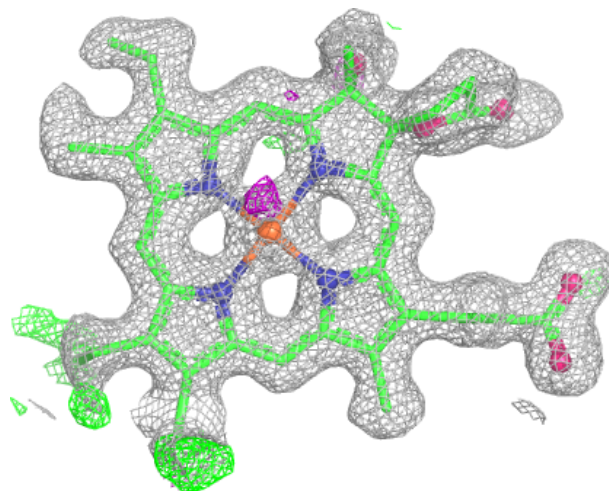
$2mF_o-DF_c$ (at 0.7 rmsd) in gray
 mF_o-DF_c (at 3 rmsd) in purple (negative)
and green (positive)





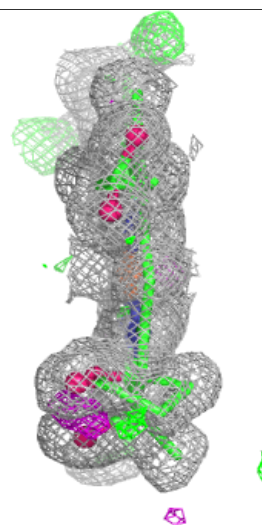
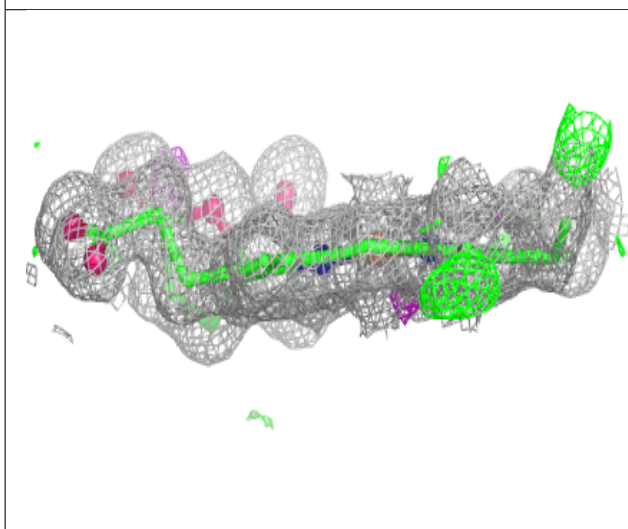
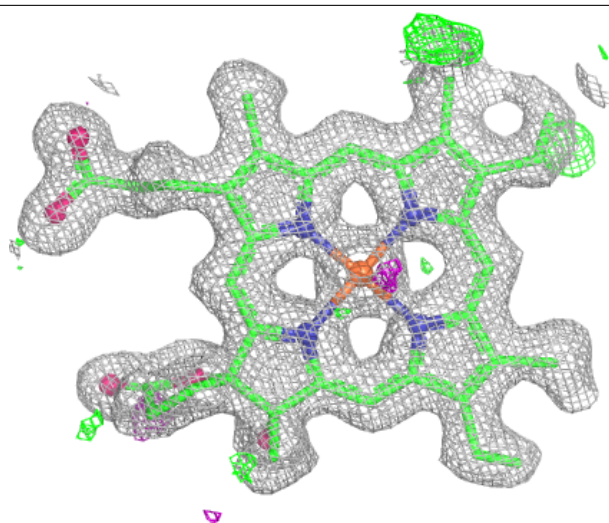
Electron density around HDD A 760 (A):

$2mF_o-DF_c$ (at 0.7 rmsd) in gray
 mF_o-DF_c (at 3 rmsd) in purple (negative)
and green (positive)



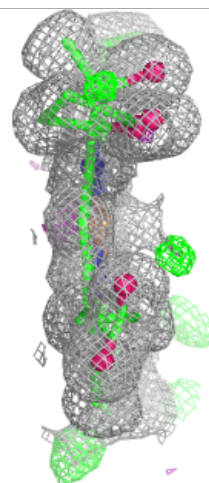
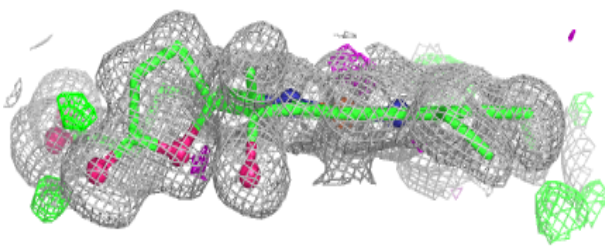
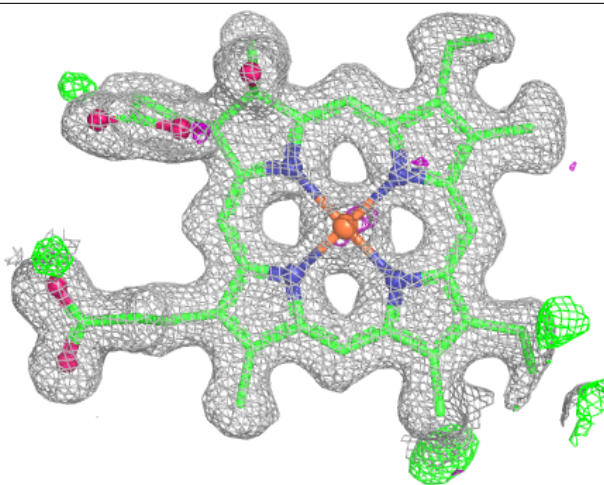
Electron density around HDD B 760 (A):

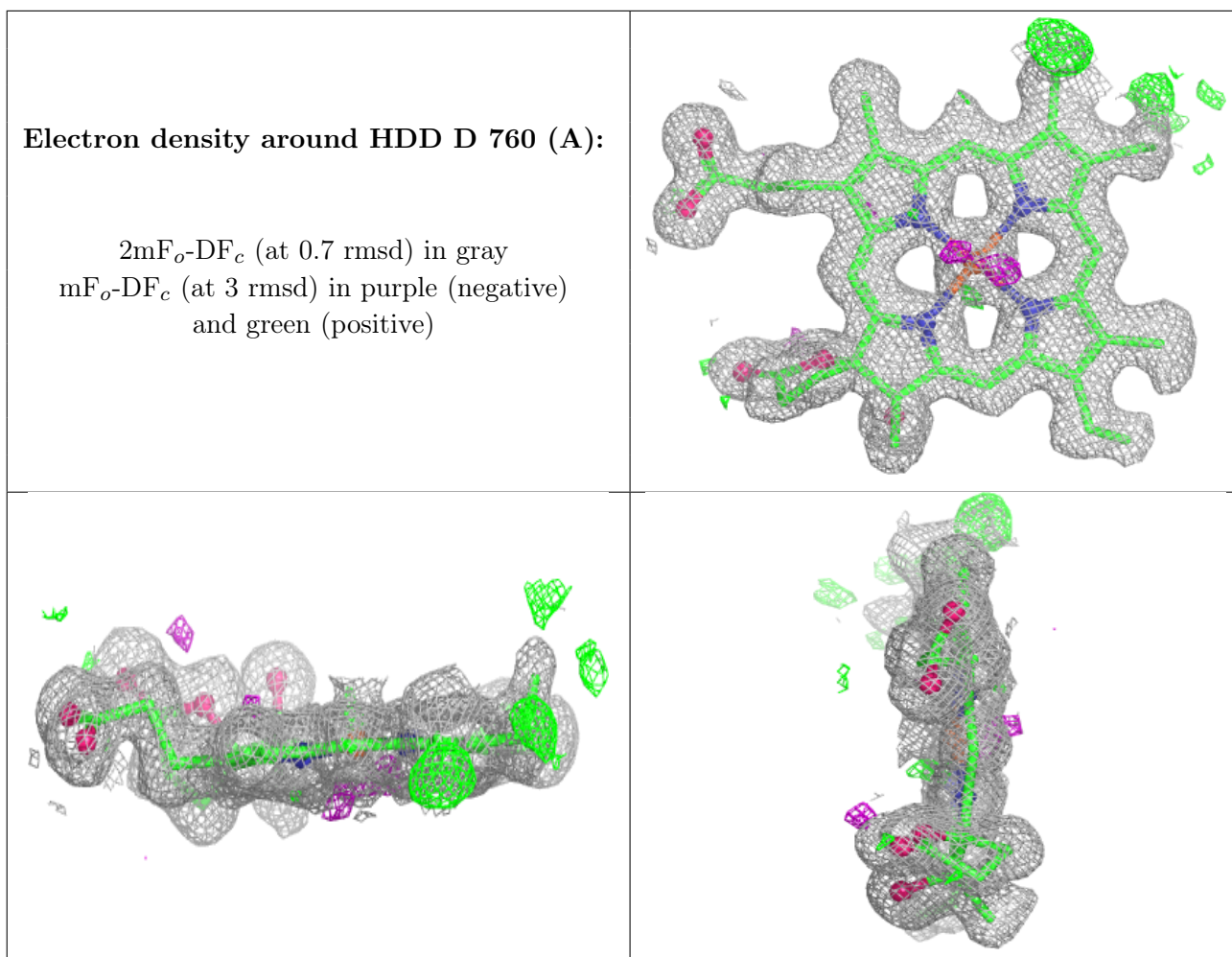
$2mF_o-DF_c$ (at 0.7 rmsd) in gray
 mF_o-DF_c (at 3 rmsd) in purple (negative)
and green (positive)



Electron density around HDD C 760 (A):

$2mF_o-DF_c$ (at 0.7 rmsd) in gray
 mF_o-DF_c (at 3 rmsd) in purple (negative)
and green (positive)





6.5 Other polymers [i](#)

There are no such residues in this entry.