



# Full wwPDB X-ray Structure Validation Report ⓘ

Aug 30, 2023 – 02:05 AM EDT

PDB ID : 3P9T  
Title : SmeT-Triclosan complex  
Authors : Hernandez, A.; Ruiz, F.M.; Romero, A.; Martinez, J.L.  
Deposited on : 2010-10-18  
Resolution : 2.02 Å(reported)

This is a Full wwPDB X-ray Structure Validation Report for a publicly released PDB entry.

We welcome your comments at [validation@mail.wwpdb.org](mailto:validation@mail.wwpdb.org)

A user guide is available at

<https://www.wwpdb.org/validation/2017/XrayValidationReportHelp>

with specific help available everywhere you see the ⓘ symbol.

The types of validation reports are described at

<http://www.wwpdb.org/validation/2017/FAQs#types>.

---

The following versions of software and data (see [references ⓘ](#)) were used in the production of this report:

MolProbity : 4.02b-467  
Mogul : 1.8.5 (274361), CSD as541be (2020)  
Xtriage (Phenix) : 1.13  
EDS : 2.35  
buster-report : 1.1.7 (2018)  
Percentile statistics : 20191225.v01 (using entries in the PDB archive December 25th 2019)  
Refmac : 5.8.0158  
CCP4 : 7.0.044 (Gargrove)  
Ideal geometry (proteins) : Engh & Huber (2001)  
Ideal geometry (DNA, RNA) : Parkinson et al. (1996)  
Validation Pipeline (wwPDB-VP) : 2.35

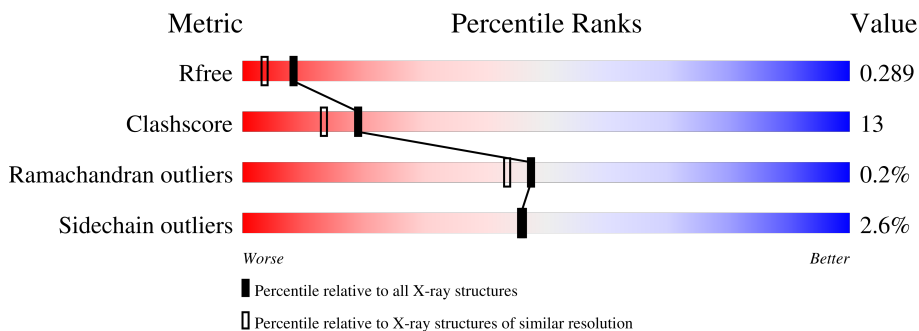
# 1 Overall quality at a glance

The following experimental techniques were used to determine the structure:

*X-RAY DIFFRACTION*

The reported resolution of this entry is 2.02 Å.

Percentile scores (ranging between 0-100) for global validation metrics of the entry are shown in the following graphic. The table shows the number of entries on which the scores are based.



Metric	Whole archive (#Entries)	Similar resolution (#Entries, resolution range(Å))
$R_{free}$	130704	10434 (2.04-2.00)
Clashscore	141614	11643 (2.04-2.00)
Ramachandran outliers	138981	11493 (2.04-2.00)
Sidechain outliers	138945	11492 (2.04-2.00)

The table below summarises the geometric issues observed across the polymeric chains and their fit to the electron density. The red, orange, yellow and green segments of the lower bar indicate the fraction of residues that contain outliers for  $\geq 3$ , 2, 1 and 0 types of geometric quality criteria respectively. A grey segment represents the fraction of residues that are not modelled. The numeric value for each fraction is indicated below the corresponding segment, with a dot representing fractions  $\leq 5\%$ .

Mol	Chain	Length	Quality of chain
1	A	219	77% (green), 18% (yellow), 5% (orange), 0% (red), 0% (grey)
1	B	219	72% (green), 21% (yellow), 5% (orange), 0% (red), 0% (grey)

The following table lists non-polymeric compounds, carbohydrate monomers and non-standard residues in protein, DNA, RNA chains that are outliers for geometric or electron-density-fit criteria:

Mol	Type	Chain	Res	Chirality	Geometry	Clashes	Electron density
3	TCL	A	221	-	-	X	-
3	TCL	A	222	-	-	X	-

## 2 Entry composition [i](#)

There are 4 unique types of molecules in this entry. The entry contains 3625 atoms, of which 0 are hydrogens and 0 are deuteriums.

In the tables below, the ZeroOcc column contains the number of atoms modelled with zero occupancy, the AltConf column contains the number of residues with at least one atom in alternate conformation and the Trace column contains the number of residues modelled with at most 2 atoms.

- Molecule 1 is a protein called Repressor.

Mol	Chain	Residues	Atoms					ZeroOcc	AltConf	Trace
			Total	C	N	O	S			
1	A	213	1693	1053	309	317	14	0	4	0
1	B	209	1663	1036	307	304	16	0	4	0

There are 2 discrepancies between the modelled and reference sequences:

Chain	Residue	Modelled	Actual	Comment	Reference
A	166	LEU	GLN	engineered mutation	UNP Q8KLP4
B	166	LEU	GLN	engineered mutation	UNP Q8KLP4

- Molecule 2 is SULFATE ION (three-letter code: SO4) (formula: O<sub>4</sub>S).



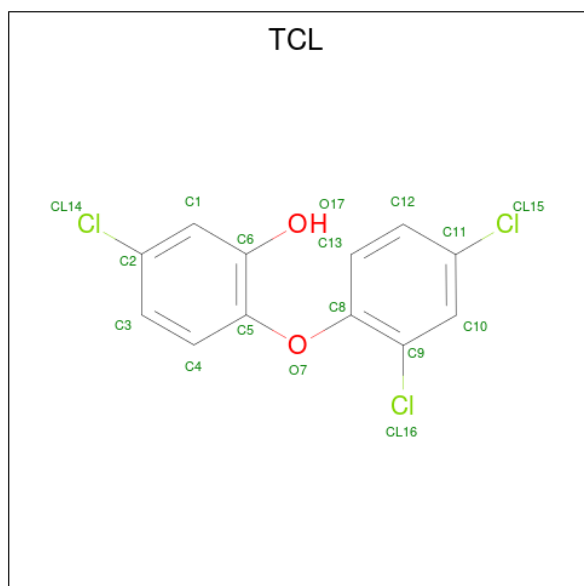
Mol	Chain	Residues	Atoms			ZeroOcc	AltConf
			Total	O	S		
2	A	1	5	4	1	0	0

*Continued on next page...*

Continued from previous page...

Mol	Chain	Residues	Atoms			ZeroOcc	AltConf
2	B	1	Total	O	S	0	0
			5	4	1		

- Molecule 3 is TRICLOSAN (three-letter code: TCL) (formula:  $C_{12}H_7Cl_3O_2$ ).



Mol	Chain	Residues	Atoms				ZeroOcc	AltConf
3	A	1	Total	C	Cl	O	0	0
			17	12	3	2		
3	A	1	Total	C	Cl	O	0	0
			17	12	3	2		


- Molecule 4 is water.

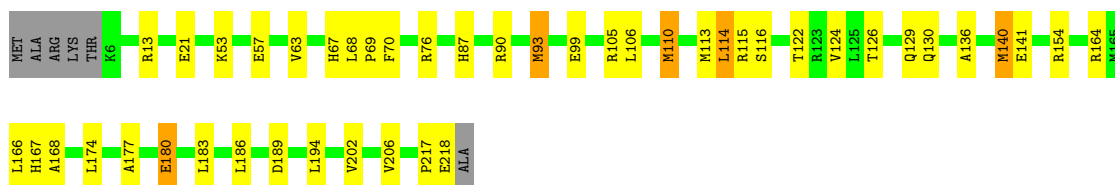
Mol	Chain	Residues	Atoms		ZeroOcc	AltConf
4	A	122	Total	O	0	0
			122	122		
4	B	103	Total	O	0	0
			103	103		

### 3 Residue-property plots

These plots are drawn for all protein, RNA, DNA and oligosaccharide chains in the entry. The first graphic for a chain summarises the proportions of the various outlier classes displayed in the second graphic. The second graphic shows the sequence view annotated by issues in geometry. Residues are color-coded according to the number of geometric quality criteria for which they contain at least one outlier: green = 0, yellow = 1, orange = 2 and red = 3 or more. Stretches of 2 or more consecutive residues without any outlier are shown as a green connector. Residues present in the sample, but not in the model, are shown in grey.

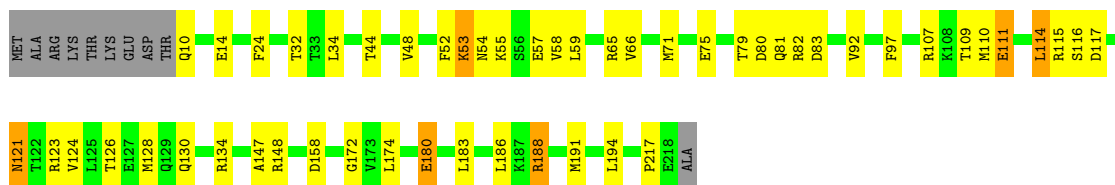
- Molecule 1: Repressor

Chain A: 



- Molecule 1: Repressor

Chain B: 



## 4 Data and refinement statistics

Property	Value	Source
Space group	P 1 21 1	Depositor
Cell constants a, b, c, $\alpha$ , $\beta$ , $\gamma$	56.22Å 59.31Å 84.58Å 90.00° 102.94° 90.00°	Depositor
Resolution (Å)	82.44 – 2.02 48.14 – 2.02	Depositor EDS
% Data completeness (in resolution range)	99.9 (82.44-2.02) 99.9 (48.14-2.02)	Depositor EDS
$R_{merge}$	0.09	Depositor
$R_{sym}$	0.05	Depositor
$\langle I/\sigma(I) \rangle$ <sup>1</sup>	2.38 (at 2.01Å)	Xtrriage
Refinement program	REFMAC 5.5.0072	Depositor
R, $R_{free}$	0.205 , 0.251 0.252 , 0.289	Depositor DCC
$R_{free}$ test set	1792 reflections (5.01%)	wwPDB-VP
Wilson B-factor (Å <sup>2</sup> )	24.3	Xtrriage
Anisotropy	0.796	Xtrriage
Bulk solvent $k_{sol}$ (e/Å <sup>3</sup> ), $B_{sol}$ (Å <sup>2</sup> )	0.30 , 28.5	EDS
L-test for twinning <sup>2</sup>	$\langle  L  \rangle = 0.49$ , $\langle L^2 \rangle = 0.32$	Xtrriage
Estimated twinning fraction	No twinning to report.	Xtrriage
$F_o, F_c$ correlation	0.92	EDS
Total number of atoms	3625	wwPDB-VP
Average B, all atoms (Å <sup>2</sup> )	33.0	wwPDB-VP

Xtrriage's analysis on translational NCS is as follows: *The largest off-origin peak in the Patterson function is 6.70% of the height of the origin peak. No significant pseudotranslation is detected.*

<sup>1</sup>Intensities estimated from amplitudes.

<sup>2</sup>Theoretical values of  $\langle |L| \rangle$ ,  $\langle L^2 \rangle$  for acentric reflections are 0.5, 0.333 respectively for untwinned datasets, and 0.375, 0.2 for perfectly twinned datasets.

## 5 Model quality [i](#)

### 5.1 Standard geometry [i](#)

Bond lengths and bond angles in the following residue types are not validated in this section: TCL, SO4

The Z score for a bond length (or angle) is the number of standard deviations the observed value is removed from the expected value. A bond length (or angle) with  $|Z| > 5$  is considered an outlier worth inspection. RMSZ is the root-mean-square of all Z scores of the bond lengths (or angles).

Mol	Chain	Bond lengths		Bond angles	
		RMSZ	# Z  >5	RMSZ	# Z  >5
1	A	1.07	1/1728 (0.1%)	0.99	9/2331 (0.4%)
1	B	0.99	2/1698 (0.1%)	0.93	5/2287 (0.2%)
All	All	1.03	3/3426 (0.1%)	0.96	14/4618 (0.3%)

All (3) bond length outliers are listed below:

Mol	Chain	Res	Type	Atoms	Z	Observed(Å)	Ideal(Å)
1	B	147	ALA	CA-CB	6.24	1.65	1.52
1	B	92	VAL	CB-CG2	5.48	1.64	1.52
1	A	202	VAL	CB-CG1	5.45	1.64	1.52

All (14) bond angle outliers are listed below:

Mol	Chain	Res	Type	Atoms	Z	Observed(°)	Ideal(°)
1	A	140	MET	CG-SD-CE	-8.96	85.86	100.20
1	A	154	ARG	NE-CZ-NH2	-8.02	116.29	120.30
1	B	191	MET	CG-SD-CE	7.46	112.14	100.20
1	B	188	ARG	NE-CZ-NH2	-6.60	117.00	120.30
1	B	82	ARG	NE-CZ-NH1	-6.12	117.24	120.30
1	A	154	ARG	CG-CD-NE	-6.07	99.06	111.80
1	A	13	ARG	NE-CZ-NH1	-5.86	117.37	120.30
1	B	82	ARG	NE-CZ-NH2	5.81	123.20	120.30
1	A	93	MET	CG-SD-CE	-5.74	91.02	100.20
1	A	90	ARG	NE-CZ-NH1	5.51	123.06	120.30
1	A	154	ARG	NE-CZ-NH1	5.20	122.90	120.30
1	B	158	ASP	CB-CG-OD1	5.11	122.90	118.30
1	A	164	ARG	NE-CZ-NH2	-5.04	117.78	120.30
1	A	189	ASP	CB-CG-OD2	5.03	122.83	118.30

There are no chirality outliers.

There are no planarity outliers.

## 5.2 Too-close contacts

In the following table, the Non-H and H(model) columns list the number of non-hydrogen atoms and hydrogen atoms in the chain respectively. The H(added) column lists the number of hydrogen atoms added and optimized by MolProbity. The Clashes column lists the number of clashes within the asymmetric unit, whereas Symm-Clashes lists symmetry-related clashes.

Mol	Chain	Non-H	H(model)	H(added)	Clashes	Symm-Clashes
1	A	1693	0	1699	49	0
1	B	1663	0	1681	44	1
2	A	5	0	0	0	0
2	B	5	0	0	0	0
3	A	34	0	13	19	0
4	A	122	0	0	1	0
4	B	103	0	0	1	0
All	All	3625	0	3393	88	1

The all-atom clashscore is defined as the number of clashes found per 1000 atoms (including hydrogen atoms). The all-atom clashscore for this structure is 13.

All (88) close contacts within the same asymmetric unit are listed below, sorted by their clash magnitude.

Atom-1	Atom-2	Interatomic distance (Å)	Clash overlap (Å)
1:B:110[B]:MET:CE	1:B:174:LEU:HD13	1.88	1.03
1:A:76:ARG:NH2	1:A:217:PRO:O	1.92	1.00
1:B:180:GLU:HG3	1:B:183:LEU:HB2	1.45	0.96
1:B:110[B]:MET:HE1	1:B:174:LEU:HD13	1.50	0.90
1:B:66:VAL:HG21	1:B:109:THR:HG21	1.59	0.85
1:A:183:LEU:HD11	1:B:134[B]:ARG:HG3	1.56	0.84
1:B:117:ASP:OD2	1:B:126:THR:HG23	1.77	0.83
1:B:110[B]:MET:HE3	1:B:174:LEU:HD13	1.58	0.83
1:B:130:GLN:O	1:B:134[A]:ARG:HG3	1.81	0.80
1:B:34:LEU:HD11	1:B:54:ASN:HA	1.65	0.79
1:A:114:LEU:CD2	3:A:221:TCL:CL15	2.69	0.76
1:B:123:ARG:O	1:B:126:THR:N	2.19	0.74
1:A:114:LEU:HD23	3:A:221:TCL:CL15	2.26	0.73
1:A:140:MET:CE	1:A:166:LEU:HD23	2.20	0.71
1:A:110[B]:MET:HE1	3:A:222:TCL:C12	2.20	0.71
1:A:167:HIS:ND1	3:A:221:TCL:O17	2.20	0.70
1:A:87:HIS:CE1	1:A:206:VAL:O	2.45	0.69

*Continued on next page...*



*Continued from previous page...*

Atom-1	Atom-2	Interatomic distance (Å)	Clash overlap (Å)
1:A:122:THR:OG1	1:A:124:VAL:HG23	1.92	0.69
1:A:68:LEU:HB3	1:A:69:PRO:HD3	1.75	0.69
1:A:166:LEU:HD11	1:A:194:LEU:HD12	1.76	0.67
1:B:124:VAL:O	1:B:128:MET:HE2	1.96	0.66
1:A:114:LEU:HD21	3:A:221:TCL:CL15	2.32	0.65
1:A:67:HIS:HD1	3:A:222:TCL:C6	2.11	0.63
1:A:140:MET:HE2	1:A:166:LEU:HD23	1.81	0.62
1:B:80:ASP:OD1	1:B:81:GLN:NE2	2.28	0.62
1:B:10:GLN:O	1:B:14:GLU:HG2	2.00	0.61
1:B:34:LEU:HD11	1:B:54:ASN:CA	2.30	0.61
1:B:124:VAL:O	1:B:128:MET:CE	2.48	0.61
1:A:110[B]:MET:CE	3:A:222:TCL:C12	2.79	0.61
1:A:67:HIS:ND1	3:A:222:TCL:H11	2.18	0.58
1:A:67:HIS:HD1	3:A:222:TCL:C1	2.18	0.56
1:A:93:MET:HE1	3:A:221:TCL:H31	1.88	0.56
1:B:110[A]:MET:CE	1:B:114:LEU:HD13	2.36	0.56
1:B:66:VAL:HG21	1:B:109:THR:CG2	2.35	0.55
1:B:97:PHE:CE2	1:B:194:LEU:HD11	2.41	0.55
1:B:66:VAL:CG2	1:B:109:THR:HG21	2.35	0.54
1:A:67:HIS:ND1	3:A:222:TCL:O17	2.32	0.54
1:A:177:ALA:CB	1:A:186:LEU:HD13	2.38	0.53
1:A:113:MET:CG	3:A:222:TCL:H31	2.39	0.53
1:A:174:LEU:HD23	1:A:186:LEU:HD11	1.90	0.53
1:B:121:ASN:OD1	1:B:121:ASN:N	2.41	0.52
1:B:110[A]:MET:HE3	1:B:114:LEU:HD13	1.92	0.52
1:A:167:HIS:HA	3:A:221:TCL:H11	1.93	0.51
1:A:140:MET:CE	1:A:166:LEU:CD2	2.89	0.51
1:B:111:GLU:O	1:B:115:ARG:HG3	2.10	0.50
1:A:183:LEU:HD11	1:B:134[A]:ARG:HG2	1.92	0.50
1:A:67:HIS:HD1	3:A:222:TCL:H11	1.77	0.50
1:A:177:ALA:HB3	1:A:186:LEU:HD13	1.94	0.50
1:A:217:PRO:O	1:A:218:GLU:CB	2.60	0.50
1:A:113:MET:HG3	3:A:222:TCL:H31	1.93	0.49
1:B:71:MET:O	1:B:75:GLU:HB2	2.12	0.49
1:B:180:GLU:HG3	1:B:183:LEU:CB	2.29	0.49
1:A:140:MET:HE1	1:A:166:LEU:CD2	2.42	0.49
1:A:87:HIS:HE1	1:A:206:VAL:O	1.95	0.48
1:A:110[B]:MET:HE2	3:A:222:TCL:C13	2.44	0.48
1:A:141:GLU:OE1	4:A:252:HOH:O	2.20	0.48
1:A:140:MET:HE1	1:A:166:LEU:HD23	1.95	0.47
1:B:110[A]:MET:HE2	1:B:114:LEU:CD1	2.44	0.47

*Continued on next page...*

Continued from previous page...

Atom-1	Atom-2	Interatomic distance (Å)	Clash overlap (Å)
1:B:110[B]:MET:HE3	1:B:174:LEU:CD1	2.37	0.46
1:A:99:GLU:HG2	1:A:106:LEU:CD2	2.46	0.46
1:B:52:PHE:CG	1:B:58:VAL:HG22	2.51	0.46
1:B:65:ARG:HB3	4:B:321:HOH:O	2.16	0.46
1:B:44:THR:O	1:B:48:VAL:HG23	2.16	0.45
1:A:67:HIS:ND1	3:A:222:TCL:C1	2.77	0.45
1:B:32:THR:O	1:B:55:LYS:HE2	2.16	0.45
1:A:115:ARG:HG2	1:B:116:SER:CB	2.46	0.45
1:A:63:VAL:HG21	1:A:113:MET:SD	2.57	0.45
1:B:24:PHE:CE2	1:B:59:LEU:HG	2.53	0.44
1:A:126:THR:O	1:A:130:GLN:HG3	2.18	0.44
1:A:136:ALA:O	1:A:140:MET:HG3	2.18	0.43
1:B:53:LYS:HE3	1:B:57:GLU:OE2	2.18	0.43
1:B:107:ARG:O	1:B:111:GLU:CG	2.66	0.43
1:A:110[B]:MET:CE	3:A:222:TCL:C13	2.97	0.42
1:A:53:LYS:HE3	1:A:57:GLU:OE2	2.19	0.42
1:A:110[A]:MET:HE2	1:A:110[A]:MET:HB3	1.95	0.42
1:A:115:ARG:HG2	1:B:116:SER:OG	2.19	0.42
1:A:168:ALA:O	1:B:172:GLY:HA3	2.19	0.42
1:A:70:PHE:HE2	3:A:221:TCL:H41	1.85	0.42
1:B:110[A]:MET:CE	1:B:114:LEU:CD1	2.97	0.42
1:B:110[A]:MET:HE2	1:B:114:LEU:HD13	2.02	0.42
1:B:186:LEU:HD23	1:B:186:LEU:HA	1.78	0.41
1:B:110[A]:MET:O	1:B:110[A]:MET:HG3	2.20	0.41
1:A:21:GLU:OE2	1:A:105:ARG:NH1	2.53	0.41
1:A:180:GLU:HG3	1:A:183:LEU:HG	2.03	0.41
1:B:79:THR:C	1:B:81:GLN:H	2.23	0.41
1:B:107:ARG:O	1:B:111:GLU:HG2	2.20	0.41
1:B:124:VAL:O	1:B:128:MET:HE3	2.21	0.40
1:A:116:SER:OG	1:A:129:GLN:NE2	2.55	0.40

All (1) symmetry-related close contacts are listed below. The label for Atom-2 includes the symmetry operator and encoded unit-cell translations to be applied.

Atom-1	Atom-2	Interatomic distance (Å)	Clash overlap (Å)
1:B:83:ASP:OD1	1:B:188:ARG:NH2[2_455]	2.15	0.05

## 5.3 Torsion angles [i](#)

### 5.3.1 Protein backbone [i](#)

In the following table, the Percentiles column shows the percent Ramachandran outliers of the chain as a percentile score with respect to all X-ray entries followed by that with respect to entries of similar resolution.

The Analysed column shows the number of residues for which the backbone conformation was analysed, and the total number of residues.

Mol	Chain	Analysed	Favoured	Allowed	Outliers	Percentiles	
1	A	215/219 (98%)	213 (99%)	2 (1%)	0	100	100
1	B	211/219 (96%)	208 (99%)	2 (1%)	1 (0%)	29	22
All	All	426/438 (97%)	421 (99%)	4 (1%)	1 (0%)	47	43

All (1) Ramachandran outliers are listed below:

Mol	Chain	Res	Type
1	B	217	PRO

### 5.3.2 Protein sidechains [i](#)

In the following table, the Percentiles column shows the percent sidechain outliers of the chain as a percentile score with respect to all X-ray entries followed by that with respect to entries of similar resolution.

The Analysed column shows the number of residues for which the sidechain conformation was analysed, and the total number of residues.

Mol	Chain	Analysed	Rotameric	Outliers	Percentiles	
1	A	178/179 (99%)	174 (98%)	4 (2%)	52	53
1	B	174/179 (97%)	168 (97%)	6 (3%)	37	35
All	All	352/358 (98%)	342 (97%)	10 (3%)	46	43

All (10) residues with a non-rotameric sidechain are listed below:

Mol	Chain	Res	Type
1	A	110[A]	MET
1	A	110[B]	MET
1	A	114	LEU
1	A	180	GLU
1	B	53	LYS

*Continued on next page...*

*Continued from previous page...*

Mol	Chain	Res	Type
1	B	111	GLU
1	B	114	LEU
1	B	121	ASN
1	B	148	ARG
1	B	180	GLU

Sometimes sidechains can be flipped to improve hydrogen bonding and reduce clashes. All (2) such sidechains are listed below:

Mol	Chain	Res	Type
1	A	129	GLN
1	B	25	HIS

### 5.3.3 RNA [i](#)

There are no RNA molecules in this entry.

## 5.4 Non-standard residues in protein, DNA, RNA chains [i](#)

There are no non-standard protein/DNA/RNA residues in this entry.

## 5.5 Carbohydrates [i](#)

There are no monosaccharides in this entry.

## 5.6 Ligand geometry [i](#)

4 ligands are modelled in this entry.

In the following table, the Counts columns list the number of bonds (or angles) for which Mogul statistics could be retrieved, the number of bonds (or angles) that are observed in the model and the number of bonds (or angles) that are defined in the Chemical Component Dictionary. The Link column lists molecule types, if any, to which the group is linked. The Z score for a bond length (or angle) is the number of standard deviations the observed value is removed from the expected value. A bond length (or angle) with  $|Z| > 2$  is considered an outlier worth inspection. RMSZ is the root-mean-square of all Z scores of the bond lengths (or angles).

Mol	Type	Chain	Res	Link	Bond lengths			Bond angles		
					Counts	RMSZ	# $ Z  > 2$	Counts	RMSZ	# $ Z  > 2$
3	TCL	A	221	-	18,18,18	1.97	3 (16%)	25,25,25	1.71	6 (24%)

Mol	Type	Chain	Res	Link	Bond lengths			Bond angles		
					Counts	RMSZ	# Z  > 2	Counts	RMSZ	# Z  > 2
2	SO4	B	220	-	4,4,4	0.28	0	6,6,6	0.70	0
2	SO4	A	220	-	4,4,4	0.45	0	6,6,6	0.62	0
3	TCL	A	222	-	18,18,18	2.45	7 (38%)	25,25,25	2.04	9 (36%)

In the following table, the Chirals column lists the number of chiral outliers, the number of chiral centers analysed, the number of these observed in the model and the number defined in the Chemical Component Dictionary. Similar counts are reported in the Torsion and Rings columns. '-' means no outliers of that kind were identified.

Mol	Type	Chain	Res	Link	Chirals	Torsions	Rings
3	TCL	A	221	-	-	0/4/4/4	0/2/2/2
3	TCL	A	222	-	-	0/4/4/4	0/2/2/2

All (10) bond length outliers are listed below:

Mol	Chain	Res	Type	Atoms	Z	Observed(Å)	Ideal(Å)
3	A	222	TCL	C8-C9	5.43	1.49	1.39
3	A	221	TCL	C6-C5	5.15	1.49	1.40
3	A	221	TCL	C8-C9	4.51	1.47	1.39
3	A	222	TCL	C6-C5	4.32	1.48	1.40
3	A	222	TCL	C2-CL14	3.60	1.82	1.74
3	A	222	TCL	C11-CL15	3.13	1.81	1.74
3	A	222	TCL	C9-CL16	3.10	1.81	1.73
3	A	222	TCL	C10-C11	3.09	1.43	1.38
3	A	222	TCL	C10-C9	2.28	1.42	1.38
3	A	221	TCL	C9-CL16	2.03	1.78	1.73

All (15) bond angle outliers are listed below:

Mol	Chain	Res	Type	Atoms	Z	Observed(°)	Ideal(°)
3	A	222	TCL	C10-C11-CL15	4.23	124.44	119.15
3	A	221	TCL	O7-C5-C6	4.06	123.80	116.22
3	A	222	TCL	C3-C2-CL14	3.87	125.40	119.35
3	A	221	TCL	C10-C9-CL16	3.52	124.16	118.49
3	A	222	TCL	C10-C9-CL16	3.47	124.09	118.49
3	A	221	TCL	C8-C9-CL16	-3.15	115.72	119.43
3	A	222	TCL	C8-C9-CL16	-2.98	115.93	119.43
3	A	222	TCL	C1-C2-CL14	-2.68	115.80	119.15
3	A	222	TCL	C4-C3-C2	2.54	121.92	119.24
3	A	222	TCL	C9-C10-C11	2.21	121.18	118.71
3	A	221	TCL	O17-C6-C5	2.18	125.19	120.09
3	A	222	TCL	C6-C1-C2	2.06	121.45	118.98

*Continued on next page...*

*Continued from previous page...*

Mol	Chain	Res	Type	Atoms	Z	Observed(°)	Ideal(°)
3	A	222	TCL	C3-C2-C1	-2.05	118.81	121.53
3	A	221	TCL	C4-C3-C2	2.05	121.40	119.24
3	A	221	TCL	O7-C8-C9	-2.02	114.81	119.58

There are no chirality outliers.

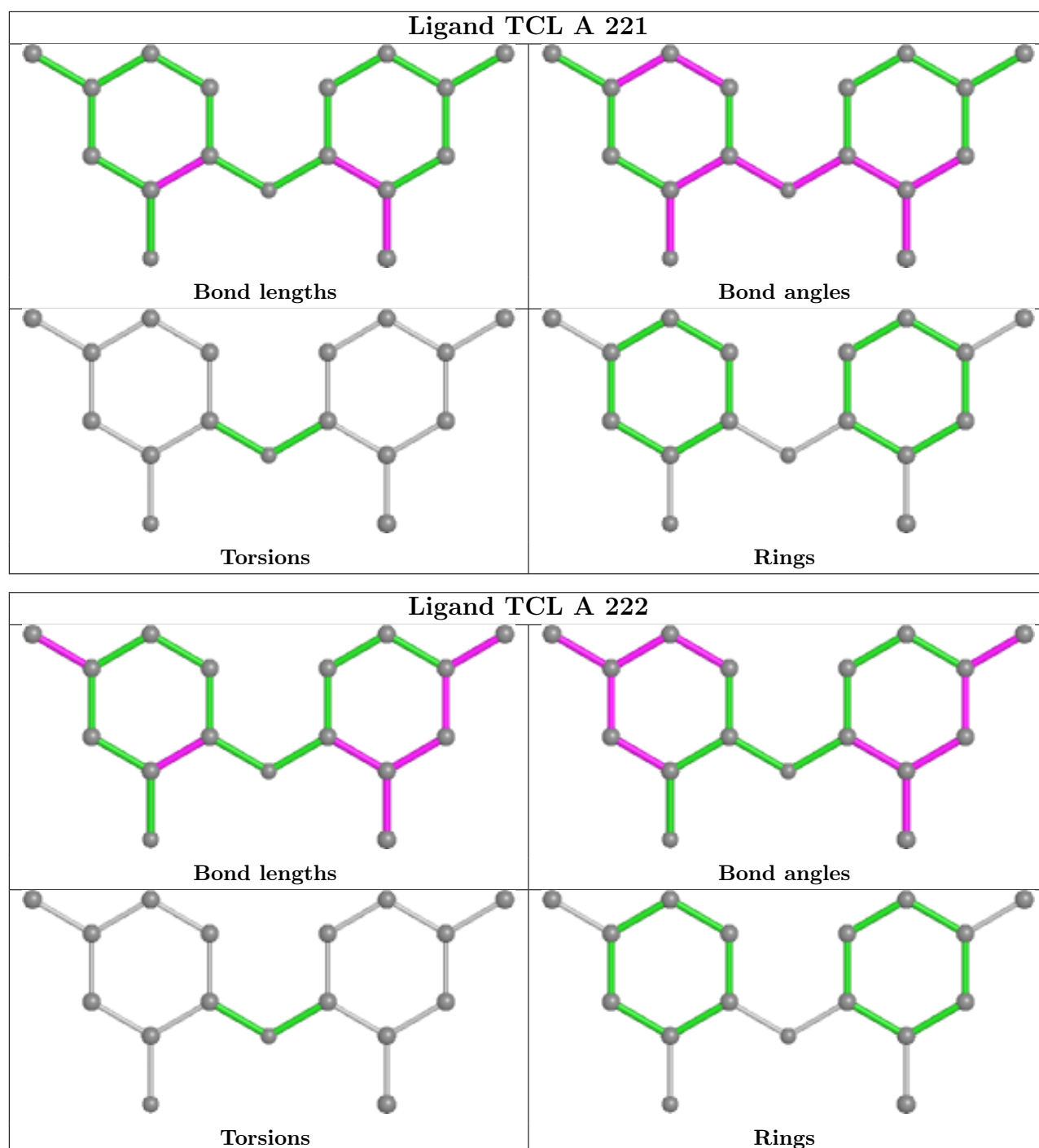
There are no torsion outliers.

There are no ring outliers.

2 monomers are involved in 19 short contacts:

Mol	Chain	Res	Type	Clashes	Symm-Clashes
3	A	221	TCL	7	0
3	A	222	TCL	12	0

The following is a two-dimensional graphical depiction of Mogul quality analysis of bond lengths, bond angles, torsion angles, and ring geometry for all instances of the Ligand of Interest. In addition, ligands with molecular weight > 250 and outliers as shown on the validation Tables will also be included. For torsion angles, if less than 5% of the Mogul distribution of torsion angles is within 10 degrees of the torsion angle in question, then that torsion angle is considered an outlier. Any bond that is central to one or more torsion angles identified as an outlier by Mogul will be highlighted in the graph. For rings, the root-mean-square deviation (RMSD) between the ring in question and similar rings identified by Mogul is calculated over all ring torsion angles. If the average RMSD is greater than 60 degrees and the minimal RMSD between the ring in question and any Mogul-identified rings is also greater than 60 degrees, then that ring is considered an outlier. The outliers are highlighted in purple. The color gray indicates Mogul did not find sufficient equivalents in the CSD to analyse the geometry.



## 5.7 Other polymers [i](#)

There are no such residues in this entry.

## 5.8 Polymer linkage issues [i](#)

There are no chain breaks in this entry.

## 6 Fit of model and data [i](#)

### 6.1 Protein, DNA and RNA chains [i](#)

Unable to reproduce the depositors R factor - this section is therefore empty.

### 6.2 Non-standard residues in protein, DNA, RNA chains [i](#)

Unable to reproduce the depositors R factor - this section is therefore empty.

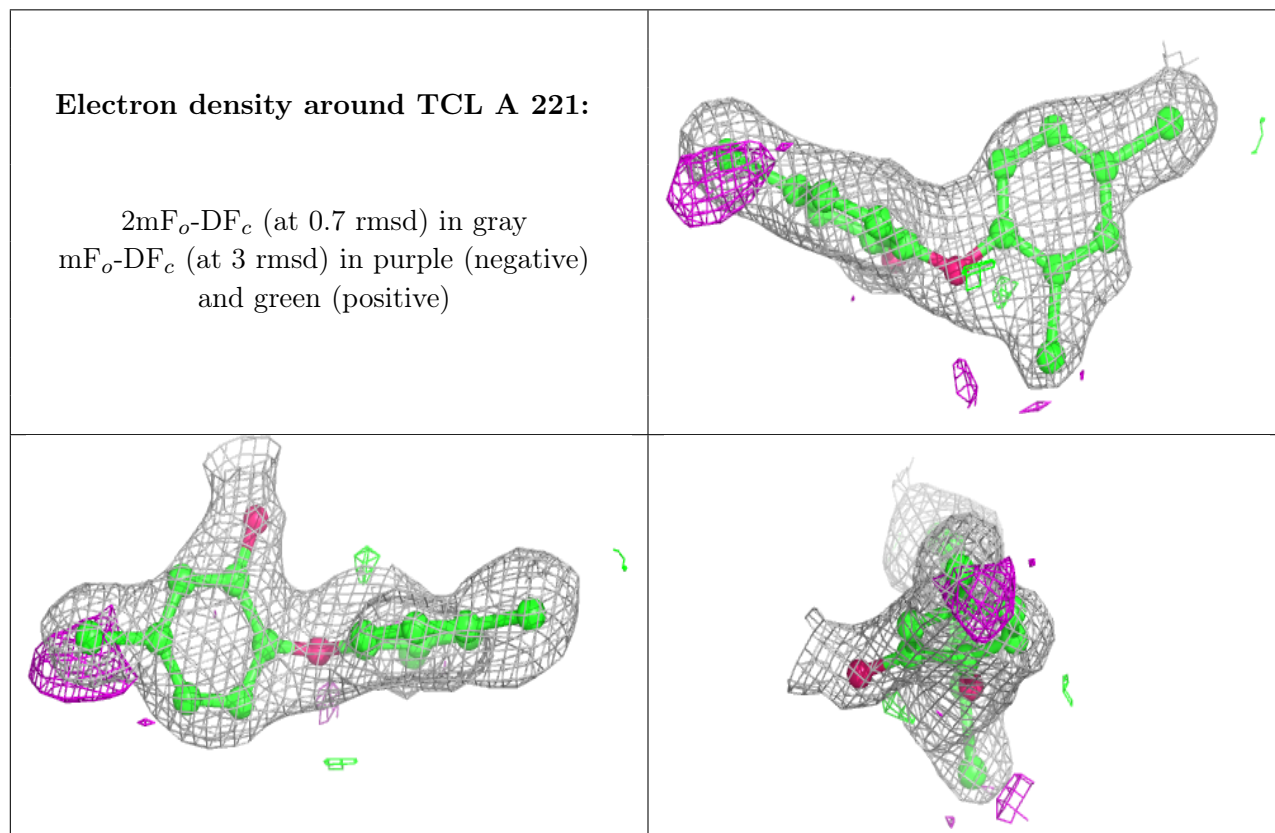
### 6.3 Carbohydrates [i](#)

Unable to reproduce the depositors R factor - this section is therefore empty.

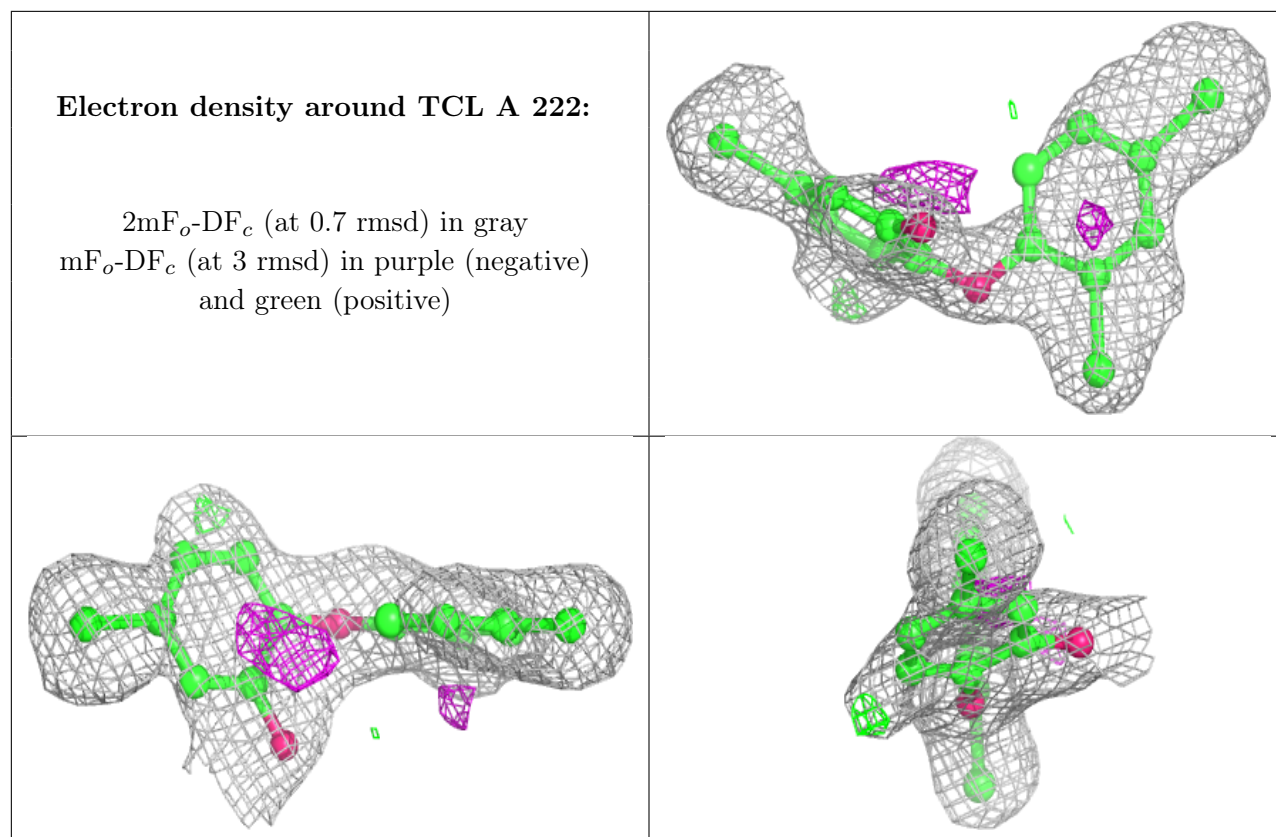
### 6.4 Ligands [i](#)

Unable to reproduce the depositors R factor - this section is therefore empty.

The following is a graphical depiction of the model fit to experimental electron density of all instances of the Ligand of Interest. In addition, ligands with molecular weight > 250 and outliers as shown on the geometry validation Tables will also be included. Each fit is shown from different orientation to approximate a three-dimensional view.







## 6.5 Other polymers [i](#)

Unable to reproduce the depositor's R factor - this section is therefore empty.