



Full wwPDB EM Validation Report ⓘ

Aug 16, 2022 – 04:15 pm BST

PDB ID : 7PEM
EMDB ID : EMD-13353
Title : Cryo-EM structure of phosphorylated Drs2p-Cdc50p in a PS and ATP-bound E2P state
Authors : Timcenko, M.; Wang, Y.; Lyons, J.A.; Nissen, P.; Lindorff-Larsen, K.
Deposited on : 2021-08-10
Resolution : 3.10 Å (reported)
Based on initial model : 6ROJ

This is a Full wwPDB EM Validation Report for a publicly released PDB entry.

We welcome your comments at validation@mail.wwpdb.org

A user guide is available at

<https://www.wwpdb.org/validation/2017/EMValidationReportHelp>

with specific help available everywhere you see the ⓘ symbol.

The types of validation reports are described at <http://www.wwpdb.org/validation/2017/FAQs#types>.

The following versions of software and data (see [references ⓘ](#)) were used in the production of this report:

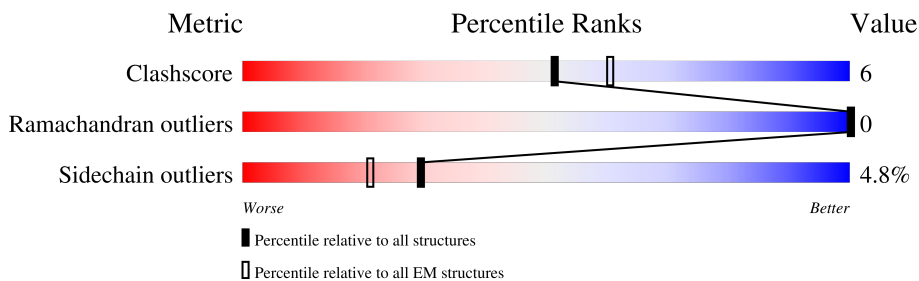
EMDB validation analysis : 0.0.1.dev8
Mogul : 1.8.4, CSD as541be (2020)
MolProbity : 4.02b-467
buster-report : 1.1.7 (2018)
Percentile statistics : 20191225.v01 (using entries in the PDB archive December 25th 2019)
Ideal geometry (proteins) : Engh & Huber (2001)
Ideal geometry (DNA, RNA) : Parkinson et al. (1996)
Validation Pipeline (wwPDB-VP) : 2.29

1 Overall quality at a glance

The following experimental techniques were used to determine the structure:
ELECTRON MICROSCOPY

The reported resolution of this entry is 3.10 Å.

Percentile scores (ranging between 0-100) for global validation metrics of the entry are shown in the following graphic. The table shows the number of entries on which the scores are based.



Metric	Whole archive (#Entries)	EM structures (#Entries)
Clashscore	158937	4297
Ramachandran outliers	154571	4023
Sidechain outliers	154315	3826

The table below summarises the geometric issues observed across the polymeric chains and their fit to the map. The red, orange, yellow and green segments of the bar indicate the fraction of residues that contain outliers for ≥ 3 , 2, 1 and 0 types of geometric quality criteria respectively. A grey segment represents the fraction of residues that are not modelled. The numeric value for each fraction is indicated below the corresponding segment, with a dot representing fractions $\leq 5\%$. The upper red bar (where present) indicates the fraction of residues that have poor fit to the EM map (all-atom inclusion $< 40\%$). The numeric value is given above the bar.

Mol	Chain	Length	Quality of chain
1	A	1355	
2	C	391	
3	B	2	
3	D	2	
4	E	4	

2 Entry composition [i](#)

There are 9 unique types of molecules in this entry. The entry contains 11620 atoms, of which 0 are hydrogens and 0 are deuteriums.

In the tables below, the AltConf column contains the number of residues with at least one atom in alternate conformation and the Trace column contains the number of residues modelled with at most 2 atoms.

- Molecule 1 is a protein called Probable phospholipid-transporting ATPase DRS2.

Mol	Chain	Residues	Atoms					AltConf	Trace	
			Total	C	N	O	P			S
1	A	1066	8522	5508	1383	1594	1	36	0	0

- Molecule 2 is a protein called Cell division control protein 50.

Mol	Chain	Residues	Atoms					AltConf	Trace
			Total	C	N	O	S		
2	C	350	2841	1839	470	520	12	0	0

- Molecule 3 is an oligosaccharide called 2-acetamido-2-deoxy-beta-D-glucopyranose-(1-4)-2-acetamido-2-deoxy-beta-D-glucopyranose.



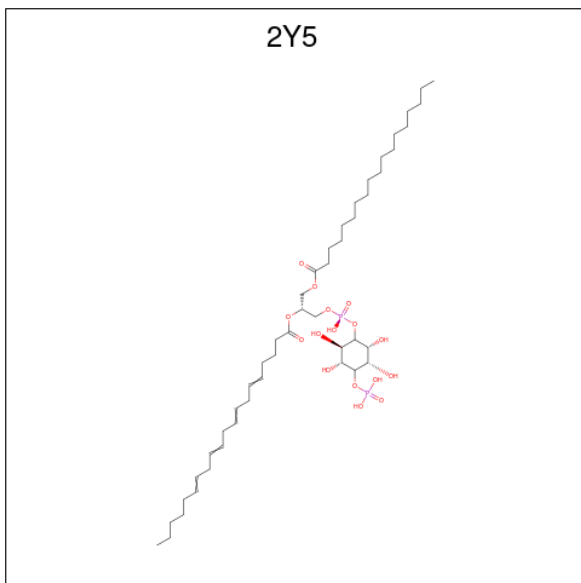
Mol	Chain	Residues	Atoms				AltConf	Trace
			Total	C	N	O		
3	B	2	28	16	2	10	0	0
3	D	2	28	16	2	10	0	0

- Molecule 4 is an oligosaccharide called beta-D-mannopyranose-(1-3)-beta-D-mannopyranose-(1-4)-2-acetamido-2-deoxy-beta-D-glucopyranose-(1-4)-2-acetamido-2-deoxy-beta-D-glucopyranose.



Mol	Chain	Residues	Atoms				AltConf	Trace
			Total	C	N	O		
4	E	4	50	28	2	20	0	0

- Molecule 5 is (2R)-1-[[[(R)-hydroxy{[(1R,2R,3R,4R,5S,6R)-2,3,5,6-tetrahydroxy-4-(phosphonoxy)cyclohexyl]oxy}phosphoryl]oxy}-3-(octadecanoyloxy)propan-2-yl (5Z,8Z,11Z,14Z)-icosa-5,8,11,14-tetraenoate (three-letter code: 2Y5) (formula: C₄₇H₈₄O₁₆P₂).



Mol	Chain	Residues	Atoms				AltConf
			Total	C	O	P	
5	A	1	65	47	16	2	0

- Molecule 6 is MAGNESIUM ION (three-letter code: MG) (formula: Mg).

Mol	Chain	Residues	Atoms		AltConf
			Total	Mg	
6	A	1	1	1	0

- Molecule 7 is ADENOSINE-5'-TRIPHOSPHATE (three-letter code: ATP) (formula: C₁₀H₁₆N₅O₁₃P₃).

Mol	Chain	Residues	Atoms		AltConf
9	A	2	Total	O	0
			2	2	

4 Experimental information

Property	Value	Source
EM reconstruction method	SINGLE PARTICLE	Depositor
Imposed symmetry	POINT, C1	Depositor
Number of particles used	91415	Depositor
Resolution determination method	FSC 0.143 CUT-OFF	Depositor
CTF correction method	NONE	Depositor
Microscope	FEI TITAN KRIOS	Depositor
Voltage (kV)	300	Depositor
Electron dose ($e^-/\text{\AA}^2$)	60	Depositor
Minimum defocus (nm)	Not provided	
Maximum defocus (nm)	Not provided	
Magnification	Not provided	
Image detector	GATAN K3 (6k x 4k)	Depositor
Maximum map value	1.242	Depositor
Minimum map value	-0.759	Depositor
Average map value	0.001	Depositor
Map value standard deviation	0.033	Depositor
Recommended contour level	0.19	Depositor
Map size (\AA)	263.9872, 263.9872, 263.9872	wwPDB
Map dimensions	256, 256, 256	wwPDB
Map angles ($^\circ$)	90.0, 90.0, 90.0	wwPDB
Pixel spacing (\AA)	1.0312, 1.0312, 1.0312	Depositor

5 Model quality

5.1 Standard geometry

Bond lengths and bond angles in the following residue types are not validated in this section: PHD, MG, ATP, NAG, 2Y5, Q3G, BMA

The Z score for a bond length (or angle) is the number of standard deviations the observed value is removed from the expected value. A bond length (or angle) with $|Z| > 5$ is considered an outlier worth inspection. RMSZ is the root-mean-square of all Z scores of the bond lengths (or angles).

Mol	Chain	Bond lengths		Bond angles	
		RMSZ	# Z >5	RMSZ	# Z >5
1	A	0.24	0/8697	0.41	0/11795
2	C	0.24	0/2918	0.41	0/3957
All	All	0.24	0/11615	0.41	0/15752

There are no bond length outliers.

There are no bond angle outliers.

There are no chirality outliers.

There are no planarity outliers.

5.2 Too-close contacts

In the following table, the Non-H and H(model) columns list the number of non-hydrogen atoms and hydrogen atoms in the chain respectively. The H(added) column lists the number of hydrogen atoms added and optimized by MolProbity. The Clashes column lists the number of clashes within the asymmetric unit, whereas Symm-Clashes lists symmetry-related clashes.

Mol	Chain	Non-H	H(model)	H(added)	Clashes	Symm-Clashes
1	A	8522	0	8531	100	0
2	C	2841	0	2832	35	0
3	B	28	0	25	1	0
3	D	28	0	25	0	0
4	E	50	0	43	2	0
5	A	65	0	81	1	0
6	A	1	0	0	0	0
7	A	31	0	12	0	0
8	A	52	0	0	0	0
9	A	2	0	0	1	0
All	All	11620	0	11549	135	0

The all-atom clashscore is defined as the number of clashes found per 1000 atoms (including hydrogen atoms). The all-atom clashscore for this structure is 6.

All (135) close contacts within the same asymmetric unit are listed below, sorted by their clash magnitude.

Atom-1	Atom-2	Interatomic distance (Å)	Clash overlap (Å)
1:A:683:GLU:HG3	1:A:684:THR:HG23	1.72	0.70
2:C:206:LEU:HB2	2:C:215:TYR:HB3	1.75	0.69
1:A:1112:THR:HB	1:A:1134:TRP:HE1	1.59	0.67
1:A:762:ARG:NH1	1:A:797:ILE:O	2.29	0.65
2:C:129:ILE:O	2:C:295:LYS:HA	1.98	0.64
1:A:245:THR:OG1	1:A:246:ASN:N	2.29	0.63
1:A:636:VAL:HG22	1:A:650:ALA:HB2	1.81	0.63
2:C:89:PHE:HB3	2:C:110:GLN:HG2	1.81	0.62
1:A:444:ILE:HD11	1:A:1012:ILE:HD13	1.81	0.62
1:A:868:ASP:OD2	1:A:871:ARG:NH1	2.32	0.61
2:C:185:LYS:NZ	2:C:239:SER:O	2.35	0.59
1:A:772:TRP:HA	1:A:775:ILE:HG22	1.85	0.58
2:C:310:LEU:HD13	4:E:2:NAG:H81	1.85	0.58
1:A:287:PHE:HB2	1:A:294:PHE:HE1	1.70	0.57
1:A:624:ASN:O	1:A:628:THR:HG23	2.04	0.57
1:A:957:ASN:ND2	9:A:1501:HOH:O	2.37	0.56
2:C:182:ARG:NH2	2:C:243:PRO:O	2.39	0.56
1:A:1158:THR:OG1	1:A:1159:LYS:N	2.38	0.56
1:A:693:LEU:HG	1:A:709:PHE:HA	1.87	0.56
2:C:188:TYR:HB3	2:C:189:PRO:HD3	1.87	0.56
2:C:257:ASP:OD1	2:C:258:GLU:N	2.39	0.55
1:A:626:PHE:HE1	1:A:759:LEU:HD13	1.72	0.55
1:A:769:TYR:HA	1:A:772:TRP:HB3	1.89	0.55
1:A:570:MET:HG3	1:A:653:PRO:HB2	1.88	0.54
1:A:863:GLU:HB3	1:A:868:ASP:HB3	1.88	0.54
1:A:670:ILE:HG22	1:A:671:ILE:HG22	1.89	0.54
1:A:780:ALA:HA	1:A:786:ARG:HH12	1.73	0.54
1:A:424:THR:HG22	1:A:426:LEU:H	1.73	0.53
1:A:761:MET:HB3	1:A:804:ILE:HD11	1.90	0.53
1:A:782:THR:OG1	1:A:784:ASP:OD1	2.26	0.53
1:A:595:GLU:HG2	1:A:599:GLU:HG2	1.89	0.53
1:A:399:GLN:N	1:A:399:GLN:OE1	2.41	0.53
1:A:246:ASN:N	1:A:246:ASN:OD1	2.42	0.53
2:C:156:SER:HA	2:C:175:SER:HB3	1.91	0.53
1:A:302:ILE:HD12	1:A:302:ILE:H	1.73	0.53
1:A:553:GLN:HB2	1:A:948:LEU:HD22	1.91	0.53
1:A:888:HIS:CG	1:A:889:ASP:H	2.27	0.53

Continued on next page...

Continued from previous page...

Atom-1	Atom-2	Interatomic distance (Å)	Clash overlap (Å)
1:A:246:ASN:HB2	1:A:249:THR:HG23	1.91	0.52
1:A:455:LEU:O	1:A:459:ILE:HG13	2.09	0.52
1:A:376:ASN:OD1	1:A:425:LYS:NZ	2.43	0.52
1:A:759:LEU:HD11	1:A:807:THR:HG23	1.92	0.52
2:C:71:GLN:HA	2:C:100:HIS:O	2.08	0.52
1:A:287:PHE:HB3	1:A:307:ILE:HB	1.91	0.52
1:A:334:ILE:HG13	1:A:346:LYS:HB2	1.91	0.51
1:A:1161:THR:HG23	1:A:1165:ILE:HD12	1.93	0.51
2:C:116:ASN:N	2:C:116:ASN:OD1	2.44	0.51
1:A:669:PHE:HZ	1:A:672:ARG:HB2	1.74	0.51
1:A:584:ASP:HB2	1:A:585:LYS:HE2	1.93	0.50
1:A:624:ASN:OD1	1:A:667:TYR:OH	2.29	0.50
1:A:622:ILE:HG22	1:A:804:ILE:HG23	1.93	0.50
1:A:253:THR:O	1:A:257:VAL:HG13	2.12	0.50
1:A:888:HIS:O	1:A:890:MET:N	2.39	0.49
1:A:498:PHE:HA	1:A:501:LEU:HB2	1.94	0.49
1:A:561:LYS:HG3	1:A:845:ILE:HG21	1.93	0.49
1:A:711:PHE:O	1:A:713:ASP:N	2.45	0.49
2:C:97:ILE:HG21	2:C:109:PRO:HG2	1.93	0.49
2:C:70:VAL:HG11	2:C:327:GLY:HA2	1.95	0.48
1:A:310:VAL:O	1:A:412:TRP:HA	2.12	0.48
1:A:536:THR:HG22	1:A:538:THR:HG23	1.96	0.48
2:C:160:LYS:HB3	2:C:167:ILE:HD11	1.94	0.48
2:C:345:LEU:O	2:C:349:ILE:HG23	2.14	0.47
1:A:531:LEU:O	1:A:540:THR:OG1	2.31	0.47
1:A:339:LEU:HD13	1:A:426:LEU:HD13	1.97	0.47
1:A:407:LEU:HD21	1:A:413:ILE:HG12	1.95	0.47
2:C:85:SER:HB3	2:C:90:GLU:HG3	1.96	0.47
2:C:209:ILE:O	2:C:212:THR:OG1	2.32	0.47
1:A:772:TRP:CH2	1:A:797:ILE:HB	2.50	0.46
1:A:688:LYS:HG3	1:A:689:GLU:H	1.81	0.46
1:A:185:ILE:HG23	1:A:370:VAL:HB	1.98	0.46
1:A:242:VAL:HG21	1:A:496:LEU:HD23	1.97	0.46
1:A:873:LEU:O	1:A:877:ILE:HG13	2.16	0.46
1:A:769:TYR:CE2	1:A:772:TRP:HD1	2.33	0.46
1:A:669:PHE:CZ	1:A:672:ARG:HB2	2.51	0.46
5:A:1401:2Y5:H28	5:A:1401:2Y5:H21	1.69	0.46
2:C:72:ASP:HB3	2:C:320:THR:HG23	1.98	0.46
1:A:1124:MET:O	1:A:1127:GLU:HG3	2.15	0.45
1:A:818:PRO:HG3	1:A:849:CYS:HA	1.97	0.45
1:A:1131:HIS:HA	2:C:277:ALA:HB2	1.97	0.45

Continued on next page...

Continued from previous page...

Atom-1	Atom-2	Interatomic distance (Å)	Clash overlap (Å)
1:A:287:PHE:HB2	1:A:294:PHE:CE1	2.50	0.45
1:A:764:ILE:HG13	1:A:765:SER:N	2.32	0.45
1:A:183:ARG:NH1	1:A:418:ILE:O	2.50	0.44
1:A:336:THR:HB	1:A:339:LEU:HB2	1.99	0.44
1:A:604:LYS:HB3	1:A:606:ASP:OD1	2.17	0.44
2:C:241:ILE:HD11	2:C:260:LEU:HD21	1.99	0.44
1:A:567:ARG:HH22	1:A:812:LYS:HD3	1.82	0.44
2:C:249:LYS:HD3	4:E:1:NAG:H83	1.99	0.44
2:C:55:ILE:HG22	2:C:56:PHE:HD2	1.83	0.44
1:A:612:LEU:HD13	1:A:623:ILE:HG22	2.00	0.44
1:A:884:GLN:OE1	1:A:884:GLN:N	2.38	0.44
1:A:200:ASP:OD1	1:A:200:ASP:N	2.40	0.43
1:A:673:LYS:HE3	1:A:676:SER:OG	2.18	0.43
2:C:24:PRO:HB2	2:C:26:THR:HG23	1.99	0.43
1:A:541:VAL:HG22	1:A:986:ALA:HB3	2.00	0.43
2:C:256:THR:H	2:C:259:ASN:HB2	1.83	0.43
2:C:241:ILE:HG13	2:C:255:TYR:HD1	1.84	0.43
2:C:150:HIS:O	2:C:154:VAL:HG23	2.19	0.43
1:A:769:TYR:HD2	1:A:772:TRP:HB3	1.81	0.43
1:A:1049:TYR:O	1:A:1054:THR:OG1	2.29	0.43
2:C:297:LYS:HB3	2:C:297:LYS:HE3	1.81	0.43
1:A:1008:ILE:HD12	1:A:1008:ILE:HA	1.92	0.42
2:C:176:CYS:HB3	2:C:190:CYS:HB2	1.87	0.42
1:A:255:LEU:O	1:A:259:ILE:HG12	2.19	0.42
1:A:724:ASP:HB3	1:A:758:CYS:SG	2.60	0.42
1:A:863:GLU:HG3	1:A:869:THR:HA	2.01	0.42
2:C:173:ASP:OD1	2:C:175:SER:OG	2.25	0.42
2:C:346:PHE:HA	2:C:349:ILE:HG12	2.02	0.42
1:A:449:ILE:O	1:A:453:THR:HG23	2.20	0.42
1:A:789:LYS:HZ3	1:A:793:ALA:HB2	1.84	0.42
2:C:55:ILE:HD13	2:C:55:ILE:HA	1.88	0.42
1:A:438:THR:HG22	1:A:440:VAL:H	1.84	0.42
1:A:1015:SER:HA	1:A:1018:LYS:HG2	2.00	0.42
1:A:1027:PHE:O	1:A:1030:VAL:HG22	2.19	0.42
1:A:502:PHE:HE2	1:A:1026:GLN:HB3	1.84	0.42
1:A:438:THR:HG23	1:A:550:GLU:HB3	2.01	0.42
1:A:294:PHE:CD2	1:A:309:ARG:HD2	2.55	0.41
1:A:403:ARG:HB3	1:A:424:THR:HG21	2.02	0.41
1:A:751:SER:O	1:A:751:SER:OG	2.36	0.41
2:C:220:LYS:HD3	2:C:220:LYS:HA	1.70	0.41
1:A:230:PHE:CZ	1:A:508:ILE:HG12	2.55	0.41

Continued on next page...

Continued from previous page...

Atom-1	Atom-2	Interatomic distance (Å)	Clash overlap (Å)
1:A:572:PHE:HZ	1:A:575:CYS:HB2	1.85	0.41
1:A:786:ARG:HG2	1:A:786:ARG:HH11	1.85	0.41
1:A:1014:TYR:CZ	1:A:1150:ALA:HB2	2.56	0.41
1:A:760:ALA:HB1	1:A:801:LEU:HB3	2.02	0.41
1:A:277:LYS:HG2	1:A:281:ASN:HD21	1.86	0.41
1:A:328:PRO:C	1:A:330:GLY:H	2.23	0.41
1:A:762:ARG:HH11	1:A:797:ILE:HG13	1.86	0.41
1:A:1121:ALA:O	1:A:1204:VAL:HG11	2.21	0.41
2:C:231:PHE:HD1	2:C:263:ILE:HB	1.86	0.40
2:C:55:ILE:O	2:C:58:PRO:HD2	2.21	0.40
1:A:740:GLU:O	1:A:744:ARG:HD3	2.21	0.40
1:A:969:VAL:HG22	1:A:985:ILE:HB	2.03	0.40
2:C:218:THR:HB	3:B:1:NAG:H81	2.04	0.40
1:A:856:MET:HA	1:A:892:THR:HB	2.01	0.40
1:A:865:THR:HG22	1:A:868:ASP:HB2	2.02	0.40
1:A:962:ILE:HG23	1:A:968:GLY:HA3	2.04	0.40

There are no symmetry-related clashes.

5.3 Torsion angles [i](#)

5.3.1 Protein backbone [i](#)

In the following table, the Percentiles column shows the percent Ramachandran outliers of the chain as a percentile score with respect to all PDB entries followed by that with respect to all EM entries.

The Analysed column shows the number of residues for which the backbone conformation was analysed, and the total number of residues.

Mol	Chain	Analysed	Favoured	Allowed	Outliers	Percentiles	
1	A	1063/1355 (78%)	997 (94%)	66 (6%)	0	100	100
2	C	348/391 (89%)	327 (94%)	21 (6%)	0	100	100
All	All	1411/1746 (81%)	1324 (94%)	87 (6%)	0	100	100

There are no Ramachandran outliers to report.

5.3.2 Protein sidechains [i](#)

In the following table, the Percentiles column shows the percent sidechain outliers of the chain as a percentile score with respect to all PDB entries followed by that with respect to all EM entries.

The Analysed column shows the number of residues for which the sidechain conformation was analysed, and the total number of residues.

Mol	Chain	Analysed	Rotameric	Outliers	Percentiles	
1	A	936/1191 (79%)	890 (95%)	46 (5%)	25	57
2	C	318/355 (90%)	304 (96%)	14 (4%)	28	61
All	All	1254/1546 (81%)	1194 (95%)	60 (5%)	29	58

All (60) residues with a non-rotameric sidechain are listed below:

Mol	Chain	Res	Type
1	A	185	ILE
1	A	202	HIS
1	A	203	ILE
1	A	204	SER
1	A	246	ASN
1	A	279	LEU
1	A	288	SER
1	A	295	VAL
1	A	299	TRP
1	A	324	SER
1	A	343	THR
1	A	354	THR
1	A	359	ASP
1	A	371	VAL
1	A	383	GLU
1	A	391	ARG
1	A	396	SER
1	A	410	THR
1	A	463	SER
1	A	533	TYR
1	A	559	SER
1	A	574	SER
1	A	584	ASP
1	A	605	PHE
1	A	617	ASP
1	A	635	THR
1	A	671	ILE

Continued on next page...

Continued from previous page...

Mol	Chain	Res	Type
1	A	709	PHE
1	A	720	CYS
1	A	734	GLU
1	A	763	ASP
1	A	765	SER
1	A	769	TYR
1	A	782	THR
1	A	943	ARG
1	A	1050	ASN
1	A	1105	SER
1	A	1142	SER
1	A	1158	THR
1	A	1189	SER
1	A	1193	TYR
1	A	1218	VAL
1	A	1224	LYS
1	A	1228	ARG
1	A	1229	MET
1	A	1245	ASN
2	C	44	SER
2	C	85	SER
2	C	91	ASP
2	C	111	TRP
2	C	115	GLU
2	C	116	ASN
2	C	140	TYR
2	C	174	THR
2	C	193	ILE
2	C	250	LYS
2	C	271	VAL
2	C	320	THR
2	C	361	MET
2	C	366	TYR

Sometimes sidechains can be flipped to improve hydrogen bonding and reduce clashes. All (1) such sidechains are listed below:

Mol	Chain	Res	Type
1	A	745	HIS

5.3.3 RNA [i](#)

There are no RNA molecules in this entry.

5.4 Non-standard residues in protein, DNA, RNA chains [i](#)

1 non-standard protein/DNA/RNA residue is modelled in this entry.

In the following table, the Counts columns list the number of bonds (or angles) for which Mogul statistics could be retrieved, the number of bonds (or angles) that are observed in the model and the number of bonds (or angles) that are defined in the Chemical Component Dictionary. The Link column lists molecule types, if any, to which the group is linked. The Z score for a bond length (or angle) is the number of standard deviations the observed value is removed from the expected value. A bond length (or angle) with $|Z| > 2$ is considered an outlier worth inspection. RMSZ is the root-mean-square of all Z scores of the bond lengths (or angles).

Mol	Type	Chain	Res	Link	Bond lengths			Bond angles		
					Counts	RMSZ	# Z > 2	Counts	RMSZ	# Z > 2
1	PHD	A	560	6,1	9,11,12	6.11	1 (11%)	10,15,17	1.80	3 (30%)

In the following table, the Chirals column lists the number of chiral outliers, the number of chiral centers analysed, the number of these observed in the model and the number defined in the Chemical Component Dictionary. Similar counts are reported in the Torsion and Rings columns. '-' means no outliers of that kind were identified.

Mol	Type	Chain	Res	Link	Chirals	Torsions	Rings
1	PHD	A	560	6,1	-	1/8/11/13	-

All (1) bond length outliers are listed below:

Mol	Chain	Res	Type	Atoms	Z	Observed(Å)	Ideal(Å)
1	A	560	PHD	P-OD1	18.18	1.86	1.59

All (3) bond angle outliers are listed below:

Mol	Chain	Res	Type	Atoms	Z	Observed(°)	Ideal(°)
1	A	560	PHD	OD1-P-OP1	-2.66	99.87	109.32
1	A	560	PHD	OP3-P-OP1	2.58	120.78	110.68
1	A	560	PHD	OD1-CG-CB	2.37	117.62	111.11

There are no chirality outliers.

All (1) torsion outliers are listed below:

Mol	Chain	Res	Type	Atoms
1	A	560	PHD	CA-CB-CG-OD1

There are no ring outliers.

No monomer is involved in short contacts.

5.5 Carbohydrates [i](#)

8 monosaccharides are modelled in this entry.

In the following table, the Counts columns list the number of bonds (or angles) for which Mogul statistics could be retrieved, the number of bonds (or angles) that are observed in the model and the number of bonds (or angles) that are defined in the Chemical Component Dictionary. The Link column lists molecule types, if any, to which the group is linked. The Z score for a bond length (or angle) is the number of standard deviations the observed value is removed from the expected value. A bond length (or angle) with $|Z| > 2$ is considered an outlier worth inspection. RMSZ is the root-mean-square of all Z scores of the bond lengths (or angles).

Mol	Type	Chain	Res	Link	Bond lengths			Bond angles		
					Counts	RMSZ	# Z > 2	Counts	RMSZ	# Z > 2
3	NAG	B	1	3	14,14,15	0.40	0	17,19,21	0.78	1 (5%)
3	NAG	B	2	3	14,14,15	0.99	1 (7%)	17,19,21	1.27	1 (5%)
3	NAG	D	1	3,2	14,14,15	0.22	0	17,19,21	0.43	0
3	NAG	D	2	3	14,14,15	0.24	0	17,19,21	0.41	0
4	NAG	E	1	2,4	14,14,15	0.23	0	17,19,21	0.40	0
4	NAG	E	2	4	14,14,15	0.23	0	17,19,21	0.53	0
4	BMA	E	3	4	11,11,12	0.64	0	15,15,17	0.92	0
4	BMA	E	4	4	11,11,12	0.99	0	15,15,17	1.03	1 (6%)

In the following table, the Chirals column lists the number of chiral outliers, the number of chiral centers analysed, the number of these observed in the model and the number defined in the Chemical Component Dictionary. Similar counts are reported in the Torsion and Rings columns. '-' means no outliers of that kind were identified.

Mol	Type	Chain	Res	Link	Chirals	Torsions	Rings
3	NAG	B	1	3	-	4/6/23/26	0/1/1/1
3	NAG	B	2	3	-	1/6/23/26	0/1/1/1
3	NAG	D	1	3,2	-	0/6/23/26	0/1/1/1
3	NAG	D	2	3	-	2/6/23/26	0/1/1/1
4	NAG	E	1	2,4	-	2/6/23/26	0/1/1/1
4	NAG	E	2	4	-	2/6/23/26	0/1/1/1
4	BMA	E	3	4	-	0/2/19/22	0/1/1/1

Continued on next page...

Continued from previous page...

Mol	Type	Chain	Res	Link	Chirals	Torsions	Rings
4	BMA	E	4	4	-	0/2/19/22	0/1/1/1

All (1) bond length outliers are listed below:

Mol	Chain	Res	Type	Atoms	Z	Observed(Å)	Ideal(Å)
3	B	2	NAG	O5-C1	3.54	1.49	1.43

All (3) bond angle outliers are listed below:

Mol	Chain	Res	Type	Atoms	Z	Observed(°)	Ideal(°)
3	B	2	NAG	C1-O5-C5	5.03	119.01	112.19
3	B	1	NAG	C1-O5-C5	2.90	116.12	112.19
4	E	4	BMA	C2-C3-C4	2.25	114.80	110.89

There are no chirality outliers.

All (11) torsion outliers are listed below:

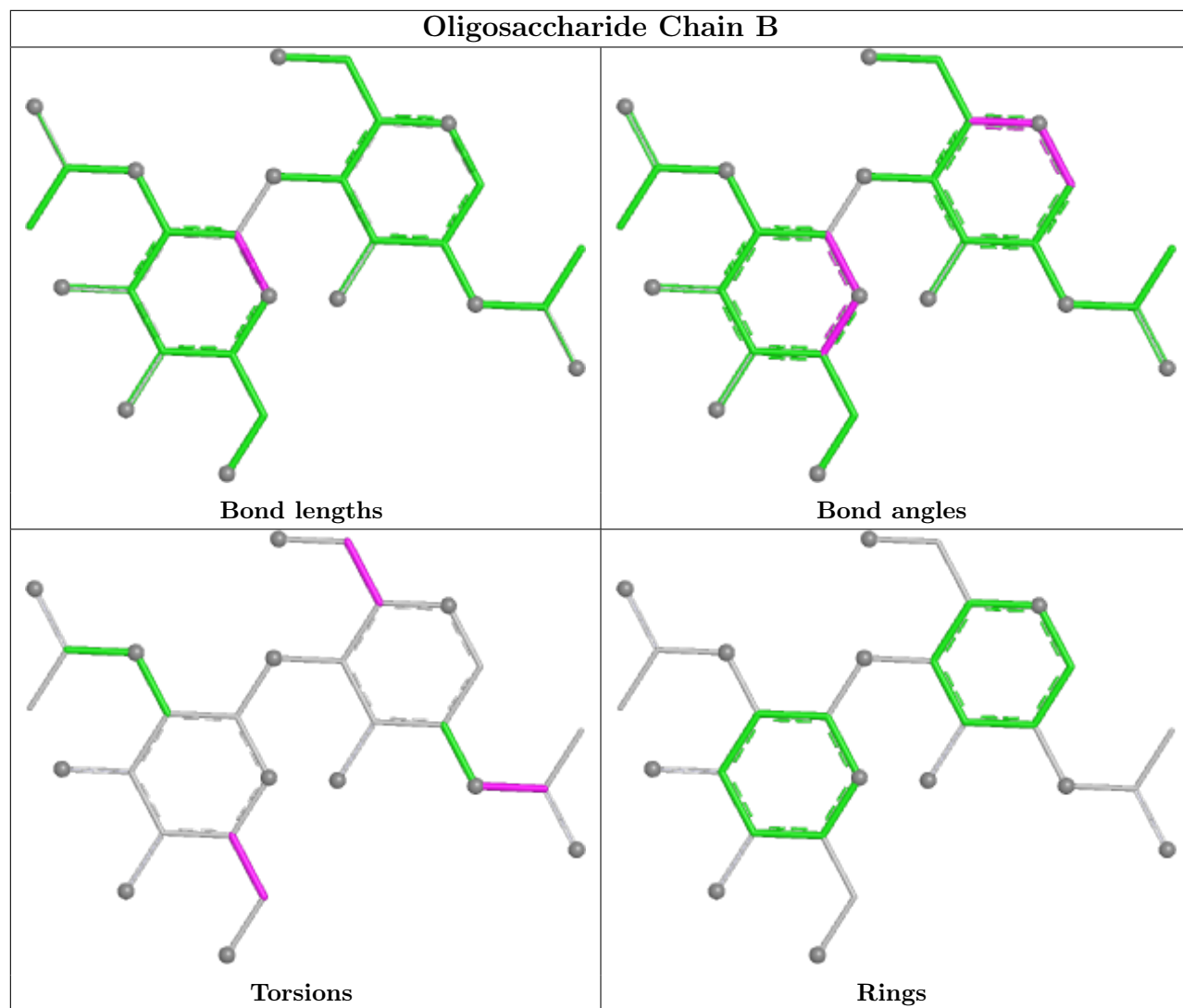
Mol	Chain	Res	Type	Atoms
3	D	2	NAG	C4-C5-C6-O6
3	B	1	NAG	O5-C5-C6-O6
3	B	1	NAG	C4-C5-C6-O6
3	B	1	NAG	C8-C7-N2-C2
3	B	1	NAG	O7-C7-N2-C2
4	E	1	NAG	O5-C5-C6-O6
4	E	1	NAG	C4-C5-C6-O6
3	D	2	NAG	O5-C5-C6-O6
3	B	2	NAG	O5-C5-C6-O6
4	E	2	NAG	C3-C2-N2-C7
4	E	2	NAG	C4-C5-C6-O6

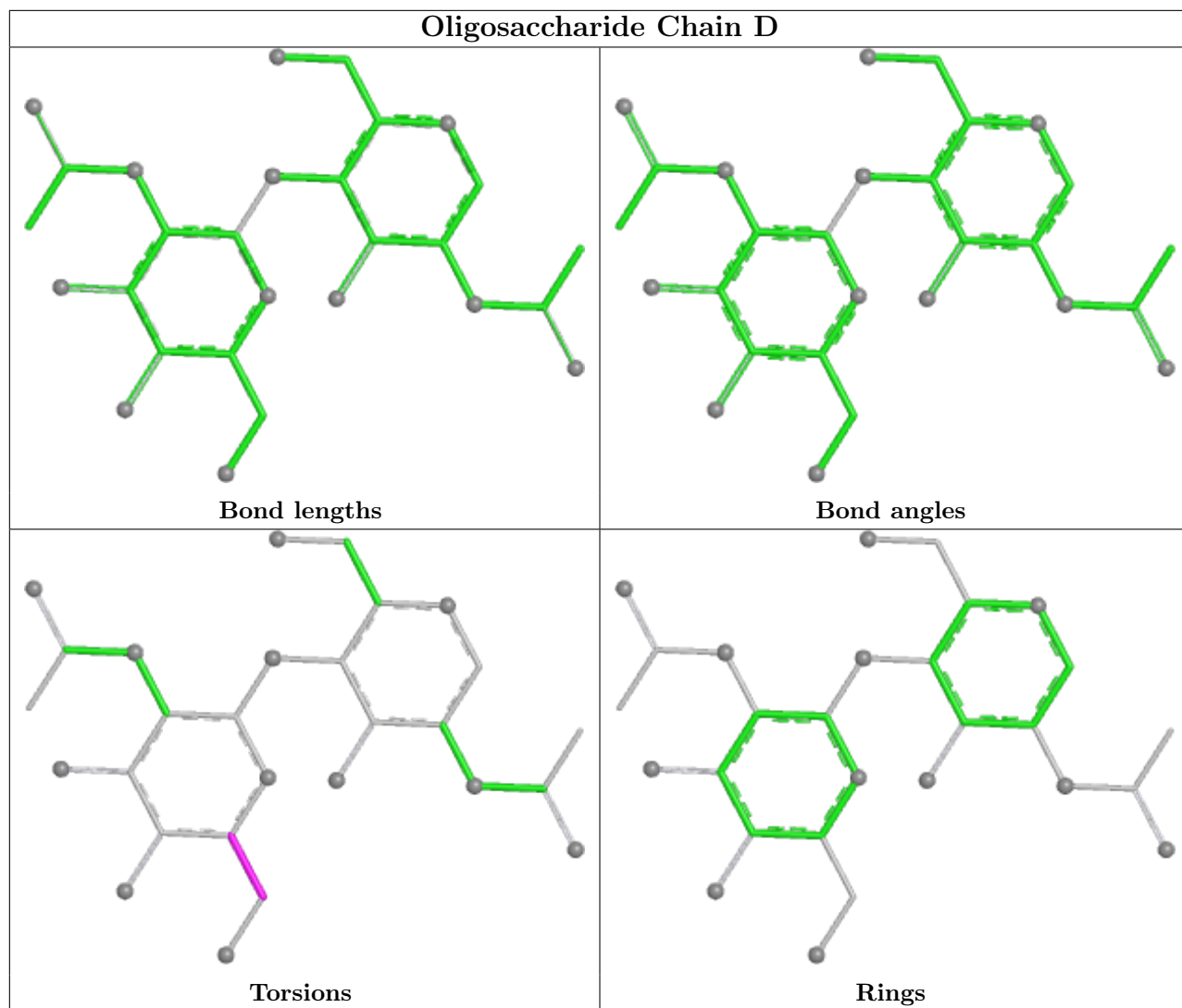
There are no ring outliers.

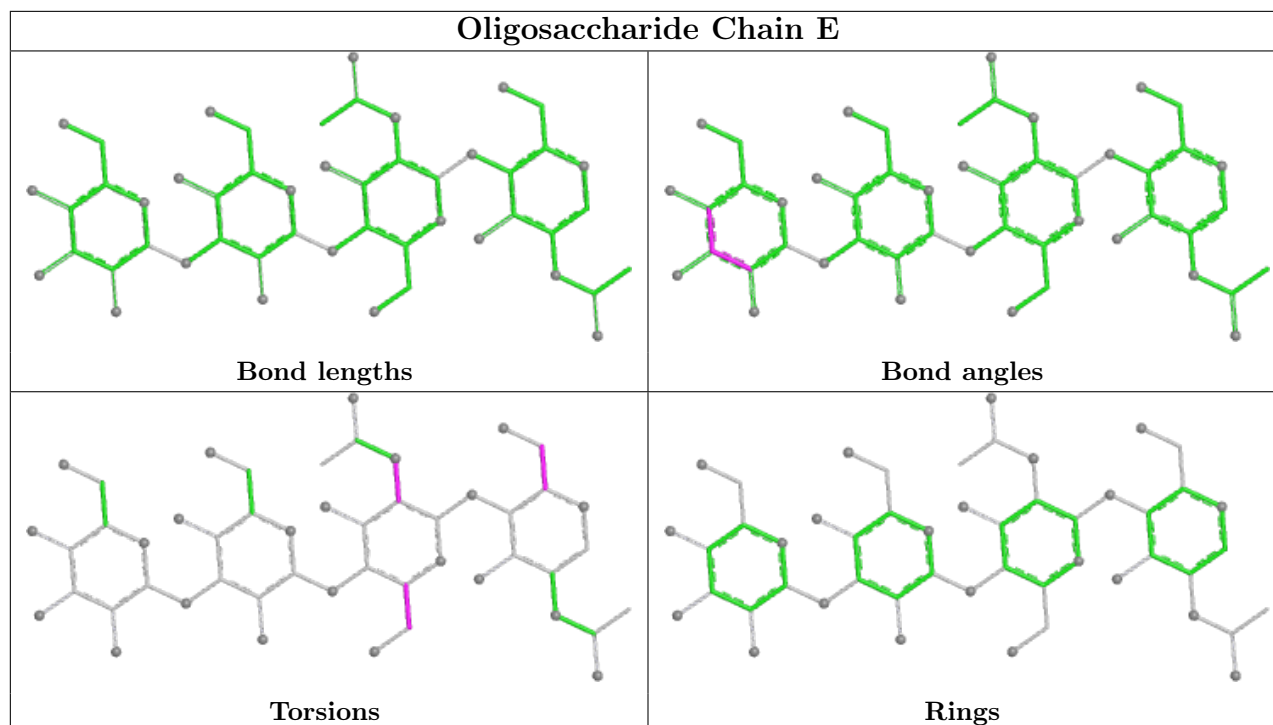
3 monomers are involved in 3 short contacts:

Mol	Chain	Res	Type	Clashes	Symm-Clashes
4	E	1	NAG	1	0
4	E	2	NAG	1	0
3	B	1	NAG	1	0

The following is a two-dimensional graphical depiction of Mogul quality analysis of bond lengths, bond angles, torsion angles, and ring geometry for oligosaccharide.







5.6 Ligand geometry [i](#)

Of 4 ligands modelled in this entry, 1 is monoatomic - leaving 3 for Mogul analysis.

In the following table, the Counts columns list the number of bonds (or angles) for which Mogul statistics could be retrieved, the number of bonds (or angles) that are observed in the model and the number of bonds (or angles) that are defined in the Chemical Component Dictionary. The Link column lists molecule types, if any, to which the group is linked. The Z score for a bond length (or angle) is the number of standard deviations the observed value is removed from the expected value. A bond length (or angle) with $|Z| > 2$ is considered an outlier worth inspection. RMSZ is the root-mean-square of all Z scores of the bond lengths (or angles).

Mol	Type	Chain	Res	Link	Bond lengths			Bond angles		
					Counts	RMSZ	$\# Z > 2$	Counts	RMSZ	$\# Z > 2$
8	Q3G	A	1404	-	50,51,51	0.91	4 (8%)	54,58,58	1.13	2 (3%)
7	ATP	A	1403	-	26,33,33	1.85	3 (11%)	31,52,52	2.41	10 (32%)
5	2Y5	A	1401	-	65,65,65	0.94	5 (7%)	77,80,80	1.02	4 (5%)

In the following table, the Chirals column lists the number of chiral outliers, the number of chiral centers analysed, the number of these observed in the model and the number defined in the Chemical Component Dictionary. Similar counts are reported in the Torsion and Rings columns. '-' means no outliers of that kind were identified.

Mol	Type	Chain	Res	Link	Chirals	Torsions	Rings
8	Q3G	A	1404	-	-	17/57/57/57	-

Continued on next page...

Continued from previous page...

Mol	Type	Chain	Res	Link	Chirals	Torsions	Rings
7	ATP	A	1403	-	-	3/18/38/38	0/3/3/3
5	2Y5	A	1401	-	-	20/61/85/85	0/1/1/1

All (12) bond length outliers are listed below:

Mol	Chain	Res	Type	Atoms	Z	Observed(Å)	Ideal(Å)
7	A	1403	ATP	PA-O5'	7.26	1.88	1.59
5	A	1401	2Y5	P4-O4	3.38	1.65	1.59
7	A	1403	ATP	O5'-C5'	-2.66	1.34	1.44
5	A	1401	2Y5	O16-C8	-2.50	1.40	1.46
8	A	1404	Q3G	O35-C22	-2.49	1.40	1.46
5	A	1401	2Y5	O18-C11	2.39	1.40	1.33
8	A	1404	Q3G	O20-C18	2.38	1.40	1.33
7	A	1403	ATP	C2-N1	2.32	1.38	1.33
5	A	1401	2Y5	O16-C10	2.18	1.40	1.34
8	A	1404	Q3G	O20-C21	-2.17	1.40	1.45
5	A	1401	2Y5	O18-C9	-2.14	1.40	1.45
8	A	1404	Q3G	O35-C36	2.14	1.40	1.34

All (16) bond angle outliers are listed below:

Mol	Chain	Res	Type	Atoms	Z	Observed(°)	Ideal(°)
7	A	1403	ATP	PA-O3A-PB	-6.72	109.75	132.83
7	A	1403	ATP	PB-O3B-PG	-5.72	113.20	132.83
7	A	1403	ATP	O5'-PA-O1A	-4.92	89.82	109.07
5	A	1401	2Y5	O16-C10-C12	4.04	120.20	111.50
8	A	1404	Q3G	O35-C36-C38	3.91	119.92	111.50
7	A	1403	ATP	O2A-PA-O5'	-3.90	89.64	107.75
7	A	1403	ATP	O3G-PG-O3B	-2.90	94.90	104.64
7	A	1403	ATP	O3G-PG-O2G	2.77	118.24	107.64
7	A	1403	ATP	PA-O5'-C5'	-2.77	105.44	121.68
7	A	1403	ATP	C5'-C4'-C3'	-2.66	105.23	115.18
5	A	1401	2Y5	C6-C1-C2	2.57	114.56	110.85
7	A	1403	ATP	O3B-PG-O1G	-2.57	96.94	111.19
5	A	1401	2Y5	O18-C11-C31	2.54	119.89	111.91
8	A	1404	Q3G	O20-C18-C17	2.46	119.64	111.91
5	A	1401	2Y5	C12-C13-C14	-2.13	109.43	113.23
7	A	1403	ATP	O2G-PG-O3B	2.11	111.71	104.64

There are no chirality outliers.

All (40) torsion outliers are listed below:

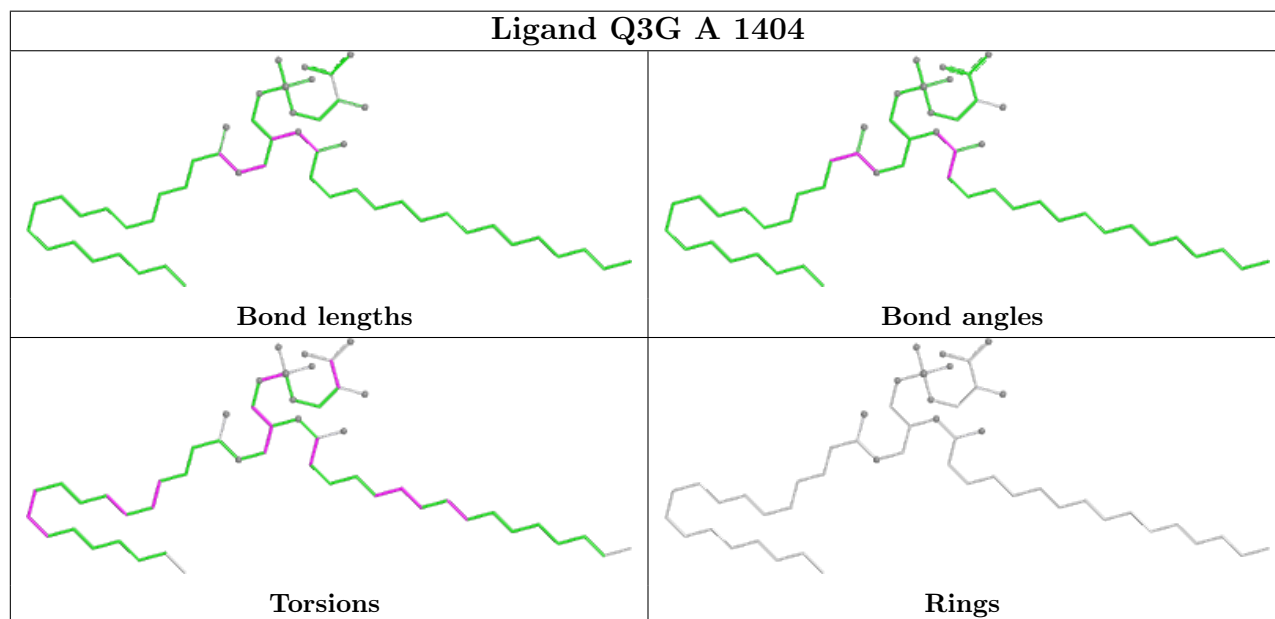
Mol	Chain	Res	Type	Atoms
5	A	1401	2Y5	C3-C4-O4-P4
5	A	1401	2Y5	O17-C10-O16-C8
5	A	1401	2Y5	C18-C19-C20-C21
8	A	1404	Q3G	C29-C30-C31-O32
8	A	1404	Q3G	C29-C30-C31-O33
5	A	1401	2Y5	O19-C11-O18-C9
5	A	1401	2Y5	C12-C10-O16-C8
5	A	1401	2Y5	C31-C11-O18-C9
7	A	1403	ATP	O4'-C4'-C5'-O5'
7	A	1403	ATP	C3'-C4'-C5'-O5'
5	A	1401	2Y5	C33-C34-C35-C36
5	A	1401	2Y5	C39-C40-C41-C42
8	A	1404	Q3G	C21-C22-C23-O24
5	A	1401	2Y5	C8-C7-O13-P1
5	A	1401	2Y5	C37-C38-C39-C40
8	A	1404	Q3G	C13-C14-C15-C16
5	A	1401	2Y5	C22-C23-C24-C25
8	A	1404	Q3G	O35-C22-C23-O24
8	A	1404	Q3G	C6-C7-C8-C09
7	A	1403	ATP	PB-O3B-PG-O3G
5	A	1401	2Y5	C32-C33-C34-C35
5	A	1401	2Y5	C4-O4-P4-O41
5	A	1401	2Y5	C4-O4-P4-O42
5	A	1401	2Y5	C7-O13-P1-O1
8	A	1404	Q3G	C40-C41-C42-C43
5	A	1401	2Y5	C42-C43-C44-C45
8	A	1404	Q3G	C43-C44-C45-C46
8	A	1404	Q3G	C41-C42-C43-C44
8	A	1404	Q3G	C23-O24-P25-O28
8	A	1404	Q3G	C10-C09-C8-C7
8	A	1404	Q3G	O20-C21-C22-O35
8	A	1404	Q3G	N34-C30-C31-O32
5	A	1401	2Y5	C24-C25-C26-C27
5	A	1401	2Y5	C31-C32-C33-C34
8	A	1404	Q3G	C11-C12-C13-C14
5	A	1401	2Y5	O16-C10-C12-C13
8	A	1404	Q3G	O35-C36-C38-C39
8	A	1404	Q3G	N34-C30-C31-O33
5	A	1401	2Y5	O17-C10-C12-C13
8	A	1404	Q3G	O37-C36-C38-C39

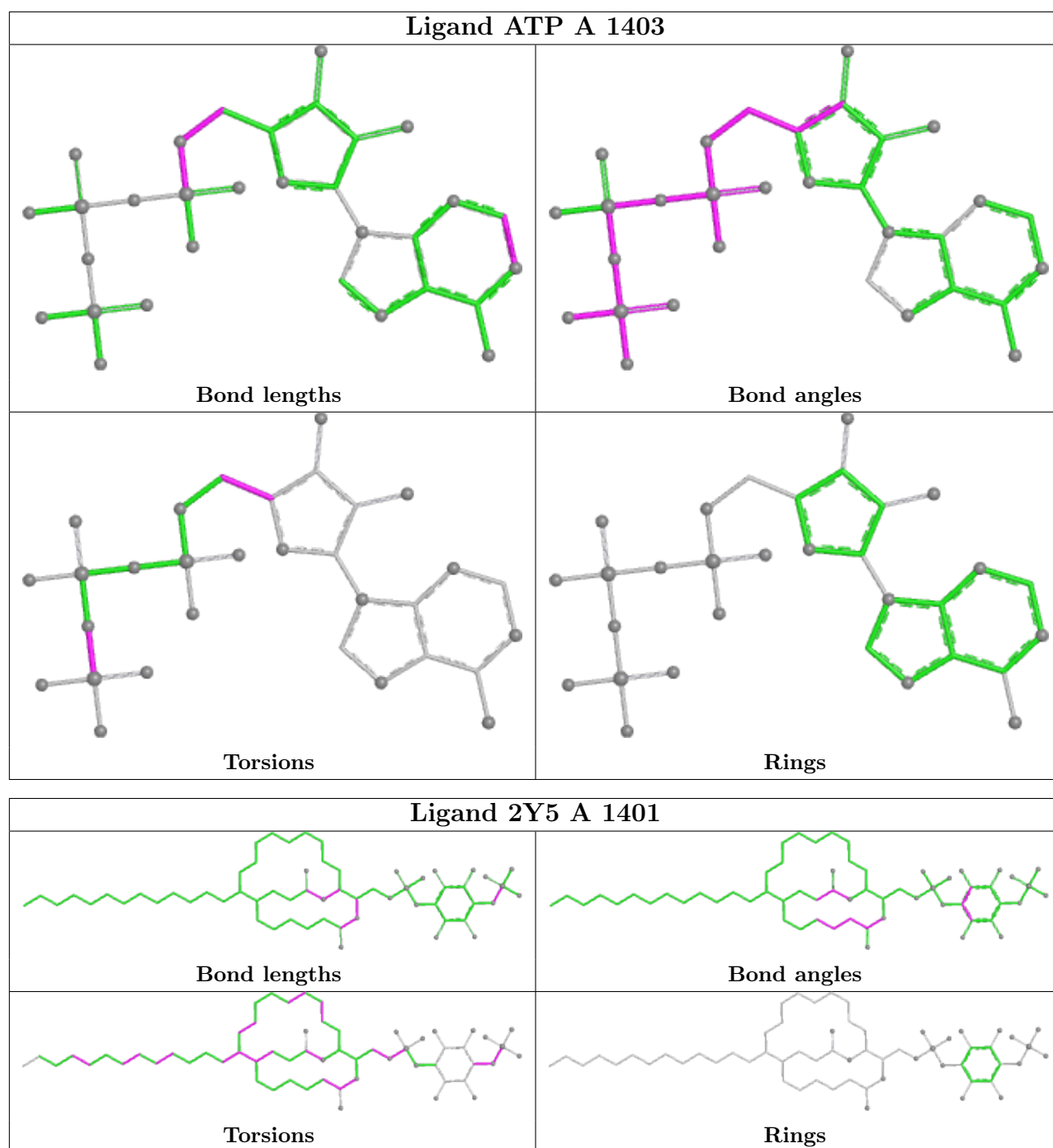
There are no ring outliers.

1 monomer is involved in 1 short contact:

Mol	Chain	Res	Type	Clashes	Symm-Clashes
5	A	1401	2Y5	1	0

The following is a two-dimensional graphical depiction of Mogul quality analysis of bond lengths, bond angles, torsion angles, and ring geometry for all instances of the Ligand of Interest. In addition, ligands with molecular weight > 250 and outliers as shown on the validation Tables will also be included. For torsion angles, if less than 5% of the Mogul distribution of torsion angles is within 10 degrees of the torsion angle in question, then that torsion angle is considered an outlier. Any bond that is central to one or more torsion angles identified as an outlier by Mogul will be highlighted in the graph. For rings, the root-mean-square deviation (RMSD) between the ring in question and similar rings identified by Mogul is calculated over all ring torsion angles. If the average RMSD is greater than 60 degrees and the minimal RMSD between the ring in question and any Mogul-identified rings is also greater than 60 degrees, then that ring is considered an outlier. The outliers are highlighted in purple. The color gray indicates Mogul did not find sufficient equivalents in the CSD to analyse the geometry.





5.7 Other polymers [\(i\)](#)

There are no such residues in this entry.

5.8 Polymer linkage issues [\(i\)](#)

There are no chain breaks in this entry.

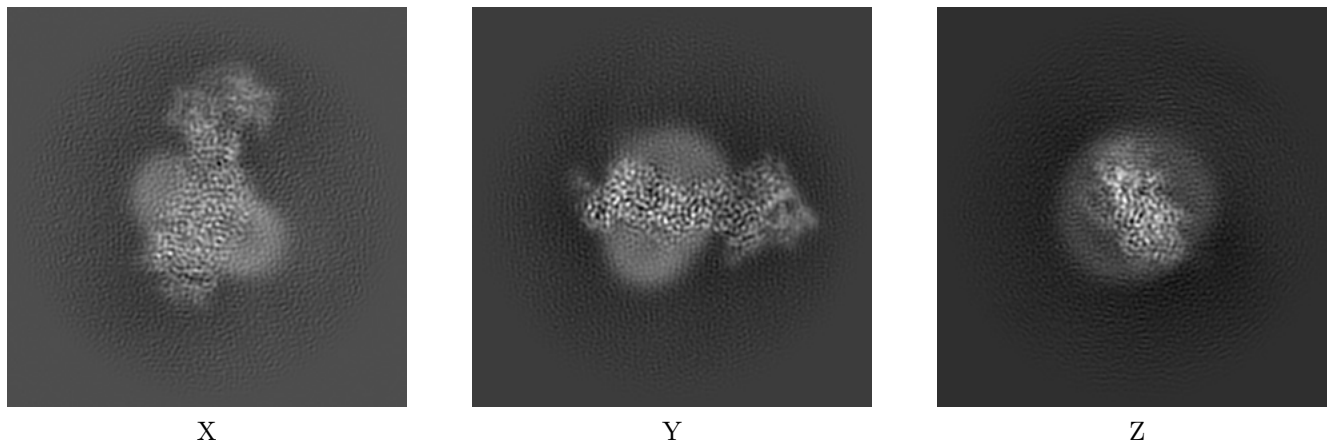
6 Map visualisation [i](#)

This section contains visualisations of the EMDB entry EMD-13353. These allow visual inspection of the internal detail of the map and identification of artifacts.

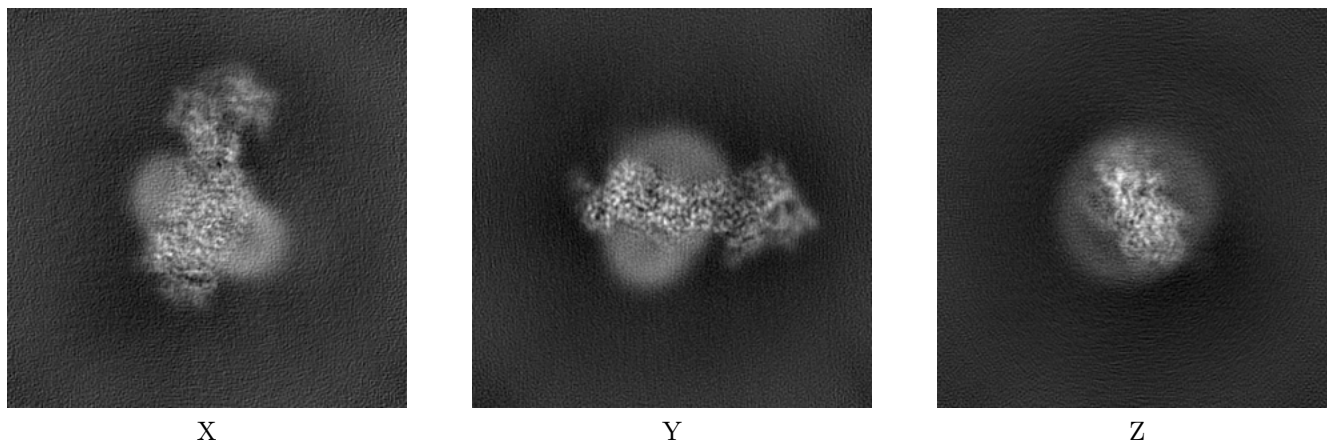
Images derived from a raw map, generated by summing the deposited half-maps, are presented below the corresponding image components of the primary map to allow further visual inspection and comparison with those of the primary map.

6.1 Orthogonal projections [i](#)

6.1.1 Primary map



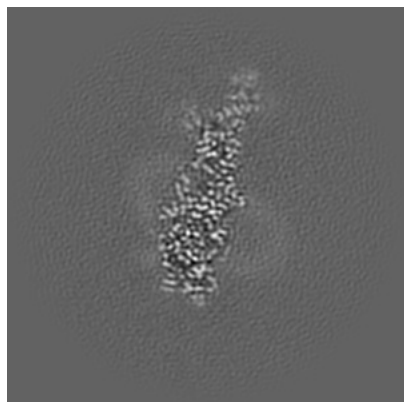
6.1.2 Raw map



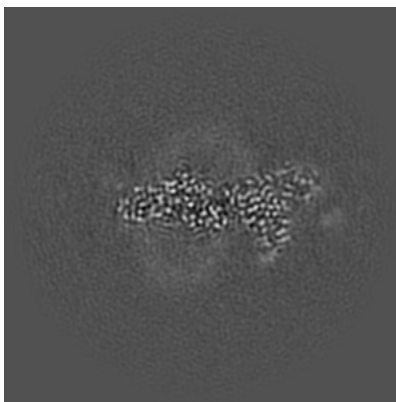
The images above show the map projected in three orthogonal directions.

6.2 Central slices [i](#)

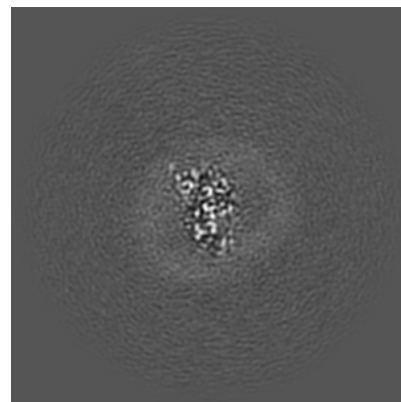
6.2.1 Primary map



X Index: 128

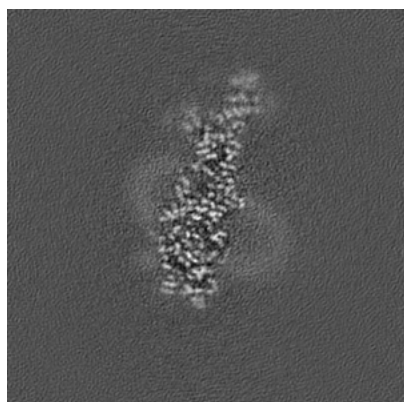


Y Index: 128

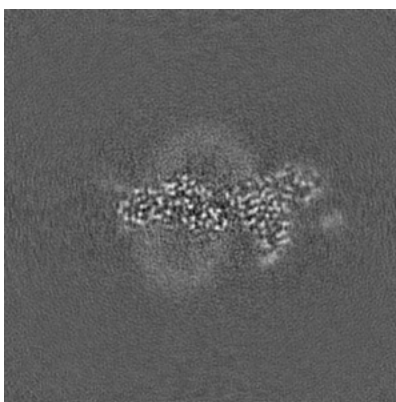


Z Index: 128

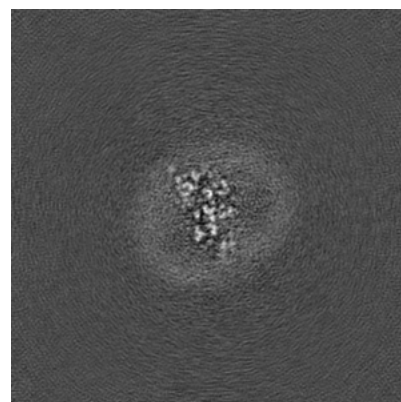
6.2.2 Raw map



X Index: 128



Y Index: 128

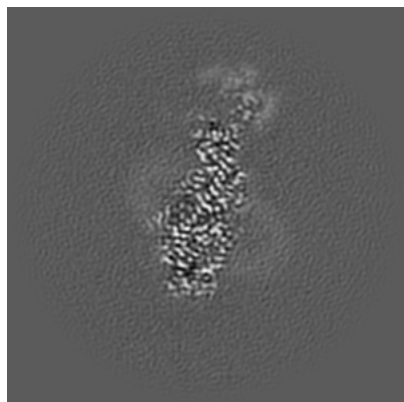


Z Index: 128

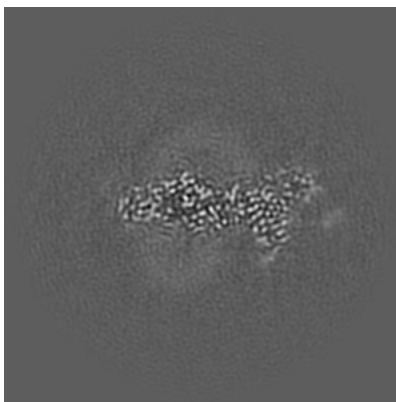
The images above show central slices of the map in three orthogonal directions.

6.3 Largest variance slices [i](#)

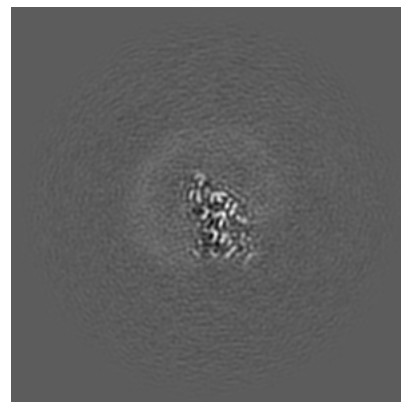
6.3.1 Primary map



X Index: 124

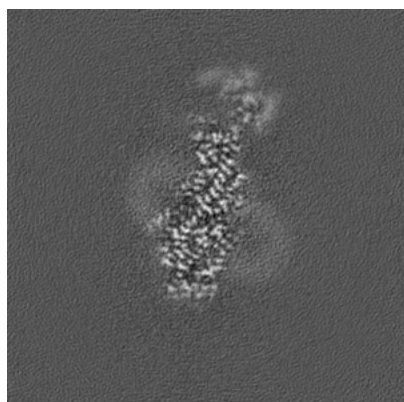


Y Index: 129

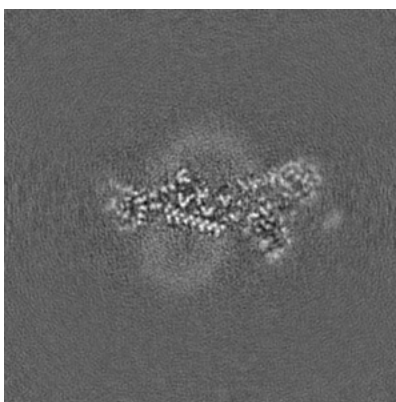


Z Index: 108

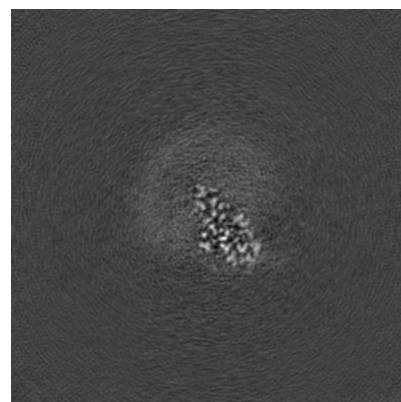
6.3.2 Raw map



X Index: 124



Y Index: 125

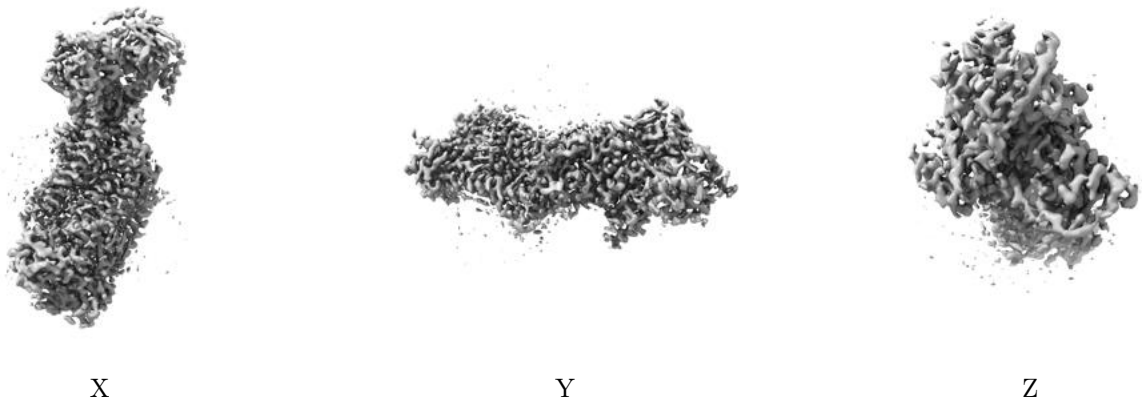


Z Index: 98

The images above show the largest variance slices of the map in three orthogonal directions.

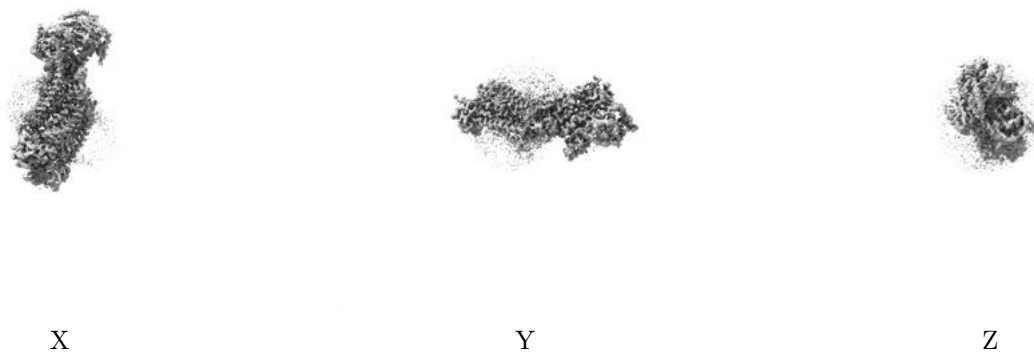
6.4 Orthogonal surface views [i](#)

6.4.1 Primary map



The images above show the 3D surface view of the map at the recommended contour level 0.19. These images, in conjunction with the slice images, may facilitate assessment of whether an appropriate contour level has been provided.

6.4.2 Raw map



These images show the 3D surface of the raw map. The raw map's contour level was selected so that its surface encloses the same volume as the primary map does at its recommended contour level.

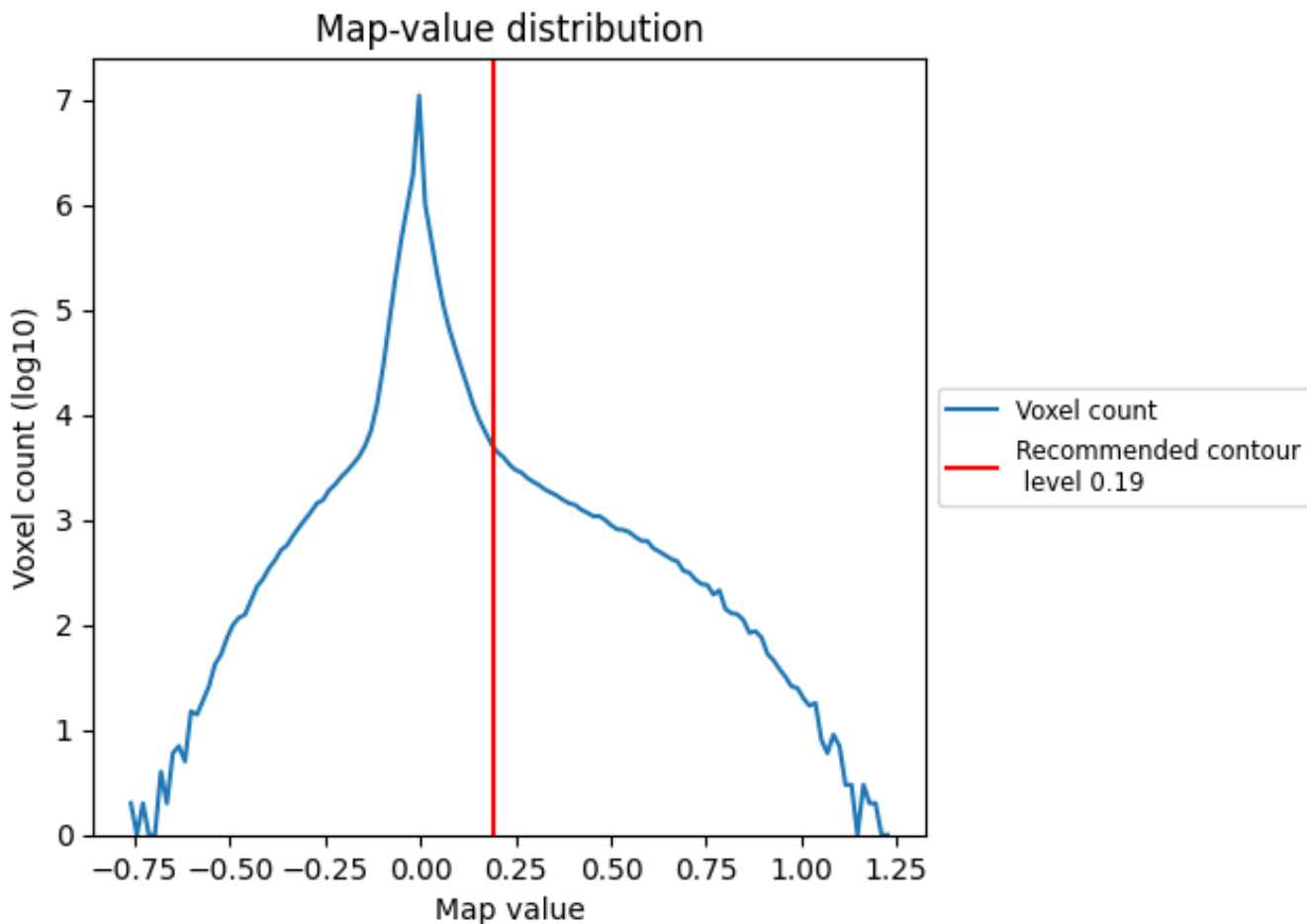
6.5 Mask visualisation [i](#)

This section was not generated. No masks/segmentation were deposited.

7 Map analysis [i](#)

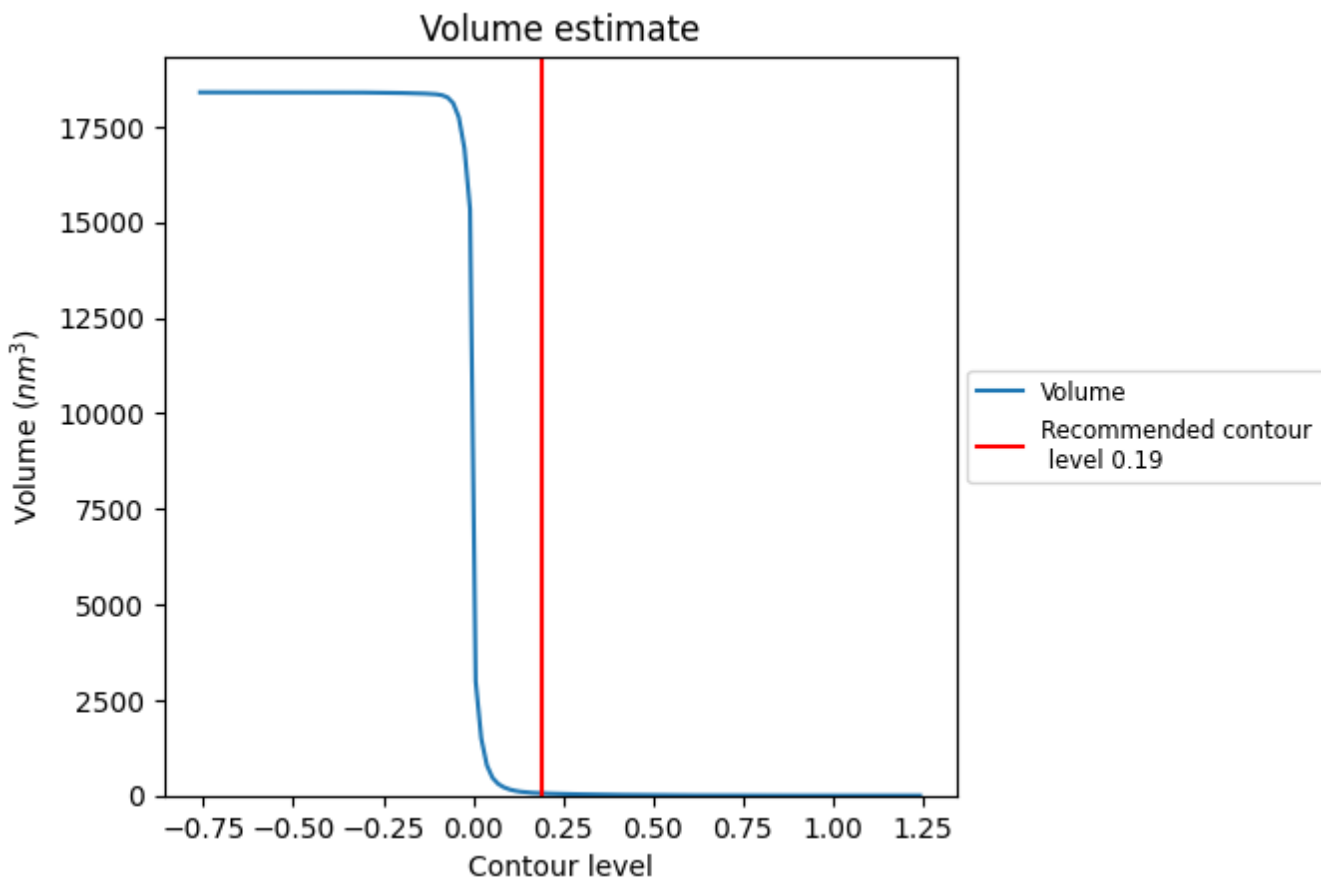
This section contains the results of statistical analysis of the map.

7.1 Map-value distribution [i](#)



The map-value distribution is plotted in 128 intervals along the x-axis. The y-axis is logarithmic. A spike in this graph at zero usually indicates that the volume has been masked.

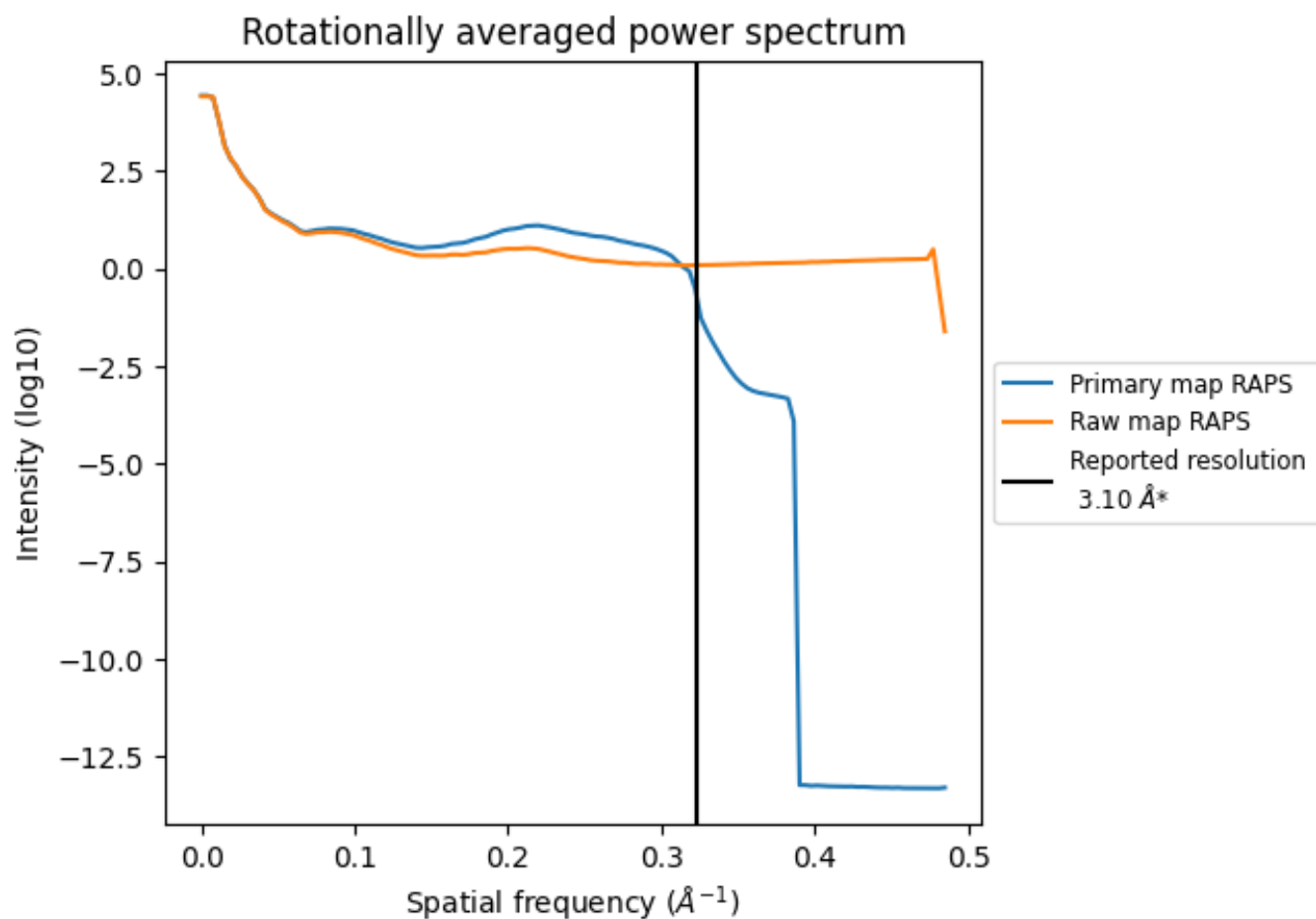
7.2 Volume estimate [i](#)



The volume at the recommended contour level is 60 nm³; this corresponds to an approximate mass of 54 kDa.

The volume estimate graph shows how the enclosed volume varies with the contour level. The recommended contour level is shown as a vertical line and the intersection between the line and the curve gives the volume of the enclosed surface at the given level.

7.3 Rotationally averaged power spectrum [i](#)

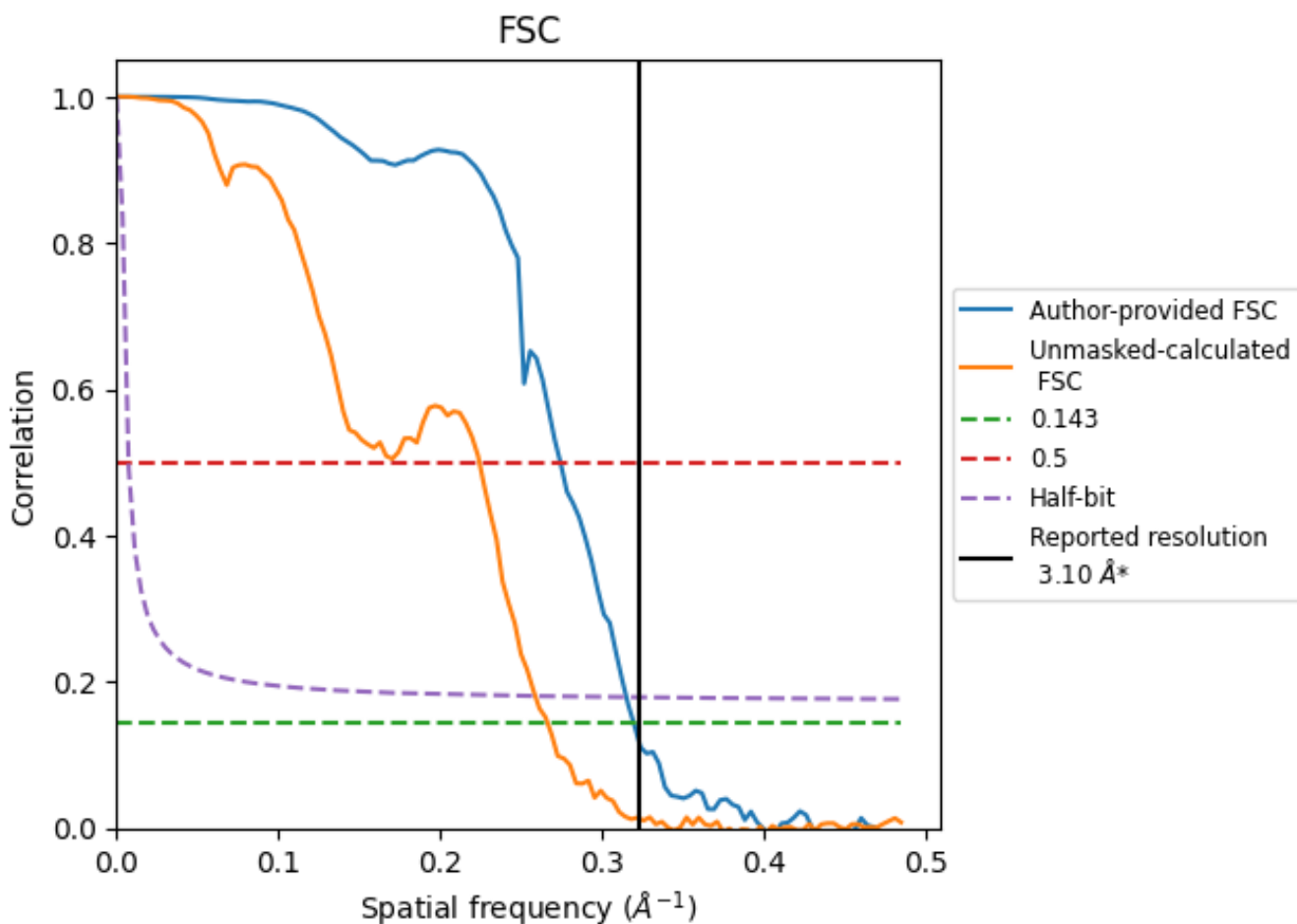


*Reported resolution corresponds to spatial frequency of 0.323 Å⁻¹

8 Fourier-Shell correlation [i](#)

Fourier-Shell Correlation (FSC) is the most commonly used method to estimate the resolution of single-particle and subtomogram-averaged maps. The shape of the curve depends on the imposed symmetry, mask and whether or not the two 3D reconstructions used were processed from a common reference. The reported resolution is shown as a black line. A curve is displayed for the half-bit criterion in addition to lines showing the 0.143 gold standard cut-off and 0.5 cut-off.

8.1 FSC [i](#)



*Reported resolution corresponds to spatial frequency of 0.323 Å⁻¹

8.2 Resolution estimates [i](#)

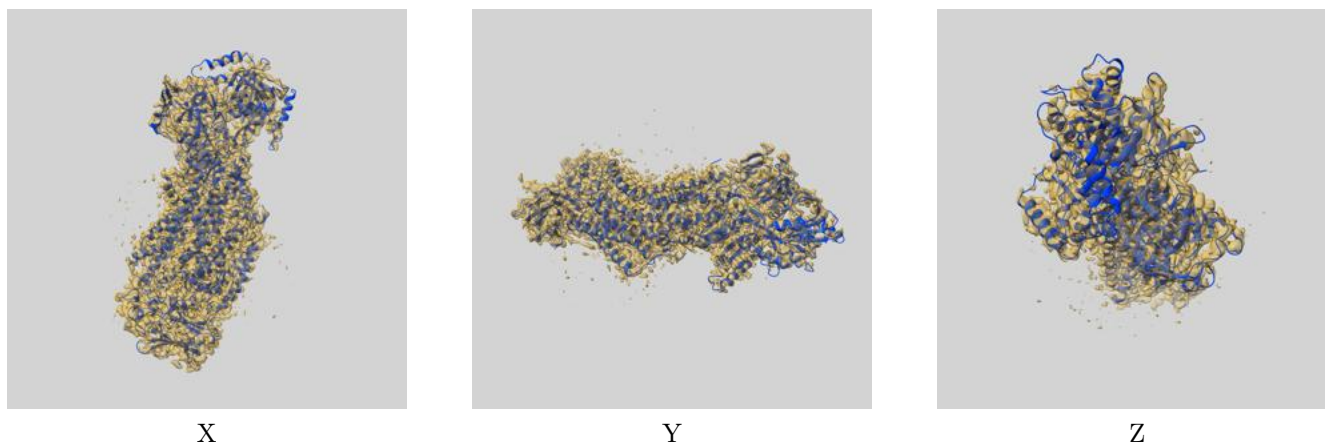
Resolution estimate (Å)	Estimation criterion (FSC cut-off)		
	0.143	0.5	Half-bit
Reported by author	3.10	-	-
Author-provided FSC curve	3.13	3.64	3.17
Unmasked-calculated*	3.75	4.46	3.86

*Resolution estimate based on FSC curve calculated by comparison of deposited half-maps. The value from deposited half-maps intersecting FSC 0.143 CUT-OFF 3.75 differs from the reported value 3.1 by more than 10 %

9 Map-model fit [i](#)

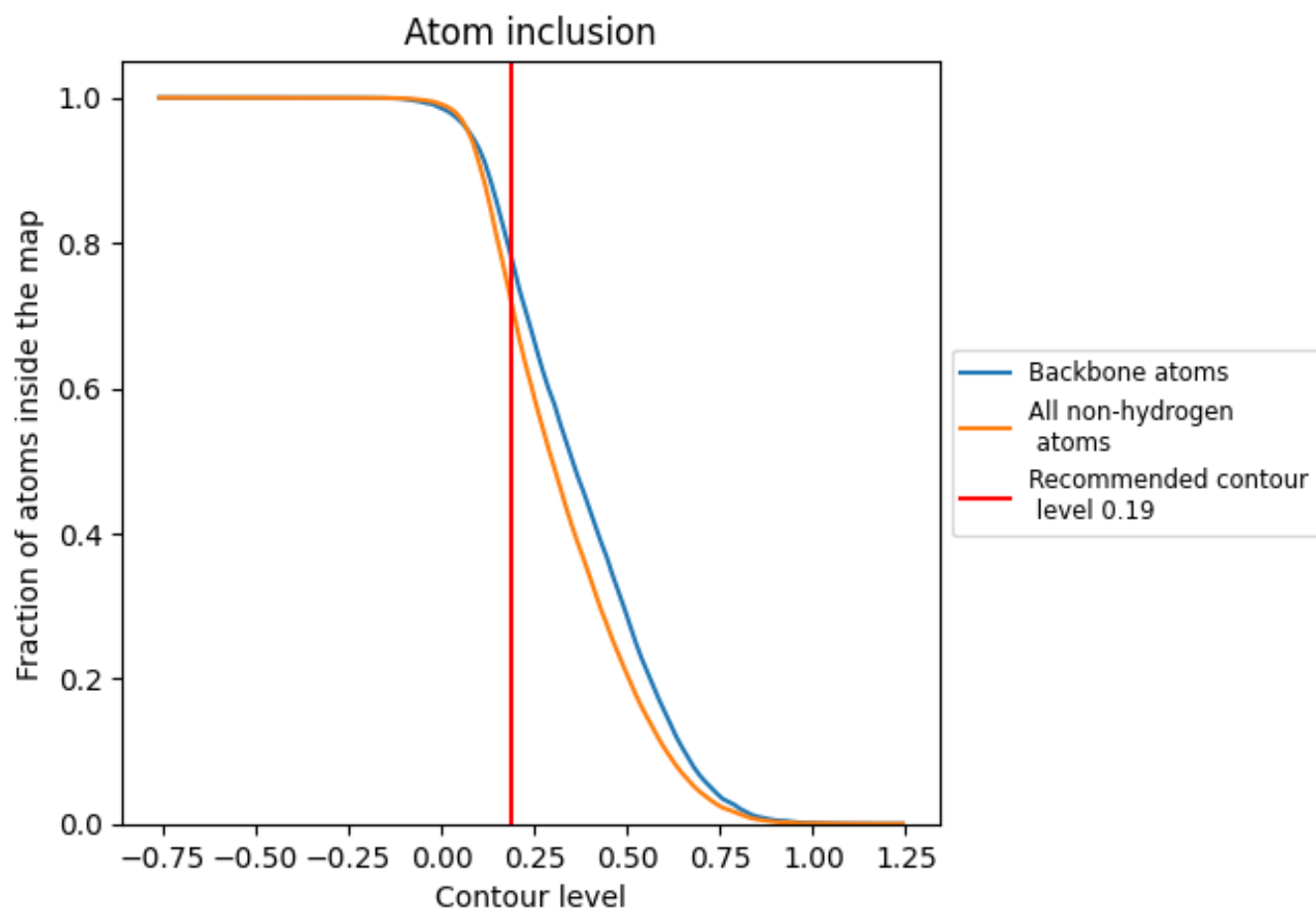
This section contains information regarding the fit between EMDB map EMD-13353 and PDB model 7PEM. Per-residue inclusion information can be found in section [3](#) on page [7](#).

9.1 Map-model overlay [i](#)



The images above show the 3D surface view of the map at the recommended contour level 0.19 at 50% transparency in yellow overlaid with a ribbon representation of the model coloured in blue. These images allow for the visual assessment of the quality of fit between the atomic model and the map.

9.2 Atom inclusion [i](#)



At the recommended contour level, 78% of all backbone atoms, 72% of all non-hydrogen atoms, are inside the map.