



Full wwPDB X-ray Structure Validation Report ⓘ

Oct 29, 2024 – 09:59 AM EDT

PDB ID : 3PI5
Title : Crystal Structure of Human Beta Secretase in Complex with BFG356
Authors : Rondeau, J.M.
Deposited on : 2010-11-05
Resolution : 2.40 Å(reported)

This is a Full wwPDB X-ray Structure Validation Report for a publicly released PDB entry.

We welcome your comments at validation@mail.wwpdb.org

A user guide is available at

<https://www.wwpdb.org/validation/2017/XrayValidationReportHelp>

with specific help available everywhere you see the ⓘ symbol.

The types of validation reports are described at

<http://www.wwpdb.org/validation/2017/FAQs#types>.

The following versions of software and data (see [references ⓘ](#)) were used in the production of this report:

MolProbity : 4.02b-467
Mogul : 2022.3.0, CSD as543be (2022)
Xtrriage (Phenix) : 1.20.1
EDS : 3.0
buster-report : 1.1.7 (2018)
Percentile statistics : 20231227.v01 (using entries in the PDB archive December 27th 2023)
CCP4 : 9.0.003 (Gargrove)
Density-Fitness : 1.0.11
Ideal geometry (proteins) : Engh & Huber (2001)
Ideal geometry (DNA, RNA) : Parkinson et al. (1996)
Validation Pipeline (wwPDB-VP) : 2.39

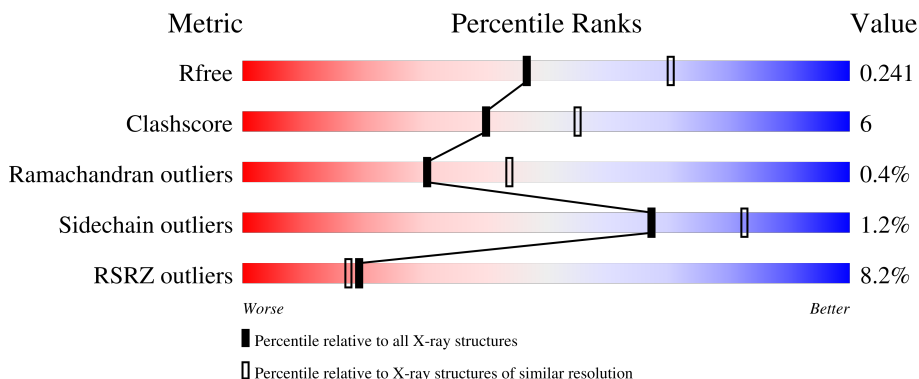
1 Overall quality at a glance

The following experimental techniques were used to determine the structure:

X-RAY DIFFRACTION

The reported resolution of this entry is 2.40 Å.

Percentile scores (ranging between 0-100) for global validation metrics of the entry are shown in the following graphic. The table shows the number of entries on which the scores are based.



Metric	Whole archive (#Entries)	Similar resolution (#Entries, resolution range(Å))
R_{free}	164625	4642 (2.40-2.40)
Clashscore	180529	5218 (2.40-2.40)
Ramachandran outliers	177936	5158 (2.40-2.40)
Sidechain outliers	177891	5159 (2.40-2.40)
RSRZ outliers	164620	4642 (2.40-2.40)

The table below summarises the geometric issues observed across the polymeric chains and their fit to the electron density. The red, orange, yellow and green segments of the lower bar indicate the fraction of residues that contain outliers for ≥ 3 , 2, 1 and 0 types of geometric quality criteria respectively. A grey segment represents the fraction of residues that are not modelled. The numeric value for each fraction is indicated below the corresponding segment, with a dot representing fractions $\leq 5\%$. The upper red bar (where present) indicates the fraction of residues that have poor fit to the electron density. The numeric value is given above the bar.

Mol	Chain	Length	Quality of chain
1	A	402	 6% 79% 14% 6%
1	B	402	 9% 78% 15% 6%
1	C	402	 8% 80% 14% 5%

2 Entry composition

There are 3 unique types of molecules in this entry. The entry contains 9476 atoms, of which 0 are hydrogens and 0 are deuteriums.

In the tables below, the ZeroOcc column contains the number of atoms modelled with zero occupancy, the AltConf column contains the number of residues with at least one atom in alternate conformation and the Trace column contains the number of residues modelled with at most 2 atoms.

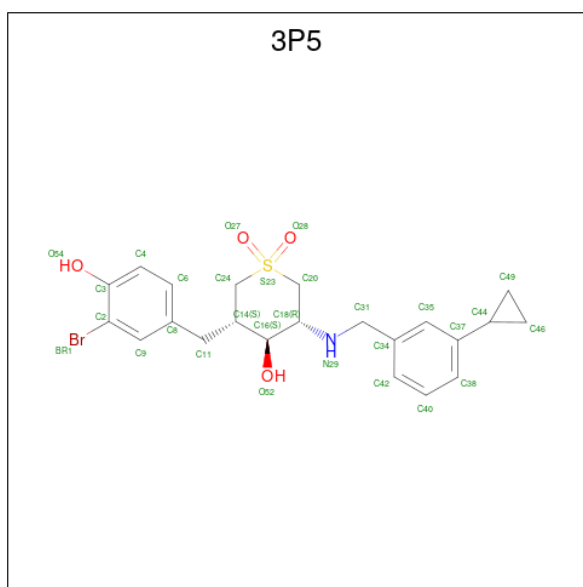
- Molecule 1 is a protein called Beta-secretase 1.

Mol	Chain	Residues	Atoms					ZeroOcc	AltConf	Trace
			Total	C	N	O	S			
1	A	377	2966	1898	493	561	14	0	0	0
1	B	377	2966	1898	493	561	14	0	0	0
1	C	381	2993	1917	497	565	14	0	0	0

There are 6 discrepancies between the modelled and reference sequences:

Chain	Residue	Modelled	Actual	Comment	Reference
A	33P	GLY	-	expression tag	UNP P56817
A	34P	PRO	-	expression tag	UNP P56817
B	33P	GLY	-	expression tag	UNP P56817
B	34P	PRO	-	expression tag	UNP P56817
C	33P	GLY	-	expression tag	UNP P56817
C	34P	PRO	-	expression tag	UNP P56817

- Molecule 2 is (3S,4S,5R)-3-(3-bromo-4-hydroxybenzyl)-5-[(3-cyclopropylbenzyl)amino]tetrahydro-2H-thiopyran-4-ol 1,1-dioxide (three-letter code: 3P5) (formula: C₂₂H₂₆BrNO₄S).



Mol	Chain	Residues	Atoms					ZeroOcc	AltConf	
			Total	Br	C	N	O			S
2	A	1	29	1	22	1	4	1	0	0
2	B	1	29	1	22	1	4	1	0	0
2	C	1	29	1	22	1	4	1	0	0

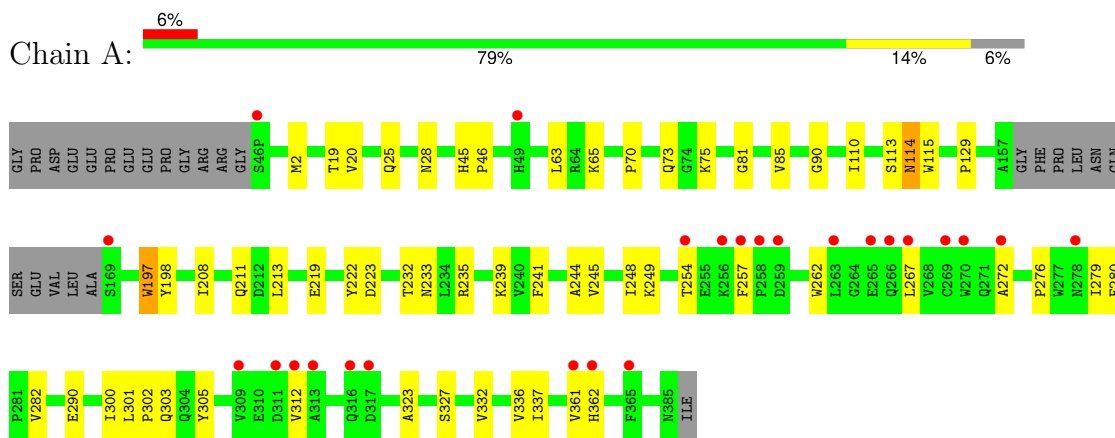
- Molecule 3 is water.

Mol	Chain	Residues	Atoms		ZeroOcc	AltConf
3	A	155	Total	O	0	0
			155	155		
3	B	133	Total	O	0	0
			133	133		
3	C	176	Total	O	0	0
			176	176		

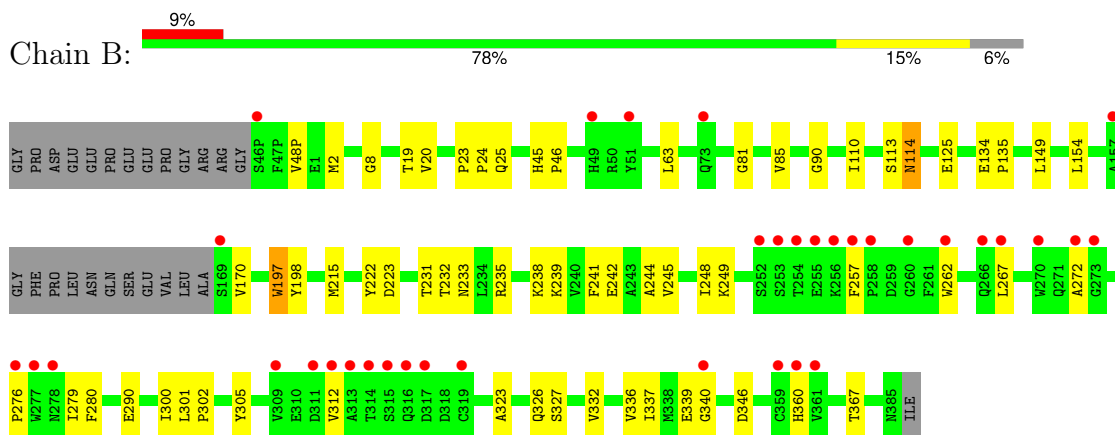
3 Residue-property plots [i](#)

These plots are drawn for all protein, RNA, DNA and oligosaccharide chains in the entry. The first graphic for a chain summarises the proportions of the various outlier classes displayed in the second graphic. The second graphic shows the sequence view annotated by issues in geometry and electron density. Residues are color-coded according to the number of geometric quality criteria for which they contain at least one outlier: green = 0, yellow = 1, orange = 2 and red = 3 or more. A red dot above a residue indicates a poor fit to the electron density ($RSRZ > 2$). Stretches of 2 or more consecutive residues without any outlier are shown as a green connector. Residues present in the sample, but not in the model, are shown in grey.

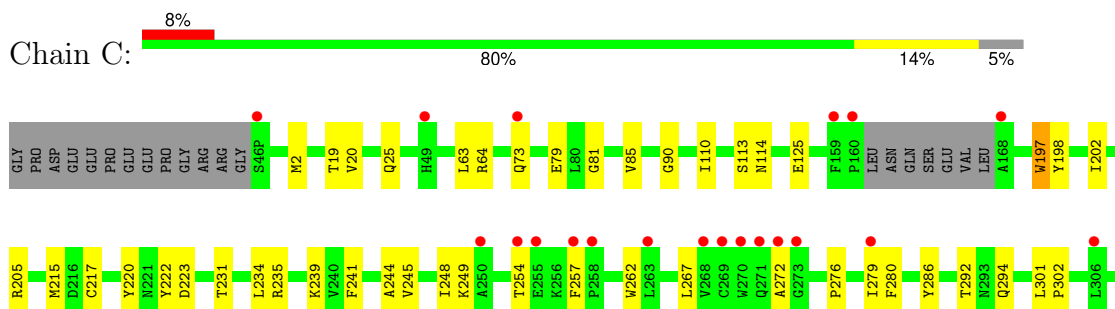
- Molecule 1: Beta-secretase 1



- Molecule 1: Beta-secretase 1



- Molecule 1: Beta-secretase 1





4 Data and refinement statistics

Property	Value	Source
Space group	P 1 21 1	Depositor
Cell constants a, b, c, α , β , γ	81.49Å 102.42Å 100.18Å 90.00° 104.45° 90.00°	Depositor
Resolution (Å)	40.22 – 2.40 40.22 – 2.40	Depositor EDS
% Data completeness (in resolution range)	99.4 (40.22-2.40) 99.5 (40.22-2.40)	Depositor EDS
R_{merge}	0.06	Depositor
R_{sym}	(Not available)	Depositor
$\langle I/\sigma(I) \rangle$ ¹	2.83 (at 2.39Å)	Xtrriage
Refinement program	CNS, CNX	Depositor
R, R_{free}	0.217 , 0.249 0.210 , 0.241	Depositor DCC
R_{free} test set	3132 reflections (5.05%)	wwPDB-VP
Wilson B-factor (Å ²)	49.0	Xtrriage
Anisotropy	0.241	Xtrriage
Bulk solvent k_{sol} (e/Å ³), B_{sol} (Å ²)	0.36 , 45.5	EDS
L-test for twinning ²	$\langle L \rangle = 0.48$, $\langle L^2 \rangle = 0.32$	Xtrriage
Estimated twinning fraction	No twinning to report.	Xtrriage
F_o, F_c correlation	0.95	EDS
Total number of atoms	9476	wwPDB-VP
Average B, all atoms (Å ²)	54.0	wwPDB-VP

Xtrriage's analysis on translational NCS is as follows: *The largest off-origin peak in the Patterson function is 4.45% of the height of the origin peak. No significant pseudotranslation is detected.*

¹Intensities estimated from amplitudes.

²Theoretical values of $\langle |L| \rangle$, $\langle L^2 \rangle$ for acentric reflections are 0.5, 0.333 respectively for untwinned datasets, and 0.375, 0.2 for perfectly twinned datasets.

5 Model quality [i](#)

5.1 Standard geometry [i](#)

Bond lengths and bond angles in the following residue types are not validated in this section: 3P5

The Z score for a bond length (or angle) is the number of standard deviations the observed value is removed from the expected value. A bond length (or angle) with $|Z| > 5$ is considered an outlier worth inspection. RMSZ is the root-mean-square of all Z scores of the bond lengths (or angles).

Mol	Chain	Bond lengths		Bond angles	
		RMSZ	# Z >5	RMSZ	# Z >5
1	A	0.33	0/3041	0.59	0/4133
1	B	0.33	0/3041	0.59	0/4133
1	C	0.33	0/3070	0.60	0/4173
All	All	0.33	0/9152	0.59	0/12439

There are no bond length outliers.

There are no bond angle outliers.

There are no chirality outliers.

There are no planarity outliers.

5.2 Too-close contacts [i](#)

In the following table, the Non-H and H(model) columns list the number of non-hydrogen atoms and hydrogen atoms in the chain respectively. The H(added) column lists the number of hydrogen atoms added and optimized by MolProbity. The Clashes column lists the number of clashes within the asymmetric unit, whereas Symm-Clashes lists symmetry-related clashes.

Mol	Chain	Non-H	H(model)	H(added)	Clashes	Symm-Clashes
1	A	2966	0	2875	36	0
1	B	2966	0	2875	39	0
1	C	2993	0	2899	41	0
2	A	29	0	26	0	0
2	B	29	0	26	1	0
2	C	29	0	26	2	0
3	A	155	0	0	2	0
3	B	133	0	0	1	0
3	C	176	0	0	5	0
All	All	9476	0	8727	115	0

The all-atom clashscore is defined as the number of clashes found per 1000 atoms (including hydrogen atoms). The all-atom clashscore for this structure is 6.

All (115) close contacts within the same asymmetric unit are listed below, sorted by their clash magnitude.

Atom-1	Atom-2	Interatomic distance (Å)	Clash overlap (Å)
1:C:202:ILE:CD1	1:C:379:MET:HG3	2.01	0.89
1:C:202:ILE:HD11	1:C:379:MET:HG3	1.69	0.74
1:C:363:ASP:HB3	1:C:366:ARG:O	1.88	0.73
1:B:267:LEU:H	1:B:267:LEU:HD23	1.59	0.67
1:C:378:ASP:HB2	3:C:505:HOH:O	1.95	0.66
1:A:254:THR:HG21	1:C:254:THR:HG21	1.76	0.65
1:B:276:PRO:O	1:B:279:ILE:HG12	1.97	0.65
1:A:2:MET:HG2	1:A:90:GLY:HA2	1.79	0.65
1:C:267:LEU:HD23	1:C:267:LEU:H	1.60	0.65
1:A:219:GLU:OE1	1:A:239:LYS:HD2	1.97	0.64
1:A:267:LEU:H	1:A:267:LEU:HD23	1.59	0.64
1:A:276:PRO:O	1:A:279:ILE:HG12	1.98	0.63
1:B:2:MET:HG2	1:B:90:GLY:HA2	1.81	0.63
1:C:323:ALA:HB1	1:C:336:VAL:HG11	1.80	0.62
1:C:276:PRO:O	1:C:279:ILE:HG12	2.00	0.61
1:B:232:THR:O	1:B:336:VAL:HG13	2.01	0.60
1:A:267:LEU:HD11	1:A:312:VAL:HG13	1.84	0.59
1:B:267:LEU:HD11	1:B:312:VAL:HG13	1.85	0.59
1:C:2:MET:HG2	1:C:90:GLY:HA2	1.85	0.59
1:C:267:LEU:HD11	1:C:312:VAL:HG13	1.83	0.59
1:A:65:LYS:HE2	1:A:129:PRO:HG3	1.83	0.58
1:B:235:ARG:HB3	1:B:327:SER:HB2	1.86	0.58
1:A:303:GLN:HB2	1:A:361:VAL:HG11	1.86	0.58
1:C:79:GLU:HB3	3:C:404:HOH:O	2.03	0.58
1:B:244:ALA:O	1:B:248:ILE:HG13	2.05	0.56
1:C:292:THR:HG21	1:C:378:ASP:HB3	1.89	0.54
1:A:75:LYS:HD2	1:B:48(P):VAL:O	2.08	0.53
1:C:125:GLU:HG2	1:C:197:TRP:HB3	1.89	0.53
1:B:290:GLU:HG2	3:B:502:HOH:O	2.08	0.53
1:C:235:ARG:HB2	1:C:332:VAL:HB	1.91	0.52
1:A:20:VAL:HG12	1:A:85:VAL:HG22	1.92	0.52
1:A:73:GLN:HB2	3:A:410:HOH:O	2.10	0.51
1:C:202:ILE:HD12	1:C:379:MET:HE2	1.92	0.51
1:C:235:ARG:HB3	1:C:327:SER:HB2	1.91	0.51
1:C:73:GLN:HB2	3:C:402:HOH:O	2.10	0.51
1:A:235:ARG:HB3	1:A:327:SER:HB2	1.93	0.51
1:A:244:ALA:O	1:A:248:ILE:HG13	2.11	0.50

Continued on next page...

Continued from previous page...

Atom-1	Atom-2	Interatomic distance (Å)	Clash overlap (Å)
1:C:63:LEU:HG	1:C:81:GLY:HA2	1.93	0.50
1:A:323:ALA:HB1	1:A:336:VAL:HG11	1.93	0.50
1:B:301:LEU:HD11	1:B:367:THR:HA	1.93	0.50
1:A:300:ILE:HG13	1:A:337:ILE:HD13	1.93	0.50
1:B:154:LEU:O	1:B:339:GLU:HA	2.11	0.50
1:A:235:ARG:HB2	1:A:332:VAL:HB	1.95	0.49
1:B:300:ILE:HG13	1:B:337:ILE:HD13	1.94	0.49
1:B:323:ALA:HB1	1:B:336:VAL:HG11	1.95	0.49
1:C:301:LEU:HD12	1:C:361:VAL:HG23	1.95	0.49
1:C:110:ILE:HB	1:C:113:SER:HB3	1.95	0.48
1:A:232:THR:O	1:A:336:VAL:HG13	2.13	0.48
1:B:235:ARG:HB2	1:B:332:VAL:HB	1.96	0.48
1:B:340:GLY:HA2	1:B:360:HIS:HA	1.95	0.48
1:B:20:VAL:HG12	1:B:85:VAL:HG22	1.96	0.47
1:C:249:LYS:HE2	1:C:262:TRP:CD1	2.49	0.47
1:C:64:ARG:HG2	1:C:64:ARG:HH11	1.80	0.47
1:B:8:GLY:C	1:B:170:VAL:HG22	2.36	0.46
1:A:208:ILE:HD12	1:A:213:LEU:HD21	1.97	0.46
1:A:63:LEU:HG	1:A:81:GLY:HA2	1.97	0.46
1:B:110:ILE:HB	1:B:113:SER:HB3	1.97	0.46
2:C:387:3P5:H4	3:C:563:HOH:O	2.16	0.46
1:C:301:LEU:HD11	1:C:367:THR:HA	1.97	0.46
1:A:110:ILE:HB	1:A:113:SER:HB3	1.96	0.45
1:B:233:ASN:HB3	1:B:323:ALA:O	2.15	0.45
1:A:233:ASN:HB3	1:A:323:ALA:O	2.15	0.45
1:B:63:LEU:HG	1:B:81:GLY:HA2	1.99	0.45
1:C:222:TYR:HA	1:C:223:ASP:HA	1.63	0.45
1:B:8:GLY:O	1:B:170:VAL:HG22	2.17	0.45
1:C:205:ARG:HB3	1:C:286:TYR:HB2	1.98	0.45
1:C:231:THR:OG1	2:C:387:3P5:H20	2.17	0.45
1:A:290:GLU:HG2	3:A:514:HOH:O	2.16	0.45
1:C:125:GLU:HG2	1:C:197:TRP:CB	2.47	0.44
1:B:249:LYS:HE2	1:B:262:TRP:CD1	2.52	0.44
1:B:267:LEU:HD23	1:B:267:LEU:N	2.30	0.44
1:C:241:PHE:O	1:C:245:VAL:HG23	2.17	0.44
1:C:244:ALA:O	1:C:248:ILE:HG13	2.18	0.44
1:B:19:THR:HA	1:B:25:GLN:O	2.18	0.44
1:C:197:TRP:CG	1:C:198:TYR:N	2.85	0.44
1:A:249:LYS:HE2	1:A:262:TRP:CD1	2.53	0.44
1:A:280:PHE:HB3	1:A:302:PRO:HB3	2.00	0.43
1:C:323:ALA:CB	1:C:336:VAL:HG11	2.46	0.43

Continued on next page...

Continued from previous page...

Atom-1	Atom-2	Interatomic distance (Å)	Clash overlap (Å)
1:B:231:THR:OG1	2:B:387:3P5:H20	2.17	0.43
1:B:215:MET:HE3	1:B:239:LYS:HE3	2.01	0.43
1:C:125:GLU:HB3	1:C:197:TRP:HA	2.00	0.43
1:A:222:TYR:HA	1:A:223:ASP:HA	1.64	0.43
1:B:23:PRO:HA	1:B:24:PRO:HD3	1.90	0.43
1:B:197:TRP:CG	1:B:198:TYR:N	2.87	0.43
1:A:197:TRP:CG	1:A:198:TYR:N	2.87	0.42
1:B:241:PHE:O	1:B:245:VAL:HG23	2.19	0.42
1:B:280:PHE:HB3	1:B:302:PRO:HB3	2.00	0.42
1:B:302:PRO:HA	1:B:305:TYR:CE2	2.54	0.42
1:C:267:LEU:C	3:C:464:HOH:O	2.58	0.42
1:A:300:ILE:HG13	1:A:337:ILE:CD1	2.49	0.42
1:B:222:TYR:HA	1:B:223:ASP:HA	1.60	0.42
1:C:217:CYS:HA	1:C:220:TYR:CD1	2.54	0.42
1:A:302:PRO:HA	1:A:305:TYR:CE2	2.55	0.41
1:A:114:ASN:HD22	1:A:114:ASN:HA	1.69	0.41
1:B:45:HIS:HA	1:B:46:PRO:HD3	1.93	0.41
1:A:241:PHE:O	1:A:245:VAL:HG23	2.20	0.41
1:A:282:VAL:HG12	1:A:301:LEU:HD23	2.02	0.41
1:C:20:VAL:HG12	1:C:85:VAL:HG22	2.01	0.41
1:C:19:THR:HA	1:C:25:GLN:O	2.21	0.41
1:A:361:VAL:HG12	1:A:362:HIS:H	1.85	0.41
1:C:215:MET:HE3	1:C:239:LYS:HE3	2.03	0.41
1:C:280:PHE:HB3	1:C:302:PRO:HB3	2.03	0.41
1:B:114:ASN:HD22	1:B:114:ASN:HA	1.70	0.41
1:B:238:LYS:O	1:B:242:GLU:HG3	2.20	0.41
1:C:234:LEU:HD22	1:C:337:ILE:HD11	2.03	0.41
1:C:245:VAL:HG12	1:C:249:LYS:HE3	2.03	0.41
1:C:267:LEU:HD23	1:C:267:LEU:N	2.31	0.41
1:A:45:HIS:HA	1:A:46:PRO:HD3	1.95	0.41
1:A:19:THR:HA	1:A:25:GLN:O	2.20	0.40
1:A:28:ASN:HB2	1:A:115:TRP:HA	2.03	0.40
1:A:303:GLN:CB	1:A:361:VAL:HG11	2.51	0.40
1:B:134:GLU:HA	1:B:135:PRO:HD3	1.89	0.40
1:B:125:GLU:HG3	1:B:125:GLU:O	2.21	0.40
1:B:149:LEU:HB2	1:B:346:ASP:HA	2.04	0.40
1:B:238:LYS:HG3	1:B:326:GLN:OE1	2.22	0.40

There are no symmetry-related clashes.

5.3 Torsion angles [i](#)

5.3.1 Protein backbone [i](#)

In the following table, the Percentiles column shows the percent Ramachandran outliers of the chain as a percentile score with respect to all X-ray entries followed by that with respect to entries of similar resolution.

The Analysed column shows the number of residues for which the backbone conformation was analysed, and the total number of residues.

Mol	Chain	Analysed	Favoured	Allowed	Outliers	Percentiles	
1	A	373/402 (93%)	356 (95%)	15 (4%)	2 (0%)	25	38
1	B	373/402 (93%)	355 (95%)	17 (5%)	1 (0%)	37	51
1	C	377/402 (94%)	359 (95%)	17 (4%)	1 (0%)	37	51
All	All	1123/1206 (93%)	1070 (95%)	49 (4%)	4 (0%)	30	44

All (4) Ramachandran outliers are listed below:

Mol	Chain	Res	Type
1	A	272	ALA
1	B	272	ALA
1	C	272	ALA
1	A	70	PRO

5.3.2 Protein sidechains [i](#)

In the following table, the Percentiles column shows the percent sidechain outliers of the chain as a percentile score with respect to all X-ray entries followed by that with respect to entries of similar resolution.

The Analysed column shows the number of residues for which the sidechain conformation was analysed, and the total number of residues.

Mol	Chain	Analysed	Rotameric	Outliers	Percentiles	
1	A	322/342 (94%)	318 (99%)	4 (1%)	67	82
1	B	322/342 (94%)	319 (99%)	3 (1%)	75	88
1	C	324/342 (95%)	319 (98%)	5 (2%)	60	77
All	All	968/1026 (94%)	956 (99%)	12 (1%)	67	82

All (12) residues with a non-rotameric sidechain are listed below:

Mol	Chain	Res	Type
1	A	114	ASN
1	A	197	TRP
1	A	211	GLN
1	A	257	PHE
1	B	114	ASN
1	B	197	TRP
1	B	257	PHE
1	C	114	ASN
1	C	197	TRP
1	C	257	PHE
1	C	294	GLN
1	C	362	HIS

Sometimes sidechains can be flipped to improve hydrogen bonding and reduce clashes. All (4) such sidechains are listed below:

Mol	Chain	Res	Type
1	A	114	ASN
1	B	114	ASN
1	B	293	ASN
1	C	114	ASN

5.3.3 RNA [i](#)

There are no RNA molecules in this entry.

5.4 Non-standard residues in protein, DNA, RNA chains [i](#)

There are no non-standard protein/DNA/RNA residues in this entry.

5.5 Carbohydrates [i](#)

There are no oligosaccharides in this entry.

5.6 Ligand geometry [i](#)

3 ligands are modelled in this entry.

In the following table, the Counts columns list the number of bonds (or angles) for which Mogul statistics could be retrieved, the number of bonds (or angles) that are observed in the model and the number of bonds (or angles) that are defined in the Chemical Component Dictionary. The

Link column lists molecule types, if any, to which the group is linked. The Z score for a bond length (or angle) is the number of standard deviations the observed value is removed from the expected value. A bond length (or angle) with $|Z| > 2$ is considered an outlier worth inspection. RMSZ is the root-mean-square of all Z scores of the bond lengths (or angles).

Mol	Type	Chain	Res	Link	Bond lengths			Bond angles		
					Counts	RMSZ	# Z > 2	Counts	RMSZ	# Z > 2
2	3P5	A	387	-	30,32,32	1.90	4 (13%)	39,47,47	1.95	4 (10%)
2	3P5	B	387	-	30,32,32	1.47	3 (10%)	39,47,47	1.93	4 (10%)
2	3P5	C	387	-	30,32,32	1.68	2 (6%)	39,47,47	1.92	4 (10%)

In the following table, the Chirals column lists the number of chiral outliers, the number of chiral centers analysed, the number of these observed in the model and the number defined in the Chemical Component Dictionary. Similar counts are reported in the Torsion and Rings columns. '2' means no outliers of that kind were identified.

Mol	Type	Chain	Res	Link	Chirals	Torsions	Rings
2	3P5	A	387	-	-	0/13/33/33	0/4/4/4
2	3P5	B	387	-	-	0/13/33/33	0/4/4/4
2	3P5	C	387	-	-	0/13/33/33	0/4/4/4

All (9) bond length outliers are listed below:

Mol	Chain	Res	Type	Atoms	Z	Observed(Å)	Ideal(Å)
2	A	387	3P5	C24-S23	8.09	1.84	1.77
2	C	387	3P5	C24-S23	6.75	1.83	1.77
2	B	387	3P5	C24-S23	4.05	1.80	1.77
2	B	387	3P5	C20-S23	3.75	1.80	1.77
2	A	387	3P5	C20-S23	2.73	1.79	1.77
2	C	387	3P5	C20-S23	2.25	1.79	1.77
2	A	387	3P5	C35-C37	2.20	1.42	1.39
2	B	387	3P5	C31-C34	2.18	1.56	1.51
2	A	387	3P5	C11-C14	2.04	1.56	1.53

All (12) bond angle outliers are listed below:

Mol	Chain	Res	Type	Atoms	Z	Observed(°)	Ideal(°)
2	A	387	3P5	C49-C44-C37	-7.62	110.86	121.28
2	C	387	3P5	C49-C44-C37	-7.49	111.05	121.28
2	B	387	3P5	C49-C44-C37	-7.45	111.11	121.28
2	C	387	3P5	C46-C44-C37	-7.17	111.49	121.28
2	A	387	3P5	C46-C44-C37	-7.16	111.50	121.28
2	B	387	3P5	C46-C44-C37	-7.04	111.66	121.28
2	A	387	3P5	C8-C11-C14	-2.34	109.96	113.61

Continued on next page...

Continued from previous page...

Mol	Chain	Res	Type	Atoms	Z	Observed(°)	Ideal(°)
2	B	387	3P5	C8-C11-C14	-2.30	110.02	113.61
2	C	387	3P5	C8-C11-C14	-2.26	110.08	113.61
2	A	387	3P5	C38-C37-C44	-2.10	115.77	121.09
2	B	387	3P5	C4-C3-C2	2.02	119.59	118.07
2	C	387	3P5	C38-C37-C44	-2.01	115.99	121.09

There are no chirality outliers.

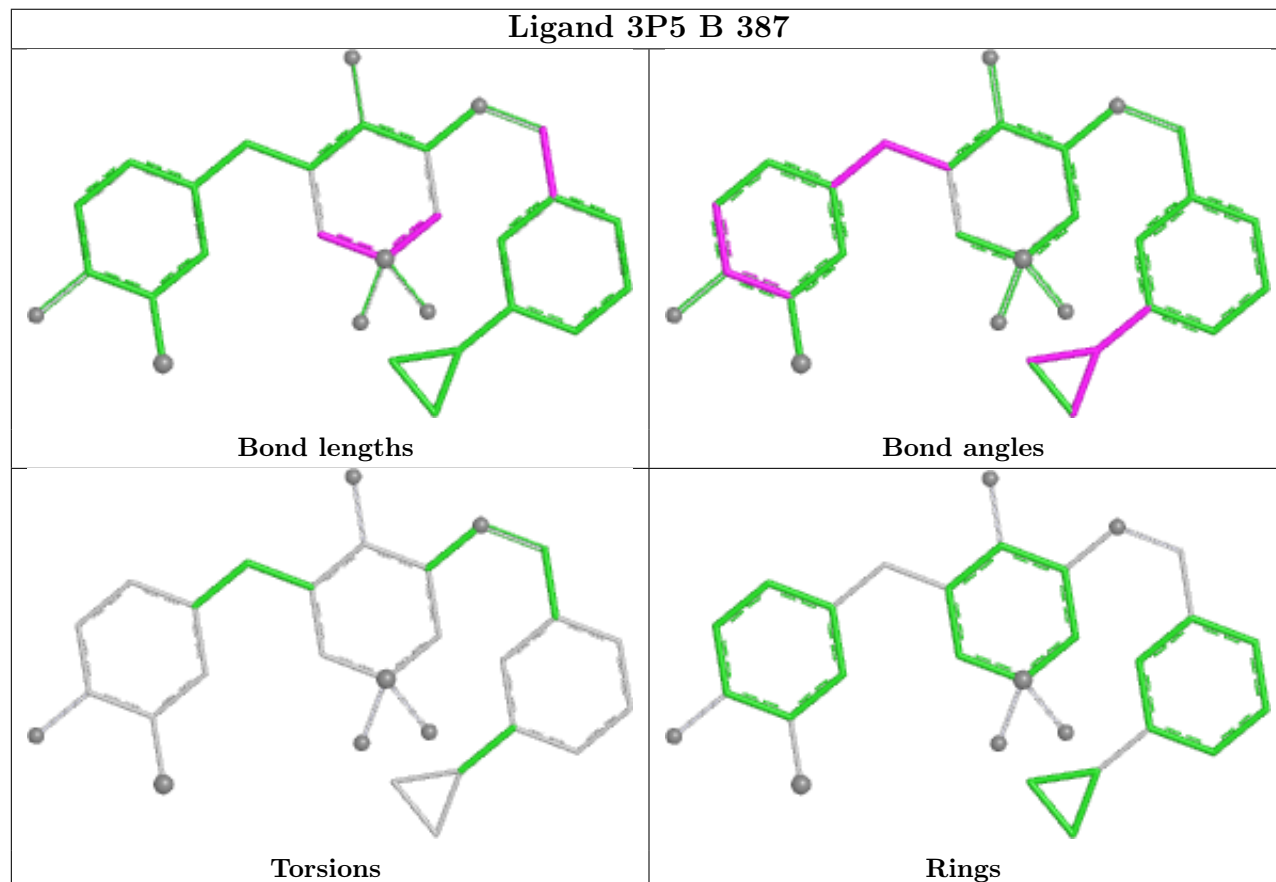
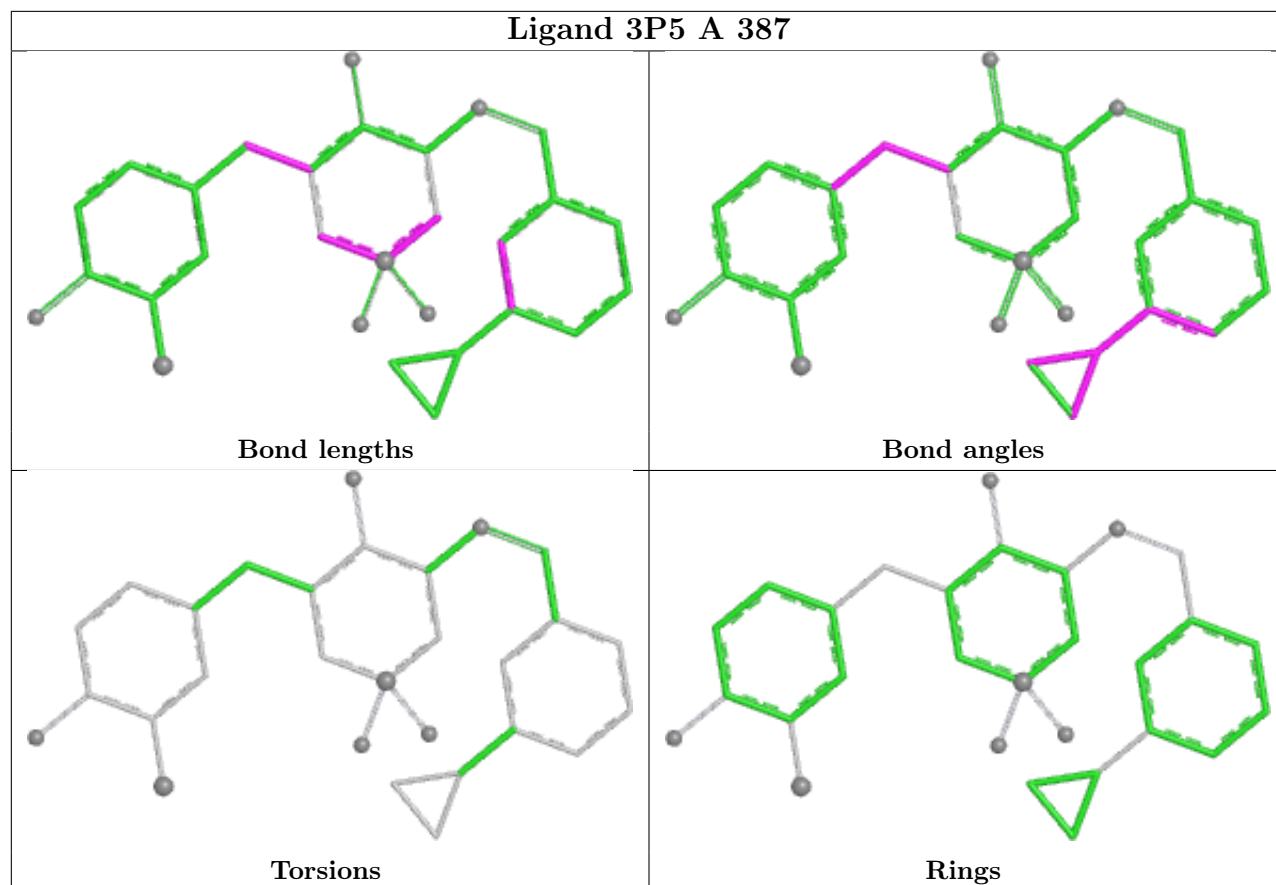
There are no torsion outliers.

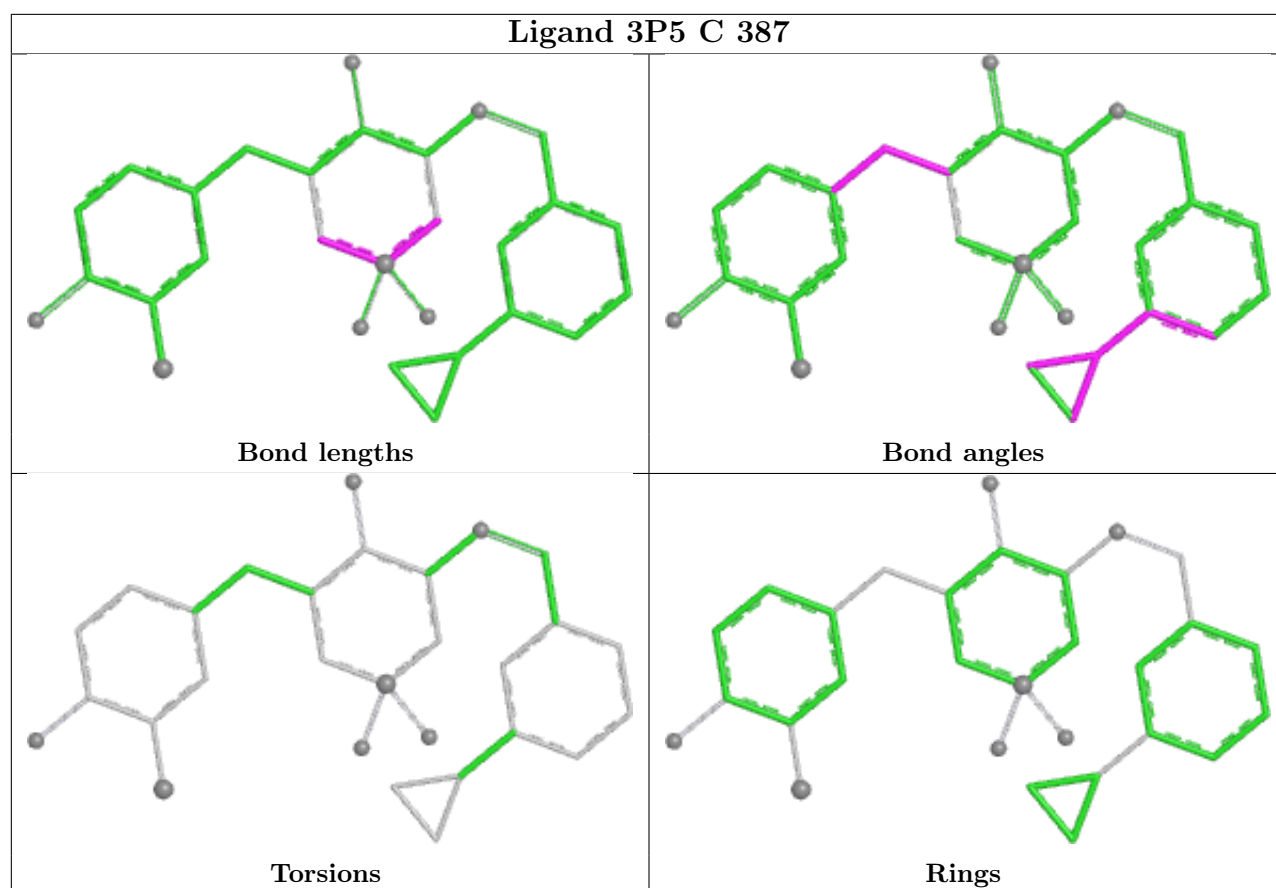
There are no ring outliers.

2 monomers are involved in 3 short contacts:

Mol	Chain	Res	Type	Clashes	Symm-Clashes
2	B	387	3P5	1	0
2	C	387	3P5	2	0

The following is a two-dimensional graphical depiction of Mogul quality analysis of bond lengths, bond angles, torsion angles, and ring geometry for all instances of the Ligand of Interest. In addition, ligands with molecular weight > 250 and outliers as shown on the validation Tables will also be included. For torsion angles, if less than 5% of the Mogul distribution of torsion angles is within 10 degrees of the torsion angle in question, then that torsion angle is considered an outlier. Any bond that is central to one or more torsion angles identified as an outlier by Mogul will be highlighted in the graph. For rings, the root-mean-square deviation (RMSD) between the ring in question and similar rings identified by Mogul is calculated over all ring torsion angles. If the average RMSD is greater than 60 degrees and the minimal RMSD between the ring in question and any Mogul-identified rings is also greater than 60 degrees, then that ring is considered an outlier. The outliers are highlighted in purple. The color gray indicates Mogul did not find sufficient equivalents in the CSD to analyse the geometry.





5.7 Other polymers [\(i\)](#)

There are no such residues in this entry.

5.8 Polymer linkage issues [\(i\)](#)

There are no chain breaks in this entry.

6 Fit of model and data

6.1 Protein, DNA and RNA chains

In the following table, the column labelled ‘#RSRZ > 2’ contains the number (and percentage) of RSRZ outliers, followed by percent RSRZ outliers for the chain as percentile scores relative to all X-ray entries and entries of similar resolution. The OWAB column contains the minimum, median, 95th percentile and maximum values of the occupancy-weighted average B-factor per residue. The column labelled ‘Q < 0.9’ lists the number of (and percentage) of residues with an average occupancy less than 0.9.

Mol	Chain	Analysed	<RSRZ>	#RSRZ>2	OWAB(Å ²)	Q<0.9
1	A	377/402 (93%)	0.21	25 (6%) 26 23	31, 51, 91, 125	0
1	B	377/402 (93%)	0.38	36 (9%) 15 13	28, 52, 93, 126	0
1	C	381/402 (94%)	0.34	32 (8%) 18 17	32, 51, 93, 125	0
All	All	1135/1206 (94%)	0.31	93 (8%) 19 17	28, 51, 93, 126	0

All (93) RSRZ outliers are listed below:

Mol	Chain	Res	Type	RSRZ
1	B	361	VAL	5.3
1	A	258	PRO	5.0
1	B	312	VAL	5.0
1	C	254	THR	4.9
1	B	313	ALA	4.9
1	B	314	THR	4.4
1	C	314	THR	4.3
1	B	272	ALA	4.3
1	C	312	VAL	4.1
1	B	360	HIS	4.0
1	C	272	ALA	4.0
1	A	312	VAL	4.0
1	C	168	ALA	3.8
1	A	365	PHE	3.7
1	C	313	ALA	3.6
1	B	258	PRO	3.5
1	C	269	CYS	3.5
1	B	340	GLY	3.5
1	C	258	PRO	3.4
1	B	319	CYS	3.3
1	B	267	LEU	3.2
1	B	315	SER	3.2
1	B	309	VAL	3.2

Continued on next page...

Continued from previous page...

Mol	Chain	Res	Type	RSRZ
1	A	254	THR	3.2
1	A	272	ALA	3.1
1	C	279	ILE	3.1
1	B	266	GLN	3.1
1	A	266	GLN	3.0
1	B	46(P)	SER	2.9
1	C	160	PRO	2.9
1	C	257	PHE	2.9
1	C	159	PHE	2.9
1	B	256	LYS	2.9
1	C	271	GLN	2.8
1	A	259	ASP	2.8
1	B	277	TRP	2.8
1	C	362	HIS	2.8
1	C	365	PHE	2.8
1	B	311	ASP	2.7
1	B	316	GLN	2.7
1	C	49	HIS	2.7
1	A	169	SER	2.7
1	C	315	SER	2.7
1	C	273	GLY	2.7
1	A	278	ASN	2.6
1	B	278	ASN	2.6
1	B	273	GLY	2.6
1	C	270	TRP	2.5
1	B	260	GLY	2.5
1	A	49	HIS	2.5
1	B	270	TRP	2.5
1	B	51	TYR	2.5
1	B	257	PHE	2.5
1	A	267	LEU	2.4
1	C	310	GLU	2.4
1	A	317	ASP	2.4
1	A	263	LEU	2.4
1	B	253	SER	2.4
1	A	361	VAL	2.4
1	B	169	SER	2.4
1	B	317	ASP	2.4
1	A	313	ALA	2.4
1	B	73	GLN	2.4
1	A	270	TRP	2.4
1	A	316	GLN	2.3

Continued on next page...

Continued from previous page...

Mol	Chain	Res	Type	RSRZ
1	A	256	LYS	2.3
1	C	306	LEU	2.3
1	A	311	ASP	2.3
1	A	265	GLU	2.3
1	C	73	GLN	2.3
1	B	49	HIS	2.3
1	C	317	ASP	2.3
1	C	255	GLU	2.3
1	C	263	LEU	2.2
1	C	321	LYS	2.2
1	A	309	VAL	2.2
1	C	250	ALA	2.2
1	A	257	PHE	2.2
1	B	255	GLU	2.2
1	A	269	CYS	2.2
1	C	46(P)	SER	2.2
1	A	46(P)	SER	2.2
1	B	359	CYS	2.2
1	C	361	VAL	2.2
1	A	362	HIS	2.2
1	B	262	TRP	2.1
1	C	268	VAL	2.1
1	C	320	TYR	2.1
1	B	254	THR	2.1
1	B	252	SER	2.1
1	B	276	PRO	2.1
1	C	380	GLU	2.1
1	B	157	ALA	2.0

6.2 Non-standard residues in protein, DNA, RNA chains [i](#)

There are no non-standard protein/DNA/RNA residues in this entry.

6.3 Carbohydrates [i](#)

There are no monosaccharides in this entry.

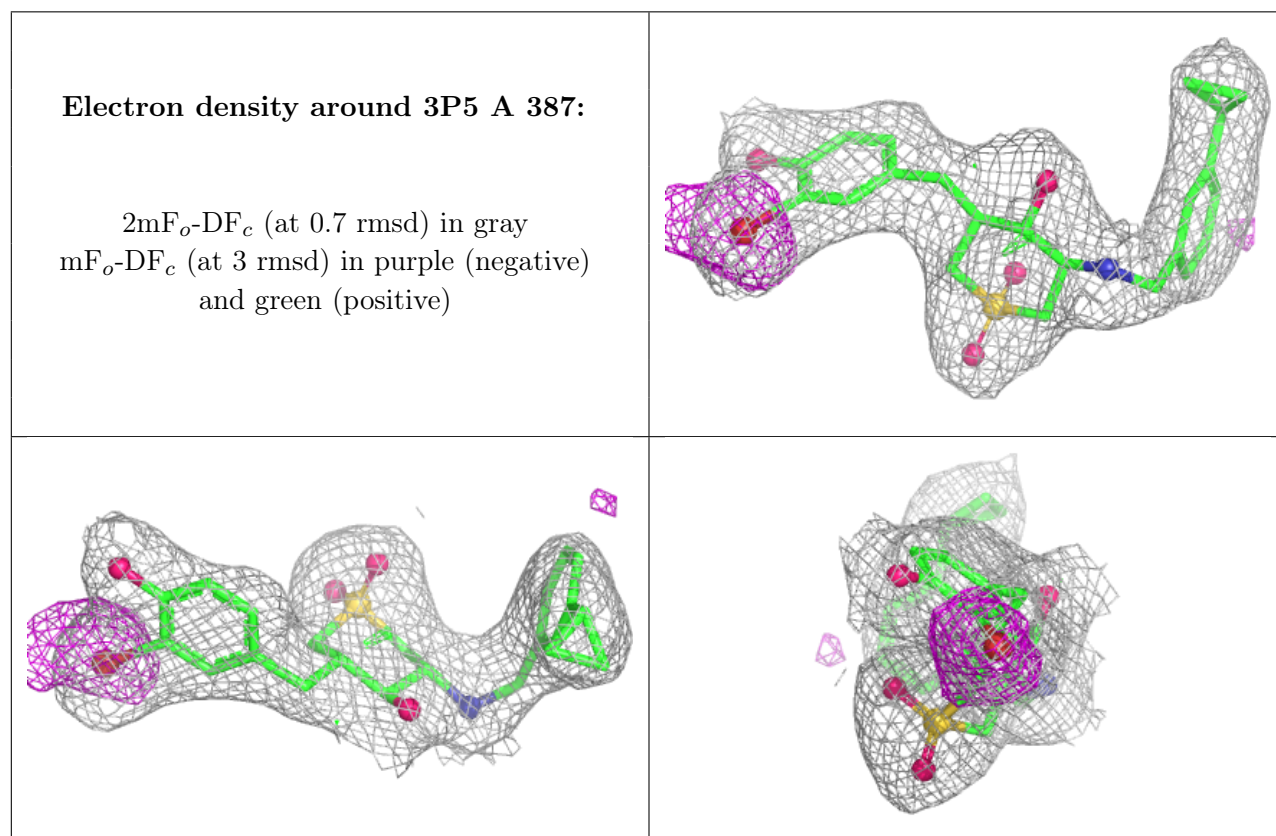
6.4 Ligands [i](#)

In the following table, the Atoms column lists the number of modelled atoms in the group and the number defined in the chemical component dictionary. The B-factors column lists the minimum,

median, 95th percentile and maximum values of B factors of atoms in the group. The column labelled 'Q< 0.9' lists the number of atoms with occupancy less than 0.9.

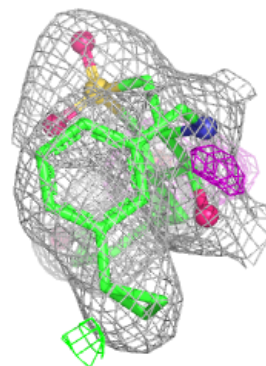
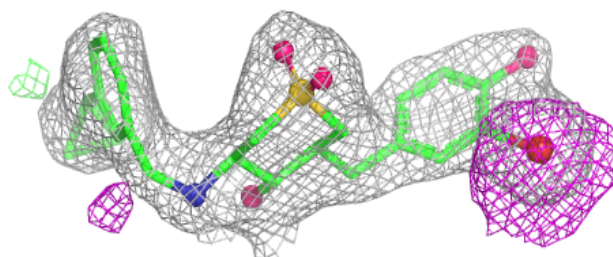
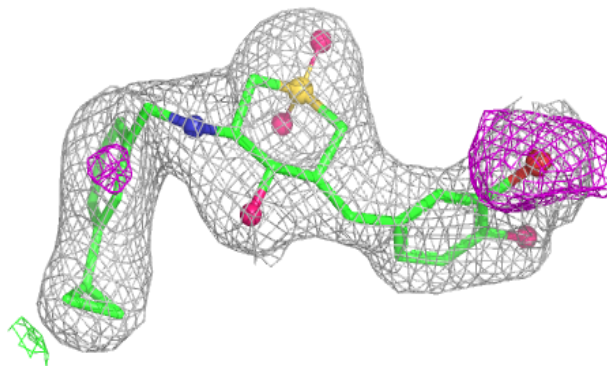
Mol	Type	Chain	Res	Atoms	RSCC	RSR	B-factors(Å ²)	Q<0.9
2	3P5	A	387	29/29	0.94	0.10	37,45,54,76	0
2	3P5	B	387	29/29	0.94	0.10	37,47,57,72	0
2	3P5	C	387	29/29	0.96	0.08	35,46,55,76	0

The following is a graphical depiction of the model fit to experimental electron density of all instances of the Ligand of Interest. In addition, ligands with molecular weight > 250 and outliers as shown on the geometry validation Tables will also be included. Each fit is shown from different orientation to approximate a three-dimensional view.

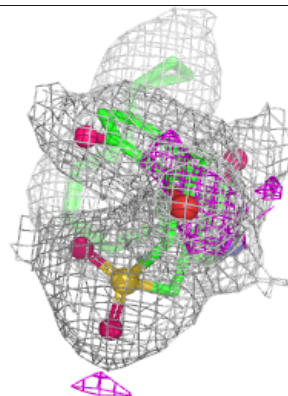
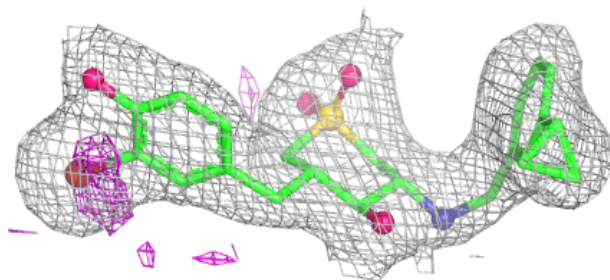
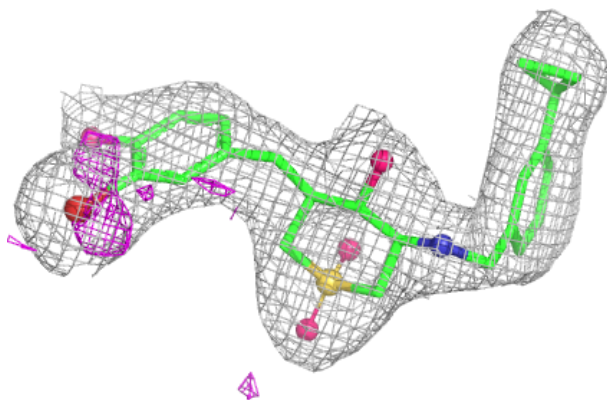


Electron density around 3P5 B 387:

$2mF_o-DF_c$ (at 0.7 rmsd) in gray
 mF_o-DF_c (at 3 rmsd) in purple (negative)
and green (positive)

**Electron density around 3P5 C 387:**

$2mF_o-DF_c$ (at 0.7 rmsd) in gray
 mF_o-DF_c (at 3 rmsd) in purple (negative)
and green (positive)



6.5 Other polymers [i](#)

There are no such residues in this entry.