



# Full wwPDB X-ray Structure Validation Report ⓘ

Dec 6, 2023 – 10:38 pm GMT

PDB ID : 8PKU  
Title : Kelch domain of KEAP1 in complex with ortho-dimethylbenzene linked cyclic peptide 3 (ortho-WRCDEETGEC).  
Authors : Braun, M.B.; Bischof, L.; Hartmann, M.D.  
Deposited on : 2023-06-27  
Resolution : 1.73 Å(reported)

This is a Full wwPDB X-ray Structure Validation Report for a publicly released PDB entry.

We welcome your comments at [validation@mail.wwpdb.org](mailto:validation@mail.wwpdb.org)

A user guide is available at

<https://www.wwpdb.org/validation/2017/XrayValidationReportHelp>

with specific help available everywhere you see the ⓘ symbol.

The types of validation reports are described at

<http://www.wwpdb.org/validation/2017/FAQs#types>.

---

The following versions of software and data (see [references ⓘ](#)) were used in the production of this report:

MolProbity : 4.02b-467  
Mogul : 1.8.4, CSD as541be (2020)  
Xtriage (Phenix) : 1.13  
EDS : 2.36  
buster-report : 1.1.7 (2018)  
Percentile statistics : 20191225.v01 (using entries in the PDB archive December 25th 2019)  
Refmac : 5.8.0158  
CCP4 : 7.0.044 (Gargrove)  
Ideal geometry (proteins) : Engh & Huber (2001)  
Ideal geometry (DNA, RNA) : Parkinson et al. (1996)  
Validation Pipeline (wwPDB-VP) : 2.36

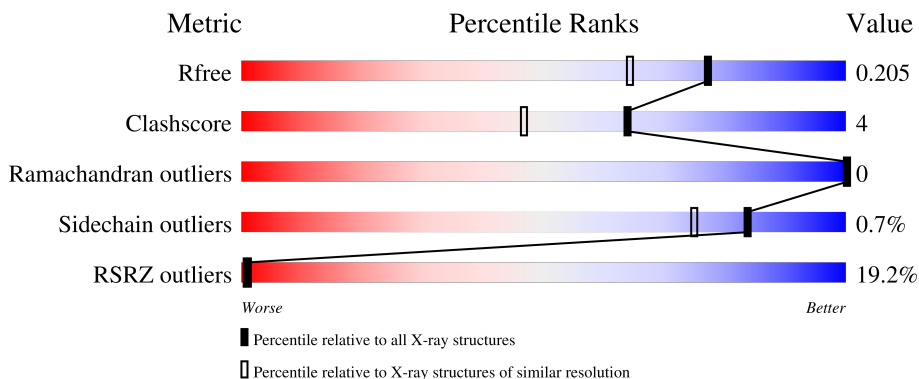
# 1 Overall quality at a glance

The following experimental techniques were used to determine the structure:

*X-RAY DIFFRACTION*

The reported resolution of this entry is 1.73 Å.

Percentile scores (ranging between 0-100) for global validation metrics of the entry are shown in the following graphic. The table shows the number of entries on which the scores are based.



Metric	Whole archive (#Entries)	Similar resolution (#Entries, resolution range(Å))
$R_{free}$	130704	3764 (1.76-1.72)
Clashscore	141614	3923 (1.76-1.72)
Ramachandran outliers	138981	3878 (1.76-1.72)
Sidechain outliers	138945	3878 (1.76-1.72)
RSRZ outliers	127900	3705 (1.76-1.72)

The table below summarises the geometric issues observed across the polymeric chains and their fit to the electron density. The red, orange, yellow and green segments of the lower bar indicate the fraction of residues that contain outliers for  $\geq 3$ , 2, 1 and 0 types of geometric quality criteria respectively. A grey segment represents the fraction of residues that are not modelled. The numeric value for each fraction is indicated below the corresponding segment, with a dot representing fractions  $\leq 5\%$ . The upper red bar (where present) indicates the fraction of residues that have poor fit to the electron density. The numeric value is given above the bar.

Mol	Chain	Length	Quality of chain
1	A	316	
1	B	316	
2	P	12	

The following table lists non-polymeric compounds, carbohydrate monomers and non-standard residues in protein, DNA, RNA chains that are outliers for geometric or electron-density-fit criteria:

Mol	Type	Chain	Res	Chirality	Geometry	Clashes	Electron density
7	ZK2	P	101	-	-	-	X

## 2 Entry composition

There are 8 unique types of molecules in this entry. The entry contains 4933 atoms, of which 0 are hydrogens and 0 are deuteriums.

In the tables below, the ZeroOcc column contains the number of atoms modelled with zero occupancy, the AltConf column contains the number of residues with at least one atom in alternate conformation and the Trace column contains the number of residues modelled with at most 2 atoms.

- Molecule 1 is a protein called Kelch-like ECH-associated protein 1.

Mol	Chain	Residues	Atoms					ZeroOcc	AltConf	Trace
			Total	C	N	O	S			
1	A	290	2363	1470	431	442	20	0	21	0
1	B	288	2137	1331	389	402	15	0	5	0

There are 18 discrepancies between the modelled and reference sequences:

Chain	Residue	Modelled	Actual	Comment	Reference
A	309	GLY	-	expression tag	UNP Q14145
A	310	HIS	-	expression tag	UNP Q14145
A	311	MET	-	expression tag	UNP Q14145
A	319	SER	CYS	conflict	UNP Q14145
A	540	ALA	GLU	conflict	UNP Q14145
A	542	ALA	GLU	conflict	UNP Q14145
A	613	SER	CYS	conflict	UNP Q14145
A	622	SER	CYS	conflict	UNP Q14145
A	624	SER	-	expression tag	UNP Q14145
B	309	GLY	-	expression tag	UNP Q14145
B	310	HIS	-	expression tag	UNP Q14145
B	311	MET	-	expression tag	UNP Q14145
B	319	SER	CYS	conflict	UNP Q14145
B	540	ALA	GLU	conflict	UNP Q14145
B	542	ALA	GLU	conflict	UNP Q14145
B	613	SER	CYS	conflict	UNP Q14145
B	622	SER	CYS	conflict	UNP Q14145
B	624	SER	-	expression tag	UNP Q14145

- Molecule 2 is a protein called CP3.

Mol	Chain	Residues	Atoms					ZeroOcc	AltConf	Trace
			Total	C	N	O	S			
2	P	11	78	42	14	19	3	0	1	1

- Molecule 3 is SULFATE ION (three-letter code: SO4) (formula: O<sub>4</sub>S).



Mol	Chain	Residues	Atoms	ZeroOcc	AltConf
3	A	1	Total O S 5 4 1	0	0
3	A	1	Total O S 5 4 1	0	0
3	A	1	Total O S 5 4 1	0	0
3	A	1	Total O S 5 4 1	0	0
3	B	1	Total O S 5 4 1	0	0

- Molecule 4 is CHLORIDE ION (three-letter code: CL) (formula: Cl).

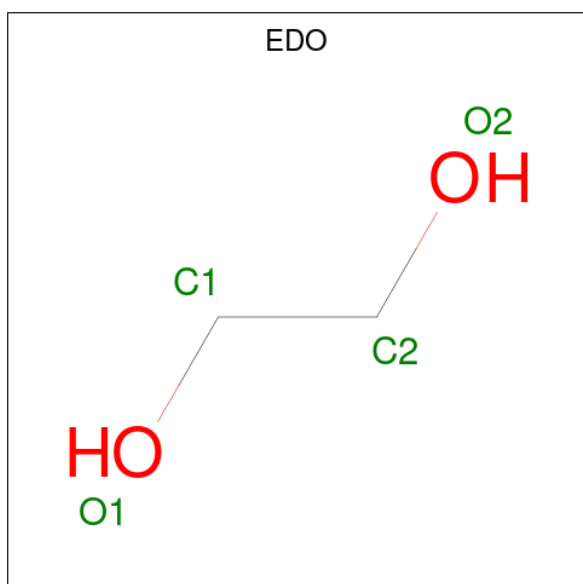
Mol	Chain	Residues	Atoms	ZeroOcc	AltConf
4	A	1	Total Cl 1 1	0	0

- Molecule 5 is GLYCEROL (three-letter code: GOL) (formula: C<sub>3</sub>H<sub>8</sub>O<sub>3</sub>).



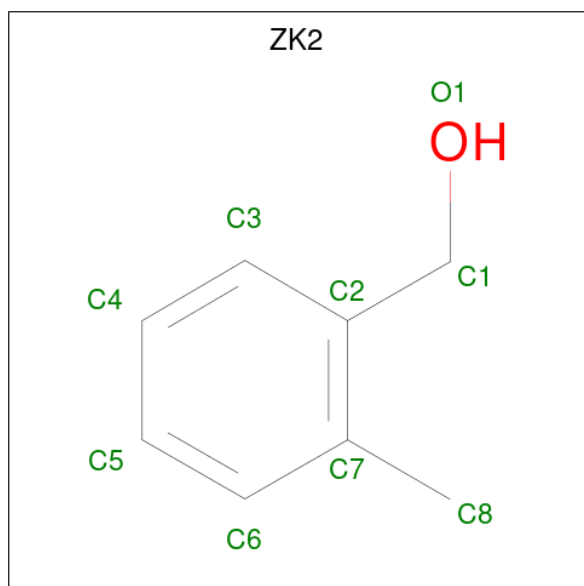
Mol	Chain	Residues	Atoms	ZeroOcc	AltConf
5	A	1	Total C O 6 3 3	0	0
5	A	1	Total C O 6 3 3	0	0
5	B	1	Total C O 6 3 3	0	0
5	B	1	Total C O 6 3 3	0	0
5	B	1	Total C O 6 3 3	0	0

- Molecule 6 is 1,2-ETHANEDIOL (three-letter code: EDO) (formula: C<sub>2</sub>H<sub>6</sub>O<sub>2</sub>).



Mol	Chain	Residues	Atoms	ZeroOcc	AltConf
6	A	1	Total C O 4 2 2	0	0
6	A	1	Total C O 4 2 2	0	0
6	A	1	Total C O 4 2 2	0	0
6	A	1	Total C O 4 2 2	0	0
6	A	1	Total C O 4 2 2	0	0
6	B	1	Total C O 4 2 2	0	0
6	B	1	Total C O 4 2 2	0	0
6	B	1	Total C O 4 2 2	0	0

- Molecule 7 is (2-methylphenyl)methanol (three-letter code: ZK2) (formula: C<sub>8</sub>H<sub>10</sub>O) (labeled as "Ligand of Interest" by depositor).



Mol	Chain	Residues	Atoms	ZeroOcc	AltConf
7	P	1	Total C 8 8	0	0

- Molecule 8 is water.

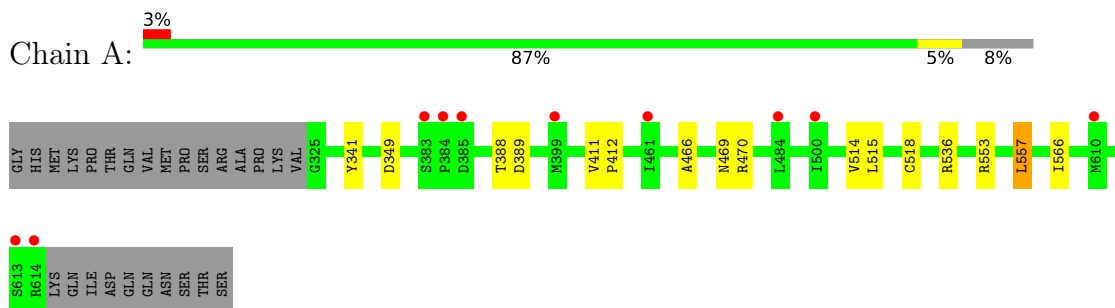
<b>Mol</b>	<b>Chain</b>	<b>Residues</b>	<b>Atoms</b>		<b>ZeroOcc</b>	<b>AltConf</b>
8	A	194	Total 194	O 194	0	0
8	B	62	Total 62	O 62	0	0
8	P	3	Total 3	O 3	0	0



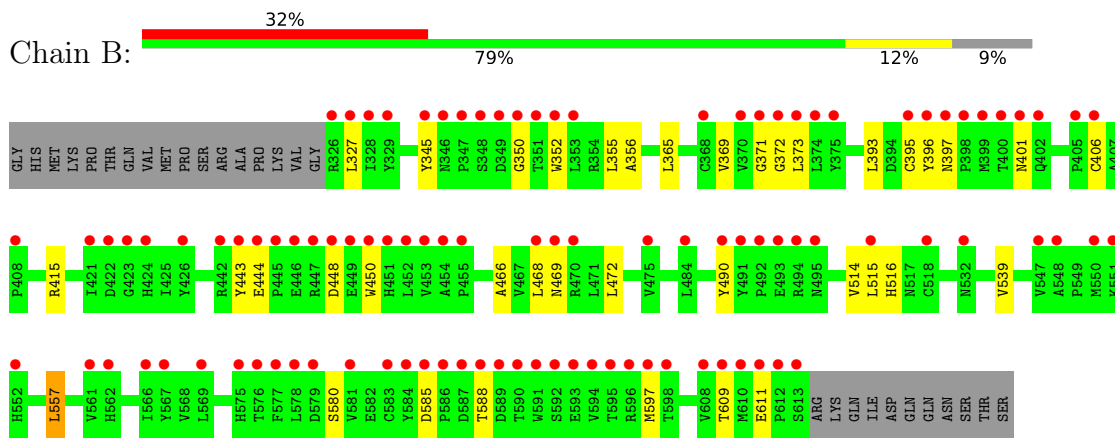
### 3 Residue-property plots [i](#)

These plots are drawn for all protein, RNA, DNA and oligosaccharide chains in the entry. The first graphic for a chain summarises the proportions of the various outlier classes displayed in the second graphic. The second graphic shows the sequence view annotated by issues in geometry and electron density. Residues are color-coded according to the number of geometric quality criteria for which they contain at least one outlier: green = 0, yellow = 1, orange = 2 and red = 3 or more. A red dot above a residue indicates a poor fit to the electron density ( $RSRZ > 2$ ). Stretches of 2 or more consecutive residues without any outlier are shown as a green connector. Residues present in the sample, but not in the model, are shown in grey.

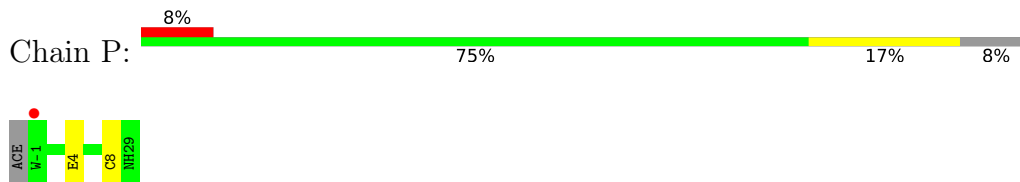
- Molecule 1: Kelch-like ECH-associated protein 1



- Molecule 1: Kelch-like ECH-associated protein 1



- Molecule 2: CP3



## 4 Data and refinement statistics

Property	Value	Source
Space group	C 1 2 1	Depositor
Cell constants a, b, c, $\alpha$ , $\beta$ , $\gamma$	161.96Å 68.58Å 77.72Å 90.00° 117.45° 90.00°	Depositor
Resolution (Å)	42.10 – 1.73 42.10 – 1.73	Depositor EDS
% Data completeness (in resolution range)	99.9 (42.10-1.73) 99.9 (42.10-1.73)	Depositor EDS
$R_{merge}$	(Not available)	Depositor
$R_{sym}$	(Not available)	Depositor
$\langle I/\sigma(I) \rangle$ <sup>1</sup>	1.05 (at 1.73Å)	Xtrriage
Refinement program	PHENIX 1.16_3549	Depositor
R, $R_{free}$	0.181 , 0.206 0.181 , 0.205	Depositor DCC
$R_{free}$ test set	2131 reflections (2.70%)	wwPDB-VP
Wilson B-factor (Å <sup>2</sup> )	36.7	Xtrriage
Anisotropy	0.258	Xtrriage
Bulk solvent $k_{sol}$ (e/Å <sup>3</sup> ), $B_{sol}$ (Å <sup>2</sup> )	0.34 , 64.4	EDS
L-test for twinning <sup>2</sup>	$\langle  L  \rangle = 0.50$ , $\langle L^2 \rangle = 0.33$	Xtrriage
Estimated twinning fraction	0.011 for -h-2*1,-k,l	Xtrriage
$F_o, F_c$ correlation	0.97	EDS
Total number of atoms	4933	wwPDB-VP
Average B, all atoms (Å <sup>2</sup> )	57.0	wwPDB-VP

Xtrriage's analysis on translational NCS is as follows: *The largest off-origin peak in the Patterson function is 5.63% of the height of the origin peak. No significant pseudotranslation is detected.*

<sup>1</sup>Intensities estimated from amplitudes.

<sup>2</sup>Theoretical values of  $\langle |L| \rangle$ ,  $\langle L^2 \rangle$  for acentric reflections are 0.5, 0.333 respectively for untwinned datasets, and 0.375, 0.2 for perfectly twinned datasets.

## 5 Model quality i

### 5.1 Standard geometry i

Bond lengths and bond angles in the following residue types are not validated in this section: EDO, ZK2, GOL, SO4, NH2, CL

The Z score for a bond length (or angle) is the number of standard deviations the observed value is removed from the expected value. A bond length (or angle) with  $|Z| > 5$  is considered an outlier worth inspection. RMSZ is the root-mean-square of all Z scores of the bond lengths (or angles).

Mol	Chain	Bond lengths		Bond angles	
		RMSZ	# Z  >5	RMSZ	# Z  >5
1	A	0.38	0/2437	0.58	1/3317 (0.0%)
1	B	0.31	0/2190	0.53	0/2996
2	P	0.28	0/78	0.51	0/101
All	All	0.35	0/4705	0.56	1/6414 (0.0%)

There are no bond length outliers.

All (1) bond angle outliers are listed below:

Mol	Chain	Res	Type	Atoms	Z	Observed(°)	Ideal(°)
1	A	349	ASP	CB-CG-OD1	5.72	123.45	118.30

There are no chirality outliers.

There are no planarity outliers.

### 5.2 Too-close contacts i

In the following table, the Non-H and H(model) columns list the number of non-hydrogen atoms and hydrogen atoms in the chain respectively. The H(added) column lists the number of hydrogen atoms added and optimized by MolProbity. The Clashes column lists the number of clashes within the asymmetric unit, whereas Symm-Clashes lists symmetry-related clashes.

Mol	Chain	Non-H	H(model)	H(added)	Clashes	Symm-Clashes
1	A	2363	0	2264	12	0
1	B	2137	0	1933	27	0
2	P	78	0	61	1	0
3	A	20	0	0	0	0
3	B	5	0	0	0	0
4	A	1	0	0	0	0
5	A	12	0	16	1	0

*Continued on next page...*

*Continued from previous page...*

Mol	Chain	Non-H	H(model)	H(added)	Clashes	Symm-Clashes
5	B	18	0	24	0	0
6	A	20	0	30	2	0
6	B	12	0	18	4	0
7	P	8	0	0	0	0
8	A	194	0	0	0	0
8	B	62	0	0	2	0
8	P	3	0	0	0	0
All	All	4933	0	4346	38	0

The all-atom clashscore is defined as the number of clashes found per 1000 atoms (including hydrogen atoms). The all-atom clashscore for this structure is 4.

All (38) close contacts within the same asymmetric unit are listed below, sorted by their clash magnitude.

Atom-1	Atom-2	Interatomic distance (Å)	Clash overlap (Å)
1:B:466:ALA:HB1	1:B:514:VAL:HG23	1.53	0.87
1:A:466:ALA:HB1	1:A:514[B]:VAL:HG23	1.64	0.80
1:A:469:ASN:ND2	1:B:469:ASN:OD1	2.28	0.66
1:A:553:ARG:HH22	6:A:711:EDO:H21	1.60	0.66
1:B:472:LEU:HB3	1:B:490:TYR:HB3	1.83	0.61
1:B:415:ARG:NH2	2:P:4:GLU:OE2	2.33	0.59
1:A:470[A]:ARG:HH22	6:B:706:EDO:H22	1.68	0.58
1:A:557:LEU:HD23	1:A:557:LEU:H	1.72	0.54
1:A:515:LEU:HD22	1:A:566:ILE:HG13	1.89	0.52
1:B:355:LEU:HD23	1:B:396:TYR:OH	2.09	0.52
1:B:365:LEU:H	1:B:365:LEU:HD23	1.75	0.51
1:B:327:LEU:HD12	1:B:611:GLU:HA	1.92	0.51
1:A:411[B]:VAL:HG12	1:A:412:PRO:HD2	1.93	0.49
1:B:345:TYR:OH	1:B:350:GLY:HA2	2.12	0.49
1:A:470[A]:ARG:NH2	6:B:706:EDO:H22	2.28	0.49
1:B:585:ASP:HB3	1:B:588:THR:HG22	1.96	0.47
1:B:373:LEU:HD22	1:B:397:ASN:HA	1.96	0.47
1:B:557:LEU:H	1:B:557:LEU:HD23	1.79	0.47
1:B:580:SER:N	8:B:803:HOH:O	2.40	0.46
1:B:345:TYR:HD1	1:B:352:TRP:CE2	2.34	0.45
1:A:388:THR:HG22	1:A:389:ASP:O	2.17	0.44
1:B:443:TYR:HB2	1:B:450:TRP:CH2	2.52	0.43
1:B:468:LEU:HD12	1:B:539:VAL:HG21	2.00	0.43
1:A:553:ARG:HH21	5:A:706:GOL:H12	1.83	0.43
1:B:369[A]:VAL:HG11	1:B:609:THR:HB	2.01	0.43
1:B:468:LEU:CD1	1:B:539:VAL:HG21	2.49	0.43

*Continued on next page...*

Continued from previous page...

Atom-1	Atom-2	Interatomic distance (Å)	Clash overlap (Å)
1:B:396:TYR:CE1	1:B:401:ASN:HA	2.55	0.42
1:B:393:LEU:HD23	1:B:406:CYS:HB2	2.02	0.41
1:B:597:MET:H	1:B:597:MET:HG2	1.69	0.41
1:B:371:GLY:N	6:B:707:EDO:H21	2.35	0.41
1:B:373:LEU:HB3	1:B:395:CYS:SG	2.60	0.41
1:B:515[B]:LEU:HD23	1:B:515[B]:LEU:HA	1.96	0.41
1:A:341:TYR:CZ	6:A:707:EDO:H11	2.56	0.41
1:B:516:HIS:HB2	8:B:804:HOH:O	2.21	0.41
1:B:372:GLY:H	6:B:707:EDO:H21	1.85	0.40
1:B:444:GLU:O	1:B:448:ASP:N	2.54	0.40
1:A:518:CYS:HB3	1:A:536:ARG:HG3	2.03	0.40
1:B:356:ALA:HB2	1:B:401:ASN:OD1	2.22	0.40

There are no symmetry-related clashes.

## 5.3 Torsion angles [i](#)

### 5.3.1 Protein backbone [i](#)

In the following table, the Percentiles column shows the percent Ramachandran outliers of the chain as a percentile score with respect to all X-ray entries followed by that with respect to entries of similar resolution.

The Analysed column shows the number of residues for which the backbone conformation was analysed, and the total number of residues.

Mol	Chain	Analysed	Favoured	Allowed	Outliers	Percentiles	
1	A	309/316 (98%)	301 (97%)	8 (3%)	0	100	100
1	B	290/316 (92%)	275 (95%)	15 (5%)	0	100	100
2	P	10/12 (83%)	10 (100%)	0	0	100	100
All	All	609/644 (95%)	586 (96%)	23 (4%)	0	100	100

There are no Ramachandran outliers to report.

### 5.3.2 Protein sidechains [i](#)

In the following table, the Percentiles column shows the percent sidechain outliers of the chain as a percentile score with respect to all X-ray entries followed by that with respect to entries of similar resolution.

The Analysed column shows the number of residues for which the sidechain conformation was analysed, and the total number of residues.

Mol	Chain	Analysed	Rotameric	Outliers	Percentiles	
1	A	252/258 (98%)	251 (100%)	1 (0%)	91	86
1	B	206/258 (80%)	205 (100%)	1 (0%)	88	83
2	P	9/9 (100%)	7 (78%)	2 (22%)	1	0
All	All	467/525 (89%)	463 (99%)	4 (1%)	84	67

All (4) residues with a non-rotameric sidechain are listed below:

Mol	Chain	Res	Type
1	A	557	LEU
1	B	557	LEU
2	P	8[A]	CYS
2	P	8[B]	CYS

Sometimes sidechains can be flipped to improve hydrogen bonding and reduce clashes. There are no such sidechains identified.

### 5.3.3 RNA [i](#)

There are no RNA molecules in this entry.

## 5.4 Non-standard residues in protein, DNA, RNA chains [i](#)

There are no non-standard protein/DNA/RNA residues in this entry.

## 5.5 Carbohydrates [i](#)

There are no monosaccharides in this entry.

## 5.6 Ligand geometry [i](#)

Of 20 ligands modelled in this entry, 1 is monoatomic - leaving 19 for Mogul analysis.

In the following table, the Counts columns list the number of bonds (or angles) for which Mogul statistics could be retrieved, the number of bonds (or angles) that are observed in the model and the number of bonds (or angles) that are defined in the Chemical Component Dictionary. The Link column lists molecule types, if any, to which the group is linked. The Z score for a bond length (or angle) is the number of standard deviations the observed value is removed from the

expected value. A bond length (or angle) with  $|Z| > 2$  is considered an outlier worth inspection. RMSZ is the root-mean-square of all Z scores of the bond lengths (or angles).

Mol	Type	Chain	Res	Link	Bond lengths			Bond angles		
					Counts	RMSZ	# Z  > 2	Counts	RMSZ	# Z  > 2
3	SO4	A	704	-	4,4,4	0.14	0	6,6,6	0.04	0
5	GOL	B	704	-	5,5,5	0.92	0	5,5,5	1.01	0
6	EDO	A	712	-	3,3,3	0.50	0	2,2,2	0.25	0
6	EDO	B	703	-	3,3,3	0.48	0	2,2,2	0.37	0
7	ZK2	P	101	2	8,8,9	0.25	0	10,10,11	0.26	0
6	EDO	B	706	-	3,3,3	0.48	0	2,2,2	0.27	0
5	GOL	B	702	-	5,5,5	1.04	0	5,5,5	0.96	0
5	GOL	B	705	-	5,5,5	0.97	0	5,5,5	0.90	0
3	SO4	A	701	-	4,4,4	0.14	0	6,6,6	0.07	0
3	SO4	A	702	-	4,4,4	0.15	0	6,6,6	0.08	0
3	SO4	A	703	-	4,4,4	0.14	0	6,6,6	0.08	0
6	EDO	A	708	-	3,3,3	0.46	0	2,2,2	0.30	0
6	EDO	A	710	-	3,3,3	0.45	0	2,2,2	0.31	0
6	EDO	A	711	-	3,3,3	0.48	0	2,2,2	0.34	0
6	EDO	B	707	-	3,3,3	0.47	0	2,2,2	0.29	0
5	GOL	A	709	-	5,5,5	1.28	0	5,5,5	0.53	0
6	EDO	A	707	-	3,3,3	0.47	0	2,2,2	0.31	0
3	SO4	B	701	-	4,4,4	0.14	0	6,6,6	0.09	0
5	GOL	A	706	-	5,5,5	0.82	0	5,5,5	0.92	0

In the following table, the Chirals column lists the number of chiral outliers, the number of chiral centers analysed, the number of these observed in the model and the number defined in the Chemical Component Dictionary. Similar counts are reported in the Torsion and Rings columns. '-' means no outliers of that kind were identified.

Mol	Type	Chain	Res	Link	Chirals	Torsions	Rings
5	GOL	B	702	-	-	0/4/4/4	-
5	GOL	B	705	-	-	0/4/4/4	-
6	EDO	A	708	-	-	1/1/1/1	-
5	GOL	A	709	-	-	2/4/4/4	-
5	GOL	B	704	-	-	0/4/4/4	-
6	EDO	A	707	-	-	1/1/1/1	-
6	EDO	A	710	-	-	0/1/1/1	-
6	EDO	A	712	-	-	0/1/1/1	-
6	EDO	B	703	-	-	0/1/1/1	-
7	ZK2	P	101	2	-	-	0/1/1/1
6	EDO	A	711	-	-	1/1/1/1	-
6	EDO	B	706	-	-	0/1/1/1	-
6	EDO	B	707	-	-	0/1/1/1	-
5	GOL	A	706	-	-	0/4/4/4	-

There are no bond length outliers.

There are no bond angle outliers.

There are no chirality outliers.

All (5) torsion outliers are listed below:

Mol	Chain	Res	Type	Atoms
5	A	709	GOL	O1-C1-C2-C3
5	A	709	GOL	O1-C1-C2-O2
6	A	708	EDO	O1-C1-C2-O2
6	A	711	EDO	O1-C1-C2-O2
6	A	707	EDO	O1-C1-C2-O2

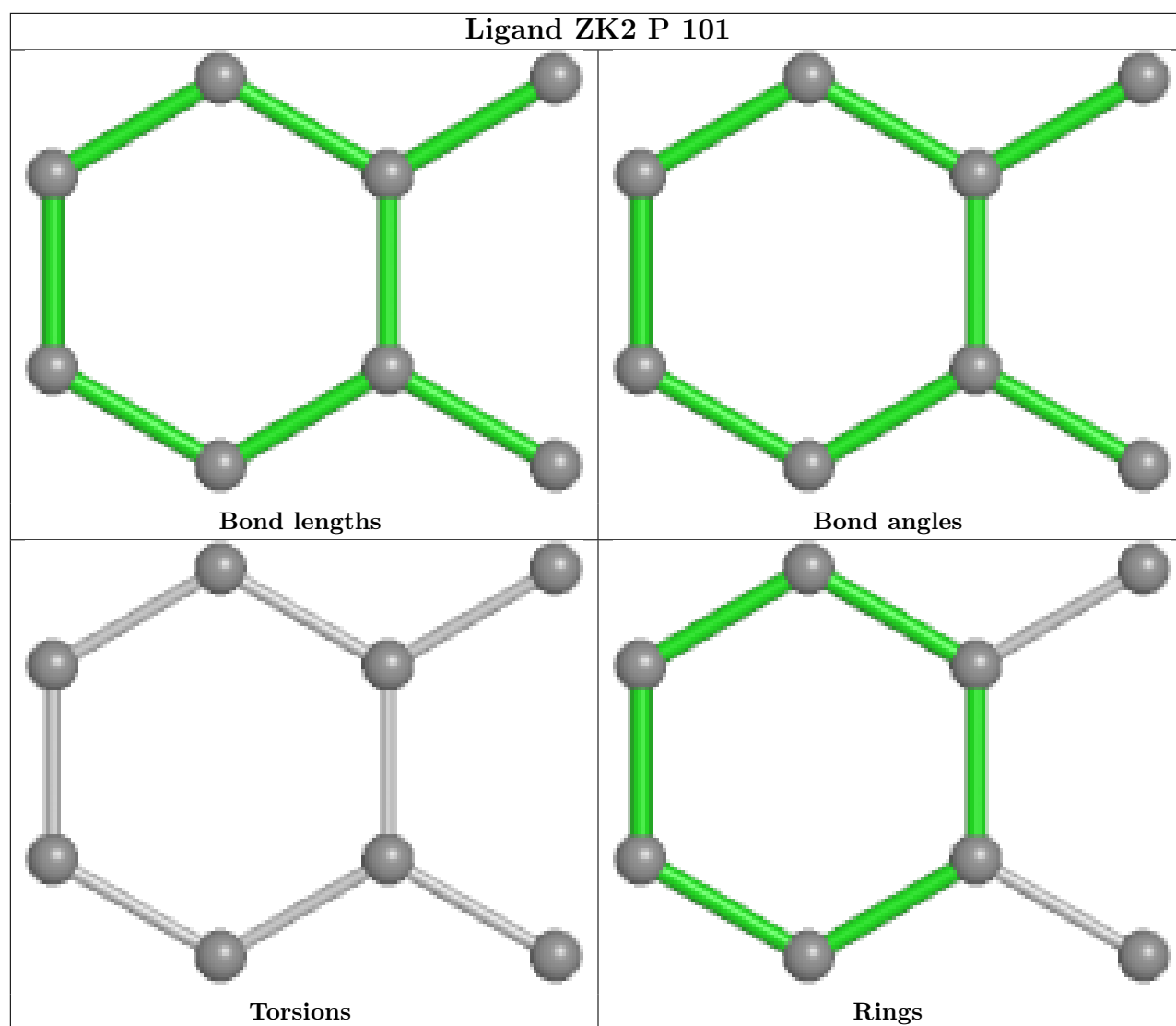
There are no ring outliers.

5 monomers are involved in 7 short contacts:

Mol	Chain	Res	Type	Clashes	Symm-Clashes
6	B	706	EDO	2	0
6	A	711	EDO	1	0
6	B	707	EDO	2	0
6	A	707	EDO	1	0
5	A	706	GOL	1	0

The following is a two-dimensional graphical depiction of Mogul quality analysis of bond lengths, bond angles, torsion angles, and ring geometry for all instances of the Ligand of Interest. In addition, ligands with molecular weight > 250 and outliers as shown on the validation Tables will also be included. For torsion angles, if less than 5% of the Mogul distribution of torsion angles is within 10 degrees of the torsion angle in question, then that torsion angle is considered an outlier. Any bond that is central to one or more torsion angles identified as an outlier by Mogul will be highlighted in the graph. For rings, the root-mean-square deviation (RMSD) between the ring in question and similar rings identified by Mogul is calculated over all ring torsion angles. If the average RMSD is greater than 60 degrees and the minimal RMSD between the ring in question and any Mogul-identified rings is also greater than 60 degrees, then that ring is considered an outlier. The outliers are highlighted in purple. The color gray indicates Mogul did not find sufficient equivalents in the CSD to analyse the geometry.





## 5.7 Other polymers [i](#)

There are no such residues in this entry.

## 5.8 Polymer linkage issues [i](#)

There are no chain breaks in this entry.

## 6 Fit of model and data [i](#)

### 6.1 Protein, DNA and RNA chains [i](#)

In the following table, the column labelled ‘#RSRZ > 2’ contains the number (and percentage) of RSRZ outliers, followed by percent RSRZ outliers for the chain as percentile scores relative to all X-ray entries and entries of similar resolution. The OWAB column contains the minimum, median, 95<sup>th</sup> percentile and maximum values of the occupancy-weighted average B-factor per residue. The column labelled ‘Q < 0.9’ lists the number of (and percentage) of residues with an average occupancy less than 0.9.

Mol	Chain	Analysed	<RSRZ>	#RSRZ>2	OWAB(Å <sup>2</sup> )	Q<0.9
1	A	290/316 (91%)	0.38	10 (3%) 45 51	29, 37, 64, 90	0
1	B	288/316 (91%)	1.78	102 (35%) 0 0	34, 71, 116, 156	0
2	P	10/12 (83%)	1.50	1 (10%) 7 9	42, 51, 89, 100	0
All	All	588/644 (91%)	1.08	113 (19%) 1 1	29, 48, 111, 156	0

All (113) RSRZ outliers are listed below:

Mol	Chain	Res	Type	RSRZ
2	P	-1	TRP	12.0
1	B	346	ASN	10.5
1	B	352	TRP	8.0
1	B	399	MET	7.9
1	B	591	TRP	7.7
1	B	610	MET	7.5
1	B	345	TYR	7.2
1	B	351	THR	6.9
1	B	595	THR	6.5
1	B	353	LEU	6.4
1	B	452	LEU	6.4
1	B	448	ASP	6.2
1	B	328	ILE	6.1
1	B	594	VAL	6.0
1	B	612	PRO	5.9
1	B	349	ASP	5.7
1	B	583	CYS	5.7
1	B	592	SER	5.6
1	B	581	VAL	5.6
1	B	348	SER	5.4
1	B	397	ASN	5.1
1	B	408	PRO	5.1
1	B	609	THR	5.0

*Continued on next page...*

*Continued from previous page...*

<b>Mol</b>	<b>Chain</b>	<b>Res</b>	<b>Type</b>	<b>RSRZ</b>
1	B	515[A]	LEU	5.0
1	B	494	ARG	4.9
1	B	613	SER	4.9
1	B	562	HIS	4.8
1	B	421	ILE	4.8
1	B	423	GLY	4.8
1	B	375	TYR	4.7
1	B	446	GLU	4.7
1	B	373	LEU	4.7
1	A	613	SER	4.7
1	B	442	ARG	4.6
1	B	552	HIS	4.5
1	A	399[A]	MET	4.4
1	B	584	TYR	4.3
1	B	443	TYR	4.3
1	B	518	CYS	4.2
1	B	608	VAL	4.2
1	B	575	HIS	4.2
1	B	447	ARG	4.1
1	B	400	THR	4.1
1	B	491	TYR	4.1
1	B	402	GLN	4.0
1	B	405	PRO	4.0
1	B	567	TYR	3.9
1	B	561	VAL	3.9
1	B	327	LEU	3.9
1	B	451	HIS	3.8
1	B	576	THR	3.8
1	B	449	GLU	3.8
1	B	350	GLY	3.8
1	B	596	ARG	3.7
1	B	396	TYR	3.7
1	B	495	ASN	3.7
1	B	579	ASP	3.6
1	B	611	GLU	3.6
1	B	401	ASN	3.6
1	B	395	CYS	3.5
1	B	597	MET	3.5
1	B	444	GLU	3.4
1	B	590	THR	3.4
1	B	450	TRP	3.3
1	B	454	ALA	3.3

*Continued on next page...*

*Continued from previous page...*

Mol	Chain	Res	Type	RSRZ
1	B	371	GLY	3.3
1	B	326[A]	ARG	3.3
1	B	424	HIS	3.2
1	B	493	GLU	3.2
1	B	585	ASP	3.2
1	B	587	ASP	3.1
1	A	384	PRO	3.1
1	B	455	PRO	3.0
1	B	588	THR	3.0
1	B	577	PHE	3.0
1	B	370	VAL	3.0
1	B	550	MET	2.9
1	B	398	PRO	2.9
1	B	406	CYS	2.9
1	B	372	GLY	2.9
1	B	453	VAL	2.9
1	B	593	GLU	2.9
1	B	586	PRO	2.9
1	B	470	ARG	2.9
1	B	598	THR	2.9
1	A	610[A]	MET	2.8
1	B	589	ASP	2.8
1	B	368	CYS	2.8
1	B	422	ASP	2.7
1	B	548	ALA	2.6
1	A	484	LEU	2.6
1	B	547	VAL	2.6
1	B	445	PRO	2.5
1	B	347	PRO	2.5
1	B	578	LEU	2.4
1	A	385	ASP	2.3
1	B	426	TYR	2.3
1	A	461	ILE	2.3
1	B	374	LEU	2.3
1	B	484	LEU	2.2
1	B	551	LYS	2.2
1	B	469	ASN	2.2
1	A	383[A]	SER	2.2
1	B	468	LEU	2.2
1	A	614	ARG	2.1
1	B	569	LEU	2.1
1	A	500	ILE	2.1

*Continued on next page...*

*Continued from previous page...*

Mol	Chain	Res	Type	RSRZ
1	B	490	TYR	2.1
1	B	475	VAL	2.1
1	B	492	PRO	2.1
1	B	532	ASN	2.1
1	B	329	TYR	2.0
1	B	566	ILE	2.0

## 6.2 Non-standard residues in protein, DNA, RNA chains [i](#)

There are no non-standard protein/DNA/RNA residues in this entry.

## 6.3 Carbohydrates [i](#)

There are no monosaccharides in this entry.

## 6.4 Ligands [i](#)

In the following table, the Atoms column lists the number of modelled atoms in the group and the number defined in the chemical component dictionary. The B-factors column lists the minimum, median, 95<sup>th</sup> percentile and maximum values of B factors of atoms in the group. The column labelled 'Q<0.9' lists the number of atoms with occupancy less than 0.9.

Mol	Type	Chain	Res	Atoms	RSCC	RSR	B-factors(Å <sup>2</sup> )	Q<0.9
5	GOL	A	706	6/6	0.46	0.21	75,78,81,87	0
7	ZK2	P	101	8/9	0.60	0.43	90,105,113,114	0
6	EDO	A	712	4/4	0.69	0.32	70,71,73,77	0
6	EDO	B	707	4/4	0.70	0.15	76,79,82,83	0
6	EDO	B	706	4/4	0.71	0.16	80,89,92,96	0
5	GOL	B	705	6/6	0.75	0.21	54,70,76,86	0
5	GOL	A	709	6/6	0.77	0.21	52,59,63,63	0
6	EDO	A	711	4/4	0.83	0.12	69,76,79,82	0
6	EDO	A	710	4/4	0.85	0.20	70,74,80,84	0
3	SO4	B	701	5/5	0.85	0.20	97,101,105,110	0
3	SO4	A	701	5/5	0.85	0.18	95,98,109,111	0
3	SO4	A	704	5/5	0.86	0.27	126,127,130,133	0
5	GOL	B	702	6/6	0.89	0.11	37,46,51,57	0
5	GOL	B	704	6/6	0.91	0.15	64,66,70,71	0
6	EDO	B	703	4/4	0.92	0.14	60,67,74,81	0
6	EDO	A	708	4/4	0.92	0.11	66,69,70,79	0
3	SO4	A	703	5/5	0.93	0.17	104,105,105,111	0

*Continued on next page...*

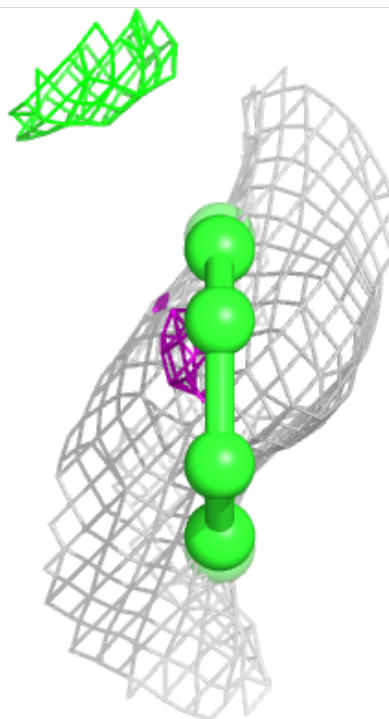
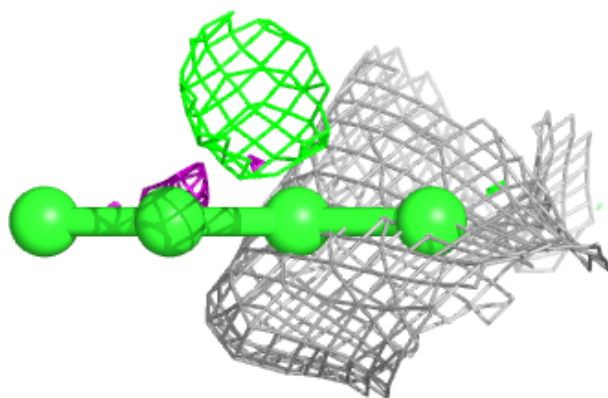
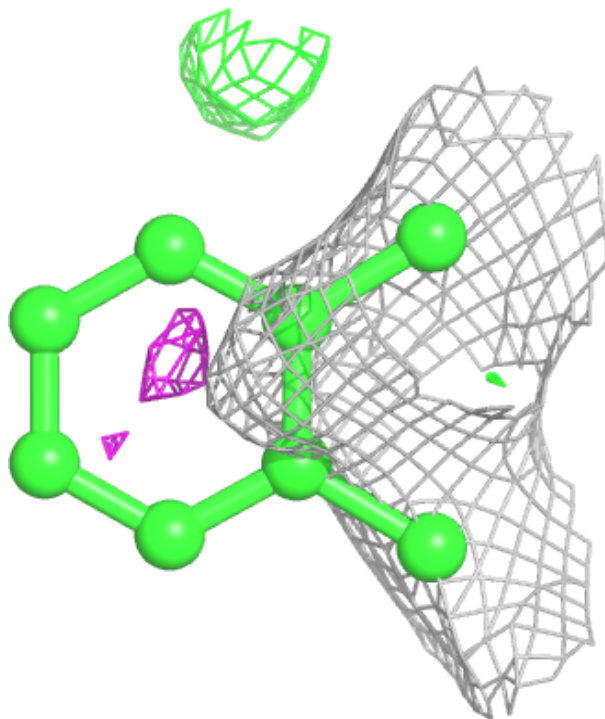
*Continued from previous page...*

<b>Mol</b>	<b>Type</b>	<b>Chain</b>	<b>Res</b>	<b>Atoms</b>	<b>RSCC</b>	<b>RSR</b>	<b>B-factors(<math>\text{\AA}^2</math>)</b>	<b>Q&lt;0.9</b>
3	SO4	A	702	5/5	0.94	0.34	34,41,42,55	5
6	EDO	A	707	4/4	0.95	0.13	45,67,69,74	0
4	CL	A	705	1/1	0.98	0.08	62,62,62,62	0

The following is a graphical depiction of the model fit to experimental electron density of all instances of the Ligand of Interest. In addition, ligands with molecular weight > 250 and outliers as shown on the geometry validation Tables will also be included. Each fit is shown from different orientation to approximate a three-dimensional view.

**Electron density around ZK2 P 101:**

$2mF_o-DF_c$  (at 0.7 rmsd) in gray  
 $mF_o-DF_c$  (at 3 rmsd) in purple (negative)  
and green (positive)



## 6.5 Other polymers [i](#)

There are no such residues in this entry.