



Full wwPDB X-ray Structure Validation Report ⓘ

Oct 23, 2023 – 01:10 pm BST

PDB ID : 8PND
Title : The ES3 intermediate of hydroxymethylbilane synthase R167Q variant
Authors : Saeter, M.C.; Bustad, H.J.; Laitaoja, M.; Janis, J.; Martinez, A.; Aarsand, A.K.; Kallio, J.P.
Deposited on : 2023-06-30
Resolution : 1.90 Å(reported)

This is a Full wwPDB X-ray Structure Validation Report for a publicly released PDB entry.

We welcome your comments at validation@mail.wwpdb.org

A user guide is available at

<https://www.wwpdb.org/validation/2017/XrayValidationReportHelp>

with specific help available everywhere you see the ⓘ symbol.

The types of validation reports are described at

<http://www.wwpdb.org/validation/2017/FAQs#types>.

The following versions of software and data (see [references ⓘ](#)) were used in the production of this report:

MolProbity : 4.02b-467
Mogul : 1.8.4, CSD as541be (2020)
Xtriage (Phenix) : 1.13
EDS : 2.36
buster-report : 1.1.7 (2018)
Percentile statistics : 20191225.v01 (using entries in the PDB archive December 25th 2019)
Refmac : 5.8.0158
CCP4 : 7.0.044 (Gargrove)
Ideal geometry (proteins) : Engh & Huber (2001)
Ideal geometry (DNA, RNA) : Parkinson et al. (1996)
Validation Pipeline (wwPDB-VP) : 2.36

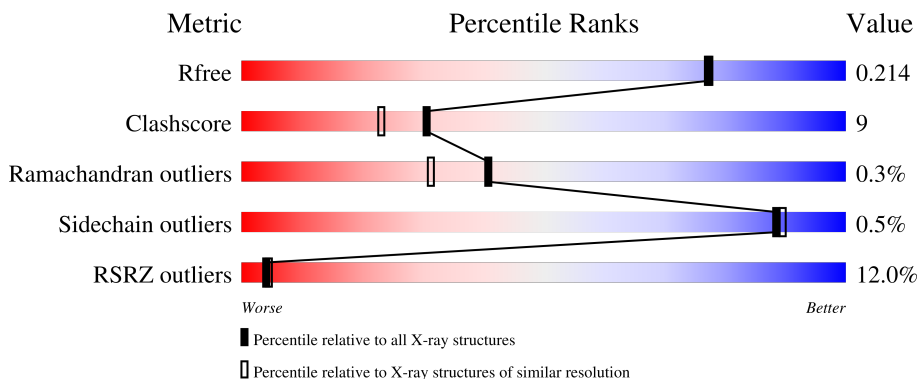
1 Overall quality at a glance

The following experimental techniques were used to determine the structure:

X-RAY DIFFRACTION

The reported resolution of this entry is 1.90 Å.

Percentile scores (ranging between 0-100) for global validation metrics of the entry are shown in the following graphic. The table shows the number of entries on which the scores are based.



Metric	Whole archive (#Entries)	Similar resolution (#Entries, resolution range(Å))
R_{free}	130704	6207 (1.90-1.90)
Clashscore	141614	6847 (1.90-1.90)
Ramachandran outliers	138981	6760 (1.90-1.90)
Sidechain outliers	138945	6760 (1.90-1.90)
RSRZ outliers	127900	6082 (1.90-1.90)

The table below summarises the geometric issues observed across the polymeric chains and their fit to the electron density. The red, orange, yellow and green segments of the lower bar indicate the fraction of residues that contain outliers for ≥ 3 , 2, 1 and 0 types of geometric quality criteria respectively. A grey segment represents the fraction of residues that are not modelled. The numeric value for each fraction is indicated below the corresponding segment, with a dot representing fractions $\leq 5\%$. The upper red bar (where present) indicates the fraction of residues that have poor fit to the electron density. The numeric value is given above the bar.

Mol	Chain	Length	Quality of chain
1	A	364	
1	B	364	

2 Entry composition i

There are 5 unique types of molecules in this entry. The entry contains 5548 atoms, of which 6 are hydrogens and 0 are deuteriums.

In the tables below, the ZeroOcc column contains the number of atoms modelled with zero occupancy, the AltConf column contains the number of residues with at least one atom in alternate conformation and the Trace column contains the number of residues modelled with at most 2 atoms.

- Molecule 1 is a protein called Porphobilinogen deaminase.

Mol	Chain	Residues	Atoms					ZeroOcc	AltConf	Trace
			Total	C	N	O	S			
1	A	330	2571	1613	470	478	10	0	3	0
1	B	326	2517	1583	457	467	10	0	0	0

There are 42 discrepancies between the modelled and reference sequences:

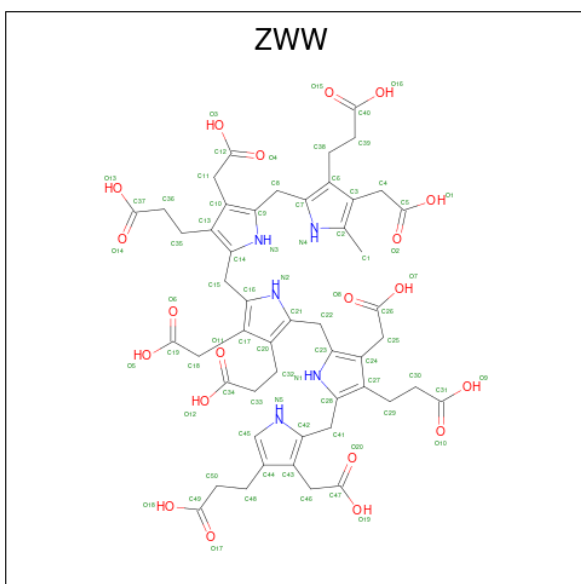
Chain	Residue	Modelled	Actual	Comment	Reference
A	-2	MET	-	initiating methionine	UNP P08397
A	-1	GLY	-	expression tag	UNP P08397
A	0	SER	-	expression tag	UNP P08397
A	1	SER	-	expression tag	UNP P08397
A	2	HIS	-	expression tag	UNP P08397
A	3	HIS	-	expression tag	UNP P08397
A	4	HIS	-	expression tag	UNP P08397
A	5	HIS	-	expression tag	UNP P08397
A	6	HIS	-	expression tag	UNP P08397
A	7	HIS	-	expression tag	UNP P08397
A	8	SER	-	expression tag	UNP P08397
A	9	SER	-	expression tag	UNP P08397
A	10	GLY	-	expression tag	UNP P08397
A	11	GLU	-	expression tag	UNP P08397
A	12	ASN	-	expression tag	UNP P08397
A	13	LEU	-	expression tag	UNP P08397
A	14	TYR	-	expression tag	UNP P08397
A	15	PHE	-	expression tag	UNP P08397
A	16	GLN	-	expression tag	UNP P08397
A	17	GLY	-	expression tag	UNP P08397
A	167	GLN	ARG	engineered mutation	UNP P08397
B	-2	MET	-	initiating methionine	UNP P08397
B	-1	GLY	-	expression tag	UNP P08397
B	0	SER	-	expression tag	UNP P08397
B	1	SER	-	expression tag	UNP P08397

Continued on next page...

Continued from previous page...

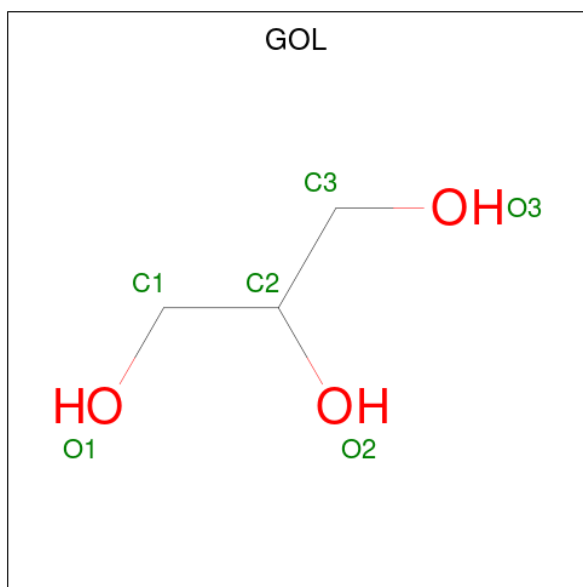
Chain	Residue	Modelled	Actual	Comment	Reference
B	2	HIS	-	expression tag	UNP P08397
B	3	HIS	-	expression tag	UNP P08397
B	4	HIS	-	expression tag	UNP P08397
B	5	HIS	-	expression tag	UNP P08397
B	6	HIS	-	expression tag	UNP P08397
B	7	HIS	-	expression tag	UNP P08397
B	8	SER	-	expression tag	UNP P08397
B	9	SER	-	expression tag	UNP P08397
B	10	GLY	-	expression tag	UNP P08397
B	11	GLU	-	expression tag	UNP P08397
B	12	ASN	-	expression tag	UNP P08397
B	13	LEU	-	expression tag	UNP P08397
B	14	TYR	-	expression tag	UNP P08397
B	15	PHE	-	expression tag	UNP P08397
B	16	GLN	-	expression tag	UNP P08397
B	17	GLY	-	expression tag	UNP P08397
B	167	GLN	ARG	engineered mutation	UNP P08397

- Molecule 2 is 3-[4-(2-hydroxy-2-oxoethyl)-5-[[4-(2-hydroxy-2-oxoethyl)-5-[[4-(2-hydroxy-2-oxoethyl)-5-[[4-(2-hydroxy-2-oxoethyl)-5-[[4-(2-hydroxy-2-oxoethyl)-3-(3-hydroxy-3-oxopropyl)-5-methyl-1 {H}-pyrrol-2-yl]methyl]-3-(3-hydroxy-3-oxopropyl)-1 {H}-pyrrol-2-yl]methyl]-3-(3-hydroxy-3-oxopropyl)-1 {H}-pyrrol-2-yl]methyl]-3-(3-hydroxy-3-oxopropyl)-1 {H}-pyrrol-2-yl]methyl]-1 {H}-pyrrol-3-yl]propanoic acid (three-letter code: ZWW) (formula: C₅₀H₅₇N₅O₂₀) (labeled as "Ligand of Interest" by depositor).



Mol	Chain	Residues	Atoms				ZeroOcc	AltConf
2	A	1	Total	C	N	O	0	0
			75	50	5	20		
2	B	1	Total	C	N	O	0	0
			75	50	5	20		

- Molecule 3 is GLYCEROL (three-letter code: GOL) (formula: C₃H₈O₃).



Mol	Chain	Residues	Atoms			ZeroOcc	AltConf
3	A	1	Total	C	O	0	0
			6	3	3		
3	A	1	Total	C	O	0	0
			6	3	3		
3	A	1	Total	C	O	0	0
			6	3	3		
3	B	1	Total	C	O	0	0
			6	3	3		

- Molecule 4 is 1,2-ETHANEDIOL (three-letter code: EDO) (formula: C₂H₆O₂).



Mol	Chain	Residues	Atoms	ZeroOcc	AltConf
4	B	1	Total C O 4 2 2	0	0
4	B	1	Total C H O 10 2 6 2	0	0

- Molecule 5 is water.

Mol	Chain	Residues	Atoms	ZeroOcc	AltConf
5	A	210	Total O 213 213	0	3
5	B	59	Total O 59 59	0	0

4 Data and refinement statistics

Property	Value	Source
Space group	P 2 21 21	Depositor
Cell constants a, b, c, α , β , γ	53.60Å 81.14Å 192.35Å 90.00° 90.00° 90.00°	Depositor
Resolution (Å)	43.56 – 1.90 43.56 – 1.90	Depositor EDS
% Data completeness (in resolution range)	99.8 (43.56-1.90) 99.8 (43.56-1.90)	Depositor EDS
R_{merge}	0.04	Depositor
R_{sym}	(Not available)	Depositor
$\langle I/\sigma(I) \rangle$ ¹	1.60 (at 1.89Å)	Xtrriage
Refinement program	PHENIX 1.19.2_4158	Depositor
R, R_{free}	0.185 , 0.217 0.183 , 0.214	Depositor DCC
R_{free} test set	3422 reflections (5.11%)	wwPDB-VP
Wilson B-factor (Å ²)	44.6	Xtrriage
Anisotropy	0.310	Xtrriage
Bulk solvent k_{sol} (e/Å ³), B_{sol} (Å ²)	0.33 , 56.0	EDS
L-test for twinning ²	$\langle L \rangle = 0.49$, $\langle L^2 \rangle = 0.32$	Xtrriage
Estimated twinning fraction	No twinning to report.	Xtrriage
F_o, F_c correlation	0.97	EDS
Total number of atoms	5548	wwPDB-VP
Average B, all atoms (Å ²)	69.0	wwPDB-VP

Xtrriage's analysis on translational NCS is as follows: *The largest off-origin peak in the Patterson function is 5.30% of the height of the origin peak. No significant pseudotranslation is detected.*

¹Intensities estimated from amplitudes.

²Theoretical values of $\langle |L| \rangle$, $\langle L^2 \rangle$ for acentric reflections are 0.5, 0.333 respectively for untwinned datasets, and 0.375, 0.2 for perfectly twinned datasets.

5 Model quality

5.1 Standard geometry

Bond lengths and bond angles in the following residue types are not validated in this section: GOL, ZWW, EDO

The Z score for a bond length (or angle) is the number of standard deviations the observed value is removed from the expected value. A bond length (or angle) with $|Z| > 5$ is considered an outlier worth inspection. RMSZ is the root-mean-square of all Z scores of the bond lengths (or angles).

Mol	Chain	Bond lengths		Bond angles	
		RMSZ	# Z >5	RMSZ	# Z >5
1	A	0.43	0/2613	0.62	0/3537
1	B	0.30	0/2559	0.54	0/3464
All	All	0.37	0/5172	0.58	0/7001

There are no bond length outliers.

There are no bond angle outliers.

There are no chirality outliers.

There are no planarity outliers.

5.2 Too-close contacts

In the following table, the Non-H and H(model) columns list the number of non-hydrogen atoms and hydrogen atoms in the chain respectively. The H(added) column lists the number of hydrogen atoms added and optimized by MolProbity. The Clashes column lists the number of clashes within the asymmetric unit, whereas Symm-Clashes lists symmetry-related clashes.

Mol	Chain	Non-H	H(model)	H(added)	Clashes	Symm-Clashes
1	A	2571	0	2620	32	0
1	B	2517	0	2571	65	0
2	A	75	0	0	0	0
2	B	75	0	0	1	0
3	A	18	0	24	0	0
3	B	6	0	8	0	0
4	B	8	6	12	0	0
5	A	213	0	0	9	0
5	B	59	0	0	1	0
All	All	5542	6	5235	97	0

The all-atom clashscore is defined as the number of clashes found per 1000 atoms (including

hydrogen atoms). The all-atom clashscore for this structure is 9.

All (97) close contacts within the same asymmetric unit are listed below, sorted by their clash magnitude.

Atom-1	Atom-2	Interatomic distance (Å)	Clash overlap (Å)
1:A:263:VAL:HG11	1:A:351:LEU:HD23	1.18	1.17
1:B:263:VAL:HG11	1:B:351:LEU:HD23	1.46	0.98
1:B:263:VAL:HG11	1:B:351:LEU:CD2	2.07	0.84
1:A:50:GLN:HG3	5:A:675:HOH:O	1.78	0.84
1:B:251:ARG:HB3	1:B:316:VAL:HG11	1.60	0.82
1:B:75:SER:OG	1:B:78:THR:OG1	2.01	0.78
1:B:100:LEU:HD13	1:B:110:ILE:CD1	2.18	0.73
1:B:332:GLN:O	1:B:336:ILE:HD12	1.90	0.71
1:B:100:LEU:HD13	1:B:110:ILE:HD12	1.75	0.69
1:B:349:ASN:O	1:B:353:VAL:HG23	1.93	0.68
1:B:300:HIS:O	1:B:302:PRO:HD3	1.93	0.68
1:B:303:ALA:O	1:B:305:HIS:ND1	2.27	0.67
1:B:343:LEU:HD22	1:B:348:LYS:HG2	1.77	0.67
1:A:58:THR:OG1	5:A:502:HOH:O	2.11	0.67
1:A:73:GLU:HG2	1:A:76:LEU:HD23	1.77	0.65
1:B:215:VAL:HG13	1:B:250:GLU:HB3	1.77	0.65
1:A:75:SER:HB2	1:A:78:THR:OG1	1.98	0.64
1:B:215:VAL:HG23	5:B:501:HOH:O	1.99	0.63
1:B:251:ARG:HB3	1:B:316:VAL:CG1	2.28	0.62
1:B:251:ARG:CB	1:B:316:VAL:HG11	2.30	0.60
1:B:83:HIS:CE1	1:B:87:LYS:HE3	2.37	0.60
1:B:343:LEU:HD22	1:B:348:LYS:CG	2.32	0.59
1:A:263:VAL:HG11	1:A:351:LEU:CD2	2.12	0.58
1:A:307:ASP:HA	5:A:524:HOH:O	2.04	0.57
1:B:100:LEU:HD13	1:B:110:ILE:HD11	1.86	0.56
1:B:305:HIS:HA	1:B:322:ASN:O	2.06	0.56
1:B:112:ALA:HA	1:B:239:HIS:CE1	2.40	0.56
1:B:309:PRO:O	1:B:321:ARG:HD3	2.04	0.56
1:A:251:ARG:HB3	1:A:316:VAL:HG11	1.88	0.56
1:B:81:LEU:HB3	1:B:93:VAL:HG11	1.88	0.56
1:B:82:GLU:HB3	1:B:108:PHE:CE2	2.42	0.55
1:B:175:ARG:HG2	1:B:179:GLU:CD	2.26	0.55
1:B:306:GLU:O	1:B:322:ASN:HA	2.06	0.55
1:A:179:GLU:O	1:A:181:GLN:N	2.41	0.54
1:B:212:MET:HE3	1:B:283:TRP:HH2	1.73	0.53
1:B:274:GLY:O	1:B:299:ILE:N	2.38	0.53
1:A:262:SER:OG	1:A:355:ARG:HD3	2.09	0.52
1:B:23:VAL:HG13	1:B:92:LEU:CD1	2.40	0.52

Continued on next page...

Continued from previous page...

Atom-1	Atom-2	Interatomic distance (Å)	Clash overlap (Å)
1:B:104:LEU:HD11	1:B:110:ILE:HD11	1.92	0.52
1:B:126:HIS:ND1	1:B:128:LYS:HG2	2.24	0.52
1:B:271:MET:CE	1:B:301:VAL:HG22	2.41	0.51
1:B:291:ILE:CD1	1:B:350:ILE:HD12	2.40	0.51
1:B:73:GLU:O	1:B:74:LYS:HB2	2.09	0.51
1:A:285:LEU:HD12	1:A:357:LEU:HD13	1.93	0.51
1:B:227:LYS:HD2	1:B:227:LYS:C	2.31	0.50
1:A:304:GLN:HB2	5:A:619:HOH:O	2.11	0.50
1:A:306:GLU:O	1:A:322:ASN:HA	2.10	0.50
1:B:332:GLN:HG2	1:B:336:ILE:CD1	2.41	0.50
1:B:299:ILE:CG2	1:B:327:PRO:HB3	2.42	0.50
1:B:311:ASP:O	1:B:313:PRO:HD3	2.12	0.49
1:A:71:ILE:HD12	1:A:72:GLY:N	2.26	0.49
1:B:271:MET:HE2	1:B:301:VAL:HG22	1.94	0.49
1:B:154:LEU:HB3	1:B:163:PHE:CZ	2.48	0.49
1:A:285:LEU:HD12	1:A:357:LEU:CD1	2.43	0.48
1:B:28:SER:O	1:B:32:ARG:HG3	2.13	0.48
1:B:127:PRO:O	1:B:130:VAL:HG23	2.14	0.48
1:B:73:GLU:HB3	2:B:401:ZWW:C1	2.44	0.48
1:B:23:VAL:HG13	1:B:92:LEU:HD11	1.96	0.47
1:B:291:ILE:HD12	1:B:291:ILE:N	2.29	0.47
1:B:343:LEU:HB3	1:B:348:LYS:HE3	1.95	0.47
1:B:73:GLU:HB3	1:B:74:LYS:H	1.45	0.47
1:B:103:VAL:HG13	1:B:103:VAL:O	2.15	0.47
1:A:227:LYS:HA	1:A:227:LYS:HD3	1.63	0.46
1:A:300:HIS:HE1	5:A:632:HOH:O	1.97	0.46
1:B:347:ALA:O	1:B:351:LEU:HG	2.16	0.45
1:B:215:VAL:HG13	1:B:250:GLU:CB	2.44	0.45
1:A:170:LEU:HB3	1:A:198:TRP:HZ3	1.82	0.44
1:B:23:VAL:O	1:B:54:ILE:N	2.40	0.44
1:B:295:MET:HE1	1:B:338:LEU:HA	1.99	0.44
1:A:246:ARG:O	1:A:250:GLU:HG3	2.18	0.44
1:B:302:PRO:HG3	1:B:327:PRO:HG2	2.00	0.44
1:B:82:GLU:HB3	1:B:108:PHE:CZ	2.53	0.44
1:A:56:MET:SD	1:A:81:LEU:HD23	2.58	0.43
1:B:295:MET:CE	1:B:338:LEU:HA	2.48	0.43
1:B:291:ILE:HD13	1:B:350:ILE:HD12	2.01	0.43
1:B:298:THR:O	1:B:298:THR:HG23	2.18	0.43
1:A:112:ALA:HA	1:A:239:HIS:CE1	2.54	0.43
1:A:139:GLU:O	1:A:140:LYS:HB2	2.19	0.43
1:A:107:GLY:N	5:A:501:HOH:O	2.02	0.42

Continued on next page...

Continued from previous page...

Atom-1	Atom-2	Interatomic distance (Å)	Clash overlap (Å)
1:A:128:LYS:NZ	5:A:510:HOH:O	2.51	0.42
1:B:215:VAL:HG21	1:B:254:LEU:HB2	2.01	0.42
1:A:305:HIS:HE1	5:A:541:HOH:O	2.02	0.42
1:B:309:PRO:HD2	1:B:312:ASP:OD2	2.19	0.42
1:A:180:GLN:NE2	1:A:182:GLU:OE1	2.52	0.42
1:B:295:MET:HE2	1:B:341:LEU:HD22	2.02	0.42
1:B:56:MET:HE2	1:B:81:LEU:HD23	2.02	0.41
1:A:112:ALA:HB1	1:A:238:LEU:HB2	2.03	0.41
1:B:83:HIS:NE2	1:B:87:LYS:HE3	2.35	0.41
1:B:128:LYS:HG3	1:B:129:PHE:N	2.35	0.41
1:A:19:ARG:HE	1:A:19:ARG:HB2	1.50	0.41
1:A:349[B]:ASN:OD1	5:A:503:HOH:O	2.22	0.41
1:A:349[A]:ASN:O	1:A:353:VAL:HG23	2.20	0.41
1:B:147:SER:HB3	1:B:150:ARG:HD2	2.02	0.41
1:A:179:GLU:C	1:A:181:GLN:H	2.24	0.41
1:A:215:VAL:HG21	1:A:254:LEU:HB2	2.03	0.40
1:B:212:MET:CE	1:B:283:TRP:HH2	2.35	0.40
1:B:141:SER:HB2	1:B:161:LEU:HD22	2.04	0.40

There are no symmetry-related clashes.

5.3 Torsion angles [i](#)

5.3.1 Protein backbone [i](#)

In the following table, the Percentiles column shows the percent Ramachandran outliers of the chain as a percentile score with respect to all X-ray entries followed by that with respect to entries of similar resolution.

The Analysed column shows the number of residues for which the backbone conformation was analysed, and the total number of residues.

Mol	Chain	Analysed	Favoured	Allowed	Outliers	Percentiles	
1	A	329/364 (90%)	317 (96%)	11 (3%)	1 (0%)	41	31
1	B	322/364 (88%)	309 (96%)	12 (4%)	1 (0%)	41	31
All	All	651/728 (89%)	626 (96%)	23 (4%)	2 (0%)	41	31

All (2) Ramachandran outliers are listed below:

Mol	Chain	Res	Type
1	A	180	GLN
1	B	74	LYS

5.3.2 Protein sidechains [i](#)

In the following table, the Percentiles column shows the percent sidechain outliers of the chain as a percentile score with respect to all X-ray entries followed by that with respect to entries of similar resolution.

The Analysed column shows the number of residues for which the sidechain conformation was analysed, and the total number of residues.

Mol	Chain	Analysed	Rotameric	Outliers	Percentiles
1	A	280/305 (92%)	279 (100%)	1 (0%)	91 91
1	B	274/305 (90%)	272 (99%)	2 (1%)	84 84
All	All	554/610 (91%)	551 (100%)	3 (0%)	88 89

All (3) residues with a non-rotameric sidechain are listed below:

Mol	Chain	Res	Type
1	A	19	ARG
1	B	227	LYS
1	B	356	GLN

Sometimes sidechains can be flipped to improve hydrogen bonding and reduce clashes. There are no such sidechains identified.

5.3.3 RNA [i](#)

There are no RNA molecules in this entry.

5.4 Non-standard residues in protein, DNA, RNA chains [i](#)

There are no non-standard protein/DNA/RNA residues in this entry.

5.5 Carbohydrates [i](#)

There are no monosaccharides in this entry.

5.6 Ligand geometry

8 ligands are modelled in this entry.

In the following table, the Counts columns list the number of bonds (or angles) for which Mogul statistics could be retrieved, the number of bonds (or angles) that are observed in the model and the number of bonds (or angles) that are defined in the Chemical Component Dictionary. The Link column lists molecule types, if any, to which the group is linked. The Z score for a bond length (or angle) is the number of standard deviations the observed value is removed from the expected value. A bond length (or angle) with $|Z| > 2$ is considered an outlier worth inspection. RMSZ is the root-mean-square of all Z scores of the bond lengths (or angles).

Mol	Type	Chain	Res	Link	Bond lengths			Bond angles		
					Counts	RMSZ	# Z > 2	Counts	RMSZ	# Z > 2
3	GOL	B	402	-	5,5,5	0.97	0	5,5,5	0.97	0
3	GOL	A	404	-	5,5,5	1.34	1 (20%)	5,5,5	0.74	0
4	EDO	B	403	-	3,3,3	0.49	0	2,2,2	0.30	0
4	EDO	B	404	-	3,3,3	0.50	0	2,2,2	0.20	0
2	ZWW	A	401	-	70,79,79	2.65	17 (24%)	67,112,112	1.74	13 (19%)
3	GOL	A	403	-	5,5,5	1.30	0	5,5,5	0.64	0
3	GOL	A	402	-	5,5,5	0.78	0	5,5,5	0.96	0
2	ZWW	B	401	-	70,79,79	2.78	18 (25%)	67,112,112	1.17	4 (5%)

In the following table, the Chirals column lists the number of chiral outliers, the number of chiral centers analysed, the number of these observed in the model and the number defined in the Chemical Component Dictionary. Similar counts are reported in the Torsion and Rings columns. '-' means no outliers of that kind were identified.

Mol	Type	Chain	Res	Link	Chirals	Torsions	Rings
3	GOL	B	402	-	-	1/4/4/4	-
3	GOL	A	404	-	-	0/4/4/4	-
4	EDO	B	403	-	-	0/1/1/1	-
4	EDO	B	404	-	-	1/1/1/1	-
2	ZWW	A	401	-	-	20/53/61/61	0/5/5/5
3	GOL	A	403	-	-	0/4/4/4	-
3	GOL	A	402	-	-	0/4/4/4	-
2	ZWW	B	401	-	-	13/53/61/61	0/5/5/5

All (36) bond length outliers are listed below:

Mol	Chain	Res	Type	Atoms	Z	Observed(Å)	Ideal(Å)
2	B	401	ZWW	C22-C21	9.59	1.58	1.51
2	A	401	ZWW	C15-C14	9.00	1.58	1.51
2	B	401	ZWW	C22-C23	8.45	1.57	1.51

Continued on next page...

Continued from previous page...

Mol	Chain	Res	Type	Atoms	Z	Observed(Å)	Ideal(Å)
2	B	401	ZWW	C15-C14	8.24	1.57	1.51
2	A	401	ZWW	C8-C9	7.63	1.57	1.51
2	B	401	ZWW	C41-C28	7.49	1.57	1.51
2	A	401	ZWW	C22-C21	7.32	1.57	1.51
2	B	401	ZWW	C41-C42	6.76	1.56	1.51
2	A	401	ZWW	C22-C23	6.68	1.56	1.51
2	B	401	ZWW	C8-C9	6.04	1.56	1.51
2	A	401	ZWW	C41-C28	5.90	1.56	1.51
2	A	401	ZWW	C41-C42	5.76	1.55	1.51
2	B	401	ZWW	C15-C16	5.74	1.55	1.51
2	A	401	ZWW	C15-C16	5.48	1.55	1.51
2	A	401	ZWW	C48-C44	4.28	1.59	1.51
2	B	401	ZWW	C48-C44	4.09	1.59	1.51
2	A	401	ZWW	C29-C27	4.03	1.58	1.52
2	A	401	ZWW	C46-C43	3.52	1.59	1.51
2	B	401	ZWW	C46-C43	3.44	1.59	1.51
2	A	401	ZWW	C11-C10	2.91	1.58	1.51
2	B	401	ZWW	C29-C27	2.86	1.56	1.52
2	B	401	ZWW	C11-C10	2.78	1.58	1.51
2	B	401	ZWW	C45-N5	-2.71	1.32	1.36
2	A	401	ZWW	C8-C7	2.66	1.53	1.51
2	A	401	ZWW	C45-N5	-2.55	1.32	1.36
2	B	401	ZWW	C32-C20	2.42	1.55	1.52
2	A	401	ZWW	C33-C34	2.34	1.56	1.50
2	B	401	ZWW	C4-C5	2.29	1.55	1.51
3	A	404	GOL	C1-C2	2.27	1.61	1.51
2	A	401	ZWW	C30-C31	2.17	1.55	1.50
2	B	401	ZWW	C11-C12	2.13	1.55	1.51
2	B	401	ZWW	C1-C2	2.11	1.54	1.50
2	B	401	ZWW	C30-C31	2.11	1.55	1.50
2	A	401	ZWW	C32-C20	2.08	1.55	1.52
2	B	401	ZWW	C33-C34	2.07	1.55	1.50
2	A	401	ZWW	C4-C5	2.02	1.55	1.51

All (17) bond angle outliers are listed below:

Mol	Chain	Res	Type	Atoms	Z	Observed(°)	Ideal(°)
2	A	401	ZWW	C38-C6-C7	5.46	131.13	127.30
2	A	401	ZWW	C36-C35-C13	4.13	119.67	112.62
2	A	401	ZWW	C33-C32-C20	-3.91	105.94	112.62
2	A	401	ZWW	C39-C38-C6	3.22	118.11	112.62
2	A	401	ZWW	C11-C10-C9	3.11	129.15	126.41

Continued on next page...

Continued from previous page...

Mol	Chain	Res	Type	Atoms	Z	Observed(°)	Ideal(°)
2	A	401	ZWW	C17-C18-C19	2.81	117.58	114.21
2	A	401	ZWW	O9-C31-C30	2.51	122.10	114.03
2	A	401	ZWW	C38-C39-C40	-2.44	106.92	113.76
2	A	401	ZWW	C18-C17-C16	2.40	128.53	126.41
2	B	401	ZWW	O18-C49-C50	2.34	121.53	114.03
2	B	401	ZWW	C1-C2-C3	-2.30	124.45	129.47
2	A	401	ZWW	C4-C3-C2	2.12	128.28	126.41
2	A	401	ZWW	O7-C26-C25	2.09	121.95	114.02
2	A	401	ZWW	C43-C46-C47	2.09	116.71	114.21
2	A	401	ZWW	C1-C2-C3	-2.09	124.92	129.47
2	B	401	ZWW	O12-C34-C33	2.05	120.63	114.03
2	B	401	ZWW	O9-C31-C30	2.02	120.52	114.03

There are no chirality outliers.

All (35) torsion outliers are listed below:

Mol	Chain	Res	Type	Atoms
2	A	401	ZWW	C20-C21-C22-C23
2	A	401	ZWW	C39-C38-C6-C3
2	A	401	ZWW	C39-C38-C6-C7
2	B	401	ZWW	C20-C21-C22-C23
2	B	401	ZWW	C39-C38-C6-C3
2	B	401	ZWW	C39-C38-C6-C7
2	B	401	ZWW	C6-C38-C39-C40
2	A	401	ZWW	C3-C4-C5-O2
2	A	401	ZWW	C17-C18-C19-O6
2	A	401	ZWW	C3-C4-C5-O1
2	A	401	ZWW	C17-C18-C19-O5
2	A	401	ZWW	C24-C25-C26-O7
2	B	401	ZWW	C24-C25-C26-O8
2	A	401	ZWW	C6-C38-C39-C40
2	A	401	ZWW	C24-C25-C26-O8
2	B	401	ZWW	C24-C25-C26-O7
2	B	401	ZWW	C38-C39-C40-O16
2	B	401	ZWW	C17-C18-C19-O5
2	A	401	ZWW	C43-C46-C47-O19
2	B	401	ZWW	C17-C18-C19-O6
2	B	401	ZWW	C38-C39-C40-O15
2	A	401	ZWW	C38-C39-C40-O16
3	B	402	GOL	O1-C1-C2-C3
2	A	401	ZWW	C10-C11-C12-O3
2	A	401	ZWW	C10-C11-C12-O4

Continued on next page...

Continued from previous page...

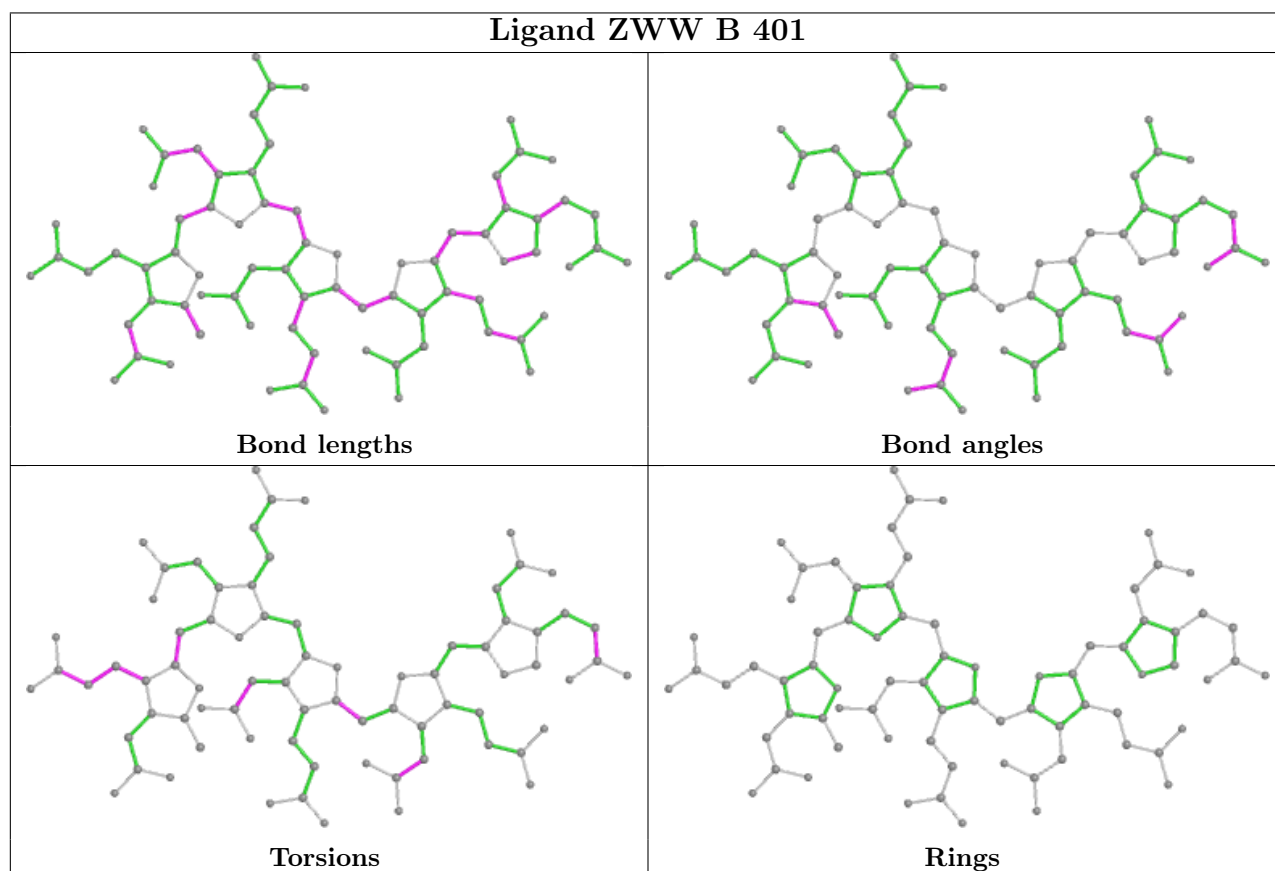
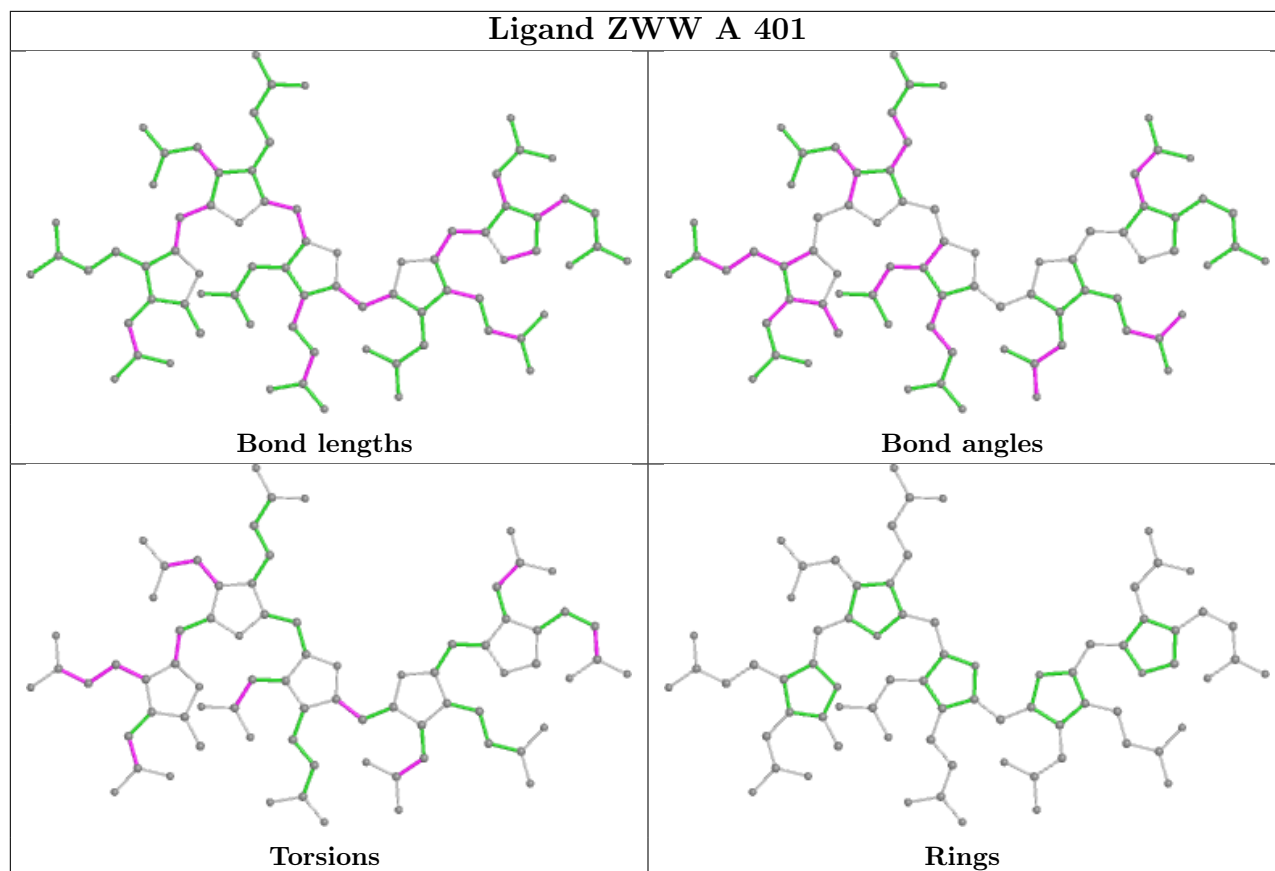
Mol	Chain	Res	Type	Atoms
2	B	401	ZWW	O17-C49-C50-C48
2	A	401	ZWW	C43-C46-C47-O20
4	B	404	EDO	O1-C1-C2-O2
2	A	401	ZWW	C38-C39-C40-O15
2	B	401	ZWW	O18-C49-C50-C48
2	A	401	ZWW	C6-C7-C8-C9
2	B	401	ZWW	C6-C7-C8-C9
2	A	401	ZWW	O18-C49-C50-C48
2	A	401	ZWW	C9-C10-C11-C12
2	A	401	ZWW	O17-C49-C50-C48

There are no ring outliers.

1 monomer is involved in 1 short contact:

Mol	Chain	Res	Type	Clashes	Symm-Clashes
2	B	401	ZWW	1	0

The following is a two-dimensional graphical depiction of Mogul quality analysis of bond lengths, bond angles, torsion angles, and ring geometry for all instances of the Ligand of Interest. In addition, ligands with molecular weight > 250 and outliers as shown on the validation Tables will also be included. For torsion angles, if less than 5% of the Mogul distribution of torsion angles is within 10 degrees of the torsion angle in question, then that torsion angle is considered an outlier. Any bond that is central to one or more torsion angles identified as an outlier by Mogul will be highlighted in the graph. For rings, the root-mean-square deviation (RMSD) between the ring in question and similar rings identified by Mogul is calculated over all ring torsion angles. If the average RMSD is greater than 60 degrees and the minimal RMSD between the ring in question and any Mogul-identified rings is also greater than 60 degrees, then that ring is considered an outlier. The outliers are highlighted in purple. The color gray indicates Mogul did not find sufficient equivalents in the CSD to analyse the geometry.



5.7 Other polymers [i](#)

There are no such residues in this entry.

5.8 Polymer linkage issues [i](#)

There are no chain breaks in this entry.

6 Fit of model and data

6.1 Protein, DNA and RNA chains

In the following table, the column labelled ‘#RSRZ > 2’ contains the number (and percentage) of RSRZ outliers, followed by percent RSRZ outliers for the chain as percentile scores relative to all X-ray entries and entries of similar resolution. The OWAB column contains the minimum, median, 95th percentile and maximum values of the occupancy-weighted average B-factor per residue. The column labelled ‘Q < 0.9’ lists the number of (and percentage) of residues with an average occupancy less than 0.9.

Mol	Chain	Analysed	<RSRZ>	#RSRZ>2	OWAB(Å ²)	Q<0.9
1	A	330/364 (90%)	0.38	7 (2%) 63 66	33, 51, 86, 125	0
1	B	326/364 (89%)	1.28	72 (22%) 0 0	49, 79, 135, 186	0
All	All	656/728 (90%)	0.83	79 (12%) 4 4	33, 64, 119, 186	0

All (79) RSRZ outliers are listed below:

Mol	Chain	Res	Type	RSRZ
1	B	304	GLN	12.8
1	B	303	ALA	11.1
1	B	308	GLY	10.9
1	B	309	PRO	9.5
1	B	305	HIS	8.8
1	B	311	ASP	8.1
1	B	302	PRO	6.8
1	B	300	HIS	6.5
1	B	312	ASP	6.3
1	B	57	SER	6.0
1	B	306	GLU	6.0
1	B	329	LEU	6.0
1	B	310	GLU	5.9
1	B	299	ILE	5.8
1	B	55	ALA	5.6
1	B	76	LEU	5.3
1	B	56	MET	5.1
1	B	307	ASP	5.0
1	B	301	VAL	4.8
1	B	273	ASP	4.7
1	B	348	LYS	4.5
1	B	326	GLY	4.4
1	B	297	ALA	4.2
1	B	257	LEU	4.1

Continued on next page...

Continued from previous page...

Mol	Chain	Res	Type	RSRZ
1	B	85	LEU	4.1
1	B	83	HIS	4.0
1	B	357	LEU	4.0
1	B	73	GLU	3.9
1	B	58	THR	3.9
1	B	321	ARG	3.8
1	B	89	GLU	3.6
1	B	77	PHE	3.3
1	A	18	MET	3.3
1	B	351	LEU	3.3
1	B	88	ASN	3.2
1	B	54	ILE	3.2
1	B	27	LYS	3.2
1	B	356	GLN	3.1
1	B	333	ASN	3.1
1	B	198	TRP	3.1
1	B	343	LEU	3.0
1	B	313	PRO	3.0
1	B	87	LYS	2.9
1	B	180	GLN	2.9
1	A	358	ASN	2.9
1	B	298	THR	2.9
1	A	342	LEU	2.9
1	A	76	LEU	2.7
1	B	81	LEU	2.7
1	B	25	THR	2.7
1	B	229	GLN	2.7
1	B	20	VAL	2.6
1	B	74	LYS	2.6
1	B	175	ARG	2.6
1	B	179	GLU	2.6
1	B	227	LYS	2.6
1	B	107	GLY	2.5
1	B	325	ARG	2.5
1	A	130	VAL	2.5
1	B	263	VAL	2.5
1	B	26	ARG	2.4
1	B	327	PRO	2.4
1	A	73	GLU	2.3
1	B	352	ASP	2.3
1	B	165	SER	2.3
1	B	330	ALA	2.3

Continued on next page...

Continued from previous page...

Mol	Chain	Res	Type	RSRZ
1	B	338	LEU	2.3
1	B	52	GLU	2.3
1	B	349	ASN	2.2
1	B	176	LYS	2.2
1	B	353	VAL	2.2
1	B	294	THR	2.1
1	B	340	ASN	2.1
1	B	224	VAL	2.1
1	A	181	GLN	2.1
1	B	272	LYS	2.1
1	B	324	PRO	2.0
1	B	22	ARG	2.0
1	B	92	LEU	2.0

6.2 Non-standard residues in protein, DNA, RNA chains [i](#)

There are no non-standard protein/DNA/RNA residues in this entry.

6.3 Carbohydrates [i](#)

There are no monosaccharides in this entry.

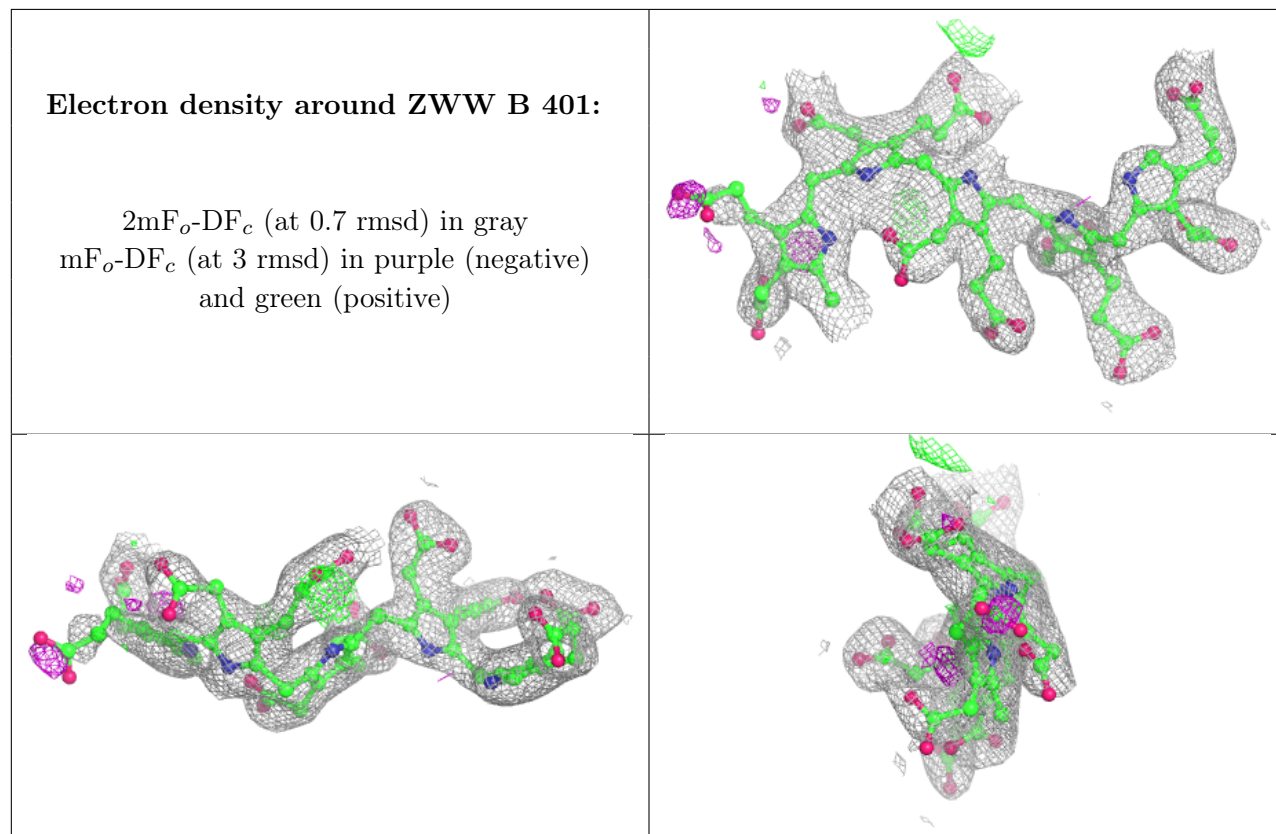
6.4 Ligands [i](#)

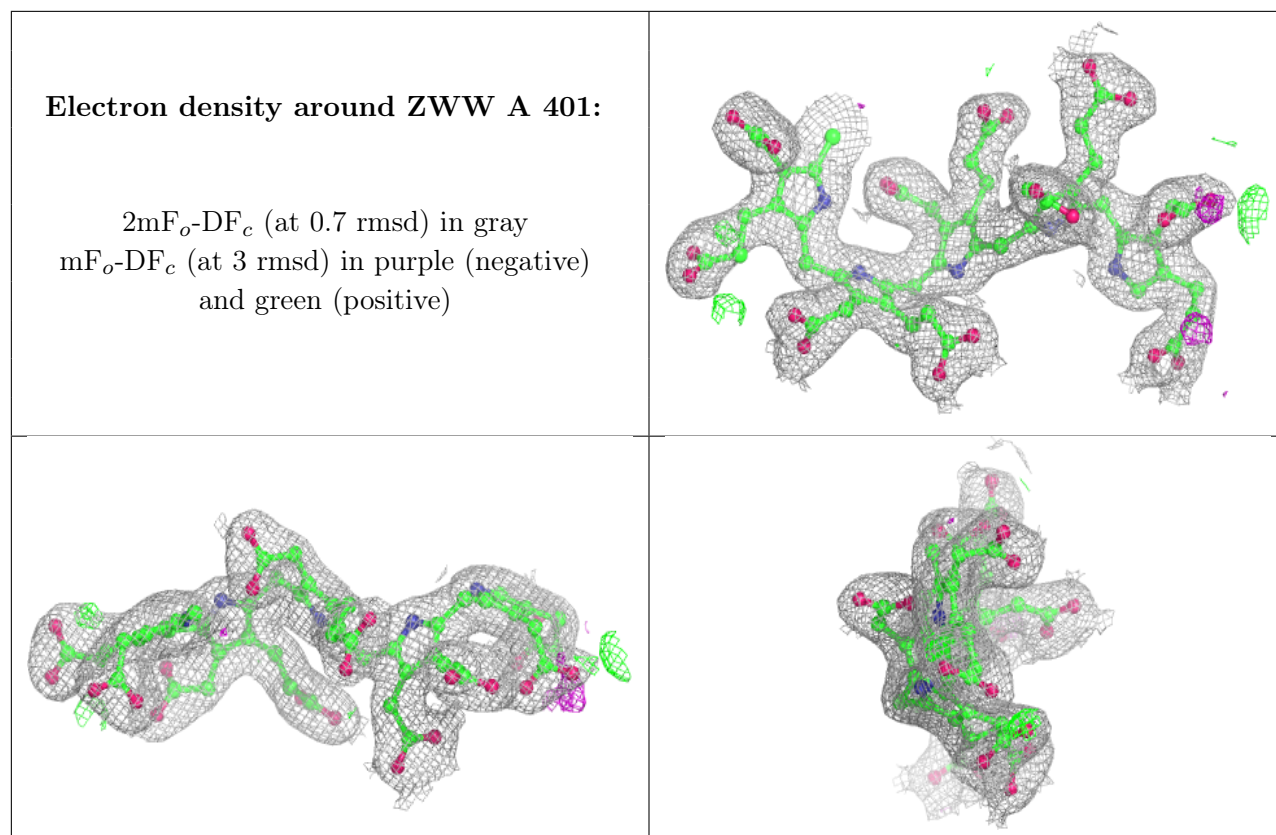
In the following table, the Atoms column lists the number of modelled atoms in the group and the number defined in the chemical component dictionary. The B-factors column lists the minimum, median, 95th percentile and maximum values of B factors of atoms in the group. The column labelled 'Q< 0.9' lists the number of atoms with occupancy less than 0.9.

Mol	Type	Chain	Res	Atoms	RSCC	RSR	B-factors(\AA^2)	Q<0.9
3	GOL	B	402	6/6	0.79	0.30	81,88,93,94	0
4	EDO	B	403	4/4	0.82	0.23	80,85,87,95	0
3	GOL	A	402	6/6	0.90	0.25	73,82,85,89	0
2	ZWW	B	401	75/75	0.91	0.14	51,75,107,117	0
4	EDO	B	404	4/4	0.93	0.14	68,82,99,99	0
2	ZWW	A	401	75/75	0.94	0.12	35,46,75,80	0
3	GOL	A	403	6/6	0.95	0.17	39,56,65,75	0
3	GOL	A	404	6/6	0.96	0.12	44,49,50,51	0

The following is a graphical depiction of the model fit to experimental electron density of all

instances of the Ligand of Interest. In addition, ligands with molecular weight > 250 and outliers as shown on the geometry validation Tables will also be included. Each fit is shown from different orientation to approximate a three-dimensional view.





6.5 Other polymers [i](#)

There are no such residues in this entry.