



# Full wwPDB X-ray Structure Validation Report ⓘ

Feb 21, 2024 – 05:06 AM EST

PDB ID : 4POP  
Title : ThiT with LMG139 bound  
Authors : Swier, L.J.Y.M.; Guskov, A.; Slotboom, D.J.  
Deposited on : 2014-02-26  
Resolution : 2.20 Å(reported)

This is a Full wwPDB X-ray Structure Validation Report for a publicly released PDB entry.

We welcome your comments at [validation@mail.wwpdb.org](mailto:validation@mail.wwpdb.org)

A user guide is available at

<https://www.wwpdb.org/validation/2017/XrayValidationReportHelp>

with specific help available everywhere you see the ⓘ symbol.

The types of validation reports are described at

<http://www.wwpdb.org/validation/2017/FAQs#types>.

---

The following versions of software and data (see [references ⓘ](#)) were used in the production of this report:

MolProbity : 4.02b-467  
Mogul : 1.8.5 (274361), CSD as541be (2020)  
Xtriage (Phenix) : 1.13  
EDS : 2.36  
buster-report : 1.1.7 (2018)  
Percentile statistics : 20191225.v01 (using entries in the PDB archive December 25th 2019)  
Refmac : 5.8.0158  
CCP4 : 7.0.044 (Gargrove)  
Ideal geometry (proteins) : Engh & Huber (2001)  
Ideal geometry (DNA, RNA) : Parkinson et al. (1996)  
Validation Pipeline (wwPDB-VP) : 2.36

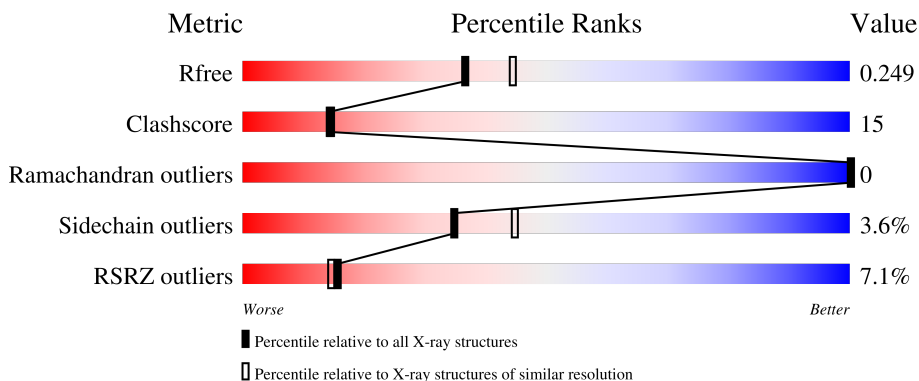
# 1 Overall quality at a glance

The following experimental techniques were used to determine the structure:

*X-RAY DIFFRACTION*

The reported resolution of this entry is 2.20 Å.

Percentile scores (ranging between 0-100) for global validation metrics of the entry are shown in the following graphic. The table shows the number of entries on which the scores are based.



Metric	Whole archive (#Entries)	Similar resolution (#Entries, resolution range(Å))
$R_{free}$	130704	4898 (2.20-2.20)
Clashscore	141614	5594 (2.20-2.20)
Ramachandran outliers	138981	5503 (2.20-2.20)
Sidechain outliers	138945	5504 (2.20-2.20)
RSRZ outliers	127900	4800 (2.20-2.20)

The table below summarises the geometric issues observed across the polymeric chains and their fit to the electron density. The red, orange, yellow and green segments of the lower bar indicate the fraction of residues that contain outliers for  $\geq 3$ , 2, 1 and 0 types of geometric quality criteria respectively. A grey segment represents the fraction of residues that are not modelled. The numeric value for each fraction is indicated below the corresponding segment, with a dot representing fractions  $\leq 5\%$ . The upper red bar (where present) indicates the fraction of residues that have poor fit to the electron density. The numeric value is given above the bar.

Mol	Chain	Length	Quality of chain
1	A	192	 5% 78% 12% • 8%
1	B	192	 8% 82% 9% • 8%

The following table lists non-polymeric compounds, carbohydrate monomers and non-standard residues in protein, DNA, RNA chains that are outliers for geometric or electron-density-fit criteria:

Mol	Type	Chain	Res	Chirality	Geometry	Clashes	Electron density
5	PEG	A	215	-	-	X	-
5	PEG	B	215	-	-	X	-
6	PG4	A	220	-	-	X	-
6	PG4	B	218	-	-	X	-
7	1PE	A	222	-	-	X	-

## 2 Entry composition [i](#)

There are 11 unique types of molecules in this entry. The entry contains 3367 atoms, of which 0 are hydrogens and 0 are deuteriums.

In the tables below, the ZeroOcc column contains the number of atoms modelled with zero occupancy, the AltConf column contains the number of residues with at least one atom in alternate conformation and the Trace column contains the number of residues modelled with at most 2 atoms.

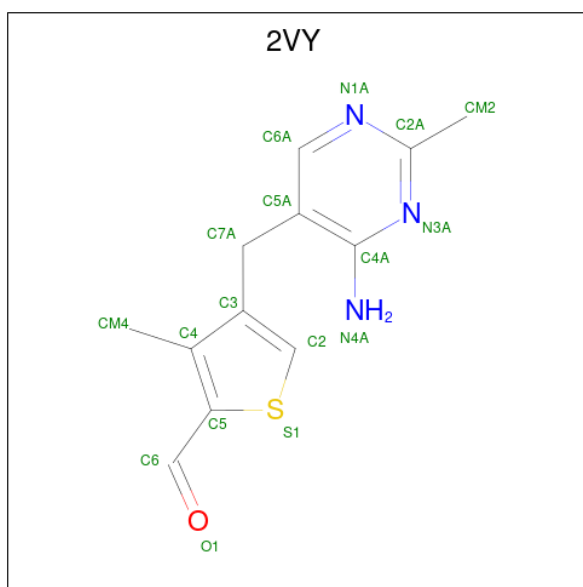
- Molecule 1 is a protein called Thiamine transporter ThiT.

Mol	Chain	Residues	Atoms					ZeroOcc	AltConf	Trace
			Total	C	N	O	S			
1	A	177	1377	945	214	215	3	0	0	0
1	B	176	1375	941	215	216	3	0	1	0

There are 20 discrepancies between the modelled and reference sequences:

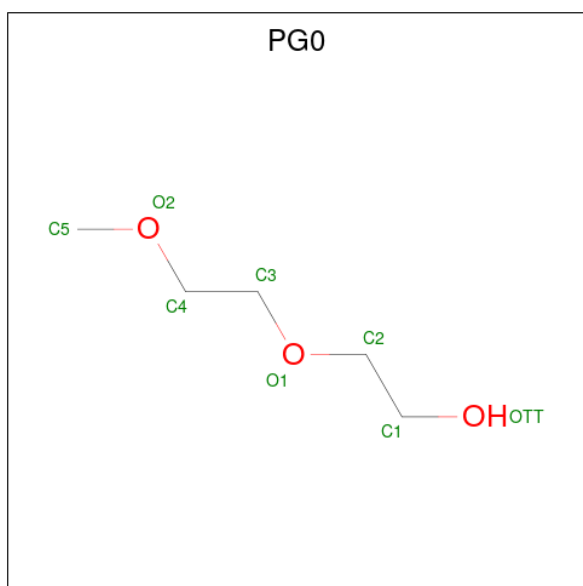
Chain	Residue	Modelled	Actual	Comment	Reference
A	-9	MET	-	initiating methionine	UNP A2RI47
A	-8	HIS	-	expression tag	UNP A2RI47
A	-7	HIS	-	expression tag	UNP A2RI47
A	-6	HIS	-	expression tag	UNP A2RI47
A	-5	HIS	-	expression tag	UNP A2RI47
A	-4	HIS	-	expression tag	UNP A2RI47
A	-3	HIS	-	expression tag	UNP A2RI47
A	-2	HIS	-	expression tag	UNP A2RI47
A	-1	HIS	-	expression tag	UNP A2RI47
A	0	ALA	-	expression tag	UNP A2RI47
B	-9	MET	-	initiating methionine	UNP A2RI47
B	-8	HIS	-	expression tag	UNP A2RI47
B	-7	HIS	-	expression tag	UNP A2RI47
B	-6	HIS	-	expression tag	UNP A2RI47
B	-5	HIS	-	expression tag	UNP A2RI47
B	-4	HIS	-	expression tag	UNP A2RI47
B	-3	HIS	-	expression tag	UNP A2RI47
B	-2	HIS	-	expression tag	UNP A2RI47
B	-1	HIS	-	expression tag	UNP A2RI47
B	0	ALA	-	expression tag	UNP A2RI47

- Molecule 2 is 4-[(4-amino-2-methylpyrimidin-5-yl)methyl]-3-methylthiophene-2-carbaldehyde (three-letter code: 2VY) (formula: C<sub>12</sub>H<sub>13</sub>N<sub>3</sub>OS).



Mol	Chain	Residues	Atoms					ZeroOcc	AltConf
			Total	C	N	O	S		
2	A	1	17	12	3	1	1	0	0
2	B	1	17	12	3	1	1	0	0

- Molecule 3 is 2-(2-METHOXYETHOXY)ETHANOL (three-letter code: PG0) (formula:  $C_5H_{12}O_3$ ).



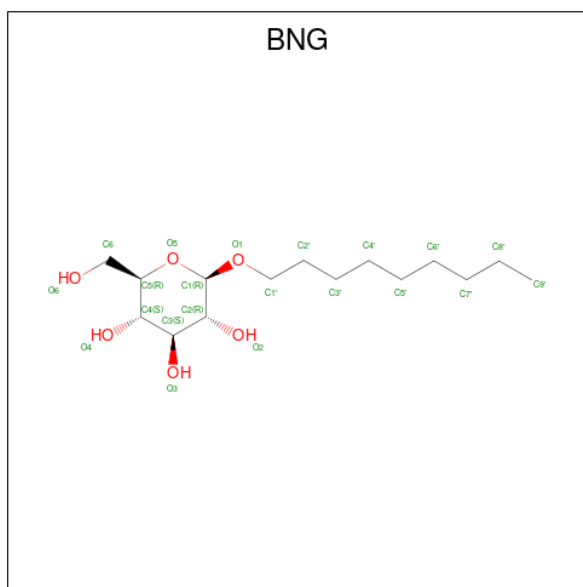
Mol	Chain	Residues	Atoms			ZeroOcc	AltConf
			Total	C	O		
3	A	1	8	5	3	0	0

*Continued on next page...*

Continued from previous page...

Mol	Chain	Residues	Atoms	ZeroOcc	AltConf
3	A	1	Total C O 8 5 3	0	0
3	B	1	Total C O 8 5 3	0	0

- Molecule 4 is nonyl beta-D-glucopyranoside (three-letter code: BNG) (formula: C<sub>15</sub>H<sub>30</sub>O<sub>6</sub>).



Mol	Chain	Residues	Atoms	ZeroOcc	AltConf
4	A	1	Total C O 21 15 6	0	0
4	A	1	Total C O 21 15 6	0	0
4	A	1	Total C O 21 15 6	0	0
4	B	1	Total C O 21 15 6	0	0
4	B	1	Total C O 21 15 6	0	0

- Molecule 5 is DI(HYDROXYETHYL)ETHER (three-letter code: PEG) (formula: C<sub>4</sub>H<sub>10</sub>O<sub>3</sub>).



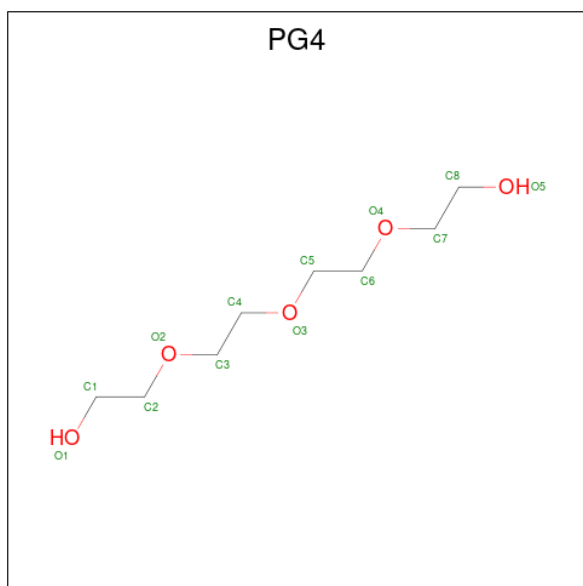
Mol	Chain	Residues	Atoms	ZeroOcc	AltConf
5	A	1	Total C O 7 4 3	0	0
5	A	1	Total C O 7 4 3	0	0
5	A	1	Total C O 7 4 3	0	0
5	A	1	Total C O 7 4 3	0	0
5	A	1	Total C O 7 4 3	0	0
5	A	1	Total C O 7 4 3	0	0
5	A	1	Total C O 7 4 3	0	0
5	A	1	Total C O 7 4 3	0	0
5	A	1	Total C O 7 4 3	0	0
5	A	1	Total C O 7 4 3	0	0
5	B	1	Total C O 7 4 3	0	0
5	B	1	Total C O 7 4 3	0	0
5	B	1	Total C O 7 4 3	0	0
5	B	1	Total C O 7 4 3	0	0

*Continued on next page...*

Continued from previous page...

Mol	Chain	Residues	Atoms			ZeroOcc	AltConf
5	B	1	Total	C	O	0	0
			7	4	3		
5	B	1	Total	C	O	0	0
			7	4	3		
5	B	1	Total	C	O	0	0
			7	4	3		
5	B	1	Total	C	O	0	0
			7	4	3		
5	B	1	Total	C	O	0	0
			7	4	3		
5	B	1	Total	C	O	0	0
			7	4	3		

- Molecule 6 is TETRAETHYLENE GLYCOL (three-letter code: PG4) (formula: C<sub>8</sub>H<sub>18</sub>O<sub>5</sub>).



Mol	Chain	Residues	Atoms			ZeroOcc	AltConf
6	A	1	Total	C	O	0	0
			13	8	5		
6	A	1	Total	C	O	0	0
			13	8	5		
6	A	1	Total	C	O	0	0
			13	8	5		
6	A	1	Total	C	O	0	0
			13	8	5		

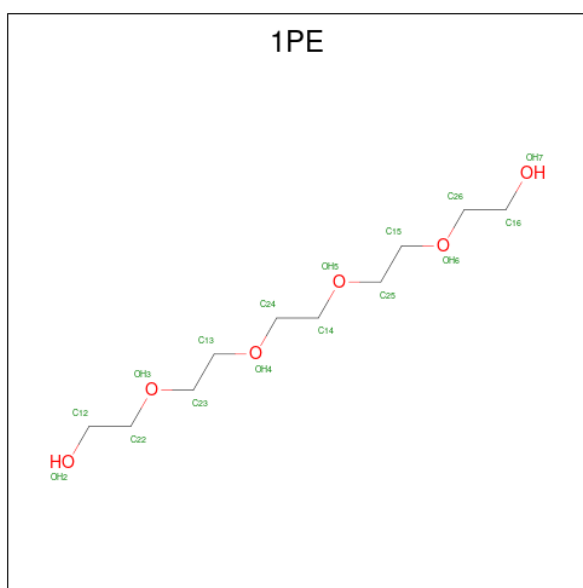
Continued on next page...



Continued from previous page...

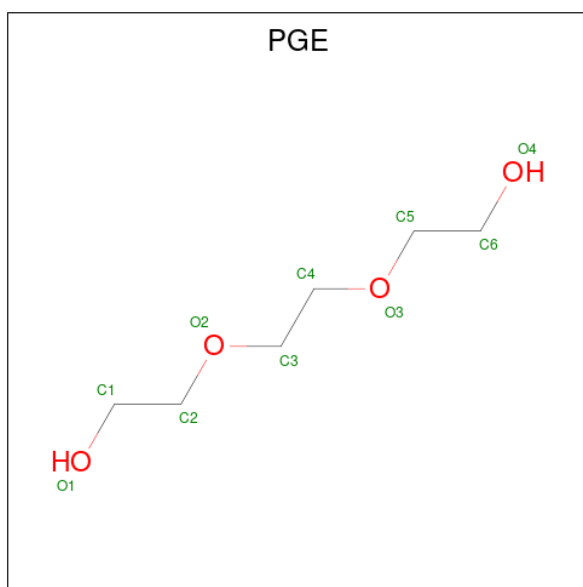
Mol	Chain	Residues	Atoms			ZeroOcc	AltConf
6	B	1	Total	C	O	0	0
			13	8	5		
6	B	1	Total	C	O	0	0
			13	8	5		
6	B	1	Total	C	O	0	0
			13	8	5		
6	B	1	Total	C	O	0	0
			13	8	5		

- Molecule 7 is PENTAETHYLENE GLYCOL (three-letter code: 1PE) (formula: C<sub>10</sub>H<sub>22</sub>O<sub>6</sub>).



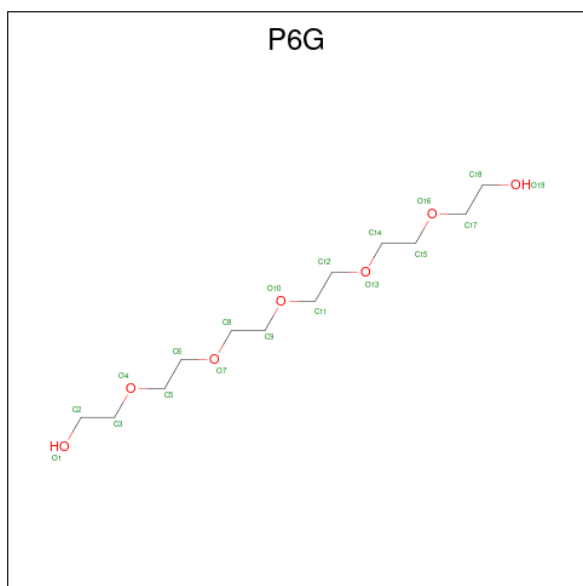
Mol	Chain	Residues	Atoms			ZeroOcc	AltConf
7	A	1	Total	C	O	0	0
			16	10	6		
7	A	1	Total	C	O	0	0
			16	10	6		
7	B	1	Total	C	O	0	0
			16	10	6		

- Molecule 8 is TRIETHYLENE GLYCOL (three-letter code: PGE) (formula: C<sub>6</sub>H<sub>14</sub>O<sub>4</sub>).



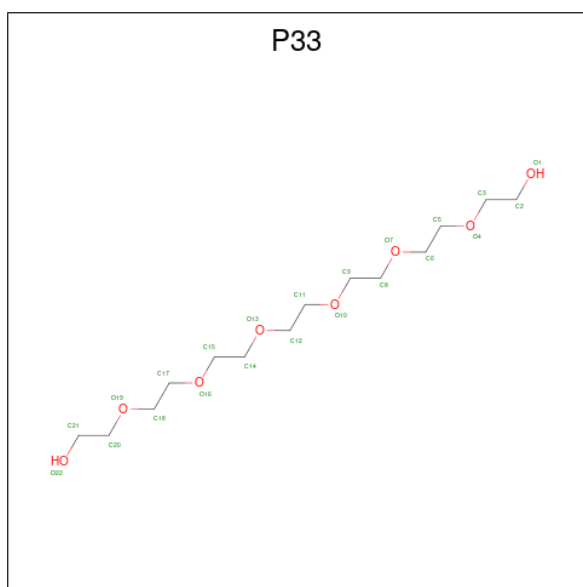
Mol	Chain	Residues	Atoms			ZeroOcc	AltConf
8	A	1	Total	C	O	0	0
			10	6	4		

- Molecule 9 is HEXAETHYLENE GLYCOL (three-letter code: P6G) (formula:  $C_{12}H_{26}O_7$ ).



Mol	Chain	Residues	Atoms			ZeroOcc	AltConf
9	A	1	Total	C	O	0	0
			19	12	7		

- Molecule 10 is 3,6,9,12,15,18-HEXAOXAIICOSANE-1,20-DIOL (three-letter code: P33) (formula:  $C_{14}H_{30}O_8$ ).



Mol	Chain	Residues	Atoms		ZeroOcc	AltConf
10	B	1	Total	C O	0	0
			22	14 8		


- Molecule 11 is water.

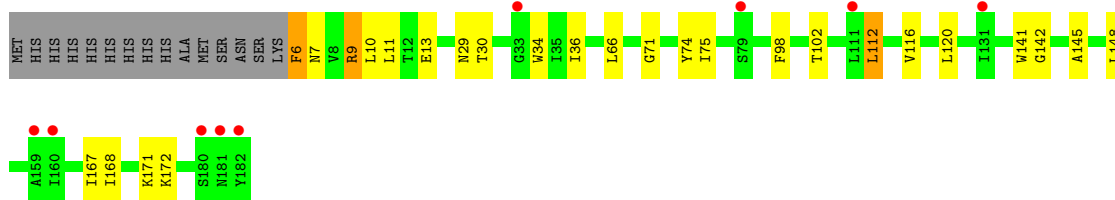
Mol	Chain	Residues	Atoms		ZeroOcc	AltConf
11	A	43	Total	O	0	1
			44	44		
11	B	45	Total	O	0	0
			45	45		

### 3 Residue-property plots [i](#)


These plots are drawn for all protein, RNA, DNA and oligosaccharide chains in the entry. The first graphic for a chain summarises the proportions of the various outlier classes displayed in the second graphic. The second graphic shows the sequence view annotated by issues in geometry and electron density. Residues are color-coded according to the number of geometric quality criteria for which they contain at least one outlier: green = 0, yellow = 1, orange = 2 and red = 3 or more. A red dot above a residue indicates a poor fit to the electron density ( $RSRZ > 2$ ). Stretches of 2 or more consecutive residues without any outlier are shown as a green connector. Residues present in the sample, but not in the model, are shown in grey.

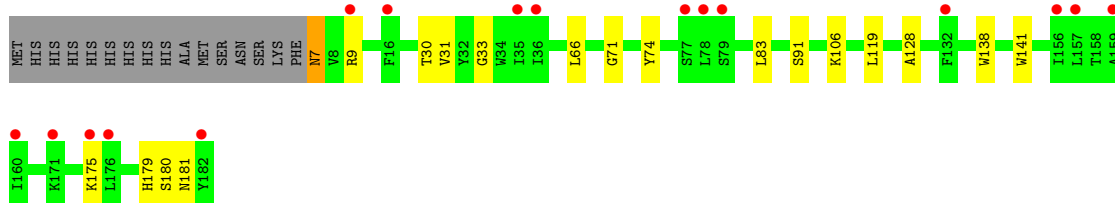
- Molecule 1: Thiamine transporter ThiT

Chain A: 



- Molecule 1: Thiamine transporter ThiT

Chain B: 



## 4 Data and refinement statistics

Property	Value	Source
Space group	C 1 2 1	Depositor
Cell constants a, b, c, $\alpha$ , $\beta$ , $\gamma$	62.61Å 84.12Å 127.15Å 90.00° 95.13° 90.00°	Depositor
Resolution (Å)	47.77 – 2.20 47.77 – 2.20	Depositor EDS
% Data completeness (in resolution range)	(Not available) (47.77-2.20) 99.2 (47.77-2.20)	Depositor EDS
$R_{merge}$	(Not available)	Depositor
$R_{sym}$	(Not available)	Depositor
$\langle I/\sigma(I) \rangle$ <sup>1</sup>	1.31 (at 2.20Å)	Xtrriage
Refinement program	PHENIX (phenix.refine: 1.8.2_1309)	Depositor
R, $R_{free}$	0.199 , 0.248 0.203 , 0.249	Depositor DCC
$R_{free}$ test set	1660 reflections (5.00%)	wwPDB-VP
Wilson B-factor (Å <sup>2</sup> )	40.2	Xtrriage
Anisotropy	0.481	Xtrriage
Bulk solvent $k_{sol}$ (e/Å <sup>3</sup> ), $B_{sol}$ (Å <sup>2</sup> )	0.29 , 64.9	EDS
L-test for twinning <sup>2</sup>	$\langle  L  \rangle = 0.46$ , $\langle L^2 \rangle = 0.29$	Xtrriage
Estimated twinning fraction	No twinning to report.	Xtrriage
$F_o, F_c$ correlation	0.94	EDS
Total number of atoms	3367	wwPDB-VP
Average B, all atoms (Å <sup>2</sup> )	58.0	wwPDB-VP

Xtrriage's analysis on translational NCS is as follows: *The largest off-origin peak in the Patterson function is 6.26% of the height of the origin peak. No significant pseudotranslation is detected.*

<sup>1</sup>Intensities estimated from amplitudes.

<sup>2</sup>Theoretical values of  $\langle |L| \rangle$ ,  $\langle L^2 \rangle$  for acentric reflections are 0.5, 0.333 respectively for untwinned datasets, and 0.375, 0.2 for perfectly twinned datasets.

## 5 Model quality

### 5.1 Standard geometry

Bond lengths and bond angles in the following residue types are not validated in this section: P6G, PG4, PGE, BNG, PEG, PG0, 2VY, 1PE, P33

The Z score for a bond length (or angle) is the number of standard deviations the observed value is removed from the expected value. A bond length (or angle) with  $|Z| > 5$  is considered an outlier worth inspection. RMSZ is the root-mean-square of all Z scores of the bond lengths (or angles).

Mol	Chain	Bond lengths		Bond angles	
		RMSZ	# Z  >5	RMSZ	# Z  >5
1	A	0.66	0/1416	0.66	0/1930
1	B	0.62	0/1413	0.63	0/1926
All	All	0.64	0/2829	0.64	0/3856

There are no bond length outliers.

There are no bond angle outliers.

There are no chirality outliers.

There are no planarity outliers.

### 5.2 Too-close contacts

In the following table, the Non-H and H(model) columns list the number of non-hydrogen atoms and hydrogen atoms in the chain respectively. The H(added) column lists the number of hydrogen atoms added and optimized by MolProbity. The Clashes column lists the number of clashes within the asymmetric unit, whereas Symm-Clashes lists symmetry-related clashes.

Mol	Chain	Non-H	H(model)	H(added)	Clashes	Symm-Clashes
1	A	1377	0	1471	38	0
1	B	1375	0	1469	23	0
2	A	17	0	13	0	0
2	B	17	0	13	0	0
3	A	16	0	24	2	0
3	B	8	0	12	0	0
4	A	63	0	90	9	0
4	B	42	0	60	5	0
5	A	70	0	90	26	0
5	B	77	0	100	25	0
6	A	52	0	72	20	0

*Continued on next page...*

*Continued from previous page...*

Mol	Chain	Non-H	H(model)	H(added)	Clashes	Symm-Clashes
6	B	65	0	90	21	0
7	A	32	0	44	7	0
7	B	16	0	22	2	0
8	A	10	0	14	1	0
9	A	19	0	26	7	0
10	B	22	0	30	2	0
11	A	44	0	0	3	0
11	B	45	0	0	3	0
All	All	3367	0	3640	107	0

The all-atom clashscore is defined as the number of clashes found per 1000 atoms (including hydrogen atoms). The all-atom clashscore for this structure is 15.

All (107) close contacts within the same asymmetric unit are listed below, sorted by their clash magnitude.

Atom-1	Atom-2	Interatomic distance (Å)	Clash overlap (Å)
5:A:215:PEG:H31	9:A:224:P6G:H121	1.43	0.98
4:A:206:BNG:O3	6:A:220:PG4:H21	1.73	0.87
6:B:218:PG4:H32	6:B:218:PG4:H61	1.54	0.87
5:B:215:PEG:O4	6:B:218:PG4:H52	1.77	0.85
7:A:222:1PE:H141	6:B:216:PG4:H32	1.56	0.85
5:A:215:PEG:H31	9:A:224:P6G:C12	2.11	0.81
4:A:206:BNG:H4	6:A:220:PG4:H51	1.65	0.78
5:B:215:PEG:H31	6:B:218:PG4:O3	1.83	0.78
1:A:171:LYS:HD2	5:A:210:PEG:H21	1.67	0.77
1:B:30:THR:HG21	5:B:215:PEG:H42	1.67	0.74
1:A:145:ALA:CB	6:A:220:PG4:H31	2.19	0.72
5:A:215:PEG:C3	9:A:224:P6G:H121	2.17	0.72
4:A:206:BNG:H62	6:A:220:PG4:H61	1.72	0.72
6:B:218:PG4:H32	6:B:218:PG4:C6	2.21	0.71
1:B:179:HIS:CE1	5:B:214:PEG:H41	2.25	0.71
1:A:142:GLY:H	6:A:220:PG4:H32	1.56	0.70
1:A:120:LEU:HB2	7:A:222:1PE:H122	1.76	0.67
1:B:138:TRP:CD2	5:B:207:PEG:H32	2.30	0.67
1:A:36:ILE:HG21	5:A:215:PEG:H11	1.77	0.67
4:B:204:BNG:H5	11:B:339:HOH:O	1.94	0.67
1:A:171:LYS:NZ	11:A:327:HOH:O	2.27	0.67
1:A:116:VAL:HG13	7:A:222:1PE:H221	1.77	0.66
5:B:215:PEG:H22	6:B:218:PG4:C4	2.25	0.66
5:B:209:PEG:H42	5:B:215:PEG:H32	1.78	0.65
1:B:138:TRP:CG	5:B:207:PEG:H32	2.31	0.65

*Continued on next page...*

*Continued from previous page...*

Atom-1	Atom-2	Interatomic distance (Å)	Clash overlap (Å)
1:A:168:ILE:HG21	5:A:213:PEG:H21	1.78	0.65
5:B:209:PEG:C4	5:B:215:PEG:H32	2.29	0.63
1:A:74:TYR:CZ	5:A:207:PEG:H41	2.36	0.61
1:A:145:ALA:HB2	6:A:220:PG4:H22	1.83	0.61
1:A:142:GLY:N	6:A:220:PG4:H32	2.16	0.60
5:B:215:PEG:H22	6:B:218:PG4:O3	2.01	0.60
1:A:167:ILE:CG2	5:A:209:PEG:H11	2.32	0.60
1:B:119:LEU:HA	6:B:217:PG4:H81	1.84	0.60
4:A:206:BNG:C6	6:A:220:PG4:H61	2.32	0.59
4:B:203:BNG:H9'3	5:B:205:PEG:H11	1.83	0.59
1:A:34:TRP:CE2	5:A:215:PEG:H32	2.38	0.59
5:B:215:PEG:H31	6:B:218:PG4:C5	2.34	0.57
1:B:91:SER:HA	5:B:210:PEG:H22	1.86	0.57
1:A:172:LYS:NZ	5:A:216:PEG:H21	2.19	0.57
1:A:98:PHE:CE2	1:A:112:LEU:HD13	2.41	0.56
1:A:145:ALA:HB2	6:A:220:PG4:H31	1.87	0.56
5:A:215:PEG:H31	9:A:224:P6G:C11	2.34	0.56
1:B:106:LYS:NZ	11:B:318:HOH:O	2.37	0.56
1:A:29:ASN:HA	8:A:223:PGE:H12	1.86	0.56
4:A:206:BNG:H2	6:A:220:PG4:H22	1.87	0.56
7:A:222:1PE:C14	6:B:216:PG4:H32	2.31	0.56
1:B:71:GLY:N	7:B:221:1PE:H261	2.20	0.56
1:A:10:LEU:HD21	5:A:211:PEG:H41	1.87	0.55
1:A:142:GLY:H	6:A:220:PG4:C3	2.19	0.55
5:B:215:PEG:H21	6:B:218:PG4:H71	1.90	0.54
1:A:120:LEU:HD13	7:A:222:1PE:H121	1.90	0.54
1:A:30:THR:OG1	5:A:215:PEG:H12	2.09	0.52
1:A:75:ILE:HG21	4:A:205:BNG:H2'2	1.92	0.52
1:A:36:ILE:CG2	5:A:215:PEG:H11	2.39	0.52
1:B:83:LEU:HD23	1:B:128:ALA:HB2	1.92	0.52
1:A:168:ILE:CG2	5:A:213:PEG:H21	2.39	0.51
4:A:206:BNG:H62	6:A:220:PG4:C6	2.39	0.51
1:A:34:TRP:CZ2	5:A:215:PEG:H32	2.46	0.51
4:B:203:BNG:H61	4:B:204:BNG:H1'2	1.93	0.50
1:B:30:THR:OG1	6:B:218:PG4:O5	2.28	0.50
6:B:218:PG4:O4	6:B:218:PG4:H42	2.12	0.50
1:A:167:ILE:HG22	5:A:209:PEG:H11	1.94	0.49
1:A:116:VAL:CG1	7:A:222:1PE:H221	2.42	0.49
1:A:9:ARG:NH1	1:A:13:GLU:OE2	2.46	0.49
1:B:74:TYR:CZ	6:B:218:PG4:H61	2.49	0.48
5:A:215:PEG:H31	9:A:224:P6G:H112	1.94	0.48

*Continued on next page...*



*Continued from previous page...*

Atom-1	Atom-2	Interatomic distance (Å)	Clash overlap (Å)
1:B:141:TRP:NE1	6:B:216:PG4:H31	2.28	0.48
4:B:203:BNG:C9'	5:B:205:PEG:H11	2.44	0.48
1:B:7:ASN:N	5:B:214:PEG:H31	2.29	0.47
1:B:91:SER:HB2	5:B:210:PEG:H11	1.97	0.47
1:B:71:GLY:CA	7:B:221:1PE:H261	2.45	0.47
4:A:206:BNG:C4	6:A:220:PG4:H51	2.41	0.46
4:A:206:BNG:H62	6:A:220:PG4:H51	1.97	0.46
5:B:215:PEG:H21	6:B:218:PG4:C7	2.44	0.46
4:B:203:BNG:H9'3	5:B:205:PEG:C1	2.46	0.46
1:A:145:ALA:CB	6:A:220:PG4:C3	2.92	0.46
5:A:216:PEG:H22	5:A:216:PEG:H42	1.37	0.46
1:B:180:SER:OG	1:B:181:ASN:O	2.23	0.46
3:A:202:PG0:OTT	6:A:218:PG4:H12	2.16	0.46
1:A:6:PHE:HD1	1:A:7:ASN:H	1.64	0.45
6:B:220:PG4:H62	6:B:220:PG4:H42	1.71	0.45
10:B:222:P33:H81	10:B:222:P33:H31	1.97	0.45
1:A:145:ALA:HB3	6:A:220:PG4:C3	2.46	0.45
5:A:211:PEG:H21	11:A:341:HOH:O	2.16	0.45
1:B:179:HIS:HE1	5:B:214:PEG:H41	1.81	0.45
1:B:179:HIS:O	11:B:336:HOH:O	2.21	0.45
1:A:141:TRP:HA	6:A:220:PG4:H41	1.98	0.45
5:A:208:PEG:H21	5:A:208:PEG:H42	1.58	0.44
1:A:74:TYR:CE2	5:A:207:PEG:H22	2.52	0.44
1:A:148:LEU:HD13	3:A:203:PG0:H41	2.00	0.43
5:A:215:PEG:C4	9:A:224:P6G:H121	2.49	0.43
1:A:71:GLY:HA2	11:A:336:HOH:O	2.19	0.43
5:A:215:PEG:C2	5:A:215:PEG:O4	2.64	0.43
7:A:222:1PE:H152	7:A:222:1PE:H161	1.03	0.42
1:A:167:ILE:HG21	5:A:209:PEG:H11	2.00	0.42
1:B:33:GLY:HA2	5:B:215:PEG:H11	2.01	0.42
5:B:215:PEG:H31	6:B:218:PG4:H52	2.01	0.42
1:A:120:LEU:HD21	6:A:217:PG4:H41	2.02	0.42
6:A:217:PG4:H42	6:A:217:PG4:H61	1.68	0.42
1:A:172:LYS:HZ2	5:A:216:PEG:H21	1.83	0.41
9:A:224:P6G:H142	9:A:224:P6G:H111	1.65	0.41
10:B:222:P33:H31	10:B:222:P33:C8	2.50	0.41
1:B:30:THR:HG21	5:B:215:PEG:C4	2.44	0.41
1:B:31:VAL:O	6:B:220:PG4:H11	2.19	0.41
1:B:74:TYR:CE1	6:B:218:PG4:H32	2.56	0.41
5:B:215:PEG:H22	6:B:218:PG4:H42	1.99	0.40
1:B:33:GLY:HA2	5:B:215:PEG:C1	2.50	0.40

There are no symmetry-related clashes.

## 5.3 Torsion angles [i](#)

### 5.3.1 Protein backbone [i](#)

In the following table, the Percentiles column shows the percent Ramachandran outliers of the chain as a percentile score with respect to all X-ray entries followed by that with respect to entries of similar resolution.

The Analysed column shows the number of residues for which the backbone conformation was analysed, and the total number of residues.

Mol	Chain	Analysed	Favoured	Allowed	Outliers	Percentiles	
1	A	175/192 (91%)	174 (99%)	1 (1%)	0	100	100
1	B	175/192 (91%)	172 (98%)	3 (2%)	0	100	100
All	All	350/384 (91%)	346 (99%)	4 (1%)	0	100	100

There are no Ramachandran outliers to report.

### 5.3.2 Protein sidechains [i](#)

In the following table, the Percentiles column shows the percent sidechain outliers of the chain as a percentile score with respect to all X-ray entries followed by that with respect to entries of similar resolution.

The Analysed column shows the number of residues for which the sidechain conformation was analysed, and the total number of residues.

Mol	Chain	Analysed	Rotameric	Outliers	Percentiles	
1	A	141/155 (91%)	135 (96%)	6 (4%)	29	36
1	B	141/155 (91%)	137 (97%)	4 (3%)	43	56
All	All	282/310 (91%)	272 (96%)	10 (4%)	35	46

All (10) residues with a non-rotameric sidechain are listed below:

Mol	Chain	Res	Type
1	A	6	PHE
1	A	9	ARG
1	A	11	LEU
1	A	66	LEU
1	A	102	THR

*Continued on next page...*

*Continued from previous page...*

Mol	Chain	Res	Type
1	A	112	LEU
1	B	7	ASN
1	B	9	ARG
1	B	66	LEU
1	B	175	LYS

Sometimes sidechains can be flipped to improve hydrogen bonding and reduce clashes. All (1) such sidechains are listed below:

Mol	Chain	Res	Type
1	A	72	HIS

### 5.3.3 RNA [i](#)

There are no RNA molecules in this entry.

## 5.4 Non-standard residues in protein, DNA, RNA chains [i](#)

There are no non-standard protein/DNA/RNA residues in this entry.

## 5.5 Carbohydrates [i](#)

There are no monosaccharides in this entry.

## 5.6 Ligand geometry [i](#)

46 ligands are modelled in this entry.

In the following table, the Counts columns list the number of bonds (or angles) for which Mogul statistics could be retrieved, the number of bonds (or angles) that are observed in the model and the number of bonds (or angles) that are defined in the Chemical Component Dictionary. The Link column lists molecule types, if any, to which the group is linked. The Z score for a bond length (or angle) is the number of standard deviations the observed value is removed from the expected value. A bond length (or angle) with  $|Z| > 2$  is considered an outlier worth inspection. RMSZ is the root-mean-square of all Z scores of the bond lengths (or angles).

Mol	Type	Chain	Res	Link	Bond lengths			Bond angles		
					Counts	RMSZ	# Z  > 2	Counts	RMSZ	# Z  > 2
5	PEG	B	214	-	6,6,6	0.56	0	5,5,5	0.32	0
5	PEG	A	207	-	6,6,6	0.60	0	5,5,5	0.48	0
7	1PE	B	221	-	15,15,15	0.69	0	14,14,14	0.42	0

Mol	Type	Chain	Res	Link	Bond lengths			Bond angles		
					Counts	RMSZ	# Z  > 2	Counts	RMSZ	# Z  > 2
5	PEG	A	212	-	6,6,6	0.57	0	5,5,5	0.65	0
9	P6G	A	224	-	18,18,18	0.76	0	17,17,17	0.43	0
4	BNG	B	203	-	21,21,21	0.79	0	26,26,26	1.02	1 (3%)
6	PG4	B	219	-	12,12,12	0.76	0	11,11,11	0.36	0
8	PGE	A	223	-	9,9,9	0.39	0	8,8,8	0.31	0
4	BNG	A	206	-	21,21,21	0.93	1 (4%)	26,26,26	1.05	3 (11%)
6	PG4	A	218	-	12,12,12	0.73	0	11,11,11	0.20	0
5	PEG	A	211	-	6,6,6	0.58	0	5,5,5	0.43	0
6	PG4	B	218	-	12,12,12	0.77	0	11,11,11	0.64	0
5	PEG	A	213	-	6,6,6	0.57	0	5,5,5	0.40	0
5	PEG	B	213	-	6,6,6	0.58	0	5,5,5	0.36	0
5	PEG	A	210	-	6,6,6	0.56	0	5,5,5	0.56	0
5	PEG	B	208	-	6,6,6	0.57	0	5,5,5	0.27	0
5	PEG	A	216	-	6,6,6	0.58	0	5,5,5	0.27	0
5	PEG	A	208	-	6,6,6	0.57	0	5,5,5	0.46	0
5	PEG	A	215	-	6,6,6	0.59	0	5,5,5	1.61	1 (20%)
5	PEG	B	212	-	6,6,6	0.59	0	5,5,5	0.27	0
2	2VY	A	201	-	16,18,18	3.02	5 (31%)	18,25,25	2.87	8 (44%)
5	PEG	B	210	-	6,6,6	0.57	0	5,5,5	0.70	0
5	PEG	B	211	-	6,6,6	0.60	0	5,5,5	0.24	0
6	PG4	A	219	-	12,12,12	0.71	0	11,11,11	0.28	0
6	PG4	A	217	-	12,12,12	0.67	0	11,11,11	0.47	0
6	PG4	A	220	-	12,12,12	0.71	0	11,11,11	0.66	0
5	PEG	B	209	-	6,6,6	0.63	0	5,5,5	0.31	0
6	PG4	B	216	-	12,12,12	0.76	0	11,11,11	0.30	0
4	BNG	B	204	-	21,21,21	0.86	0	26,26,26	1.20	1 (3%)
10	P33	B	222	-	21,21,21	0.91	0	20,20,20	0.37	0
4	BNG	A	205	-	21,21,21	0.76	0	26,26,26	1.23	4 (15%)
3	PG0	A	202	-	7,7,7	0.31	0	6,6,6	0.25	0
5	PEG	A	209	-	6,6,6	0.59	0	5,5,5	0.33	0
6	PG4	B	217	-	12,12,12	0.74	0	11,11,11	0.37	0
3	PG0	B	202	-	7,7,7	0.26	0	6,6,6	0.18	0
6	PG4	B	220	-	12,12,12	0.72	0	11,11,11	0.25	0
4	BNG	A	204	-	21,21,21	0.79	0	26,26,26	1.00	1 (3%)
5	PEG	B	215	-	6,6,6	0.59	0	5,5,5	0.66	0
5	PEG	A	214	-	6,6,6	0.58	0	5,5,5	0.38	0
7	1PE	A	222	-	15,15,15	0.73	0	14,14,14	0.51	0
3	PG0	A	203	-	7,7,7	0.29	0	6,6,6	0.29	0
7	1PE	A	221	-	15,15,15	0.76	0	14,14,14	0.27	0
5	PEG	B	206	-	6,6,6	0.58	0	5,5,5	0.45	0
5	PEG	B	207	-	6,6,6	0.56	0	5,5,5	0.35	0

Mol	Type	Chain	Res	Link	Bond lengths			Bond angles		
					Counts	RMSZ	# Z  > 2	Counts	RMSZ	# Z  > 2
5	PEG	B	205	-	6,6,6	0.62	0	5,5,5	0.26	0
2	2VY	B	201	-	16,18,18	3.42	6 (37%)	18,25,25	2.52	10 (55%)

In the following table, the Chirals column lists the number of chiral outliers, the number of chiral centers analysed, the number of these observed in the model and the number defined in the Chemical Component Dictionary. Similar counts are reported in the Torsion and Rings columns. '-' means no outliers of that kind were identified.

Mol	Type	Chain	Res	Link	Chirals	Torsions	Rings
5	PEG	B	214	-	-	2/4/4/4	-
5	PEG	A	207	-	-	0/4/4/4	-
7	1PE	B	221	-	-	6/13/13/13	-
5	PEG	A	212	-	-	4/4/4/4	-
9	P6G	A	224	-	-	7/16/16/16	-
4	BNG	B	203	-	-	3/12/32/32	0/1/1/1
6	PG4	B	219	-	-	4/10/10/10	-
8	PGE	A	223	-	-	4/7/7/7	-
4	BNG	A	206	-	-	8/12/32/32	0/1/1/1
6	PG4	A	218	-	-	8/10/10/10	-
5	PEG	A	211	-	-	2/4/4/4	-
6	PG4	B	218	-	-	6/10/10/10	-
5	PEG	A	213	-	-	2/4/4/4	-
5	PEG	B	213	-	-	3/4/4/4	-
5	PEG	A	210	-	-	2/4/4/4	-
5	PEG	B	208	-	-	3/4/4/4	-
5	PEG	A	216	-	-	2/4/4/4	-
5	PEG	A	208	-	-	1/4/4/4	-
5	PEG	A	215	-	-	2/4/4/4	-
5	PEG	B	212	-	-	1/4/4/4	-
2	2VY	A	201	-	-	1/4/6/6	0/2/2/2
5	PEG	B	210	-	-	2/4/4/4	-
5	PEG	B	211	-	-	2/4/4/4	-
6	PG4	A	219	-	-	4/10/10/10	-
6	PG4	A	217	-	-	6/10/10/10	-
6	PG4	A	220	-	-	6/10/10/10	-
5	PEG	B	209	-	-	2/4/4/4	-
6	PG4	B	216	-	-	4/10/10/10	-

Continued on next page...

Continued from previous page...

Mol	Type	Chain	Res	Link	Chirals	Torsions	Rings
4	BNG	B	204	-	-	4/12/32/32	0/1/1/1
10	P33	B	222	-	-	9/19/19/19	-
4	BNG	A	205	-	-	5/12/32/32	0/1/1/1
3	PG0	A	202	-	-	3/5/5/5	-
5	PEG	A	209	-	-	3/4/4/4	-
6	PG4	B	217	-	-	8/10/10/10	-
3	PG0	B	202	-	-	2/5/5/5	-
6	PG4	B	220	-	-	5/10/10/10	-
4	BNG	A	204	-	-	9/12/32/32	0/1/1/1
5	PEG	B	215	-	-	2/4/4/4	-
5	PEG	A	214	-	-	2/4/4/4	-
7	1PE	A	222	-	-	9/13/13/13	-
3	PG0	A	203	-	-	3/5/5/5	-
7	1PE	A	221	-	-	6/13/13/13	-
5	PEG	B	206	-	-	2/4/4/4	-
5	PEG	B	207	-	-	0/4/4/4	-
5	PEG	B	205	-	-	3/4/4/4	-
2	2VY	B	201	-	-	1/4/6/6	0/2/2/2

All (12) bond length outliers are listed below:

Mol	Chain	Res	Type	Atoms	Z	Observed(Å)	Ideal(Å)
2	B	201	2VY	C2-C3	10.04	1.43	1.37
2	A	201	2VY	C2-C3	9.50	1.42	1.37
2	B	201	2VY	O1-C6	5.66	1.41	1.21
2	A	201	2VY	O1-C6	5.32	1.39	1.21
2	B	201	2VY	C5-C6	4.86	1.53	1.48
2	B	201	2VY	C4A-N4A	3.49	1.42	1.34
2	A	201	2VY	C4A-N4A	3.02	1.41	1.34
2	A	201	2VY	C5-C6	2.74	1.51	1.48
2	B	201	2VY	C6A-C5A	2.47	1.42	1.37
2	B	201	2VY	C6A-N1A	2.26	1.39	1.34
2	A	201	2VY	C6A-C5A	2.20	1.42	1.37
4	A	206	BNG	O1-C1	2.15	1.43	1.40

All (29) bond angle outliers are listed below:

Mol	Chain	Res	Type	Atoms	Z	Observed(°)	Ideal(°)
2	A	201	2VY	C3-C2-S1	-6.75	105.07	112.26
2	A	201	2VY	O1-C6-C5	-5.96	111.92	124.92
2	B	201	2VY	O1-C6-C5	-5.83	112.21	124.92
2	B	201	2VY	C3-C2-S1	-3.95	108.05	112.26
2	A	201	2VY	C5A-C6A-N1A	-3.54	117.92	123.82
4	B	204	BNG	C1-O5-C5	-3.43	106.97	113.69
2	A	201	2VY	C6A-N1A-C2A	3.40	121.75	115.96
4	A	205	BNG	C1'-O1-C1	-3.11	108.68	113.84
2	B	201	2VY	C2A-N3A-C4A	3.09	122.90	118.08
2	B	201	2VY	C5A-C6A-N1A	-3.01	118.80	123.82
2	A	201	2VY	C7A-C3-C4	-2.94	121.23	126.49
2	B	201	2VY	CM4-C4-C3	-2.69	119.87	124.94
5	A	215	PEG	O2-C3-C4	-2.59	98.69	110.07
4	B	203	BNG	C4-C3-C2	-2.59	106.31	110.82
2	B	201	2VY	C7A-C3-C4	-2.58	121.89	126.49
2	B	201	2VY	N4A-C4A-N3A	2.57	120.67	117.03
4	A	204	BNG	C1-O5-C5	-2.52	108.74	113.69
4	A	205	BNG	C1-O5-C5	-2.36	109.05	113.69
4	A	205	BNG	C4-C3-C2	-2.36	106.71	110.82
4	A	206	BNG	C3-C4-C5	-2.31	106.11	110.24
2	B	201	2VY	C5A-C4A-N3A	-2.29	117.65	121.24
4	A	205	BNG	C1-C2-C3	-2.27	105.27	110.00
2	B	201	2VY	C6A-C5A-C4A	2.27	118.81	115.72
4	A	206	BNG	C1-O5-C5	-2.24	109.29	113.69
2	A	201	2VY	CM4-C4-C3	-2.18	120.83	124.94
4	A	206	BNG	C1'-O1-C1	2.17	117.43	113.84
2	B	201	2VY	C6A-N1A-C2A	2.14	119.61	115.96
2	A	201	2VY	C6A-C5A-C4A	2.13	118.62	115.72
2	A	201	2VY	C2A-N3A-C4A	2.05	121.28	118.08

There are no chirality outliers.

All (173) torsion outliers are listed below:

Mol	Chain	Res	Type	Atoms
4	A	204	BNG	C2-C1-O1-C1'
4	A	204	BNG	O5-C1-O1-C1'
4	A	204	BNG	C2'-C1'-O1-C1
4	A	206	BNG	O5-C1-O1-C1'
9	A	224	P6G	C11-C12-O13-C14
7	A	222	1PE	C16-C26-OH6-C15
9	A	224	P6G	C9-C8-O7-C6
6	B	218	PG4	C6-C5-O3-C4
6	A	218	PG4	C8-C7-O4-C6

*Continued on next page...*

*Continued from previous page...*

Mol	Chain	Res	Type	Atoms
6	B	220	PG4	C6-C5-O3-C4
5	B	209	PEG	C1-C2-O2-C3
5	B	213	PEG	O2-C3-C4-O4
5	A	216	PEG	C4-C3-O2-C2
5	A	208	PEG	C4-C3-O2-C2
3	A	203	PG0	O1-C3-C4-O2
9	A	224	P6G	O7-C8-C9-O10
6	B	217	PG4	O2-C3-C4-O3
4	A	205	BNG	O5-C5-C6-O6
6	A	218	PG4	O2-C3-C4-O3
6	A	219	PG4	O2-C3-C4-O3
7	A	222	1PE	OH5-C14-C24-OH4
6	A	220	PG4	O4-C7-C8-O5
6	B	217	PG4	O3-C5-C6-O4
7	A	222	1PE	OH4-C13-C23-OH3
10	B	222	P33	O4-C5-C6-O7
6	B	218	PG4	C3-C4-O3-C5
4	A	205	BNG	C4-C5-C6-O6
3	A	202	PG0	O1-C3-C4-O2
5	A	214	PEG	O1-C1-C2-O2
5	A	215	PEG	O2-C3-C4-O4
5	B	205	PEG	O2-C3-C4-O4
5	B	208	PEG	O1-C1-C2-O2
5	B	210	PEG	O2-C3-C4-O4
5	B	211	PEG	O1-C1-C2-O2
5	B	212	PEG	O2-C3-C4-O4
6	A	217	PG4	O4-C7-C8-O5
6	B	218	PG4	O4-C7-C8-O5
7	A	222	1PE	OH2-C12-C22-OH3
7	B	221	1PE	OH2-C12-C22-OH3
9	A	224	P6G	O16-C17-C18-O19
9	A	224	P6G	O13-C14-C15-O16
7	A	222	1PE	C13-C23-OH3-C22
3	A	202	PG0	OTT-C1-C2-O1
5	B	206	PEG	O1-C1-C2-O2
5	B	208	PEG	O2-C3-C4-O4
5	B	215	PEG	O2-C3-C4-O4
6	A	218	PG4	O1-C1-C2-O2
6	B	216	PG4	O1-C1-C2-O2
8	A	223	PGE	O3-C5-C6-O4
4	A	204	BNG	O1-C1'-C2'-C3'
2	A	201	2VY	C4-C3-C7A-C5A

*Continued on next page...*



*Continued from previous page...*

Mol	Chain	Res	Type	Atoms
2	B	201	2VY	C4-C3-C7A-C5A
4	B	203	BNG	C4'-C5'-C6'-C7'
8	A	223	PGE	O2-C3-C4-O3
4	A	206	BNG	O5-C5-C6-O6
9	A	224	P6G	O4-C5-C6-O7
4	A	204	BNG	C4'-C5'-C6'-C7'
4	A	204	BNG	C5'-C6'-C7'-C8'
3	B	202	PG0	OTT-C1-C2-O1
5	A	215	PEG	O1-C1-C2-O2
5	B	213	PEG	O1-C1-C2-O2
5	B	215	PEG	O1-C1-C2-O2
6	B	220	PG4	O3-C5-C6-O4
6	A	219	PG4	C5-C6-O4-C7
10	B	222	P33	O13-C14-C15-O16
7	B	221	1PE	OH4-C13-C23-OH3
6	A	217	PG4	C6-C5-O3-C4
4	A	206	BNG	C1'-C2'-C3'-C4'
4	A	206	BNG	C4'-C5'-C6'-C7'
6	A	217	PG4	O1-C1-C2-O2
4	A	206	BNG	C2'-C3'-C4'-C5'
5	A	209	PEG	O2-C3-C4-O4
6	B	218	PG4	O1-C1-C2-O2
4	A	204	BNG	C1'-C2'-C3'-C4'
5	A	212	PEG	O1-C1-C2-O2
6	B	216	PG4	O4-C7-C8-O5
6	B	219	PG4	O1-C1-C2-O2
6	B	220	PG4	O4-C7-C8-O5
4	A	205	BNG	C6'-C7'-C8'-C9'
4	B	204	BNG	C5'-C6'-C7'-C8'
6	A	220	PG4	O3-C5-C6-O4
5	A	216	PEG	O2-C3-C4-O4
7	A	222	1PE	OH7-C16-C26-OH6
4	A	204	BNG	C6'-C7'-C8'-C9'
7	A	221	1PE	C15-C25-OH5-C14
4	A	204	BNG	C2'-C3'-C4'-C5'
5	A	212	PEG	O2-C3-C4-O4
4	B	203	BNG	O1-C1'-C2'-C3'
6	A	220	PG4	O2-C3-C4-O3
4	B	204	BNG	C2'-C1'-O1-C1
5	B	205	PEG	O1-C1-C2-O2
5	B	211	PEG	O2-C3-C4-O4
10	B	222	P33	O19-C20-C21-O22

*Continued on next page...*

*Continued from previous page...*

Mol	Chain	Res	Type	Atoms
6	B	217	PG4	O1-C1-C2-O2
4	A	205	BNG	C3'-C4'-C5'-C6'
5	B	206	PEG	O2-C3-C4-O4
6	A	219	PG4	C6-C5-O3-C4
6	B	217	PG4	C6-C5-O3-C4
6	B	220	PG4	C4-C3-O2-C2
3	A	202	PG0	C4-C3-O1-C2
6	B	217	PG4	C3-C4-O3-C5
6	A	218	PG4	C3-C4-O3-C5
7	B	221	1PE	C25-C15-OH6-C26
6	A	217	PG4	C3-C4-O3-C5
7	A	221	1PE	C14-C24-OH4-C13
8	A	223	PGE	C4-C3-O2-C2
9	A	224	P6G	C6-C5-O4-C3
6	B	218	PG4	O3-C5-C6-O4
6	B	217	PG4	C8-C7-O4-C6
6	A	217	PG4	C4-C3-O2-C2
10	B	222	P33	C9-C8-O7-C6
5	B	214	PEG	C4-C3-O2-C2
6	A	220	PG4	C4-C3-O2-C2
4	A	205	BNG	O1-C1'-C2'-C3'
6	A	220	PG4	C6-C5-O3-C4
4	B	204	BNG	O5-C1-O1-C1'
5	A	213	PEG	O2-C3-C4-O4
5	A	214	PEG	O2-C3-C4-O4
7	A	222	1PE	C24-C14-OH5-C25
6	A	220	PG4	C1-C2-O2-C3
5	A	212	PEG	C4-C3-O2-C2
7	A	221	1PE	C24-C14-OH5-C25
6	B	217	PG4	C5-C6-O4-C7
5	A	209	PEG	O1-C1-C2-O2
4	B	204	BNG	C4'-C5'-C6'-C7'
7	A	222	1PE	C25-C15-OH6-C26
5	B	208	PEG	C4-C3-O2-C2
6	A	218	PG4	O4-C7-C8-O5
6	B	217	PG4	O4-C7-C8-O5
6	A	218	PG4	O3-C5-C6-O4
6	A	219	PG4	O3-C5-C6-O4
10	B	222	P33	C14-C15-O16-C17
5	A	211	PEG	O2-C3-C4-O4
7	B	221	1PE	C23-C13-OH4-C24
6	B	220	PG4	C5-C6-O4-C7

*Continued on next page...*

*Continued from previous page...*

Mol	Chain	Res	Type	Atoms
6	A	218	PG4	C1-C2-O2-C3
5	A	212	PEG	C1-C2-O2-C3
6	B	219	PG4	C1-C2-O2-C3
10	B	222	P33	C18-C17-O16-C15
5	B	210	PEG	O1-C1-C2-O2
6	B	219	PG4	C4-C3-O2-C2
3	B	202	PG0	C1-C2-O1-C3
8	A	223	PGE	C1-C2-O2-C3
5	B	209	PEG	O1-C1-C2-O2
5	A	213	PEG	C1-C2-O2-C3
7	B	221	1PE	C16-C26-OH6-C15
6	A	217	PG4	O3-C5-C6-O4
6	B	216	PG4	C1-C2-O2-C3
5	A	210	PEG	O1-C1-C2-O2
5	B	213	PEG	C4-C3-O2-C2
10	B	222	P33	O10-C11-C12-O13
5	A	210	PEG	C4-C3-O2-C2
5	B	214	PEG	O2-C3-C4-O4
5	B	205	PEG	C4-C3-O2-C2
10	B	222	P33	O7-C8-C9-O10
7	A	221	1PE	OH5-C14-C24-OH4
6	B	216	PG4	O2-C3-C4-O3
7	A	221	1PE	OH6-C15-C25-OH5
4	B	203	BNG	C5'-C6'-C7'-C8'
4	A	206	BNG	C6'-C7'-C8'-C9'
5	A	211	PEG	C1-C2-O2-C3
6	A	218	PG4	C6-C5-O3-C4
4	A	206	BNG	C5'-C6'-C7'-C8'
5	A	209	PEG	C1-C2-O2-C3
3	A	203	PG0	OTT-C1-C2-O1
3	A	203	PG0	C4-C3-O1-C2
6	B	219	PG4	O3-C5-C6-O4
7	A	222	1PE	C14-C24-OH4-C13
6	B	218	PG4	C8-C7-O4-C6
7	B	221	1PE	C12-C22-OH3-C23
4	A	206	BNG	C4-C5-C6-O6
7	A	221	1PE	OH4-C13-C23-OH3
10	B	222	P33	O16-C17-C18-O19

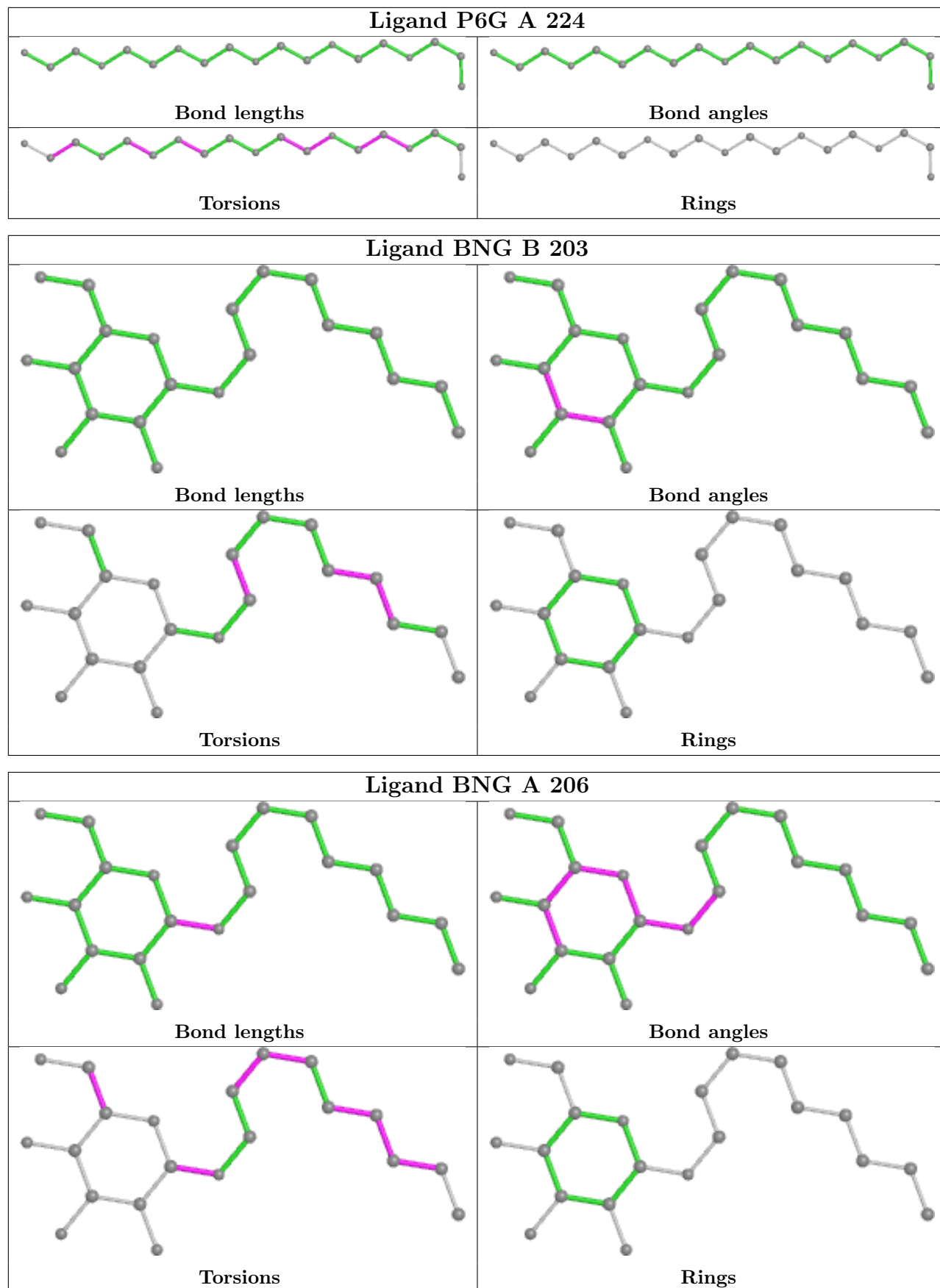
There are no ring outliers.

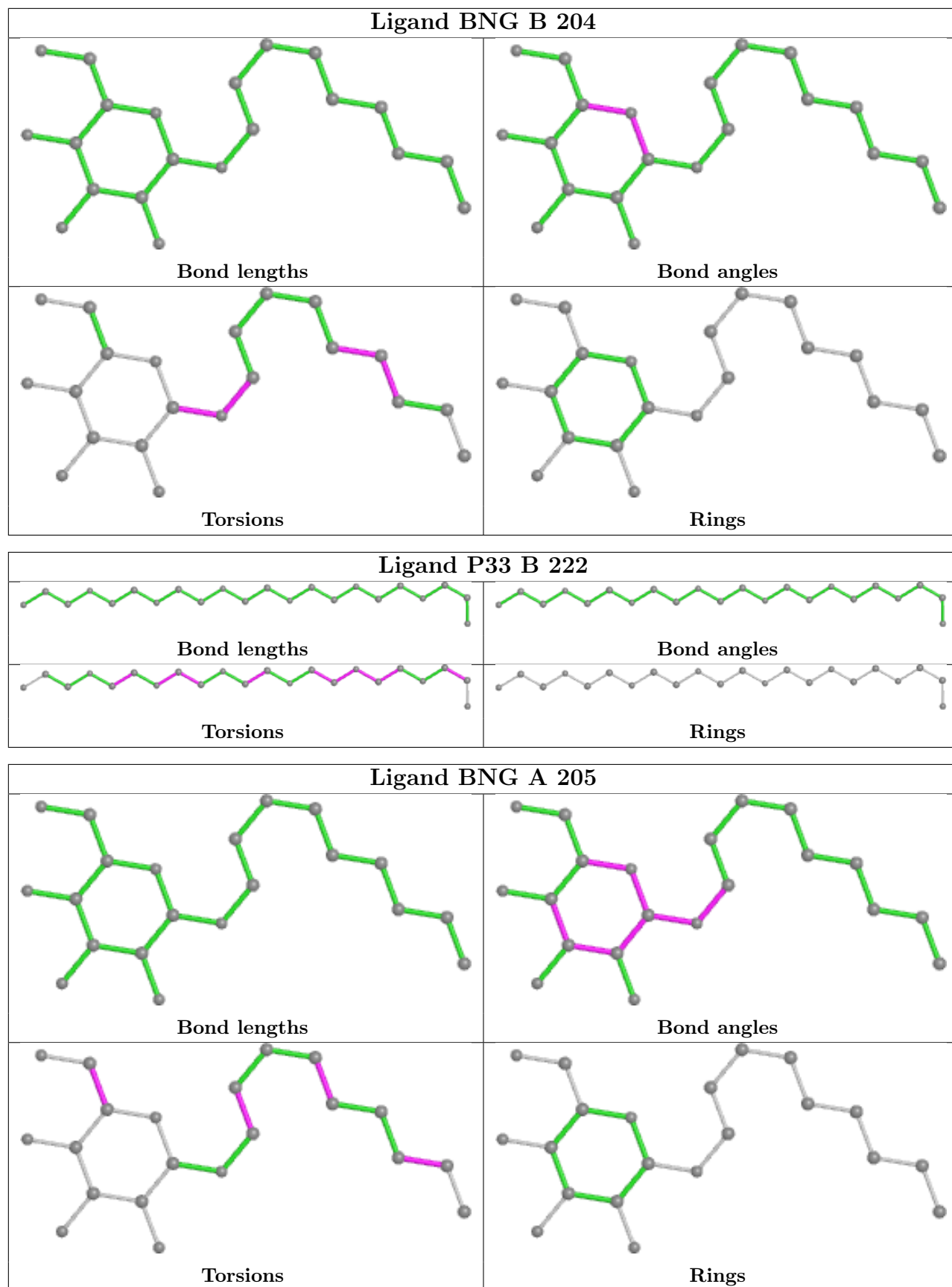
32 monomers are involved in 98 short contacts:

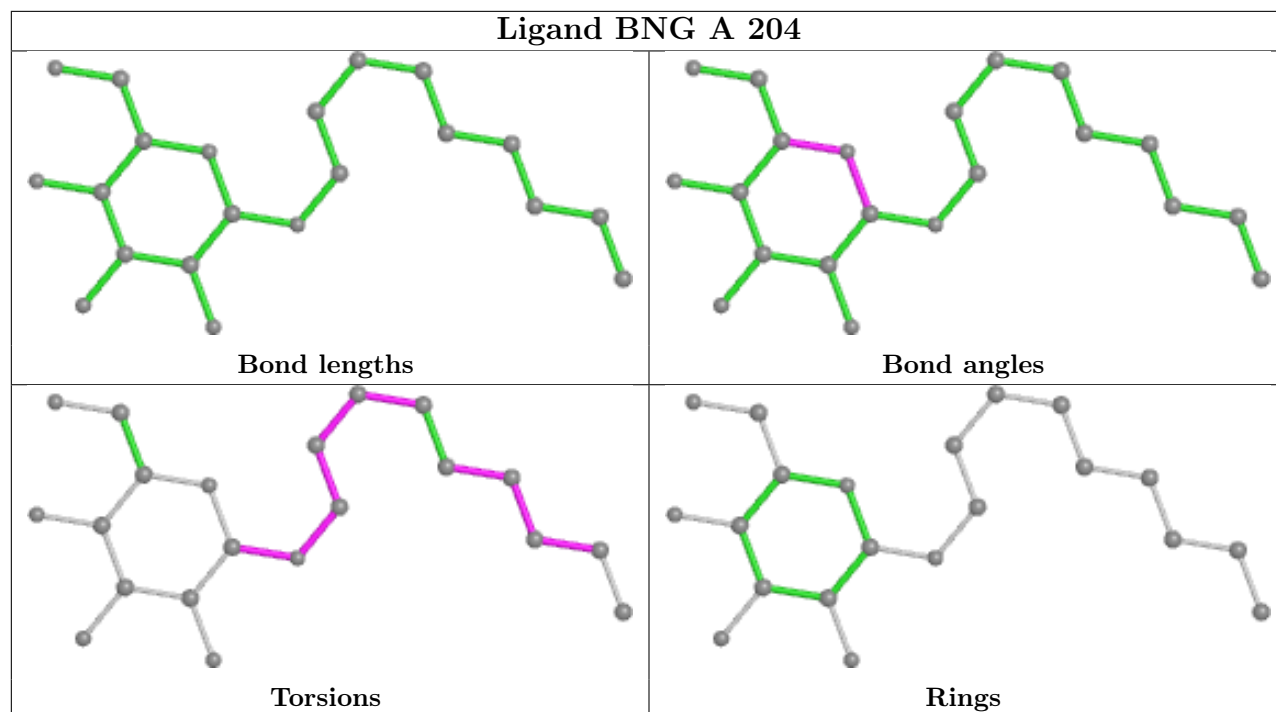
Mol	Chain	Res	Type	Clashes	Symm-Clashes
5	B	214	PEG	3	0
5	A	207	PEG	2	0
7	B	221	1PE	2	0
9	A	224	P6G	7	0
4	B	203	BNG	4	0
8	A	223	PGE	1	0
4	A	206	BNG	8	0
6	A	218	PG4	1	0
5	A	211	PEG	2	0
6	B	218	PG4	15	0
5	A	213	PEG	2	0
5	A	210	PEG	1	0
5	A	216	PEG	3	0
5	A	208	PEG	1	0
5	A	215	PEG	12	0
5	B	210	PEG	2	0
6	A	217	PG4	2	0
6	A	220	PG4	17	0
5	B	209	PEG	2	0
6	B	216	PG4	3	0
4	B	204	BNG	2	0
10	B	222	P33	2	0
4	A	205	BNG	1	0
3	A	202	PG0	1	0
5	A	209	PEG	3	0
6	B	217	PG4	1	0
6	B	220	PG4	2	0
5	B	215	PEG	15	0
7	A	222	1PE	7	0
3	A	203	PG0	1	0
5	B	207	PEG	2	0
5	B	205	PEG	3	0

The following is a two-dimensional graphical depiction of Mogul quality analysis of bond lengths, bond angles, torsion angles, and ring geometry for all instances of the Ligand of Interest. In addition, ligands with molecular weight > 250 and outliers as shown on the validation Tables will also be included. For torsion angles, if less than 5% of the Mogul distribution of torsion angles is within 10 degrees of the torsion angle in question, then that torsion angle is considered an outlier. Any bond that is central to one or more torsion angles identified as an outlier by Mogul will be highlighted in the graph. For rings, the root-mean-square deviation (RMSD) between the ring in question and similar rings identified by Mogul is calculated over all ring torsion angles. If the average RMSD is greater than 60 degrees and the minimal RMSD between the ring in question and any Mogul-identified rings is also greater than 60 degrees, then that ring is considered an outlier. The outliers are highlighted in purple. The color gray indicates Mogul did not find sufficient

equivalents in the CSD to analyse the geometry.







## 5.7 Other polymers [i](#)

There are no such residues in this entry.

## 5.8 Polymer linkage issues [i](#)

There are no chain breaks in this entry.

## 6 Fit of model and data

### 6.1 Protein, DNA and RNA chains

In the following table, the column labelled ‘#RSRZ > 2’ contains the number (and percentage) of RSRZ outliers, followed by percent RSRZ outliers for the chain as percentile scores relative to all X-ray entries and entries of similar resolution. The OWAB column contains the minimum, median, 95<sup>th</sup> percentile and maximum values of the occupancy-weighted average B-factor per residue. The column labelled ‘Q < 0.9’ lists the number of (and percentage) of residues with an average occupancy less than 0.9.

Mol	Chain	Analysed	<RSRZ>	#RSRZ>2	OWAB(Å <sup>2</sup> )	Q<0.9
1	A	177/192 (92%)	0.35	9 (5%) 28 26	31, 48, 75, 104	0
1	B	176/192 (91%)	0.47	16 (9%) 9 8	32, 50, 86, 115	0
All	All	353/384 (91%)	0.41	25 (7%) 16 14	31, 49, 80, 115	0

All (25) RSRZ outliers are listed below:

Mol	Chain	Res	Type	RSRZ
1	B	182	TYR	4.3
1	B	79	SER	4.1
1	B	16	PHE	4.0
1	A	79	SER	3.5
1	B	9	ARG	3.5
1	A	131	ILE	3.4
1	A	160	ILE	3.3
1	A	181	ASN	3.3
1	B	35	ILE	3.1
1	B	78	LEU	3.0
1	A	182	TYR	2.9
1	B	157	LEU	2.6
1	B	156	ILE	2.6
1	B	171	LYS	2.5
1	B	176	LEU	2.5
1	B	132	PHE	2.5
1	B	160	ILE	2.5
1	A	159	ALA	2.4
1	B	159	ALA	2.3
1	A	33	GLY	2.3
1	A	111	LEU	2.2
1	B	36	ILE	2.2
1	B	175	LYS	2.1
1	A	180	SER	2.1

*Continued on next page...*



*Continued from previous page...*

Mol	Chain	Res	Type	RSRZ
1	B	77	SER	2.0

## 6.2 Non-standard residues in protein, DNA, RNA chains [i](#)

There are no non-standard protein/DNA/RNA residues in this entry.

## 6.3 Carbohydrates [i](#)

There are no monosaccharides in this entry.

## 6.4 Ligands [i](#)

In the following table, the Atoms column lists the number of modelled atoms in the group and the number defined in the chemical component dictionary. The B-factors column lists the minimum, median, 95<sup>th</sup> percentile and maximum values of B factors of atoms in the group. The column labelled 'Q< 0.9' lists the number of atoms with occupancy less than 0.9.

Mol	Type	Chain	Res	Atoms	RSCC	RSR	B-factors(Å <sup>2</sup> )	Q<0.9
3	PG0	A	202	8/8	0.18	0.32	85,103,127,162	0
4	BNG	A	206	21/21	0.33	0.33	46,88,105,109	0
8	PGE	A	223	10/10	0.35	0.36	80,98,121,162	0
5	PEG	B	211	7/7	0.38	0.26	103,107,111,113	0
5	PEG	A	214	7/7	0.42	0.20	110,124,162,210	0
5	PEG	A	216	7/7	0.47	0.17	104,111,143,145	0
5	PEG	B	212	7/7	0.49	0.29	74,81,105,107	0
5	PEG	A	212	7/7	0.59	0.25	82,87,95,113	0
6	PG4	B	220	13/13	0.60	0.20	83,90,120,120	0
3	PG0	A	203	8/8	0.61	0.27	74,93,111,113	0
6	PG4	A	220	13/13	0.62	0.22	46,92,136,167	0
5	PEG	A	211	7/7	0.64	0.21	76,88,95,98	0
5	PEG	B	207	7/7	0.65	0.34	66,68,76,78	0
5	PEG	B	208	7/7	0.65	0.30	90,95,111,119	0
6	PG4	B	219	13/13	0.65	0.24	73,99,111,111	0
5	PEG	B	209	7/7	0.65	0.26	85,88,91,92	0
4	BNG	A	204	21/21	0.65	0.27	49,95,118,123	0
6	PG4	A	219	13/13	0.67	0.18	95,105,118,120	13
9	P6G	A	224	19/19	0.68	0.17	44,87,137,195	0
10	P33	B	222	22/22	0.73	0.38	42,58,92,108	22
7	1PE	A	221	16/16	0.75	0.22	67,96,107,111	0
6	PG4	B	218	13/13	0.75	0.17	58,72,82,91	0

*Continued on next page...*

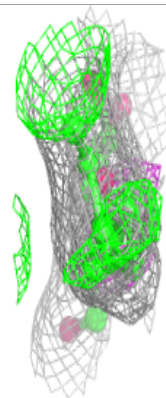
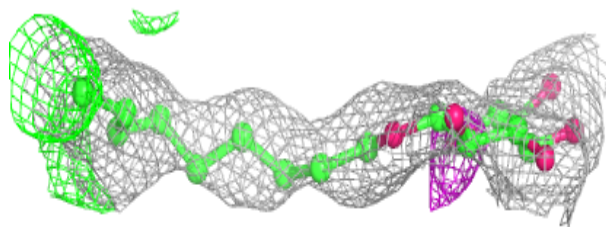
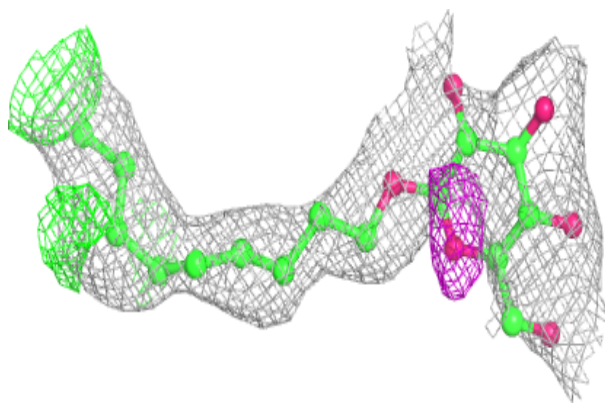
*Continued from previous page...*

Mol	Type	Chain	Res	Atoms	RSCC	RSR	B-factors(Å <sup>2</sup> )	Q<0.9
5	PEG	A	210	7/7	0.76	0.23	107,110,163,179	0
4	BNG	B	203	21/21	0.78	0.21	53,68,81,88	0
4	BNG	B	204	21/21	0.78	0.31	45,69,86,88	0
4	BNG	A	205	21/21	0.78	0.34	50,78,92,100	0
7	1PE	A	222	16/16	0.79	0.21	57,73,107,110	0
3	PG0	B	202	8/8	0.79	0.20	78,82,96,107	0
7	1PE	B	221	16/16	0.80	0.17	73,96,111,117	0
5	PEG	B	215	7/7	0.80	0.18	49,63,79,84	0
6	PG4	B	216	13/13	0.81	0.20	60,73,91,97	0
5	PEG	A	207	7/7	0.81	0.17	74,78,85,86	0
6	PG4	B	217	13/13	0.82	0.28	44,73,102,103	0
6	PG4	A	218	13/13	0.83	0.25	62,69,78,80	13
5	PEG	B	210	7/7	0.84	0.27	70,89,90,91	0
5	PEG	A	208	7/7	0.84	0.20	92,108,132,193	0
5	PEG	A	209	7/7	0.84	0.32	49,61,90,95	0
5	PEG	B	214	7/7	0.86	0.39	63,87,103,134	0
5	PEG	B	206	7/7	0.86	0.18	65,77,82,85	0
5	PEG	B	205	7/7	0.87	0.20	57,66,76,84	0
5	PEG	A	215	7/7	0.87	0.21	46,53,70,80	0
5	PEG	A	213	7/7	0.87	0.21	79,83,99,101	0
5	PEG	B	213	7/7	0.88	0.14	72,79,95,97	0
6	PG4	A	217	13/13	0.91	0.21	73,77,96,97	0
2	2VY	B	201	17/17	0.92	0.16	27,41,53,63	0
2	2VY	A	201	17/17	0.94	0.14	27,37,51,57	0

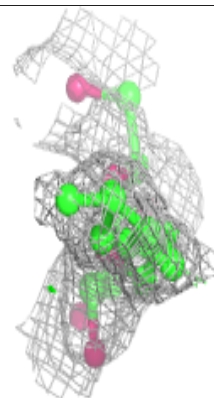
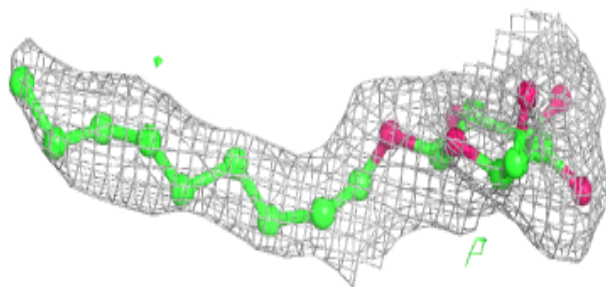
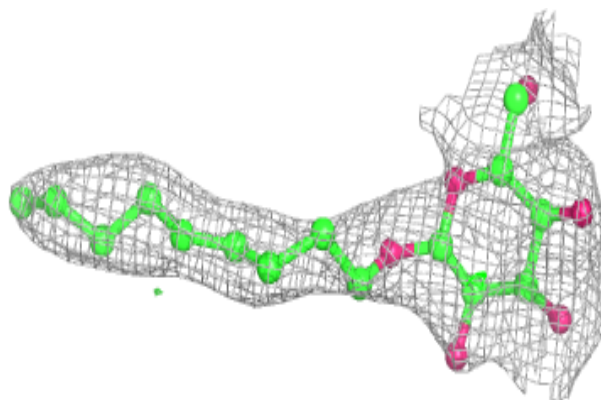
The following is a graphical depiction of the model fit to experimental electron density of all instances of the Ligand of Interest. In addition, ligands with molecular weight > 250 and outliers as shown on the geometry validation Tables will also be included. Each fit is shown from different orientation to approximate a three-dimensional view.

**Electron density around BNG A 206:**

$2mF_o-DF_c$  (at 0.7 rmsd) in gray  
 $mF_o-DF_c$  (at 3 rmsd) in purple (negative)  
and green (positive)

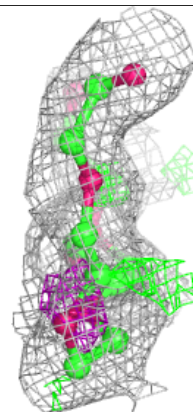
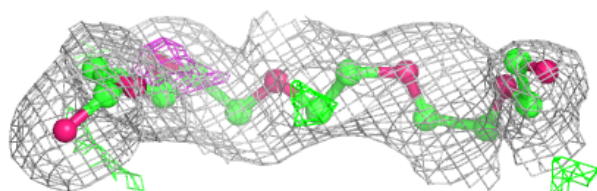
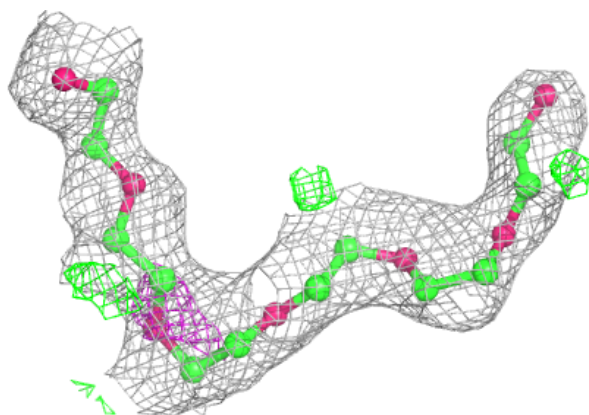
**Electron density around BNG A 204:**

$2mF_o-DF_c$  (at 0.7 rmsd) in gray  
 $mF_o-DF_c$  (at 3 rmsd) in purple (negative)  
and green (positive)

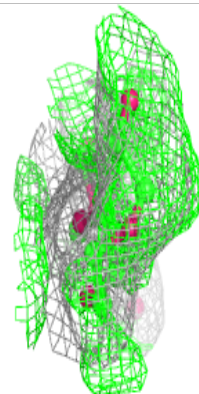
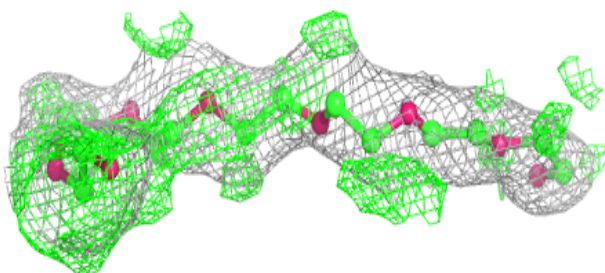
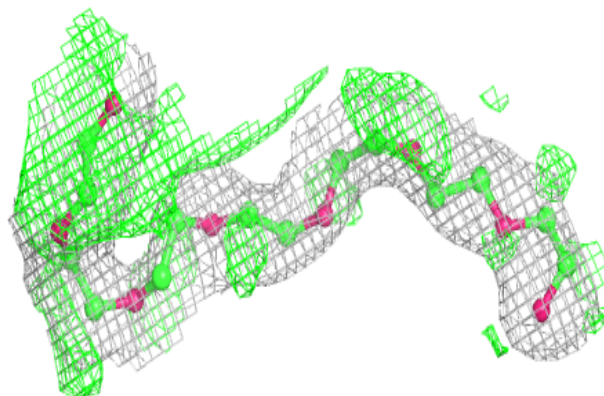


**Electron density around P6G A 224:**

$2mF_o-DF_c$  (at 0.7 rmsd) in gray  
 $mF_o-DF_c$  (at 3 rmsd) in purple (negative)  
and green (positive)

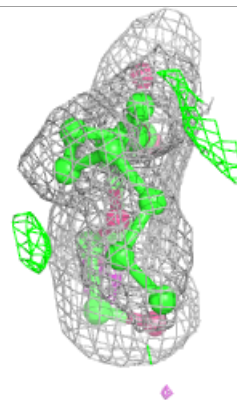
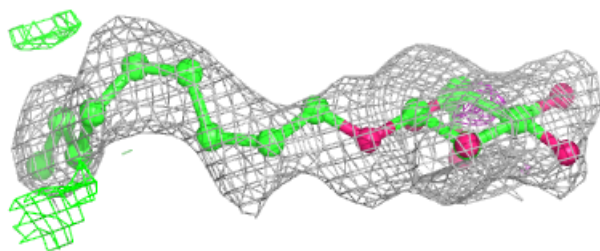
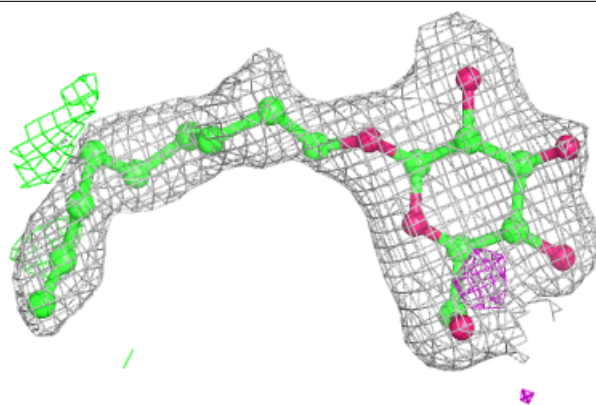
**Electron density around P33 B 222:**

$2mF_o-DF_c$  (at 0.7 rmsd) in gray  
 $mF_o-DF_c$  (at 3 rmsd) in purple (negative)  
and green (positive)

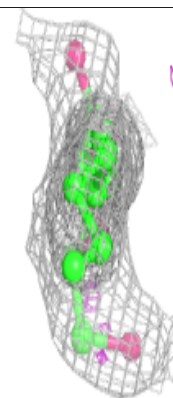
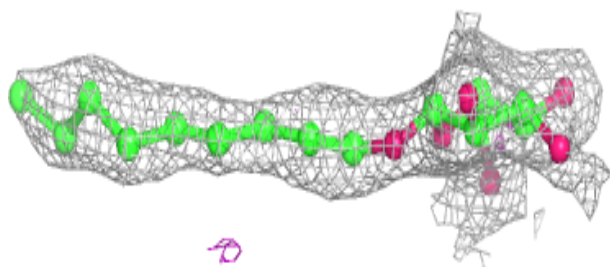
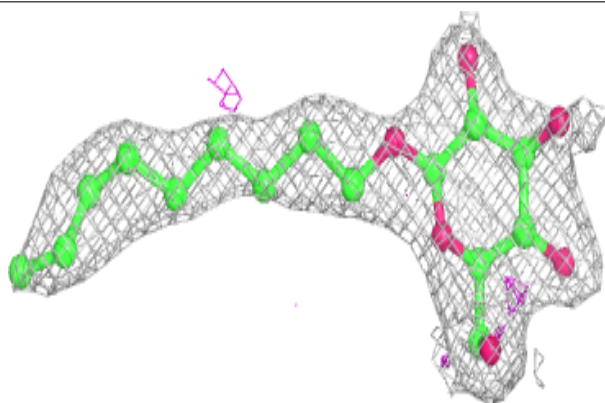


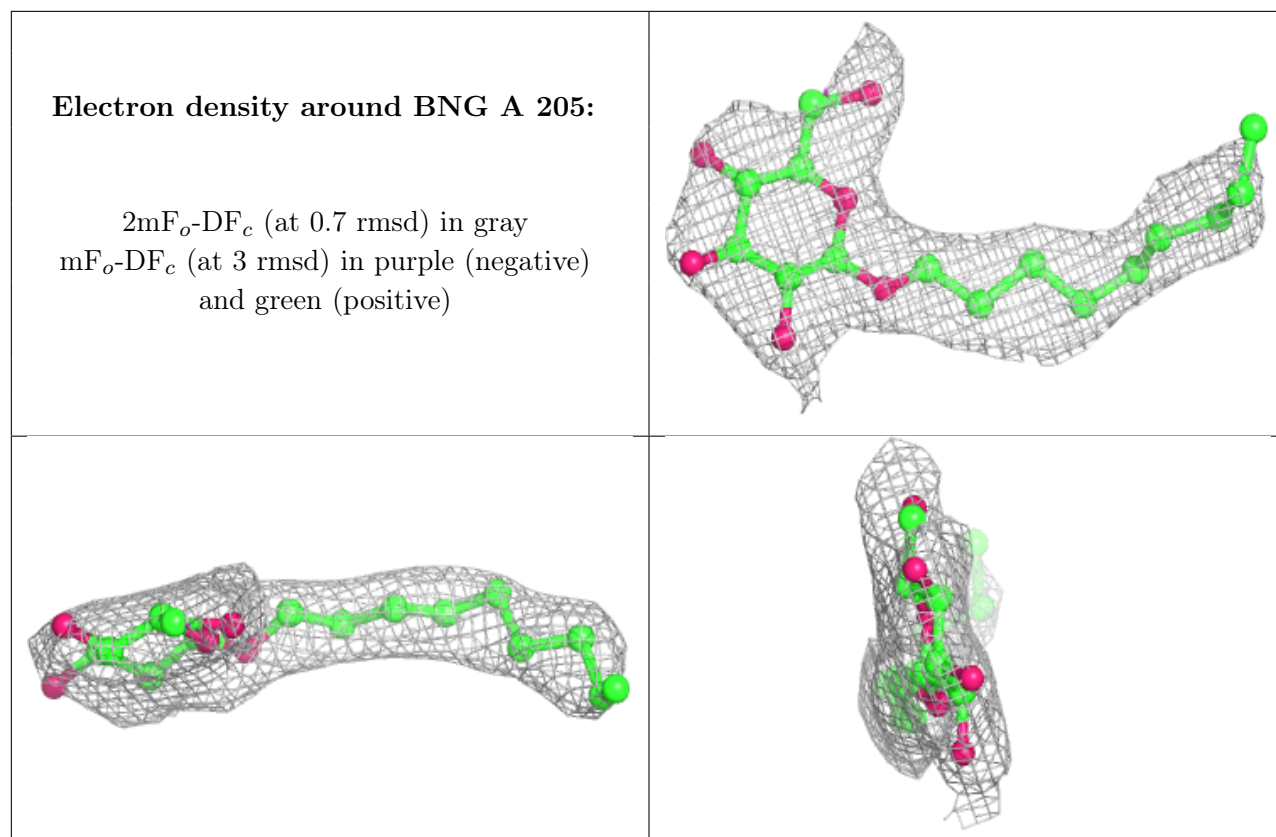
**Electron density around BNG B 203:**

$2mF_o-DF_c$  (at 0.7 rmsd) in gray  
 $mF_o-DF_c$  (at 3 rmsd) in purple (negative)  
and green (positive)

**Electron density around BNG B 204:**

$2mF_o-DF_c$  (at 0.7 rmsd) in gray  
 $mF_o-DF_c$  (at 3 rmsd) in purple (negative)  
and green (positive)





## 6.5 Other polymers [i](#)

There are no such residues in this entry.