



Full wwPDB X-ray Structure Validation Report ⓘ

Oct 3, 2023 – 07:50 AM EDT

PDB ID : 6POA
Title : Structure of human neuronal nitric oxide synthase R354A/G357D mutant heme domain in complex with 7-(3-(Aminomethyl)-4-(pyridin-3-ylmethoxy)phenyl)-4-methylquinolin-2-amine
Authors : Li, H.; Poulos, T.L.
Deposited on : 2019-07-03
Resolution : 1.81 Å(reported)

This is a Full wwPDB X-ray Structure Validation Report for a publicly released PDB entry.

We welcome your comments at validation@mail.wwpdb.org

A user guide is available at

<https://www.wwpdb.org/validation/2017/XrayValidationReportHelp>

with specific help available everywhere you see the ⓘ symbol.

The types of validation reports are described at

<http://www.wwpdb.org/validation/2017/FAQs#types>.

The following versions of software and data (see [references ⓘ](#)) were used in the production of this report:

MolProbity : **FAILED**
Mogul : 1.8.5 (274361), CSD as541be (2020)
Xtriage (Phenix) : 1.13
EDS : **FAILED**
buster-report : 1.1.7 (2018)
Percentile statistics : 20191225.v01 (using entries in the PDB archive December 25th 2019)
Ideal geometry (proteins) : Engh & Huber (2001)
Ideal geometry (DNA, RNA) : Parkinson et al. (1996)
Validation Pipeline (wwPDB-VP) : 2.35.1

1 Overall quality at a glance

The following experimental techniques were used to determine the structure:

X-RAY DIFFRACTION

The reported resolution of this entry is 1.81 Å.

There are no overall percentile quality scores available for this entry.

MolProbity and EDS failed to run properly - the sequence quality summary graphics cannot be shown.

2 Entry composition [i](#)

There are 6 unique types of molecules in this entry. The entry contains 7397 atoms, of which 0 are hydrogens and 0 are deuteriums.

In the tables below, the ZeroOcc column contains the number of atoms modelled with zero occupancy, the AltConf column contains the number of residues with at least one atom in alternate conformation and the Trace column contains the number of residues modelled with at most 2 atoms.

- Molecule 1 is a protein called Nitric oxide synthase, brain.

Mol	Chain	Residues	Atoms					ZeroOcc	AltConf	Trace
			Total	C	N	O	S			
1	A	413	Total 3374	C 2161	N 574	O 616	S 23	0	3	0
1	B	408	Total 3450	C 2207	N 590	O 631	S 22	0	16	0

There are 4 discrepancies between the modelled and reference sequences:

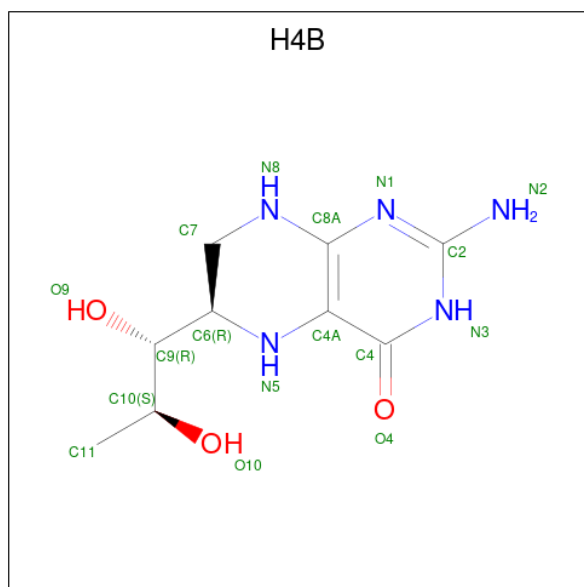
Chain	Residue	Modelled	Actual	Comment	Reference
A	354	ALA	ARG	engineered mutation	UNP P29475
A	357	ASP	GLY	engineered mutation	UNP P29475
B	354	ALA	ARG	engineered mutation	UNP P29475
B	357	ASP	GLY	engineered mutation	UNP P29475

- Molecule 2 is PROTOPORPHYRIN IX CONTAINING FE (three-letter code: HEM) (formula: $C_{34}H_{32}FeN_4O_4$).



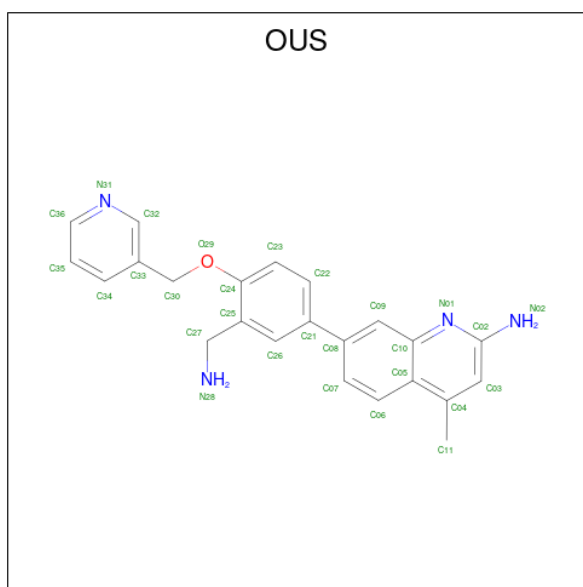
Mol	Chain	Residues	Atoms				ZeroOcc	AltConf	
			Total	C	Fe	N			O
2	A	1	43	34	1	4	4	0	0
2	B	1	43	34	1	4	4	0	0

- Molecule 3 is 5,6,7,8-TETRAHYDROBIOPTERIN (three-letter code: H4B) (formula: $C_9H_{15}N_5O_3$).



Mol	Chain	Residues	Atoms				ZeroOcc	AltConf
			Total	C	N	O		
3	A	1	17	9	5	3	0	0
3	B	1	17	9	5	3	0	1

- Molecule 4 is 7-{3-(aminomethyl)-4-[(pyridin-3-yl)methoxy]phenyl}-4-methylquinolin-2-amine (three-letter code: OUS) (formula: $C_{23}H_{22}N_4O$) (labeled as "Ligand of Interest" by depositor).



Mol	Chain	Residues	Atoms				ZeroOcc	AltConf
4	A	1	Total	C	N	O	0	0
			28	23	4	1		
4	A	1	Total	C	N	O	0	1
			28	23	4	1		
4	B	1	Total	C	N	O	0	0
			28	23	4	1		

- Molecule 5 is ZINC ION (three-letter code: ZN) (formula: Zn).

Mol	Chain	Residues	Atoms		ZeroOcc	AltConf
5	B	1	Total	Zn	0	0
			1	1		

- Molecule 6 is water.

Mol	Chain	Residues	Atoms		ZeroOcc	AltConf
6	A	218	Total	O	0	0
			218	218		
6	B	150	Total	O	0	0
			150	150		

MolProbity and EDS failed to run properly - this section is therefore empty.

3 Data and refinement statistics

EDS failed to run properly - this section is therefore incomplete.

Property	Value	Source
Space group	P 21 21 21	Depositor
Cell constants a, b, c, α , β , γ	52.28Å 122.29Å 164.95Å 90.00° 90.00° 90.00°	Depositor
Resolution (Å)	39.57 – 1.81	Depositor
% Data completeness (in resolution range)	93.0 (39.57-1.81)	Depositor
R_{merge}	0.08	Depositor
R_{sym}	0.08	Depositor
$\langle I/\sigma(I) \rangle$ ¹	1.21 (at 1.81Å)	Xtrriage
Refinement program	PHENIX (1.11.1-2575_1496: ???)	Depositor
R, R_{free}	0.198 , 0.236	Depositor
Wilson B-factor (Å ²)	37.8	Xtrriage
Anisotropy	0.460	Xtrriage
L-test for twinning ²	$\langle L \rangle = 0.49$, $\langle L^2 \rangle = 0.32$	Xtrriage
Estimated twinning fraction	No twinning to report.	Xtrriage
Total number of atoms	7397	wwPDB-VP
Average B, all atoms (Å ²)	58.0	wwPDB-VP

Xtrriage's analysis on translational NCS is as follows: *The largest off-origin peak in the Patterson function is 3.93% of the height of the origin peak. No significant pseudotranslation is detected.*

¹Intensities estimated from amplitudes.

²Theoretical values of $\langle |L| \rangle$, $\langle L^2 \rangle$ for acentric reflections are 0.5, 0.333 respectively for untwinned datasets, and 0.375, 0.2 for perfectly twinned datasets.

4 Model quality [i](#)

4.1 Standard geometry [i](#)

MolProbity failed to run properly - this section is therefore empty.

4.2 Too-close contacts [i](#)

MolProbity failed to run properly - this section is therefore empty.

4.3 Torsion angles [i](#)

4.3.1 Protein backbone [i](#)

MolProbity failed to run properly - this section is therefore empty.

4.3.2 Protein sidechains [i](#)

MolProbity failed to run properly - this section is therefore empty.

4.3.3 RNA [i](#)

MolProbity failed to run properly - this section is therefore empty.

4.4 Non-standard residues in protein, DNA, RNA chains [i](#)

There are no non-standard protein/DNA/RNA residues in this entry.

4.5 Carbohydrates [i](#)

There are no monosaccharides in this entry.

4.6 Ligand geometry [i](#)

Of 8 ligands modelled in this entry, 1 is monoatomic - leaving 7 for Mogul analysis.

In the following table, the Counts columns list the number of bonds (or angles) for which Mogul statistics could be retrieved, the number of bonds (or angles) that are observed in the model and the number of bonds (or angles) that are defined in the Chemical Component Dictionary. The Link column lists molecule types, if any, to which the group is linked. The Z score for a bond

length (or angle) is the number of standard deviations the observed value is removed from the expected value. A bond length (or angle) with $|Z| > 2$ is considered an outlier worth inspection. RMSZ is the root-mean-square of all Z scores of the bond lengths (or angles).

Mol	Type	Chain	Res	Link	Bond lengths			Bond angles		
					Counts	RMSZ	# Z > 2	Counts	RMSZ	# Z > 2
4	OUS	B	804	-	31,31,31	0.87	1 (3%)	42,43,43	1.97	8 (19%)
3	H4B	B	803[A]	-	16,18,18	0.82	0	11,26,26	2.70	6 (54%)
4	OUS	A	803	-	31,31,31	0.80	0	42,43,43	1.89	6 (14%)
2	HEM	B	802	1	41,50,50	1.50	7 (17%)	45,82,82	1.83	10 (22%)
2	HEM	A	801	1	41,50,50	1.44	4 (9%)	45,82,82	1.83	13 (28%)
3	H4B	A	802	-	16,18,18	0.94	1 (6%)	11,26,26	2.73	5 (45%)
4	OUS	A	804[B]	-	31,31,31	0.77	1 (3%)	42,43,43	1.38	5 (11%)

In the following table, the Chirals column lists the number of chiral outliers, the number of chiral centers analysed, the number of these observed in the model and the number defined in the Chemical Component Dictionary. Similar counts are reported in the Torsion and Rings columns. '-' means no outliers of that kind were identified.

Mol	Type	Chain	Res	Link	Chirals	Torsions	Rings
4	OUS	B	804	-	-	2/11/11/11	0/4/4/4
3	H4B	B	803[A]	-	-	0/8/17/17	0/2/2/2
4	OUS	A	803	-	-	3/11/11/11	0/4/4/4
2	HEM	B	802	1	-	2/12/54/54	-
2	HEM	A	801	1	-	0/12/54/54	-
3	H4B	A	802	-	-	3/8/17/17	0/2/2/2
4	OUS	A	804[B]	-	-	5/11/11/11	0/4/4/4

All (14) bond length outliers are listed below:

Mol	Chain	Res	Type	Atoms	Z	Observed(Å)	Ideal(Å)
2	A	801	HEM	C3C-C2C	-4.39	1.34	1.40
2	B	802	HEM	C3C-C2C	-4.35	1.34	1.40
2	B	802	HEM	C3C-CAC	3.27	1.54	1.47
2	A	801	HEM	CAB-C3B	3.17	1.56	1.47
2	A	801	HEM	C3C-CAC	2.97	1.53	1.47
2	B	802	HEM	CAB-C3B	2.87	1.55	1.47
3	A	802	H4B	C4A-C4	-2.42	1.38	1.41
2	B	802	HEM	CMB-C2B	2.38	1.55	1.50
4	B	804	OUS	C02-N01	2.25	1.36	1.33
4	A	804[B]	OUS	C02-N01	2.13	1.36	1.33
2	B	802	HEM	CMD-C2D	2.11	1.55	1.50

Continued on next page...

Continued from previous page...

Mol	Chain	Res	Type	Atoms	Z	Observed(Å)	Ideal(Å)
2	B	802	HEM	C2C-C1C	2.09	1.47	1.42
2	A	801	HEM	CMD-C2D	2.04	1.55	1.50
2	B	802	HEM	C3B-C2B	-2.03	1.33	1.37

All (53) bond angle outliers are listed below:

Mol	Chain	Res	Type	Atoms	Z	Observed(°)	Ideal(°)
4	A	803	OUS	O29-C24-C25	6.49	124.27	115.78
4	A	803	OUS	C30-O29-C24	6.26	130.08	117.76
4	B	804	OUS	O29-C24-C25	5.95	123.56	115.78
4	B	804	OUS	C30-O29-C24	5.80	129.18	117.76
2	A	801	HEM	CBA-CAA-C2A	-5.69	102.92	112.62
2	B	802	HEM	C4B-CHC-C1C	5.54	129.88	122.56
3	B	803[A]	H4B	C8A-C4A-C4	5.15	119.14	114.57
3	A	802	H4B	C8A-C4A-C4	5.05	119.05	114.57
3	A	802	H4B	C2-N3-C4	4.33	122.80	115.93
2	B	802	HEM	CBA-CAA-C2A	-4.05	105.70	112.62
4	B	804	OUS	C04-C05-C10	3.97	120.16	118.01
4	B	804	OUS	C05-C10-N01	-3.91	118.67	122.81
3	B	803[A]	H4B	C4-C4A-N5	3.84	122.35	119.12
3	A	802	H4B	N1-C2-N3	-3.80	119.45	125.42
2	B	802	HEM	CMA-C3A-C4A	-3.80	122.62	128.46
2	A	801	HEM	C4B-CHC-C1C	3.73	127.48	122.56
2	B	802	HEM	CHD-C1D-ND	3.56	128.30	124.43
4	A	803	OUS	C05-C10-N01	-3.47	119.13	122.81
4	A	804[B]	OUS	O29-C24-C25	3.45	120.29	115.78
2	A	801	HEM	CHC-C4B-NB	3.44	128.17	124.43
2	A	801	HEM	CMA-C3A-C4A	-3.30	123.40	128.46
4	A	803	OUS	C04-C05-C10	3.27	119.78	118.01
3	B	803[A]	H4B	C2-N3-C4	3.22	121.05	115.93
4	A	803	OUS	O29-C24-C23	-3.21	117.02	123.97
3	B	803[A]	H4B	N1-C2-N3	-3.19	120.41	125.42
4	A	804[B]	OUS	C04-C05-C10	3.19	119.73	118.01
2	A	801	HEM	CHA-C4D-ND	2.77	127.80	124.38
4	A	803	OUS	C36-N31-C32	2.68	121.48	116.85
2	B	802	HEM	CMA-C3A-C2A	2.66	129.96	124.94
3	B	803[A]	H4B	C2-N1-C8A	2.66	120.50	114.54
2	A	801	HEM	C3B-C2B-C1B	2.65	108.45	106.49
2	B	802	HEM	C3D-C4D-ND	-2.65	107.22	110.17
4	B	804	OUS	C36-N31-C32	2.61	121.36	116.85
4	A	804[B]	OUS	C05-C10-N01	-2.60	120.06	122.81
2	A	801	HEM	CMC-C2C-C3C	2.59	129.53	124.68

Continued on next page...

Continued from previous page...

Mol	Chain	Res	Type	Atoms	Z	Observed(°)	Ideal(°)
2	B	802	HEM	C4D-ND-C1D	2.55	107.71	105.07
3	A	802	H4B	N2-C2-N1	2.51	121.16	117.25
2	A	801	HEM	O1A-CGA-CBA	-2.50	115.04	123.08
4	A	804[B]	OUS	C36-N31-C32	2.49	121.16	116.85
4	B	804	OUS	O29-C24-C23	-2.43	118.70	123.97
2	A	801	HEM	CMA-C3A-C2A	2.41	129.49	124.94
2	B	802	HEM	CHC-C4B-NB	2.37	127.01	124.43
3	A	802	H4B	C2-N1-C8A	2.36	119.82	114.54
2	B	802	HEM	C4B-C3B-C2B	2.31	108.95	107.11
2	B	802	HEM	CAD-CBD-CGD	-2.31	108.64	113.60
4	B	804	OUS	C03-C04-C05	2.29	120.03	117.78
2	A	801	HEM	C4D-ND-C1D	2.21	107.35	105.07
2	A	801	HEM	CAD-CBD-CGD	-2.19	108.89	113.60
3	B	803[A]	H4B	N2-C2-N3	2.16	120.62	117.25
4	A	804[B]	OUS	C22-C21-C08	-2.14	117.64	121.36
2	A	801	HEM	C3D-C4D-ND	-2.13	107.80	110.17
4	B	804	OUS	N02-C02-N01	2.05	119.95	118.26
2	A	801	HEM	O2A-CGA-CBA	2.02	120.52	114.03

There are no chirality outliers.

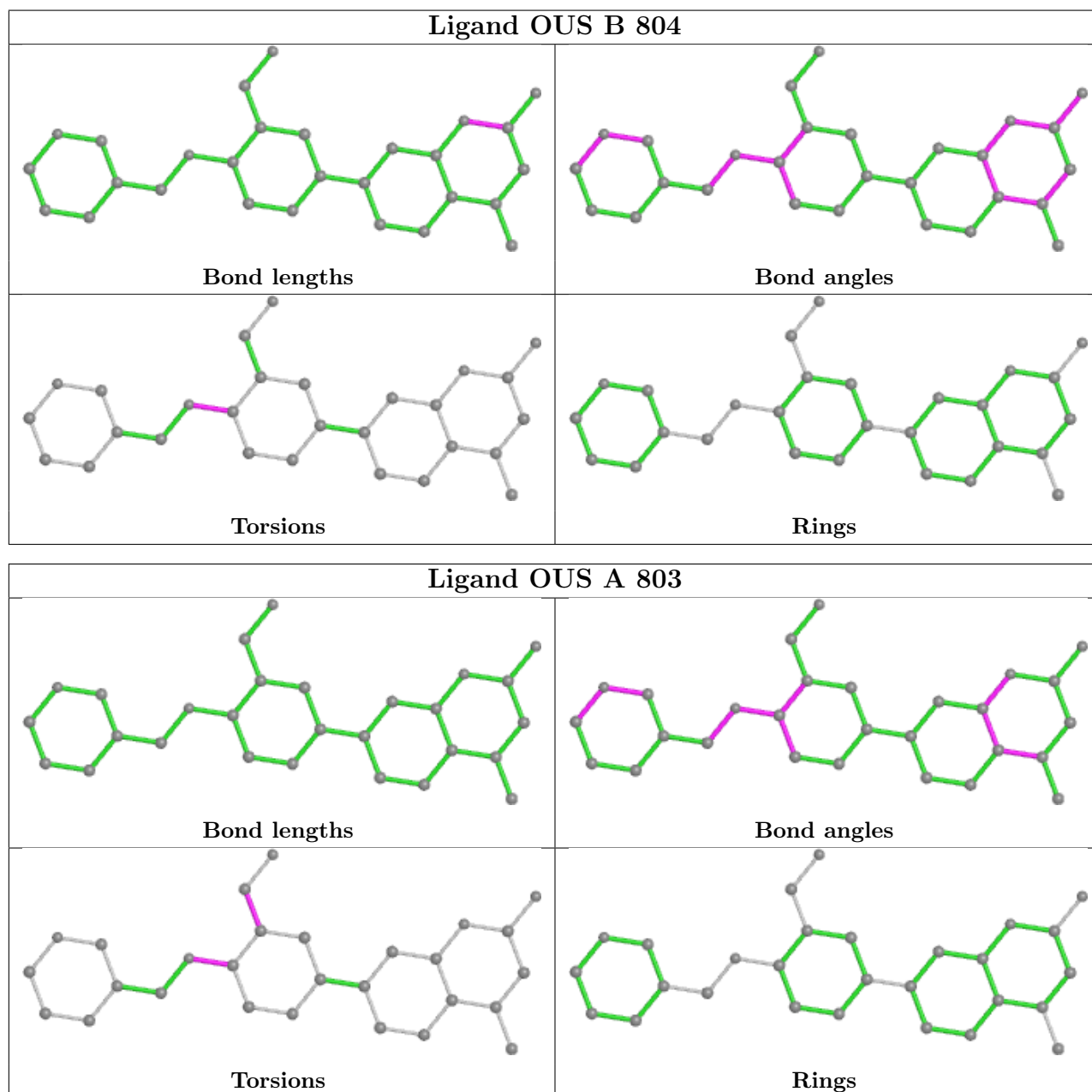
All (15) torsion outliers are listed below:

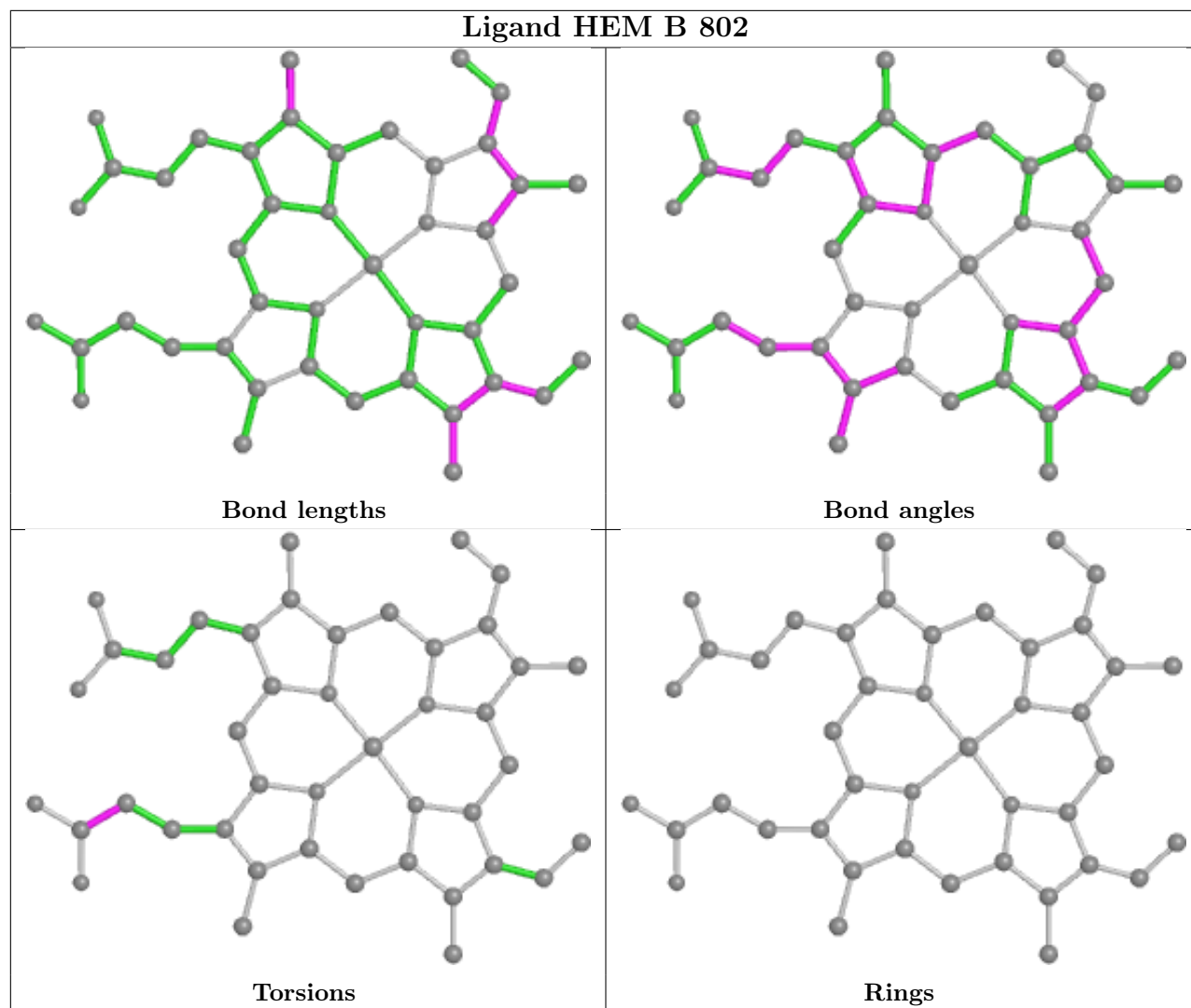
Mol	Chain	Res	Type	Atoms
4	A	803	OUS	C25-C24-O29-C30
4	B	804	OUS	C25-C24-O29-C30
3	A	802	H4B	C7-C6-C9-O9
3	A	802	H4B	C7-C6-C9-C10
4	A	803	OUS	C23-C24-O29-C30
4	B	804	OUS	C23-C24-O29-C30
4	A	804[B]	OUS	C24-C25-C27-N28
4	A	804[B]	OUS	C33-C30-O29-C24
4	A	804[B]	OUS	C09-C08-C21-C22
4	A	804[B]	OUS	C09-C08-C21-C26
4	A	804[B]	OUS	C07-C08-C21-C22
2	B	802	HEM	CAA-CBA-CGA-O2A
2	B	802	HEM	CAA-CBA-CGA-O1A
4	A	803	OUS	C24-C25-C27-N28
3	A	802	H4B	N5-C6-C9-O9

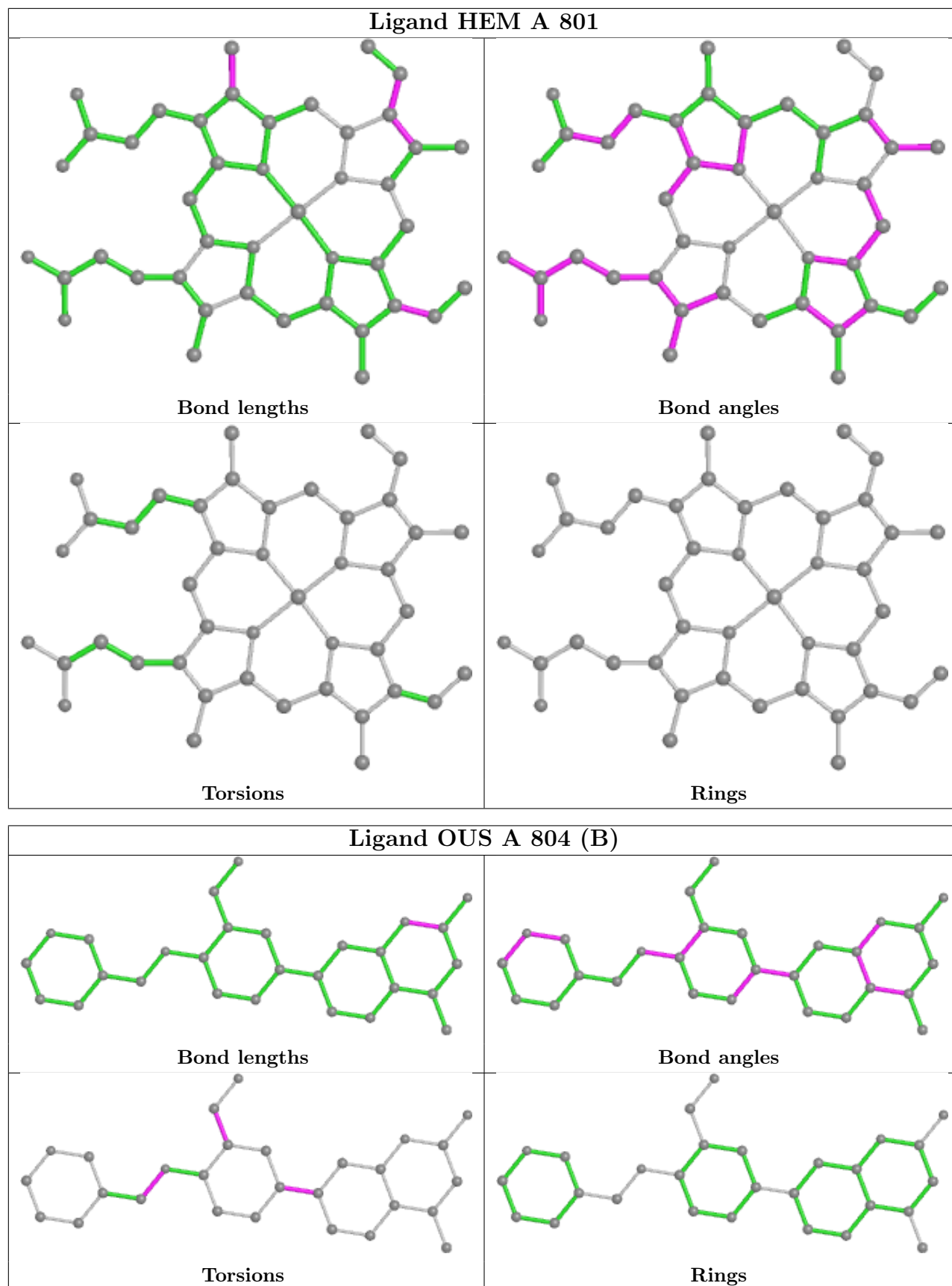
There are no ring outliers.

No monomer is involved in short contacts.

The following is a two-dimensional graphical depiction of Mogul quality analysis of bond lengths, bond angles, torsion angles, and ring geometry for all instances of the Ligand of Interest. In addition, ligands with molecular weight > 250 and outliers as shown on the validation Tables will also be included. For torsion angles, if less than 5% of the Mogul distribution of torsion angles is within 10 degrees of the torsion angle in question, then that torsion angle is considered an outlier. Any bond that is central to one or more torsion angles identified as an outlier by Mogul will be highlighted in the graph. For rings, the root-mean-square deviation (RMSD) between the ring in question and similar rings identified by Mogul is calculated over all ring torsion angles. If the average RMSD is greater than 60 degrees and the minimal RMSD between the ring in question and any Mogul-identified rings is also greater than 60 degrees, then that ring is considered an outlier. The outliers are highlighted in purple. The color gray indicates Mogul did not find sufficient equivalents in the CSD to analyse the geometry.







4.7 Other polymers [i](#)

There are no such residues in this entry.

4.8 Polymer linkage issues [i](#)

There are no chain breaks in this entry.

5 Fit of model and data [i](#)

5.1 Protein, DNA and RNA chains [i](#)

EDS failed to run properly - this section is therefore empty.

5.2 Non-standard residues in protein, DNA, RNA chains [i](#)

EDS failed to run properly - this section is therefore empty.

5.3 Carbohydrates [i](#)

EDS failed to run properly - this section is therefore empty.

5.4 Ligands [i](#)

EDS failed to run properly - this section is therefore empty.

5.5 Other polymers [i](#)

EDS failed to run properly - this section is therefore empty.