



# Full wwPDB X-ray Structure Validation Report ⓘ

Oct 4, 2023 – 07:54 PM EDT

PDB ID : 6PP4  
Title : Structure of human endothelial nitric oxide synthase heme domain in complex with 7-(3-(Aminomethyl)-4-(pyridin-3-ylmethoxy)phenyl)-4-methylquinolin-2-amine  
Authors : Chreifi, G.; Li, H.; Poulos, T.L.  
Deposited on : 2019-07-05  
Resolution : 2.20 Å(reported)

This is a Full wwPDB X-ray Structure Validation Report for a publicly released PDB entry.

We welcome your comments at [validation@mail.wwpdb.org](mailto:validation@mail.wwpdb.org)

A user guide is available at

<https://www.wwpdb.org/validation/2017/XrayValidationReportHelp>

with specific help available everywhere you see the ⓘ symbol.

The types of validation reports are described at

<http://www.wwpdb.org/validation/2017/FAQs#types>.

---

The following versions of software and data (see [references ⓘ](#)) were used in the production of this report:

MolProbity : **FAILED**  
Mogul : 1.8.5 (274361), CSD as541be (2020)  
Xtriage (Phenix) : 1.13  
EDS : **FAILED**  
buster-report : 1.1.7 (2018)  
Percentile statistics : 20191225.v01 (using entries in the PDB archive December 25th 2019)  
Ideal geometry (proteins) : Engh & Huber (2001)  
Ideal geometry (DNA, RNA) : Parkinson et al. (1996)  
Validation Pipeline (wwPDB-VP) : 2.35.1

## 1 Overall quality at a glance

The following experimental techniques were used to determine the structure:

*X-RAY DIFFRACTION*

The reported resolution of this entry is 2.20 Å.

There are no overall percentile quality scores available for this entry.

MolProbity and EDS failed to run properly - the sequence quality summary graphics cannot be shown.

## 2 Entry composition

There are 10 unique types of molecules in this entry. The entry contains 13926 atoms, of which 0 are hydrogens and 0 are deuteriums.

In the tables below, the ZeroOcc column contains the number of atoms modelled with zero occupancy, the AltConf column contains the number of residues with at least one atom in alternate conformation and the Trace column contains the number of residues modelled with at most 2 atoms.

- Molecule 1 is a protein called Nitric oxide synthase, endothelial.

Mol	Chain	Residues	Atoms					ZeroOcc	AltConf	Trace
			Total	C	N	O	S			
1	A	404	3237	2062	570	589	16	0	2	0
1	B	402	3221	2051	566	587	17	0	3	0
1	C	401	3209	2044	563	586	16	0	2	0
1	D	403	3226	2054	569	587	16	0	2	0

There are 4 discrepancies between the modelled and reference sequences:

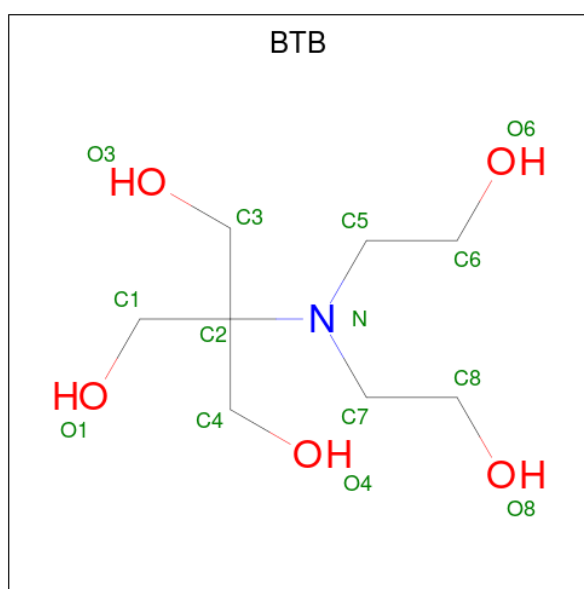
Chain	Residue	Modelled	Actual	Comment	Reference
A	298	GLU	ASP	variant	UNP P29474
B	298	GLU	ASP	variant	UNP P29474
C	298	GLU	ASP	variant	UNP P29474
D	298	GLU	ASP	variant	UNP P29474

- Molecule 2 is PROTOPORPHYRIN IX CONTAINING FE (three-letter code: HEM) (formula:  $C_{34}H_{32}FeN_4O_4$ ).



Mol	Chain	Residues	Atoms				ZeroOcc	AltConf
3	A	1	Total	C	N	O	0	0
			17	9	5	3		
3	B	1	Total	C	N	O	0	0
			17	9	5	3		
3	C	1	Total	C	N	O	0	0
			17	9	5	3		
3	D	1	Total	C	N	O	0	0
			17	9	5	3		

- Molecule 4 is 2-[BIS-(2-HYDROXY-ETHYL)-AMINO]-2-HYDROXYMETHYL-PROPAN E-1,3-DIOL (three-letter code: BTB) (formula: C<sub>8</sub>H<sub>19</sub>NO<sub>5</sub>).



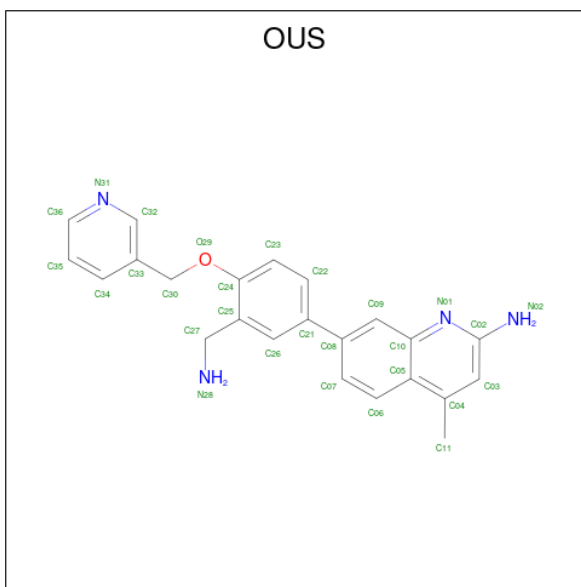
Mol	Chain	Residues	Atoms				ZeroOcc	AltConf
4	A	1	Total	C	N	O	0	0
			14	8	1	5		
4	A	1	Total	C	N	O	0	0
			14	8	1	5		
4	B	1	Total	C	N	O	0	0
			14	8	1	5		
4	B	1	Total	C	N	O	0	0
			14	8	1	5		
4	B	1	Total	C	N	O	0	0
			14	8	1	5		
4	C	1	Total	C	N	O	0	0
			14	8	1	5		
4	D	1	Total	C	N	O	0	0
			14	8	1	5		

*Continued on next page...*

Continued from previous page...

Mol	Chain	Residues	Atoms				ZeroOcc	AltConf
4	D	1	Total	C	N	O	0	0
			14	8	1	5		

- Molecule 5 is 7-{3-(aminomethyl)-4-[(pyridin-3-yl)methoxy]phenyl}-4-methylquinolin-2-amine (three-letter code: OUS) (formula: C<sub>23</sub>H<sub>22</sub>N<sub>4</sub>O) (labeled as "Ligand of Interest" by depositor).



Mol	Chain	Residues	Atoms				ZeroOcc	AltConf
5	A	1	Total	C	N	O	0	0
			28	23	4	1		
5	B	1	Total	C	N	O	0	0
			28	23	4	1		
5	C	1	Total	C	N	O	0	0
			28	23	4	1		
5	D	1	Total	C	N	O	0	0
			28	23	4	1		

- Molecule 6 is ZINC ION (three-letter code: ZN) (formula: Zn).

Mol	Chain	Residues	Atoms		ZeroOcc	AltConf
6	A	1	Total	Zn	0	0
			1	1		
6	C	1	Total	Zn	0	0
			1	1		

- Molecule 7 is GLYCEROL (three-letter code: GOL) (formula: C<sub>3</sub>H<sub>8</sub>O<sub>3</sub>).



Mol	Chain	Residues	Atoms	ZeroOcc	AltConf
7	A	1	Total C O 6 3 3	0	0
7	C	1	Total C O 6 3 3	0	0

- Molecule 8 is CHLORIDE ION (three-letter code: CL) (formula: Cl).

Mol	Chain	Residues	Atoms	ZeroOcc	AltConf
8	A	1	Total Cl 1 1	0	0
8	B	1	Total Cl 1 1	0	0
8	C	1	Total Cl 1 1	0	0
8	D	1	Total Cl 1 1	0	0

- Molecule 9 is GADOLINIUM ATOM (three-letter code: GD) (formula: Gd).

Mol	Chain	Residues	Atoms	ZeroOcc	AltConf
9	B	1	Total Gd 1 1	0	0
9	C	1	Total Gd 1 1	0	0
9	D	1	Total Gd 1 1	0	0

- Molecule 10 is water.

Mol	Chain	Residues	Atoms	ZeroOcc	AltConf
10	A	91	Total O 91 91	0	0
10	B	156	Total O 156 156	0	0
10	C	141	Total O 141 141	0	0
10	D	160	Total O 160 160	0	0

MolProbity and EDS failed to run properly - this section is therefore empty.



### 3 Data and refinement statistics i

EDS failed to run properly - this section is therefore incomplete.

Property	Value	Source
Space group	P 1 21 1	Depositor
Cell constants a, b, c, $\alpha$ , $\beta$ , $\gamma$	59.17Å 152.48Å 109.14Å 90.00° 90.86° 90.00°	Depositor
Resolution (Å)	43.15 – 2.20	Depositor
% Data completeness (in resolution range)	95.5 (43.15-2.20)	Depositor
$R_{merge}$	0.19	Depositor
$R_{sym}$	0.19	Depositor
$\langle I/\sigma(I) \rangle$ <sup>1</sup>	1.78 (at 2.20Å)	Xtrriage
Refinement program	PHENIX (1.11.1-2575_1496: ???)	Depositor
R, $R_{free}$	0.187 , 0.238	Depositor
Wilson B-factor (Å <sup>2</sup> )	33.4	Xtrriage
Anisotropy	0.793	Xtrriage
L-test for twinning <sup>2</sup>	$\langle  L  \rangle = 0.49$ , $\langle L^2 \rangle = 0.32$	Xtrriage
Estimated twinning fraction	0.097 for h,-k,-l	Xtrriage
Total number of atoms	13926	wwPDB-VP
Average B, all atoms (Å <sup>2</sup> )	52.0	wwPDB-VP

Xtrriage's analysis on translational NCS is as follows: *The largest off-origin peak in the Patterson function is 3.84% of the height of the origin peak. No significant pseudotranslation is detected.*

<sup>1</sup> Intensities estimated from amplitudes.

<sup>2</sup> Theoretical values of  $\langle |L| \rangle$ ,  $\langle L^2 \rangle$  for acentric reflections are 0.5, 0.333 respectively for untwinned datasets, and 0.375, 0.2 for perfectly twinned datasets.

## 4 Model quality [i](#)

### 4.1 Standard geometry [i](#)

MolProbity failed to run properly - this section is therefore empty.

### 4.2 Too-close contacts [i](#)

MolProbity failed to run properly - this section is therefore empty.

### 4.3 Torsion angles [i](#)

#### 4.3.1 Protein backbone [i](#)

MolProbity failed to run properly - this section is therefore empty.

#### 4.3.2 Protein sidechains [i](#)

MolProbity failed to run properly - this section is therefore empty.

#### 4.3.3 RNA [i](#)

MolProbity failed to run properly - this section is therefore empty.

### 4.4 Non-standard residues in protein, DNA, RNA chains [i](#)

There are no non-standard protein/DNA/RNA residues in this entry.

### 4.5 Carbohydrates [i](#)

There are no monosaccharides in this entry.

### 4.6 Ligand geometry [i](#)

Of 31 ligands modelled in this entry, 9 are monoatomic - leaving 22 for Mogul analysis.

In the following table, the Counts columns list the number of bonds (or angles) for which Mogul statistics could be retrieved, the number of bonds (or angles) that are observed in the model and the number of bonds (or angles) that are defined in the Chemical Component Dictionary. The Link column lists molecule types, if any, to which the group is linked. The Z score for a bond

length (or angle) is the number of standard deviations the observed value is removed from the expected value. A bond length (or angle) with  $|Z| > 2$  is considered an outlier worth inspection. RMSZ is the root-mean-square of all Z scores of the bond lengths (or angles).

Mol	Type	Chain	Res	Link	Bond lengths			Bond angles		
					Counts	RMSZ	# Z  > 2	Counts	RMSZ	# Z  > 2
5	OUS	C	504	-	31,31,31	0.84	0	42,43,43	1.29	4 (9%)
3	H4B	B	502	-	16,18,18	0.87	0	11,26,26	2.80	7 (63%)
4	BTB	D	505	-	13,13,13	0.44	0	7,16,16	0.88	0
3	H4B	D	502	-	16,18,18	0.74	0	11,26,26	2.73	6 (54%)
7	GOL	C	507	-	5,5,5	0.49	0	5,5,5	0.39	0
4	BTB	B	508	-	13,13,13	1.00	2 (15%)	7,16,16	1.49	1 (14%)
2	HEM	D	501	1	41,50,50	1.49	5 (12%)	45,82,82	2.06	15 (33%)
4	BTB	A	505	-	13,13,13	0.54	0	7,16,16	0.83	0
5	OUS	D	503	-	31,31,31	0.91	0	42,43,43	1.19	4 (9%)
5	OUS	A	504	-	31,31,31	0.87	2 (6%)	42,43,43	1.62	8 (19%)
7	GOL	A	507	-	5,5,5	0.33	0	5,5,5	0.31	0
4	BTB	D	504	9	13,13,13	0.48	0	7,16,16	0.50	0
2	HEM	A	501	1	41,50,50	1.51	6 (14%)	45,82,82	1.56	11 (24%)
5	OUS	B	503	-	31,31,31	0.84	0	42,43,43	1.50	7 (16%)
4	BTB	B	505	-	13,13,13	0.44	0	7,16,16	0.63	0
4	BTB	A	503	9	13,13,13	0.62	0	7,16,16	0.97	0
3	H4B	C	503	-	16,18,18	0.95	0	11,26,26	2.74	6 (54%)
2	HEM	C	502	1	41,50,50	1.57	8 (19%)	45,82,82	1.62	9 (20%)
2	HEM	B	501	1	41,50,50	1.56	6 (14%)	45,82,82	1.77	14 (31%)
4	BTB	C	505	-	13,13,13	0.33	0	7,16,16	0.36	0
3	H4B	A	502	-	16,18,18	0.95	0	11,26,26	2.75	6 (54%)
4	BTB	B	504	9	13,13,13	0.48	0	7,16,16	0.25	0

In the following table, the Chirals column lists the number of chiral outliers, the number of chiral centers analysed, the number of these observed in the model and the number defined in the Chemical Component Dictionary. Similar counts are reported in the Torsion and Rings columns. '-' means no outliers of that kind were identified.

Mol	Type	Chain	Res	Link	Chirals	Torsions	Rings
5	OUS	C	504	-	-	2/11/11/11	0/4/4/4
3	H4B	B	502	-	-	4/8/17/17	0/2/2/2
4	BTB	D	505	-	-	14/21/21/21	-
3	H4B	D	502	-	-	4/8/17/17	0/2/2/2
7	GOL	C	507	-	-	4/4/4/4	-
4	BTB	B	508	-	-	7/21/21/21	-

Continued on next page...

Continued from previous page...

Mol	Type	Chain	Res	Link	Chirals	Torsions	Rings
2	HEM	D	501	1	-	1/12/54/54	-
4	BTB	A	505	-	-	7/21/21/21	-
5	OUS	D	503	-	-	0/11/11/11	0/4/4/4
5	OUS	A	504	-	-	2/11/11/11	0/4/4/4
7	GOL	A	507	-	-	1/4/4/4	-
4	BTB	D	504	9	-	3/21/21/21	-
2	HEM	A	501	1	-	4/12/54/54	-
5	OUS	B	503	-	-	2/11/11/11	0/4/4/4
4	BTB	B	505	-	-	7/21/21/21	-
4	BTB	A	503	9	-	6/21/21/21	-
3	H4B	C	503	-	-	3/8/17/17	0/2/2/2
2	HEM	C	502	1	-	5/12/54/54	-
2	HEM	B	501	1	-	2/12/54/54	-
4	BTB	C	505	-	-	3/21/21/21	-
3	H4B	A	502	-	-	4/8/17/17	0/2/2/2
4	BTB	B	504	9	-	6/21/21/21	-

All (29) bond length outliers are listed below:

Mol	Chain	Res	Type	Atoms	Z	Observed(Å)	Ideal(Å)
2	D	501	HEM	C3C-C2C	-4.16	1.34	1.40
2	D	501	HEM	C3C-CAC	3.94	1.55	1.47
2	C	502	HEM	C3C-CAC	3.78	1.55	1.47
2	A	501	HEM	C3C-CAC	3.72	1.55	1.47
2	A	501	HEM	C3C-C2C	-3.60	1.35	1.40
2	B	501	HEM	C3C-C2C	-3.51	1.35	1.40
2	B	501	HEM	C3C-CAC	3.48	1.54	1.47
2	C	502	HEM	CAB-C3B	3.48	1.56	1.47
2	B	501	HEM	FE-NB	3.40	2.13	1.96
2	D	501	HEM	FE-NB	3.21	2.12	1.96
2	C	502	HEM	C3C-C2C	-3.16	1.36	1.40
2	B	501	HEM	CAB-C3B	3.04	1.55	1.47
2	A	501	HEM	CAB-C3B	2.88	1.55	1.47
2	C	502	HEM	FE-NB	2.77	2.10	1.96
2	A	501	HEM	FE-ND	2.77	2.10	1.96
2	D	501	HEM	CAB-C3B	2.73	1.54	1.47
2	C	502	HEM	CMD-C2D	2.56	1.56	1.50
2	C	502	HEM	CMB-C2B	2.52	1.56	1.50
5	A	504	OUS	C05-C10	-2.28	1.38	1.42

Continued on next page...

*Continued from previous page...*

Mol	Chain	Res	Type	Atoms	Z	Observed(Å)	Ideal(Å)
2	B	501	HEM	CMB-C2B	2.27	1.55	1.50
4	B	508	BTB	C4-C2	-2.26	1.50	1.53
2	A	501	HEM	CMD-C2D	2.20	1.55	1.50
2	D	501	HEM	CMB-C2B	2.19	1.55	1.50
2	C	502	HEM	CAA-C2A	2.18	1.55	1.52
2	B	501	HEM	FE-ND	2.15	2.07	1.96
5	A	504	OUS	C10-N01	-2.15	1.34	1.37
2	A	501	HEM	CMB-C2B	2.14	1.55	1.50
4	B	508	BTB	C1-C2	-2.11	1.50	1.53
2	C	502	HEM	FE-ND	2.04	2.07	1.96

All (98) bond angle outliers are listed below:

Mol	Chain	Res	Type	Atoms	Z	Observed(°)	Ideal(°)
2	D	501	HEM	CBA-CAA-C2A	-5.94	102.47	112.62
3	A	502	H4B	C8A-C4A-C4	5.42	119.38	114.57
3	B	502	H4B	C8A-C4A-C4	4.83	118.86	114.57
5	A	504	OUS	C04-C05-C10	4.56	120.48	118.01
3	C	503	H4B	C8A-C4A-C4	4.53	118.60	114.57
3	D	502	H4B	C8A-C4A-C4	4.28	118.38	114.57
2	C	502	HEM	C4B-CHC-C1C	4.22	128.13	122.56
2	C	502	HEM	CBD-CAD-C3D	-4.18	101.02	112.63
3	B	502	H4B	C4-C4A-N5	4.13	122.59	119.12
3	D	502	H4B	C4-C4A-N5	4.10	122.56	119.12
2	B	501	HEM	CAD-CBD-CGD	-3.99	105.01	113.60
2	D	501	HEM	C4B-CHC-C1C	3.97	127.80	122.56
3	C	503	H4B	N1-C2-N3	-3.86	119.37	125.42
2	B	501	HEM	C4D-ND-C1D	3.81	109.01	105.07
2	D	501	HEM	CMA-C3A-C4A	-3.71	122.77	128.46
3	A	502	H4B	N1-C2-N3	-3.68	119.64	125.42
5	B	503	OUS	O29-C24-C25	3.60	120.48	115.78
3	D	502	H4B	C2-N3-C4	3.56	121.59	115.93
5	B	503	OUS	C04-C05-C10	3.54	119.93	118.01
3	C	503	H4B	C4-C4A-N5	3.47	122.03	119.12
2	D	501	HEM	C1B-NB-C4B	3.45	108.64	105.07
3	D	502	H4B	N1-C2-N3	-3.43	120.04	125.42
3	A	502	H4B	C2-N3-C4	3.40	121.33	115.93
3	C	503	H4B	C2-N3-C4	3.40	121.33	115.93
5	C	504	OUS	O29-C24-C25	3.34	120.15	115.78
3	B	502	H4B	N1-C2-N3	-3.34	120.18	125.42
5	A	504	OUS	O29-C24-C25	3.27	120.05	115.78
2	A	501	HEM	C4B-CHC-C1C	3.24	126.84	122.56

*Continued on next page...*

*Continued from previous page...*

Mol	Chain	Res	Type	Atoms	Z	Observed(°)	Ideal(°)
2	A	501	HEM	C1B-NB-C4B	3.21	108.39	105.07
2	B	501	HEM	C1B-NB-C4B	3.17	108.35	105.07
2	D	501	HEM	C3D-C4D-ND	-3.13	106.68	110.17
2	D	501	HEM	C4D-ND-C1D	3.13	108.31	105.07
2	B	501	HEM	C3D-C4D-ND	-3.05	106.77	110.17
5	D	503	OUS	O29-C24-C25	3.04	119.76	115.78
3	B	502	H4B	N2-C2-N3	3.03	121.96	117.25
3	B	502	H4B	C2-N1-C8A	3.02	121.30	114.54
2	A	501	HEM	C3B-C2B-C1B	2.98	108.70	106.49
5	A	504	OUS	C05-C10-N01	-2.97	119.66	122.81
2	C	502	HEM	C3B-C2B-C1B	2.97	108.69	106.49
2	B	501	HEM	C4C-CHD-C1D	2.97	126.47	122.56
4	B	508	BTB	O4-C4-C2	-2.96	103.33	111.44
5	B	503	OUS	C05-C10-N01	-2.95	119.68	122.81
3	A	502	H4B	C2-N1-C8A	2.95	121.14	114.54
3	C	503	H4B	C2-N1-C8A	2.94	121.12	114.54
5	A	504	OUS	C08-C09-C10	-2.92	118.89	121.44
2	D	501	HEM	CAA-CBA-CGA	-2.90	105.62	113.76
2	D	501	HEM	CHD-C1D-ND	2.89	127.57	124.43
2	B	501	HEM	C3B-C2B-C1B	2.85	108.60	106.49
3	B	502	H4B	C2-N3-C4	2.82	120.41	115.93
2	C	502	HEM	C1B-NB-C4B	2.81	107.97	105.07
5	A	504	OUS	C36-N31-C32	2.78	121.66	116.85
2	D	501	HEM	O1A-CGA-CBA	-2.73	114.32	123.08
3	A	502	H4B	C4-C4A-N5	2.71	121.39	119.12
3	C	503	H4B	N2-C2-N3	2.68	121.41	117.25
3	D	502	H4B	C2-N1-C8A	2.67	120.51	114.54
2	D	501	HEM	CAD-CBD-CGD	-2.66	107.88	113.60
2	C	502	HEM	CMA-C3A-C4A	-2.63	124.42	128.46
2	A	501	HEM	C4D-ND-C1D	2.63	107.79	105.07
2	A	501	HEM	CBA-CAA-C2A	-2.59	108.19	112.62
2	A	501	HEM	C4C-CHD-C1D	2.59	125.97	122.56
5	C	504	OUS	C26-C21-C08	-2.48	116.77	120.86
2	D	501	HEM	CMA-C3A-C2A	2.44	129.54	124.94
2	D	501	HEM	C3B-C2B-C1B	2.41	108.28	106.49
5	B	503	OUS	C07-C08-C21	-2.40	117.20	121.36
2	C	502	HEM	CHC-C4B-C3B	2.34	128.15	124.57
2	A	501	HEM	CMC-C2C-C3C	2.34	129.05	124.68
2	D	501	HEM	O2A-CGA-CBA	2.33	121.53	114.03
3	D	502	H4B	C4A-N5-C6	-2.33	114.83	121.16
2	A	501	HEM	CHD-C1D-ND	2.32	126.95	124.43
2	D	501	HEM	CHC-C4B-C3B	2.31	128.11	124.57

*Continued on next page...*

Continued from previous page...

Mol	Chain	Res	Type	Atoms	Z	Observed(°)	Ideal(°)
2	C	502	HEM	CMC-C2C-C3C	2.25	128.89	124.68
2	B	501	HEM	C2D-C1D-ND	-2.23	107.21	109.88
5	A	504	OUS	O29-C24-C23	-2.22	119.17	123.97
2	D	501	HEM	C4C-CHD-C1D	2.21	125.48	122.56
5	C	504	OUS	C36-N31-C32	2.21	120.66	116.85
5	D	503	OUS	C36-N31-C32	2.20	120.66	116.85
5	D	503	OUS	C05-C10-N01	-2.19	120.49	122.81
5	A	504	OUS	C06-C05-C04	-2.17	119.51	123.66
5	B	503	OUS	C36-N31-C32	2.17	120.61	116.85
5	B	503	OUS	C06-C05-C04	-2.17	119.52	123.66
3	B	502	H4B	C4A-N5-C6	-2.13	115.35	121.16
2	C	502	HEM	CHA-C4D-ND	2.11	126.99	124.38
3	A	502	H4B	N2-C2-N3	2.10	120.51	117.25
2	A	501	HEM	CBD-CAD-C3D	-2.08	106.84	112.63
2	B	501	HEM	CMC-C2C-C3C	2.08	128.57	124.68
2	B	501	HEM	CAA-CBA-CGA	-2.08	107.94	113.76
2	B	501	HEM	C4B-CHC-C1C	2.07	125.29	122.56
5	C	504	OUS	C05-C10-N01	-2.05	120.63	122.81
2	C	502	HEM	C3D-C4D-ND	-2.04	107.89	110.17
2	B	501	HEM	CMA-C3A-C4A	-2.04	125.33	128.46
2	A	501	HEM	CHC-C4B-C3B	2.03	127.68	124.57
2	A	501	HEM	C3D-C4D-ND	-2.03	107.91	110.17
5	A	504	OUS	C33-C32-N31	-2.03	119.75	123.72
5	B	503	OUS	C30-O29-C24	2.03	121.75	117.76
5	D	503	OUS	C08-C09-C10	-2.02	119.67	121.44
2	B	501	HEM	CHA-C4D-ND	2.02	126.88	124.38
2	B	501	HEM	CHC-C4B-C3B	2.00	127.64	124.57
2	B	501	HEM	O2A-CGA-CBA	2.00	120.46	114.03

There are no chirality outliers.

All (91) torsion outliers are listed below:

Mol	Chain	Res	Type	Atoms
2	C	502	HEM	C1A-C2A-CAA-CBA
2	C	502	HEM	C3A-C2A-CAA-CBA
3	A	502	H4B	N5-C6-C9-O9
3	A	502	H4B	C7-C6-C9-O9
3	A	502	H4B	C7-C6-C9-C10
3	B	502	H4B	N5-C6-C9-O9
3	B	502	H4B	C7-C6-C9-O9
3	B	502	H4B	C7-C6-C9-C10
3	C	503	H4B	C7-C6-C9-O9

Continued on next page...

*Continued from previous page...*

Mol	Chain	Res	Type	Atoms
3	C	503	H4B	C7-C6-C9-C10
3	D	502	H4B	N5-C6-C9-O9
3	D	502	H4B	N5-C6-C9-C10
3	D	502	H4B	C7-C6-C9-O9
3	D	502	H4B	C7-C6-C9-C10
4	A	503	BTB	O1-C1-C2-C3
4	A	503	BTB	O1-C1-C2-C4
4	A	503	BTB	O1-C1-C2-N
4	A	503	BTB	C4-C2-C3-O3
4	A	503	BTB	N-C2-C3-O3
4	A	505	BTB	O1-C1-C2-C3
4	A	505	BTB	O1-C1-C2-C4
4	A	505	BTB	O1-C1-C2-N
4	A	505	BTB	C1-C2-C4-O4
4	A	505	BTB	C3-C2-C4-O4
4	A	505	BTB	N-C2-C4-O4
4	B	504	BTB	O1-C1-C2-C3
4	B	504	BTB	O1-C1-C2-C4
4	B	504	BTB	O1-C1-C2-N
4	B	504	BTB	C1-C2-C3-O3
4	B	504	BTB	N-C2-C3-O3
4	B	505	BTB	C1-C2-C3-O3
4	B	505	BTB	C4-C2-C3-O3
4	B	505	BTB	N-C2-C3-O3
4	B	505	BTB	C1-C2-C4-O4
4	B	505	BTB	C3-C2-C4-O4
4	B	508	BTB	C1-C2-C3-O3
4	B	508	BTB	N-C2-C3-O3
4	B	508	BTB	C8-C7-N-C5
4	C	505	BTB	C1-C2-C3-O3
4	C	505	BTB	C4-C2-C3-O3
4	C	505	BTB	N-C2-C3-O3
4	D	504	BTB	O1-C1-C2-C3
4	D	504	BTB	O1-C1-C2-C4
4	D	504	BTB	O1-C1-C2-N
4	D	505	BTB	O1-C1-C2-C3
4	D	505	BTB	O1-C1-C2-C4
4	D	505	BTB	O1-C1-C2-N
4	D	505	BTB	C1-C2-C4-O4
4	D	505	BTB	C3-C2-C4-O4
4	D	505	BTB	N-C2-C4-O4
4	D	505	BTB	C1-C2-N-C7

*Continued on next page...*



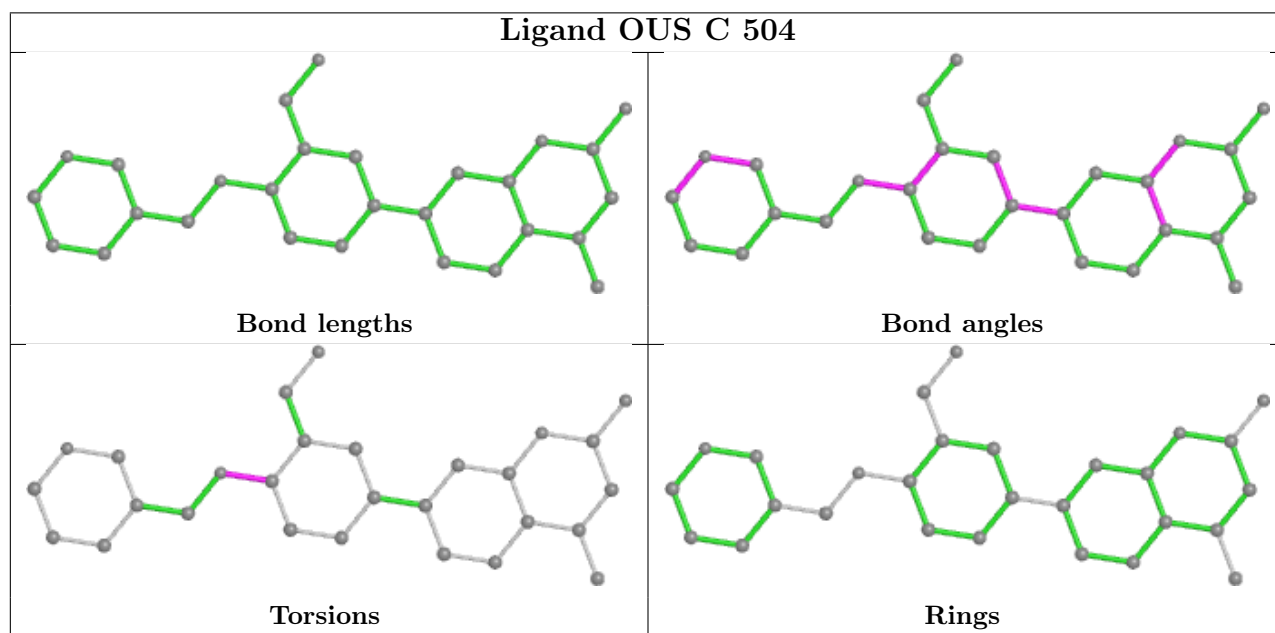
*Continued from previous page...*

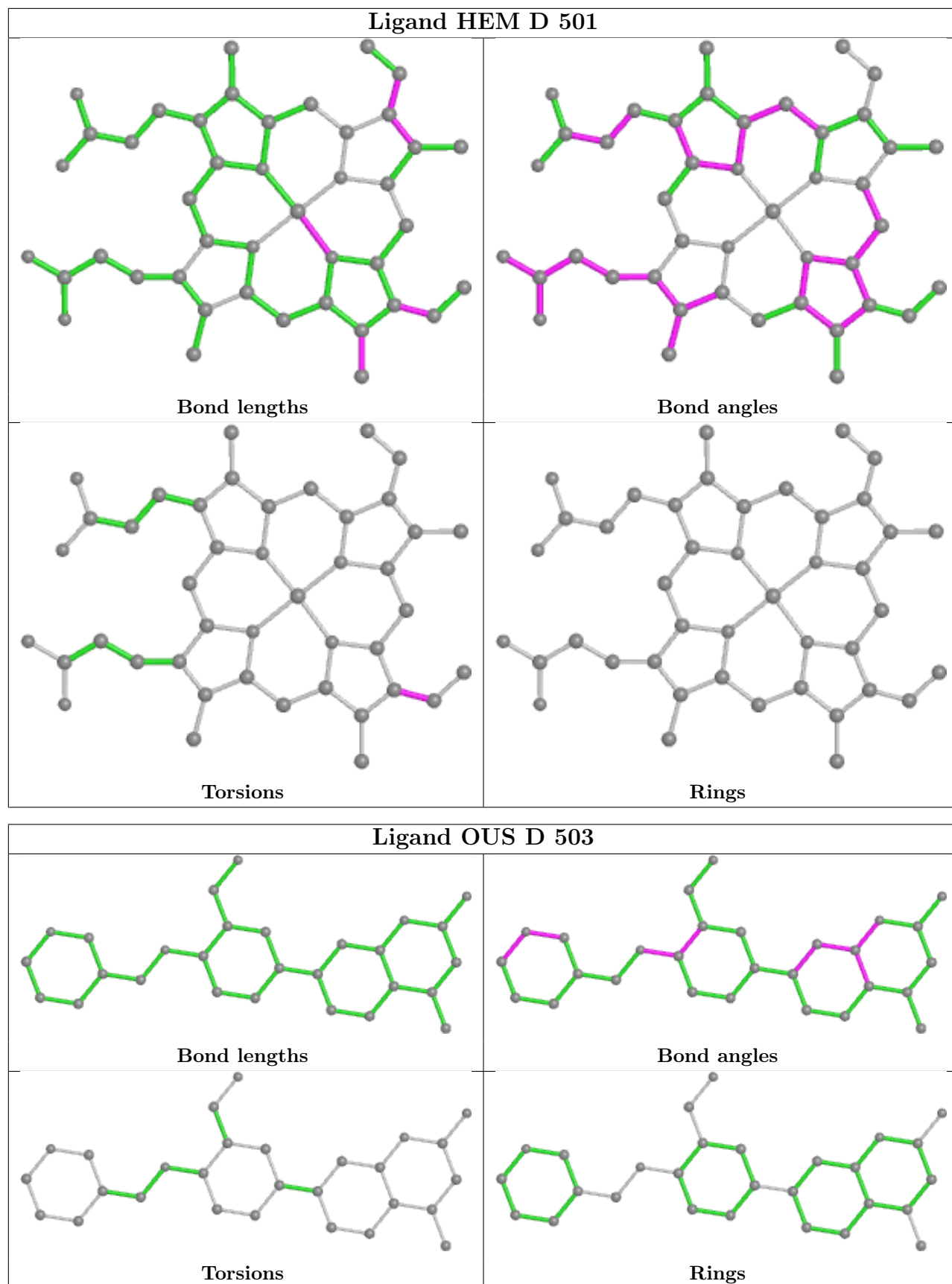
Mol	Chain	Res	Type	Atoms
4	D	505	BTB	C3-C2-N-C5
4	D	505	BTB	C3-C2-N-C7
4	D	505	BTB	C4-C2-N-C7
4	D	505	BTB	C8-C7-N-C5
7	C	507	GOL	O1-C1-C2-C3
7	C	507	GOL	C1-C2-C3-O3
4	B	505	BTB	N-C7-C8-O8
2	C	502	HEM	C2A-CAA-CBA-CGA
7	A	507	GOL	C1-C2-C3-O3
7	C	507	GOL	O1-C1-C2-O2
2	A	501	HEM	C4B-C3B-CAB-CBB
4	A	505	BTB	N-C5-C6-O6
7	C	507	GOL	O2-C2-C3-O3
4	D	505	BTB	N-C7-C8-O8
4	B	508	BTB	N-C7-C8-O8
3	B	502	H4B	N5-C6-C9-C10
5	C	504	OUS	C23-C24-O29-C30
2	B	501	HEM	C4B-C3B-CAB-CBB
2	C	502	HEM	C4B-C3B-CAB-CBB
2	D	501	HEM	C4B-C3B-CAB-CBB
5	C	504	OUS	C25-C24-O29-C30
5	A	504	OUS	C23-C24-O29-C30
4	A	503	BTB	C1-C2-C3-O3
4	B	504	BTB	C4-C2-C3-O3
2	A	501	HEM	C2A-CAA-CBA-CGA
2	B	501	HEM	C2A-CAA-CBA-CGA
4	B	505	BTB	N-C2-C4-O4
4	B	508	BTB	N-C2-C4-O4
4	D	505	BTB	C1-C2-N-C5
4	D	505	BTB	C4-C2-N-C5
3	A	502	H4B	N5-C6-C9-C10
5	A	504	OUS	C25-C24-O29-C30
2	C	502	HEM	C3D-CAD-CBD-CGD
2	A	501	HEM	CAA-CBA-CGA-O2A
5	B	503	OUS	C23-C24-O29-C30
5	B	503	OUS	C26-C25-C27-N28
2	A	501	HEM	CAA-CBA-CGA-O1A
3	C	503	H4B	N5-C6-C9-O9
4	B	508	BTB	C4-C2-C3-O3
4	B	508	BTB	C3-C2-C4-O4

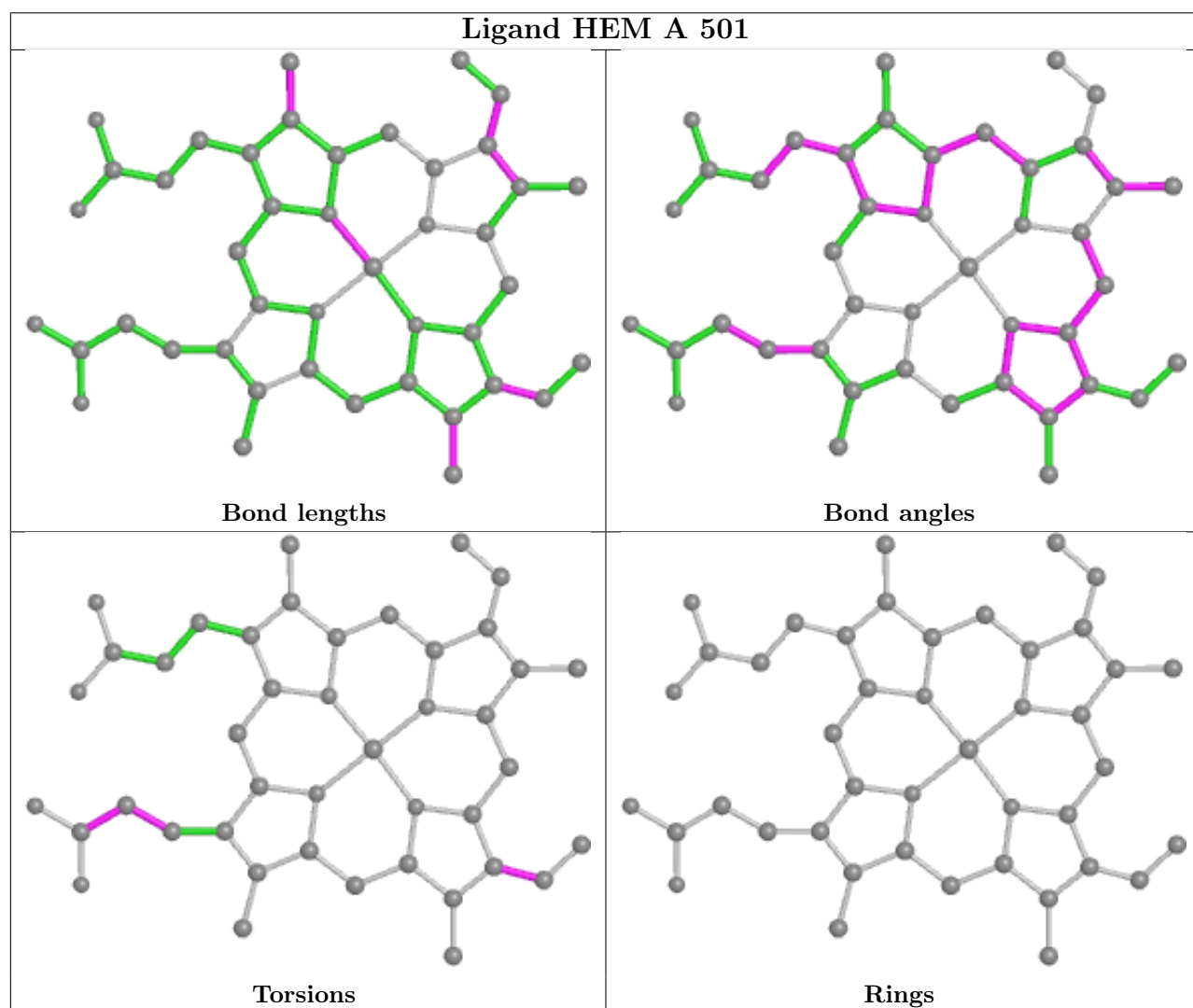
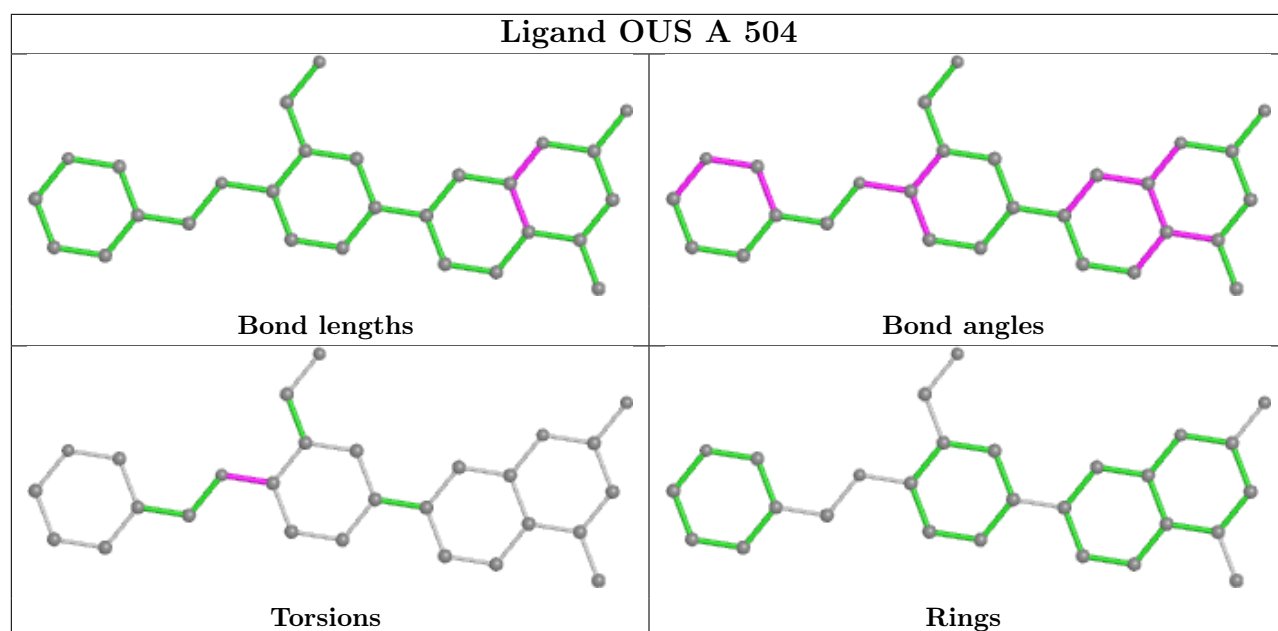
There are no ring outliers.

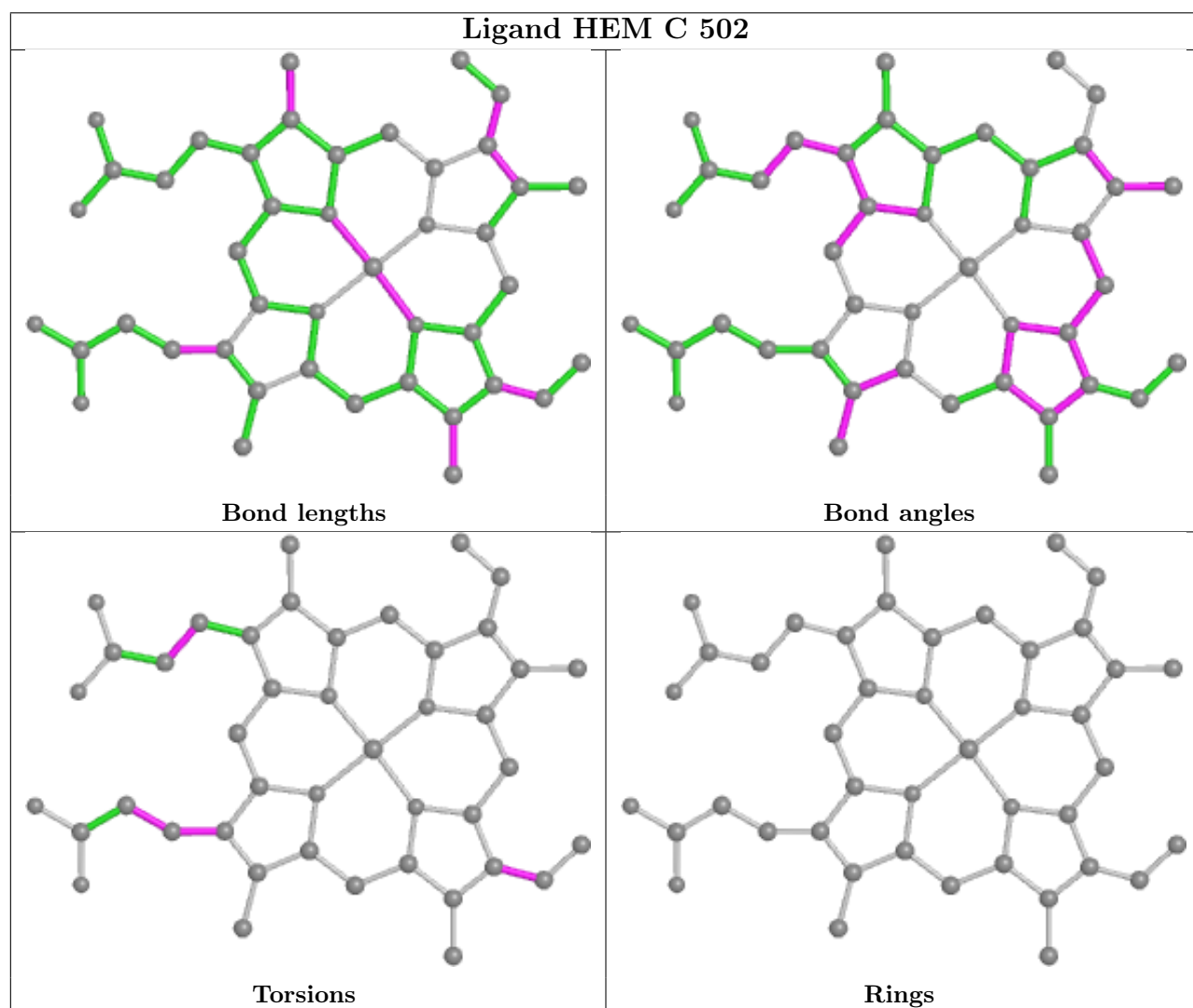
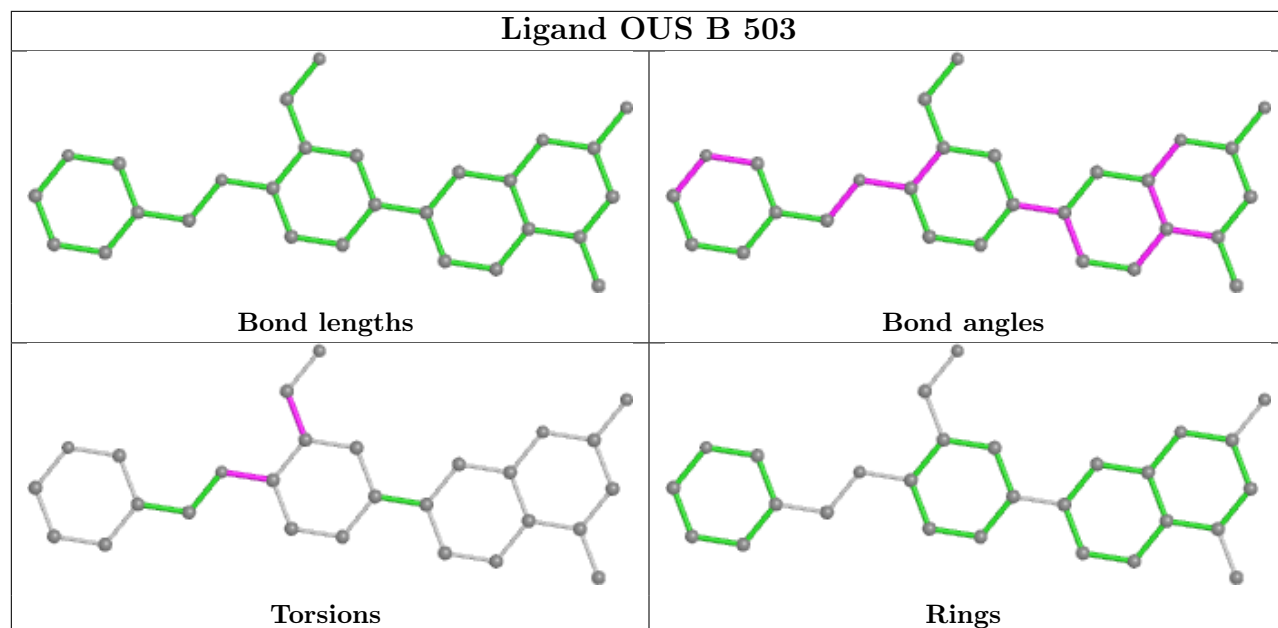
No monomer is involved in short contacts.

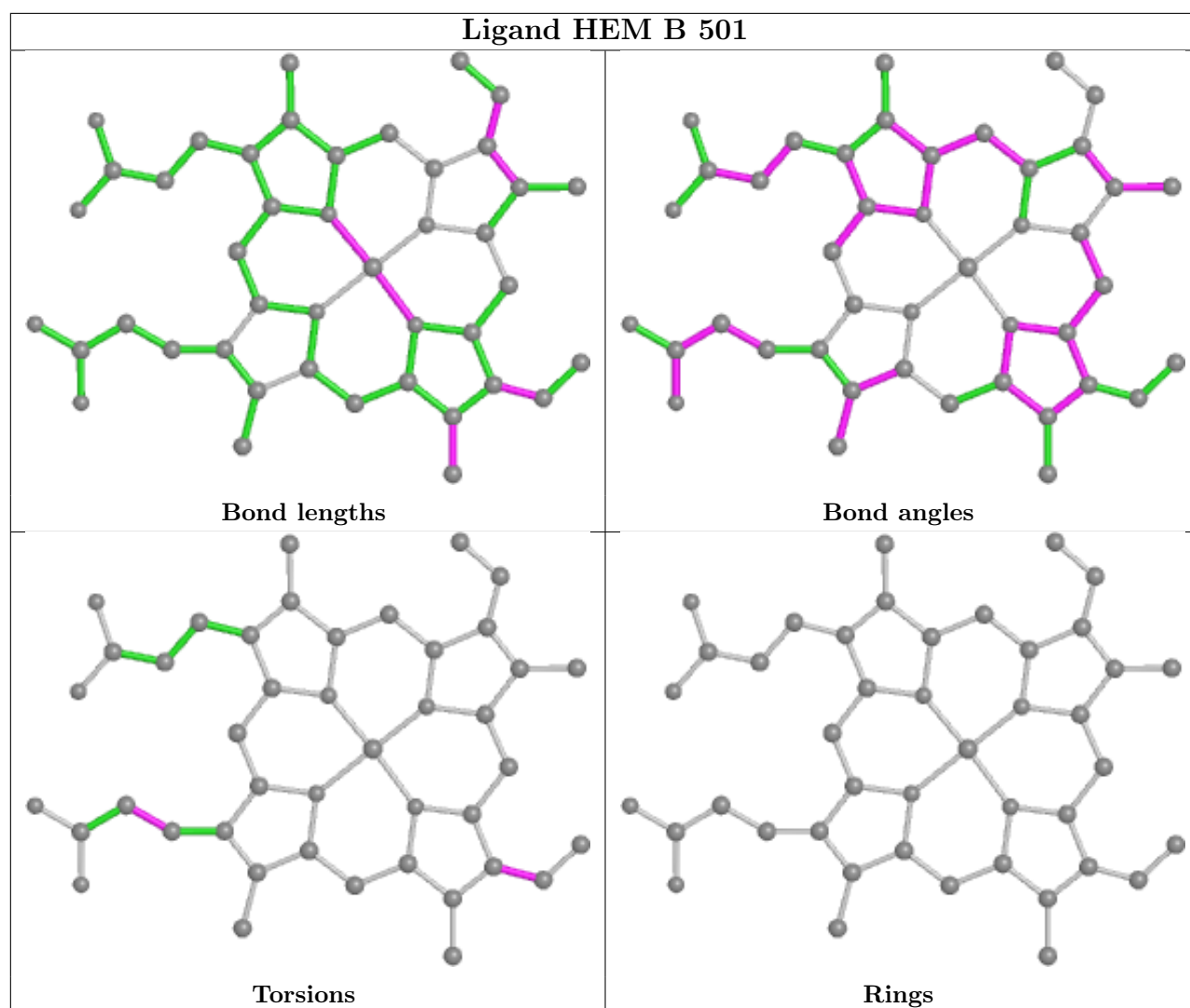
The following is a two-dimensional graphical depiction of Mogul quality analysis of bond lengths, bond angles, torsion angles, and ring geometry for all instances of the Ligand of Interest. In addition, ligands with molecular weight > 250 and outliers as shown on the validation Tables will also be included. For torsion angles, if less than 5% of the Mogul distribution of torsion angles is within 10 degrees of the torsion angle in question, then that torsion angle is considered an outlier. Any bond that is central to one or more torsion angles identified as an outlier by Mogul will be highlighted in the graph. For rings, the root-mean-square deviation (RMSD) between the ring in question and similar rings identified by Mogul is calculated over all ring torsion angles. If the average RMSD is greater than 60 degrees and the minimal RMSD between the ring in question and any Mogul-identified rings is also greater than 60 degrees, then that ring is considered an outlier. The outliers are highlighted in purple. The color gray indicates Mogul did not find sufficient equivalents in the CSD to analyse the geometry.











#### 4.7 Other polymers [i](#)

There are no such residues in this entry.

#### 4.8 Polymer linkage issues [i](#)

There are no chain breaks in this entry.

## 5 Fit of model and data

### 5.1 Protein, DNA and RNA chains

EDS failed to run properly - this section is therefore empty.

### 5.2 Non-standard residues in protein, DNA, RNA chains

EDS failed to run properly - this section is therefore empty.

### 5.3 Carbohydrates

EDS failed to run properly - this section is therefore empty.

### 5.4 Ligands

EDS failed to run properly - this section is therefore empty.

### 5.5 Other polymers

EDS failed to run properly - this section is therefore empty.