



Full wwPDB X-ray Structure Validation Report ⓘ

Oct 27, 2022 – 01:54 pm BST

PDB ID : 7PP1
Title : Crystal structure of the P2Y12 receptor in complex with the inverse agonist selatogrel.
Authors : Mac Sweeney, A.; Tidten-Luksch, N.
Deposited on : 2021-09-13
Resolution : 2.78 Å(reported)

This is a Full wwPDB X-ray Structure Validation Report for a publicly released PDB entry.

We welcome your comments at validation@mail.wwpdb.org

A user guide is available at

<https://www.wwpdb.org/validation/2017/XrayValidationReportHelp>

with specific help available everywhere you see the ⓘ symbol.

The types of validation reports are described at

<http://www.wwpdb.org/validation/2017/FAQs#types>.

The following versions of software and data (see [references ⓘ](#)) were used in the production of this report:

MolProbity : 4.02b-467
Mogul : 1.8.4, CSD as541be (2020)
Xtriage (Phenix) : 1.13
EDS : 2.31.2
buster-report : 1.1.7 (2018)
Percentile statistics : 20191225.v01 (using entries in the PDB archive December 25th 2019)
Refmac : 5.8.0267
CCP4 : 7.1.010 (Gargrove)
Ideal geometry (proteins) : Engh & Huber (2001)
Ideal geometry (DNA, RNA) : Parkinson et al. (1996)
Validation Pipeline (wwPDB-VP) : 2.31.2

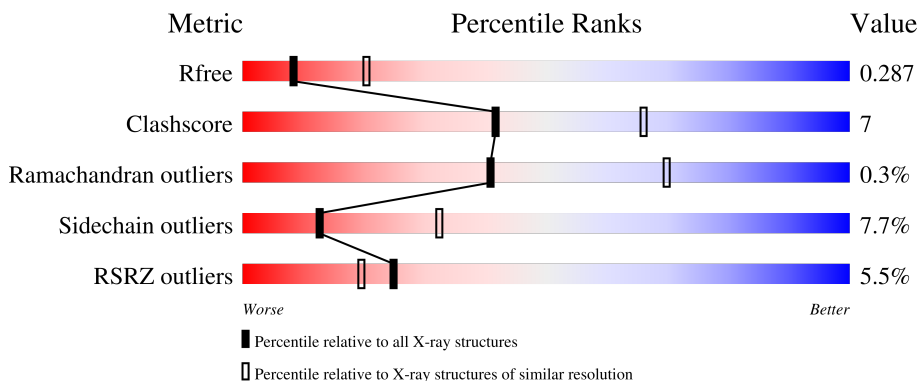
1 Overall quality at a glance

The following experimental techniques were used to determine the structure:

X-RAY DIFFRACTION

The reported resolution of this entry is 2.78 Å.

Percentile scores (ranging between 0-100) for global validation metrics of the entry are shown in the following graphic. The table shows the number of entries on which the scores are based.



Metric	Whole archive (#Entries)	Similar resolution (#Entries, resolution range(Å))
R_{free}	130704	4107 (2.80-2.76)
Clashscore	141614	4575 (2.80-2.76)
Ramachandran outliers	138981	4487 (2.80-2.76)
Sidechain outliers	138945	4489 (2.80-2.76)
RSRZ outliers	127900	4027 (2.80-2.76)

The table below summarises the geometric issues observed across the polymeric chains and their fit to the electron density. The red, orange, yellow and green segments of the lower bar indicate the fraction of residues that contain outliers for ≥ 3 , 2, 1 and 0 types of geometric quality criteria respectively. A grey segment represents the fraction of residues that are not modelled. The numeric value for each fraction is indicated below the corresponding segment, with a dot representing fractions $\leq 5\%$. The upper red bar (where present) indicates the fraction of residues that have poor fit to the electron density. The numeric value is given above the bar.

Mol	Chain	Length	Quality of chain
1	AAA	466	

2 Entry composition

There are 4 unique types of molecules in this entry. The entry contains 2909 atoms, of which 0 are hydrogens and 0 are deuteriums.

In the tables below, the ZeroOcc column contains the number of atoms modelled with zero occupancy, the AltConf column contains the number of residues with at least one atom in alternate conformation and the Trace column contains the number of residues modelled with at most 2 atoms.

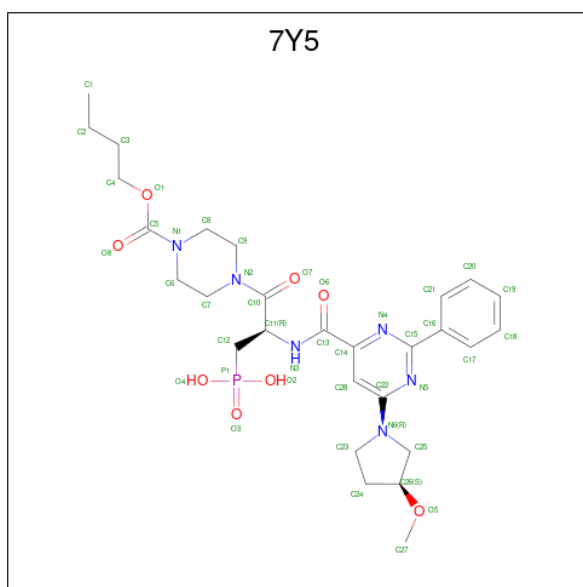
- Molecule 1 is a protein called P2Y purinoceptor 12,Soluble cytochrome b562,P2Y purinoceptor 12.

Mol	Chain	Residues	Atoms					ZeroOcc	AltConf	Trace
			Total	C	N	O	S			
1	AAA	363	2837	1875	452	496	14	0	0	0

There are 23 discrepancies between the modelled and reference sequences:

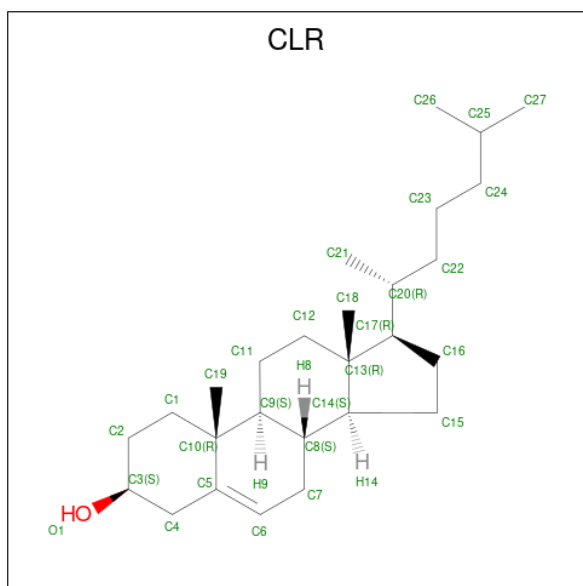
Chain	Residue	Modelled	Actual	Comment	Reference
AAA	-8	ASP	-	expression tag	UNP Q9H244
AAA	-7	TYR	-	expression tag	UNP Q9H244
AAA	-6	LYS	-	expression tag	UNP Q9H244
AAA	-5	ASP	-	expression tag	UNP Q9H244
AAA	-4	ASP	-	expression tag	UNP Q9H244
AAA	-3	ASP	-	expression tag	UNP Q9H244
AAA	-2	ASP	-	expression tag	UNP Q9H244
AAA	-1	GLY	-	expression tag	UNP Q9H244
AAA	0	ALA	-	expression tag	UNP Q9H244
AAA	1	PRO	-	expression tag	UNP Q9H244
AAA	1007	TRP	MET	engineered mutation	UNP P0ABE7
AAA	1102	ILE	HIS	engineered mutation	UNP P0ABE7
AAA	1106	LEU	ARG	engineered mutation	UNP P0ABE7
AAA	294	ASN	ASP	engineered mutation	UNP Q9H244
AAA	343	GLY	-	expression tag	UNP Q9H244
AAA	344	ARG	-	expression tag	UNP Q9H244
AAA	345	PRO	-	expression tag	UNP Q9H244
AAA	346	LEU	-	expression tag	UNP Q9H244
AAA	347	GLU	-	expression tag	UNP Q9H244
AAA	348	VAL	-	expression tag	UNP Q9H244
AAA	349	LEU	-	expression tag	UNP Q9H244
AAA	350	PHE	-	expression tag	UNP Q9H244
AAA	351	GLN	-	expression tag	UNP Q9H244

- Molecule 2 is Selatogrel (three-letter code: 7Y5) (formula: C₂₈H₃₉N₆O₈P) (labeled as "Ligand of Interest" by depositor).



Mol	Chain	Residues	Atoms					ZeroOcc	AltConf
			Total	C	N	O	P		
2	AAA	1	43	28	6	8	1	0	0

- Molecule 3 is CHOLESTEROL (three-letter code: CLR) (formula: $C_{27}H_{46}O$).



Mol	Chain	Residues	Atoms			ZeroOcc	AltConf
			Total	C	O		
3	AAA	1	28	27	1	0	0

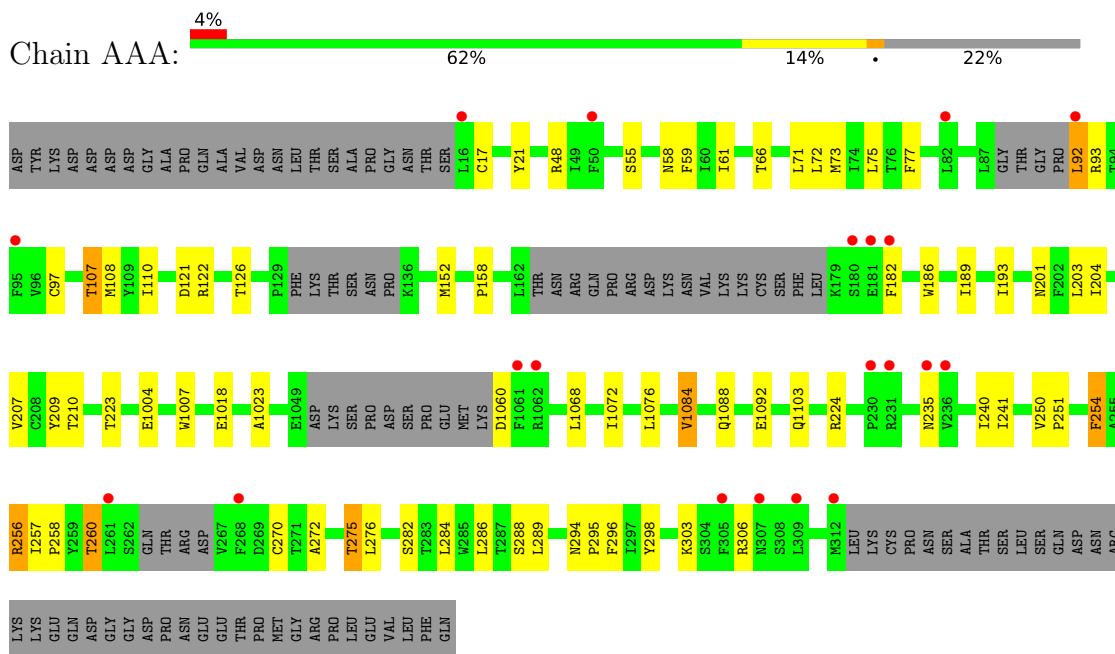
- Molecule 4 is water.

Mol	Chain	Residues	Atoms	ZeroOcc	AltConf
4	AAA	1	Total O 1 1	0	0

3 Residue-property plots [i](#)

These plots are drawn for all protein, RNA, DNA and oligosaccharide chains in the entry. The first graphic for a chain summarises the proportions of the various outlier classes displayed in the second graphic. The second graphic shows the sequence view annotated by issues in geometry and electron density. Residues are color-coded according to the number of geometric quality criteria for which they contain at least one outlier: green = 0, yellow = 1, orange = 2 and red = 3 or more. A red dot above a residue indicates a poor fit to the electron density ($RSRZ > 2$). Stretches of 2 or more consecutive residues without any outlier are shown as a green connector. Residues present in the sample, but not in the model, are shown in grey.

- Molecule 1: P2Y purinoceptor 12,Soluble cytochrome b562,P2Y purinoceptor 12



4 Data and refinement statistics

Property	Value	Source
Space group	C 1 2 1	Depositor
Cell constants a, b, c, α , β , γ	98.09Å 155.37Å 47.31Å 90.00° 111.48° 90.00°	Depositor
Resolution (Å)	45.68 – 2.78 45.64 – 2.78	Depositor EDS
% Data completeness (in resolution range)	99.0 (45.68-2.78) 99.0 (45.64-2.78)	Depositor EDS
R_{merge}	(Not available)	Depositor
R_{sym}	(Not available)	Depositor
$\langle I/\sigma(I) \rangle$ ¹	1.09 (at 2.77Å)	Xtrriage
Refinement program	REFMAC 5.8.0267	Depositor
R, R_{free}	0.242 , 0.286 0.243 , 0.287	Depositor DCC
R_{free} test set	1630 reflections (9.95%)	wwPDB-VP
Wilson B-factor (Å ²)	85.5	Xtrriage
Anisotropy	0.131	Xtrriage
Bulk solvent k_{sol} (e/Å ³), B_{sol} (Å ²)	(Not available) , (Not available)	EDS
L-test for twinning ²	$\langle L \rangle = 0.50$, $\langle L^2 \rangle = 0.33$	Xtrriage
Estimated twinning fraction	0.000 for 1/2*h+1/2*k+1,3/2*h-1/2*k+1,-1 0.000 for 1/2*h-1/2*k+1,-3/2*h-1/2*k-1,-1	Xtrriage
F_o, F_c correlation	0.94	EDS
Total number of atoms	2909	wwPDB-VP
Average B, all atoms (Å ²)	91.0	wwPDB-VP

Xtrriage's analysis on translational NCS is as follows: *The largest off-origin peak in the Patterson function is 9.17% of the height of the origin peak. No significant pseudotranslation is detected.*

¹Intensities estimated from amplitudes.

²Theoretical values of $\langle |L| \rangle$, $\langle L^2 \rangle$ for acentric reflections are 0.5, 0.333 respectively for untwinned datasets, and 0.375, 0.2 for perfectly twinned datasets.

5 Model quality [i](#)

5.1 Standard geometry [i](#)

Bond lengths and bond angles in the following residue types are not validated in this section: 7Y5, CLR

The Z score for a bond length (or angle) is the number of standard deviations the observed value is removed from the expected value. A bond length (or angle) with $|Z| > 5$ is considered an outlier worth inspection. RMSZ is the root-mean-square of all Z scores of the bond lengths (or angles).

Mol	Chain	Bond lengths		Bond angles	
		RMSZ	# Z >5	RMSZ	# Z >5
1	AAA	0.25	0/2897	0.55	0/3941

There are no bond length outliers.

There are no bond angle outliers.

There are no chirality outliers.

There are no planarity outliers.

5.2 Too-close contacts [i](#)

In the following table, the Non-H and H(model) columns list the number of non-hydrogen atoms and hydrogen atoms in the chain respectively. The H(added) column lists the number of hydrogen atoms added and optimized by MolProbity. The Clashes column lists the number of clashes within the asymmetric unit, whereas Symm-Clashes lists symmetry-related clashes.

Mol	Chain	Non-H	H(model)	H(added)	Clashes	Symm-Clashes
1	AAA	2837	0	2805	39	0
2	AAA	43	0	0	0	0
3	AAA	28	0	46	2	0
4	AAA	1	0	0	0	0
All	All	2909	0	2851	40	0

The all-atom clashscore is defined as the number of clashes found per 1000 atoms (including hydrogen atoms). The all-atom clashscore for this structure is 7.

All (40) close contacts within the same asymmetric unit are listed below, sorted by their clash magnitude.

Atom-1	Atom-2	Interatomic distance (Å)	Clash overlap (Å)
1:AAA:158:PRO:HG2	1:AAA:186:TRP:CZ2	2.22	0.74
1:AAA:1018:GLU:HG2	1:AAA:1092:GLU:OE1	1.89	0.71
1:AAA:110:ILE:HG12	1:AAA:152:MET:HG3	1.76	0.68
1:AAA:66:THR:HG22	1:AAA:298:TYR:OH	1.93	0.67
1:AAA:71:LEU:O	1:AAA:75:LEU:HG	1.98	0.62
1:AAA:1068:LEU:O	1:AAA:1072:ILE:HG13	2.02	0.60
1:AAA:272:ALA:O	1:AAA:275:THR:HG22	2.02	0.60
1:AAA:257:ILE:CG1	1:AAA:258:PRO:HD3	2.33	0.58
1:AAA:303:LYS:HA	1:AAA:306:ARG:HH12	1.70	0.55
1:AAA:73:MET:HB2	1:AAA:107:THR:HG21	1.89	0.54
1:AAA:207:VAL:HG11	3:AAA:1202:CLR:H72	1.90	0.53
1:AAA:257:ILE:HG13	1:AAA:258:PRO:HD3	1.91	0.52
1:AAA:189:ILE:O	1:AAA:193:ILE:HG12	2.09	0.51
1:AAA:201:ASN:HA	1:AAA:204:ILE:HD12	1.93	0.50
1:AAA:286:LEU:O	1:AAA:289:LEU:HB3	2.12	0.49
1:AAA:295:PRO:HA	1:AAA:298:TYR:CD2	2.48	0.49
1:AAA:158:PRO:HB2	1:AAA:186:TRP:NE1	2.28	0.49
1:AAA:1007:TRP:CZ3	1:AAA:1103:GLN:HG3	2.48	0.49
1:AAA:250:VAL:HG13	1:AAA:254:PHE:HD2	1.79	0.48
1:AAA:240:ILE:HD11	1:AAA:296:PHE:HB3	1.97	0.47
1:AAA:223:THR:O	1:AAA:1004:GLU:HG2	2.15	0.47
1:AAA:250:VAL:HG13	1:AAA:254:PHE:CD2	2.52	0.45
1:AAA:294:ASN:N	1:AAA:295:PRO:CD	2.79	0.45
3:AAA:1202:CLR:H222	3:AAA:1202:CLR:H162	1.66	0.45
1:AAA:122:ARG:NE	1:AAA:122:ARG:HA	2.31	0.45
1:AAA:257:ILE:HG12	1:AAA:258:PRO:HD3	1.99	0.45
1:AAA:55:SER:HB3	1:AAA:61:ILE:HG13	1.98	0.44
1:AAA:58:ASN:HB2	1:AAA:121:ASP:OD1	2.18	0.44
1:AAA:1088:GLN:O	1:AAA:1092:GLU:HG2	2.18	0.43
1:AAA:256:ARG:HG2	1:AAA:260:THR:HB	2.00	0.43
1:AAA:73:MET:HB2	1:AAA:107:THR:CG2	2.49	0.42
1:AAA:257:ILE:HA	1:AAA:260:THR:HG22	2.00	0.42
1:AAA:59:PHE:HB2	1:AAA:121:ASP:OD2	2.19	0.42
1:AAA:250:VAL:N	1:AAA:251:PRO:CD	2.82	0.41
1:AAA:209:TYR:OH	1:AAA:241:ILE:HB	2.21	0.41
1:AAA:77:PHE:CZ	1:AAA:288:SER:HB3	2.55	0.41
1:AAA:1023:ALA:HB2	1:AAA:1084:VAL:HG12	2.03	0.41
1:AAA:303:LYS:HA	1:AAA:306:ARG:NH1	2.35	0.40
1:AAA:92:LEU:HB2	1:AAA:93:ARG:H	1.76	0.40
1:AAA:122:ARG:O	1:AAA:126:THR:HG23	2.22	0.40

There are no symmetry-related clashes.

5.3 Torsion angles [i](#)

5.3.1 Protein backbone [i](#)

In the following table, the Percentiles column shows the percent Ramachandran outliers of the chain as a percentile score with respect to all X-ray entries followed by that with respect to entries of similar resolution.

The Analysed column shows the number of residues for which the backbone conformation was analysed, and the total number of residues.

Mol	Chain	Analysed	Favoured	Allowed	Outliers	Percentiles
1	AAA	351/466 (75%)	331 (94%)	19 (5%)	1 (0%)	41 70

All (1) Ramachandran outliers are listed below:

Mol	Chain	Res	Type
1	AAA	235	ASN

5.3.2 Protein sidechains [i](#)

In the following table, the Percentiles column shows the percent sidechain outliers of the chain as a percentile score with respect to all X-ray entries followed by that with respect to entries of similar resolution.

The Analysed column shows the number of residues for which the sidechain conformation was analysed, and the total number of residues.

Mol	Chain	Analysed	Rotameric	Outliers	Percentiles
1	AAA	297/420 (71%)	274 (92%)	23 (8%)	13 32

All (23) residues with a non-rotameric sidechain are listed below:

Mol	Chain	Res	Type
1	AAA	17	CYS
1	AAA	21	TYR
1	AAA	48	ARG
1	AAA	72	LEU
1	AAA	92	LEU
1	AAA	97	CYS
1	AAA	107	THR
1	AAA	108	MET
1	AAA	182	PHE
1	AAA	203	LEU

Continued on next page...

Continued from previous page...

Mol	Chain	Res	Type
1	AAA	210	THR
1	AAA	1060	ASP
1	AAA	1076	LEU
1	AAA	1084	VAL
1	AAA	224	ARG
1	AAA	254	PHE
1	AAA	256	ARG
1	AAA	260	THR
1	AAA	270	CYS
1	AAA	275	THR
1	AAA	276	LEU
1	AAA	282	SER
1	AAA	284	LEU

Sometimes sidechains can be flipped to improve hydrogen bonding and reduce clashes. There are no such sidechains identified.

5.3.3 RNA [i](#)

There are no RNA molecules in this entry.

5.4 Non-standard residues in protein, DNA, RNA chains [i](#)

There are no non-standard protein/DNA/RNA residues in this entry.

5.5 Carbohydrates [i](#)

There are no monosaccharides in this entry.

5.6 Ligand geometry [i](#)

2 ligands are modelled in this entry.

In the following table, the Counts columns list the number of bonds (or angles) for which Mogul statistics could be retrieved, the number of bonds (or angles) that are observed in the model and the number of bonds (or angles) that are defined in the Chemical Component Dictionary. The Link column lists molecule types, if any, to which the group is linked. The Z score for a bond length (or angle) is the number of standard deviations the observed value is removed from the expected value. A bond length (or angle) with $|Z| > 2$ is considered an outlier worth inspection. RMSZ is the root-mean-square of all Z scores of the bond lengths (or angles).

Mol	Type	Chain	Res	Link	Bond lengths			Bond angles		
					Counts	RMSZ	# Z > 2	Counts	RMSZ	# Z > 2
2	7Y5	AAA	1201	-	45,46,46	0.54	0	61,64,64	0.60	1 (1%)
3	CLR	AAA	1202	-	31,31,31	0.35	0	48,48,48	0.67	0

In the following table, the Chirals column lists the number of chiral outliers, the number of chiral centers analysed, the number of these observed in the model and the number defined in the Chemical Component Dictionary. Similar counts are reported in the Torsion and Rings columns. '-' means no outliers of that kind were identified.

Mol	Type	Chain	Res	Link	Chirals	Torsions	Rings
2	7Y5	AAA	1201	-	-	9/40/59/59	0/4/4/4
3	CLR	AAA	1202	-	-	5/10/68/68	0/4/4/4

There are no bond length outliers.

All (1) bond angle outliers are listed below:

Mol	Chain	Res	Type	Atoms	Z	Observed(°)	Ideal(°)
2	AAA	1201	7Y5	O3-P1-C12	-2.52	106.88	111.54

There are no chirality outliers.

All (14) torsion outliers are listed below:

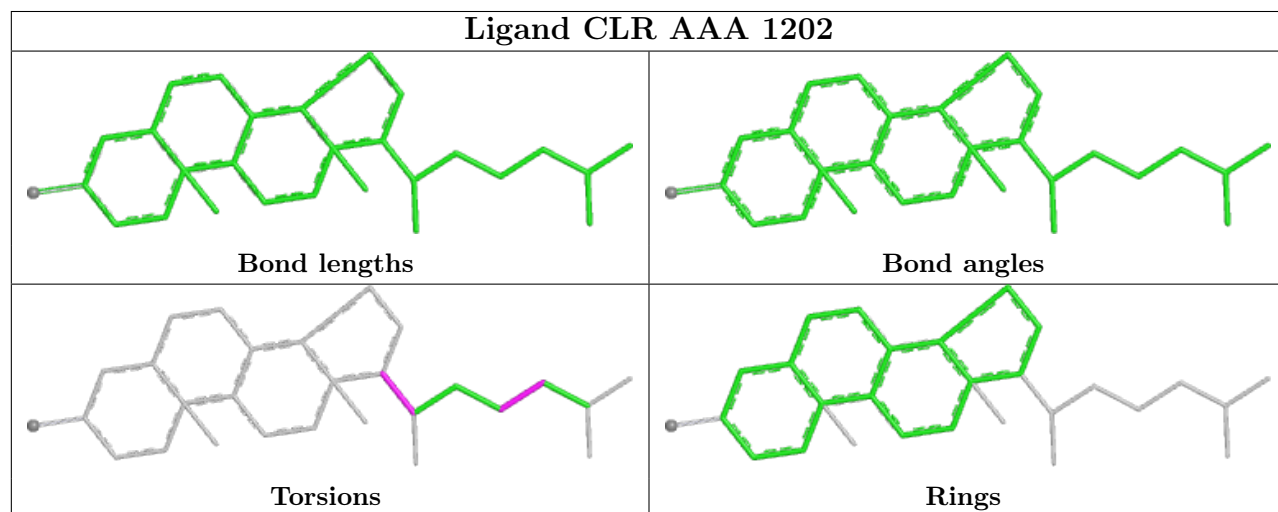
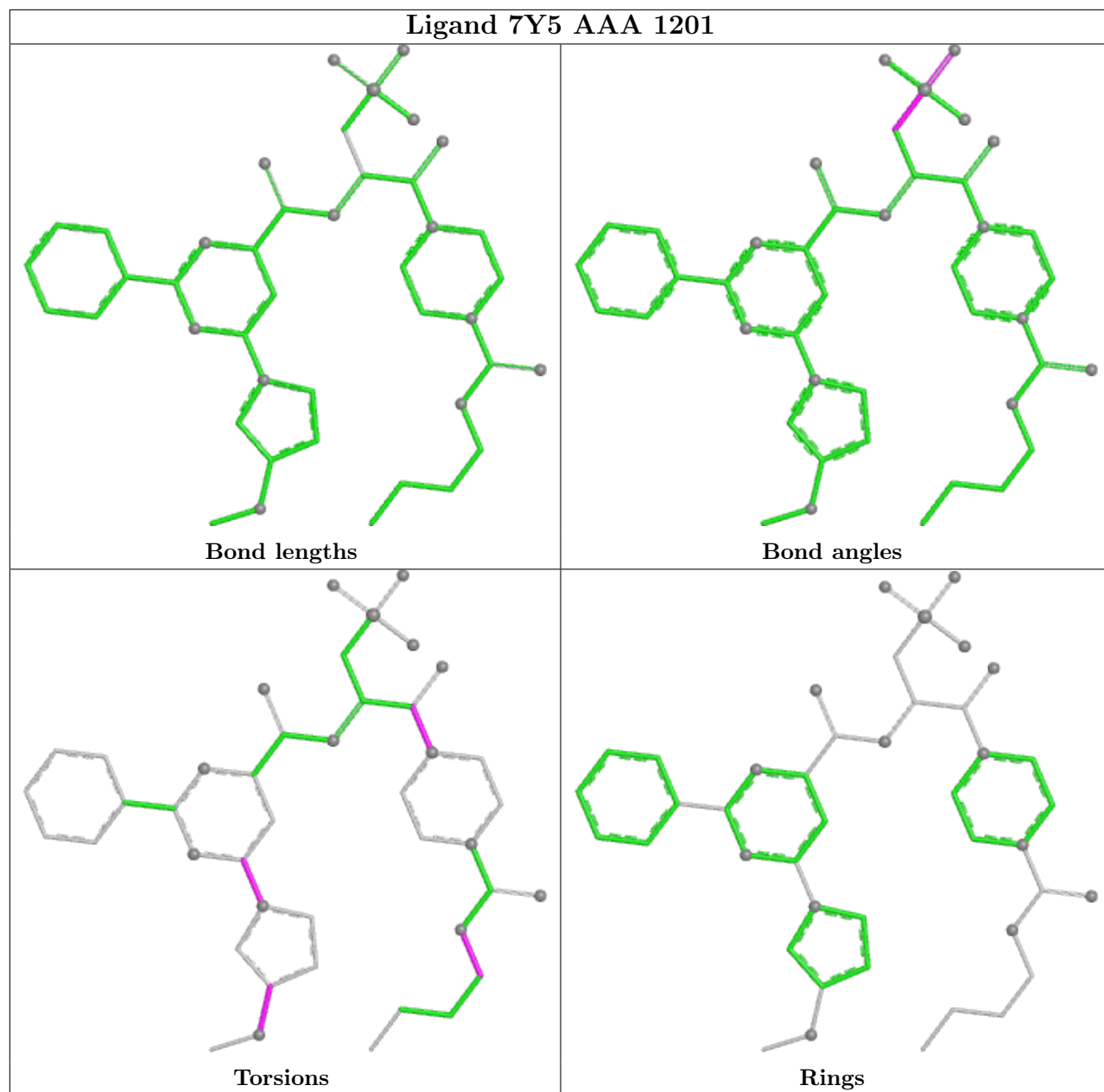
Mol	Chain	Res	Type	Atoms
2	AAA	1201	7Y5	C11-C10-N2-C7
2	AAA	1201	7Y5	C28-C22-N6-C25
2	AAA	1201	7Y5	N5-C22-N6-C25
3	AAA	1202	CLR	C13-C17-C20-C22
2	AAA	1201	7Y5	O7-C10-N2-C7
3	AAA	1202	CLR	C16-C17-C20-C22
3	AAA	1202	CLR	C16-C17-C20-C21
3	AAA	1202	CLR	C13-C17-C20-C21
2	AAA	1201	7Y5	N5-C22-N6-C23
2	AAA	1201	7Y5	C28-C22-N6-C23
3	AAA	1202	CLR	C22-C23-C24-C25
2	AAA	1201	7Y5	C3-C4-O1-C5
2	AAA	1201	7Y5	C24-C26-O5-C27
2	AAA	1201	7Y5	C25-C26-O5-C27

There are no ring outliers.

1 monomer is involved in 2 short contacts:

Mol	Chain	Res	Type	Clashes	Symm-Clashes
3	AAA	1202	CLR	2	0

The following is a two-dimensional graphical depiction of Mogul quality analysis of bond lengths, bond angles, torsion angles, and ring geometry for all instances of the Ligand of Interest. In addition, ligands with molecular weight > 250 and outliers as shown on the validation Tables will also be included. For torsion angles, if less than 5% of the Mogul distribution of torsion angles is within 10 degrees of the torsion angle in question, then that torsion angle is considered an outlier. Any bond that is central to one or more torsion angles identified as an outlier by Mogul will be highlighted in the graph. For rings, the root-mean-square deviation (RMSD) between the ring in question and similar rings identified by Mogul is calculated over all ring torsion angles. If the average RMSD is greater than 60 degrees and the minimal RMSD between the ring in question and any Mogul-identified rings is also greater than 60 degrees, then that ring is considered an outlier. The outliers are highlighted in purple. The color gray indicates Mogul did not find sufficient equivalents in the CSD to analyse the geometry.



5.7 Other polymers [i](#)

There are no such residues in this entry.

5.8 Polymer linkage issues [i](#)

There are no chain breaks in this entry.

6 Fit of model and data [i](#)

6.1 Protein, DNA and RNA chains [i](#)

In the following table, the column labelled ‘#RSRZ> 2’ contains the number (and percentage) of RSRZ outliers, followed by percent RSRZ outliers for the chain as percentile scores relative to all X-ray entries and entries of similar resolution. The OWAB column contains the minimum, median, 95th percentile and maximum values of the occupancy-weighted average B-factor per residue. The column labelled ‘Q< 0.9’ lists the number of (and percentage) of residues with an average occupancy less than 0.9.

Mol	Chain	Analysed	<RSRZ>	#RSRZ>2	OWAB(Å ²)	Q<0.9
1	AAA	363/466 (77%)	0.37	20 (5%) 25 19	46, 86, 147, 171	0

All (20) RSRZ outliers are listed below:

Mol	Chain	Res	Type	RSRZ
1	AAA	236	VAL	7.7
1	AAA	230	PRO	5.1
1	AAA	182	PHE	5.1
1	AAA	92	LEU	4.9
1	AAA	1061	PHE	4.1
1	AAA	95	PHE	3.0
1	AAA	181	GLU	3.0
1	AAA	231	ARG	2.8
1	AAA	268	PHE	2.6
1	AAA	309	LEU	2.5
1	AAA	305	PHE	2.3
1	AAA	261	LEU	2.3
1	AAA	307	ASN	2.3
1	AAA	312	MET	2.3
1	AAA	235	ASN	2.2
1	AAA	180	SER	2.2
1	AAA	50	PHE	2.2
1	AAA	82	LEU	2.1
1	AAA	16	LEU	2.0
1	AAA	1062	ARG	2.0

6.2 Non-standard residues in protein, DNA, RNA chains [i](#)

There are no non-standard protein/DNA/RNA residues in this entry.

6.3 Carbohydrates [i](#)

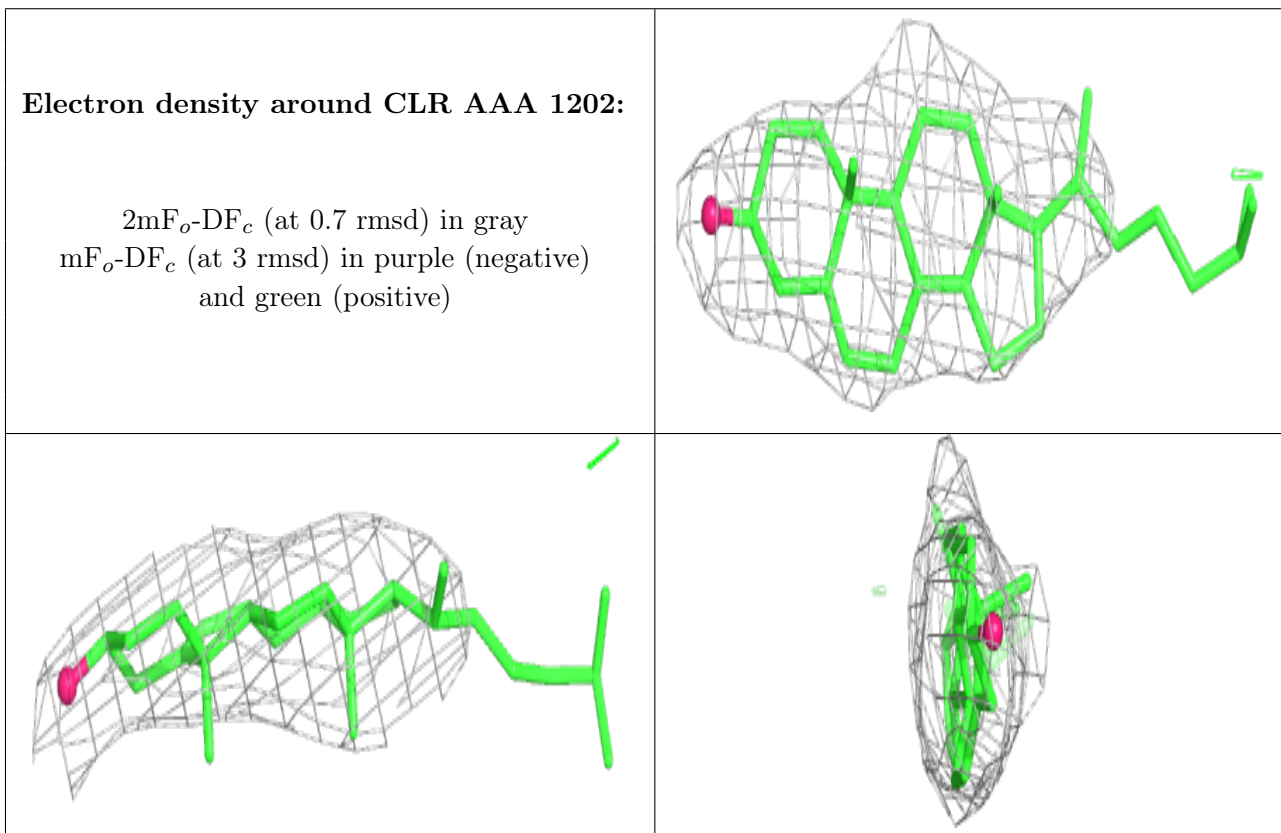
There are no monosaccharides in this entry.

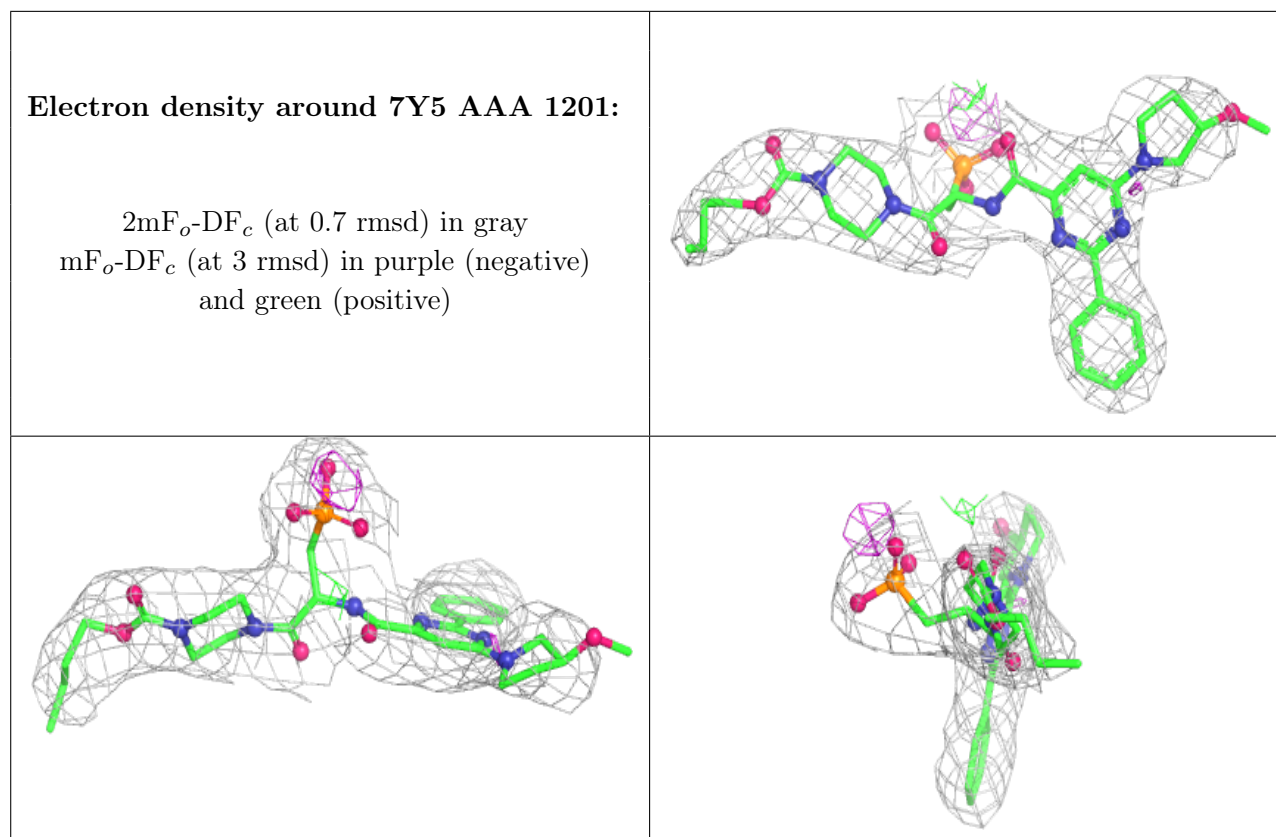
6.4 Ligands [i](#)

In the following table, the Atoms column lists the number of modelled atoms in the group and the number defined in the chemical component dictionary. The B-factors column lists the minimum, median, 95th percentile and maximum values of B factors of atoms in the group. The column labelled 'Q< 0.9' lists the number of atoms with occupancy less than 0.9.

Mol	Type	Chain	Res	Atoms	RSCC	RSR	B-factors(Å ²)	Q<0.9
3	CLR	AAA	1202	28/28	0.88	0.33	106,125,144,144	0
2	7Y5	AAA	1201	43/43	0.93	0.22	57,94,125,131	0

The following is a graphical depiction of the model fit to experimental electron density of all instances of the Ligand of Interest. In addition, ligands with molecular weight > 250 and outliers as shown on the geometry validation Tables will also be included. Each fit is shown from different orientation to approximate a three-dimensional view.





6.5 Other polymers [i](#)

There are no such residues in this entry.