



# Full wwPDB X-ray Structure Validation Report ⓘ

Feb 20, 2024 – 12:22 pm GMT

PDB ID : 8PPI  
Title : Human inositol 1,4,5-trisphosphate 3-kinase A (IP3K) catalytic domain in complex with beta-D-glucopyranosylmethanol 3,4,1'-trisphosphate/ATP/Mn  
Authors : Marquez-Monino, M.A.; Gonzalez, B.  
Deposited on : 2023-07-07  
Resolution : 1.65 Å(reported)

This is a Full wwPDB X-ray Structure Validation Report for a publicly released PDB entry.

We welcome your comments at [validation@mail.wwpdb.org](mailto:validation@mail.wwpdb.org)

A user guide is available at

<https://www.wwpdb.org/validation/2017/XrayValidationReportHelp>

with specific help available everywhere you see the ⓘ symbol.

The types of validation reports are described at

<http://www.wwpdb.org/validation/2017/FAQs#types>.

---

The following versions of software and data (see [references ⓘ](#)) were used in the production of this report:

MolProbity : 4.02b-467  
Mogul : 1.8.4, CSD as541be (2020)  
Xtriage (Phenix) : 1.13  
EDS : 2.36  
buster-report : 1.1.7 (2018)  
Percentile statistics : 20191225.v01 (using entries in the PDB archive December 25th 2019)  
Refmac : 5.8.0158  
CCP4 : 7.0.044 (Gargrove)  
Ideal geometry (proteins) : Engh & Huber (2001)  
Ideal geometry (DNA, RNA) : Parkinson et al. (1996)  
Validation Pipeline (wwPDB-VP) : 2.36

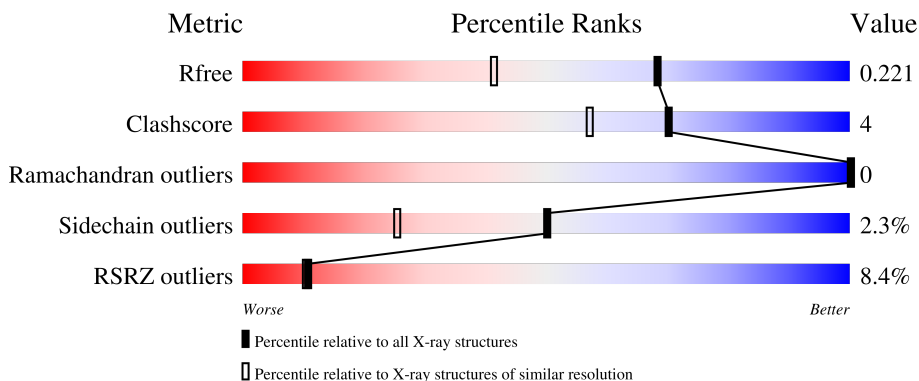
# 1 Overall quality at a glance

The following experimental techniques were used to determine the structure:

*X-RAY DIFFRACTION*

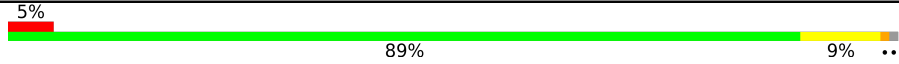
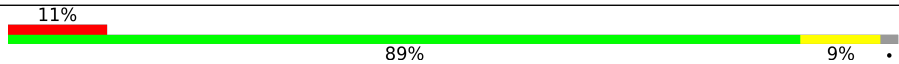
The reported resolution of this entry is 1.65 Å.

Percentile scores (ranging between 0-100) for global validation metrics of the entry are shown in the following graphic. The table shows the number of entries on which the scores are based.



Metric	Whole archive (#Entries)	Similar resolution (#Entries, resolution range(Å))
$R_{free}$	130704	1827 (1.66-1.66)
Clashscore	141614	1931 (1.66-1.66)
Ramachandran outliers	138981	1891 (1.66-1.66)
Sidechain outliers	138945	1891 (1.66-1.66)
RSRZ outliers	127900	1791 (1.66-1.66)

The table below summarises the geometric issues observed across the polymeric chains and their fit to the electron density. The red, orange, yellow and green segments of the lower bar indicate the fraction of residues that contain outliers for  $\geq 3$ , 2, 1 and 0 types of geometric quality criteria respectively. A grey segment represents the fraction of residues that are not modelled. The numeric value for each fraction is indicated below the corresponding segment, with a dot representing fractions  $\leq 5\%$ . The upper red bar (where present) indicates the fraction of residues that have poor fit to the electron density. The numeric value is given above the bar.

Mol	Chain	Length	Quality of chain
1	A	279	
1	B	279	

## 2 Entry composition

There are 6 unique types of molecules in this entry. The entry contains 5135 atoms, of which 0 are hydrogens and 0 are deuteriums.

In the tables below, the ZeroOcc column contains the number of atoms modelled with zero occupancy, the AltConf column contains the number of residues with at least one atom in alternate conformation and the Trace column contains the number of residues modelled with at most 2 atoms.

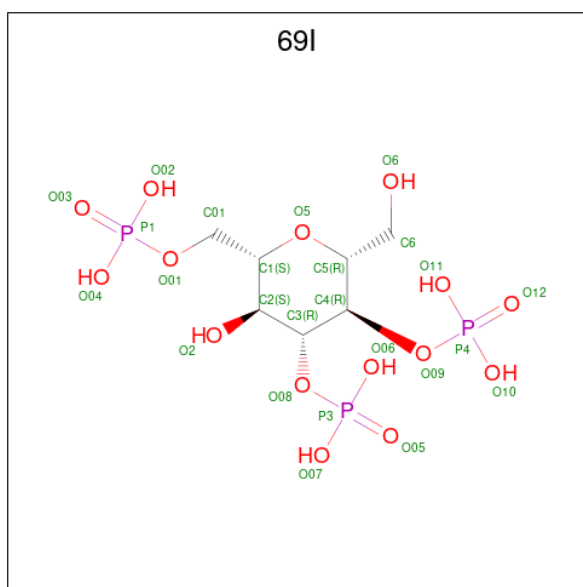
- Molecule 1 is a protein called Inositol-trisphosphate 3-kinase A.

Mol	Chain	Residues	Atoms					ZeroOcc	AltConf	Trace
			Total	C	N	O	S			
1	A	275	2230	1394	408	415	13	0	2	0
1	B	273	2228	1390	407	417	14	0	4	0

There are 10 discrepancies between the modelled and reference sequences:

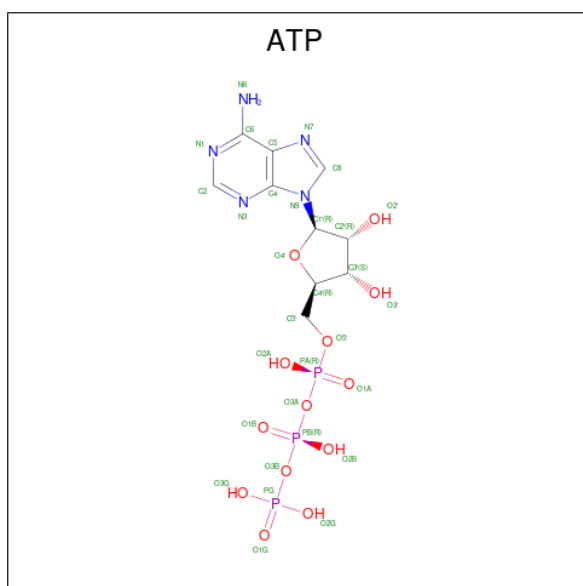
Chain	Residue	Modelled	Actual	Comment	Reference
A	183	GLY	-	expression tag	UNP P23677
A	184	SER	-	expression tag	UNP P23677
A	185	HIS	-	expression tag	UNP P23677
A	186	MET	-	expression tag	UNP P23677
A	187	SER	-	expression tag	UNP P23677
B	183	GLY	-	expression tag	UNP P23677
B	184	SER	-	expression tag	UNP P23677
B	185	HIS	-	expression tag	UNP P23677
B	186	MET	-	expression tag	UNP P23677
B	187	SER	-	expression tag	UNP P23677

- Molecule 2 is beta-D-glucopyranosylmethanol 3,4,1'-trisphosphate (three-letter code: 69I) (formula: C<sub>7</sub>H<sub>17</sub>O<sub>15</sub>P<sub>3</sub>) (labeled as "Ligand of Interest" by depositor).



Mol	Chain	Residues	Atoms				ZeroOcc	AltConf
			Total	C	O	P		
2	A	1	50	14	30	6	0	1
2	B	1	25	7	15	3	0	0

- Molecule 3 is ADENOSINE-5'-TRIPHOSPHATE (three-letter code: ATP) (formula:  $C_{10}H_{16}N_5O_{13}P_3$ ) (labeled as "Ligand of Interest" by depositor).



Mol	Chain	Residues	Atoms				ZeroOcc	AltConf
			Total	C	N	O		
3	A	1	31	10	5	13	3	0

*Continued on next page...*

Continued from previous page...

Mol	Chain	Residues	Atoms				ZeroOcc	AltConf	
			Total	C	N	O			P
3	B	1	62	20	10	26	6	0	1

- Molecule 4 is SULFATE ION (three-letter code: SO4) (formula: O<sub>4</sub>S).



Mol	Chain	Residues	Atoms			ZeroOcc	AltConf
			Total	O	S		
4	A	1	5	4	1	0	0
4	A	1	5	4	1	0	0
4	A	1	5	4	1	0	0
4	B	1	5	4	1	0	0
4	B	1	5	4	1	0	0
4	B	1	5	4	1	0	0
4	B	1	5	4	1	0	0

- Molecule 5 is MANGANESE (II) ION (three-letter code: MN) (formula: Mn) (labeled as "Ligand of Interest" by depositor).

Mol	Chain	Residues	Atoms		ZeroOcc	AltConf
			Total	Mn		
5	A	1	1	1	0	0

Continued on next page...

*Continued from previous page...*

Mol	Chain	Residues	Atoms		ZeroOcc	AltConf
5	B	1	Total 1	Mn 1	0	0

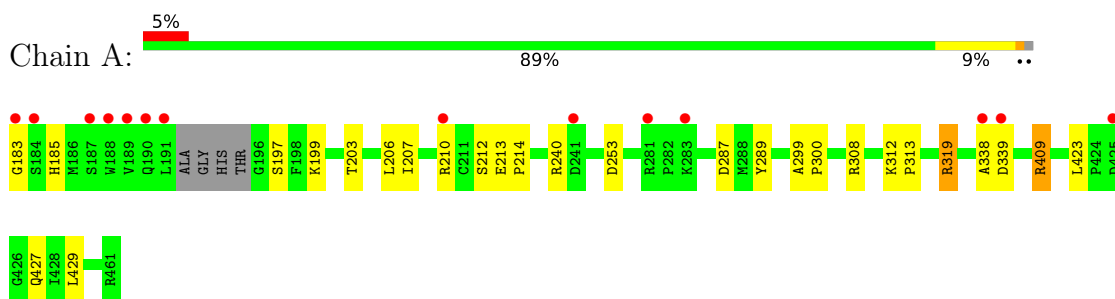
- Molecule 6 is water.

Mol	Chain	Residues	Atoms		ZeroOcc	AltConf
6	A	251	Total 251	O 251	0	0
6	B	221	Total 221	O 221	0	0

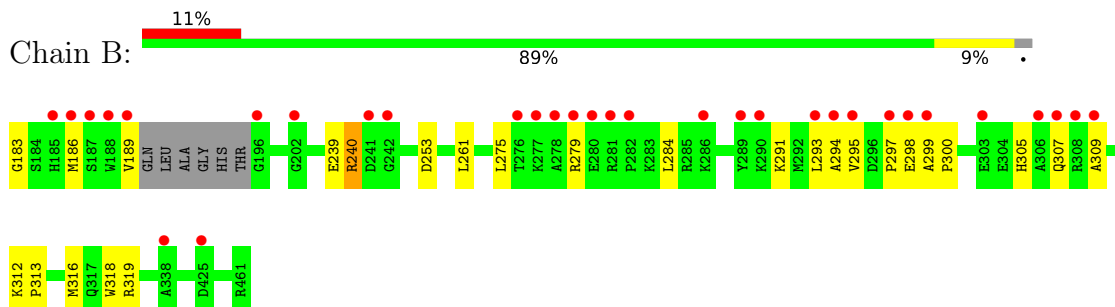
### 3 Residue-property plots [i](#)

These plots are drawn for all protein, RNA, DNA and oligosaccharide chains in the entry. The first graphic for a chain summarises the proportions of the various outlier classes displayed in the second graphic. The second graphic shows the sequence view annotated by issues in geometry and electron density. Residues are color-coded according to the number of geometric quality criteria for which they contain at least one outlier: green = 0, yellow = 1, orange = 2 and red = 3 or more. A red dot above a residue indicates a poor fit to the electron density ( $RSRZ > 2$ ). Stretches of 2 or more consecutive residues without any outlier are shown as a green connector. Residues present in the sample, but not in the model, are shown in grey.

- Molecule 1: Inositol-trisphosphate 3-kinase A



- Molecule 1: Inositol-trisphosphate 3-kinase A



## 4 Data and refinement statistics

Property	Value	Source
Space group	C 2 2 21	Depositor
Cell constants a, b, c, $\alpha$ , $\beta$ , $\gamma$	73.95Å 98.12Å 193.16Å 90.00° 90.00° 90.00°	Depositor
Resolution (Å)	96.58 – 1.65 96.58 – 1.65	Depositor EDS
% Data completeness (in resolution range)	92.0 (96.58-1.65) 91.9 (96.58-1.65)	Depositor EDS
$R_{merge}$	(Not available)	Depositor
$R_{sym}$	(Not available)	Depositor
$\langle I/\sigma(I) \rangle$ <sup>1</sup>	1.74 (at 1.65Å)	Xtrriage
Refinement program	REFMAC 5.8.0258	Depositor
R, $R_{free}$	0.185 , 0.214 0.196 , 0.221	Depositor DCC
$R_{free}$ test set	3892 reflections (5.00%)	wwPDB-VP
Wilson B-factor (Å <sup>2</sup> )	28.1	Xtrriage
Anisotropy	0.203	Xtrriage
Bulk solvent $k_{sol}$ (e/Å <sup>3</sup> ), $B_{sol}$ (Å <sup>2</sup> )	0.32 , 41.4	EDS
L-test for twinning <sup>2</sup>	$\langle  L  \rangle = 0.49$ , $\langle L^2 \rangle = 0.32$	Xtrriage
Estimated twinning fraction	No twinning to report.	Xtrriage
$F_o, F_c$ correlation	0.96	EDS
Total number of atoms	5135	wwPDB-VP
Average B, all atoms (Å <sup>2</sup> )	38.0	wwPDB-VP

Xtrriage's analysis on translational NCS is as follows: *The largest off-origin peak in the Patterson function is 4.49% of the height of the origin peak. No significant pseudotranslation is detected.*

<sup>1</sup>Intensities estimated from amplitudes.

<sup>2</sup>Theoretical values of  $\langle |L| \rangle$ ,  $\langle L^2 \rangle$  for acentric reflections are 0.5, 0.333 respectively for untwinned datasets, and 0.375, 0.2 for perfectly twinned datasets.



## 5 Model quality

### 5.1 Standard geometry

Bond lengths and bond angles in the following residue types are not validated in this section: ATP, 69I, MN, SO4

The Z score for a bond length (or angle) is the number of standard deviations the observed value is removed from the expected value. A bond length (or angle) with  $|Z| > 5$  is considered an outlier worth inspection. RMSZ is the root-mean-square of all Z scores of the bond lengths (or angles).

Mol	Chain	Bond lengths		Bond angles	
		RMSZ	# Z  >5	RMSZ	# Z  >5
1	A	0.69	0/2272	0.75	0/3053
1	B	0.68	0/2270	0.76	0/3051
All	All	0.69	0/4542	0.76	0/6104

There are no bond length outliers.

There are no bond angle outliers.

There are no chirality outliers.

There are no planarity outliers.

### 5.2 Too-close contacts

In the following table, the Non-H and H(model) columns list the number of non-hydrogen atoms and hydrogen atoms in the chain respectively. The H(added) column lists the number of hydrogen atoms added and optimized by MolProbity. The Clashes column lists the number of clashes within the asymmetric unit, whereas Symm-Clashes lists symmetry-related clashes.

Mol	Chain	Non-H	H(model)	H(added)	Clashes	Symm-Clashes
1	A	2230	0	2206	20	0
1	B	2228	0	2191	17	0
2	A	50	0	0	1	0
2	B	25	0	0	0	0
3	A	31	0	12	0	0
3	B	62	0	24	0	0
4	A	15	0	0	0	0
4	B	20	0	0	0	0
5	A	1	0	0	0	0
5	B	1	0	0	0	0
6	A	251	0	0	2	0

*Continued on next page...*

*Continued from previous page...*

Mol	Chain	Non-H	H(model)	H(added)	Clashes	Symm-Clashes
6	B	221	0	0	1	0
All	All	5135	0	4433	33	0

The all-atom clashscore is defined as the number of clashes found per 1000 atoms (including hydrogen atoms). The all-atom clashscore for this structure is 4.

All (33) close contacts within the same asymmetric unit are listed below, sorted by their clash magnitude.

Atom-1	Atom-2	Interatomic distance (Å)	Clash overlap (Å)
1:A:409[A]:ARG:HH11	1:A:409[A]:ARG:CG	1.92	0.83
1:A:423:LEU:HD11	1:A:429:LEU:HG	1.63	0.79
1:B:291:LYS:O	1:B:295:VAL:HG23	1.85	0.77
1:A:338:ALA:HB1	1:B:294:ALA:HB1	1.67	0.77
2:A:501[B]:69I:O12	2:A:501[B]:69I:O6	2.04	0.75
1:A:183:GLY:O	1:A:253:ASP:HA	1.89	0.73
1:A:409[A]:ARG:HH11	1:A:409[A]:ARG:HG3	1.57	0.69
1:B:284:LEU:HB3	1:B:309:ALA:HB1	1.86	0.58
1:B:183:GLY:O	1:B:253:ASP:HA	2.07	0.55
1:A:199:LYS:HE2	1:A:240:ARG:HG2	1.90	0.53
1:A:339:ASP:HB3	1:B:295:VAL:HA	1.90	0.52
1:A:203:THR:HB	1:A:206:LEU:HD12	1.91	0.51
1:A:409[A]:ARG:HH11	1:A:409[A]:ARG:HG2	1.75	0.51
1:A:339:ASP:HA	1:B:295:VAL:HG22	1.93	0.50
1:B:239:GLU:O	1:B:240:ARG:HD3	2.12	0.50
1:B:293:LEU:O	1:B:297:PRO:HA	2.12	0.50
1:A:409[A]:ARG:CG	1:A:409[A]:ARG:NH1	2.62	0.49
1:B:319:ARG:HD2	6:B:646:HOH:O	2.13	0.49
1:B:299:ALA:N	1:B:300:PRO:CD	2.77	0.48
1:B:275:LEU:O	1:B:279:ARG:N	2.46	0.47
1:B:312:LYS:HB3	1:B:313:PRO:HD3	1.96	0.46
1:A:339:ASP:CB	1:B:295:VAL:HG22	2.44	0.46
1:A:319:ARG:HD2	6:A:627:HOH:O	2.16	0.46
1:A:339:ASP:HB2	1:B:295:VAL:HG22	1.99	0.45
1:A:427:GLN:HG2	6:A:640:HOH:O	2.16	0.44
1:A:213:GLU:N	1:A:214:PRO:CD	2.81	0.44
1:A:185:HIS:HB3	1:A:207:ILE:HD12	2.01	0.42
1:B:261:LEU:C	1:B:261:LEU:HD23	2.39	0.42
1:B:295:VAL:HB	1:B:318:TRP:HH2	1.83	0.42
1:A:289:TYR:CE2	1:A:308:ARG:HD3	2.55	0.42
1:B:186:MET:HA	1:B:189:VAL:CG1	2.51	0.41
1:A:299:ALA:HB3	1:A:300:PRO:HD3	2.03	0.41

*Continued on next page...*

Continued from previous page...

Atom-1	Atom-2	Interatomic distance (Å)	Clash overlap (Å)
1:A:312:LYS:HB3	1:A:313:PRO:HD3	2.01	0.41

There are no symmetry-related clashes.

## 5.3 Torsion angles [i](#)

### 5.3.1 Protein backbone [i](#)

In the following table, the Percentiles column shows the percent Ramachandran outliers of the chain as a percentile score with respect to all X-ray entries followed by that with respect to entries of similar resolution.

The Analysed column shows the number of residues for which the backbone conformation was analysed, and the total number of residues.

Mol	Chain	Analysed	Favoured	Allowed	Outliers	Percentiles	
1	A	273/279 (98%)	269 (98%)	4 (2%)	0	100	100
1	B	273/279 (98%)	267 (98%)	6 (2%)	0	100	100
All	All	546/558 (98%)	536 (98%)	10 (2%)	0	100	100

There are no Ramachandran outliers to report.

### 5.3.2 Protein sidechains [i](#)

In the following table, the Percentiles column shows the percent sidechain outliers of the chain as a percentile score with respect to all X-ray entries followed by that with respect to entries of similar resolution.

The Analysed column shows the number of residues for which the sidechain conformation was analysed, and the total number of residues.

Mol	Chain	Analysed	Rotameric	Outliers	Percentiles	
1	A	239/239 (100%)	232 (97%)	7 (3%)	42	16
1	B	239/239 (100%)	234 (98%)	5 (2%)	53	29
All	All	478/478 (100%)	466 (98%)	12 (2%)	50	22

All (12) residues with a non-rotameric sidechain are listed below:

Mol	Chain	Res	Type
1	A	197	SER
1	A	210	ARG
1	A	212	SER
1	A	287	ASP
1	A	319	ARG
1	A	409[A]	ARG
1	A	409[B]	ARG
1	B	240	ARG
1	B	298	GLU
1	B	305	HIS
1	B	307	GLN
1	B	316	MET

Sometimes sidechains can be flipped to improve hydrogen bonding and reduce clashes. There are no such sidechains identified.

### 5.3.3 RNA [i](#)

There are no RNA molecules in this entry.

## 5.4 Non-standard residues in protein, DNA, RNA chains [i](#)

There are no non-standard protein/DNA/RNA residues in this entry.

## 5.5 Carbohydrates [i](#)

There are no monosaccharides in this entry.

## 5.6 Ligand geometry [i](#)

Of 15 ligands modelled in this entry, 2 are monoatomic - leaving 13 for Mogul analysis.

In the following table, the Counts columns list the number of bonds (or angles) for which Mogul statistics could be retrieved, the number of bonds (or angles) that are observed in the model and the number of bonds (or angles) that are defined in the Chemical Component Dictionary. The Link column lists molecule types, if any, to which the group is linked. The Z score for a bond length (or angle) is the number of standard deviations the observed value is removed from the expected value. A bond length (or angle) with  $|Z| > 2$  is considered an outlier worth inspection. RMSZ is the root-mean-square of all Z scores of the bond lengths (or angles).

Mol	Type	Chain	Res	Link	Bond lengths			Bond angles		
					Counts	RMSZ	# Z  > 2	Counts	RMSZ	# Z  > 2
2	69I	B	501	-	25,25,25	0.73	1 (4%)	37,39,39	0.72	0
2	69I	A	501[B]	-	25,25,25	0.71	1 (4%)	37,39,39	0.79	1 (2%)
3	ATP	A	502	5	26,33,33	0.68	0	31,52,52	0.81	1 (3%)
3	ATP	B	502[A]	5	26,33,33	0.64	0	31,52,52	0.77	1 (3%)
4	SO4	B	506	-	4,4,4	0.34	0	6,6,6	0.06	0
2	69I	A	501[A]	-	25,25,25	0.72	1 (4%)	37,39,39	0.68	0
4	SO4	A	503	-	4,4,4	0.38	0	6,6,6	0.08	0
4	SO4	A	504	-	4,4,4	0.35	0	6,6,6	0.06	0
4	SO4	A	505	-	4,4,4	0.40	0	6,6,6	0.05	0
4	SO4	B	505	-	4,4,4	0.35	0	6,6,6	0.07	0
4	SO4	B	503	-	4,4,4	0.31	0	6,6,6	0.06	0
3	ATP	B	502[B]	5	26,33,33	0.64	0	31,52,52	0.79	1 (3%)
4	SO4	B	504	-	4,4,4	0.39	0	6,6,6	0.05	0

In the following table, the Chirals column lists the number of chiral outliers, the number of chiral centers analysed, the number of these observed in the model and the number defined in the Chemical Component Dictionary. Similar counts are reported in the Torsion and Rings columns. '-' means no outliers of that kind were identified.

Mol	Type	Chain	Res	Link	Chirals	Torsions	Rings
2	69I	B	501	-	-	1/18/38/38	0/1/1/1
2	69I	A	501[B]	-	-	3/18/38/38	0/1/1/1
3	ATP	A	502	5	-	4/18/38/38	0/3/3/3
3	ATP	B	502[A]	5	-	4/18/38/38	0/3/3/3
2	69I	A	501[A]	-	-	2/18/38/38	0/1/1/1
3	ATP	B	502[B]	5	-	6/18/38/38	0/3/3/3

All (3) bond length outliers are listed below:

Mol	Chain	Res	Type	Atoms	Z	Observed(Å)	Ideal(Å)
2	A	501[A]	69I	P4-O09	2.12	1.63	1.59
2	B	501	69I	P3-O08	2.11	1.63	1.59
2	A	501[B]	69I	P4-O09	2.08	1.63	1.59

All (4) bond angle outliers are listed below:

Mol	Chain	Res	Type	Atoms	Z	Observed(°)	Ideal(°)
3	A	502	ATP	C5-C6-N6	2.44	124.06	120.35
3	B	502[B]	ATP	C5-C6-N6	2.28	123.82	120.35

*Continued on next page...*

Continued from previous page...

Mol	Chain	Res	Type	Atoms	Z	Observed(°)	Ideal(°)
3	B	502[A]	ATP	C5-C6-N6	2.27	123.81	120.35
2	A	501[B]	69I	O09-P4-O12	-2.15	101.08	109.39

There are no chirality outliers.

All (20) torsion outliers are listed below:

Mol	Chain	Res	Type	Atoms
3	A	502	ATP	PB-O3B-PG-O2G
2	A	501[B]	69I	C4-C5-C6-O6
3	B	502[A]	ATP	PB-O3B-PG-O1G
2	A	501[B]	69I	O5-C5-C6-O6
3	B	502[B]	ATP	PB-O3B-PG-O1G
3	B	502[A]	ATP	PG-O3B-PB-O1B
3	B	502[A]	ATP	PB-O3A-PA-O1A
3	B	502[B]	ATP	PB-O3A-PA-O2A
2	A	501[A]	69I	O01-C01-C1-O5
2	A	501[B]	69I	C4-O09-P4-O12
3	A	502	ATP	PB-O3B-PG-O3G
3	B	502[B]	ATP	PB-O3B-PG-O2G
3	B	502[B]	ATP	PB-O3B-PG-O3G
3	B	502[A]	ATP	PA-O3A-PB-O3B
2	A	501[A]	69I	C4-O09-P4-O11
2	B	501	69I	C4-O09-P4-O10
3	A	502	ATP	PG-O3B-PB-O2B
3	B	502[B]	ATP	PG-O3B-PB-O1B
3	B	502[B]	ATP	PB-O3A-PA-O1A
3	A	502	ATP	PB-O3B-PG-O1G

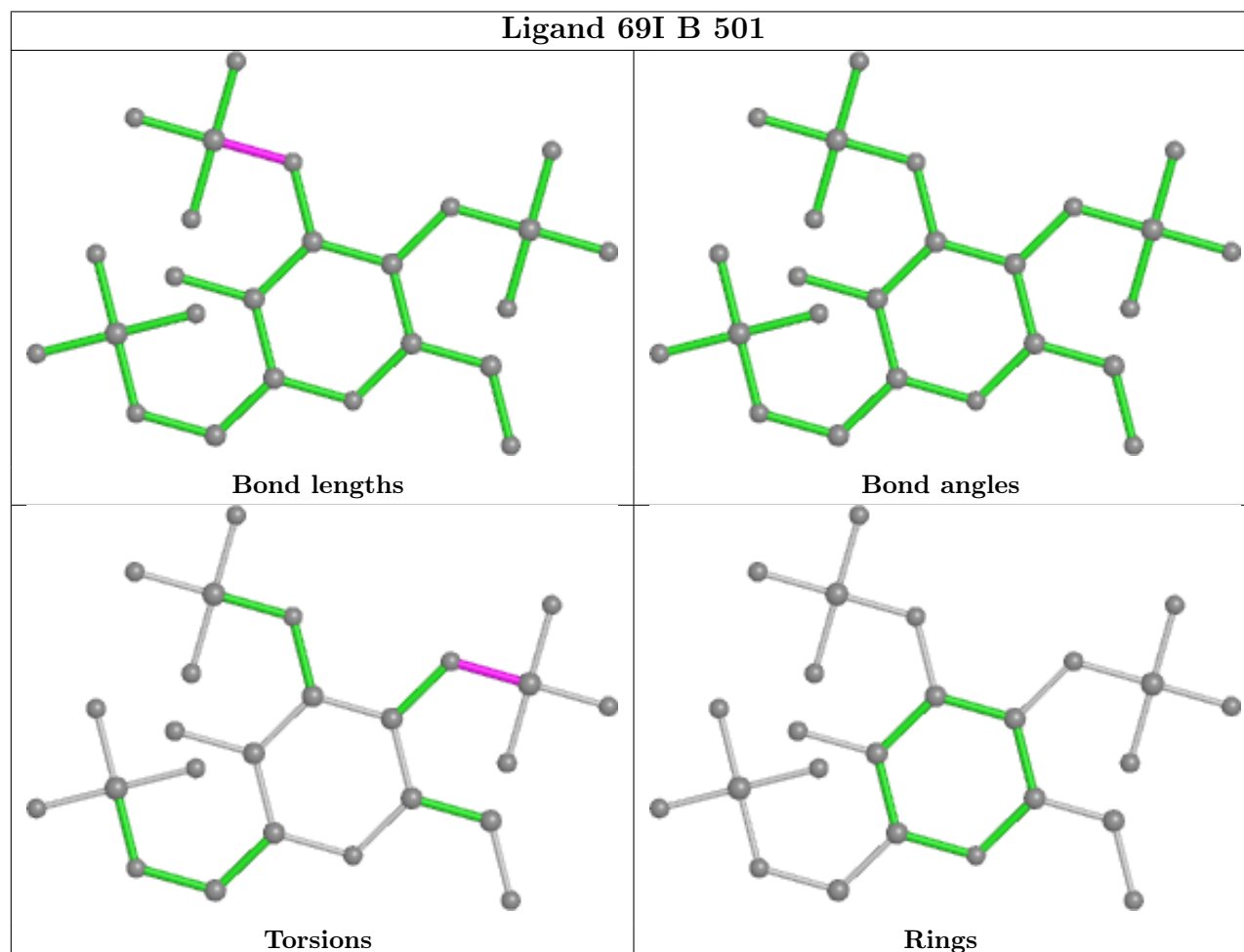
There are no ring outliers.

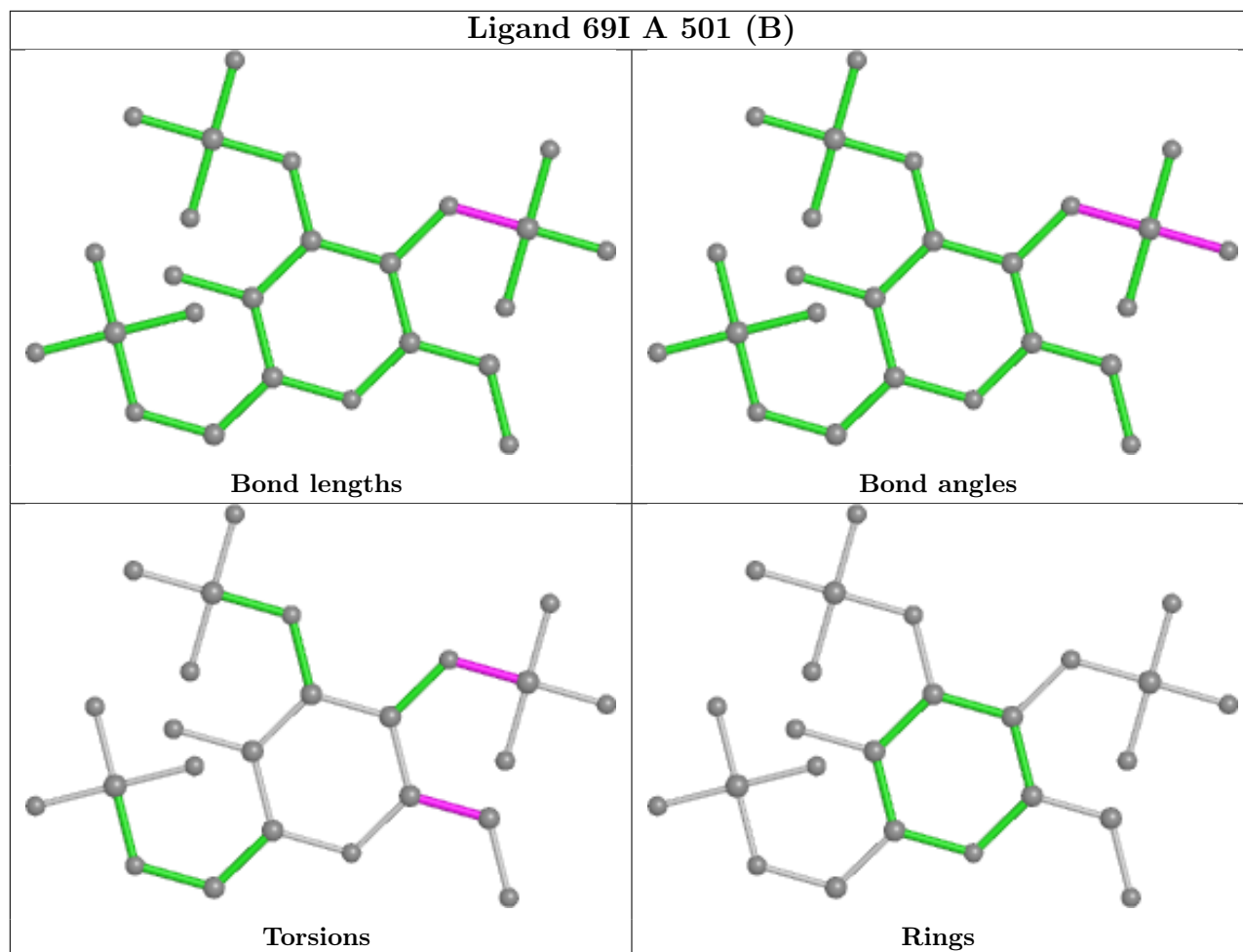
1 monomer is involved in 1 short contact:

Mol	Chain	Res	Type	Clashes	Symm-Clashes
2	A	501[B]	69I	1	0

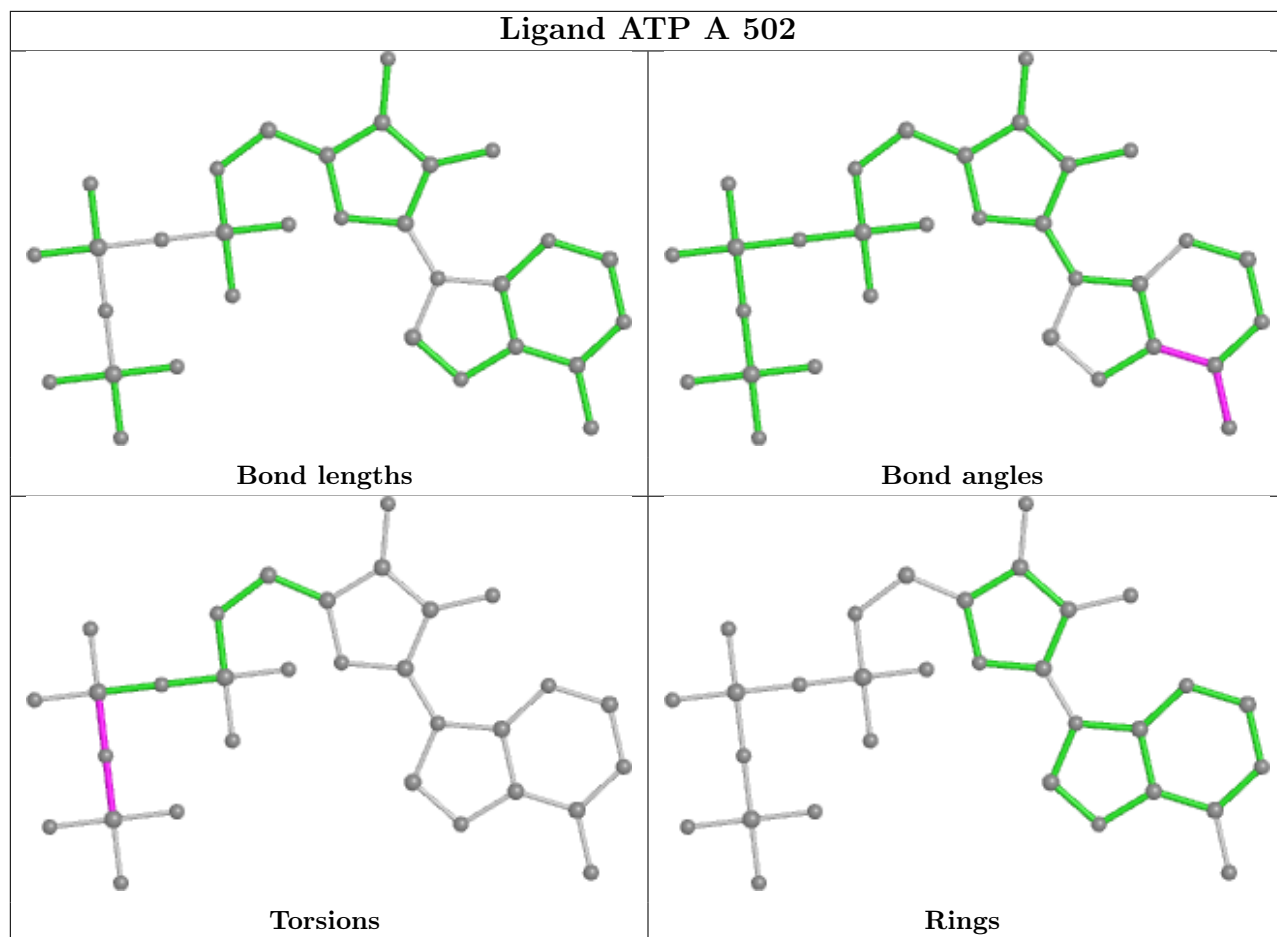
The following is a two-dimensional graphical depiction of Mogul quality analysis of bond lengths, bond angles, torsion angles, and ring geometry for all instances of the Ligand of Interest. In addition, ligands with molecular weight > 250 and outliers as shown on the validation Tables will also be included. For torsion angles, if less than 5% of the Mogul distribution of torsion angles is within 10 degrees of the torsion angle in question, then that torsion angle is considered an outlier. Any bond that is central to one or more torsion angles identified as an outlier by Mogul will be highlighted in the graph. For rings, the root-mean-square deviation (RMSD) between the ring in question and similar rings identified by Mogul is calculated over all ring torsion angles. If the

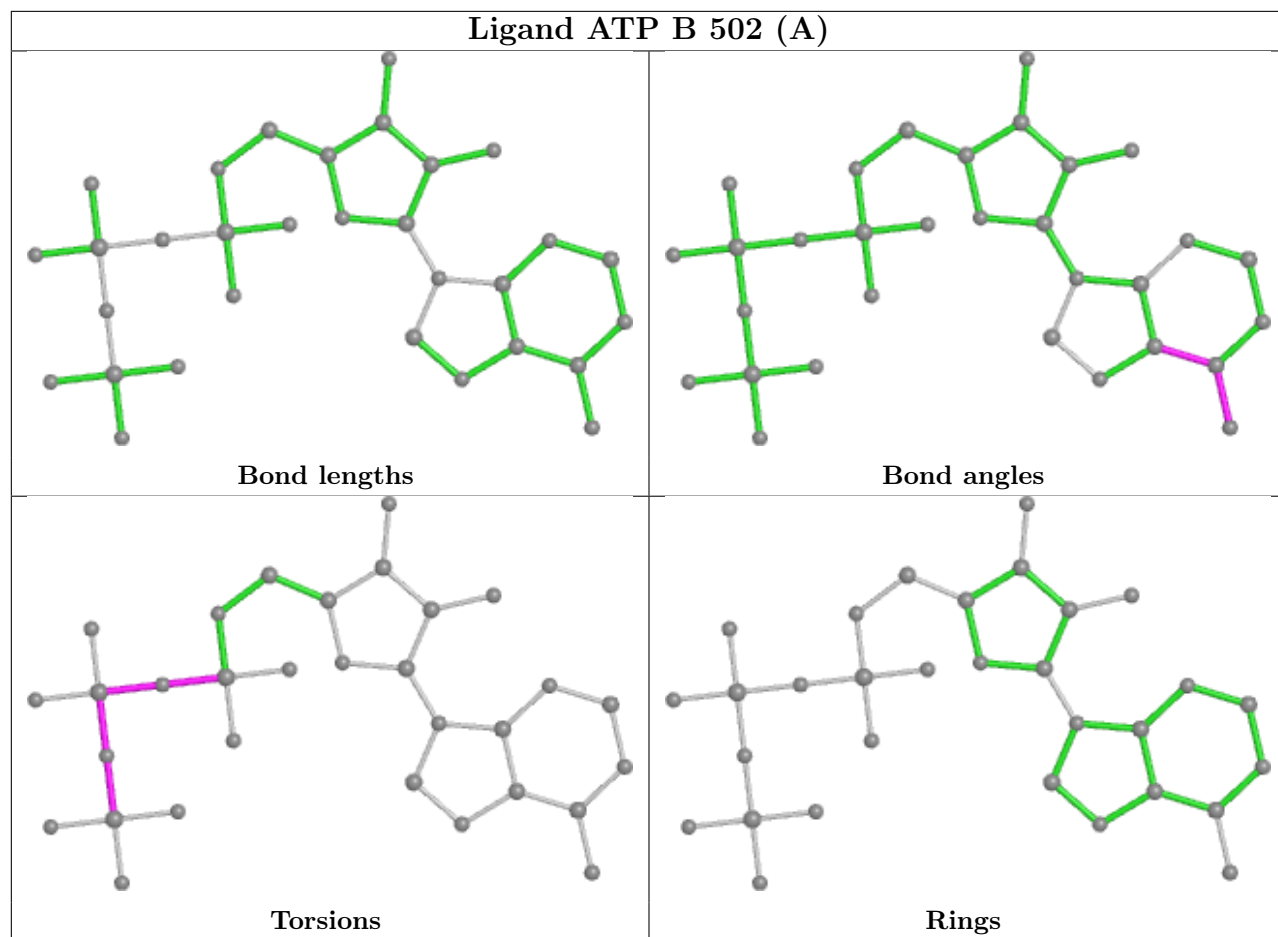
average RMSD is greater than 60 degrees and the minimal RMSD between the ring in question and any Mogul-identified rings is also greater than 60 degrees, then that ring is considered an outlier. The outliers are highlighted in purple. The color gray indicates Mogul did not find sufficient equivalents in the CSD to analyse the geometry.

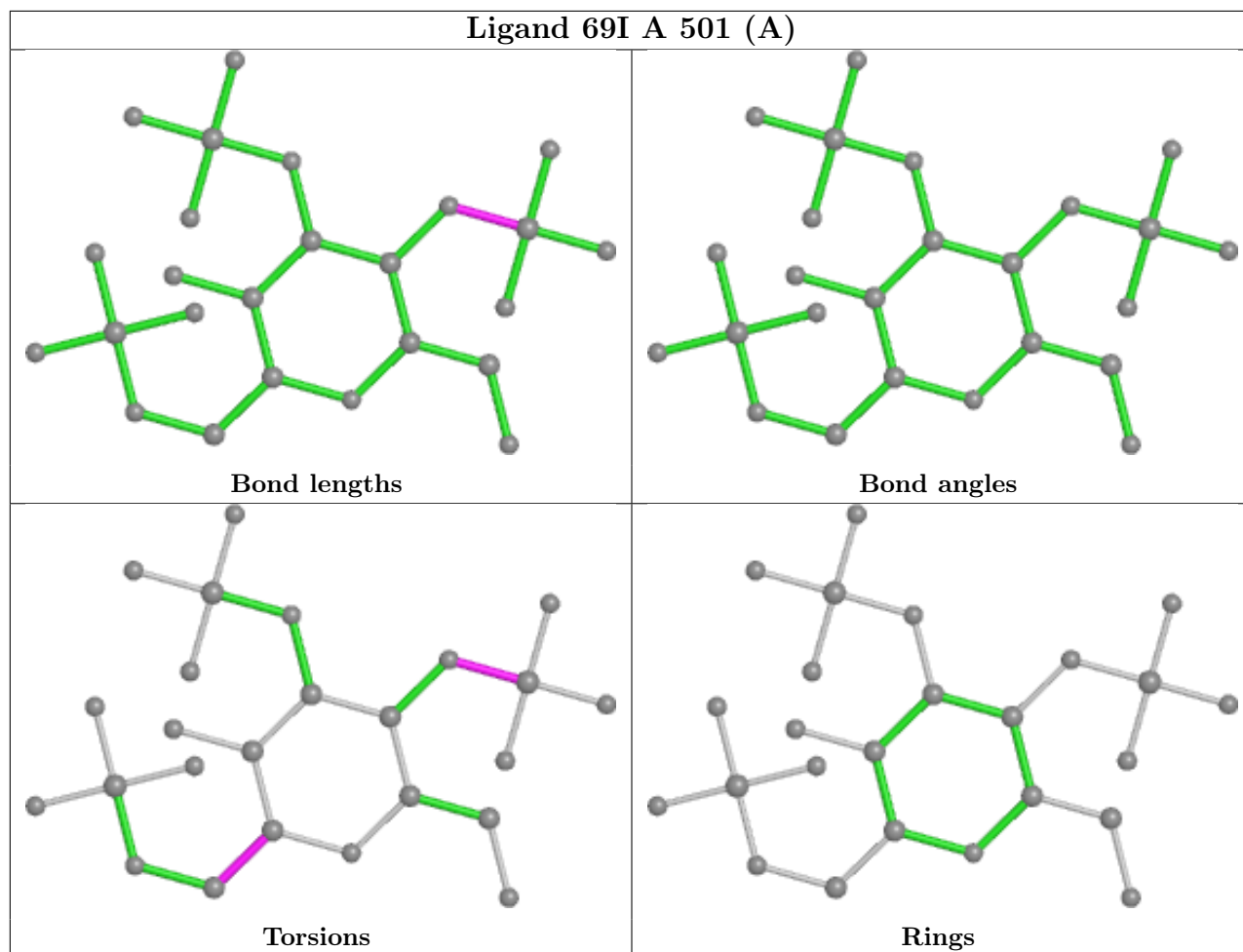


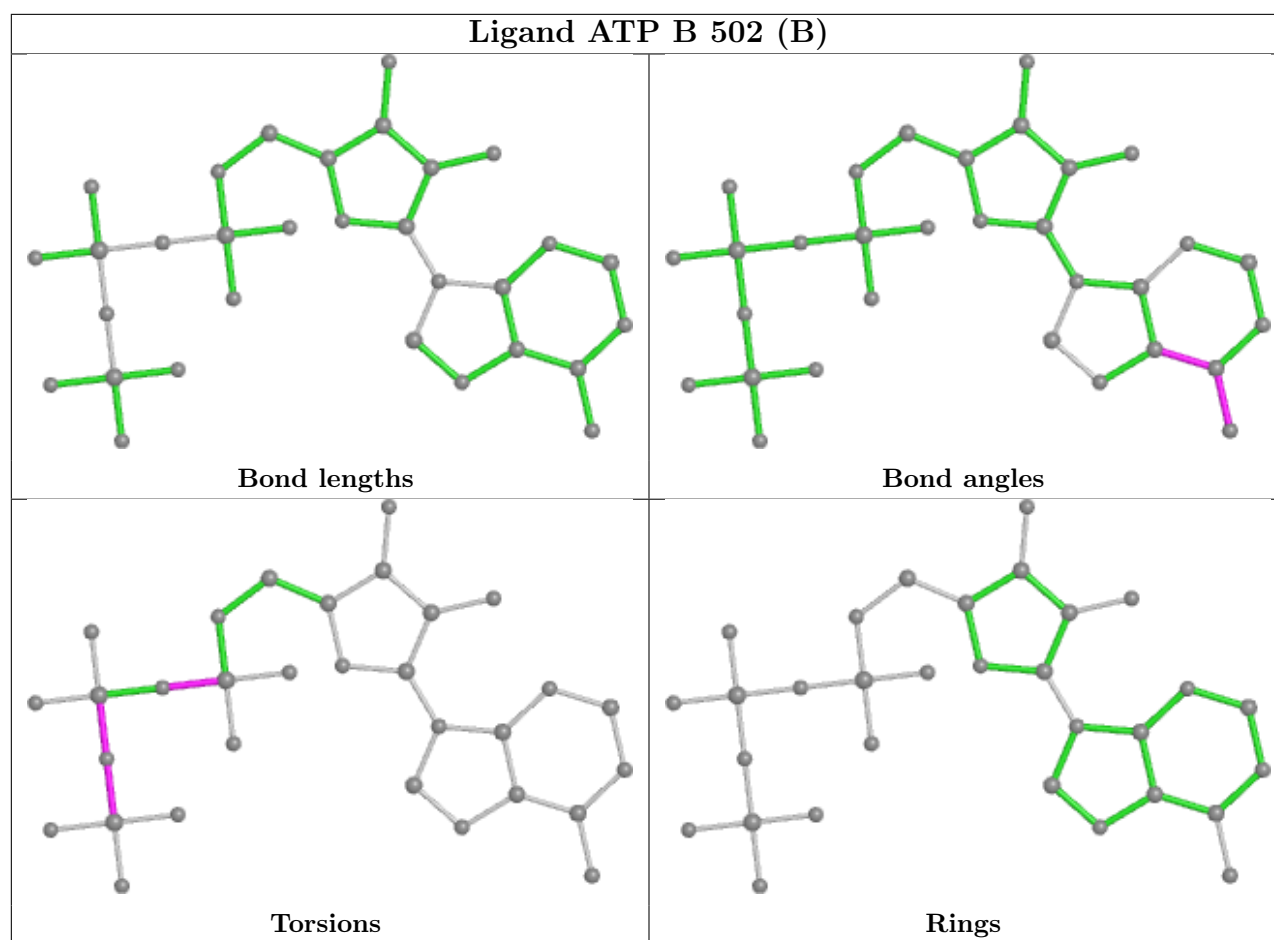












## 5.7 Other polymers [i](#)

There are no such residues in this entry.

## 5.8 Polymer linkage issues [i](#)

There are no chain breaks in this entry.

## 6 Fit of model and data

### 6.1 Protein, DNA and RNA chains

In the following table, the column labelled ‘#RSRZ > 2’ contains the number (and percentage) of RSRZ outliers, followed by percent RSRZ outliers for the chain as percentile scores relative to all X-ray entries and entries of similar resolution. The OWAB column contains the minimum, median, 95<sup>th</sup> percentile and maximum values of the occupancy-weighted average B-factor per residue. The column labelled ‘Q < 0.9’ lists the number of (and percentage) of residues with an average occupancy less than 0.9.

Mol	Chain	Analysed	<RSRZ>	#RSRZ>2	OWAB(Å <sup>2</sup> )	Q<0.9
1	A	275/279 (98%)	0.09	14 (5%) 28 27	19, 31, 62, 90	0
1	B	273/279 (97%)	0.42	32 (11%) 4 3	19, 32, 85, 114	0
All	All	548/558 (98%)	0.25	46 (8%) 11 10	19, 31, 79, 114	0

All (46) RSRZ outliers are listed below:

Mol	Chain	Res	Type	RSRZ
1	A	188	TRP	8.5
1	B	279	ARG	8.3
1	B	293	LEU	8.1
1	B	188	TRP	6.2
1	A	190	GLN	6.1
1	B	306	ALA	5.5
1	B	294	ALA	5.3
1	B	281	ARG	5.0
1	B	295	VAL	4.9
1	B	308	ARG	4.8
1	A	338	ALA	4.8
1	B	186	MET	4.6
1	B	290	LYS	4.3
1	B	289	TYR	4.2
1	A	191	LEU	4.1
1	B	276	THR	3.9
1	B	241	ASP	3.7
1	B	303	GLU	3.6
1	B	286	LYS	3.5
1	B	297	PRO	3.5
1	A	183	GLY	3.4
1	B	189	VAL	3.4
1	A	189	VAL	3.3
1	B	280	GLU	3.0

*Continued on next page...*

*Continued from previous page...*

Mol	Chain	Res	Type	RSRZ
1	A	187	SER	2.8
1	A	241	ASP	2.8
1	A	425	ASP	2.8
1	B	338	ALA	2.8
1	B	307	GLN	2.7
1	A	339	ASP	2.6
1	B	425	ASP	2.6
1	A	281	ARG	2.6
1	B	278	ALA	2.5
1	B	299	ALA	2.5
1	B	242	GLY	2.5
1	B	309	ALA	2.4
1	B	202	GLY	2.4
1	B	196	GLY	2.3
1	B	185	HIS	2.3
1	B	298	GLU	2.2
1	A	283	LYS	2.2
1	B	282	PRO	2.2
1	A	210	ARG	2.2
1	B	277	LYS	2.2
1	B	187	SER	2.1
1	A	184	SER	2.0

## 6.2 Non-standard residues in protein, DNA, RNA chains [\(i\)](#)

There are no non-standard protein/DNA/RNA residues in this entry.

## 6.3 Carbohydrates [\(i\)](#)

There are no monosaccharides in this entry.

## 6.4 Ligands [\(i\)](#)

In the following table, the Atoms column lists the number of modelled atoms in the group and the number defined in the chemical component dictionary. The B-factors column lists the minimum, median, 95<sup>th</sup> percentile and maximum values of B factors of atoms in the group. The column labelled 'Q< 0.9' lists the number of atoms with occupancy less than 0.9.

Mol	Type	Chain	Res	Atoms	RSCC	RSR	B-factors(Å <sup>2</sup> )	Q<0.9
4	SO4	A	505	5/5	0.78	0.32	114,118,120,124	0

*Continued on next page...*

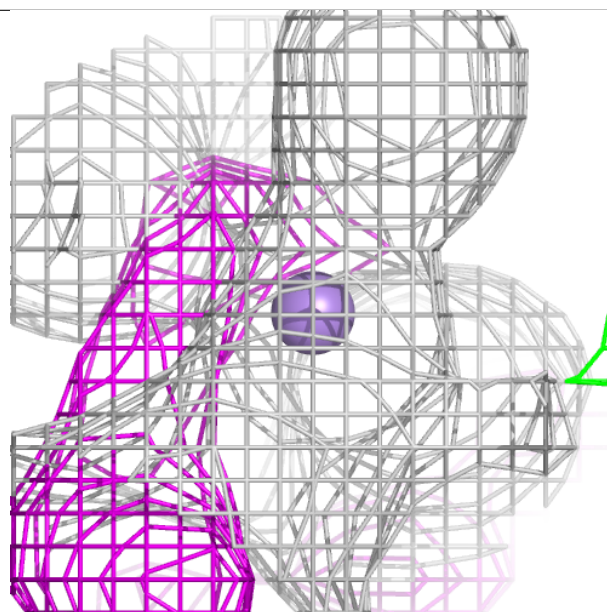
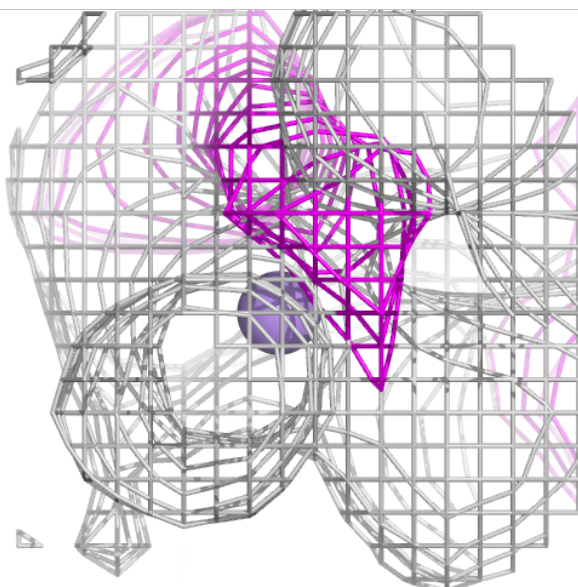
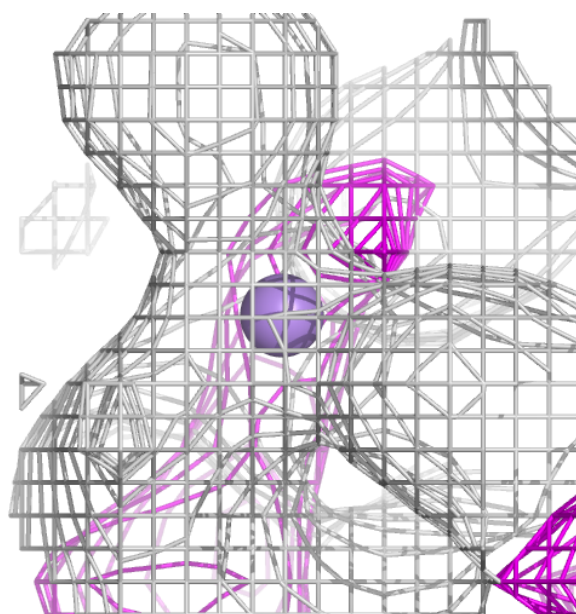
*Continued from previous page...*

Mol	Type	Chain	Res	Atoms	RSCC	RSR	B-factors(Å <sup>2</sup> )	Q<0.9
4	SO4	B	505	5/5	0.80	0.27	76,79,83,84	0
4	SO4	B	503	5/5	0.84	0.24	56,64,70,72	0
4	SO4	B	506	5/5	0.88	0.18	62,65,67,67	5
4	SO4	A	504	5/5	0.91	0.16	69,73,76,77	0
5	MN	A	506	1/1	0.92	0.27	54,54,54,54	1
2	69I	B	501	25/25	0.93	0.11	53,57,62,66	0
3	ATP	A	502	31/31	0.94	0.09	24,28,71,73	0
5	MN	B	507	1/1	0.94	0.38	62,62,62,62	1
3	ATP	B	502[A]	31/31	0.95	0.10	27,31,49,51	31
4	SO4	B	504	5/5	0.95	0.29	99,100,102,104	0
3	ATP	B	502[B]	31/31	0.95	0.10	27,30,48,48	31
4	SO4	A	503	5/5	0.96	0.12	68,70,72,76	0
2	69I	A	501[B]	25/25	0.98	0.06	35,37,40,40	25
2	69I	A	501[A]	25/25	0.98	0.06	35,37,40,41	25

The following is a graphical depiction of the model fit to experimental electron density of all instances of the Ligand of Interest. In addition, ligands with molecular weight > 250 and outliers as shown on the geometry validation Tables will also be included. Each fit is shown from different orientation to approximate a three-dimensional view.

**Electron density around MN A 506:**

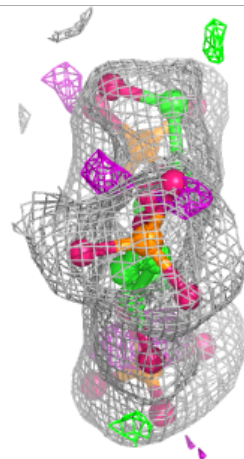
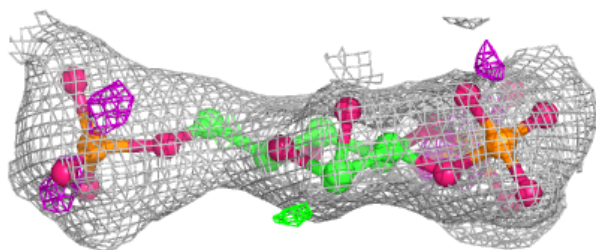
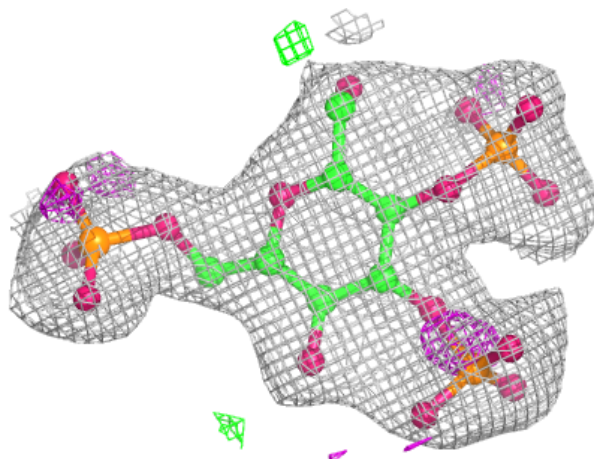
$2mF_o-DF_c$  (at 0.7 rmsd) in gray  
 $mF_o-DF_c$  (at 3 rmsd) in purple (negative)  
and green (positive)

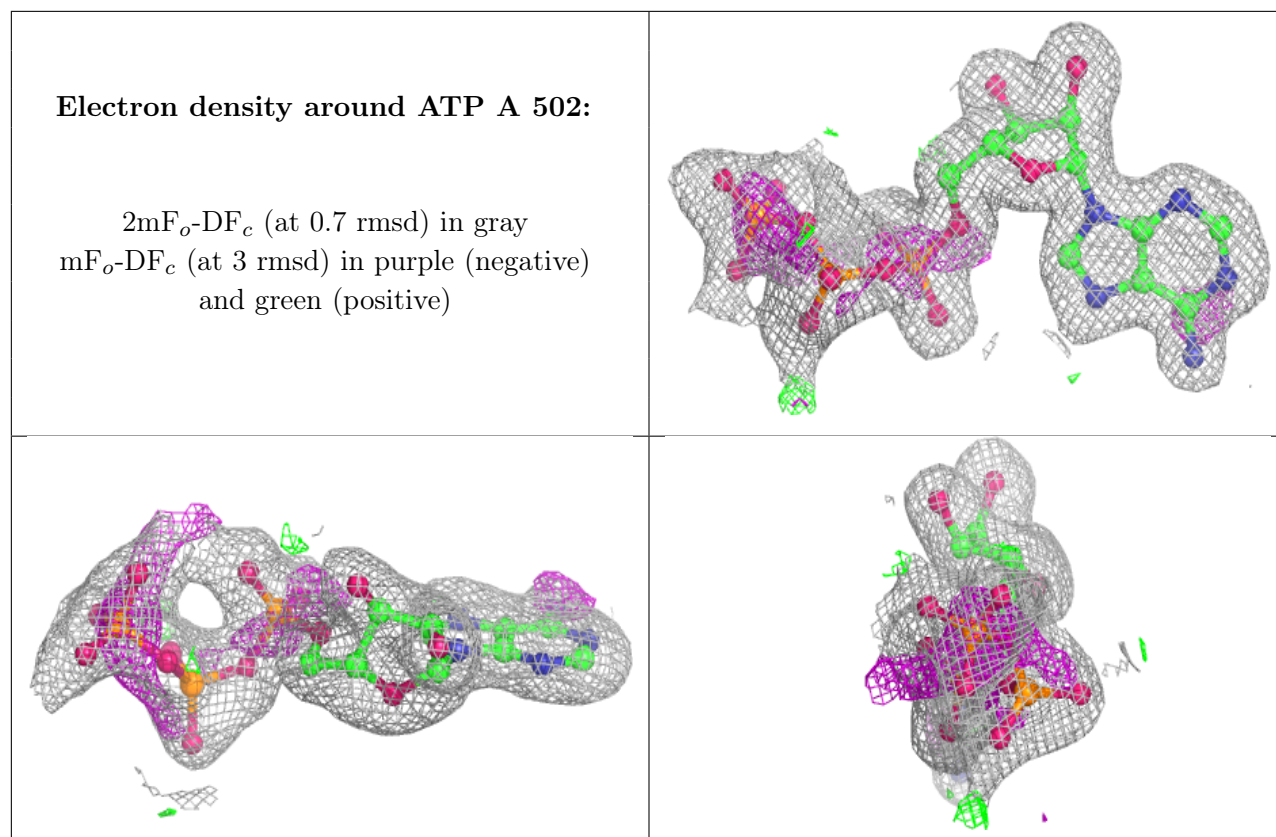




**Electron density around 69I B 501:**

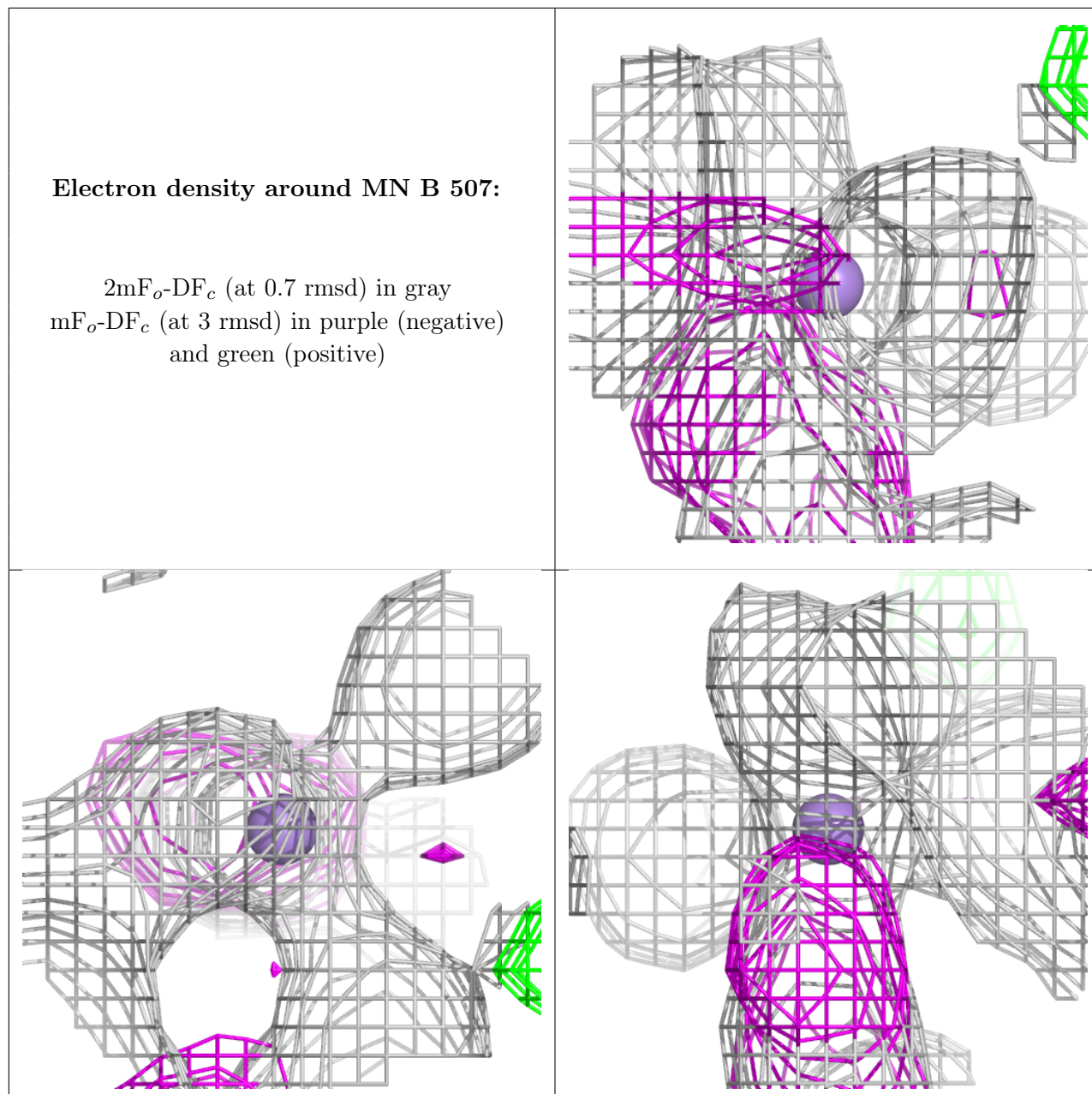
$2mF_o-DF_c$  (at 0.7 rmsd) in gray  
 $mF_o-DF_c$  (at 3 rmsd) in purple (negative)  
and green (positive)





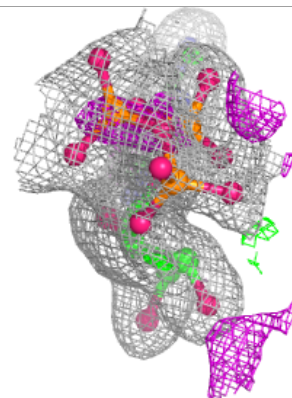
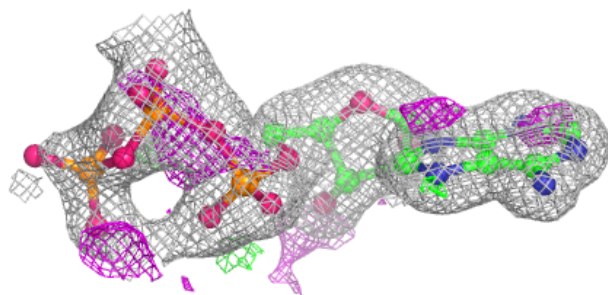
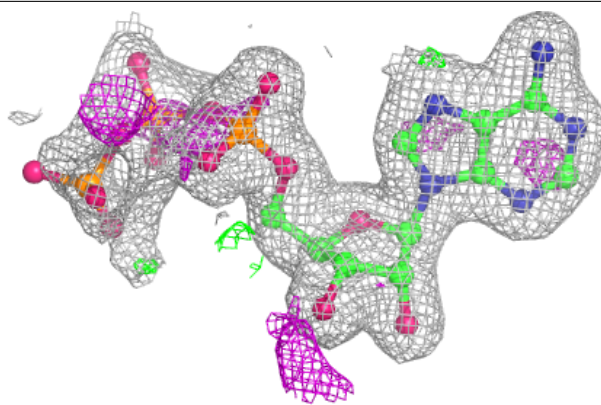
**Electron density around MN B 507:**

$2mF_o-DF_c$  (at 0.7 rmsd) in gray  
 $mF_o-DF_c$  (at 3 rmsd) in purple (negative)  
and green (positive)

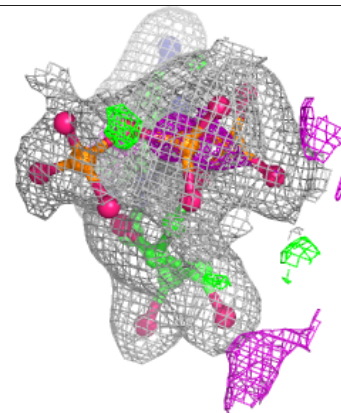
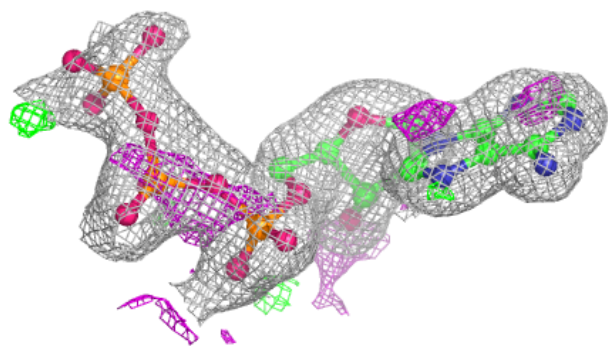
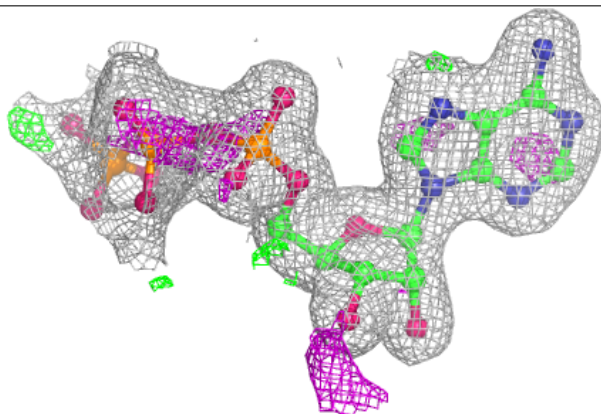


**Electron density around ATP B 502 (A):**

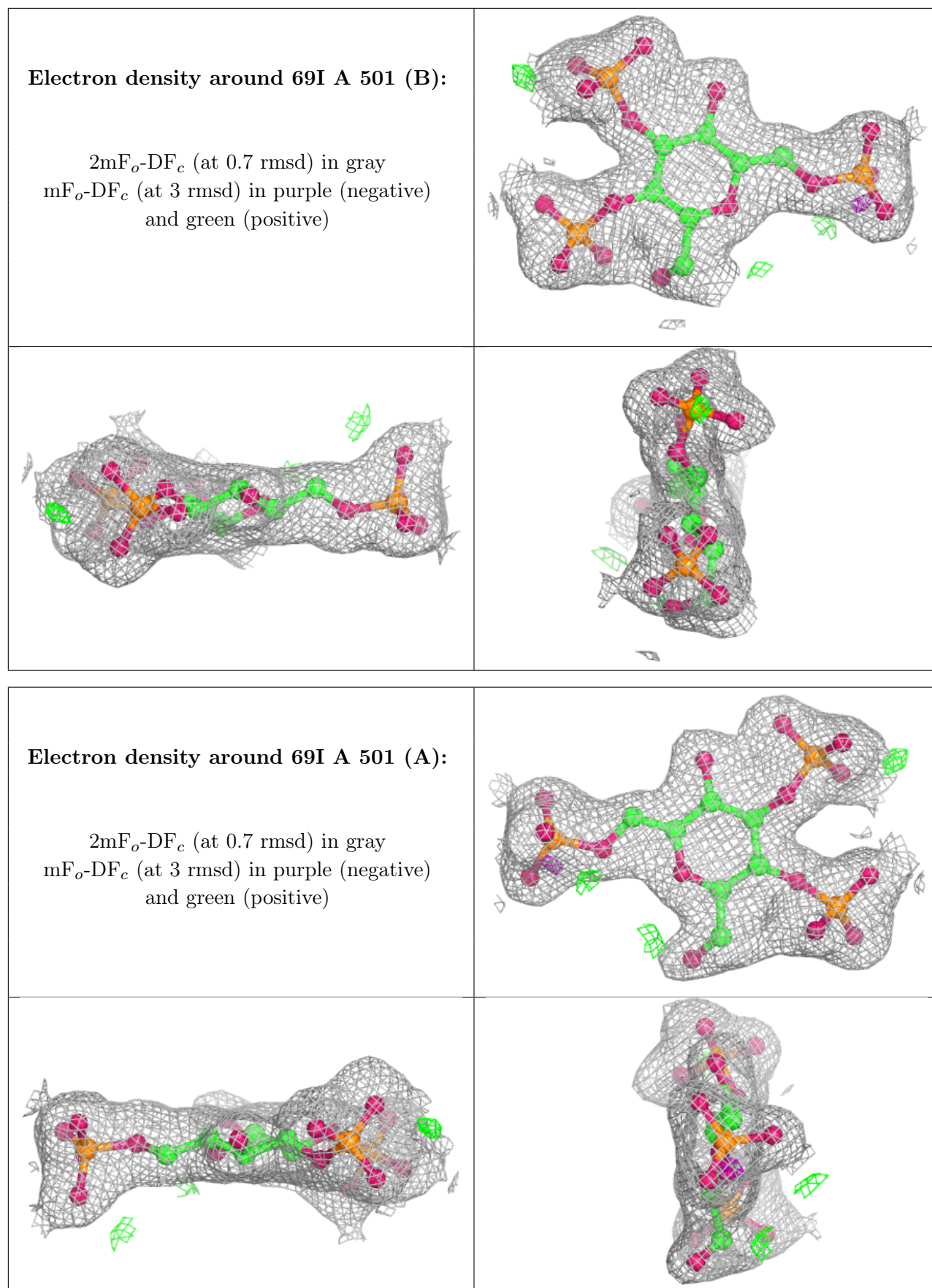
$2mF_o-DF_c$  (at 0.7 rmsd) in gray  
 $mF_o-DF_c$  (at 3 rmsd) in purple (negative)  
and green (positive)

**Electron density around ATP B 502 (B):**

$2mF_o-DF_c$  (at 0.7 rmsd) in gray  
 $mF_o-DF_c$  (at 3 rmsd) in purple (negative)  
and green (positive)







## 6.5 Other polymers [i](#)

There are no such residues in this entry.