



Full wwPDB EM Validation Report ⓘ

Apr 2, 2024 – 10:36 pm BST

PDB ID : 8PQV
EMDB ID : EMD-17825
Title : Cytoplasmic dynein-1 motor domain in post-powerstroke state
Authors : Singh, K.; Lau, C.K.; Manigrasso, G.; Gassmann, R.; Carter, A.P.
Deposited on : 2023-07-12
Resolution : 4.00 Å (reported)
Based on initial model : 7Z8G

This is a Full wwPDB EM Validation Report for a publicly released PDB entry.

We welcome your comments at validation@mail.wwpdb.org

A user guide is available at

<https://www.wwpdb.org/validation/2017/EMValidationReportHelp>

with specific help available everywhere you see the ⓘ symbol.

The types of validation reports are described at

<http://www.wwpdb.org/validation/2017/FAQs#types>.

The following versions of software and data (see [references ⓘ](#)) were used in the production of this report:

EMDB validation analysis : 0.0.1.dev92
MolProbity : 4.02b-467
Percentile statistics : 20191225.v01 (using entries in the PDB archive December 25th 2019)
MapQ : 1.9.13
Ideal geometry (proteins) : Engh & Huber (2001)
Ideal geometry (DNA, RNA) : Parkinson et al. (1996)
Validation Pipeline (wwPDB-VP) : 2.36

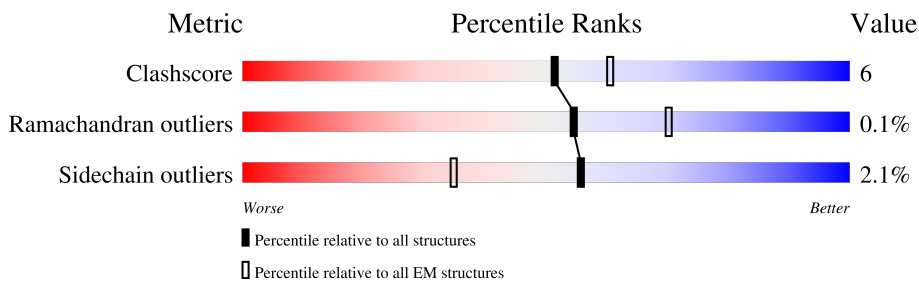
1 Overall quality at a glance

The following experimental techniques were used to determine the structure:

ELECTRON MICROSCOPY

The reported resolution of this entry is 4.00 Å.

Percentile scores (ranging between 0-100) for global validation metrics of the entry are shown in the following graphic. The table shows the number of entries on which the scores are based.



Metric	Whole archive (#Entries)	EM structures (#Entries)
Clashscore	158937	4297
Ramachandran outliers	154571	4023
Sidechain outliers	154315	3826

The table below summarises the geometric issues observed across the polymeric chains and their fit to the map. The red, orange, yellow and green segments of the bar indicate the fraction of residues that contain outliers for ≥ 3 , 2, 1 and 0 types of geometric quality criteria respectively. A grey segment represents the fraction of residues that are not modelled. The numeric value for each fraction is indicated below the corresponding segment, with a dot representing fractions $\leq 5\%$. The upper red bar (where present) indicates the fraction of residues that have poor fit to the EM map (all-atom inclusion $< 40\%$). The numeric value is given above the bar.

Mol	Chain	Length	Quality of chain
1	A	4646	

2 Entry composition

There is only 1 type of molecule in this entry. The entry contains 24122 atoms, of which 0 are hydrogens and 0 are deuteriums.

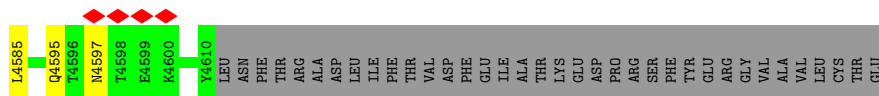
In the tables below, the AltConf column contains the number of residues with at least one atom in alternate conformation and the Trace column contains the number of residues modelled with at most 2 atoms.

- Molecule 1 is a protein called Cytoplasmic dynein 1 heavy chain 1.

Mol	Chain	Residues	Atoms					AltConf	Trace
			Total	C	N	O	S		
1	A	2996	24122	15366	4163	4472	121	0	0

There are 2 discrepancies between the modelled and reference sequences:

Chain	Residue	Modelled	Actual	Comment	Reference
A	1567	GLU	ARG	engineered mutation	UNP Q14204
A	1610	GLU	LYS	engineered mutation	UNP Q14204



4 Experimental information

Property	Value	Source
EM reconstruction method	SINGLE PARTICLE	Depositor
Imposed symmetry	POINT, Not provided	
Number of particles used	67795	Depositor
Resolution determination method	FSC 0.143 CUT-OFF	Depositor
CTF correction method	PHASE FLIPPING AND AMPLITUDE CORRECTION	Depositor
Microscope	FEI TITAN KRIOS	Depositor
Voltage (kV)	300	Depositor
Electron dose ($e^-/\text{\AA}^2$)	53	Depositor
Minimum defocus (nm)	500	Depositor
Maximum defocus (nm)	4000	Depositor
Magnification	Not provided	
Image detector	GATAN K3 BIOQUANTUM (6k x 4k)	Depositor
Maximum map value	0.055	Depositor
Minimum map value	-0.020	Depositor
Average map value	0.000	Depositor
Map value standard deviation	0.003	Depositor
Recommended contour level	0.013	Depositor
Map size (\AA)	296.52002, 296.52002, 296.52002	wwPDB
Map dimensions	280, 280, 280	wwPDB
Map angles ($^\circ$)	90.0, 90.0, 90.0	wwPDB
Pixel spacing (\AA)	1.059, 1.059, 1.059	Depositor

5 Model quality [i](#)

5.1 Standard geometry [i](#)

The Z score for a bond length (or angle) is the number of standard deviations the observed value is removed from the expected value. A bond length (or angle) with $|Z| > 5$ is considered an outlier worth inspection. RMSZ is the root-mean-square of all Z scores of the bond lengths (or angles).

Mol	Chain	Bond lengths		Bond angles	
		RMSZ	# Z >5	RMSZ	# Z >5
1	A	0.29	0/24633	0.58	12/33378 (0.0%)

There are no bond length outliers.

All (12) bond angle outliers are listed below:

Mol	Chain	Res	Type	Atoms	Z	Observed(°)	Ideal(°)
1	A	2002	LEU	CA-CB-CG	9.37	136.86	115.30
1	A	3683	ASP	CB-CG-OD2	9.34	126.71	118.30
1	A	3833	LEU	CA-CB-CG	7.26	132.00	115.30
1	A	3690	PRO	CA-N-CD	-6.97	101.75	111.50
1	A	4418	LYS	CA-CB-CG	6.58	127.89	113.40
1	A	2480	PRO	CA-N-CD	-6.11	102.94	111.50
1	A	4158	LEU	CA-CB-CG	6.07	129.26	115.30
1	A	2581	LEU	CA-CB-CG	5.92	128.91	115.30
1	A	3740	LEU	CA-CB-CG	5.89	128.85	115.30
1	A	2480	PRO	N-CD-CG	-5.84	94.44	103.20
1	A	1394	MET	CA-CB-CG	5.75	123.07	113.30
1	A	2012	MET	CA-CB-CG	5.19	122.13	113.30

There are no chirality outliers.

There are no planarity outliers.

5.2 Too-close contacts [i](#)

In the following table, the Non-H and H(model) columns list the number of non-hydrogen atoms and hydrogen atoms in the chain respectively. The H(added) column lists the number of hydrogen atoms added and optimized by MolProbity. The Clashes column lists the number of clashes within the asymmetric unit, whereas Symm-Clashes lists symmetry-related clashes.

Mol	Chain	Non-H	H(model)	H(added)	Clashes	Symm-Clashes
1	A	24122	0	24177	278	0

Continued on next page...

Continued from previous page...

Mol	Chain	Non-H	H(model)	H(added)	Clashes	Symm-Clashes
All	All	24122	0	24177	278	0

The all-atom clashscore is defined as the number of clashes found per 1000 atoms (including hydrogen atoms). The all-atom clashscore for this structure is 6.

All (278) close contacts within the same asymmetric unit are listed below, sorted by their clash magnitude.

Atom-1	Atom-2	Interatomic distance (Å)	Clash overlap (Å)
1:A:1416:LEU:O	1:A:1420:LEU:HB2	1.81	0.80
1:A:3502:THR:O	1:A:3504:ALA:N	2.22	0.73
1:A:1351:TRP:HB3	1:A:1429:LEU:HB3	1.74	0.70
1:A:3503:ILE:HG12	1:A:3503:ILE:O	1.93	0.67
1:A:2320:ASP:HB3	1:A:2358:ARG:HE	1.62	0.65
1:A:4400:ARG:NH1	1:A:4401:THR:O	2.32	0.62
1:A:1891:THR:HG22	1:A:4250:SER:HA	1.81	0.62
1:A:2488:ARG:HE	1:A:2543:GLY:HA3	1.65	0.62
1:A:2295:LEU:O	1:A:2338:ASN:ND2	2.34	0.61
1:A:4106:LEU:HD23	1:A:4135:PRO:HD2	1.83	0.60
1:A:1968:LEU:O	1:A:1972:SER:HB3	2.01	0.60
1:A:1958:ASP:OD1	1:A:1958:ASP:N	2.35	0.60
1:A:2925:ILE:HG21	1:A:2933:LEU:HB2	1.84	0.60
1:A:2374:ILE:HG21	1:A:2455:LEU:HD23	1.84	0.60
1:A:3214:GLN:HE21	1:A:3758:GLY:H	1.51	0.59
1:A:1356:PRO:HB2	1:A:1401:ILE:HG13	1.84	0.59
1:A:2930:GLN:NE2	1:A:3012:LEU:O	2.36	0.58
1:A:3633:LEU:HB3	1:A:3677:ILE:HG13	1.84	0.58
1:A:3966:PRO:HD2	1:A:4000:ARG:HG3	1.84	0.58
1:A:1698:ILE:HD13	1:A:1701:TRP:HE1	1.68	0.58
1:A:3888:ALA:HB1	1:A:4012:ASN:HD22	1.68	0.58
1:A:4190:ILE:O	1:A:4193:ARG:HB2	2.04	0.58
1:A:2759:ILE:HD12	1:A:2762:LEU:HD13	1.84	0.57
1:A:3500:MET:O	1:A:3501:SER:C	2.40	0.57
1:A:2823:ARG:NH2	1:A:2868:SER:OG	2.37	0.57
1:A:2239:LYS:HA	1:A:2242:GLU:HG2	1.86	0.56
1:A:1958:ASP:HA	1:A:2017:THR:HB	1.87	0.56
1:A:2383:ARG:NH2	1:A:2424:GLN:OE1	2.39	0.56
1:A:1412:HIS:HE2	1:A:1456:GLU:HG3	1.70	0.55
1:A:1988:PRO:O	1:A:1991:ASP:N	2.40	0.55
1:A:2186:CYS:HB2	1:A:2191:LEU:HB2	1.88	0.55
1:A:1800:GLN:OE1	1:A:1804:ARG:NH1	2.39	0.55
1:A:2993:ILE:HG22	1:A:3065:VAL:HB	1.87	0.55

Continued on next page...

Continued from previous page...

Atom-1	Atom-2	Interatomic distance (Å)	Clash overlap (Å)
1:A:3215:VAL:HG11	1:A:3479:LEU:HB2	1.87	0.55
1:A:3182:HIS:NE2	1:A:3582:ARG:O	2.40	0.55
1:A:3767:ILE:O	1:A:3771:GLU:N	2.40	0.55
1:A:2933:LEU:HB3	1:A:3065:VAL:HG22	1.88	0.54
1:A:2433:VAL:HG22	1:A:2498:ILE:HD11	1.89	0.54
1:A:2538:GLU:OE1	1:A:2551:LYS:NZ	2.40	0.54
1:A:2507:ARG:NH1	1:A:2735:TYR:OH	2.40	0.54
1:A:4326:ASN:ND2	1:A:4579:ASN:O	2.41	0.54
1:A:4037:PRO:HB2	1:A:4118:PRO:HG2	1.89	0.54
1:A:2412:MET:HA	1:A:2415:ILE:HG22	1.90	0.54
1:A:2516:GLU:OE2	1:A:2520:ARG:NH1	2.41	0.54
1:A:4191:GLN:NE2	1:A:4207:PHE:O	2.41	0.54
1:A:2516:GLU:OE1	1:A:2519:ARG:NH2	2.41	0.53
1:A:3502:THR:C	1:A:3504:ALA:H	2.10	0.53
1:A:1351:TRP:HD1	1:A:1429:LEU:HD13	1.73	0.53
1:A:1461:GLU:HA	1:A:1464:LYS:HD2	1.91	0.53
1:A:2288:ILE:HD13	1:A:2336:PRO:HG3	1.91	0.53
1:A:3502:THR:C	1:A:3504:ALA:N	2.62	0.53
1:A:1396:ILE:HD12	1:A:1439:LEU:HD12	1.91	0.53
1:A:1484:CYS:SG	1:A:1485:ARG:N	2.82	0.53
1:A:2801:ARG:NH2	1:A:3087:ASN:O	2.42	0.53
1:A:4501:ALA:O	1:A:4504:LEU:HB2	2.08	0.53
1:A:1913:THR:HG21	1:A:1958:ASP:HB3	1.90	0.52
1:A:3546:ASP:OD1	1:A:3546:ASP:N	2.40	0.52
1:A:3917:SER:HB2	1:A:3920:SER:HB3	1.92	0.52
1:A:2563:ALA:O	1:A:2804:ARG:NH2	2.38	0.52
1:A:1771:GLY:HA2	1:A:1831:ASP:HB2	1.91	0.52
1:A:1941:MET:HA	1:A:1944:ILE:HB	1.92	0.52
1:A:2749:GLY:HA2	1:A:2770:THR:HG21	1.92	0.52
1:A:1988:PRO:HA	1:A:1991:ASP:HB2	1.92	0.52
1:A:2431:GLY:O	1:A:2435:LYS:NZ	2.42	0.52
1:A:2644:THR:OG1	1:A:2647:GLY:O	2.28	0.52
1:A:3116:GLU:OE2	1:A:3140:ARG:NH1	2.42	0.52
1:A:3772:ASN:OD1	1:A:3775:ARG:NH2	2.43	0.52
1:A:3584:ASN:O	1:A:3651:ARG:NH1	2.40	0.52
1:A:2619:GLY:HA2	1:A:2662:PHE:HB3	1.92	0.52
1:A:4326:ASN:O	1:A:4329:ARG:HB3	2.10	0.52
1:A:1532:ALA:O	1:A:1598:GLN:NE2	2.37	0.51
1:A:4382:THR:O	1:A:4386:ASN:ND2	2.44	0.51
1:A:3713:LEU:HD21	1:A:3798:SER:HB3	1.92	0.51
1:A:3942:PRO:HA	1:A:3945:LYS:HG3	1.92	0.51

Continued on next page...

Continued from previous page...

Atom-1	Atom-2	Interatomic distance (Å)	Clash overlap (Å)
1:A:3999:ASP:OD1	1:A:3999:ASP:N	2.40	0.51
1:A:2269:ASP:HB2	1:A:2273:ARG:HA	1.93	0.51
1:A:3768:THR:HA	1:A:3771:GLU:HB2	1.92	0.51
1:A:1649:LYS:O	1:A:1652:LYS:NZ	2.42	0.51
1:A:1504:VAL:HG11	1:A:1524:GLU:HB2	1.92	0.51
1:A:2757:ARG:HG3	1:A:2763:ARG:HH12	1.75	0.51
1:A:3519:TYR:O	1:A:3700:ASN:ND2	2.44	0.51
1:A:1891:THR:HG21	1:A:2039:LEU:HD13	1.92	0.51
1:A:1905:PHE:HD2	1:A:2020:PRO:HG3	1.75	0.51
1:A:2112:LYS:HG2	1:A:2122:VAL:HG11	1.92	0.51
1:A:4240:TRP:NE1	1:A:4275:THR:OG1	2.44	0.50
1:A:2995:ASP:OD1	1:A:2995:ASP:N	2.40	0.50
1:A:2823:ARG:NH1	1:A:2866:ALA:O	2.42	0.50
1:A:1345:GLN:HA	1:A:1348:GLU:HG2	1.94	0.50
1:A:2354:ALA:O	1:A:2358:ARG:NH1	2.40	0.50
1:A:2851:ASP:OD2	1:A:2863:ARG:NH2	2.44	0.50
1:A:3620:ARG:HE	1:A:3644:VAL:HG21	1.76	0.50
1:A:2290:SER:HB2	1:A:2295:LEU:HD22	1.94	0.50
1:A:3474:ARG:O	1:A:3477:ALA:HB3	2.12	0.50
1:A:1946:VAL:HG22	1:A:2006:VAL:HG21	1.94	0.49
1:A:3691:ASP:OD1	1:A:3695:ARG:NH1	2.45	0.49
1:A:2453:ARG:NH2	1:A:2505:ASP:OD2	2.45	0.49
1:A:2934:LEU:HD23	1:A:3091:LEU:HD22	1.93	0.49
1:A:1399:LEU:HD13	1:A:1439:LEU:HB3	1.94	0.49
1:A:1620:GLU:OE2	1:A:2004:LYS:NZ	2.45	0.49
1:A:2893:VAL:HG11	1:A:2916:LEU:HD13	1.95	0.49
1:A:4192:GLU:OE1	1:A:4195:ARG:NH1	2.41	0.49
1:A:1664:ILE:HG22	1:A:1676:ILE:HG22	1.93	0.49
1:A:3511:ALA:HA	1:A:3514:ILE:HD12	1.94	0.49
1:A:2066:ALA:HA	1:A:2069:ILE:HG22	1.94	0.49
1:A:2694:ARG:O	1:A:2698:GLN:N	2.46	0.49
1:A:2717:ASP:HB2	1:A:2720:ARG:HG2	1.94	0.49
1:A:3756:VAL:HG12	1:A:3760:ILE:HB	1.94	0.49
1:A:3958:GLY:HA2	1:A:3961:LEU:HD12	1.93	0.49
1:A:2858:PHE:HB3	1:A:2861:ILE:HG13	1.95	0.49
1:A:3828:SER:OG	1:A:3829:LEU:N	2.46	0.49
1:A:3204:GLY:HA2	1:A:3750:LEU:HD11	1.94	0.48
1:A:3525:ARG:HH22	1:A:3576:ASN:HD21	1.60	0.48
1:A:3933:GLU:OE2	1:A:3937:ARG:NH2	2.44	0.48
1:A:4193:ARG:NH1	1:A:4321:LEU:O	2.45	0.48
1:A:3165:GLY:O	1:A:4449:ARG:NH2	2.45	0.48

Continued on next page...

Continued from previous page...

Atom-1	Atom-2	Interatomic distance (Å)	Clash overlap (Å)
1:A:3824:LEU:HA	1:A:4139:LEU:HD13	1.94	0.48
1:A:3749:LEU:HD13	1:A:3773:LEU:HD22	1.95	0.48
1:A:1721:VAL:HA	1:A:1724:VAL:HG12	1.94	0.48
1:A:2893:VAL:HG13	1:A:2911:LEU:HD13	1.95	0.48
1:A:3601:MET:SD	1:A:3611:ARG:NH2	2.86	0.48
1:A:2123:ASP:HB3	1:A:2126:GLU:HB3	1.95	0.48
1:A:2202:MET:SD	1:A:2202:MET:N	2.87	0.48
1:A:2810:LEU:HD11	1:A:2816:LEU:HD22	1.95	0.48
1:A:3839:VAL:HG21	1:A:3863:LEU:HA	1.95	0.48
1:A:2666:ILE:HD11	1:A:2710:GLY:HA3	1.96	0.48
1:A:3161:LEU:HD23	1:A:3168:THR:HG22	1.94	0.48
1:A:1462:PHE:HB2	1:A:3628:ARG:HD3	1.95	0.48
1:A:2983:SER:HB3	1:A:2990:ILE:HD12	1.96	0.48
1:A:4595:GLN:NE2	1:A:4597:ASN:OD1	2.46	0.48
1:A:2275:TRP:NE1	1:A:2277:ASP:OD1	2.45	0.48
1:A:2915:VAL:HG23	1:A:2946:LEU:HD11	1.96	0.48
1:A:4025:LEU:HD21	1:A:4027:LEU:HD13	1.97	0.47
1:A:3004:PHE:HB3	1:A:3007:ARG:HH21	1.79	0.47
1:A:2079:GLN:HB2	1:A:2160:LEU:HD11	1.97	0.47
1:A:3627:LEU:HD23	1:A:3669:ILE:HD11	1.96	0.47
1:A:1397:ASN:ND2	1:A:2902:GLU:OE1	2.46	0.47
1:A:2369:LEU:HD11	1:A:2374:ILE:HD11	1.96	0.47
1:A:3825:TYR:OH	1:A:3879:ASP:OD2	2.32	0.47
1:A:1567:GLU:HG2	1:A:1611:ILE:HD11	1.97	0.47
1:A:2569:VAL:HG11	1:A:2747:ILE:HA	1.96	0.47
1:A:2571:THR:OG1	1:A:2572:LEU:N	2.46	0.47
1:A:2784:PHE:HB2	1:A:2794:TYR:HE2	1.81	0.47
1:A:1678:SER:OG	1:A:1679:ARG:N	2.48	0.46
1:A:2519:ARG:HD3	1:A:2526:LEU:HD12	1.96	0.46
1:A:2211:TYR:HB2	1:A:2237:LEU:HD11	1.97	0.46
1:A:2237:LEU:HD23	1:A:2300:TRP:HH2	1.81	0.46
1:A:4414:GLU:HA	1:A:4417:VAL:HG12	1.97	0.46
1:A:2306:ASP:N	1:A:2306:ASP:OD1	2.47	0.46
1:A:4248:ALA:HB2	1:A:4269:LEU:HD12	1.98	0.46
1:A:2258:ALA:HA	1:A:2678:ARG:HG3	1.98	0.46
1:A:2770:THR:O	1:A:2774:VAL:N	2.48	0.46
1:A:1467:ARG:O	1:A:1471:ASN:HB2	2.16	0.46
1:A:3620:ARG:HH21	1:A:3644:VAL:HB	1.79	0.46
1:A:2069:ILE:HD12	1:A:2137:LEU:HD21	1.98	0.46
1:A:2694:ARG:O	1:A:2698:GLN:HA	2.15	0.46
1:A:2935:LEU:HD23	1:A:3092:ASN:HB3	1.98	0.46

Continued on next page...

Continued from previous page...

Atom-1	Atom-2	Interatomic distance (Å)	Clash overlap (Å)
1:A:3220:ARG:O	1:A:3220:ARG:NH1	2.49	0.46
1:A:1551:PHE:O	1:A:1558:LYS:NZ	2.46	0.46
1:A:2437:LEU:HD21	1:A:2451:ARG:HG3	1.98	0.46
1:A:1571:ILE:HD12	1:A:1604:LEU:HD23	1.97	0.45
1:A:2592:VAL:HA	1:A:2710:GLY:O	2.15	0.45
1:A:2822:ILE:HD11	1:A:2854:ALA:HB1	1.98	0.45
1:A:2080:LEU:HD22	1:A:2153:ASP:HB3	1.98	0.45
1:A:2964:HIS:HB3	1:A:3665:GLY:HA2	1.98	0.45
1:A:3621:LYS:HB2	1:A:3621:LYS:HE2	1.74	0.45
1:A:1504:VAL:HA	1:A:1507:MET:HB2	1.98	0.45
1:A:1831:ASP:OD1	1:A:1831:ASP:N	2.50	0.45
1:A:2207:VAL:HG22	1:A:2237:LEU:HD13	1.99	0.45
1:A:2393:GLU:HG3	1:A:2396:ARG:HD3	1.99	0.45
1:A:2927:ARG:HA	1:A:2927:ARG:HD3	1.75	0.45
1:A:2914:GLU:O	1:A:2918:HIS:ND1	2.49	0.45
1:A:1459:LEU:HD11	1:A:1507:MET:HE1	1.99	0.45
1:A:3746:GLU:HG2	1:A:3773:LEU:HD21	1.99	0.45
1:A:2389:GLU:HB2	1:A:2393:GLU:HB2	1.99	0.44
1:A:3585:ARG:NH1	1:A:3696:VAL:O	2.50	0.44
1:A:3830:GLN:HA	1:A:3833:LEU:HG	1.98	0.44
1:A:2002:LEU:HD22	1:A:2004:LYS:HE2	2.00	0.44
1:A:2993:ILE:HA	1:A:3065:VAL:O	2.17	0.44
1:A:3480:LYS:HA	1:A:3480:LYS:HD2	1.77	0.44
1:A:1481:GLN:HA	1:A:2272:THR:HA	1.99	0.44
1:A:4084:ILE:O	1:A:4088:VAL:HB	2.17	0.44
1:A:2961:ILE:HG12	1:A:2994:MET:HE3	1.99	0.44
1:A:4414:GLU:HB2	1:A:4418:LYS:NZ	2.33	0.44
1:A:2231:SER:O	1:A:2234:TRP:NE1	2.50	0.44
1:A:2622:PHE:HB3	1:A:2669:PRO:HD3	2.00	0.44
1:A:3825:TYR:CZ	1:A:3875:MET:HG3	2.52	0.44
1:A:2104:LYS:HB2	1:A:2136:ILE:HG21	2.00	0.44
1:A:2285:ARG:HA	1:A:2288:ILE:HG22	2.00	0.44
1:A:2536:ASP:OD1	1:A:2576:ARG:NH1	2.51	0.43
1:A:2694:ARG:O	1:A:2698:GLN:CA	2.66	0.43
1:A:4489:LEU:HD23	1:A:4492:ILE:HD11	2.00	0.43
1:A:1543:ARG:H	1:A:1543:ARG:HG2	1.52	0.43
1:A:1948:LEU:HD23	1:A:1953:ALA:HB3	2.00	0.43
1:A:1416:LEU:HD12	1:A:1416:LEU:HA	1.89	0.43
1:A:2964:HIS:HE1	1:A:2966:LYS:HE3	1.82	0.43
1:A:1996:PRO:HB3	1:A:2007:LYS:HD2	2.00	0.43
1:A:2307:VAL:HB	1:A:2345:VAL:HG11	1.99	0.43

Continued on next page...

Continued from previous page...

Atom-1	Atom-2	Interatomic distance (Å)	Clash overlap (Å)
1:A:3704:THR:OG1	1:A:3705:ARG:N	2.51	0.43
1:A:3817:SER:OG	1:A:4346:MET:SD	2.68	0.43
1:A:4191:GLN:O	1:A:4194:LEU:HB2	2.18	0.43
1:A:4465:SER:HB2	1:A:4469:VAL:HG21	2.00	0.43
1:A:2774:VAL:O	1:A:2777:TYR:HB3	2.19	0.43
1:A:2819:GLU:H	1:A:2819:GLU:HG2	1.66	0.43
1:A:3682:ARG:HA	1:A:3682:ARG:HD3	1.80	0.43
1:A:1447:LYS:HA	1:A:1447:LYS:HD3	1.77	0.43
1:A:1514:LYS:HA	1:A:1514:LYS:HD3	1.79	0.43
1:A:2118:ARG:NH1	1:A:2120:GLU:OE1	2.41	0.43
1:A:3044:LEU:HB3	1:A:3049:GLU:HG3	2.00	0.43
1:A:3910:ARG:HG2	1:A:4344:LEU:HD21	2.01	0.43
1:A:4406:LYS:H	1:A:4406:LYS:HG3	1.70	0.43
1:A:1792:LEU:HD23	1:A:1792:LEU:HA	1.90	0.42
1:A:3488:ARG:NH2	1:A:3746:GLU:OE2	2.52	0.42
1:A:3649:LEU:HB2	1:A:3695:ARG:HB3	1.99	0.42
1:A:4381:HIS:HB2	1:A:4438:CYS:HB3	2.01	0.42
1:A:4569:THR:HG22	1:A:4583:THR:HG21	2.01	0.42
1:A:1702:LEU:HD23	1:A:1702:LEU:HA	1.87	0.42
1:A:1979:GLN:HB3	1:A:2035:LEU:HD13	2.01	0.42
1:A:3483:SER:O	1:A:3486:ARG:HB3	2.19	0.42
1:A:1373:PHE:HB3	1:A:1377:LEU:HD21	2.01	0.42
1:A:2220:LEU:HG	1:A:2342:MET:HG3	2.00	0.42
1:A:3136:PRO:HA	1:A:3137:PRO:HD3	1.90	0.42
1:A:3776:GLU:O	1:A:3779:GLU:HB3	2.19	0.42
1:A:1627:PRO:HB2	1:A:1951:VAL:HB	2.01	0.42
1:A:1679:ARG:NH1	1:A:1680:GLU:OE2	2.52	0.42
1:A:2956:LEU:HG	1:A:2989:LYS:HB3	2.01	0.42
1:A:4483:SER:O	1:A:4487:LYS:HB3	2.19	0.42
1:A:2083:GLN:OE1	1:A:2085:HIS:NE2	2.52	0.42
1:A:3010:THR:OG1	1:A:3016:GLU:O	2.29	0.42
1:A:3749:LEU:HD11	1:A:3770:LEU:HD23	2.01	0.42
1:A:1906:GLY:O	1:A:1912:LYS:NZ	2.52	0.42
1:A:3661:LEU:HD22	1:A:3668:ASP:HB3	2.01	0.42
1:A:3933:GLU:HA	1:A:3936:VAL:HG22	2.02	0.42
1:A:4036:LYS:HA	1:A:4036:LYS:HD3	1.89	0.42
1:A:1987:ASN:N	1:A:1988:PRO:HD3	2.35	0.42
1:A:3612:THR:OG1	1:A:3613:SER:N	2.53	0.42
1:A:1628:ARG:NH2	1:A:1871:GLU:OE1	2.53	0.41
1:A:2234:TRP:NE1	1:A:2344:GLU:OE2	2.53	0.41
1:A:2278:GLY:N	1:A:2281:THR:OG1	2.53	0.41

Continued on next page...

Continued from previous page...

Atom-1	Atom-2	Interatomic distance (Å)	Clash overlap (Å)
1:A:3580:LEU:HD13	1:A:3600:ILE:HD11	2.01	0.41
1:A:1418:LYS:HA	1:A:1418:LYS:HD2	1.81	0.41
1:A:1925:ARG:HD2	1:A:1954:TRP:HE1	1.85	0.41
1:A:3020:LEU:HD12	1:A:3020:LEU:HA	1.91	0.41
1:A:1664:ILE:HD12	1:A:1666:LEU:HD21	2.01	0.41
1:A:2273:ARG:H	1:A:2273:ARG:HG2	1.67	0.41
1:A:1469:VAL:HG11	1:A:1496:LYS:HE3	2.02	0.41
1:A:2137:LEU:HD23	1:A:2165:PHE:HZ	1.86	0.41
1:A:3505:GLY:O	1:A:3508:LEU:HB3	2.20	0.41
1:A:3550:THR:O	1:A:3554:SER:OG	2.37	0.41
1:A:4082:LYS:HD2	1:A:4082:LYS:HA	1.79	0.41
1:A:3763:ASP:OD1	1:A:3763:ASP:N	2.54	0.41
1:A:2499:LEU:HD23	1:A:2499:LEU:HA	1.87	0.41
1:A:4393:GLN:H	1:A:4393:GLN:HG2	1.68	0.41
1:A:3655:ARG:NH1	1:A:3659:ARG:O	2.53	0.41
1:A:4422:LYS:HA	1:A:4422:LYS:HD3	1.96	0.41
1:A:1932:CYS:HA	1:A:1936:PHE:HD2	1.86	0.41
1:A:4097:LYS:HE2	1:A:4097:LYS:HB3	1.86	0.41
1:A:1581:LYS:HD3	1:A:1581:LYS:HA	1.81	0.41
1:A:2666:ILE:H	1:A:2666:ILE:HG12	1.68	0.41
1:A:2896:ARG:HA	1:A:2896:ARG:HD2	1.94	0.41
1:A:3600:ILE:HD13	1:A:3600:ILE:HA	1.93	0.41
1:A:3923:ARG:NH2	1:A:3924:ILE:O	2.53	0.41
1:A:4344:LEU:HA	1:A:4344:LEU:HD23	1.84	0.41
1:A:4343:MET:HE3	1:A:4343:MET:HB3	2.01	0.41
1:A:4585:LEU:HD23	1:A:4585:LEU:HA	1.93	0.41
1:A:1739:ILE:HD13	1:A:1739:ILE:HA	1.93	0.40
1:A:2623:SER:OG	1:A:3007:ARG:NH1	2.40	0.40
1:A:3123:PRO:HG2	1:A:3126:MET:HG2	2.02	0.40
1:A:3731:LEU:HD23	1:A:3734:LEU:HD12	2.02	0.40
1:A:1540:VAL:HG11	1:A:1601:LEU:HD22	2.03	0.40
1:A:4341:SER:HA	1:A:4344:LEU:HB2	2.04	0.40
1:A:1411:ARG:HH22	1:A:1414:LYS:HE3	1.85	0.40
1:A:1543:ARG:O	1:A:1547:LEU:N	2.49	0.40
1:A:1677:SER:HB2	1:A:1683:GLU:HG2	2.03	0.40
1:A:1752:LEU:HD23	1:A:1752:LEU:HA	1.92	0.40
1:A:1988:PRO:O	1:A:1989:ASN:C	2.58	0.40
1:A:3138:SER:OG	1:A:3139:HIS:N	2.52	0.40
1:A:3661:LEU:HD23	1:A:3661:LEU:HA	1.89	0.40
1:A:4027:LEU:HD23	1:A:4058:LEU:HG	2.04	0.40

There are no symmetry-related clashes.

5.3 Torsion angles [i](#)

5.3.1 Protein backbone [i](#)

In the following table, the Percentiles column shows the percent Ramachandran outliers of the chain as a percentile score with respect to all PDB entries followed by that with respect to all EM entries.

The Analysed column shows the number of residues for which the backbone conformation was analysed, and the total number of residues.

Mol	Chain	Analysed	Favoured	Allowed	Outliers	Percentiles
1	A	2984/4646 (64%)	2892 (97%)	89 (3%)	3 (0%)	51 84

All (3) Ramachandran outliers are listed below:

Mol	Chain	Res	Type
1	A	1996	PRO
1	A	3503	ILE
1	A	1421	HIS

5.3.2 Protein sidechains [i](#)

In the following table, the Percentiles column shows the percent sidechain outliers of the chain as a percentile score with respect to all PDB entries followed by that with respect to all EM entries.

The Analysed column shows the number of residues for which the sidechain conformation was analysed, and the total number of residues.

Mol	Chain	Analysed	Rotameric	Outliers	Percentiles
1	A	2666/4125 (65%)	2609 (98%)	57 (2%)	53 72

All (57) residues with a non-rotameric sidechain are listed below:

Mol	Chain	Res	Type
1	A	1394	MET
1	A	1424	TRP
1	A	1435	TRP
1	A	1496	LYS
1	A	1499	GLU
1	A	1516	PHE
1	A	1607	LEU
1	A	1634	ASP

Continued on next page...

Continued from previous page...

Mol	Chain	Res	Type
1	A	1872	TYR
1	A	1883	PRO
1	A	1925	ARG
1	A	1958	ASP
1	A	1966	ARG
1	A	1991	ASP
1	A	2003	ASN
1	A	2113	ARG
1	A	2157	LEU
1	A	2170	TYR
1	A	2220	LEU
1	A	2230	LYS
1	A	2295	LEU
1	A	2298	ARG
1	A	2466	CYS
1	A	2553	PRO
1	A	2606	PHE
1	A	2662	PHE
1	A	2682	PHE
1	A	2782	GLU
1	A	2897	LEU
1	A	2927	ARG
1	A	2943	LYS
1	A	2986	LYS
1	A	3004	PHE
1	A	3094	PHE
1	A	3096	ASP
1	A	3124	ASP
1	A	3158	ASN
1	A	3163	LYS
1	A	3198	GLN
1	A	3486	ARG
1	A	3490	GLU
1	A	3502	THR
1	A	3506	ASP
1	A	3526	GLN
1	A	3572	LEU
1	A	3743	ARG
1	A	3827	TYR
1	A	3836	TYR
1	A	3912	ASN
1	A	3923	ARG

Continued on next page...

Continued from previous page...

Mol	Chain	Res	Type
1	A	4013	LEU
1	A	4112	LYS
1	A	4171	LYS
1	A	4268	PHE
1	A	4390	LEU
1	A	4399	LYS
1	A	4419	MET

Sometimes sidechains can be flipped to improve hydrogen bonding and reduce clashes. All (3) such sidechains are listed below:

Mol	Chain	Res	Type
1	A	2964	HIS
1	A	3214	GLN
1	A	4386	ASN

5.3.3 RNA [i](#)

There are no RNA molecules in this entry.

5.4 Non-standard residues in protein, DNA, RNA chains [i](#)

There are no non-standard protein/DNA/RNA residues in this entry.

5.5 Carbohydrates [i](#)

There are no monosaccharides in this entry.

5.6 Ligand geometry [i](#)

There are no ligands in this entry.

5.7 Other polymers [i](#)

There are no such residues in this entry.

5.8 Polymer linkage issues [i](#)

There are no chain breaks in this entry.

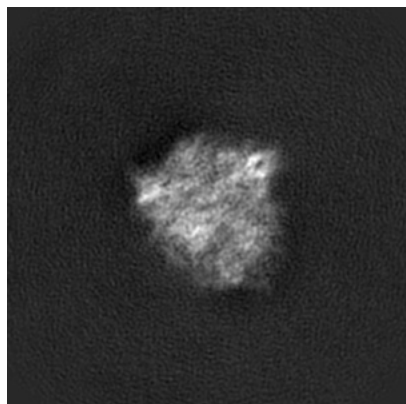
6 Map visualisation [i](#)

This section contains visualisations of the EMDB entry EMD-17825. These allow visual inspection of the internal detail of the map and identification of artifacts.

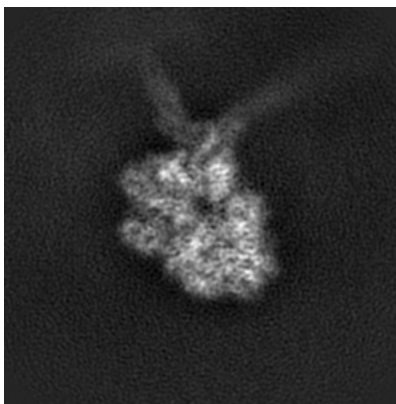
Images derived from a raw map, generated by summing the deposited half-maps, are presented below the corresponding image components of the primary map to allow further visual inspection and comparison with those of the primary map.

6.1 Orthogonal projections [i](#)

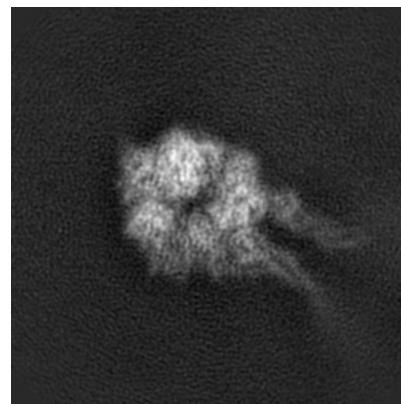
6.1.1 Primary map



X

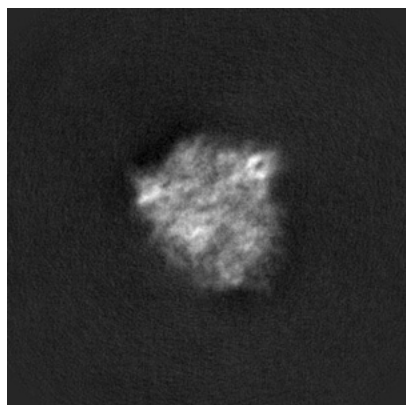


Y

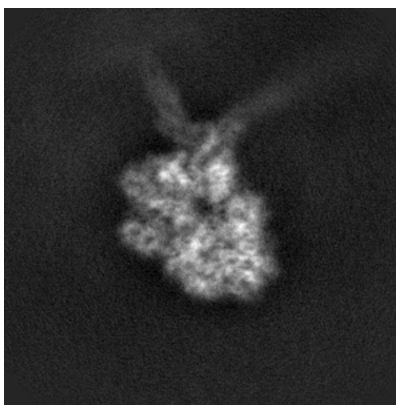


Z

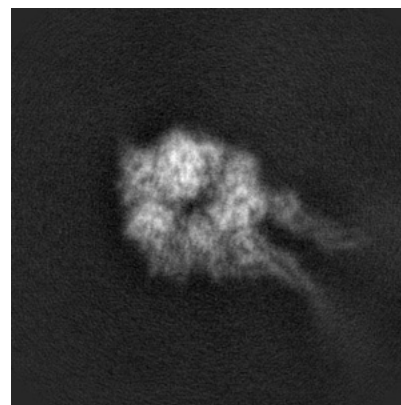
6.1.2 Raw map



X



Y



Z

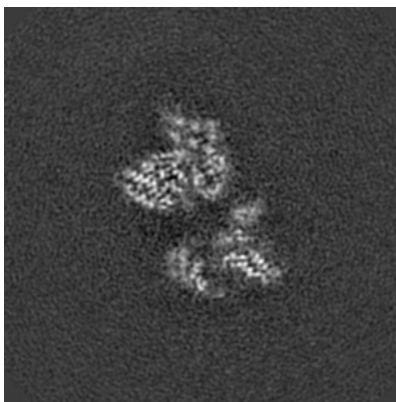
The images above show the map projected in three orthogonal directions.

6.2 Central slices [i](#)

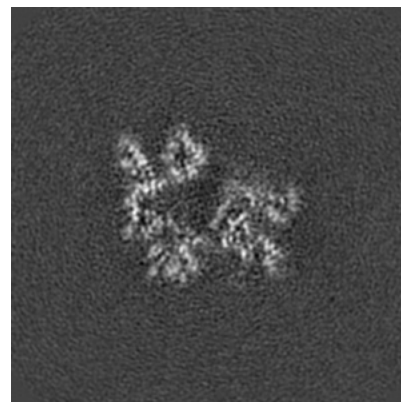
6.2.1 Primary map



X Index: 140



Y Index: 140

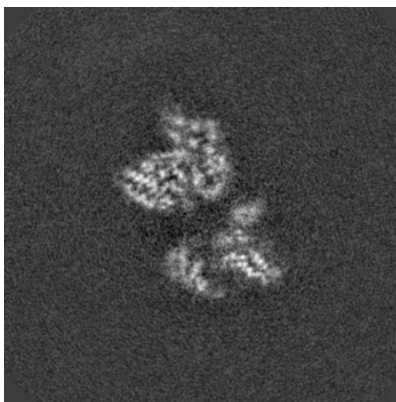


Z Index: 140

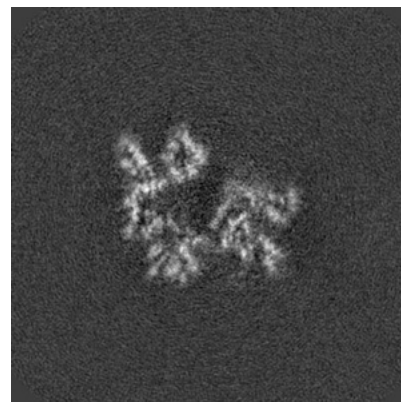
6.2.2 Raw map



X Index: 140



Y Index: 140

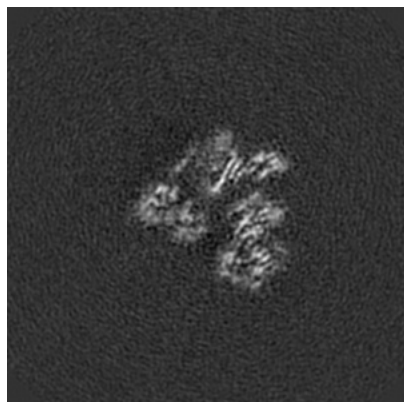


Z Index: 140

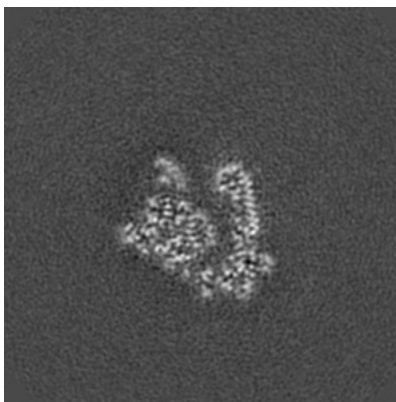
The images above show central slices of the map in three orthogonal directions.

6.3 Largest variance slices [i](#)

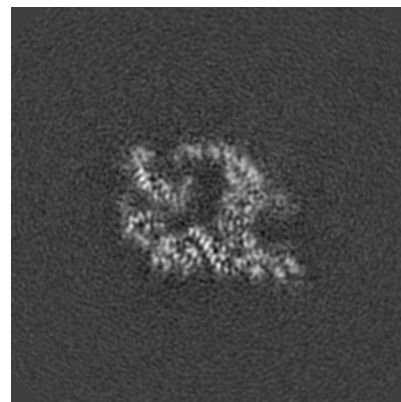
6.3.1 Primary map



X Index: 114

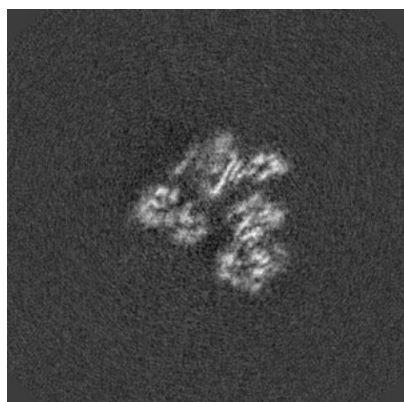


Y Index: 170

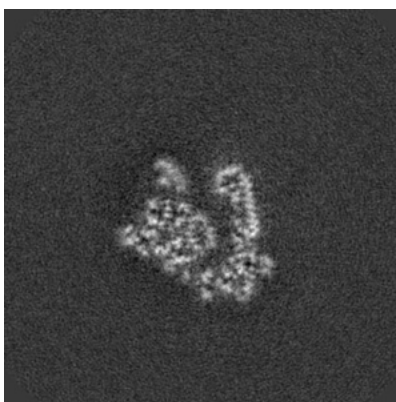


Z Index: 150

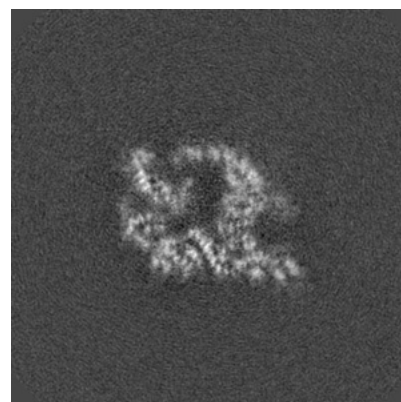
6.3.2 Raw map



X Index: 114



Y Index: 170

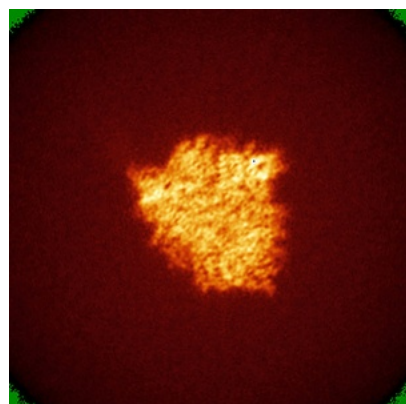


Z Index: 150

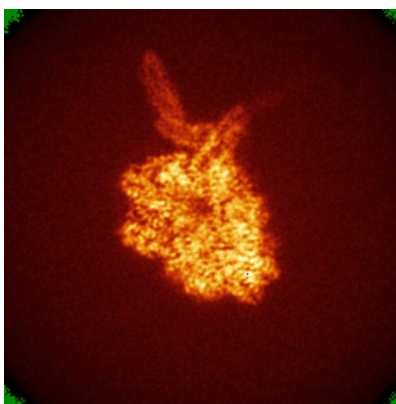
The images above show the largest variance slices of the map in three orthogonal directions.

6.4 Orthogonal standard-deviation projections (False-color) [i](#)

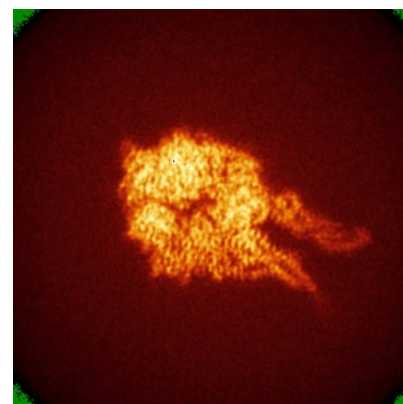
6.4.1 Primary map



X

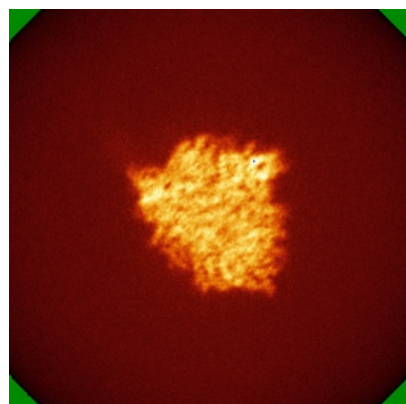


Y

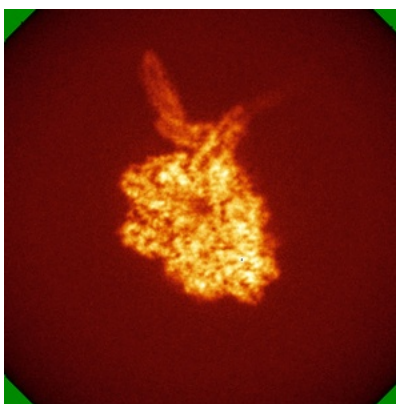


Z

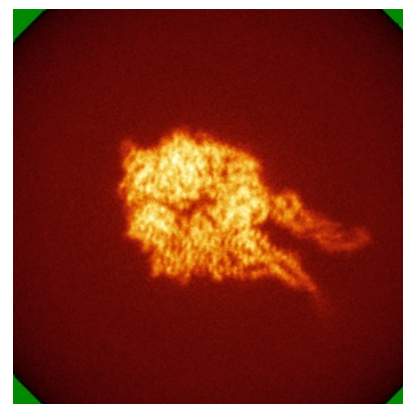
6.4.2 Raw map



X



Y



Z

The images above show the map standard deviation projections with false color in three orthogonal directions. Minimum values are shown in green, max in blue, and dark to light orange shades represent small to large values respectively.

6.5 Orthogonal surface views [i](#)

6.5.1 Primary map



The images above show the 3D surface view of the map at the recommended contour level 0.013. These images, in conjunction with the slice images, may facilitate assessment of whether an appropriate contour level has been provided.

6.5.2 Raw map



These images show the 3D surface of the raw map. The raw map's contour level was selected so that its surface encloses the same volume as the primary map does at its recommended contour level.

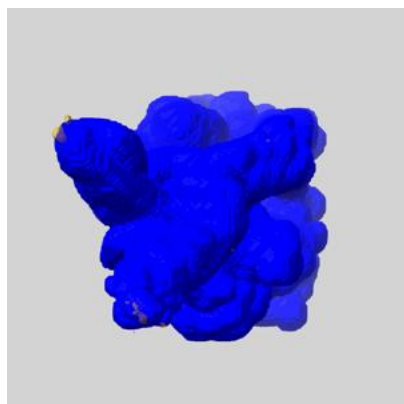
6.6 Mask visualisation [i](#)

This section shows the 3D surface view of the primary map at 50% transparency overlaid with the specified mask at 0% transparency

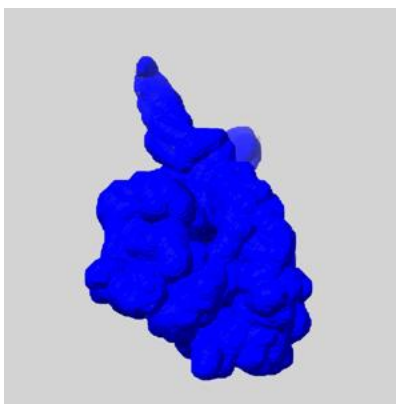
A mask typically either:

- Encompasses the whole structure
- Separates out a domain, a functional unit, a monomer or an area of interest from a larger structure

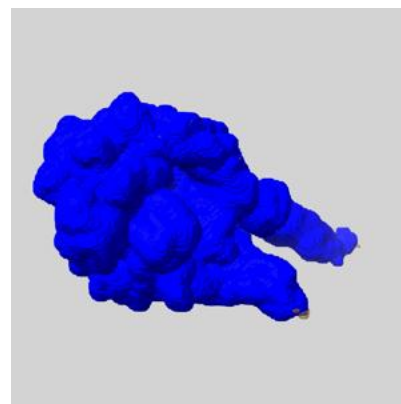
6.6.1 emd_17825_msk_1.map [i](#)



X



Y

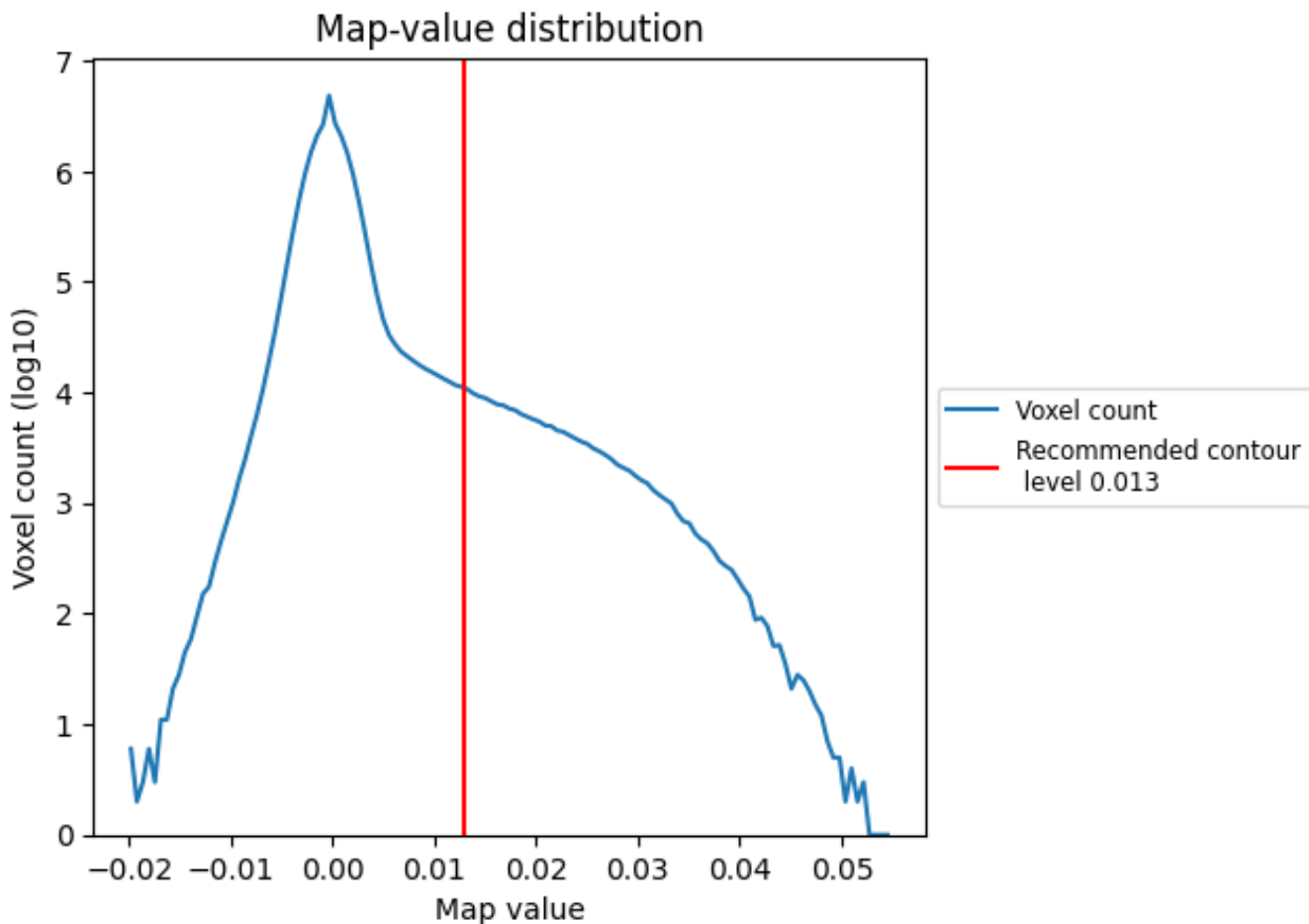


Z

7 Map analysis [i](#)

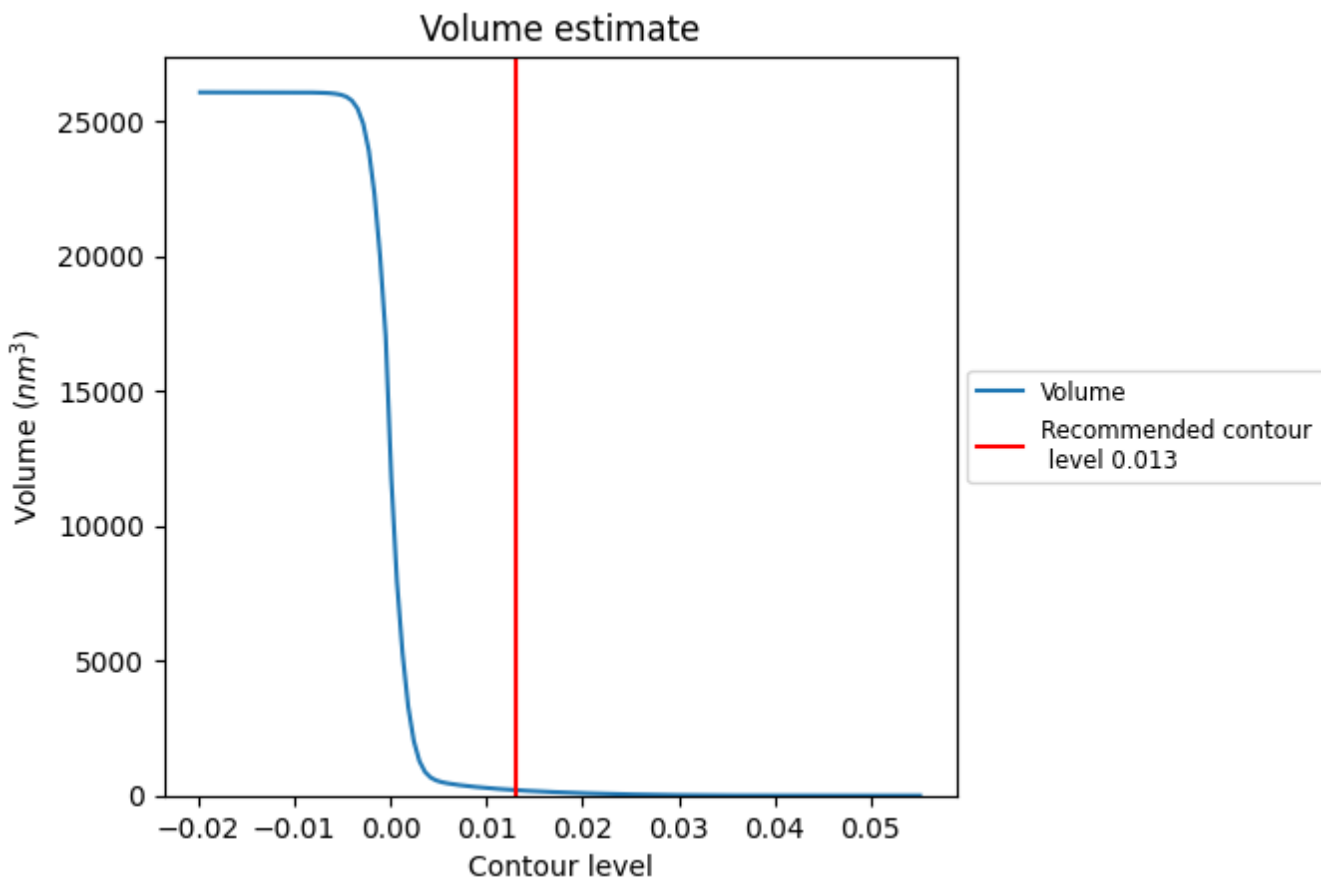
This section contains the results of statistical analysis of the map.

7.1 Map-value distribution [i](#)



The map-value distribution is plotted in 128 intervals along the x-axis. The y-axis is logarithmic. A spike in this graph at zero usually indicates that the volume has been masked.

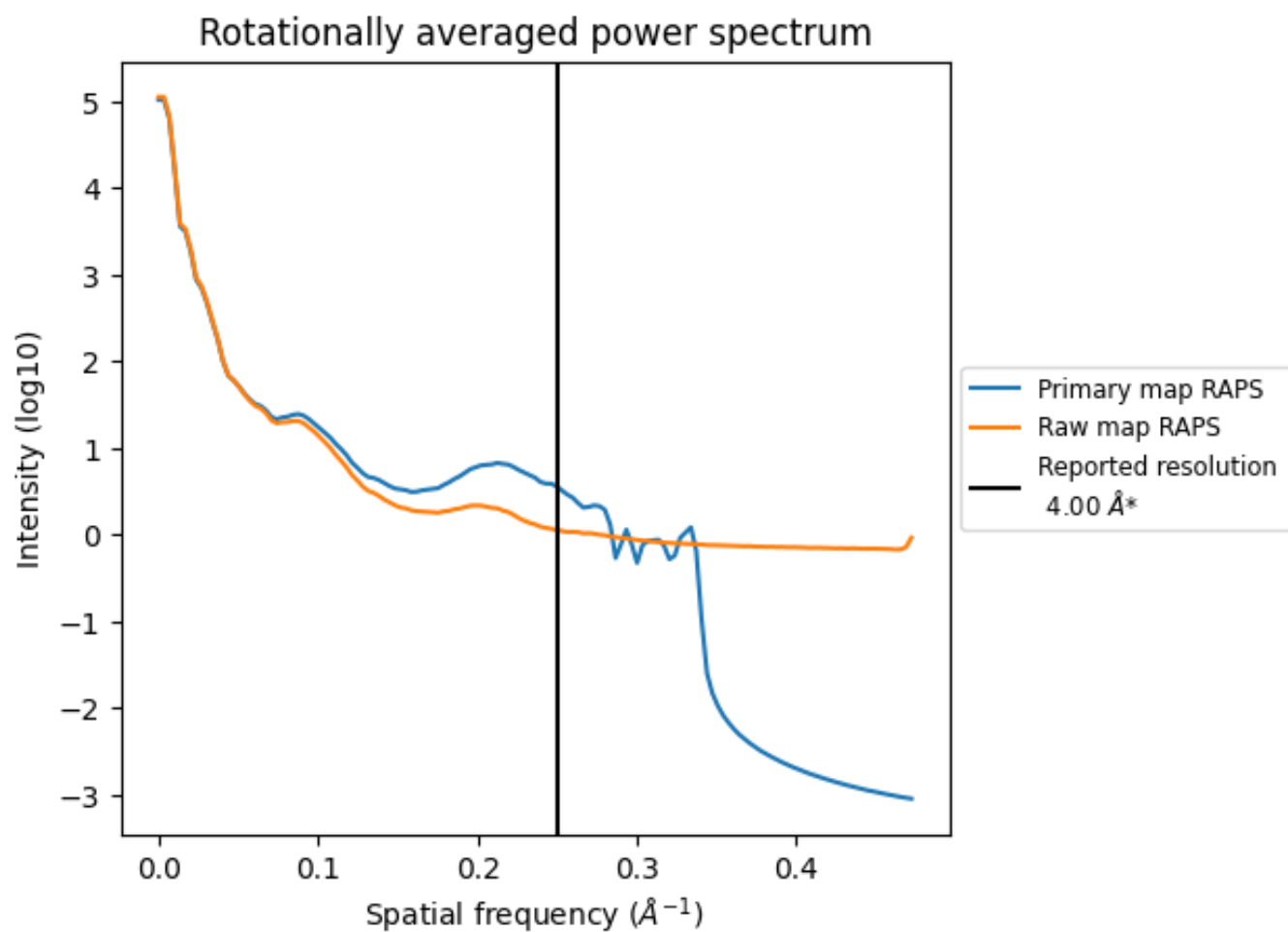
7.2 Volume estimate [i](#)



The volume at the recommended contour level is 203 nm³; this corresponds to an approximate mass of 184 kDa.

The volume estimate graph shows how the enclosed volume varies with the contour level. The recommended contour level is shown as a vertical line and the intersection between the line and the curve gives the volume of the enclosed surface at the given level.

7.3 Rotationally averaged power spectrum i

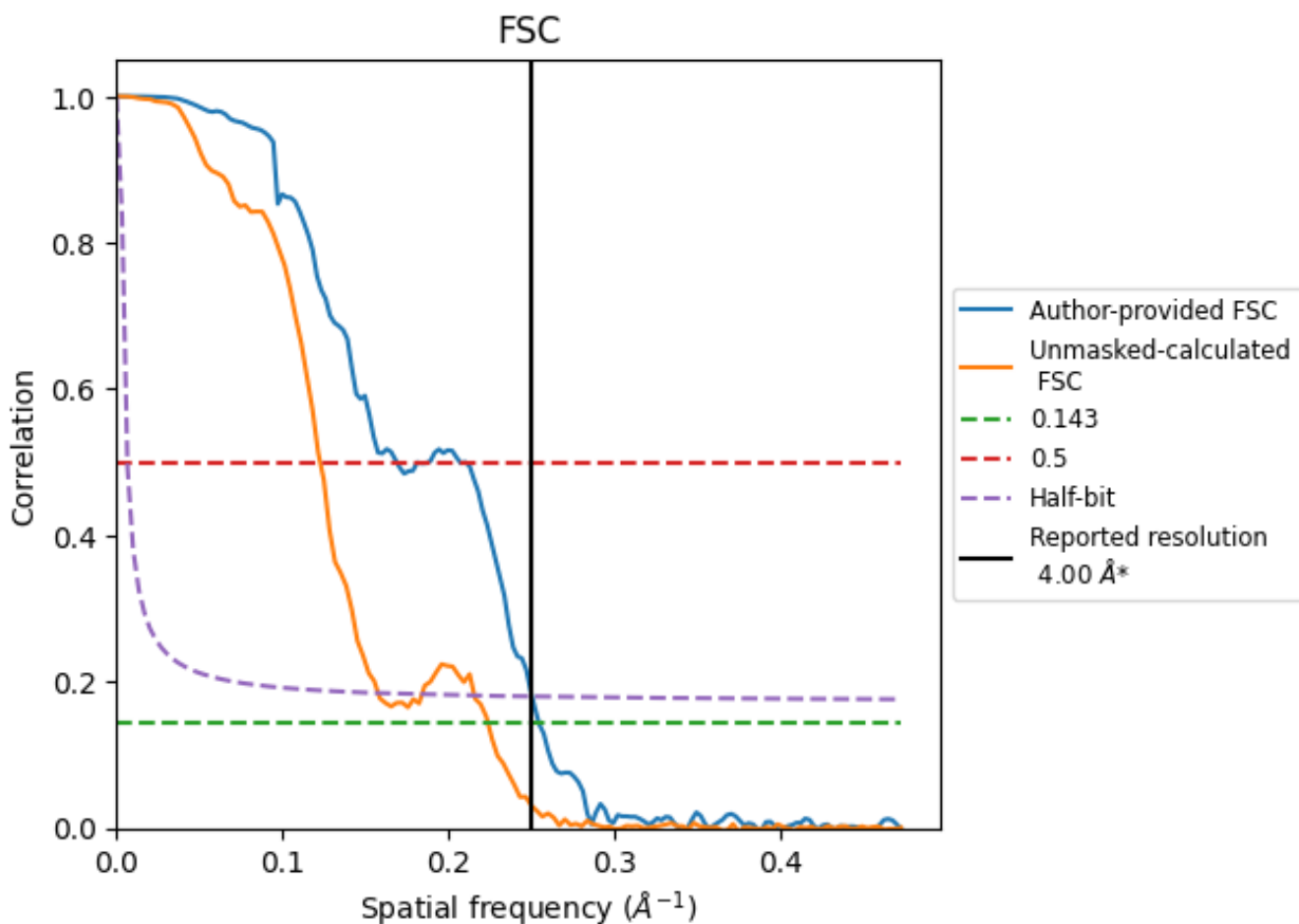


*Reported resolution corresponds to spatial frequency of 0.250 Å⁻¹

8 Fourier-Shell correlation [i](#)

Fourier-Shell Correlation (FSC) is the most commonly used method to estimate the resolution of single-particle and subtomogram-averaged maps. The shape of the curve depends on the imposed symmetry, mask and whether or not the two 3D reconstructions used were processed from a common reference. The reported resolution is shown as a black line. A curve is displayed for the half-bit criterion in addition to lines showing the 0.143 gold standard cut-off and 0.5 cut-off.

8.1 FSC [i](#)



*Reported resolution corresponds to spatial frequency of 0.250 Å⁻¹

8.2 Resolution estimates [i](#)

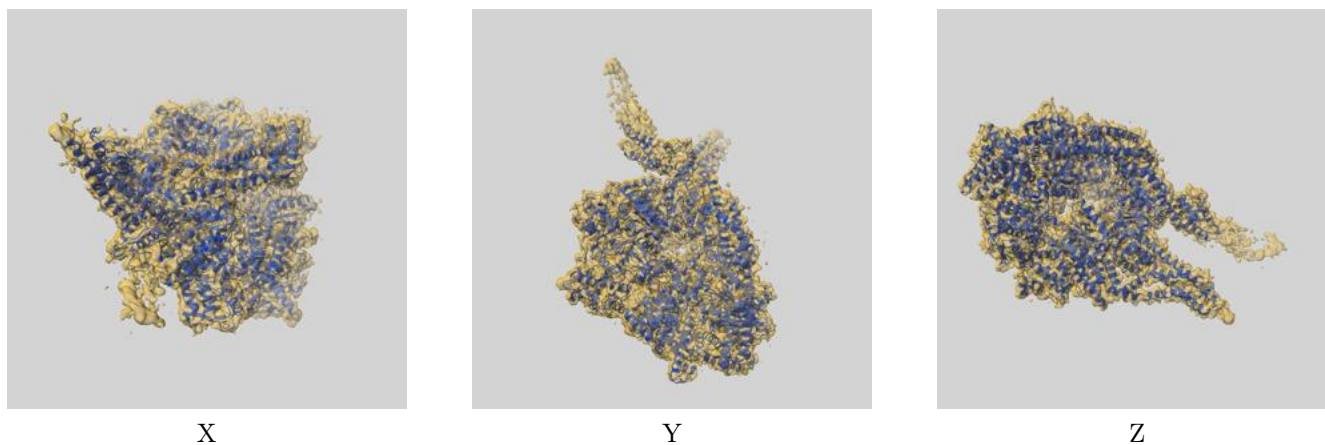
Resolution estimate (Å)	Estimation criterion (FSC cut-off)		
	0.143	0.5	Half-bit
Reported by author	4.00	-	-
Author-provided FSC curve	3.93	5.93	4.00
Unmasked-calculated*	4.47	8.16	6.35

*Resolution estimate based on FSC curve calculated by comparison of deposited half-maps. The value from deposited half-maps intersecting FSC 0.143 CUT-OFF 4.47 differs from the reported value 4.0 by more than 10 %

9 Map-model fit [i](#)

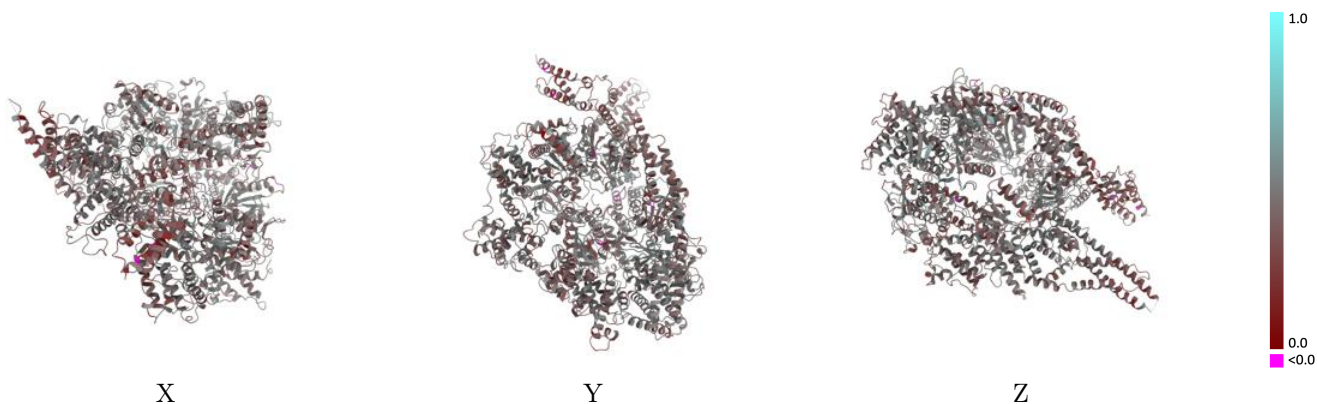
This section contains information regarding the fit between EMDB map EMD-17825 and PDB model 8PQV. Per-residue inclusion information can be found in section 3 on page 4.

9.1 Map-model overlay [i](#)



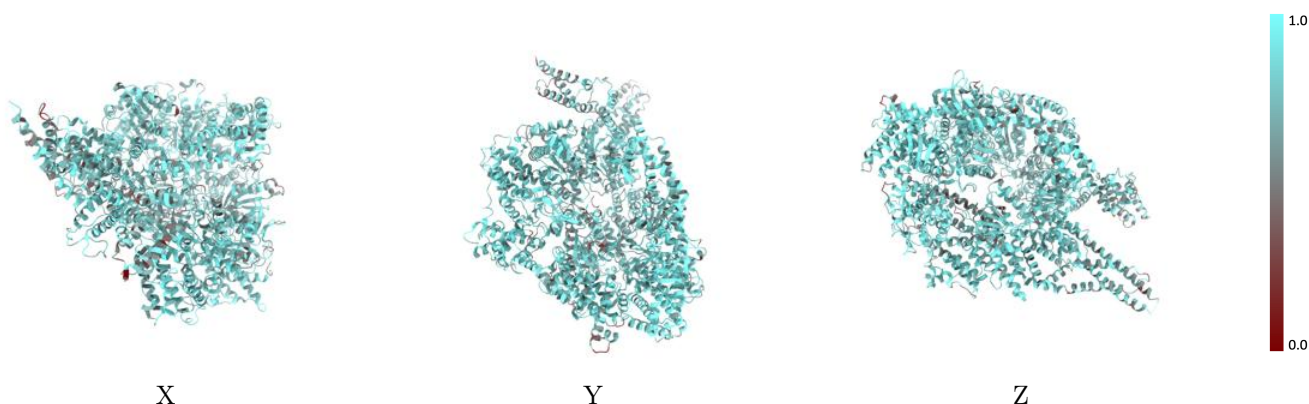
The images above show the 3D surface view of the map at the recommended contour level 0.013 at 50% transparency in yellow overlaid with a ribbon representation of the model coloured in blue. These images allow for the visual assessment of the quality of fit between the atomic model and the map.

9.2 Q-score mapped to coordinate model [i](#)



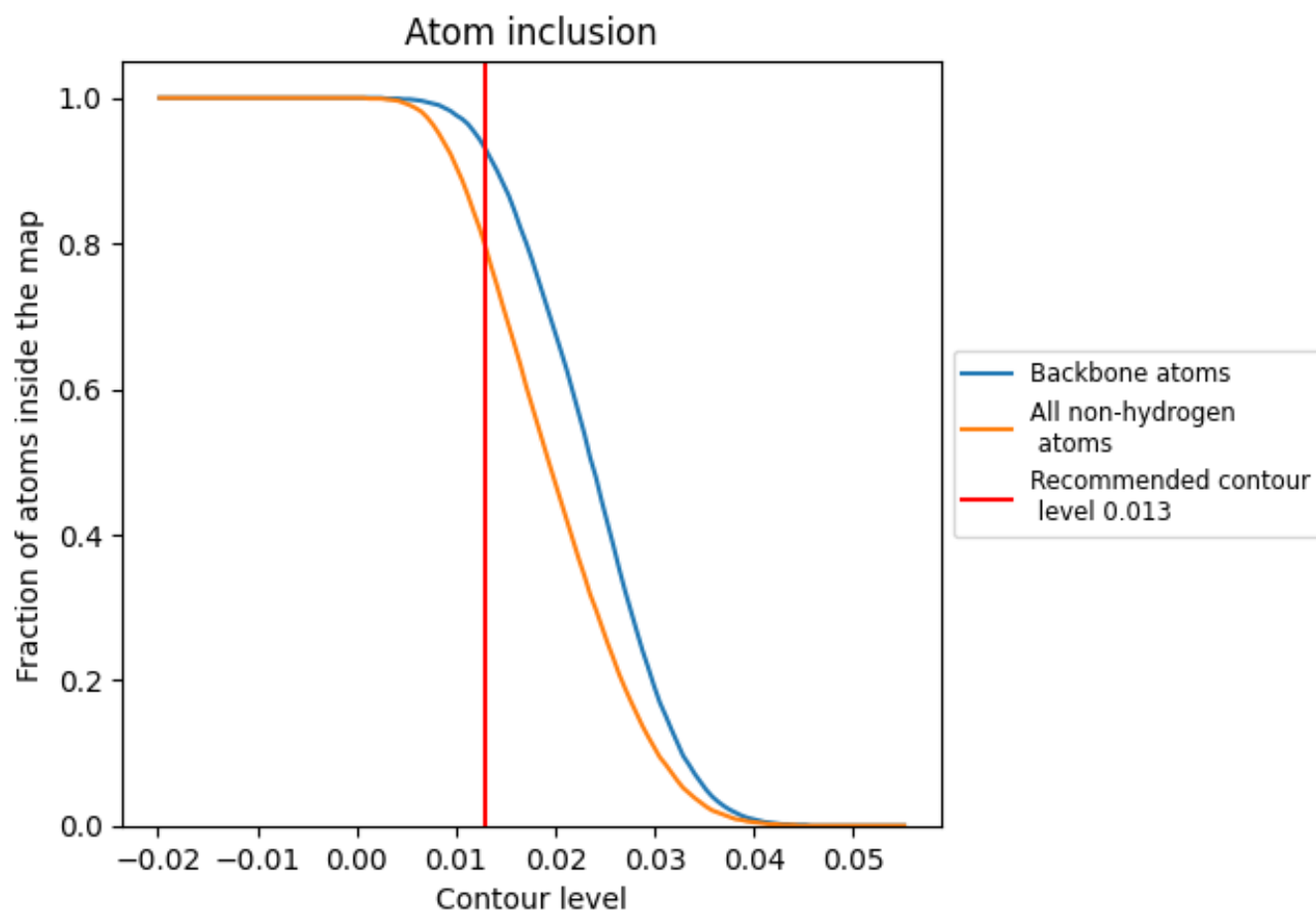
The images above show the model with each residue coloured according its Q-score. This shows their resolvability in the map with higher Q-score values reflecting better resolvability. Please note: Q-score is calculating the resolvability of atoms, and thus high values are only expected at resolutions at which atoms can be resolved. Low Q-score values may therefore be expected for many entries.

9.3 Atom inclusion mapped to coordinate model [i](#)



The images above show the model with each residue coloured according to its atom inclusion. This shows to what extent they are inside the map at the recommended contour level (0.013).


9.4 Atom inclusion [i](#)



At the recommended contour level, 93% of all backbone atoms, 79% of all non-hydrogen atoms, are inside the map.

9.5 Map-model fit summary [i](#)

The table lists the average atom inclusion at the recommended contour level (0.013) and Q-score for the entire model and for each chain.

Chain	Atom inclusion	Q-score
All	 0.7940	 0.4160
A	 0.7930	 0.4160

