



Full wwPDB X-ray Structure Validation Report ⓘ

May 23, 2020 – 06:39 pm BST

PDB ID : 3PXK
Title : FOCAL ADHESION KINASE CATALYTIC DOMAIN IN COMPLEX WITH
Pyrrolo[2,3-d]thiazole
Authors : Koolman, H.; Heinrich, T.; Musil, D.
Deposited on : 2010-12-10
Resolution : 1.79 Å(reported)

This is a Full wwPDB X-ray Structure Validation Report for a publicly released PDB entry.

We welcome your comments at validation@mail.wwpdb.org

A user guide is available at

<https://www.wwpdb.org/validation/2017/XrayValidationReportHelp>

with specific help available everywhere you see the ⓘ symbol.

The following versions of software and data (see [references ⓘ](#)) were used in the production of this report:

MolProbity : 4.02b-467
Mogul : 1.8.5 (274361), CSD as541be (2020)
Xtriage (Phenix) : 1.13
EDS : 2.11
Percentile statistics : 20191225.v01 (using entries in the PDB archive December 25th 2019)
Refmac : 5.8.0158
CCP4 : 7.0.044 (Gargrove)
Ideal geometry (proteins) : Engh & Huber (2001)
Ideal geometry (DNA, RNA) : Parkinson et al. (1996)
Validation Pipeline (wwPDB-VP) : 2.11

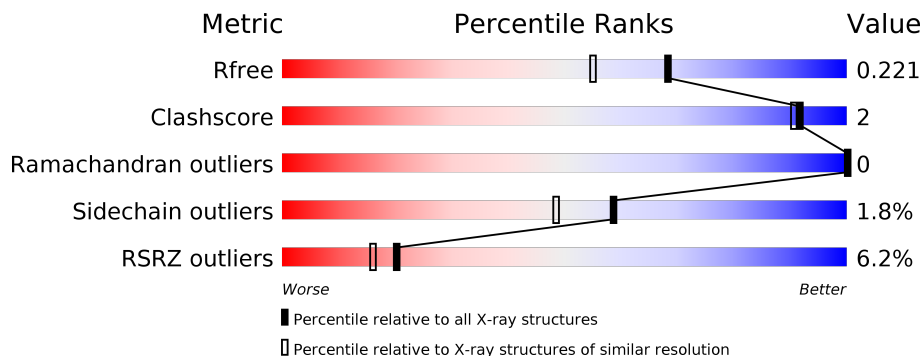
1 Overall quality at a glance

The following experimental techniques were used to determine the structure:

X-RAY DIFFRACTION

The reported resolution of this entry is 1.79 Å.

Percentile scores (ranging between 0-100) for global validation metrics of the entry are shown in the following graphic. The table shows the number of entries on which the scores are based.



Metric	Whole archive (#Entries)	Similar resolution (#Entries, resolution range(Å))
R_{free}	130704	5950 (1.80-1.80)
Clashscore	141614	6793 (1.80-1.80)
Ramachandran outliers	138981	6697 (1.80-1.80)
Sidechain outliers	138945	6696 (1.80-1.80)
RSRZ outliers	127900	5850 (1.80-1.80)

The table below summarises the geometric issues observed across the polymeric chains and their fit to the electron density. The red, orange, yellow and green segments on the lower bar indicate the fraction of residues that contain outliers for ≥ 3 , 2, 1 and 0 types of geometric quality criteria respectively. A grey segment represents the fraction of residues that are not modelled. The numeric value for each fraction is indicated below the corresponding segment, with a dot representing fractions $\leq 5\%$. The upper red bar (where present) indicates the fraction of residues that have poor fit to the electron density. The numeric value is given above the bar.

Mol	Chain	Length	Quality of chain
1	A	282	 5% 87% 5% 9%
1	B	282	 6% 87% 5% 9%

2 Entry composition [i](#)

There are 4 unique types of molecules in this entry. The entry contains 4546 atoms, of which 0 are hydrogens and 0 are deuteriums.

In the tables below, the ZeroOcc column contains the number of atoms modelled with zero occupancy, the AltConf column contains the number of residues with at least one atom in alternate conformation and the Trace column contains the number of residues modelled with at most 2 atoms.

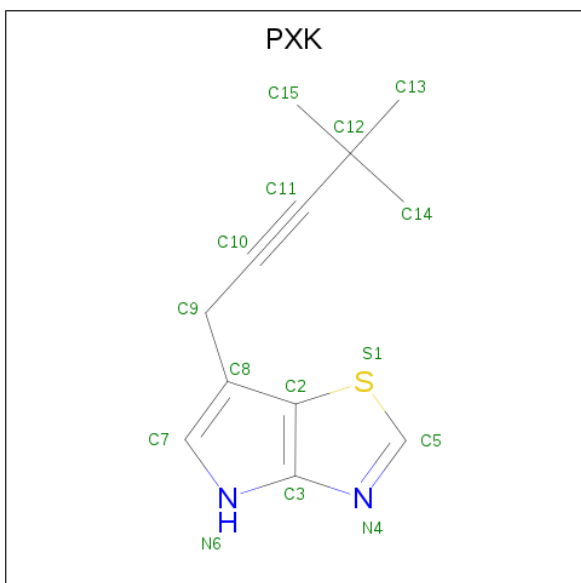
- Molecule 1 is a protein called PTK2 protein.

Mol	Chain	Residues	Atoms					ZeroOcc	AltConf	Trace
			Total	C	N	O	S			
1	A	256	Total 2057	C 1314	N 356	O 370	S 17	0	0	0
1	B	258	Total 2073	C 1324	N 358	O 374	S 17	0	0	0

There are 6 discrepancies between the modelled and reference sequences:

Chain	Residue	Modelled	Actual	Comment	Reference
A	408	GLY	-	expression tag	UNP Q8IYN9
A	409	SER	-	expression tag	UNP Q8IYN9
A	410	GLY	PRO	engineered mutation	UNP Q8IYN9
B	408	GLY	-	expression tag	UNP Q8IYN9
B	409	SER	-	expression tag	UNP Q8IYN9
B	410	GLY	PRO	engineered mutation	UNP Q8IYN9

- Molecule 2 is 6-(4,4-dimethylpent-2-ynyl)-4 {H}-pyrrolo[2,3-d][1,3]thiazole (three-letter code: PXX) (formula: C₁₂H₁₄N₂S).



Mol	Chain	Residues	Atoms				ZeroOcc	AltConf
2	A	1	Total	C	N	S	0	0
			15	12	2	1		
2	B	1	Total	C	N	S	0	0
			15	12	2	1		

- Molecule 3 is SULFATE ION (three-letter code: SO4) (formula: O₄S).



Mol	Chain	Residues	Atoms			ZeroOcc	AltConf
3	B	1	Total	O	S	0	0
			5	4	1		

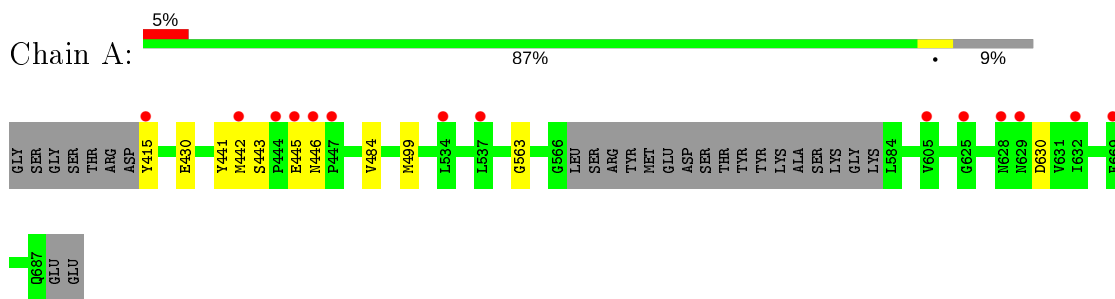
- Molecule 4 is water.

Mol	Chain	Residues	Atoms		ZeroOcc	AltConf
4	A	190	Total	O	0	0
			190	190		
4	B	191	Total	O	0	0
			191	191		

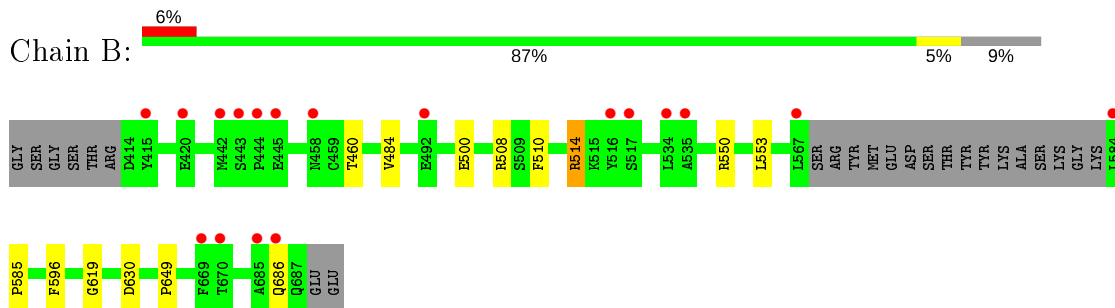
3 Residue-property plots [\(i\)](#)

These plots are drawn for all protein, RNA and DNA chains in the entry. The first graphic for a chain summarises the proportions of the various outlier classes displayed in the second graphic. The second graphic shows the sequence view annotated by issues in geometry and electron density. Residues are color-coded according to the number of geometric quality criteria for which they contain at least one outlier: green = 0, yellow = 1, orange = 2 and red = 3 or more. A red dot above a residue indicates a poor fit to the electron density ($RSRZ > 2$). Stretches of 2 or more consecutive residues without any outlier are shown as a green connector. Residues present in the sample, but not in the model, are shown in grey.

- Molecule 1: PTK2 protein



- Molecule 1: PTK2 protein



4 Data and refinement statistics

Property	Value	Source
Space group	P 1	Depositor
Cell constants a, b, c, α , β , γ	45.43Å 50.87Å 66.89Å 98.16° 101.98° 93.54°	Depositor
Resolution (Å)	26.21 – 1.79 40.92 – 1.79	Depositor EDS
% Data completeness (in resolution range)	93.9 (26.21-1.79) 94.3 (40.92-1.79)	Depositor EDS
R_{merge}	0.04	Depositor
R_{sym}	(Not available)	Depositor
$\langle I/\sigma(I) \rangle$ ¹	2.81 (at 1.79Å)	Xtrriage
Refinement program	REFMAC 5.5.0109, BUSTER 2.11.1	Depositor
R, R_{free}	0.184 , 0.216 0.191 , 0.221	Depositor DCC
R_{free} test set	2608 reflections (5.10%)	wwPDB-VP
Wilson B-factor (Å ²)	29.6	Xtrriage
Anisotropy	0.142	Xtrriage
Bulk solvent k_{sol} (e/Å ³), B_{sol} (Å ²)	0.31 , 43.0	EDS
L-test for twinning ²	$\langle L \rangle = 0.49$, $\langle L^2 \rangle = 0.32$	Xtrriage
Estimated twinning fraction	No twinning to report.	Xtrriage
F_o, F_c correlation	0.96	EDS
Total number of atoms	4546	wwPDB-VP
Average B, all atoms (Å ²)	38.0	wwPDB-VP

Xtrriage's analysis on translational NCS is as follows: *The largest off-origin peak in the Patterson function is 6.81% of the height of the origin peak. No significant pseudotranslation is detected.*

¹Intensities estimated from amplitudes.

²Theoretical values of $\langle |L| \rangle$, $\langle L^2 \rangle$ for acentric reflections are 0.5, 0.333 respectively for untwinned datasets, and 0.375, 0.2 for perfectly twinned datasets.

5 Model quality

5.1 Standard geometry

Bond lengths and bond angles in the following residue types are not validated in this section: PXK, SO4

The Z score for a bond length (or angle) is the number of standard deviations the observed value is removed from the expected value. A bond length (or angle) with $|Z| > 5$ is considered an outlier worth inspection. RMSZ is the root-mean-square of all Z scores of the bond lengths (or angles).

Mol	Chain	Bond lengths		Bond angles	
		RMSZ	# Z >5	RMSZ	# Z >5
1	A	0.51	0/2103	0.61	0/2844
1	B	0.49	0/2119	0.61	0/2866
All	All	0.50	0/4222	0.61	0/5710

There are no bond length outliers.

There are no bond angle outliers.

There are no chirality outliers.

There are no planarity outliers.

5.2 Too-close contacts

In the following table, the Non-H and H(model) columns list the number of non-hydrogen atoms and hydrogen atoms in the chain respectively. The H(added) column lists the number of hydrogen atoms added and optimized by MolProbity. The Clashes column lists the number of clashes within the asymmetric unit, whereas Symm-Clashes lists symmetry related clashes.

Mol	Chain	Non-H	H(model)	H(added)	Clashes	Symm-Clashes
1	A	2057	0	2065	6	0
1	B	2073	0	2080	8	0
2	A	15	0	14	1	0
2	B	15	0	14	0	0
3	B	5	0	0	0	0
4	A	190	0	0	1	0
4	B	191	0	0	1	0
All	All	4546	0	4173	13	0

The all-atom clashscore is defined as the number of clashes found per 1000 atoms (including hydrogen atoms). The all-atom clashscore for this structure is 2.

All (13) close contacts within the same asymmetric unit are listed below, sorted by their clash magnitude.

Atom-1	Atom-2	Interatomic distance (Å)	Clash overlap (Å)
1:A:445:GLU:HA	1:B:596:PHE:O	2.04	0.58
1:B:550:ARG:HH22	1:B:585:PRO:HB3	1.69	0.57
1:B:550:ARG:NH2	1:B:585:PRO:HB3	2.23	0.53
1:B:508:ARG:NH1	1:B:619:GLY:O	2.44	0.51
1:A:484:VAL:CG1	1:A:563:GLY:HA2	2.47	0.45
1:B:484:VAL:HG21	1:B:553:LEU:HD12	1.98	0.45
1:B:484:VAL:HG13	1:B:500:GLU:HB3	1.99	0.44
1:A:499:MET:HE2	1:A:499:MET:HB3	1.80	0.44
1:A:499:MET:SD	2:A:701:PXK:H7	2.60	0.42
1:B:510:PHE:O	1:B:514:ARG:HG3	2.20	0.41
1:B:649:PRO:HD2	4:B:970:HOH:O	2.20	0.41
1:A:441:TYR:CZ	1:A:443:SER:HB3	2.56	0.41
1:A:446:ASN:HB2	4:A:932:HOH:O	2.21	0.40

There are no symmetry-related clashes.

5.3 Torsion angles [i](#)

5.3.1 Protein backbone [i](#)

In the following table, the Percentiles column shows the percent Ramachandran outliers of the chain as a percentile score with respect to all X-ray entries followed by that with respect to entries of similar resolution.

The Analysed column shows the number of residues for which the backbone conformation was analysed, and the total number of residues.

Mol	Chain	Analysed	Favoured	Allowed	Outliers	Percentiles	
1	A	252/282 (89%)	246 (98%)	6 (2%)	0	100	100
1	B	254/282 (90%)	253 (100%)	1 (0%)	0	100	100
All	All	506/564 (90%)	499 (99%)	7 (1%)	0	100	100

There are no Ramachandran outliers to report.

5.3.2 Protein sidechains [i](#)

In the following table, the Percentiles column shows the percent sidechain outliers of the chain as a percentile score with respect to all X-ray entries followed by that with respect to entries of similar

resolution.

The Analysed column shows the number of residues for which the sidechain conformation was analysed, and the total number of residues.

Mol	Chain	Analysed	Rotameric	Outliers	Percentiles	
1	A	227/249 (91%)	223 (98%)	4 (2%)	59	48
1	B	229/249 (92%)	225 (98%)	4 (2%)	60	51
All	All	456/498 (92%)	448 (98%)	8 (2%)	59	48

All (8) residues with a non-rotameric sidechain are listed below:

Mol	Chain	Res	Type
1	A	415	TYR
1	A	430	GLU
1	A	442	MET
1	A	630	ASP
1	B	460	THR
1	B	514	ARG
1	B	630	ASP
1	B	686	GLN

Some sidechains can be flipped to improve hydrogen bonding and reduce clashes. All (3) such sidechains are listed below:

Mol	Chain	Res	Type
1	A	438	GLN
1	A	618	HIS
1	B	438	GLN

5.3.3 RNA [i](#)

There are no RNA molecules in this entry.

5.4 Non-standard residues in protein, DNA, RNA chains [i](#)

There are no non-standard protein/DNA/RNA residues in this entry.

5.5 Carbohydrates [i](#)

There are no carbohydrates in this entry.

5.6 Ligand geometry

3 ligands are modelled in this entry.

In the following table, the Counts columns list the number of bonds (or angles) for which Mogul statistics could be retrieved, the number of bonds (or angles) that are observed in the model and the number of bonds (or angles) that are defined in the Chemical Component Dictionary. The Link column lists molecule types, if any, to which the group is linked. The Z score for a bond length (or angle) is the number of standard deviations the observed value is removed from the expected value. A bond length (or angle) with $|Z| > 2$ is considered an outlier worth inspection. RMSZ is the root-mean-square of all Z scores of the bond lengths (or angles).

Mol	Type	Chain	Res	Link	Bond lengths			Bond angles		
					Counts	RMSZ	# Z > 2	Counts	RMSZ	# Z > 2
2	PXK	A	701	-	12,16,16	3.94	5 (41%)	17,23,23	6.97	8 (47%)
3	SO4	B	701	-	4,4,4	0.41	0	6,6,6	0.26	0
2	PXK	B	702	-	12,16,16	3.78	6 (50%)	17,23,23	6.70	6 (35%)

In the following table, the Chirals column lists the number of chiral outliers, the number of chiral centers analysed, the number of these observed in the model and the number defined in the Chemical Component Dictionary. Similar counts are reported in the Torsion and Rings columns. '-' means no outliers of that kind were identified.

Mol	Type	Chain	Res	Link	Chirals	Torsions	Rings
2	PXK	A	701	-	-	2/6/7/7	0/2/2/2
2	PXK	B	702	-	-	3/6/7/7	0/2/2/2

All (11) bond length outliers are listed below:

Mol	Chain	Res	Type	Atoms	Z	Observed(Å)	Ideal(Å)
2	B	702	PXK	C5-S1	-9.50	1.71	1.81
2	A	701	PXK	C5-S1	-9.41	1.71	1.81
2	A	701	PXK	C5-N4	-6.42	1.29	1.45
2	B	702	PXK	C5-N4	-6.26	1.29	1.45
2	A	701	PXK	C2-S1	-5.07	1.76	1.82
2	A	701	PXK	C8-C2	-4.21	1.39	1.53
2	B	702	PXK	C2-S1	-4.16	1.77	1.82
2	B	702	PXK	C8-C2	-3.55	1.41	1.53
2	A	701	PXK	C7-N6	-2.75	1.37	1.47
2	B	702	PXK	C7-N6	-2.52	1.38	1.47
2	B	702	PXK	C9-C8	-2.07	1.52	1.54

All (14) bond angle outliers are listed below:

Mol	Chain	Res	Type	Atoms	Z	Observed($^{\circ}$)	Ideal($^{\circ}$)
2	A	701	PXK	N6-C3-N4	25.85	140.63	114.18
2	B	702	PXK	N6-C3-N4	25.11	139.86	114.18
2	B	702	PXK	C2-C3-N4	7.28	113.39	103.28
2	A	701	PXK	C2-C3-N4	6.96	112.95	103.28
2	A	701	PXK	C9-C8-C7	6.66	125.92	113.77
2	B	702	PXK	C9-C8-C7	5.92	124.55	113.77
2	A	701	PXK	S1-C5-N4	5.41	111.31	105.72
2	B	702	PXK	S1-C5-N4	4.80	110.68	105.72
2	A	701	PXK	C8-C2-C3	3.21	108.92	102.93
2	B	702	PXK	C8-C2-C3	2.95	108.42	102.93
2	A	701	PXK	C5-S1-C2	-2.92	90.64	92.64
2	A	701	PXK	C3-C2-S1	2.87	107.92	105.15
2	B	702	PXK	C2-C3-N6	2.47	106.72	103.28
2	A	701	PXK	C2-C3-N6	2.26	106.42	103.28

There are no chirality outliers.

All (5) torsion outliers are listed below:

Mol	Chain	Res	Type	Atoms
2	A	701	PXK	C2-C8-C9-C10
2	A	701	PXK	C7-C8-C9-C10
2	B	702	PXK	C7-C8-C9-C10
2	B	702	PXK	C9-C10-C11-C12
2	B	702	PXK	C2-C8-C9-C10

There are no ring outliers.

1 monomer is involved in 1 short contact:

Mol	Chain	Res	Type	Clashes	Symm-Clashes
2	A	701	PXK	1	0

5.7 Other polymers [i](#)

There are no such residues in this entry.

5.8 Polymer linkage issues [i](#)

There are no chain breaks in this entry.

6 Fit of model and data

6.1 Protein, DNA and RNA chains

In the following table, the column labelled '#RSRZ > 2' contains the number (and percentage) of RSRZ outliers, followed by percent RSRZ outliers for the chain as percentile scores relative to all X-ray entries and entries of similar resolution. The OWAB column contains the minimum, median, 95th percentile and maximum values of the occupancy-weighted average B-factor per residue. The column labelled 'Q < 0.9' lists the number of (and percentage) of residues with an average occupancy less than 0.9.

Mol	Chain	Analysed	<RSRZ>	#RSRZ>2	OWAB(Å ²)	Q<0.9
1	A	256/282 (90%)	0.38	14 (5%) 25 20	20, 33, 62, 104	0
1	B	258/282 (91%)	0.43	18 (6%) 16 13	22, 36, 61, 89	0
All	All	514/564 (91%)	0.41	32 (6%) 20 16	20, 35, 61, 104	0

All (32) RSRZ outliers are listed below:

Mol	Chain	Res	Type	RSRZ
1	A	446	ASN	8.9
1	B	444	PRO	7.2
1	B	685	ALA	6.1
1	A	447	PRO	5.6
1	B	415	TYR	4.9
1	A	415	TYR	4.3
1	B	584	LEU	3.9
1	A	444	PRO	3.8
1	B	445	GLU	3.6
1	B	443	SER	3.5
1	B	686	GLN	3.4
1	A	625	GLY	3.3
1	A	669	PHE	3.3
1	B	516	TYR	3.0
1	B	458	ASN	2.8
1	B	534	LEU	2.6
1	A	632	ILE	2.6
1	B	517	SER	2.6
1	A	605	VAL	2.6
1	A	537	LEU	2.5
1	B	492	GLU	2.5
1	A	628	ASN	2.4
1	B	442	MET	2.4
1	A	445	GLU	2.4

Continued on next page...

Continued from previous page...

Mol	Chain	Res	Type	RSRZ
1	B	669	PHE	2.4
1	A	442	MET	2.3
1	A	629	ASN	2.1
1	A	534	LEU	2.1
1	B	567	LEU	2.1
1	B	420	GLU	2.1
1	B	670	THR	2.0
1	B	535	ALA	2.0

6.2 Non-standard residues in protein, DNA, RNA chains [i](#)

There are no non-standard protein/DNA/RNA residues in this entry.

6.3 Carbohydrates [i](#)

There are no carbohydrates in this entry.

6.4 Ligands [i](#)

In the following table, the Atoms column lists the number of modelled atoms in the group and the number defined in the chemical component dictionary. The B-factors column lists the minimum, median, 95th percentile and maximum values of B factors of atoms in the group. The column labelled 'Q< 0.9' lists the number of atoms with occupancy less than 0.9.

Mol	Type	Chain	Res	Atoms	RSCC	RSR	B-factors(Å ²)	Q<0.9
2	PXK	B	702	15/15	0.93	0.10	28,36,42,44	0
3	SO4	B	701	5/5	0.95	0.16	52,56,57,60	0
2	PXK	A	701	15/15	0.97	0.11	25,33,45,45	0

6.5 Other polymers [i](#)

There are no such residues in this entry.