



Full wwPDB X-ray Structure Validation Report ⓘ

Mar 9, 2018 – 03:51 am GMT

PDB ID : 3PXZ
Title : CDK2 ternary complex with JWS648 and ANS
Authors : Betzi, S.; Alam, R.; Schonbrunn, E.
Deposited on : 2010-12-10
Resolution : 1.70 Å(reported)

This is a Full wwPDB X-ray Structure Validation Report for a publicly released PDB entry.

We welcome your comments at validation@mail.wwpdb.org

A user guide is available at

<https://www.wwpdb.org/validation/2017/XrayValidationReportHelp>

with specific help available everywhere you see the ⓘ symbol.

The following versions of software and data (see [references ⓘ](#)) were used in the production of this report:

MolProbity : 4.02b-467
Mogul : 1.7.3 (157068), CSD as539be (2018)
Xtriage (Phenix) : 1.13
EDS : trunk30967
Percentile statistics : 20171227.v01 (using entries in the PDB archive December 27th 2017)
Refmac : 5.8.0158
CCP4 : 7.0 (Gargrove)
Ideal geometry (proteins) : Engh & Huber (2001)
Ideal geometry (DNA, RNA) : Parkinson et al. (1996)
Validation Pipeline (wwPDB-VP) : trunk30967

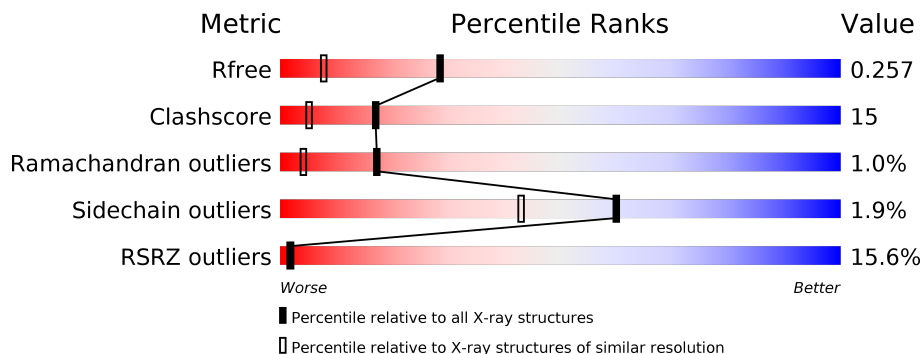
1 Overall quality at a glance

The following experimental techniques were used to determine the structure:

X-RAY DIFFRACTION

The reported resolution of this entry is 1.70 Å.

Percentile scores (ranging between 0-100) for global validation metrics of the entry are shown in the following graphic. The table shows the number of entries on which the scores are based.



Metric	Whole archive (#Entries)	Similar resolution (#Entries, resolution range(Å))
R_{free}	111664	3793 (1.70-1.70)
Clashscore	122126	4167 (1.70-1.70)
Ramachandran outliers	120053	4100 (1.70-1.70)
Sidechain outliers	120020	4100 (1.70-1.70)
RSRZ outliers	108989	3718 (1.70-1.70)

The table below summarises the geometric issues observed across the polymeric chains and their fit to the electron density. The red, orange, yellow and green segments on the lower bar indicate the fraction of residues that contain outliers for ≥ 3 , 2, 1 and 0 types of geometric quality criteria. A grey segment represents the fraction of residues that are not modelled. The numeric value for each fraction is indicated below the corresponding segment, with a dot representing fractions $\leq 5\%$. The upper red bar (where present) indicates the fraction of residues that have poor fit to the electron density. The numeric value is given above the bar.

Mol	Chain	Length	Quality of chain
1	A	306	

2 Entry composition [i](#)

There are 4 unique types of molecules in this entry. The entry contains 2672 atoms, of which 0 are hydrogens and 0 are deuteriums.

In the tables below, the ZeroOcc column contains the number of atoms modelled with zero occupancy, the AltConf column contains the number of residues with at least one atom in alternate conformation and the Trace column contains the number of residues modelled with at most 2 atoms.

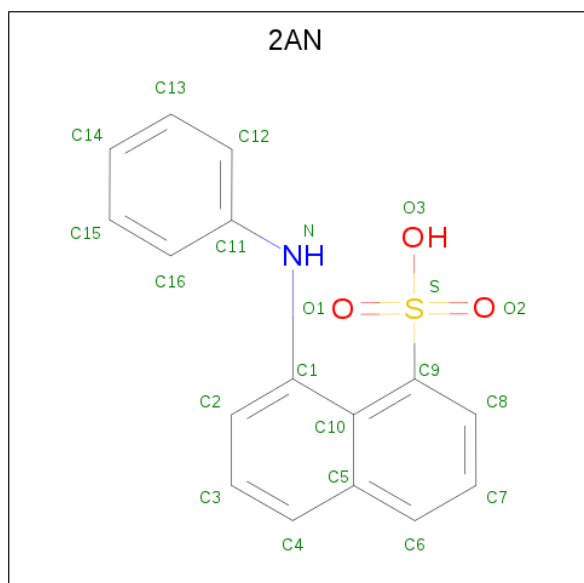
- Molecule 1 is a protein called Cell division protein kinase 2.

Mol	Chain	Residues	Atoms					ZeroOcc	AltConf	Trace
			Total	C	N	O	S			
1	A	302	2431	1581	412	430	8	0	0	0

There are 8 discrepancies between the modelled and reference sequences:

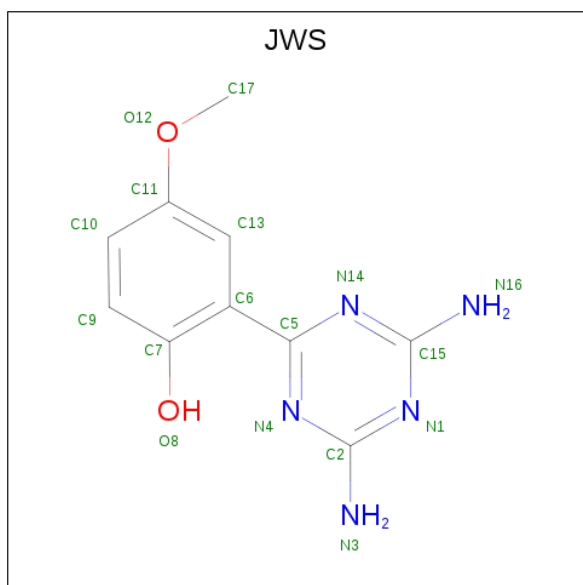
Chain	Residue	Modelled	Actual	Comment	Reference
A	-7	GLY	-	EXPRESSION TAG	UNP P24941
A	-6	PRO	-	EXPRESSION TAG	UNP P24941
A	-5	LEU	-	EXPRESSION TAG	UNP P24941
A	-4	GLY	-	EXPRESSION TAG	UNP P24941
A	-3	SER	-	EXPRESSION TAG	UNP P24941
A	-2	PRO	-	EXPRESSION TAG	UNP P24941
A	-1	GLU	-	EXPRESSION TAG	UNP P24941
A	0	PHE	-	EXPRESSION TAG	UNP P24941

- Molecule 2 is 8-ANILINO-1-NAPHTHALENE SULFONATE (three-letter code: 2AN) (formula: C₁₆H₁₃NO₃S).



Mol	Chain	Residues	Atoms					ZeroOcc	AltConf
2	A	1	Total	C	N	O	S	0	0
			21	16	1	3	1		
2	A	1	Total	C	N	O	S	0	0
			21	16	1	3	1		

- Molecule 3 is 2-(4,6-diamino-1,3,5-triazin-2-yl)-4-methoxyphenol (three-letter code: JWS) (formula: C₁₀H₁₁N₅O₂).



Mol	Chain	Residues	Atoms				ZeroOcc	AltConf
3	A	1	Total	C	N	O	0	0
			17	10	5	2		

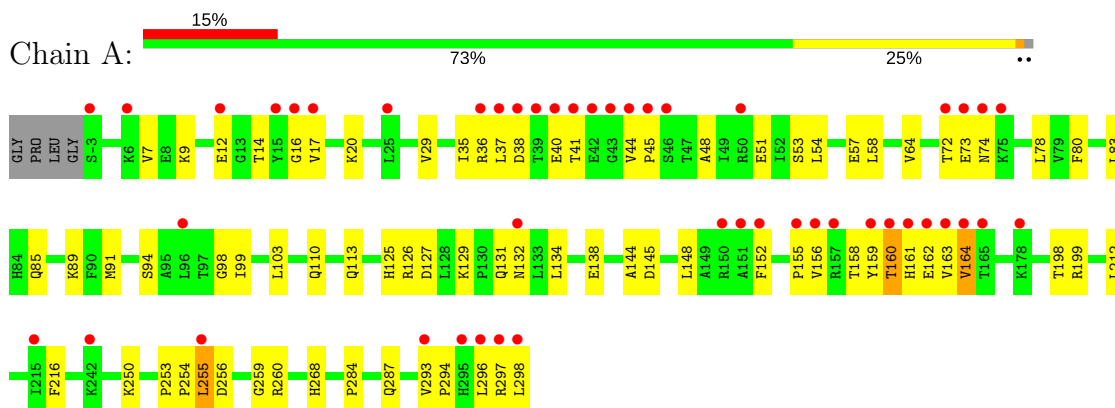
- Molecule 4 is water.

Mol	Chain	Residues	Atoms		ZeroOcc	AltConf
4	A	182	Total	O	0	0
			182	182		

3 Residue-property plots [i](#)

These plots are drawn for all protein, RNA and DNA chains in the entry. The first graphic for a chain summarises the proportions of the various outlier classes displayed in the second graphic. The second graphic shows the sequence view annotated by issues in geometry and electron density. Residues are color-coded according to the number of geometric quality criteria for which they contain at least one outlier: green = 0, yellow = 1, orange = 2 and red = 3 or more. A red dot above a residue indicates a poor fit to the electron density ($RSRZ > 2$). Stretches of 2 or more consecutive residues without any outlier are shown as a green connector. Residues present in the sample, but not in the model, are shown in grey.

- Molecule 1: Cell division protein kinase 2



4 Data and refinement statistics

Property	Value	Source
Space group	P 21 21 21	Depositor
Cell constants a, b, c, α , β , γ	53.09Å 69.64Å 72.64Å 90.00° 90.00° 90.00°	Depositor
Resolution (Å)	19.56 – 1.70 19.56 – 1.70	Depositor EDS
% Data completeness (in resolution range)	99.3 (19.56-1.70) 99.4 (19.56-1.70)	Depositor EDS
R_{merge}	0.03	Depositor
R_{sym}	(Not available)	Depositor
$\langle I/\sigma(I) \rangle$ ¹	4.06 (at 1.70Å)	Xtrriage
Refinement program	CNS 1.2	Depositor
R, R_{free}	0.214 , 0.256 0.214 , 0.257	Depositor DCC
R_{free} test set	1114 reflections (3.70%)	wwPDB-VP
Wilson B-factor (Å ²)	18.2	Xtrriage
Anisotropy	0.316	Xtrriage
Bulk solvent k_{sol} (e/Å ³), B_{sol} (Å ²)	0.39 , 47.9	EDS
L-test for twinning ²	$\langle L \rangle = 0.50$, $\langle L^2 \rangle = 0.33$	Xtrriage
Estimated twinning fraction	0.018 for -h,l,k	Xtrriage
F_o, F_c correlation	0.94	EDS
Total number of atoms	2672	wwPDB-VP
Average B, all atoms (Å ²)	23.0	wwPDB-VP

Xtrriage's analysis on translational NCS is as follows: *The largest off-origin peak in the Patterson function is 5.90% of the height of the origin peak. No significant pseudotranslation is detected.*

¹Intensities estimated from amplitudes.

²Theoretical values of $\langle |L| \rangle$, $\langle L^2 \rangle$ for acentric reflections are 0.5, 0.333 respectively for untwinned datasets, and 0.375, 0.2 for perfectly twinned datasets.

5 Model quality [i](#)

5.1 Standard geometry [i](#)

Bond lengths and bond angles in the following residue types are not validated in this section: 2AN, JWS

The Z score for a bond length (or angle) is the number of standard deviations the observed value is removed from the expected value. A bond length (or angle) with $|Z| > 5$ is considered an outlier worth inspection. RMSZ is the root-mean-square of all Z scores of the bond lengths (or angles).

Mol	Chain	Bond lengths		Bond angles	
		RMSZ	# Z >5	RMSZ	# Z >5
1	A	0.37	0/2495	0.61	0/3386

There are no bond length outliers.

There are no bond angle outliers.

There are no chirality outliers.

There are no planarity outliers.

5.2 Too-close contacts [i](#)

In the following table, the Non-H and H(model) columns list the number of non-hydrogen atoms and hydrogen atoms in the chain respectively. The H(added) column lists the number of hydrogen atoms added and optimized by MolProbity. The Clashes column lists the number of clashes within the asymmetric unit, whereas Symm-Clashes lists symmetry related clashes.

Mol	Chain	Non-H	H(model)	H(added)	Clashes	Symm-Clashes
1	A	2431	0	2477	74	0
2	A	42	0	26	1	0
3	A	17	0	11	4	0
4	A	182	0	0	4	0
All	All	2672	0	2514	75	0

The all-atom clashscore is defined as the number of clashes found per 1000 atoms (including hydrogen atoms). The all-atom clashscore for this structure is 15.

All (75) close contacts within the same asymmetric unit are listed below, sorted by their clash magnitude.

Atom-1	Atom-2	Interatomic distance (Å)	Clash overlap (Å)
1:A:72:THR:HG23	1:A:73:GLU:H	1.37	0.89
1:A:129:LYS:HG2	1:A:132:ASN:OD1	1.75	0.86
1:A:125:HIS:HD2	1:A:127:ASP:H	1.33	0.77
1:A:260:ARG:HD3	4:A:485:HOH:O	1.90	0.70
1:A:35:ILE:HG23	1:A:156:VAL:HG21	1.73	0.68
1:A:132:ASN:HB2	1:A:145:ASP:HB3	1.77	0.67
1:A:51:GLU:HB3	1:A:148:LEU:HD11	1.78	0.66
1:A:256:ASP:O	1:A:260:ARG:HG3	1.96	0.66
1:A:9:LYS:HG3	1:A:17:VAL:HG23	1.77	0.65
1:A:12:GLU:HB2	1:A:160:THR:HG21	1.82	0.61
1:A:14:THR:HG21	4:A:315:HOH:O	2.00	0.61
1:A:85:GLN:NE2	1:A:296:LEU:HD23	2.16	0.61
1:A:129:LYS:NZ	1:A:132:ASN:HB3	2.16	0.60
1:A:294:PRO:HB2	1:A:296:LEU:HD11	1.83	0.60
1:A:54:LEU:O	1:A:58:LEU:HD13	2.02	0.60
1:A:7:VAL:HG11	1:A:20:LYS:HG2	1.85	0.59
1:A:148:LEU:HD13	4:A:370:HOH:O	2.01	0.59
1:A:160:THR:HG23	1:A:161:HIS:H	1.68	0.58
1:A:91:MET:HG2	1:A:99:ILE:HD11	1.86	0.58
1:A:36:ARG:O	1:A:156:VAL:HG23	2.04	0.58
1:A:20:LYS:HE3	1:A:29:VAL:HG21	1.87	0.57
1:A:16:GLY:HA2	1:A:160:THR:HB	1.86	0.57
1:A:158:THR:O	1:A:159:TYR:HB2	2.05	0.56
1:A:72:THR:HG23	1:A:73:GLU:N	2.15	0.56
1:A:35:ILE:HD11	1:A:78:LEU:HD11	1.87	0.56
1:A:14:THR:HG23	1:A:145:ASP:OD1	2.06	0.56
1:A:20:LYS:CE	1:A:29:VAL:HG21	2.36	0.56
1:A:7:VAL:HG12	1:A:20:LYS:O	2.06	0.55
1:A:129:LYS:HZ1	1:A:132:ASN:HB3	1.70	0.55
1:A:38:ASP:O	1:A:155:PRO:HB2	2.07	0.54
1:A:160:THR:HG23	1:A:161:HIS:ND1	2.21	0.54
1:A:255:LEU:HG	1:A:259:GLY:HA3	1.89	0.54
1:A:7:VAL:HG13	1:A:20:LYS:HB3	1.90	0.53
1:A:296:LEU:N	1:A:296:LEU:HD12	2.23	0.53
1:A:125:HIS:HE1	1:A:144:ALA:O	1.93	0.52
1:A:12:GLU:HA	1:A:16:GLY:O	2.10	0.52
1:A:125:HIS:CE1	1:A:132:ASN:ND2	2.78	0.51
1:A:45:PRO:HG2	1:A:48:ALA:HB2	1.92	0.51
1:A:80:PHE:CE2	3:A:301:JWS:H17A	2.47	0.50
1:A:94:SER:O	1:A:98:GLY:N	2.38	0.49
1:A:44:VAL:HG22	1:A:155:PRO:HD2	1.93	0.49
1:A:125:HIS:CD2	1:A:127:ASP:H	2.20	0.49

Continued on next page...

Continued from previous page...

Atom-1	Atom-2	Interatomic distance (Å)	Clash overlap (Å)
1:A:212:LEU:HG	1:A:216:PHE:CZ	2.47	0.49
1:A:293:VAL:O	1:A:293:VAL:HG23	2.13	0.49
1:A:7:VAL:HG12	1:A:20:LYS:C	2.34	0.49
1:A:268:HIS:CD2	4:A:401:HOH:O	2.65	0.49
2:A:300:2AN:O3	3:A:301:JWS:H17	2.13	0.49
1:A:51:GLU:HG3	1:A:152:PHE:CE2	2.49	0.48
1:A:53:SER:O	1:A:57:GLU:HG3	2.13	0.48
1:A:35:ILE:HD11	1:A:78:LEU:CD1	2.43	0.48
1:A:45:PRO:HG2	1:A:48:ALA:CB	2.43	0.48
1:A:160:THR:HG23	1:A:161:HIS:N	2.27	0.47
1:A:83:LEU:HD13	1:A:134:LEU:HB2	1.96	0.47
1:A:9:LYS:HE2	1:A:17:VAL:HG23	1.97	0.46
1:A:253:PRO:HB2	1:A:254:PRO:HD3	1.97	0.45
1:A:12:GLU:O	1:A:12:GLU:HG3	2.16	0.45
1:A:35:ILE:HG22	1:A:37:LEU:HD12	1.98	0.45
1:A:163:VAL:HG22	1:A:164:VAL:N	2.32	0.45
1:A:51:GLU:HG3	1:A:152:PHE:CZ	2.52	0.44
1:A:37:LEU:N	1:A:37:LEU:HD12	2.33	0.43
1:A:85:GLN:OE1	1:A:89:LYS:HG2	2.18	0.43
1:A:110:GLN:HA	1:A:113:GLN:HE21	1.84	0.43
1:A:129:LYS:HZ3	1:A:132:ASN:CG	2.22	0.43
1:A:64:VAL:HG11	3:A:301:JWS:H17B	2.01	0.43
1:A:198:THR:O	1:A:199:ARG:HB2	2.19	0.42
1:A:297:ARG:O	1:A:298:LEU:HD23	2.20	0.42
1:A:284:PRO:O	1:A:287:GLN:HG3	2.19	0.42
1:A:125:HIS:CE1	1:A:132:ASN:HD22	2.38	0.42
1:A:91:MET:HG2	1:A:99:ILE:CD1	2.49	0.41
1:A:131:GLN:HE22	1:A:161:HIS:CE1	2.38	0.41
1:A:125:HIS:O	1:A:126:ARG:HB2	2.21	0.41
1:A:83:LEU:HD13	1:A:134:LEU:CB	2.51	0.41
1:A:40:GLU:HG3	1:A:41:THR:N	2.35	0.41
1:A:132:ASN:CB	1:A:145:ASP:HB3	2.48	0.40
1:A:80:PHE:CD2	3:A:301:JWS:H17A	2.56	0.40

There are no symmetry-related clashes.

5.3 Torsion angles [i](#)

5.3.1 Protein backbone [i](#)

In the following table, the Percentiles column shows the percent Ramachandran outliers of the chain as a percentile score with respect to all X-ray entries followed by that with respect to entries of similar resolution.

The Analysed column shows the number of residues for which the backbone conformation was analysed, and the total number of residues.

Mol	Chain	Analysed	Favoured	Allowed	Outliers	Percentiles
1	A	300/306 (98%)	285 (95%)	12 (4%)	3 (1%)	17 4

All (3) Ramachandran outliers are listed below:

Mol	Chain	Res	Type
1	A	162	GLU
1	A	164	VAL
1	A	160	THR

5.3.2 Protein sidechains [i](#)

In the following table, the Percentiles column shows the percent sidechain outliers of the chain as a percentile score with respect to all X-ray entries followed by that with respect to entries of similar resolution.

The Analysed column shows the number of residues for which the sidechain conformation was analysed, and the total number of residues.

Mol	Chain	Analysed	Rotameric	Outliers	Percentiles
1	A	267/269 (99%)	262 (98%)	5 (2%)	60 43

All (5) residues with a non-rotameric sidechain are listed below:

Mol	Chain	Res	Type
1	A	74	ASN
1	A	103	LEU
1	A	138	GLU
1	A	250	LYS
1	A	255	LEU

Some sidechains can be flipped to improve hydrogen bonding and reduce clashes. All (5) such sidechains are listed below:

Mol	Chain	Res	Type
1	A	74	ASN
1	A	113	GLN
1	A	125	HIS
1	A	268	HIS
1	A	272	ASN

5.3.3 RNA [i](#)

There are no RNA molecules in this entry.

5.4 Non-standard residues in protein, DNA, RNA chains [i](#)

There are no non-standard protein/DNA/RNA residues in this entry.

5.5 Carbohydrates [i](#)

There are no carbohydrates in this entry.

5.6 Ligand geometry [i](#)

3 ligands are modelled in this entry.

In the following table, the Counts columns list the number of bonds (or angles) for which Mogul statistics could be retrieved, the number of bonds (or angles) that are observed in the model and the number of bonds (or angles) that are defined in the Chemical Component Dictionary. The Link column lists molecule types, if any, to which the group is linked. The Z score for a bond length (or angle) is the number of standard deviations the observed value is removed from the expected value. A bond length (or angle) with $|Z| > 2$ is considered an outlier worth inspection. RMSZ is the root-mean-square of all Z scores of the bond lengths (or angles).

Mol	Type	Chain	Res	Link	Bond lengths			Bond angles		
					Counts	RMSZ	# Z > 2	Counts	RMSZ	# Z > 2
2	2AN	A	299	-	23,23,23	2.46	11 (47%)	32,33,33	0.97	2 (6%)
2	2AN	A	300	-	23,23,23	2.55	11 (47%)	32,33,33	1.31	3 (9%)
3	JWS	A	301	-	18,18,18	1.96	4 (22%)	24,25,25	2.30	10 (41%)

In the following table, the Chirals column lists the number of chiral outliers, the number of chiral centers analysed, the number of these observed in the model and the number defined in the Chemical Component Dictionary. Similar counts are reported in the Torsion and Rings columns. '-' means no outliers of that kind were identified.

Mol	Type	Chain	Res	Link	Chirals	Torsions	Rings
2	2AN	A	299	-	-	0/10/10/10	0/3/3/3
2	2AN	A	300	-	-	0/10/10/10	0/3/3/3
3	JWS	A	301	-	-	0/6/6/6	0/2/2/2

All (26) bond length outliers are listed below:

Mol	Chain	Res	Type	Atoms	Z	Observed(Å)	Ideal(Å)
2	A	299	2AN	C11-N	-3.87	1.32	1.40
2	A	300	2AN	C11-N	-3.35	1.33	1.40
3	A	301	JWS	O12-C11	-2.95	1.31	1.37
2	A	299	2AN	C1-N	-2.41	1.31	1.38
2	A	299	2AN	C16-C11	2.10	1.42	1.39
2	A	300	2AN	C15-C16	2.10	1.43	1.38
2	A	299	2AN	C13-C12	2.10	1.43	1.38
2	A	300	2AN	C13-C12	2.15	1.43	1.38
2	A	300	2AN	C12-C11	2.16	1.42	1.39
2	A	299	2AN	C9-C10	2.19	1.46	1.43
2	A	299	2AN	C2-C1	2.66	1.44	1.38
2	A	300	2AN	C9-C10	2.78	1.47	1.43
2	A	300	2AN	C2-C1	2.79	1.44	1.38
3	A	301	JWS	C9-C7	2.91	1.44	1.39
3	A	301	JWS	C10-C11	3.13	1.44	1.38
2	A	299	2AN	C12-C11	3.16	1.44	1.39
2	A	300	2AN	O3-S	3.18	1.61	1.45
2	A	299	2AN	C1-C10	3.22	1.47	1.42
2	A	300	2AN	C16-C11	3.23	1.44	1.39
2	A	300	2AN	C1-C10	3.61	1.48	1.42
2	A	299	2AN	O3-S	3.80	1.64	1.45
2	A	299	2AN	C8-C9	3.82	1.42	1.37
3	A	301	JWS	C13-C11	4.08	1.46	1.38
2	A	300	2AN	C8-C9	4.89	1.43	1.37
2	A	299	2AN	C10-C5	5.21	1.53	1.42
2	A	300	2AN	C10-C5	5.53	1.54	1.42

All (15) bond angle outliers are listed below:

Mol	Chain	Res	Type	Atoms	Z	Observed(°)	Ideal(°)
3	A	301	JWS	N14-C15-N1	-3.74	119.49	125.43
3	A	301	JWS	N14-C5-N4	-3.73	119.42	125.31
3	A	301	JWS	N4-C2-N1	-3.57	119.75	125.43
3	A	301	JWS	C10-C11-C13	-2.71	116.84	120.52
2	A	300	2AN	O2-S-C9	2.07	108.44	106.05
2	A	300	2AN	C7-C8-C9	2.15	122.66	120.37

Continued on next page...

Continued from previous page...

Mol	Chain	Res	Type	Atoms	Z	Observed(°)	Ideal(°)
3	A	301	JWS	N3-C2-N1	2.30	120.86	117.25
3	A	301	JWS	C17-O12-C11	2.39	122.70	117.51
2	A	299	2AN	O3-S-C9	2.54	110.85	106.49
3	A	301	JWS	N16-C15-N1	2.64	121.40	117.25
2	A	299	2AN	O1-S-C9	2.95	109.45	106.05
3	A	301	JWS	C15-N1-C2	3.13	120.13	114.84
3	A	301	JWS	C2-N4-C5	3.49	119.96	114.38
3	A	301	JWS	C15-N14-C5	4.30	121.26	114.38
2	A	300	2AN	O1-S-C9	5.14	111.98	106.05

There are no chirality outliers.

There are no torsion outliers.

There are no ring outliers.

2 monomers are involved in 4 short contacts:

Mol	Chain	Res	Type	Clashes	Symm-Clashes
2	A	300	2AN	1	0
3	A	301	JWS	4	0

5.7 Other polymers [i](#)

There are no such residues in this entry.

5.8 Polymer linkage issues [i](#)

There are no chain breaks in this entry.

6 Fit of model and data

6.1 Protein, DNA and RNA chains

In the following table, the column labelled ‘#RSRZ> 2’ contains the number (and percentage) of RSRZ outliers, followed by percent RSRZ outliers for the chain as percentile scores relative to all X-ray entries and entries of similar resolution. The OWAB column contains the minimum, median, 95th percentile and maximum values of the occupancy-weighted average B-factor per residue. The column labelled ‘Q< 0.9’ lists the number of (and percentage) of residues with an average occupancy less than 0.9.

Mol	Chain	Analysed	<RSRZ>	#RSRZ>2	OWAB(Å ²)	Q<0.9
1	A	302/306 (98%)	1.16	47 (15%) 2 2	9, 19, 50, 66	1 (0%)

All (47) RSRZ outliers are listed below:

Mol	Chain	Res	Type	RSRZ
1	A	41	THR	19.4
1	A	298	LEU	16.3
1	A	161	HIS	15.2
1	A	42	GLU	12.2
1	A	163	VAL	11.9
1	A	160	THR	11.0
1	A	39	THR	10.1
1	A	96	LEU	9.3
1	A	297	ARG	8.5
1	A	159	TYR	8.0
1	A	164	VAL	7.4
1	A	162	GLU	6.8
1	A	43	GLY	6.8
1	A	157	ARG	6.4
1	A	17	VAL	6.2
1	A	150	ARG	6.2
1	A	40	GLU	6.1
1	A	38	ASP	5.5
1	A	295	HIS	5.3
1	A	155	PRO	5.1
1	A	296	LEU	5.0
1	A	156	VAL	4.9
1	A	74	ASN	4.8
1	A	132	ASN	4.5
1	A	73	GLU	4.3
1	A	37	LEU	3.9
1	A	45	PRO	3.8

Continued on next page...

Continued from previous page...

Mol	Chain	Res	Type	RSRZ
1	A	44	VAL	3.8
1	A	72	THR	3.5
1	A	50	ARG	3.5
1	A	36	ARG	3.0
1	A	25	LEU	3.0
1	A	293	VAL	3.0
1	A	6	LYS	2.9
1	A	-3	SER	2.8
1	A	15	TYR	2.7
1	A	255	LEU	2.6
1	A	165	THR	2.5
1	A	16	GLY	2.5
1	A	75	LYS	2.5
1	A	151	ALA	2.4
1	A	152	PHE	2.3
1	A	46	SER	2.3
1	A	178	LYS	2.1
1	A	242	LYS	2.1
1	A	12	GLU	2.0
1	A	215	ILE	2.0

6.2 Non-standard residues in protein, DNA, RNA chains [i](#)

There are no non-standard protein/DNA/RNA residues in this entry.

6.3 Carbohydrates [i](#)

There are no carbohydrates in this entry.

6.4 Ligands [i](#)

In the following table, the Atoms column lists the number of modelled atoms in the group and the number defined in the chemical component dictionary. The B-factors column lists the minimum, median, 95th percentile and maximum values of B factors of atoms in the group. The column labelled 'Q<0.9' lists the number of atoms with occupancy less than 0.9.

Mol	Type	Chain	Res	Atoms	RSCC	RSR	B-factors(Å ²)	Q<0.9
3	JWS	A	301	17/17	0.89	0.13	18,20,25,27	0
2	2AN	A	299	21/21	0.96	0.10	17,20,23,24	0
2	2AN	A	300	21/21	0.97	0.12	12,13,19,20	0

6.5 Other polymers [i](#)

There are no such residues in this entry.