



wwPDB X-ray Structure Validation Summary Report

Feb 24, 2022 – 02:31 pm GMT

PDB ID : 7PYR
Title : Crystal structure of the adenosine A2A receptor (A2A-PSB1-bRIL) in complex with preladenant conjugate PSB-2115
Authors : Claff, T.; Klapschinski, T.A.; Tiruttani Subhramanyam, U.K.; Vaassen, V.J.; Schlegel, J.G.; Vielmuth, C.; Voss, J.H.; Labahn, J.; Muller, C.E.
Deposited on : 2021-10-11
Resolution : 2.60 Å(reported)

This is a wwPDB X-ray Structure Validation Summary Report for a publicly released PDB entry.

We welcome your comments at validation@mail.wwpdb.org

A user guide is available at

<https://www.wwpdb.org/validation/2017/XrayValidationReportHelp>

with specific help available everywhere you see the  symbol.

The following versions of software and data (see [references](#) ) were used in the production of this report:

MolProbity : 4.02b-467
Mogul : 1.8.4, CSD as541be (2020)
Xtriage (Phenix) : 1.13
EDS : 2.26
buster-report : 1.1.7 (2018)
Percentile statistics : 20191225.v01 (using entries in the PDB archive December 25th 2019)
Refmac : 5.8.0267
CCP4 : 7.1.010 (Gargrove)
Ideal geometry (proteins) : Engh & Huber (2001)
Ideal geometry (DNA, RNA) : Parkinson et al. (1996)
Validation Pipeline (wwPDB-VP) : 2.26

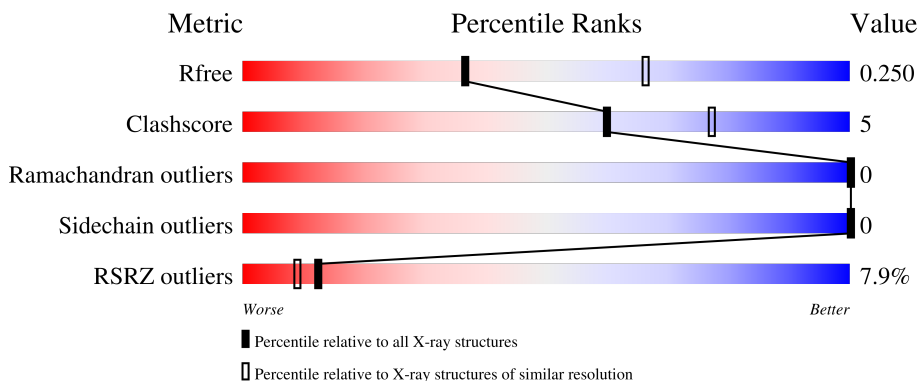
1 Overall quality at a glance

The following experimental techniques were used to determine the structure:

X-RAY DIFFRACTION

The reported resolution of this entry is 2.60 Å.

Percentile scores (ranging between 0-100) for global validation metrics of the entry are shown in the following graphic. The table shows the number of entries on which the scores are based.



Metric	Whole archive (#Entries)	Similar resolution (#Entries, resolution range(Å))
R_{free}	130704	3163 (2.60-2.60)
Clashscore	141614	3518 (2.60-2.60)
Ramachandran outliers	138981	3455 (2.60-2.60)
Sidechain outliers	138945	3455 (2.60-2.60)
RSRZ outliers	127900	3104 (2.60-2.60)

The table below summarises the geometric issues observed across the polymeric chains and their fit to the electron density. The red, orange, yellow and green segments of the lower bar indicate the fraction of residues that contain outliers for ≥ 3 , 2, 1 and 0 types of geometric quality criteria respectively. A grey segment represents the fraction of residues that are not modelled. The numeric value for each fraction is indicated below the corresponding segment, with a dot representing fractions $\leq 5\%$. The upper red bar (where present) indicates the fraction of residues that have poor fit to the electron density. The numeric value is given above the bar.

Mol	Chain	Length	Quality of chain
1	A	447	

The following table lists non-polymeric compounds, carbohydrate monomers and non-standard residues in protein, DNA, RNA chains that are outliers for geometric or electron-density-fit criteria:

Mol	Type	Chain	Res	Chirality	Geometry	Clashes	Electron density
4	OLA	A	2423	-	-	-	X

Continued on next page...

Continued from previous page...

Mol	Type	Chain	Res	Chirality	Geometry	Clashes	Electron density
4	OLA	A	2428	-	-	-	X

2 Entry composition [i](#)

There are 7 unique types of molecules in this entry. The entry contains 3776 atoms, of which 0 are hydrogens and 0 are deuteriums.

In the tables below, the ZeroOcc column contains the number of atoms modelled with zero occupancy, the AltConf column contains the number of residues with at least one atom in alternate conformation and the Trace column contains the number of residues modelled with at most 2 atoms.

- Molecule 1 is a protein called Adenosine receptor A2a,Soluble cytochrome b562,Adenosine receptor A2a.

Mol	Chain	Residues	Atoms					ZeroOcc	AltConf	Trace
			Total	C	N	O	S			
1	A	390	3005	1957	506	521	21	0	0	0

There are 40 discrepancies between the modelled and reference sequences:

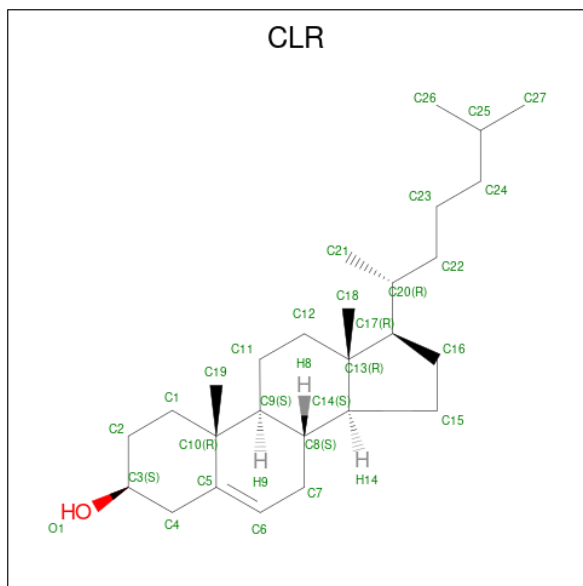
Chain	Residue	Modelled	Actual	Comment	Reference
A	-24	MET	-	initiating methionine	UNP P29274
A	-23	LYS	-	expression tag	UNP P29274
A	-22	THR	-	expression tag	UNP P29274
A	-21	ILE	-	expression tag	UNP P29274
A	-20	ILE	-	expression tag	UNP P29274
A	-19	ALA	-	expression tag	UNP P29274
A	-18	LEU	-	expression tag	UNP P29274
A	-17	SER	-	expression tag	UNP P29274
A	-16	TYR	-	expression tag	UNP P29274
A	-15	ILE	-	expression tag	UNP P29274
A	-14	PHE	-	expression tag	UNP P29274
A	-13	CYS	-	expression tag	UNP P29274
A	-12	LEU	-	expression tag	UNP P29274
A	-11	VAL	-	expression tag	UNP P29274
A	-10	PHE	-	expression tag	UNP P29274
A	-9	ALA	-	expression tag	UNP P29274
A	-8	ASP	-	expression tag	UNP P29274
A	-7	TYR	-	expression tag	UNP P29274
A	-6	LYS	-	expression tag	UNP P29274
A	-5	ASP	-	expression tag	UNP P29274
A	-4	ASP	-	expression tag	UNP P29274
A	-3	ASP	-	expression tag	UNP P29274
A	-2	ASP	-	expression tag	UNP P29274
A	-1	GLY	-	expression tag	UNP P29274
A	0	ALA	-	expression tag	UNP P29274
A	1	PRO	-	expression tag	UNP P29274

Continued on next page...

Continued from previous page...

Chain	Residue	Modelled	Actual	Comment	Reference
A	91	LYS	SER	engineered mutation	UNP P29274
A	1007	TRP	MET	engineered mutation	UNP P0ABE7
A	1102	ILE	HIS	engineered mutation	UNP P0ABE7
A	1106	LEU	ARG	engineered mutation	UNP P0ABE7
A	317	HIS	-	expression tag	UNP P29274
A	318	HIS	-	expression tag	UNP P29274
A	319	HIS	-	expression tag	UNP P29274
A	320	HIS	-	expression tag	UNP P29274
A	321	HIS	-	expression tag	UNP P29274
A	322	HIS	-	expression tag	UNP P29274
A	323	HIS	-	expression tag	UNP P29274
A	324	HIS	-	expression tag	UNP P29274
A	325	HIS	-	expression tag	UNP P29274
A	326	HIS	-	expression tag	UNP P29274

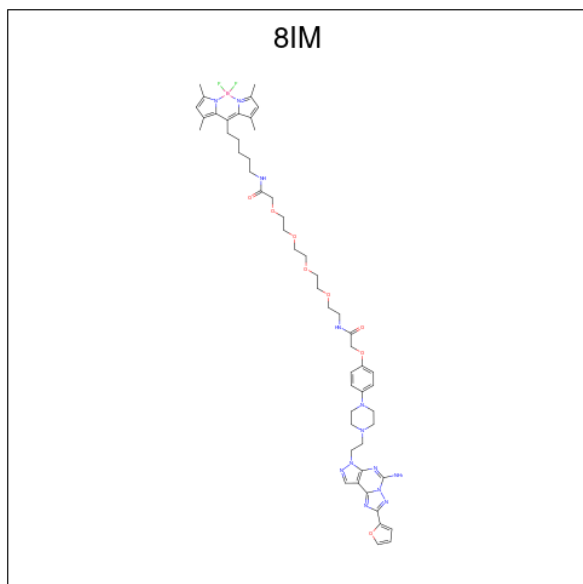
- Molecule 2 is CHOLESTEROL (three-letter code: CLR) (formula: $C_{27}H_{46}O$).



Mol	Chain	Residues	Atoms		ZeroOcc	AltConf
2	A	1	Total	C O	0	0
			28	27 1		
2	A	1	Total	C O	0	0
			28	27 1		
2	A	1	Total	C O	0	0
			28	27 1		

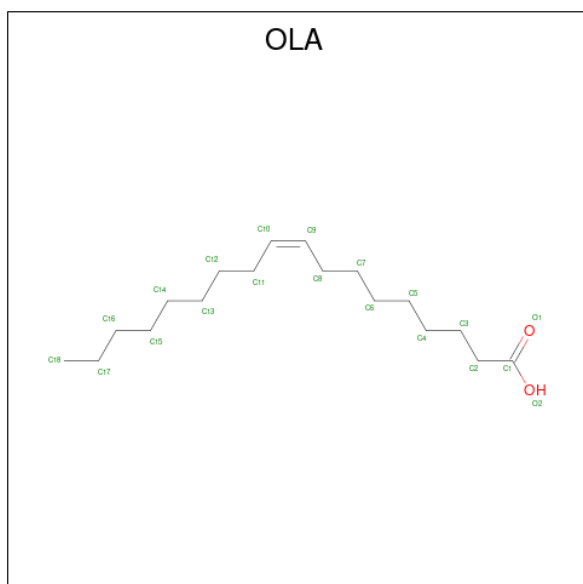
- Molecule 3 is 2-[2-[2-[2-[2-[4-[4-[2-[7-azanyl-4-(furan-2-yl)-3,5,6,8,10,11-hexazatricyclo[7.3.0.0^{2,6}]]dodeca-1(9),2,4,7,11-pentaen-10-yl]ethyl]piperazin-1-yl]phenoxy]ethanoylamino]et

hoxy]ethoxy]ethoxy]ethoxy]- {N}-[5-[2,2-bis(fluoranyl)-4,6,10,12-tetramethyl-1,3-diaza-2 λ^4 -boratricyclo[7.3.0.0 3,7]dodeca-4,6,9,11-tetraen-8-yl]pentyl]ethanamide (three-letter code: 8IM) (formula: C₅₂H₆₈BF₂N₁₃O₈) (labeled as "Ligand of Interest" by depositor).



Mol	Chain	Residues	Atoms				ZeroOcc	AltConf
			Total	C	N	O		
3	A	1	50	33	10	7	0	0

- Molecule 4 is OLEIC ACID (three-letter code: OLA) (formula: C₁₈H₃₄O₂).



Mol	Chain	Residues	Atoms			ZeroOcc	AltConf
			Total	C	O		
4	A	1	9	7	2	0	0

Continued on next page...

Continued from previous page...

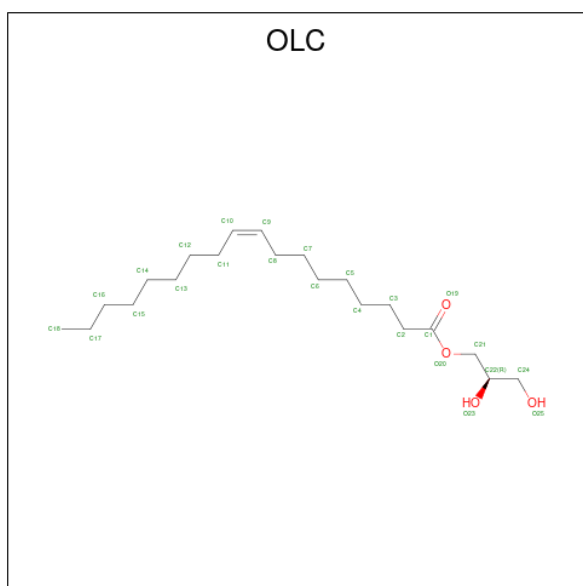
Mol	Chain	Residues	Atoms			ZeroOcc	AltConf
4	A	1	Total	C	O	0	0
			11	9	2		
4	A	1	Total	C	O	0	0
			20	18	2		
4	A	1	Total	C	O	0	0
			19	17	2		
4	A	1	Total	C	O	0	0
			13	11	2		
4	A	1	Total	C	O	0	0
			7	5	2		
4	A	1	Total	C	O	0	0
			16	14	2		
4	A	1	Total	C	O	0	0
			12	10	2		
4	A	1	Total	C	O	0	0
			13	11	2		
4	A	1	Total	C	O	0	0
			12	10	2		
4	A	1	Total	C	O	0	0
			20	18	2		
4	A	1	Total	C	O	0	0
			9	7	2		
4	A	1	Total	C	O	0	0
			11	9	2		
4	A	1	Total	C	O	0	0
			16	14	2		
4	A	1	Total	C	O	0	0
			15	13	2		
4	A	1	Total	C	O	0	0
			15	13	2		
4	A	1	Total	C	O	0	0
			14	12	2		
4	A	1	Total	C	O	0	0
			9	7	2		
4	A	1	Total	C	O	0	0
			11	9	2		
4	A	1	Total	C	O	0	0
			11	9	2		
4	A	1	Total	C	O	0	0
			15	13	2		
4	A	1	Total	C	O	0	0
			14	12	2		

Continued on next page...

Continued from previous page...

Mol	Chain	Residues	Atoms			ZeroOcc	AltConf
4	A	1	Total	C	O	0	0
			20	18	2		
4	A	1	Total	C	O	0	0
			14	12	2		
4	A	1	Total	C	O	0	0
			12	10	2		

- Molecule 5 is (2R)-2,3-dihydroxypropyl (9Z)-octadec-9-enoate (three-letter code: OLC) (formula: C₂₁H₄₀O₄).



Mol	Chain	Residues	Atoms			ZeroOcc	AltConf
5	A	1	Total	C	O	0	0
			25	21	4		
5	A	1	Total	C	O	0	0
			19	15	4		
5	A	1	Total	C	O	0	0
			21	17	4		
5	A	1	Total	C	O	0	0
			19	15	4		

- Molecule 6 is DI(HYDROXYETHYL)ETHER (three-letter code: PEG) (formula: C₄H₁₀O₃).



Mol	Chain	Residues	Atoms	ZeroOcc	AltConf
6	A	1	Total C O 7 4 3	0	0
6	A	1	Total C O 7 4 3	0	0

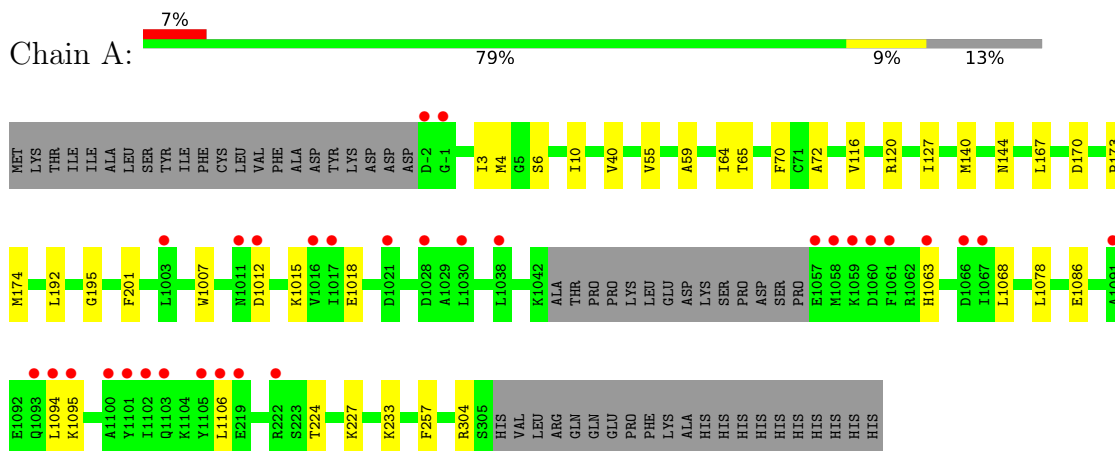
- Molecule 7 is water.

Mol	Chain	Residues	Atoms	ZeroOcc	AltConf
7	A	201	Total O 201 201	0	0

3 Residue-property plots [i](#)

These plots are drawn for all protein, RNA, DNA and oligosaccharide chains in the entry. The first graphic for a chain summarises the proportions of the various outlier classes displayed in the second graphic. The second graphic shows the sequence view annotated by issues in geometry and electron density. Residues are color-coded according to the number of geometric quality criteria for which they contain at least one outlier: green = 0, yellow = 1, orange = 2 and red = 3 or more. A red dot above a residue indicates a poor fit to the electron density ($RSRZ > 2$). Stretches of 2 or more consecutive residues without any outlier are shown as a green connector. Residues present in the sample, but not in the model, are shown in grey.

- Molecule 1: Adenosine receptor A2a,Soluble cytochrome b562,Adenosine receptor A2a



4 Data and refinement statistics

Property	Value	Source
Space group	C 2 2 21	Depositor
Cell constants a, b, c, α , β , γ	39.31Å 180.11Å 140.40Å 90.00° 90.00° 90.00°	Depositor
Resolution (Å)	45.03 – 2.60 45.03 – 2.50	Depositor EDS
% Data completeness (in resolution range)	98.0 (45.03-2.60) 95.3 (45.03-2.50)	Depositor EDS
R_{merge}	(Not available)	Depositor
R_{sym}	(Not available)	Depositor
$\langle I/\sigma(I) \rangle$ ¹	0.37 (at 2.48Å)	Xtrriage
Refinement program	PHENIX 1.19.2_4158	Depositor
R, R_{free}	0.194 , 0.252 0.192 , 0.250	Depositor DCC
R_{free} test set	1780 reflections (10.00%)	wwPDB-VP
Wilson B-factor (Å ²)	37.6	Xtrriage
Anisotropy	0.077	Xtrriage
Bulk solvent k_{sol} (e/Å ³), B_{sol} (Å ²)	(Not available) , (Not available)	EDS
L-test for twinning ²	$\langle L \rangle = 0.49$, $\langle L^2 \rangle = 0.33$	Xtrriage
Estimated twinning fraction	No twinning to report.	Xtrriage
F_o, F_c correlation	0.94	EDS
Total number of atoms	3776	wwPDB-VP
Average B, all atoms (Å ²)	52.0	wwPDB-VP

Xtrriage's analysis on translational NCS is as follows: *The largest off-origin peak in the Patterson function is 7.45% of the height of the origin peak. No significant pseudotranslation is detected.*

¹Intensities estimated from amplitudes.

²Theoretical values of $\langle |L| \rangle$, $\langle L^2 \rangle$ for acentric reflections are 0.5, 0.333 respectively for untwinned datasets, and 0.375, 0.2 for perfectly twinned datasets.

5 Model quality [i](#)

5.1 Standard geometry [i](#)

Bond lengths and bond angles in the following residue types are not validated in this section: OLA, CLR, 8IM, OLC, PEG

The Z score for a bond length (or angle) is the number of standard deviations the observed value is removed from the expected value. A bond length (or angle) with $|Z| > 5$ is considered an outlier worth inspection. RMSZ is the root-mean-square of all Z scores of the bond lengths (or angles).

Mol	Chain	Bond lengths		Bond angles	
		RMSZ	# Z >5	RMSZ	# Z >5
1	A	0.24	0/3068	0.41	0/4175

There are no bond length outliers.

There are no bond angle outliers.

There are no chirality outliers.

There are no planarity outliers.

5.2 Too-close contacts [i](#)

In the following table, the Non-H and H(model) columns list the number of non-hydrogen atoms and hydrogen atoms in the chain respectively. The H(added) column lists the number of hydrogen atoms added and optimized by MolProbity. The Clashes column lists the number of clashes within the asymmetric unit, whereas Symm-Clashes lists symmetry-related clashes.

Mol	Chain	Non-H	H(model)	H(added)	Clashes	Symm-Clashes
1	A	3005	0	3055	26	0
2	A	84	0	138	3	0
3	A	50	0	0	0	0
4	A	338	0	454	14	0
5	A	84	0	119	3	0
6	A	14	0	20	1	0
7	A	201	0	0	2	0
All	All	3776	0	3786	34	0

The all-atom clashscore is defined as the number of clashes found per 1000 atoms (including hydrogen atoms). The all-atom clashscore for this structure is 5.

The worst 5 of 34 close contacts within the same asymmetric unit are listed below, sorted by their clash magnitude.

Atom-1	Atom-2	Interatomic distance (Å)	Clash overlap (Å)
4:A:2420:OLA:H9	5:A:2431:OLC:H3	1.74	0.67
1:A:1018:GLU:OE2	1:A:1095:LYS:NZ	2.29	0.61
1:A:1078:LEU:HD13	1:A:1086:GLU:HG2	1.83	0.61
1:A:192:LEU:HD13	4:A:2415:OLA:H71	1.86	0.58
1:A:304:ARG:NH1	7:A:2501:HOH:O	2.37	0.58

There are no symmetry-related clashes.

5.3 Torsion angles [i](#)

5.3.1 Protein backbone [i](#)

In the following table, the Percentiles column shows the percent Ramachandran outliers of the chain as a percentile score with respect to all X-ray entries followed by that with respect to entries of similar resolution.

The Analysed column shows the number of residues for which the backbone conformation was analysed, and the total number of residues.

Mol	Chain	Analysed	Favoured	Allowed	Outliers	Percentiles
1	A	386/447 (86%)	381 (99%)	5 (1%)	0	100 100

There are no Ramachandran outliers to report.

5.3.2 Protein sidechains [i](#)

In the following table, the Percentiles column shows the percent sidechain outliers of the chain as a percentile score with respect to all X-ray entries followed by that with respect to entries of similar resolution.

The Analysed column shows the number of residues for which the sidechain conformation was analysed, and the total number of residues.

Mol	Chain	Analysed	Rotameric	Outliers	Percentiles
1	A	313/374 (84%)	313 (100%)	0	100 100

There are no protein residues with a non-rotameric sidechain to report.

Sometimes sidechains can be flipped to improve hydrogen bonding and reduce clashes. There are no such sidechains identified.

5.3.3 RNA [i](#)

There are no RNA molecules in this entry.

5.4 Non-standard residues in protein, DNA, RNA chains [i](#)

There are no non-standard protein/DNA/RNA residues in this entry.

5.5 Carbohydrates [i](#)

There are no monosaccharides in this entry.

5.6 Ligand geometry [i](#)

35 ligands are modelled in this entry.

In the following table, the Counts columns list the number of bonds (or angles) for which Mogul statistics could be retrieved, the number of bonds (or angles) that are observed in the model and the number of bonds (or angles) that are defined in the Chemical Component Dictionary. The Link column lists molecule types, if any, to which the group is linked. The Z score for a bond length (or angle) is the number of standard deviations the observed value is removed from the expected value. A bond length (or angle) with $|Z| > 2$ is considered an outlier worth inspection. RMSZ is the root-mean-square of all Z scores of the bond lengths (or angles).

Mol	Type	Chain	Res	Link	Bond lengths			Bond angles		
					Counts	RMSZ	# Z > 2	Counts	RMSZ	# Z > 2
4	OLA	A	2406	-	7,10,19	0.72	0	6,10,19	0.23	0
4	OLA	A	2415	-	16,19,19	0.72	1 (6%)	15,19,19	0.59	0
4	OLA	A	2425	-	11,14,19	0.85	1 (9%)	10,14,19	0.59	0
4	OLA	A	2410	-	3,6,19	0.25	0	2,6,19	0.51	0
4	OLA	A	2428	-	10,13,19	0.91	1 (10%)	8,13,19	0.60	0
4	OLA	A	2417	-	7,10,19	0.20	0	6,10,19	0.67	0
6	PEG	A	2435	-	6,6,6	0.08	0	5,5,5	0.11	0
4	OLA	A	2426	-	10,13,19	0.89	1 (10%)	8,13,19	0.61	0
4	OLA	A	2413	-	9,12,19	0.82	1 (11%)	8,12,19	0.91	0
6	PEG	A	2434	-	6,6,6	0.10	0	5,5,5	0.11	0
4	OLA	A	2414	-	8,11,19	1.02	1 (12%)	7,11,19	0.73	0
2	CLR	A	2401	-	31,31,31	1.97	2 (6%)	48,48,48	3.05	22 (45%)
4	OLA	A	2412	-	8,11,19	1.02	1 (12%)	7,11,19	0.74	0
4	OLA	A	2411	-	12,15,19	0.81	1 (8%)	11,15,19	0.62	0
2	CLR	A	2403	-	31,31,31	1.95	2 (6%)	48,48,48	3.11	23 (47%)

Mol	Type	Chain	Res	Link	Bond lengths			Bond angles		
					Counts	RMSZ	# Z > 2	Counts	RMSZ	# Z > 2
4	OLA	A	2424	-	7,10,19	0.23	0	6,10,19	0.55	0
5	OLC	A	2430	-	24,24,24	0.73	0	25,25,25	0.60	0
3	8IM	A	2404	-	46,55,84	1.46	7 (15%)	52,73,118	1.40	6 (11%)
4	OLA	A	2405	-	5,8,19	0.61	0	4,8,19	0.15	0
5	OLC	A	2431	-	18,18,24	0.81	0	18,19,25	0.76	0
4	OLA	A	2420	-	11,14,19	0.86	1 (9%)	10,14,19	0.57	0
4	OLA	A	2421	-	10,13,19	0.89	1 (10%)	8,13,19	0.66	0
5	OLC	A	2433	-	18,18,24	0.84	0	18,19,25	0.74	0
4	OLA	A	2409	-	9,12,19	0.84	1 (11%)	8,12,19	0.76	0
4	OLA	A	2422	-	5,8,19	0.27	0	4,8,19	0.53	0
4	OLA	A	2408	-	15,18,19	0.71	1 (6%)	14,18,19	0.71	0
4	OLA	A	2407	-	16,19,19	0.71	1 (6%)	15,19,19	0.68	0
4	OLA	A	2416	-	5,8,19	0.24	0	4,8,19	0.53	0
4	OLA	A	2429	-	8,11,19	1.03	1 (12%)	7,11,19	0.67	0
4	OLA	A	2423	-	7,10,19	0.22	0	6,10,19	0.55	0
2	CLR	A	2402	-	31,31,31	1.99	3 (9%)	48,48,48	3.10	24 (50%)
5	OLC	A	2432	-	20,20,24	0.79	0	21,21,25	0.71	0
4	OLA	A	2427	-	16,19,19	0.71	1 (6%)	15,19,19	0.63	0
4	OLA	A	2419	-	11,14,19	0.84	1 (9%)	10,14,19	0.60	0
4	OLA	A	2418	-	12,15,19	0.81	1 (8%)	11,15,19	0.60	0

In the following table, the Chirals column lists the number of chiral outliers, the number of chiral centers analysed, the number of these observed in the model and the number defined in the Chemical Component Dictionary. Similar counts are reported in the Torsion and Rings columns. '2' means no outliers of that kind were identified.

Mol	Type	Chain	Res	Link	Chirals	Torsions	Rings
4	OLA	A	2406	-	-	4/6/8/17	-
4	OLA	A	2415	-	-	9/15/17/17	-
4	OLA	A	2425	-	-	4/10/12/17	-
4	OLA	A	2410	-	-	2/2/4/17	-
4	OLA	A	2428	-	-	4/9/11/17	-
4	OLA	A	2417	-	-	5/6/8/17	-
6	PEG	A	2435	-	-	0/4/4/4	-
4	OLA	A	2426	-	-	6/9/11/17	-
4	OLA	A	2413	-	-	5/8/10/17	-
6	PEG	A	2434	-	-	0/4/4/4	-
4	OLA	A	2414	-	-	5/7/9/17	-

Continued on next page...

Continued from previous page...

Mol	Type	Chain	Res	Link	Chirals	Torsions	Rings
2	CLR	A	2401	-	-	3/10/68/68	0/4/4/4
4	OLA	A	2412	-	-	4/7/9/17	-
4	OLA	A	2411	-	-	9/11/13/17	-
2	CLR	A	2403	-	-	3/10/68/68	0/4/4/4
4	OLA	A	2424	-	-	4/6/8/17	-
5	OLC	A	2430	-	-	14/24/24/24	-
3	8IM	A	2404	-	-	13/28/42/90	0/6/6/9
4	OLA	A	2405	-	-	3/4/6/17	-
5	OLC	A	2431	-	-	10/18/18/24	-
4	OLA	A	2420	-	-	5/10/12/17	-
4	OLA	A	2421	-	-	7/9/11/17	-
5	OLC	A	2433	-	-	7/18/18/24	-
4	OLA	A	2409	-	-	5/8/10/17	-
4	OLA	A	2422	-	-	2/4/6/17	-
4	OLA	A	2408	-	-	8/14/16/17	-
4	OLA	A	2407	-	-	8/15/17/17	-
4	OLA	A	2416	-	-	3/4/6/17	-
4	OLA	A	2429	-	-	5/7/9/17	-
4	OLA	A	2423	-	-	5/6/8/17	-
2	CLR	A	2402	-	-	4/10/68/68	0/4/4/4
5	OLC	A	2432	-	-	11/20/20/24	-
4	OLA	A	2427	-	-	6/15/17/17	-
4	OLA	A	2419	-	-	6/10/12/17	-
4	OLA	A	2418	-	-	8/11/13/17	-

The worst 5 of 31 bond length outliers are listed below:

Mol	Chain	Res	Type	Atoms	Z	Observed(Å)	Ideal(Å)
2	A	2402	CLR	C6-C5	9.50	1.53	1.33
2	A	2401	CLR	C6-C5	9.42	1.53	1.33
2	A	2403	CLR	C6-C5	9.31	1.53	1.33
3	A	2404	8IM	C20-N7	4.60	1.41	1.35
3	A	2404	8IM	C28-N10	3.02	1.47	1.38

The worst 5 of 75 bond angle outliers are listed below:

Mol	Chain	Res	Type	Atoms	Z	Observed(°)	Ideal(°)
2	A	2402	CLR	C7-C6-C5	-9.41	107.70	125.06
2	A	2403	CLR	C7-C6-C5	-9.37	107.77	125.06
2	A	2401	CLR	C7-C6-C5	-9.06	108.34	125.06
2	A	2403	CLR	C4-C5-C6	-8.28	108.67	120.61
2	A	2402	CLR	C4-C5-C6	-8.09	108.95	120.61

There are no chirality outliers.

5 of 197 torsion outliers are listed below:

Mol	Chain	Res	Type	Atoms
3	A	2404	8IM	C34-C35-N1-C8
3	A	2404	8IM	N5-C22-C23-N9
4	A	2405	OLA	C1-C2-C3-C4
4	A	2406	OLA	C1-C2-C3-C4
4	A	2407	OLA	C1-C2-C3-C4

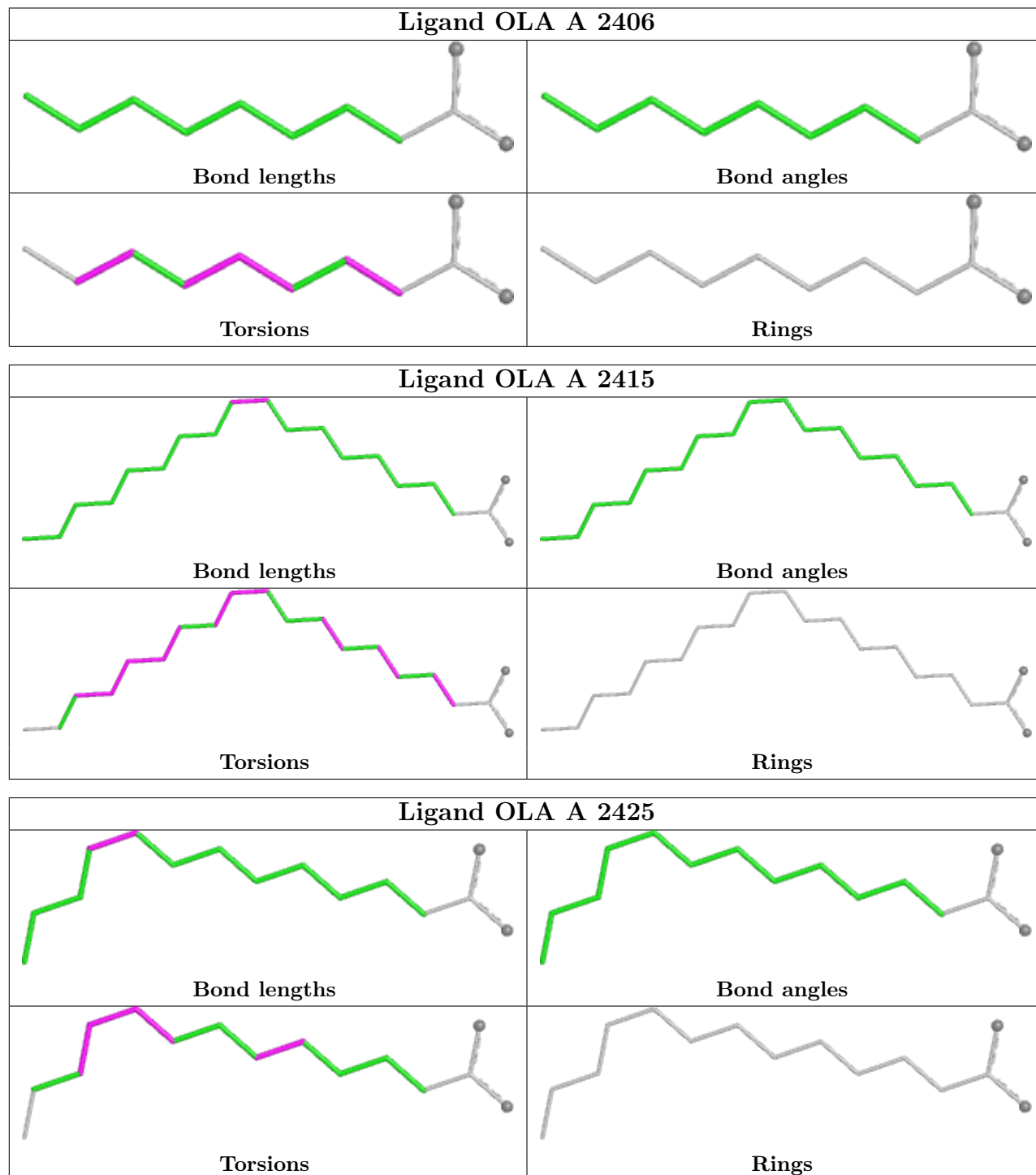
There are no ring outliers.

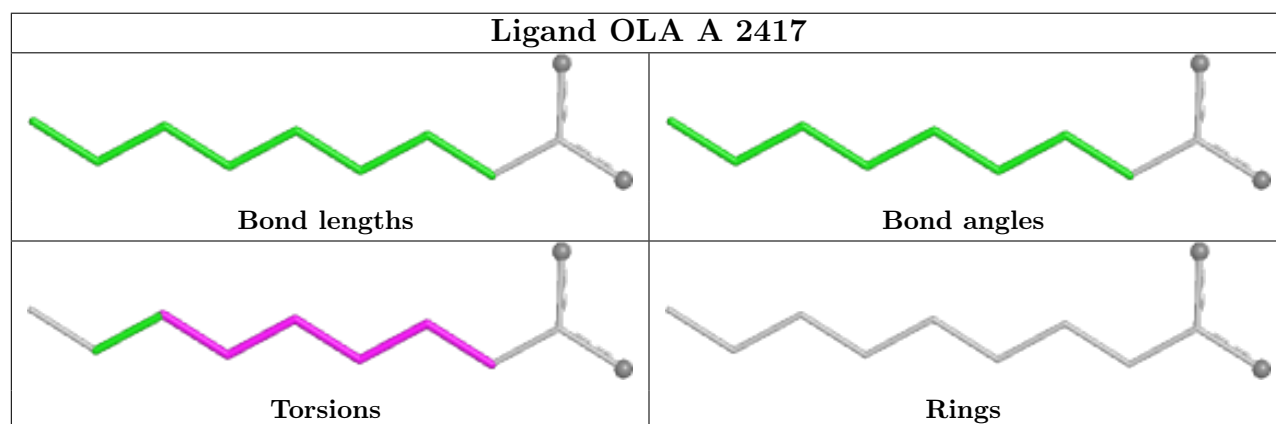
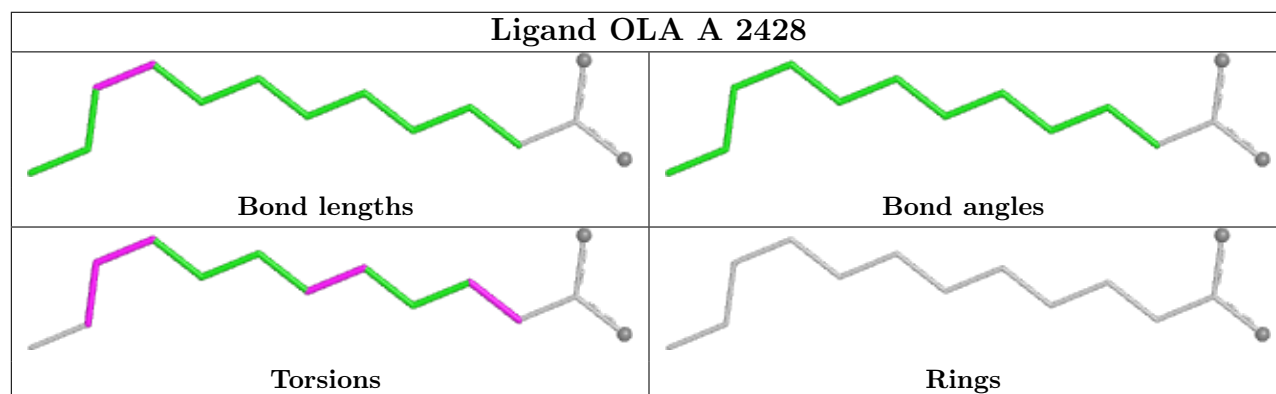
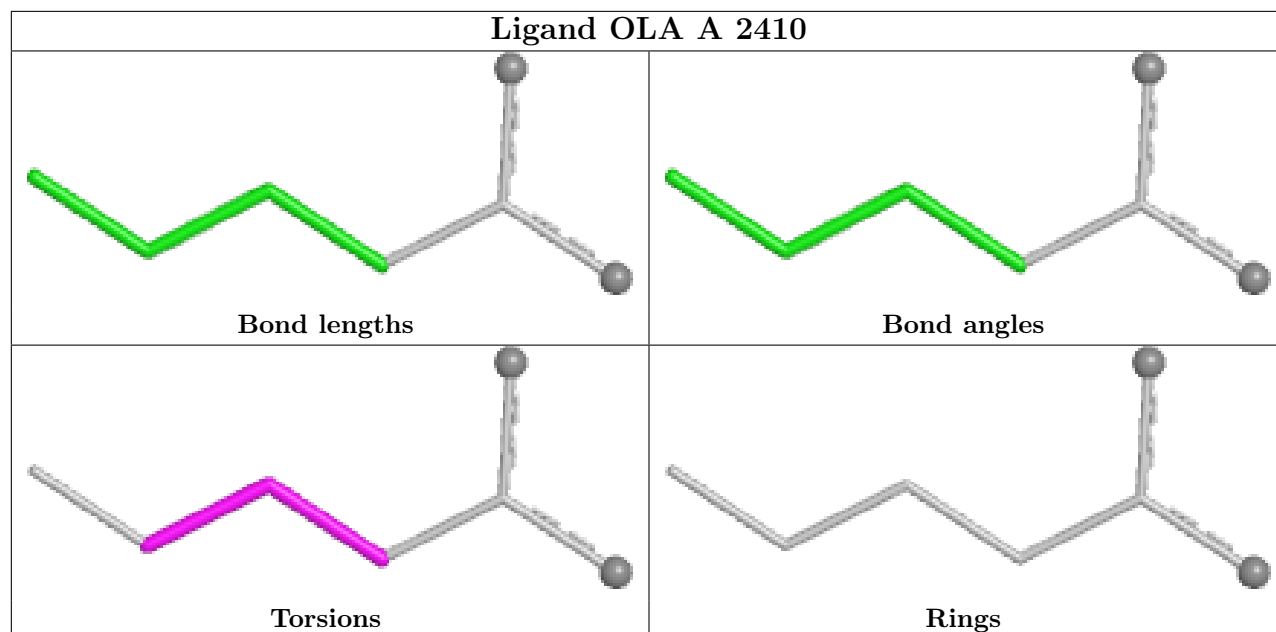
16 monomers are involved in 18 short contacts:

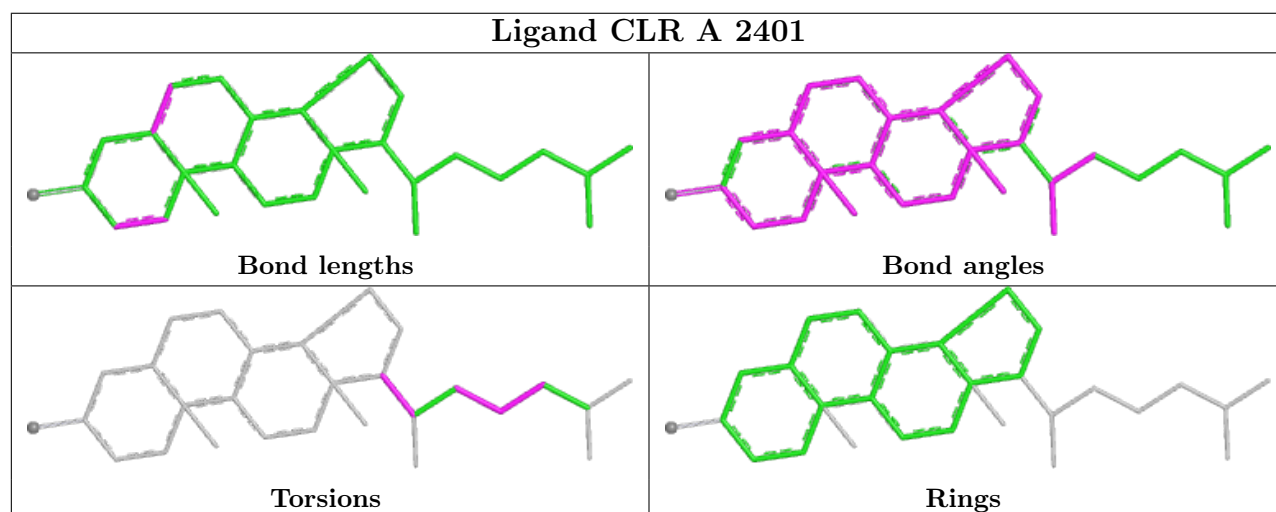
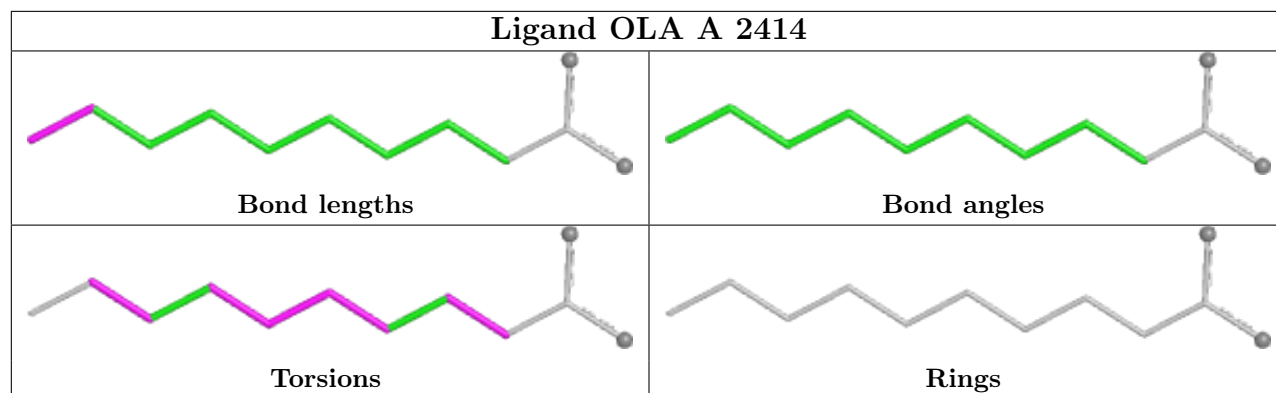
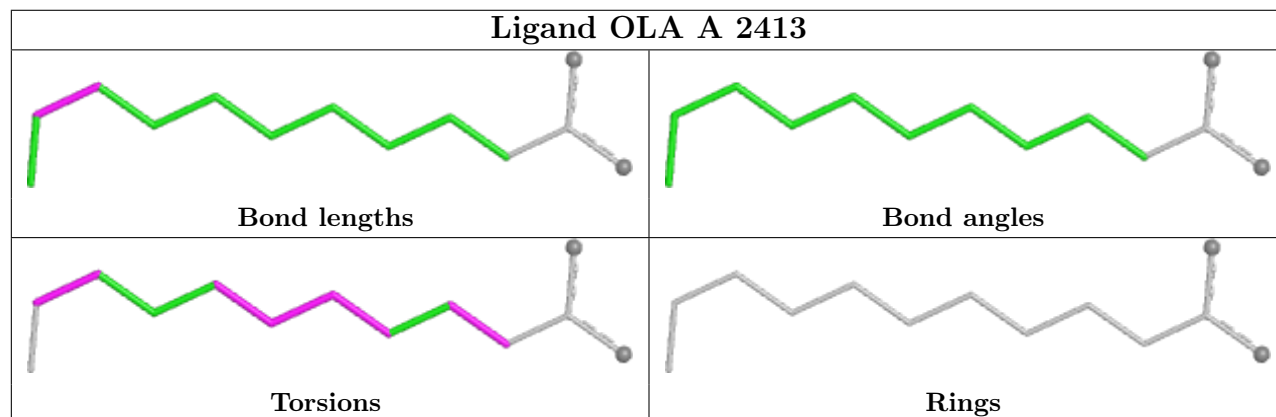
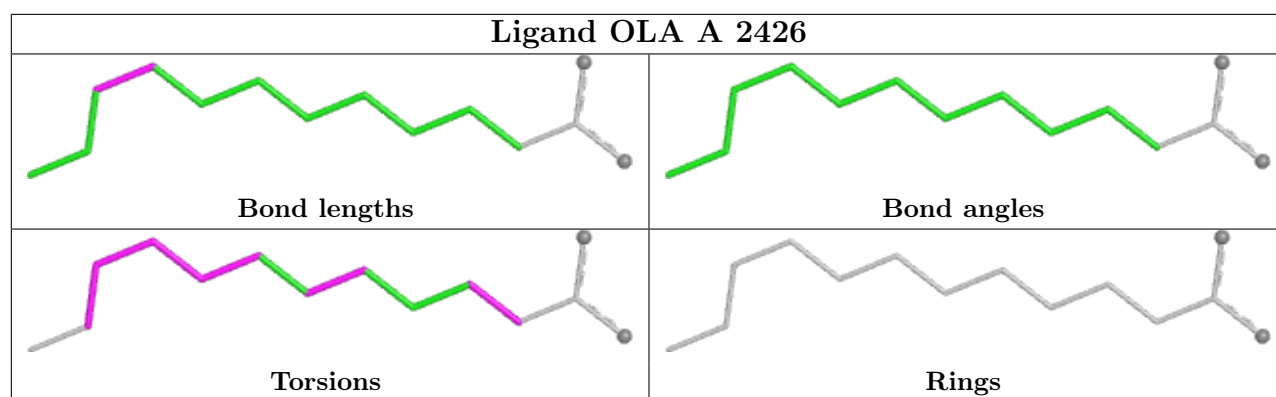
Mol	Chain	Res	Type	Clashes	Symm-Clashes
4	A	2415	OLA	2	0
4	A	2410	OLA	2	0
4	A	2428	OLA	1	0
6	A	2435	PEG	1	0
4	A	2426	OLA	1	0
2	A	2401	CLR	2	0
4	A	2412	OLA	2	0
2	A	2403	CLR	1	0
4	A	2424	OLA	1	0
5	A	2430	OLC	1	0
5	A	2431	OLC	1	0
4	A	2420	OLA	1	0
5	A	2433	OLC	1	0
4	A	2407	OLA	2	0
4	A	2429	OLA	1	0
4	A	2418	OLA	1	0

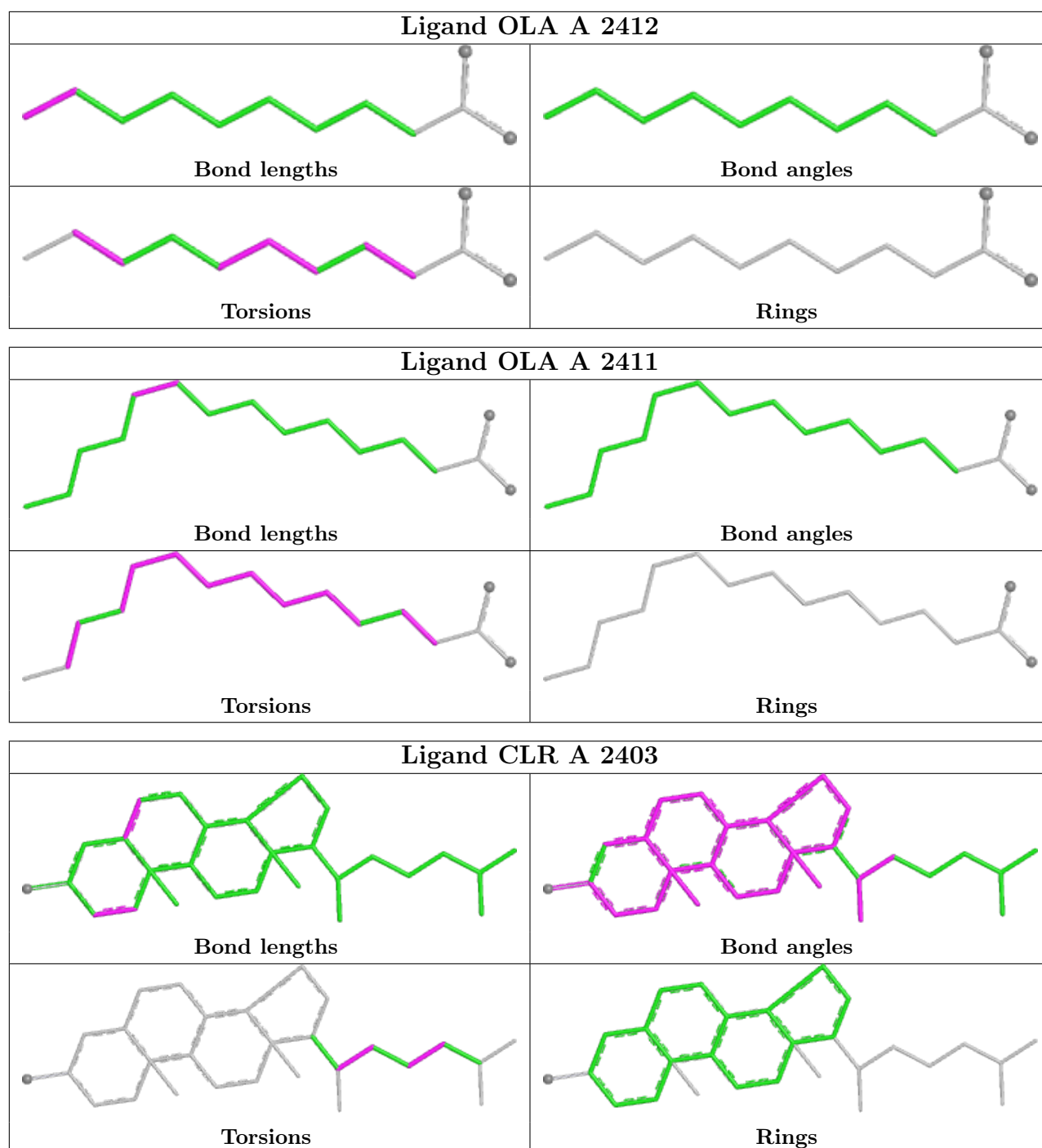
The following is a two-dimensional graphical depiction of Mogul quality analysis of bond lengths, bond angles, torsion angles, and ring geometry for all instances of the Ligand of Interest. In addition, ligands with molecular weight > 250 and outliers as shown on the validation Tables will also be included. For torsion angles, if less than 5% of the Mogul distribution of torsion angles is within 10 degrees of the torsion angle in question, then that torsion angle is considered an outlier. Any bond that is central to one or more torsion angles identified as an outlier by Mogul will be

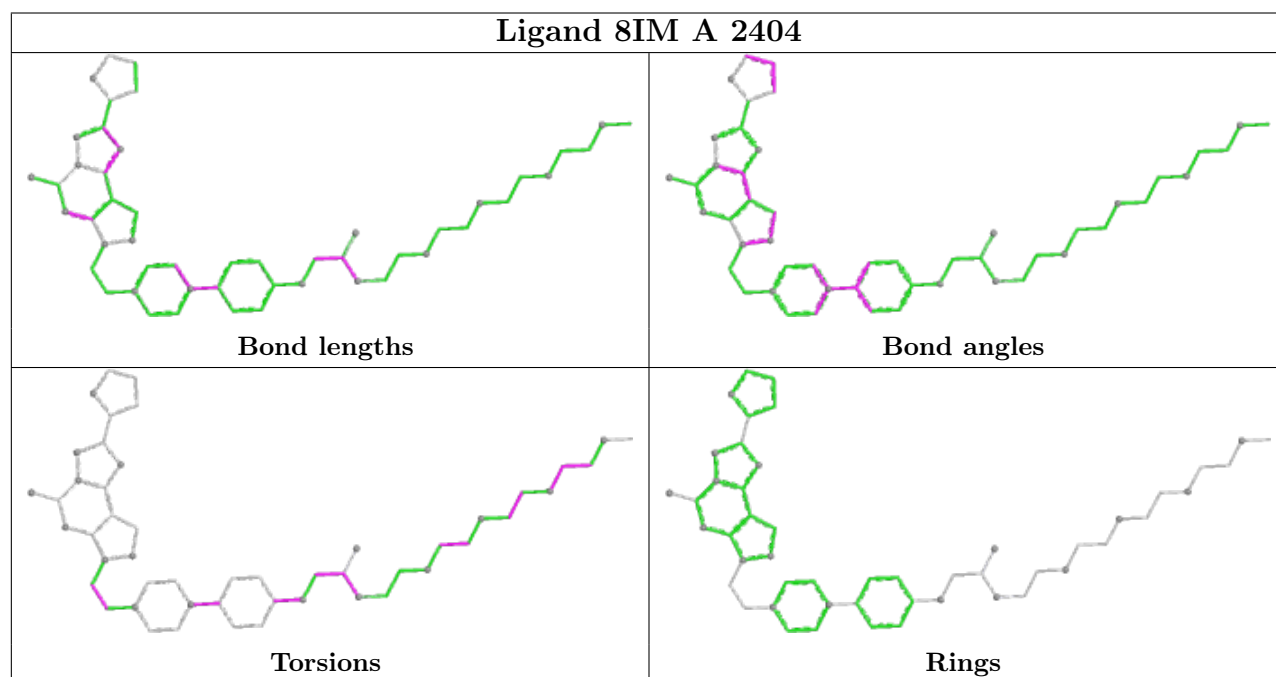
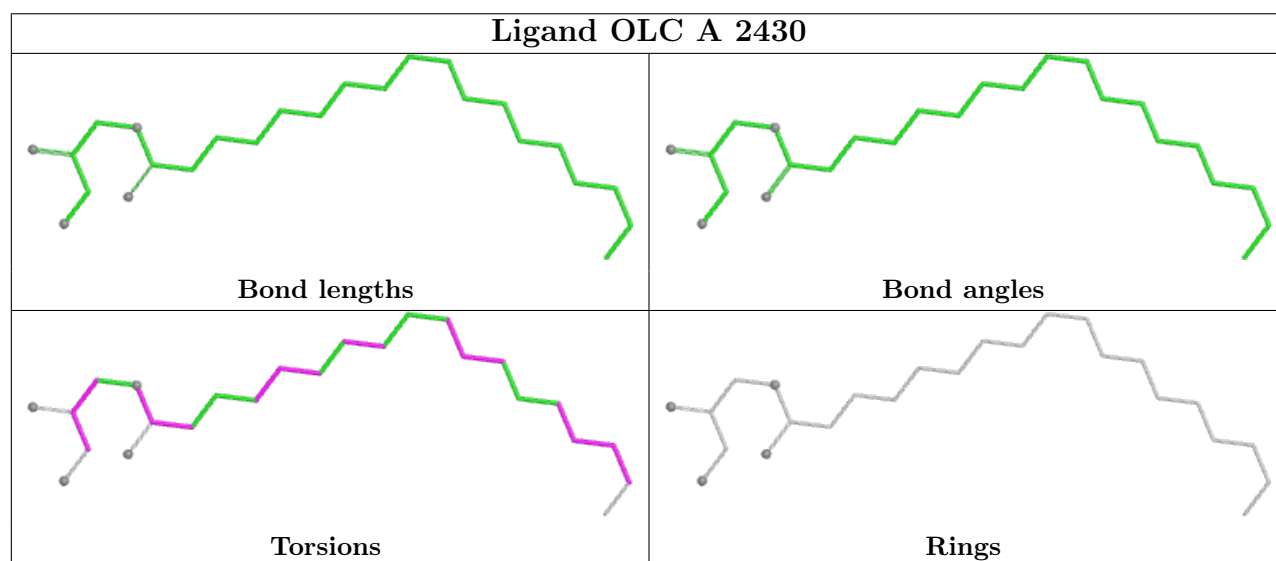
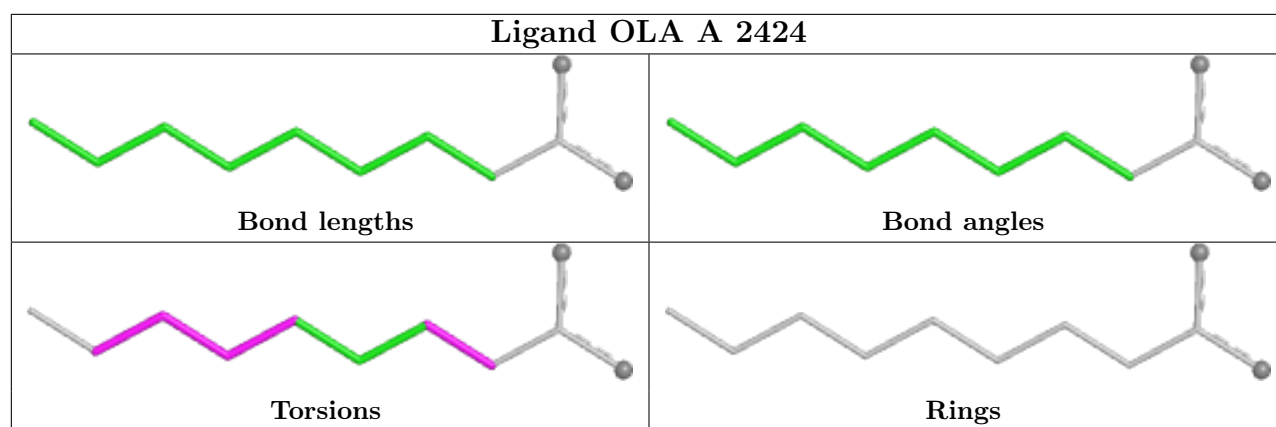
highlighted in the graph. For rings, the root-mean-square deviation (RMSD) between the ring in question and similar rings identified by Mogul is calculated over all ring torsion angles. If the average RMSD is greater than 60 degrees and the minimal RMSD between the ring in question and any Mogul-identified rings is also greater than 60 degrees, then that ring is considered an outlier. The outliers are highlighted in purple. The color gray indicates Mogul did not find sufficient equivalents in the CSD to analyse the geometry.

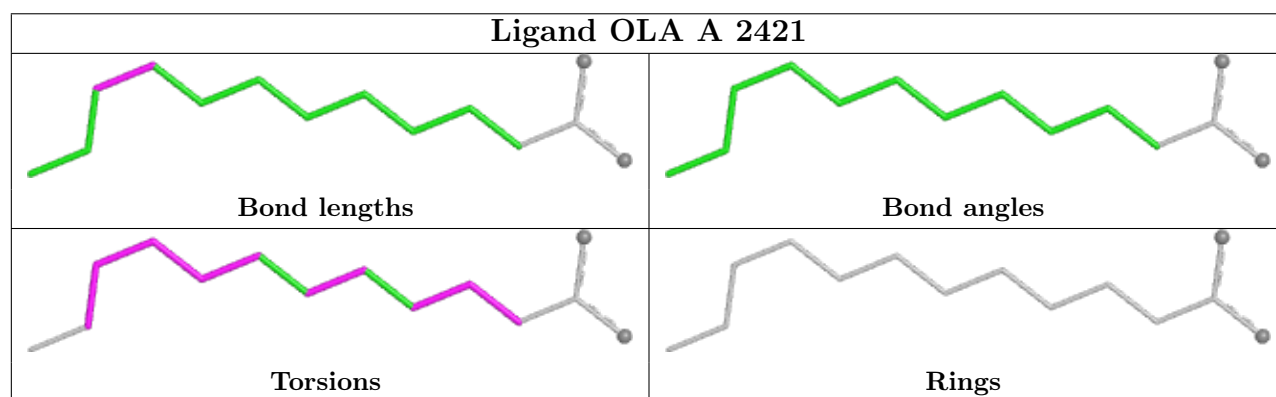
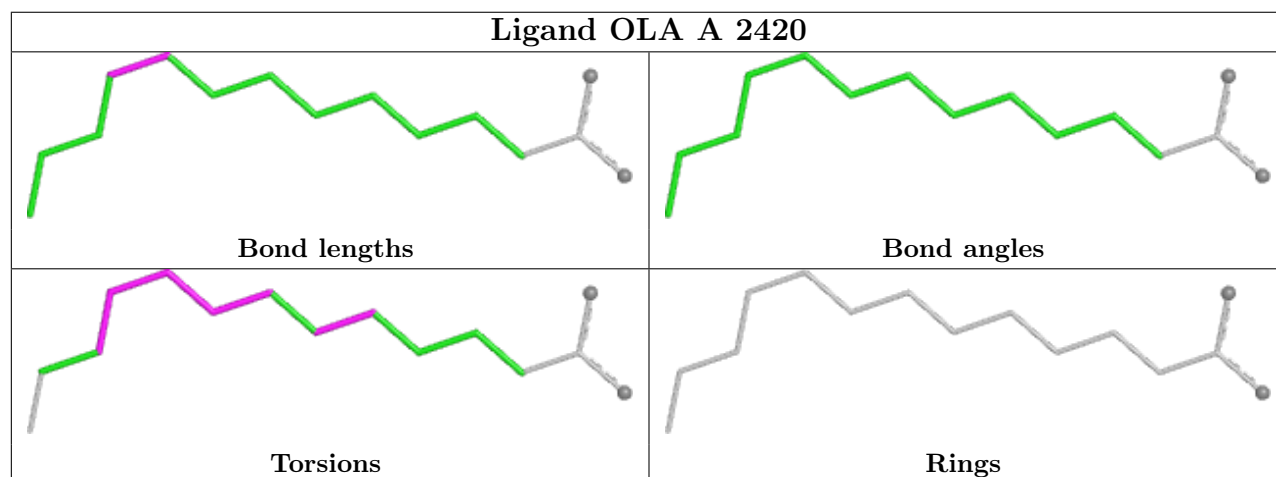
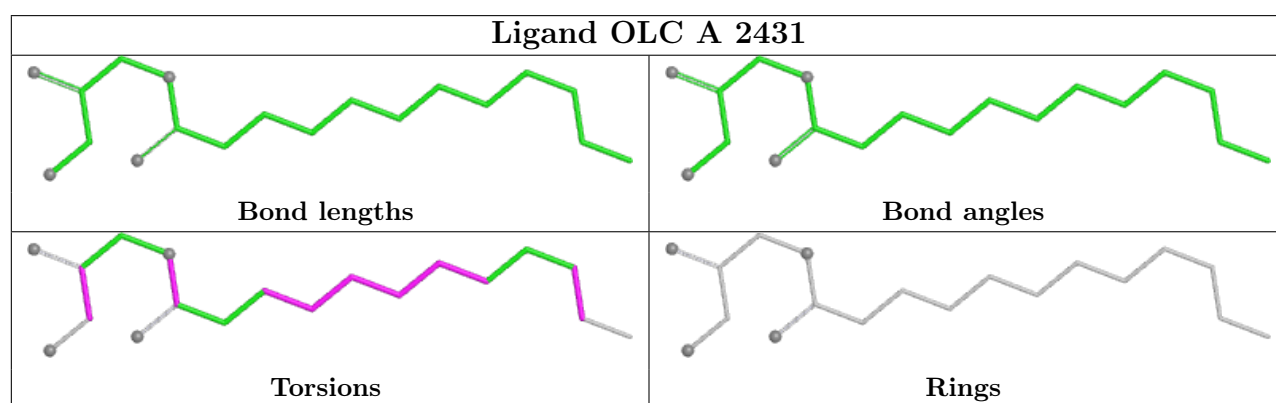
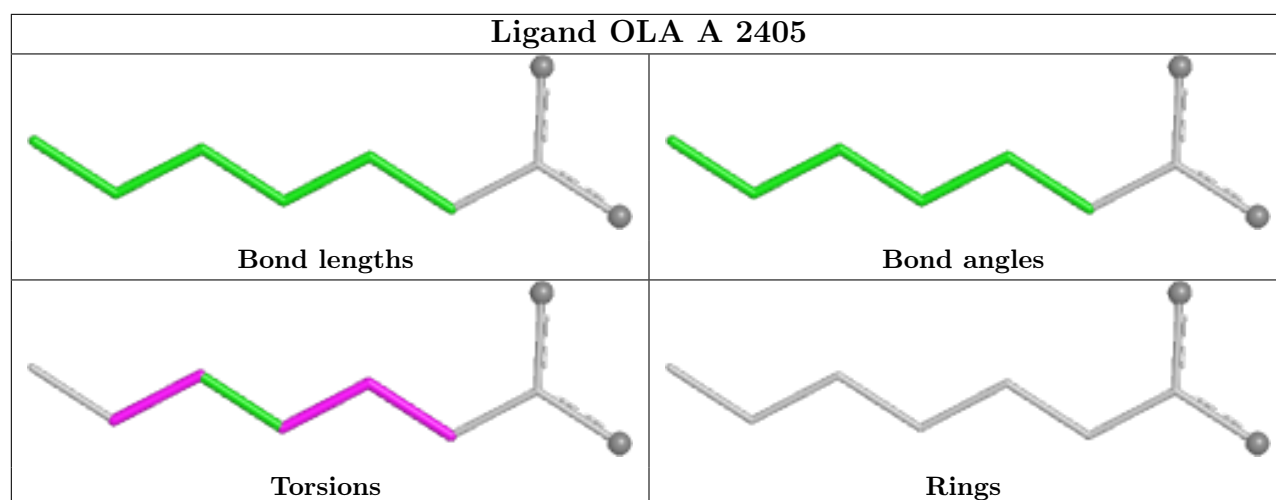


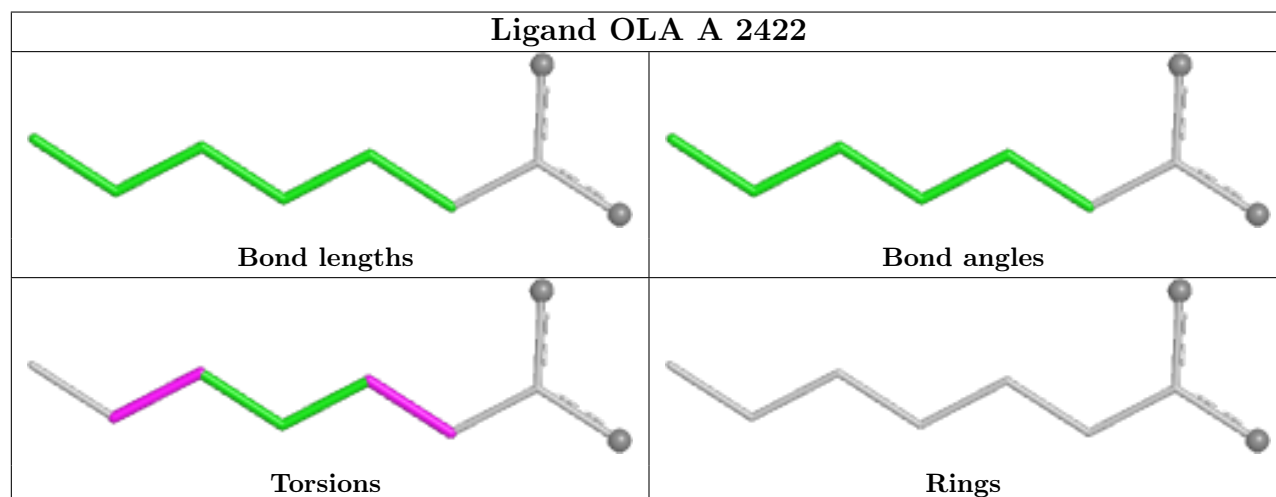
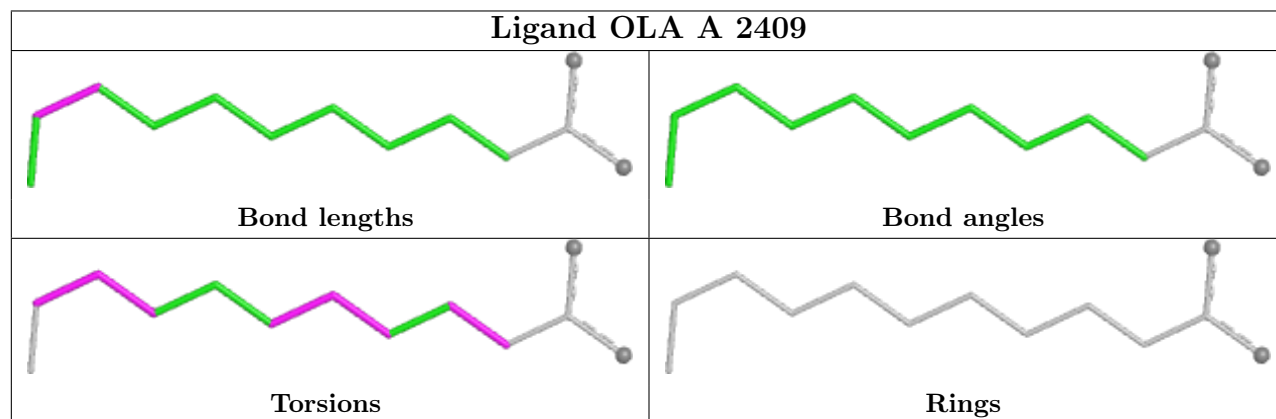
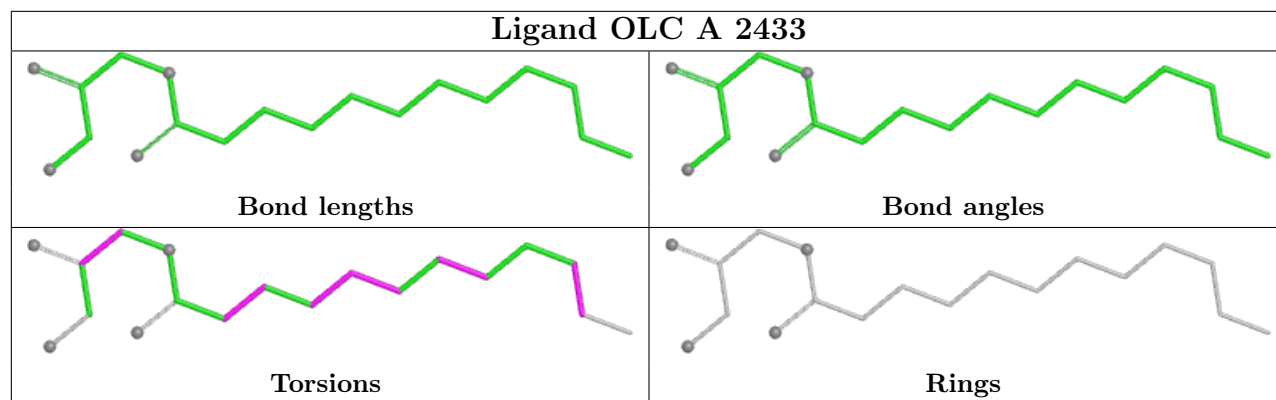


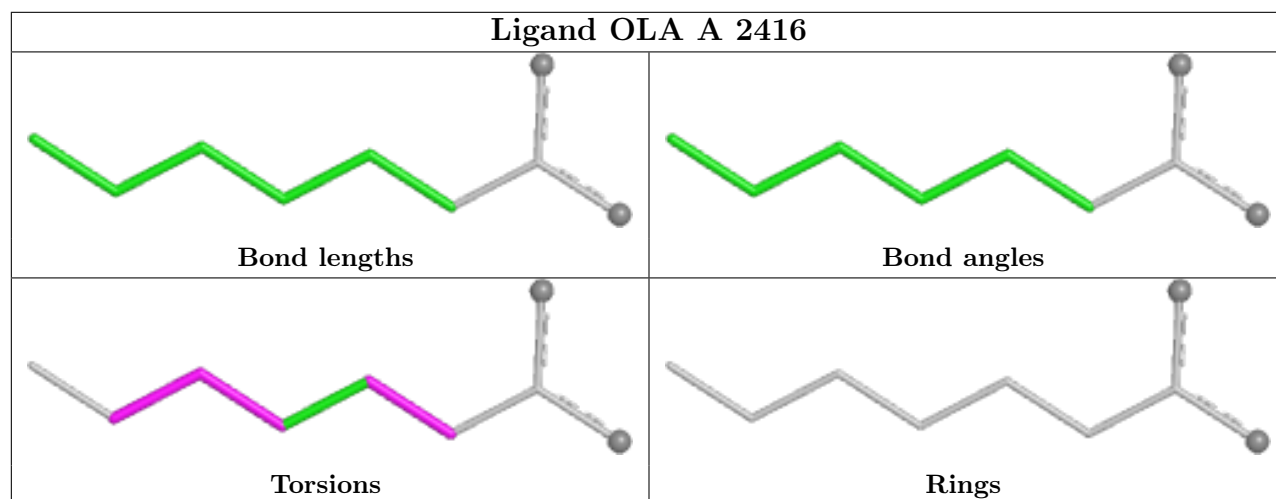
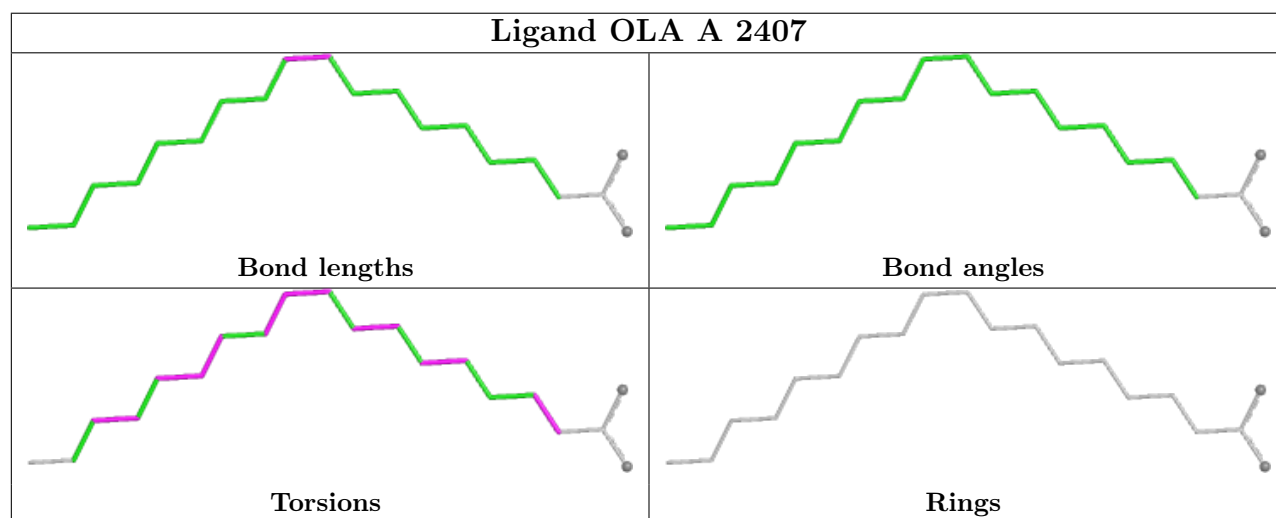
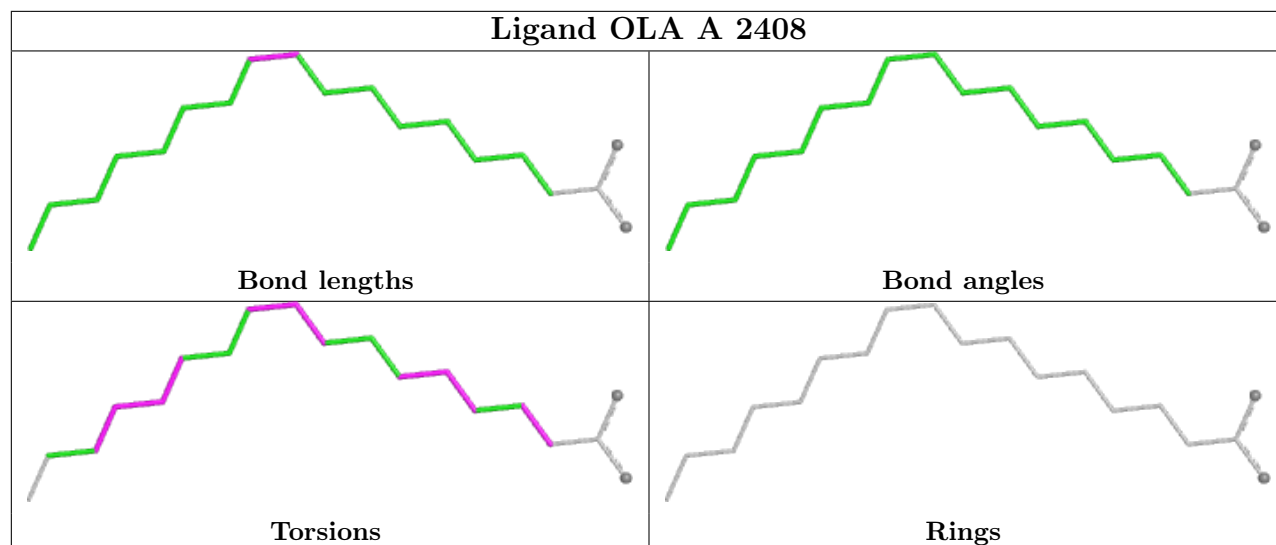


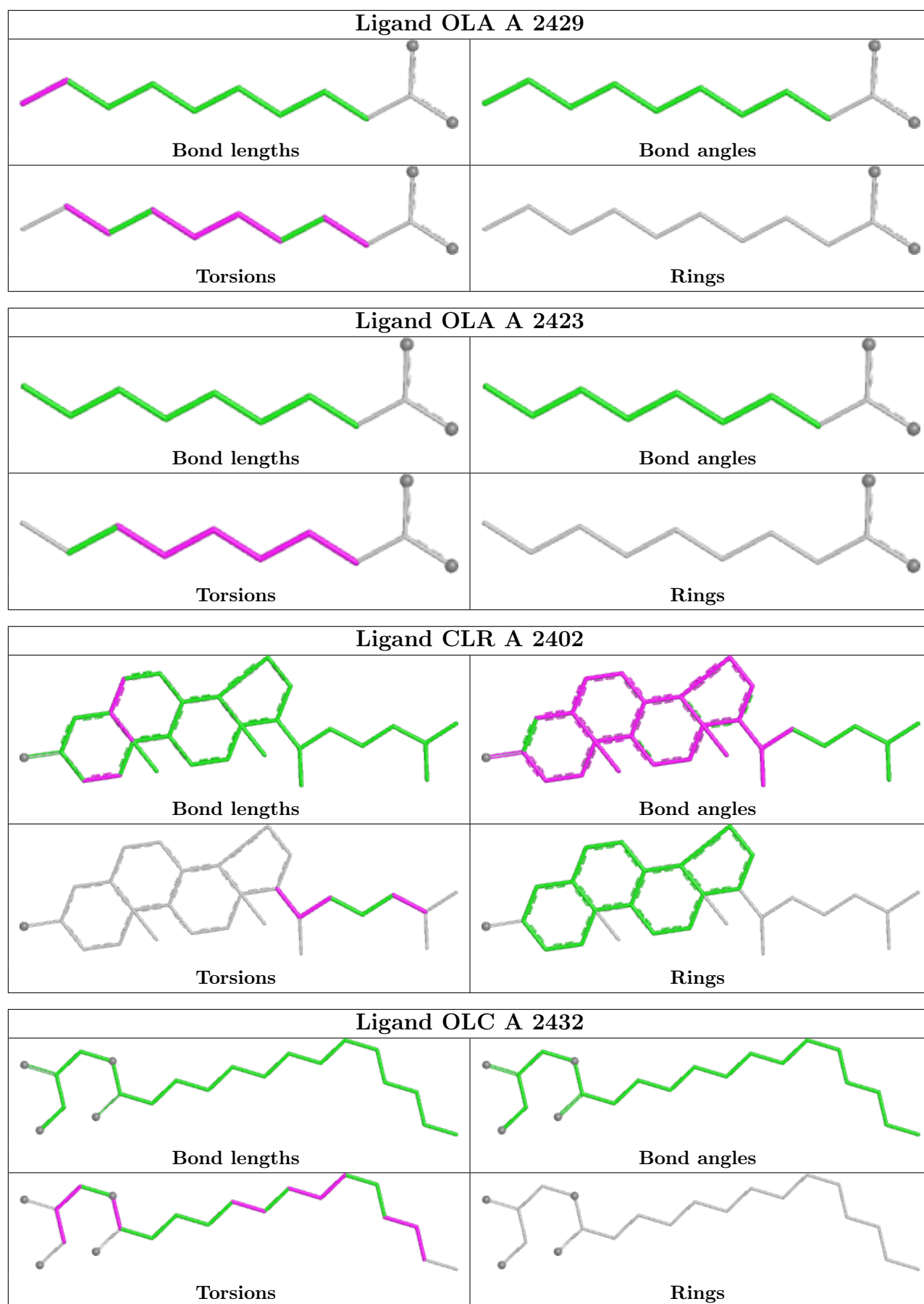


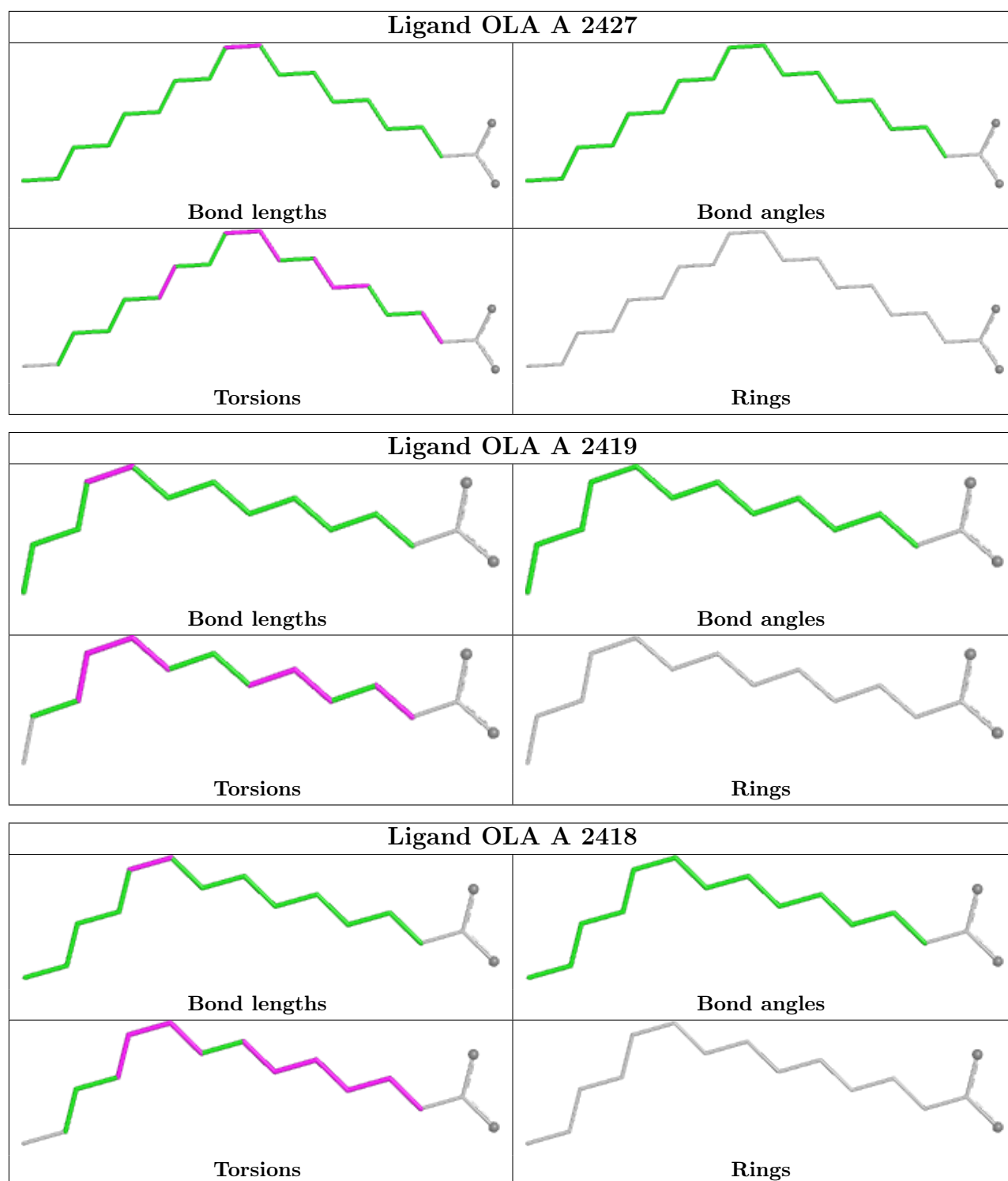












5.7 Other polymers [\(i\)](#)

There are no such residues in this entry.

5.8 Polymer linkage issues

There are no chain breaks in this entry.

6 Fit of model and data [i](#)

6.1 Protein, DNA and RNA chains [i](#)

In the following table, the column labelled '#RSRZ > 2' contains the number (and percentage) of RSRZ outliers, followed by percent RSRZ outliers for the chain as percentile scores relative to all X-ray entries and entries of similar resolution. The OWAB column contains the minimum, median, 95th percentile and maximum values of the occupancy-weighted average B-factor per residue. The column labelled 'Q < 0.9' lists the number of (and percentage) of residues with an average occupancy less than 0.9.

Mol	Chain	Analysed	<RSRZ>	#RSRZ>2	OWAB(Å ²)	Q<0.9
1	A	390/447 (87%)	0.17	31 (7%) 12 9	23, 41, 92, 111	0

The worst 5 of 31 RSRZ outliers are listed below:

Mol	Chain	Res	Type	RSRZ
1	A	1060	ASP	8.3
1	A	1061	PHE	7.0
1	A	1017	ILE	6.0
1	A	1063	HIS	4.9
1	A	1059	LYS	4.6

6.2 Non-standard residues in protein, DNA, RNA chains [i](#)

There are no non-standard protein/DNA/RNA residues in this entry.

6.3 Carbohydrates [i](#)

There are no monosaccharides in this entry.

6.4 Ligands [i](#)

In the following table, the Atoms column lists the number of modelled atoms in the group and the number defined in the chemical component dictionary. The B-factors column lists the minimum, median, 95th percentile and maximum values of B factors of atoms in the group. The column labelled 'Q < 0.9' lists the number of atoms with occupancy less than 0.9.

Mol	Type	Chain	Res	Atoms	RSCC	RSR	B-factors(Å ²)	Q<0.9
4	OLA	A	2414	12/20	0.62	0.32	48,60,104,105	0
4	OLA	A	2428	14/20	0.64	0.51	53,74,97,97	0

Continued on next page...

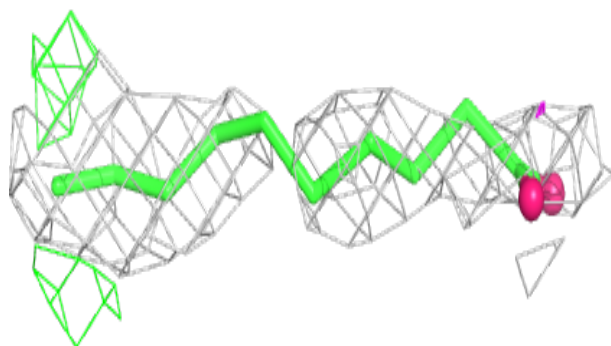
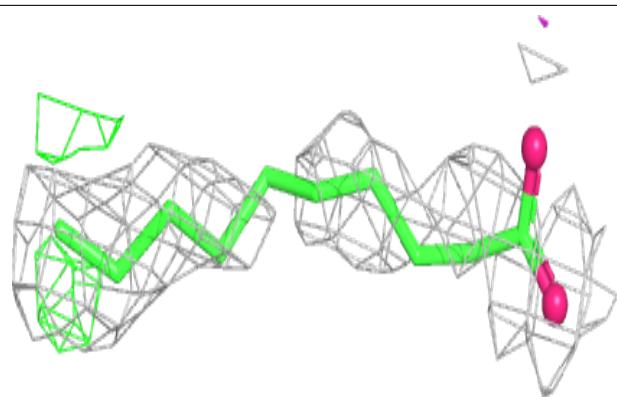
Continued from previous page...

Mol	Type	Chain	Res	Atoms	RSCC	RSR	B-factors(\AA^2)	Q<0.9
4	OLA	A	2413	13/20	0.66	0.27	65,81,97,107	0
4	OLA	A	2420	15/20	0.67	0.34	43,61,77,77	0
4	OLA	A	2423	11/20	0.70	0.54	35,64,71,75	0
4	OLA	A	2424	11/20	0.72	0.26	54,67,76,83	0
4	OLA	A	2411	16/20	0.73	0.29	41,57,65,73	0
6	PEG	A	2434	7/7	0.73	0.20	75,79,85,87	0
4	OLA	A	2416	9/20	0.74	0.27	47,66,74,79	0
4	OLA	A	2429	12/20	0.75	0.35	49,68,82,91	0
5	OLC	A	2432	21/25	0.76	0.29	50,64,79,91	0
4	OLA	A	2406	11/20	0.76	0.28	44,51,79,85	0
4	OLA	A	2409	13/20	0.77	0.24	52,67,81,87	0
4	OLA	A	2427	20/20	0.78	0.31	52,67,84,88	0
4	OLA	A	2415	20/20	0.79	0.33	60,71,88,102	0
5	OLC	A	2430	25/25	0.79	0.28	54,69,93,101	0
4	OLA	A	2421	14/20	0.81	0.24	55,61,85,92	0
4	OLA	A	2412	12/20	0.81	0.47	52,62,74,74	0
4	OLA	A	2419	15/20	0.81	0.25	61,73,85,85	0
4	OLA	A	2425	15/20	0.81	0.28	43,57,66,67	0
4	OLA	A	2410	7/20	0.81	0.22	50,53,65,74	0
5	OLC	A	2433	19/25	0.82	0.21	44,56,84,89	0
4	OLA	A	2405	9/20	0.82	0.24	48,51,54,73	0
5	OLC	A	2431	19/25	0.83	0.36	47,64,73,80	0
4	OLA	A	2418	16/20	0.83	0.24	58,62,83,92	0
4	OLA	A	2407	20/20	0.84	0.28	42,50,90,99	0
4	OLA	A	2408	19/20	0.86	0.27	49,54,94,96	0
4	OLA	A	2426	14/20	0.86	0.22	47,62,74,74	0
6	PEG	A	2435	7/7	0.87	0.15	76,80,92,95	0
2	CLR	A	2403	28/28	0.89	0.20	47,55,65,81	0
4	OLA	A	2417	11/20	0.90	0.25	44,47,69,71	0
4	OLA	A	2422	9/20	0.92	0.17	33,51,68,83	0
3	8IM	A	2404	50/76	0.93	0.19	31,38,86,96	0
2	CLR	A	2402	28/28	0.93	0.20	32,44,53,55	0
2	CLR	A	2401	28/28	0.95	0.16	37,44,55,65	0

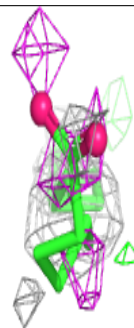
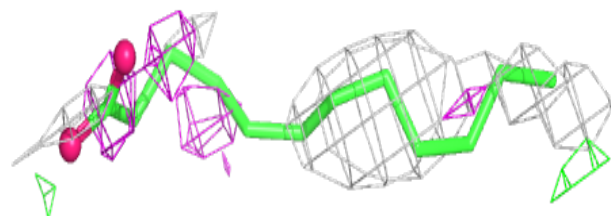
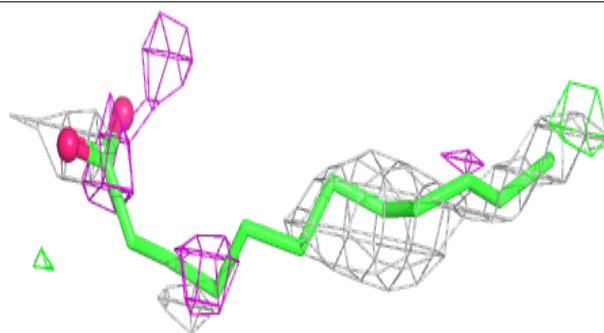
The following is a graphical depiction of the model fit to experimental electron density of all instances of the Ligand of Interest. In addition, ligands with molecular weight > 250 and outliers as shown on the geometry validation Tables will also be included. Each fit is shown from different orientation to approximate a three-dimensional view.

Electron density around OLA A 2414:

$2mF_o-DF_c$ (at 0.7 rmsd) in gray
 mF_o-DF_c (at 3 rmsd) in purple (negative)
and green (positive)

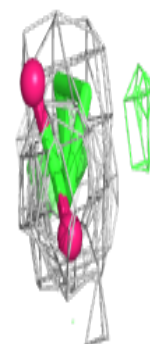
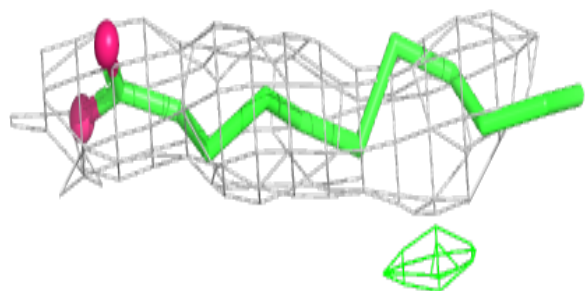
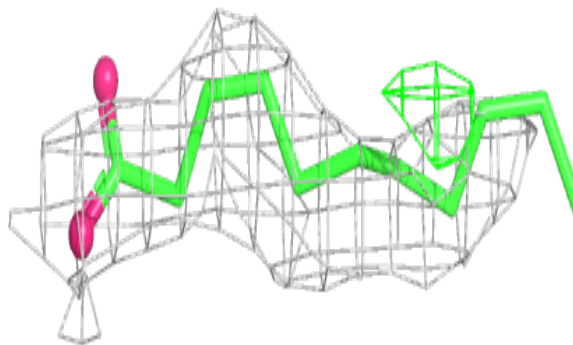
**Electron density around OLA A 2428:**

$2mF_o-DF_c$ (at 0.7 rmsd) in gray
 mF_o-DF_c (at 3 rmsd) in purple (negative)
and green (positive)

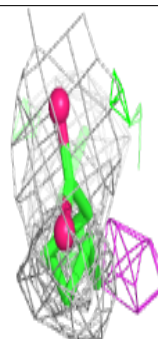
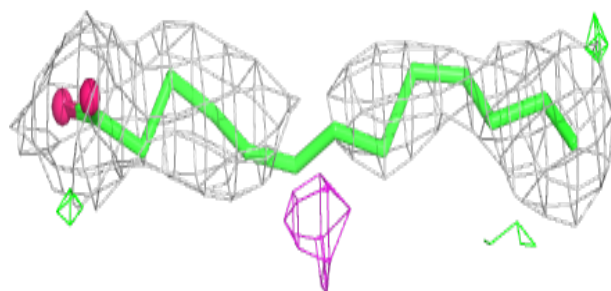
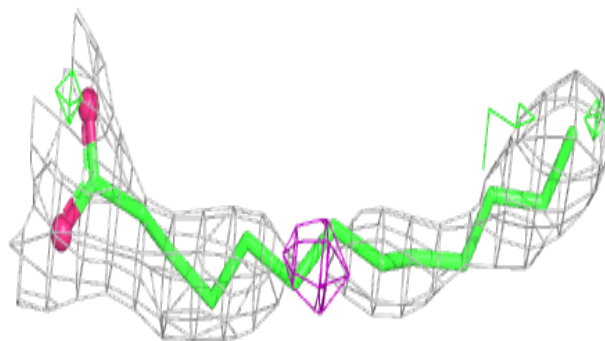


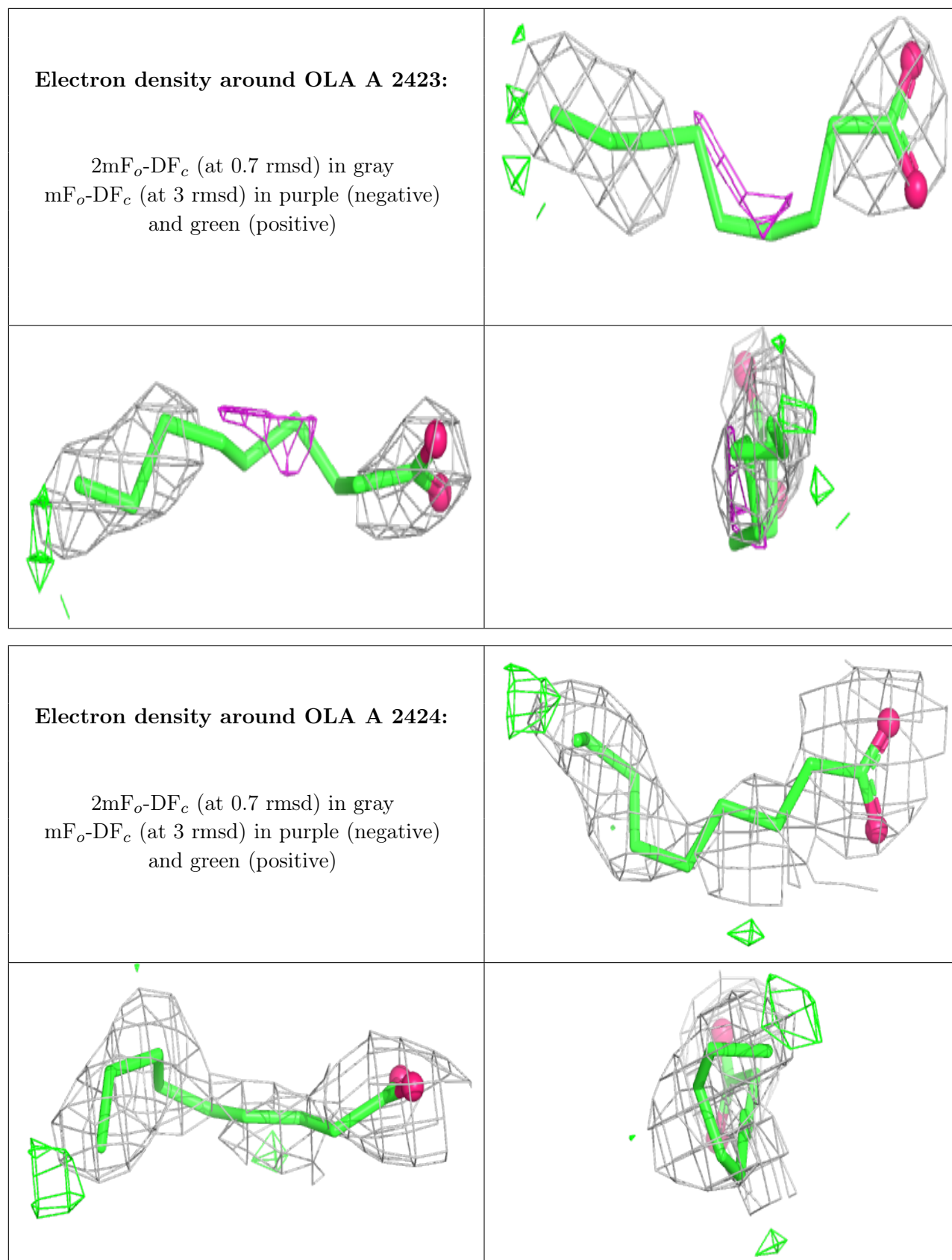
Electron density around OLA A 2413:

$2mF_o-DF_c$ (at 0.7 rmsd) in gray
 mF_o-DF_c (at 3 rmsd) in purple (negative)
and green (positive)

**Electron density around OLA A 2420:**

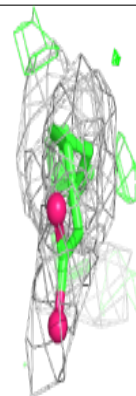
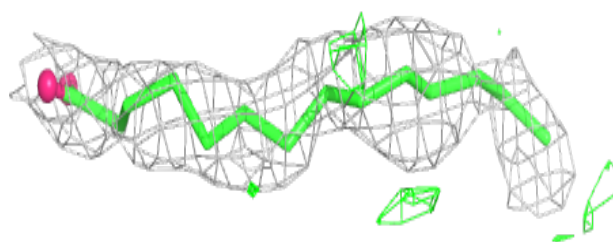
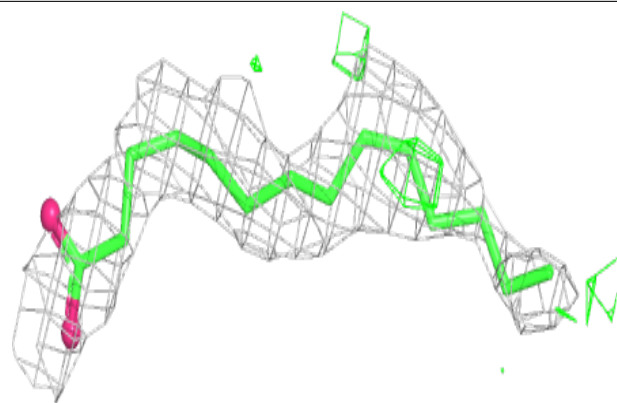
$2mF_o-DF_c$ (at 0.7 rmsd) in gray
 mF_o-DF_c (at 3 rmsd) in purple (negative)
and green (positive)



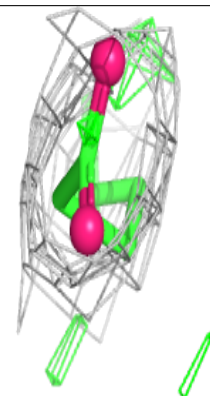
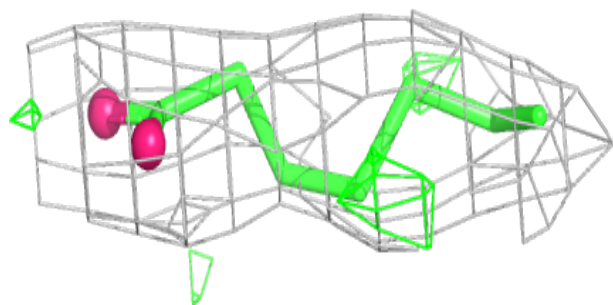
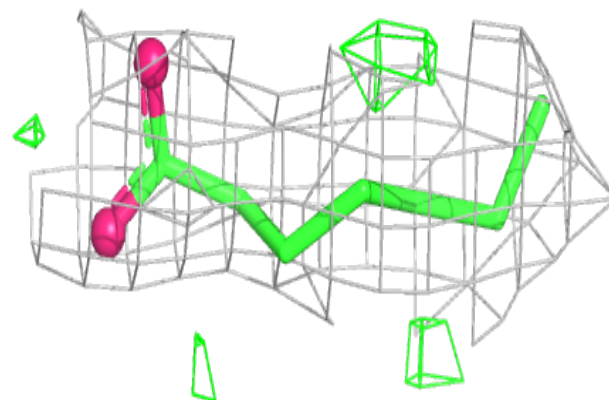


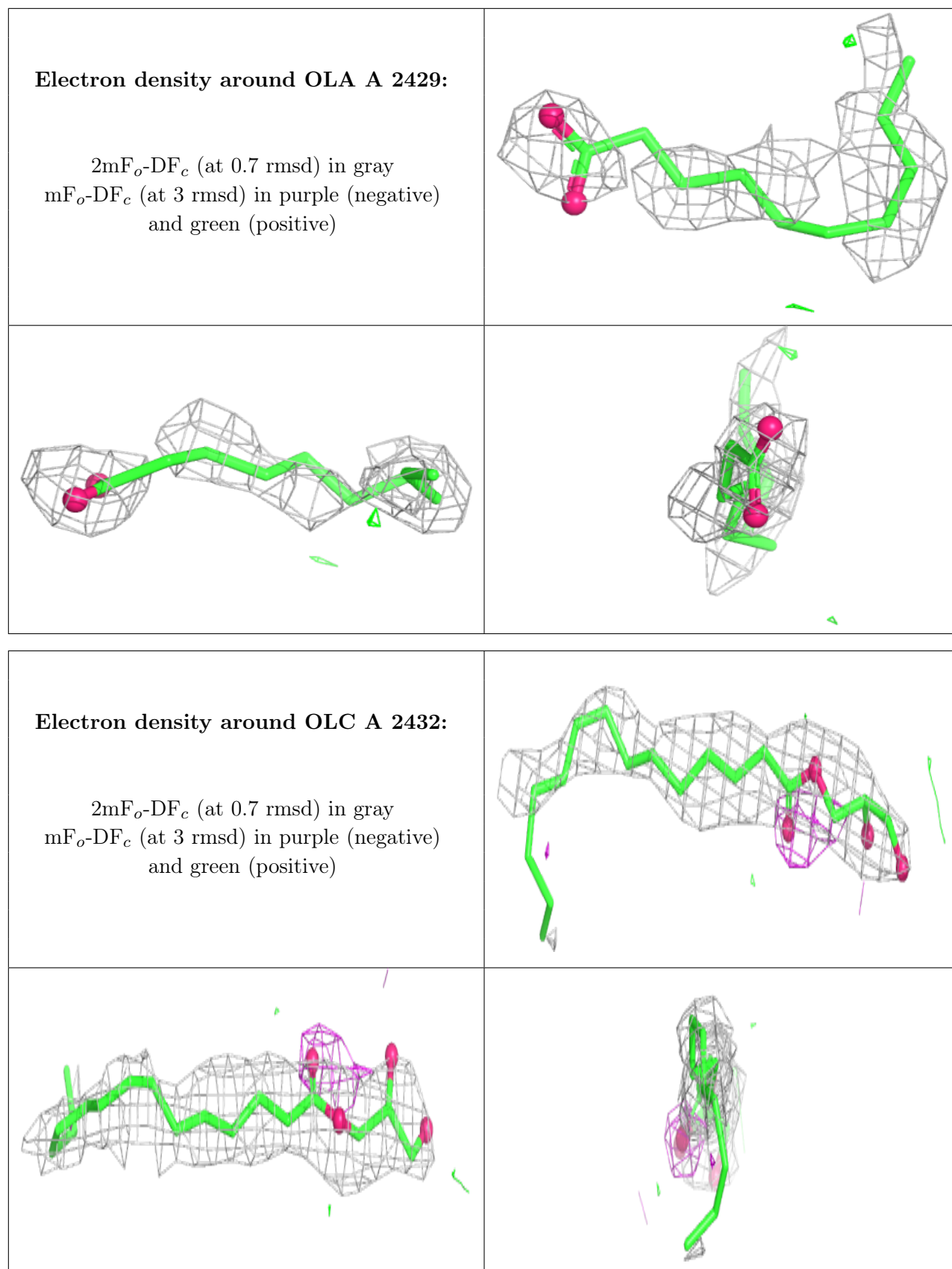
Electron density around OLA A 2411:

$2mF_o-DF_c$ (at 0.7 rmsd) in gray
 mF_o-DF_c (at 3 rmsd) in purple (negative)
and green (positive)

**Electron density around OLA A 2416:**

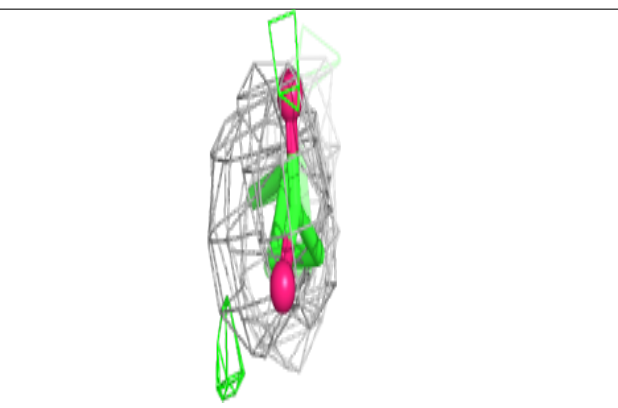
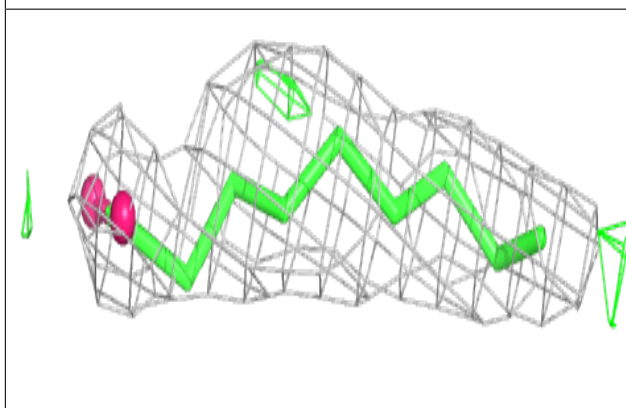
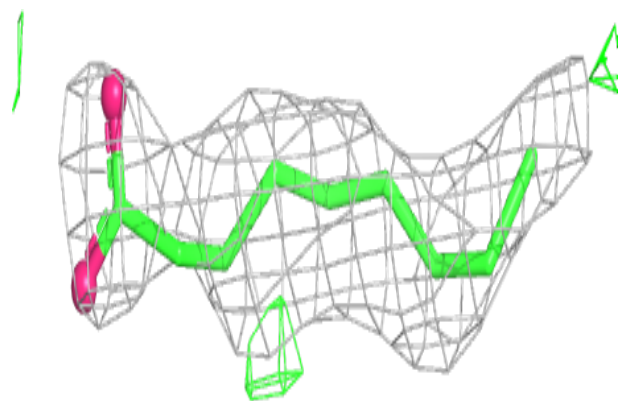
$2mF_o-DF_c$ (at 0.7 rmsd) in gray
 mF_o-DF_c (at 3 rmsd) in purple (negative)
and green (positive)



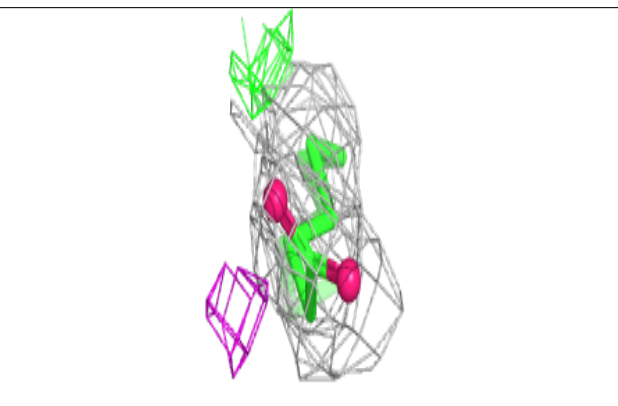
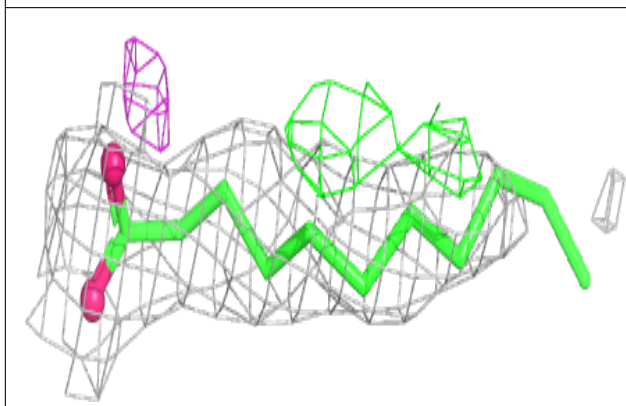
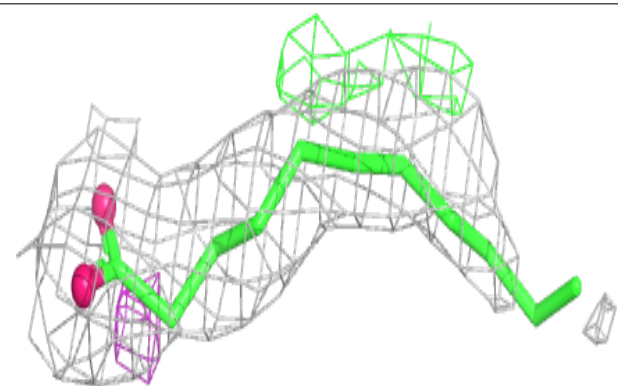


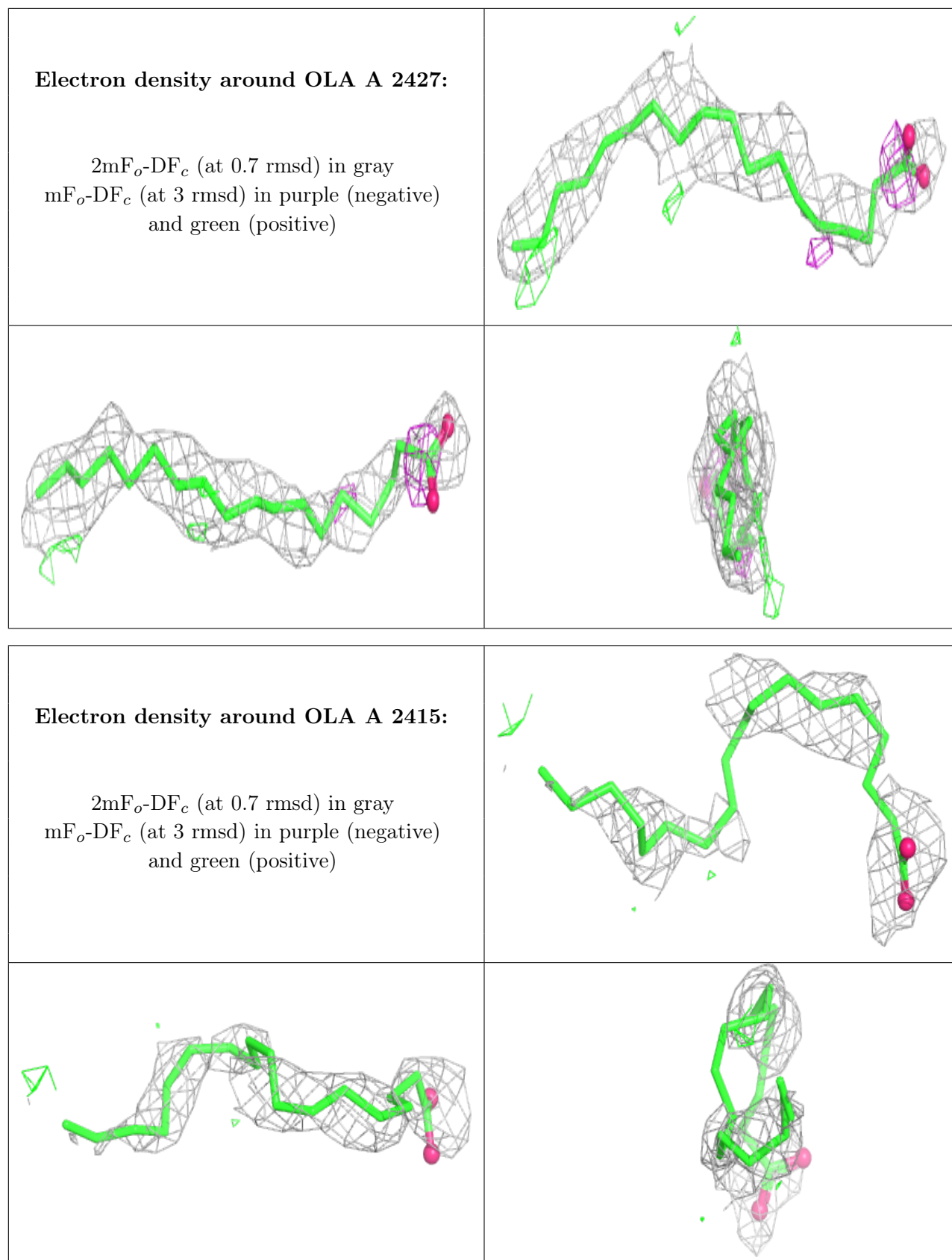
Electron density around OLA A 2406:

$2mF_o-DF_c$ (at 0.7 rmsd) in gray
 mF_o-DF_c (at 3 rmsd) in purple (negative)
and green (positive)

**Electron density around OLA A 2409:**

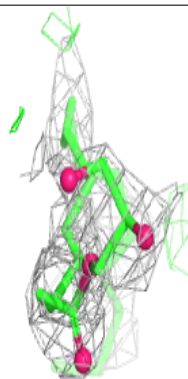
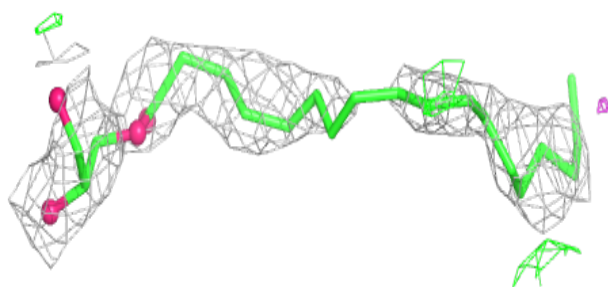
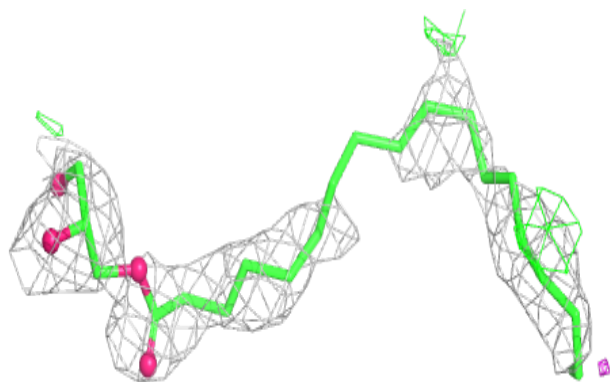
$2mF_o-DF_c$ (at 0.7 rmsd) in gray
 mF_o-DF_c (at 3 rmsd) in purple (negative)
and green (positive)



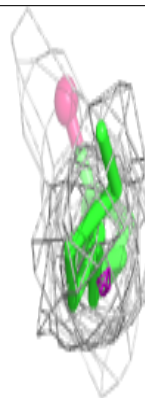
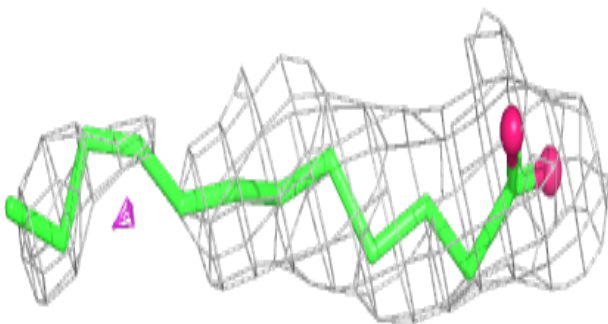
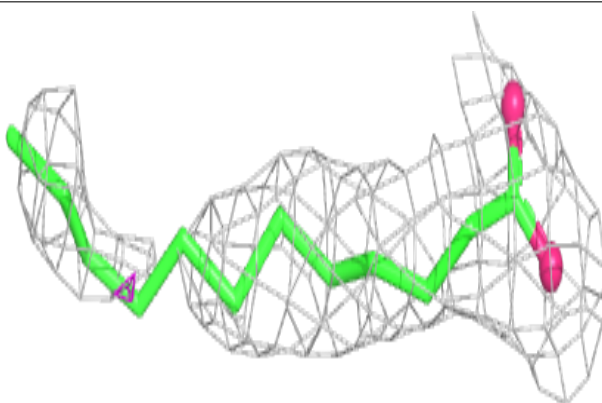


Electron density around OLC A 2430:

$2mF_o-DF_c$ (at 0.7 rmsd) in gray
 mF_o-DF_c (at 3 rmsd) in purple (negative)
and green (positive)

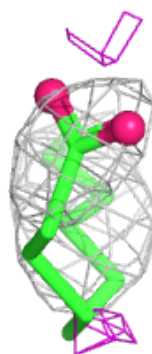
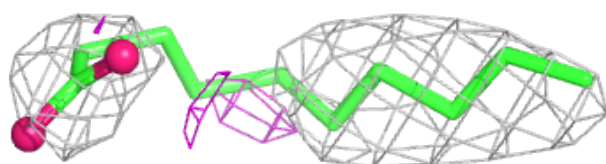
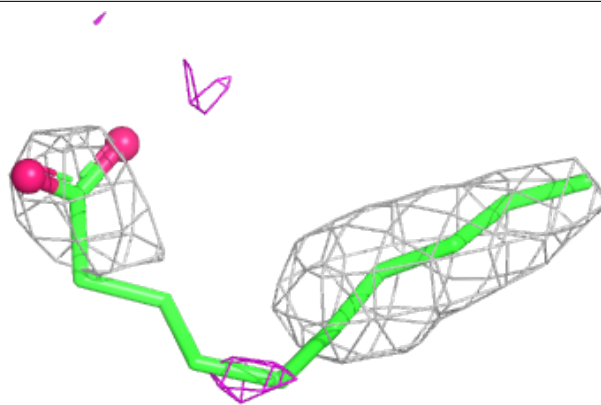
**Electron density around OLA A 2421:**

$2mF_o-DF_c$ (at 0.7 rmsd) in gray
 mF_o-DF_c (at 3 rmsd) in purple (negative)
and green (positive)

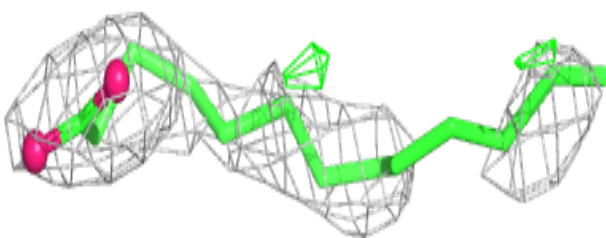
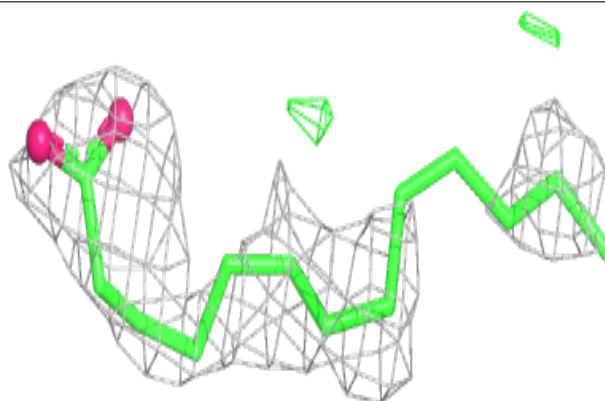


Electron density around OLA A 2412:

$2mF_o-DF_c$ (at 0.7 rmsd) in gray
 mF_o-DF_c (at 3 rmsd) in purple (negative)
and green (positive)

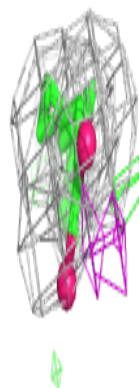
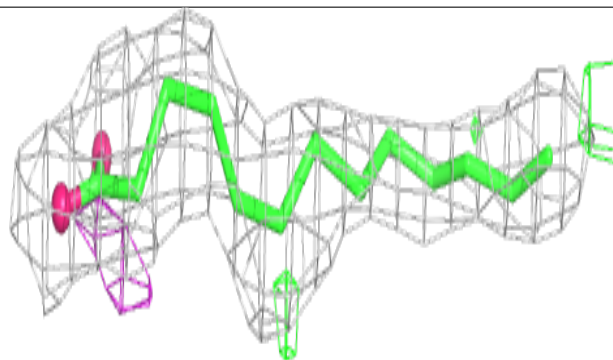
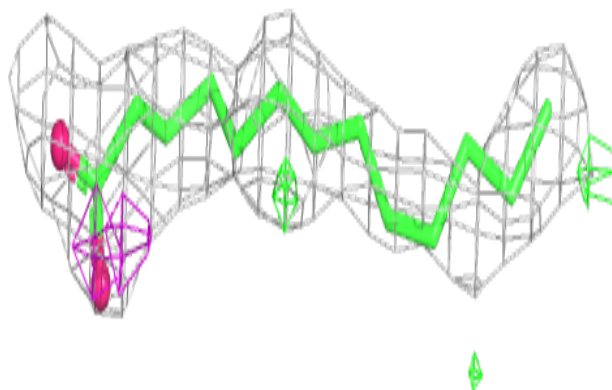
**Electron density around OLA A 2419:**

$2mF_o-DF_c$ (at 0.7 rmsd) in gray
 mF_o-DF_c (at 3 rmsd) in purple (negative)
and green (positive)

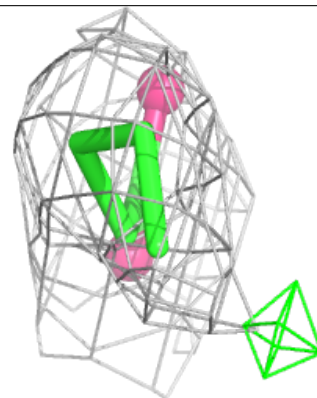
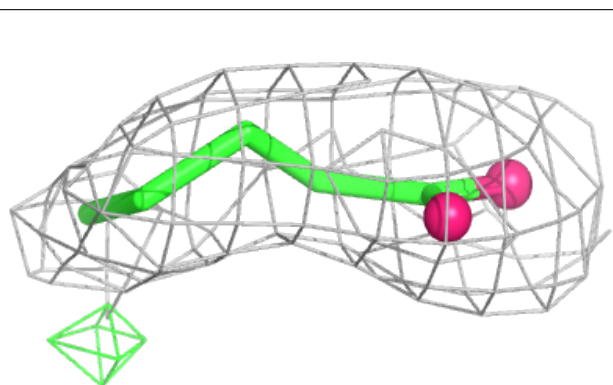
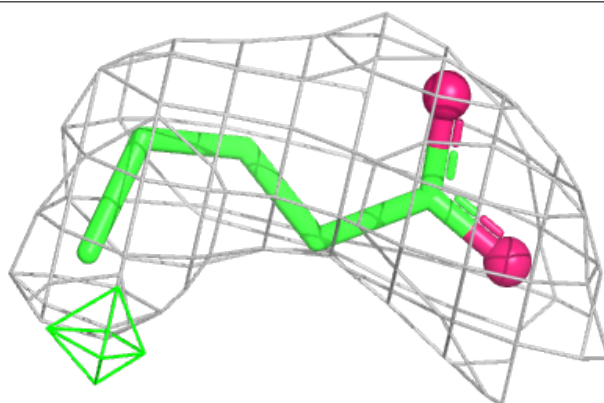


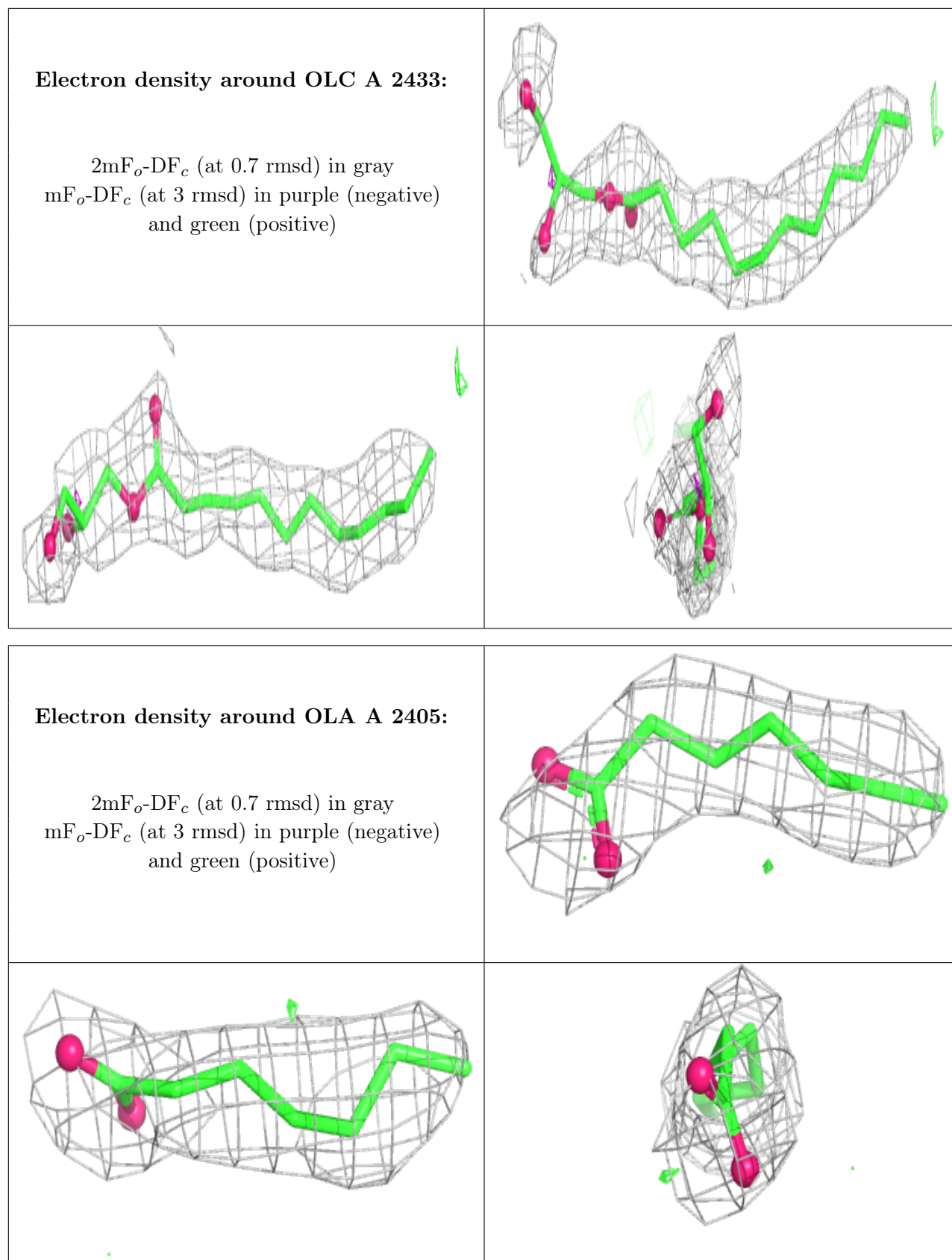
Electron density around OLA A 2425:

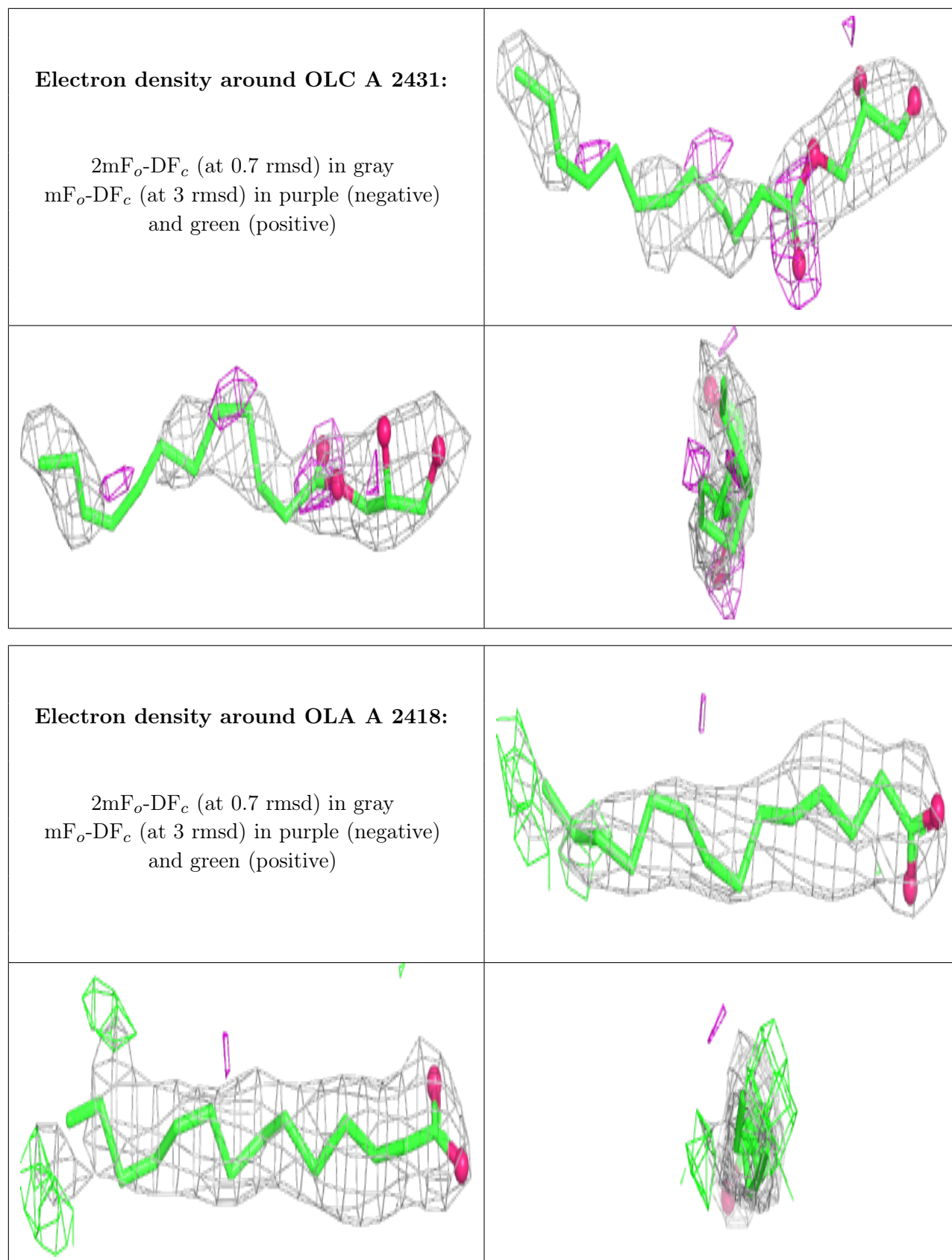
$2mF_o-DF_c$ (at 0.7 rmsd) in gray
 mF_o-DF_c (at 3 rmsd) in purple (negative)
and green (positive)

**Electron density around OLA A 2410:**

$2mF_o-DF_c$ (at 0.7 rmsd) in gray
 mF_o-DF_c (at 3 rmsd) in purple (negative)
and green (positive)

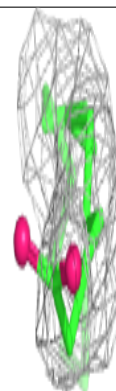
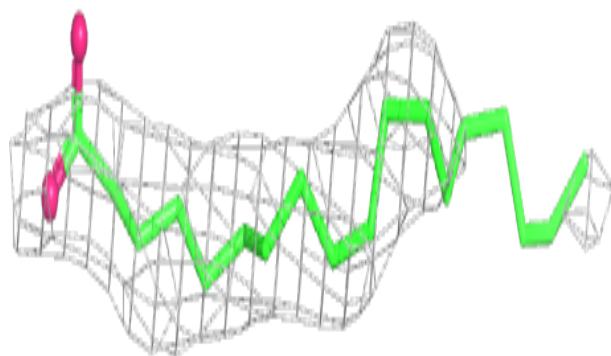
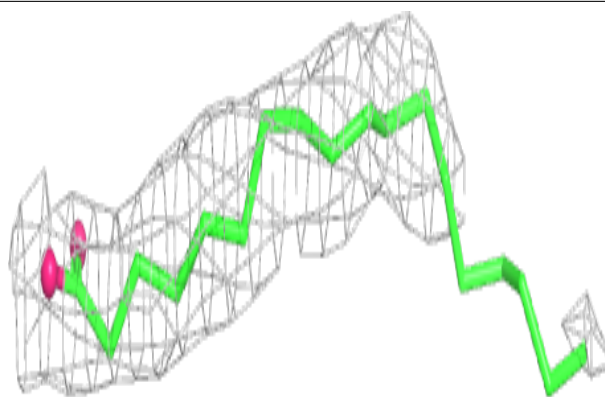




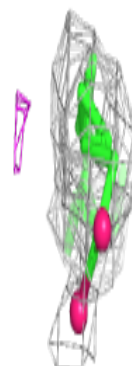
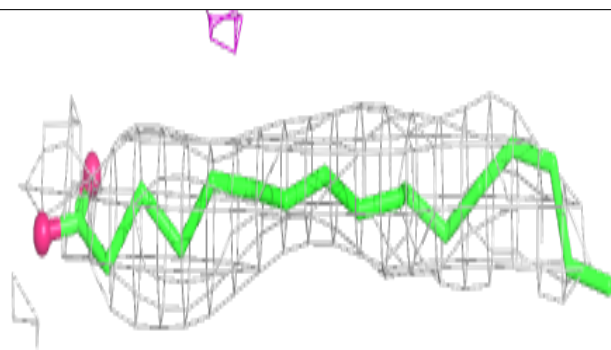
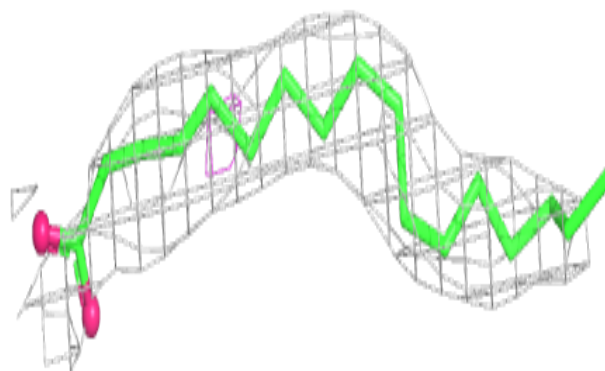


Electron density around OLA A 2407:

$2mF_o-DF_c$ (at 0.7 rmsd) in gray
 mF_o-DF_c (at 3 rmsd) in purple (negative)
and green (positive)

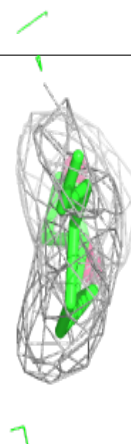
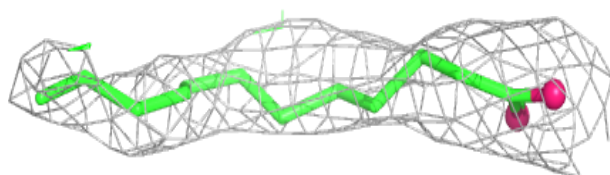
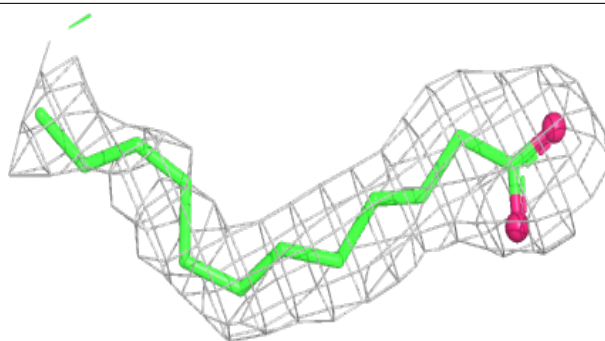
**Electron density around OLA A 2408:**

$2mF_o-DF_c$ (at 0.7 rmsd) in gray
 mF_o-DF_c (at 3 rmsd) in purple (negative)
and green (positive)

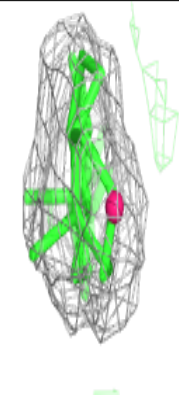
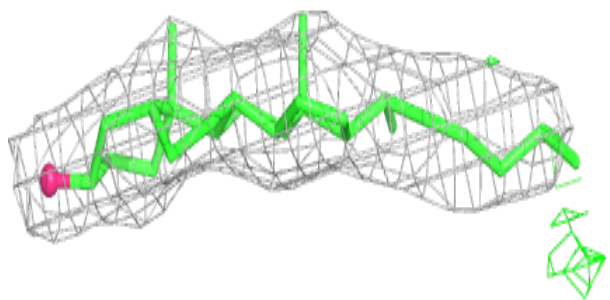
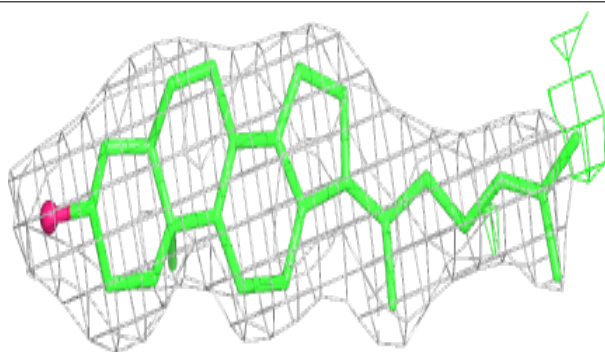


Electron density around OLA A 2426:

$2mF_o-DF_c$ (at 0.7 rmsd) in gray
 mF_o-DF_c (at 3 rmsd) in purple (negative)
and green (positive)

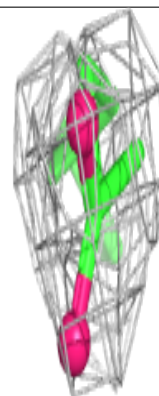
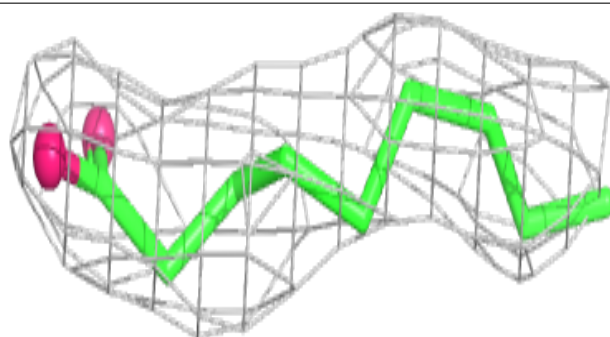
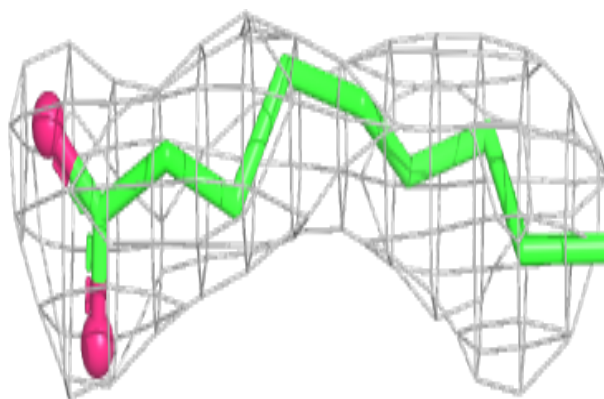
**Electron density around CLR A 2403:**

$2mF_o-DF_c$ (at 0.7 rmsd) in gray
 mF_o-DF_c (at 3 rmsd) in purple (negative)
and green (positive)

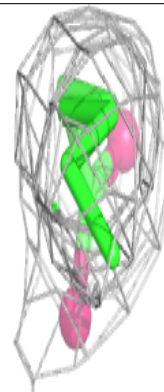
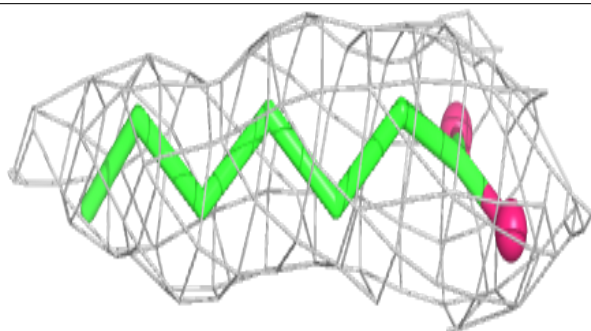
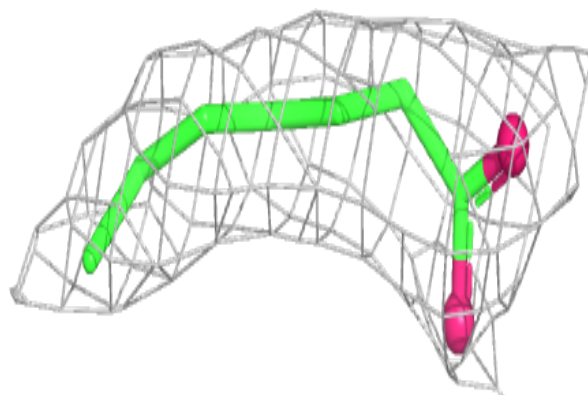


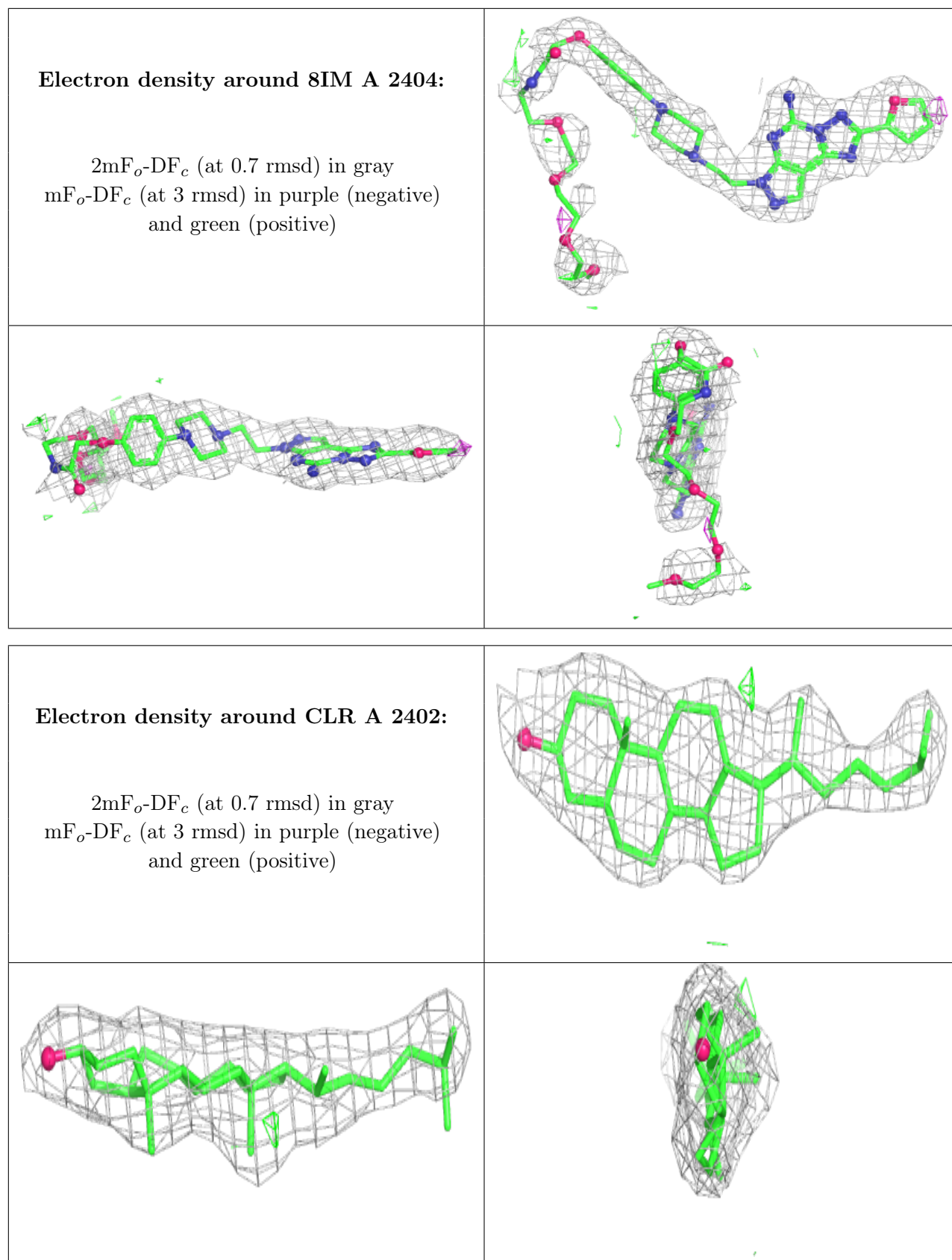
Electron density around OLA A 2417:

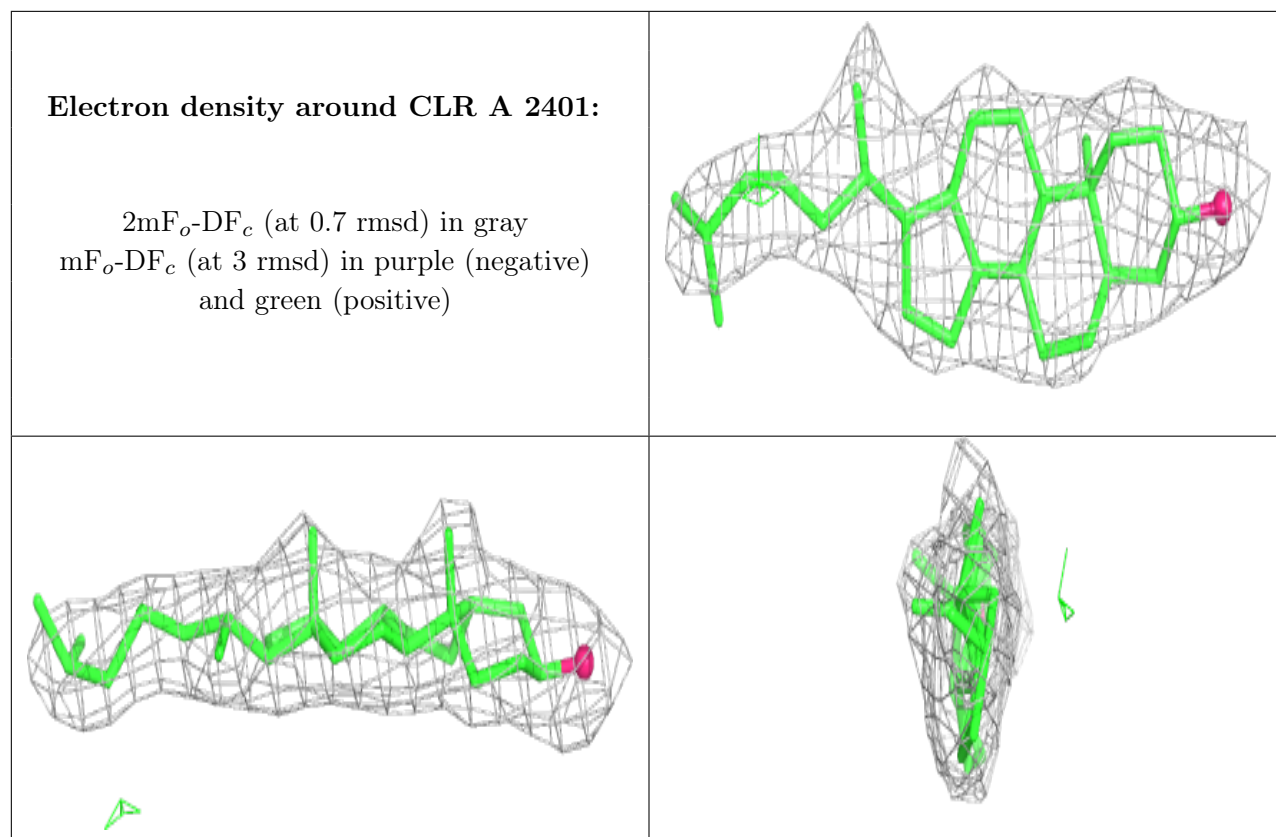
$2mF_o-DF_c$ (at 0.7 rmsd) in gray
 mF_o-DF_c (at 3 rmsd) in purple (negative)
and green (positive)

**Electron density around OLA A 2422:**

$2mF_o-DF_c$ (at 0.7 rmsd) in gray
 mF_o-DF_c (at 3 rmsd) in purple (negative)
and green (positive)







6.5 Other polymers [i](#)

There are no such residues in this entry.