



Full wwPDB X-ray Structure Validation Report ⓘ

Oct 16, 2023 – 04:10 pm BST

PDB ID : 8PZ4
Title : Structure of alginate transporter, AlgE, solved at wavelength 2.755 Å
Authors : Duman, R.; El Omari, K.; Mykhaylyk, V.; Orr, C.; Wagner, A.; Vogeley, L.;
Brown, D.G.
Deposited on : 2023-07-26
Resolution : 1.77 Å (reported)

This is a Full wwPDB X-ray Structure Validation Report for a publicly released PDB entry.

We welcome your comments at validation@mail.wwpdb.org

A user guide is available at

<https://www.wwpdb.org/validation/2017/XrayValidationReportHelp>

with specific help available everywhere you see the ⓘ symbol.

The types of validation reports are described at

<http://www.wwpdb.org/validation/2017/FAQs#types>.

The following versions of software and data (see [references ⓘ](#)) were used in the production of this report:

MolProbity : 4.02b-467
Mogul : 1.8.4, CSD as541be (2020)
Xtriage (Phenix) : 1.13
EDS : 2.36
buster-report : 1.1.7 (2018)
Percentile statistics : 20191225.v01 (using entries in the PDB archive December 25th 2019)
Refmac : 5.8.0158
CCP4 : 7.0.044 (Gargrove)
Ideal geometry (proteins) : Engh & Huber (2001)
Ideal geometry (DNA, RNA) : Parkinson et al. (1996)
Validation Pipeline (wwPDB-VP) : 2.36

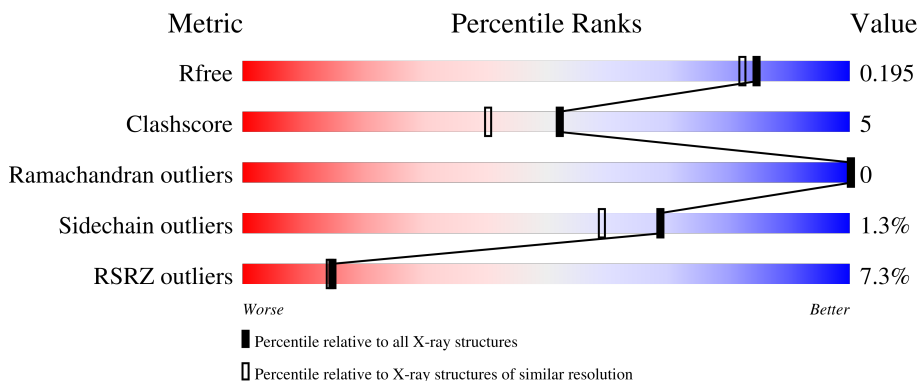
1 Overall quality at a glance

The following experimental techniques were used to determine the structure:

X-RAY DIFFRACTION

The reported resolution of this entry is 1.77 Å.

Percentile scores (ranging between 0-100) for global validation metrics of the entry are shown in the following graphic. The table shows the number of entries on which the scores are based.



Metric	Whole archive (#Entries)	Similar resolution (#Entries, resolution range(Å))
R_{free}	130704	9185 (1.80-1.76)
Clashscore	141614	10184 (1.80-1.76)
Ramachandran outliers	138981	10051 (1.80-1.76)
Sidechain outliers	138945	10050 (1.80-1.76)
RSRZ outliers	127900	9032 (1.80-1.76)

The table below summarises the geometric issues observed across the polymeric chains and their fit to the electron density. The red, orange, yellow and green segments of the lower bar indicate the fraction of residues that contain outliers for ≥ 3 , 2, 1 and 0 types of geometric quality criteria respectively. A grey segment represents the fraction of residues that are not modelled. The numeric value for each fraction is indicated below the corresponding segment, with a dot representing fractions $\leq 5\%$. The upper red bar (where present) indicates the fraction of residues that have poor fit to the electron density. The numeric value is given above the bar.

Mol	Chain	Length	Quality of chain
1	A	479	

2 Entry composition [i](#)

There are 9 unique types of molecules in this entry. The entry contains 4174 atoms, of which 0 are hydrogens and 0 are deuteriums.

In the tables below, the ZeroOcc column contains the number of atoms modelled with zero occupancy, the AltConf column contains the number of residues with at least one atom in alternate conformation and the Trace column contains the number of residues modelled with at most 2 atoms.

- Molecule 1 is a protein called Alginate production protein AlgE.

Mol	Chain	Residues	Atoms					ZeroOcc	AltConf	Trace
			Total	C	N	O	S			
1	A	466	3699	2306	668	720	5	0	2	0

There are 21 discrepancies between the modelled and reference sequences:

Chain	Residue	Modelled	Actual	Comment	Reference
A	1	MET	-	initiating methionine	UNP P18895
A	2	GLY	-	expression tag	UNP P18895
A	3	SER	-	expression tag	UNP P18895
A	4	SER	-	expression tag	UNP P18895
A	5	HIS	-	expression tag	UNP P18895
A	6	HIS	-	expression tag	UNP P18895
A	7	HIS	-	expression tag	UNP P18895
A	8	HIS	-	expression tag	UNP P18895
A	9	HIS	-	expression tag	UNP P18895
A	10	HIS	-	expression tag	UNP P18895
A	11	SER	-	expression tag	UNP P18895
A	12	SER	-	expression tag	UNP P18895
A	13	GLY	-	expression tag	UNP P18895
A	14	LEU	-	expression tag	UNP P18895
A	15	VAL	-	expression tag	UNP P18895
A	16	PRO	-	expression tag	UNP P18895
A	17	ARG	-	expression tag	UNP P18895
A	18	GLY	-	expression tag	UNP P18895
A	19	SER	-	expression tag	UNP P18895
A	20	HIS	-	expression tag	UNP P18895
A	21	MET	-	expression tag	UNP P18895

- Molecule 2 is SULFATE ION (three-letter code: SO4) (formula: O₄S) (labeled as "Ligand of Interest" by depositor).

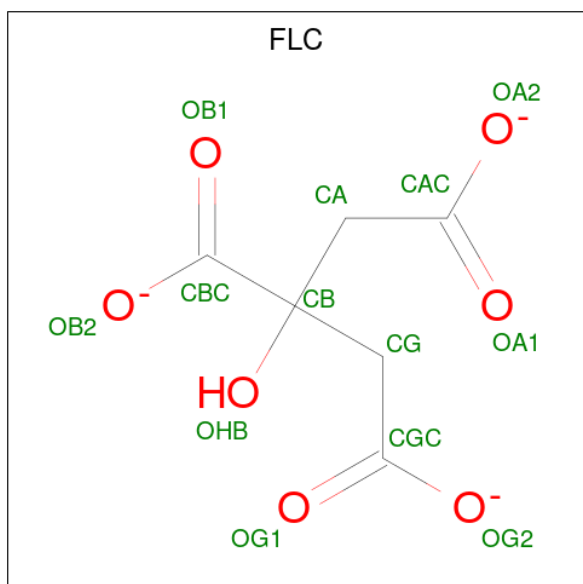


Mol	Chain	Residues	Atoms	ZeroOcc	AltConf
2	A	1	Total O S 5 4 1	0	0

- Molecule 3 is CALCIUM ION (three-letter code: CA) (formula: Ca) (labeled as "Ligand of Interest" by depositor).

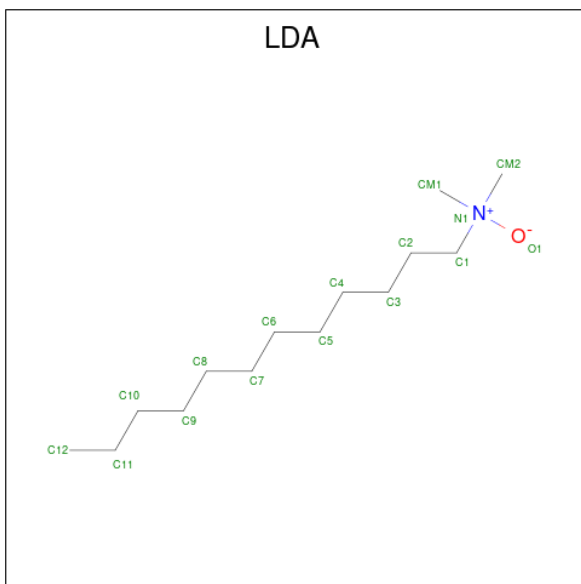
Mol	Chain	Residues	Atoms	ZeroOcc	AltConf
3	A	2	Total Ca 2 2	0	0

- Molecule 4 is CITRATE ANION (three-letter code: FLC) (formula: C₆H₅O₇) (labeled as "Ligand of Interest" by depositor).



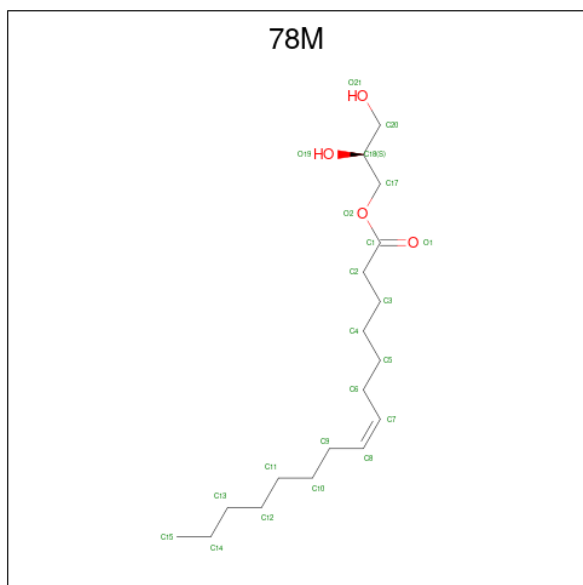
Mol	Chain	Residues	Atoms			ZeroOcc	AltConf
4	A	1	Total	C	O	0	0
			13	6	7		

- Molecule 5 is LAURYL DIMETHYLAMINE-N-OXIDE (three-letter code: LDA) (formula: $C_{14}H_{31}NO$) (labeled as "Ligand of Interest" by depositor).



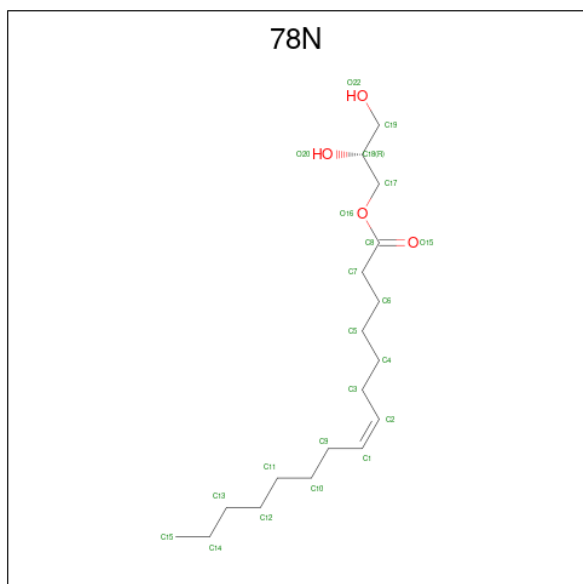
Mol	Chain	Residues	Atoms				ZeroOcc	AltConf
5	A	1	Total	C	N	O	0	0
			11	9	1	1		
5	A	1	Total	C			0	0
			12	12				
5	A	1	Total	C	N	O	0	0
			16	14	1	1		
5	A	1	Total	C			0	0
			9	9				
5	A	1	Total	C			0	0
			12	12				
5	A	1	Total	C			0	0
			9	9				
5	A	1	Total	C			0	0
			9	9				
5	A	1	Total	C			0	0
			11	11				

- Molecule 6 is (2S)-2,3-DIHYDROXYPROPYL(7Z)-PENTADEC-7-ENOATE (three-letter code: 78M) (formula: $C_{18}H_{34}O_4$) (labeled as "Ligand of Interest" by depositor).



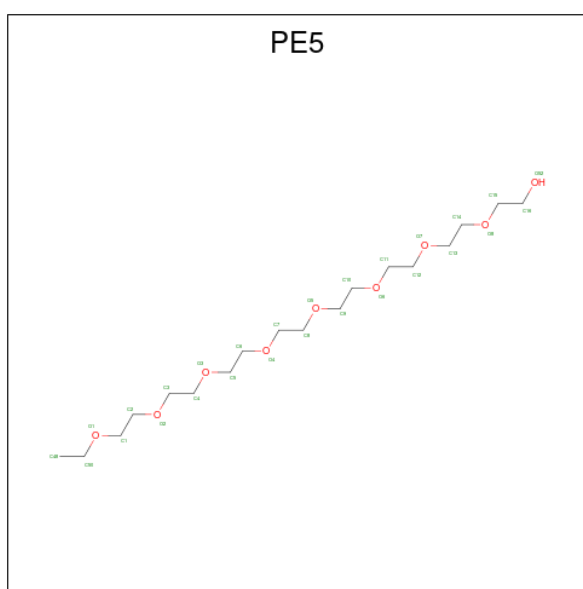
Mol	Chain	Residues	Atoms		ZeroOcc	AltConf
6	A	1	Total	C O	0	0
			22	18 4		
6	A	1	Total	C O	0	0
			22	18 4		
6	A	1	Total	C O	0	0
			22	18 4		

- Molecule 7 is (2R)-2,3-DIHYDROXYPROPYL(7Z)-PENTADEC-7-ENOATE (three-letter code: 78N) (formula: C₁₈H₃₄O₄) (labeled as "Ligand of Interest" by depositor).



Mol	Chain	Residues	Atoms			ZeroOcc	AltConf
7	A	1	Total	C	O	0	0
			22	18	4		
7	A	1	Total	C	O	0	0
			22	18	4		
7	A	1	Total	C	O	0	0
			22	18	4		
7	A	1	Total	C	O	0	0
			22	18	4		

- Molecule 8 is 3,6,9,12,15,18,21,24-OCTAOXAHEXACOSAN-1-OL (three-letter code: PE5) (formula: C₁₈H₃₈O₉) (labeled as "Ligand of Interest" by depositor).



Mol	Chain	Residues	Atoms			ZeroOcc	AltConf
8	A	1	Total	C	O	0	0
			15	10	5		
8	A	1	Total	C	O	0	0
			8	5	3		

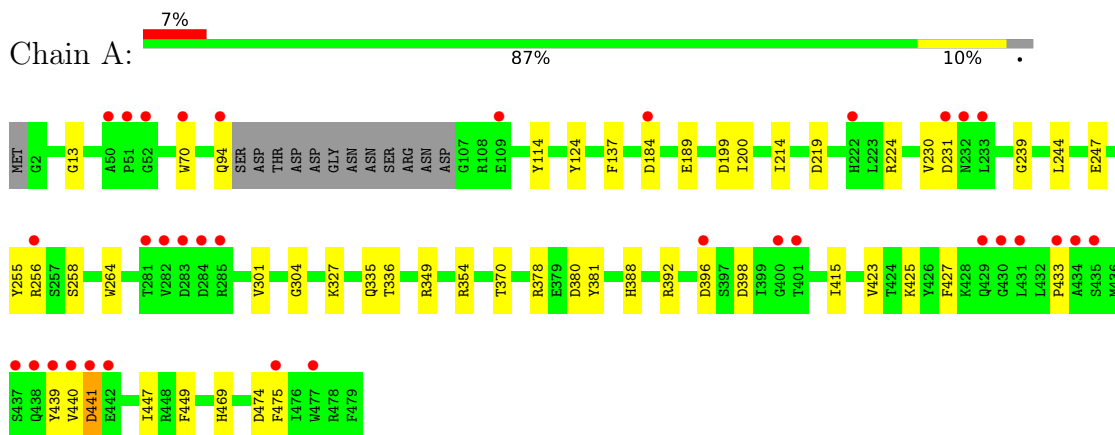
- Molecule 9 is water.

Mol	Chain	Residues	Atoms		ZeroOcc	AltConf
9	A	189	Total	O	0	0
			189	189		

3 Residue-property plots [i](#)

These plots are drawn for all protein, RNA, DNA and oligosaccharide chains in the entry. The first graphic for a chain summarises the proportions of the various outlier classes displayed in the second graphic. The second graphic shows the sequence view annotated by issues in geometry and electron density. Residues are color-coded according to the number of geometric quality criteria for which they contain at least one outlier: green = 0, yellow = 1, orange = 2 and red = 3 or more. A red dot above a residue indicates a poor fit to the electron density ($RSRZ > 2$). Stretches of 2 or more consecutive residues without any outlier are shown as a green connector. Residues present in the sample, but not in the model, are shown in grey.

- Molecule 1: Alginate production protein AlgE



4 Data and refinement statistics

Property	Value	Source
Space group	C 1 2 1	Depositor
Cell constants a, b, c, α , β , γ	57.35Å 74.69Å 115.90Å 90.00° 102.48° 90.00°	Depositor
Resolution (Å)	56.58 – 1.77 113.16 – 1.77	Depositor EDS
% Data completeness (in resolution range)	96.1 (56.58-1.77) 92.7 (113.16-1.77)	Depositor EDS
R_{merge}	(Not available)	Depositor
R_{sym}	(Not available)	Depositor
$\langle I/\sigma(I) \rangle$ ¹	1.26 (at 1.77Å)	Xtrriage
Refinement program	PHENIX 1.20.1_4487	Depositor
R, R_{free}	0.188 , 0.234 0.188 , 0.195	Depositor DCC
R_{free} test set	1987 reflections (4.41%)	wwPDB-VP
Wilson B-factor (Å ²)	21.5	Xtrriage
Anisotropy	0.480	Xtrriage
Bulk solvent k_{sol} (e/Å ³), B_{sol} (Å ²)	0.37 , 54.5	EDS
L-test for twinning ²	$\langle L \rangle = 0.51$, $\langle L^2 \rangle = 0.34$	Xtrriage
Estimated twinning fraction	0.009 for h,-k,-h-l	Xtrriage
F_o, F_c correlation	0.96	EDS
Total number of atoms	4174	wwPDB-VP
Average B, all atoms (Å ²)	30.0	wwPDB-VP

Xtrriage's analysis on translational NCS is as follows: *The largest off-origin peak in the Patterson function is 6.32% of the height of the origin peak. No significant pseudotranslation is detected.*

¹Intensities estimated from amplitudes.

²Theoretical values of $\langle |L| \rangle$, $\langle L^2 \rangle$ for acentric reflections are 0.5, 0.333 respectively for untwinned datasets, and 0.375, 0.2 for perfectly twinned datasets.

5 Model quality [i](#)

5.1 Standard geometry [i](#)

Bond lengths and bond angles in the following residue types are not validated in this section: CA, SO4, LDA, 78M, 78N, FLC, PE5

The Z score for a bond length (or angle) is the number of standard deviations the observed value is removed from the expected value. A bond length (or angle) with $|Z| > 5$ is considered an outlier worth inspection. RMSZ is the root-mean-square of all Z scores of the bond lengths (or angles).

Mol	Chain	Bond lengths		Bond angles	
		RMSZ	# Z >5	RMSZ	# Z >5
1	A	0.40	0/3796	0.68	3/5148 (0.1%)

There are no bond length outliers.

All (3) bond angle outliers are listed below:

Mol	Chain	Res	Type	Atoms	Z	Observed(°)	Ideal(°)
1	A	396	ASP	CB-CG-OD1	6.63	124.27	118.30
1	A	199	ASP	CB-CG-OD2	-5.44	113.40	118.30
1	A	199	ASP	CB-CG-OD1	5.29	123.06	118.30

There are no chirality outliers.

There are no planarity outliers.

5.2 Too-close contacts [i](#)

In the following table, the Non-H and H(model) columns list the number of non-hydrogen atoms and hydrogen atoms in the chain respectively. The H(added) column lists the number of hydrogen atoms added and optimized by MolProbity. The Clashes column lists the number of clashes within the asymmetric unit, whereas Symm-Clashes lists symmetry-related clashes.

Mol	Chain	Non-H	H(model)	H(added)	Clashes	Symm-Clashes
1	A	3699	0	3436	40	1
2	A	5	0	0	0	0
3	A	2	0	0	0	0
4	A	13	0	5	0	0
5	A	89	0	155	4	0
6	A	66	0	102	6	0
7	A	88	0	136	5	0
8	A	23	0	26	2	0

Continued on next page...

Continued from previous page...

Mol	Chain	Non-H	H(model)	H(added)	Clashes	Symm-Clashes
9	A	189	0	0	3	0
All	All	4174	0	3860	43	1

The all-atom clashscore is defined as the number of clashes found per 1000 atoms (including hydrogen atoms). The all-atom clashscore for this structure is 5.

All (43) close contacts within the same asymmetric unit are listed below, sorted by their clash magnitude.

Atom-1	Atom-2	Interatomic distance (Å)	Clash overlap (Å)
1:A:469:HIS:HE1	6:A:1016:78M:H18	1.56	0.70
1:A:200:ILE:HD11	5:A:1007:LDA:H42	1.75	0.68
1:A:392:ARG:HG3	1:A:415:ILE:HD11	1.83	0.61
1:A:70:TRP:HZ2	6:A:1012:78M:H21C	1.70	0.55
1:A:441:ASP:N	1:A:441:ASP:OD1	2.34	0.55
1:A:354:ARG:HH12	1:A:370:THR:HG21	1.70	0.54
1:A:469:HIS:CE1	6:A:1016:78M:H18	2.40	0.54
1:A:427:PHE:CD1	1:A:433:PRO:HG3	2.42	0.54
1:A:264:TRP:CZ2	1:A:304:GLY:HA3	2.43	0.54
1:A:423:VAL:HG12	7:A:1015:78N:H92C	1.92	0.51
1:A:370:THR:HG23	9:A:1169:HOH:O	2.12	0.50
1:A:447[A]:ILE:HD13	1:A:475:PHE:CD1	2.47	0.50
1:A:447[A]:ILE:HD13	1:A:475:PHE:CE1	2.48	0.48
1:A:184:ASP:OD2	7:A:1020:78N:O22	2.20	0.47
1:A:336:THR:HG23	8:A:1018:PE5:C5	2.44	0.47
7:A:1015:78N:H1	7:A:1015:78N:H111	1.51	0.47
1:A:70:TRP:HE1	6:A:1012:78M:H171	1.80	0.46
1:A:449:PHE:HZ	6:A:1016:78M:H91C	1.80	0.46
5:A:1005:LDA:H51	5:A:1005:LDA:H82	1.40	0.46
1:A:264:TRP:CE2	1:A:304:GLY:HA3	2.51	0.46
1:A:378:ARG:HD3	1:A:439:TYR:CD1	2.51	0.45
1:A:327:LYS:O	1:A:327:LYS:HG3	2.15	0.45
1:A:219:ASP:HB2	1:A:239:GLY:H	1.83	0.44
1:A:335:GLN:HG2	8:A:1018:PE5:H42	1.99	0.44
1:A:255:TYR:CE1	1:A:349:ARG:HG2	2.52	0.44
1:A:114:TYR:OH	9:A:1101:HOH:O	2.16	0.44
1:A:427:PHE:HA	1:A:440:VAL:HG11	1.99	0.43
1:A:427:PHE:CG	1:A:433:PRO:HG3	2.52	0.43
1:A:301:VAL:HG21	5:A:1008:LDA:H61	2.01	0.43
1:A:381:TYR:CE1	7:A:1015:78N:H172	2.53	0.43
1:A:380:ASP:OD1	1:A:440:VAL:HG22	2.19	0.42
1:A:255:TYR:CE2	1:A:256:ARG:HG2	2.54	0.42

Continued on next page...

Continued from previous page...

Atom-1	Atom-2	Interatomic distance (Å)	Clash overlap (Å)
1:A:247:GLU:HG2	9:A:1253:HOH:O	2.19	0.42
1:A:370:THR:HG22	1:A:388:HIS:ND1	2.34	0.42
1:A:13:GLY:O	1:A:349:ARG:NH2	2.53	0.41
1:A:214:ILE:HG13	1:A:244:LEU:HD23	2.02	0.41
1:A:137:PHE:CE1	5:A:1011:LDA:H71	2.56	0.41
1:A:447[A]:ILE:HD12	1:A:474:ASP:O	2.21	0.41
1:A:189:GLU:CD	1:A:189:GLU:H	2.24	0.41
1:A:224:ARG:HG3	1:A:230:VAL:HG12	2.02	0.41
1:A:381:TYR:CE2	1:A:425:LYS:HD3	2.56	0.41
6:A:1016:78M:H92C	6:A:1016:78M:H61C	1.92	0.40
1:A:381:TYR:CE1	7:A:1015:78N:H191	2.57	0.40

All (1) symmetry-related close contacts are listed below. The label for Atom-2 includes the symmetry operator and encoded unit-cell translations to be applied.

Atom-1	Atom-2	Interatomic distance (Å)	Clash overlap (Å)
1:A:124:TYR:OH	1:A:433:PRO:O[3_545]	2.04	0.16

5.3 Torsion angles [i](#)

5.3.1 Protein backbone [i](#)

In the following table, the Percentiles column shows the percent Ramachandran outliers of the chain as a percentile score with respect to all X-ray entries followed by that with respect to entries of similar resolution.

The Analysed column shows the number of residues for which the backbone conformation was analysed, and the total number of residues.

Mol	Chain	Analysed	Favoured	Allowed	Outliers	Percentiles
1	A	464/479 (97%)	449 (97%)	15 (3%)	0	100 100

There are no Ramachandran outliers to report.

5.3.2 Protein sidechains [i](#)

In the following table, the Percentiles column shows the percent sidechain outliers of the chain as a percentile score with respect to all X-ray entries followed by that with respect to entries of similar resolution.

The Analysed column shows the number of residues for which the sidechain conformation was analysed, and the total number of residues.

Mol	Chain	Analysed	Rotameric	Outliers	Percentiles
1	A	378/388 (97%)	373 (99%)	5 (1%)	69 59

All (5) residues with a non-rotameric sidechain are listed below:

Mol	Chain	Res	Type
1	A	94	GLN
1	A	231	ASP
1	A	258	SER
1	A	398	ASP
1	A	441	ASP

Sometimes sidechains can be flipped to improve hydrogen bonding and reduce clashes. There are no such sidechains identified.

5.3.3 RNA [i](#)

There are no RNA molecules in this entry.

5.4 Non-standard residues in protein, DNA, RNA chains [i](#)

There are no non-standard protein/DNA/RNA residues in this entry.

5.5 Carbohydrates [i](#)

There are no monosaccharides in this entry.

5.6 Ligand geometry [i](#)

Of 21 ligands modelled in this entry, 2 are monoatomic - leaving 19 for Mogul analysis.

In the following table, the Counts columns list the number of bonds (or angles) for which Mogul statistics could be retrieved, the number of bonds (or angles) that are observed in the model and the number of bonds (or angles) that are defined in the Chemical Component Dictionary. The Link column lists molecule types, if any, to which the group is linked. The Z score for a bond length (or angle) is the number of standard deviations the observed value is removed from the expected value. A bond length (or angle) with $|Z| > 2$ is considered an outlier worth inspection. RMSZ is the root-mean-square of all Z scores of the bond lengths (or angles).

Mol	Type	Chain	Res	Link	Bond lengths			Bond angles		
					Counts	RMSZ	# Z > 2	Counts	RMSZ	# Z > 2
4	FLC	A	1003	-	12,12,12	1.05	0	17,17,17	1.59	2 (11%)
7	78N	A	1013	-	21,21,21	0.84	2 (9%)	22,22,22	1.01	1 (4%)
2	SO4	A	1000	-	4,4,4	0.16	0	6,6,6	0.22	0
5	LDA	A	1008	-	11,11,15	0.25	0	10,10,17	0.60	0
5	LDA	A	1011	-	10,10,15	0.28	0	9,9,17	0.62	0
6	78M	A	1016	-	21,21,21	0.85	1 (4%)	22,22,22	0.98	1 (4%)
5	LDA	A	1005	-	11,11,15	0.24	0	10,10,17	0.68	0
5	LDA	A	1007	-	8,8,15	0.28	0	7,7,17	0.42	0
5	LDA	A	1009	-	8,8,15	0.28	0	7,7,17	0.48	0
6	78M	A	1014	-	21,21,21	0.88	1 (4%)	22,22,22	1.00	1 (4%)
6	78M	A	1012	-	21,21,21	0.85	2 (9%)	22,22,22	1.07	2 (9%)
5	LDA	A	1006	-	12,15,15	2.05	1 (8%)	14,17,17	0.42	0
7	78N	A	1015	-	21,21,21	0.87	2 (9%)	22,22,22	0.95	1 (4%)
8	PE5	A	1017	-	14,14,26	0.53	0	13,13,25	0.26	0
7	78N	A	1019	-	21,21,21	0.89	1 (4%)	22,22,22	0.96	1 (4%)
7	78N	A	1020	-	21,21,21	0.77	2 (9%)	22,22,22	1.12	2 (9%)
5	LDA	A	1004	-	7,10,15	2.68	1 (14%)	9,12,17	0.46	0
8	PE5	A	1018	-	7,7,26	0.45	0	6,6,25	0.29	0
5	LDA	A	1010	-	8,8,15	0.27	0	7,7,17	0.49	0

In the following table, the Chirals column lists the number of chiral outliers, the number of chiral centers analysed, the number of these observed in the model and the number defined in the Chemical Component Dictionary. Similar counts are reported in the Torsion and Rings columns. '-' means no outliers of that kind were identified.

Mol	Type	Chain	Res	Link	Chirals	Torsions	Rings
5	LDA	A	1007	-	-	4/6/6/13	-
4	FLC	A	1003	-	-	6/16/16/16	-
5	LDA	A	1005	-	-	5/9/9/13	-
7	78N	A	1013	-	-	7/21/21/21	-
8	PE5	A	1017	-	-	3/12/12/24	-
8	PE5	A	1018	-	-	3/5/5/24	-
6	78M	A	1016	-	-	8/21/21/21	-
7	78N	A	1019	-	-	8/21/21/21	-
7	78N	A	1020	-	-	12/21/21/21	-
6	78M	A	1012	-	-	5/21/21/21	-
5	LDA	A	1009	-	-	3/6/6/13	-
5	LDA	A	1008	-	-	4/9/9/13	-

Continued on next page...

Continued from previous page...

Mol	Type	Chain	Res	Link	Chirals	Torsions	Rings
5	LDA	A	1004	-	-	0/8/8/13	-
6	78M	A	1014	-	-	8/21/21/21	-
5	LDA	A	1011	-	-	4/8/8/13	-
5	LDA	A	1010	-	-	4/6/6/13	-
5	LDA	A	1006	-	-	5/13/13/13	-
7	78N	A	1015	-	-	9/21/21/21	-

All (13) bond length outliers are listed below:

Mol	Chain	Res	Type	Atoms	Z	Observed(Å)	Ideal(Å)
5	A	1004	LDA	O1-N1	-7.04	1.25	1.42
5	A	1006	LDA	O1-N1	-7.03	1.25	1.42
6	A	1014	78M	O2-C1	2.66	1.41	1.33
7	A	1019	78N	O16-C8	2.61	1.41	1.33
6	A	1016	78M	O2-C1	2.48	1.40	1.33
7	A	1015	78N	O16-C8	2.44	1.40	1.33
7	A	1013	78N	O16-C8	2.43	1.40	1.33
6	A	1012	78M	O2-C1	2.40	1.40	1.33
6	A	1012	78M	O2-C17	-2.14	1.40	1.45
7	A	1015	78N	O16-C17	-2.13	1.40	1.45
7	A	1020	78N	O16-C8	2.12	1.39	1.33
7	A	1013	78N	O16-C17	-2.03	1.40	1.45
7	A	1020	78N	O16-C17	-2.02	1.40	1.45

All (11) bond angle outliers are listed below:

Mol	Chain	Res	Type	Atoms	Z	Observed(°)	Ideal(°)
4	A	1003	FLC	OB2-CBC-CB	4.48	120.83	113.05
6	A	1012	78M	O2-C1-C2	3.16	121.82	111.91
7	A	1019	78N	O16-C8-C7	3.07	121.53	111.91
6	A	1014	78M	O2-C1-C2	3.03	121.42	111.91
6	A	1016	78M	O2-C1-C2	2.90	121.00	111.91
7	A	1013	78N	O16-C8-C7	2.77	120.59	111.91
7	A	1015	78N	O16-C8-C7	2.69	120.35	111.91
7	A	1020	78N	O16-C8-C7	2.54	119.88	111.91
7	A	1020	78N	C5-C6-C7	-2.28	105.01	113.19
4	A	1003	FLC	OB1-CBC-CB	-2.16	119.19	122.25
6	A	1012	78M	O2-C1-O1	-2.02	118.50	123.59

There are no chirality outliers.

All (98) torsion outliers are listed below:

Mol	Chain	Res	Type	Atoms
6	A	1012	78M	O2-C17-C18-O19
6	A	1012	78M	O1-C1-O2-C17
6	A	1012	78M	C2-C1-O2-C17
6	A	1016	78M	O1-C1-O2-C17
7	A	1015	78N	O15-C8-O16-C17
6	A	1016	78M	C2-C1-O2-C17
7	A	1015	78N	C7-C8-O16-C17
6	A	1014	78M	O1-C1-O2-C17
7	A	1015	78N	O16-C17-C18-O20
6	A	1014	78M	C2-C1-O2-C17
5	A	1005	LDA	C5-C6-C7-C8
6	A	1012	78M	O2-C17-C18-C20
8	A	1018	PE5	O1-C1-C2-O2
7	A	1019	78N	O16-C17-C18-O20
7	A	1020	78N	O16-C17-C18-O20
8	A	1017	PE5	O1-C1-C2-O2
7	A	1019	78N	O16-C17-C18-C19
7	A	1020	78N	O16-C17-C18-C19
5	A	1007	LDA	C5-C6-C7-C8
6	A	1016	78M	C3-C4-C5-C6
5	A	1008	LDA	C4-C5-C6-C7
5	A	1006	LDA	C11-C10-C9-C8
5	A	1008	LDA	C5-C6-C7-C8
5	A	1011	LDA	C3-C4-C5-C6
5	A	1009	LDA	C4-C5-C6-C7
7	A	1015	78N	C17-C18-C19-O22
7	A	1020	78N	C17-C18-C19-O22
5	A	1006	LDA	C7-C8-C9-C10
5	A	1007	LDA	C3-C4-C5-C6
7	A	1020	78N	C11-C12-C13-C14
5	A	1005	LDA	C4-C5-C6-C7
5	A	1010	LDA	C4-C5-C6-C7
5	A	1006	LDA	C3-C4-C5-C6
7	A	1020	78N	O20-C18-C19-O22
6	A	1014	78M	C10-C11-C12-C13
5	A	1008	LDA	C7-C8-C9-C10
6	A	1012	78M	C4-C5-C6-C7
6	A	1016	78M	C4-C5-C6-C7
7	A	1015	78N	C4-C5-C6-C7
6	A	1016	78M	C11-C10-C9-C8
6	A	1014	78M	C3-C4-C5-C6
5	A	1006	LDA	C1-C2-C3-C4

Continued on next page...

Continued from previous page...

Mol	Chain	Res	Type	Atoms
5	A	1011	LDA	C1-C2-C3-C4
5	A	1005	LDA	C1-C2-C3-C4
5	A	1011	LDA	C11-C10-C9-C8
7	A	1015	78N	O20-C18-C19-O22
7	A	1020	78N	C2-C3-C4-C5
5	A	1007	LDA	C1-C2-C3-C4
7	A	1013	78N	C17-C18-C19-O22
7	A	1015	78N	C11-C10-C9-C1
8	A	1017	PE5	C10-C9-O5-C8
4	A	1003	FLC	CA-CB-CBC-OB1
4	A	1003	FLC	CA-CB-CBC-OB2
4	A	1003	FLC	CG-CB-CBC-OB1
4	A	1003	FLC	CG-CB-CBC-OB2
5	A	1009	LDA	C3-C4-C5-C6
5	A	1006	LDA	C9-C10-C11-C12
7	A	1020	78N	C3-C4-C5-C6
5	A	1007	LDA	C4-C5-C6-C7
6	A	1014	78M	C11-C10-C9-C8
7	A	1013	78N	C4-C5-C6-C7
7	A	1019	78N	O20-C18-C19-O22
6	A	1016	78M	C1-C2-C3-C4
6	A	1016	78M	C9-C10-C11-C12
7	A	1020	78N	C7-C8-O16-C17
7	A	1013	78N	C3-C4-C5-C6
5	A	1010	LDA	C3-C4-C5-C6
7	A	1019	78N	C12-C13-C14-C15
8	A	1017	PE5	C7-C8-O5-C9
4	A	1003	FLC	CB-CA-CAC-OA2
8	A	1018	PE5	C3-C4-O3-C5
7	A	1020	78N	O15-C8-O16-C17
7	A	1013	78N	C12-C13-C14-C15
7	A	1015	78N	O16-C17-C18-C19
7	A	1013	78N	C2-C3-C4-C5
7	A	1019	78N	C11-C12-C13-C14
7	A	1020	78N	C6-C7-C8-O16
4	A	1003	FLC	CB-CA-CAC-OA1
7	A	1019	78N	C3-C4-C5-C6
5	A	1011	LDA	C7-C8-C9-C10
7	A	1013	78N	C11-C12-C13-C14
7	A	1013	78N	C10-C11-C12-C13
5	A	1010	LDA	C1-C2-C3-C4
7	A	1019	78N	C17-C18-C19-O22

Continued on next page...

Continued from previous page...

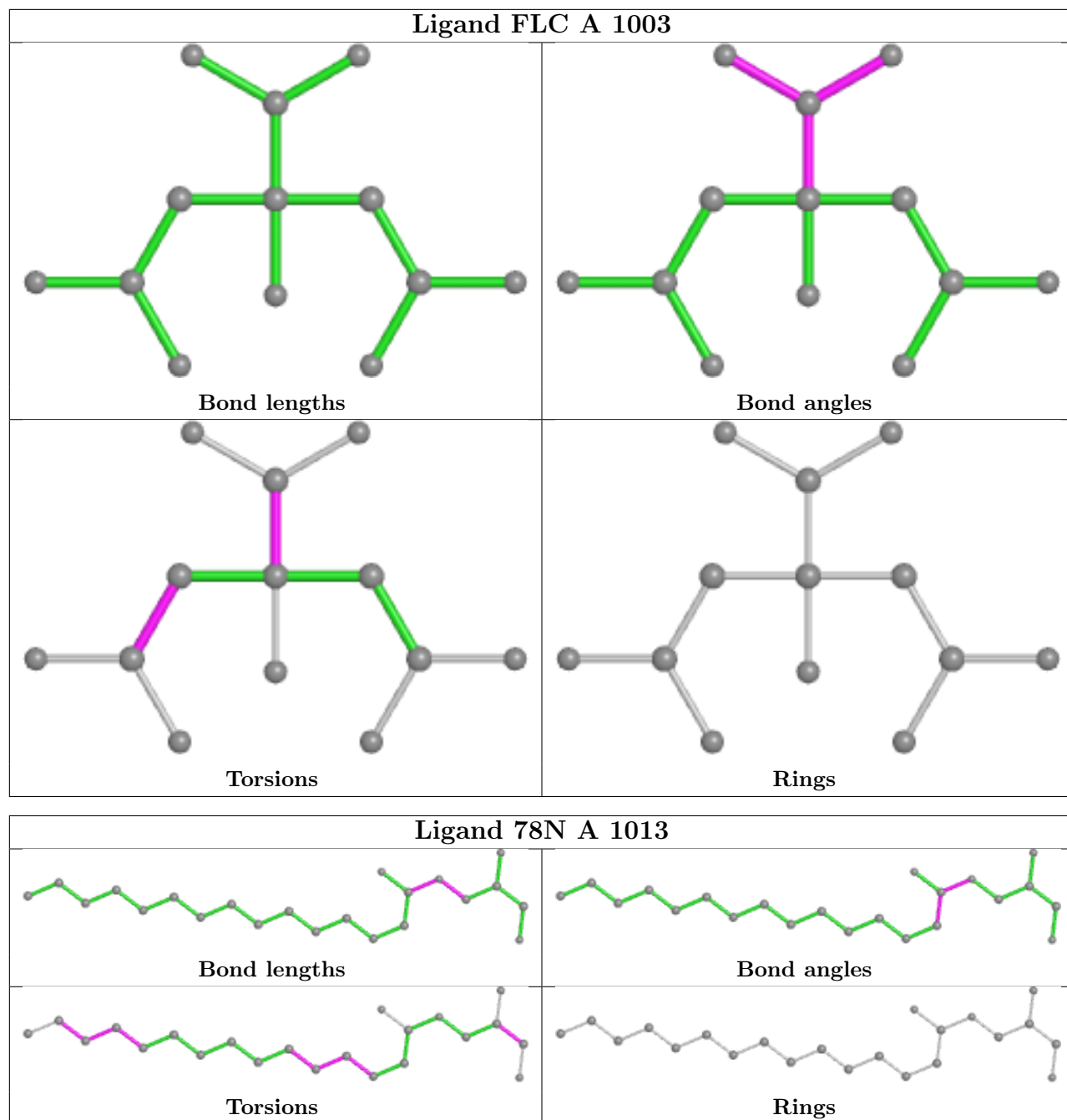
Mol	Chain	Res	Type	Atoms
6	A	1014	78M	C5-C6-C7-C8
6	A	1016	78M	C7-C8-C9-C10
5	A	1005	LDA	C6-C7-C8-C9
6	A	1014	78M	O2-C17-C18-O19
7	A	1020	78N	C2-C1-C9-C10
8	A	1018	PE5	O2-C3-C4-O3
7	A	1015	78N	C1-C2-C3-C4
5	A	1008	LDA	C1-C2-C3-C4
7	A	1019	78N	C1-C2-C3-C4
6	A	1014	78M	C4-C5-C6-C7
7	A	1020	78N	C9-C10-C11-C12
5	A	1005	LDA	C9-C10-C11-C12
5	A	1010	LDA	C2-C3-C4-C5
5	A	1009	LDA	C1-C2-C3-C4

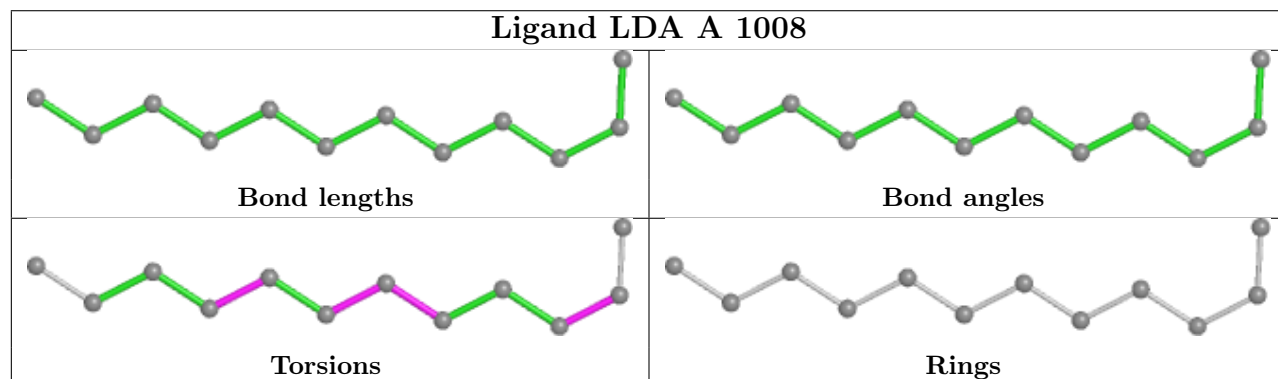
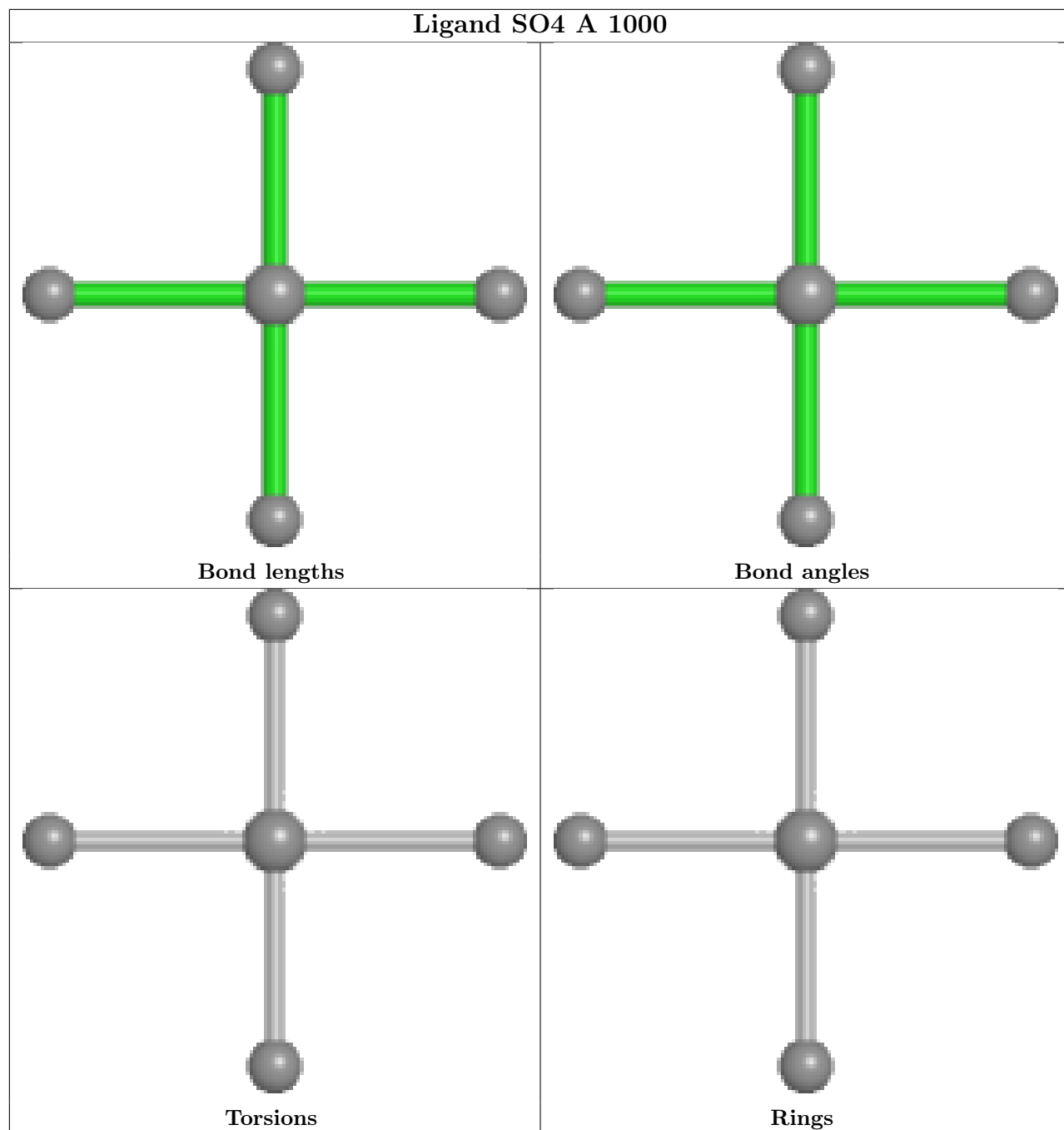
There are no ring outliers.

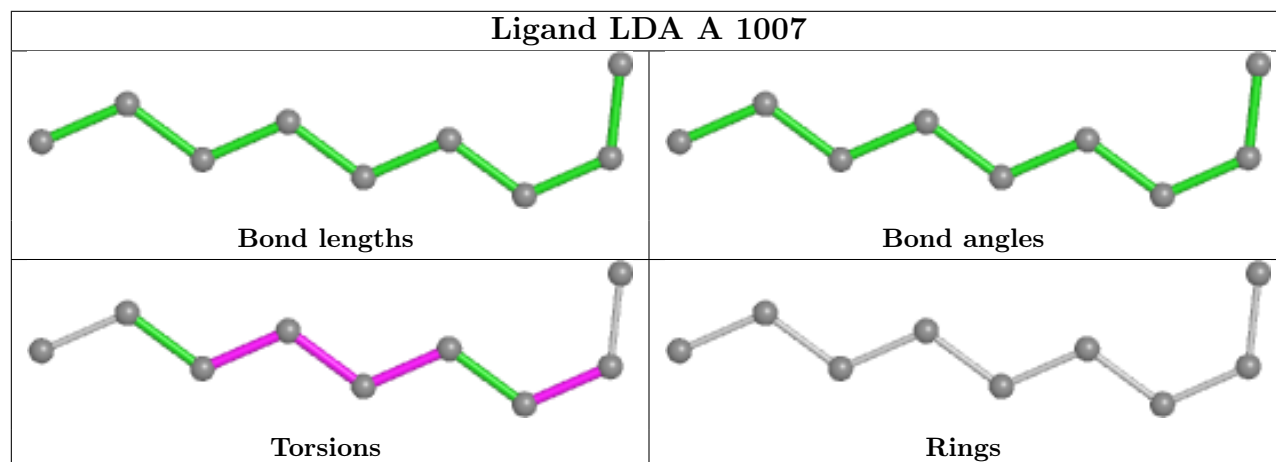
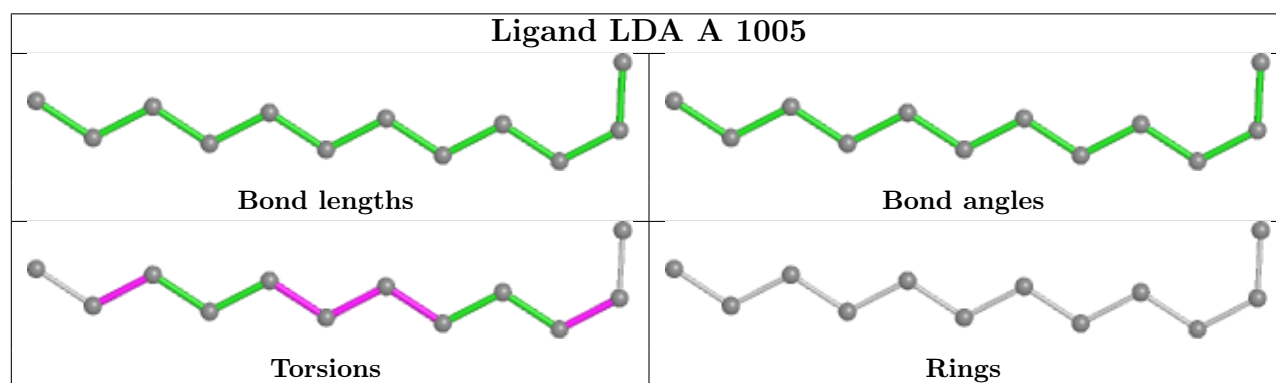
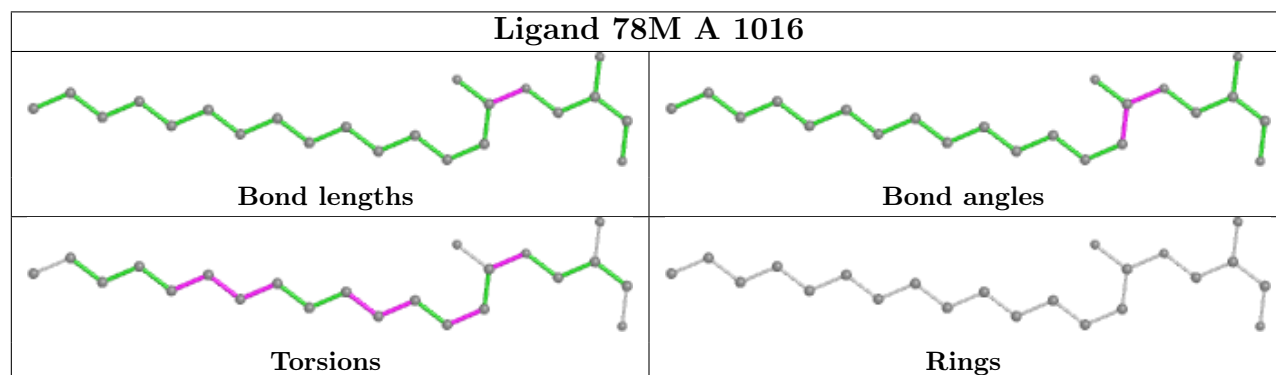
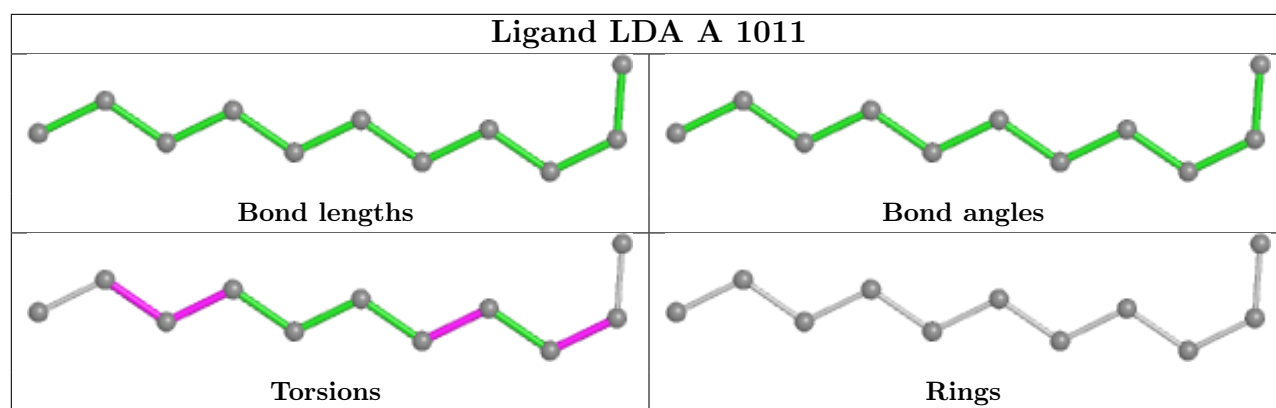
9 monomers are involved in 17 short contacts:

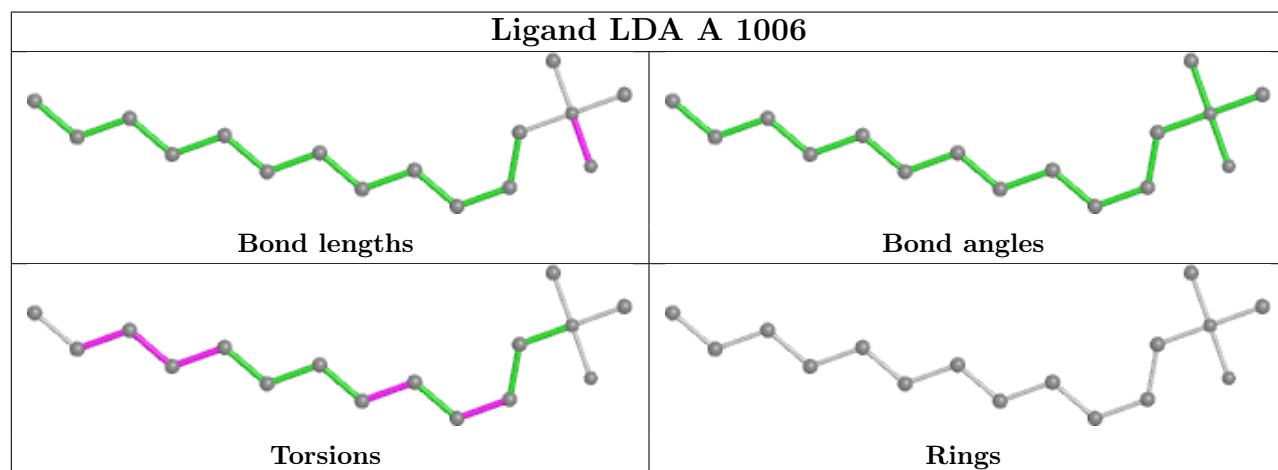
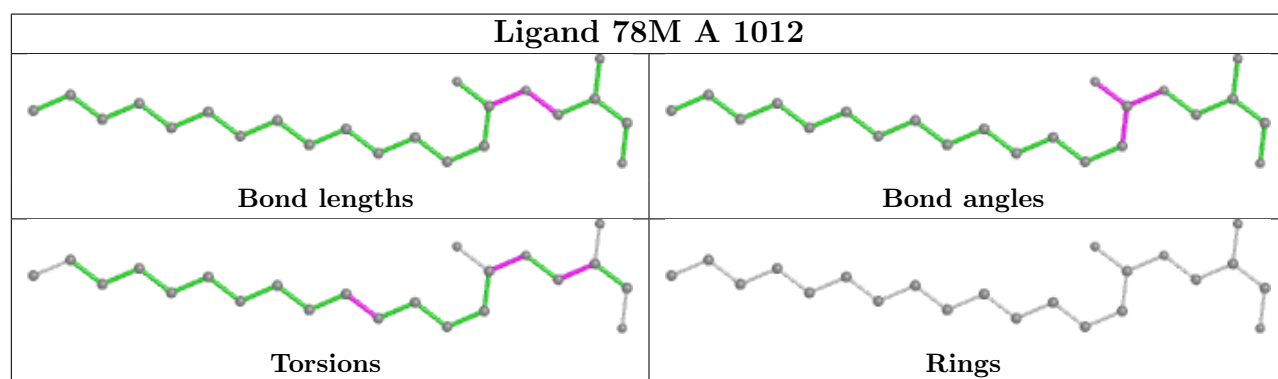
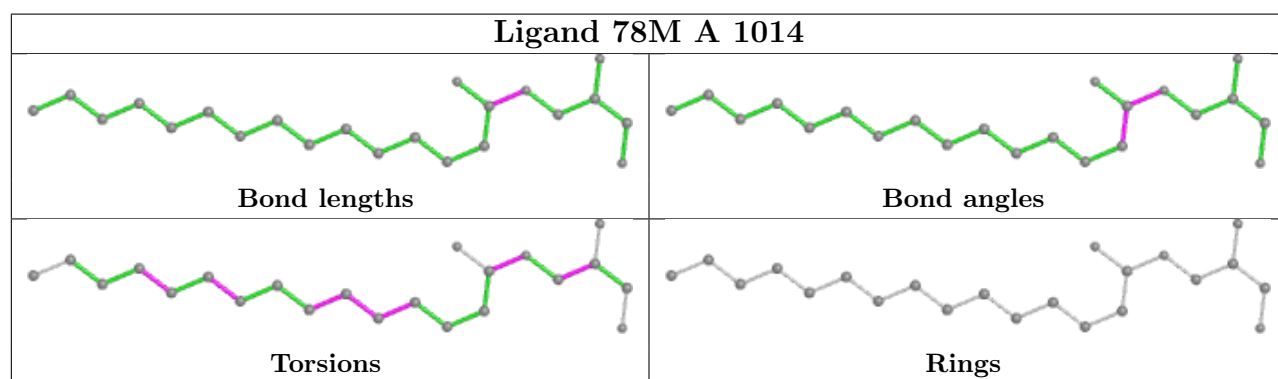
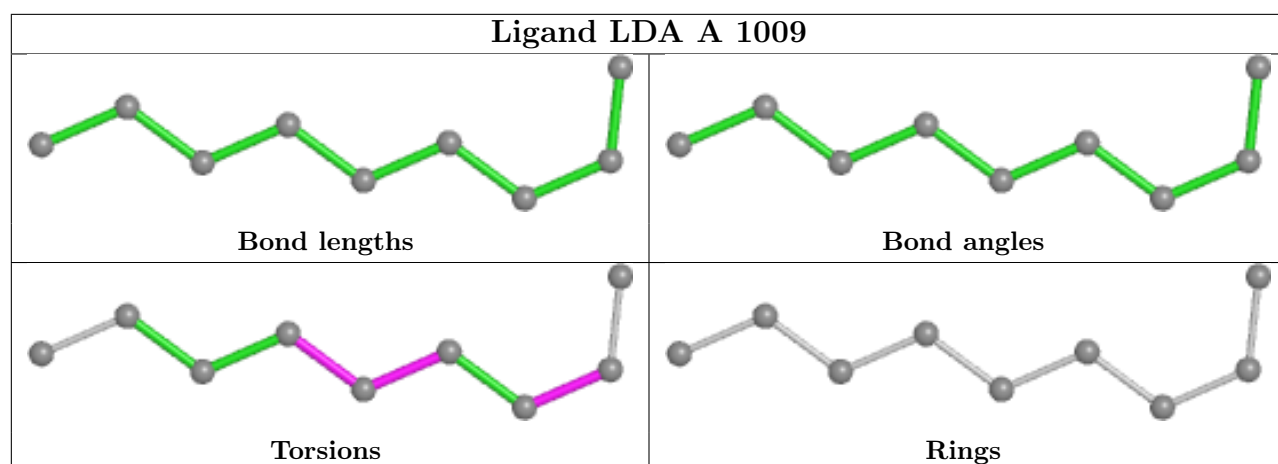
Mol	Chain	Res	Type	Clashes	Symm-Clashes
5	A	1008	LDA	1	0
5	A	1011	LDA	1	0
6	A	1016	78M	4	0
5	A	1005	LDA	1	0
5	A	1007	LDA	1	0
6	A	1012	78M	2	0
7	A	1015	78N	4	0
7	A	1020	78N	1	0
8	A	1018	PE5	2	0

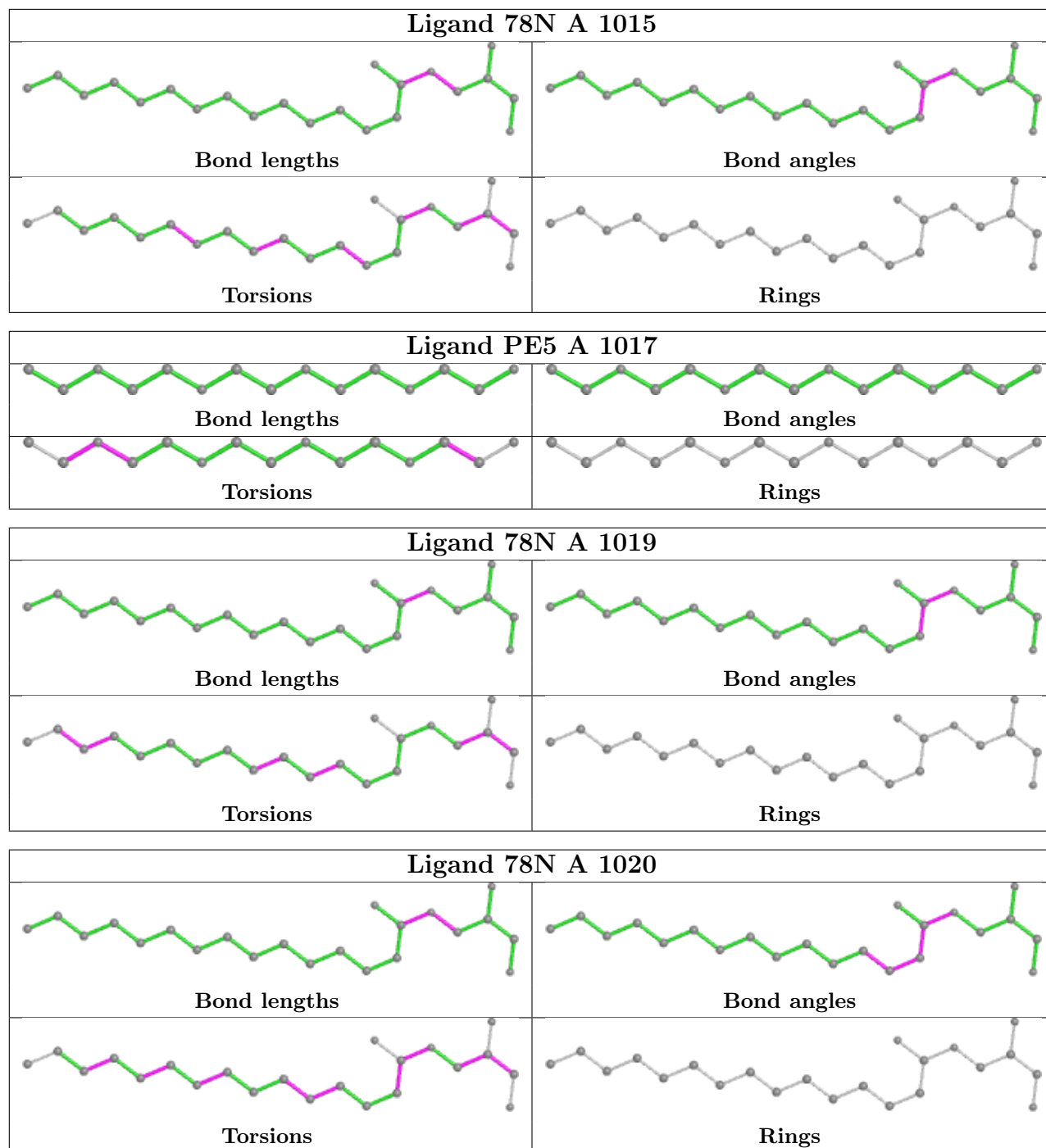
The following is a two-dimensional graphical depiction of Mogul quality analysis of bond lengths, bond angles, torsion angles, and ring geometry for all instances of the Ligand of Interest. In addition, ligands with molecular weight > 250 and outliers as shown on the validation Tables will also be included. For torsion angles, if less than 5% of the Mogul distribution of torsion angles is within 10 degrees of the torsion angle in question, then that torsion angle is considered an outlier. Any bond that is central to one or more torsion angles identified as an outlier by Mogul will be highlighted in the graph. For rings, the root-mean-square deviation (RMSD) between the ring in question and similar rings identified by Mogul is calculated over all ring torsion angles. If the average RMSD is greater than 60 degrees and the minimal RMSD between the ring in question and any Mogul-identified rings is also greater than 60 degrees, then that ring is considered an outlier. The outliers are highlighted in purple. The color gray indicates Mogul did not find sufficient equivalents in the CSD to analyse the geometry.

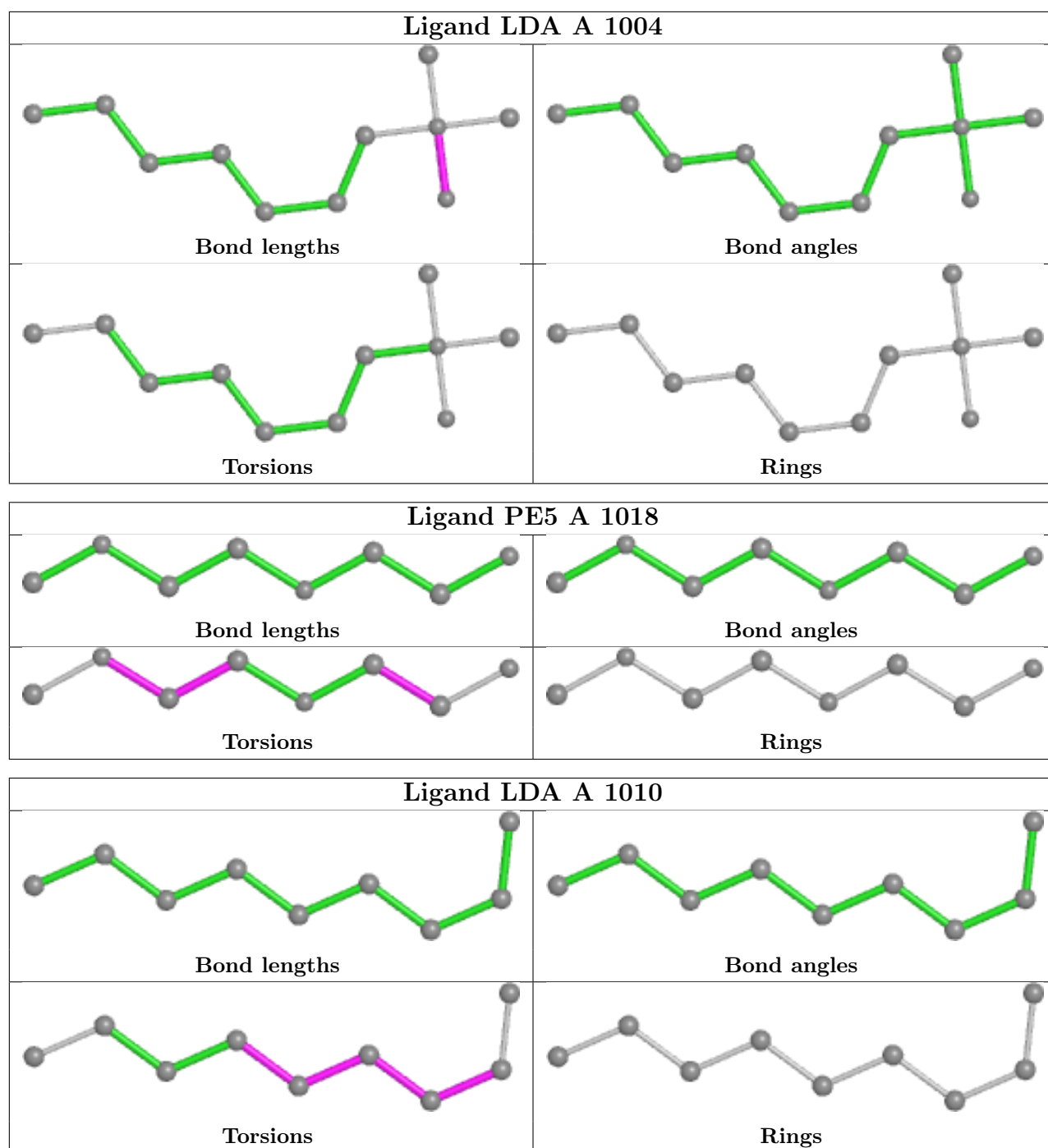












5.7 Other polymers [i](#)

There are no such residues in this entry.

5.8 Polymer linkage issues [i](#)

There are no chain breaks in this entry.

6 Fit of model and data

6.1 Protein, DNA and RNA chains

In the following table, the column labelled ‘#RSRZ> 2’ contains the number (and percentage) of RSRZ outliers, followed by percent RSRZ outliers for the chain as percentile scores relative to all X-ray entries and entries of similar resolution. The OWAB column contains the minimum, median, 95th percentile and maximum values of the occupancy-weighted average B-factor per residue. The column labelled ‘Q< 0.9’ lists the number of (and percentage) of residues with an average occupancy less than 0.9.

Mol	Chain	Analysed	<RSRZ>	#RSRZ>2	OWAB(Å ²)	Q<0.9
1	A	466/479 (97%)	0.44	34 (7%) 15 14	15, 26, 51, 105	0

All (34) RSRZ outliers are listed below:

Mol	Chain	Res	Type	RSRZ
1	A	283	ASP	8.1
1	A	431	LEU	6.0
1	A	284	ASP	5.8
1	A	232	ASN	5.3
1	A	440	VAL	5.1
1	A	439	TYR	5.1
1	A	434	ALA	4.6
1	A	282	VAL	4.6
1	A	50	ALA	4.0
1	A	475	PHE	3.8
1	A	438	GLN	3.6
1	A	70	TRP	3.6
1	A	52	GLY	3.5
1	A	281	THR	3.3
1	A	231	ASP	3.3
1	A	285	ARG	3.1
1	A	222	HIS	3.1
1	A	441	ASP	3.1
1	A	433	PRO	3.0
1	A	233	LEU	2.8
1	A	437	SER	2.7
1	A	109	GLU	2.5
1	A	429	GLN	2.5
1	A	396	ASP	2.5
1	A	184	ASP	2.4
1	A	477	TRP	2.4
1	A	400	GLY	2.3

Continued on next page...

Continued from previous page...

Mol	Chain	Res	Type	RSRZ
1	A	256	ARG	2.2
1	A	51	PRO	2.2
1	A	442	GLU	2.2
1	A	430	GLY	2.1
1	A	94	GLN	2.1
1	A	401	THR	2.0
1	A	435	SER	2.0

6.2 Non-standard residues in protein, DNA, RNA chains [i](#)

There are no non-standard protein/DNA/RNA residues in this entry.

6.3 Carbohydrates [i](#)

There are no monosaccharides in this entry.

6.4 Ligands [i](#)

In the following table, the Atoms column lists the number of modelled atoms in the group and the number defined in the chemical component dictionary. The B-factors column lists the minimum, median, 95th percentile and maximum values of B factors of atoms in the group. The column labelled 'Q< 0.9' lists the number of atoms with occupancy less than 0.9.

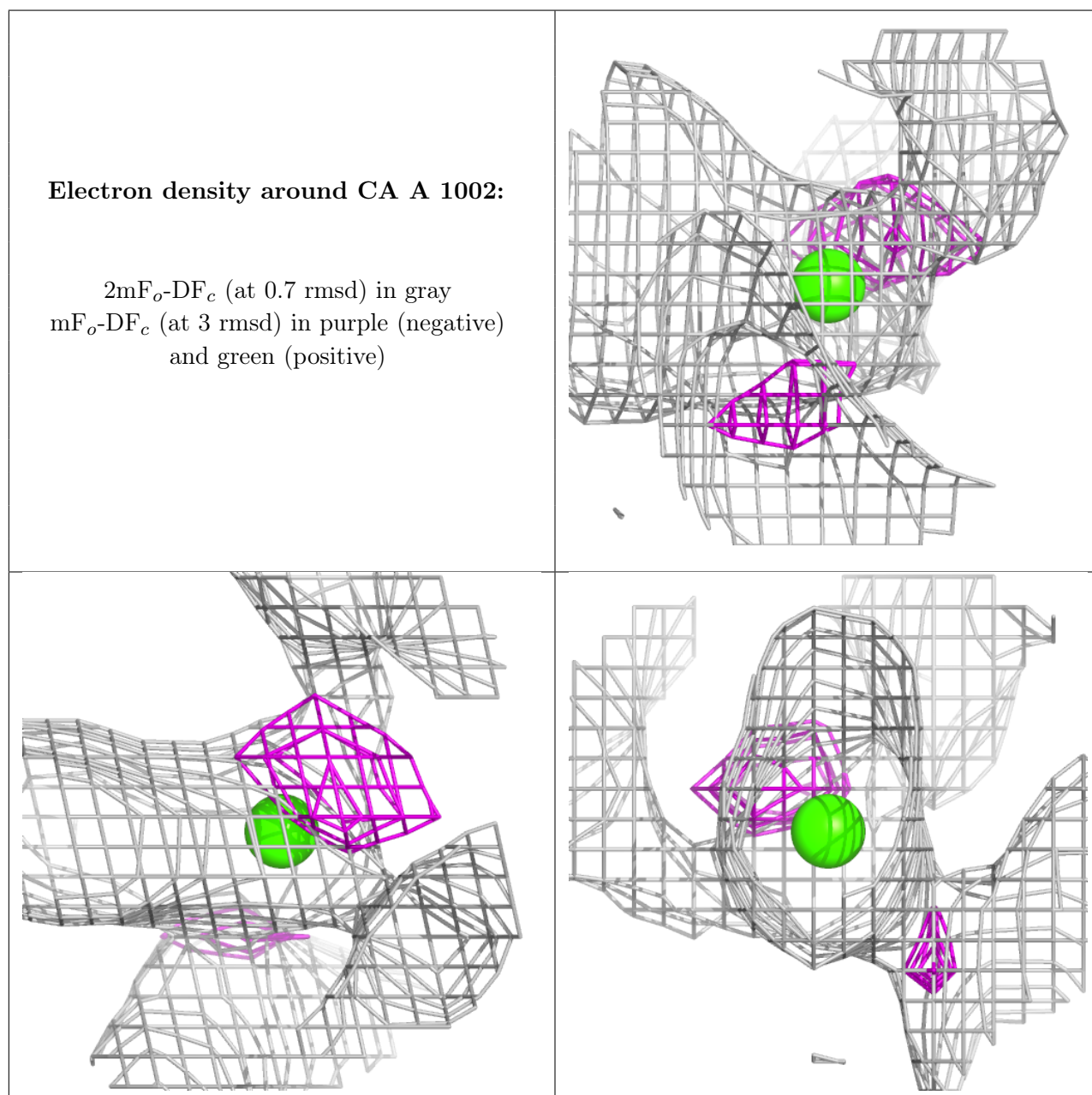
Mol	Type	Chain	Res	Atoms	RSCC	RSR	B-factors(Å ²)	Q<0.9
3	CA	A	1002	1/1	0.69	0.30	75,75,75,75	0
5	LDA	A	1006	16/16	0.69	0.18	35,46,71,71	0
7	78N	A	1020	22/22	0.69	0.20	28,39,53,64	0
6	78M	A	1016	22/22	0.71	0.21	45,60,66,66	0
5	LDA	A	1005	12/16	0.74	0.18	25,38,43,45	0
5	LDA	A	1004	11/16	0.76	0.20	39,44,67,74	0
5	LDA	A	1009	9/16	0.78	0.20	48,52,58,64	0
7	78N	A	1013	22/22	0.78	0.19	37,45,58,63	0
6	78M	A	1014	22/22	0.78	0.21	46,54,59,63	0
7	78N	A	1019	22/22	0.79	0.18	26,30,56,64	0
7	78N	A	1015	22/22	0.79	0.19	34,43,48,55	0
5	LDA	A	1008	12/16	0.80	0.23	29,43,65,65	0
6	78M	A	1012	22/22	0.81	0.20	28,39,53,61	0
8	PE5	A	1018	8/27	0.82	0.14	14,26,30,38	0
5	LDA	A	1007	9/16	0.83	0.15	38,39,45,48	0
5	LDA	A	1010	9/16	0.83	0.16	34,40,57,61	0

Continued on next page...

Continued from previous page...

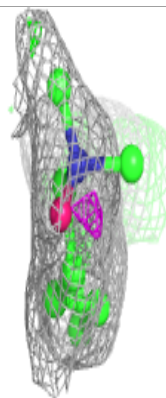
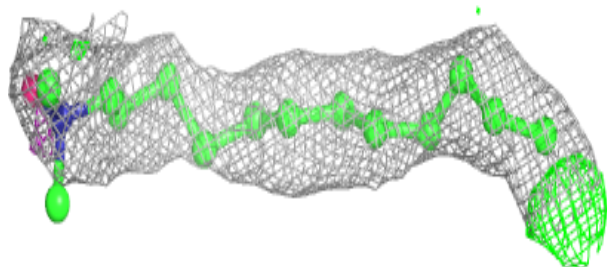
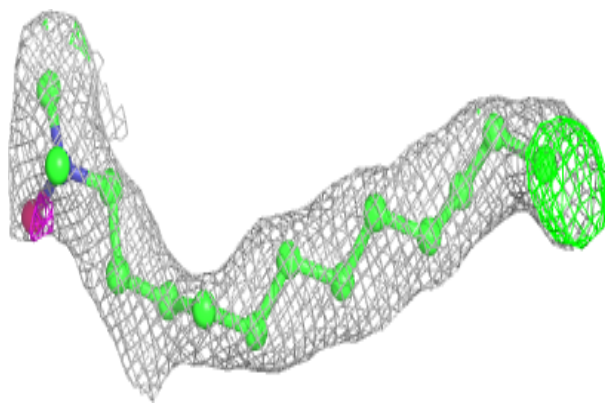
Mol	Type	Chain	Res	Atoms	RSCC	RSR	B-factors(\AA^2)	Q<0.9
5	LDA	A	1011	11/16	0.88	0.14	25,30,42,43	0
4	FLC	A	1003	13/13	0.89	0.22	28,34,39,43	0
8	PE5	A	1017	15/27	0.92	0.17	26,33,53,60	0
3	CA	A	1001	1/1	0.97	0.18	36,36,36,36	0
2	SO4	A	1000	5/5	0.98	0.09	26,29,29,31	0

The following is a graphical depiction of the model fit to experimental electron density of all instances of the Ligand of Interest. In addition, ligands with molecular weight > 250 and outliers as shown on the geometry validation Tables will also be included. Each fit is shown from different orientation to approximate a three-dimensional view.

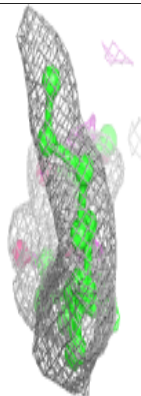
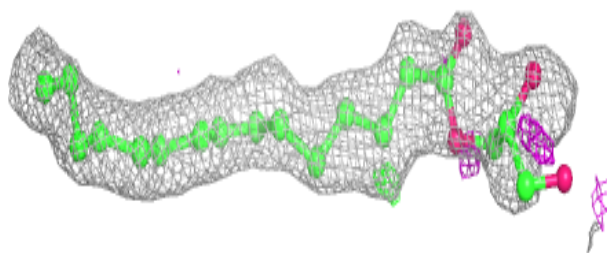
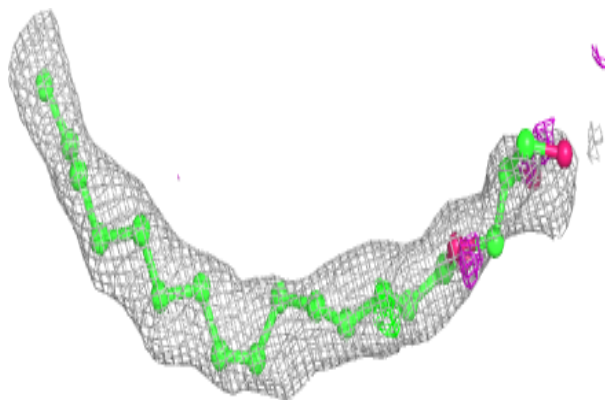


Electron density around LDA A 1006:

$2mF_o-DF_c$ (at 0.7 rmsd) in gray
 mF_o-DF_c (at 3 rmsd) in purple (negative)
and green (positive)

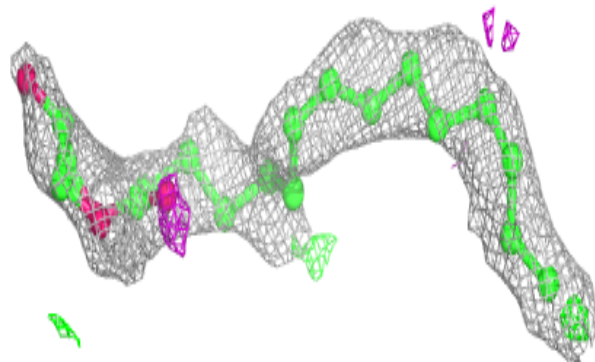
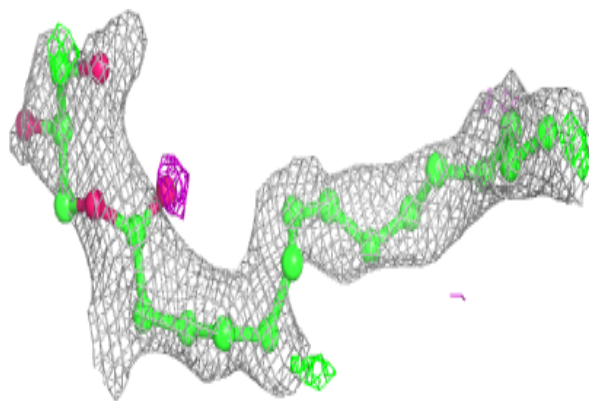
**Electron density around 78N A 1020:**

$2mF_o-DF_c$ (at 0.7 rmsd) in gray
 mF_o-DF_c (at 3 rmsd) in purple (negative)
and green (positive)

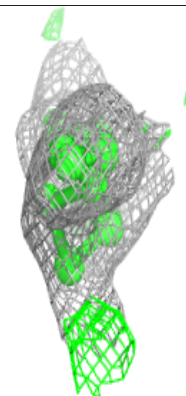
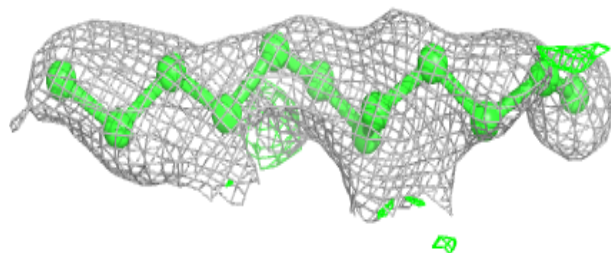
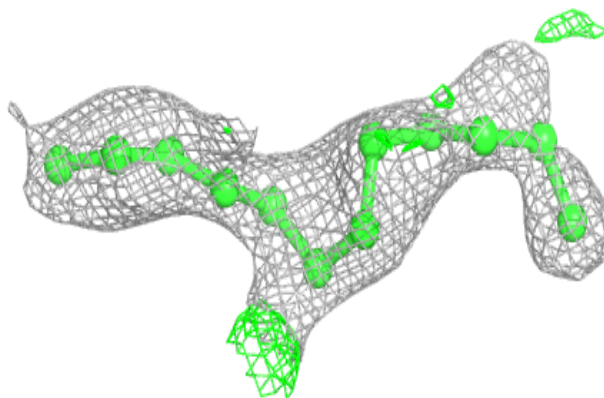


Electron density around 78M A 1016:

$2mF_o-DF_c$ (at 0.7 rmsd) in gray
 mF_o-DF_c (at 3 rmsd) in purple (negative)
and green (positive)

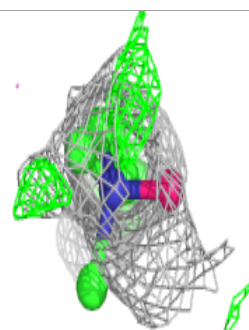
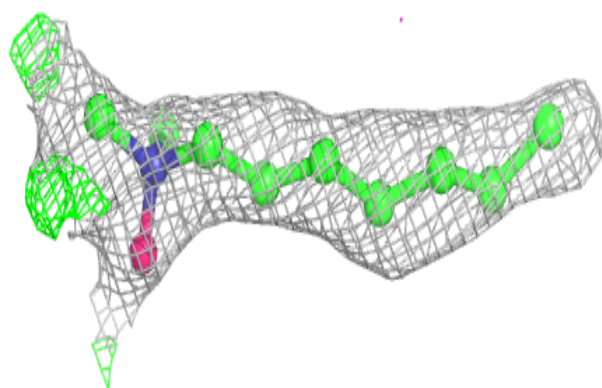
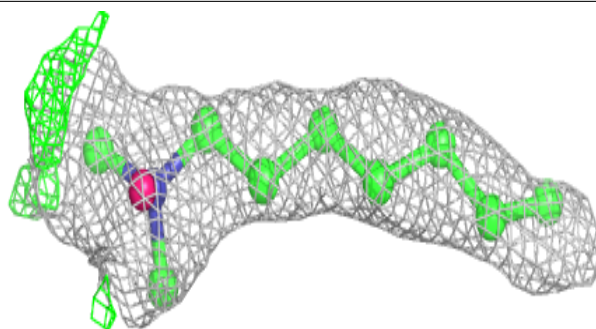
**Electron density around LDA A 1005:**

$2mF_o-DF_c$ (at 0.7 rmsd) in gray
 mF_o-DF_c (at 3 rmsd) in purple (negative)
and green (positive)

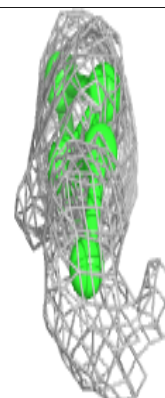
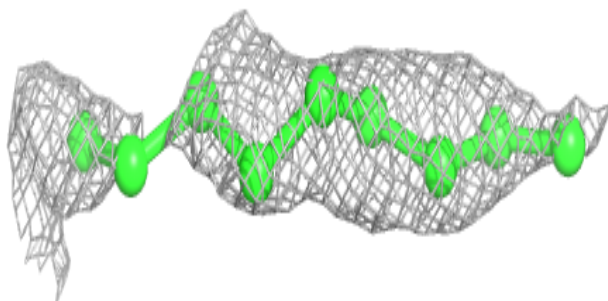
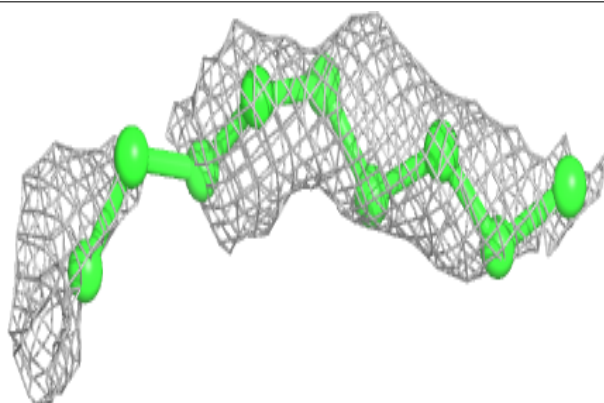


Electron density around LDA A 1004:

$2mF_o-DF_c$ (at 0.7 rmsd) in gray
 mF_o-DF_c (at 3 rmsd) in purple (negative)
and green (positive)

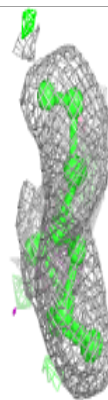
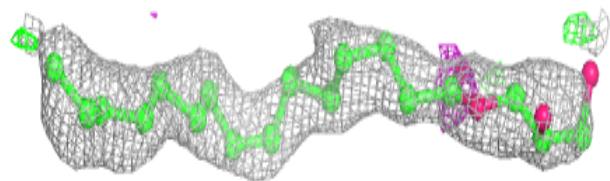
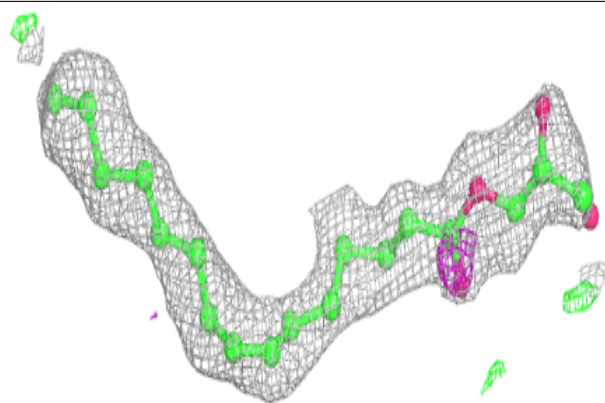
**Electron density around LDA A 1009:**

$2mF_o-DF_c$ (at 0.7 rmsd) in gray
 mF_o-DF_c (at 3 rmsd) in purple (negative)
and green (positive)

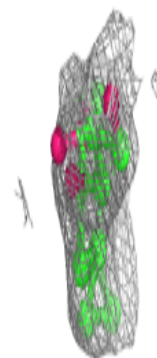
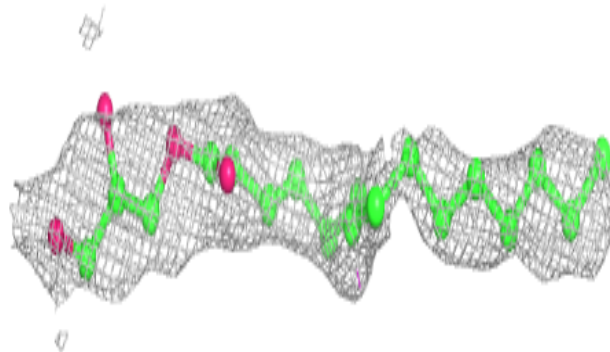
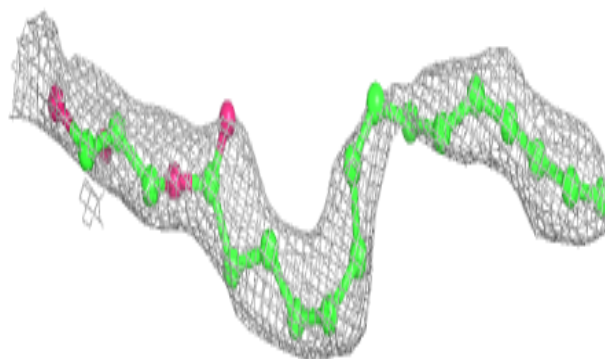


Electron density around 78N A 1013:

$2mF_o-DF_c$ (at 0.7 rmsd) in gray
 mF_o-DF_c (at 3 rmsd) in purple (negative)
and green (positive)

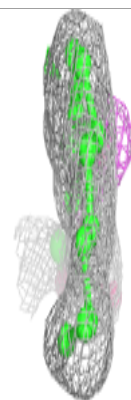
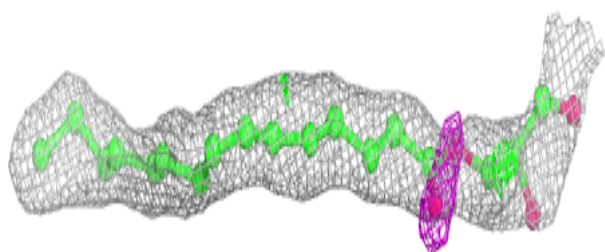
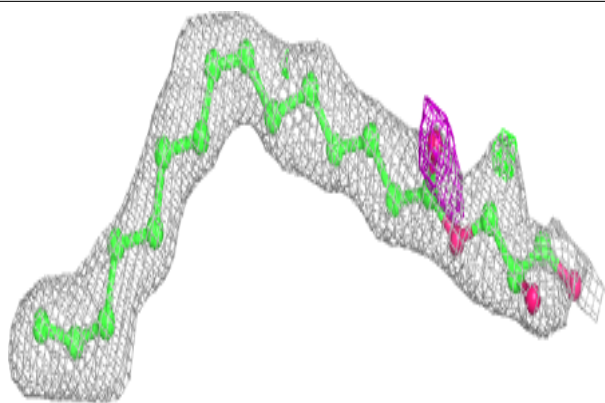
**Electron density around 78M A 1014:**

$2mF_o-DF_c$ (at 0.7 rmsd) in gray
 mF_o-DF_c (at 3 rmsd) in purple (negative)
and green (positive)

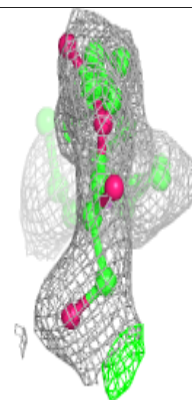
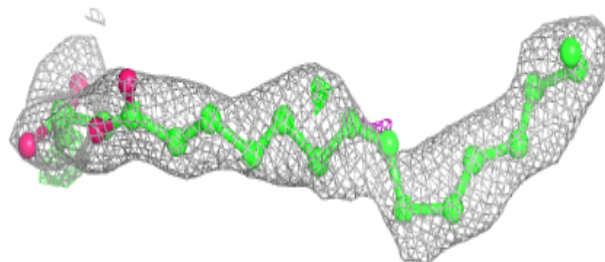
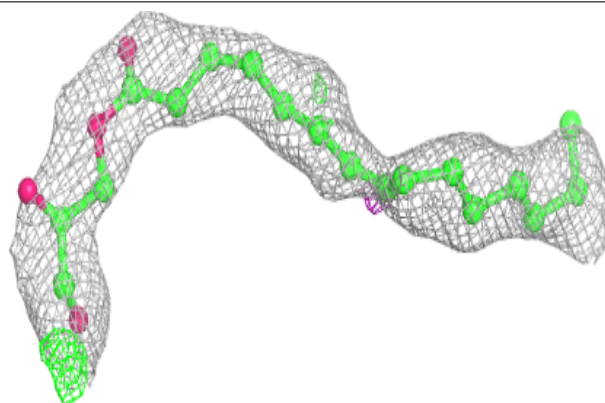


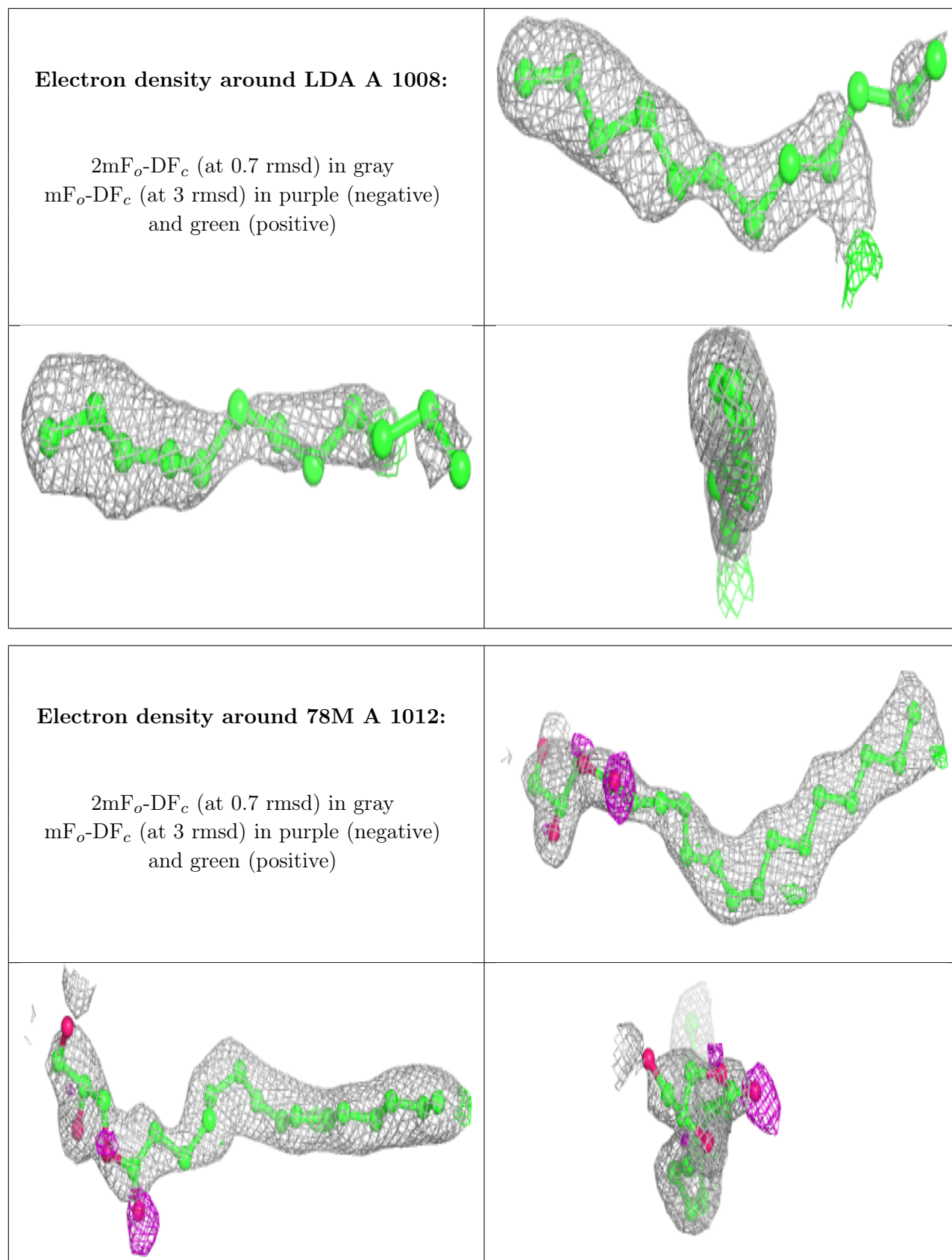
Electron density around 78N A 1019:

$2mF_o-DF_c$ (at 0.7 rmsd) in gray
 mF_o-DF_c (at 3 rmsd) in purple (negative)
and green (positive)

**Electron density around 78N A 1015:**

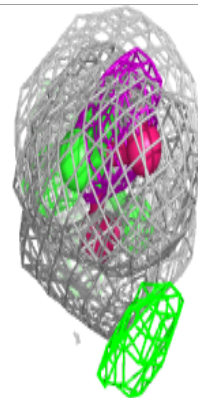
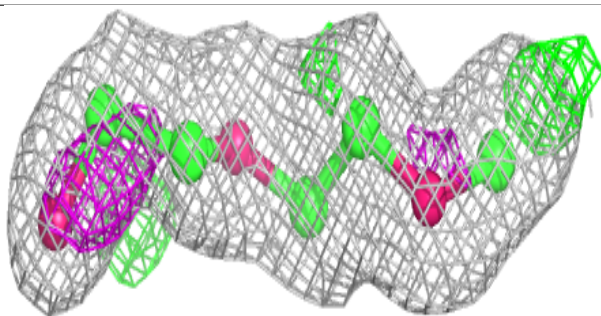
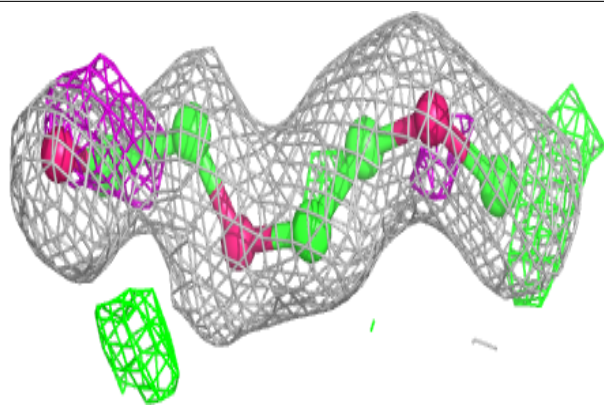
$2mF_o-DF_c$ (at 0.7 rmsd) in gray
 mF_o-DF_c (at 3 rmsd) in purple (negative)
and green (positive)



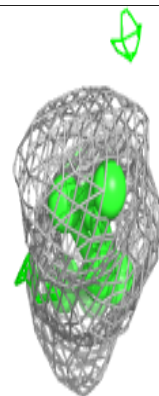
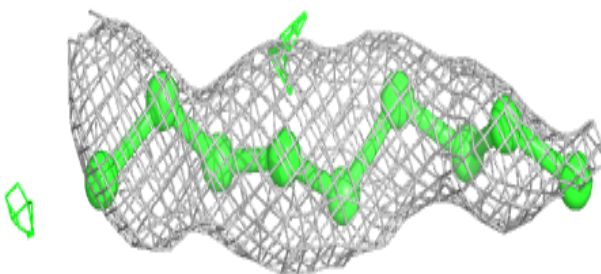
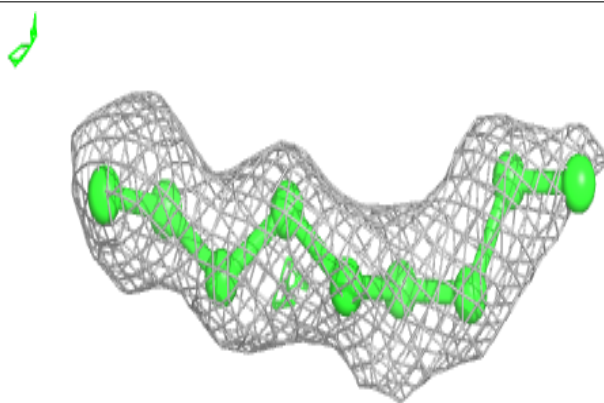


Electron density around PE5 A 1018:

$2mF_o-DF_c$ (at 0.7 rmsd) in gray
 mF_o-DF_c (at 3 rmsd) in purple (negative)
and green (positive)

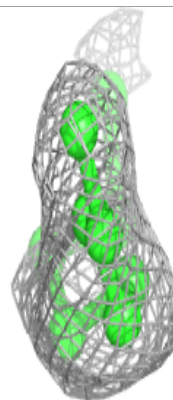
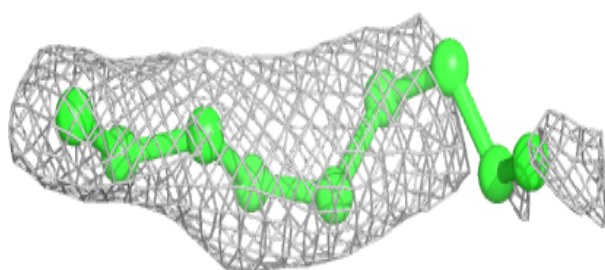
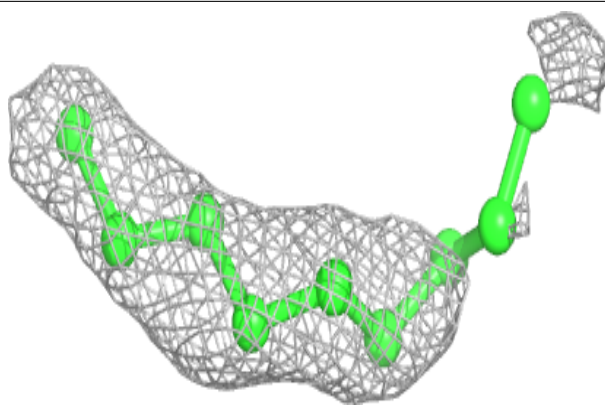
**Electron density around LDA A 1007:**

$2mF_o-DF_c$ (at 0.7 rmsd) in gray
 mF_o-DF_c (at 3 rmsd) in purple (negative)
and green (positive)

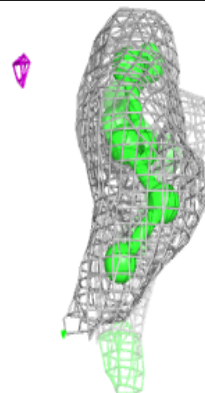
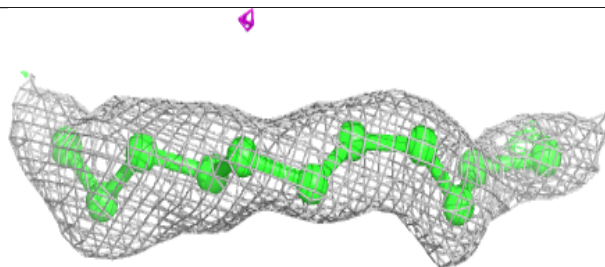
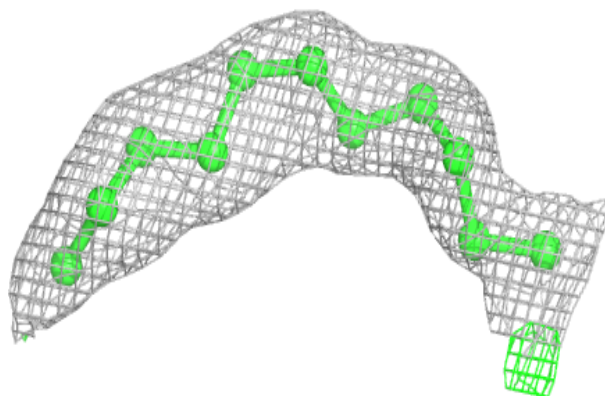


Electron density around LDA A 1010:

$2mF_o-DF_c$ (at 0.7 rmsd) in gray
 mF_o-DF_c (at 3 rmsd) in purple (negative)
and green (positive)

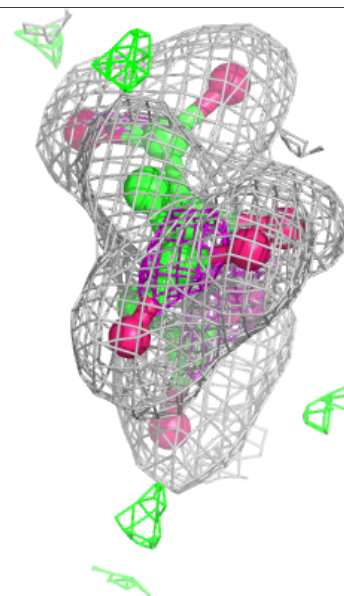
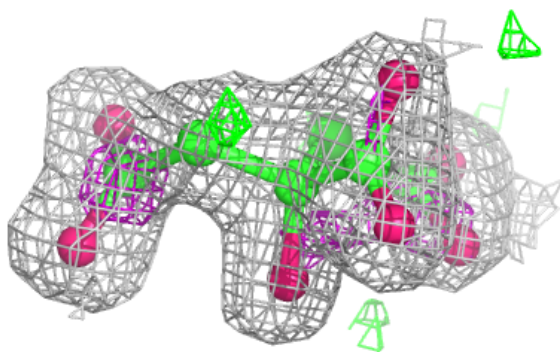
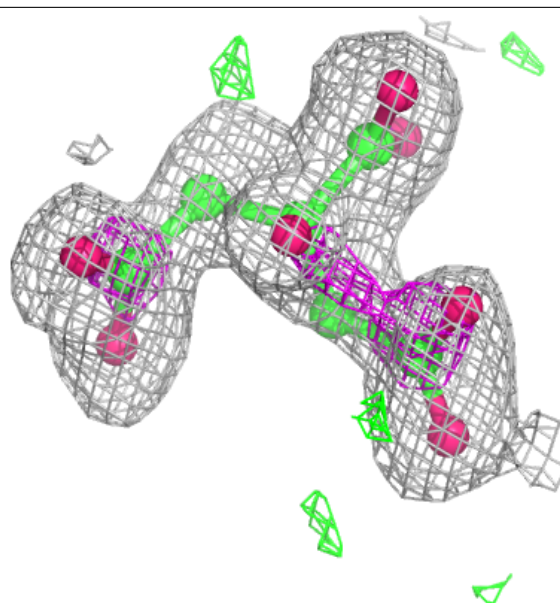
**Electron density around LDA A 1011:**

$2mF_o-DF_c$ (at 0.7 rmsd) in gray
 mF_o-DF_c (at 3 rmsd) in purple (negative)
and green (positive)



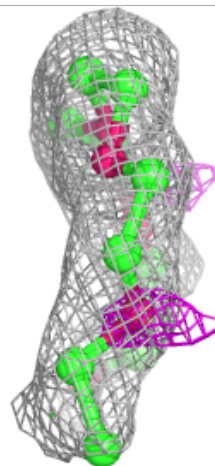
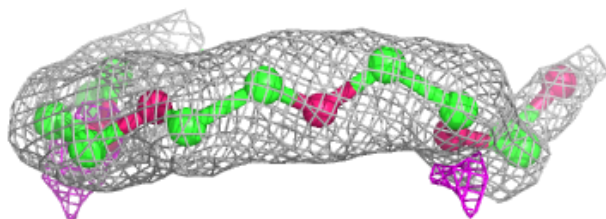
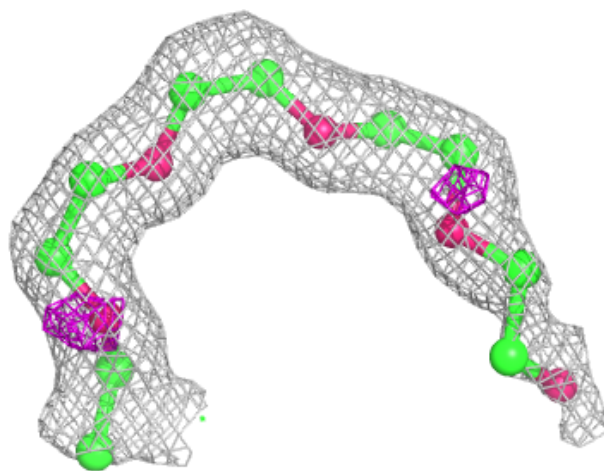
Electron density around FLC A 1003:

$2mF_o-DF_c$ (at 0.7 rmsd) in gray
 mF_o-DF_c (at 3 rmsd) in purple (negative)
and green (positive)



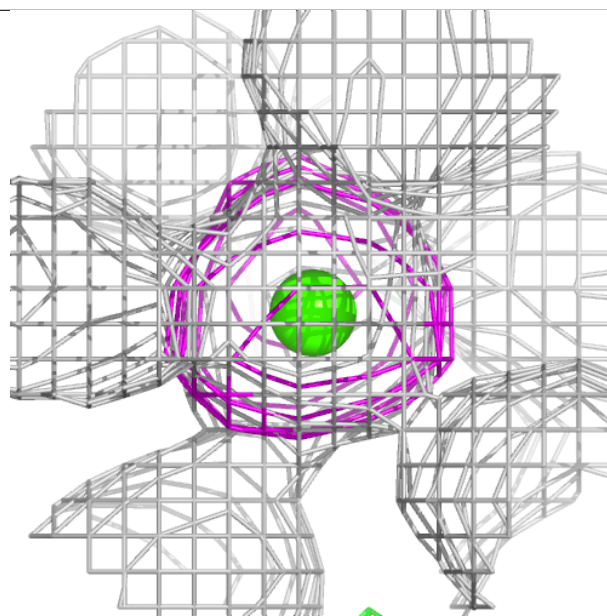
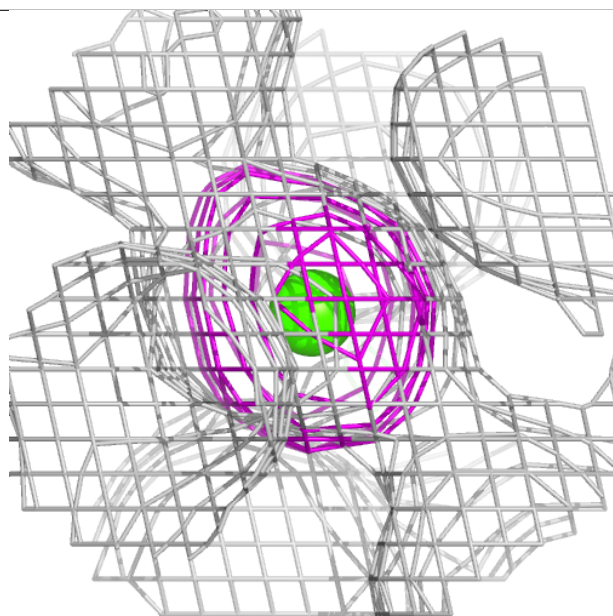
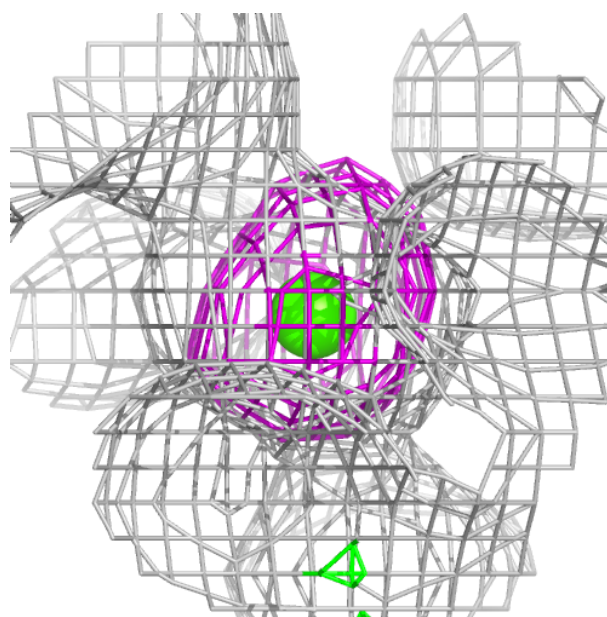
Electron density around PE5 A 1017:

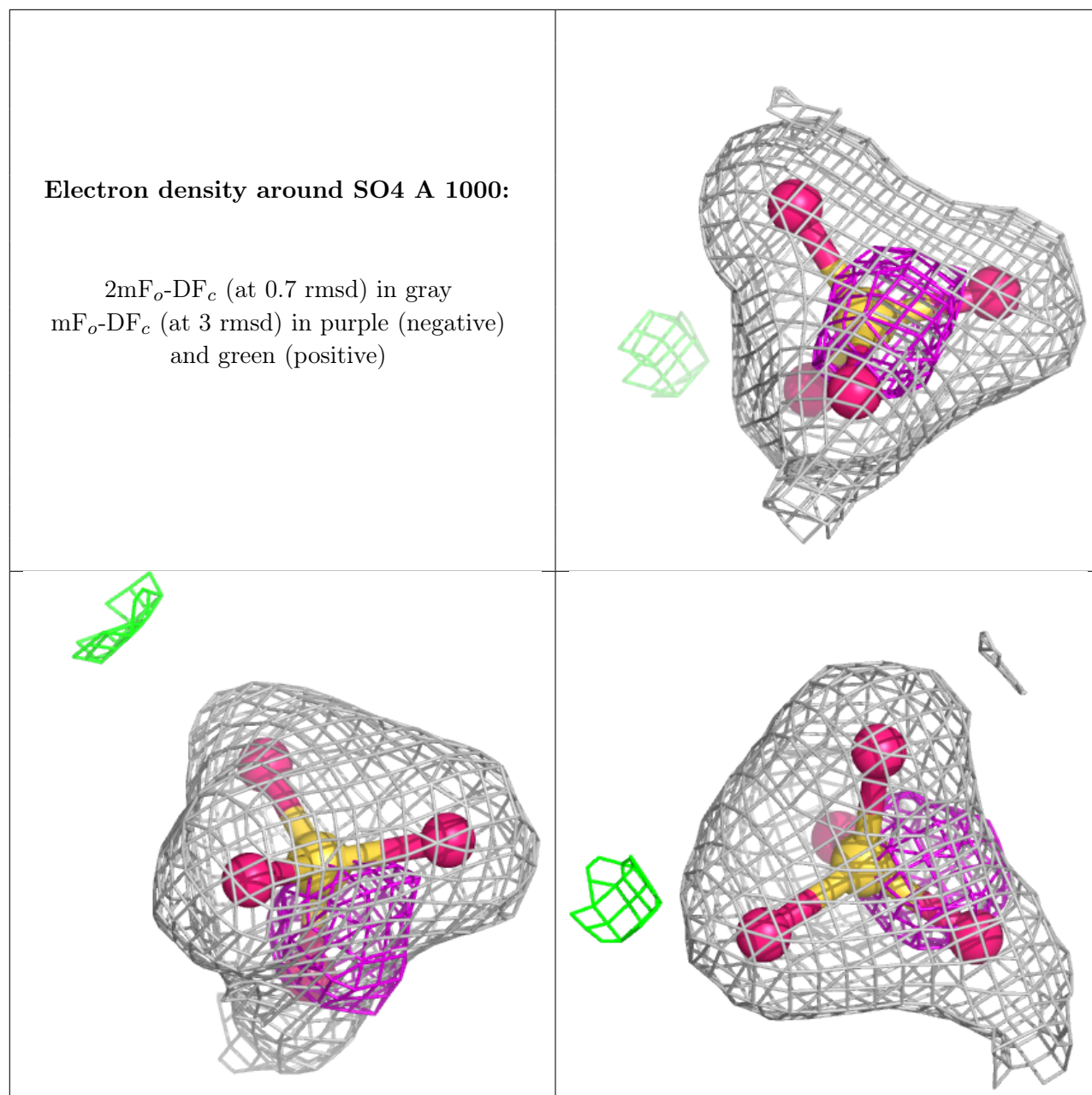
$2mF_o-DF_c$ (at 0.7 rmsd) in gray
 mF_o-DF_c (at 3 rmsd) in purple (negative)
and green (positive)



Electron density around CA A 1001:

$2mF_o-DF_c$ (at 0.7 rmsd) in gray
 mF_o-DF_c (at 3 rmsd) in purple (negative)
and green (positive)





6.5 Other polymers ⓘ

There are no such residues in this entry.